

OFFICE OF RESEARCH AND INFORMATION

Labor Market Spotlight

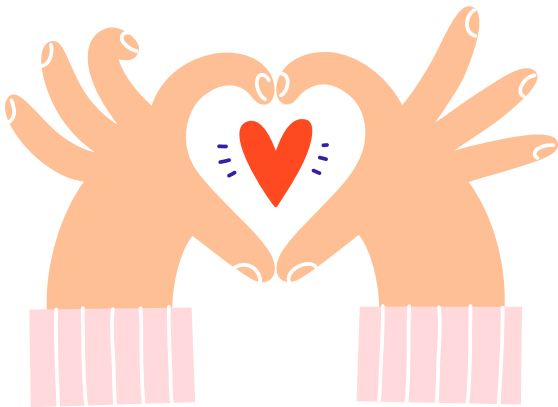
VALENTINE'S DAY EDITION: Fall in Love with New Jersey Businesses

Issue No. 12, Volume 2: February 2024

In the spirit of Valentine's Day, this edition of the Labor Market Spotlight celebrates the allure of New Jersey! Whether you're planning a romantic evening out or a gathering with cherished friends, the state boasts approximately 1,300 hotels for cozy overnight stays and about 17,900 restaurants and bars for festive occasions.

If you are looking for the perfect gift, New Jersey employs roughly 3,800 individuals in jewelry and leather goods stores and 1,700 in florists' shops.

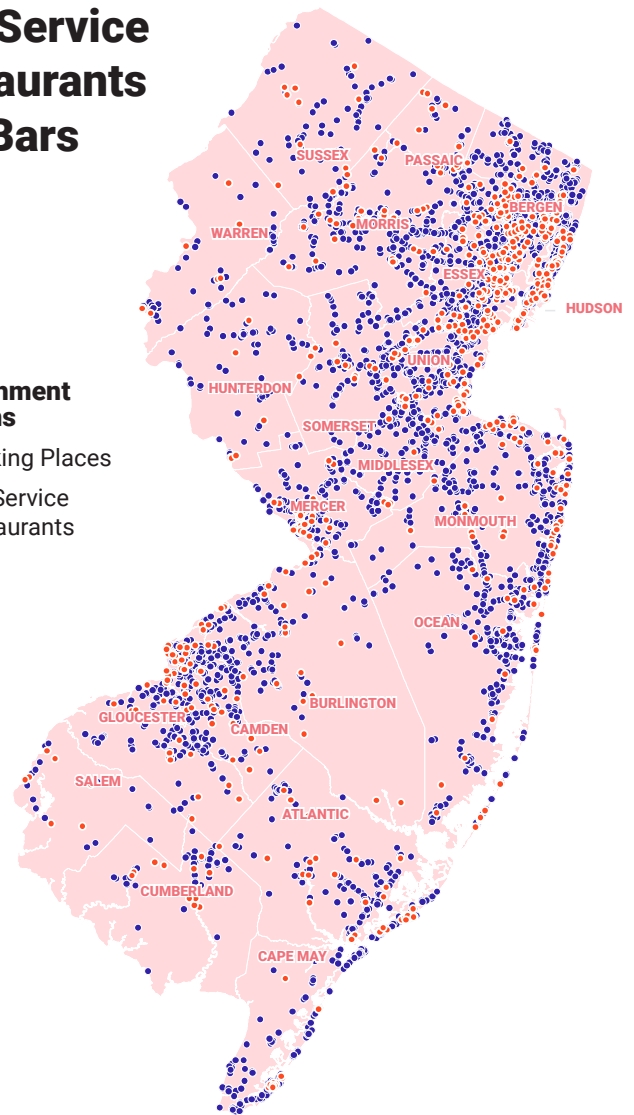
The Garden State prides itself on approximately 230 wineries, breweries, and distilleries, the source of many celebratory drinks. NJ offers beautiful locations for romantic dates including 130 miles of shoreline, mountainous areas, waterfalls, and the Delaware Valley.



Full-Service Restaurants and Bars

Establishment Locations

- Drinking Places
- Full-Service Restaurants



Office of Research
and Information

[NJ.GOV/LABOR/DATA](https://nj.gov/labor/data)



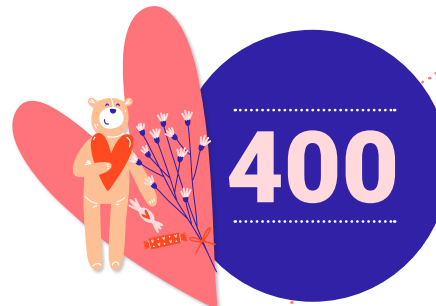
Total wages paid by full-service restaurants and drinking places in 2022



Total wages paid by hotels in 2022



Total wages paid by wineries, distilleries and breweries in 2022



Flower shops available for buying and ordering flowers



Candy making establishments for making sweet treats

Technical Note: The data in this report is from Quarterly Census of Employment and Wages (QCEW) 2022 annual averages (latest available).

The New Jersey Department of Labor and Workforce Development's (NJDOLE) Office of Research and Information is the singular solution for labor market data needs, combining the power of data and marketing materials to deliver evidence-based research. Our team of local and industry specialists provide technical assistance and information that highlights key New Jersey economic status, such as employment, wages, occupation, workplace safety, and labor force.

This workforce product was funded by a grant awarded by the U.S. Department of Labor's Employment and Training Administration. The product was created by the grantee and does not necessarily reflect the official position of the U.S. Department of Labor. The Department of Labor makes no guarantees, warranties, or assurances of any kind, express or implied, with respect to such information, including any information on linked sites and including, but not limited to, accuracy of the information or its completeness, timeliness, usefulness, adequacy, continued availability, or ownership. This product is copyrighted by the institution that created it. Internal use by an organization and/or personal use by an individual for non-commercial purposes is permissible. All other uses require the prior authorization of the copyright owner.