

New Jersey's Retail Trade Industry Sector

Prepared by:
New Jersey Department of Labor & Workforce Development
Office of Research & Information
Bureau of Labor Market Information
Winter 2020-2021



Office of
Research and
Information

New Jersey Retail Trade Highlights

- Food & Beverage Stores employment accounts for 24.5 percent of retail
- Nearly 30,000 establishments paid its 447,280 employees over \$16.2 billion in total wages
- Nearly 3 of 10 jobs located in 3 counties: Bergen, Middlesex & Monmouth
- Workforce younger than the average for all industries but aging since 1999
- The fastest-growing industry from 2010 was non-store retailers (34.4%). The significant gain due to an increase in online shopping and the influx of Amazon fulfillment centers
- Largest gain since 2010 was Motor Vehicle & Parts Dealers (+8,299)
- Provides workers with foundational skills in customer service, punctuality, and responsibility
- Offers substantial employment opportunities with part-time and temporary work plentiful



Office of
Research and
Information

Source: Quarterly Census of Employment and Wages, 2019 Annual Averages;
2019 American Community Survey Public Use Micro-data Sample (5% Sample)
Prepared by: New Jersey Department of Labor and Workforce Development
November 2020

New Jersey has a wide variety of retailers

Motor Vehicle and Parts Dealers

Furniture and Home Furnishings Stores

ELECTRONICS AND APPLIANCE STORES

Building Material & Garden Supply Stores

Food and Beverage Stores

Health and Personal Care Stores

Gasoline Stations

Clothing and Clothing Accessories Stores

Sporting Goods/Hobby/Book/Music Stores

GENERAL MERCHANDISE STORES

MISCELLANEOUS STORE RETAILERS

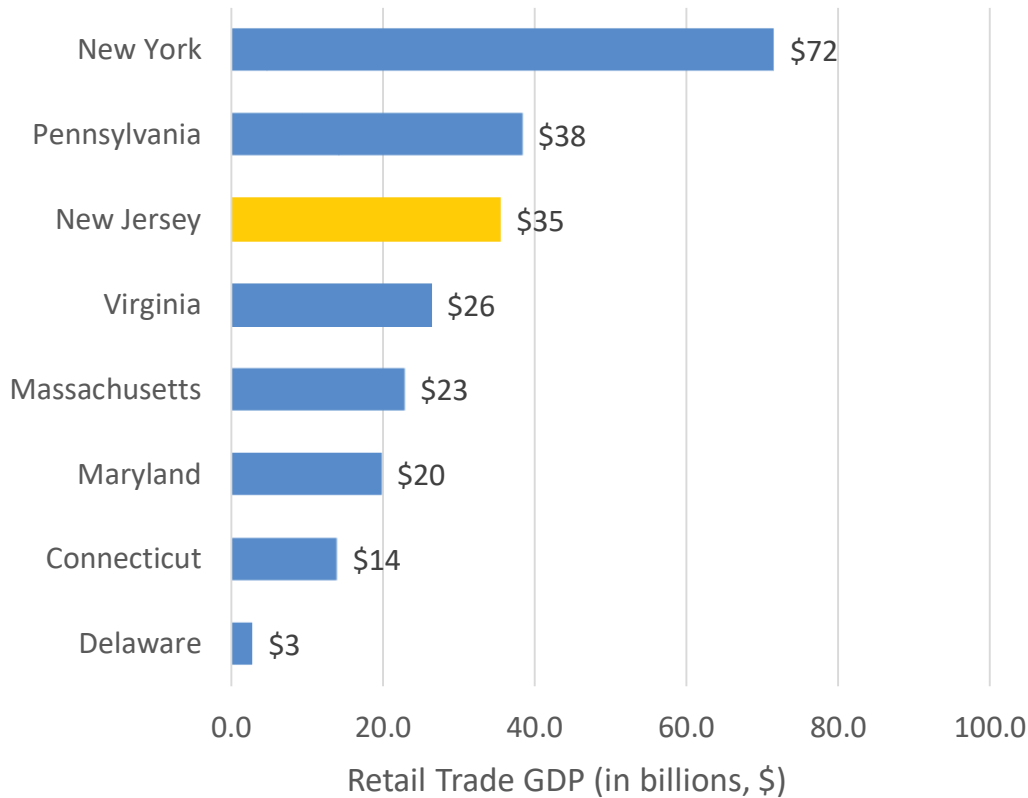
Non-store Retailers



Office of
Research and
Information

GDP from Northeast & Mid-Atlantic states

Gross Domestic Product Generated from Retail Trade
Selected States, 2019



NJ 3rd contributing nearly \$35.5 billion

3.2 percent of US GDP in Retail

Retail in tri-state area (NJ, NY & PA) 12.8 percent of US

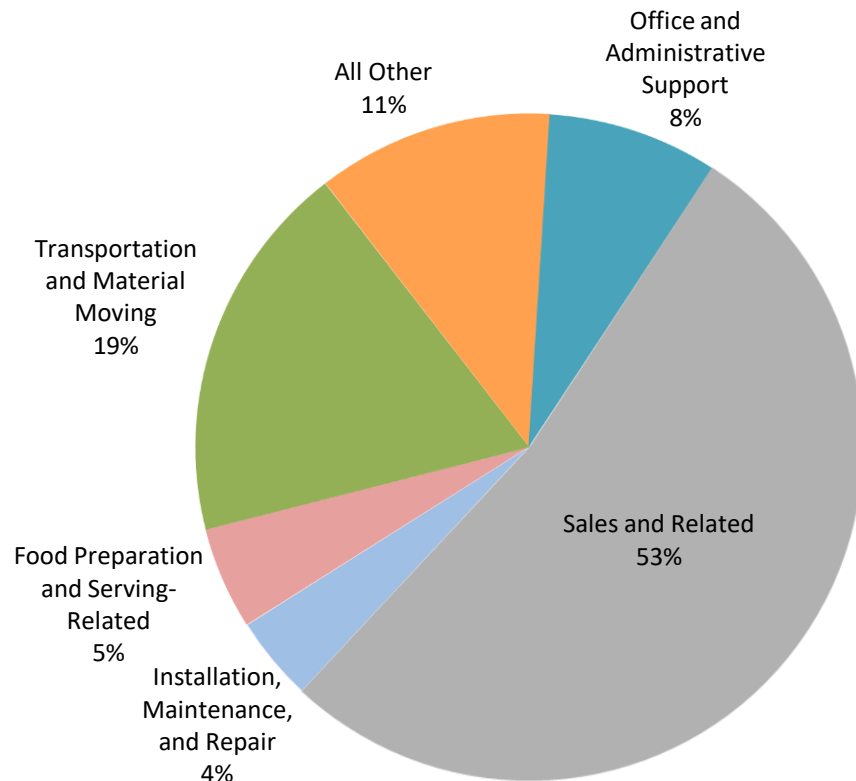


Office of
Research and
Information

Source: United States Bureau of Economic Analysis, GDP in Chained 2012 Dollars
Prepared by: New Jersey Department of Labor and Workforce Development
November 2020

Employment by occupation type

Breakdown of Major Occupational Groups within Retail Trade Industry: New Jersey, 2019



Over half involved with sales (> 238,300)

Nealy 84,000 transportation and material moving occupations

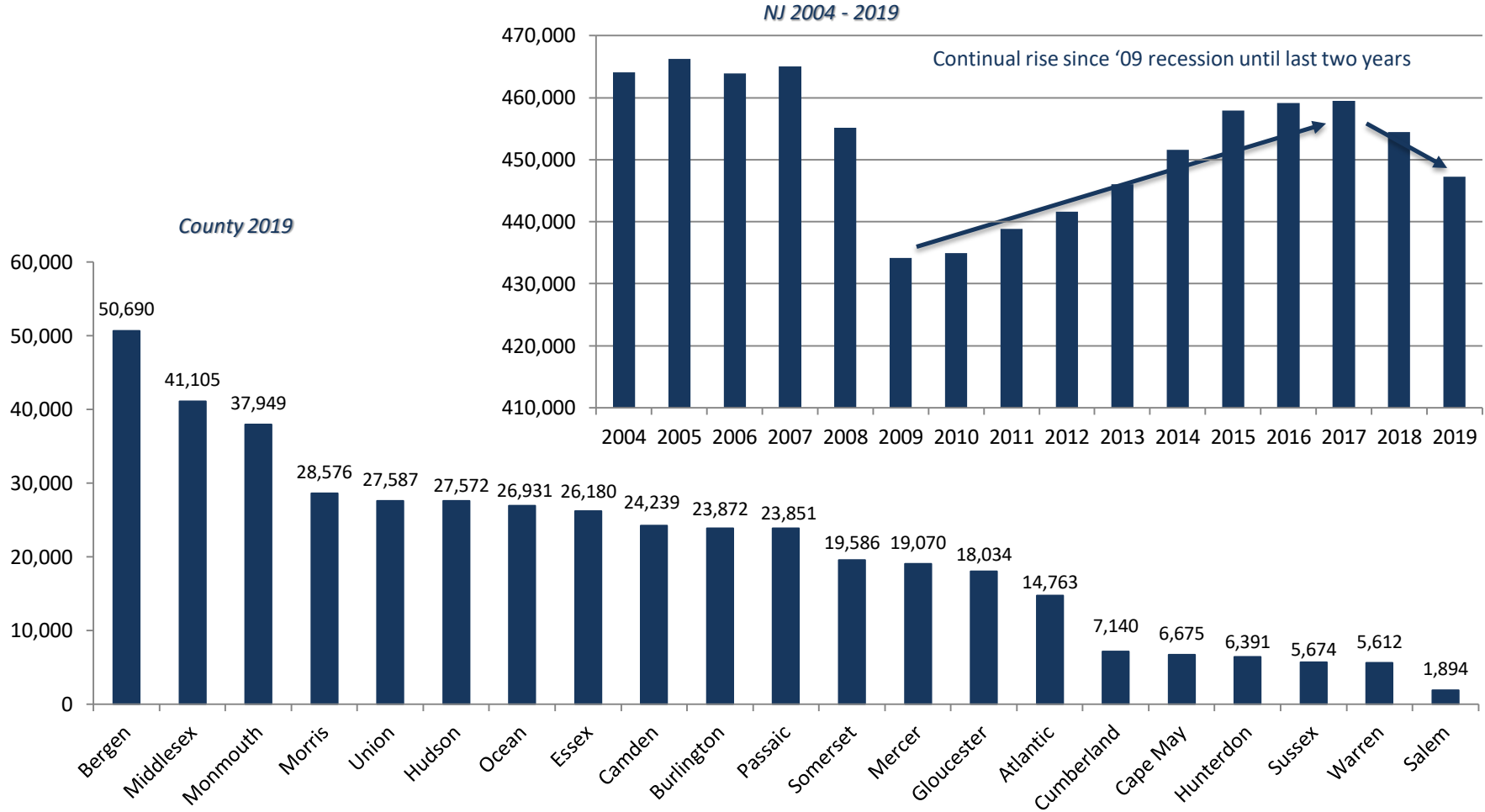
“All Other” 11% includes healthcare, production, management/business and a variety of other occupations



Office of
Research and
Information

Source: NJLWD, Occupational Employment Statistics Survey, May 2019
Prepared by: New Jersey Department of Labor and Workforce
Development, November 2020

Employment rebounded then slipped



Office of
Research and
Information

Source: NJLWD, Quarterly Census of Employment & Wages, Annual Averages
Prepared by: New Jersey Department of Labor and Workforce Development,
November 2020

Workforce has been aging for the last 20 years

Breakdown of Workforce by Age
New Jersey: 1999 - 2019

65+ grew fastest at 100.8%



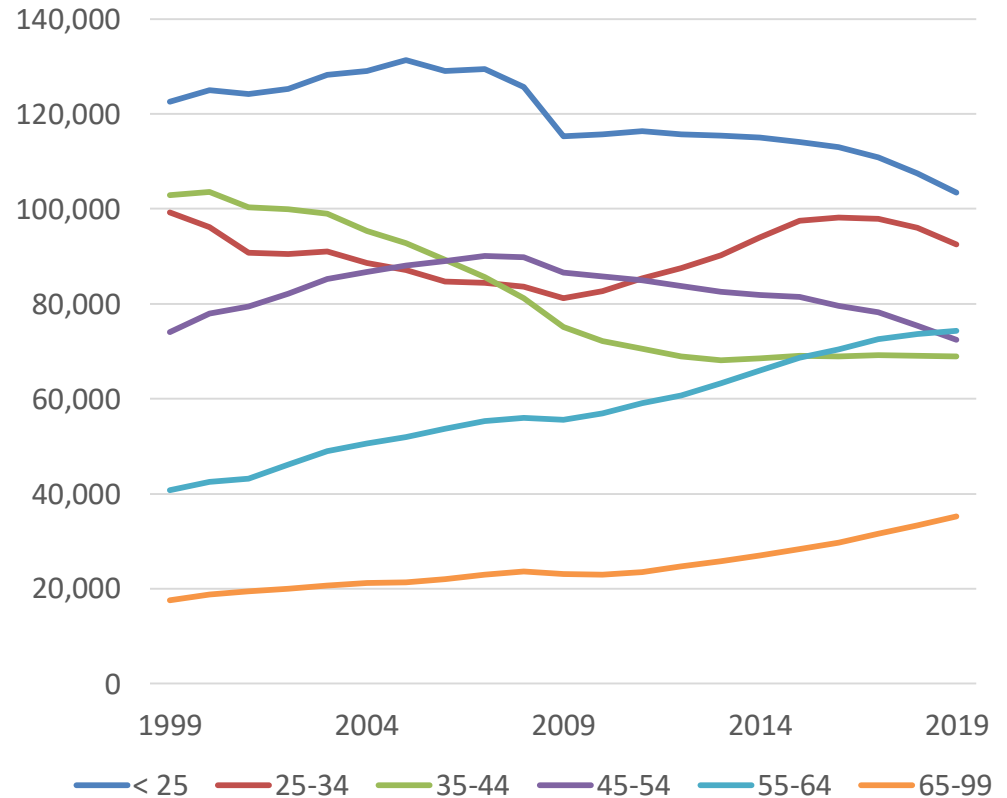
Biggest growth (33,481): 55-64



Biggest decline (-33.0%): 35-44



Only 24.5 percent over 55



Office of
Research and
Information

Source: United States Census Bureau, Quarterly Workforce Indicators
Prepared by: New Jersey Department of Labor and Workforce
Development, November 2020

NEW JERSEY RETAIL INDUSTRY SECTOR CONTACT INFORMATION

Click [here](#) for more detailed analysis of this industry

New Jersey Department of Labor & Workforce Development

<http://lwd.dol.state.nj.us/>

PO Box 057
Trenton, NJ 08625-0057

Office of Research and Information

http://lwd.dol.state.nj.us/labor/lpa/LMI_index.html

Michael J. Dugan – Labor Market Analyst

Tel: (609) 633-6425

Email: michael.dugan@dol.nj.gov



Office of
Research and
Information