

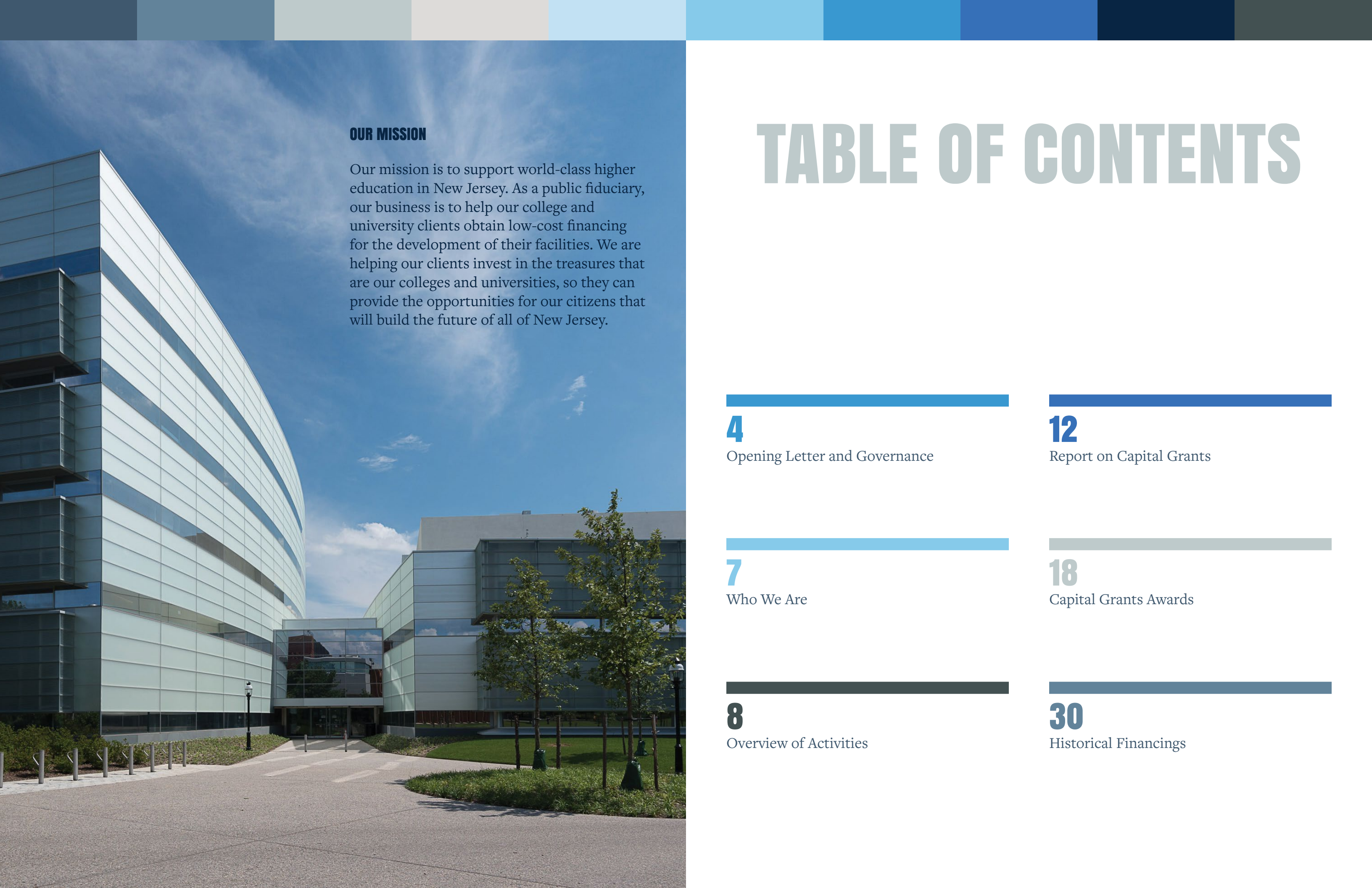


BUILDING FUTURES

FOR NEW JERSEY AND ITS
HIGHER EDUCATION COMMUNITY

NJEFA

ANNUAL REPORT 2023



OUR MISSION

Our mission is to support world-class higher education in New Jersey. As a public fiduciary, our business is to help our college and university clients obtain low-cost financing for the development of their facilities. We are helping our clients invest in the treasures that are our colleges and universities, so they can provide the opportunities for our citizens that will build the future of all of New Jersey.

TABLE OF CONTENTS

4

Opening Letter and Governance

12

Report on Capital Grants

7

Who We Are

18

Capital Grants Awards

8

Overview of Activities

30

Historical Financings

TO THE GOVERNOR AND MEMBERS OF THE NEW JERSEY LEGISLATURE:

On behalf of the Members and staff of the New Jersey Educational Facilities Authority, we are pleased to present NJEFA’s 2023 Annual Report.



SHERYL A. STITT
NJEFA,
Executive Director



JOSHUA E. HODES
NJEFA, Chair

This report highlights the Authority’s business activity throughout the year, including a review of significant operational changes, financing transactions and grant administration on behalf of the State’s colleges and universities.

The year 2023 began with leadership change at the Authority. In April, Sheryl Stitt was appointed by the Members as the Authority’s 10th executive director. With over two decades of service to the Authority, Ms. Stitt’s leadership is guided by her knowledge of New Jersey higher education and dedication to public service. She brings to the position an unparalleled understanding of the Authority’s operations and a deep appreciation for the Authority’s mission in service to the State’s colleges and universities. The Authority Members also appointed Steven Nelson as deputy executive director. His leadership is shaped by many years of experience as a higher education, not-for-profit and generalist banker for issuers across the nation, nearly ten years of which has been at the Authority where he has overseen statewide debt issuance by New Jersey’s colleges and universities.

The year’s business activity was largely defined by the Authority’s administration of the Secretary of Higher Education’s *Summer 2022 Cycle of the Higher Education Capital Facilities Grant Programs*. Since Governor Phil Murphy’s and the Secretary’s announcement in November 2021 of new grant availability under four capital grant programs, the Authority Board and staff have worked in partnership with the Office of the Secretary of Higher Education (OSHE) on implementation of nearly every step in the grant administration process.

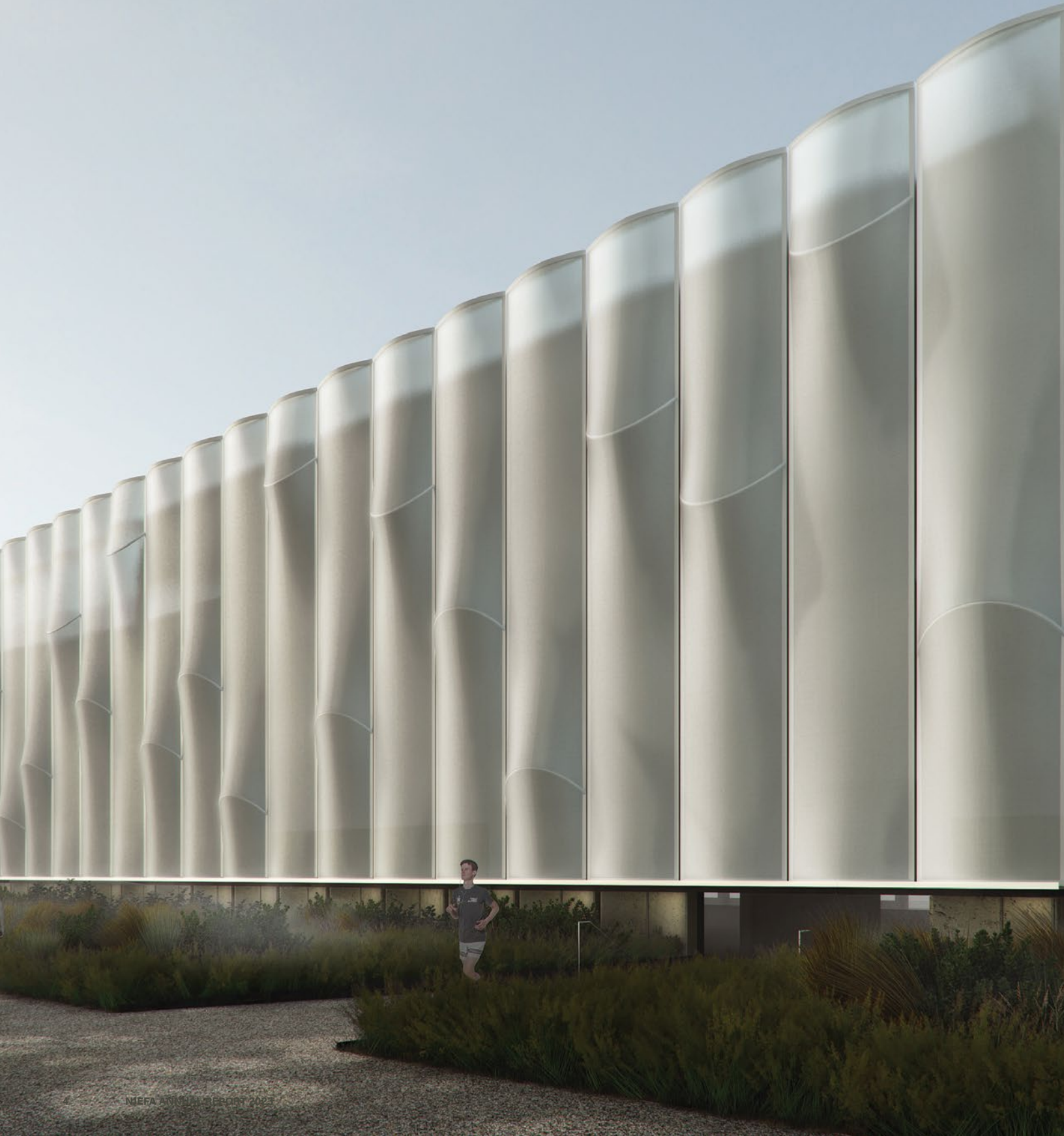
The Authority Board fulfilled a critical role in support of the grant programs through several key actions taken during the course of the year. Among them was authorization of bond financings under the four programs to fund the grants and various Board approvals to ensure program compliance with state and federal tax law. One such approval was adoption of forms of grant and lease agreements for submission to the Legislature’s Joint Budget and Oversight Committee, for requisite review and approval.

Authority staff efforts on the grant programs involved providing input on development of regulations and guidelines; development of the application intake process, solicitation package, and other documentation for grantees; assisting in the grant application review process; and processing requisitions for funds as projects got underway. Staff also worked collaboratively with the New Jersey Department of Treasury’s Office of Public Finance, the Attorney General’s Office and key public finance professionals to structure and sell bond issuances under two of the programs. These issuances included \$184 million in bonds to support the Higher Education Capital Improvement Fund and \$77 million in bonds to support the Higher Education Equipment Leasing Fund.

The collaborative efforts of many agencies culminated in nearly \$400 million in investment by the Murphy administration in New Jersey’s higher education infrastructure. That investment is being used to support the advancement of higher education through 54 grant projects at 31 institutions across the state.

The Authority was also involved in the historic merger between Bloomfield College and Montclair State University, providing much needed technical support as the institutions sought to address the issues of the merger’s impact on outstanding Authority grant and bond agreements between the institutions. The success of the merger between the two institutions is a testament to what cooperation and a shared belief in providing successful outcomes to students can achieve in a time of increasing financial pressures on colleges and universities nationwide.

Our thanks to Governor Murphy and the Members of the Legislature for their support of NJEFA’s efforts throughout the year. Most importantly, we recognize and thank NJEFA’s members and exceptional staff for their work and dedication to supporting world-class higher education throughout New Jersey.



BOARD MEMBER SPOTLIGHT

Oversight and direction of NJEFA is entrusted to a seven-member board composed of five public, unsalaried members appointed to five-year terms by the Governor with confirmation by the New Jersey Senate.

The state treasurer and secretary of higher education serve as ex-officio members and NJEFA’s statute provides for gubernatorial veto authority over all actions of our members. The day-to-day operations of the Authority are managed by a skilled and experienced staff led by an executive director who is also the chief executive officer of the Authority.

EX-OFFICIO MEMBERS



BRIAN K. BRIDGES, PH.D.
*Secretary of Higher Education,
State of New Jersey*

Brian Bridges, Ph.D., currently serves as Secretary of Higher Education for the State of New Jersey where he is responsible for policy development and coordination of higher education activities for the state. He

also coordinates initiatives to accelerate upward mobility for all New Jerseyans, especially those from underrepresented backgrounds, through equitable pathways to postsecondary and career success. Dr. Bridges previously served as Vice President of Research and Member Engagement at the United Negro College Fund (UNCF); Vice Provost for Diversity, Access, and Equity at Ohio University; Associate Director of the Center for Advancement of Racial and Ethnic Equity at the American Council on Education; and Associate Director at the National Survey of Student Engagement (NSSE).



ELIZABETH MAHER MUOIO
Treasurer, State of New Jersey

Elizabeth Maher Muoio assumed the role of state treasurer in an acting capacity on January 16, 2018 when Gov. Murphy took office. She was officially confirmed to the post by the State Senate on April 17, 2018.

From 2015-2018, Ms. Muoio served as a member of the New Jersey General Assembly. While there, she was on the Assembly Budget, Judiciary, and Commerce and Economic Development committees. Her signature legislative initiatives while in the Assembly focused on improving access for women's healthcare, closing the gender pay equity gap, protecting the environment, reducing exposure to hazardous lead, improving prison re-entry services, increasing literacy rates, fighting against concentrated poverty and expanding economic opportunities for all New Jerseyans.

Ms. Muoio also served as director of the Mercer County Office of Economic Development and Sustainability from 2008 to 2018. Prior to assuming that position, she served as a member of the Mercer County Board of Chosen Freeholders from 2000–2008, serving as chair in 2004 and vice chair in 2003 and 2008. While chair, she worked with the county executive to enact one of the first countywide anti-pay-to-play ordinances in the nation.

PUBLIC MEMBERS



JOSHUA E. HODES
NJEFA Chair

Joshua Hodes has served as a member of the Authority’s board since 2010 and has served as board chair since 2016. Mr. Hodes is a partner at Public Strategies Impact, a government relations, public affairs, and association management firm located in Trenton, NJ, where he is responsible for a broad range of issues, including education, energy, healthcare, and redevelopment work. Previously, Mr. Hodes served as chief of staff to the Assembly majority leader and as senior staff member of the Assembly Majority Office, advising the Assembly Democratic Caucus on public policy initiatives. Prior to joining the Assembly Majority Office, Mr. Hodes served as an associate in government relations at Public Strategies Impact.

Mr. Hodes is active in local, state and national politics and has served on the New Jersey Democratic State Committee’s Committee on Vacancies, which is responsible for selecting the New Jersey Electoral College members. In 2016, Mr. Hodes served as a member of the Rules Committee for the Democratic National Committee.

Josh received his bachelor’s degree from Rutgers College and a Master’s in Labor and Employment Relations from Rutgers University.



RIDGELEY HUTCHINSON
NJEFA Vice Chair

Ridgeley Hutchinson has served on the board since 2008. He retired as executive director of the Northeast Carpenters Apprentice Training and Educational Fund in 2018 after 40 years of service. Since his retirement, Ridgeley was named president

of Truehart Productions, a 501(c)(3) nonprofit corporation established in May 2019, for the exclusive purpose of producing documentary films that tell the untold story of enslaved people in New Jersey. Truehart’s goal is to raise awareness about slavery at this critical time when so many are struggling to understand the acute disparities of racial inequality and the social inequities of the Black experience today. Both documentaries were nominated for a New York Emmy and are now available to school children and the general public to shine a light on the dark history of the African American experience. The history of slavery is inadequately taught in our school systems, and education about slavery is an essential step toward understanding the racism and disparities that still exist in our society today. Last year the films were distributed nationally and viewed in over 40,000 households.



LOUIS RODRIGUEZ

Appointed to the Authority Board in November 2013, Louis Rodriguez is an electrical engineer with a Professional Engineer (PE) license and provided consulting services to electrical utilities throughout the world. He is also a qualified financial advisor and has worked in that capacity for Morgan Stanley, Merrill Lynch and Met Life. He also served proudly in the

United States Army.

An active civic and community leader, Mr. Rodriguez is a trustee in various nonprofit organizations including the Axelrod Performing Arts Center, the Monmouth Medical Center, the Parker Family Health Center, the Boy Scouts of America of Monmouth County, Monmouth Museum, and a member of the Wilbur Ray Scholarship Committee at Brookdale Community College. He has received numerous awards for his outstanding community service. He was selected as the Grand Marshal for the Marlboro Township 2020 Memorial Day Observance. He is also the former executive director of the Latino Chamber of Commerce of Monmouth County.

In 2019, Mr. Rodriguez added author to his list of accomplishments by publishing his first book, “Born to Travel the World.”

WHO WE ARE

NJEFA takes a client centered approach.

The Authority’s team of professionals is committed to providing excellent service to its clients from concept through the life of the financing, providing service before the transaction enters the capital markets, during the financing process, and after a transaction closes through maturity of the bonds.



Standing (L to R)			Seated (L to R)		Not Pictured
Linda J. Hazley <i>Office Manager/ Document Specialist</i>	Ed DiFiglia <i>Public Information Officer</i>	Kristen Middleton <i>Assistant Controller</i>	Brian Sootkoos <i>Director of Finance/ Controller</i>	Sheryl A. Stitt <i>Executive Director</i>	Lynne Accisano <i>Confidential Executive Assistant</i>
Rebecca Crespo <i>Associate Project Manager</i>	Carl MacDonald <i>Project Manager</i>	Jamie O'Donnell <i>Senior Grant Compliance Manager</i>	Steven P. Nelson <i>Deputy Executive Director</i>	Ellen Yang, Esq. <i>Director of Compliance Management</i>	
Sheila Toles <i>Senior Human Resources Manager</i>	Gary D. Vencius <i>Accounting Manager</i>				

Overview of Activities

The higher education sector is constantly changing as workforce needs evolve, technology used in research and learning advances, and expectations of what students will take from their college experiences shift.

As the Authority’s client institutions adapt to this ever-changing landscape, the Authority keeps pace to meet their needs and to find new efficiencies in its own business operations. In 2023, much of the Authority’s work was focused on the Higher Education Capital Facilities Grant Programs. Beyond the grant programs, the Authority also achieved many notable accomplishments over the course of the year, including:

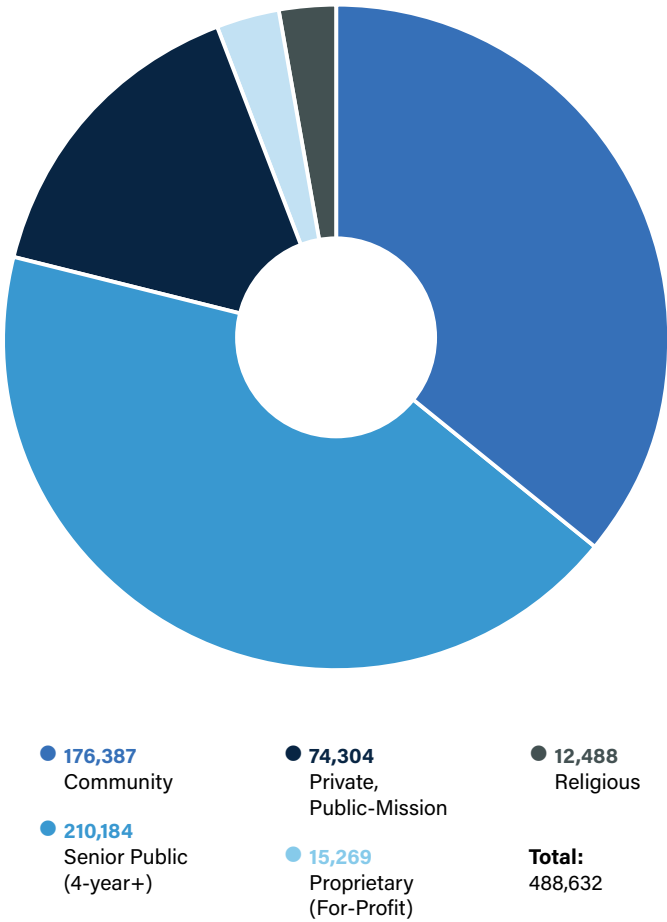
- The Authority worked with five different institutions of higher education to assist them with different financing and post-issuance needs. This included re-authorization of Princeton University’s commercial paper notes program to allow for up to \$120 million in issuances; post-issuance amendments to bond covenants for Fairleigh Dickinson University’s 2021 Series A Bond and Seton Hall University’s 2021 Series D Bond; and assistance on grant and bond related areas of the historic merger between Bloomfield College and Montclair State University.
- The Authority began a comprehensive document management project to reduce its paper footprint and convert archived files to digital storage. This undertaking also includes state certification of copy machines to facilitate digital file conversion. By reducing the amount of physical paper used, the Authority is simultaneously cutting costs and reducing its carbon footprint.

- The Authority implemented and deployed its new bond software system that replaced its aging bond fund general ledger and related accounting systems. As of December 31, 2023, the Authority currently has \$4.96 billion in college and university bonds outstanding and \$354 million in assets currently under management either directly by the Authority or through third-party asset managers.
- The Authority created a new structure for the procurement of asset managers resulting in the addition of two firms to the pool of advisors that client institutions can select from to manage investment of their unspent bond proceeds. This represents an expansion of flexibility and choice for client institutions interested in professional asset management services for their unspent bond proceeds. With this change, client institutions can select a single financial advisor, a financial advisor with a sub-advisor, or multiple advisors.
- The Authority hosted a webinar on post-issuance compliance matters for client institutions. The main topics of the webinar were arbitrage rebate and continuing disclosure. Director of Finance/Controller Brian Sootkoos and Director of Compliance Management Ellen Yang provided information to attendees on behalf of the Authority, while Robin Schlimgen, Managing Director at the BLX Group, presented as a subject matter expert.

“AS THE AUTHORITY’S CLIENT INSTITUTIONS ADAPT TO THIS EVER CHANGING LANDSCAPE, THE AUTHORITY KEEPS PACE TO MEET THEIR NEEDS AND TO FIND NEW EFFICIENCIES IN ITS OWN BUSINESS OPERATIONS.”



12 MONTH ENROLLMENT HEADCOUNT TREND BY INSTITUTIONAL SECTOR AT NEW JERSEY COLLEGES AND UNIVERSITIES 2022-2023



Source: New Jersey Office of the Secretary of Higher Education.

NJEFA SERVICES

Financial Services

- Tax-exempt and taxable bond issuance
- Access to negotiated, competitive, and direct purchase markets
- P3 and Affiliate Financings
- Working Capital
- Grant administration

Post-Closing and Other Services

- Bond fund administration
- Management and investment of bond proceeds
- Administration of requisition process for release of bond proceeds
- Assistance with tax and securities law compliance
- Monitoring for refunding opportunities
- Arbitrage compliance and swap monitoring
- Power to contract to construct, acquire, reconstruct, improve or rehabilitate any New Jersey higher education project (N.J.S.A. 18A:72A-5)

NJEFA Client and Partner Institutions

Lowering financing costs for New Jersey’s public and private colleges and universities.

State Colleges and Universities

New Jersey City University	The William Paterson University of New Jersey
Ramapo College of New Jersey	
Stockton University	Thomas Edison State University
The College of New Jersey	

Independent Four-Year Colleges and Universities

Caldwell University	Pillar College
Centenary University	Princeton University
Drew University	Rider University
Fairleigh Dickinson University	Saint Elizabeth University
Felician University	Saint Peter’s University
Georgian Court University	Seton Hall University
Monmouth University	Stevens Institute of Technology

Public Research Universities

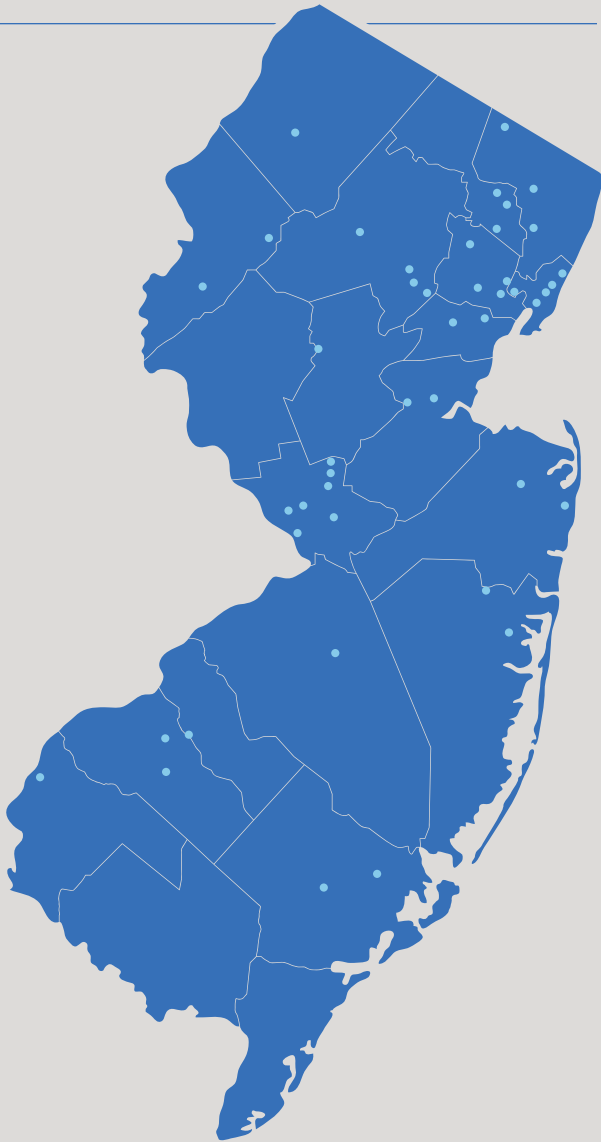
Kean University	New Jersey Institute of Technology	Rutgers, The State University of New Jersey
Montclair State University	Rowan University	

County Colleges

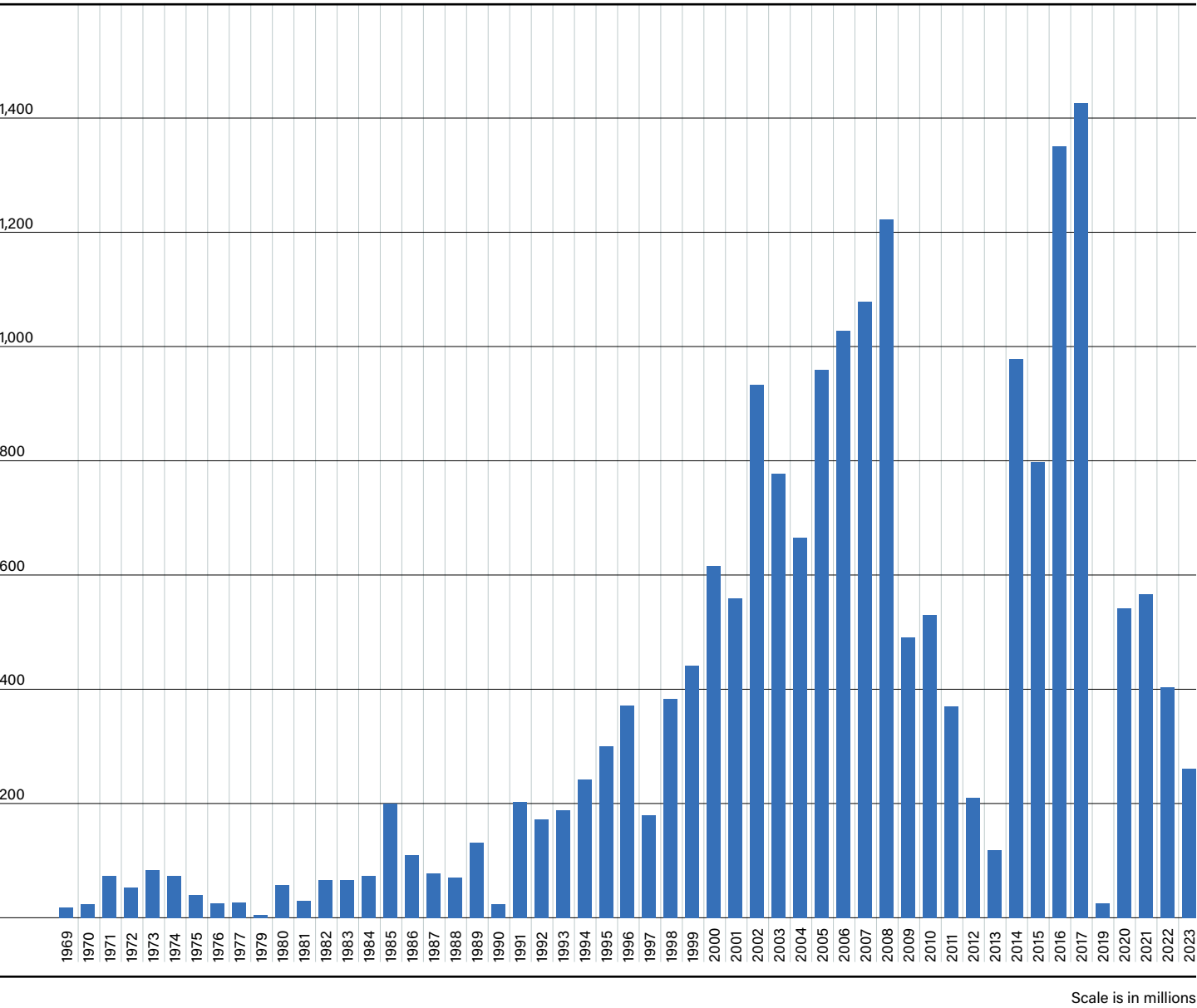
Atlantic Cape Community College	Hudson County Community College	Rowan College at Burlington County
Bergen Community College	Mercer County Community College	Rowan College of South Jersey
Brookdale Community College	Middlesex College	Salem Community College
Camden County College	Ocean County College	Sussex County Community College
County College of Morris	Passaic County Community College	Union College of Union County
Essex County College	Raritan Valley Community College	Warren County Community College

Other

Institute for Advanced Study	Institute for Defense Analyses
------------------------------	--------------------------------



NJEFA Par Amount Issued By Year 1969-2023



Scale is in millions

NJEFA PERMISSIBLE PROJECTS

- Academic facilities and libraries
- Laboratory and research facilities
- Technology infrastructure
- Energy and utility projects
- Equipment
- Student housing facilities
- Student life and athletic facilities
- Parking structures
- Road and site improvements
- Land acquisition
- Working Capital

Report on Capital Grants

A NOTE FROM SECRETARY BRIDGES

Our institutions of higher education are critical economic engines. They play an essential role in driving New Jersey’s economy forward by educating and preparing residents for the skilled jobs of both today and tomorrow. However, to fully leverage New Jersey’s top resource — our talent — and maintain New Jersey’s well-earned reputation as the State of Innovation, continued investment into the infrastructure necessary to support 21st century learners remains vital.

To that end, the Office of the Secretary of Higher Education, in partnership with the Educational Facilities Authority, was proud to award nearly \$400 million in grant funding for 54 capital improvement projects across several of our state’s colleges and universities in 2023. We recognized that much of the success of our higher education institutions is founded on the ability to provide students with the learning environments, tools, and technologies that mirror those of the settings they will enter after graduation. In addition to funding many critical infrastructure projects to repair and maintain brick-and-mortar campus facilities, the funding also works to build for the future by modernizing physical offerings and enhancing digital connectivity.

This substantial investment not only underscores the Murphy Administration’s unwavering commitment to ensure students’ access to high-quality postsecondary education right at home in New Jersey, but also emphasizes our desire to see our state’s institutions

thrive and remain competitive. To recruit, retain, and graduate top talent and ensure New Jersey’s diverse higher education ecosystem stays at the forefront of innovation and excellence, students need state-of-the-art classrooms, labs, research facilities, common spaces, and more.

We thank all of the state partners who collaborated with us to make this strategic investment possible, most notably the EFA. The awarded projects reflect our institutions’ commitment to delivering high-quality postsecondary education for New Jersey students. As projects come to fruition on campuses across the state, we look forward to celebrating the ways higher education in New Jersey continues to open the doors to opportunity for all students.

— *Brian K. Bridges, Ph.D.*
Secretary of Higher Education, State of New Jersey

THIS SUBSTANTIAL INVESTMENT NOT ONLY UNDERSCORES THE MURPHY ADMINISTRATION’S UNWAVERING COMMITMENT TO ENSURE STUDENTS’ ACCESS TO HIGH-QUALITY POSTSECONDARY EDUCATION RIGHT AT HOME IN NEW JERSEY, BUT ALSO EMPHASIZES OUR DESIRE TO SEE OUR STATE’S INSTITUTIONS THRIVE AND REMAIN COMPETITIVE.



HISTORY OF THE GRANTS PROGRAMS

The Higher Education Capital Facilities Grant Programs (the “Grant Programs”), include four separate state-supported grant programs: the Higher Education Capital Improvement Fund (CIF), the Higher Education Facilities Trust Fund (HEFT), the Higher Education Technology Infrastructure Fund (HETI) and the Higher Education Equipment Leasing Fund (ELF). These Grant Programs have been a major part of the Authority’s work since bonds were first issued in 1994. In the last 30 years, the Authority has issued 26 different series of bonds across all four grant programs. Combined, these issuances have totaled over \$2.8 billion bonds issued by the Authority to expand, improve, and modernize higher education infrastructure in the Garden State.

Each of the four programs was separately established by the Legislature as a revolving, state-backed bond program. All of the programs provide that debt service will be paid by the State Treasurer pursuant to a contract between the Authority and the Treasurer, subject to annual appropriation by the Legislature. As the State pays down the debt, new bonds can be issued to fund new grants up to the statutory cap imposed through each respective program’s statute. Each grant program has specific statutory and regulatory requirements establishing grant-eligible institutions and projects.

In November 2021, Governor Murphy and the Secretary of Higher Education announced that \$400 million in new grant funds would be made available under the Grant Programs to the state’s colleges and universities. This investment represents the state’s largest industry-wide investment in



November 16, 2021

- Governor Murphy and Secretary Bridges announced the release of \$400 million to the four higher education capital facilities grant programs.



May 2, 2022

- Notices of Grant Availability for CIF, HEFT, HETI, and ELF posted in the NJ Register.



June 13, 2022

- Solicitation for grants distributed.



June 28, 2022

- EFA and OSHE entered into memorandum of understanding for EFA to support the grants programs.



July 1 - July 18, 2022

- Question and Answer Period for applicants to submit questions regarding the application process



July 13, 2022

- EFA and OSHE hosted a technical assistance webinar on the Higher Education Joint Solicitation.

ON OCTOBER 5, 2023, THE AUTHORITY ISSUED \$184 MILLION OF HIGHER EDUCATION CAPITAL IMPROVEMENT FUND, SERIES 2023 A BONDS AND \$77 MILLION OF HIGHER EDUCATION EQUIPMENT LEASING FUND, SERIES 2023 A BONDS.



college and university capital facilities since the 2013 grant cycle that provided \$1.27 billion in capital grants. By statute, the Authority issues the bonds to fund these grant programs. It also serves on the Secretary of Higher Education’s application review committee, manages the investment of bond proceeds, and administers the requisition approval and fund disbursement process. Pursuant to an Memorandum of Understanding with the Secretary of Higher Education, the Authority took on an expanded role as one of the lead agencies in implementing and managing the Summer 2022 Cycle of the Grant Programs.

THE PROCESS

In order to facilitate the implementation of the Summer 2022 Cycle of the Higher Education Capital Facilities Grant Programs, the Authority entered into an MOU with OSHE on June 28, 2022. While both the Authority and OSHE have statutorily designated roles and responsibilities for the grant programs, the MOU provided a framework for both agencies to assist each other with the overall implementation of the Grant Programs.

In consultation with OSHE, Authority staff developed an online application process and solicitation guidelines incorporating all four grant programs. For each of the four grant programs, the solicitation described eligible institutions, and eligible projects and project costs, as

well as descriptions of regulatory requirements including Project Selection Criteria and State Funding Criteria. The entire solicitation was designed in an electronic format accessible through online application software that allowed applicants to easily identify and upload required documentation. This format also enabled the Secretary’s Review Committee to easily access completed applications and supplemental application materials submitted by the institutions. By removing the reliance on paper applications and streamlining the process for submission and review, Authority staff realized significant cost savings to the participating institutions and significant time savings for the Secretary’s Review Committee.

On May 2, 2022, OSHE posted Notices of Grant Availability for all four programs in the New Jersey Register, notifying the public that the grant application process would be underway with the June 13, 2022 release of the solicitation. The Notices stipulated that applications could be submitted until September 7, 2022. A subsequent update to the Notices of Grant Availability extended the application deadline to October 28, 2022.

In an effort to provide potential applicants with as much guidance as possible within a competitive solicitation process, two procedural steps were implemented. First, a question and answer period was established from July 1 – July 18, 2022. During this period, applicants could submit any questions regarding the solicitation and application



August 5, 2022

- Responses to 84 questions were posted to OSHE’s website.



August 8, 2022 – October 28, 2022

- Application submission window.



October 3, 2022

- Application due date moved from September 7, 2022 to October 28, 2022.



November 1 – November 29, 2022

- EFA staff reviewed applications for completeness and irregularities.



November 7, 2022 – January 12, 2023

- EFA, the Office of the Attorney General, and bond counsel completed due diligence reviews of the applications.



January 30, 2023

- Grant Review Committee began review and scoring process.

process. The Authority, OSHE, and Bond Counsel responded to 84 questions about the application process and posted responses on OSHE’s website on August 5, 2022.

Second, a Technical Assistance webinar was created and hosted on July 13, 2022. Approximately 80 applicants listened to a pre-recorded webinar covering details of the Higher Education Joint Solicitation that was presented by OSHE. The webinar covered important dates, institution and project eligibility, and Project Selection Criteria and State Funding Criteria for each program. The webinar also instructed applicants on how to use the application portal, demonstrating how to access the online application portal, and how to provide answers to application questions directly in the portal in addition to how to upload documents.

In total, 115 of complete and eligible applications were received and provided to the Secretary’s Review Committee for consideration. In the aggregate, these applications represented over \$1.1 billion in grant fund requests, nearly three times the amount of available funds.

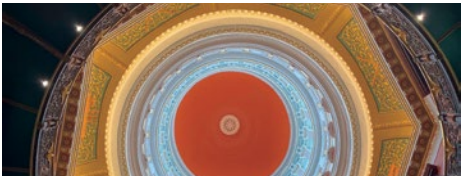
The Secretary’s Review Committee evaluated and scored applications according to pre-determined scoring rubrics established by OSHE and which encapsulated Project Selection Criteria and State Funding Criteria from the regulations and solicitation.

Following the Review Committee’s work, and the Secretary’s review and consideration of the Committee’s recommendations, the Secretary forwarded his selection of CIF and HEFT projects and related grant awards to the New Jersey State Legislature on April 27, 2023. The Secretary forwarded his selection of ELF and HETI projects to NJEFA on April 27 and May 5, 2023. NJEFA forwarded the Secretary’s ELF and HETI recommendations to the New Jersey Legislature Joint Budget Oversight Committee on May 25, 2023.

On July 10, 2023, the Secretary officially notified successful grantees of their grant award. In total 54 projects were funded representing 64 individual awards.

In collaboration with the New Jersey Department of Treasury’s Office of Public Finance, on October 5, 2023, the Authority issued \$184 million of Higher Education Capital Improvement Fund, Series 2023 A Bonds and \$77 million of Higher Education Equipment Leasing Fund, Series 2023 A Bonds. This was followed on January 25, 2024 with the issuance of the Higher Education Facilities Trust Fund, Series 2024 Bonds for \$78,200,000 and the Higher Education Technology Infrastructure Fund, Series 2024 Bonds for \$28,825,000. Authority staff coordinated the execution of agreements and closing documents for all four series of bonds.

ON JANUARY 25, 2024 THE AUTHORITY ISSUED \$78,200,000 IN HIGHER EDUCATION FACILITIES TRUST FUND, SERIES 2024 BONDS AND \$28,825,000 IN HIGHER EDUCATION TECHNOLOGY INFRASTRUCTURE FUND, SERIES 2024 BONDS.



March 21, 2023

- Grant Review Committee submitted recommendations to the Secretary of Higher Education.



May 25, 2023

- EFA forwarded Secretary’s Final list of recommended HETI and ELF projects to JBOC.



July 10, 2023

- Secretary of Higher Education officially notified grantees of their awards



July 11, 2023

- Due Diligence Request and Tax Questionnaire distributed to grantees for response to bond counsel.



October 5, 2023

- Closing Date for CIF and ELF transactions.



January 25, 2024

- Closing Date for HEFT and HETI transactions.

CAPITAL GRANT AWARDS

HIGHER EDUCATION CAPITAL FACILITIES GRANT PROGRAMS JOINT SOLICITATION – SUMMER 2022 CYCLE

The New Jersey Educational Facilities Authority continued its history of serving New Jersey’s higher education community through the issuance of bonds, supporting four distinct state-backed grant programs, and improving internal operations. The following project descriptions are those announced by OSHE as having received grant(s) on July 10, 2023 and do not reflect any subsequent project amendments. Descriptions have been edited for clarity and grammar.

\$59,952,245

Total Awarded Funding

MONTCLAIR STATE UNIVERSITY

Interdisciplinary Sciences Expansion

This capital improvement project aims to increase STEM teaching and research capacity to support the preparation of a diverse workforce in the physical and life sciences. The project includes construction of a new 127,610 gsf Interdisciplinary Sciences building and renovating 33,056 sf of existing institutional assets. Using five-year projections, the University estimates a need to increase laboratory and research space by 120,000 gsf for students seeking careers in science and health. This expansion will provide state-of-the-art STEM teaching laboratories for chemistry, biology, and physics, removing instructional bottlenecks and facilitating timely progress to graduation and the workforce.



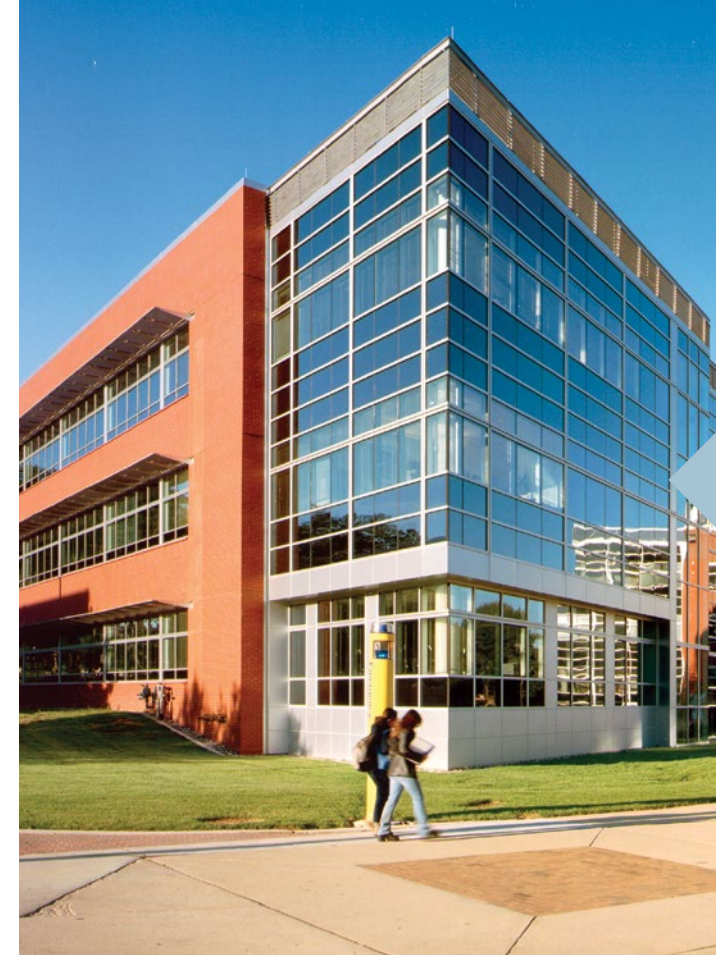
\$50,000,000

Total Awarded Funding

ROWAN UNIVERSITY

West Campus Infrastructure and Research and School of Nursing and Health Professions Facility Project

Rowan University is undertaking the next phase of development of its West Campus with a multi-pronged strategy for expansion and growth. This project advances this strategy by constructing a translational engineering and biomedical sciences research tower, a clinical learning center, offices for the school of nursing, and infrastructure to support these and other existing and planned facilities at this location. Leveraging Rowan University’s partnership with Virtua Health and the ideal geographical location of the West Campus at the confluence of the “eds and meds” corridor, the project will significantly increase research capacity and educational opportunities in the region.





\$40,000,000

Total Awarded Funding

WILLIAM PATERSON UNIVERSITY

WP — Recreation Center Renovation & Addition

William Paterson University will conduct the renovation of, and addition to, the existing 44,300 sf Recreation Center. The funds will be used for the project's Design and Construction phases of the project. The 3,300 gsf of existing space will be renovated to create a training room, sports therapy and rehabilitation instructional Lab. An 80,000 gsf two-story addition will include: a 41,750 sf natatorium and locker room, 7,250 gsf fitness center, program space for a 7,000 gsf wellness center, and 24,000 gsf for new classrooms and lab space for nursing, kinesiology, and movement sciences programs.

\$33,006,746

Total Awarded Funding

THE COLLEGE OF NEW JERSEY

Educating New Jersey's Next Generation Health Workforce

Focusing on the needs of the 21st Century student, TCNJ's \$33.09M Educating New Jersey's Next Generation Health Workforce project will reimagine instructional and academic support spaces, enhance network connectivity and access, and acquire necessary equipment to strengthen TCNJ's state-of-the-art and integrated pedagogical and research objectives. TCNJ's approach is: (1) designed to meet the dynamic challenge of educating tomorrow's diverse workforce for the rapidly growing employment projections across the health professions, and (2) driven by deep integration of high-impact experiences proven to positively affect graduation and employment placement rates.



\$31,760,461

Total Awarded Funding

RAMAPO COLLEGE OF NEW JERSEY

Linden Hall Renovation

The Linden Hall renovation repurposes a 30-year-old residence hall into a hub for student-centered and administrative programs that demonstrate a record of supporting student academic achievement and success. In accordance with Ramapo College of New Jersey's Campus Facilities Master Plan, this project involves the relocation of administrative services out of Ramapo's academic core so that approximately 26,000 sf of programmable space can be returned to academic and student facing programming. In all, this project will benefit the entire Ramapo community by increasing Ramapo's capacity to deliver in-demand academic, administrative, and student-centered services to the residents of our State.

\$19,526,807

Total Awarded Funding

STOCKTON UNIVERSITY

Library Learning Commons Project

Stockton University's Library Learning Commons Project creates a model university learning environment centered on increasing student success through development of flexible learning spaces integrated with state-of-the-art technology that supports experiential pedagogies. The Project addresses evolving trends in digital library design as it advances student learning as well as responds to issues in long-range deferred maintenance. By emphasizing collaborative learning in technology-enhanced, flexible spaces, the Project forefronts the importance of industry-valued technology to the curriculum, student learning, and work pathways. This approach encourages students to develop dispositions required of professionals in the skilled workforce.



\$16,435,127

Total Awarded Funding

KEAN UNIVERSITY

Kean University's Experiential Learning Center (ELC)

Kean University will construct and equip a 50,000 square foot Experiential Learning Center on the University's Main Campus. The ELC's cross-disciplinary spaces will prepare students for in-demand careers, provide enrichment outside of the classroom, and allow students to interact with Kean University community members in a real-world environment. It will encompass maker spaces, career services, the Center for International Studies, a remote teaching and learning lab, AI/robotics makerspace, a space for entrepreneurs, multi-media center, and an experiential exhibit space.



\$14,500,000

Total Awarded Funding

RUTGERS, THE STATE UNIVERSITY OF NEW JERSEY

Research Computing Service Expansion University-Wide
Office of Information Technology

Many of today's most critical research problems require access to massive amounts of data and the research computing environments that will allow them to perform the necessary data analytics. With this ELF grant Rutgers will acquire three systems that will be tightly coupled and designed to support current and future data-intensive research and education projects. The three systems are a traditional High-Performance Computing environment, an OpenStack Protected Environment (for research and education projects that require access to sensitive data), and a large-scale data storage system designed to support the massive amount of data being generated by research instruments.



ATLANTIC CAPE COMMUNITY COLLEGE

Information Technology Infrastructure
Improvement (ITII)

The Information Technology Infrastructure Improvement will make significant improvements to Atlantic Cape Community College's IT infrastructure. The project consists of two improvements; a Data Center Replacement project and a Network Switch Distribution Switch upgrade project. The Data Center Replacement will upgrade the College to a modern and efficient Cloud Computing model for data, servers, and network storage. The College wide Network Distribution Switch upgrade project will provide an enhanced network infrastructure at all three campuses, to support reliable network connectivity for the College, including the transition to a modern Cloud Computing model.

\$434,088

Total Awarded Funding

*BROOKDALE COMMUNITY COLLEGE

The Culinary and Hospitality Center

Brookdale Community College will construct a new academic facility on its main campus in Lincroft, NJ. The 20,000 square foot building will serve as the institution's Culinary and Hospitality Center creating synergy between the two programs by hosting them under one roof. The project entails construction of an instructional facility, installation of associated technology infrastructure, and appropriate industry-standard equipment for the facility. The new energy-efficient space will provide opportunities for non-credit to credit pathways, internships, and workplace learning to enhance the state's academic and economic competitiveness by preparing a highly skilled workforce.

\$1,764,881

Total Awarded Funding

CAMDEN COUNTY COLLEGE

"RATE" (Renewing Audiovisual & Technology
Equity)

With the "RATE" (Renewing Audiovisual & Technology Equity) Project, Camden County College (CCC) will use ELF funds to enhance audiovisual and desktop computer and peripheral equipment at three College locations: Madison Hall on the main campus in Blackwood, the Camden Technology Center and College Hall on the Camden City Campus, and the Regional Emergency Training Center in Blackwood. CCC will upgrade 31 classrooms and computer labs in Madison Hall, 14 computer labs and classrooms in Camden, and 8 classrooms and computer labs at the RETC with state-of-the-art equipment to enhance learning and teaching and equity of access.

\$1,316,000

Total Awarded Funding



COUNTY COLLEGE OF MORRIS

CCM Technology Infrastructure Upgrade and
Expansion

The County College of Morris Technology Infrastructure Upgrade and Expansion project will upgrade the campus network infrastructure to a higher speed network which will allow for increased output of data and video transmissions throughout the entire college campus. The project will include a complete forklift upgrade of CCM's network connection devices, replacement of older fiber optic cabling to allow for higher transmission speeds, and replacement of secondary power systems to keep devices continually running.

\$1,038,035

Total Awarded Funding

BERGEN COMMUNITY COLLEGE

Enhancing a Safe and Inclusive Student
Learning Environment

The Enhancing a Safe and Inclusive Student Learning Environment Project includes three components: (1) the Cerullo Learning Center Expansion component upgrades facilities for expanded and enhanced student learning assistance; (2) the Safe and Secure Student and College Community Learning Environment component enhances safety and security through upgraded information and communication infrastructure; and (3) the Diversity, Equity, and Inclusion component strengthens equitable and inclusive access for Bergen's richly diverse student population, with a focus on students with specialized learning needs through in-house closed captioning, adaptive furniture, and counseling intervention software.

\$942,553

Total Awarded Funding

CAMDEN COUNTY COLLEGE

"RIDS" (Redundancy, Infrastructure, Desktop,
Security)

To improve secure access to information and data for College constituents, CCC will install servers at three campuses; building 26 new data closets and upgrading others with a redundant power configuration to ensure network connectivity and remote access with switch stacks and power units in the data closets; replacing personal computers with VDI to lower costs and enable centralized management and maintenance while improving security; and upgrading telephony servers and the telephone system to the current release, which will allow for compliance with E911 requirements of the Kari's Law and Ray Baum's Act, improving safety for all students and employees.

\$727,191

Total Awarded Funding

COUNTY COLLEGE OF MORRIS

CCM Healthcare Building

The County College of Morris Healthcare Building Project is the development of a new, state of the art, 70,000 sf academic building dedicated to housing Health Professions & Natural Science programs. This new building will provide access to educational and training opportunities for students, while also helping address healthcare industry workforce needs. The new space will support the expansion of four credit programs, ten Workforce Development programs, and the development of two new credit and workforce programs. The project consists of the construction of classroom spaces, labs, lecture halls, and simulation labs that will support almost 1,500 students.

\$11,357,894

Total Awarded Funding

COUNTY COLLEGE OF MORRIS

CCM Instructional Equipment Project

County College of Morris Instruction Equipment Project will provide new equipment to replace or upgrade necessary resources to enhance instructional capabilities for faculty, students, and the community. The equipment, totaling \$2,000,000, will benefit over 5,000 students in several academic programs including business administration, paramedic science, respiratory therapy, nursing, biology and chemistry, radiography, information technology, performing arts, fine arts, media technology, and culinary arts and science. These equipment purchases offer dedicated instructional equipment for student use for practice, experience, and familiarity in order to better prepare them for direct entry into the workforce or to further advance their education.

\$2,000,000
Total Awarded Funding

DREW UNIVERSITY

Creative Commons and Classroom Renovation in the Library

The project entails renovations to Drew University's Learning Center to construct a Creative Commons and an active learning classroom to better serve 21st century students. The Commons will provide a central, creative location serving all students engaged in film, video, digital media, art, and other production projects by enabling them to engage in experiential learning opportunities using multiple media. The active learning classroom will feature flexible furniture and technology to support in-class group projects and other collaborative learning activities. This will also serve as a gateway initiative for a more comprehensive, community-involved refurbishment of the entire University Learning Center.

\$2,846,999
Total Awarded Funding

DREW UNIVERSITY

Technology Infrastructure Upgrade

This project will entail necessary upgrades to the university's technology infrastructure to better serve 21st century students. The technology infrastructure is the backbone that supports academic programs and experiential learning opportunities, which now incorporate a wide array of media and digital production. Specific components of the project include the installation of a modern, high-capacity firewall; core network switch upgrades; replacement of obsolete edge switches; and the replacement of hardware for a data back-up system. These are the top priorities of the university's Technology Master Plan, which will stabilize and improve the core network in preparation for additional migrations to the cloud.

\$561,955
Total Awarded Funding

FAIRLEIGH DICKINSON UNIVERSITY

Library Learning Center

The project enhances the current model of student support in the Monninger Center for Learning and Research to propel the university library as the hub for digital learning, interdisciplinary exploration and global connections through a learning commons model. The project upgrades spaces to promote experiential learning, foster research, and global connections to FDU's history, community, and the environment. Both physically and functionally, through heightened collaboration and innovation, the library is elevated as a place where students' thirst for inquiry and discovery is supported through the creation of accessible, functional spaces, instruction, technology, and collections.

\$8,406,000
Total Awarded Funding

FAIRLEIGH DICKINSON UNIVERSITY

Network Segmentation and Access Analytics

FDU sought ELF funding to complete a Firewall Segmentation and Access Analytics Project that adds equipment and software-based logical layering to its physical network that balances the competing imperatives of enforcing security protocols and policies while concurrently ensuring individuals are accessing the components of the university's information technology ecosystem in accord with the needs of their operating units. When implemented, stakeholders will have role-based access to both the instruments, assets, external endpoints, and services they need, and the various compute, storage, applications, and other tools at their disposal, while significantly improving the security profile and performance for the university's network.

\$2,507,570
Total Awarded Funding

FAIRLEIGH DICKINSON UNIVERSITY

Standards-based Upgrades to Networking and Telecommunications IDF Locations

The Standards-based Upgrades to Networking and Telecommunications Distribution Facilities project will remedy issues with network closets that connect all campus facilities and users' devices to the information technology resources resident in our main campus data centers, brought on by the increased capacities and capabilities of recently acquired network gear. When completed, all university stakeholders will benefit from a complement of network distribution locations that are accessible and fire safe for personnel, energy efficient, highly available, resilient, reliable, and consistent, thereby ensuring that all equipment items attaching to them perform in accord with the university's service level agreements.

\$2,648,364
Total Awarded Funding

FELICIAN UNIVERSITY

Expanding Equitable and Interdisciplinary Experiential Learning for a Highly Skilled Nursing Workforce

Through this project, Felician University will acquire state-of-the-art nursing simulation technology and related equipment for use by nursing students and faculty. Custom, simulated healthcare scenarios will be delivered in-person or virtually for nursing students at all levels. Experiential learning in these dynamic, lifelike healthcare settings will foster critical thinking, collaboration, team-based learning, and skill development with diverse patient populations of all ages. The project will address New Jersey's needs for a larger and more diverse nursing workforce, ensuring that Felician nursing graduates are among the most skilled, prepared, and workforce-ready nursing graduates in the state.

\$933,681
Total Awarded Funding

GEORGIAN COURT UNIVERSITY

Nursing and Science Equipment

Funding from the Higher Education Equipment Leasing Fund will be used for critical laboratory equipment for our nursing and science departments. These pieces of equipment will enhance the education provided by our Departments of Nursing, Biology, Chemistry and Biochemistry, and Physics. Items include simulation manikins, spectrometers, gas chromatographic systems, and microscopes. Many items are replacing decades-old instruments that are at the end of their useful life. Other items are critical needs for students studying and researching within the various disciplines. The enhancement of our laboratory sciences will better prepare our students for post-graduation life.

\$1,119,336
Total Awarded Funding

GEORGIAN COURT UNIVERSITY

Technology Infrastructure Upgrade: Fiber Cabling & Firewall

Georgian Court University's project, Technology Infrastructure Upgrade: Fiber Cabling & Firewall, will use HETI funding to add single mode fiber cabling and replace two perimeter firewalls on campus. Single mode fiber cabling is needed to support higher bandwidth and speed. The firewalls will replace two units past their useful life. The new technology will impact thousands of students, faculty, and staff over the lifespan of the equipment, enhance the university's overall proficiency and productivity, and help to ensure a safe and secure network.

\$541,666
Total Awarded Funding

HUDSON COUNTY COMMUNITY COLLEGE

The Tower Network Infrastructure Project

Hudson County Community College is planning technology infrastructure for its new Tower building. The 11-story building will house academic, administrative, and multi-purpose spaces serving the College and surrounding community. The Tower requires a high-speed, resilient network to achieve open access and educational success goals for in-demand programs. State-of-the-art CAT 6a Ethernet will connect the network infrastructure of fiber-optic cable and high-speed, redundant switches. This cable infrastructure will traverse a protective conduit to achieve cost-effective, high-quality network connectivity. This building achieves next-level integration within the College and across educational institutions, K-12 and Higher Education, in New Jersey.

\$673,779
Total Awarded Funding



MIDDLESEX COLLEGE

Reimagining Research and Instruction Spaces at Middlesex College

Reimagining Research and Instructional Spaces at Middlesex College, will fund interior improvements & computer equipment to transform 60% of two-story, 1967 Library into "Library Learning Commons" and study rooms; technology outfitting and rigging for proscenium main stage Performing Arts Center and "Black Box" Studio Theatre, will support a forthcoming A.A.S. Theater Technology degree program; new Fine Arts New Media Lab to expand curriculum instruction into digital technology-based media and be a professional career/transfer portfolio workshop; electronic engineering technologies curriculum tools upgrade for EET certificate/ A.A.S. degree program; the largest in NJ. The project's new equipment will be LED and ENERGY STAR certified.

\$1,826,703
Total Awarded Funding

MONTCLAIR STATE UNIVERSITY

Campus Wi-Fi and Firewall Upgrade

The Campus Wireless and Firewall Upgrade Project will deliver necessary improvements to wireless networking, data security, data communications infrastructure, and business operations for the Montclair State University and Bloomfield College campuses. This comprehensive technology infrastructure upgrade includes higher network bandwidth and increased capacity for the growing number of Wi-Fi-enabled devices on each campus, improved real-time communication enabling distance, online and hybrid learning; leveraging of technology for education, research, and community service; improved institutional collaboration; shared high-speed Internet connectivity, and next-generation security capabilities to safeguard mission-critical data and computing resources across both campuses.

\$9,200,769
Total Awarded Funding

OCEAN COUNTY COLLEGE

Library Modernization Project

The Ocean County College Library Modernization Project will enhance and update communication, academic support, experiential learning, access, and information services, and improve inter-agency collaboration through Interlibrary Loan services for OCC Library patrons, students, faculty, and staff. OCC provides critical services to students and the community through the library, including archives, shared spaces, and "mini-labs" for students to conduct hands-on projects and activities. The modernization of this space will allow for soundproofed collaboration rooms, podcast recording support, "smart" furniture with built-in charging support, on-line meeting resources, and more.

\$51,875
Total Awarded Funding

OCEAN COUNTY COLLEGE

Ceramics Class and Lab Conversion to Allied Health Class and Lab Shared Spaces

Ocean County College Ceramics Lab to Allied Health Lab Conversion Project will convert the underutilized ceramics lab and adjacent classroom in the Grunin Arts Building into an Allied Health Classroom and Lab shared space, to be used to facilitate students in non-credit allied health programs completing required courses to earn certificates and potentially to transition from non-credit to credit health programs. Costs include renovation of a classroom that combines rooms B119, B120, B121, and B122 and a lab that combines rooms B115, B116, B117, and B118, and purchase of interactive instructional equipment, iPads, and classroom furniture.

\$366,765
Total Awarded Funding





PASSAIC COUNTY COMMUNITY COLLEGE

PCCC Center for Integrated Health Sciences

Passaic County Community College will construct a two-story, 23,253 sf Center for Integrated Health Sciences, where local residents will prepare for emerging healthcare careers. The new facility—to be connected to the PCCC Nursing Center—will form a health sciences campus at the site of the PCCC Passaic Academic Center in Passaic, New Jersey. The new facility will expand opportunities for local residents to access high-skill, high-wage healthcare careers in areas of acute healthcare worker shortage.

\$9,975,151
Total Awarded Funding

RARITAN VALLEY COMMUNITY COLLEGE

Enhancing the campus data network for currency, capacity and security

The enhancing the campus data network for currency, capacity, and security project has three components: first replacement of the network firewalls with current 'next generation firewalls'; second, replacing the campus wireless data network; third, replacing outdated data cabling in the College Center building.

\$300,087
Total Awarded Funding

ROWAN COLLEGE AT BURLINGTON COUNTY

Next Generation Enterprise Network Ver 2.0

Rowan College at Burlington County's Next Generation Enterprise Network Ver 2.0 (NGEN2) project will replace existing outdated network switches and wireless network access points to ensure the College's network can effectively support mobility and cloud computing and respond to the changing threat environment.

\$1,037,484
Total Awarded Funding

ROWAN COLLEGE AT BURLINGTON COUNTY

Expanding RCBC's Footprint and Community Visibility

Rowan College at Burlington County's multifaceted program, Expanding RCBC's Footprint and Community Visibility, will revitalize the college's Agribusiness program, support and build the skills and experience level of our culinary, art and design, hospitality, and business majors, and establish a novel partnership with a local nonprofit that will expand experiential learning opportunities for students across the college and increase the college's visibility and engagement with surrounding towns.

\$254,813
Total Awarded Funding

ROWAN COLLEGE OF SOUTH JERSEY

Upgrading Classroom Technology in the Alampi Science Building

Rowan College of South Jersey–Cumberland Campus will use the Equipment Leasing Fund to purchase and install intelligent learning technology in five classrooms in the Alampi Science Building, which is not equipped with the appropriate modern classroom technology and devices to deliver high-quality in-class and remote instruction.

\$250,000
Total Awarded Funding

ROWAN UNIVERSITY

Card Access and Surveillance Improvements

Recognizing the fundamental necessity of video surveillance in a modern campus environment, the University has made significant investments in this ecosystem. With each new building or campus renovation, our facilities, IT, and public safety teams collaborate and partner with vendors to plan out and provide effective, efficient coverage to help ensure the safety of our community members. The proposed project will help us expand this existing environment into spaces that have not previously been outfitted with surveillance cameras, including numerous academic, outdoor, residential, research and student life spaces.

\$3,302,840
Total Awarded Funding

ROWAN UNIVERSITY

Remote Service Improvements

Virtual Desktop Infrastructure has been a standard service in many settings for nearly 20 years. VDI environments allow users with a variety of managed and unmanaged personal devices to securely access applications and virtual desktop environments hosted in a managed virtualized or cloud environment. Historically this type of service has been used in environments with sensitive data or legacy applications to meet a range of security and compliance requirements. During the pandemic, the institution expanded its VDI service to meet the needs of the moment, and given that success this project will expand and make this service permanent.

\$1,415,503
Total Awarded Funding

ROWAN UNIVERSITY

Core Network and Datacenter Telecommunications Infrastructure

This project includes major updates to several significant components of the ecosystem that underpins the Rowan Network, including the institution's core and border network, core firewalls, data center storage services, backups and data recovery improvements, and centralized load balancers. While periodic updates and replacement cycle funding are accounted for in the university's operating budget, these updates fundamentally rethink and re-architect the services they support in order to position the university for continued success and expansion in the future as the university's academic and research needs become more diverse and further expand.

\$8,000,000
Total Awarded Funding

*ROWAN UNIVERSITY

Business Continuity and Disaster Recovery Improvement

Rowan University presently has two main data centers located on our campus in Glassboro. While these data centers are configured to maintain services if one data center goes offline, they do not meet modern expectations for disaster recovery and business continuity considerations. This project includes establishing a new disaster recovery site at a facility more than 20 miles from the main campus in Glassboro and includes considerations for the establishment of the facility itself, server and storage integrated systems, networking and telecommunications integrated systems and connectivity to the site from both the internet and the University's campuses.

\$7,415,503
Total Awarded Funding

*RUTGERS, THE STATE UNIVERSITY OF NEW JERSEY

Wi-Fi Technology Upgrades University-Wide Office of Information Technology

Rutgers will refresh its wireless technology infrastructure to provide next-generation wireless to enable a secure, efficient, mobile-first approach in supporting our students in teaching, learning and research. An upgrade to this outdated equipment will enable network software-based business process automation solutions. These new innovations of automated provisioning, monitoring, calibration, troubleshooting and problem resolution will result in improved Wi-Fi performance, a reduction in errors, and faster wireless access. In so doing, these improvements will enhance the access and capabilities of a network that is essential to the daily operations of the University and to advances and innovations of its educational community.

\$12,815,503
Total Awarded Funding

RUTGERS, THE STATE UNIVERSITY OF NEW JERSEY

Modular Research Data Center University-Wide Office of Information Technology

This project entails building a new 1.2 megawatt Modular Data Center on the Rutgers Livingston campus dedicated to centrally managed research computing. Research is essential to Rutgers' mission, and the work associated with this grant will help to power innovations in fields as disparate as climate science, computational nanomechanics, and the digital humanities. The new facility is projected to provide space, cooling, and power for planned capacity expansions by the Office of Advanced Research Computing. This project covers land preparation, electrical utilities expansion, and the Modular Data Center itself.

\$3,538,757
Total Awarded Funding



RUTGERS, THE STATE UNIVERSITY OF NEW JERSEY

Academic Space Upgrades Multiple Locations Rutgers University — Camden

This project will comprise renovations of finishes, lighting, mechanical, furniture, technology, and equipment in forty-four lecture halls and classrooms in Armitage Hall, the Business and Science Building, and the Fine Arts Building, Rutgers University-Camden. These significant improvements to the teaching and learning environment will provide major enhancements to the campus and lead to long term benefits for the Rutgers University-Camden community.

\$3,000,000
Total Awarded Funding

RUTGERS, THE STATE UNIVERSITY OF NEW JERSEY

Equipment Replacement University-Wide Office of Information Technology

The Office of Information Technology's Video Collaboration Equipment Replacement project will upgrade its collaboration hardware to the current generation to continue to offer state-of-the-art and next-generation video conferencing based on industry standard technologies. This new generation of equipment will significantly improve the ability for faculty, students, researchers, and other members of the Rutgers community to connect with colleagues within the university and beyond, whether in industry, government, nonprofits, or other educational institutions. These technologies and collaboration tools are clearly essential for a world-class learning environment, for innovative research, and for the overall operation of a major research university such as Rutgers.

\$1,321,136
Total Awarded Funding

RUTGERS, THE STATE UNIVERSITY OF NEW JERSEY

Network Switch Replacement University-Wide Office of Information Technology

This project (Network Switch Replacement) will upgrade the end-of-life enterprise switches on Rutgers University's data network (RUNet), providing for faster speeds and power efficiency, and enabling a secure, efficient, mobile-first approach in support of our students, faculty, and staff in teaching, learning and research. By replacing these outdated switches, Rutgers will increase port speeds from 100Mbps/1Gbs to 10Gbs and improve the reliability and security of a network that is essential to the daily operations of the University and to the advances and innovations of its educational community.

\$1,344,728
Total Awarded Funding

RUTGERS, THE STATE UNIVERSITY OF NEW JERSEY

Enterprise Server Infrastructure University-Wide Office of Information Technology

Rutgers University will integrate the two existing central virtual hosting environments into an Active/Active model which supports automated fail-over in the event of disruptions to either data center. In addition, compute and storage capacity will be expanded in both locations to offer short-term subsidized services for distributed units looking to turn off legacy equipment. This architecture will reduce the impact of IT maintenance on the research and educational mission of the University while reducing deferred maintenance and technical debt.

\$8,700,000
Total Awarded Funding

SETON HALL UNIVERSITY

Re-envisioning Walsh Library for the 21st Century

Seton Hall University will renovate Walsh Library's first floor to augment traditional classroom experiences, promote experiential and project-based teaching and learning, and unify disparate student success resources into a "one-stop" model. This funding will increase the types of spaces students desire, including expanding dynamic group work; increasing Library access and 24-hour zones; providing specialized equipment; adding capability for in-person and distance collaboration; expanding centers and institutes that facilitate experiential learning; and supplementing the types of technology students will creatively use to demonstrate digital literacy and learning outcomes across disciplines.

\$2,000,000
Total Awarded Funding

*SAINT PETER'S UNIVERSITY

STEM, Health Sciences and Nursing Capital Project

Saint Peter's University, a Hispanic Serving Institution, will construct a 25,500 sf Health Sciences Center and renew its primary STEM instructional and laboratory building. This project expands instructional spaces, providing students with state-of-the-art facilities commensurate with the University's high-quality education to "enhance New Jersey's competitiveness in the global market, and help drive innovation and discovery." It supports on-campus and virtual learning, research and collaboration focusing on STEM, health sciences and nursing programs. These facilities, outfitted with the latest equipment and technology, will greatly enhance the learning experience, expand enrollment and prepare students for in-demand, 21st century jobs.

\$2,343,669
Total Awarded Funding

STEVENS INSTITUTE OF TECHNOLOGY

High-Performance Computing Cluster to Support Advanced Computing Capability and Future Growth in Experiential Learning and High Impact Research Areas

Stevens Institute of Technology will create a state-of-the-art hybrid High-Performance Computing Cluster. The HPCC will enable high-impact research in areas critical to national and state needs and provide experiential learning opportunities, digital skills and hands-on experiences with the latest technology tools and capabilities, preparing students for employment in high-wage, high-growth jobs. The HPCC will support multiple departments and research centers, strengthening Stevens' robust interdisciplinary education, training and research opportunities in the areas of resilience and sustainability, artificial intelligence, machine learning, data visualization, fluid dynamics, aerodynamic and hypersonic transport, financial technology and quantum computing.

\$3,500,000
Total Awarded Funding

STOCKTON UNIVERSITY

Academic Classroom Technology Innovation Project

Stockton University's Academic Classroom Technology Innovation Project will strategically transform the oldest building on campus into a state-of-the-art learning facility containing a 250-seat multi-experience auditorium, 24 technology infused classroom upgrades, a technology enhanced atrium, three high-capacity innovation driven computer labs, and a completely upgraded Wi-Fi network. This digital transformation will give students seeking careers in science, technology, engineering, and mathematics the tools and space required to prepare for Industry 4.0 through the explorations of artificial intelligence, cybersecurity, extended/augmented reality, actionable analytics, and data mining. This innovative space also will help support the modern technological learning needs of the entire University.

\$1,808,460
Total Awarded Funding

SUSSEX COUNTY COMMUNITY COLLEGE

Campus-Wide Technology Enhancement to Support In-Demand Curriculum

Sussex County Community College will improve technology on the college's main campus in an effort to enhance and expand educational opportunities for students. Classrooms will be upgraded with interactive solutions such as interactive whiteboards to promote active learning and increase student engagement. The network will be upgraded with network switches and a new storage area network to support more machines on the network, increase connectivity, and improve overall network security. The college will also utilize this grant to transform the traditional library space into a multi-use learning commons space that aligns with modern student needs.

\$1,052,851
Total Awarded Funding

SALEM COMMUNITY COLLEGE

SCC: Emergency Management Communications Project

As part of the college's emergency management strategy, the institution has performed table-top exercises to test its emergency management plan. A weakness was discovered where, during a complete outage, cellular signal was not available in the public safety offices. The availability of cellular communications in the event of a disaster is critical to the safety of the college's students and staff. The project presented as part of this grant application expands and strengthens cellular signal to the public safety offices, as well as the Glass Education Center which is a high-risk environment.

\$40,975
Total Awarded Funding

WILLIAM PATERSON UNIVERSITY

Technology Infrastructure Modernization Project

The Technology Infrastructure Modernization project is designed to further develop and support the modernization of the William Paterson University technology infrastructure enhancing reliability, security, and access to information technology resources over the campus fiber network, which is in place for academic instruction and business continuity. Infrastructure technology upgrades are objectives in the approved Information Technology Plan and the William Paterson University Strategic Plan 2012-22 to ensure the campus is fully modernized as we replace older Wi-Fi and switching network equipment with newer, more powerful, less power-consuming equipment to continue making the university "greener."

\$2,266,000
Total Awarded Funding

*THOMAS EDISON STATE UNIVERSITY

Information Technology Network Upgrades

Information Technology Upgrades — The total cost of the project is \$1,605,354, including a \$1,485,060 grant from the Higher Education Equipment Leasing Fund and \$120,294 from the Higher Education Technology Infrastructure Fund. The ELF portion of the project includes state-of-the art networking equipment to support the mission and objectives of the institution. The acquired equipment will be used to provide a solid platform to support the networking needs of the University's staff and students. The HETI portion of the project will upgrade the network cabling and fiber links within the University's main Kelsey Townhouse Complex facility.

\$1,541,818
Total Awarded Funding

WILLIAM PATERSON UNIVERSITY

Workday Student Project

Digital transformation is revolutionizing many aspects of education across the country and is also happening at William Paterson University. The Workday Student Implementation, which replaces modules in Banner, our existing enterprise resource planning platform, for admissions, advising, records, financial aid, registration, and finance, will be transformative for students' success at William Paterson. Workday will fundamentally modernize WPU's student processes in these departments, such as degree audits and registration for courses. The university is confident that this transformative implementation will result in many benefits to its students, from streamlining financial aid to guiding them on their path to graduation.

\$639,503
Total Awarded Funding

WARREN COUNTY COMMUNITY COLLEGE

WCCC Learning and Instructional Technology Upgrade Program (LIT-UP).

WCCC's Learning and Instructional Technology Upgrade Program (LIT-UP) has four components: active learning classrooms (39), library workstation upgrades (48 Units), computer lab upgrades (4 Labs), and server room upgrades. Together these projects relate to the delivery of educational services. The active learning classrooms will be new generation technology to all lecture rooms; the library and the computer lab projects will serve to upgrade all open student lab computers and four computer labs. The server room upgrades will help WCCC move all systems to the "cloud."

\$782,815
Total Awarded Funding



“IN NOVEMBER 2021 GOVERNOR MURPHY CONTINUED THE USE OF THE GRANT PROGRAM WHEN HE ANNOUNCED THAT \$400 MILLION IN GRANTS WOULD BE MADE AVAILABLE TO THE STATE’S COLLEGES AND UNIVERSITIES.”

\$395,095,086
Total Awarded Funding for 54 projects

*Single Project with funding from Multiple Programs

HISTORICAL FINANCINGS



ATLANTIC CAPE COMMUNITY COLLEGE

- **Series 1999 B:** \$3,045,000; renovations, expansions, improvements

BETH MEDRASH GOVOHA

- **2000 Series G:** \$8,505,000; new dining hall, dormitory and administration building renovations

BLOOMFIELD COLLEGE

- **1998 Tax-Exempt Lease:** \$315,000; equipment acquisition
- **2000 Series A:** \$6,270,000; new library, library and college center renovations, equipment purchase
- **2013 Series A:** \$32,267,000; refunding of a bank loan and new residence hall

CALDWELL UNIVERSITY

- **Bond Anticipation Note Issue M (1990):** \$3,000,000; library addition and renovation
- **1995 Series A:** \$4,800,000; academic building
- **2000 Series B:** \$9,235,000; student recreation center, parking lot and roadway improvements
- **2006 Series F:** \$21,400,000; refunding of 1995 Series A and 2000 Series B bonds, and student residence hall
- **2013 Series A:** \$20,000,000; refunding of 2006 Series F, residence hall renovations/upgrades and student center improvements
- **2019 Series A:** \$17,000,000; refunding of 2013 Series E Bonds
- **2019 Series B:** \$3,000,000; renovation of residence halls, technology upgrades, and other miscellaneous capital improvements to the University's campus facilities

CENTENARY UNIVERSITY

- **1998 Tax-Exempt Lease:** \$640,000; computer and equipment acquisition
- **2000 Series F:** \$6,130,000; Equestrian Center
- **2003 Series A:** \$14,775,000; student residence hall, computer acquisition, and refunding of 2000 Series F bonds
- **2006 Series J:** \$9,154,113; refinancing of a bank loan

- **2007 Series B:** \$4,784,617; refinancing of a bank loan and various capital improvements
- **2010 Series D:** \$13,974,000; refinancing of the Performing Arts Center and Recreation Center, waste management facility

DREW UNIVERSITY

- **Bond Anticipation Note Issue I (1980):** \$8,875,000; library addition and renovation
- **Bond Anticipation Note Issue I — Collateralized — Renewal One (1982):** \$11,690,000; refinancing of Bond Anticipation Note Issue I (1980) and finance the library addition and renovation
- **Bond Anticipation Note Issue K (1984):** \$4,500,000; computer acquisition
- **Bond Anticipation Note Issue I — Collateralized — Renewal Two (1985):** \$11,935,000; refinance of Bond Anticipation Note Issue I — Collateralized — Renewal One (1982) and finance the library addition and renovation
- **1985 Series B:** \$12,275,000; refinancing of BAN Issue I — Renewal Two for library addition and renovation
- **1992 Series E:** \$29,180,000; athletic center
- **1997 Series B:** \$9,140,000; refunding of 1985 Series B bonds
- **1998 Series C:** \$27,935,000; refunding of 1992 Series E bonds
- **2003 Series C:** \$20,855,000; deferred maintenance
- **2007 Series D:** \$29,135,000; student housing, renovation of existing student housing and partial refunding of the 1998 Series C bonds

- **2008 Series B:** \$10,765,000; refunding of 1998 Series C bonds
- **2008 Series I:** \$12,000,000; capital improvements
- **2010 Series C:** \$15,580,000; refinancing of 2003 Series C and 2007 Series D bonds, acquisition and installation of a computing system, and University Center renovations
- **2008 Series I (2011 Tranche):** \$12,000,000; capital improvements

ESSEX COUNTY COLLEGE

- **Series 1999 C:** \$4,570,000; renovations

FAIRLEIGH DICKINSON UNIVERSITY

- **1972 Series A:** \$4,080,000; student residences
- **1985 Series C:** \$7,000,000; recreation center
- **1991 Series C:** \$8,700,000; equipment purchases
- **1993 Series C:** \$40,000,000; residence hall, recreation center, renovations, and refunding of 1972 Series A and 1991 Series C bonds
- **1998 Series G:** \$16,615,000; student housing facility
- **2002 Series D:** \$63,650,000; new residence halls and academic building, student center addition, renovations
- **2004 Series C:** \$35,285,000; refunding of 1993 Series C bonds
- **2006 Series G and 2006 Series H:** \$16,652,544; refunding of 1998 Series G bonds and refinancing of various loans
- **2014 Series B:** \$51,925,000; refunding of 2002 Series D bonds
- **2015 Series B:** \$19,675,000; refunding of 2004 Series C bonds
- **2021 Series A:** \$63,785,000; refunding of all or a portion of the 2006 Series G, 2006 Series H, 2014 Series B and 2015 Series B bonds and various capital improvements to campus facilities



HISTORICAL FINANCINGS (CONT.)

FELICIAN UNIVERSITY

- **1996 Series A:** \$2,040,000; academic buildings
- **1997 Series D:** \$12,550,000; property acquisition and refunding of 1996 Series A bonds
- **1998 Tax-Exempt Lease:** \$897,000; telephone/telecommunications equipment acquisition
- **2006 Series I:** \$11,445,000; refunding of 1997 Series D bonds

GEORGIAN COURT UNIVERSITY

- **1991 Series, Project A:** \$7,410,000; library and student lounge
- **1998 Series, Project B:** \$6,455,000; renovations and refunding of 1991 Series, Project A bonds
- **2003 Series, Project C:** \$15,215,000; new residence hall, renovation of Arts and Sciences Building and library
- **2007 Series, Project D:** \$26,980,000; Wellness Center and partial refunding of 2003 Series, Project C bonds
- **2007 Series H:** \$1,050,000; property acquisition
- **2017 Series G:** \$13,325,000; capital improvements and renovations to University buildings and facilities; refunding of a portion 2007 Series D and 2007 Series H bonds
- **2017 Series H:** \$14,095,000; capital improvements and renovations to University buildings and facilities; refunding of a portion 2007 Series D and 2007 Series H bonds

HUDSON COUNTY COMMUNITY COLLEGE

- **Series 1999 D:** \$7,750,000; land acquisition
- **Series 1999 G:** \$2,035,000; property acquisition and construction

INSTITUTE FOR ADVANCED STUDY

- **1980 Series A (Collateralized):** \$8,775,000; rehabilitation and renovations

- **1991 Series B:** \$17,895,000; administration building, equipment purchase, and refunding of 1980 Series A bonds
- **1997 Series F and 1997 Series G:** \$42,875,000; renovations to member housing and refunding of 1991 Series B bonds
- **2001 Series A:** \$11,000,000; School of Natural Sciences, Building “D” renovations, capital projects
- **2006 Series B:** \$29,600,000; partial refunding of 1997 Series G and 2001 Series A bonds
- **2006 Series C:** \$20,000,000; Simons Center for Systems Biology, network and utility upgrades and Visitor’s Housing Facility
- **2008 Series C:** \$11,255,000; partial refunding of 1997 Series F bonds and refunding of 1997 Series G bonds

INSTITUTE FOR DEFENSE ANALYSES

- **2000 Series D:** \$16,695,000; property acquisition, office facility and parking
- **Remarketing (2008):** \$15,015,000; remarketing of 2000 Series D bonds
- **Remarketing (2015):** \$11,070,000; remarketing of 2000 Series D bonds
- **Amendment (2019):** \$7,865,000; extension of bank holder rate of 2000 Series D Bonds

KEAN UNIVERSITY

- **Series 1974 B:** \$7,960,000; student apartments
- **Series 1981 E:** \$4,185,000; Pingry School acquisition (East Campus)
- **Series 1985 D:** \$4,440,000; refunding of Series 1981 E bonds
- **Series 1991 B:** \$9,625,000; student apartments
- **Series 1993 G:** \$8,770,000; College Center addition and Library
- **Series 1998 A:** \$16,400,000; academic building and athletic facilities
- **Series 1998 B:** \$9,595,000; refunding of Series 1991 B bonds



- **Series 2001 A:** \$6,465,000; Downs Hall addition/renovations
- **Series 2003 D:** \$75,000,000; Wellness and Fitness Center, gymnasium renovations, stadium additions, Kean Building renovations, and academic building
- **Series 2005 B:** \$101,915,000; property acquisition, academic building, access road, and renovations to President’s House, East Campus, guest cottages, and Wilkins Theater, and refunding of Series 1993 G bonds
- **Series 2007 D:** \$117,795,000; two residence halls with dining facility and parking deck
- **Series 2007 E:** \$156,240,000; refunding of Series 1998 A and Series 2001 A bonds and partial refunding of Series 2003 D and Series 2005 B bonds
- **2007 Tax-Exempt Lease:** \$916,666; equipment acquisition
- **Series 2009 A:** \$179,380,000; refunding of Series 2007 E bonds
- **2010 Tax-Exempt Lease:** \$10,000,000; equipment acquisition and installation for science building
- **2011 Tax-Exempt Lease:** \$15,000,000; HVAC equipment acquisition and installation for student residences

- **Series 2015 H:** \$117,175,000; refunding of Series 1998 B and Series 2005 B bonds and partial refunding of Series 2007 D bonds
- **Series 2017 C:** \$184,230,000; refunding and defeasance of Series 2009 A bonds, and Bergen County Improvement Authority’s outstanding Series 2010 A bonds
- **Series 2017 D:** \$15,655,000; refunding and defeasance of Series 2009 A bonds, and Bergen County Improvement Authority’s outstanding Series 2010 A bonds

MIDDLESEX COLLEGE

- **Bond Anticipation Note Issue 9 (1971):** \$265,000; parking facility
- **Series 1999 E:** \$4,370,000; road, building and safety improvements

MONMOUTH UNIVERSITY

- **1975 Series A:** \$2,710,000; student union
- **1985 Series A:** \$2,150,000; academic building
- **1987 Series C:** \$1,750,000; student housing facility
- **1988 Series B:** \$10,500,000; apartment building, renovations, athletic facility
- **Bond Anticipation Note Issue L (1990):** \$5,735,000; School of Business
- **1993 Series A:** \$14,365,000; various construction and renovation projects, land acquisition, and refunding of 1988 Series B bonds
- **1994 Series B:** \$2,855,000; student housing facility
- **1994 Series C:** \$5,270,000; student housing facility
- **1997 Series C:** \$12,910,000; student housing facility, telephone system, and refunding of 1985 Series A and 1987 Series C bonds
- **1998 Series D:** \$8,815,000; telecommunications/equipment acquisition, and refunding of 1994 Series B and 1994 Series C bonds

MONTCLAIR STATE UNIVERSITY

- **Series 1972 B:** \$5,415,000; student union
- **Series 1974 D:** \$6,425,000; dormitory and dining hall
- **Series 1977 A:** \$1,720,000; student apartments
- **Series 1977 B:** \$988,000; student apartments

- **Series 1982 B:** \$15,980,000; dormitory, cafeteria
- **Series 1982 C:** \$8,245,000; student center annex and playfields
- **Series 1983 A:** \$20,720,000; refunding of Series 1982 B bonds
- **Series 1983 B:** \$10,720,000; partial refunding of Series 1982 C bonds
- **Series 1986 H:** \$21,690,000; refunding of Series 1983 A bonds
- **Series 1986 I:** \$11,010,000; partial refunding of Series 1983 B bonds
- **Series 1991 E:** \$10,260,000; academic building
- **Series 1995 F:** \$4,780,000; dormitory and renovations
- **Series 1996 C:** \$18,845,000; refunding of Series 1986 H bonds
- **Series 1996 D:** \$9,575,000; refunding of Series 1986 I bonds
- **Series 1997 D:** \$10,960,000; academic building
- **Series 1997 E:** \$9,965,000; refunding of Series 1991 E bonds
- **Series 2001 F:** \$18,695,000; parking facility
- **Series 2002 F:** \$78,500,000; student housing facility and recreational complex
- **Series 2003 E:** \$23,425,000; Performing Arts Theater and equipment
- **Series 2003 L:** \$94,540,000; academic building and refunding of Series 1995 F bonds

- **2005 Conversion:** \$101,925,000; conversion of Series 2002 F and Series 2003 E auction rate bonds to fixed rate
- **Series 2006 A:** \$98,090,000; student recreation center, parking structure, and renovations to Chapin, Finley and Mallory Halls and Panzer Gymnasium
- **Series 2006 B:** \$9,970,000; refunding of Series 1996 C and Series 1996 D bonds
- **Series 2006 J:** \$154,110,000; refunding of Series 1997 D and Series 2001 F bonds and partial refunding of Series 2002 F, Series 2003 E and Series 2003 L bonds
- **Series 2007 A:** \$6,150,000; refunding of Series 1997 E bonds
- **Series 2008 J:** \$27,545,000; student housing facility
- **Series 2014 A:** \$189,365,000; refunding of Series 2003 L bonds and partial refunding of the Series 2002 F, Series 2003 E and Series 2006 A bonds, School of Business, renovate and equip facilities for School of Communications and Media, art and design programs and filmmaking programs and to upgrade wired and wireless electronic assets
- **Series 2015 D:** \$73,770,000; refunding of Series 2003 E and Series 2006 A bonds
- **Series 2016 B:** \$118,190,000; partial refunding of Series 2006 J and Series 2008 J bonds
- **Series 1971 B:** \$280,000; student apartments
- **Series 1975 A:** \$7,275,000; student center and parking facility

NEW JERSEY CITY UNIVERSITY



HISTORICAL FINANCINGS (CONT.)

- **Series 1977 C:** \$8,570,000; refunding of Series 1975 A bonds
- **Series 1987 A:** \$2,475,000; dormitory
- **Series 1992 D:** \$15,350,000; athletic/recreation center and academic building
- **Series 1993 H:** \$2,310,000; property acquisition, administration building, parking facility, and tennis courts
- **Series 1995 A:** \$2,315,000; property acquisition for parking, maintenance and storage facilities, and an academic building
- **Series 1995 C:** \$2,175,000; refunding of Series 1987 A bonds
- **Series 1998 E:** \$6,945,000; library and recreation center renovations
- **Series 1999 B:** \$17,795,000; refunding of Series 1992 D and Series 1995 A bonds
- **Series 2002 A:** \$15,115,000; fine arts building, student union renovations, campus card technology, parking improvements, fire protection upgrades
- **Series 2003 A:** \$47,850,000; Arts and Sciences Tower, Charter School conversion, parking improvements, fire safety installation, equipment acquisition, student union renovations, ITS Department renovations, and refunding of Series 1993 H bonds
- **Series 2003 B:** \$2,300,000; renovations to Business Incubator facility
- **Series 2005 A:** \$21,575,000; student union renovations, pedestrian mall, cogeneration plant, and technology infrastructure
- **Series 2006 C:** \$5,950,000; partial refunding of Series 1999 B bonds and refinancing of a bank loan
- **Series 2007 F:** \$17,910,000; refunding of Series 1998 E bonds and partial refunding of Series 1999 B and Series 2002 A bonds
- **Series 2008 E:** \$68,445,000; debt restructuring
- **Series 2008 F:** \$6,175,000; debt restructuring
- **Series 2010 F and Series 2010 G (BABs):** \$42,375,000; refunding of Series 1999 B bonds and various capital improvements



- **Series 2015 A:** \$35,340,000; refunding of the Series 2002 A bonds and partial refunding of the Series 2008 E bonds, renovation of and addition to the Science Building, School of Business, Stegman Boulevard, Margaret Williams Theater, and HVAC improvements
- **Series 2016 D:** \$52,075,000; partial refunding of Series 2008 E bonds
- **Series 2021 A:** \$44,185,000; refunding of all or a portion of the Series 2007 F, Series 2008 F, Series 2010 , Series 2015 A, and Series 2016 D bonds

NEW JERSEY INSTITUTE OF TECHNOLOGY

- **Series 1978 A:** \$700,000; dormitory
- **Series 1982 A:** \$3,520,000; engineering building
- **Series 1982 F:** \$6,235,000; dormitory
- **Series 1986 A:** \$26,775,000; academic building
- **Series 1986 B:** \$6,815,000; refunding of Series 1982 F bonds
- **Series 1989 A:** \$20,925,000; dormitory and gymnasium addition
- **Series 1991 D:** \$14,575,000; parking facility and student support facility
- **Series 1994 A:** \$56,460,000; refunding of Series 1986 A, Series 1986 B, Series 1989 A, and Series 1991 D bonds
- **Series 1995 E:** \$33,230,000; residence hall and academic building renovations
- **Series 2001 G:** \$62,335,000; residence hall, renovations and additions to Campus Center

- **Series 2001 H:** \$12,570,000 (Federally Taxable); Enterprise Development Center
- **Series 2004 B:** \$73,530,000; refunding of Series 1994 A and Series 1995 E bonds
- **Series 2010 H and Series 2010 I (BABs):** \$71,415,000; refunding of Series 2001 G bonds and the acquisition and renovation of the former Central High School

OCEAN COUNTY COLLEGE

- **Series 1980 A:** \$1,680,000; computer acquisition

PASSAIC COUNTY COMMUNITY COLLEGE

- **Series 1999 F:** \$2,015,000; acquisition and renovation
- **Series 2010 C:** \$13,635,000; academic building

PRINCETON THEOLOGICAL SEMINARY

- **1985 Series E:** \$8,000,000; academic building
- **1992 Series C:** \$20,500,000; library addition, renovations to campus center and dormitories, and refunding of 1985 Series E bonds
- **1996 Series B:** \$16,210,000; residence hall, renovations, faculty and administrative housing, land acquisition
- **1997 Series A:** \$22,485,000; refunding of 1992 Series C bonds
- **2002 Series G:** \$26,125,000; parking garage and refunding of 1996 Series B bonds

- **2009 Series B:** \$14,435,000; refunding of 1997 Series A bonds
- **2010 Series A:** \$68,785,000; student housing and library renovation

PRINCETON UNIVERSITY

- **Bond Anticipation Note Issue H (1980):** \$5,000,000; dining hall and social facilities
- **1982 Series, Project A:** \$16,625,000; rehabilitation and repairs
- **1984 Series, Project B:** \$52,885,000; rehabilitation and repairs
- **1985 Series, Project C:** \$32,100,000; rehabilitation and repairs
- **1987 Series A:** \$28,785,000; rehabilitation and repairs, and a refunding of 1982 Series, Project A
- **1987 Series B:** \$22,285,000; rehabilitation and repairs
- **1988 Series A:** \$21,885,000; rehabilitation and repairs
- **1989 Series A:** \$15,400,000; rehabilitation and repairs
- **1990 Series A:** \$13,370,000; rehabilitation and repairs
- **1991 Series A:** \$15,185,000; rehabilitation and repairs
- **1992 Series F:** \$17,330,000; rehabilitation and repairs
- **1993 Series B:** \$17,475,000; rehabilitation and repairs
- **1994 Series A:** \$46,060,000; rehabilitation and repairs
- **1995 Series C:** \$28,865,000; rehabilitation and repairs
- **1996 Series C:** \$24,530,000; rehabilitation and repairs
- **1997 Series E:** \$22,150,000; rehabilitation and repairs
- **Commercial Paper Notes:** Not to exceed \$120,000,000; stadium and renovations and repairs
- **1998 Series E:** \$19,010,000; refunding a portion of 1994 Series A bonds
- **1998 Series F:** \$40,000,000; rehabilitation and repairs
- **1999 Series A:** \$45,500,000; refunding of Commercial Paper Notes
- **1999 Series B:** \$50,000,000; major maintenance

- **2000 Series E:** \$50,000,000; renovations/capital improvements, addition to Princeton Press
- **2000 Series H:** \$100,000,000; renovations and refunding a portion of Commercial Paper Notes
- **2001 Series B:** \$100,000,000; renovations and capital improvements
- **2002 Series B:** \$100,000,000; renovations and refunding a portion of Commercial Paper Notes
- **2003 Series E:** \$112,510,000; refunding a portion of Commercial Paper Notes
- **2003 Series F:** \$75,000,000; various new construction and renovations
- **2003 Series D:** \$114,495,000; refunding all or a portion of 1994 Series A, 1995 Series C, 1996 Series C, 1997 Series E, 1998 Series F, 1999 Series B, 2000 Series E, and 2000 Series H bonds
- **2004 Series D:** \$175,000,000; dormitory, residential college, student apartments, other renovations and improvements, and refunding a portion of Commercial Paper Notes
- **2005 Series A:** \$139,590,000; refunding all or a portion of 1995 Series C, 1998 Series E, 1998 Series F, 1999 Series A, 1999 Series B, 2000 Series E, 2000 Series H, 2003 Series E, and 2004 Series D bonds
- **2005 Series B:** \$114,645,000; various new construction and renovations
- **2006 Series D:** \$74,290,000; various new construction and renovations, and capital equipment
- **2006 Series E:** \$93,285,000; partial refunding of 1999 Series A, 2000 Series H, 2003 Series E, 2004 Series D and 2005 Series B bonds
- **2007 Series E:** \$325,000,000; various new construction and renovations, capital equipment and refunding of a portion of Commercial Paper Notes
- **2007 Series F:** \$67,620,000; partial refunding of 1999 Series A, 2003 Series E, 2004 Series D, 2005 Series A and 2005 Series B bonds
- **2008 Series J:** \$250,000,000; various new construction and renovations, and capital equipment
- **2008 Series K:** \$208,805,000; partial refunding of 2001 Series B, 2002 Series B, and 2003 Series F bonds

- **2010 Series B:** \$250,000,000; various acquisition, new construction and renovations
- **2011 Series B:** \$250,000,000; various acquisition, new construction and renovations
- **2014 Series A:** \$200,000,000; various acquisition, new construction and renovations
- **2015 Series A:** \$156,790,000; partial refunding of 2005 Series A and 2005 Series B bonds
- **2015 Series D:** \$150,000,000; acquisition, construction, renovation and installation of capital assets
- **2016 Series A:** \$109,500,000; acquisition, construction, renovation and installation of capital assets
- **2016 Series B:** \$117,820,000; partial refunding of 2006 Series D and 2006 Series E bonds
- **2017 Series B:** \$342,240,000; partial refunding of 2007 Series E, 2007 Series F and 2008 Series K bonds
- **2017 Series C:** \$141,095,000; acquisition, construction, renovation and installation of capital assets
- **2017 Series I:** \$357,105,000; refunding and defeasance of a portion of the 2008 Series J, and 2010 Series B bonds



HISTORICAL FINANCINGS (CONT.)

- **2021 Series B:** \$250,000,000; various capital improvements to campus facilities
- **2021 Series C:** \$179,265,000; refunding of all of the outstanding 2011 series B bonds
- **2022 Series A:** \$300,000,000, various capital projects

RABBINICAL COLLEGE OF AMERICA

- **1985 Series D:** \$1,883,000; student and faculty housing

RAMAPO COLLEGE OF NEW JERSEY

- **Series 1973 A:** \$1,760,000; student apartments
- **Series 1973 B:** \$1,310,000; campus life facility
- **Series 1976 C:** \$2,525,000; student apartments and expanded parking
- **Series 1978 B:** \$100,000; student housing facility
- **Series 1979 C:** \$1,325,000; campus life annex
- **Series 1984 A:** \$7,295,000; dormitory
- **Series 1986 F:** \$8,445,000; refunding of Series 1984 A bonds
- **Series 1988 B:** \$8,975,000; dormitory
- **Series 1988 C:** \$2,865,000; campus life addition
- **Series 1990 A:** \$2,270,000; dormitory renovations
- **Series 1993 D:** \$3,120,000; refunding of Series 1988 C bonds
- **Series 1993 E:** \$17,870,000; dormitories
- **Series 1997 A:** \$7,330,000; visual and performing arts center, refunding of Series 1976 C bonds
- **Direct Loan Program (1997):** \$295,910; equipment acquisition
- **Direct Loan Program (1998):** \$600,000; equipment acquisition
- **Series 1998 G:** \$16,845,000; student housing facility and pavilion, and refunding of Series 1990 A bonds
- **Series 1998 H:** \$2,000,000; campus life renovations and refunding of Series 1979 C bonds

- **Series 1998 I:** \$955,000; technology infrastructure
- **Series 1999 E:** \$19,900,000; residence hall and equipment acquisition
- **2000 Tax-Exempt Lease:** \$1,695,300; computer equipment acquisition
- **Series 2001 D:** \$40,480,000; student residence and telecommunications repairs
- **Series 2001 E:** \$2,535,000; sustainability center and instructional equipment
- **Series 2002 H:** \$28,655,000; Phase VII and Phase VIII housing
- **Series 2002 I:** \$2,145,000; student union alterations, rehabilitation, and renovations
- **Series 2002 J:** \$29,620,000; athletic building addition, Havermeyer House acquisition and renovation
- **Series 2003 F:** \$1,820,000; refunding of Series 1993 D bonds
- **Series 2003 G:** \$9,300,000; refunding of Series 1993 E bonds
- **Series 2003 H:** \$18,930,000; refunding of Series 1999 E bonds



- **Series 2004 E:** \$53,980,000; student residence hall, parking garage, and other roadway and campus improvements
- **Series 2006 D:** \$49,085,000; academic building, completion of Phase VII housing, Phase IX housing and parking garage, Sustainability Education Center, and renovations
- **Series 2006 I:** \$106,820,000; partial refunding of Series 2001 D, Series 2002 H, Series 2002 I, Series 2002 J, Series 2004 E and Series 2006 D bonds
- **Series 2011 A:** \$19,090,000; partial refunding of Series 1998 G, Series 1998 H, Series 2001 D, Series 2002 H, Series 2002 I, and Series 2002 J bonds and renovations to the student center
- **Series 2012 B:** \$80,670,000; addition and renovation to G-Wing Building, exterior renovations to Phase II College Park Apartments and refunding of Series 1998 G, Series 2002 H, Series 2002 I and Series 2002 J bonds
- **Series 2015 B:** \$45,180,000; refunding of Series 2006 D bonds and renovations to the Robert A. Scott Student Center and the College Park Apartments
- **Series 2017 A:** \$99,450,000; renovation and expansion of the George T. Potter Library; including the Learning Center Addition Project and refunding of Series 2006 I bonds
- **Series 2022 A & B:** \$81,345,000; refunding of Series 2012 B; refunding a portion of Series 2015 B and 2017 A, various capital projects and renovations

RIDER UNIVERSITY

- **1971 Series A:** \$3,700,000; Student Union
- **1987 Series B:** \$21,400,000; administration building
- **1992 Series D:** \$31,735,000; academic buildings and refunding of 1987 Series B bonds
- **1995 Series B:** \$4,819,851; equipment acquisition
- **2002 Series A:** \$27,560,000; refunding of 1992 Series D bonds
- **2004 Series A:** \$14,735,000; student residence hall and recreation center

- **2007 Series C:** \$22,000,000; student residence facility, various renovation, construction and infrastructure improvements
- **2012 Series A:** \$52,020,000; capital improvements to improve energy efficiency and refunding of 2002 Series A, 2004 Series A and 2007 Series C bonds
- **2017 Series F:** \$41,770,000; construction of 30,000-square foot addition to the Science and Technology Center; renovation and equipping of the following residence halls: Conover Hall; Delta Phi Epsilon Sorority; Kroner Hall; Lake House; Ridge House; Wright Hall; renovation and equipping of the following academic facilities: Bart Luedeke Center Theater; Fine Arts Theater; Science and Technology Center; and Sweigart Hall.
- **Reissuance (2020):** \$41,770,000; reissuance, reallocation of 2017 Series F proceeds

ROWAN UNIVERSITY

- **Series 1971 A:** \$1,205,000; student apartments
- **Series 1974 E:** \$6,080,000; student union
- **Series 1975 B:** \$580,000; Winans Dining Hall
- **Series 1976 B:** \$2,555,000; student apartments
- **Series 1979 A:** \$1,710,000; student housing facility
- **Series 1982 D:** \$1,760,000; computer facility acquisition
- **Series 1983 C:** \$10,365,000; student housing facility
- **Series 1983 D:** \$3,500,000; student housing facility
- **Series 1983 G:** \$3,385,000; student union renovations
- **Series 1985 E:** \$1,545,000; refunding of Series 1982 D bonds
- **Series 1986 C:** \$11,940,000; refunding of Series 1983 C bonds
- **Series 1986 E:** \$3,280,000; refunding of Series 1983 G bonds
- **Series 1991 A:** \$9,000,000; student recreation center
- **Series 1993 A:** \$9,600,000; new library facility
- **Series 1993 B:** \$1,765,000; refunding of Series 1976 B bonds
- **Series 1993 C:** \$10,955,000; refunding of Series 1986 C bonds

- **Series 1994 C:** \$6,145,000; cogeneration plant and equipment acquisition
- **Series 1996 E:** \$40,785,000; School of Engineering and renovations
- **Series 1997 B:** \$6,770,000; engineering building expansion and renovations
- **Series 1997 C:** \$9,035,000; refunding of Series 1991 A bonds
- **Direct Loan Program (1999):** \$3,000,000; equipment acquisition



- **Series 2000 B:** \$51,620,000; science academic building
- **Series 2001 B:** \$8,790,000; student center renovations
- **Series 2001 C:** \$60,930,000; land acquisition, refunding of Series 1979 A, Series 1993 A, Series 1994 C, and Series 1996 E bonds
- **Series 2002 K:** \$14,920,000; various renovations, land acquisition, sub-station and boilers
- **Series 2003 I:** \$64,910,000; land and computer acquisition, education building, apartment complex, chiller plant, Triad Apartment and Academy Street School renovations
- **Series 2003 J:** \$4,555,000; refunding of Series 1993 B and Series 1993 C bonds
- **Series 2003 K:** \$14,700,000; land and computer acquisition, education building, apartment complex, chiller plant, Triad Apartment and Academy Street School renovations

- **Series 2004 C:** \$61,275,000; academic building, townhouse complex, cogeneration plant, chiller, student center renovations, and other improvements
- **Series 2005 D:** \$51,840,000; refunding of Series 1997 B bonds and partial refunding of Series 2000 B bonds
- **Series 2006 G:** \$69,405,000; various renovation projects and partial refunding of Series 2002 K and Series 2003 I bonds

- **Series 2006 H:** \$20,000,000; apartment complex, academic building, property acquisition, and various renovation projects
- **Series 2007 B:** \$121,355,000; refunding of Series 1997 C bonds and a partial refunding of Series 2001 B, Series 2001 C, Series 2002 K, Series 2003 I and Series 2004 C bonds
- **Series 2008 B:** \$35,205,000; debt restructuring
- **Series 2011 C:** \$30,045,000; refunding of Series 2001 C bonds
- **Series 2016 C:** \$45,300,000; refunding of Series 2006 G and Series 2008 B bonds

RUTGERS, THE STATE UNIVERSITY

- **Series 1974 A:** \$6,725,000; student apartments

SAINT ELIZABETH UNIVERSITY

- **2000 Series C:** \$12,000,000; facility conversion and renovations to administration building, parking facility expansion

HISTORICAL FINANCINGS (CONT.)

- **2006 Series K:** \$15,000,000; Fine and Performing Arts Center and various capital projects
- **2008 Series F:** \$24,090,000; debt restructuring
- **2016 Series C:** \$21,435,000; refunding of 2008 Series F bonds and capital improvements to campus facilities

SAINT PETER'S UNIVERSITY

- **1975 Series B:** \$6,000,000; Recreational Life Center
- **1977 Series A:** \$7,290,000; refunding of 1975 Series B bonds
- **1992 Series B:** \$11,215,000; student housing facility
- **1998 Series B:** \$36,815,000; student housing facility, refunding of 1977 Series A and 1992 Series B bonds
- **1999 Tax-Exempt Lease:** \$663,000; equipment acquisition
- **2007 Series G:** \$36,053,465; partial refunding of 1998 Series B bonds and bank loans



- **2007 Series I:** \$3,848,461; taxable partial refunding of 1998 Series B bonds
- **2008 Series H:** \$5,000,000; capital improvements
- **2008:** \$3,728,462; conversion of 2007 Series I bonds from taxable to tax-exempt bonds
- **2022 Series B:** \$22,000,000; debt restructuring

SETON HALL UNIVERSITY

- **1976 Series A:** \$4,550,000; Law Center
- **1985 Series, Project A:** \$31,985,000; dormitory and recreation center
- **1988 Series, Project B:** \$23,000,000; dormitory
- **1989 Series, Project C:** \$53,535,000; Law School and parking garage
- **1991 Refunding Series A:** \$33,965,000; refunding of 1985 Series, Project A bonds
- **1991 Refunding Series B:** \$21,785,000; refunding of 1988 Series, Project B bonds
- **1991 Series, Project D:** \$28,970,000; library
- **1996 Series, Project E:** \$20,800,000; refunding of 1989 Series, Project C bonds
- **1998 Series, Project F:** \$7,620,000; refunding of 1991 Series, Project D bonds
- **1999 Refunding Bonds:** \$50,450,000; refunding of 1989 Series, Project C and 1991 Series, Project D bonds
- **2001 Refunding Series A:** \$22,840,000; refunding of 1991 Series A bonds
- **2001 Refunding Series B:** \$11,600,000; refunding of 1991 Refunding Series B bonds
- **2001 Series, Project G:** \$8,740,000; parking facility, additions, dormitory fire suppression project
- **2005 Series C:** \$57,750,000; McNulty Hall renovations for new Science and Technology Center, property acquisition for student housing, electrical substation, baseball/soccer field improvements
- **2006 Series A:** \$20,750,000; refunding of 1996 Series, Project E bonds

- **2008 Series D:** \$49,760,000; partial refunding of 2005 Series C bonds and refunding of 2006 Series A bonds
- **2008 Series E:** \$24,340,000; refunding of 2005 Series C bonds
- **2009 Tax-Exempt Lease:** \$3,371,289; acquisition of laptops
- **2009 Series C:** \$7,955,000; refunding of 1998 Series, Project F bonds
- **2011 Series A:** \$35,470,000; refunding of 1999 Refunding Bonds, 2001 Refunding Series A, 2001 Refunding Series B and 2001 Series, Project G bonds
- **2013 Series D:** \$41,910,000; expanding of Aquinas Hall and existing parking garage, capital improvements and renovations to buildings and facilities, and land acquisition
- **2015 Series C:** \$22,205,000; refunding of 2008 Series E bonds
- **2016 Series C:** \$36,265,000; constructing and equipping the University's Welcome Center and renovations to the University Center
- **2017 Series D:** \$39,520,000; refunding of 2008 Series D bonds
- **2017 Series E:** \$31,915,000; renovation and equipping of 412,000 sq. ft. building and 65,000 sq. ft. building to be used for medical and non-medical education, research and clinical administration, and offices
- **2020 Series C:** \$33,205,000; construction and equipping of the University Center, Boland Hall, and dormitory campus landscaping and hardscaping improvements
- **2020 Series D:** \$79,015,000; demolition of certain buildings, construction and equipping of a multi-story student housing facility, and renovation, construction and equipping of athletic facilities
- **2021 Series D:** \$11,990,000; refunding of a portion of the 2013 Series D Bonds

STEVENS INSTITUTE OF TECHNOLOGY

- **1983 Series A (Collateralized):** \$5,350,000; dormitory
- **1992 Series A:** \$18,995,000; athletic/recreation center, refunding of 1983 Series A bonds
- **1998 Series I:** \$17,000,000; renovations and maintenance, refunding of a portion of 1992 Series A bonds
- **2002 Series C:** \$59,585,000; Center for Technology Management, improvements to athletic fields
- **2004 Series B:** \$13,265,000; conversion of 6 brownstones to student residence halls
- **2007 Series A:** \$71,060,000; refunding of 2002 Series C and 2004 Series B bonds and partial refunding of 1998 Series I bonds
- **2017 Series A:** \$119,905,000; refunding of 1998 Series I and 2007 Series A bonds and construction, renovation and equipping of the Gianforte Academic Center, the Babbio Garage and other educational and research University facilities
- **2020 Series A:** \$174,315,000; Student Housing Towers and University Center
- **2020 Series B:** \$26,485,000; capital improvements to University facilities

STOCKTON UNIVERSITY

- **Series 1973 C:** \$1,780,000; College Center
- **Series 1973 D:** \$5,700,000; student apartments
- **Series 1980 B:** \$9,790,000; dormitories
- **Series 1981 D:** \$3,860,000; College Center Annex
- **Series 1985 A:** \$10,980,000; refunding of Series 1980 B bonds
- **Series 1985 C:** \$4,370,000; refunding of Series 1981 D bonds
- **Series 1985 F:** \$7,810,000; dormitories and parking expansion
- **Series 1987 B:** \$1,000,000; convenience center
- **Series 1988 A:** \$3,294,000; student housing renovations
- **Series 1992 B:** \$10,600,000; refunding of Series 1985 A bonds
- **Series 1992 C:** \$7,330,000; refunding of Series 1985 F bonds

- **Series 1993 F:** \$6,690,000; library addition and arts and sciences building
- **Series 1996 B:** \$1,680,000; refunding of Series 1985 C bonds
- **Series 1996 F:** \$19,280,000; recreation center
- **Series 1998 C:** \$13,110,000; student housing facility and commons building
- **Series 2002 B:** \$8,340,000; refunding of Series 1992 B and Series 1992 C bonds
- **Series 2005 C:** \$31,150,000; F-Wing and J-Wing academic building renovations, student housing renovations, office building acquisition and renovation, electrical power improvements, and refunding of Series 1993 F bonds
- **Series 2005 F:** \$28,180,000; refunding of Series 1996 F and Series 1998 C bonds
- **Series 2006 F:** \$50,365,000; student housing, parking, energy conservation projects, land acquisition, Holocaust Resource Center and Alton Auditorium renovations, and electrical upgrades

- **Series 2007 G:** \$40,250,000; student housing, various safety and infrastructure improvements
- **Series 2008 A:** \$136,910,000; Campus Center, College Walk renovations, site and roadway improvements, and refunding of Series 2005 C bonds
- **Series 2015 E:** \$18,830,826; refunding of Series 2005 F bonds
- **Series 2016 A:** \$202,445,000; refunding of Series 2006 F, Series 2007 G and Series 2008 A bonds and capital improvements to University facilities
- **Series 2020 A:** \$5,935,000; acquisition of a currently leased residence facility

THE COLLEGE OF NEW JERSEY

- **Series 1972 A:** \$9,270,000; dormitory and dining hall
- **Series 1976 D:** \$5,580,000 and **Series 1976 E:** \$1,086,000; student center
- **Series 1979 B:** \$2,300,000; athletic and recreation center
- **Series 1983 E:** \$2,810,000; sports fields
- **Series 1983 F:** \$9,000,000; dormitory
- **Series 1984 B:** \$9,110,000; gymnasium renovations



- **Series 1986 D:** \$10,050,000; refunding of Series 1983 F bonds
- **Series 1986 G:** \$10,400,000; refunding of Series 1984 B bonds
- **Series 1989 C:** \$34,680,000; student residence
- **Series 1992 A:** \$9,955,000; cogeneration plant
- **Series 1992 E:** \$56,160,000; refunding of Series 1986 D, Series 1986 G, and Series 1989 C bonds
- **Series 1994 B:** \$24,890,000; dormitories and parking garage
- **Series 1996 A:** \$75,185,000; academic building, nursing building, student residence, renovations
- **Series 1999 A:** \$146,455,000; School of Business, Social Sciences Building, dormitory additions, refunding of Series 1994 B and Series 1996 A bonds
- **Series 2002 C:** \$53,155,000; refunding of Series 1992 A and Series 1992 E bonds
- **Series 2002 D:** \$138,550,000; library, parking garages/decks, apartments, various renovations and additions
- **Series 2008 D:** \$287,790,000; debt restructuring

HISTORICAL FINANCINGS (CONT.)

- **Series 2010 A (Tax-Exempt) and Series 2010 B (BABs):** \$44,500,000; academic building
- **Series 2012 A:** \$26,255,000; refunding of Series 2002 C bonds
- **Series 2013 A:** \$24,950,000; new STEM building, renovating and equipping existing academic buildings
- **Series 2015 G:** \$114,525,000; partial refunding of Series 2008 D bonds
- **Series 2016 F & G:** \$193,180,000; partial refunding of Series 2008 E bonds
- **Series 2020 D:** \$182,185,000; refunding of Series 2013 A, Series 2015 G, Series 2016 F, and Series 2016 G bonds

THOMAS EDISON STATE UNIVERSITY

- **Direct Loan Program (1998):** \$1,300,000; equipment purchase
- **2005 Tax-Exempt Lease:** \$1,800,000; acquisition of various equipment, furniture and technology infrastructure
- **2007 Tax-Exempt Lease:** \$2,700,000; renovations and equipment acquisition
- **2010 Tax-Exempt Lease:** \$700,000; equipment acquisition and installation
- **2011 Tax-Exempt Lease:** \$948,000; replacement of shelving in State Library
- **Series 2011 D:** \$8,000,000; renovations to Kuser Mansion
- **Series 2014 B:** \$7,000,000; construct 35,000 sq ft nursing education center and associated parking

UNION COLLEGE OF UNION COUNTY

- **1973 Series A:** \$3,635,000; library/classroom building
- **Series 1989 B:** \$6,660,000; commons building
- **Series 1991 C:** \$3,945,000; computer laboratories



UNIVERSITY OF MEDICINE AND DENTISTRY OF NEW JERSEY

- **Series 1995 B:** \$143,645,000; academic building
- **Series 1999 C:** \$15,720,000; building acquisition
- **Series 2009 B:** \$258,075,000; refunding of Series 1995 B and Series 1999 C and other outstanding debt

THE WILLIAM PATERSON UNIVERSITY OF NEW JERSEY

- **Series 1974 C:** \$4,025,000; student apartments
- **Series 1976 A:** \$5,685,000; student center
- **Series 1981 A:** \$12,405,000 and **Series 1981 B:** \$5,000,000; student residence
- **Series 1982 E:** \$2,200,000; Student Center Annex
- **Series 1985 B:** \$13,700,000; refunding of Series 1981 A bonds
- **Series 1991 F:** \$21,605,000; dormitory; refunding of Series 1985 B bonds
- **Series 1998 D:** \$6,575,000; partial refunding of Series 1991 F bonds
- **Series 1999 D:** \$12,785,000; dormitory
- **Series 2000 A:** \$26,425,000; land acquisition and academic building conversion

- **Series 2002 E:** \$42,125,000; refunding of Series 1991 F bonds, student center renovations and addition
- **Series 2004 A:** \$30,035,000; two dormitories and roadway construction and improvements
- **Series 2005 E:** \$42,295,000; partial refunding of Series 1999 D, Series 2000 A and Series 2002 E bonds
- **Series 2008 C:** \$88,670,000; addition to Science Hall, refunding of Series 1998 D bonds
- **Series 2012 C and Series 2012 D:** \$51,105,000; construction of a parking garage and related site renovations and refunding of Series 2002 E and a partial refunding of Series 2004 A bonds
- **Series 2015 C:** \$45,695,000; refunding of Series 2005 E bonds and renovation, acquisition, installation and construction of Hunziker Hall and Hunziker Wing Buildings
- **Series 2016 E:** \$60,755,000; refunding of Series 2008 C bonds
- **Series 2017 B:** \$27,065,000; new residence hall
- **Series 2019 A:** \$5,070,000; partial refunding of Series 2008 C bonds
- **Series 2021 C:** \$17,900,000; various capital improvements to campus facilities

SUMMARY OF STATE-BACKED TRANSACTIONS:

HIGHER EDUCATION EQUIPMENT LEASING FUND

- **Higher Education Equipment Leasing Fund, Series 1994 A:** \$100,000,000
- **Higher Education Equipment Leasing Fund, Series 2001 A:** \$87,385,000
- **Higher Education Equipment Leasing Fund, Series 2003 A:** \$12,620,000
- **Higher Education Equipment Leasing Fund, Series 2014 A:** \$82,235,000
- **Higher Education Equipment Leasing Fund, Series 2014 B:** \$7,105,000
- **Higher Education Equipment Leasing Fund, Series 2023 A:** \$77,425,000

HIGHER EDUCATION FACILITIES TRUST FUND

- **Higher Education Facilities Trust Fund, Series 1995 A:** \$220,000,000
- **Higher Education Facilities Trust Fund, Series 2005 A:** \$90,980,000; refunding of Series 1995 A bonds
- **Higher Education Facilities Trust Fund, Series 2014:** \$199,855,000

HIGHER EDUCATION TECHNOLOGY INFRASTRUCTURE FUND

- **Higher Education Technology Infrastructure Fund, Series 1998 A:** \$55,000,000
- **Higher Education Technology Infrastructure Fund, Series 2014:** \$38,110,000

COUNTY COLLEGE CAPITAL PROJECTS FUND

- **County College Capital Projects Fund, Series 1999 A:** \$19,295,000

HIGHER EDUCATION CAPITAL IMPROVEMENT FUND

- **Higher Education Capital Improvement Fund, Series 2000 A:** \$132,800,000
- **Higher Education Capital Improvement Fund, Series 2000 B:** \$145,295,000
- **Higher Education Capital Improvement Fund, Series 2002 A:** \$194,590,000

- **Higher Education Capital Improvement Fund, Series 2004 A:** \$76,725,000
- **Higher Education Capital Improvement Fund, Series 2005 A:** \$169,790,000; partial refunding of Series 2000 A, Series 2000 B and Series 2002 A bonds
- **Higher Education Capital Improvement Fund, Series 2006 A:** \$155,460,000; partial refunding of Series 2000 A, Series 2000 B, Series 2002 A and Series 2004 A bonds
- **Higher Education Capital Improvement Fund, Series 2014 A:** \$164,245,000
- **Higher Education Capital Improvement Fund, Series 2014 B:** \$14,345,000
- **Higher Education Capital Improvement Fund, Series 2014 C:** \$21,230,000; partial refunding of Series 2004 A bonds
- **Higher Education Capital Improvement Fund, Series 2014 D:** \$3,490,000; partial refunding of Series 2004 A bonds
- **Higher Education Capital Improvement Fund, Series 2016 A:** \$252,270,000; refunding of Series 2005 A bonds and partial refunding of Series 2006 A bonds
- **Higher Education Capital Improvement Fund, Series 2016 B:** \$142,715,000
- **Higher Education Capital Improvement Fund, Series 2023 A:** \$183,835,000

DORMITORY SAFETY TRUST FUND

- **Dormitory Safety Trust Fund, Series 2001 A:** \$67,970,000
- **Dormitory Safety Trust Fund, Series 2001 B:** \$5,800,000 (federally taxable)
- **Dormitory Safety Trust Fund, Series 2003 A:** \$5,440,000

PUBLIC LIBRARY GRANT PROGRAM

- **Public Library Grant Program, Series 2002 A:** \$45,000,000

OTHER

- **Floating Rate Weekly Demand Equipment & Capital Improvement Revenue Bonds, 1985 Series A:** \$50,000,000

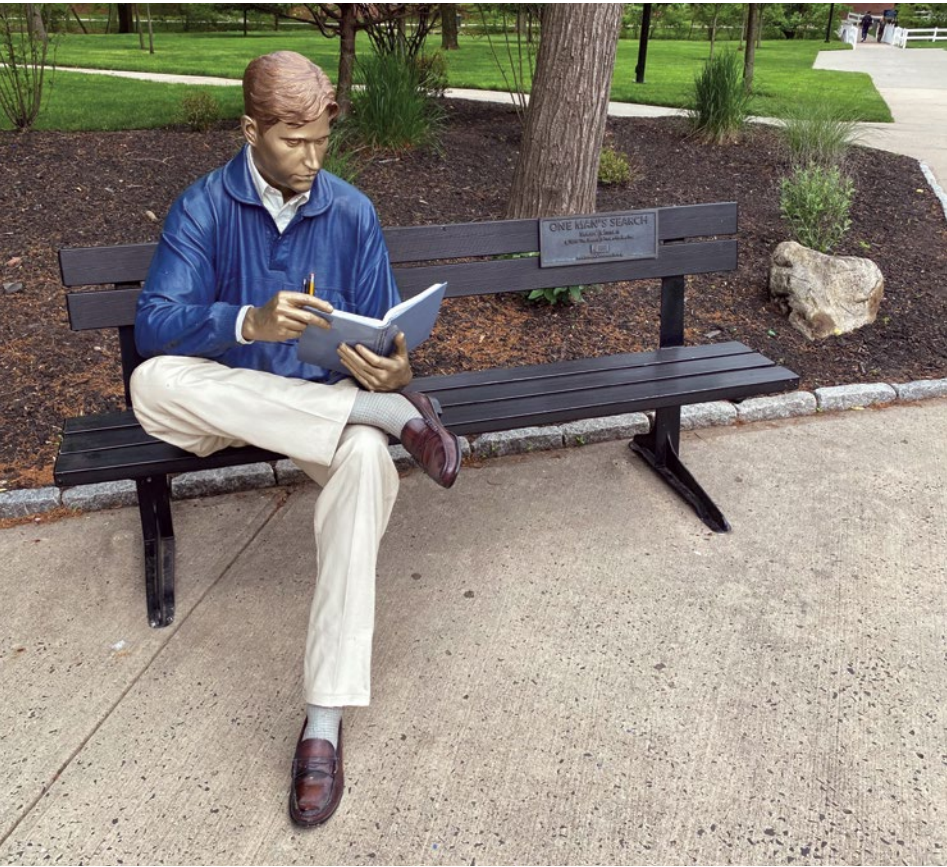


PHOTO CAPTIONS

INSIDE FRONT COVER
Princeton University

PAGE 4
Princeton University

PAGE 9
Stevens Institute of Technology

PAGE 12
Left: Stockton University
Right: Caldwell University

PAGE 13 (LEFT TO RIGHT)
Caldwell University, Montclair State University,
Princeton University

PAGE 14 (COUNTER CLOCKWISE)
Princeton University, Rider University,
Rider University, Ramapo College of New Jersey

PAGE 15 (LEFT TO RIGHT)
Brookdale Community College, Georgian Court
University, Ramapo College of New Jersey

PAGE 16
Left: New Jersey Statehouse

PAGE 17
Top: Ramapo College of New Jersey
Bottom center: The College of New Jersey

PAGE 18
Stevens Institute of Technology

PAGE 19
Top: Montclair State University
Bottom: Rowan University

PAGE 20
Top: William Paterson University
Bottom: The College of New Jersey

PAGE 21
Top: Ramapo College of New Jersey
Bottom: Stockton University

PAGE 22
Top: Kean University
Bottom: Rutgers, The State University

PAGE 23
New Jersey Institute of Technology

PAGE 24
New Jersey Institute of Technology

PAGE 25
New Jersey Institute of Technology

PAGE 26
New Jersey Statehouse

PAGE 27
Raritan Valley Community College

PAGE 28
New Jersey Institute of Technology

PAGE 28
Kean University

PAGE 30
Montclair State University

PAGE 31
Stevens Institute of Technology

PAGE 32
Brookdale Community College

PAGE 33
Seton Hall University

PAGE 34
Stockton University

PAGE 35
Thomas Edison State University

PAGE 36
Stockton University

PAGE 37
Rider University

PAGE 38
Rutgers, The State University

PAGE 39
Montclair State University

PAGE 41
Kean University

PAGE 43
Top left: New Jersey Institute of Technology
Top right: The College of New Jersey



FINANCIAL STATEMENTS AND
SUPPLEMENTAL FINANCIAL INFORMATION


Demonstrating NJEFA's continued commitment to cost-efficient and environmentally-responsible business practices, NJEFA will provide its audited 2023 Financial Statements and Supplemental Information on NJEFA's website. Please note that at the time of printing, the audit process was incomplete. Once finalized, the audited Financial Statements and Supplemental Information will be made available on the Authority's website.

Click on the image at right or go to the NJEFA website: www.nj.gov/njefa/

This Annual Report and the Authority's Financial Statements are available on our website: www.nj.gov/njefa/

Click the book cover to see Financial Statements.





New Jersey Educational
Facilities Authority
103 College Road East
Princeton, NJ 08540

609.987.0880
www.nj.gov/njefa/

NJEFA

ANNUAL REPORT 2023