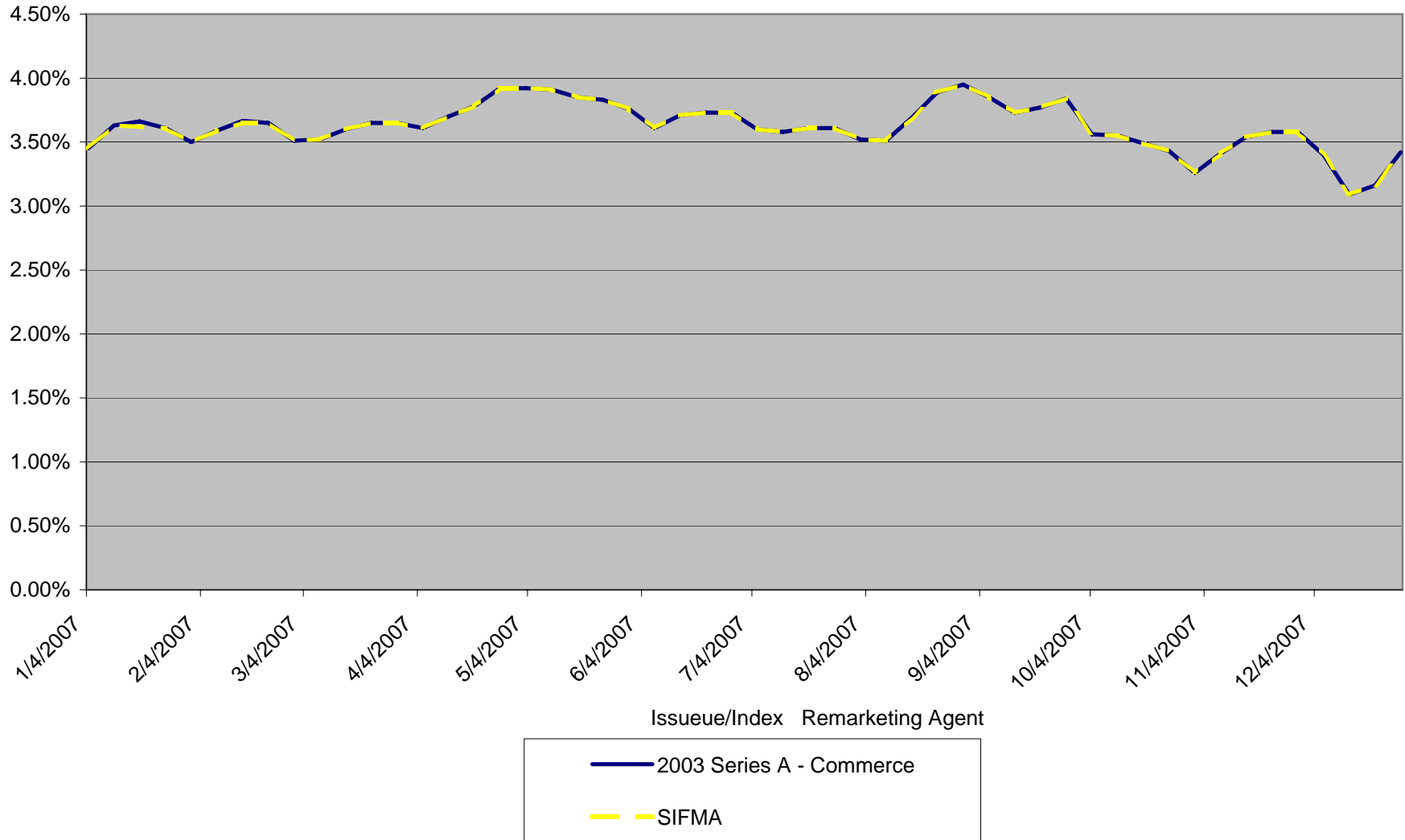




New Jersey Educational Facilities Authority Variable Rate Tracker

Centenary College 2003 Series A - Variable Rate Demand Obligations Commerce Bank Letter of Credit



*NJFEA makes every effort to ensure the accuracy of this report, but cannot guarantee that it is error free. Please contact JZoccali@njefa.com to report any inaccuracies.