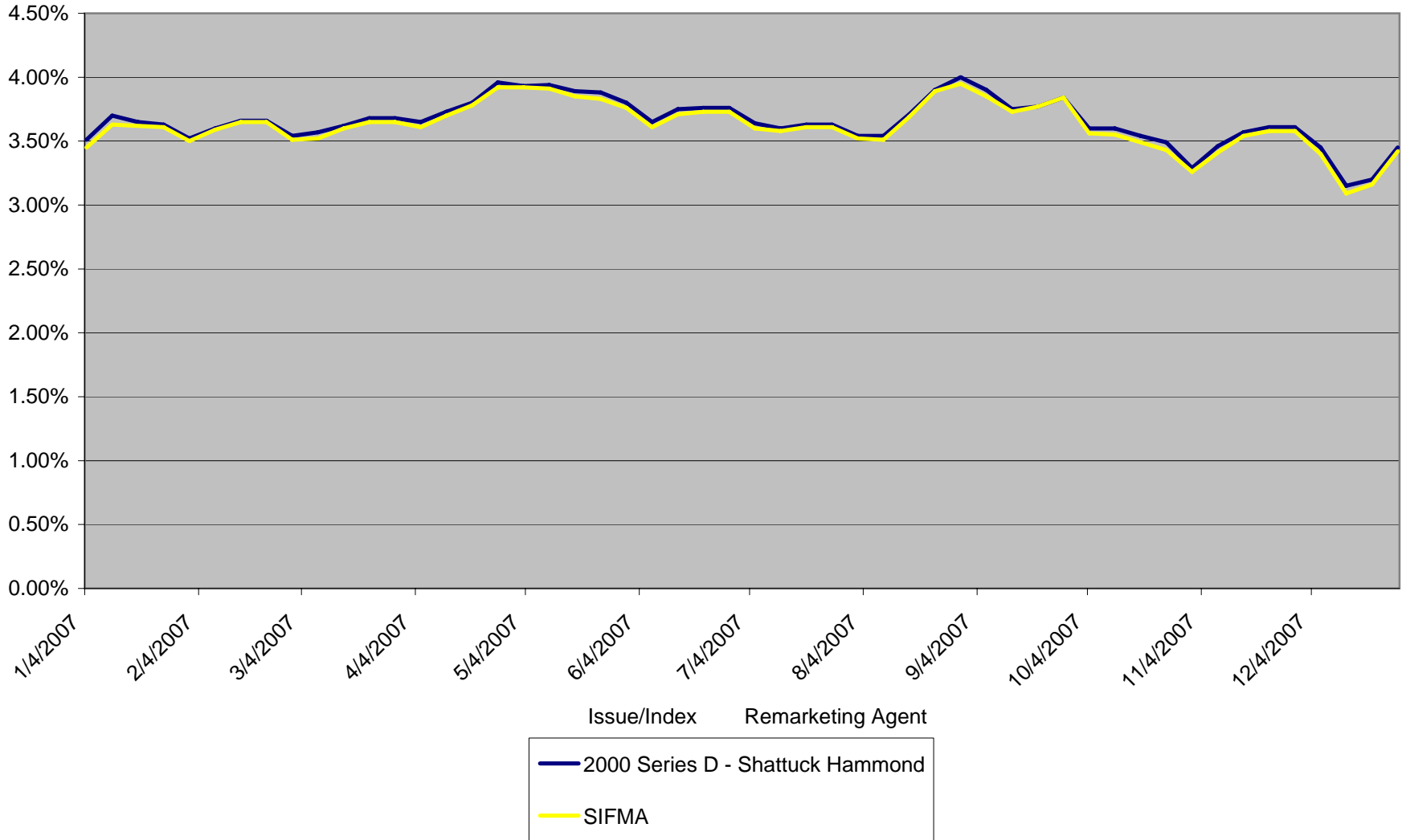




New Jersey Educational Facilities Authority Variable Rate Tracker

Institute for Defense Analyses 2000 Series D - Variable Rate Demand Obligations Ambac Insured with Wachovia Liquidity Facility



*NJEDA makes every effort to ensure the accuracy of this report, but cannot guarantee that it is error free. Please contact JZoccali@njefa.com to report any inaccuracies.