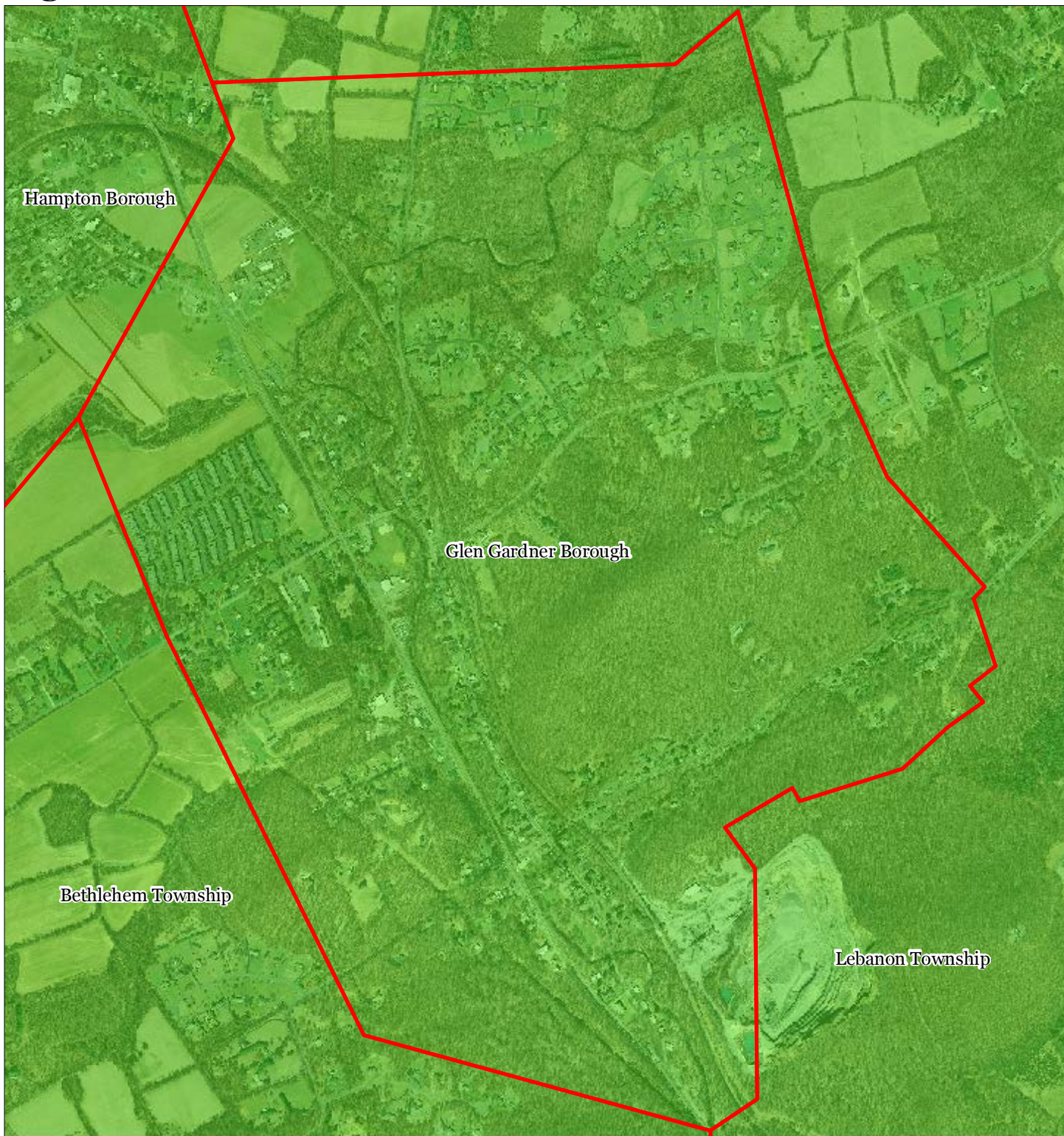


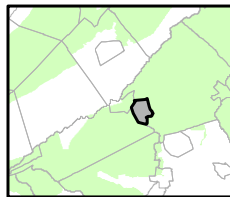
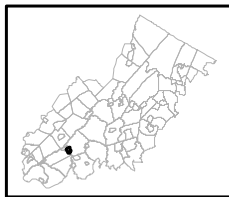


Figure 1: Preservation Area



-  Preservation Area
-  Municipal Boundaries

Glen Gardner Borough



1 inch = 0.205 miles



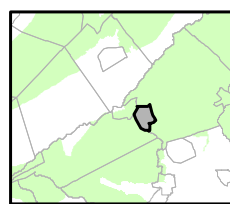
Figure 2: Land Use Capability Map Zones



Regional Master Plan Overlay Zone Designation

- | | |
|--|-----------------------------|
| Zone | Lakes Greater Than 10 acres |
| Protection | Preservation Area |
| Conservation | Municipal Boundaries |
| Existing Community | |
| Sub-Zone | |
| Existing Community Environmentally Constrained | |
| Conservation Environmentally Constrained | |
| Lake Community | |
| Wildlife Management | |

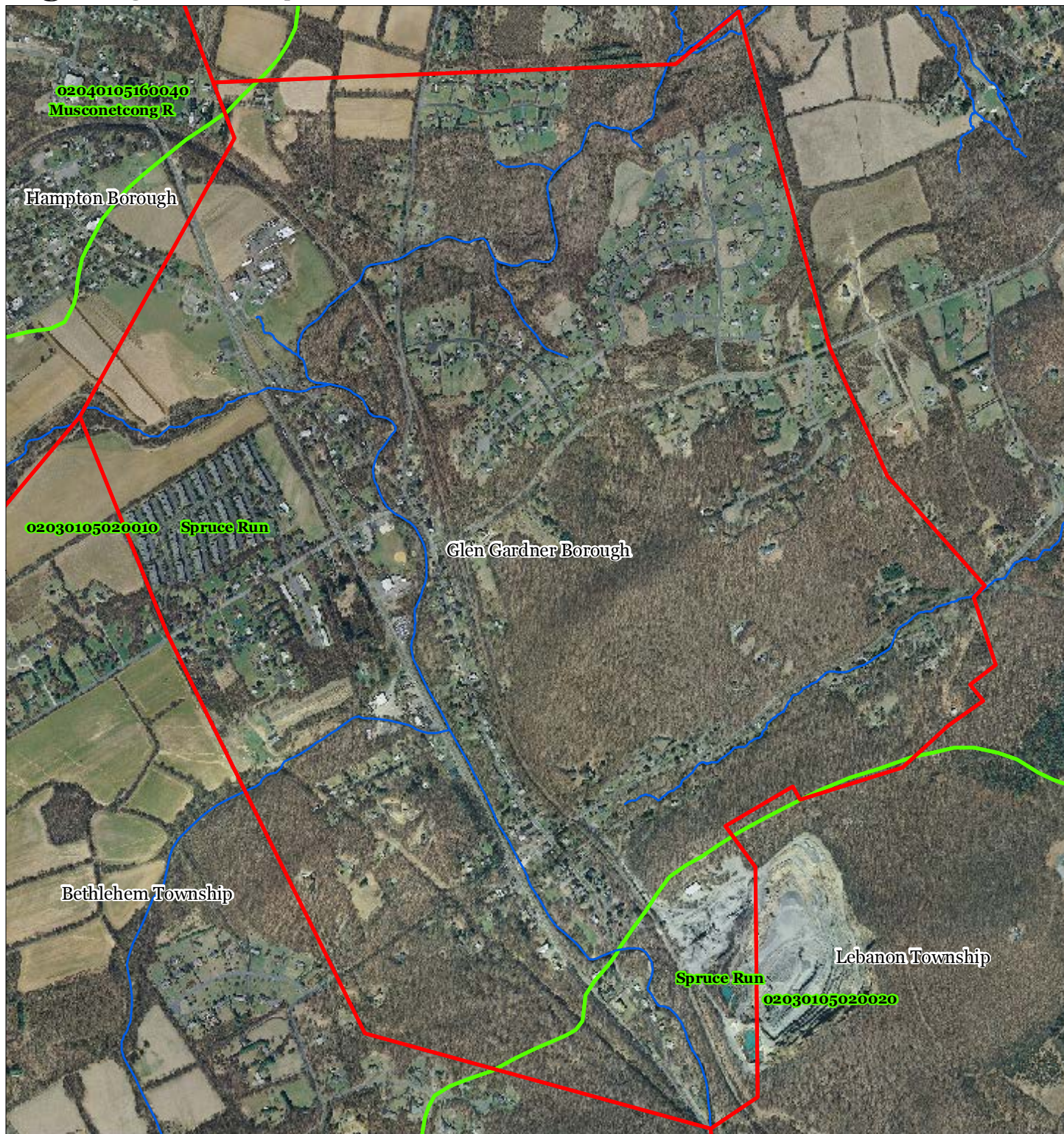
Glen Gardner Borough







1 inch = 0.205 miles

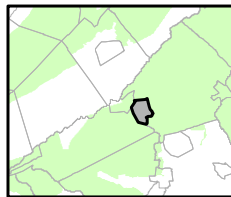
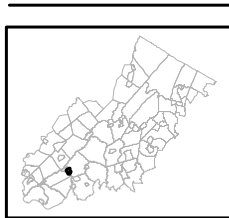


Figure 3: HUC 14 Boundaries



-  HUC 14 Subwatersheds
-  Stream Centerlines
-  Preservation Area
-  Municipal Boundaries

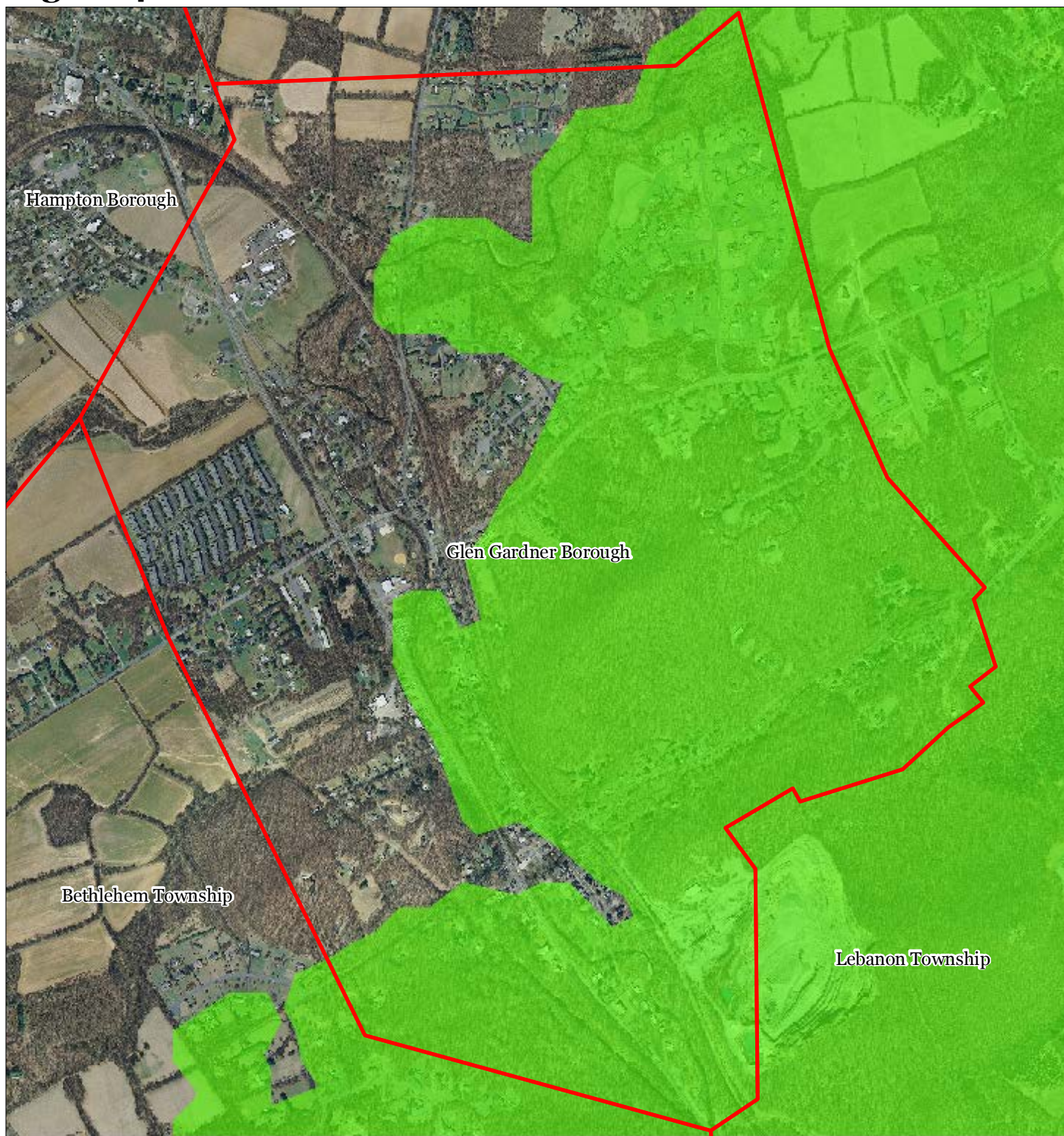
Glen Gardner Borough






1 inch = 0.205 miles

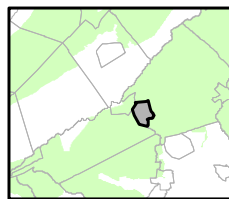
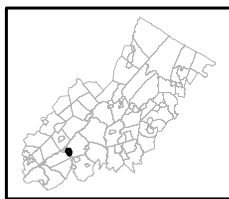


Figure 4: Forest Resource Area



-  Forest Resource Area
-  Preservation Area
-  Municipal Boundaries

Glen Gardner Borough






1 inch = 0.205 miles

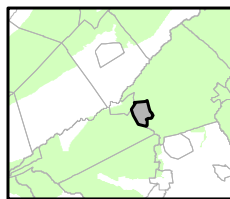


Figure 5: Total Forest Area



-  Forested Areas
-  Preservation Area
-  Municipal Boundaries

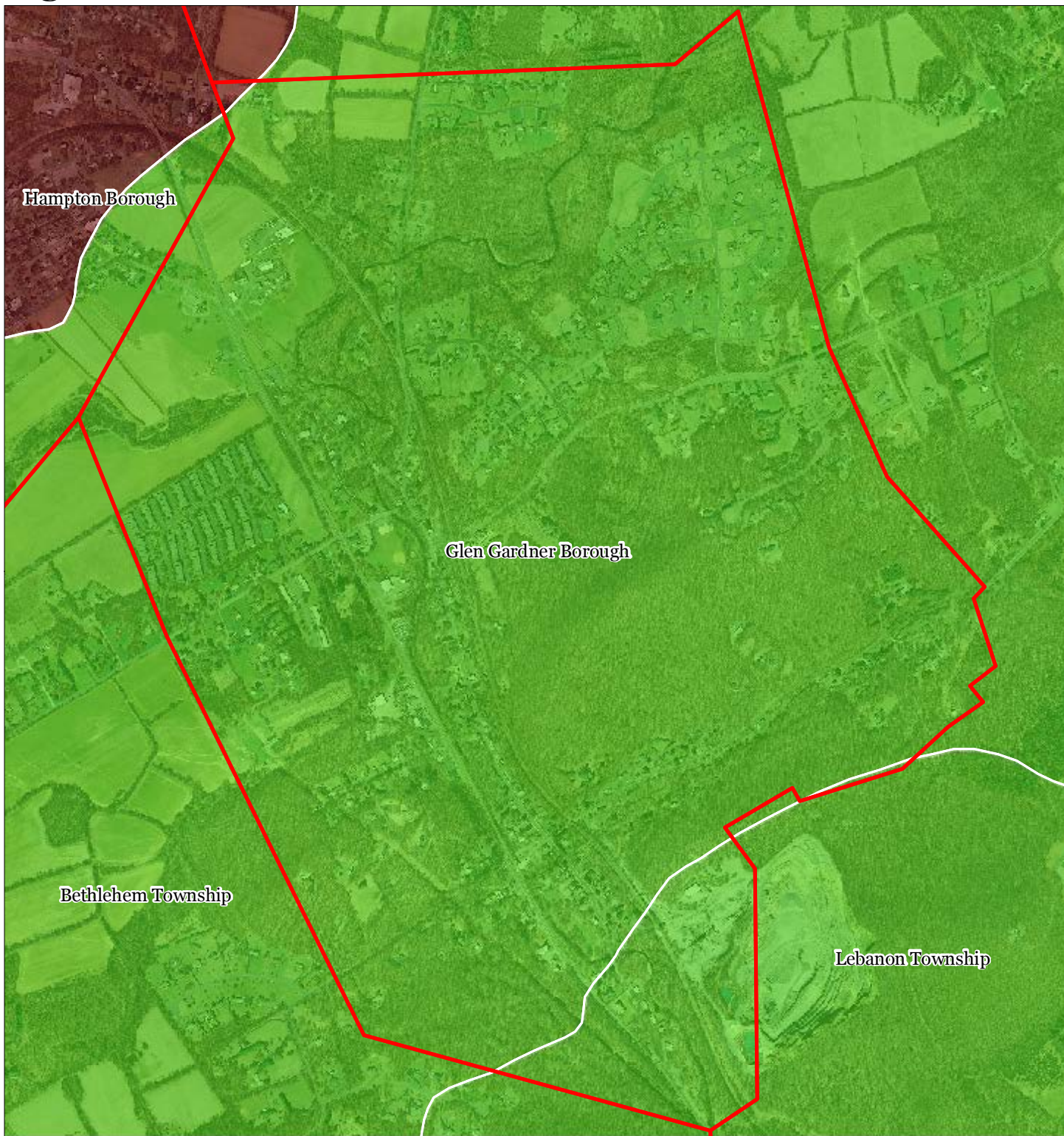
Glen Gardner Borough








1 inch = 0.205 miles



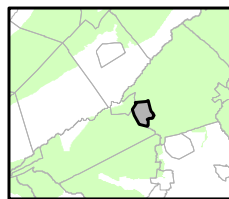
Figure 6: Forest Subwatersheds



Forest Integrity by HUC14 Subwatershed

-  *Low*
-  *Moderate*
-  *High*
-  Preservation Area
-  Municipal Boundaries

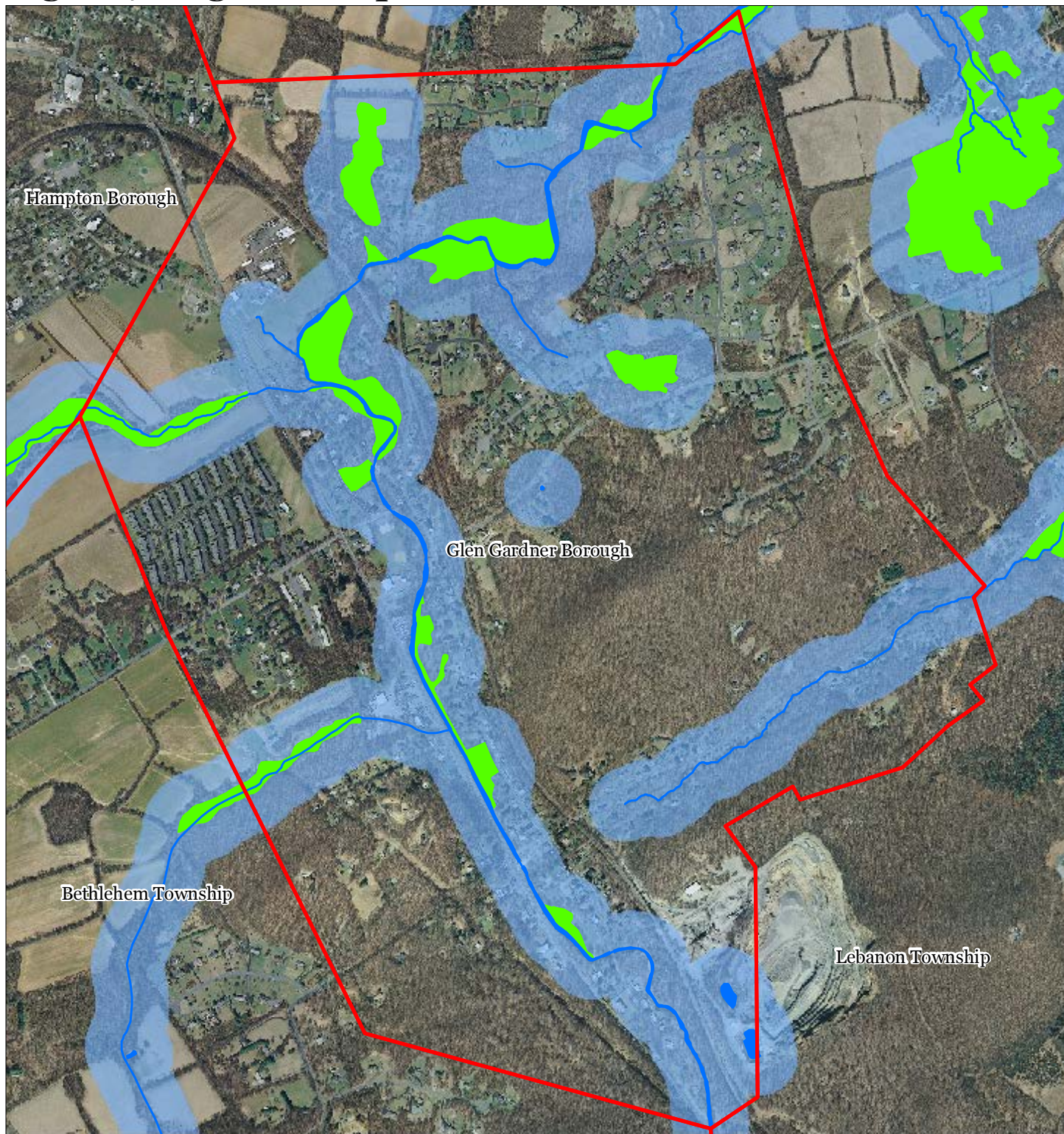
Glen Gardner Borough



1 inch = 0.205 miles

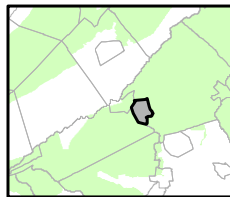
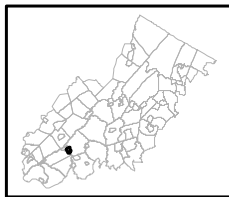


Figure 7: Highlands Open Waters



-  Highlands Open Water Buffers (300ft)
-  Streams
-  Wetlands
-  Lakes & Ponds
-  Preservation Area
-  Municipal Boundaries

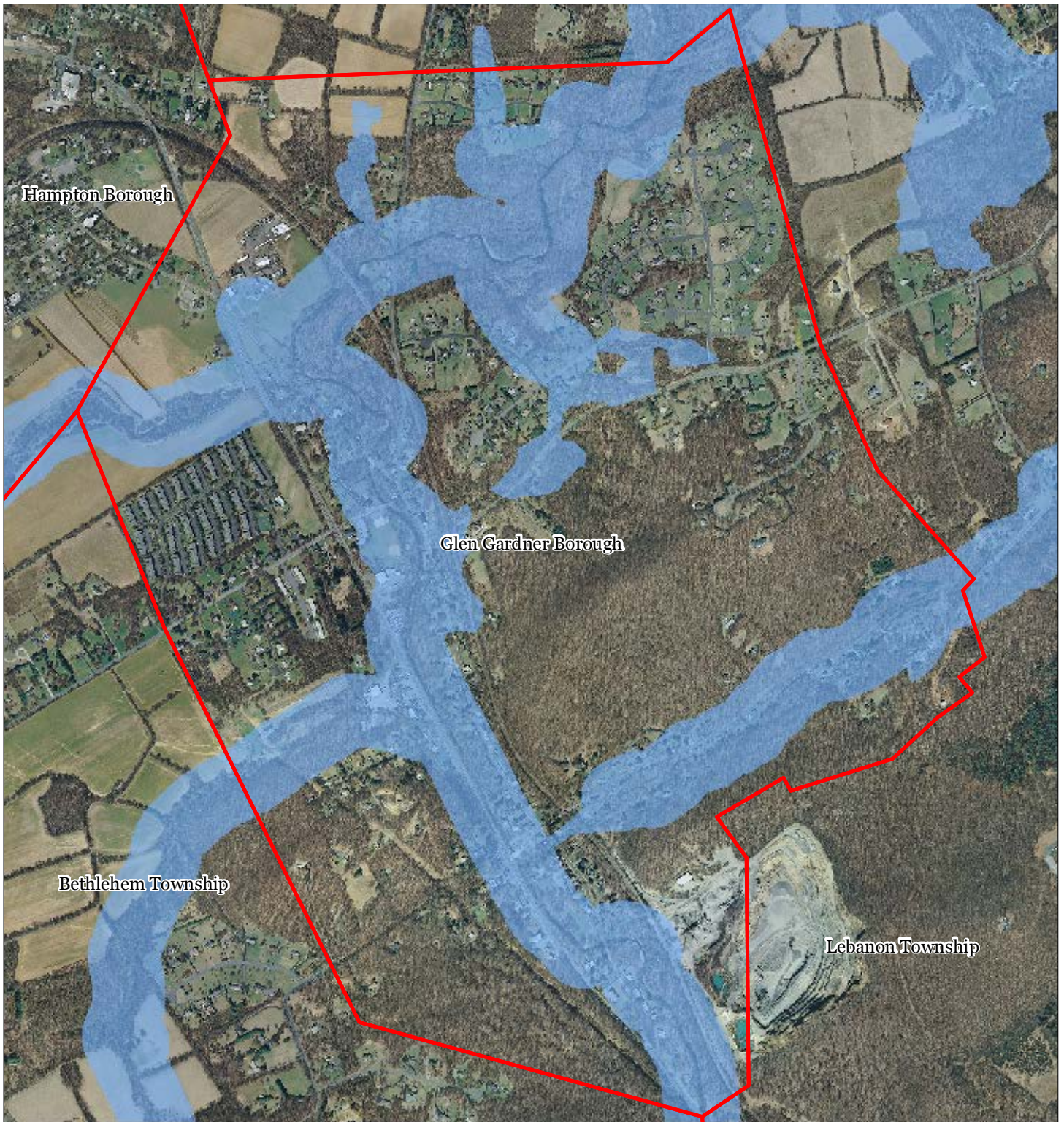
Glen Gardner Borough

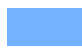




1 inch = 0.205 miles

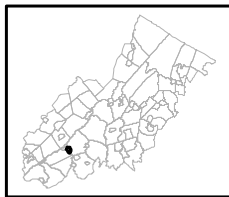


Figure 8: Highlands Riparian Area



-  Riparian Area
-  Preservation Area
-  Municipal Boundaries

Glen Gardner Borough



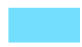




1 inch = 0.205 miles



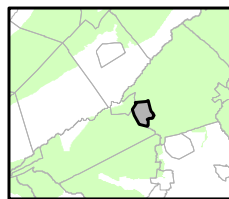
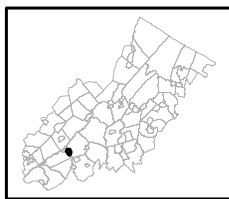
Figure 9: Watershed Values



Watershed Values by HUC14 Subwatershed

-  Low
-  Moderate
-  High
-  Preservation Area
-  Municipal Boundaries

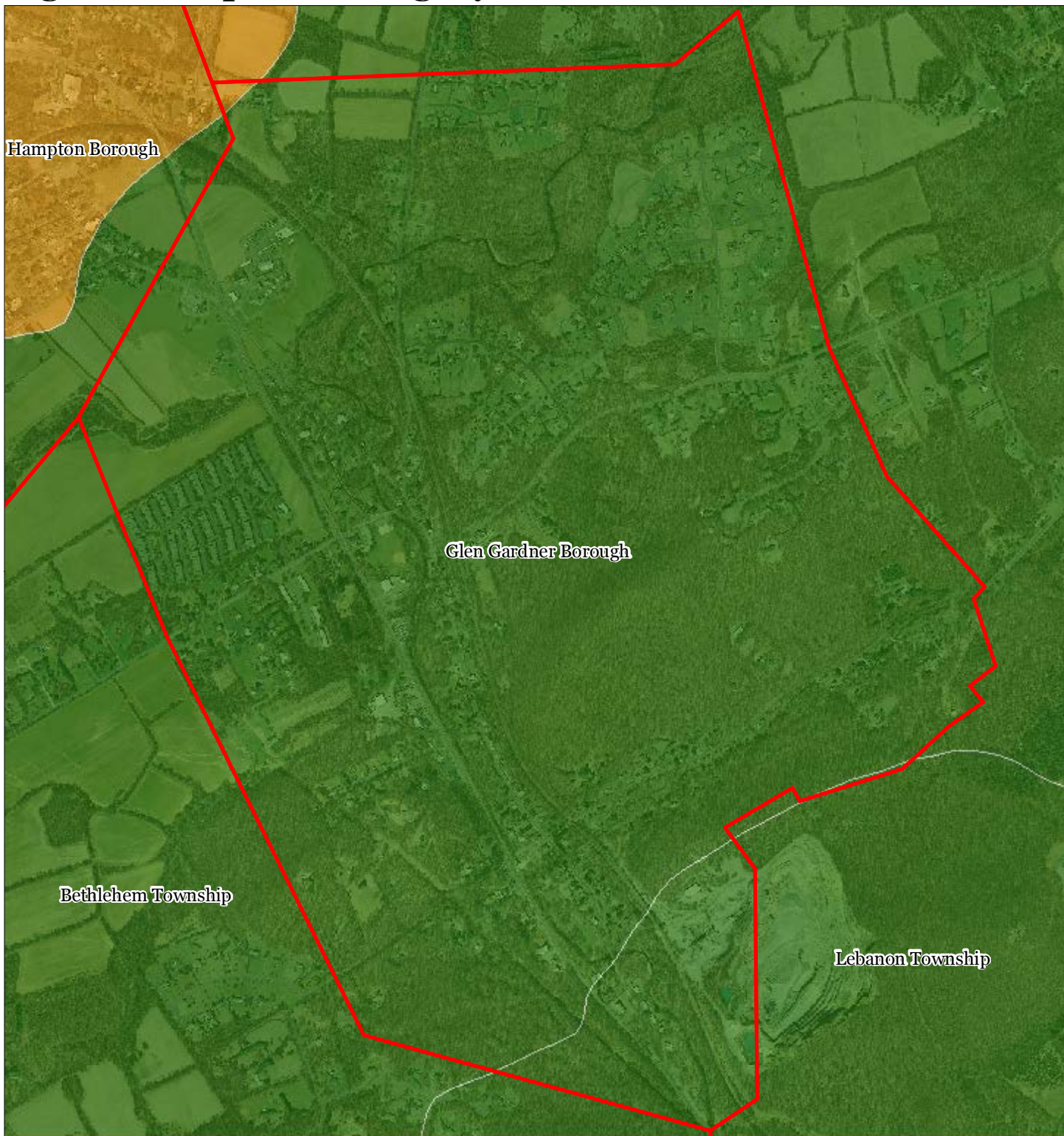
Glen Gardner Borough








1 inch = 0.205 miles



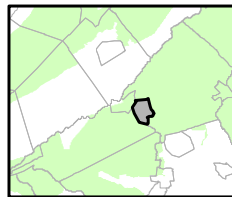
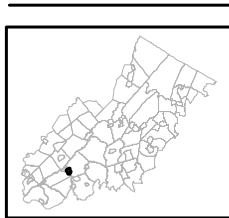
Figure 10: Riparian Integrity



Riparian Integrity by HUC14 Subwatershed

-  Low
-  Moderate
-  High
-  Preservation Area
-  Municipal Boundaries

Glen Gardner Borough

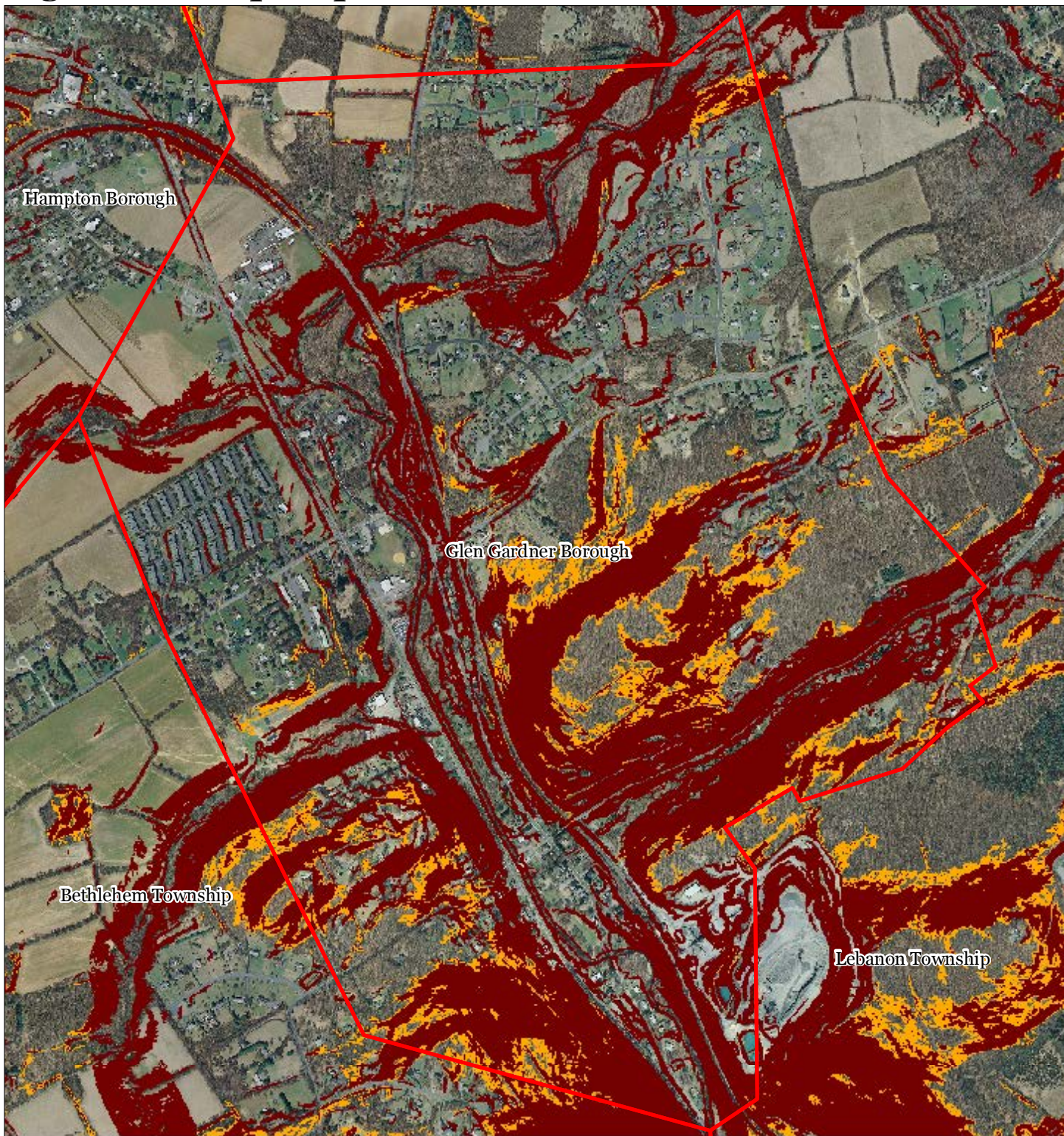


1 inch = 0.205 miles







October 2011

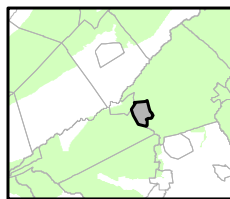
Figure 11: Steep Slope Protection Areas



Steep Slope

-  Moderate
-  Severe
-  Preservation Area
-  Municipal Boundaries

Glen Gardner Borough






1 inch = 0.205 miles

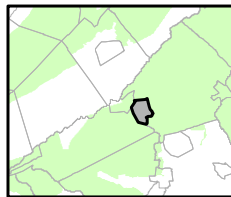
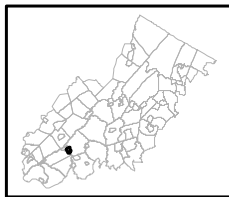


Figure 12: Critical Wildlife Habitat



-  Critical Wildlife Habitat
-  Preservation Area
-  Municipal Boundaries

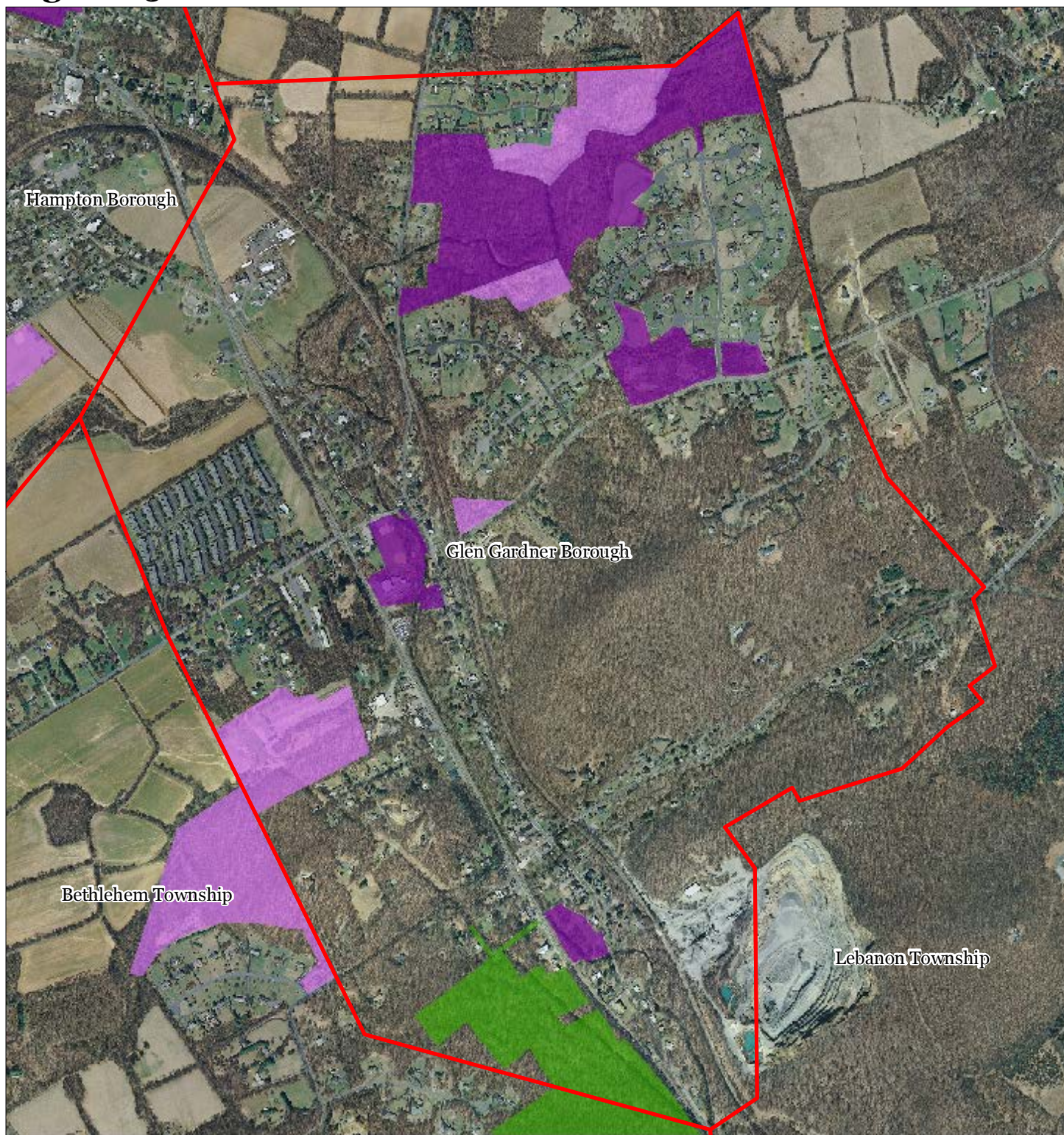
Glen Gardner Borough



1 inch = 0.205 miles

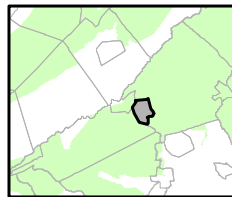
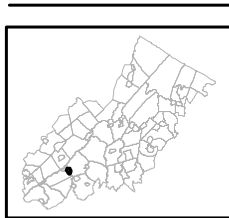


Figure 15: Preserved Lands



- | | |
|---|-------------------------------|
| Preserved Lands | Conservation Easements |
| Federal Open Space | Green Acres |
| State Open Space | SADC Easements |
| County Open Space | SADC Final |
| Municipal Open Space | SADC Preserved |
| Non-Profit/Private Open Space | Municipal Boundaries |
| Water Supply Watershed Lands | Preservation Area |
| Preserved Farmland | |
| Highlands Transfer of Development Lands | |

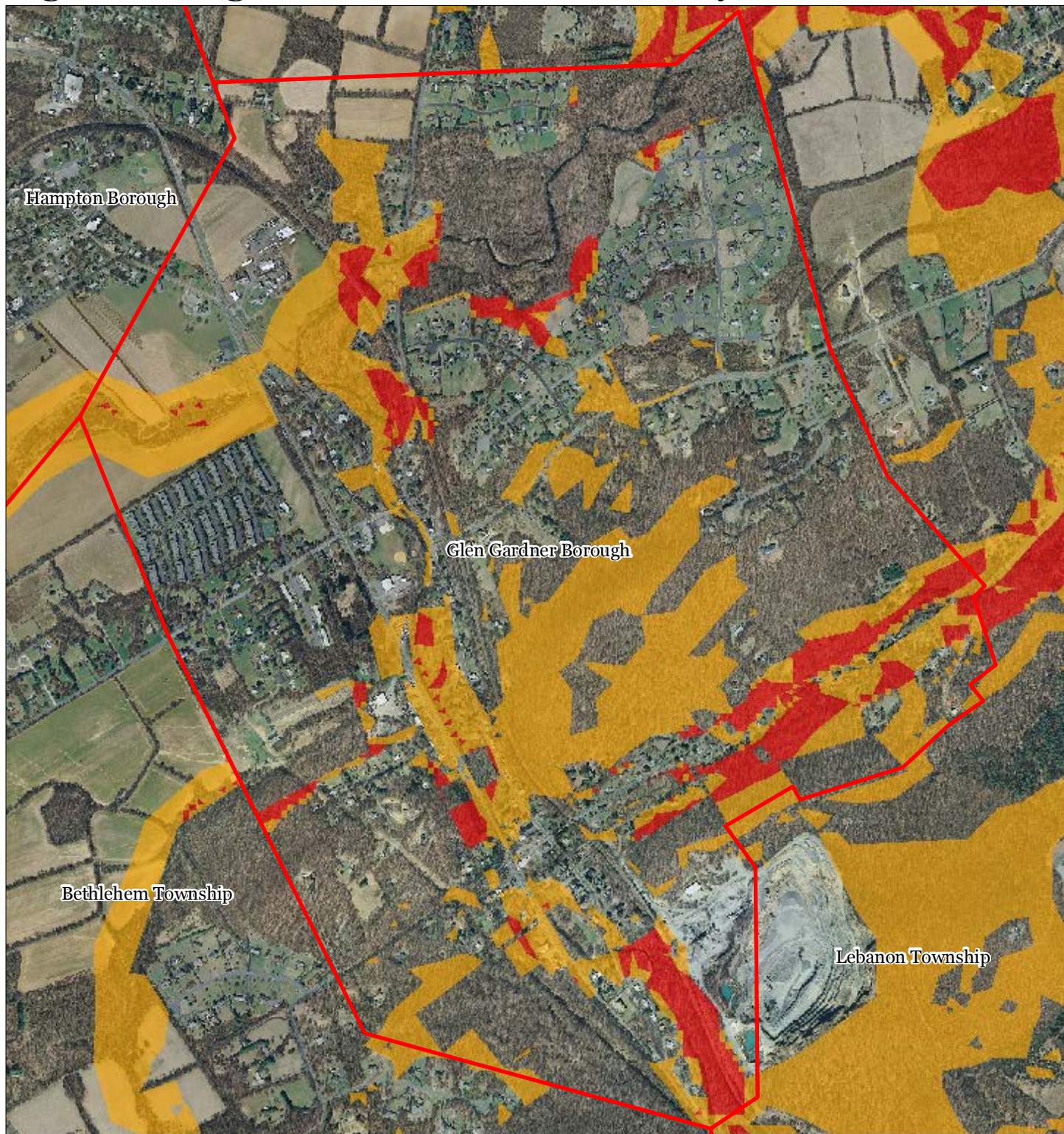
Glen Gardner Borough







1 inch = 0.205 miles



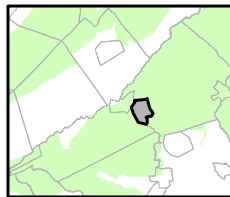
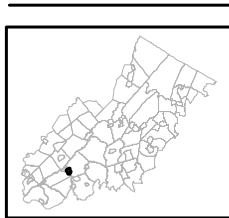
Figure 16: Highlands Conservation Priority Areas



Conservation Priority Areas

-  Moderate
-  High
-  Preservation Area
-  Municipal Boundaries

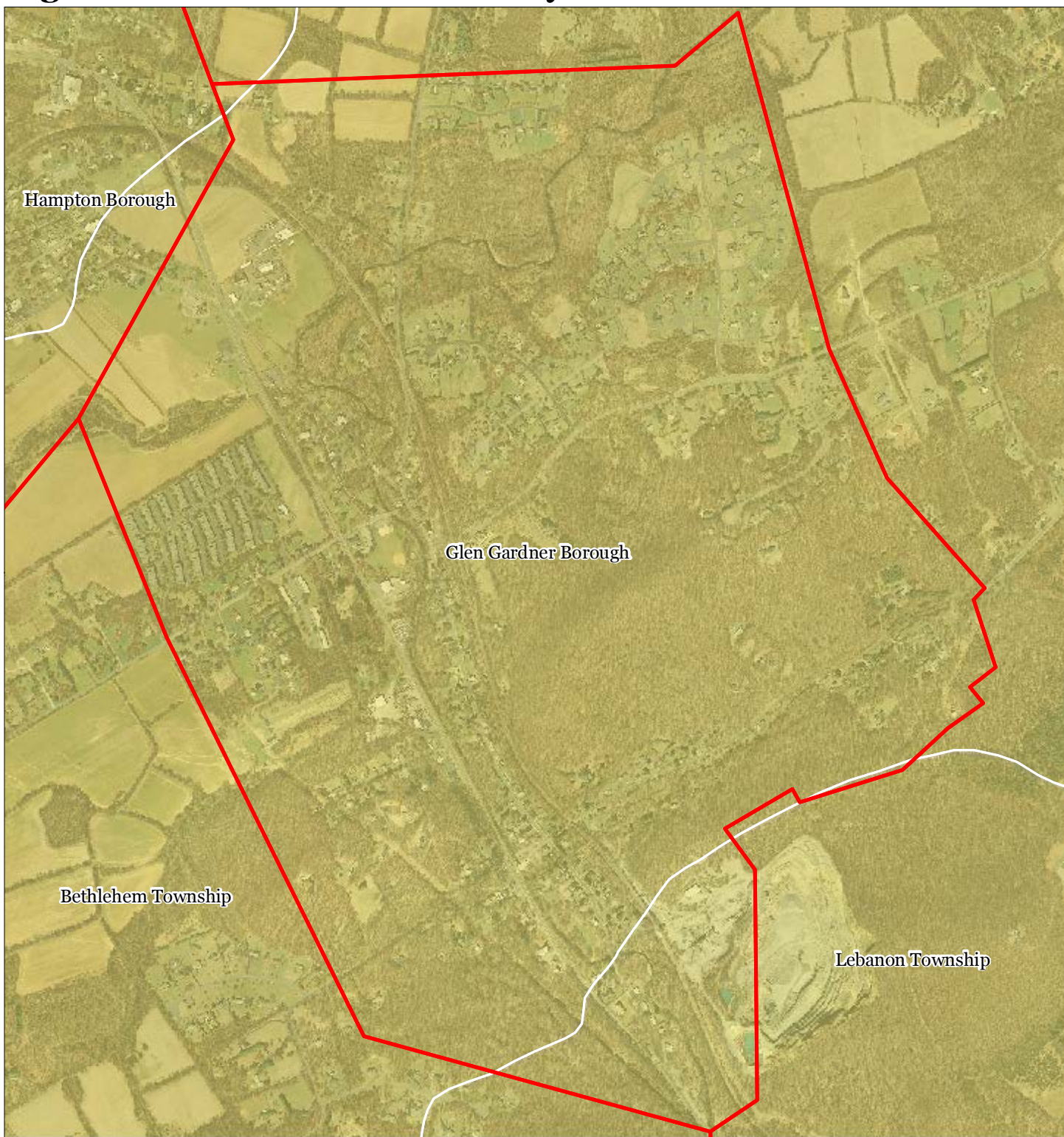
Glen Gardner Borough



1 inch = 0.205 miles

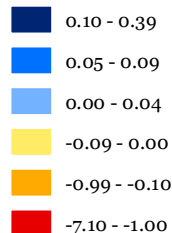




Figure 20: Net Water Availability



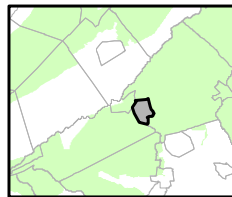
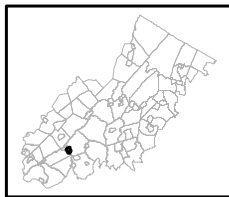
Net Water Availability By HUC14

Million Gallons Per Day (MGD)



-  Preservation Area
-  Municipal Boundaries

Glen Gardner Borough

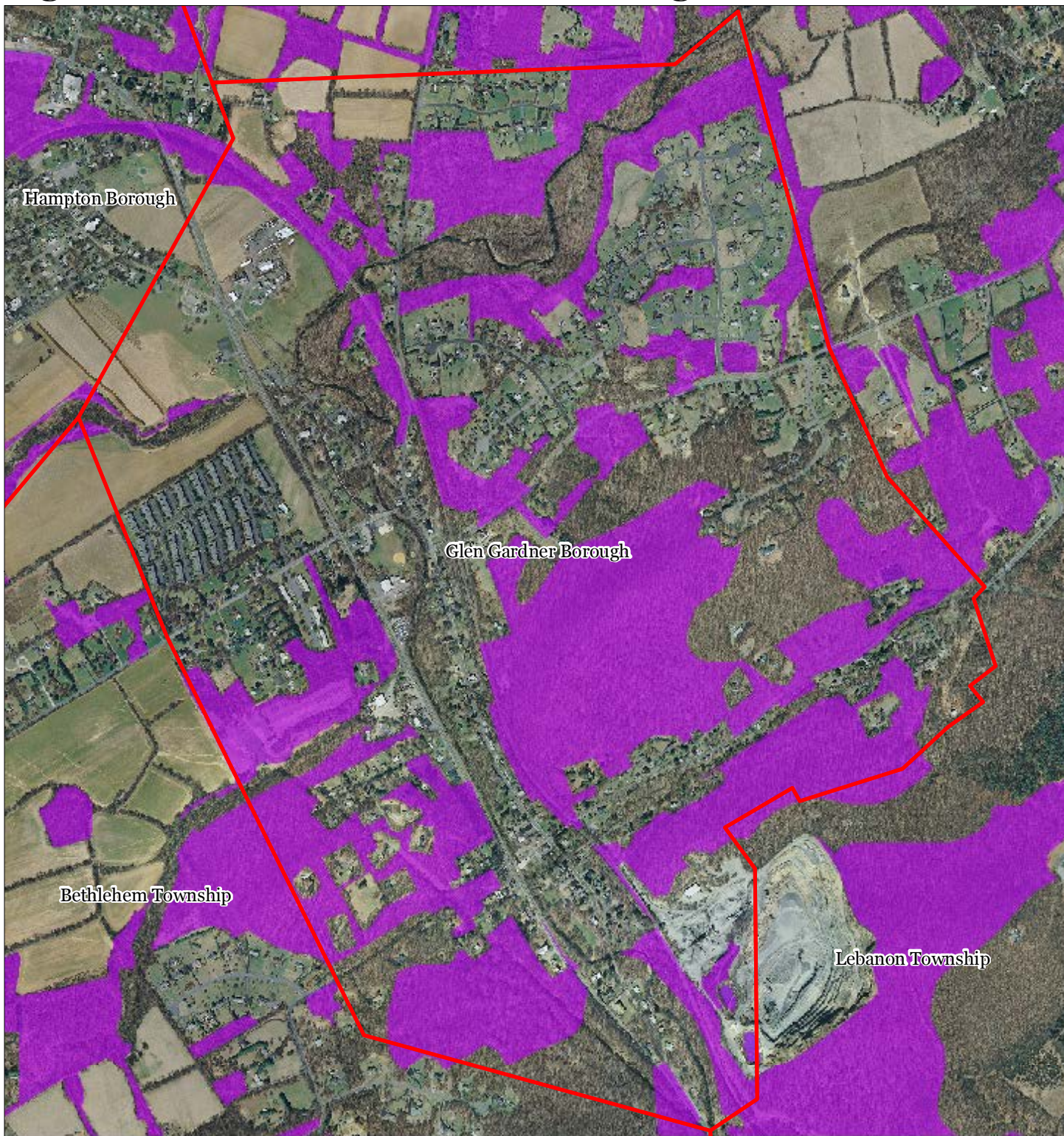





1 inch = 0.205 miles



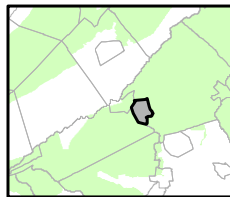
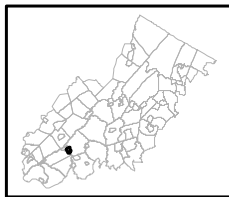
October 2011

Figure 21: Prime Ground Water Recharge Areas



-  Prime Groundwater Recharge Areas
-  Preservation Area
-  Municipal Boundaries

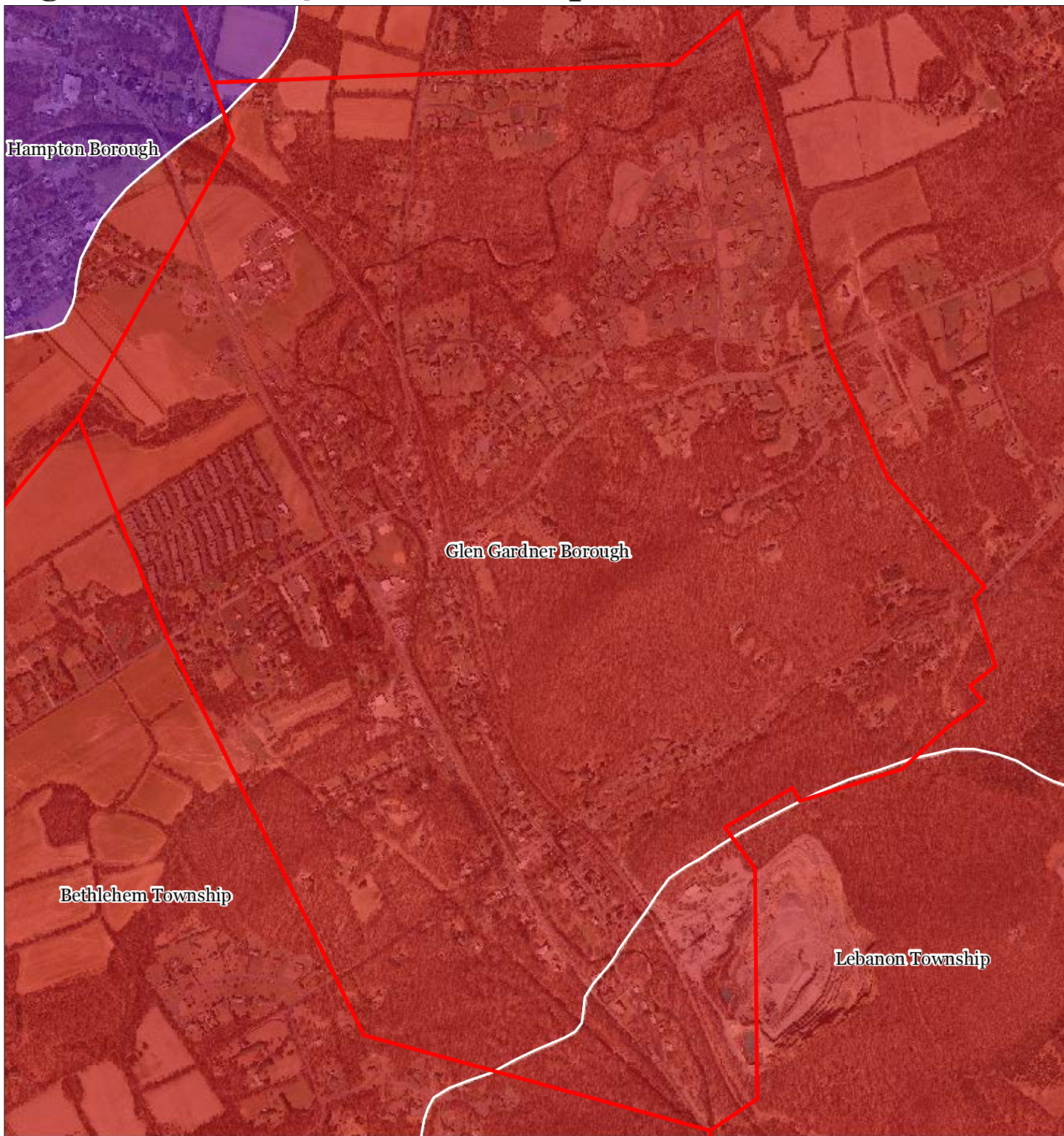
Glen Gardner Borough









1 inch = 0.205 miles



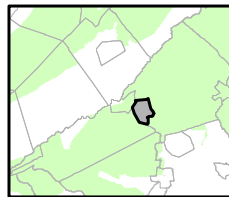
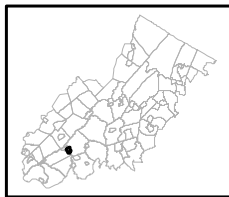
Figure 22: HUC 14s on NJDEP Impaired Waters List



Impaired Waters Overall Assessment by HUC14 Subwatershed

-  Non Impacted
-  Insufficient Data Available
-  Moderate
-  Water Quality Impaired
-  Preservation Area
-  Municipal Boundaries

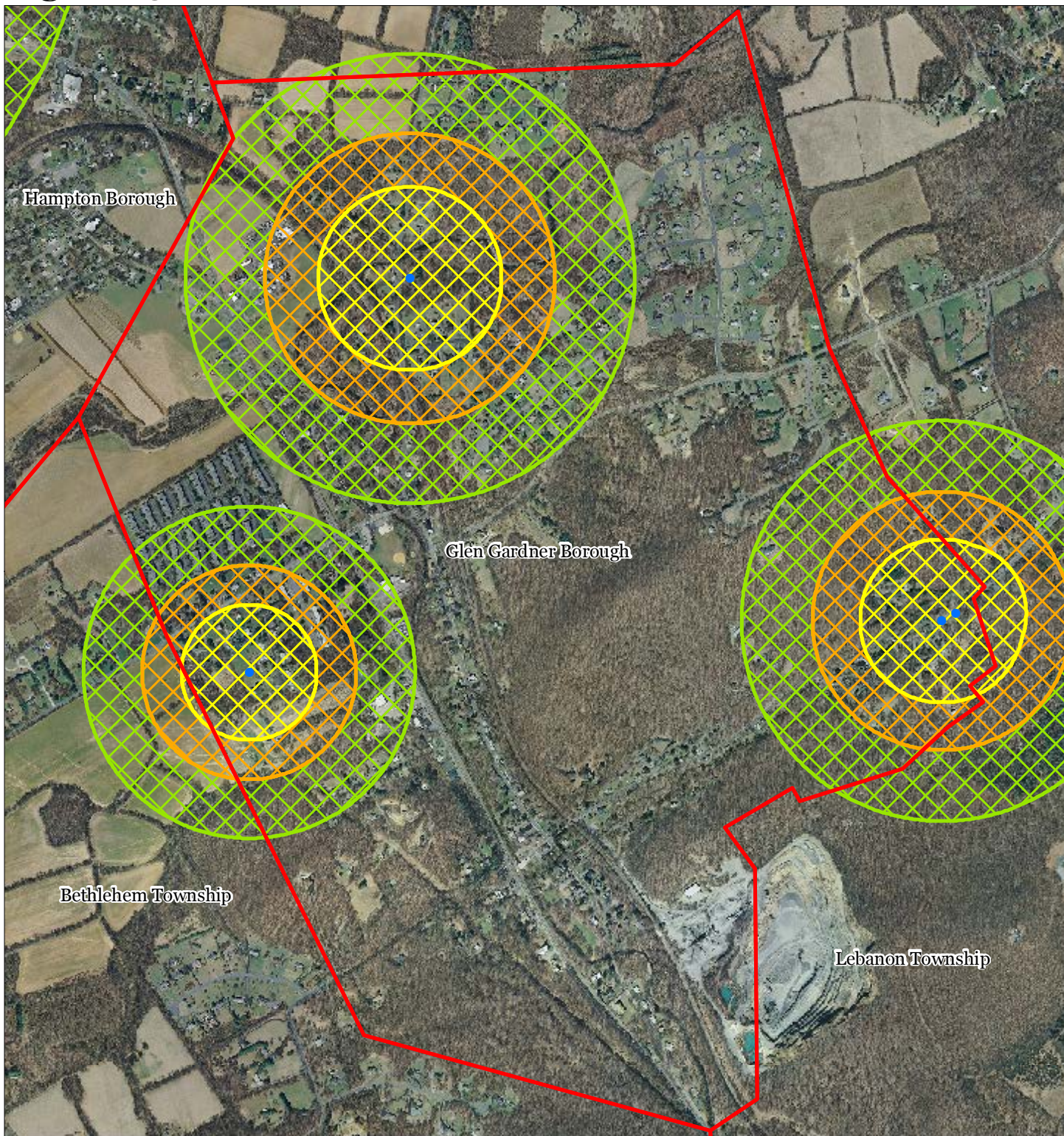
Glen Gardner Borough



1 inch = 0.205 miles



Figure 23: Wellhead Protection Areas



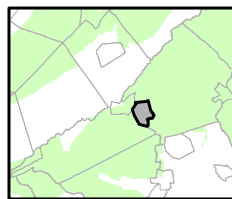
Glen Gardner Borough

- Public Community Wells
- Public Non-Community Wells

Wellhead Protection Areas

- 2-Year Tier
- 5-Year Tier
- 12-Year Tier

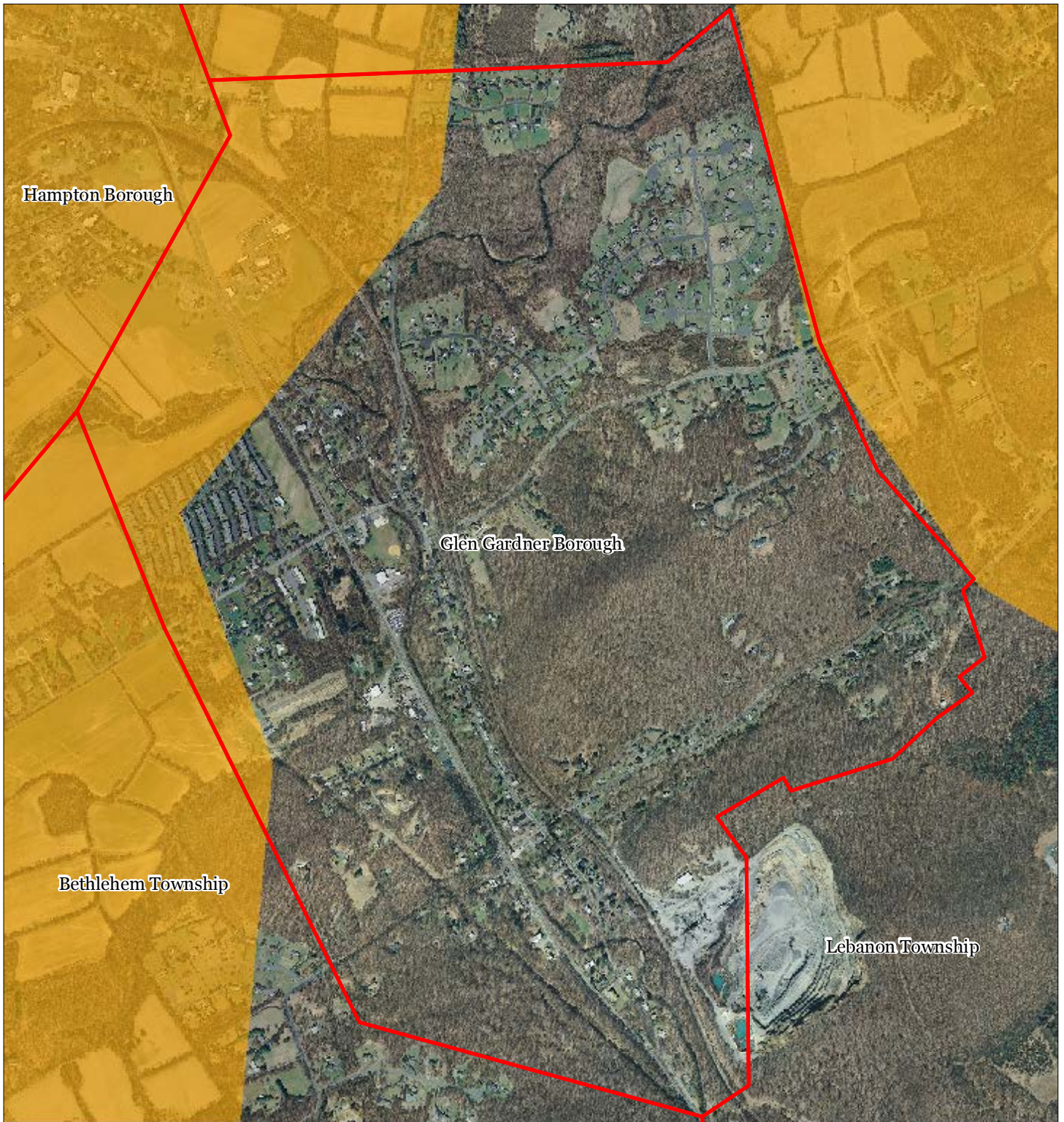
- Preservation Area
- Municipal Boundaries






1 inch = 0.205 miles

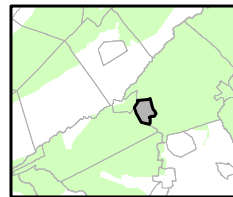
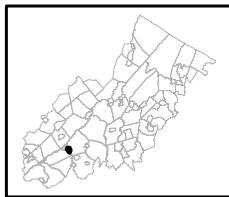


Figure 24: Agricultural Resource Area



-  Agricultural Resource Area
-  Preservation Area
-  Municipal Boundaries

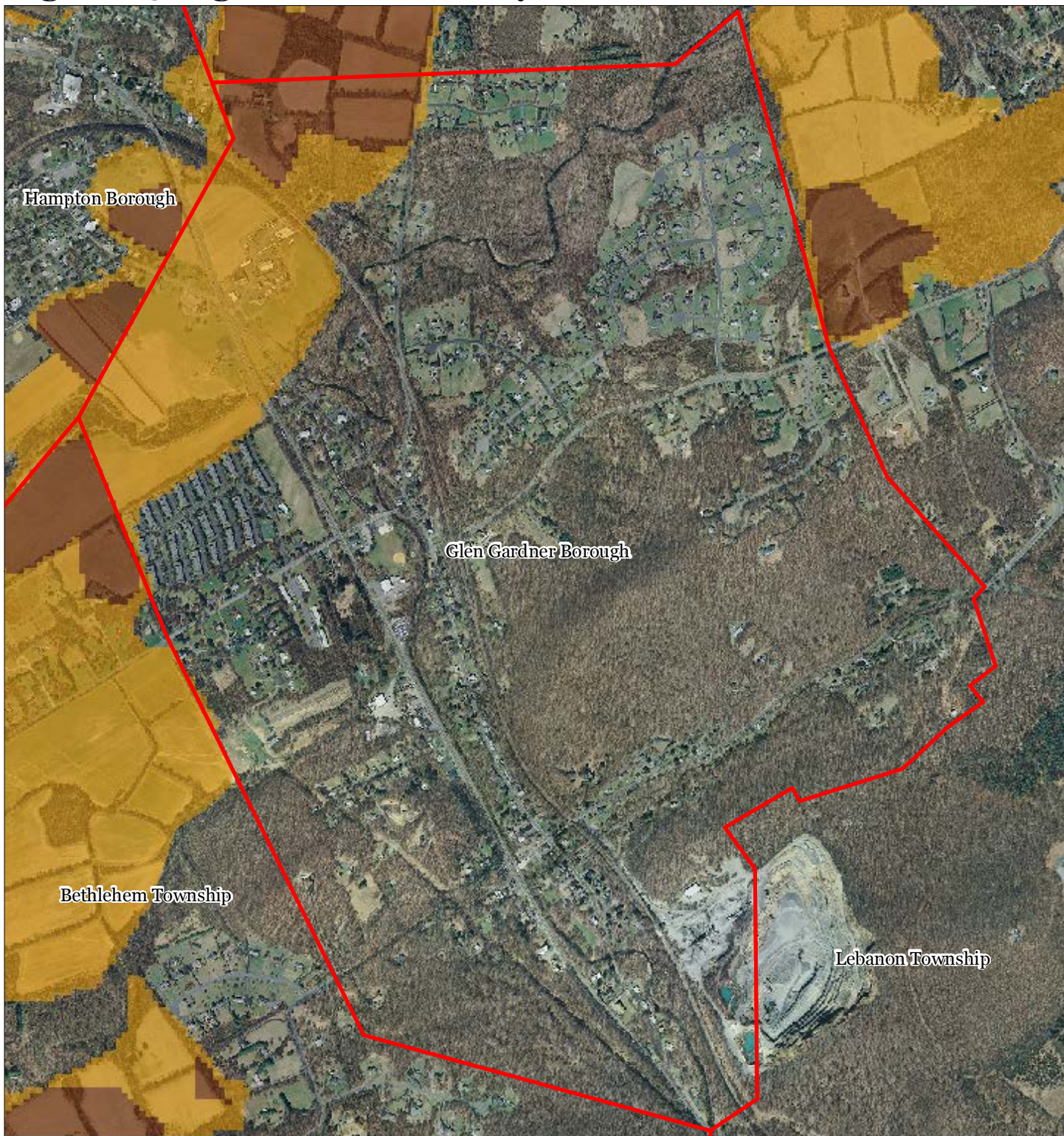
Glen Gardner Borough







1 inch = 0.205 miles



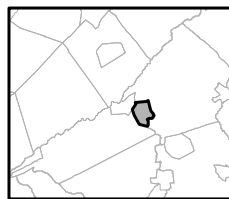
Figure 25: Agricultural Priority Area



Agricultural Priority Area

-  Moderate
-  High
-  Preservation Area
-  Municipal Boundaries

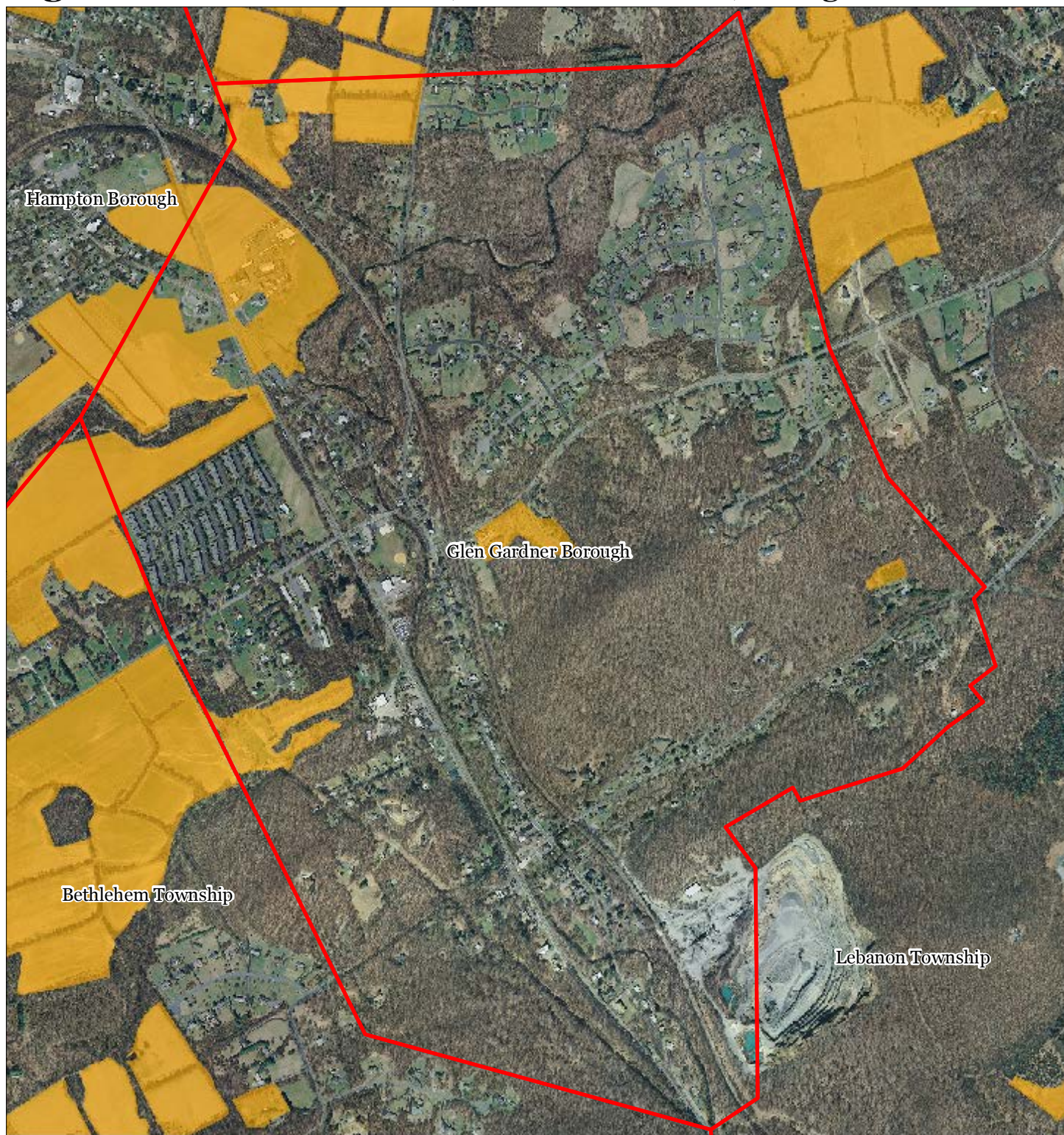
Glen Gardner Borough



1 inch = 0.205 miles



Figure 26: Preserved Farms, SADC Easements, All Agricultural Uses



SADC Easements



SADC Final



Preservation Area



SADC Preserved



Municipal Boundaries

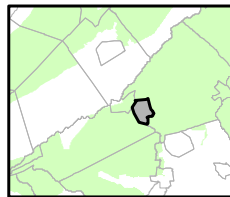
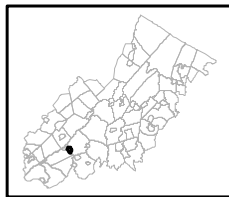


Preserved Farmland



Agriculture Uses

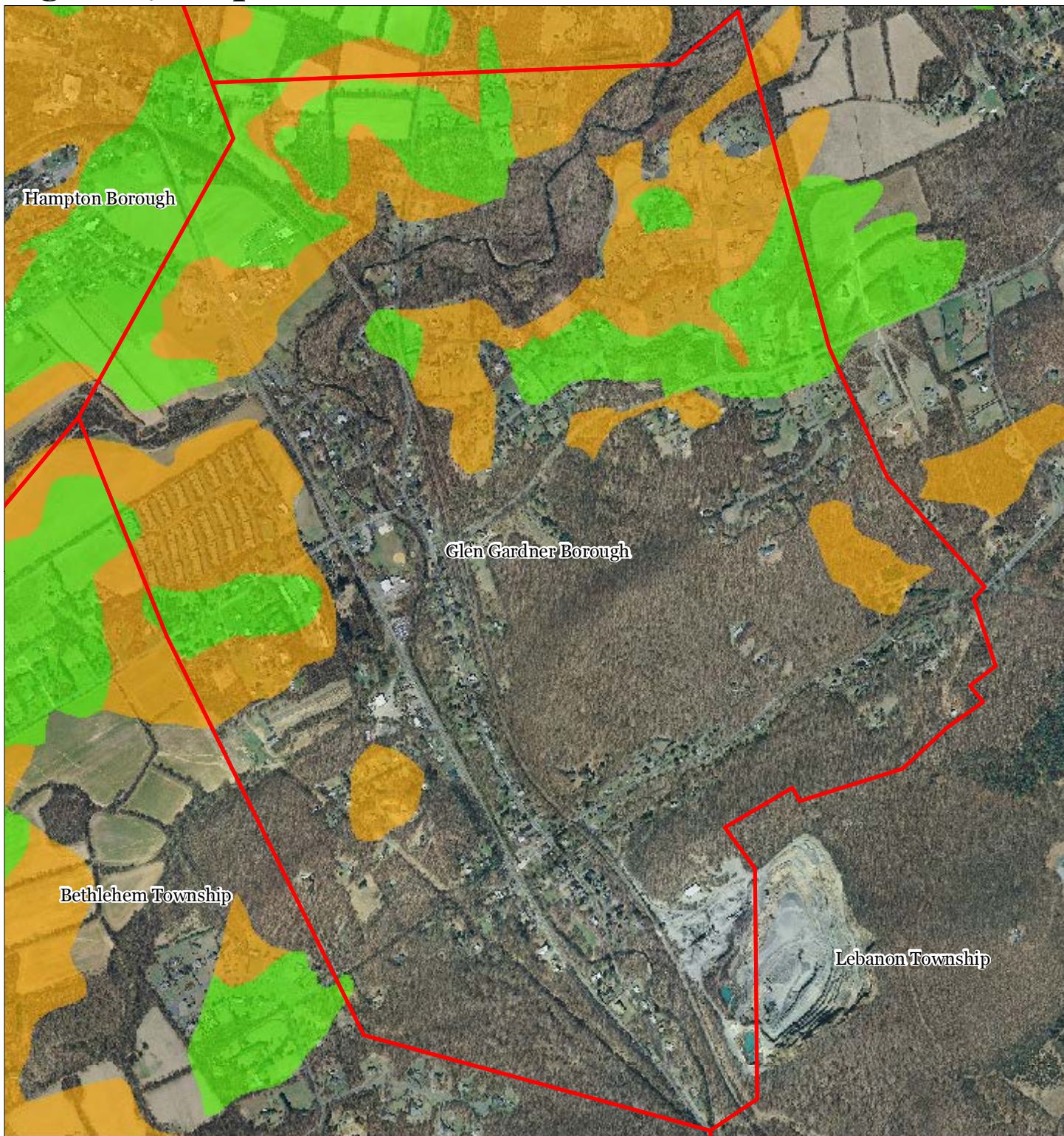
Glen Gardner Borough



1 inch = 0.205 miles



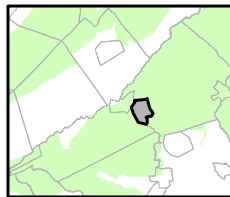
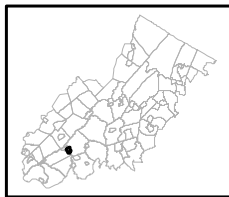
Figure 27: Important Farmland Soils



Important Farmland Soils

-  Prime Farmland
-  Farmland of Local Importance
-  Farmland of Statewide Importance
-  Farmland of Unique Importance
-  Preservation Area
-  Municipal Boundaries

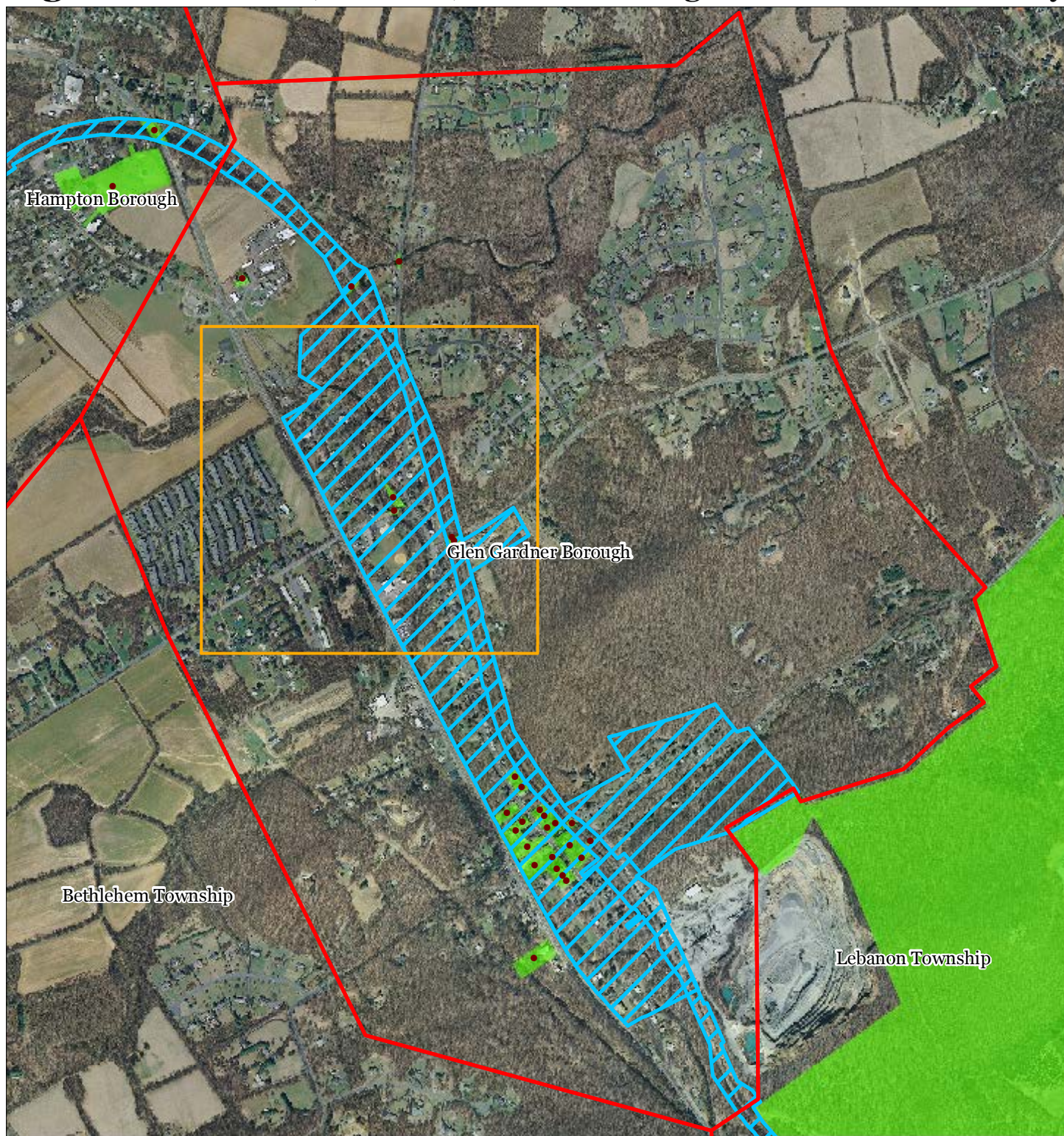
Glen Gardner Borough




1 inch = 0.205 miles

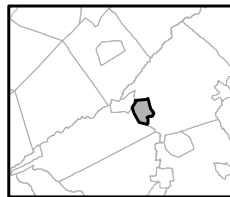
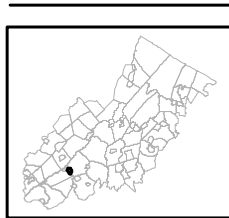


Figure 28: Historic, Cultural, and Archaeological Resources Inventory



-  Preservation Area
-  Municipal Boundaries
-  Archaeological Grids (1 sqmi)
-  NJ Historic Districts
-  Historic Property Points
-  Historic Property Polygons

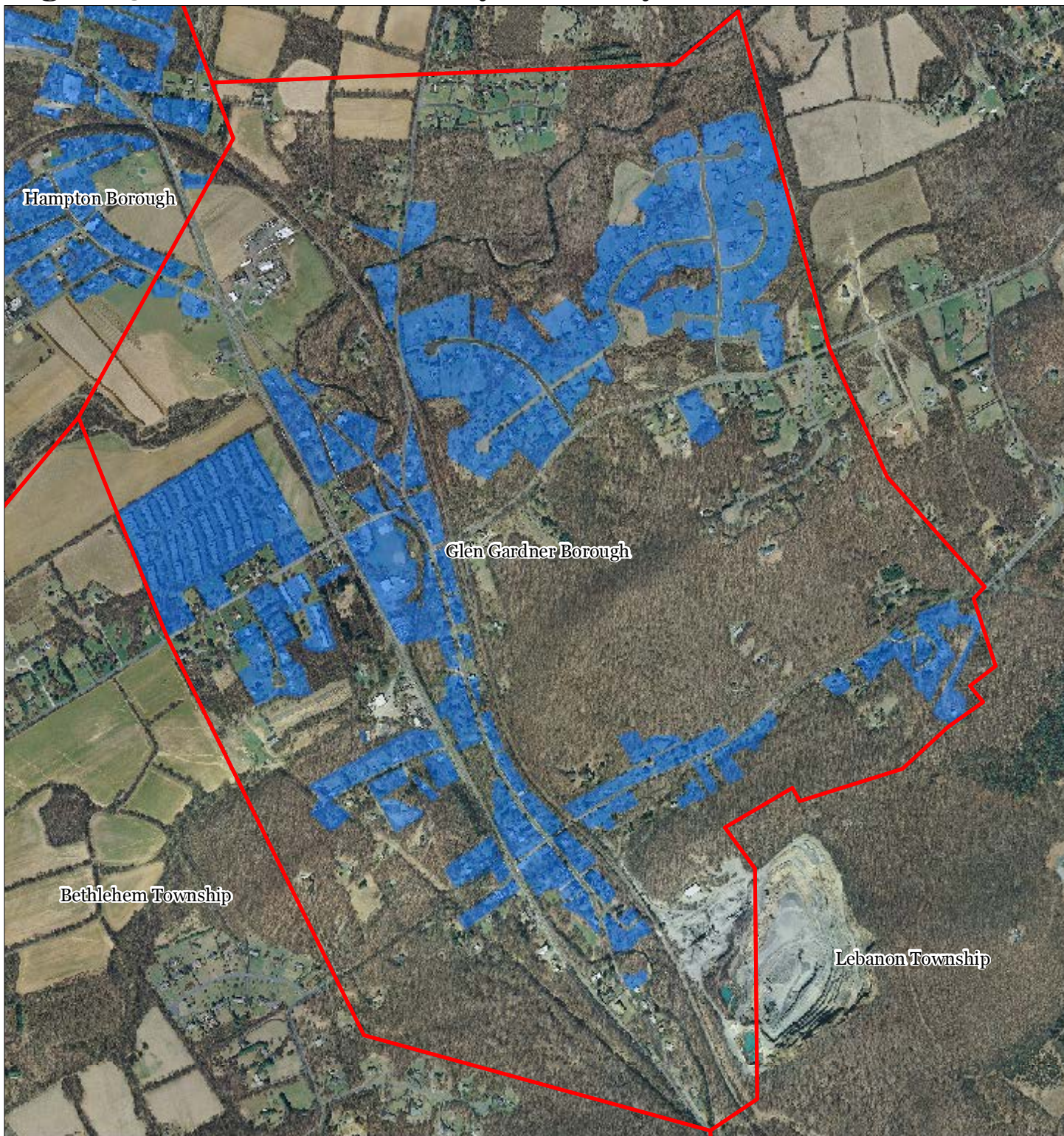
Glen Gardner Borough






1 inch = 0.205 miles

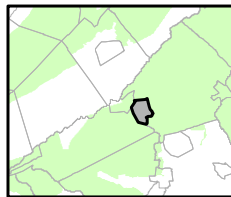
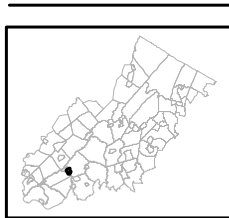


Figure 31: Public Community Water Systems



-  Public Community Water Systems
-  Preservation Area
-  Municipal Boundaries

Glen Gardner Borough



1 inch = 0.205 miles



Figure 33: Highlands Roadway Network




Roadway Network

 Interstate Highways


 U.S. Routes

 State Routes

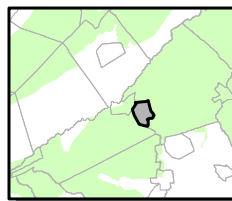
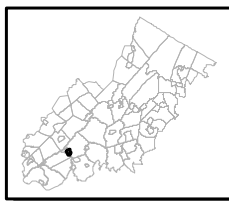
 County Routes

 Local Routes

 Preservation Area

 Municipal Boundaries

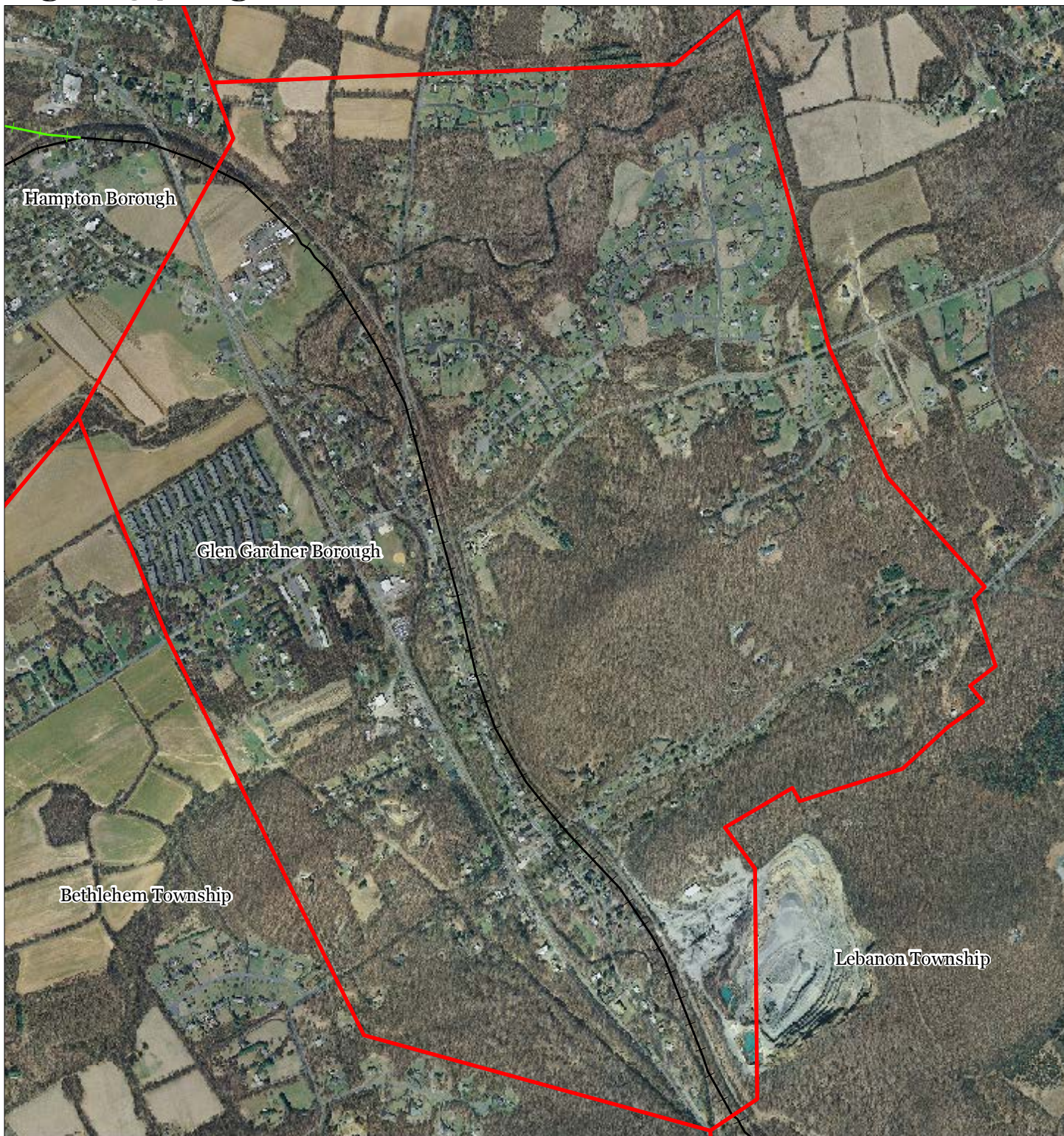
Glen Gardner Borough



1 inch = 0.205 miles

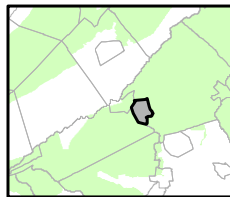
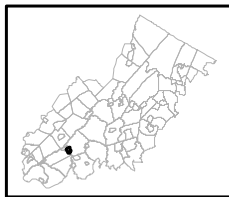


Figure 34: Highlands Transit Network



- | | |
|--------------------------------|----------------------|
| Rail Network | Rail Stations |
| Boonton Line | Park and Ride Sites |
| Main Line & Bergen County Line | Private Bus Lines |
| Morris and Essex Line | NJ Transit Bus Lines |
| Raritan Valley Line | Airports |
| Freight Rail Lines | |
| Freight Rail Lines | |
| Abandoned Freight Rail | |

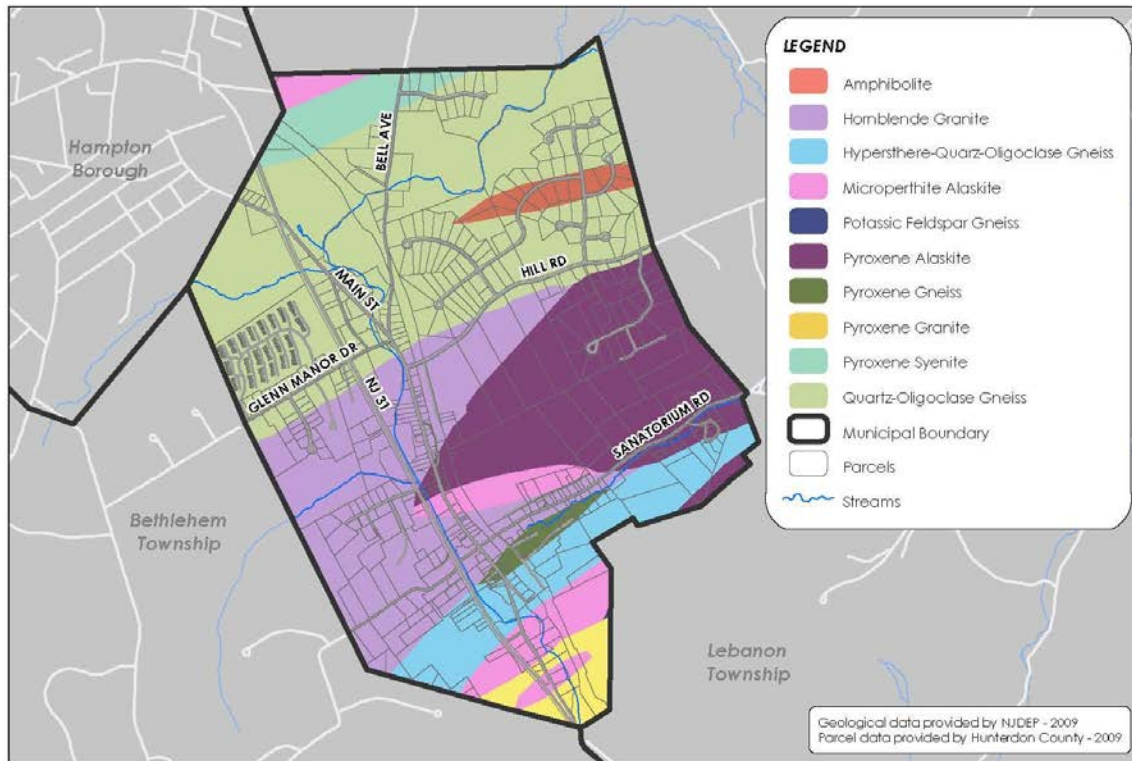
Glen Gardner Borough



1 inch = 0.205 miles



Figure 35. Bedrock Geology



Glen Gardner Borough
 Hunterdon County, New Jersey

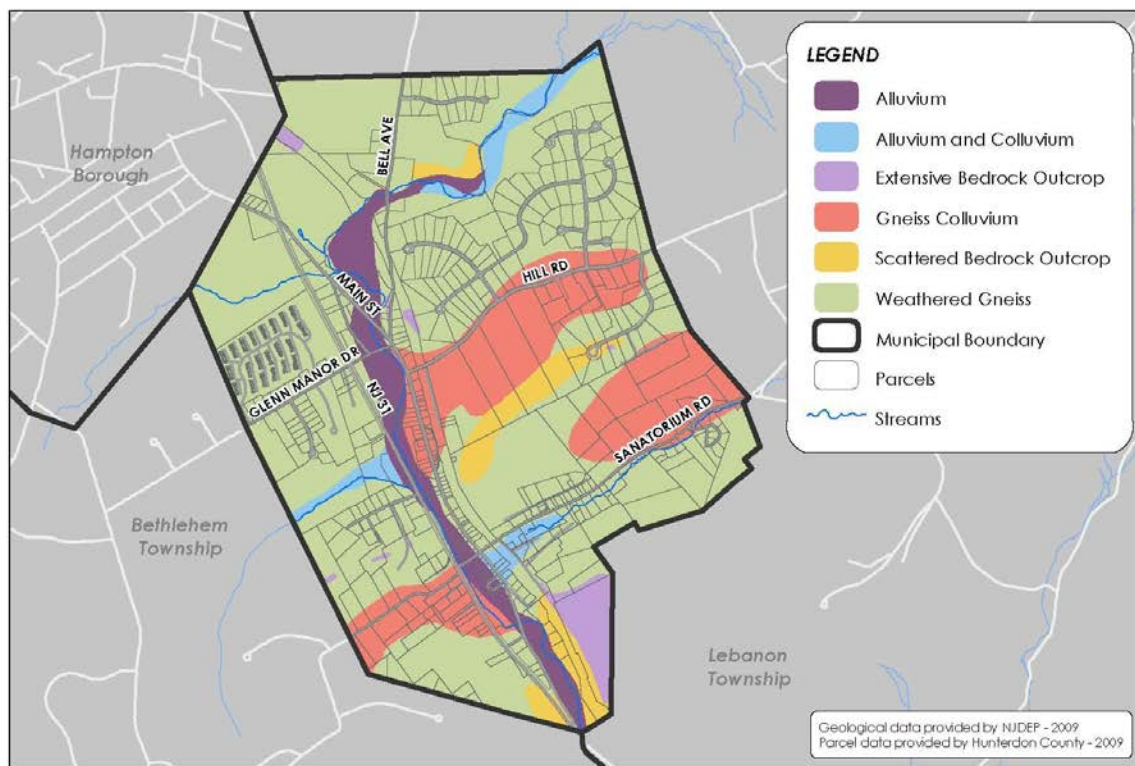
Appendix B

BEDROCK GEOLOGY



May 2009 Drawn by: MM K:\Project\GARD0102_borough_of_Glen_Gardner_HBFC\02_Graphic\GE\Volume 4\Geology\Map\Bedrock_Geology.mxd

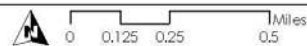
Figure 36. Surficial Geology



Glen Gardner Borough
Hunterdon County, New Jersey

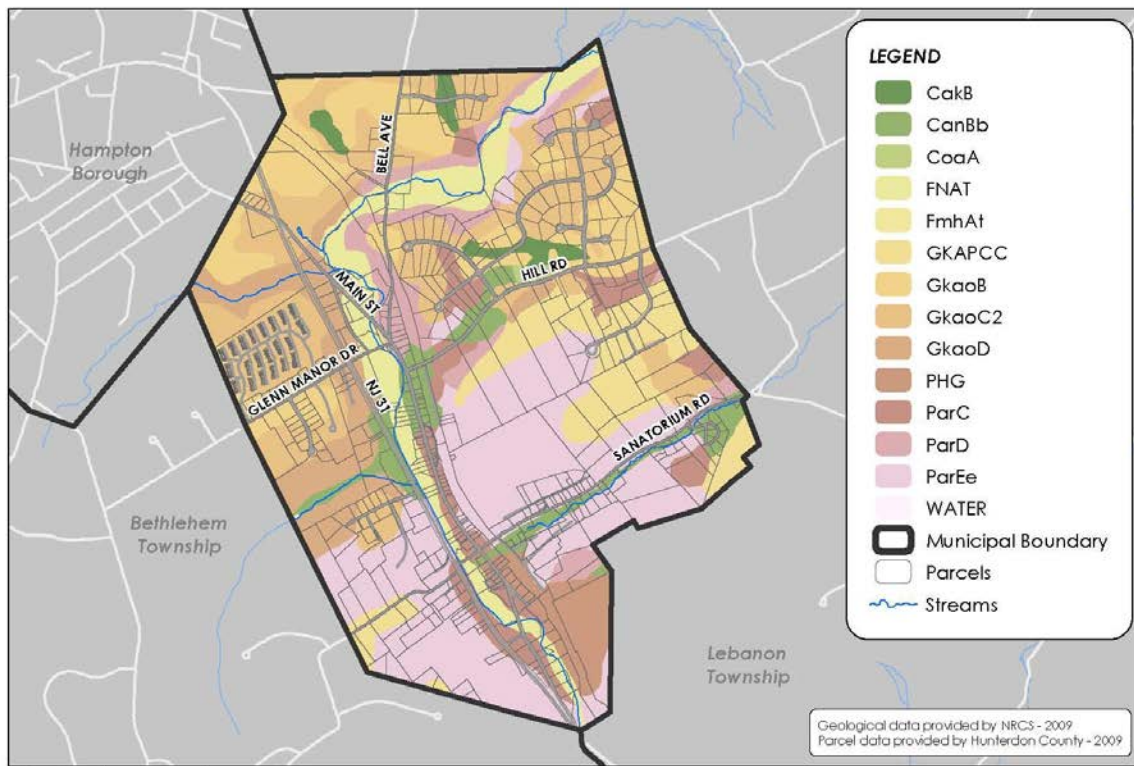
Appendix C

SURFICIAL GEOLOGY



May 2009 Drawn by: AMI E:\Project\G4609002_borough_of_Glen_Gardner_HRPI\02_Graphics\G4609002\Map\G4609002_Surficial_Geology.mxd

Figure 37. Soils



Glen Gardner Borough
 Hunterdon County, New Jersey

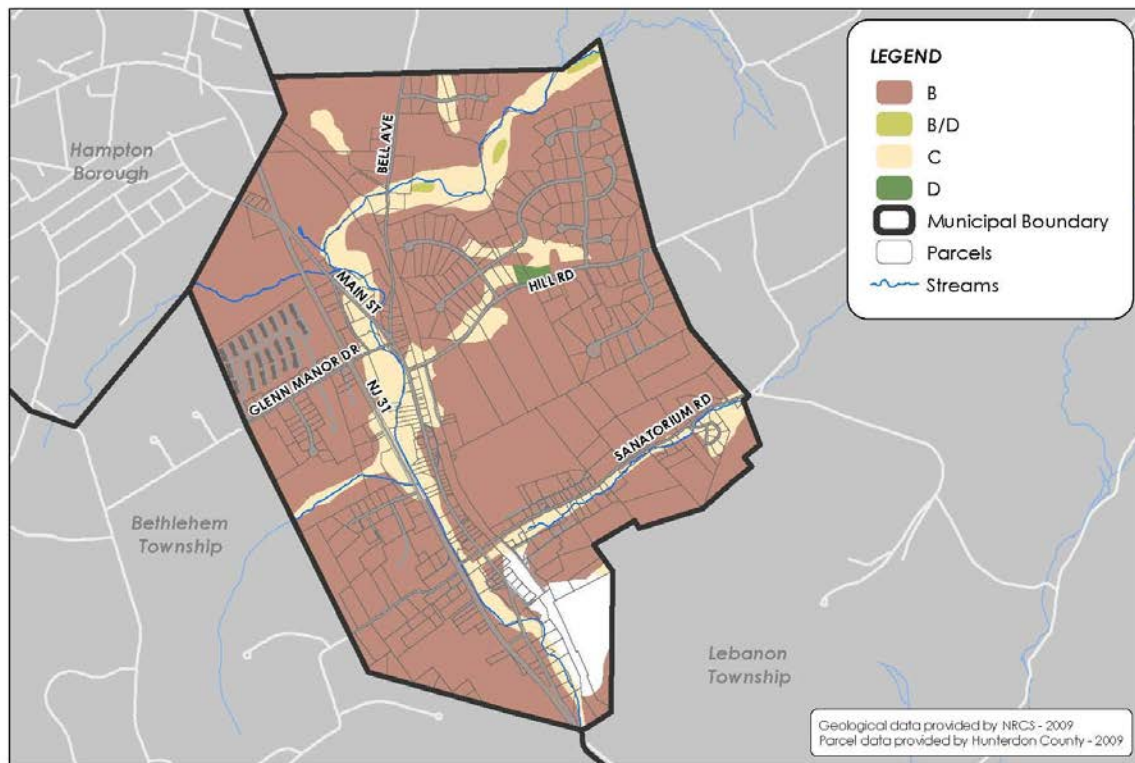
Appendix D

SOILS



May 2009 Drawn by: AMI E:\Project\Glen\0902_borough_of_glen_gardner_HRPI\02_Graphics\G6\Mapfile 4\Geology Map\Soil Types.mxd

Figure 38. Hydrologic Soil Groups



Glen Gardner Borough
Hunterdon County, New Jersey

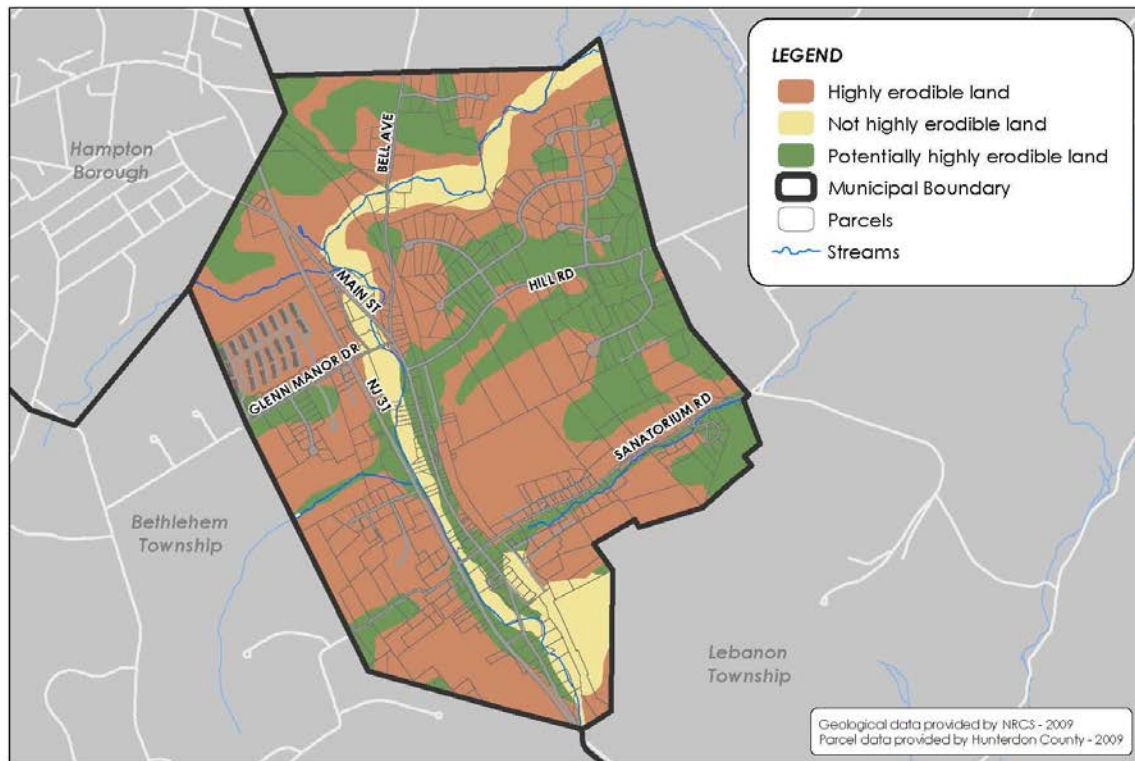
Appendix E

HYDROLOGIC SOIL GROUPS



May 2009 Drawn by: AMM K:\Projects\GARD09002_borough_of_glen_gardner_HRF\05_Graphics\G6\Workbook 4\Geology Maps\Hydro_Soils.mxd

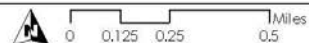
Figure 39. Soil Erodibility



Glen Gardner Borough
Hunterdon County, New Jersey

Appendix F

SOIL ERODIBILITY



May 2009 Drawn by: AMM K:\Projects\GM001002_borough_of_Glen_Gardner_HRF\02_Graphics\06\Module 4\Geology\Map\Soil Erodibility.mxd