

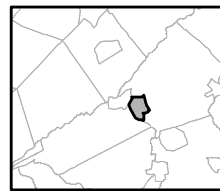
Exhibit A: Regional Master Plan Overlay Zone Designation



Regional Master Plan Overlay Zone Designation

- | | |
|--|-----------------------------|
| Zone | Lakes Greater Than 10 acres |
| Protection | Preservation Area |
| Conservation | Municipal Boundaries |
| Existing Community | |
| Sub-Zone | |
| Existing Community Environmentally Constrained | |
| Conservation Environmentally Constrained | |
| Lake Community | |
| Wildlife Management | |

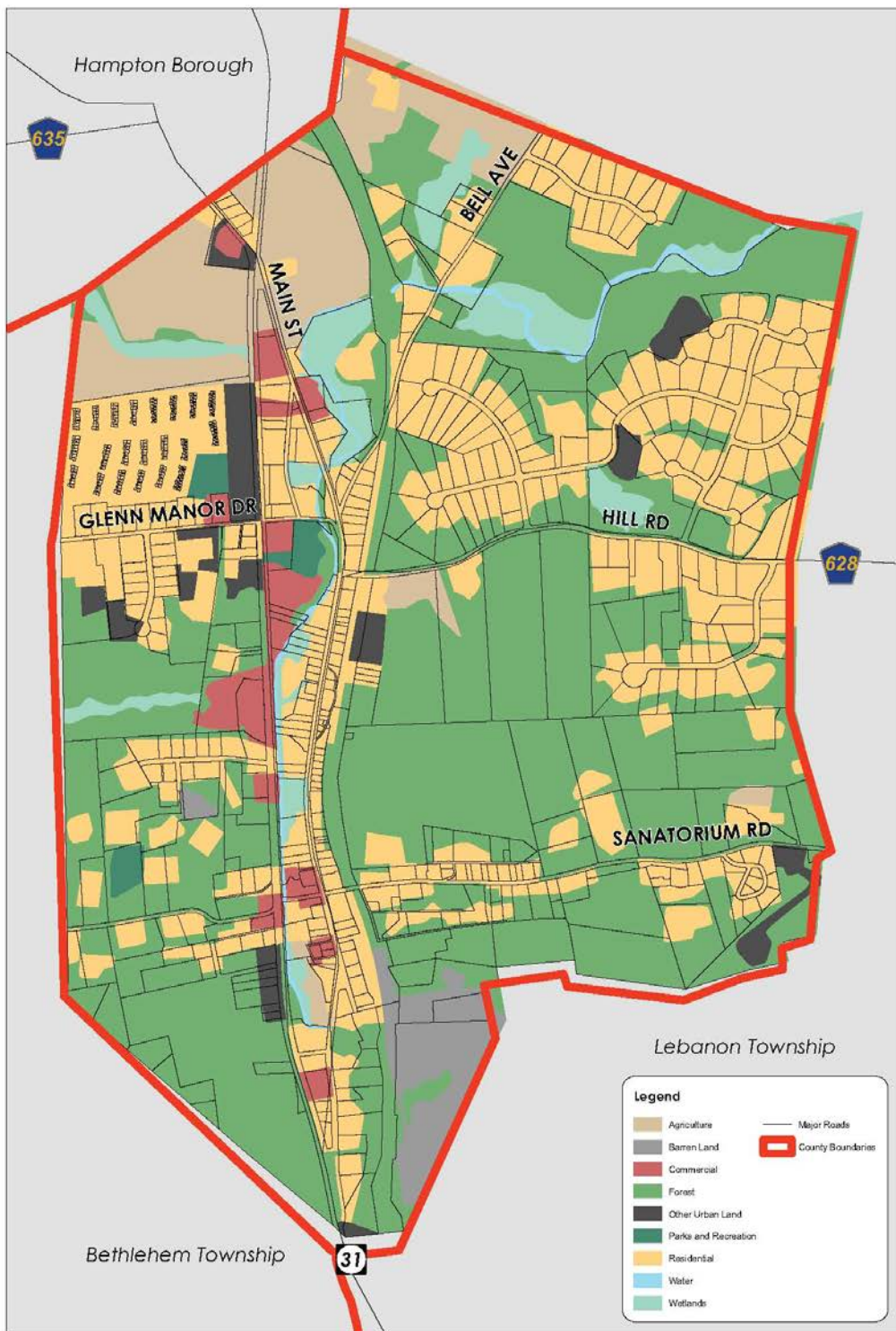
Glen Gardner Borough



1 inch = 0.205 miles



Exhibit B: Land Use Inventory

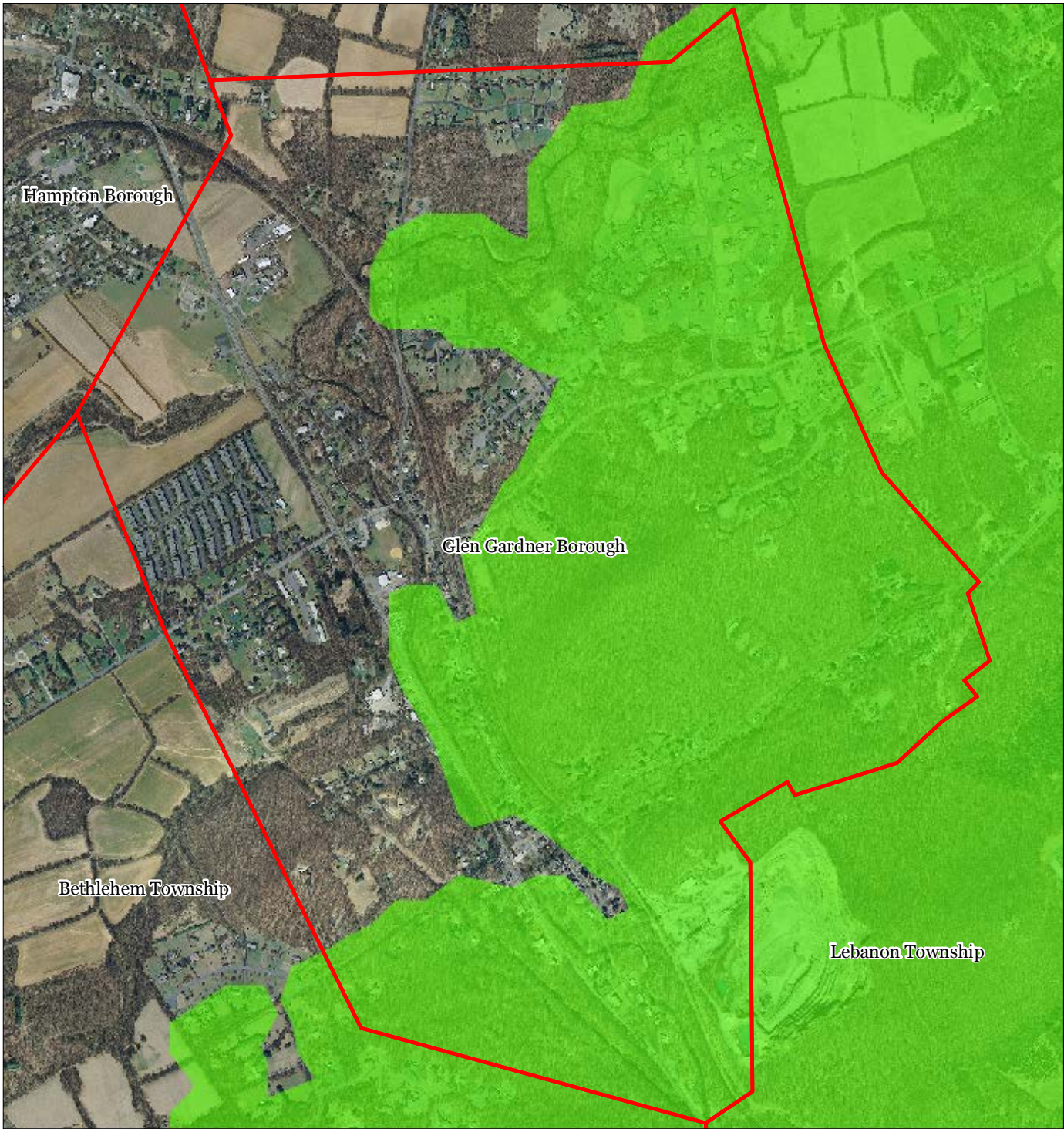





GLEN GARDNER
2002 Land Use/Land Cover

updated: JULY 20, 2009

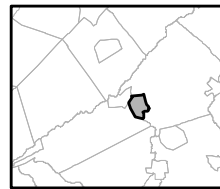
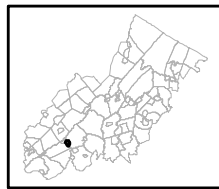


Exhibit C: Forest Resource Area



-  Forest Resource Area
-  Preservation Area
-  Municipal Boundaries

Glen Gardner Borough






1 inch = 0.205 miles

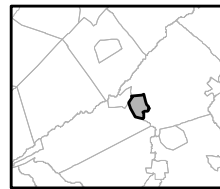
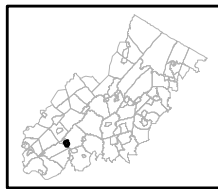


Exhibit D: Total Forest Area



-  Forested Areas
-  Preservation Area
-  Municipal Boundaries

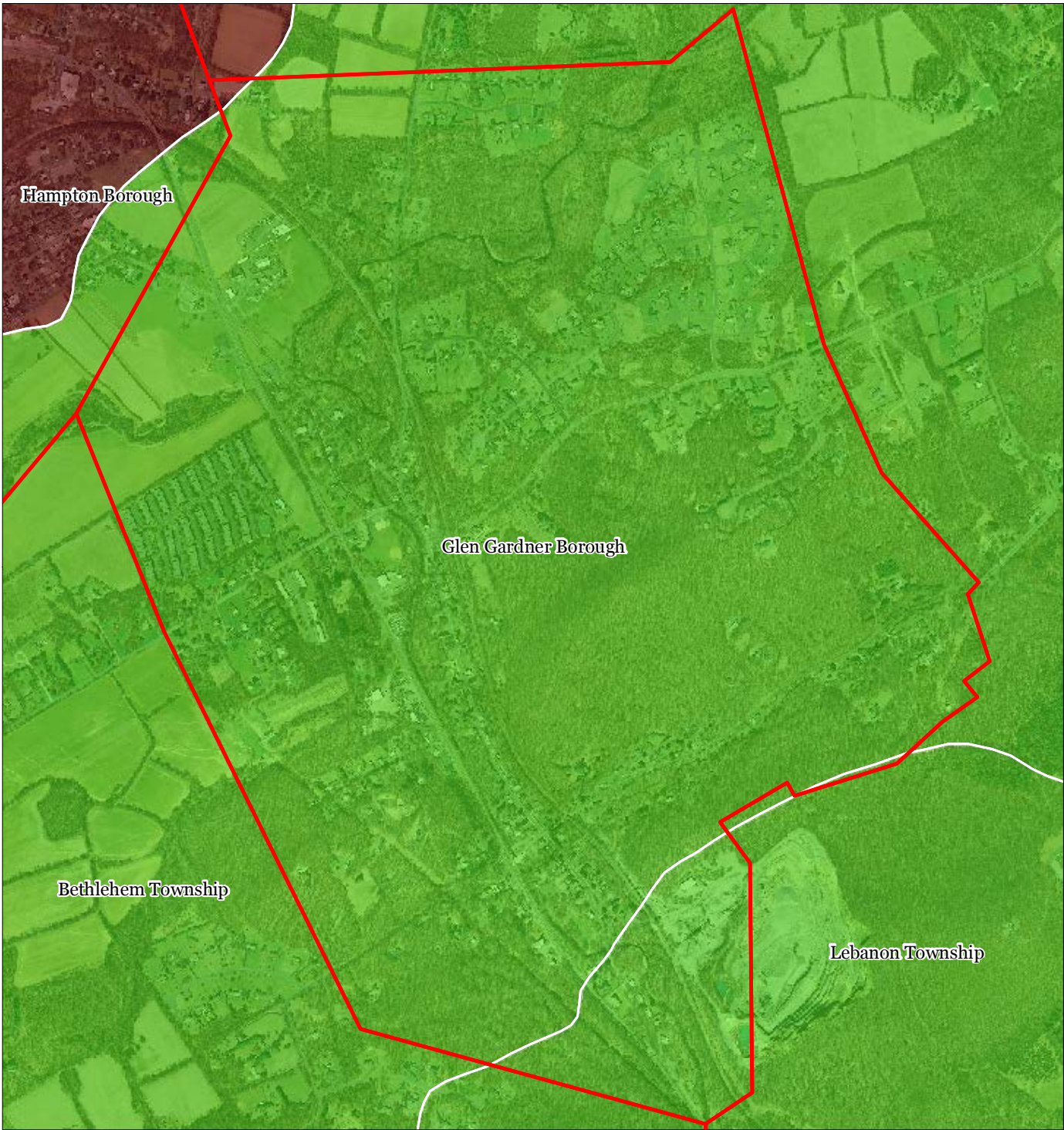
Glen Gardner Borough








1 inch = 0.205 miles



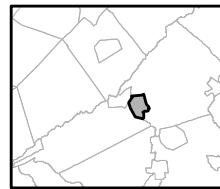
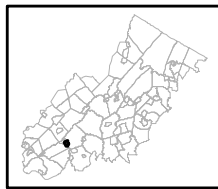
Exhibit E: Forest Subwatersheds



Forest Integrity by HUC14 Subwatershed

-  *Low*
-  *Moderate*
-  *High*
-  Preservation Area
-  Municipal Boundaries

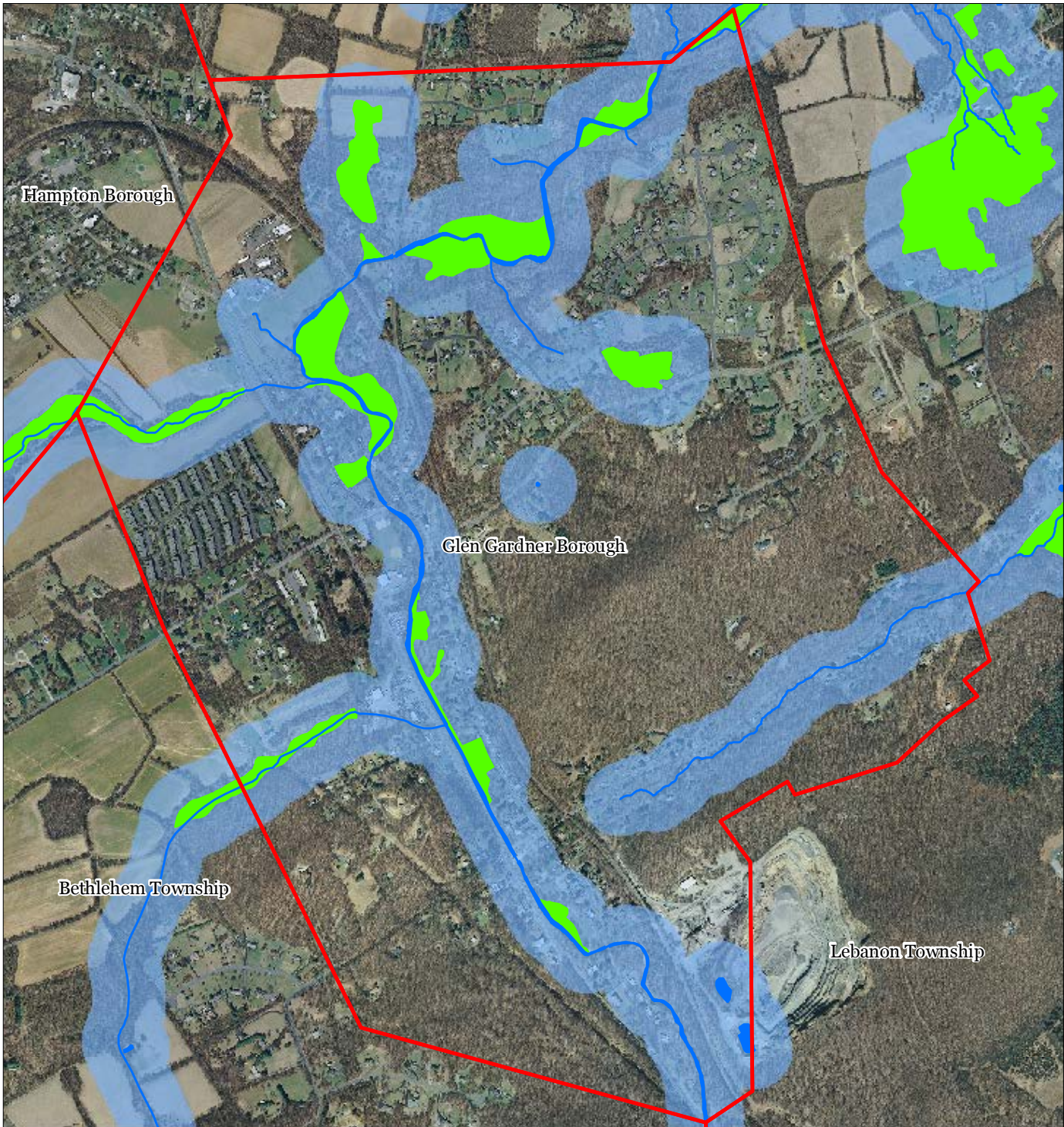
Glen Gardner Borough



1 inch = 0.205 miles

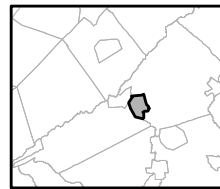


Exhibit F: Highlands Open Waters



-  Highlands Open Water Buffers (300ft)
-  Streams
-  Wetlands
-  Lakes & Ponds
-  Preservation Area
-  Municipal Boundaries

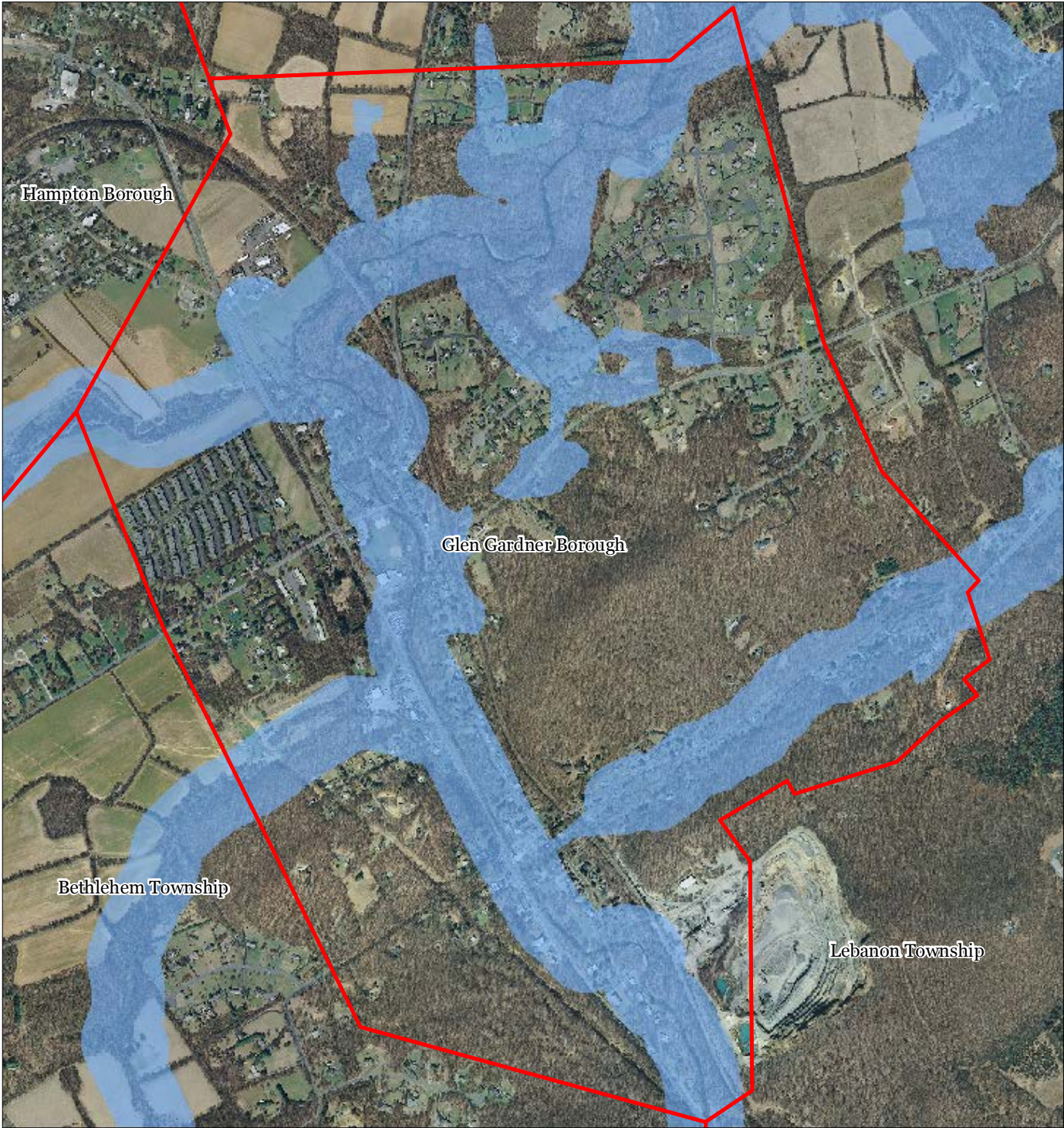
Glen Gardner Borough

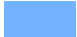




1 inch = 0.205 miles



Exhibit G: Highlands Riparian Area



-  Riparian Area
-  Preservation Area
-  Municipal Boundaries

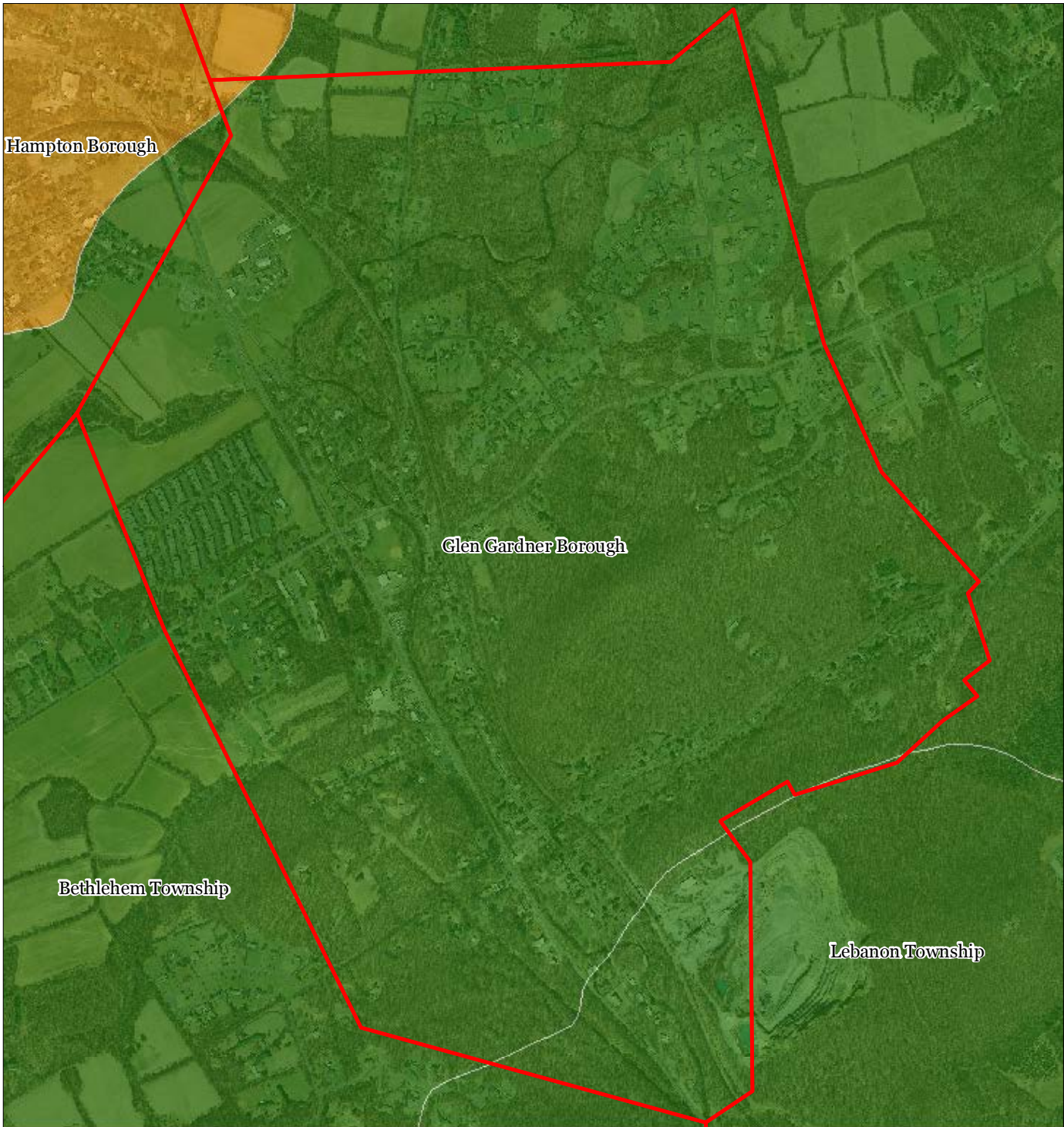
Glen Gardner Borough






1 inch = 0.205 miles



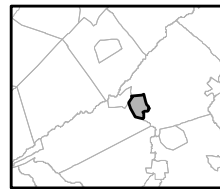
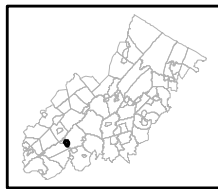
Exhibit H: Watershed Values



Watershed Values by HUC14 Subwatershed

-  *Low*
-  *Moderate*
-  *High*
-  Preservation Area
-  Municipal Boundaries

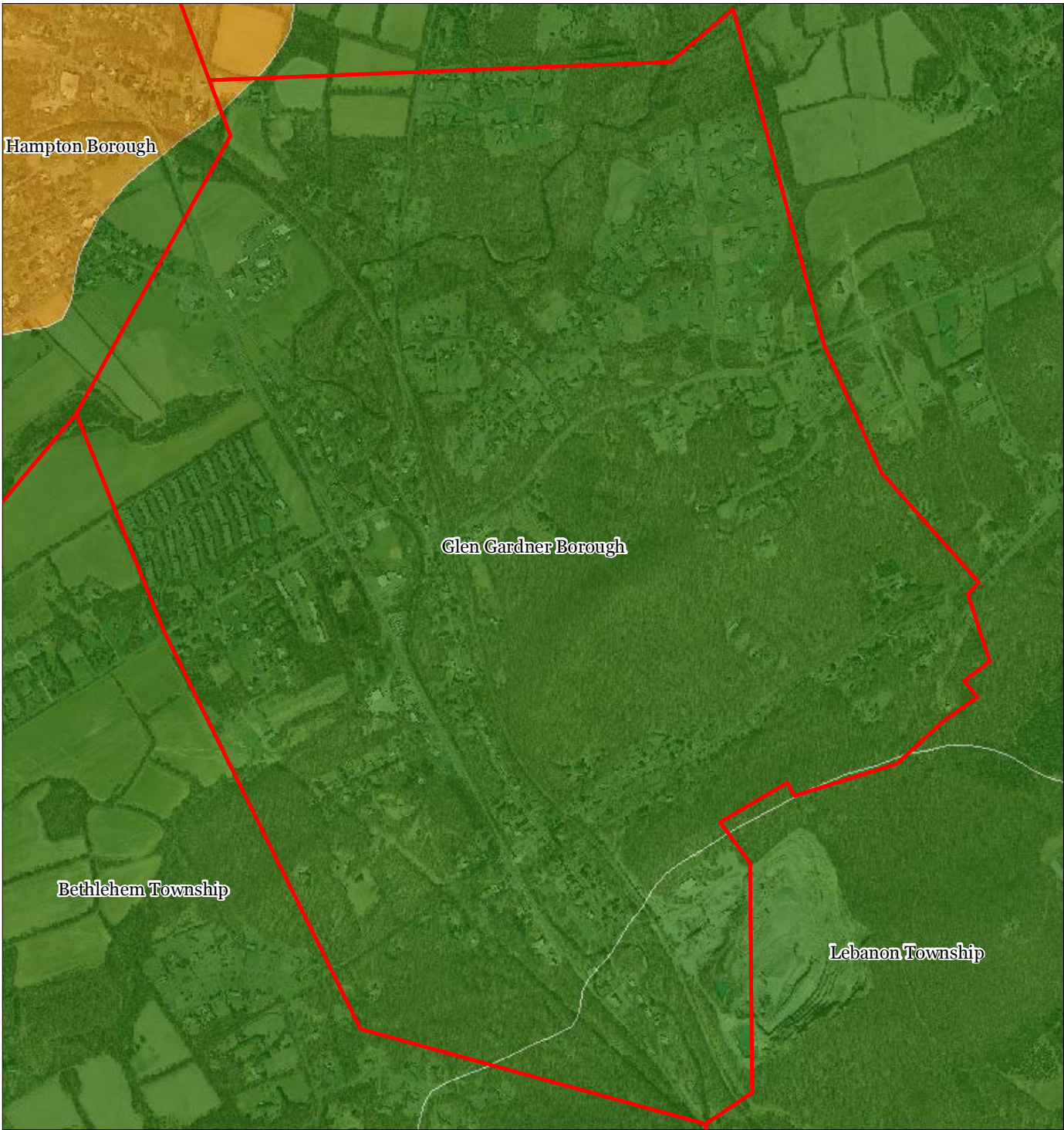
Glen Gardner Borough



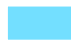




1 inch = 0.205 miles



Exhibit I: Riparian Integrity



Riparian Integrity by HUC14 Subwatershed

-  *Low*
-  *Moderate*
-  *High*
-  Preservation Area
-  Municipal Boundaries

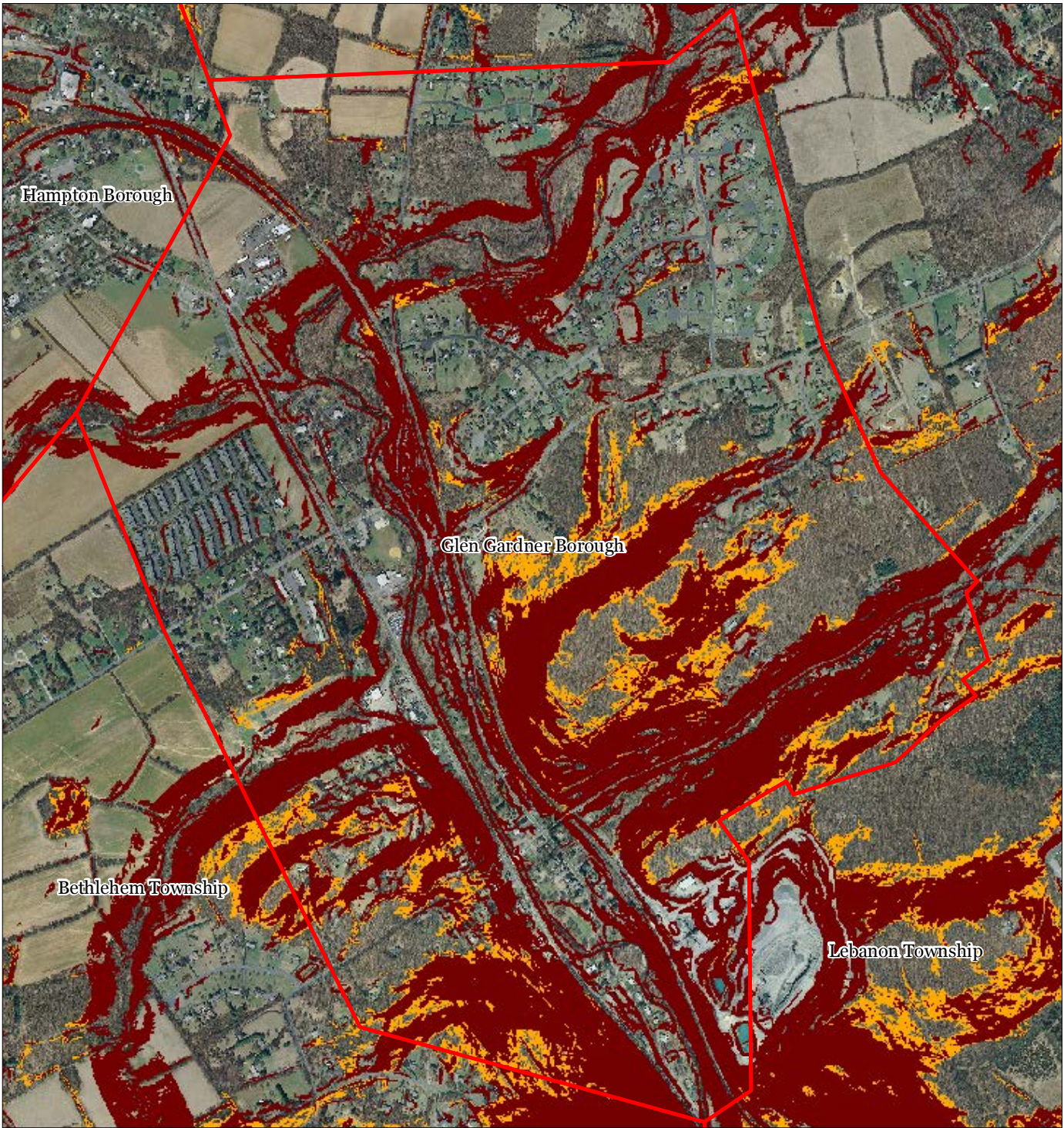
Glen Gardner Borough



1 inch = 0.205 miles



Exhibit J: Steep Slope Protection Areas



Steep Slope

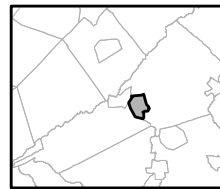
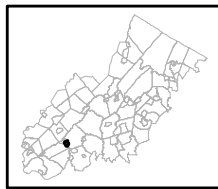
 Moderate

 Severe

 Preservation Area

 Municipal Boundaries

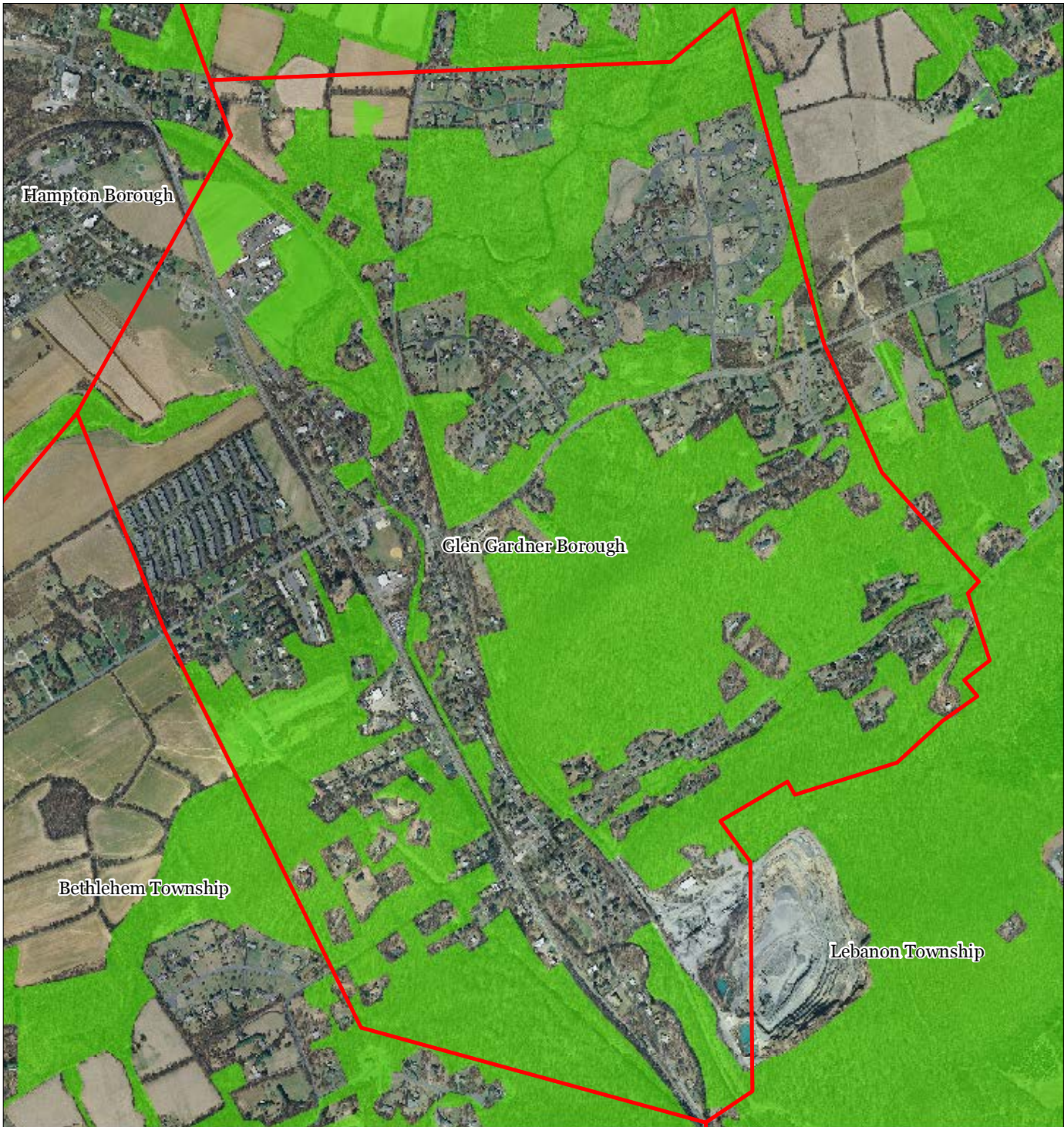
Glen Gardner Borough






1 inch = 0.205 miles

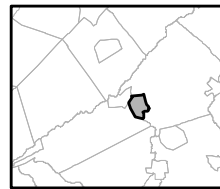


Exhibit K: Critical Wildlife Habitat



-  Critical Wildlife Habitat
-  Preservation Area
-  Municipal Boundaries

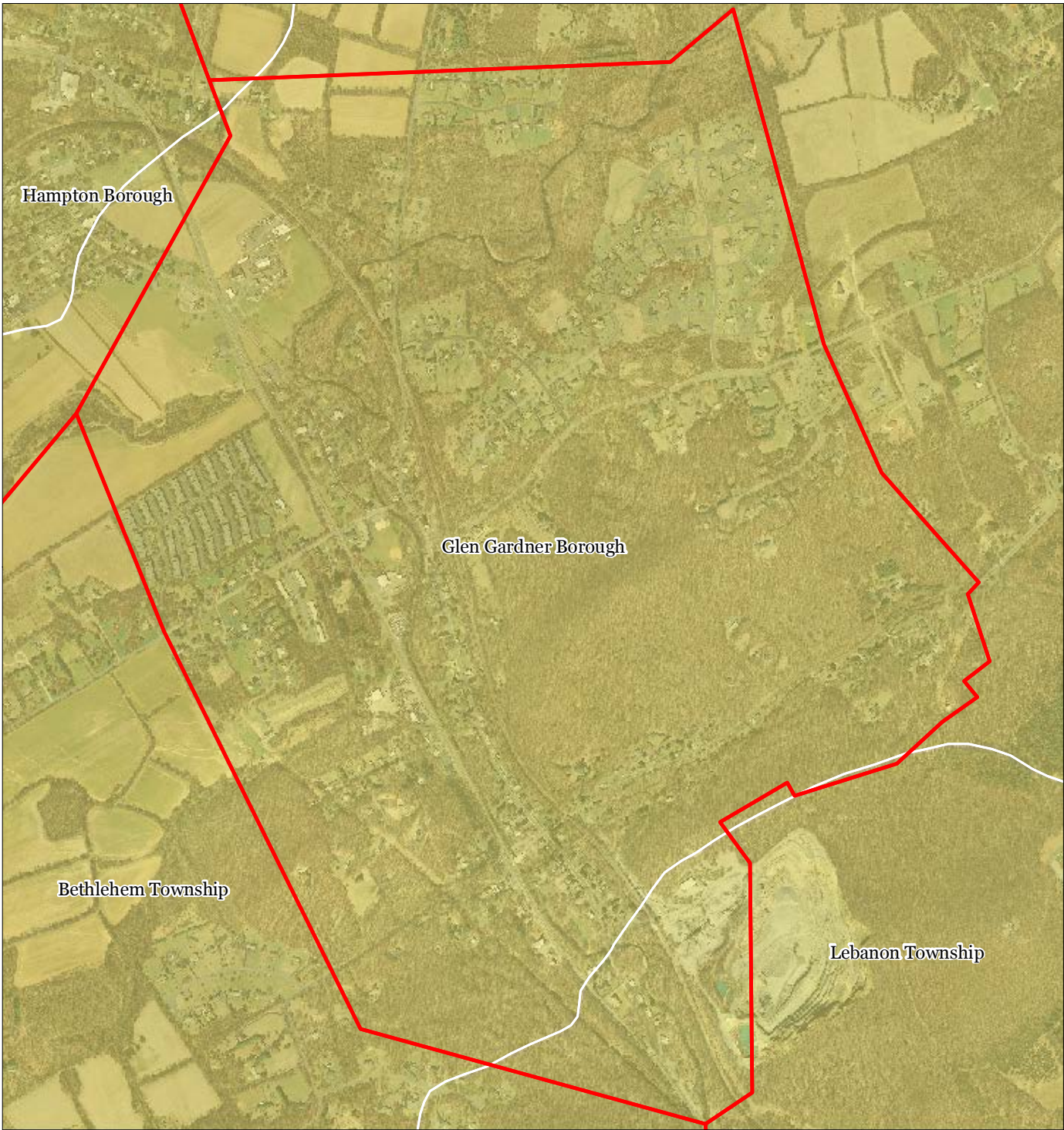
Glen Gardner Borough



1 inch = 0.205 miles



Exhibit L: Net Water Availability



Net Water Availability By HUC14

Million Gallons Per Day (MGD)

- 0.10 - 0.39
- 0.05 - 0.09
- 0.00 - 0.04
- 0.09 - 0.00
- 0.99 - -0.10
- 7.10 - -1.00

- Preservation Area
- Municipal Boundaries

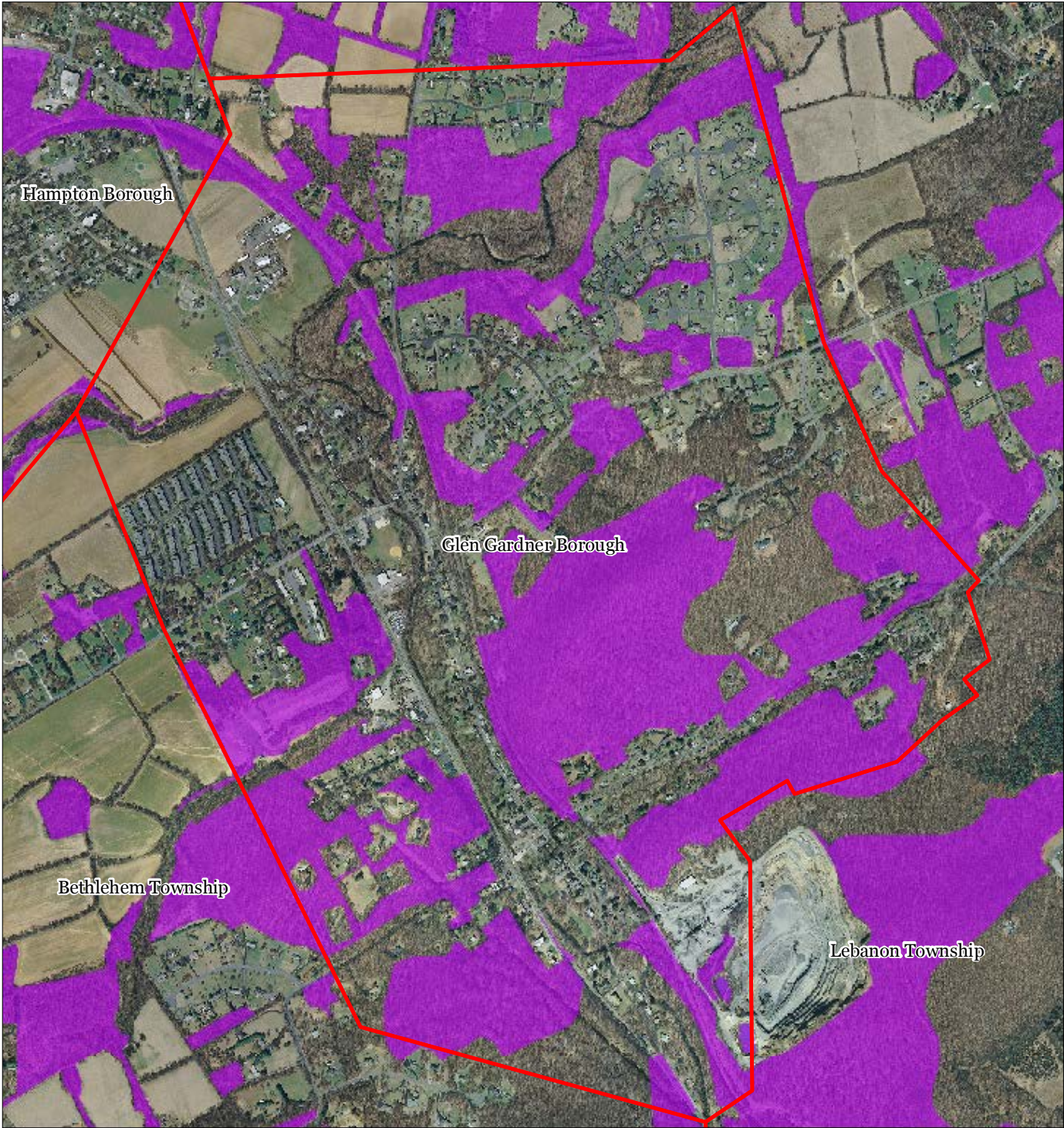
Glen Gardner Borough






1 inch = 0.205 miles



Exhibit M: Prime Ground Water Recharge Areas



-  Prime Groundwater Recharge Areas
-  Preservation Area
-  Municipal Boundaries

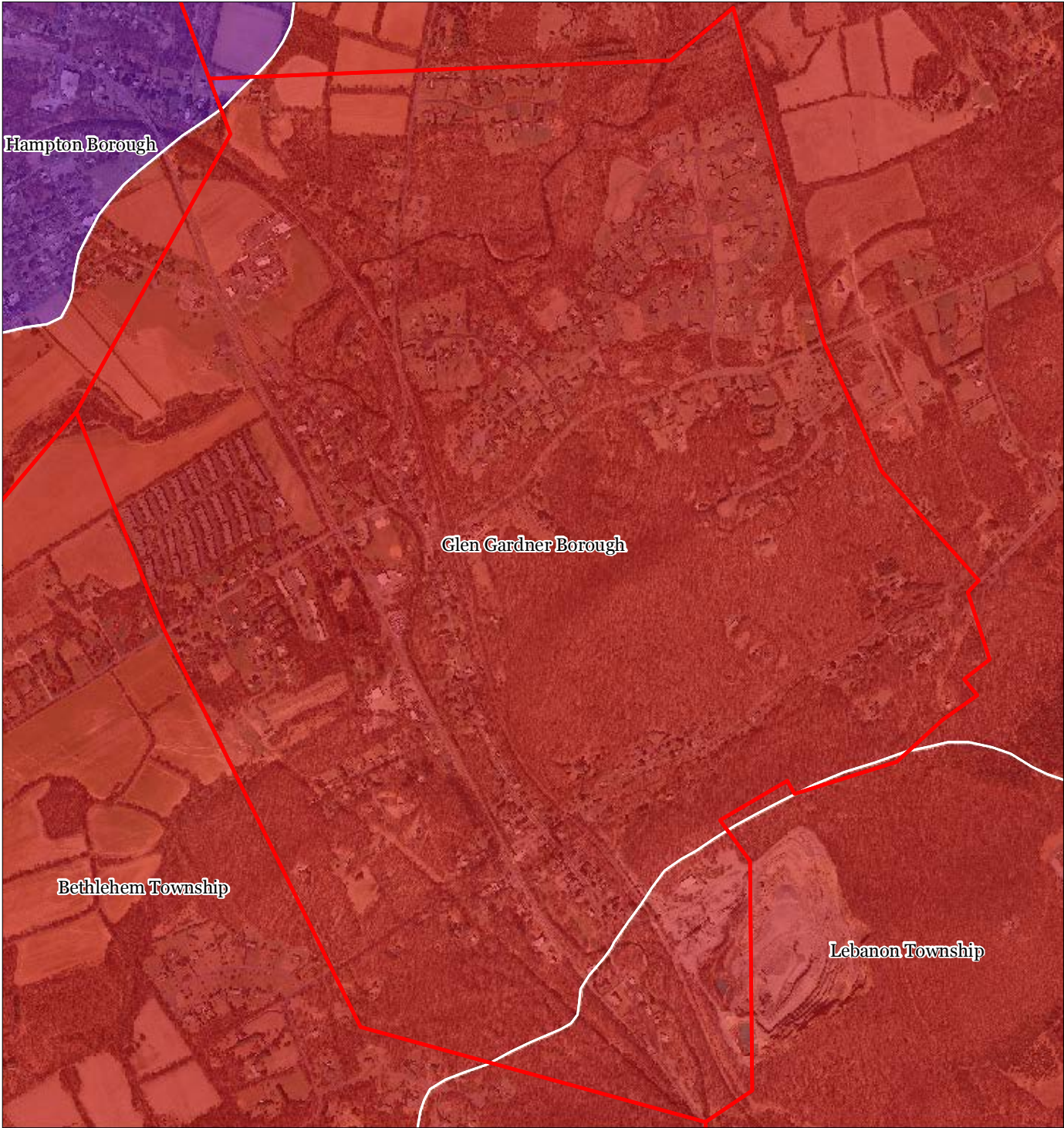
Glen Gardner Borough









1 inch = 0.205 miles



Exhibit N: HUC 14s on NJDEP Impaired Waters List



Impaired Waters Overall Assessment by HUC14 Subwatershed

-  Non Impacted
-  Insufficient Data Available
-  Moderate
-  Water Quality Impaired
-  Preservation Area
-  Municipal Boundaries

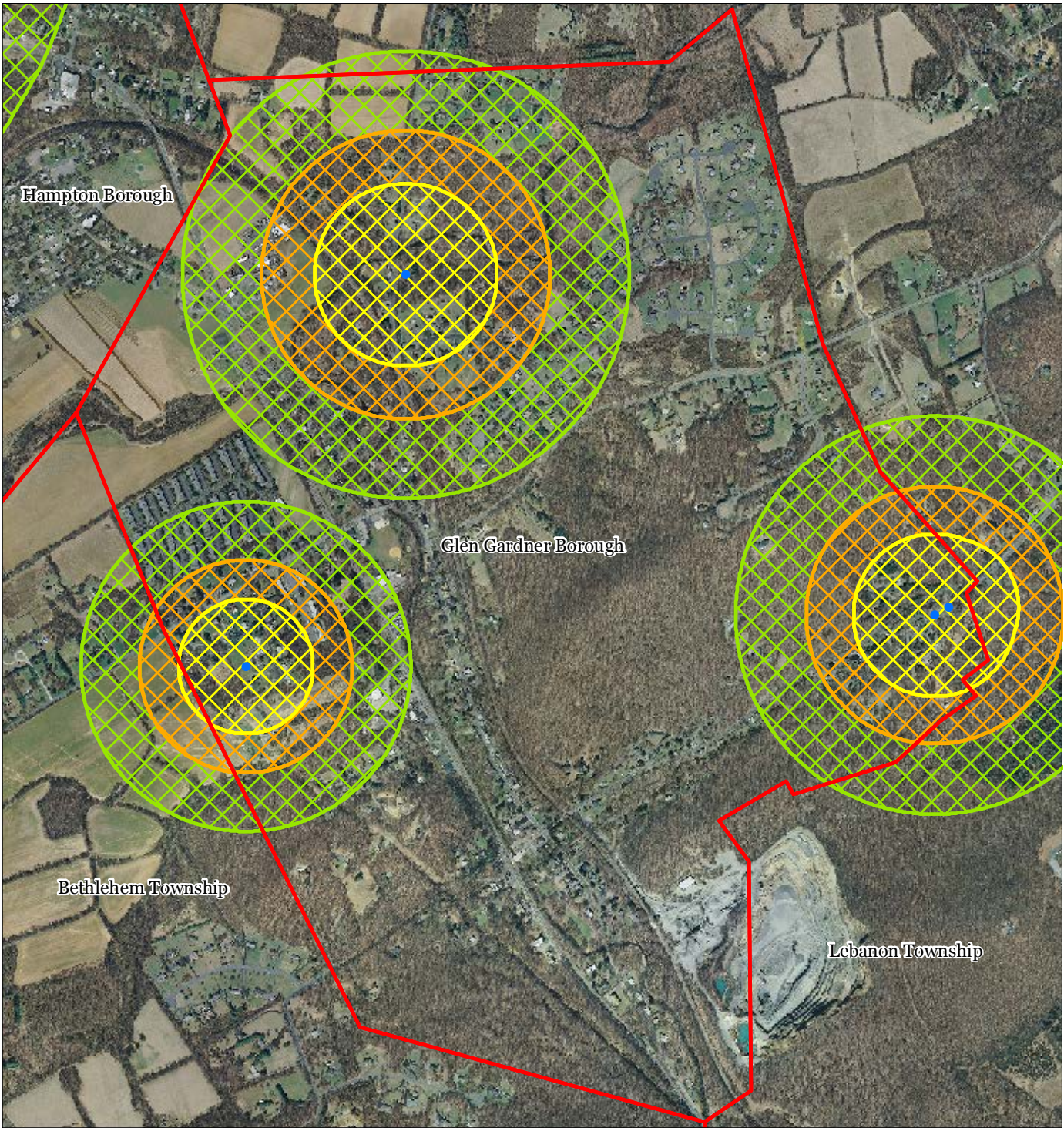
Glen Gardner Borough



1 inch = 0.205 miles





Exhibit O: Wellhead Protection Areas





- Public Community Wells
- Public Non-Community Wells

Glen Gardner Borough

Wellhead Protection Areas

-  2-Year Tier
-  5-Year Tier
-  12-Year Tier

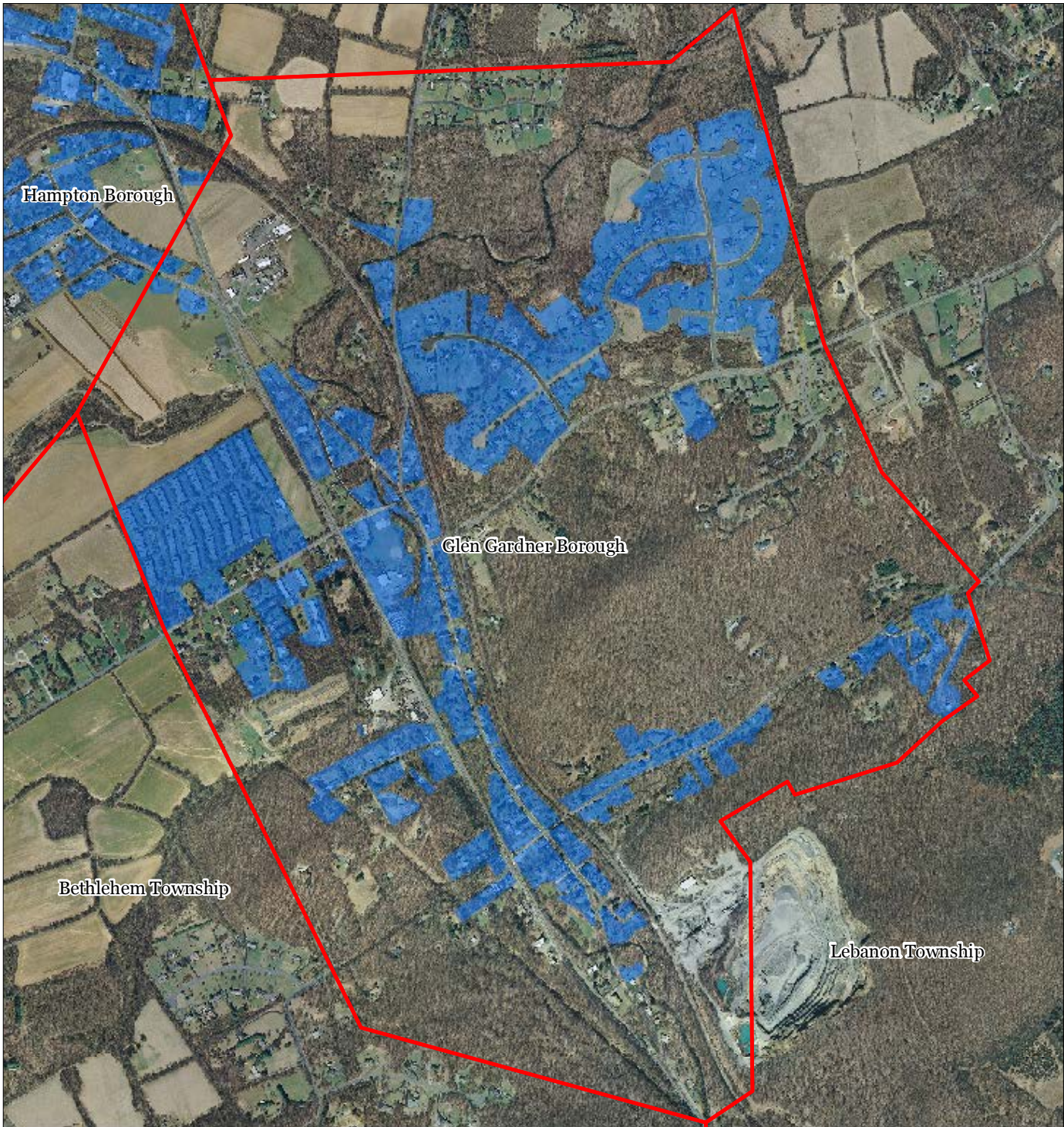
-  Preservation Area
-  Municipal Boundaries

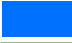




1 inch = 0.205 miles

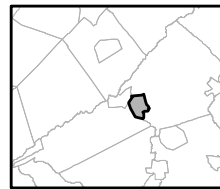


Exhibit P: Public Community Water Systems



-  Public Community Water Systems
-  Preservation Area
-  Municipal Boundaries

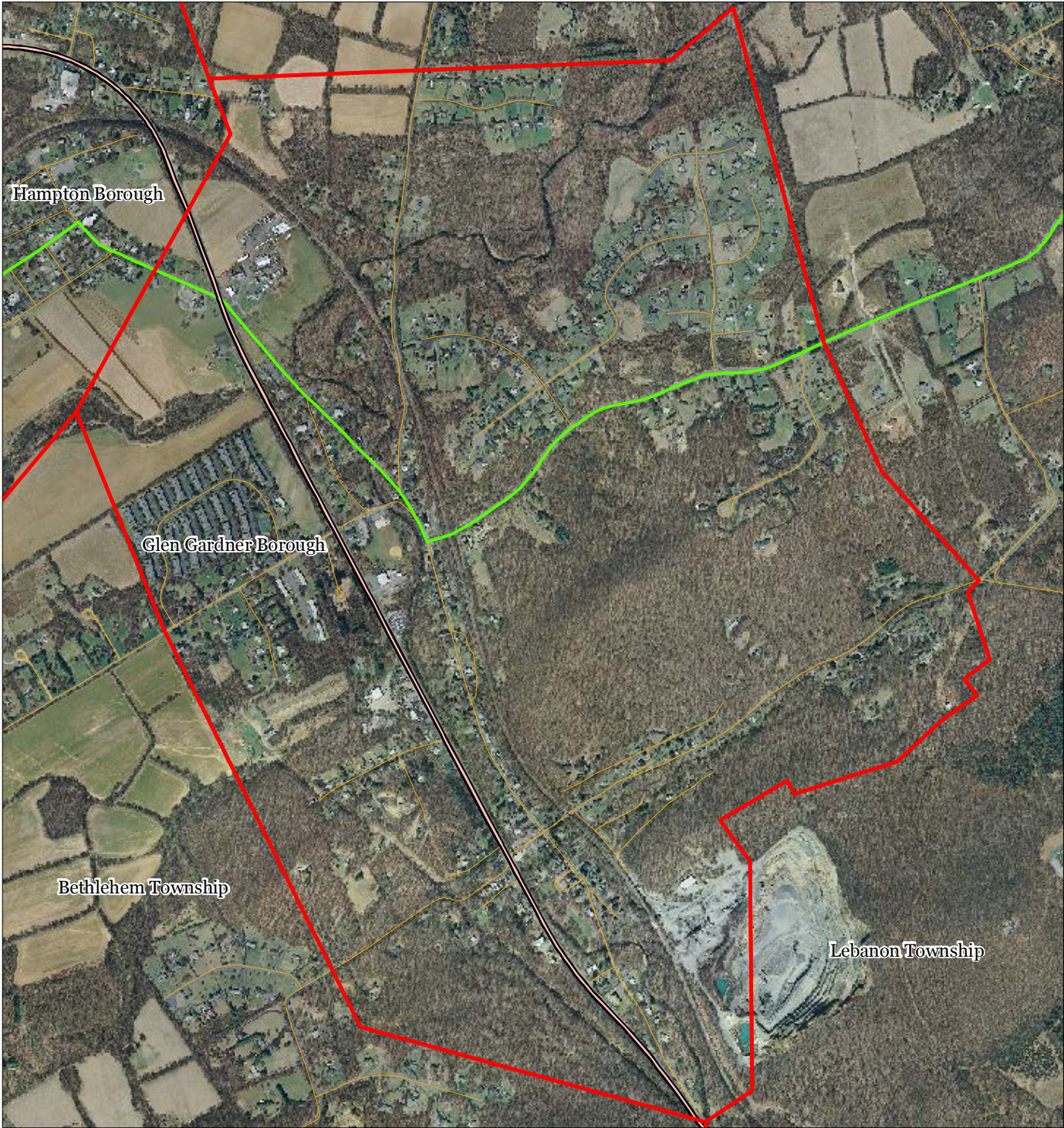
Glen Gardner Borough



1 inch = 0.205 miles



Exhibit Q: Highlands Roadway Network




Roadway Network


 Interstate Highways


 U.S. Routes

 State Routes

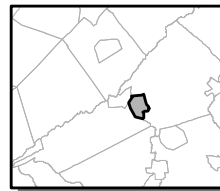
 County Routes

 Local Routes

 Preservation Area

 Municipal Boundaries

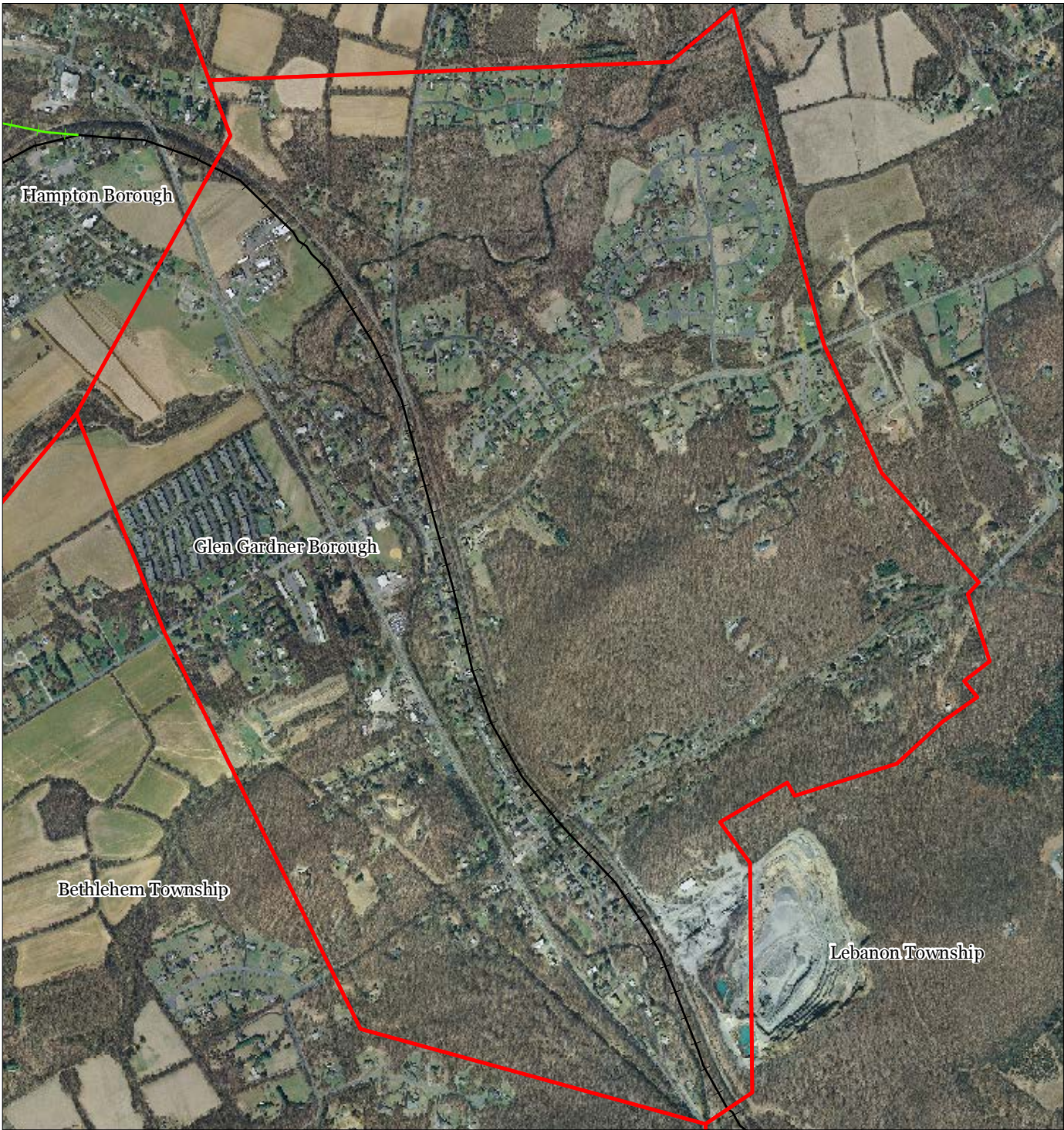
Glen Gardner Borough



1 inch = 0.205 miles

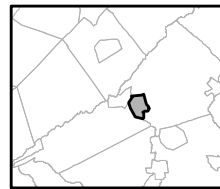
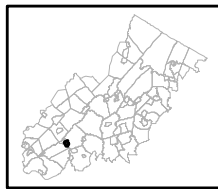


Exhibit R: Highlands Transit Network



- | | |
|--------------------------------|----------------------|
| Rail Network | Rail Stations |
| Boonton Line | Park and Ride Sites |
| Main Line & Bergen County Line | Private Bus Lines |
| Morris and Essex Line | NJ Transit Bus Lines |
| Raritan Valley Line | Airports |
| Freight Rail Lines | |
| Freight Rail Lines | |
| Abandoned Freight Rail | |

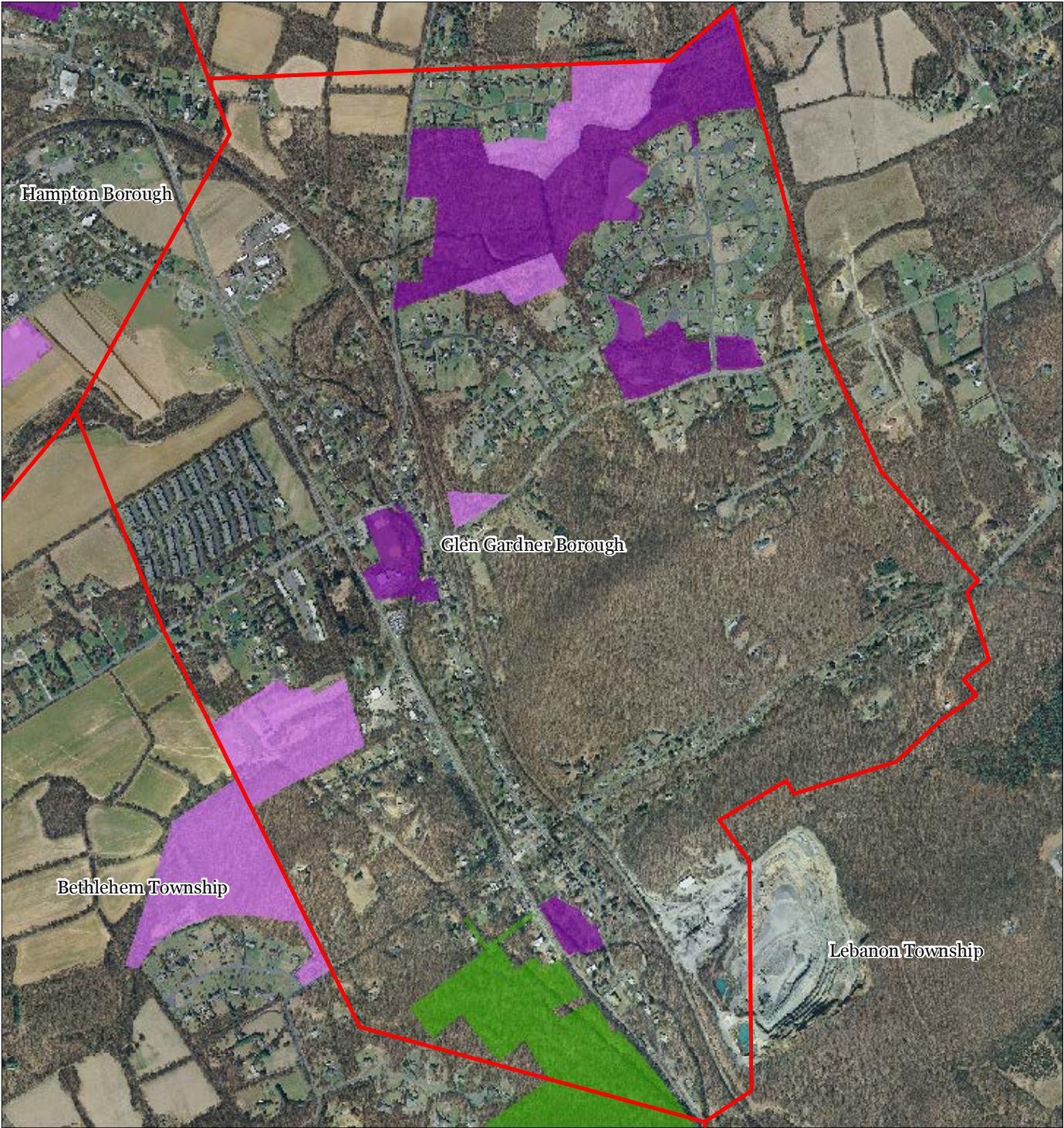
Glen Gardner Borough



1 inch = 0.205 miles



Exhibit S: Preserved Lands



- | | |
|---|-------------------------------|
| Preserved Lands | Conservation Easements |
| Federal Open Space | Green Acres |
| State Open Space | SADC Easements |
| County Open Space | SADC Final |
| Municipal Open Space | SADC Preserved |
| Non-Profit/Private Open Space | Municipal Boundaries |
| Water Supply Watershed Lands | Preservation Area |
| Preserved Farmland | |
| Highlands Transfer of Development Lands | |

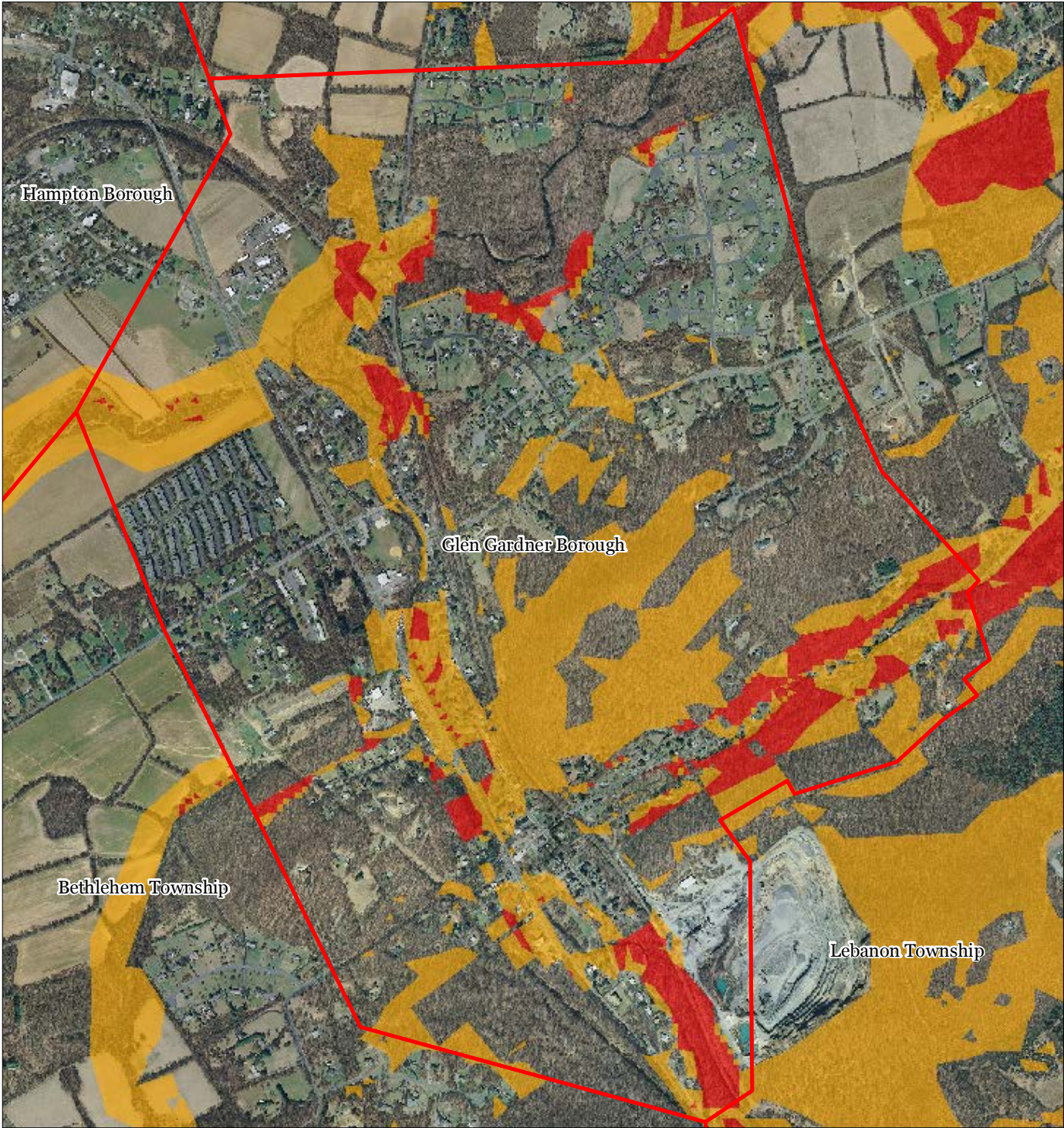
Glen Gardner Borough







1 inch = 0.205 miles



Exhibit T: Highlands Conservation Priority Area



Conservation Priority Area

-  Moderate
-  High
-  Preservation Area
-  Municipal Boundaries

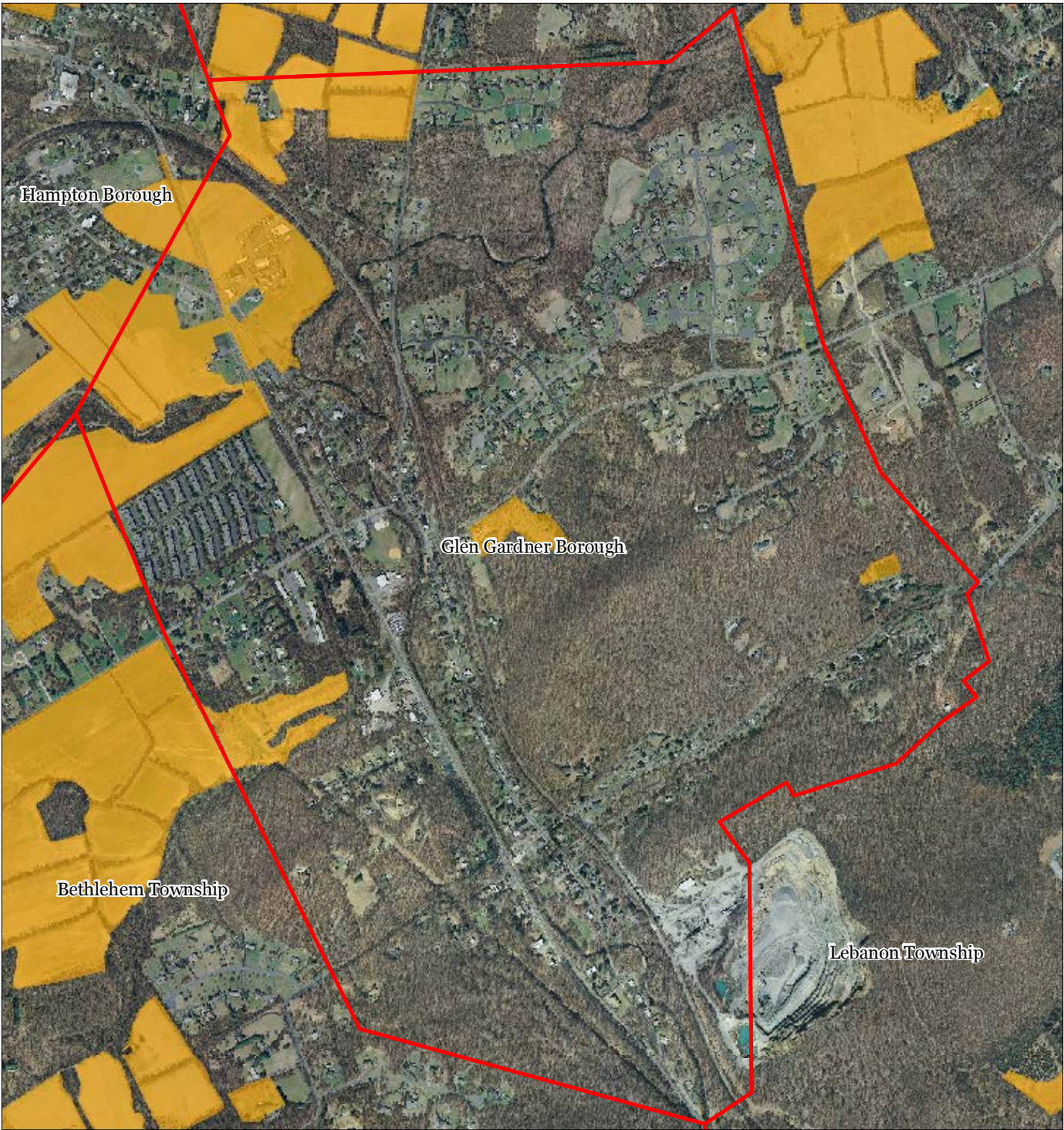
Glen Gardner Borough



1 inch = 0.205 miles



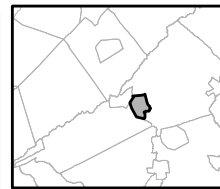
Exhibit U: Preserved Farms, SADC Easements, All Agricultural Uses



SADC Easements

-  *SADC Final*
-  *SADC Preserved*
-  Preserved Farmland
-  Agriculture Uses
-  Preservation Area
-  Municipal Boundaries

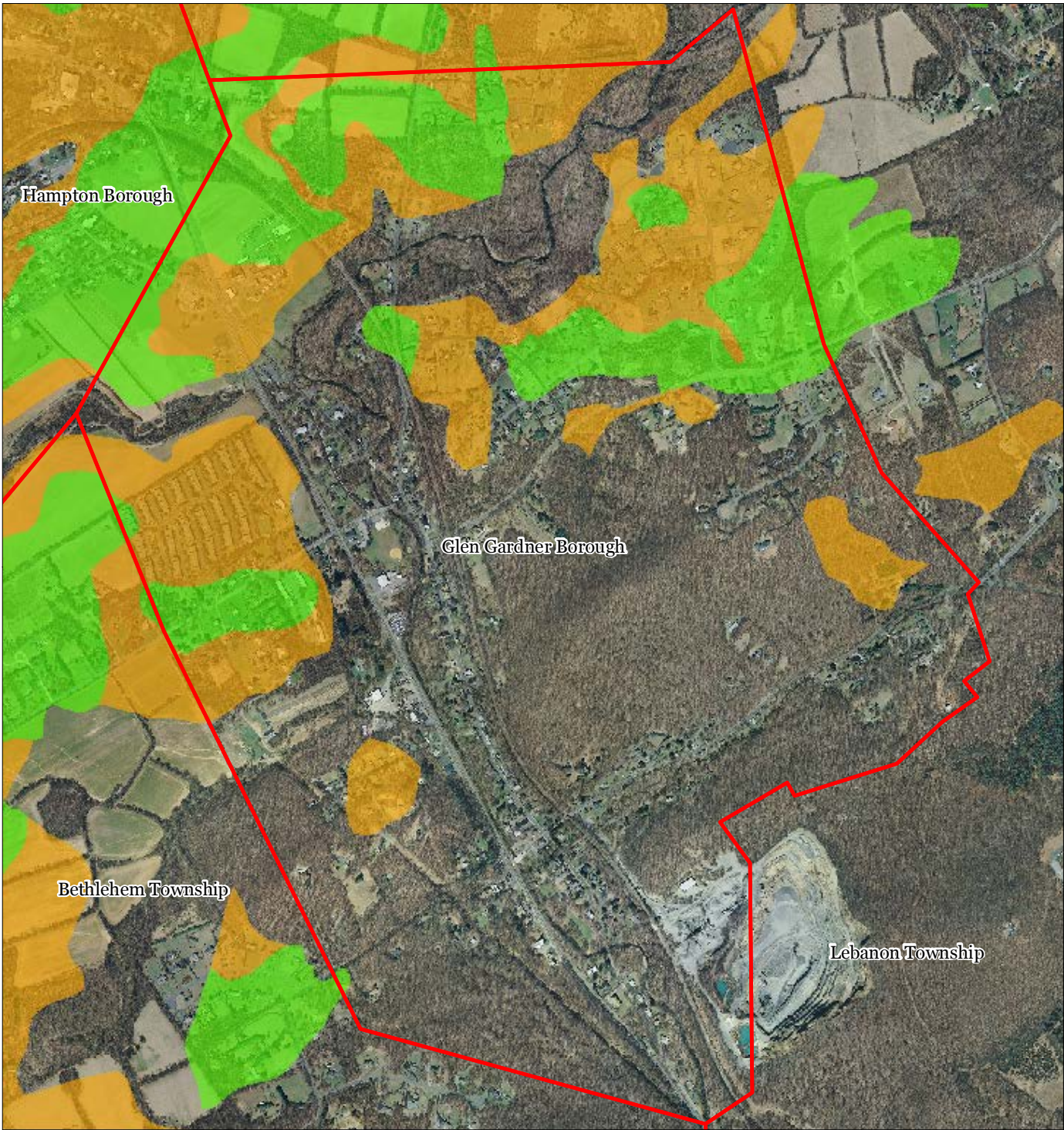
Glen Gardner Borough



1 inch = 0.205 miles



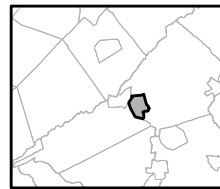
Exhibit V: Important Farmland Soils



Important Farmland Soils

-  Prime Farmland
-  Farmland of Local Importance
-  Farmland of Statewide Importance
-  Farmland of Unique Importance
-  Preservation Area
-  Municipal Boundaries

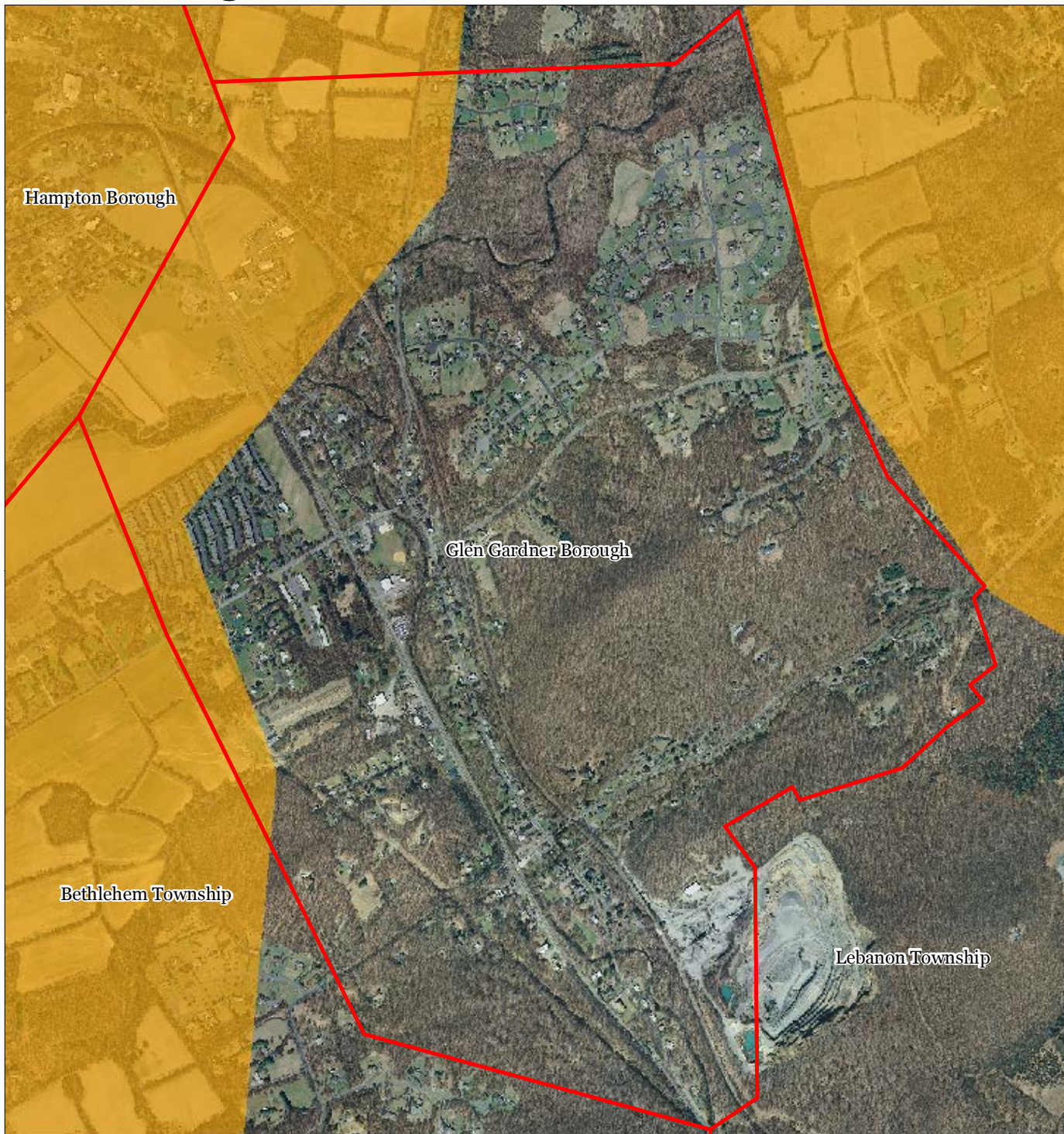
Glen Gardner Borough






1 inch = 0.205 miles

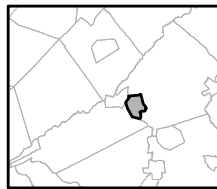
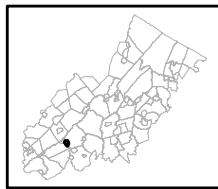


Exhibit W: Agricultural Resource Area



-  Agricultural Resource Area
-  Preservation Area
-  Municipal Boundaries

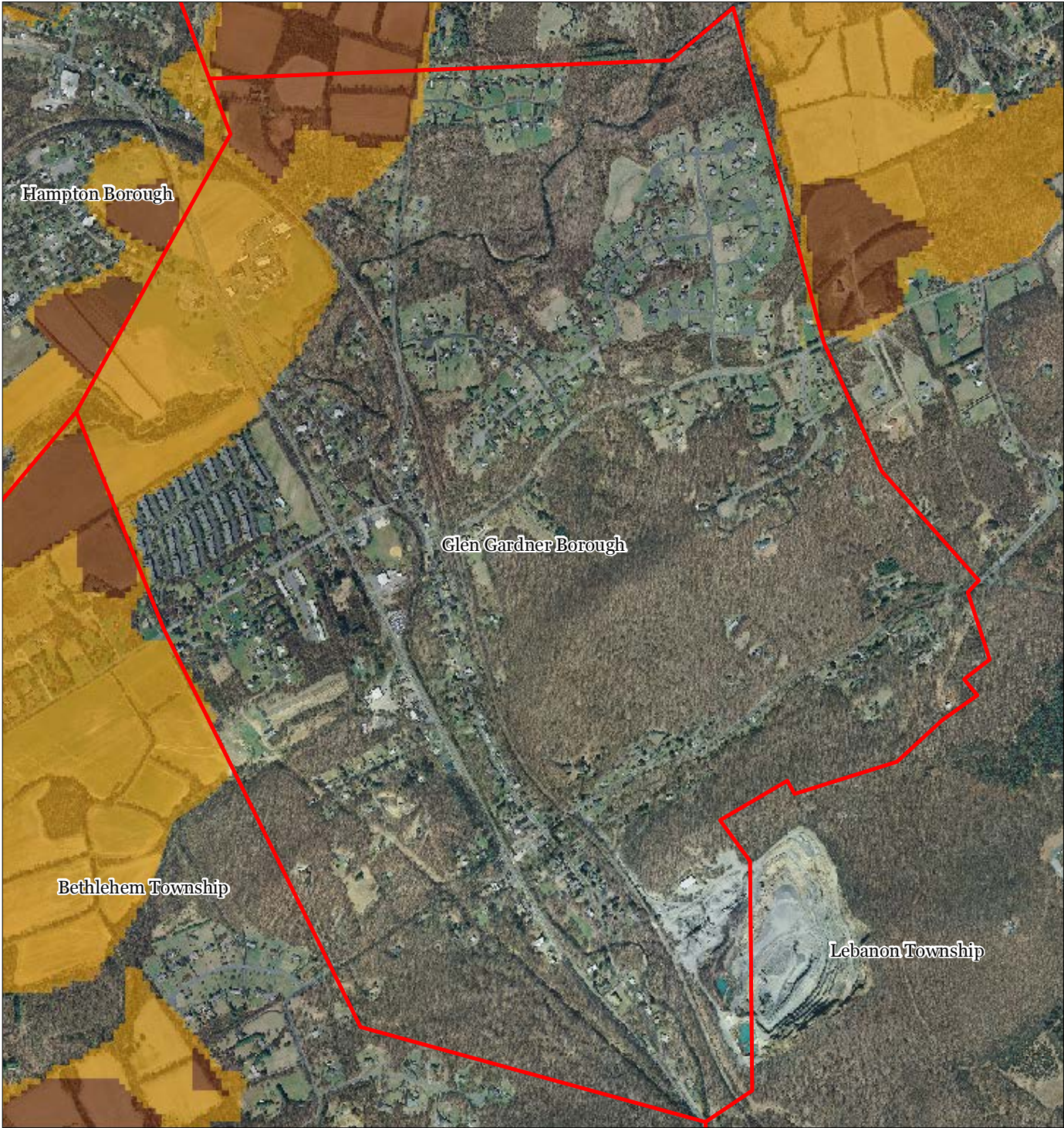
Glen Gardner Borough







1 inch = 0.205 miles



Exhibit X: Agricultural Priority Area



Agricultural Priority Area

-  Moderate
-  High
-  Preservation Area
-  Municipal Boundaries

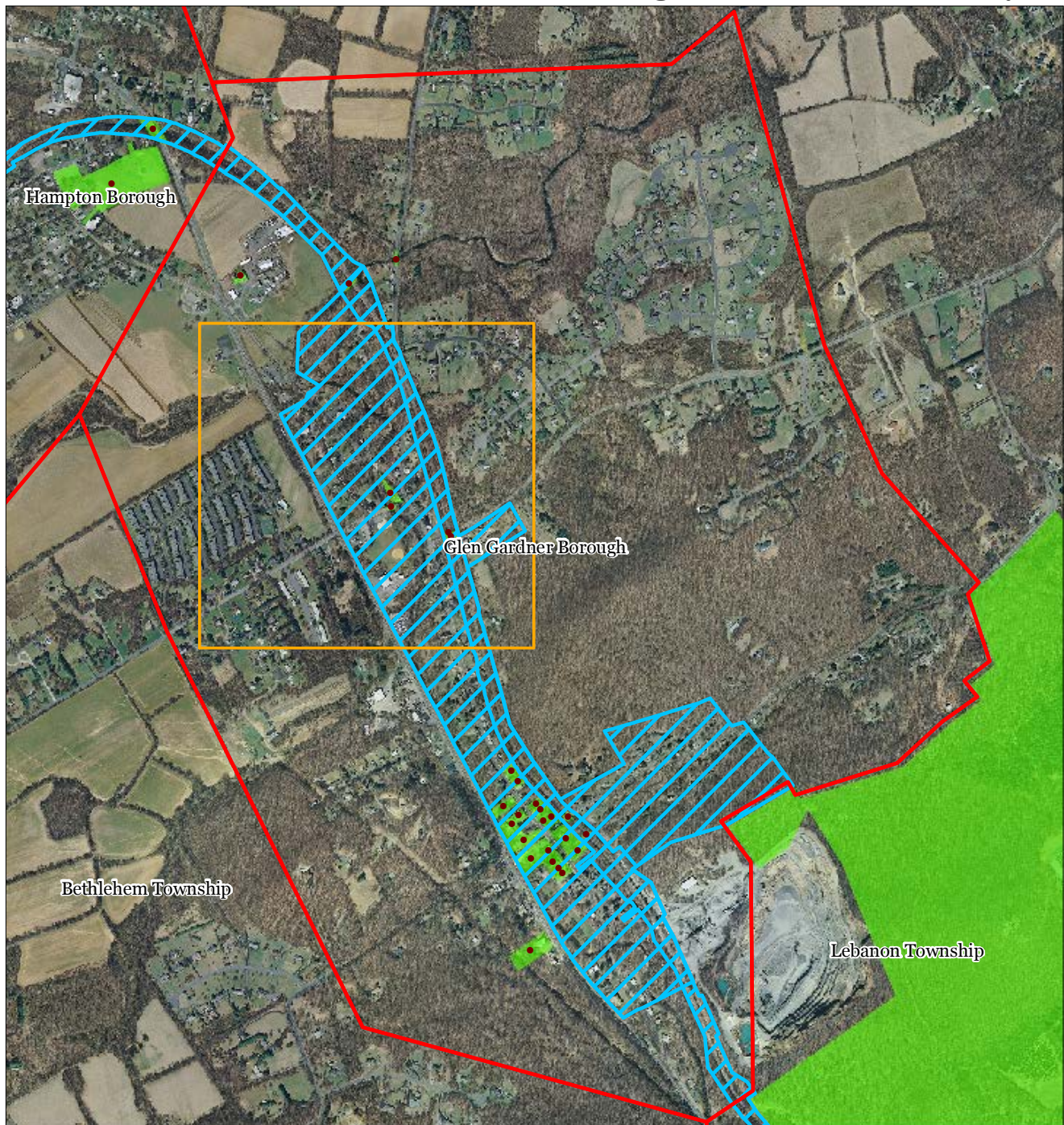
Glen Gardner Borough



1 inch = 0.205 miles

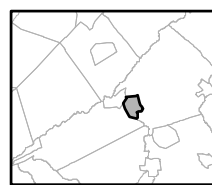
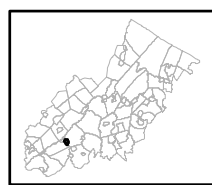


Exhibit Y: Historic, Cultural, and Archaeological Resources Inventory



-  Preservation Area
-  Municipal Boundaries
-  Archaeological Grids (1 sqmi)
-  NJ Historic Districts
-  Historic Property Points
-  Historic Property Polygons

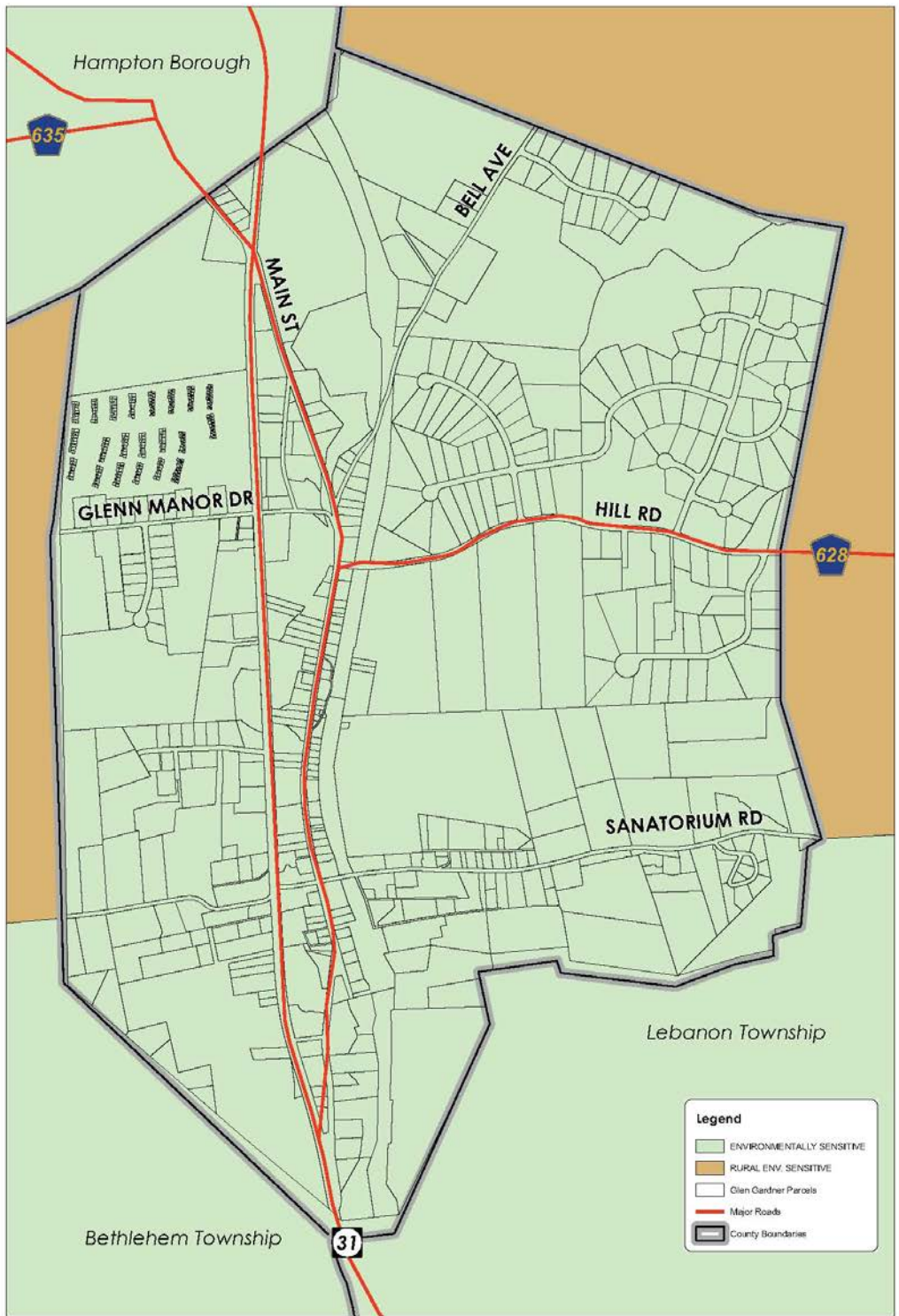
Glen Gardner Borough



1 inch = 0.205 miles



Exhibit Z: 2001 State Plan Policy Map



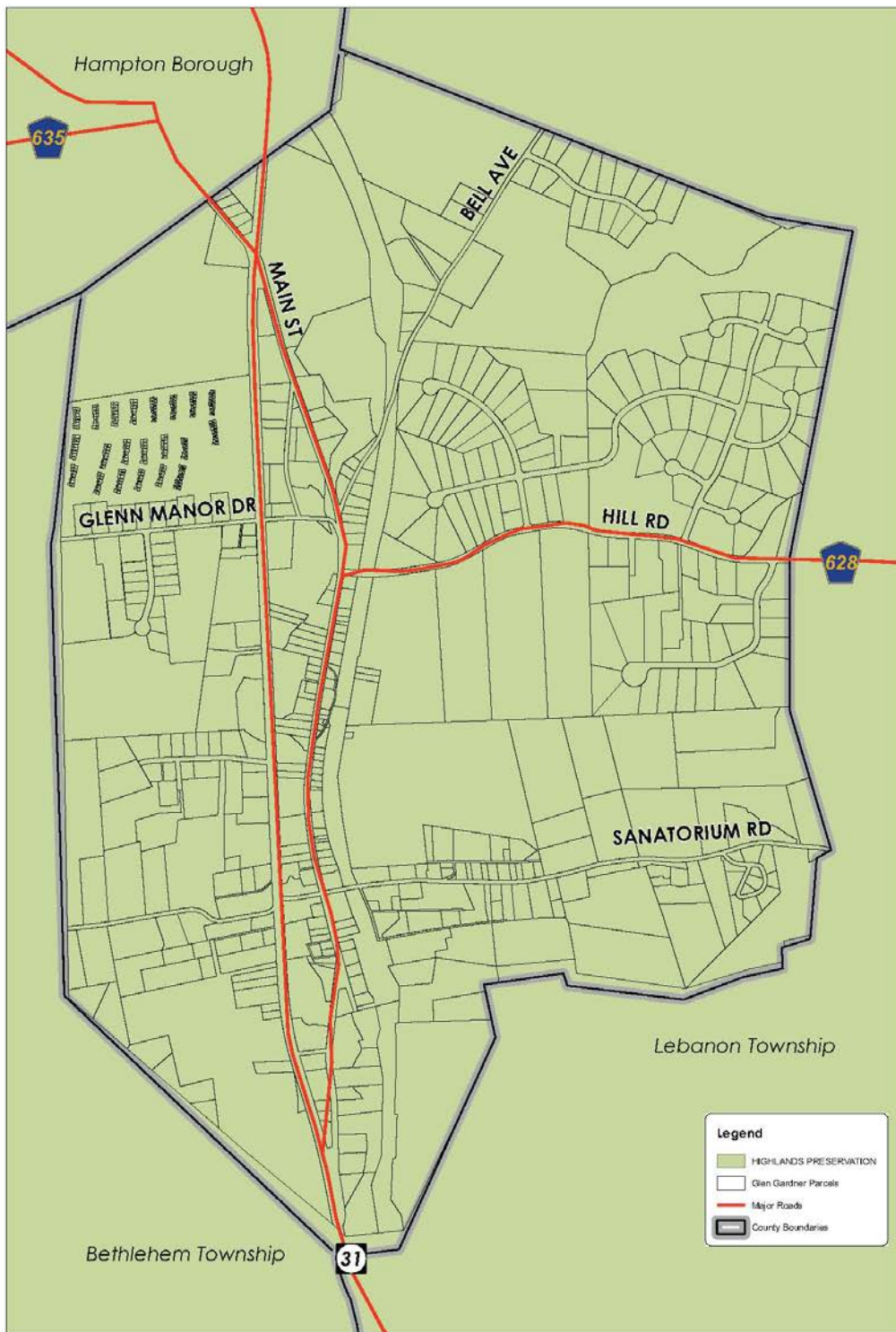
GLEN GARDNER

updated: JULY 20, 2009

2001 State Plan Policy Map



Exhibit AA: 2009 Draft Final State Plan Policy Map

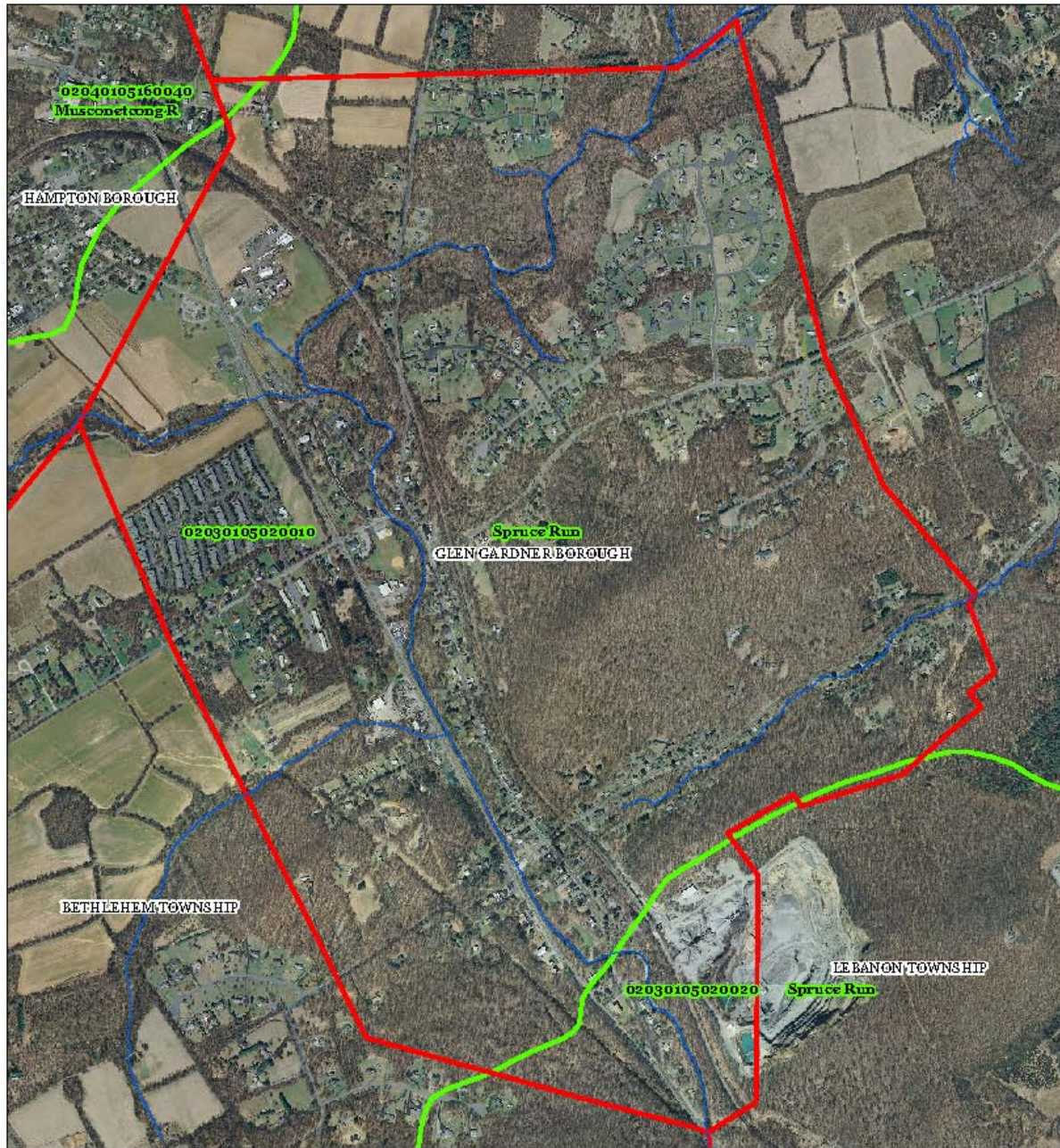






GLEN GARDNER
2009 Draft Final State Plan Policy Map

updated: JULY 20, 2009

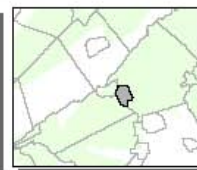
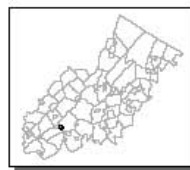


Exhibit BB: HUC 14 Subwatersheds



-  Subwatersheds: Hydrologic Unit Code 14 (HUC14)
-  Stream Centerlines
-  Preservation Area
-  Municipal Boundaries

GLEN GARDNER BOROUGH



1 inch = 0.205 miles

