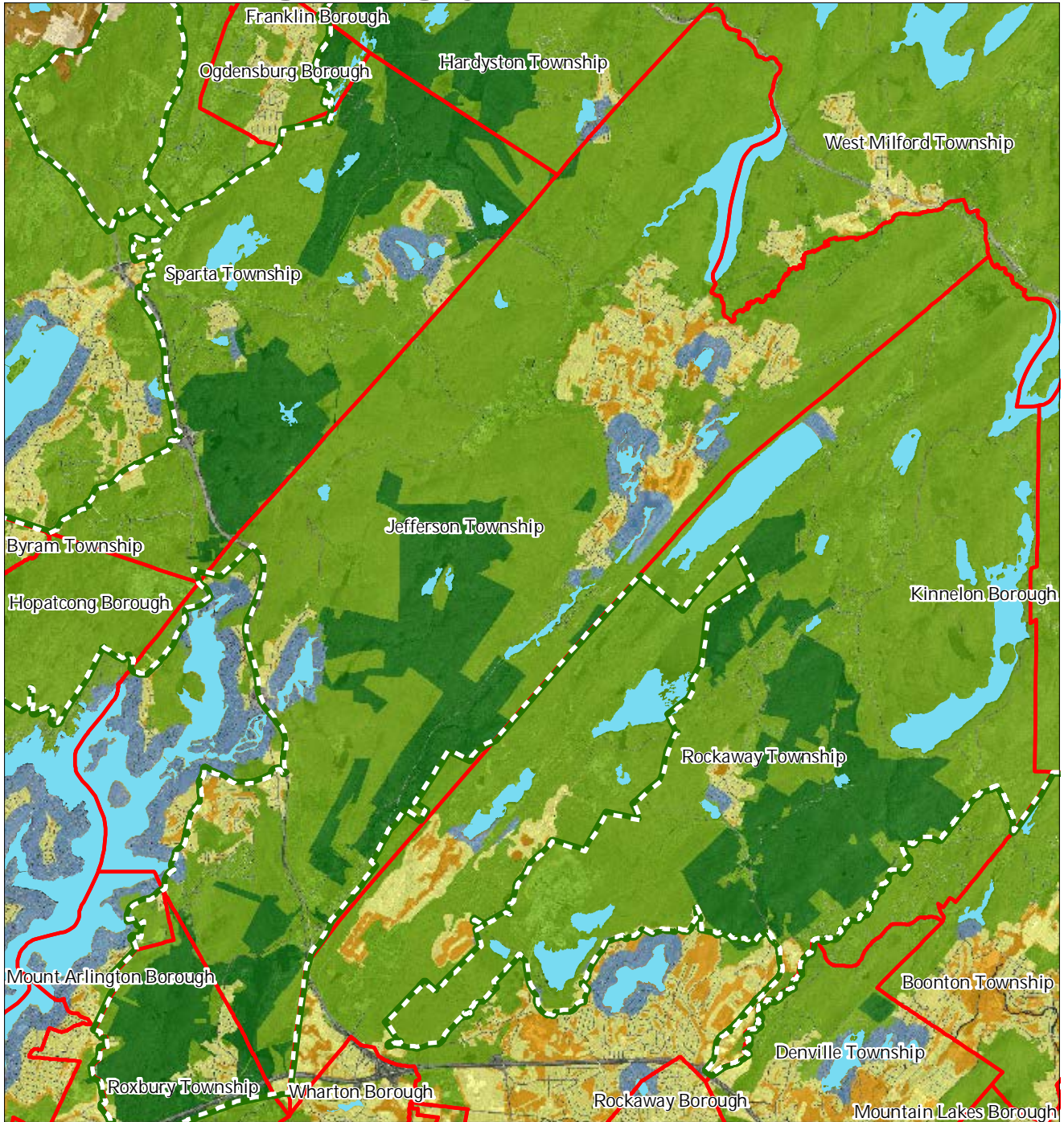


**Township of Jefferson  
Highlands Preservation Area Master Plan Element**

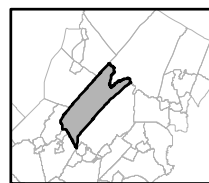
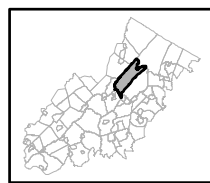
**Exhibit A: Highlands Preservation Area Master Plan Element**



**Regional Master Plan Overlay Zone Designation**

- |                 |  |                             |
|-----------------|--|-----------------------------|
| <b>Zone</b>     | Protection                                     | Lakes Greater Than 10 acres |
|                 | Conservation                                   | Preservation Area           |
|                 | Existing Community                             | Municipal Boundaries        |
| <b>Sub-Zone</b> | Existing Community Environmentally Constrained |                             |
|                 | Conservation Environmentally Constrained       |                             |
|                 | Lake Community                                 |                             |
|                 | Wildlife Management                            |                             |

**Jefferson Township**



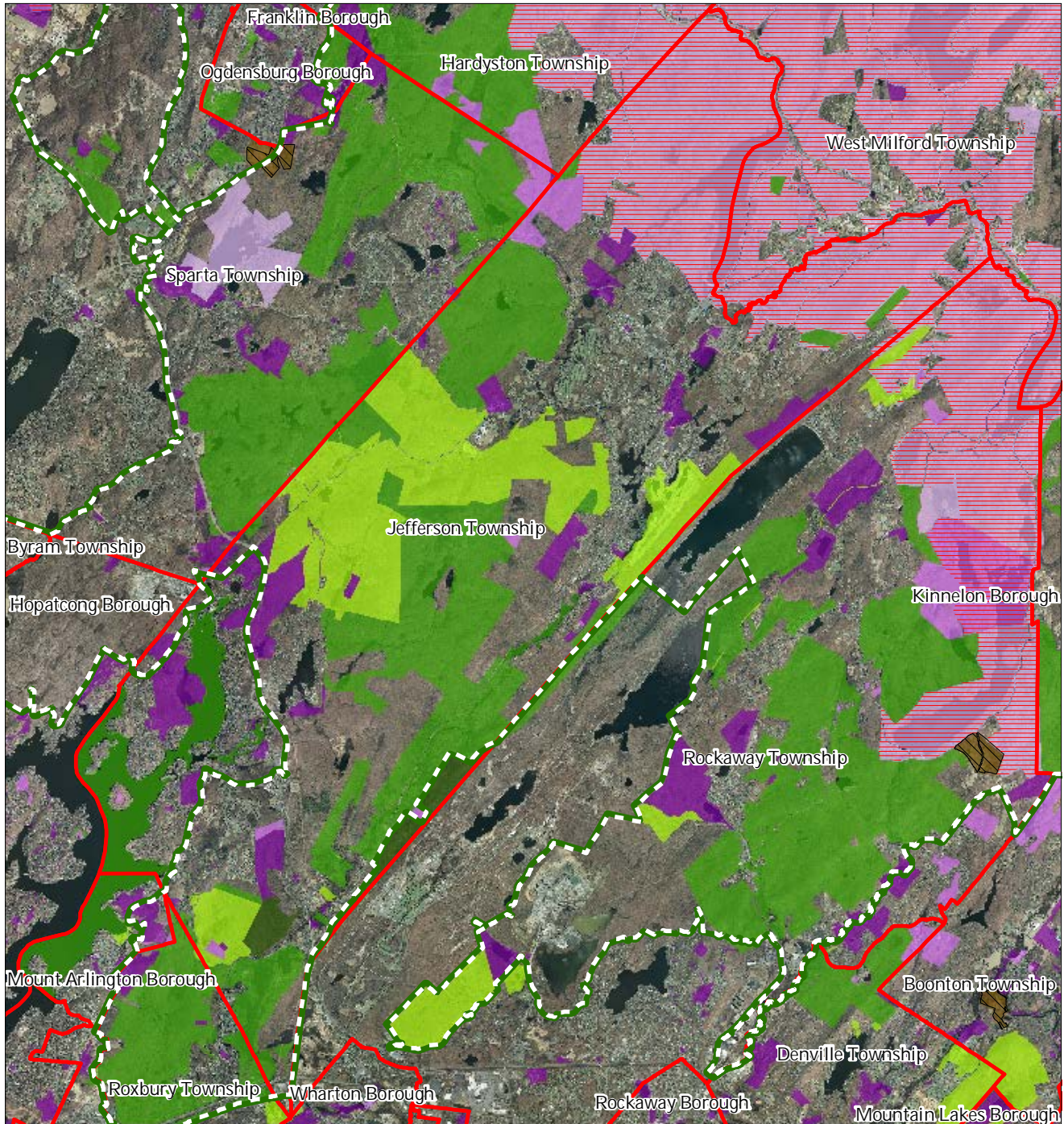
1 inch = 1.5 miles





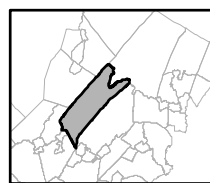
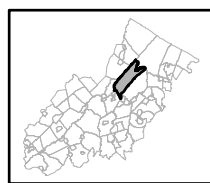
**Township of Jefferson  
Highlands Preservation Area Master Plan Element**

**Exhibit B: Preserved Lands**



- |   |                               |
|---|-------------------------------|
| <b>Preserved Lands</b>                  | <b>Conservation Easements</b> |
| Federal Open Space                      | Green Acres                   |
| State Open Space                        | <b>SADC Easements</b>         |
| County Open Space                       | SADC Final                    |
| Municipal Open Space                    | SADC Preserved                |
| Non-Profit/Private Open Space           | Municipal Boundaries          |
| Water Supply Watershed Lands            | Preservation Area             |
| Preserved Farmland                      |                               |
| Highlands Transfer of Development Lands |                               |

**Jefferson Township**



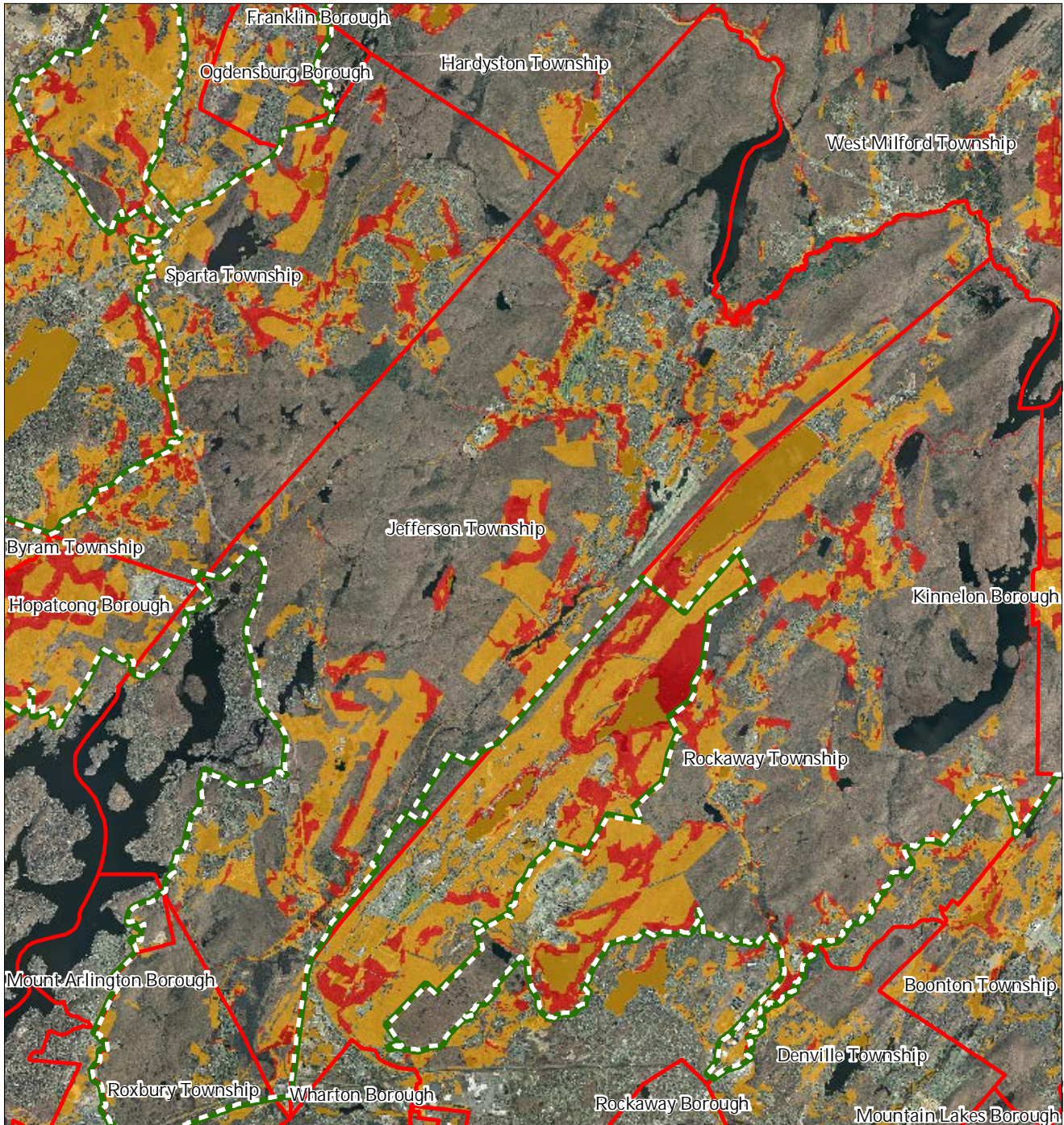
1 inch = 1.5 miles





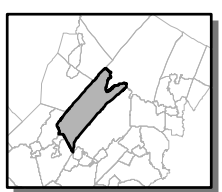
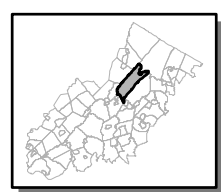
**Township of Jefferson  
Highlands Preservation Area Master Plan Element**

**Exhibit C: Highlands Conservation Priority Areas**



- Conservation Priority Area
- Moderate
  - High
  - Preservation Area
  - Municipal Boundaries

**Jefferson Township**



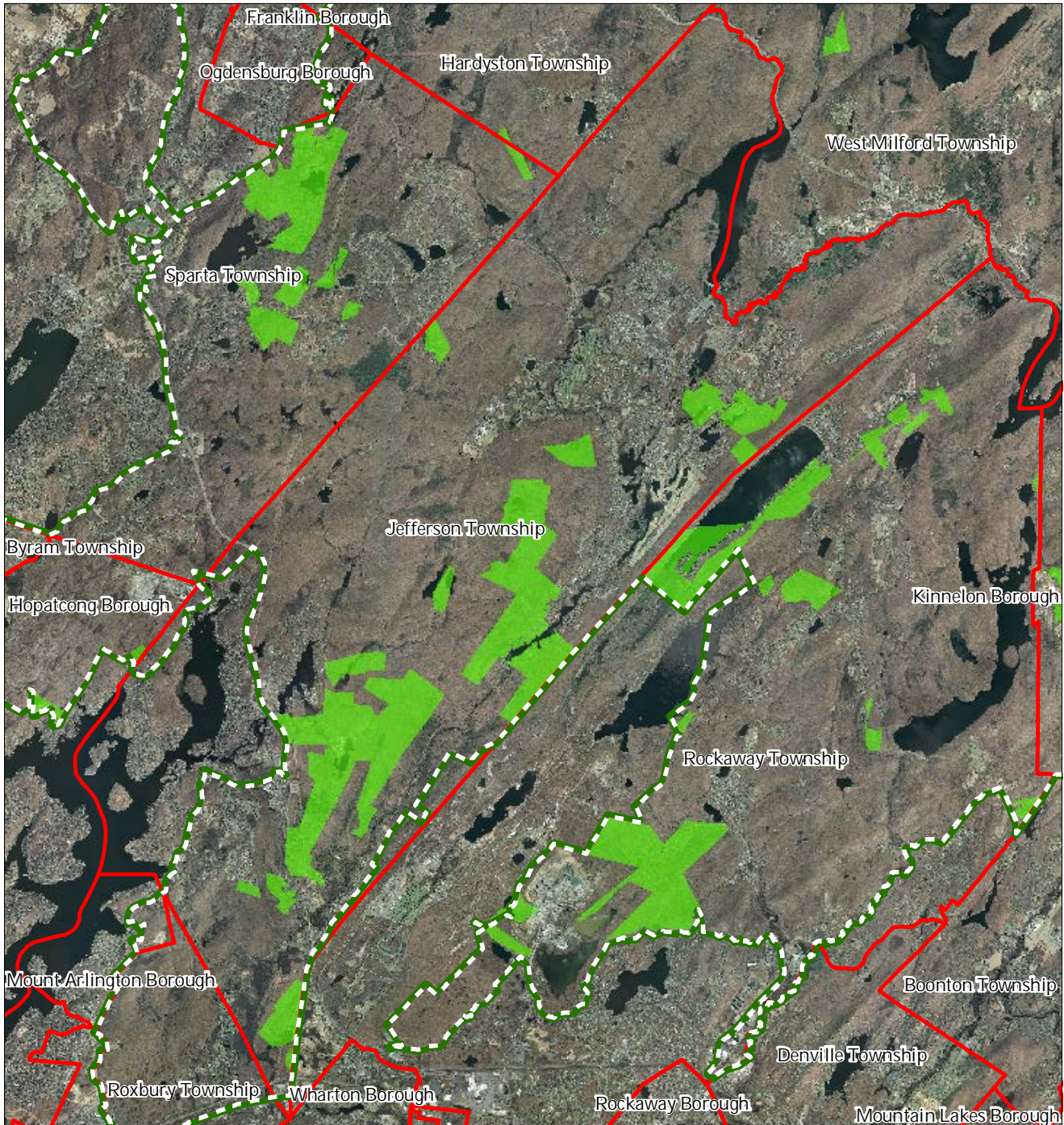
1 inch = 1.5 miles








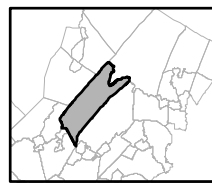
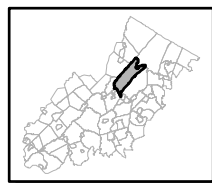
Township of Jefferson  
Highlands Preservation Area Master Plan Element

Exhibit D: Highlands Special Environmental Zone



-  Special Environmental Zones
-  Preservation Area Municipal
-  Boundaries

Jefferson Township



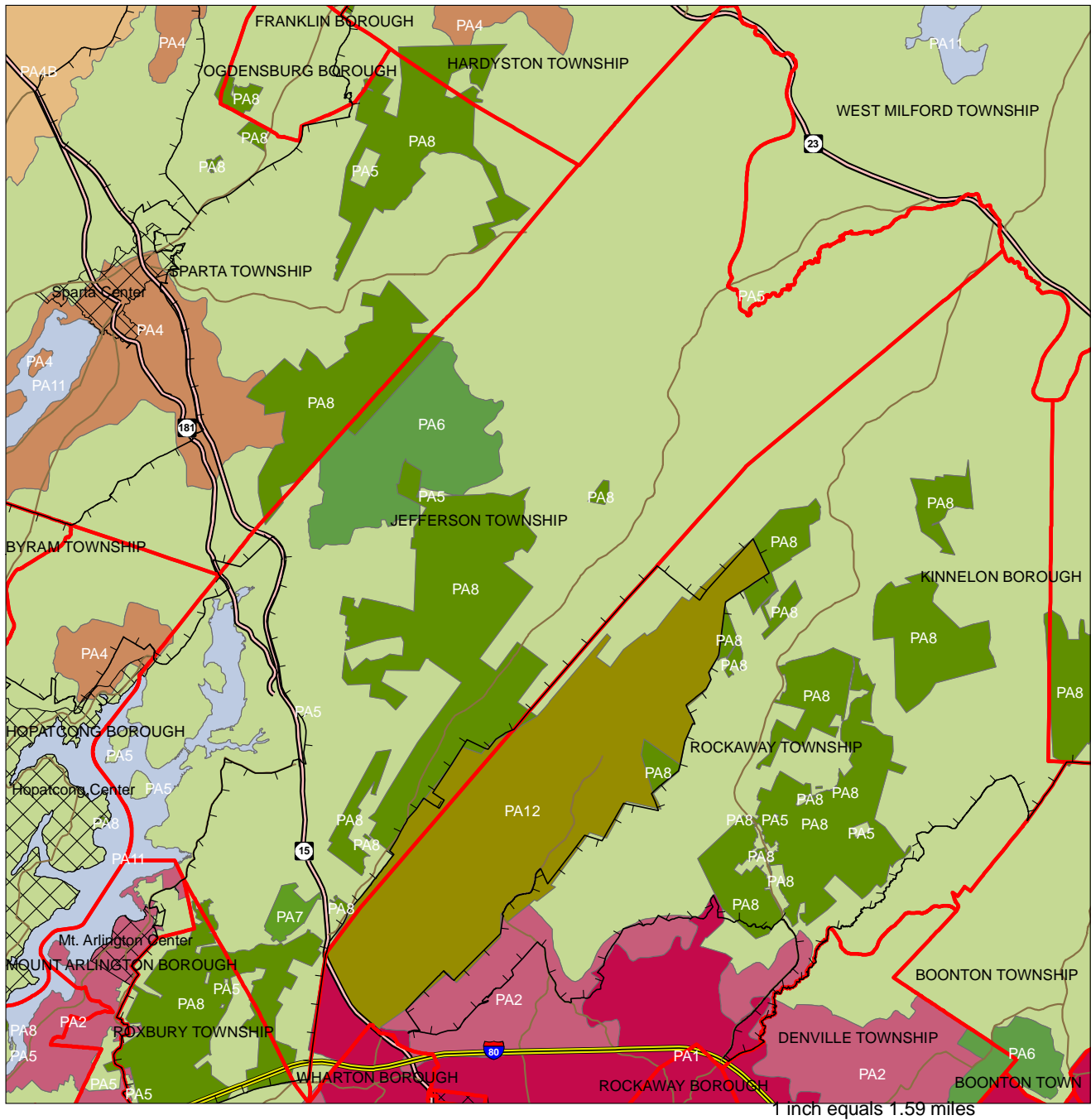
1 inch = 1.5 miles





**Township of Jefferson  
Highlands Preservation Area Master Plan Element**

# Exhibit E: State Planning Areas



**Legend**

- |                      |  |                                 |
|----------------------|--|---------------------------------|
| Preservation Area    | <b>State Planning Areas*</b>           | ENVIRONMENTALLY SENSITIVE (PA5) |
| Municipal Boundaries | METROPOLITAN (PA1)                     | PARK (PA6)                      |
| Interstate Highways  | SUBURBAN (PA2)                         | FEDERAL PARK (PA7)              |
| U.S. Routes          | FRINGE (PA3)                           | STATE PARK (PA8)                |
| State Routes         | RURAL (PA4)                            | WATER (PA11)                    |
| County Routes        | RURAL ENVIRONMENTALLY SENSITIVE (PA42) | MILITARY (PA12)                 |
| Designated Centers   |  |                                 |

