

Public Hearing

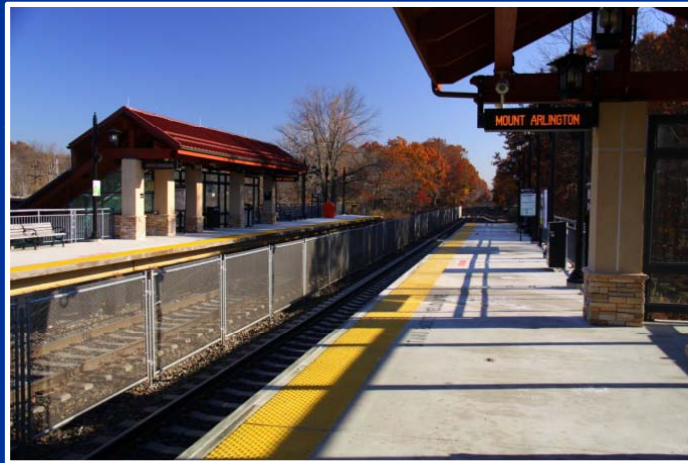
Mount Arlington Borough Petition for Plan Conformance

Introduction to Mount Arlington Borough



Mount Arlington Borough

Background Statistics



- Incorporated: 1890
- Population 2010: 5,713
- Land Area: 1,795 acres/
2.8 sq. mi.
- Preserved Lands: 562 acres (31%)
- Total Forest: 603 acres (34%)

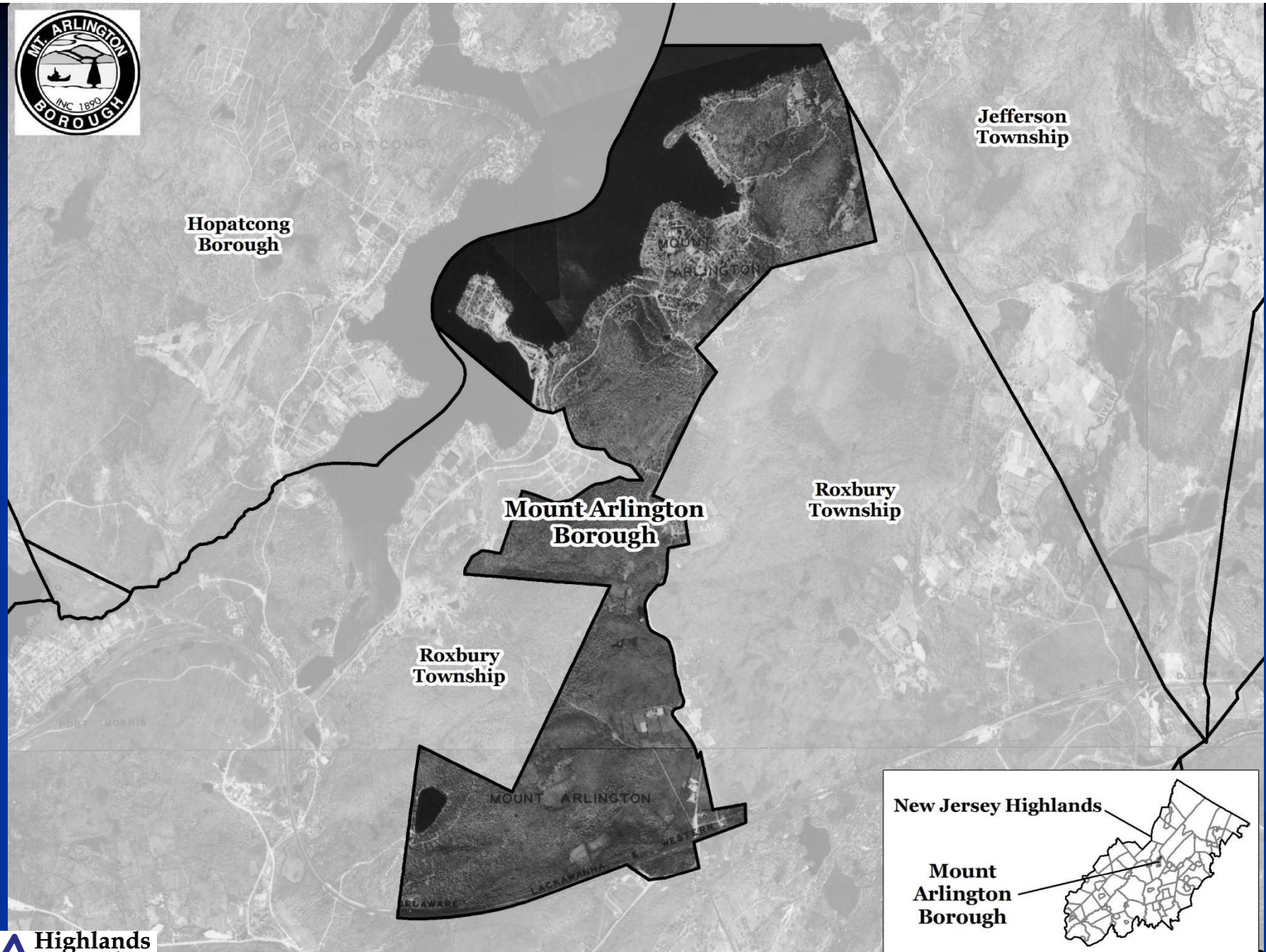
Mount Arlington Borough

Significant Highlands Statistics

- Planning Area Lands: 1,663 acres – 93%
- Preservation Area Lands: 132 acres – 7%

- Existing Community Zone: 1,130 acres – 63% (Roads 11%)
- Protection Zone: 472 acres – 26%

- Highlands Open Water Protection: 1,013 acres – 57%
- Forest Resource Area: 964 acres – 54%
- Critical Wildlife Habitat: 471 acres – 26%



Mount Arlington Borough - 1930

Mount Arlington Borough



Background Statistics – Land Use

NJDEP Land Use/Land Cover (2007)	Plan	Pres	Percent
Residential (Single & Multi Family)	526	15	30.1%
Commercial (Retail)	72	3	4.2%
Industrial & Transportation & Utilities	77	0	4.3%
Agriculture (Crops & Plantations)	2	0	0.1%
Recreational Lands (Public & Private)	42	0	2.3%
Other Urban or Built-Up Land	80	11	5.1%
Subtotal Developed Lands	799	29	46.1%
Mixed Forest	388	94	26.9%
Shrub & Scrub	13	0	0.7%
Mixed Wetlands	32	9	2.3%
Barren Lands	20	0	1.1%
Water	410	0	22.9%
Subtotal Natural Lands	864	103	53.9%
Total	1,663	132	100.0%

Preservation Area

- Mount Arlington's Petition is for the Preservation Area which encompasses approximately 132 acres (7% of the municipality). The majority of the Preservation Area is either already developed or is owned and preserved by the Borough.
- The Preservation Area consists of preserved municipal open space, a former landfill that is the subject of a Highlands Redevelopment Area study, an existing public school, developed residential properties (likely to be exempt from the Highlands Act), and approximately 12 acres of developable land divided among six parcels, the largest of which is slightly more than 5 acres in area.



**Hopatcong
Borough**

**Jefferson
Township**

**Mount Arlington
Borough**


**Roxbury
Township**

**Roxbury
Township**

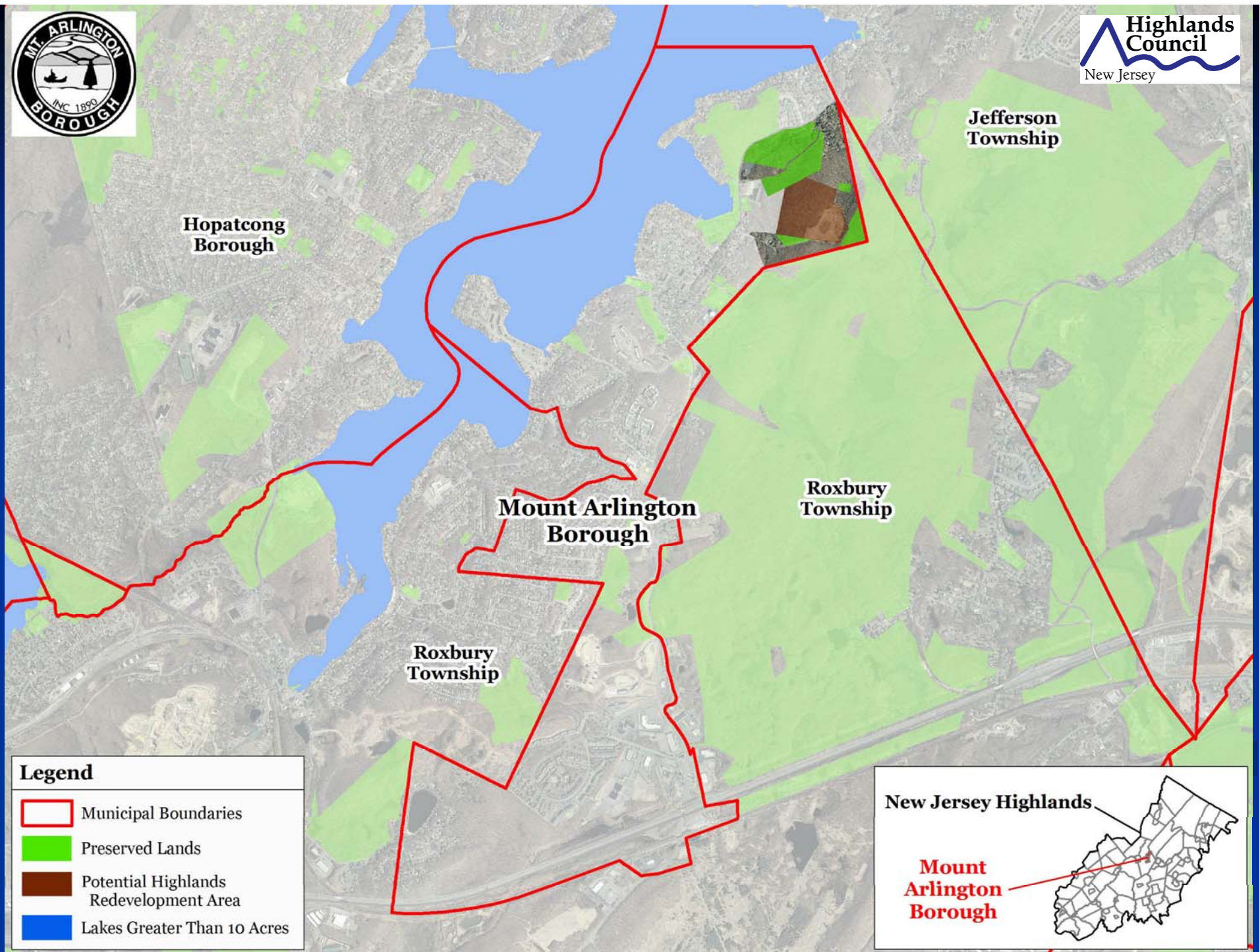
Legend




-  Municipal Boundaries
-  Parcel Boundaries
-  Highlands Planning Area
-  Highlands Preservation Area

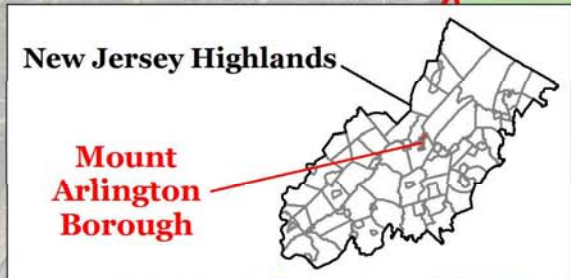
New Jersey Highlands



**Mount
Arlington
Borough**



Legend	
	Municipal Boundaries
	Preserved Lands
	Potential Highlands Redevelopment Area
	Lakes Greater Than 10 Acres



New Jersey Highlands

**Mount
Arlington
Borough**

Plan Conformance Modules

Petition Requirements	RMP Consistent	Specific Issues
Modules 1-2 Municipal Build-Out Report	X	None
Module 3 Housing Element/Fair Share Plan	Deferred	None
Module 4 Environmental Resource Inventory	X	None
Module 5 Highlands Element	X	None
Module 6 Land Use Ordinance	Waived	Due to Preservation Area Lands
Module 7 Petition for Plan Conformance	X	None

Highlands Land Use Ordinance

- A waiver is appropriate for the Module 6 Highlands Land Use Ordinance due to the unique circumstances of Mount Arlington Borough's Preservation Area.
- There will be very limited proposals for development in this area that do not qualify for Highlands Act exemptions. Therefore, use of the complete model Highlands Land Use Ordinance is not justified.
- To address the possibility of such development, the Highlands Council will condition approval of the Borough's Petition upon adoption of a "Highlands Preservation Area Checklist Ordinance." In this manner, we will address the requirements of the Highlands Act at minimal public expense and limit the Borough's future administrative obligations.

Mount Arlington Borough's Petition for Plan Conformance Public Comments Received

- The public comment period on Mount Arlington's Petition opened October 28, 2011 and closed November 14, 2011.

Public Comments were received from:

- **Erica Van Auken**, on behalf of the New Jersey Highlands Coalition (supported Petition and appreciates the Borough's initiative to implement the Green Building/Sustainability/Alternative Energy Plan.)

Recommendation

Mount Arlington Borough's Petition for Plan Conformance

Staff Recommendation: APPROVE (LISTING MAJOR CONDITIONS)

- Adoption of Checklist Ordinance
- Adoption of Completed Highlands Environmental Resource Inventory and Master Plan Element
- Compliance with Fair Housing Act
- Water Use and Conservation Management Plan
- Habitat Conservation and Management Plan
- Sustainable Economic Development Master Plan Element
- Lake Restoration Plan
- Green Building & Environmental Sustainability Master Plan Element

Council Deliberation



Mount Arlington Borough