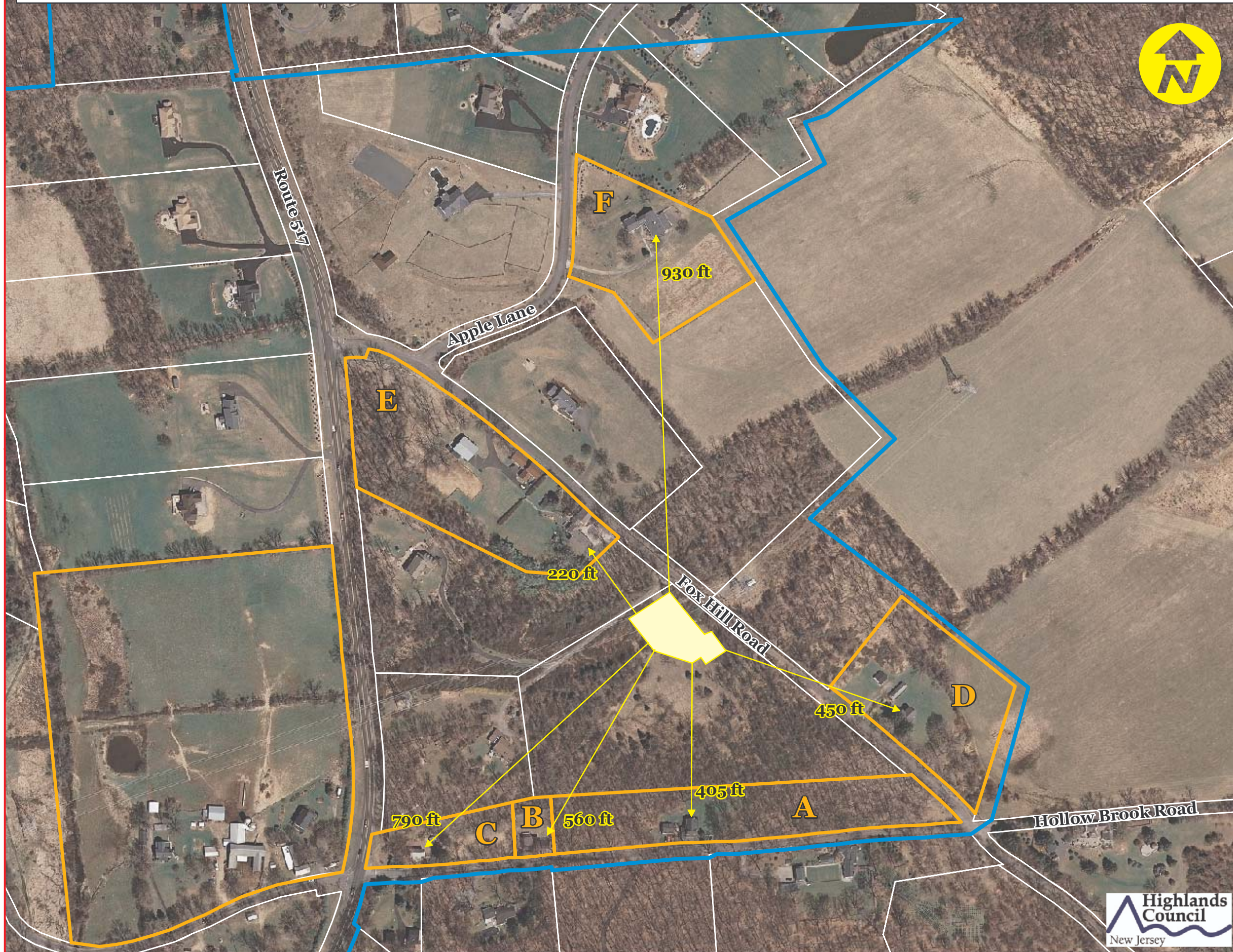


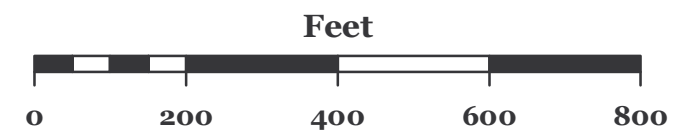
**Figure 1: JCP&L Proposed Califon Substation - Proximity to Contributing Historic Properties**



- Proposed Substation Footprint
- Contributing Historic Properties
- Lower Fairmont Historic District
- Parcel Boundaries
- 220 ft  Distance from Substation to Contributing Historic Structure

**Closest Contributing Historic Properties**

- 5 Hollow Brook Road.....(A)
- 3 Hollow Brook Road.....(B)
- 1 Hollow Brook Road.....(C)
- 9 Fox Hill Road.....(D)
- 2 Fox Hill Road.....(E)
- 2 Apple Lane.....(F)



**LOCATOR MAP**

