

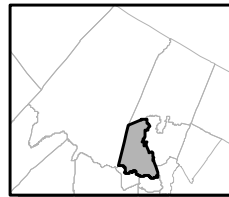
Exhibit A: Regional Master Plan Overlay Zone Designation



Regional Master Plan Overlay Zone Designation

- | | |
|---|---|
|  Protection |  Lakes Greater Than 10 acres |
|  Conservation |  Preservation Area |
|  Existing Community |  Municipal Boundaries |
| Sub-Zone | |
|  Existing Community Environmentally Constrained | |
|  Conservation Environmentally Constrained | |
|  Lake Community | |
|  Wildlife Management | |

Bloomington Borough

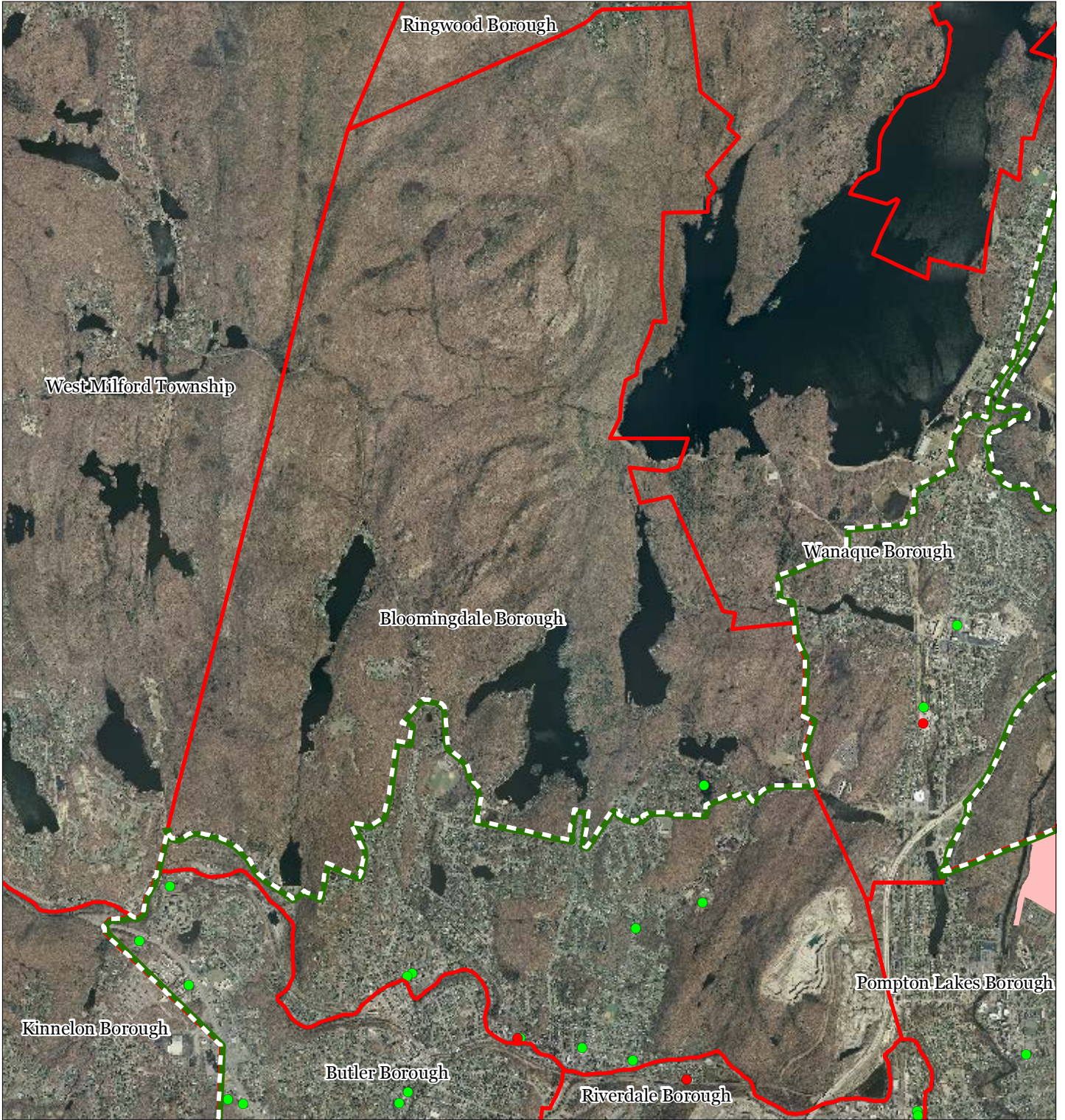


1 inch = 0.573 miles



September 2011

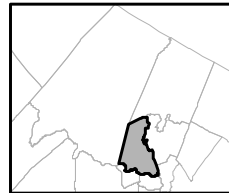
Exhibit C: Highlands Contaminated Site Inventory



Highlands Contaminated Site Inventory

Bloomingdale Borough

- Tier 1 Sites
- Tier 1 Sites (Polygons)
- Tier 2 Sites
- Preservation Area
- Municipal Boundaries

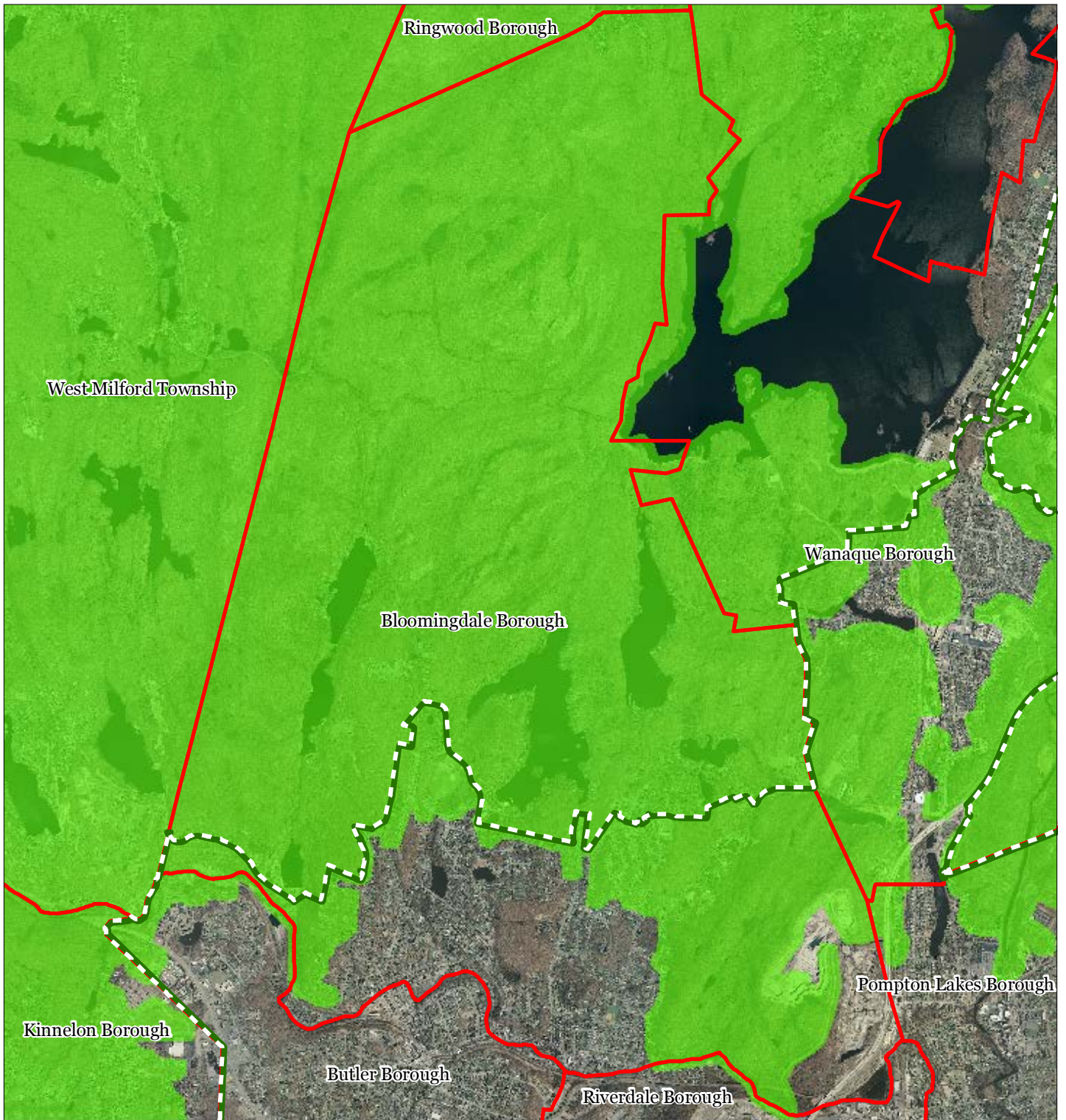





1 inch = 0.573 miles



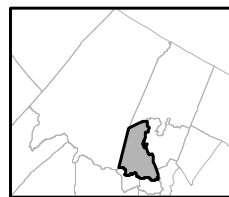
September 2011

Exhibit 8: Forest Resource Area



-  Forest Resource Area
-  Preservation Area
-  Municipal Boundaries

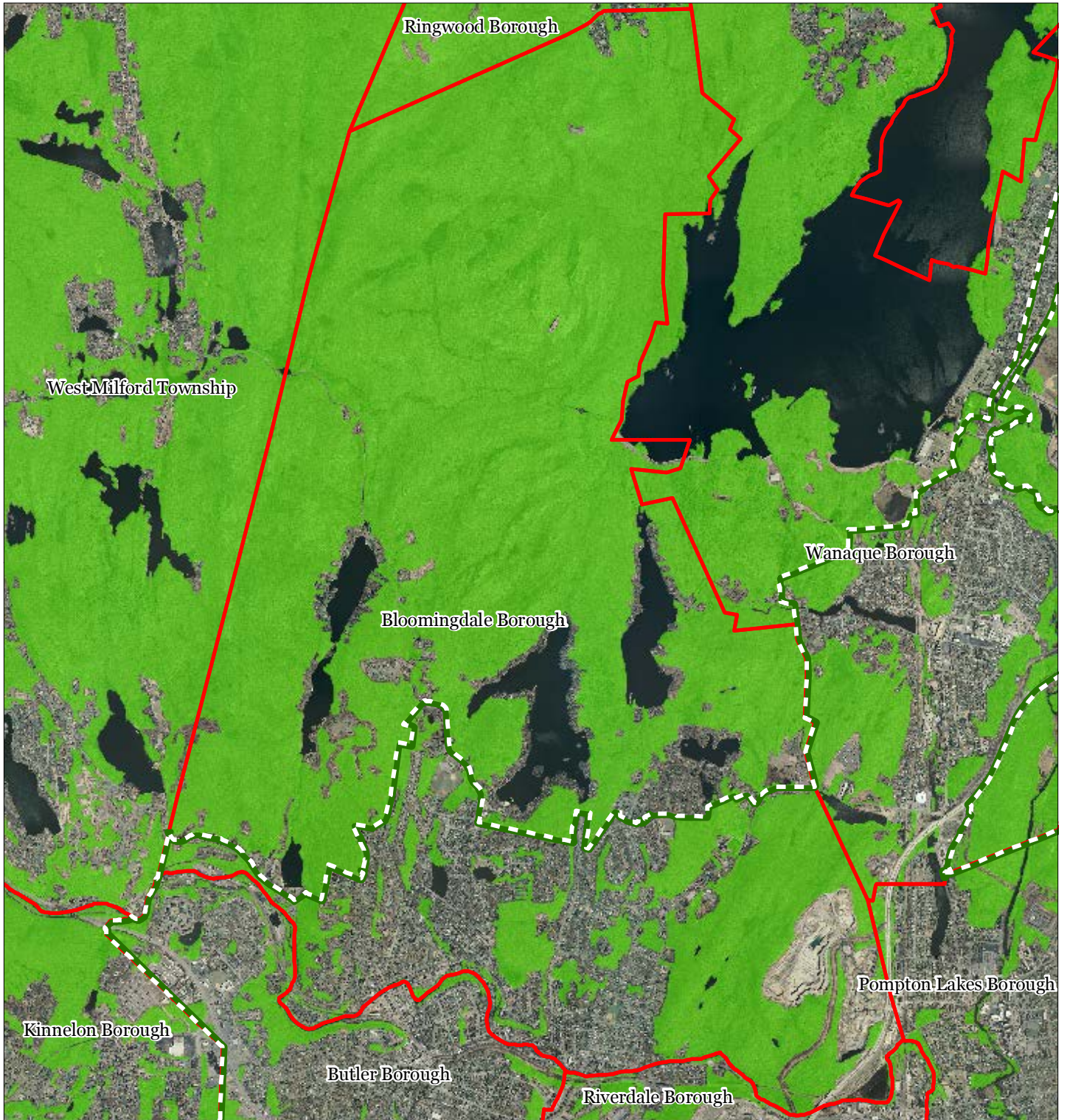
Bloomingdale Borough






1 inch = 0.573 miles

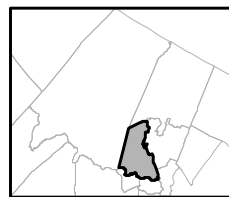
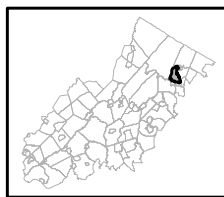


Exhibit 9: Total Forest Area



-  Forested Areas
-  Preservation Area
-  Municipal Boundaries

Bloomingdale Borough

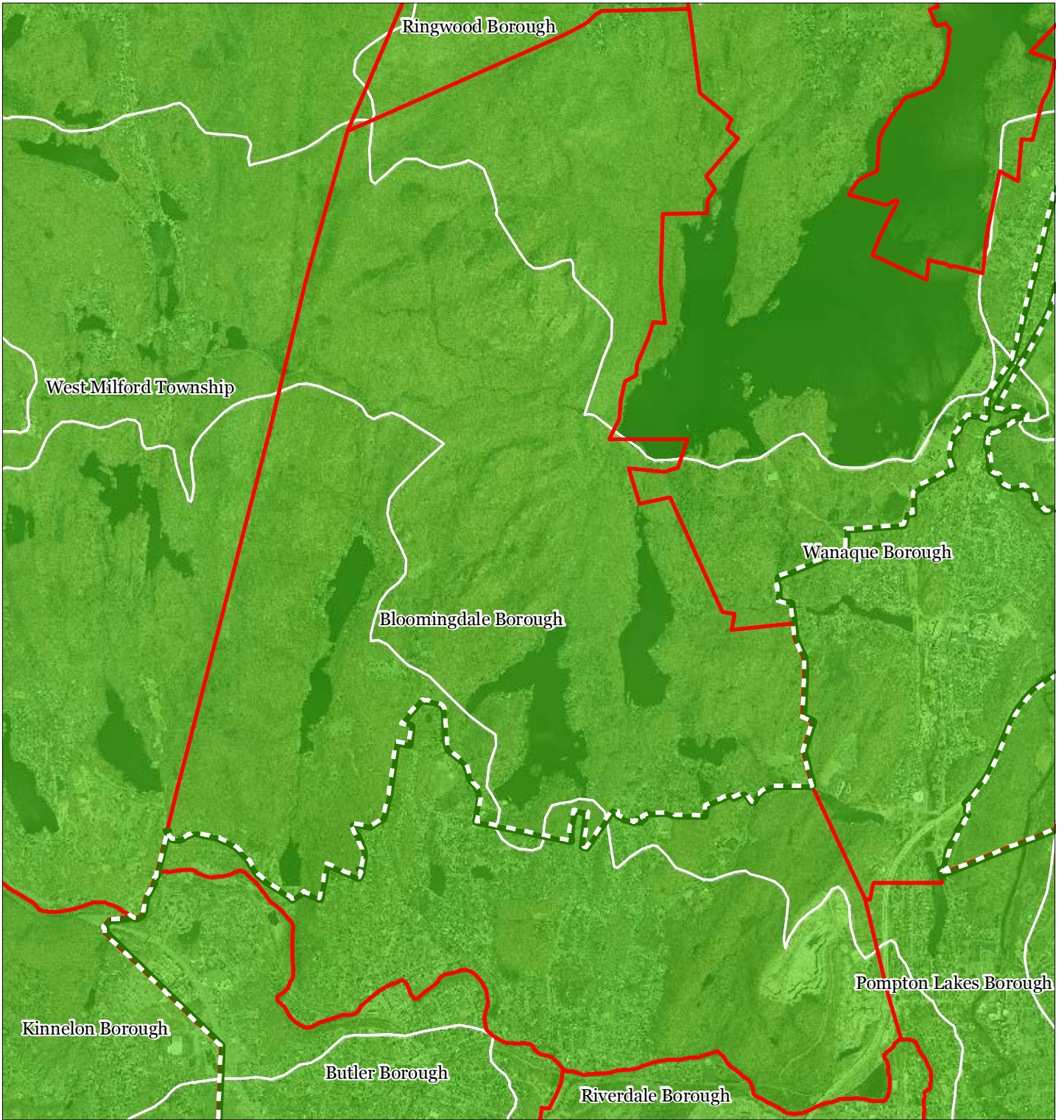


1 inch = 0.573 miles








September 2011

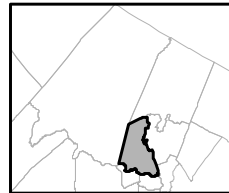
Exhibit : : Forest Subwatersheds



Forest Integrity by HUC14 Subwatershed

-  *Low*
-  *Moderate*
-  *High*
-  Preservation Area
-  Municipal Boundaries

Bloomingdale Borough

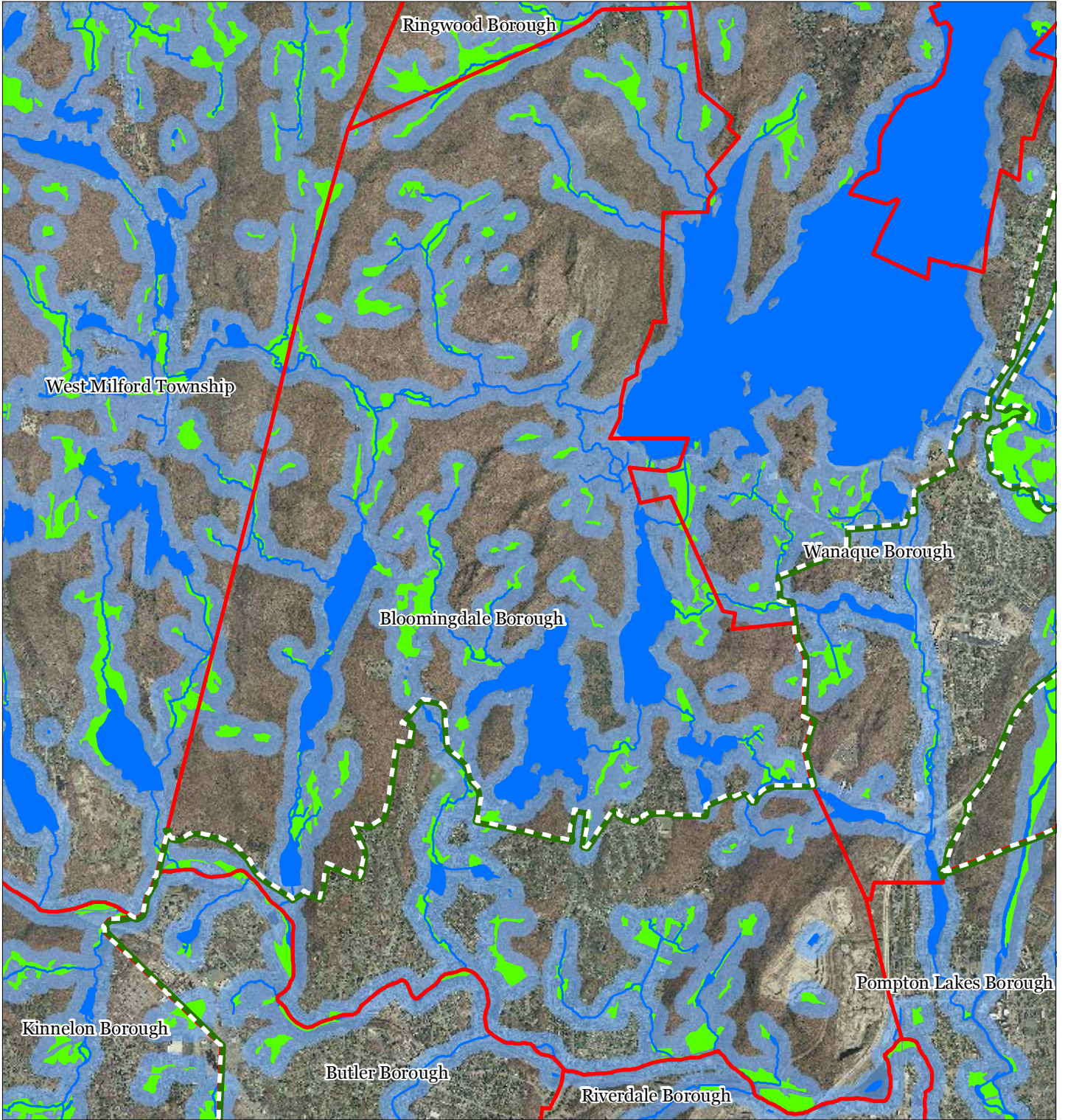


1 inch = 0.573 miles



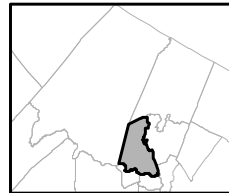
September 2011

Exhibit ; : Highlands Open Waters



Bloomington Borough

-  Highlands Open Water Buffers (300ft)
-  Streams
-  Wetlands
-  Lakes & Ponds
-  Preservation Area
-  Municipal Boundaries

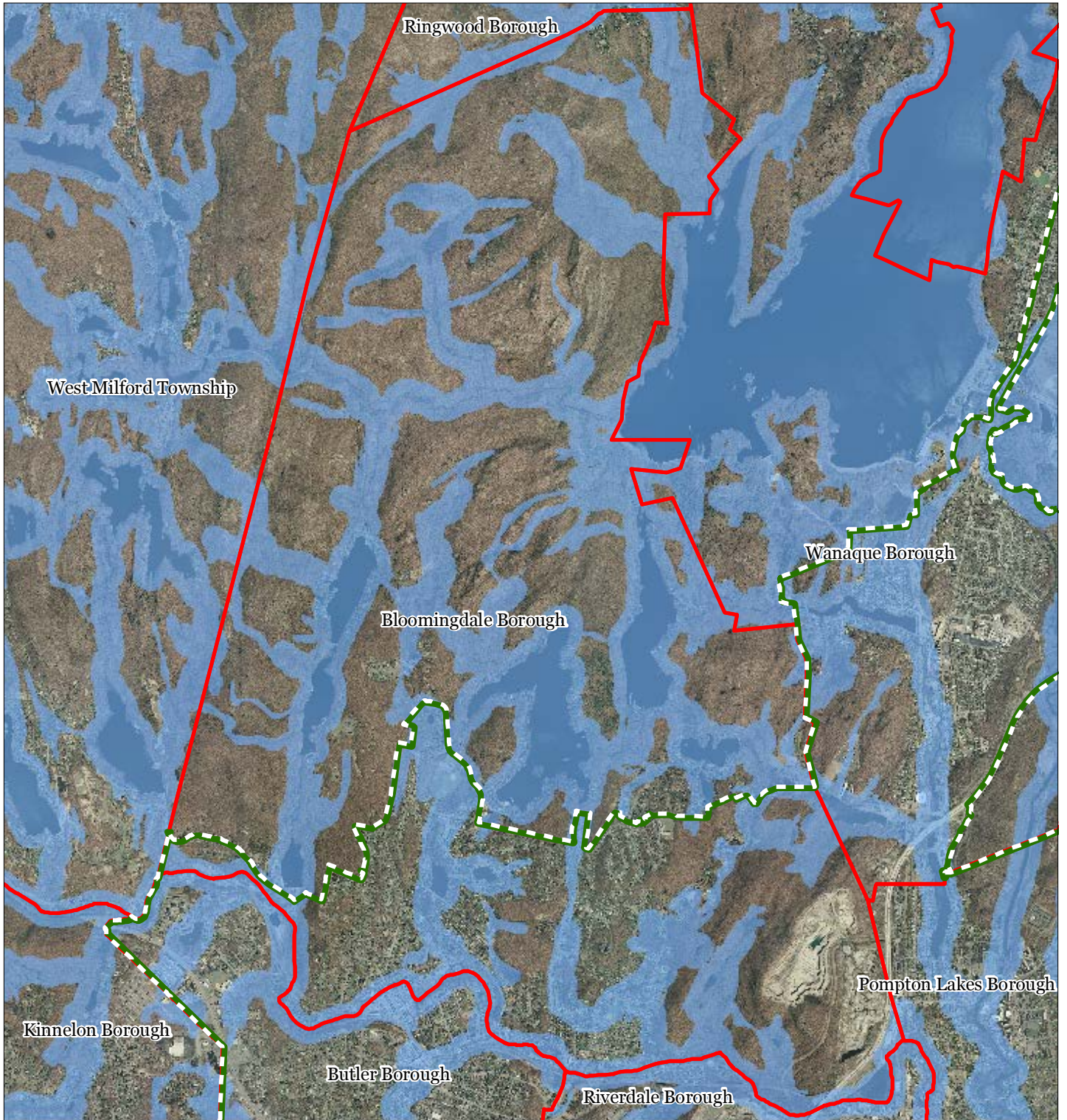





1 inch = 0.573 miles



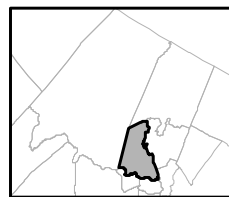
September 2011

Exhibit < : Highlands Riparian Areas



-  Riparian Area
-  Preservation Area
-  Municipal Boundaries

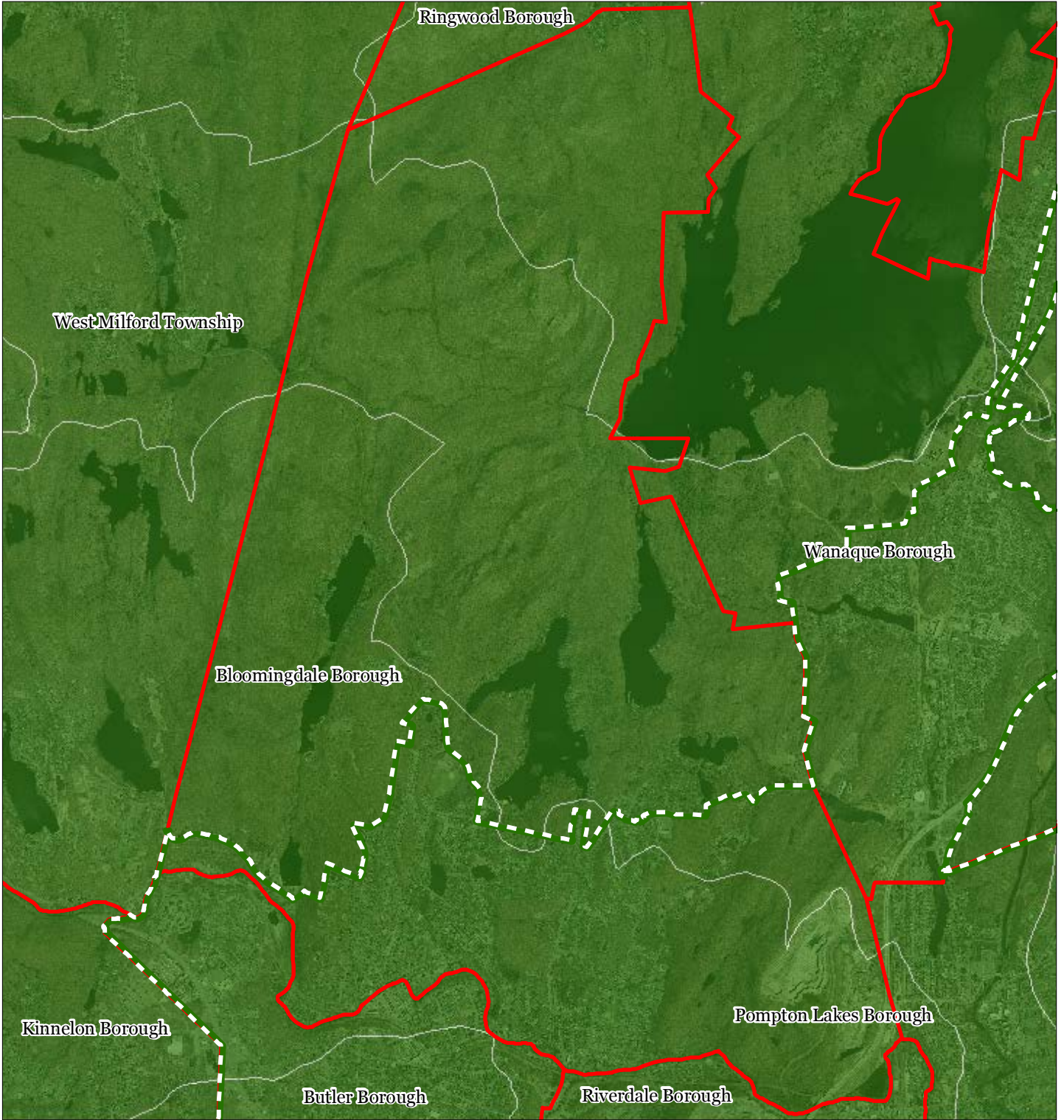
Bloomington Borough








1 inch = 0.573 miles



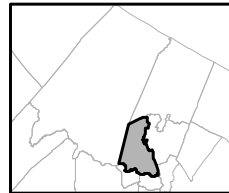
Exhibit = Watershed Values



Watershed Values by HUC14 Subwatershed

-  Low
-  Moderate
-  High
-  Preservation Area
-  Municipal Boundaries

Bloomingdale Borough

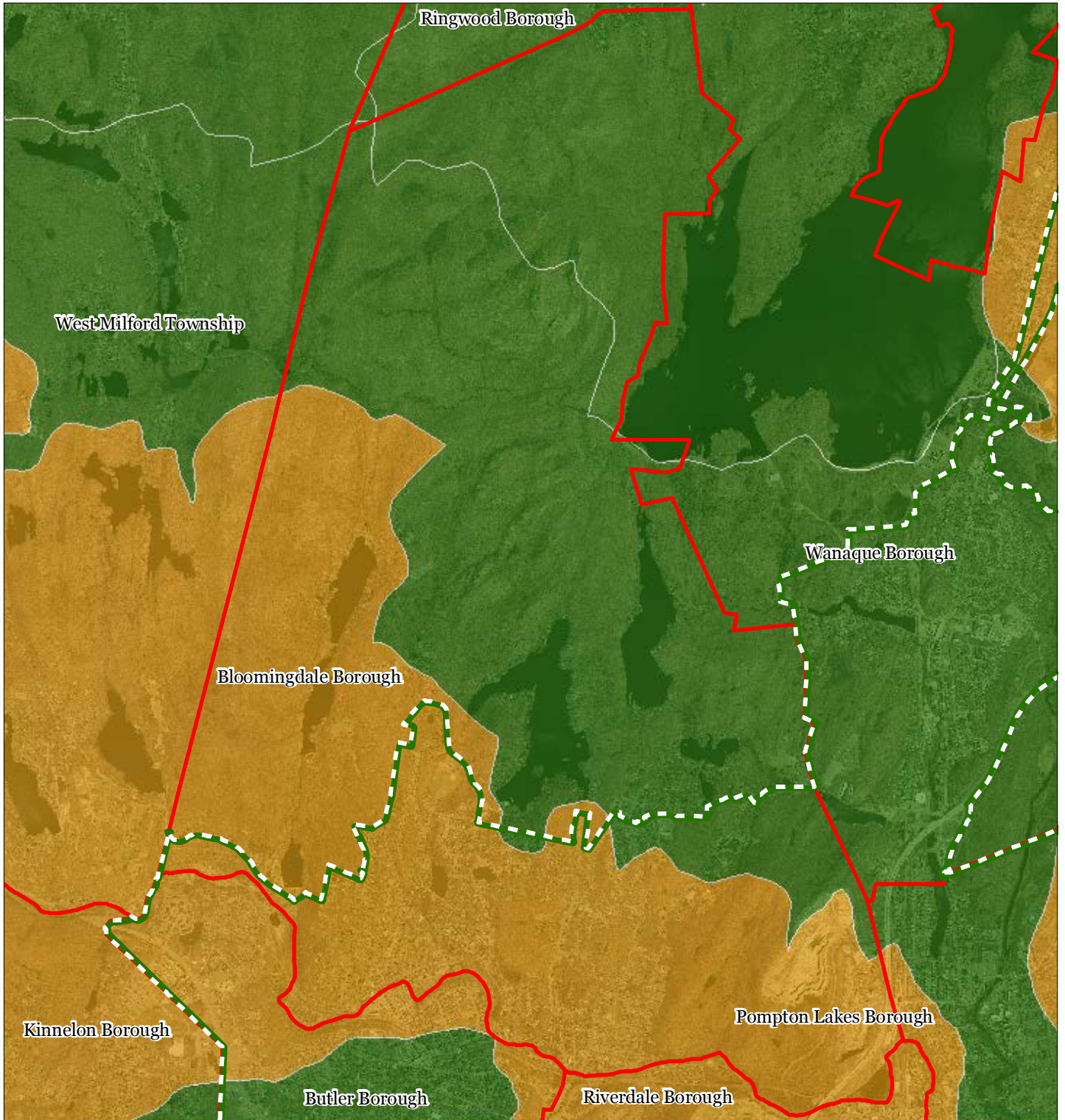


1 inch = 0.573 miles

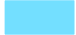






September 2011

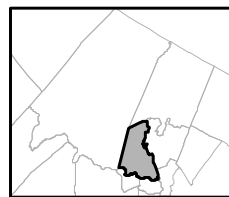
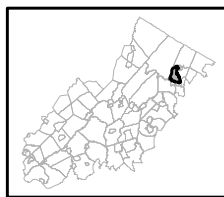
Exhibit >: Riparian Integrity



Riparian Integrity by HUC14 Subwatershed

-  Low
-  Moderate
-  High
-  Preservation Area
-  Municipal Boundaries

Bloomingdale Borough

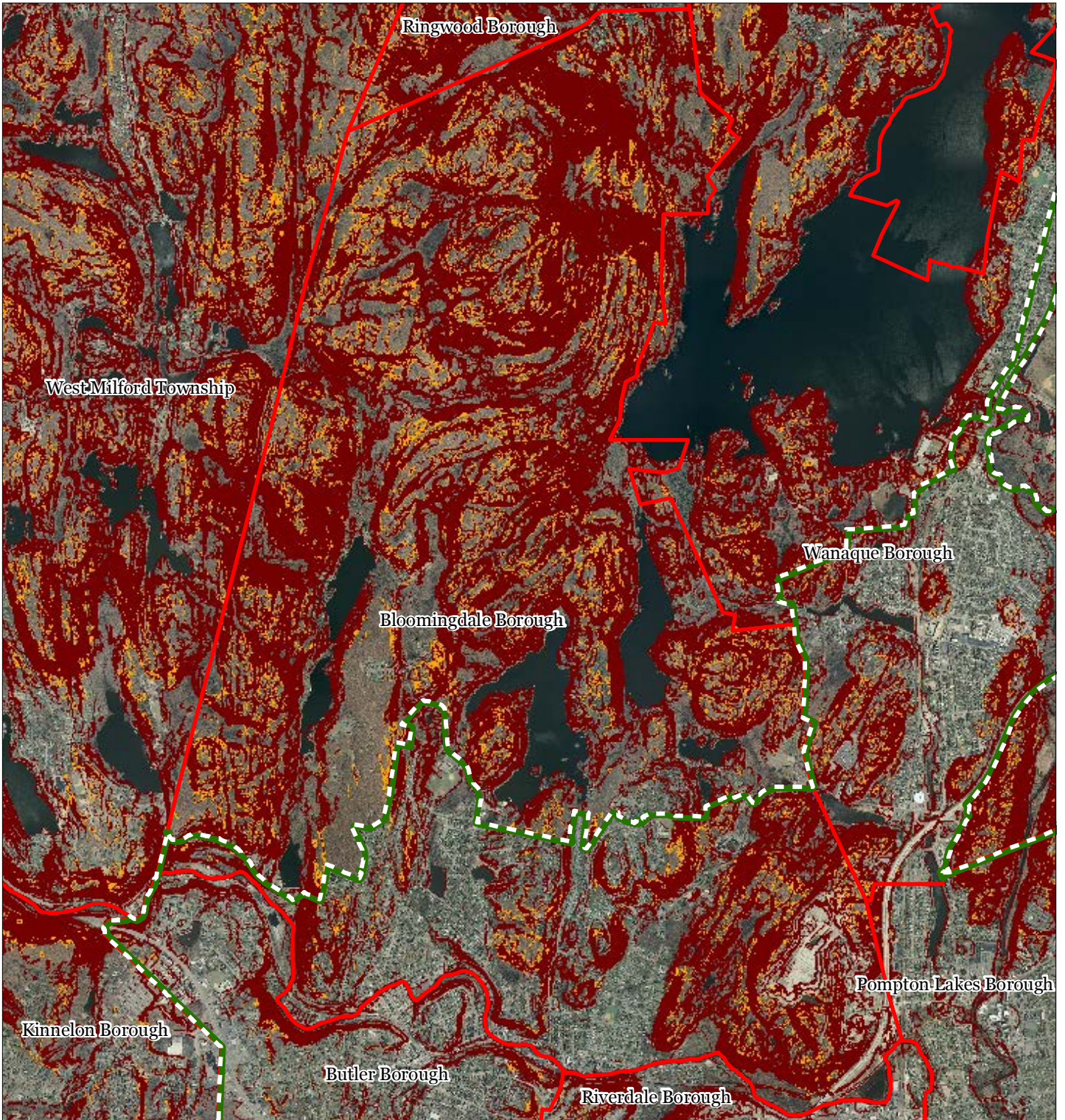


1 inch = 0.573 miles







September 2011

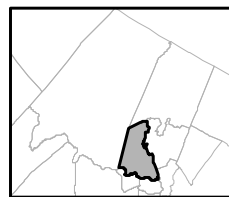
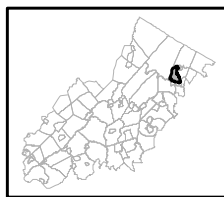
Exhibit 7 : Steep Slope Protection Areas



Steep Slopes

-  Moderate
-  Severe
-  Preservation Area
-  Municipal Boundaries

Bloomingdale Borough

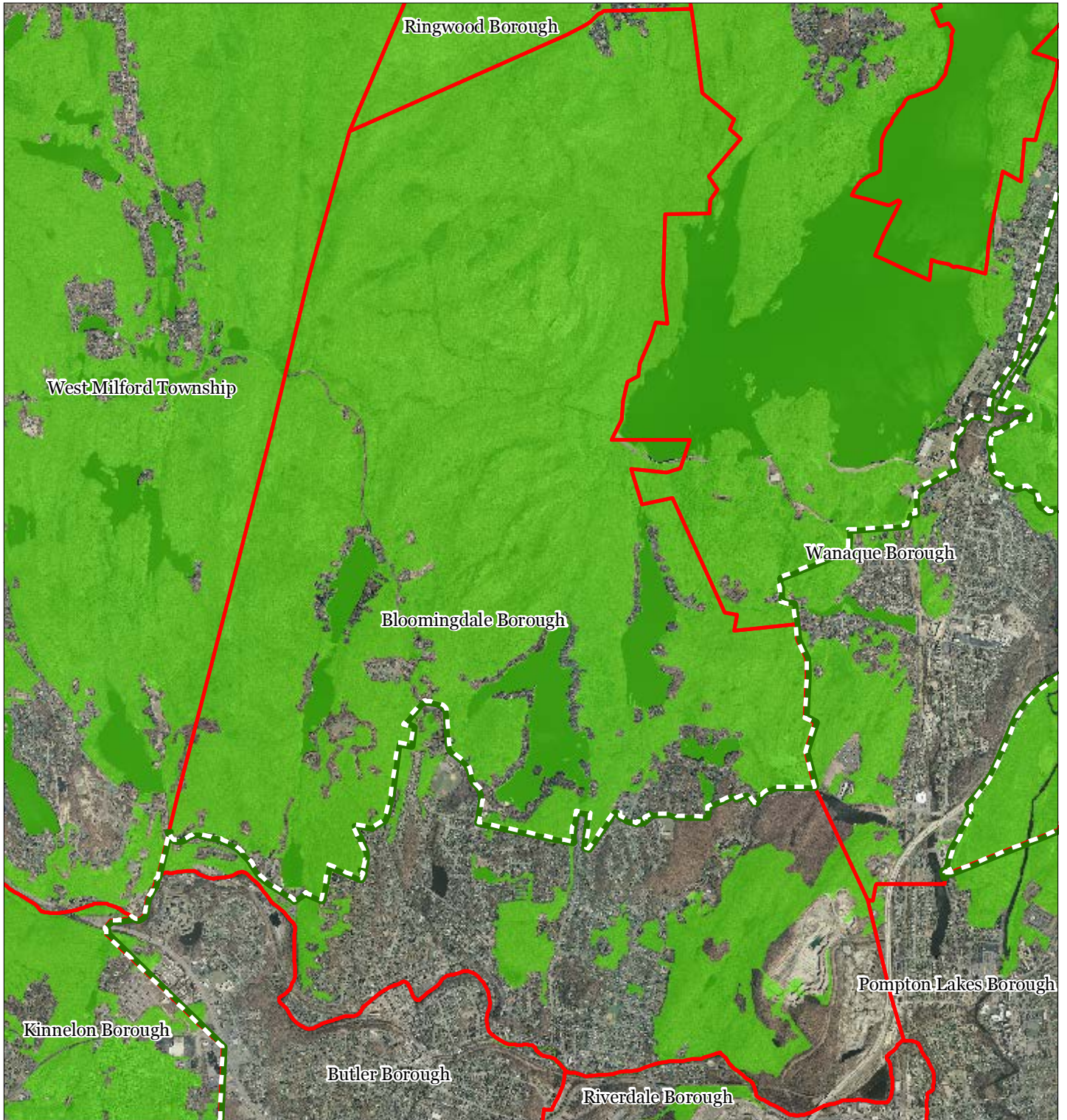





1 inch = 0.573 miles



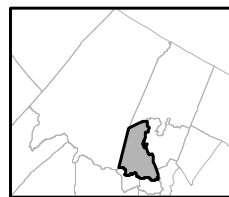
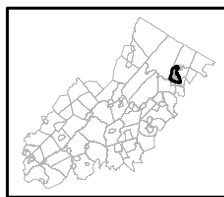
September 2011

Exhibit @ Critical Wildlife Habitat



-  Critical Wildlife Habitat
-  Preservation Area
-  Municipal Boundaries

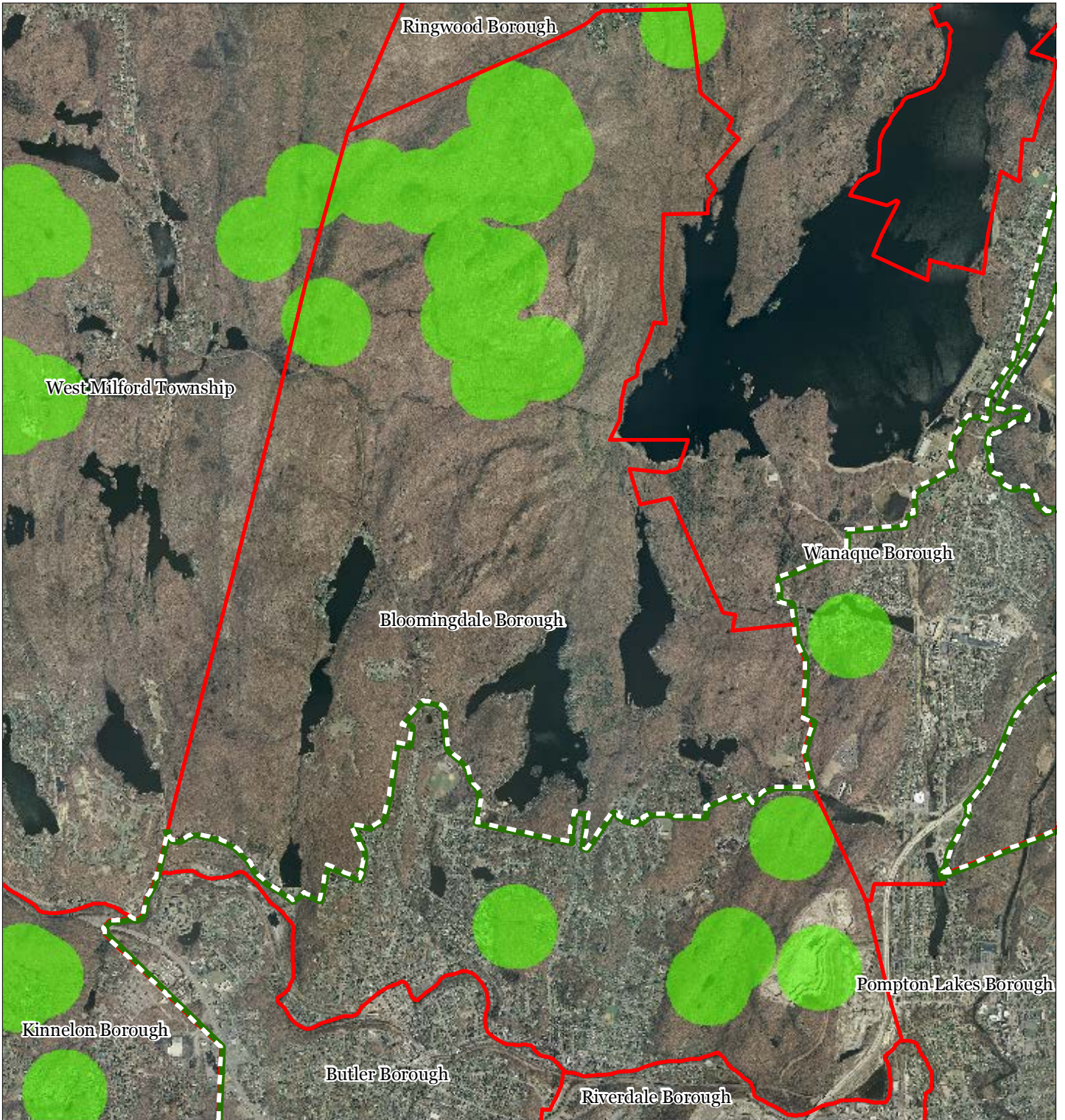
Bloomingdale Borough






1 inch = 0.573 miles

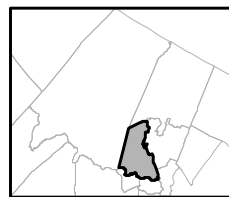
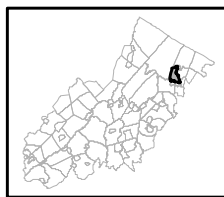


Exhibit B: Vernal Pools



-  Vernal Pools + 1000ft Buffer
-  Preservation Area
-  Municipal Boundaries

Bloomingdale Borough

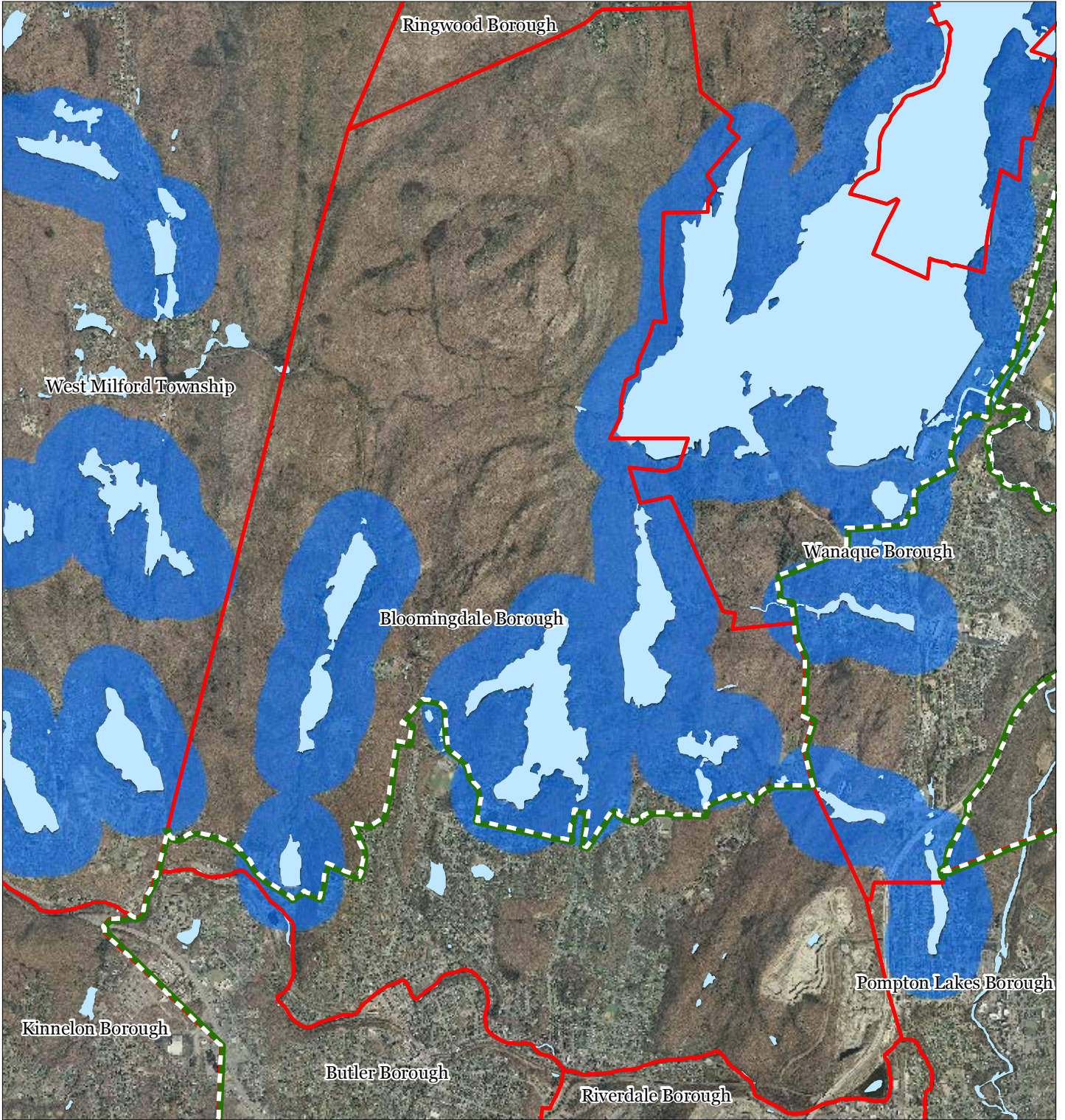


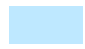



1 inch = 0.573 miles



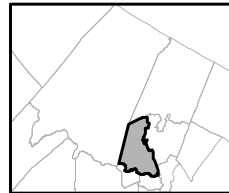
September 2011

Exhibit C: Lake Management Area



-  Lakes & Ponds
-  Lake Management Area
-  Preservation Area
-  Municipal Boundaries

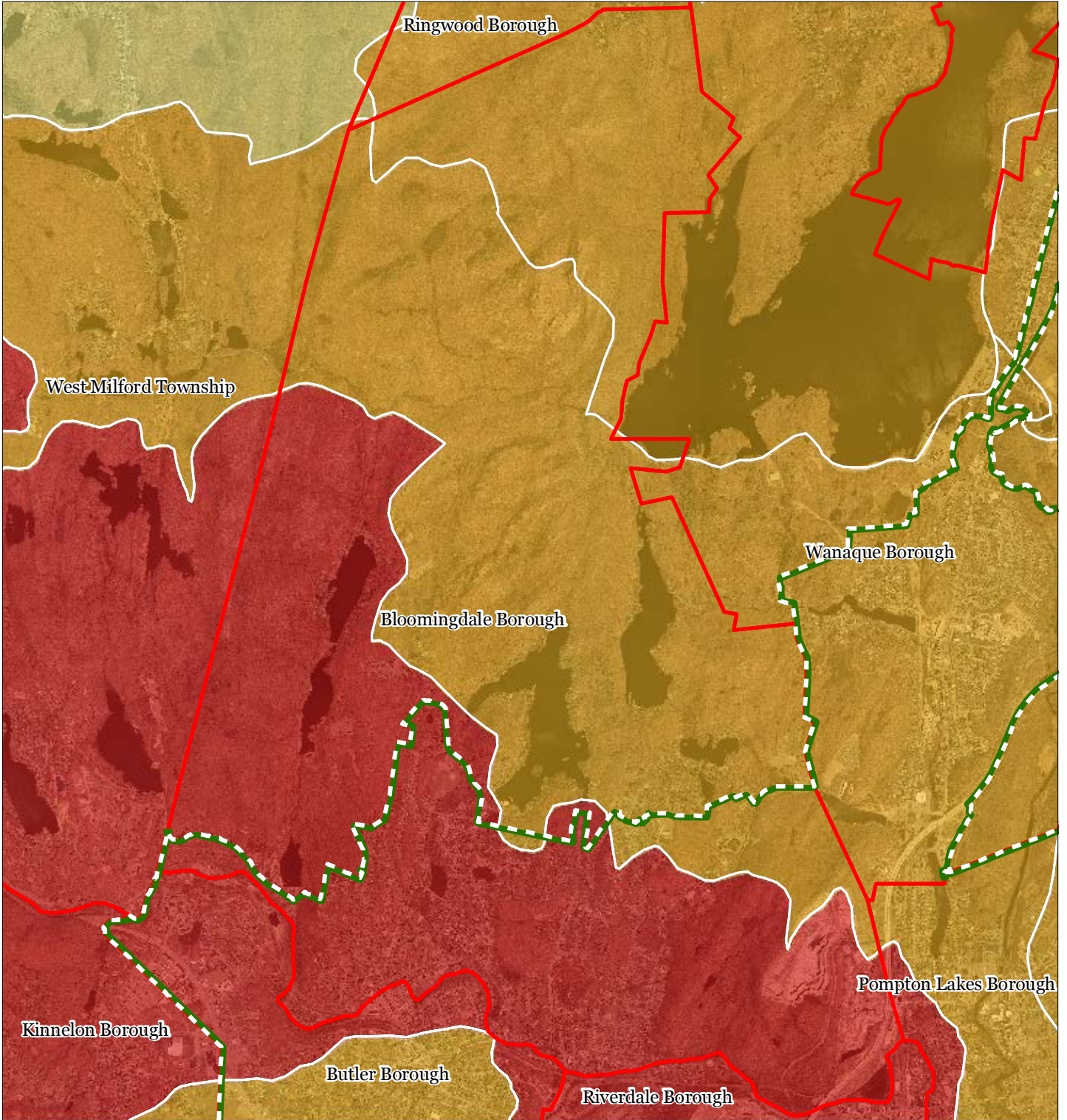
Bloomingdale Borough



1 inch = 0.573 miles



Exhibit D: Net Water Availability



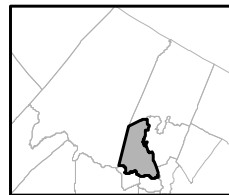
Net Water Availability By HUC14

Million Gallons Per Day (MGD)

- 0.10 - 0.39
- 0.05 - 0.09
- 0.00 - 0.04
- 0.09 - 0.00
- 0.99 - -0.10
- 7.10 - -1.00

- Preservation Area
- Municipal Boundaries

Bloomingdale Borough

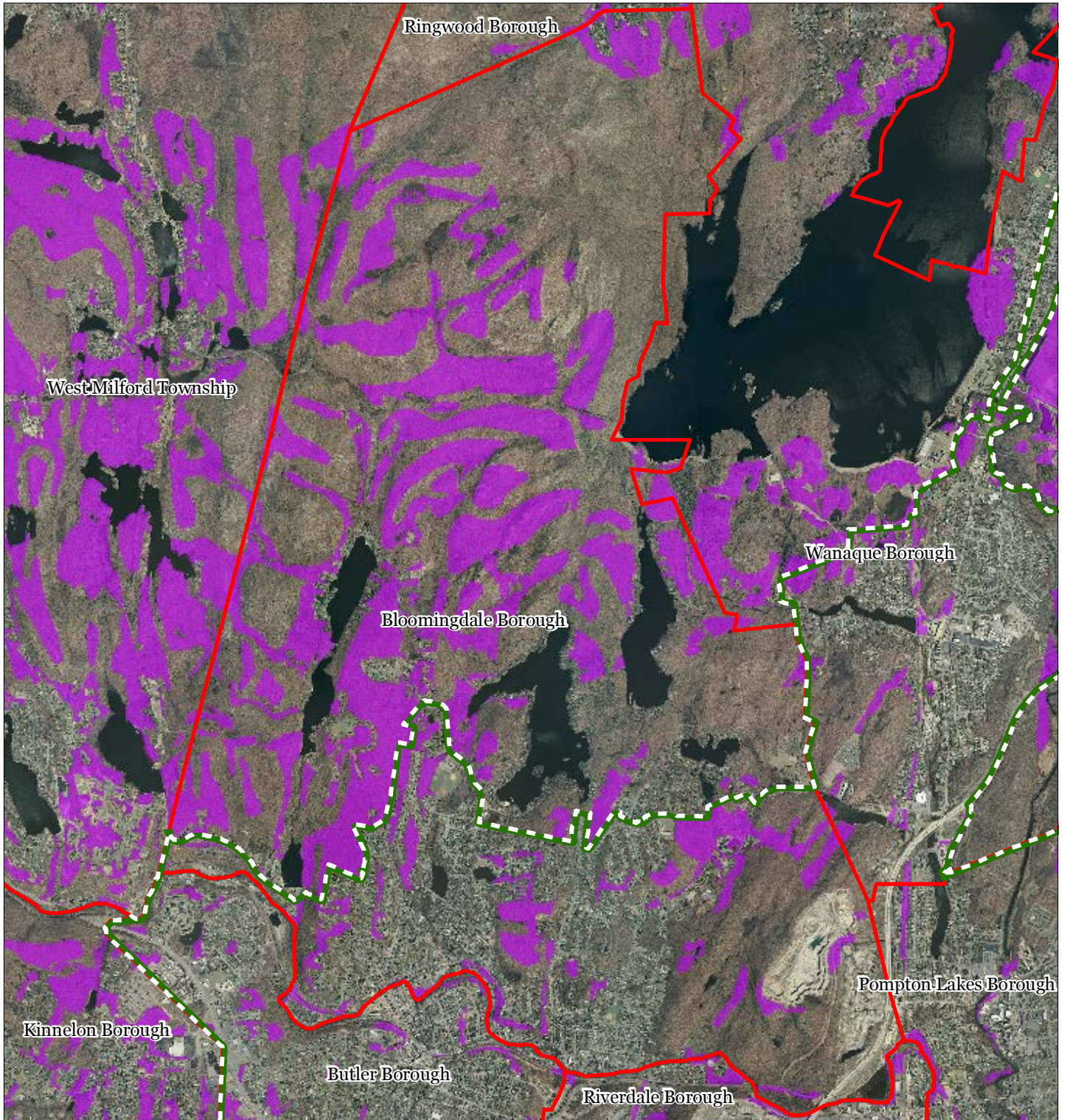





1 inch = 0.573 miles



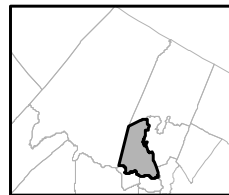
September 2011

Exhibit E: Prime Ground Water Recharge Areas



-  Prime Groundwater Recharge Areas
-  Preservation Area
-  Municipal Boundaries

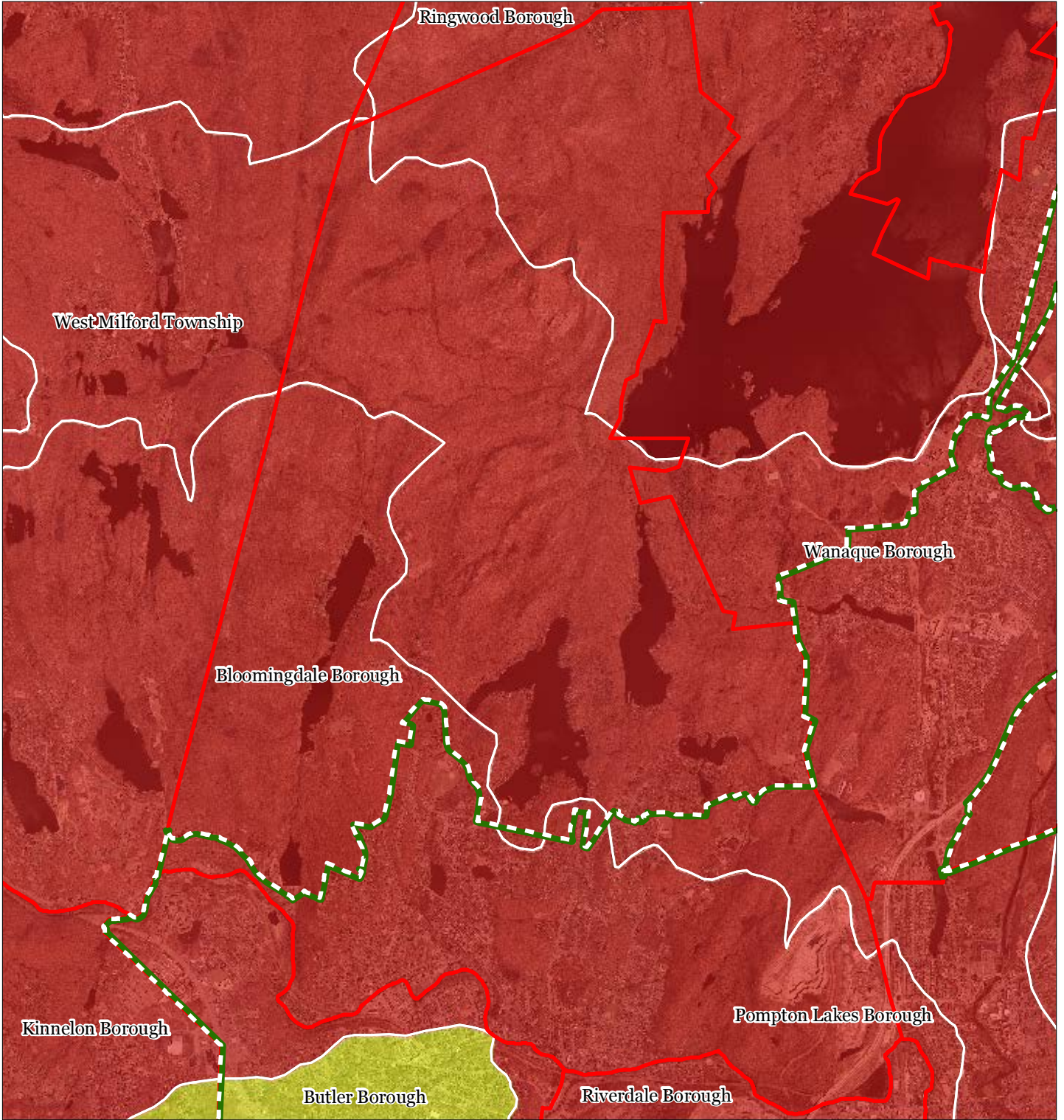
Bloomingdale Borough









1 inch = 0.573 miles



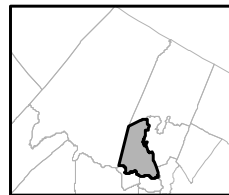
Exhibit F: HUC 14s on NJDEP Impaired Waters List



Impaired Waters Overall Assessment by HUC14 Subwatershed

-  Non Impacted
-  Insufficient Data Available
-  Moderate
-  Water Quality Impaired
-  Preservation Area
-  Municipal Boundaries

Bloomingdale Borough

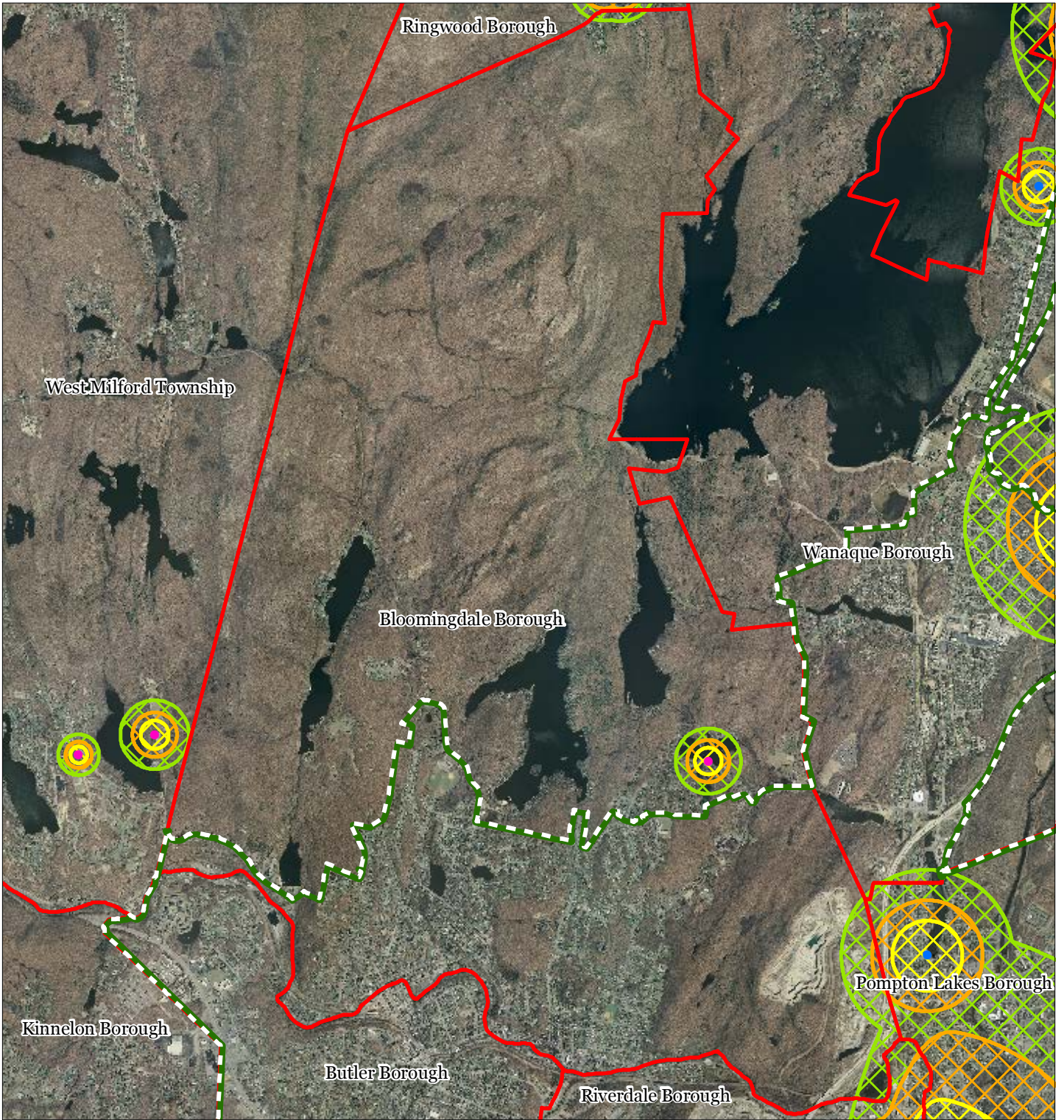


1 inch = 0.573 miles



September 2011

Exhibit G Wellhead Protection Areas



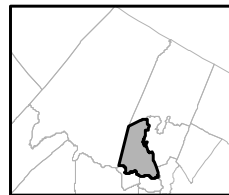
- Public Community Wells
- Public Non-Community Wells

Bloomingdale Borough

Wellhead Protection Areas

- 2-Year Tier
- 5-Year Tier
- 12-Year Tier

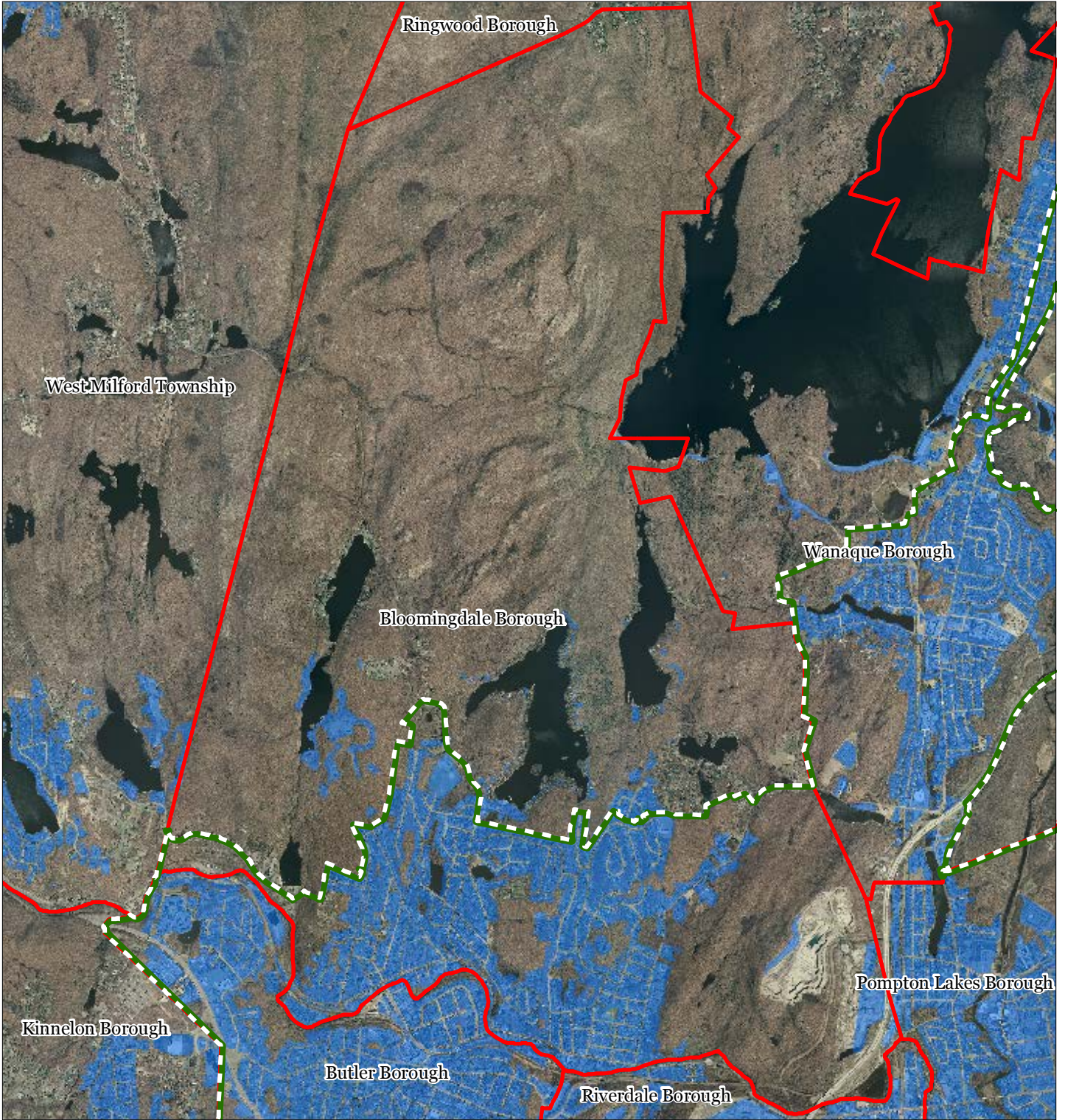
- Preservation Area
- Municipal Boundaries






1 inch = 0.573 miles

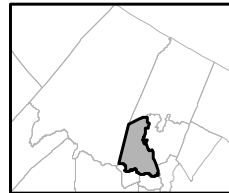


Exhibit T: Public Community Water Systems



-  Public Community Water Systems
-  Preservation Area
-  Municipal Boundaries

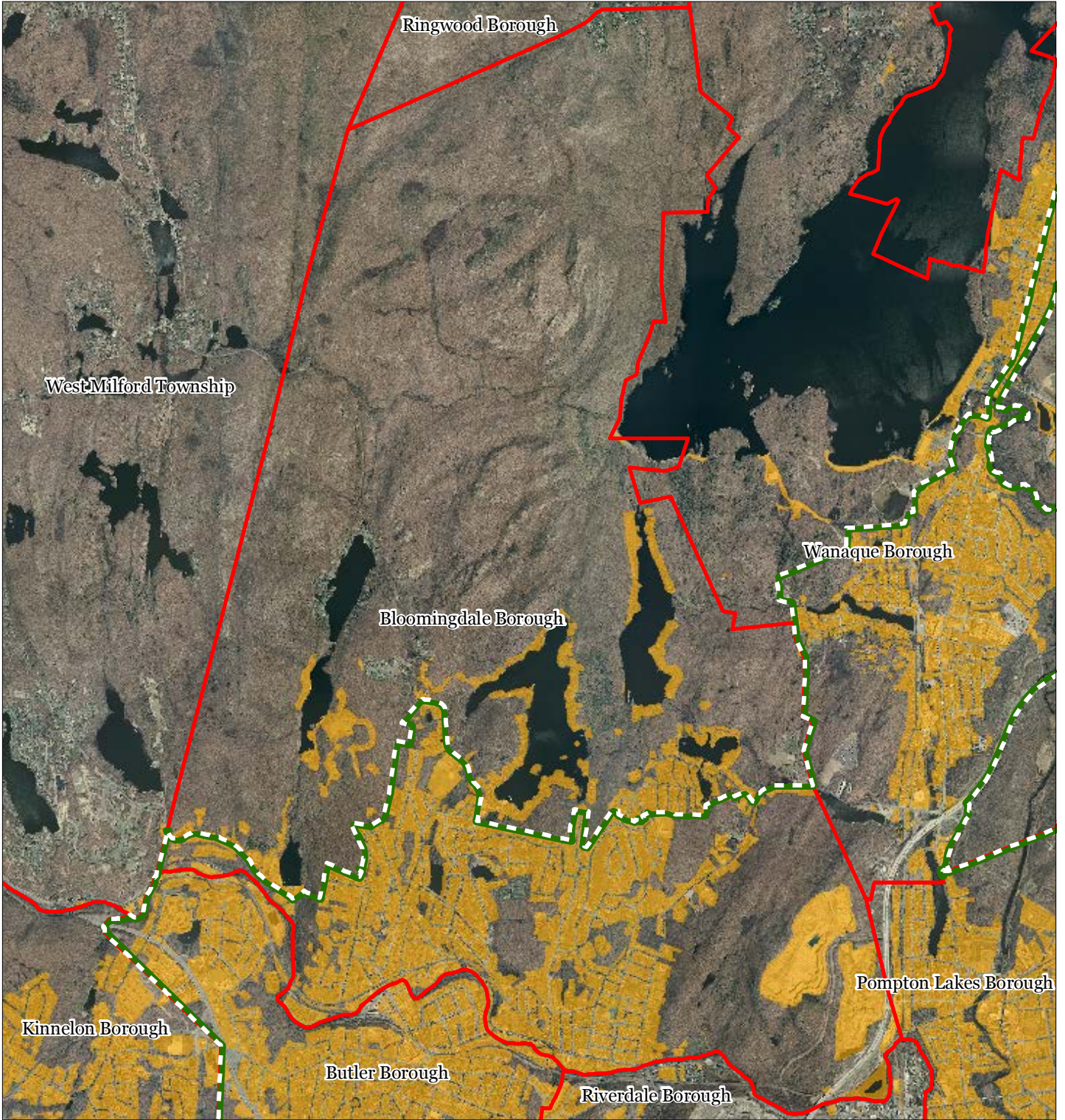
Bloomingdale Borough






1 inch = 0.573 miles



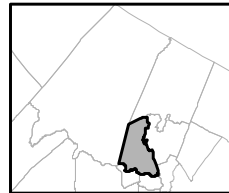
Exhibit U: Highlands Domestic Sewerage Facilities



Highlands Domestic Sewerage Facilities

-  Existing Area Served
-  Preservation Area
-  Municipal Boundaries

Bloomington Borough

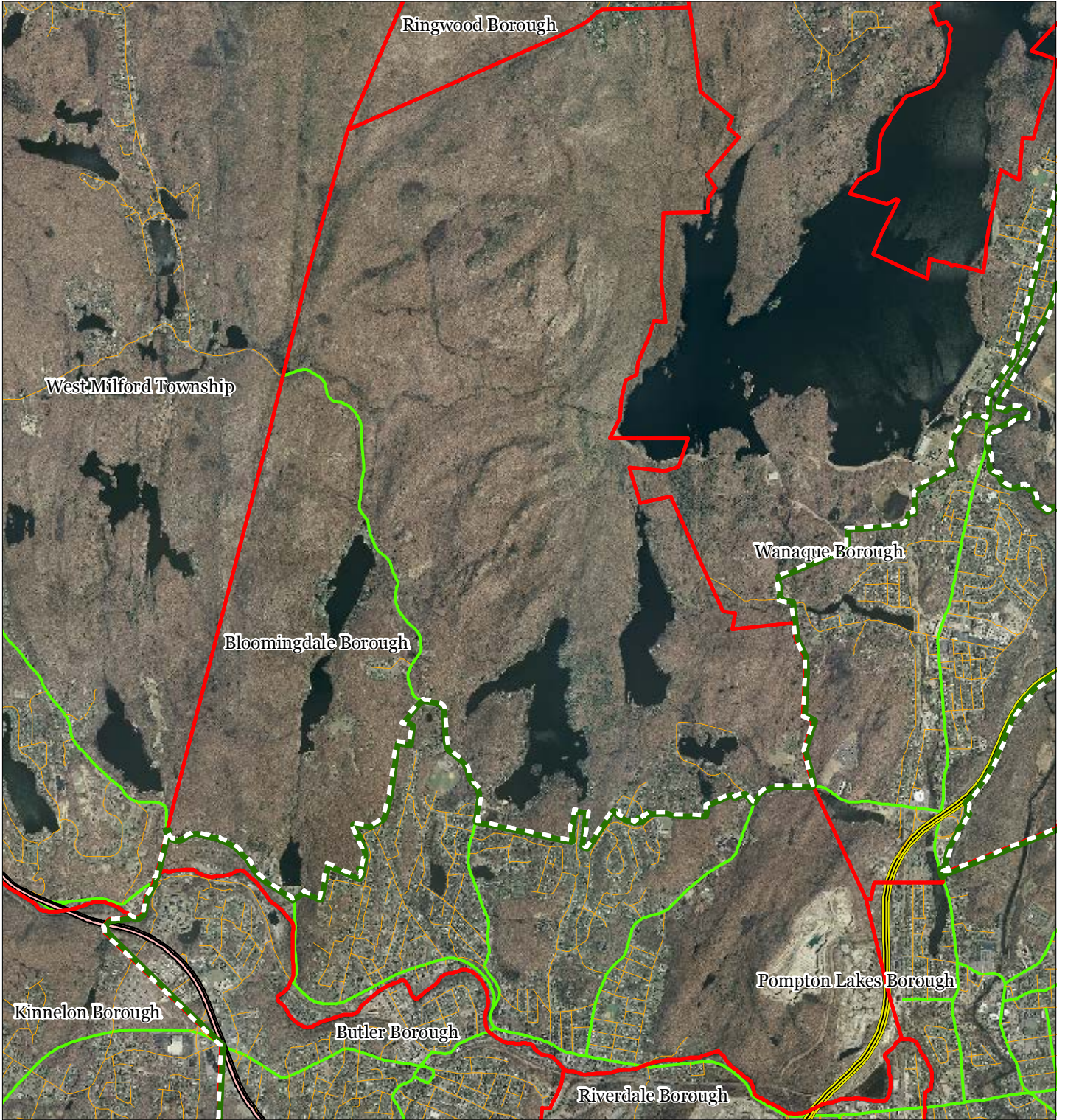


1 inch = 0.573 miles



September 2011

Exhibit W: Highlands Roadway Network

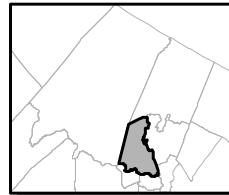


Bloomingdale Borough

Roadway Network

- Interstate Highways
- U.S. Routes
- State Routes
- County Routes
- Local Routes

- Preservation Area
- Municipal Boundaries

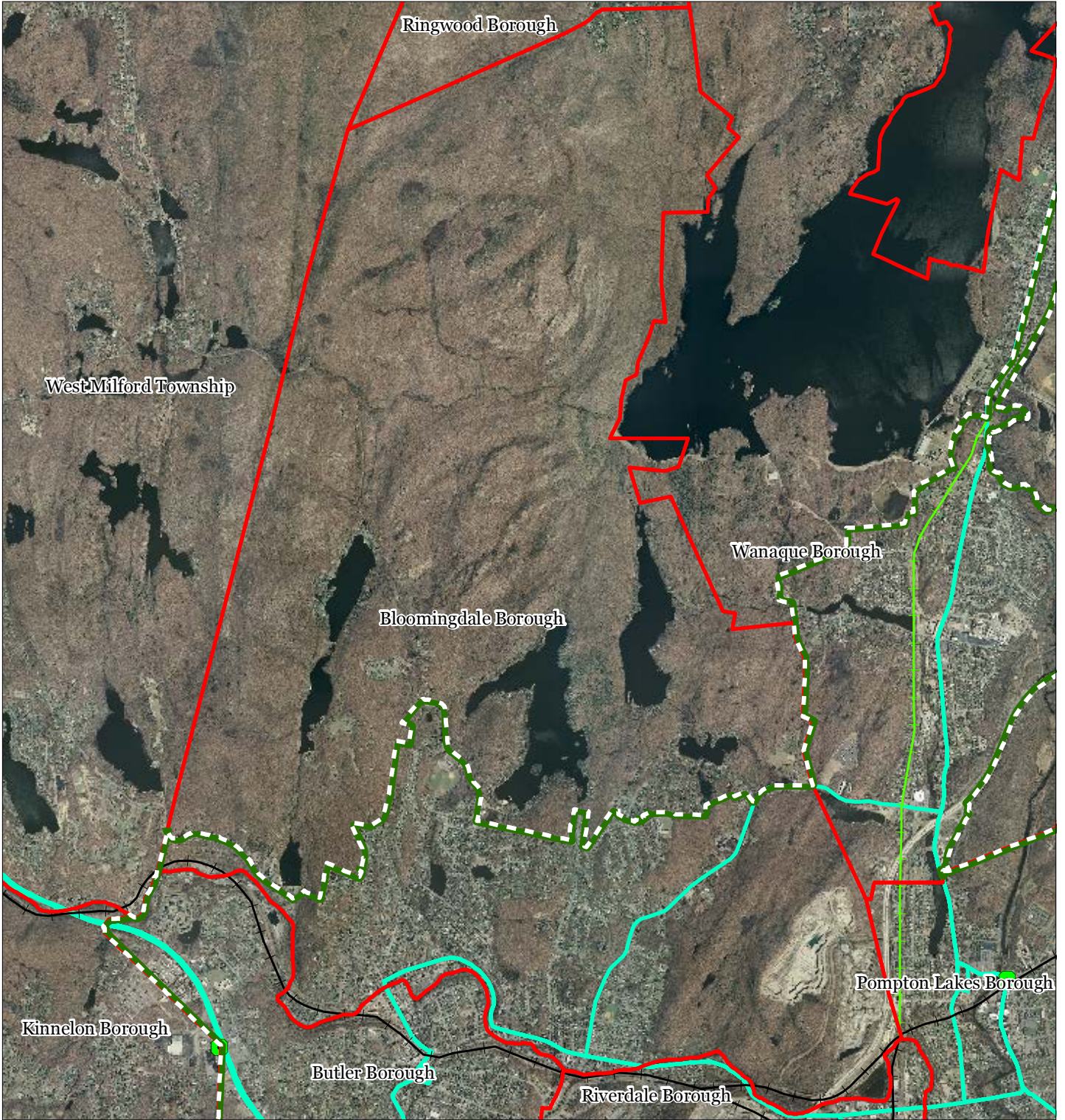


1 inch = 0.573 miles



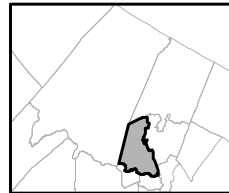
September 2011

Exhibit X: Highlands Transit Network



- | | |
|--------------------------------|----------------------|
| Rail Network | Rail Stations |
| Boonton Line | Park and Ride Sites |
| Main Line & Bergen County Line | Private Bus Lines |
| Morris and Essex Line | NJ Transit Bus Lines |
| Raritan Valley Line | Airports |
| Freight Rail Lines | |
| Freight Rail Lines | |
| Abandoned Freight Rail | |

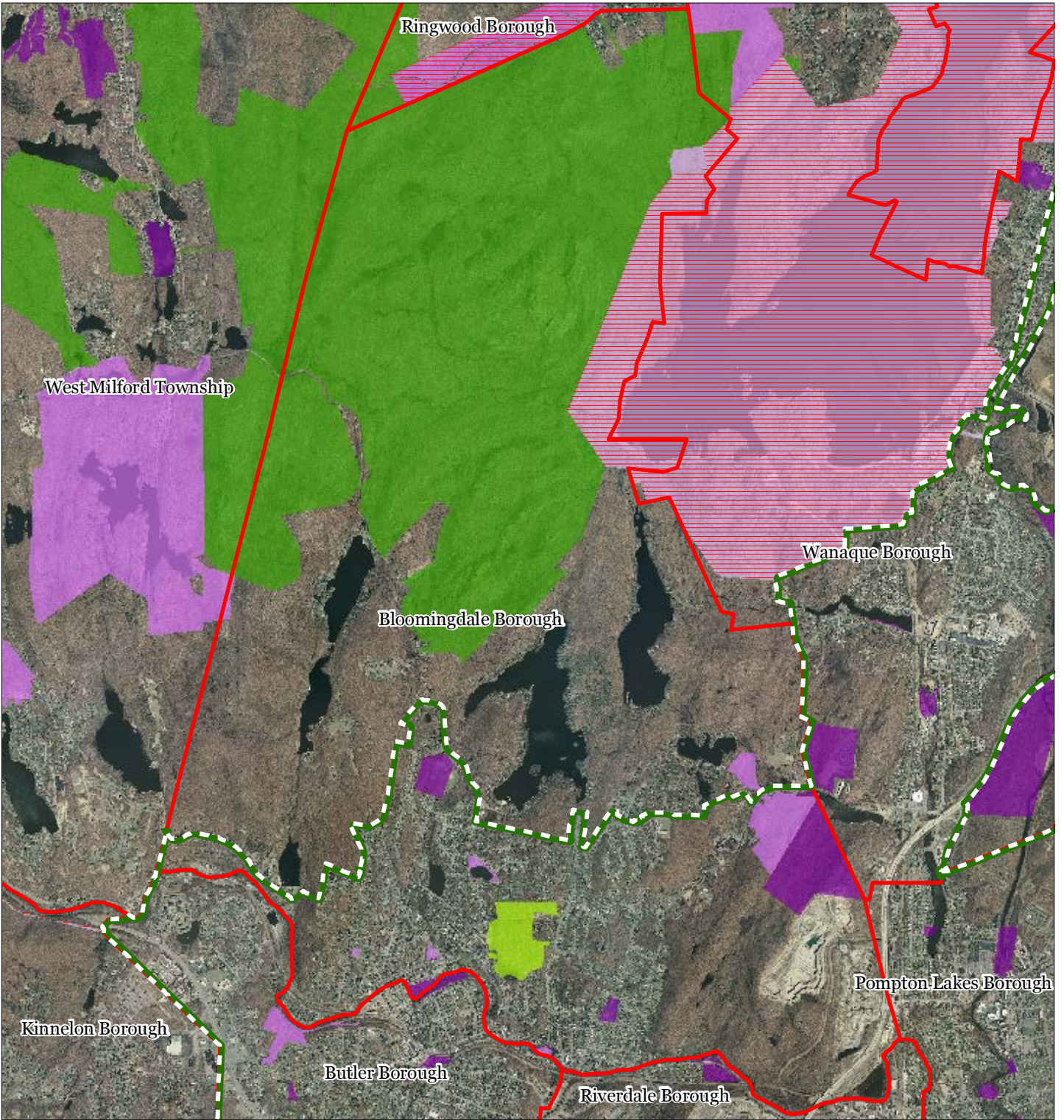
Bloomingdale Borough



1 inch = 0.573 miles

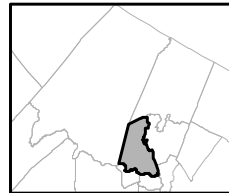


Exhibit Y: Preserved Lands



- | | |
|---|-------------------------------|
| Preserved Lands | Conservation Easements |
| Federal Open Space | Green Acres |
| State Open Space | SADC Easements |
| County Open Space | SADC Final |
| Municipal Open Space | SADC Preserved |
| Non-Profit/Private Open Space | Municipal Boundaries |
| Water Supply Watershed Lands | Preservation Area |
| Preserved Farmland | |
| Highlands Transfer of Development Lands | |

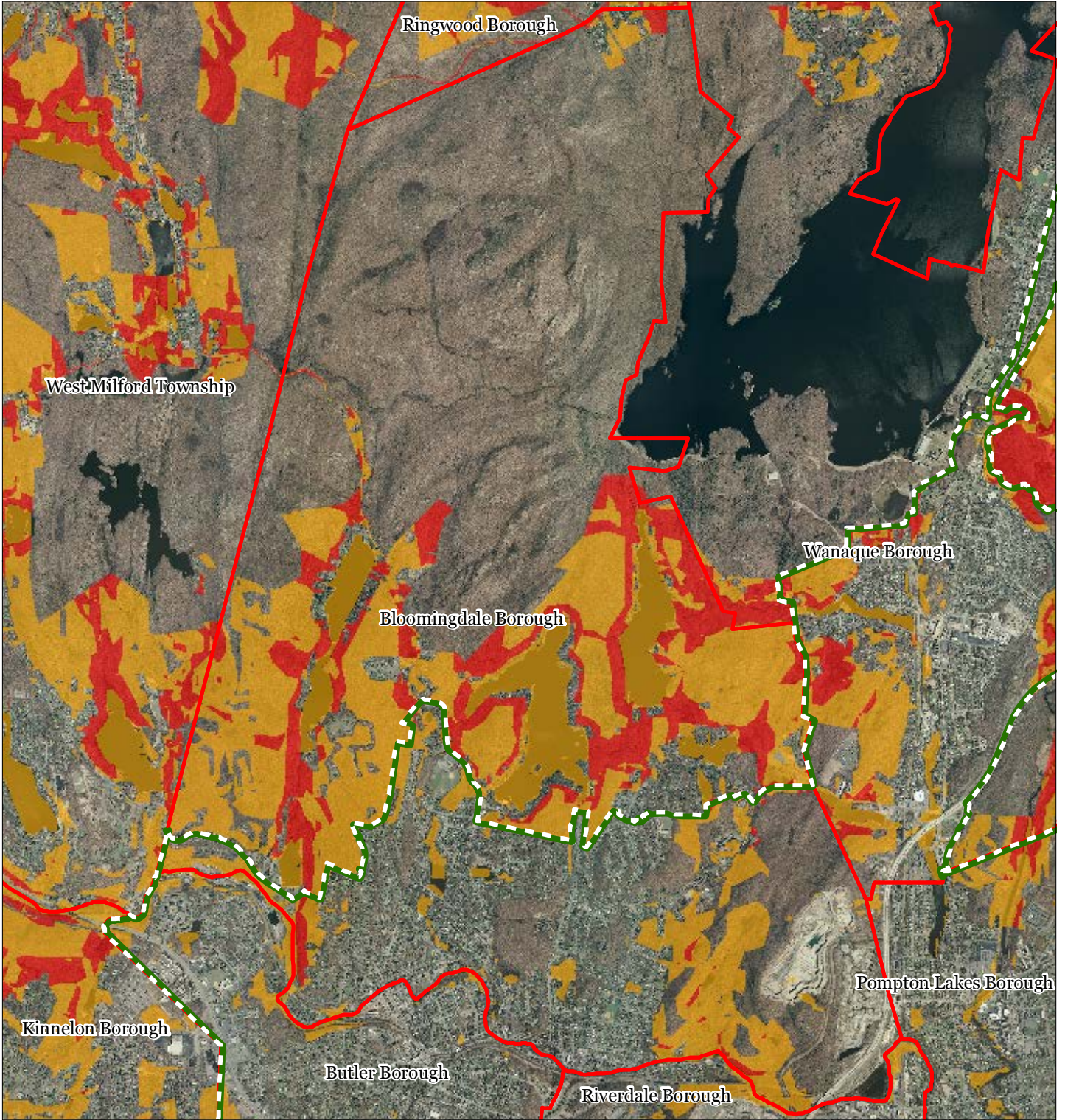
Bloomingdale Borough



1 inch = 0.573 miles



Exhibit Z: Highlands Conservation Priority Areas



Conservation Priority Area

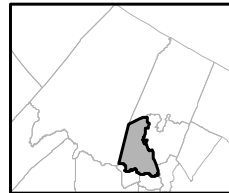
 Moderate

 High

 Preservation Area

 Municipal Boundaries

Bloomingdale Borough

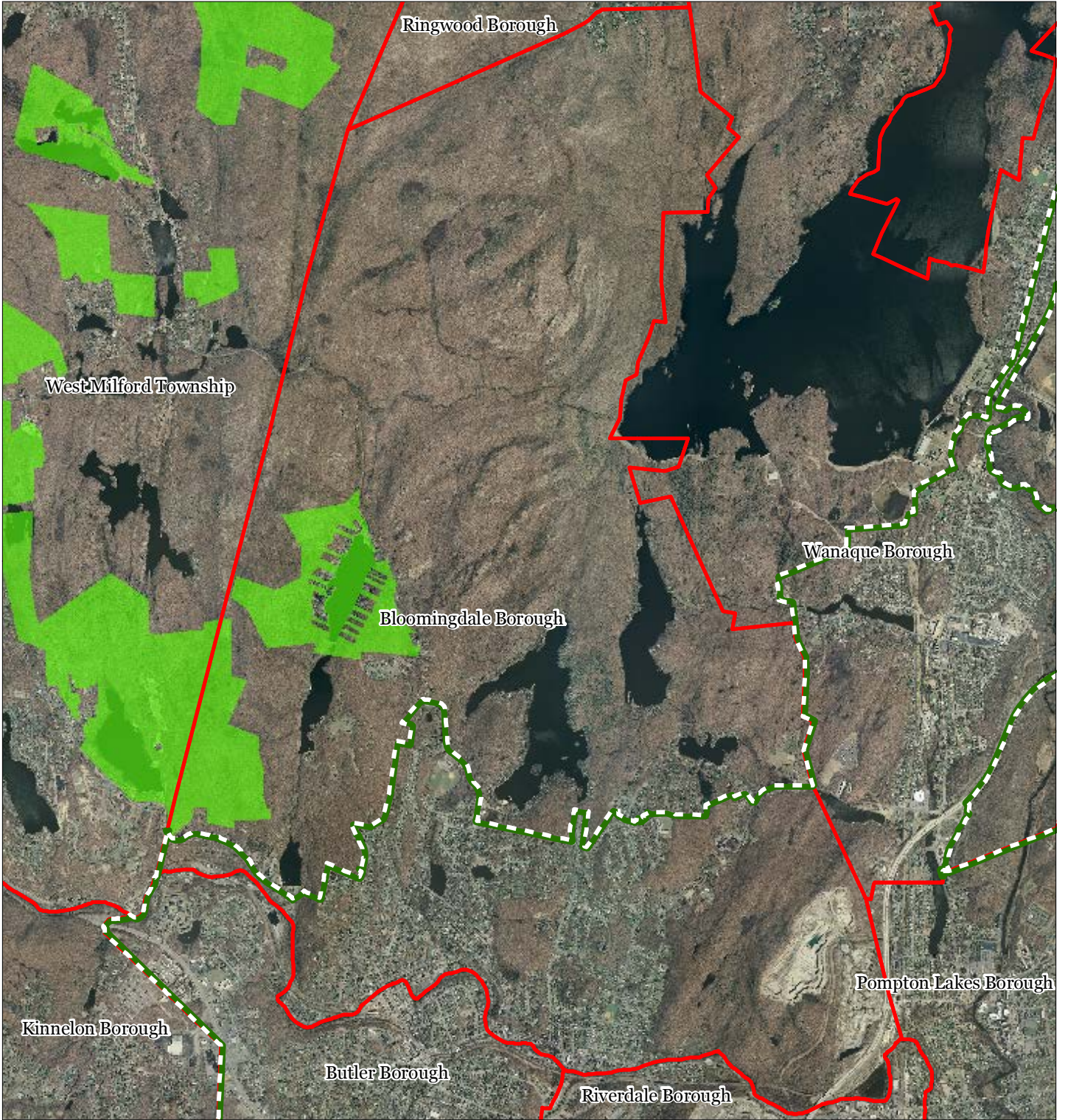





1 inch = 0.573 miles



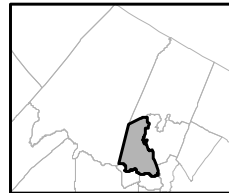
September 2011

Exhibit AA: Highlands Special Environmental Zone



-  Special Environmental Zone
-  Preservation Area
-  Municipal Boundaries

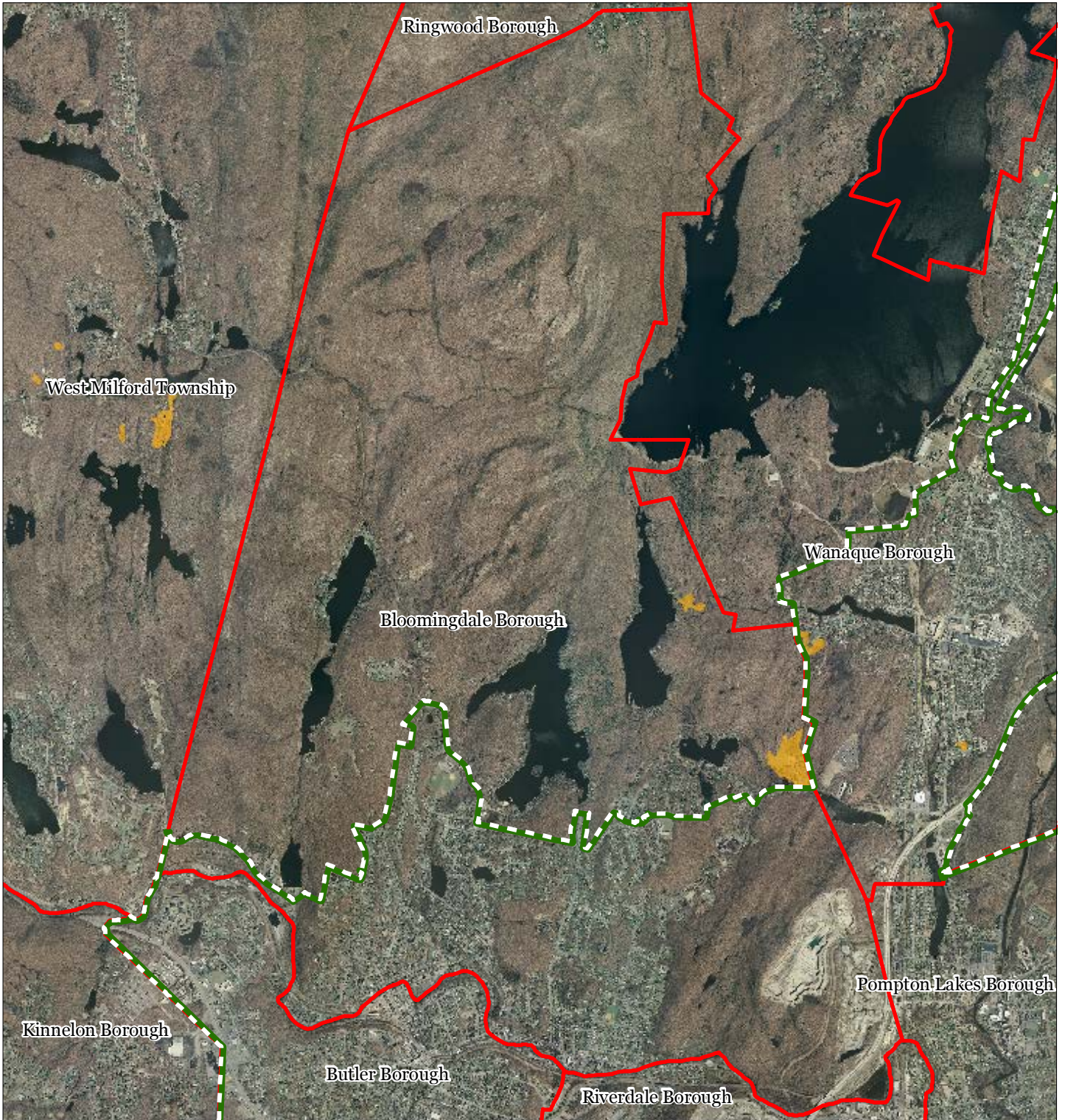
Bloomingdale Borough



1 inch = 0.573 miles



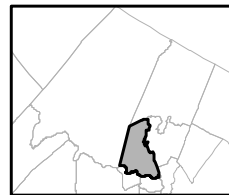
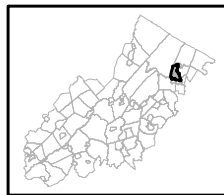
Exhibit BB: Preserved Farms, SADC Easements, All Agricultural Uses



SADC Easements

-  SADC Final
-  SADC Preserved
-  Preserved Farmland
-  Agriculture Uses
-  Preservation Area
-  Municipal Boundaries

Bloomingdale Borough

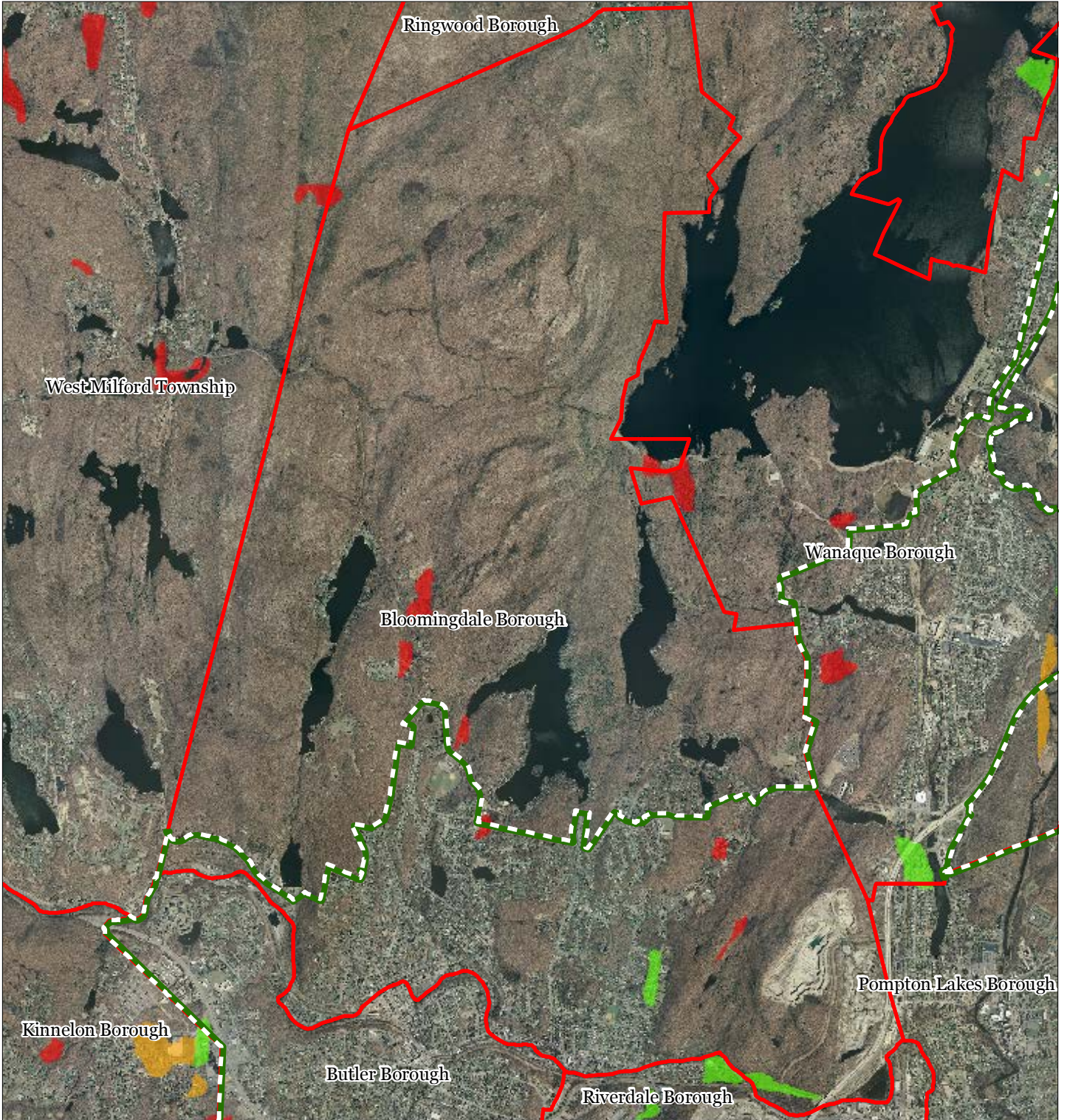


1 inch = 0.573 miles



September 2011

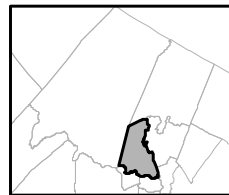
Exhibit CC: Important Farmland Soils



Important Farmland Soils

-  Prime Farmland
-  Farmland of Local Importance
-  Farmland of Statewide Importance
-  Farmland of Unique Importance
-  Preservation Area
-  Municipal Boundaries

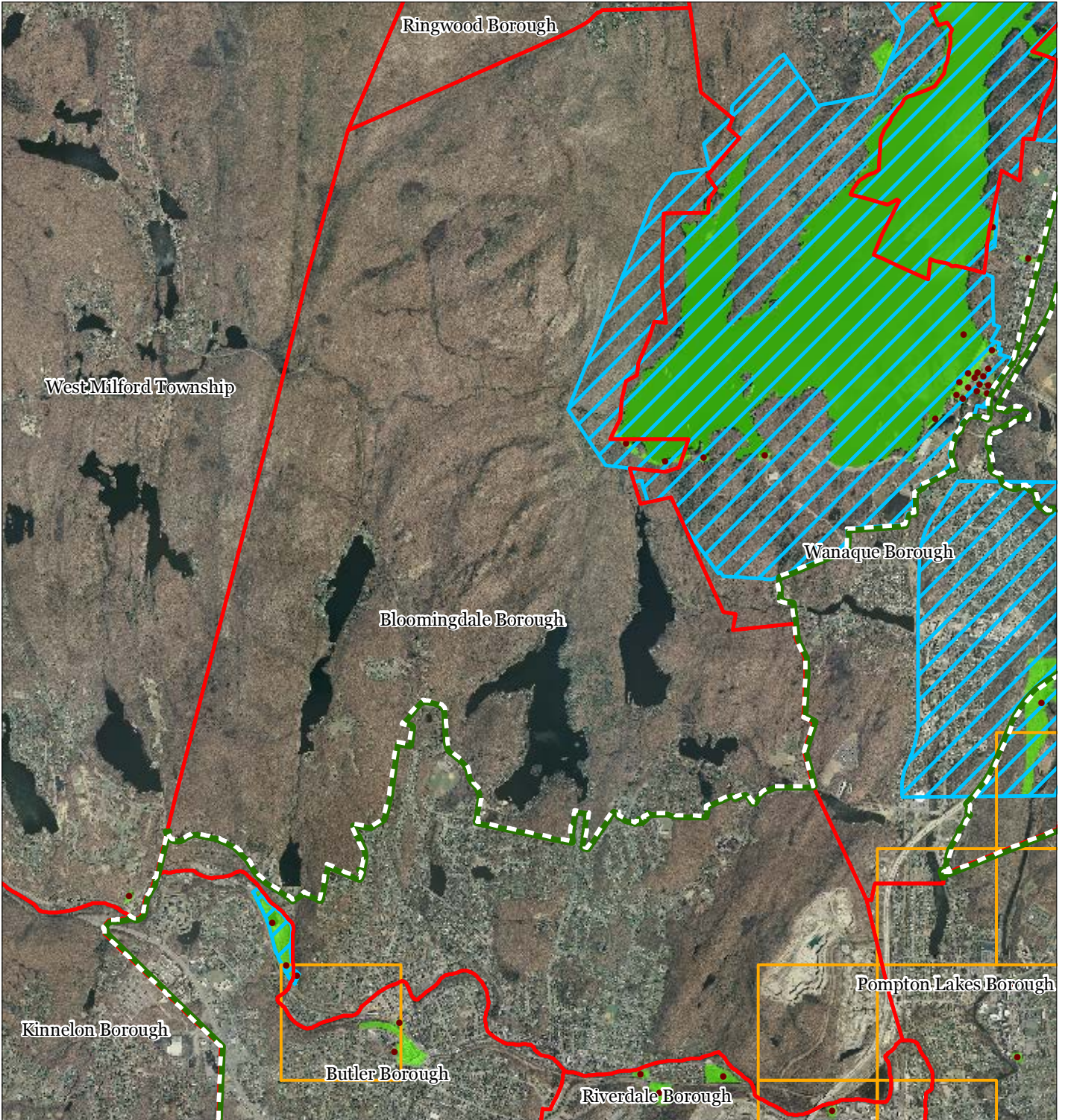
Bloomingdale Borough



1 inch = 0.573 miles

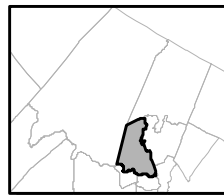
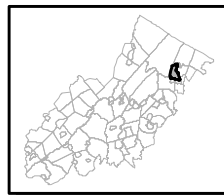


Exhibit DD: Historic, Cultural, and Archaeological Resource Inventory



-  Preservation Area
-  Municipal Boundaries
-  Archaeological Grids (1 sqmi)
-  NJ Historic Districts
-  Historic Property Points
-  Historic Property Polygons

Bloomingdale Borough

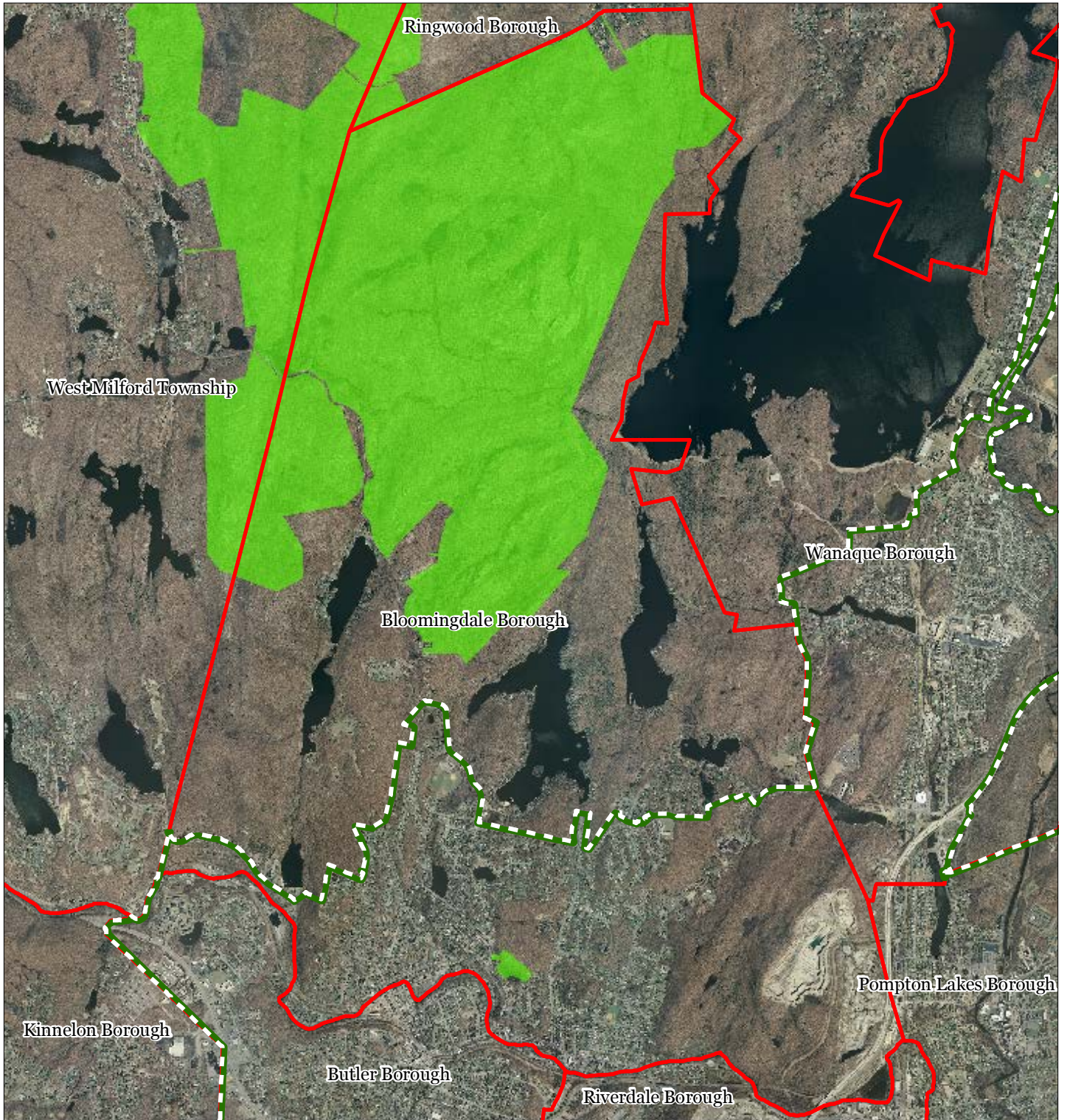


1 inch = 0.573 miles






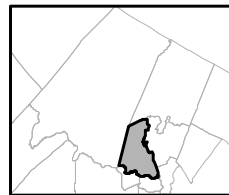
September 2011

Exhibit EE: Baseline Scenic Resources Inventory



Bloomingdale Borough

-  Scenic Resource
-  Municipal Boundaries
-  Preservation Area

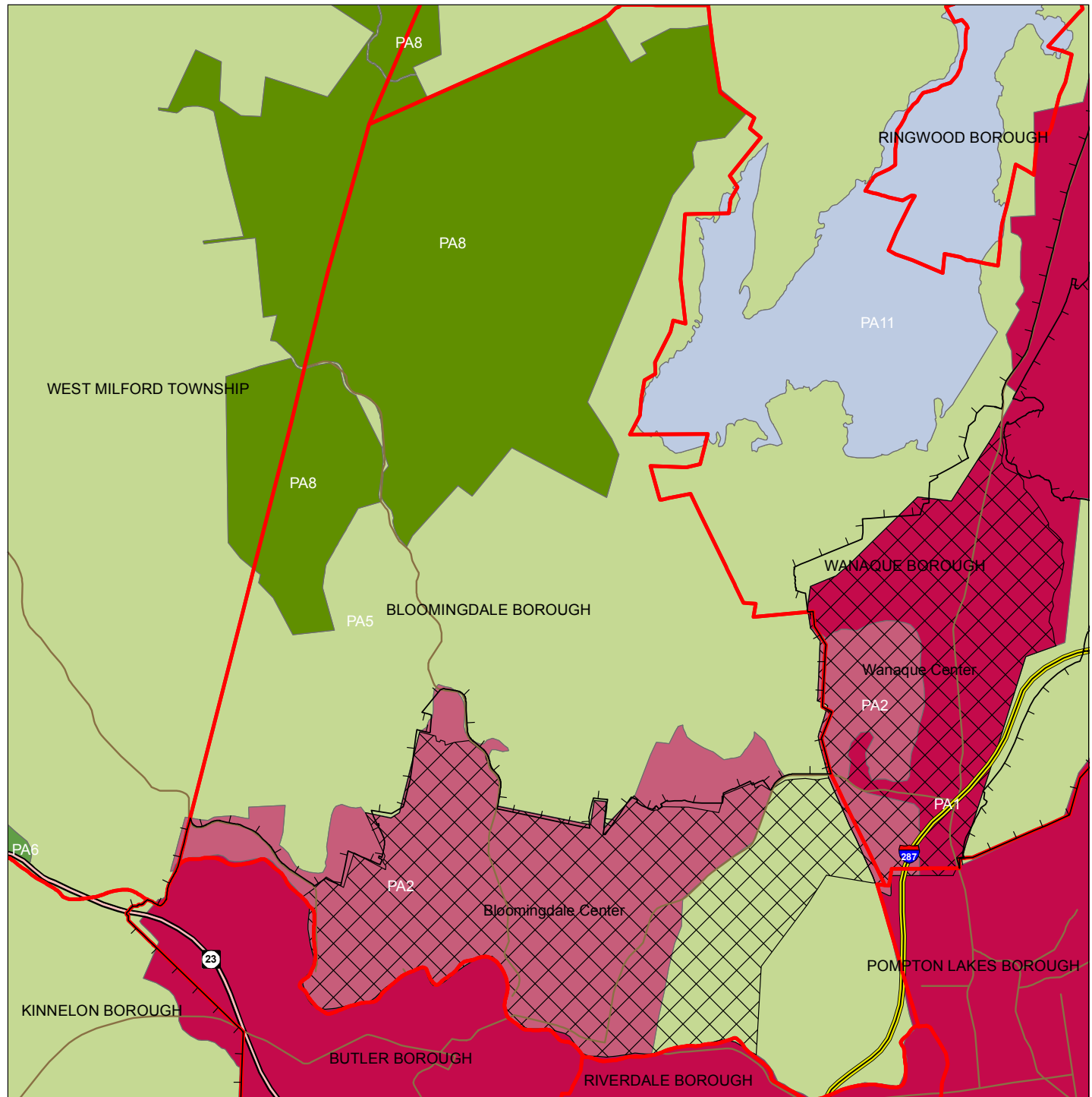


1 inch = 0.573 miles



September 2011

Exhibit FF: SDRP Planning Areas



Legend

- Preservation Area
- Municipal Boundaries
- Interstate Highways
- U.S. Routes
- State Routes
- County Routes
- Designated Centers*

State Planning Areas*

- METROPOLITAN (PA1)
- SUBURBAN (PA2)
- FRINGE (PA3)
- RURAL (PA4)
- RURAL ENVIRONMENTALLY SENSITIVE (PA42)
- ENVIRONMENTALLY SENSITIVE (PA5)
- PARK (PA6)
- FEDERAL PARK (PA7)
- STATE PARK (PA8)
- WATER (PA11)
- MILITARY (PA12)

1 inch equals 0.61 miles

* All designated centers expired on 1/7/2008 except Byram (expires 5/19/2010), Stanhope (expires 10/16/2008), and Sparta and Vernon (expire 7/16/2009). Center designation may be redesignated by the State Planning Commission and the Highlands Council. State Planning Areas are from the State Development and Redevelopment Plan.