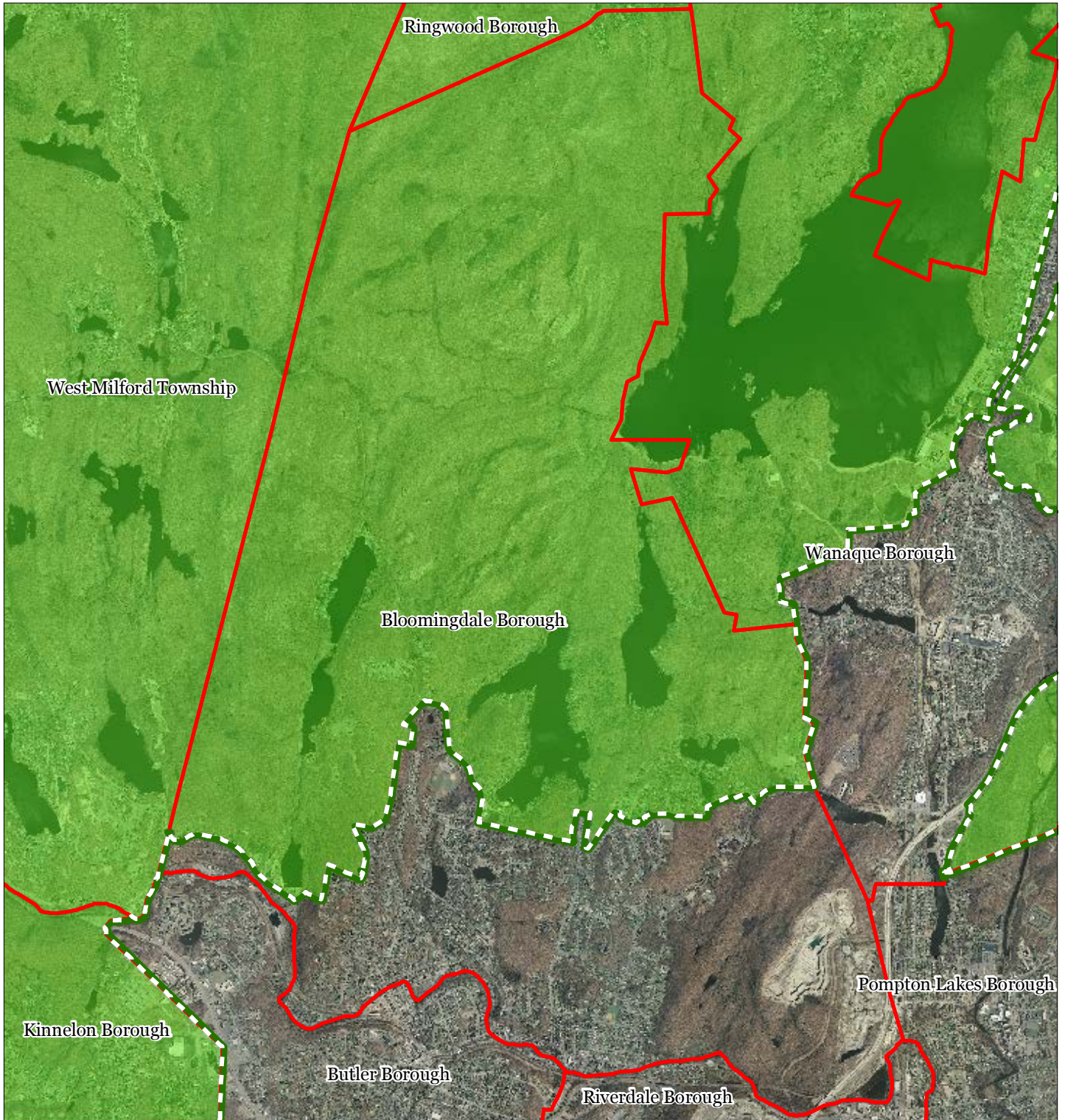


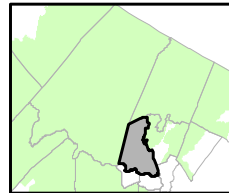


Figure 1: Preservation Area



-  Preservation Area
-  Municipal Boundaries

Bloomingdale Borough



1 inch = 0.573 miles



Figure 2: Land Use Capability Map Zones



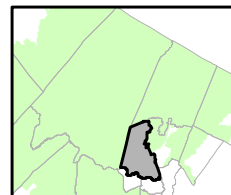
Regional Master Plan Overlay Zone Designation
Zone

- | | |
|--------------------|-----------------------------|
| Protection | Lakes Greater Than 10 acres |
| Conservation | Preservation Area |
| Existing Community | Municipal Boundaries |

Sub-Zone

- | |
|--|
| Existing Community Environmentally Constrained |
| Conservation Environmentally Constrained |
| Lake Community |
| Wildlife Management |

Bloomingdale Borough

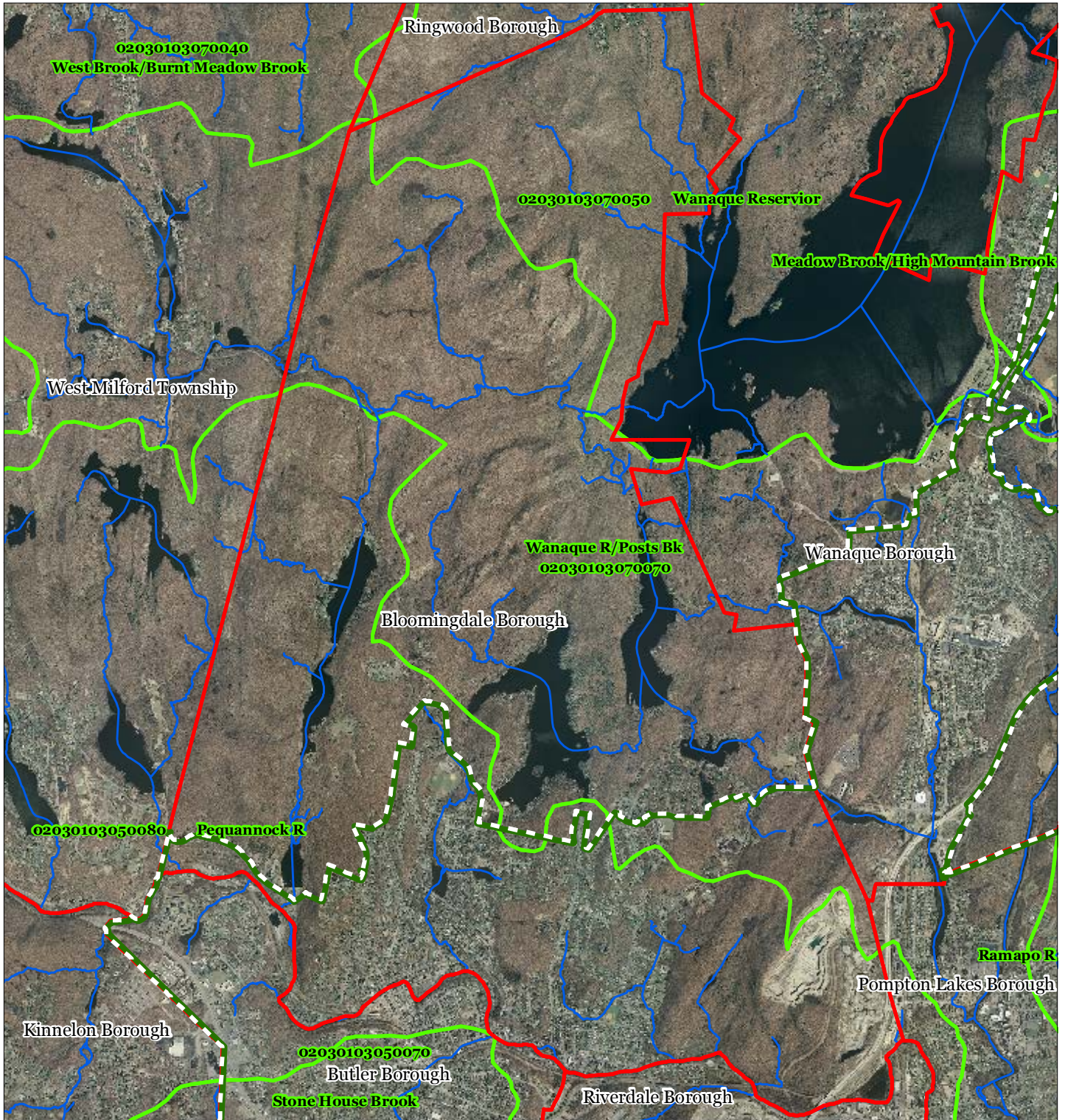






1 inch = 0.573 miles



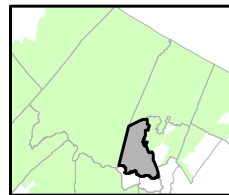
Sept 2011

Figure 3: HUC 14 Boundaries



-  HUC 14 Subwatersheds
-  Stream Centerlines
-  Preservation Area
-  Municipal Boundaries

Bloomingdale Borough

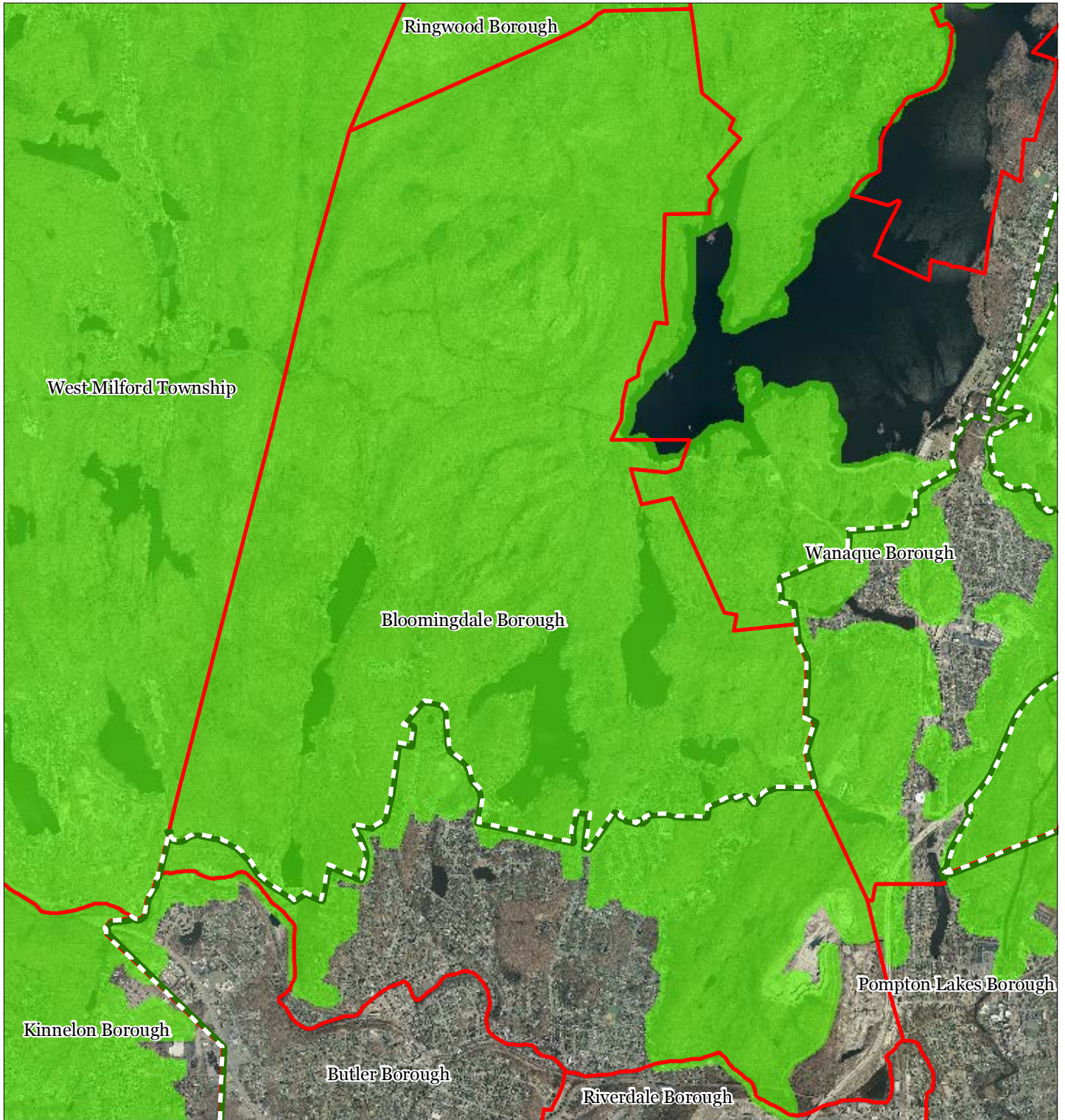


1 inch = 0.573 miles






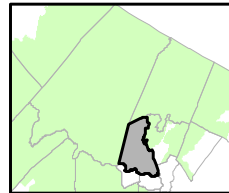
Sept 2011

Figure 4: Forest Resource Area



Bloomingdale Borough

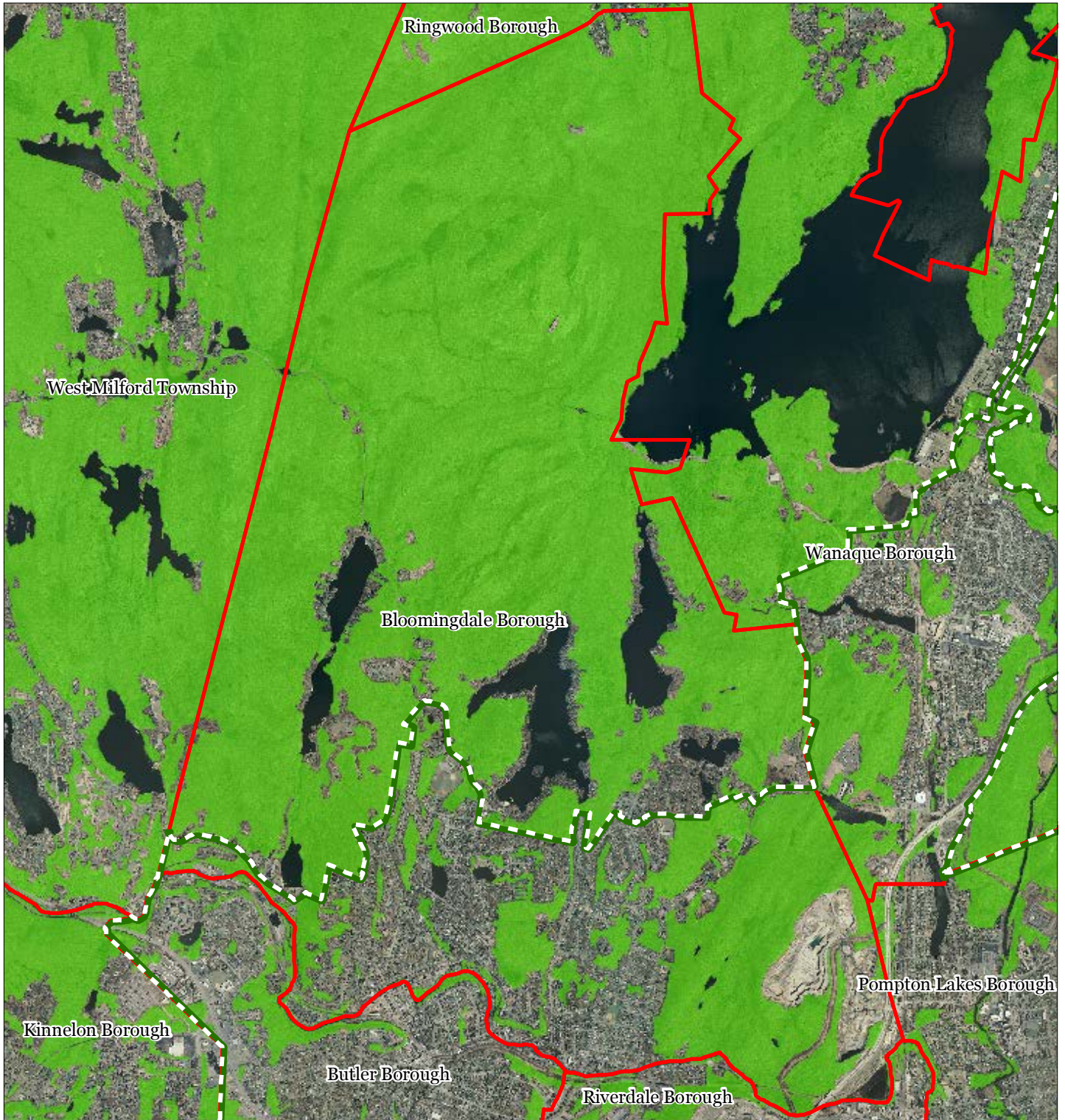
-  Forest Resource Area
-  Preservation Area
-  Municipal Boundaries






1 inch = 0.573 miles

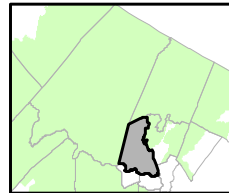


Figure 5: Total Forest Area



Bloomingdale Borough

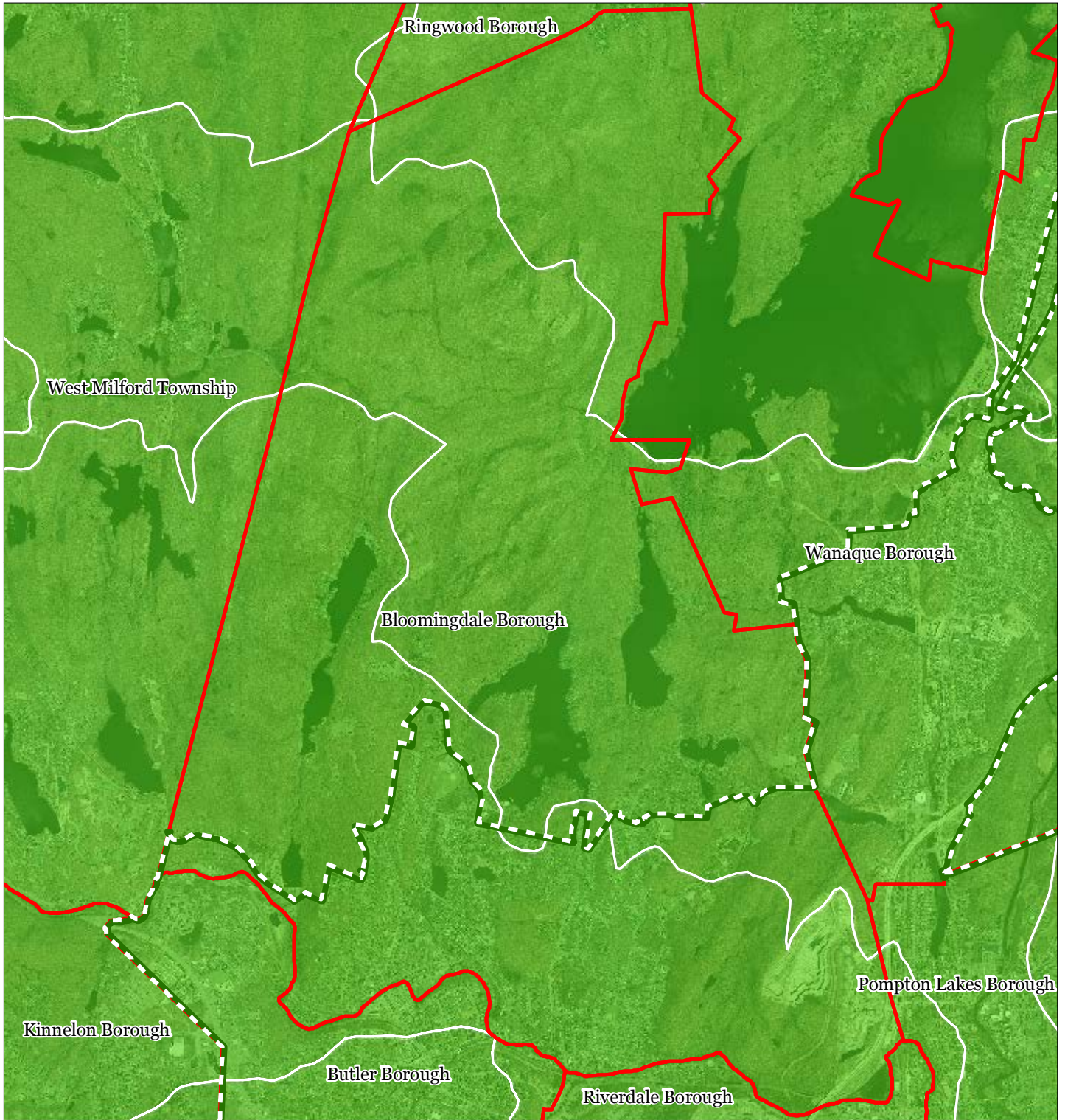
-  Forested Areas
-  Preservation Area
-  Municipal Boundaries



1 inch = 0.573 miles



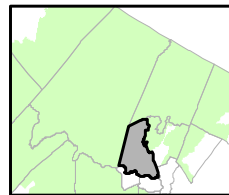
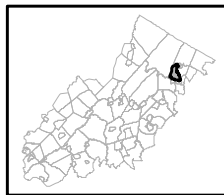
Figure 6: Forest Subwatersheds



Forest Integrity by HUC14 Subwatershed

- Low*
- Moderate*
- High*
- Preservation Area
- Municipal Boundaries

Bloomingdale Borough

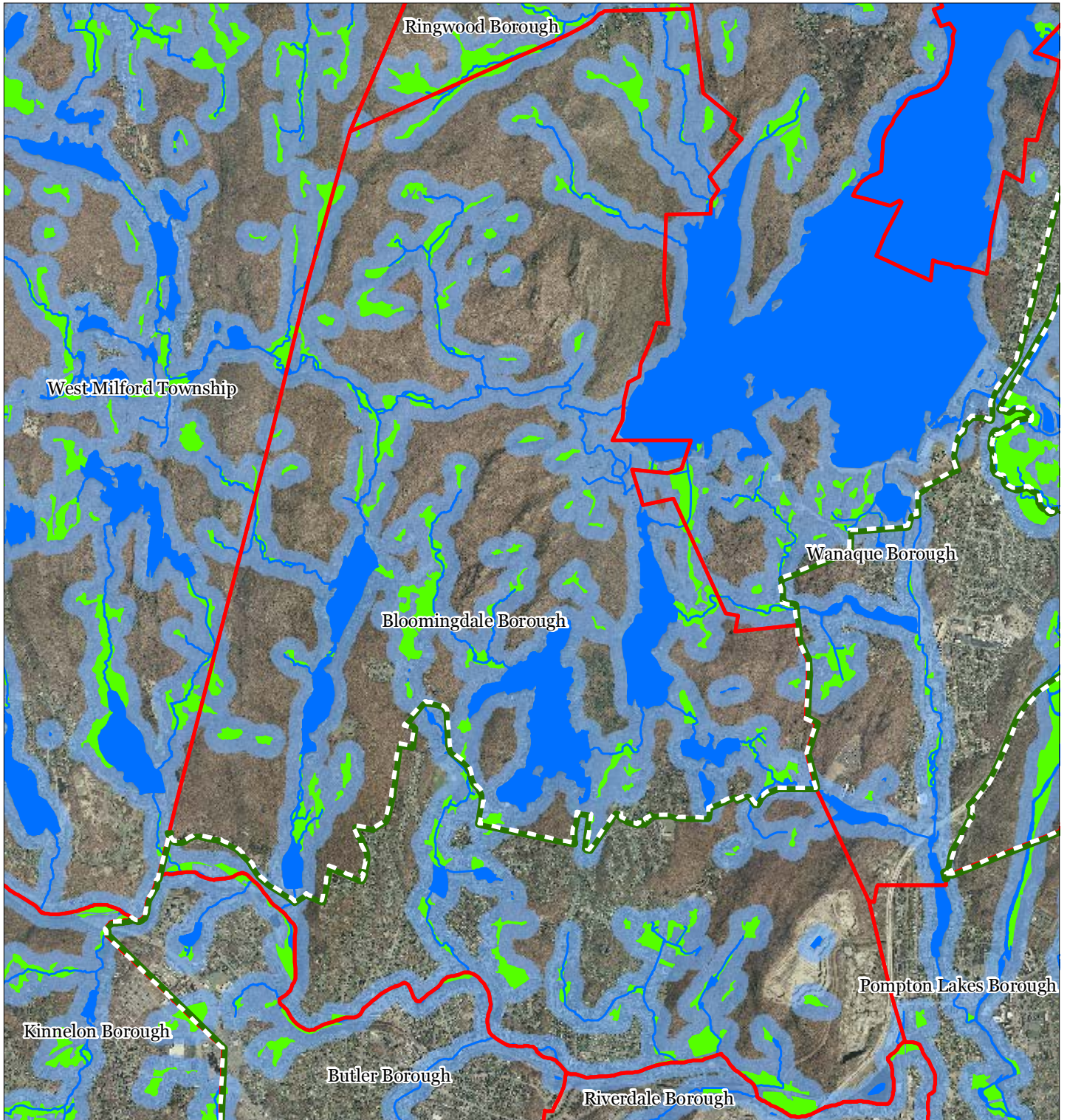


1 inch = 0.573 miles



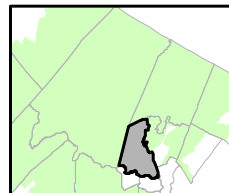
Sept 2011

Figure 7: Highlands Open Waters



Bloomingdale Borough

-  Highlands Open Water Buffers (300ft)
-  Streams
-  Wetlands
-  Lakes & Ponds
-  Preservation Area
-  Municipal Boundaries

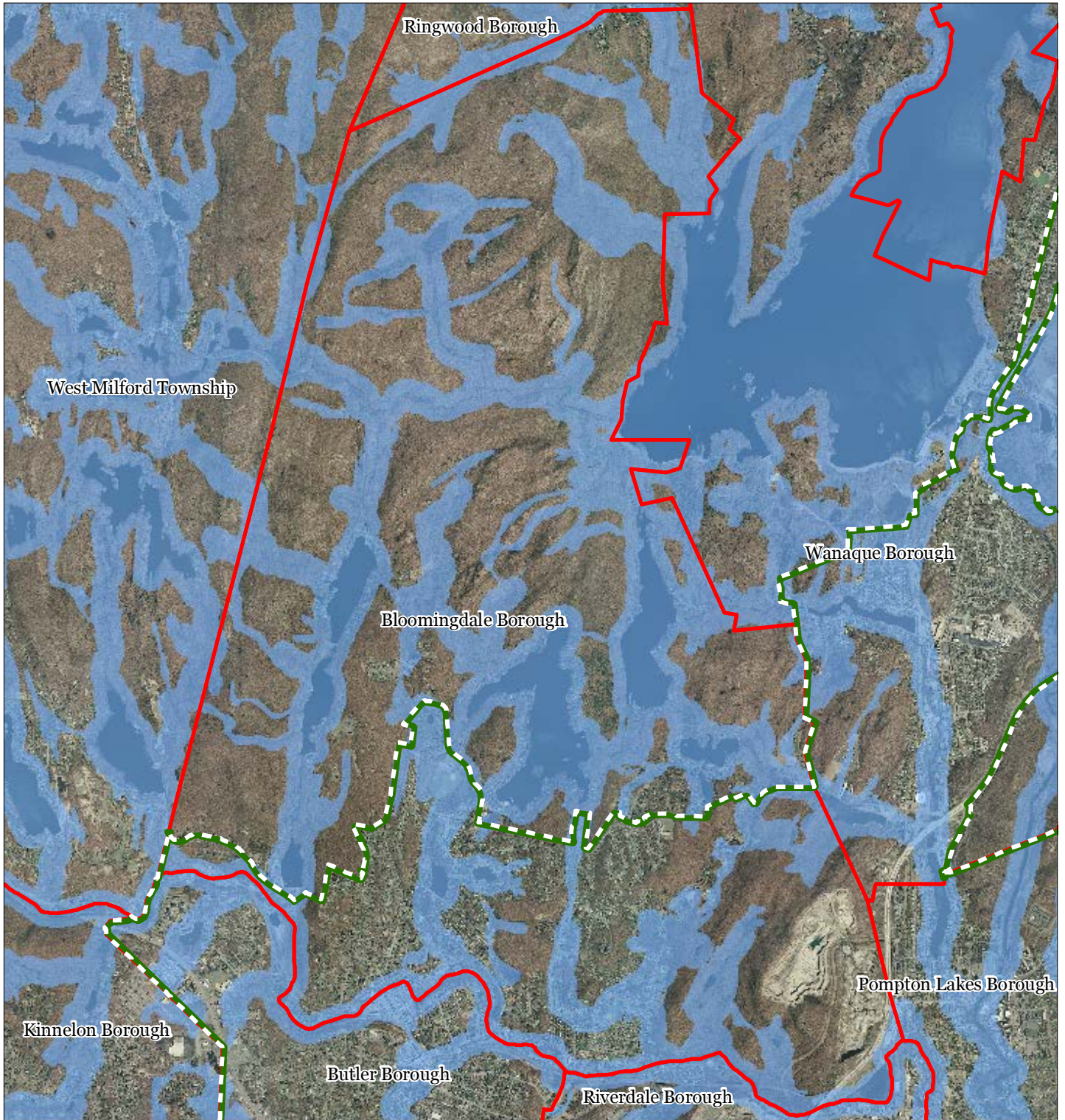


1 inch = 0.573 miles

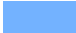




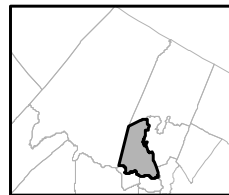
Sept 2011

Figure 8: Highlands Riparian Areas



Bloomingdale Borough

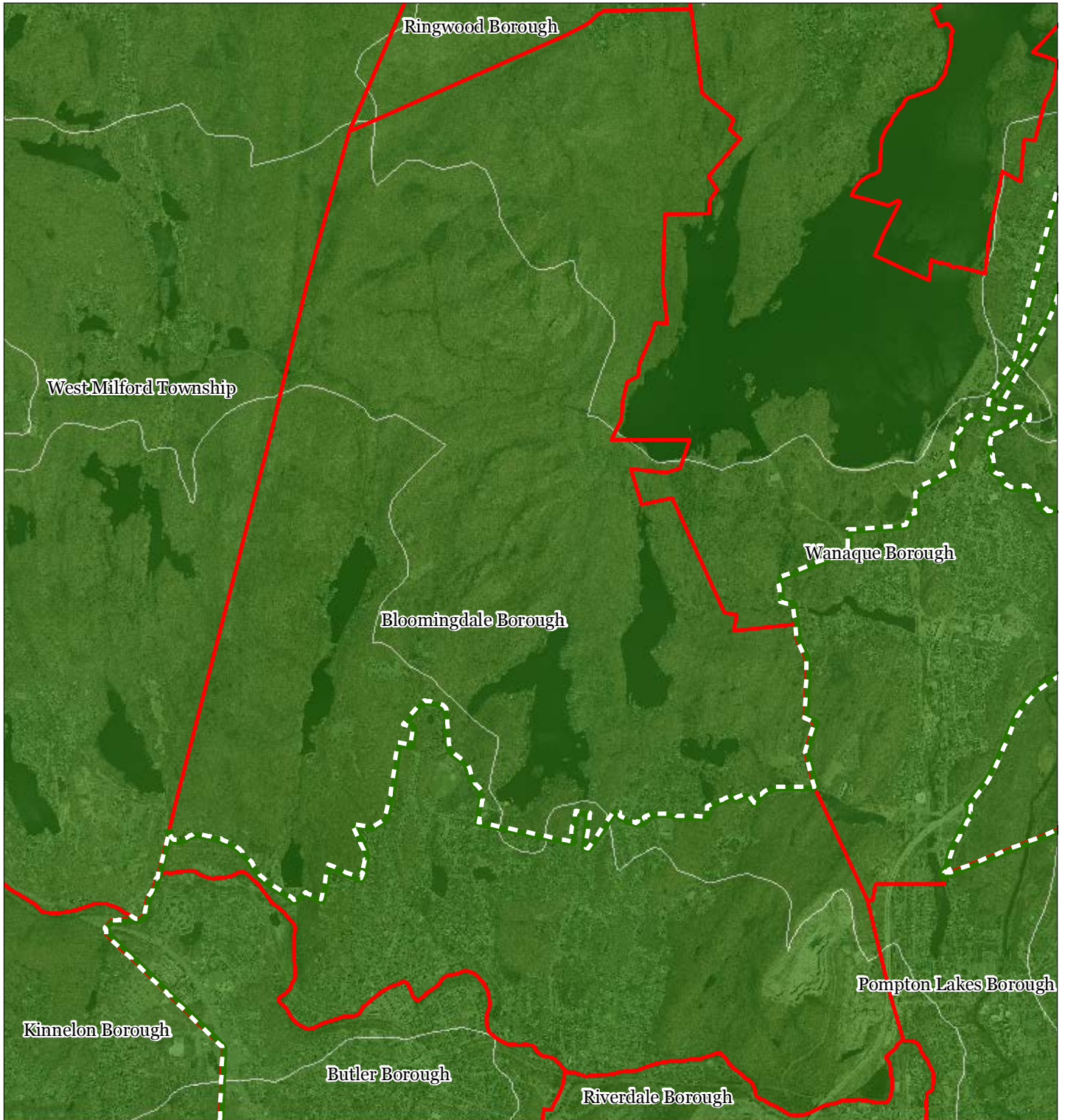
-  Riparian Area
-  Preservation Area
-  Municipal Boundaries



1 inch = 0.573 miles



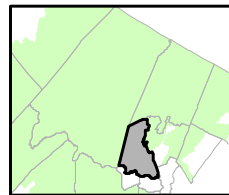
Figure 9: Watershed Values



Watershed Values by HUC14 Subwatershed

- Low
- Moderate
- High
- Preservation Area
- Municipal Boundaries

Bloomingdale Borough

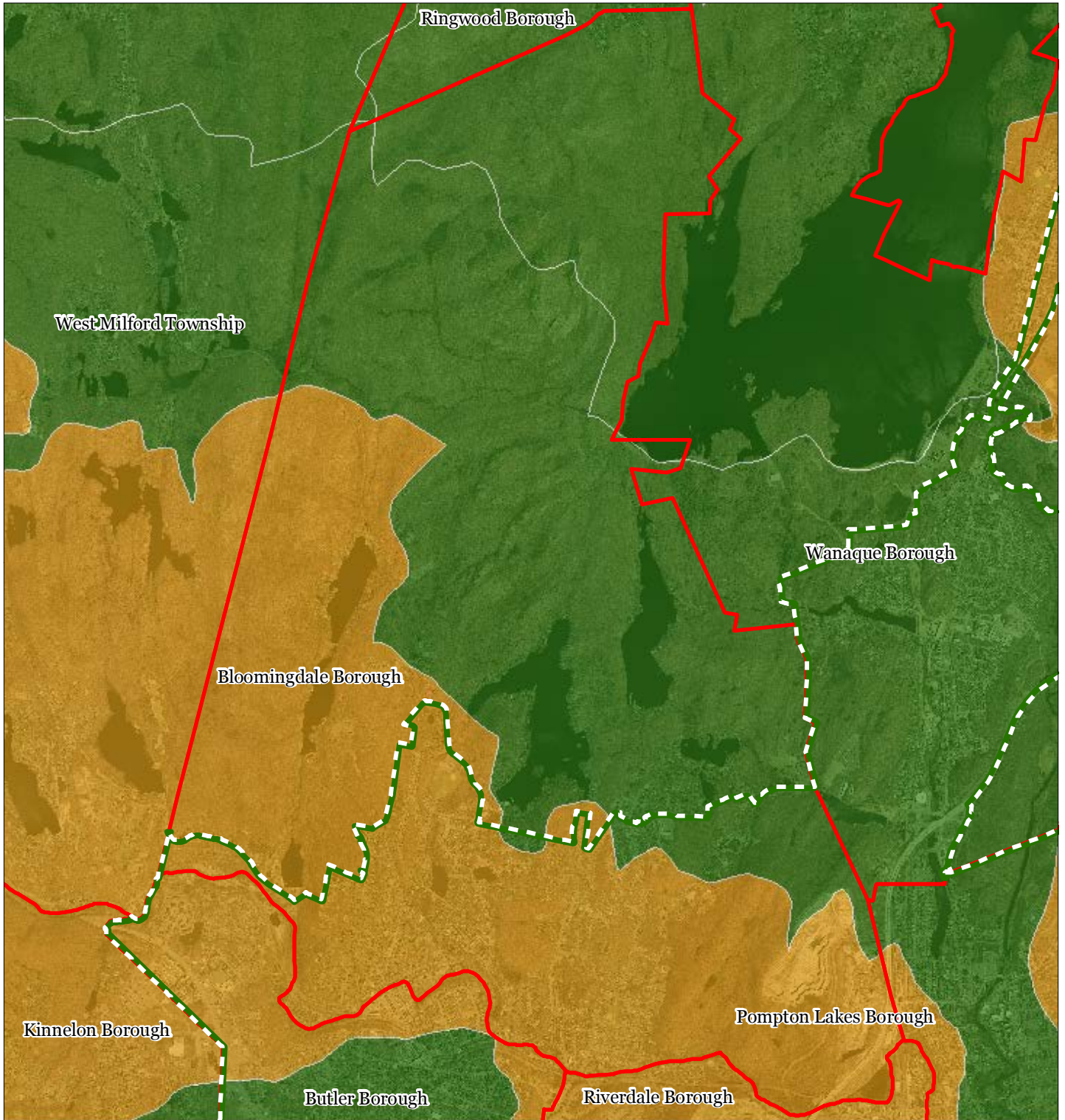


1 inch = 0.573 miles



Sept 2011

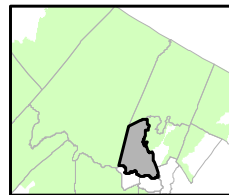
Figure 10: Riparian Integrity



Riparian Integrity by HUC14 Subwatershed

- Low
- Moderate
- High
- Preservation Area
- Municipal Boundaries

Bloomingdale Borough

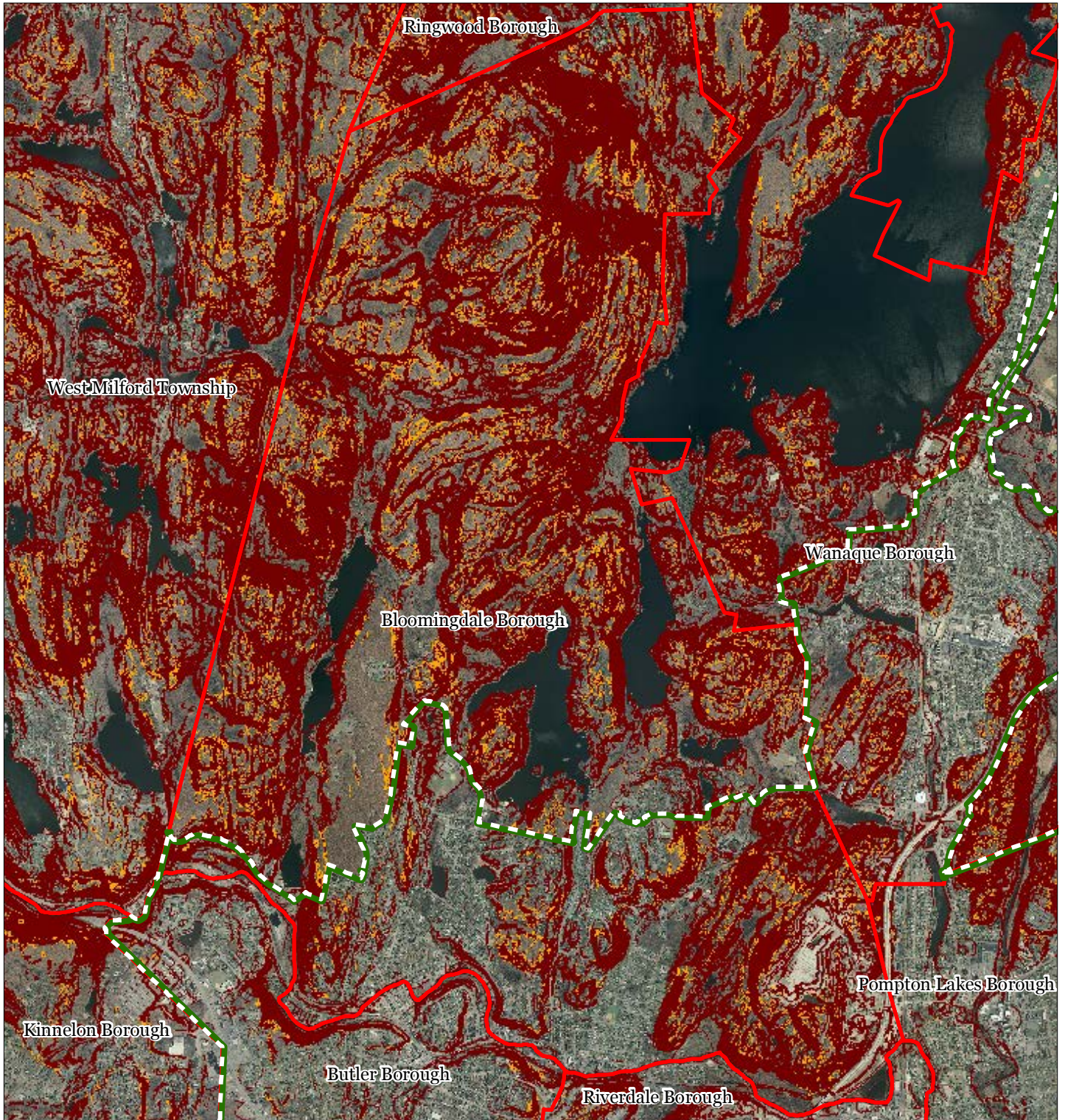


1 inch = 0.573 miles







Sept 2011

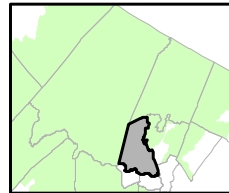
Figure 11: Steep Slope Protection Areas



Steep Slopes

-  Moderate
-  Severe
-  Preservation Area
-  Municipal Boundaries

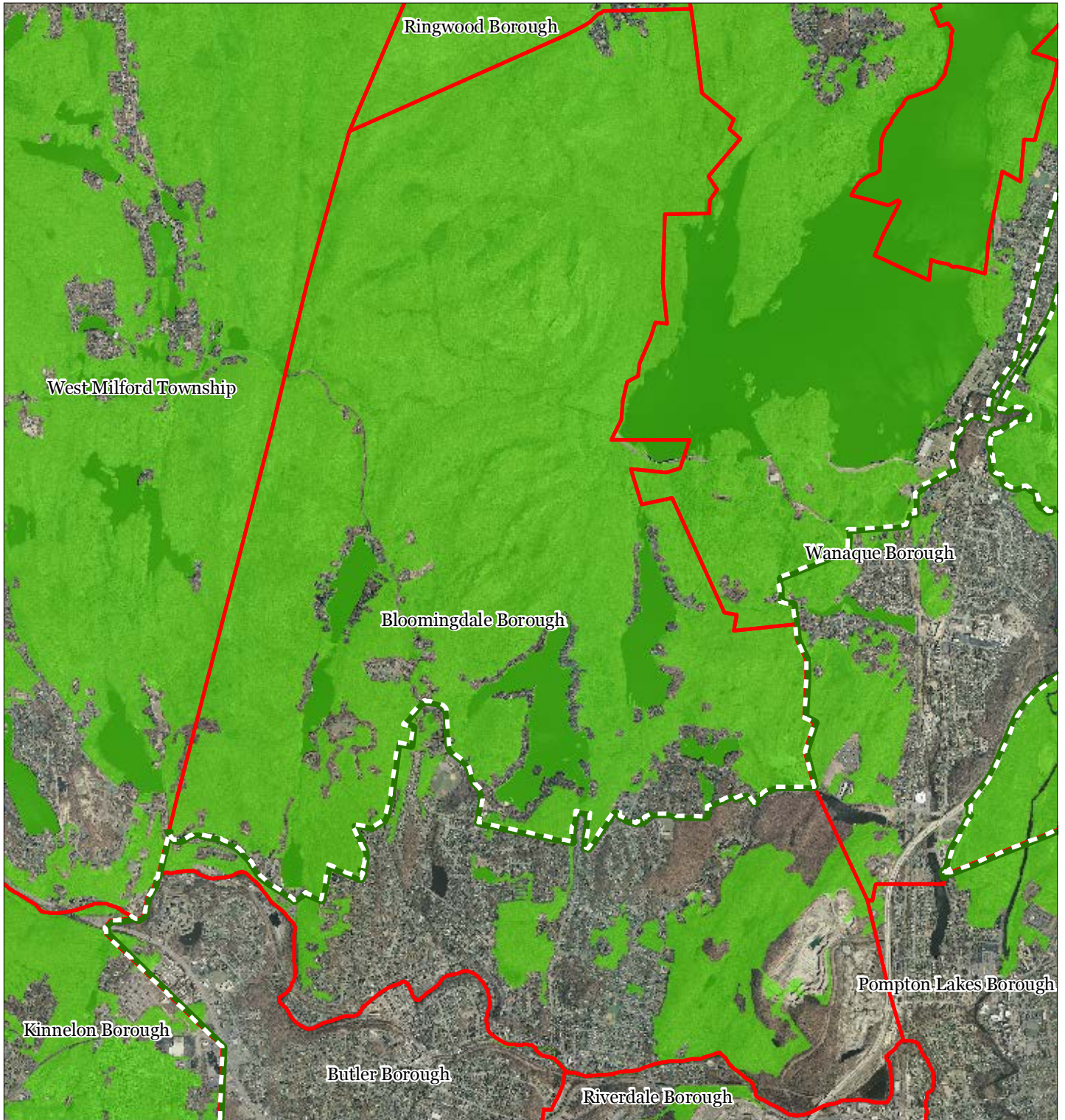
Bloomingdale Borough






1 inch = 0.573 miles

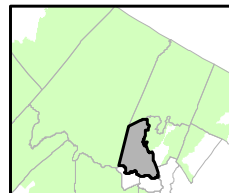


Figure 12: Critical Wildlife Habitat



-  Critical Wildlife Habitat
-  Preservation Area
-  Municipal Boundaries

Bloomingdale Borough

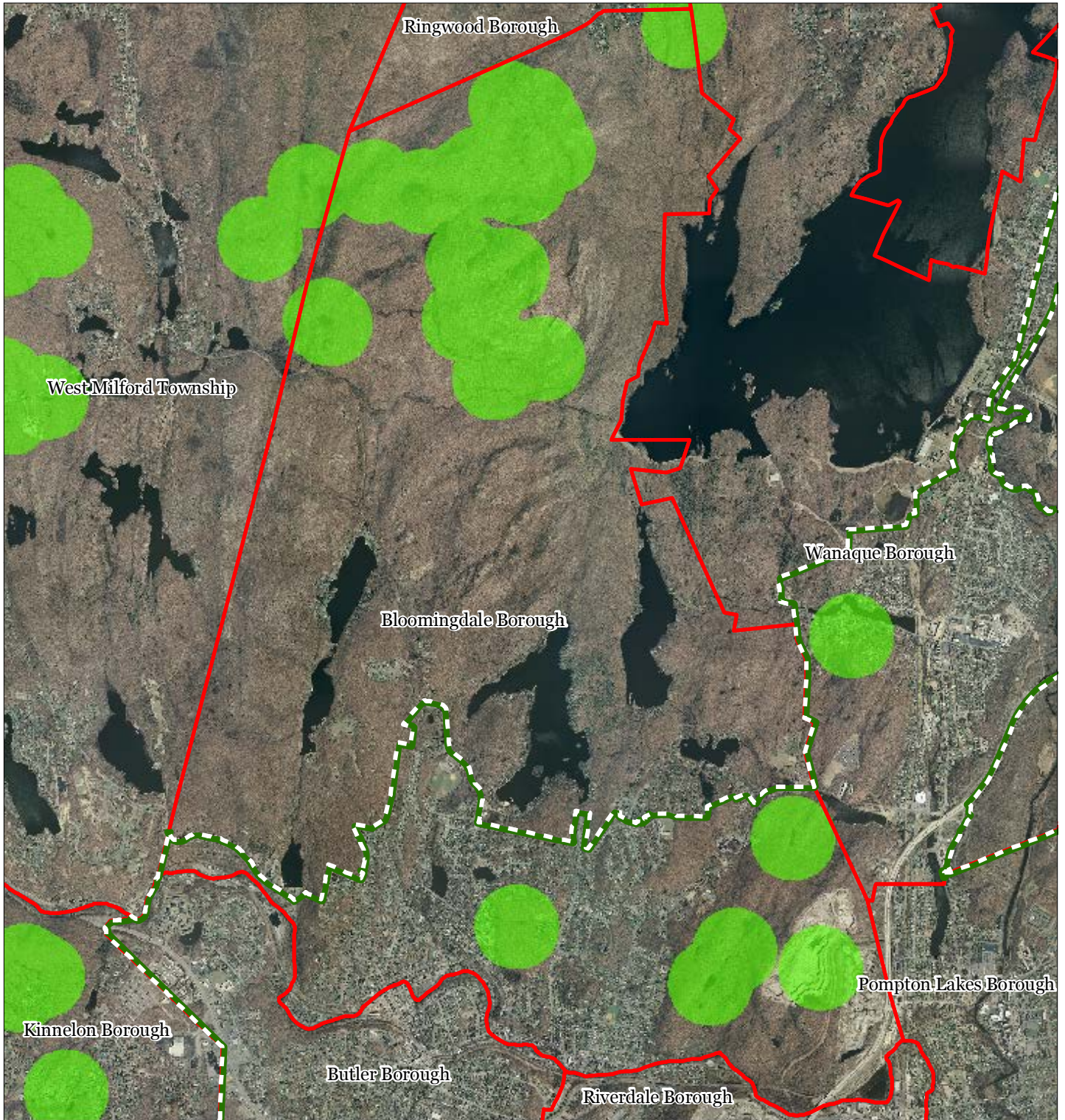


1 inch = 0.573 miles






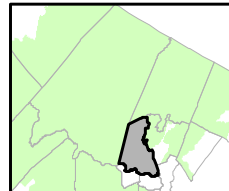
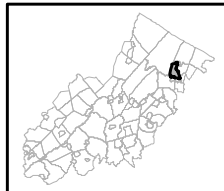
Sept 2011

Figure 14: Vernal Pools



Bloomingdale Borough

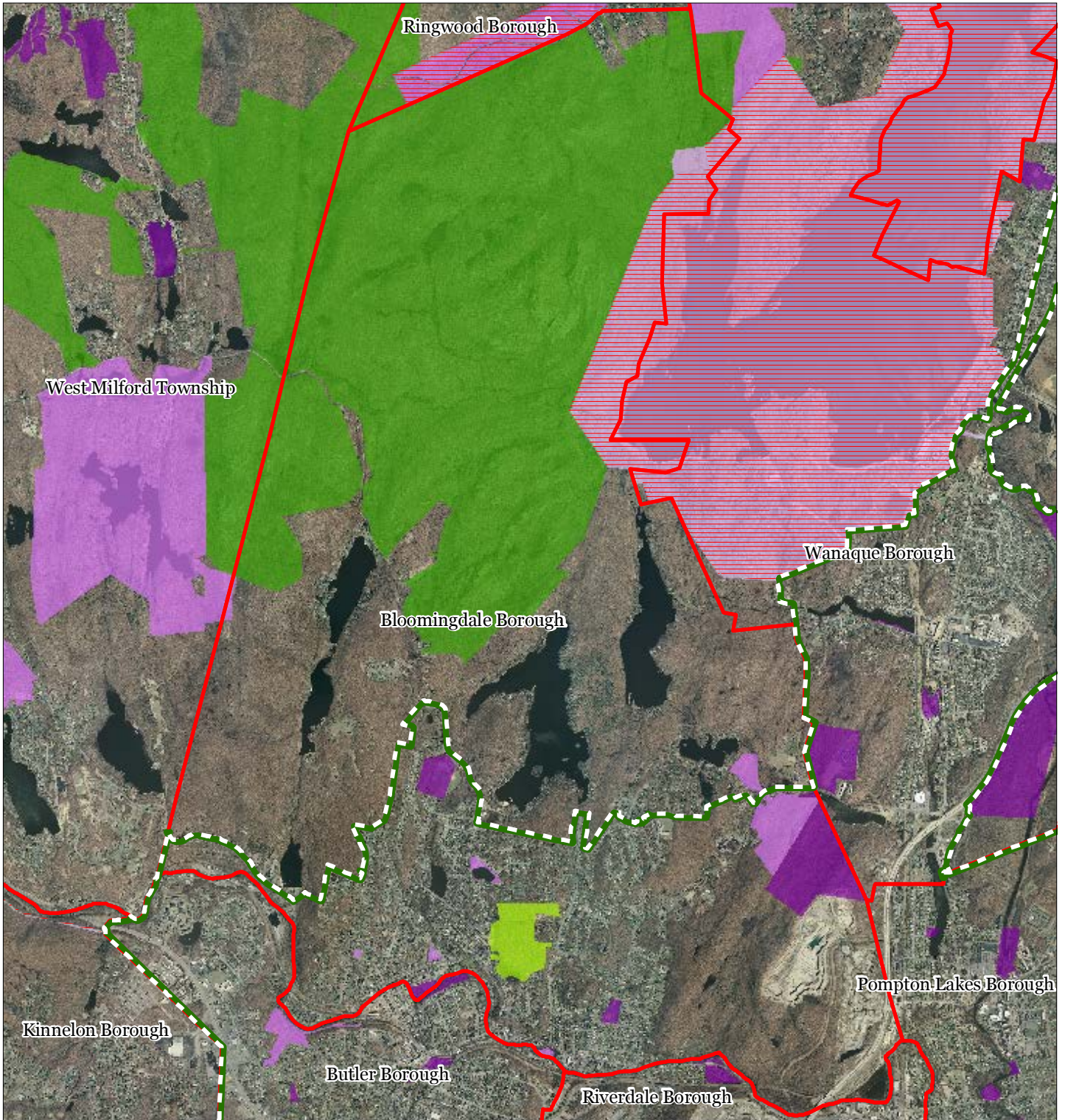
-  Vernal Pools + 1000ft Buffer
-  Preservation Area
-  Municipal Boundaries



1 inch = 0.573 miles

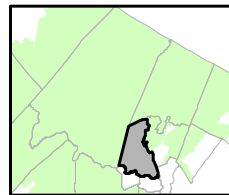


Figure 15: Preserved Lands



- | | |
|---|-------------------------------|
| Preserved Lands | Conservation Easements |
| Federal Open Space | Green Acres |
| State Open Space | SADC Easements |
| County Open Space | SADC Final |
| Municipal Open Space | SADC Preserved |
| Non-Profit/Private Open Space | Municipal Boundaries |
| Water Supply Watershed Lands | Preservation Area |
| Preserved Farmland | |
| Highlands Transfer of Development Lands | |

Bloomingdale Borough

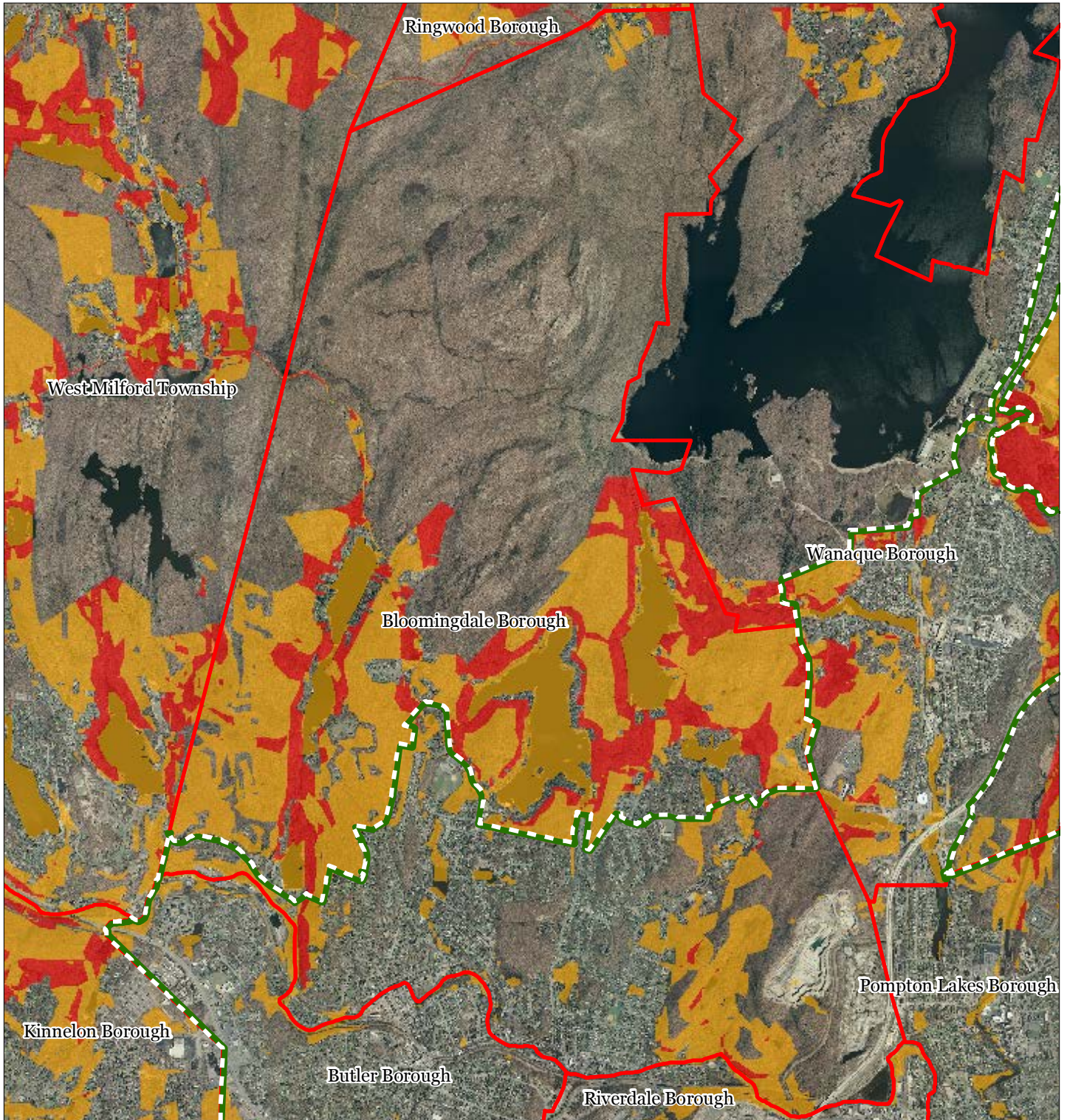


1 inch = 0.573 miles



Sept 2011

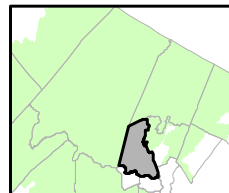
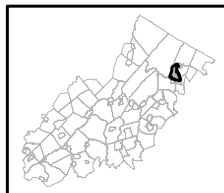
Figure 16: Highlands Conservation Priority Areas



Bloomingdale Borough

Conservation Priority Area

- Moderate
- High
- Preservation Area
- Municipal Boundaries

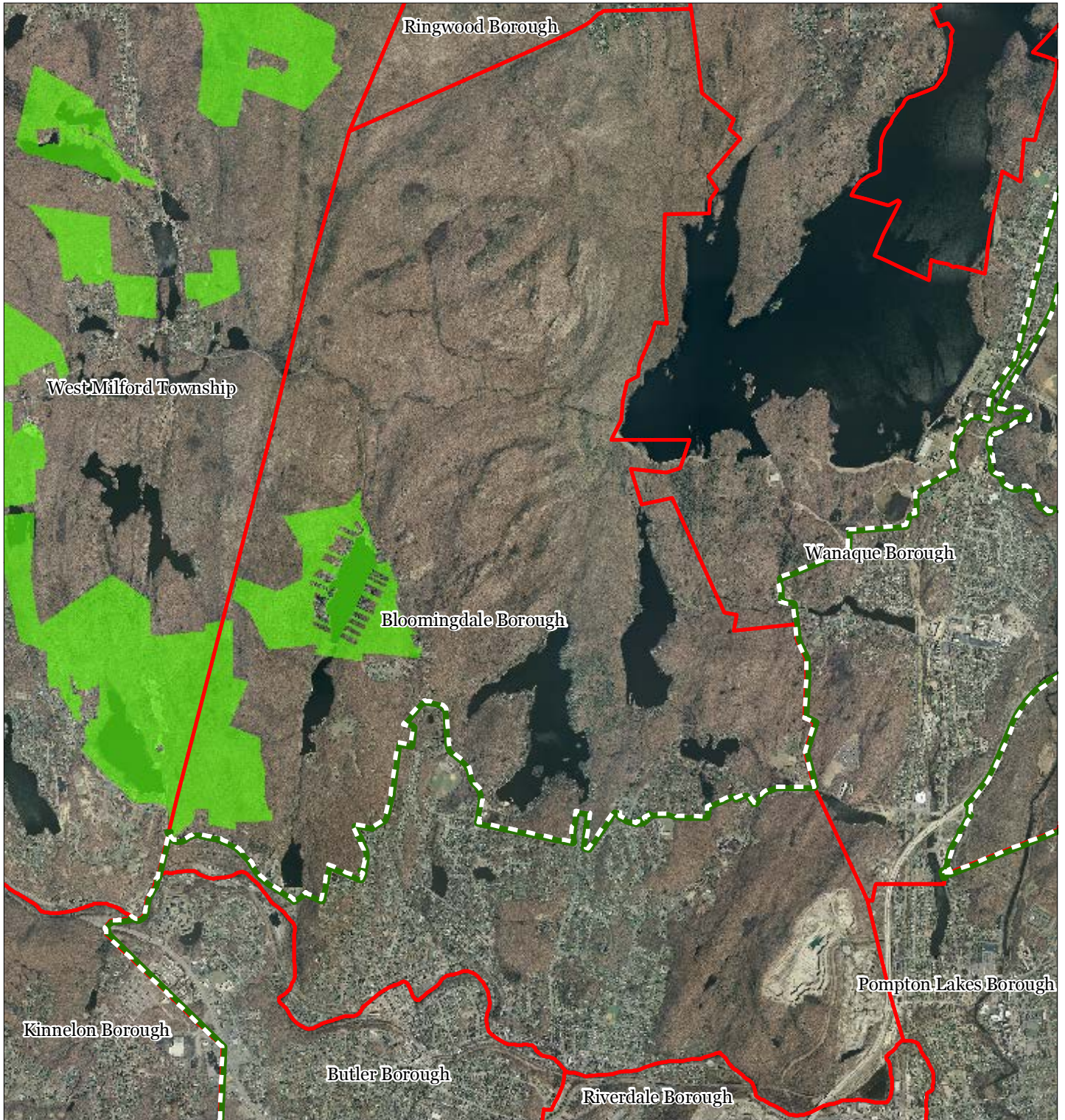


1 inch = 0.573 miles






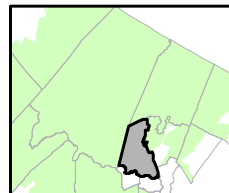
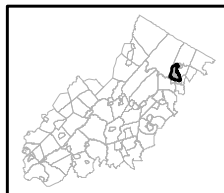
Sept 2011

Figure 17: Highlands Special Environmental Zone



Bloomingdale Borough

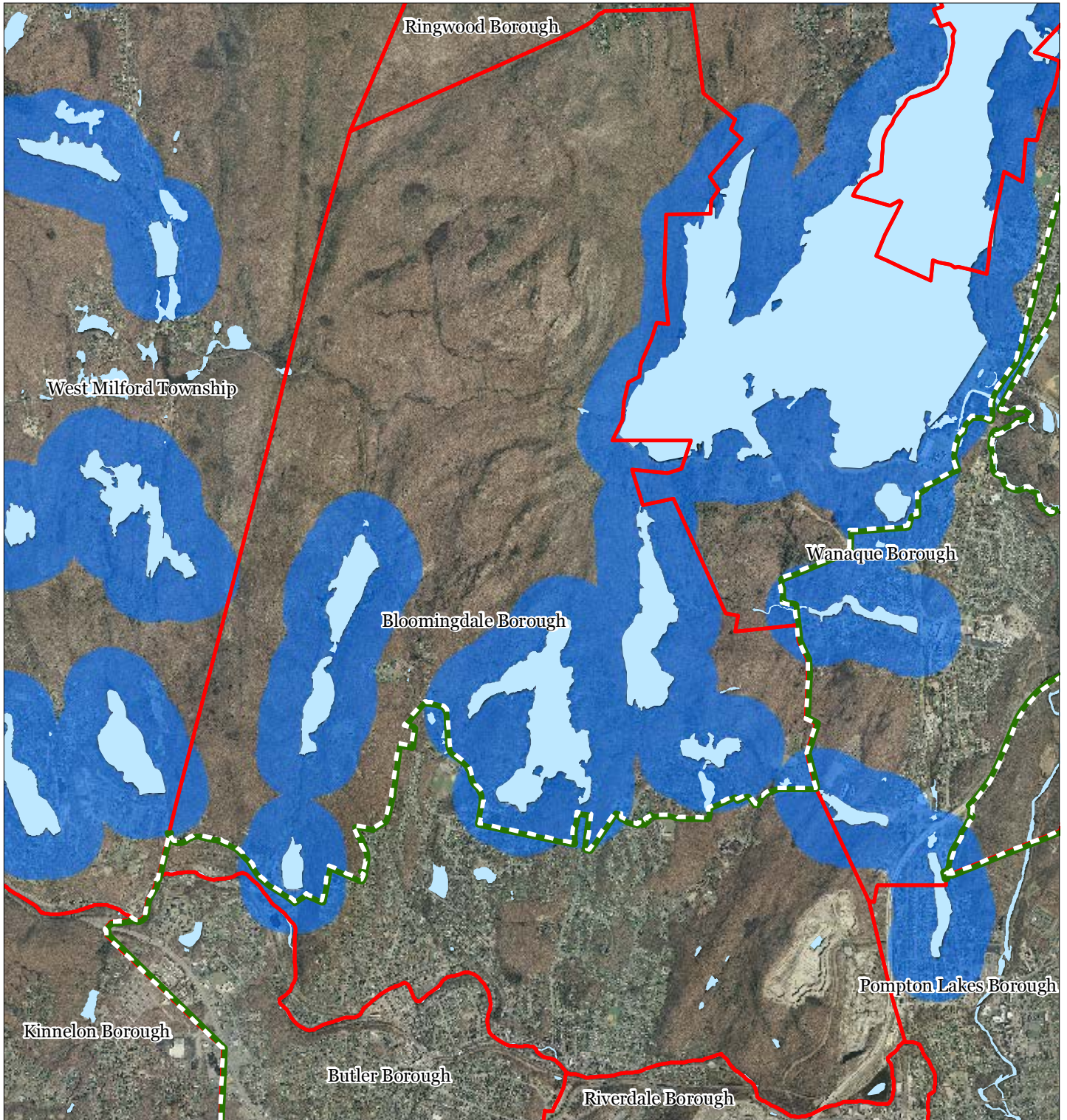
-  Special Environmental Zone
-  Preservation Area
-  Municipal Boundaries

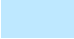





1 inch = 0.573 miles

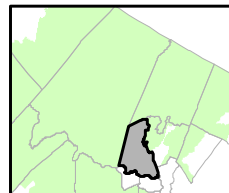
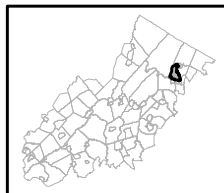


Figure 19: Lake Management Area



-  Lakes & Ponds
-  Lake Management Area
-  Preservation Area
-  Municipal Boundaries

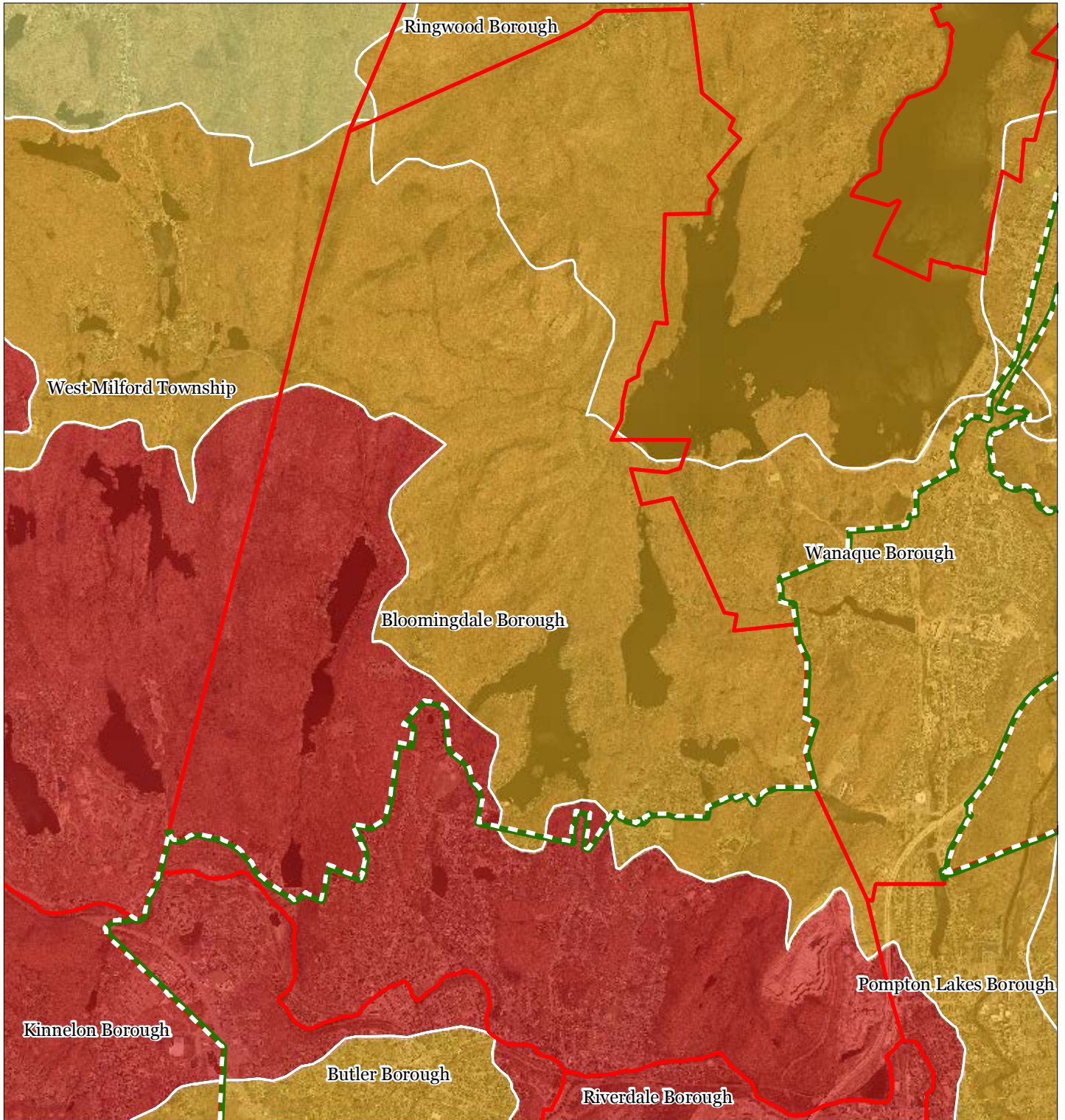
Bloomingdale Borough



1 inch = 0.573 miles

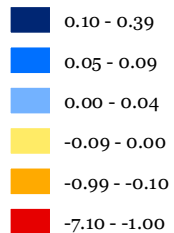


Figure 20: Net Water Availability



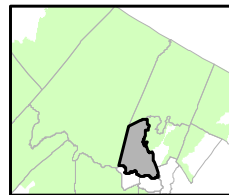
Net Water Availability By HUC14

Million Gallons Per Day (MGD)



- Preservation Area
- Municipal Boundaries

Bloomingdale Borough

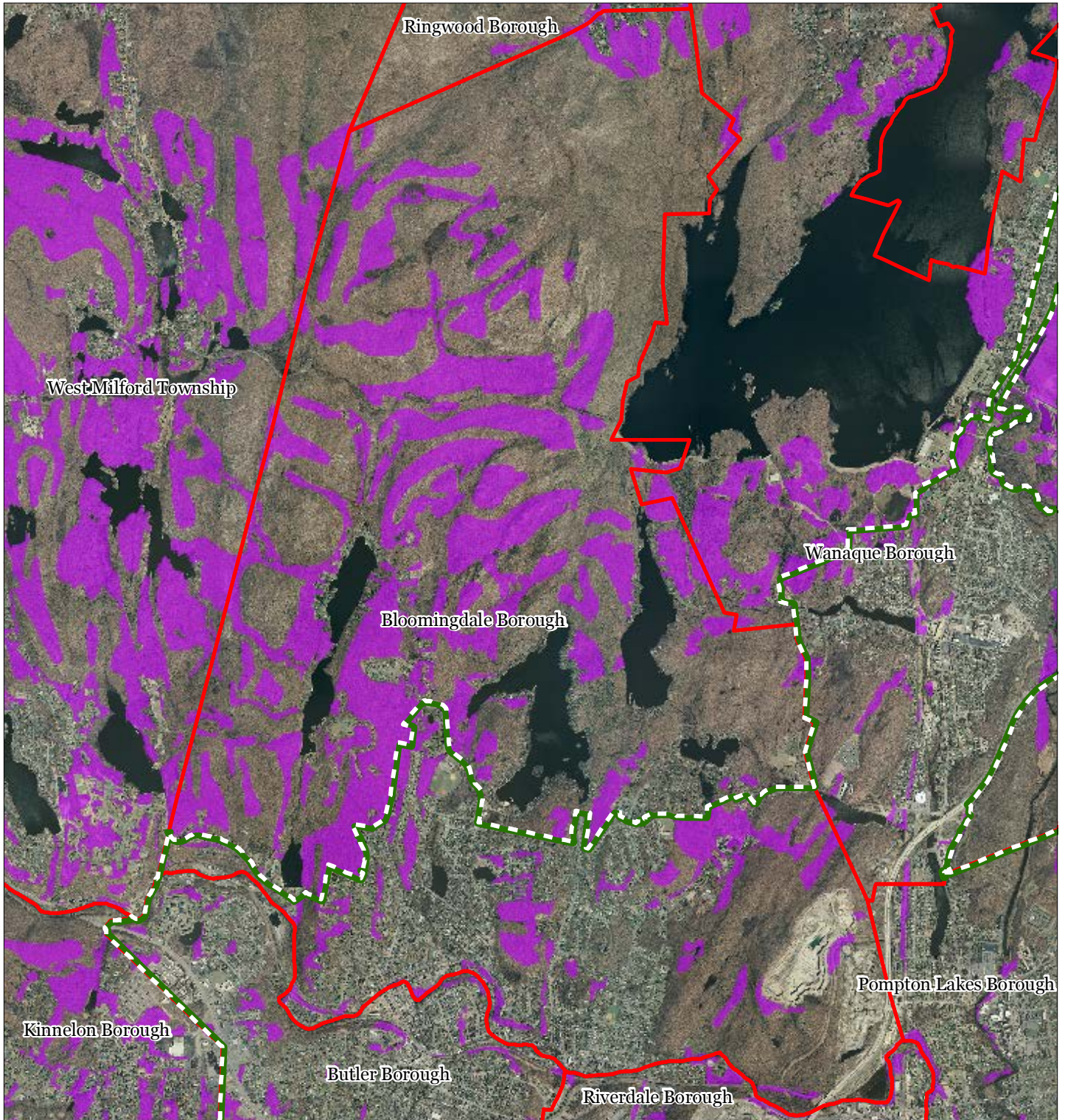


1 inch = 0.573 miles






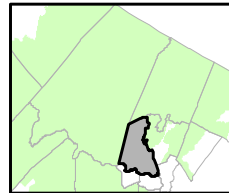
Sept 2011

Figure 21: Prime Ground Water Recharge Areas



Bloomingdale Borough

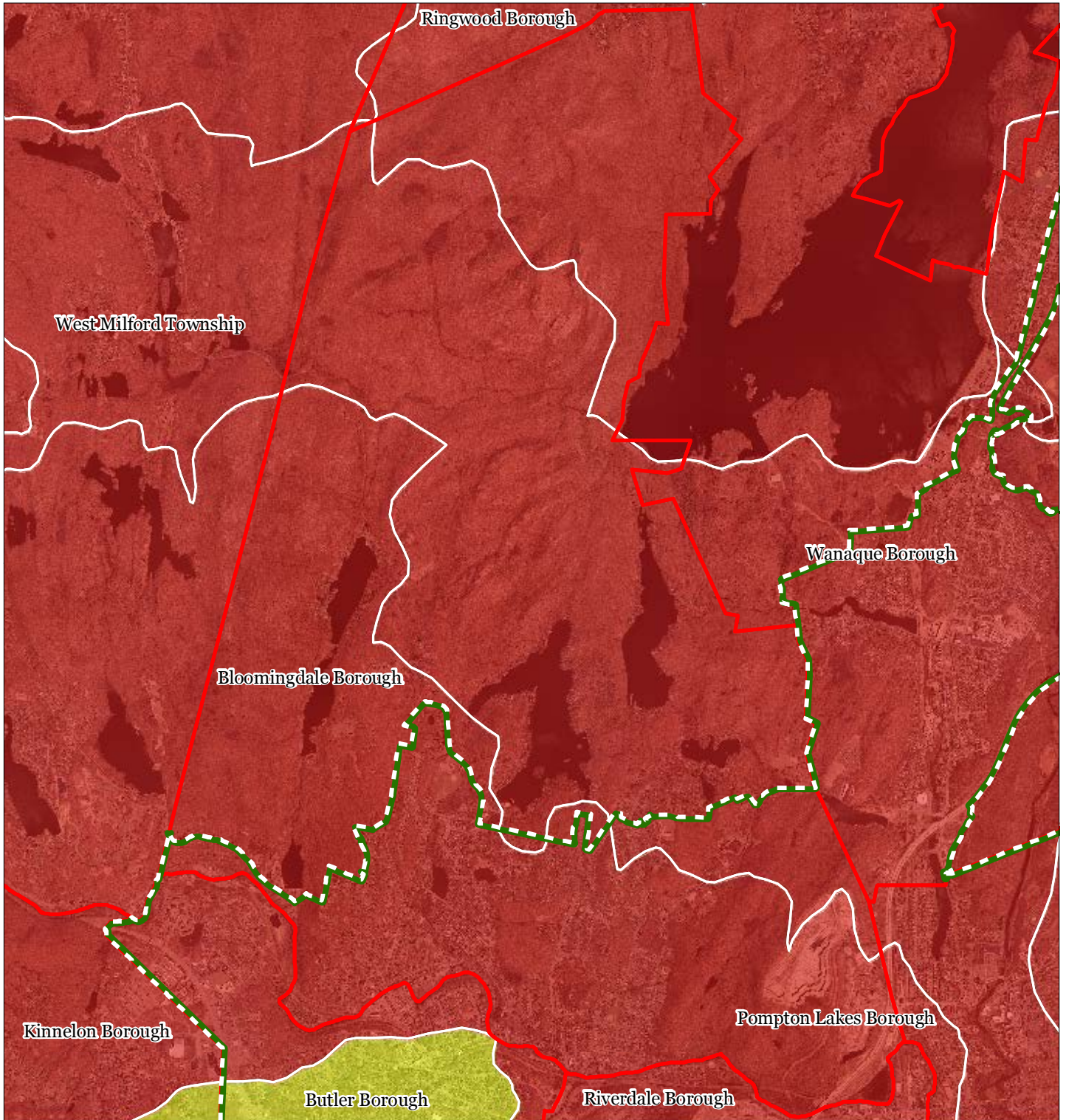
-  Prime Groundwater Recharge Areas
-  Preservation Area
-  Municipal Boundaries



1 inch = 0.573 miles



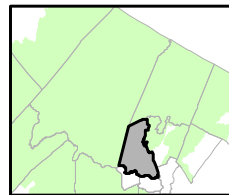
Figure 22: HUC 14s on NJDEP Impaired Waters List



Impaired Waters Overall Assessment by HUC14 Subwatershed

Bloomingdale Borough

- Non Impacted
- Insufficient Data Available
- Moderate
- Water Quality Impaired
- Preservation Area
- Municipal Boundaries

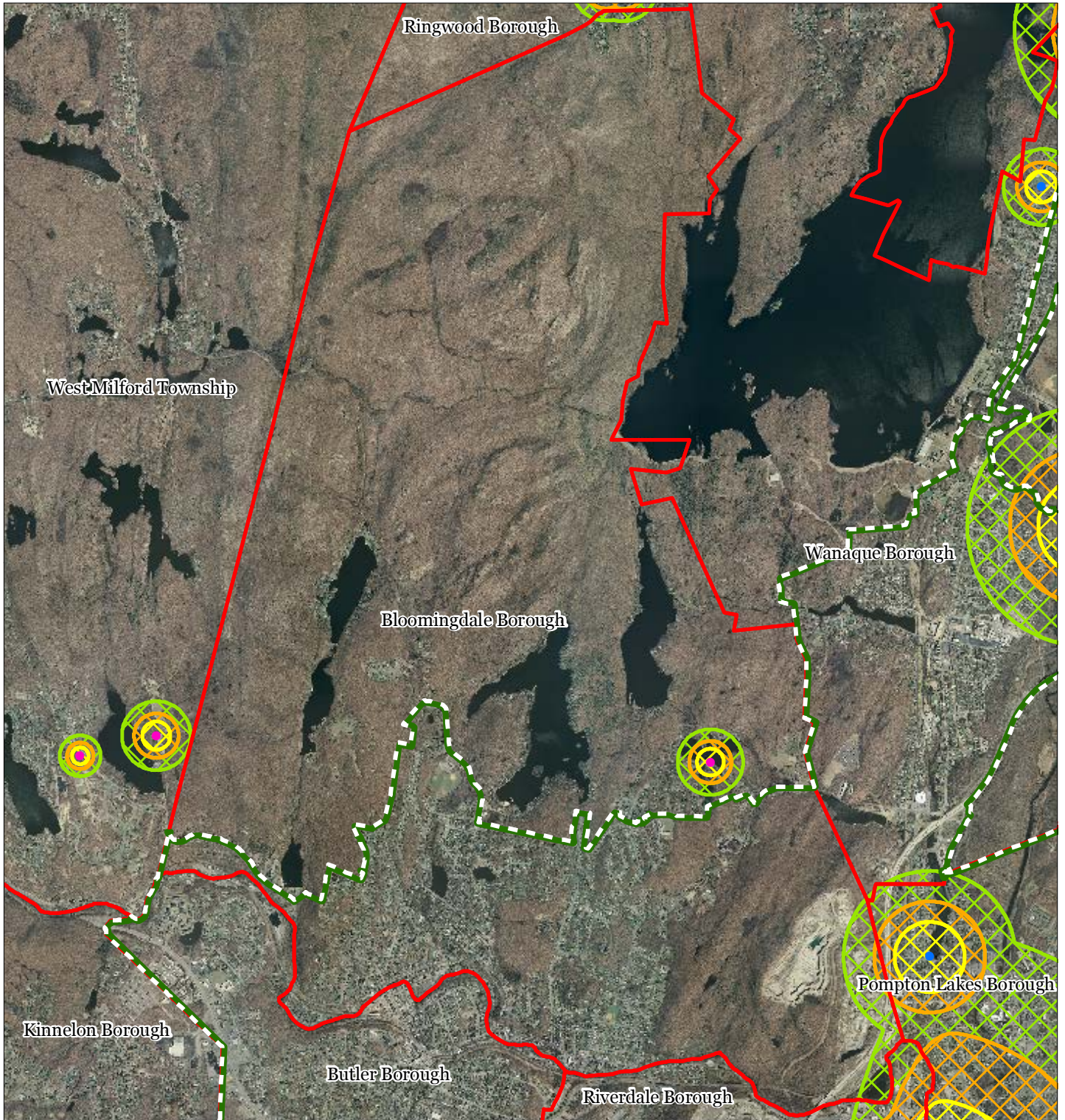


1 inch = 0.573 miles



Sept 2011

Figure 23: Wellhead Protection Areas



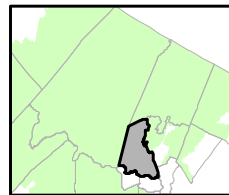
- Public Community Wells
- Public Non-Community Wells

Wellhead Protection Areas

- 2-Year Tier
- 5-Year Tier
- 12-Year Tier

- Preservation Area
- Municipal Boundaries

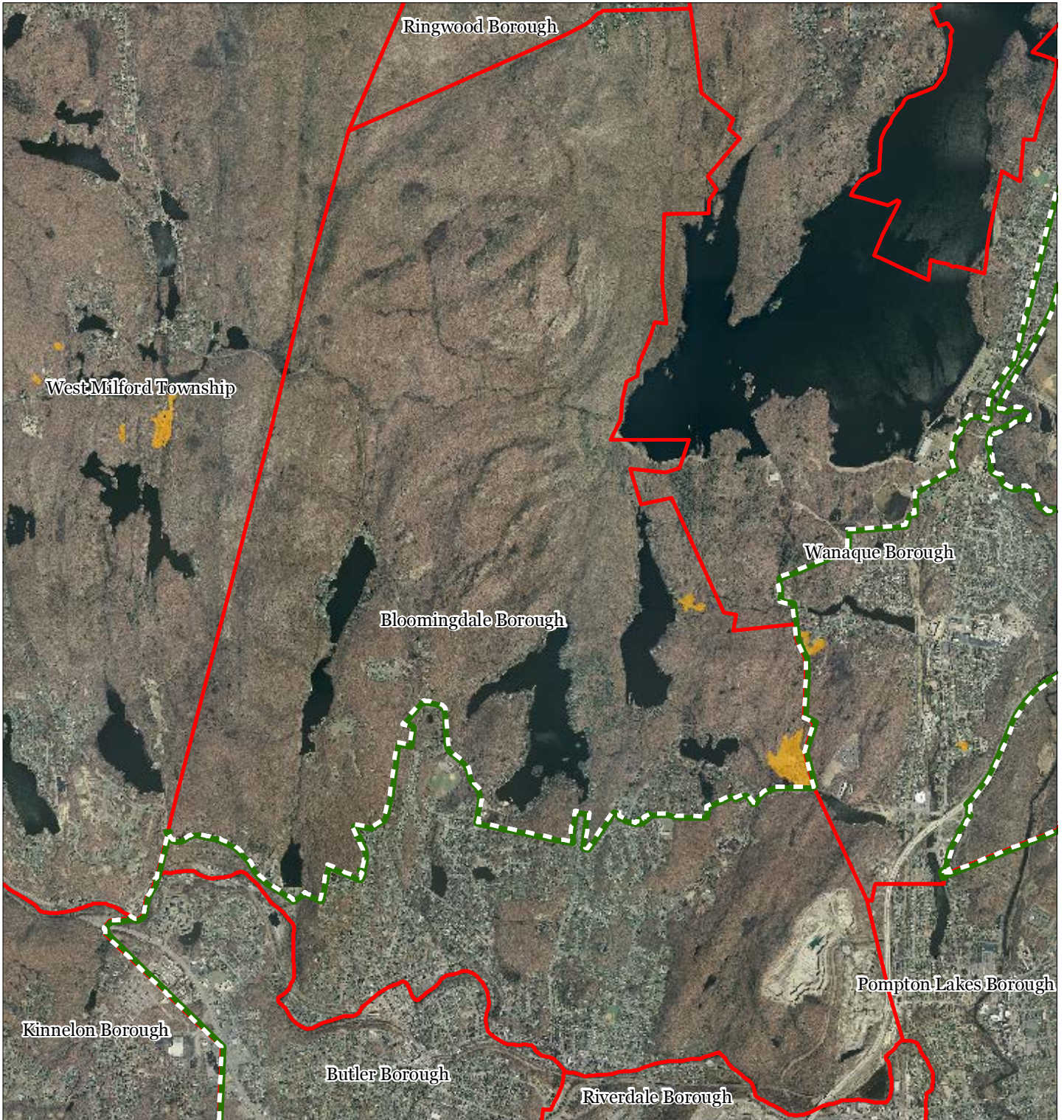
Bloomingdale Borough



1 inch = 0.573 miles



Figure 26: Preserved Farms, SADC Easements, All Agricultural Uses



Bloomingdale Borough

SADC Easements



SADC Final



SADC Preserved



Preserved Farmland



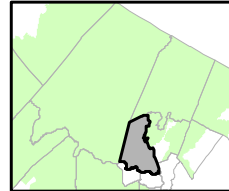
Agriculture Uses



Preservation Area



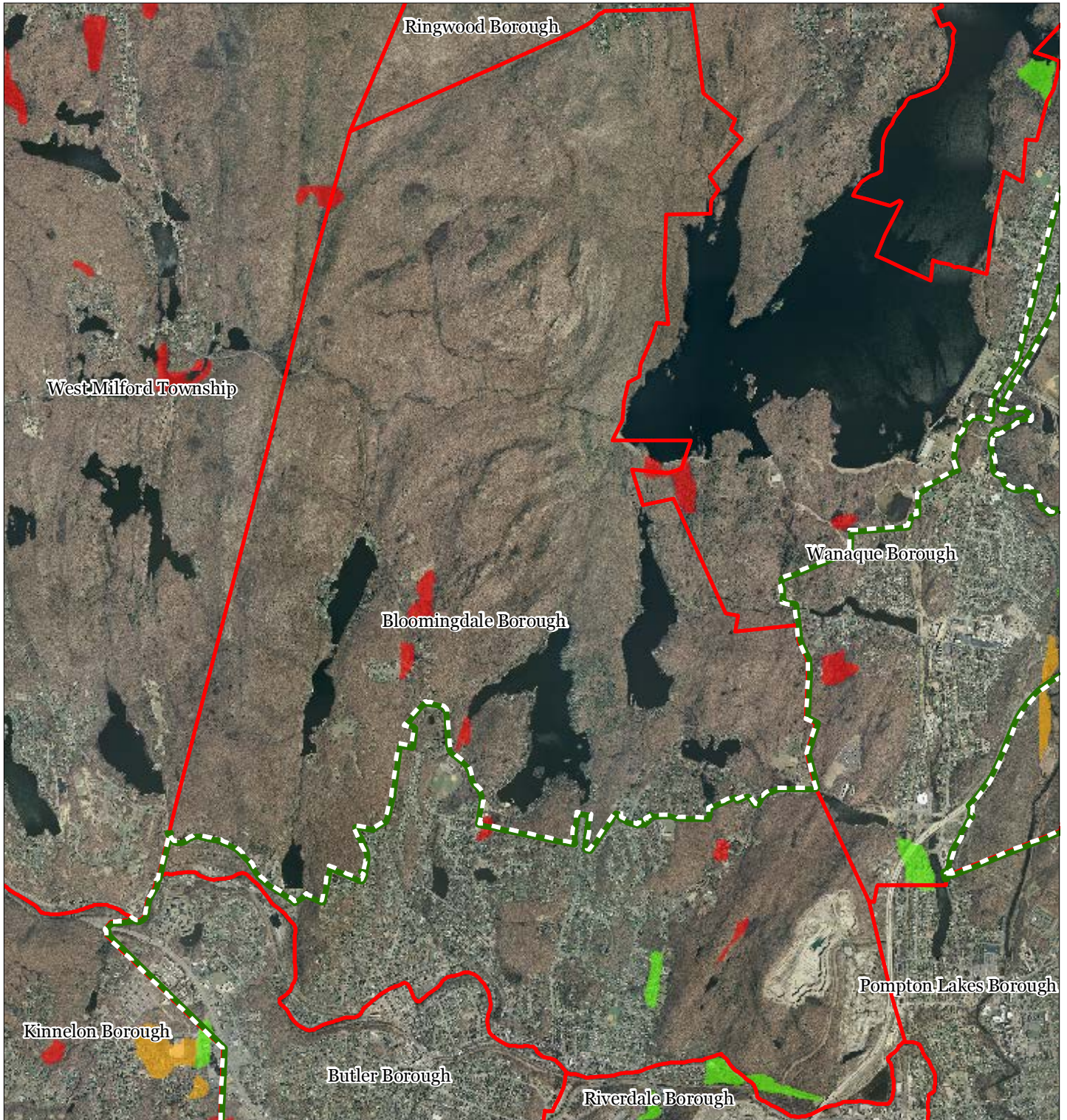
Municipal Boundaries



1 inch = 0.573 miles



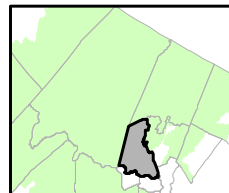
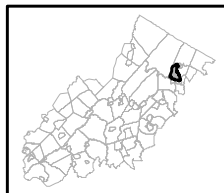
Figure 27: Important Farmland Soils



Bloomingdale Borough

Important Farmland Soils

- Prime Farmland
- Farmland of Local Importance
- Farmland of Statewide Importance
- Farmland of Unique Importance
- Preservation Area
- Municipal Boundaries

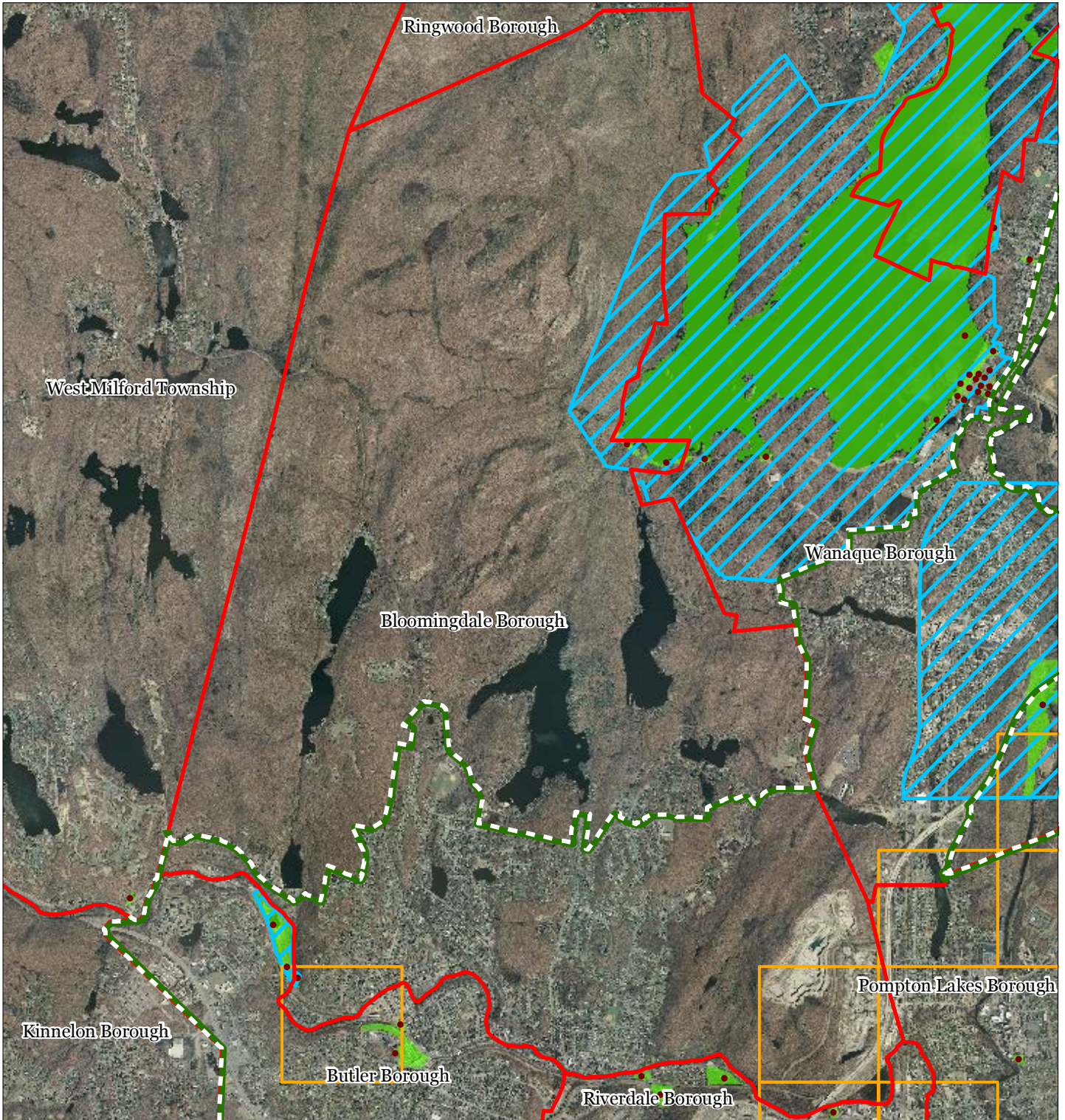


1 inch = 0.573 miles



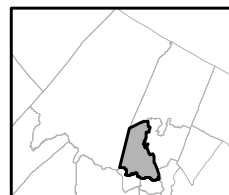
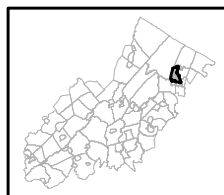
Sept 2011

Figure 28: Historic, Cultural, and Archaeological Resources Inventory



Bloomingdale Borough

-  Preservation Area
-  Municipal Boundaries
-  Archaeological Grids (1 sqmi)
-  NJ Historic Districts
-  Historic Property Points
-  Historic Property Polygons

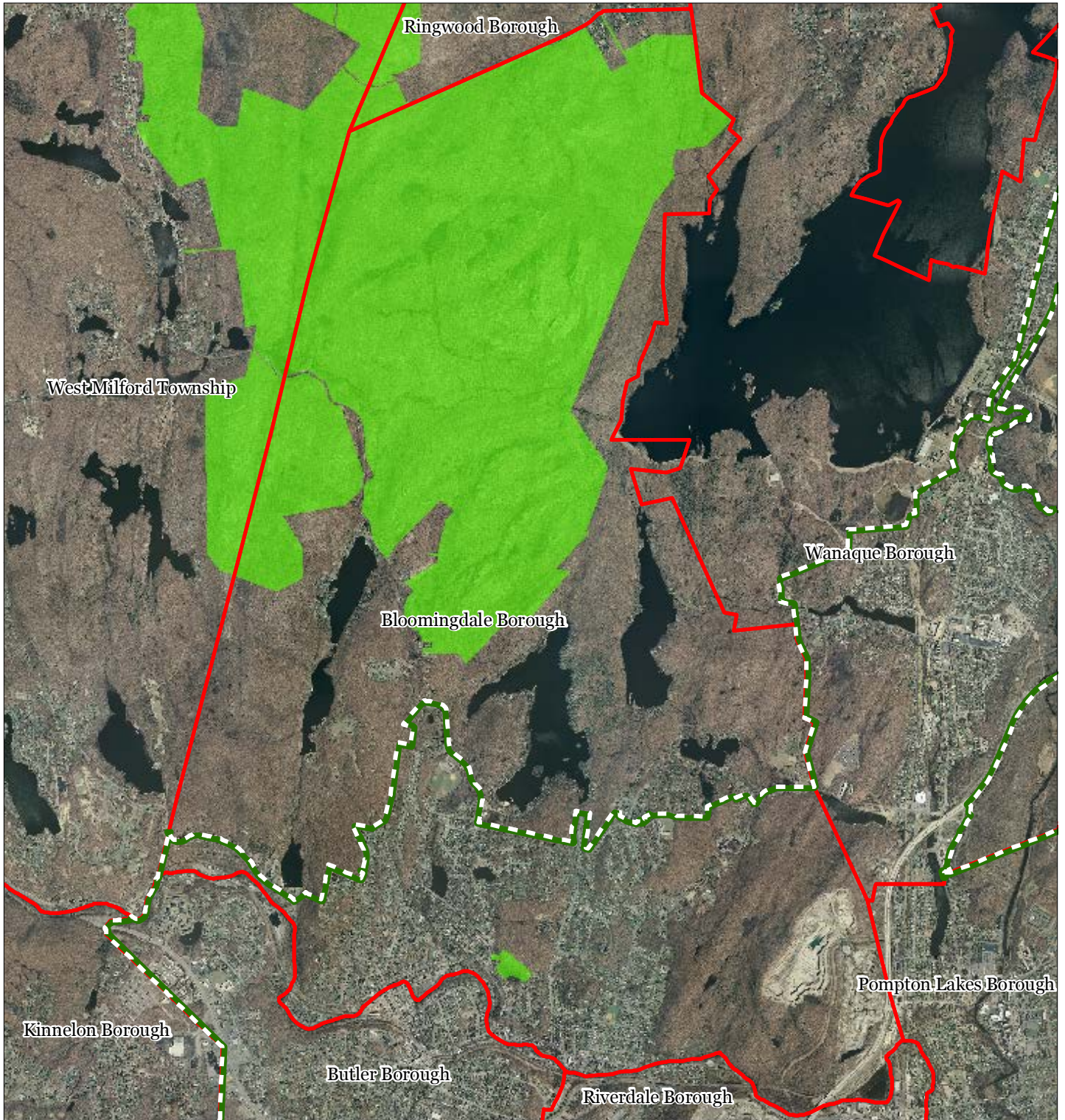


1 inch = 0.573 miles






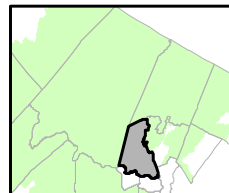
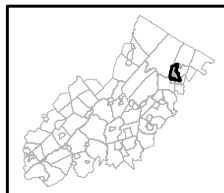
Sept 2011

Figure 29: Baseline Scenic Resources Inventory



Bloomingdale Borough

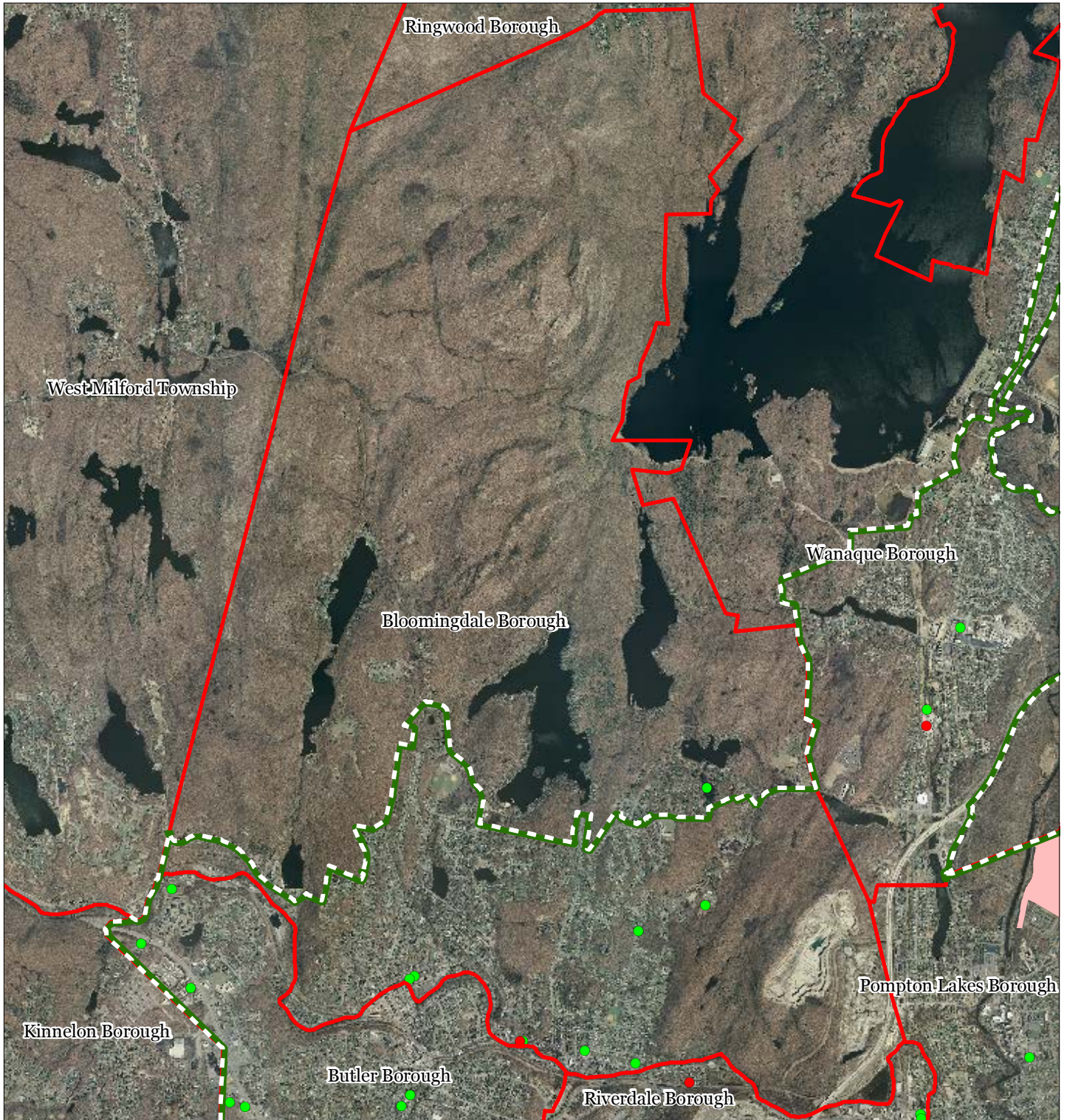
-  Scenic Resources
-  Municipal Boundaries
-  Preservation Area



1 inch = 0.573 miles



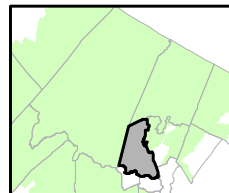
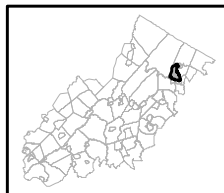
Figure 30: Highlands Contaminated Site Inventory



Highlands Contaminated Site Inventory

Bloomingdale Borough

- Tier 1 Sites
- Tier 1 Sites (Polygons)
- Tier 2 Sites
- ▬ Preservation Area
- ▬ Municipal Boundaries

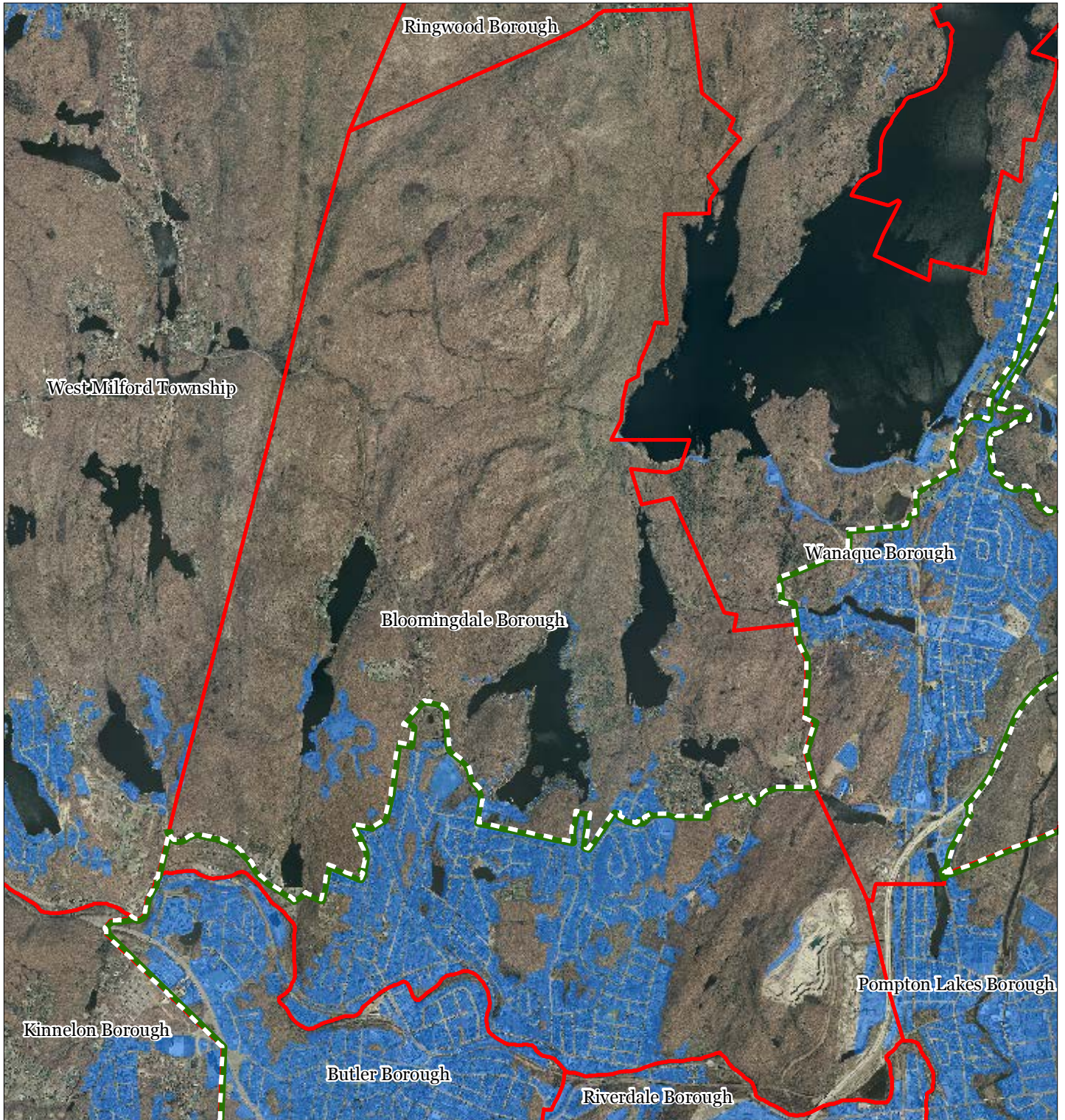





1 inch = 0.573 miles



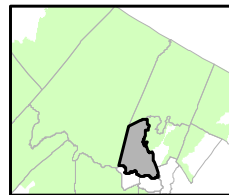
Sept 2011

Figure 31: Public Community Water Systems



-  Public Community Water Systems
-  Preservation Area
-  Municipal Boundaries

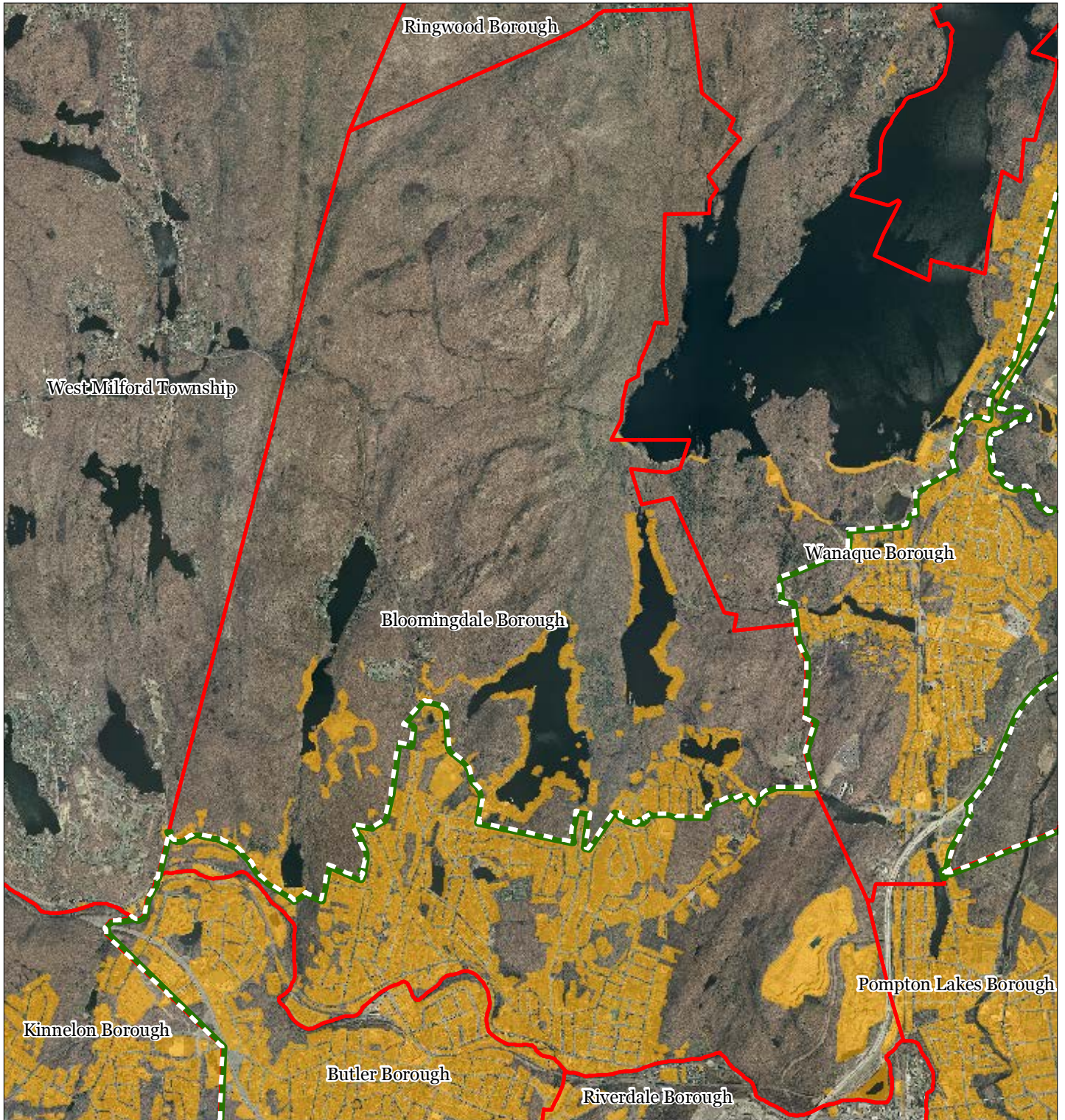
Bloomingdale Borough






1 inch = 0.573 miles



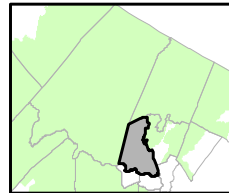
Figure 32: Highlands Domestic Sewerage Facilities



Highlands Domestic Sewerage Facilities

-  Existing Area Served
-  Preservation Area
-  Municipal Boundaries

Bloomingdale Borough

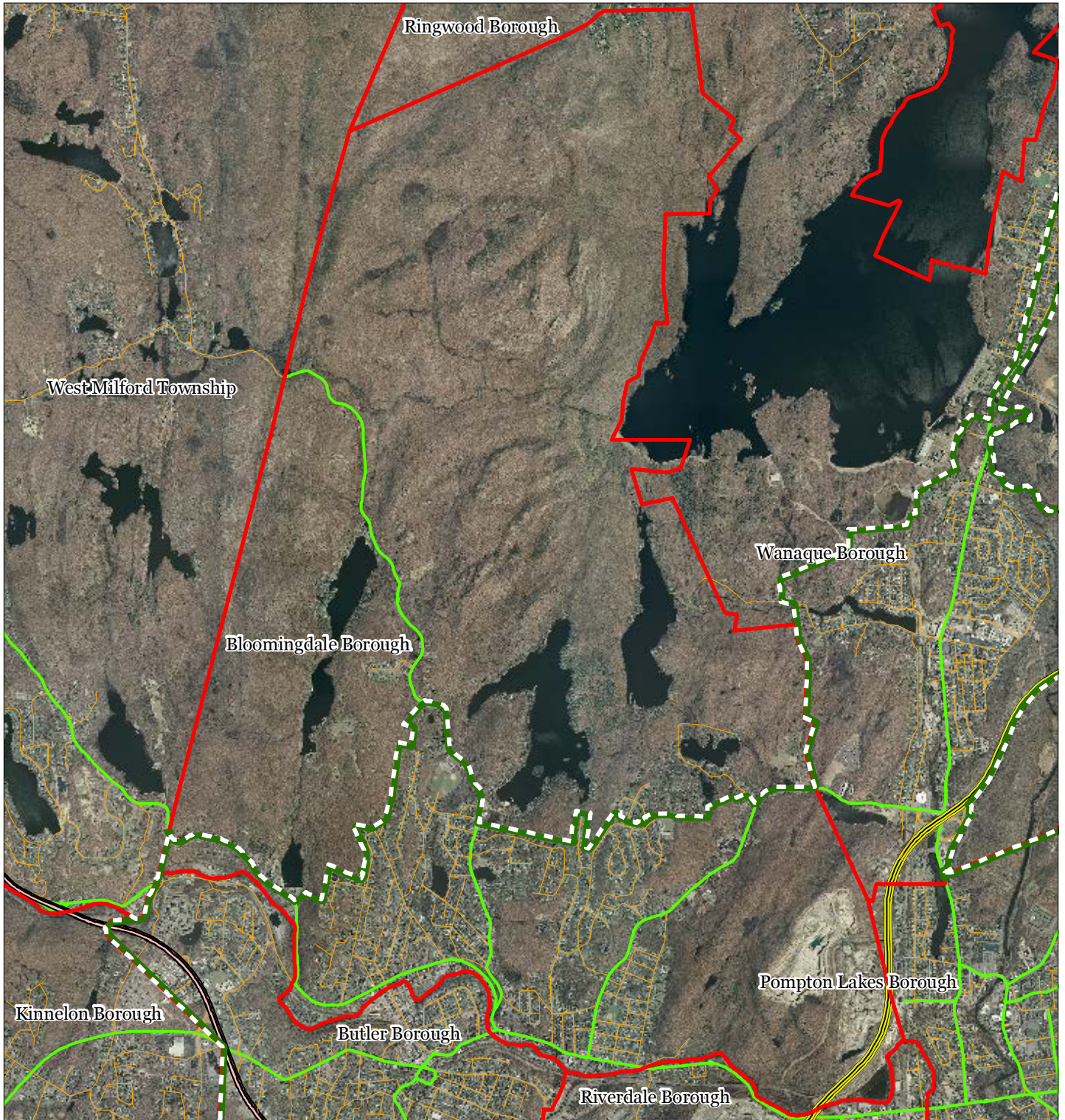


1 inch = 0.573 miles



Sept 2011

Figure 33: Highlands Roadway Network



Roadway Network

Interstate Highways

U.S. Routes

State Routes

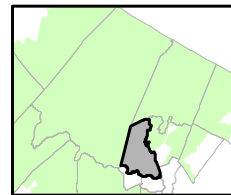
County Routes

Local Routes

Preservation Area

Municipal Boundaries

Bloomingdale Borough

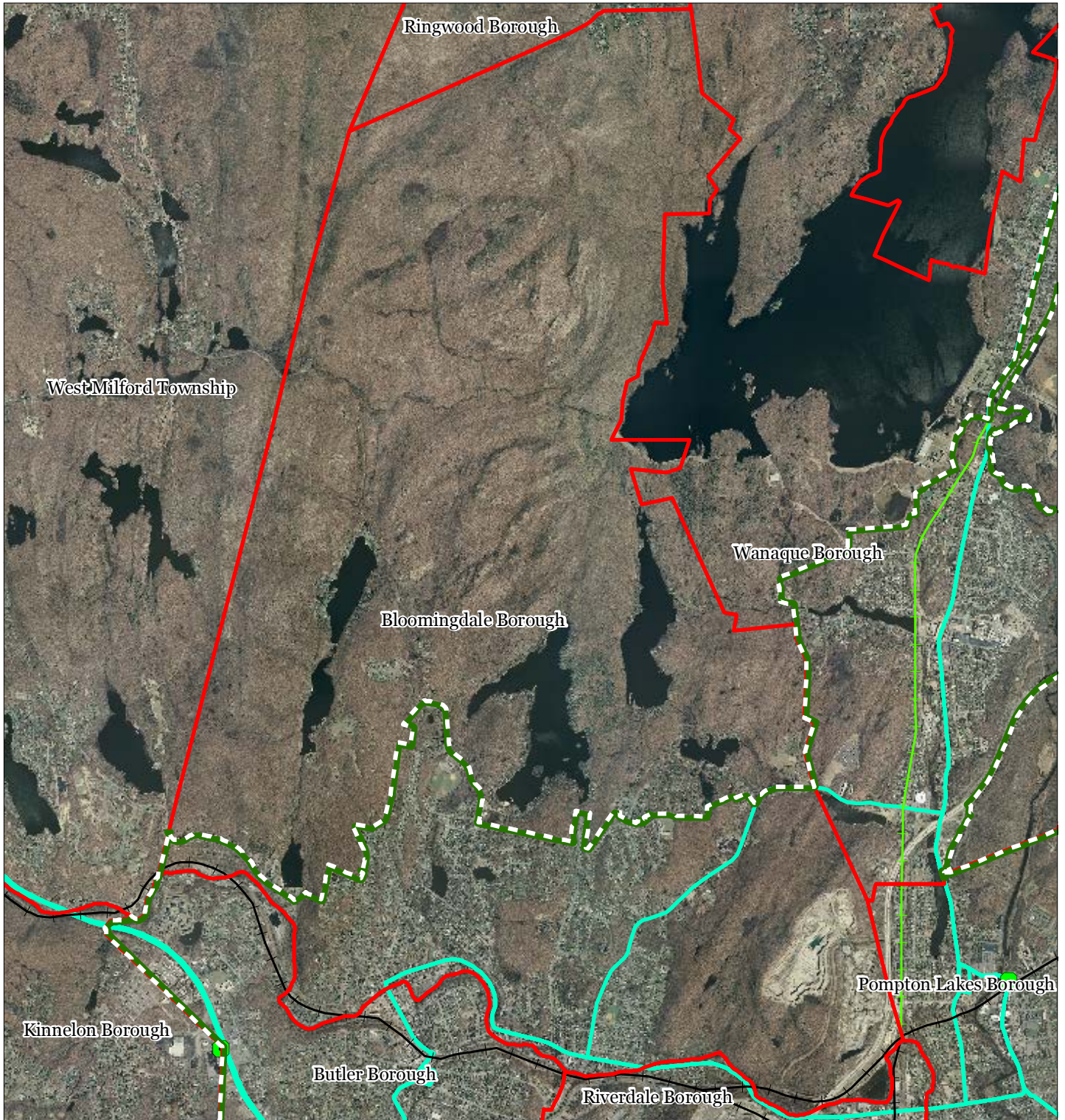


1 inch = 0.573 miles



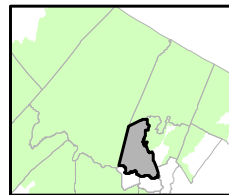
Sept 2011

Figure 34: Highlands Transit Network



- | | |
|--------------------------------|----------------------|
| Rail Network | Rail Stations |
| Boonton Line | Park and Ride Sites |
| Main Line & Bergen County Line | Private Bus Lines |
| Morris and Essex Line | NJ Transit Bus Lines |
| Raritan Valley Line | Airports |
| Freight Rail Lines | |
| Freight Rail Lines | |
| Abandoned Freight Rail | |

Bloomingdale Borough



1 inch = 0.573 miles



Sept 2011