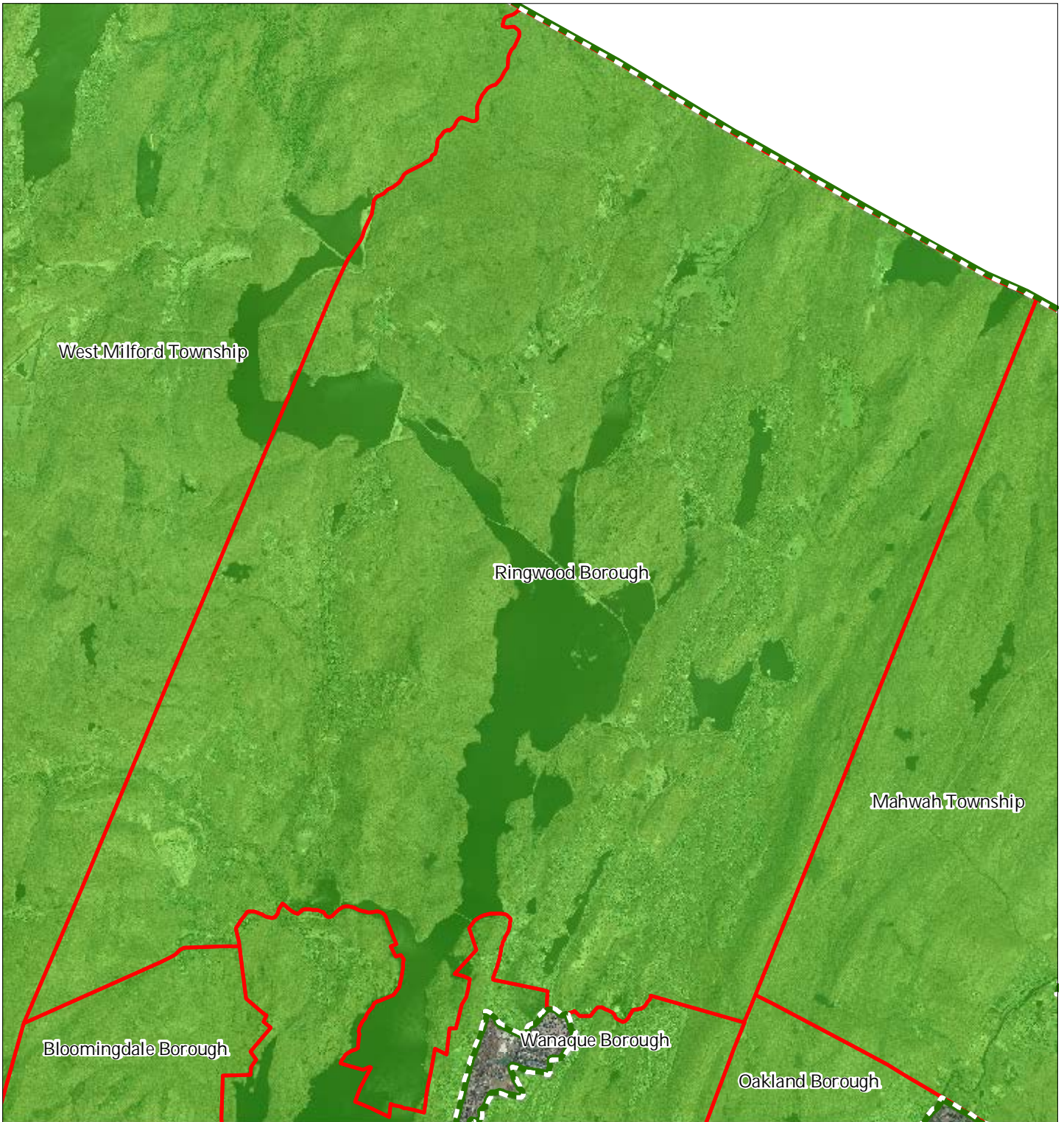


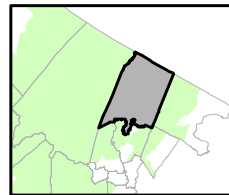
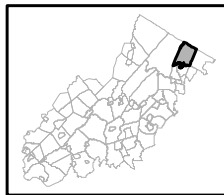


Figure 1: Preservation Area



-  Preservation Area
-  Municipal Boundaries

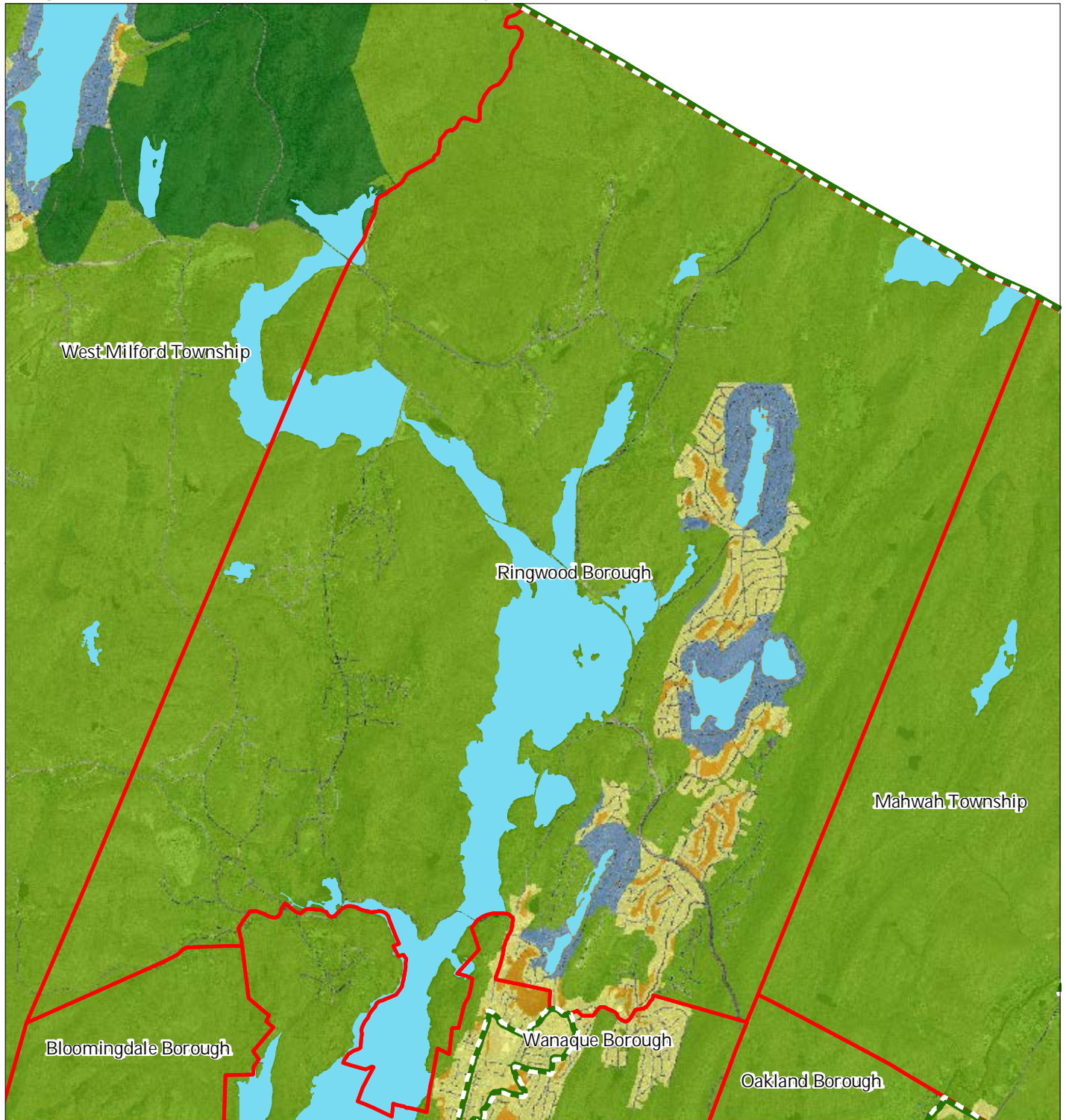
Ringwood Borough



1 inch = 0.91 miles



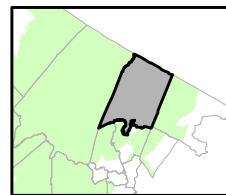
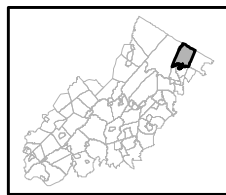
Figure 2: Land Use Capability Map Zones



Regional Master Plan Overlay Zone Designation

Zone	
	Protection
	Conservation
	Existing Community
	Lakes Greater Than 10 acres
	Preservation Area
	Municipal Boundaries
Sub-Zone	
	Existing Community Environmentally Constrained
	Conservation Environmentally Constrained
	Lake Community
	Wildlife Management

Ringwood Borough

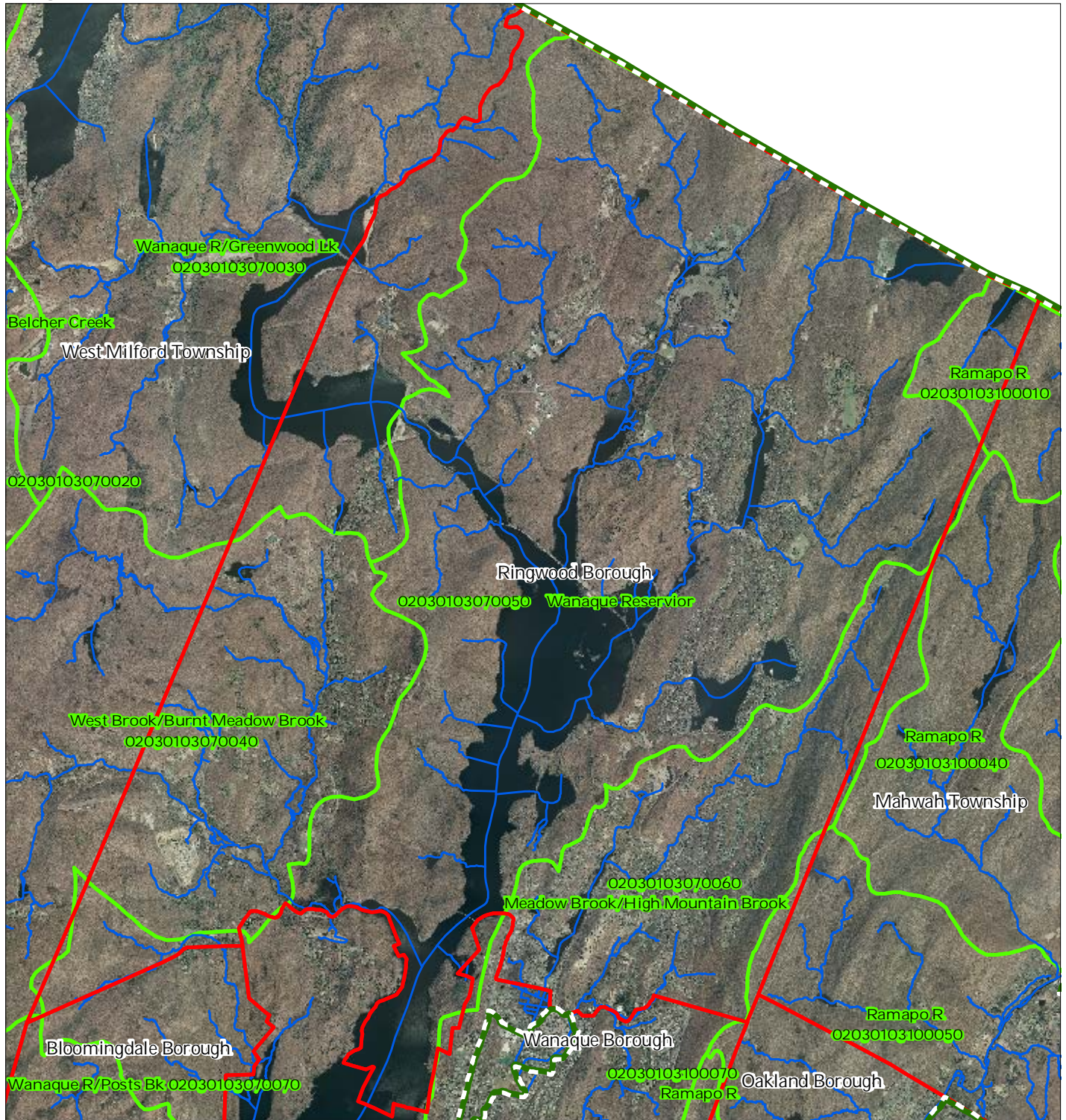


1 inch = 0.91 miles



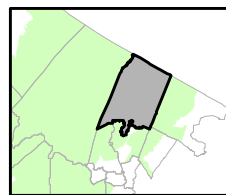
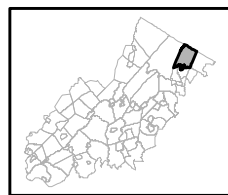
08/2011

Figure 3: HUC 14 Boundaries



- HUC 14 Subwatersheds
- Stream Centerlines
- Preservation Area
- Municipal Boundaries

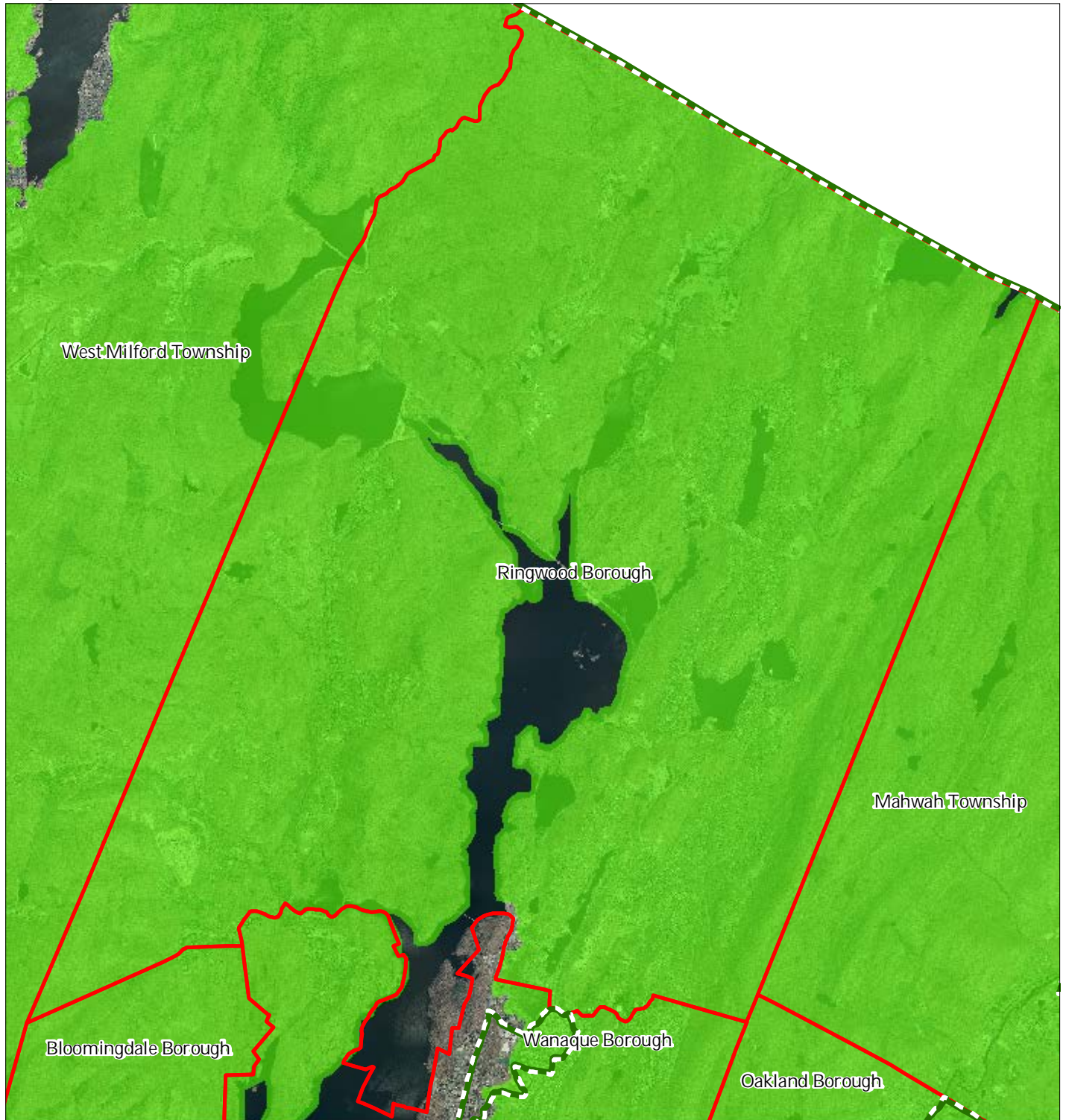
Ringwood Borough



1 inch = 0.91 miles

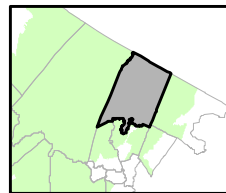
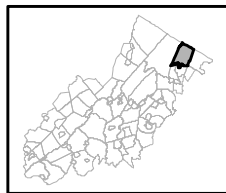


Figure 4: Forest Resource Area



- Forest Resource Area
- Preservation Area
- Municipal Boundaries

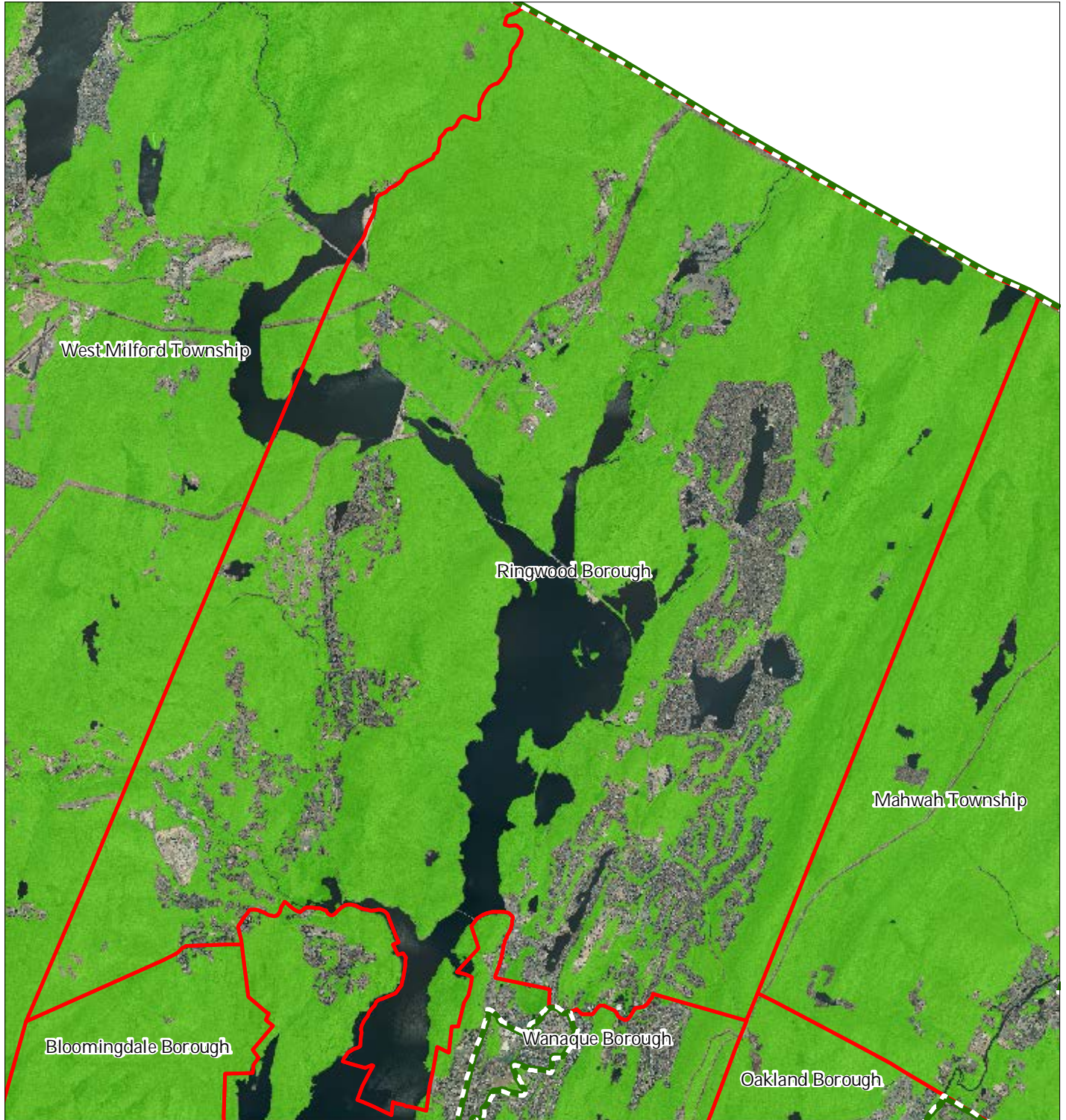
Ringwood Borough






1 inch = 0.91 miles

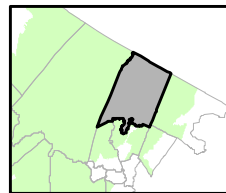
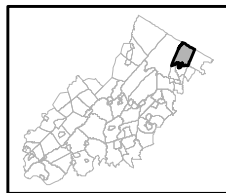


Figure 5: Total Forest Area



-  Forested Areas
-  Preservation Area
-  Municipal Boundaries

Ringwood Borough

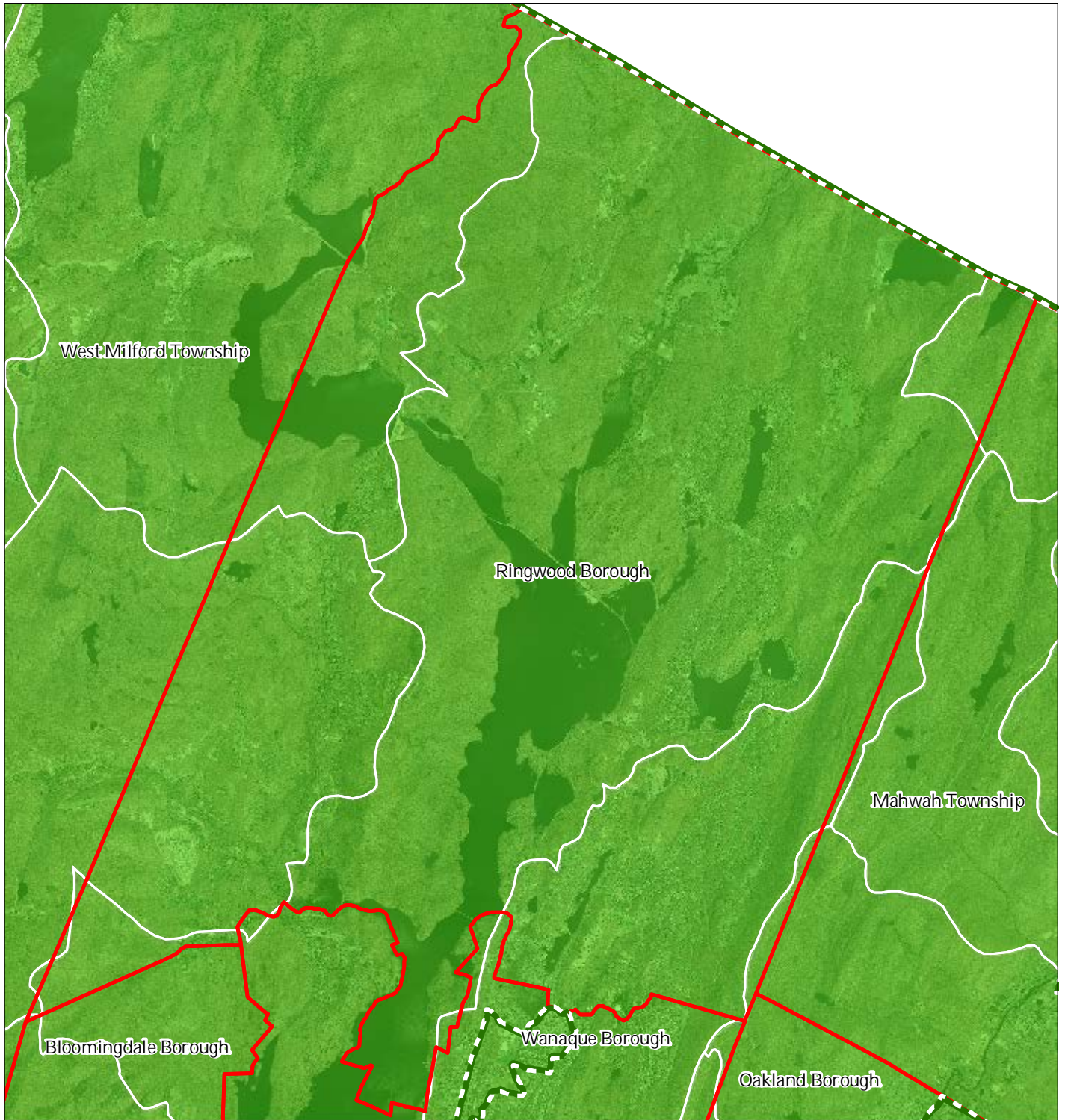


1 inch = 0.91 miles

 Highlands Council
New Jersey



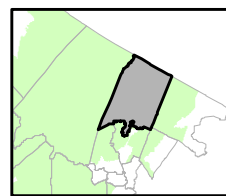
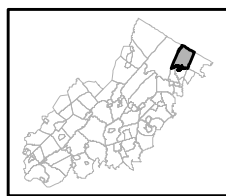
Figure 6: Forest Subwatersheds



Forest Integrity by HUC14 Subwatershed

- Low*
- Moderate*
- High*
- Preservation Area
- Municipal Boundaries

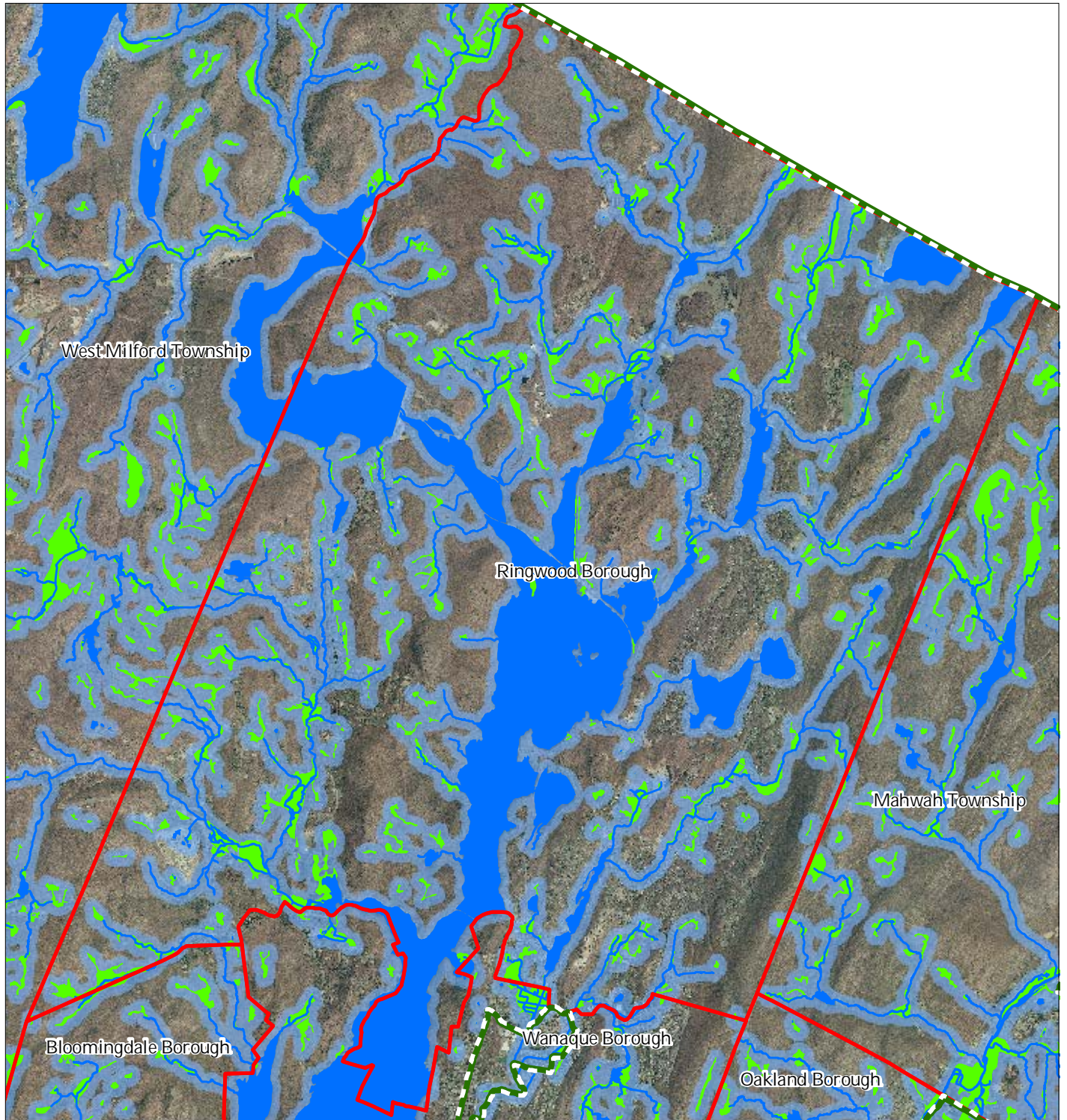
Ringwood Borough



1 inch = 0.91 miles

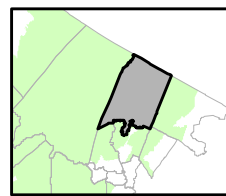
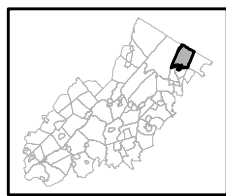


Figure 7: Highlands Open Waters



- Highlands Open Water Buffers (300ft)
- Streams
- Wetlands
- Lakes & Ponds
- Preservation Area
- Municipal Boundaries

Ringwood Borough

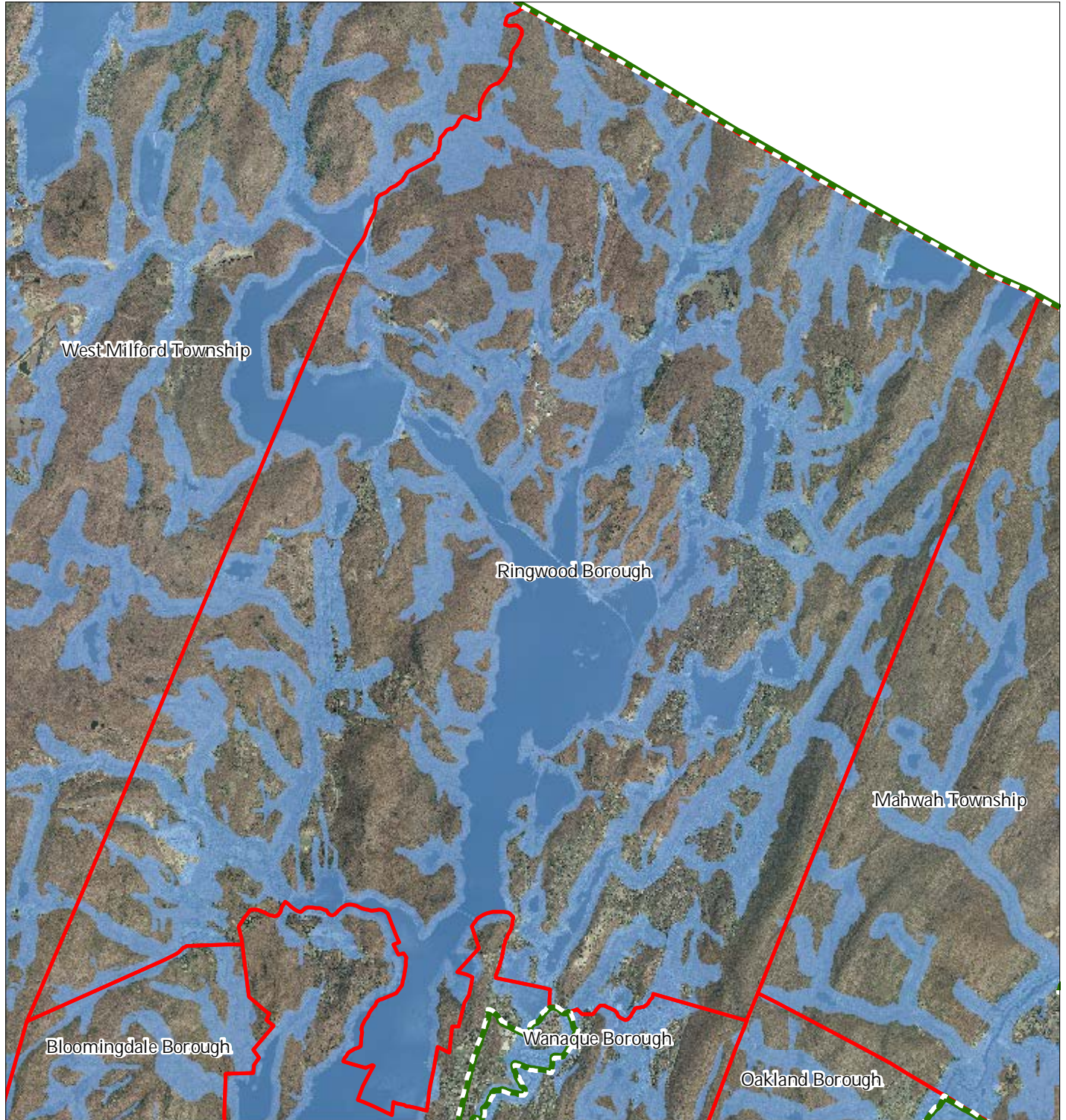


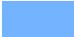


1 inch = 0.91 miles

Highlands
Council
New Jersey

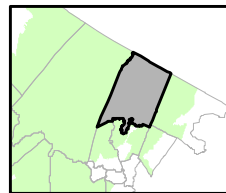
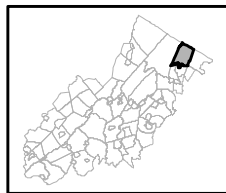


Figure 8: Highlands Riparian Areas



-  Riparian Area
-  Preservation Area
-  Municipal Boundaries

Ringwood Borough

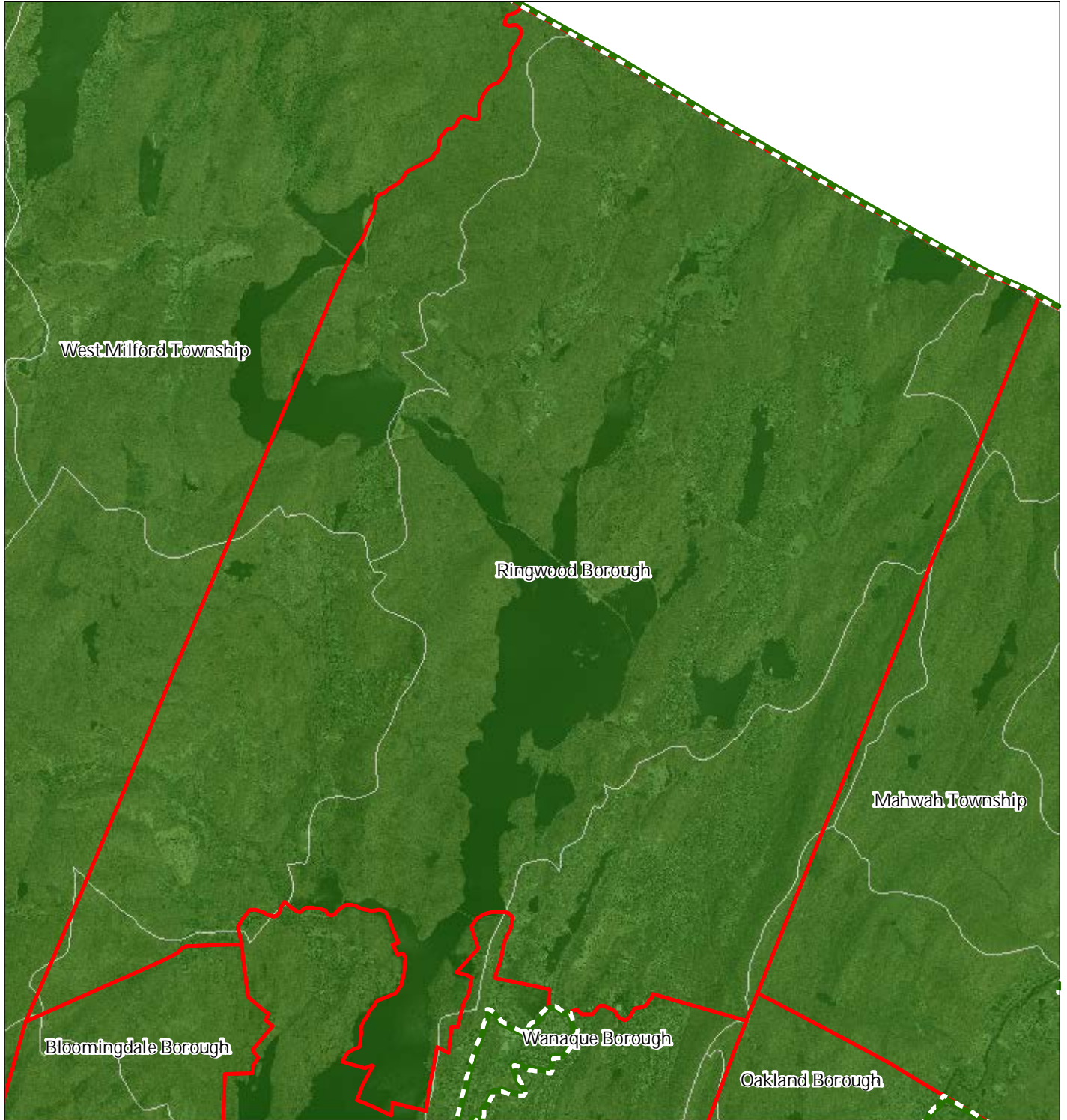


1 inch = 0.91 miles


Highlands Council
New Jersey



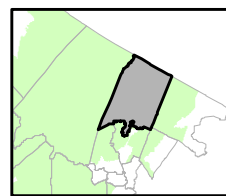
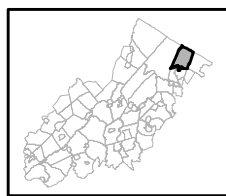
Figure 9: Watershed Values



Watershed Values by HUC14 Subwatershed

- Low*
- Moderate*
- High*
- Preservation Area
- Municipal Boundaries

Ringwood Borough

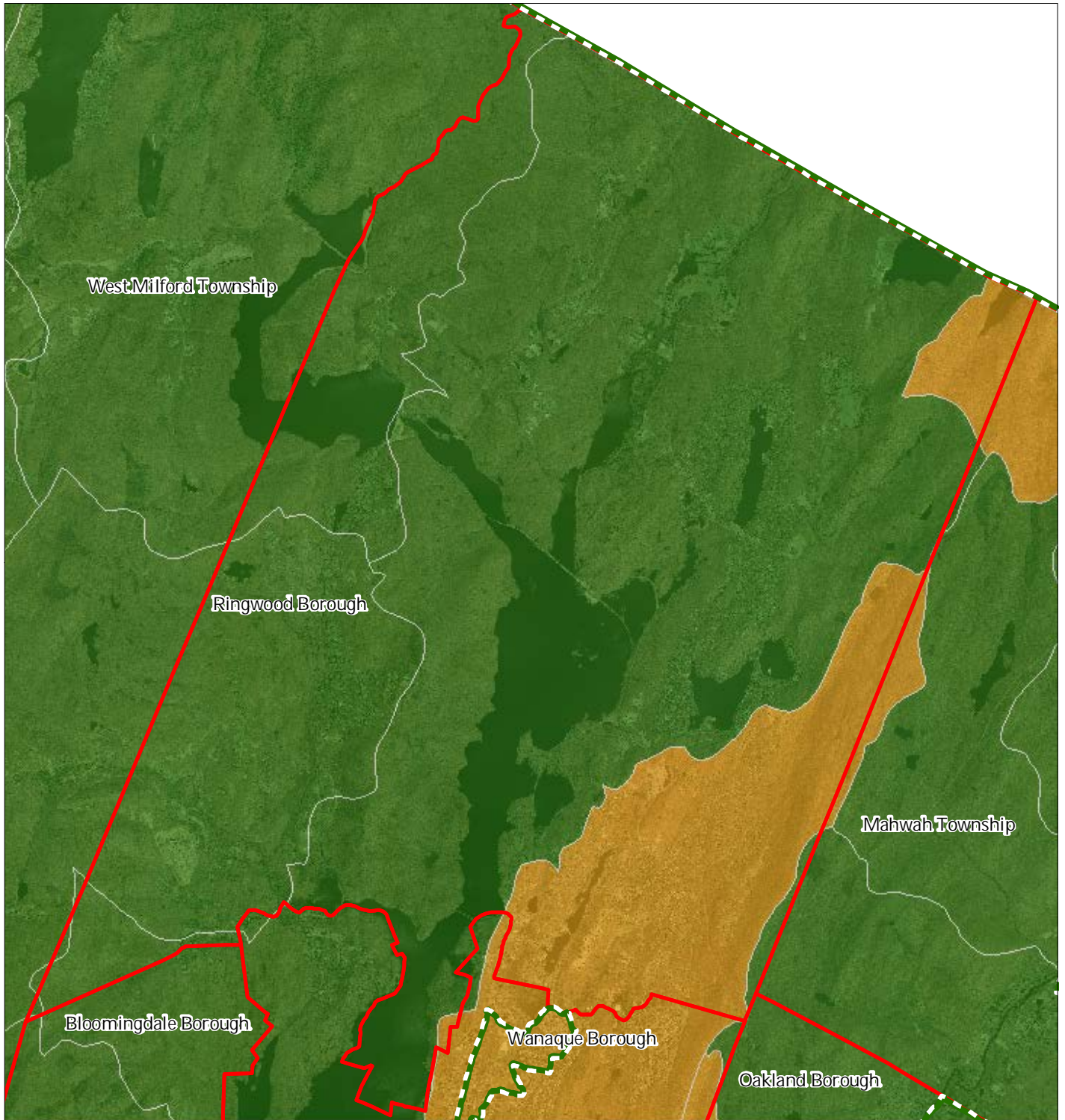


1 inch = 0.91 miles



08/2011

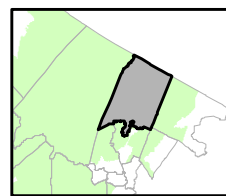
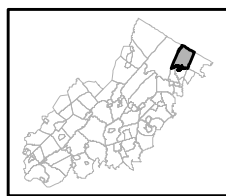
Figure 10: Riparian Integrity



Riparian Integrity by HUC14 Subwatershed

- Low*
- Moderate*
- High*
- Preservation Area
- Municipal Boundaries

Ringwood Borough

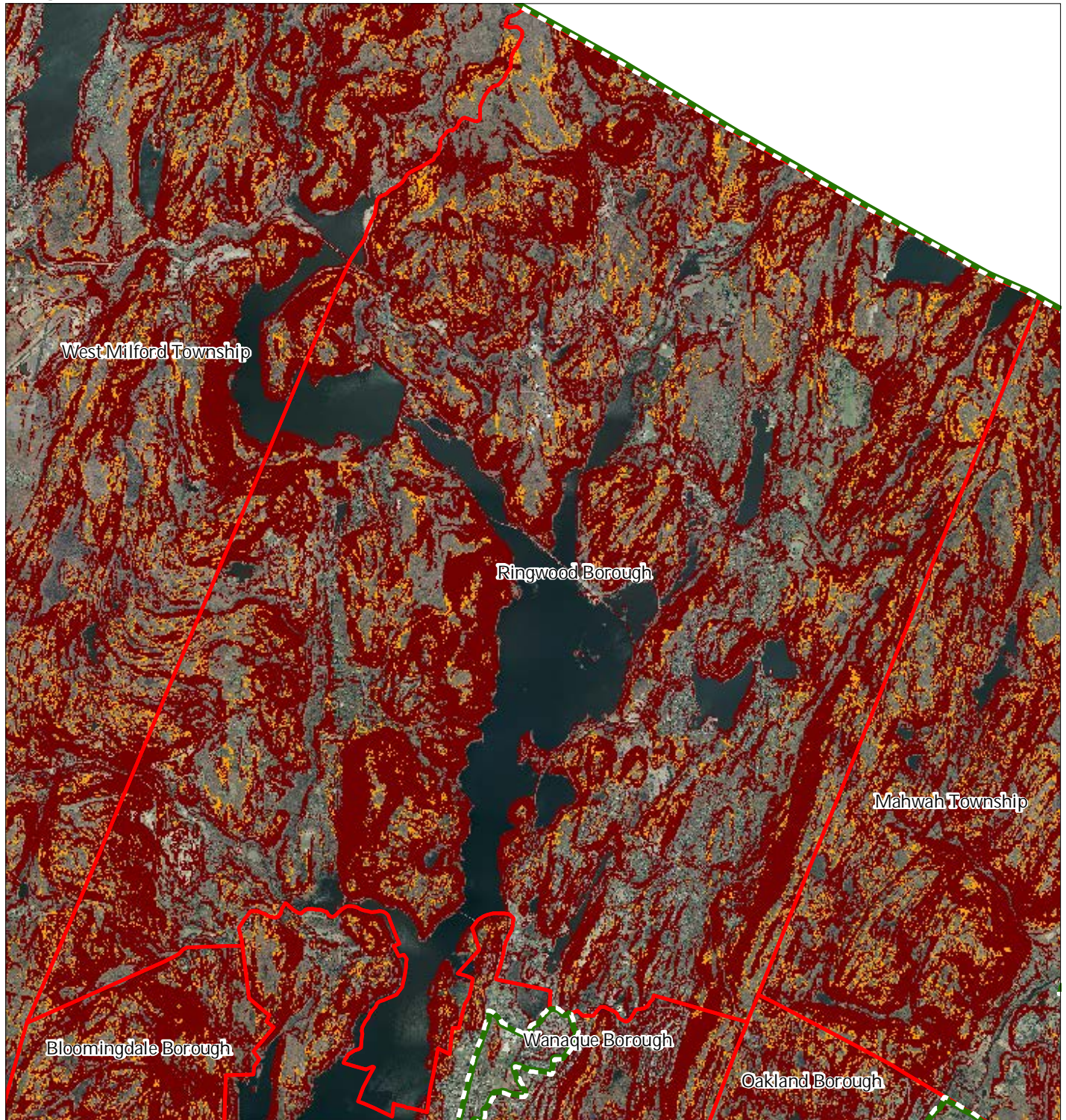


1 inch = 0.91 miles



08/2011

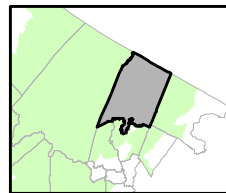
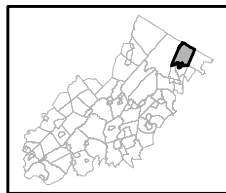
Figure 11: Steep Slopes Protection Areas



Steep Slopes

- Moderate*
- Severe*
- Preservation Area
- Municipal Boundaries

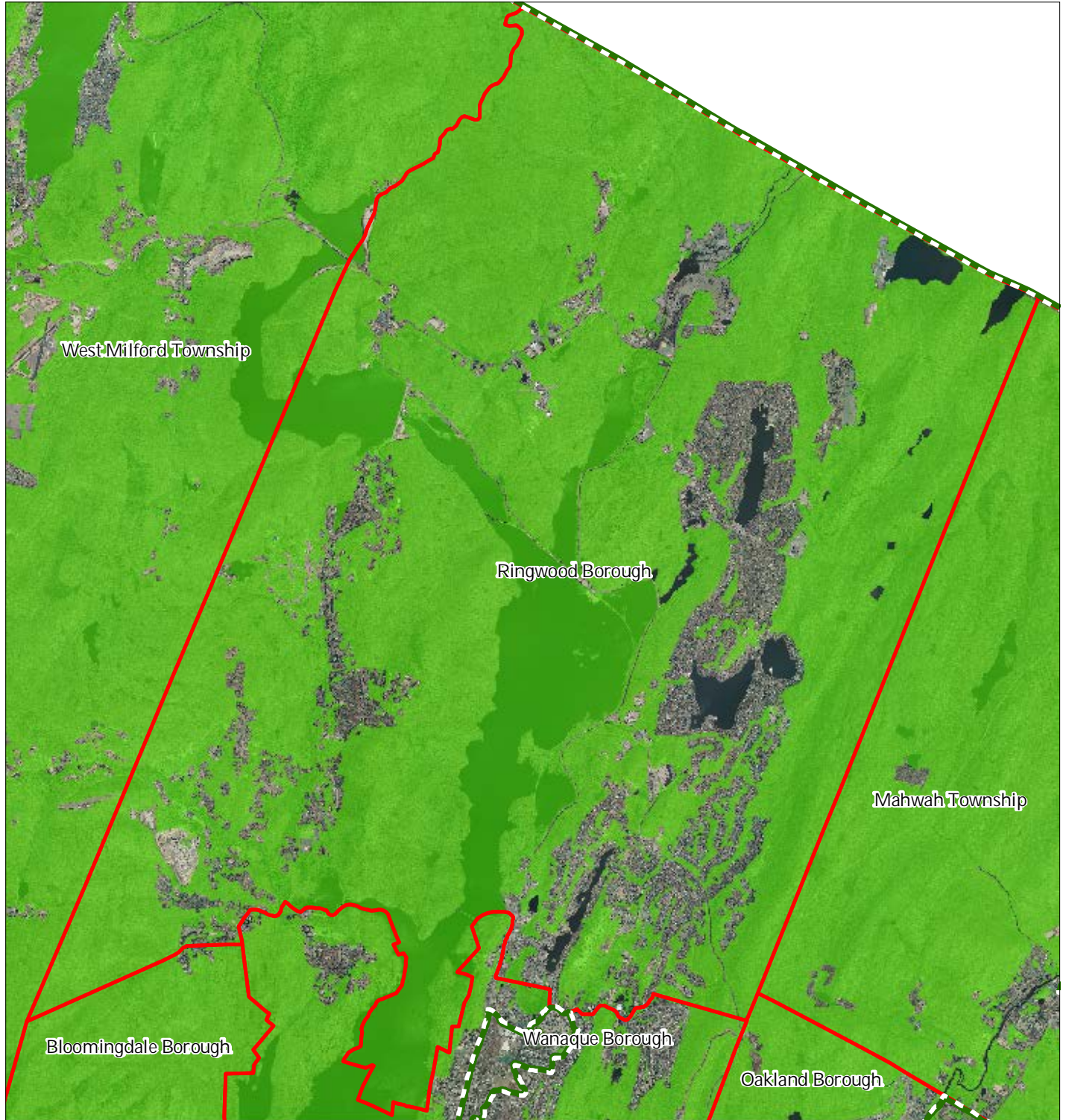
Ringwood Borough






1 inch = 0.91 miles

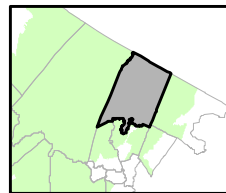
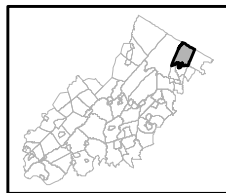


Figure 12: Critical Wildlife Habitat



-  Critical Wildlife Habitat
-  Preservation Area
-  Municipal Boundaries

Ringwood Borough

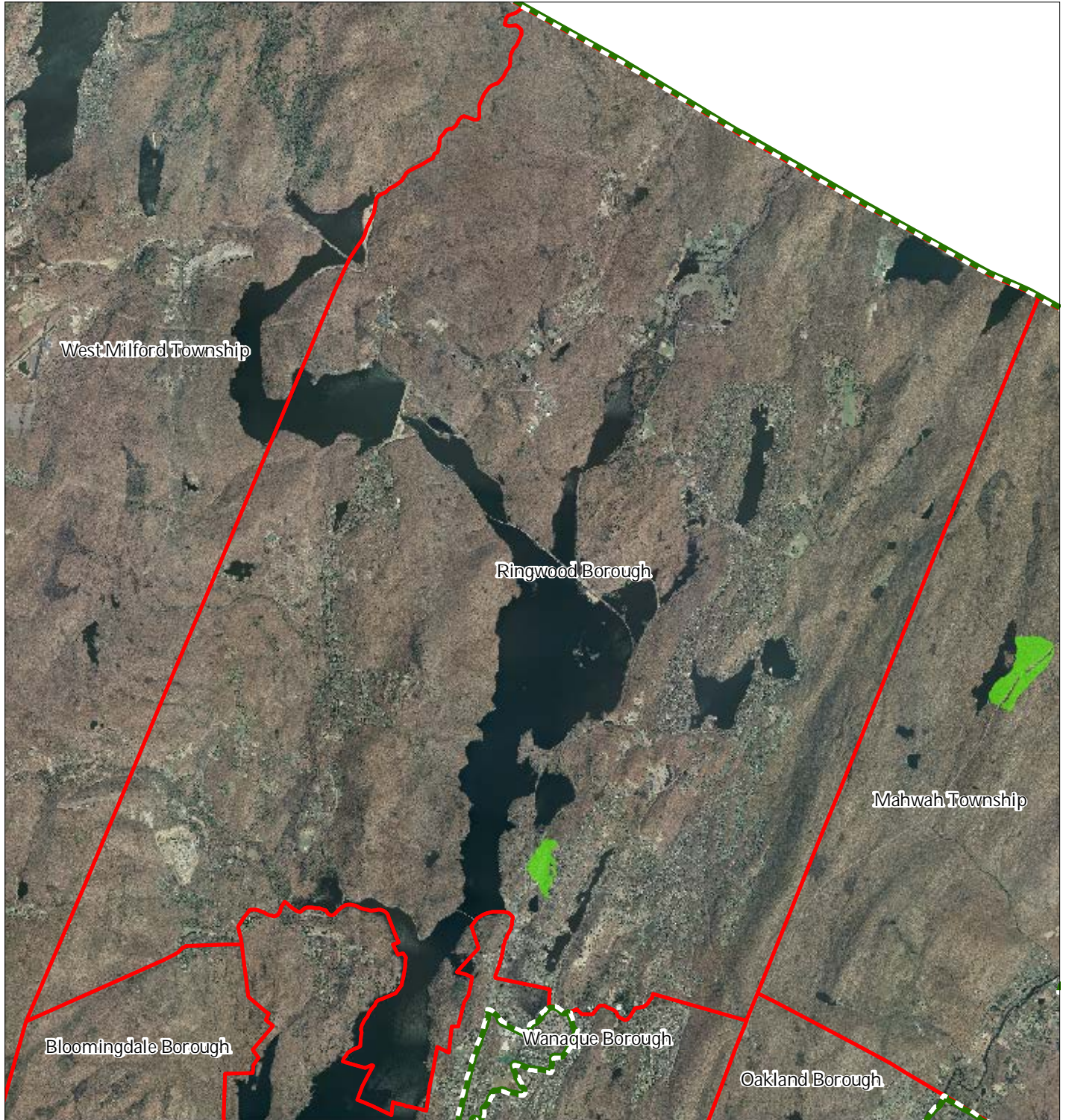





1 inch = 0.91 miles


Highlands Council
New Jersey

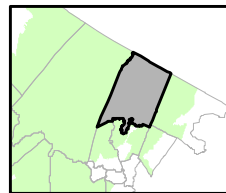
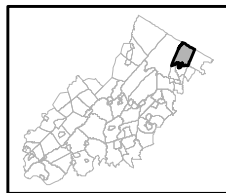


Figure 13: Significant Natural Areas



-  Significant Natural Areas
-  Preservation Area
-  Municipal Boundaries

Ringwood Borough

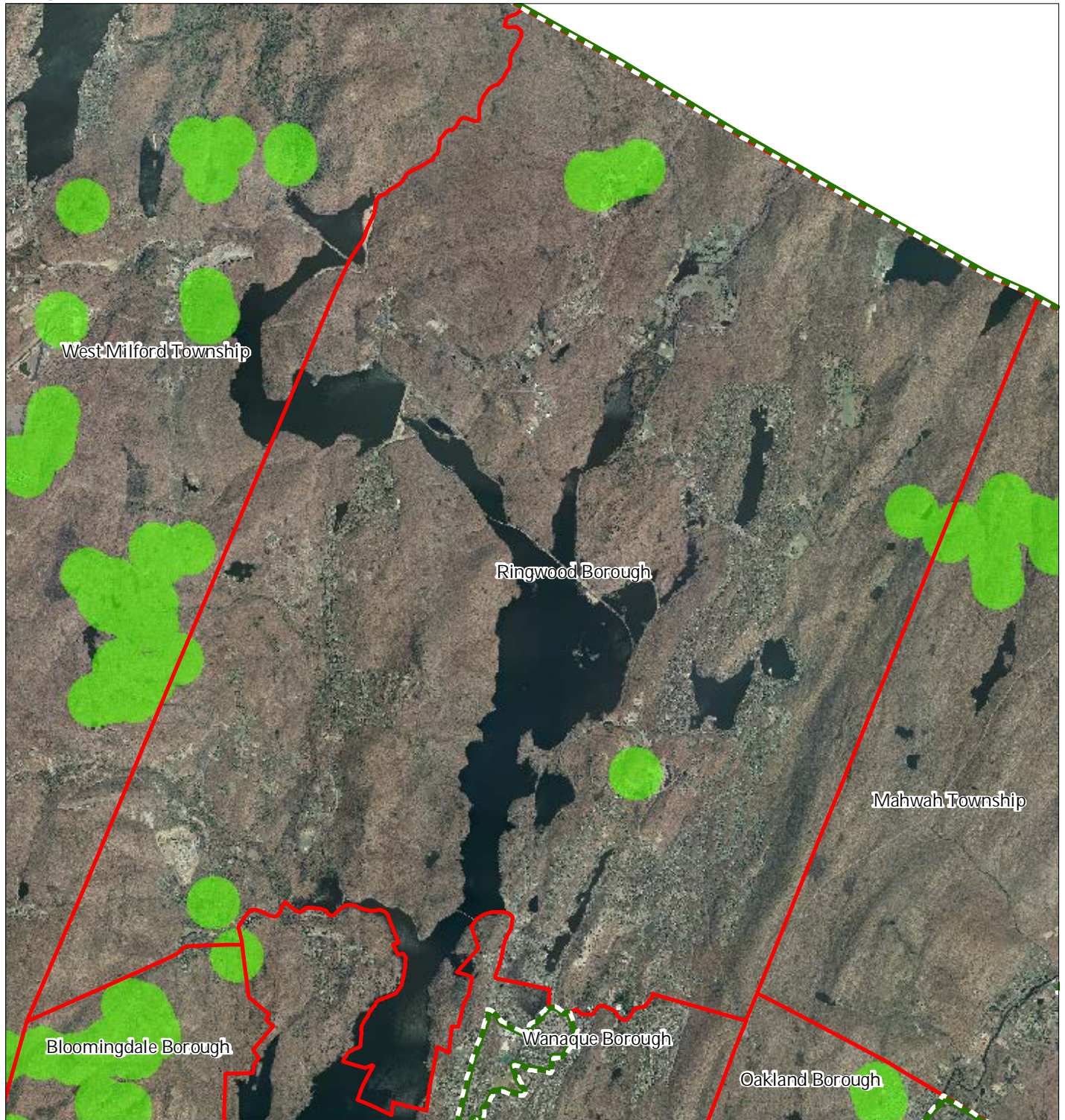





1 inch = 0.91 miles


Highlands Council
New Jersey

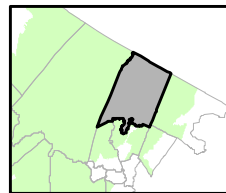
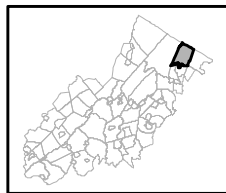


Figure 14: Vernal Pools



-  Vernal Pools + 1000ft Buffer
-  Preservation Area
-  Municipal Boundaries

Ringwood Borough

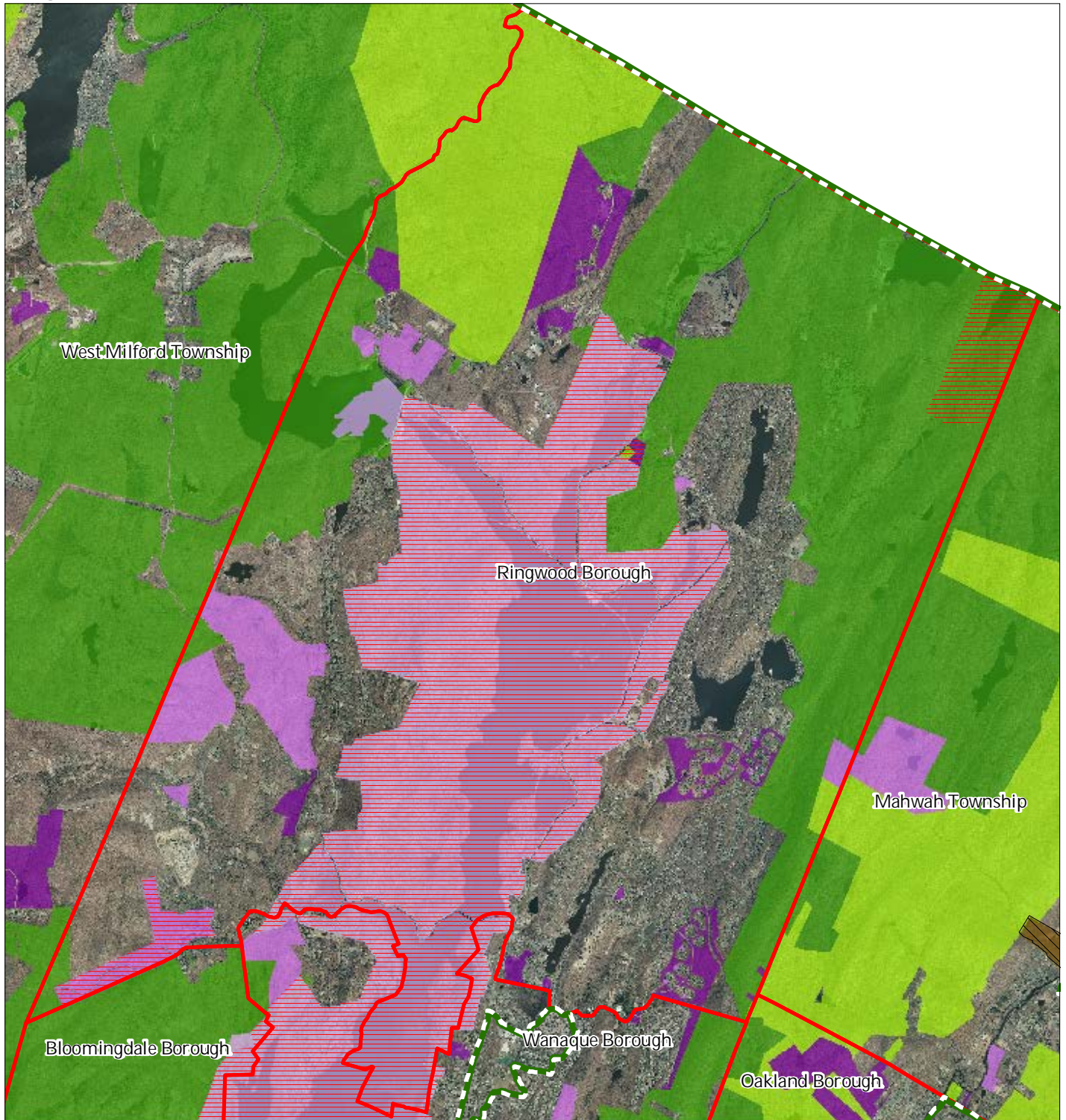


1 inch = 0.91 miles

 Highlands Council
New Jersey

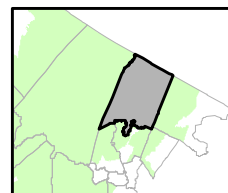
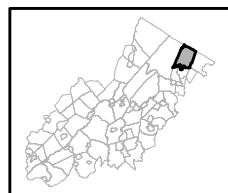


Figure 15: Preserved Lands



- | | |
|---|-------------------------------|
| Preserved Lands | Conservation Easements |
| Federal Open Space | Green Acres |
| State Open Space | SADC Easements |
| County Open Space | SADC Final |
| Municipal Open Space | SADC Preserved |
| Non-Profit/Private Open Space | Municipal Boundaries |
| Water Supply Watershed Lands | Preservation Area |
| Preserved Farmland | |
| Highlands Transfer of Development Lands | |

Ringwood Borough



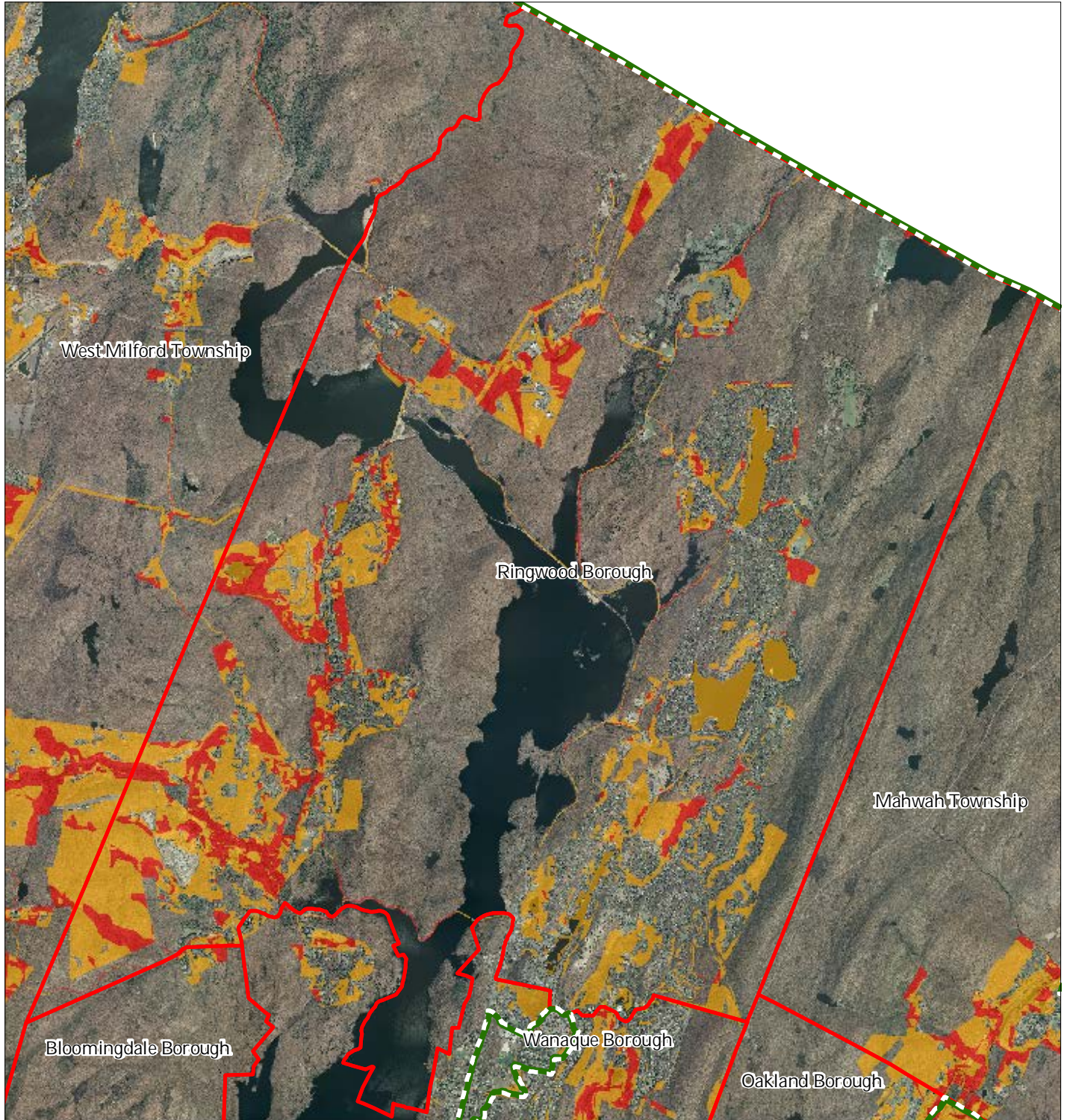
1 inch = 0.91 miles

Highlands Council
New Jersey



08/2011

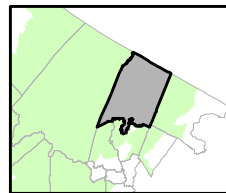
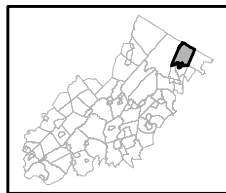
Figure 16: Highlands Conservation Priority Areas



Conservation Priority Area

- Moderate*
- High*
- Preservation Area
- Municipal Boundaries

Ringwood Borough



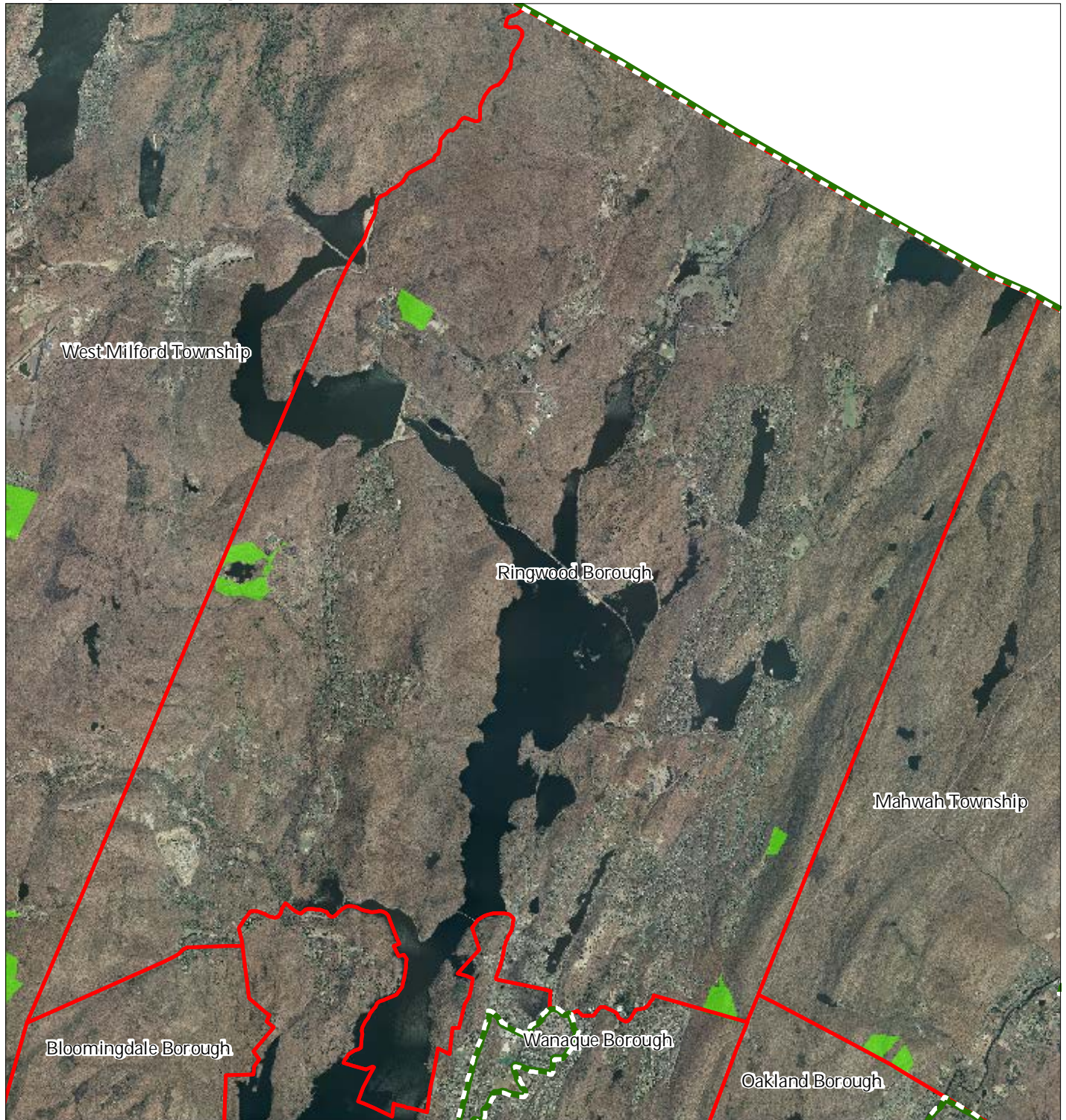
1 inch = 0.91 miles




Highlands Council
New Jersey



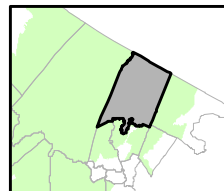
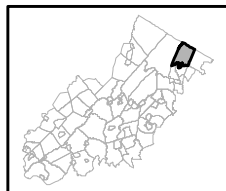
08/2011

Figure 17: Highlands Special Environmental Zone



-  Special Environmental Zones
-  Preservation Area
-  Municipal Boundaries

Ringwood Borough

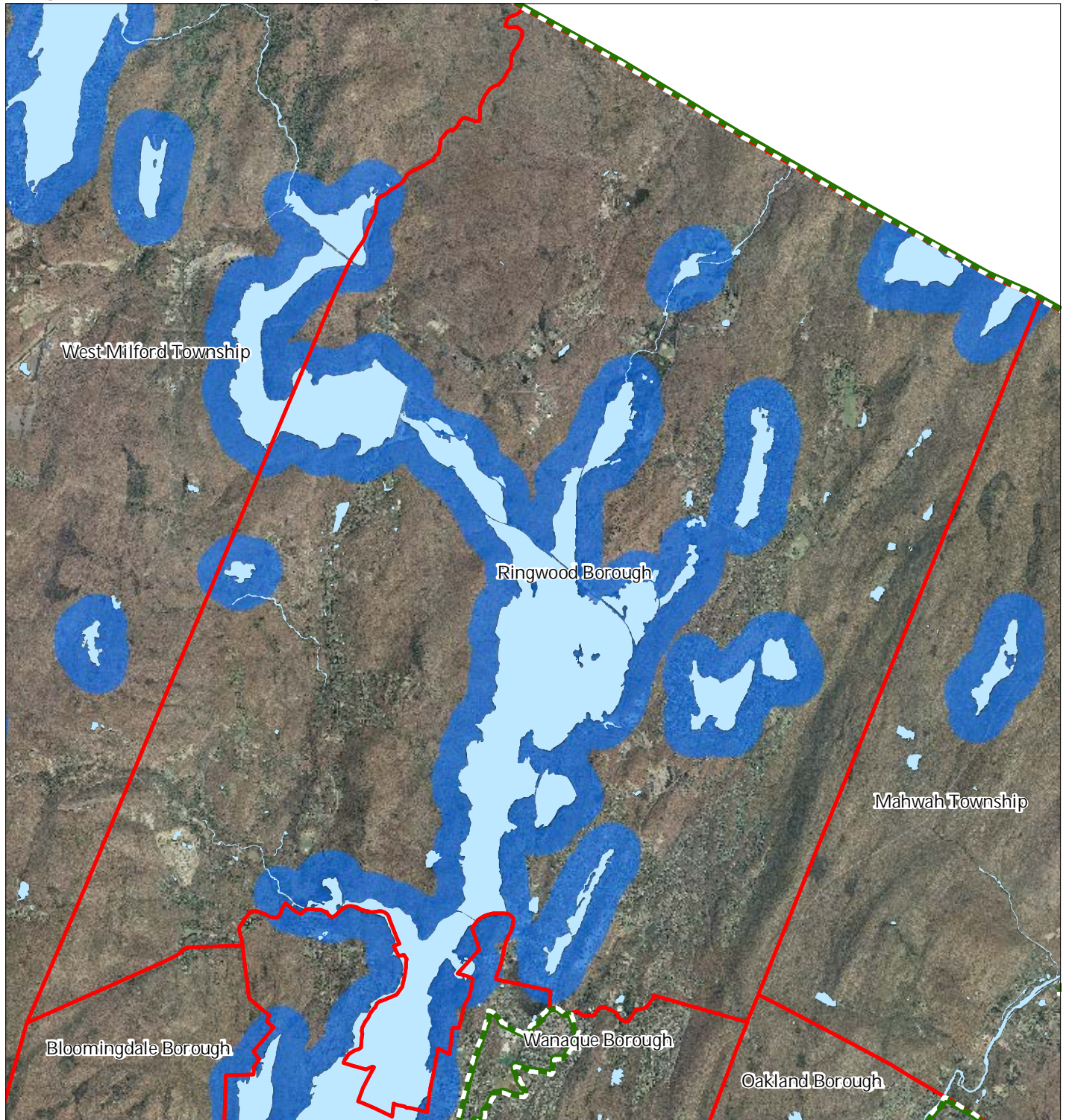


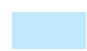



1 inch = 0.91 miles

 Highlands Council
New Jersey

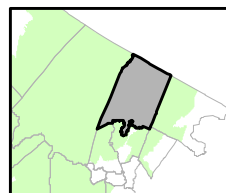
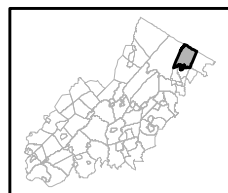


Figure 19: Lake Management Areas



-  Lakes & Ponds
-  Lake Management Areas
-  Preservation Area
-  Municipal Boundaries

Ringwood Borough

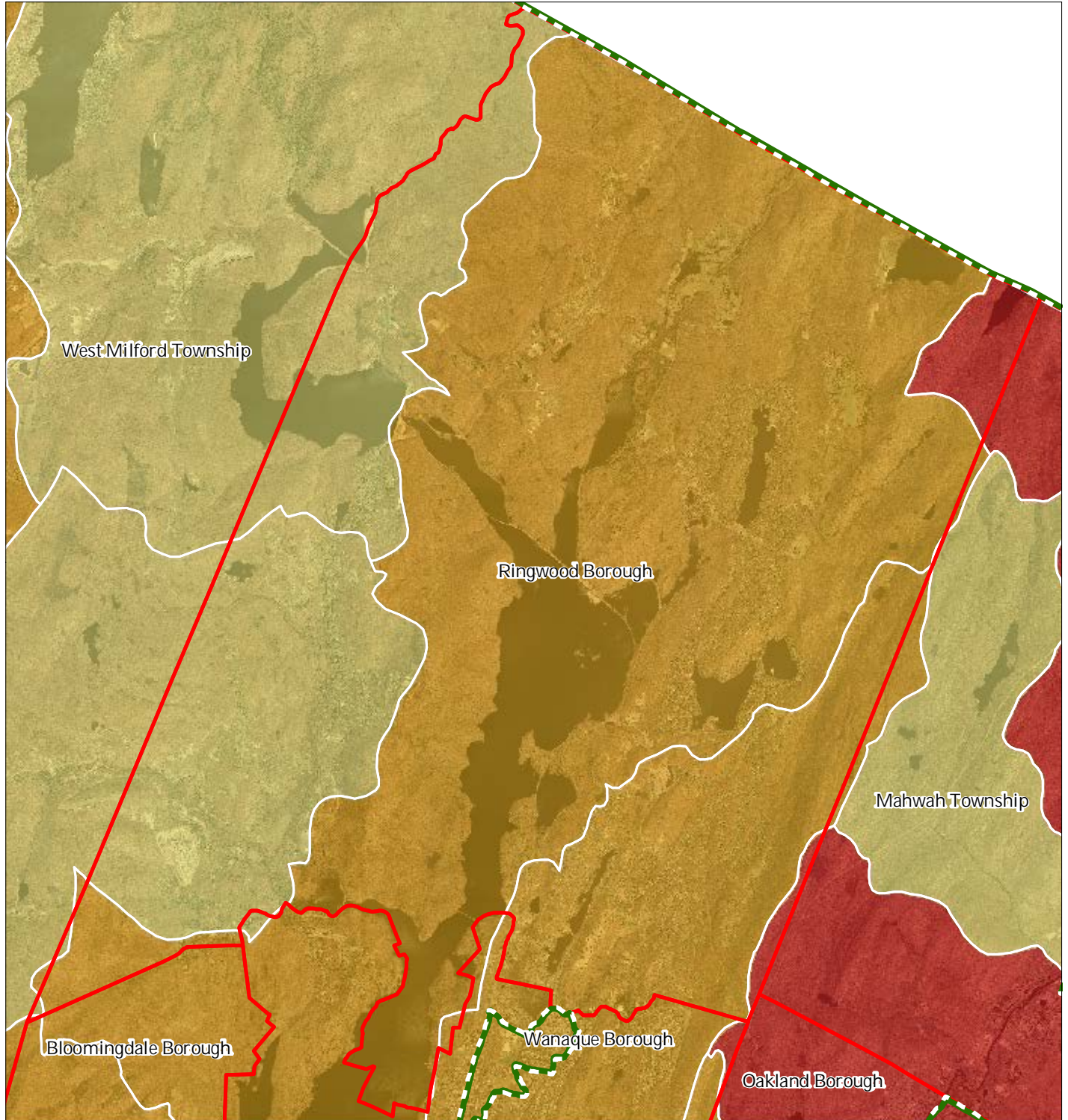


1 inch = 0.91 miles

Highlands Council
New Jersey

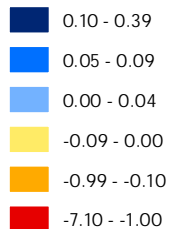




Figure 20: Net Water Availability

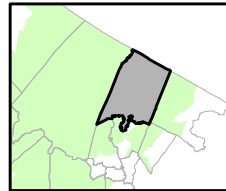
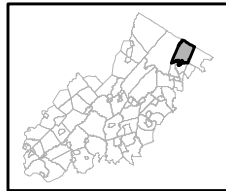


Net Water Availability By HUC14

Million Gallons Per Day (MGD)



 Preservation Area
 Municipal Boundaries



Ringwood Borough

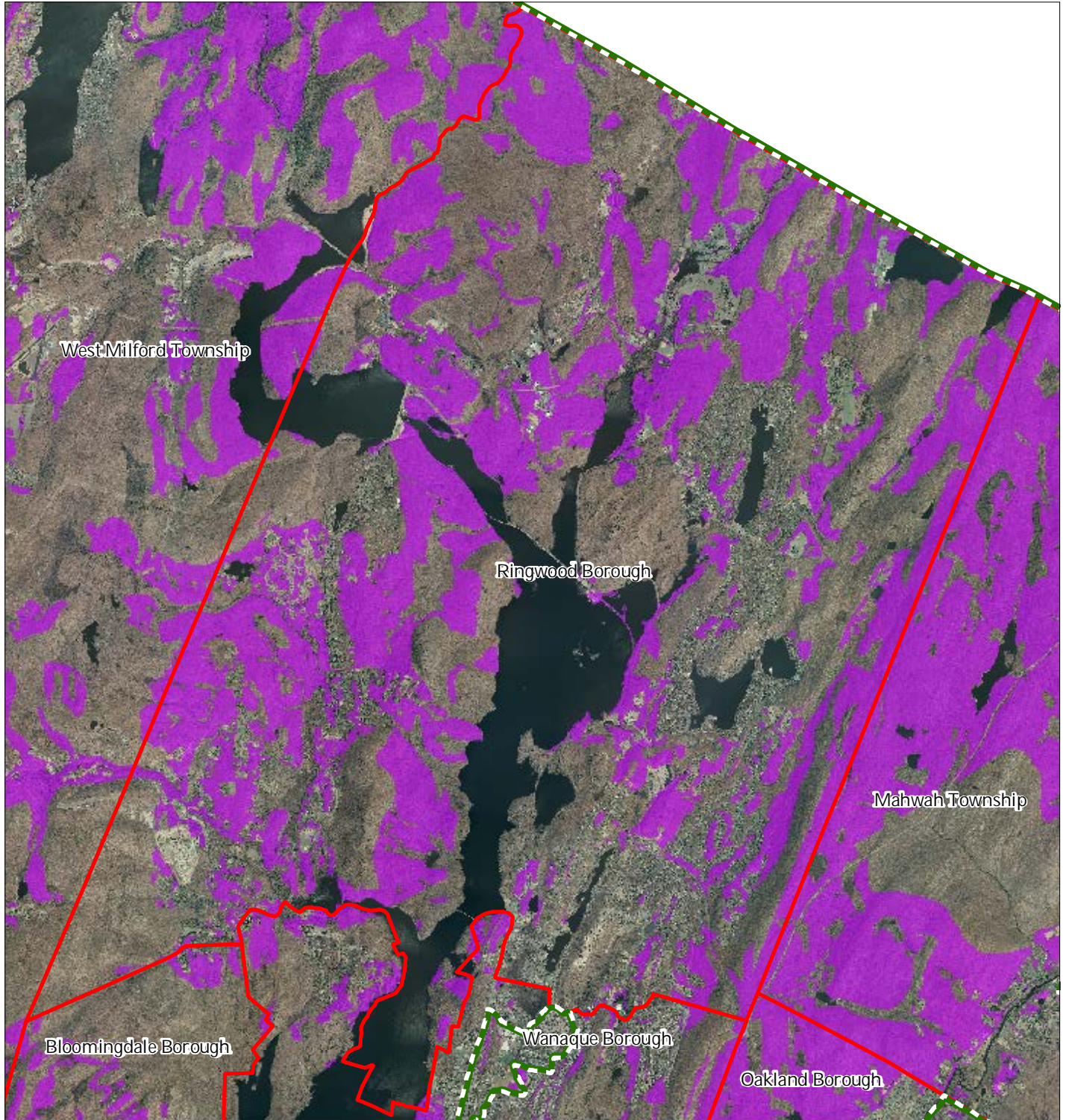
1 inch = 0.91 miles





Highlands Council
New Jersey



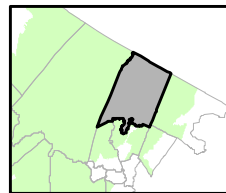
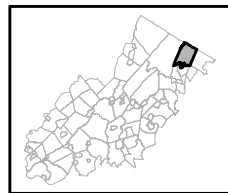
08/2011

Figure 21: Prime Ground Water Recharge Areas



-  Prime Groundwater Recharge Areas
-  Preservation Area
-  Municipal Boundaries

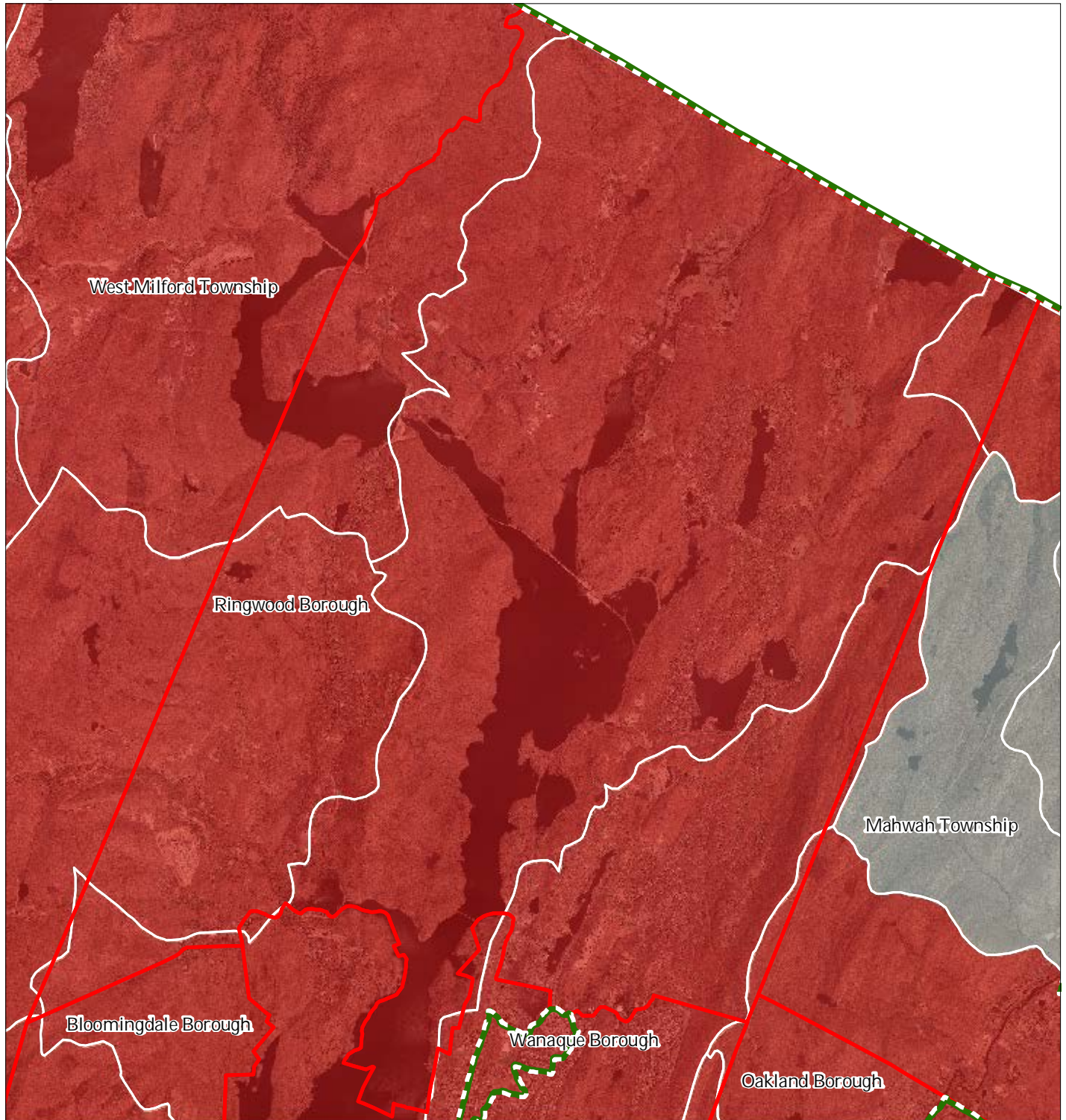
Ringwood Borough



1 inch = 0.91 miles



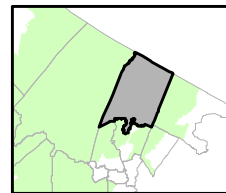
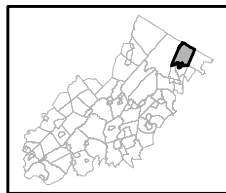
Figure 22: HUC 14s on NJDEP Impaired Waters List



Impaired Waters Overall Assessment by HUC14 Subwatershed

Ringwood Borough

- Non Impacted*
- Insufficient Data Available*
- Moderate*
- Water Quality Impaired*
- Preservation Area
- Municipal Boundaries



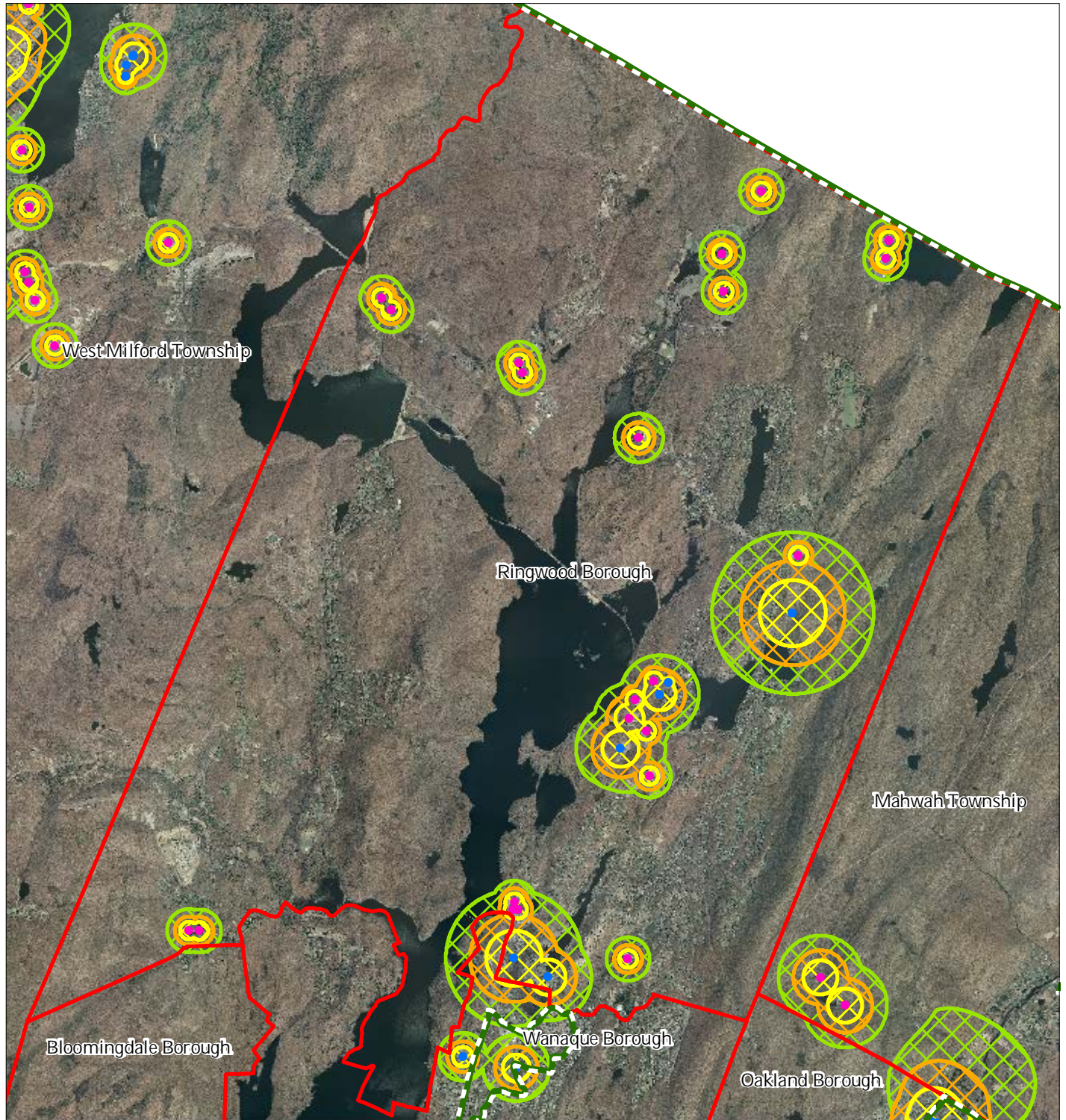
1 inch = 0.91 miles

**Highlands
Council**
New Jersey



08/2011

Figure 23: Wellhead Protection Areas



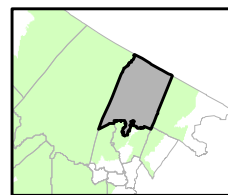
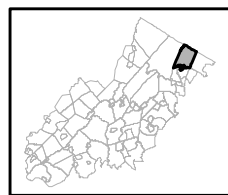
- Public Community Wells
- Public Non-Community Wells

Wellhead Protection Areas

- 2-Year Tier
- 5-Year Tier
- 12-Year Tier

- Preservation Area
- Municipal Boundaries

Ringwood Borough



1 inch = 0.91 miles

Highlands Council
New Jersey



Figure 28: Historic, Cultural, and Archaeological Resources Inventory

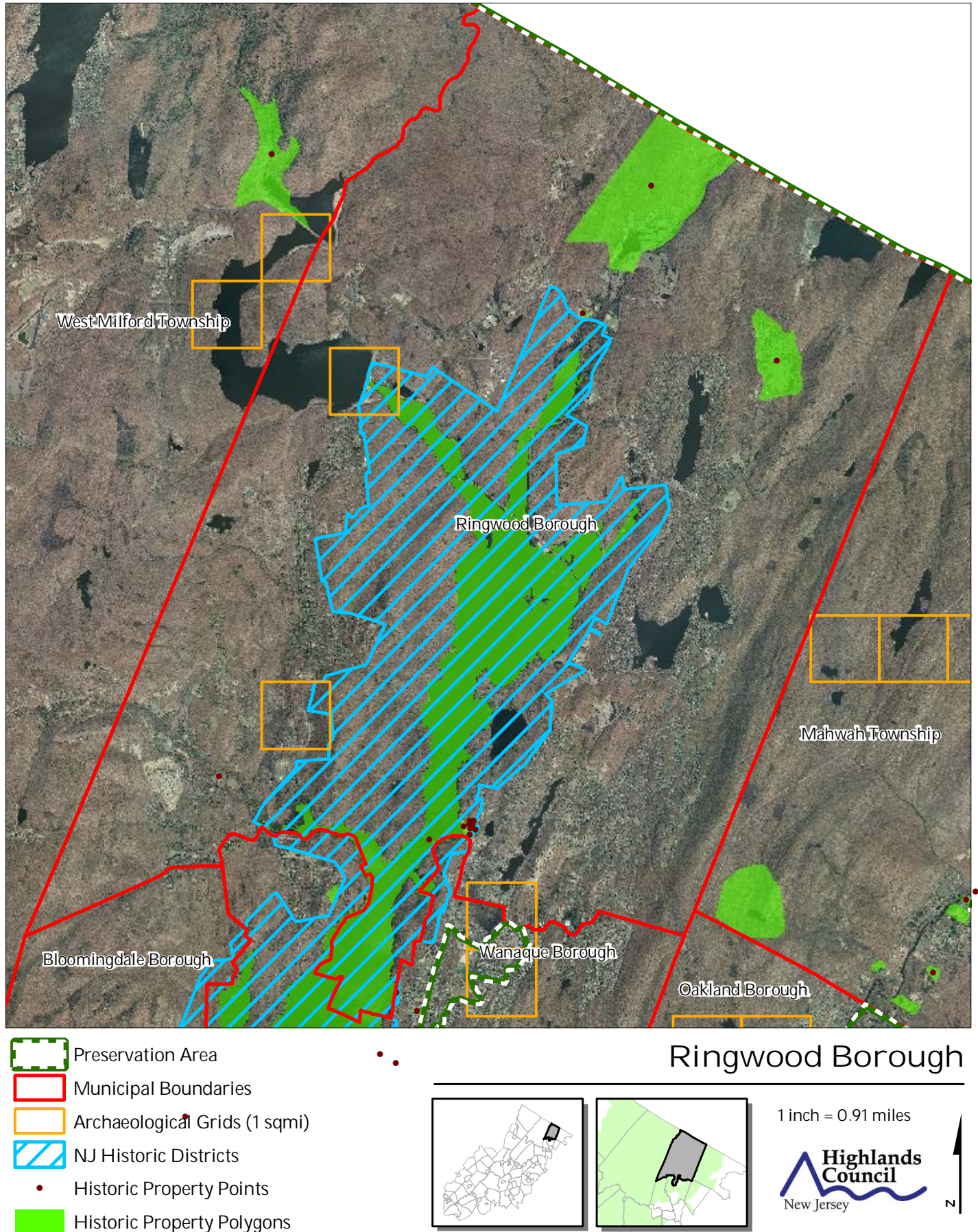
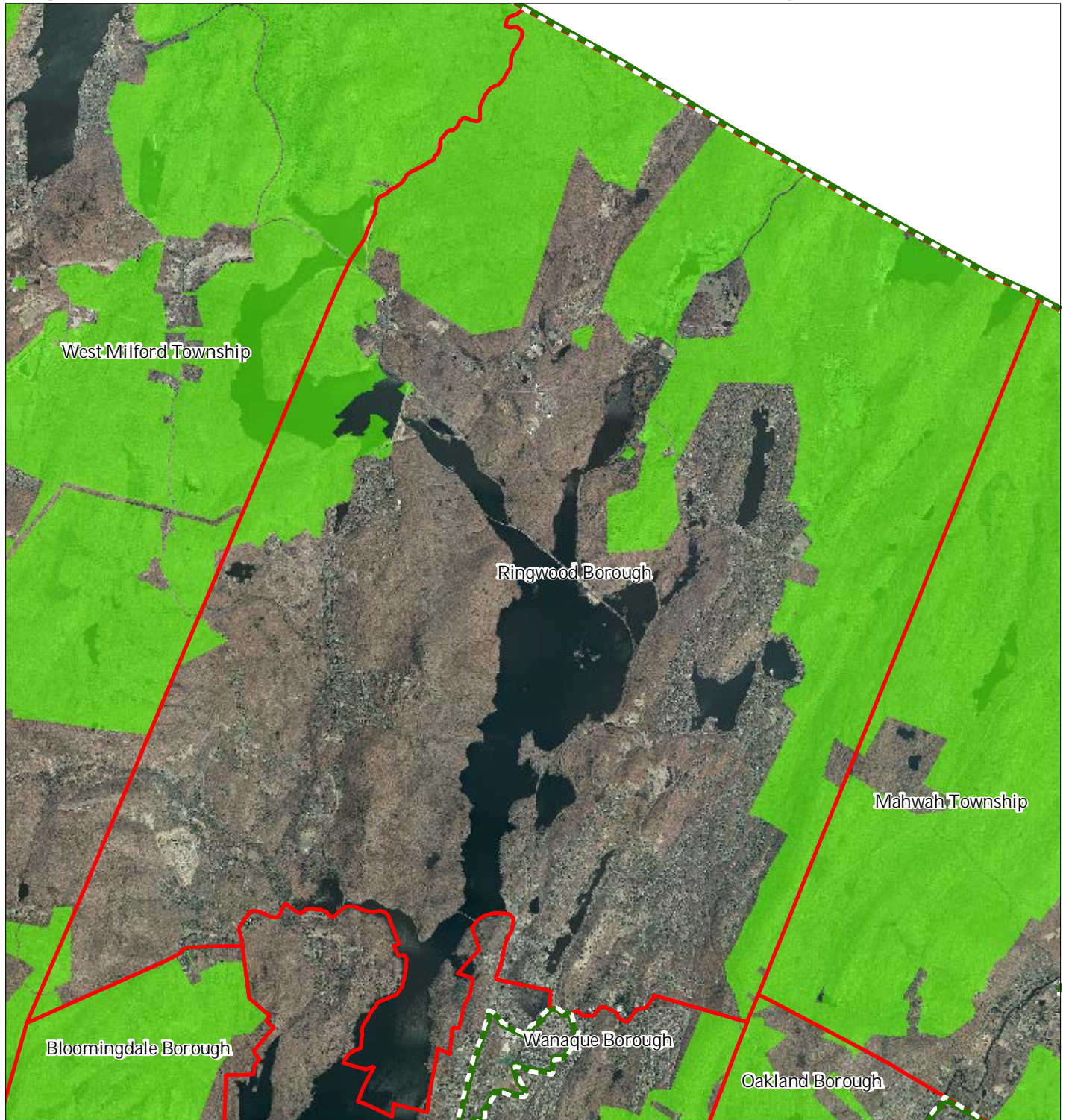



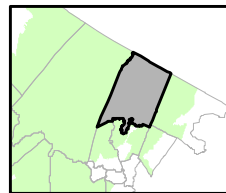
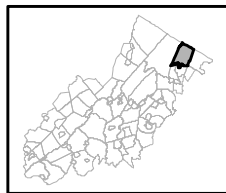


Figure 29: Baseline Scenic Resources Inventory



Ringwood Borough

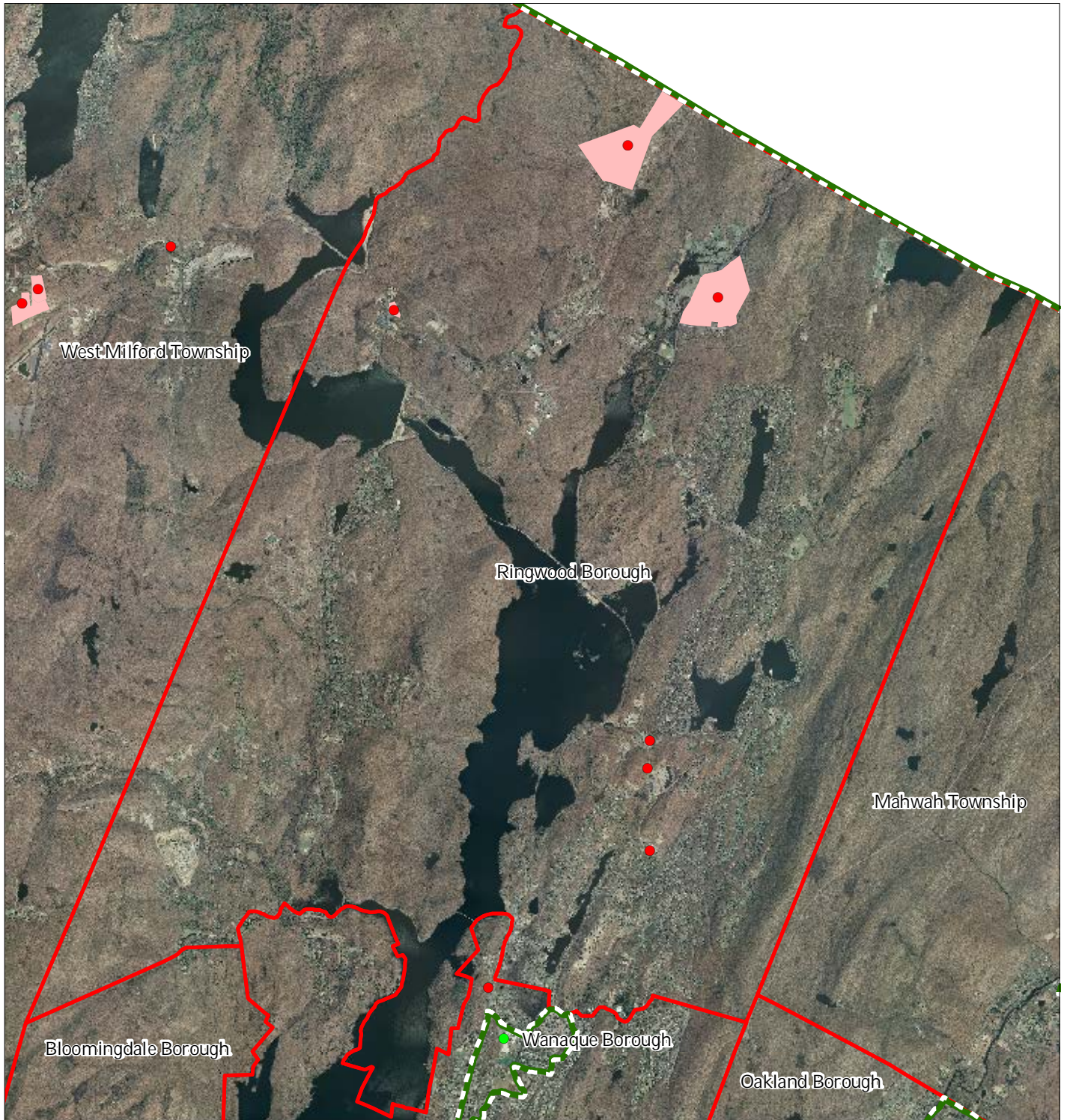
-  Scenic Resources
-  Municipal Boundaries
-  Preservation Area



1 inch = 0.91 miles



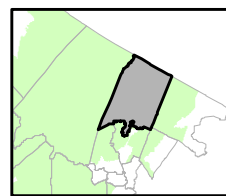
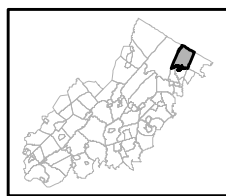
Figure 30: Highlands Contaminated Site Inventory



Highlands Contaminated Site Inventory

Ringwood Borough

- Tier 1 Sites
- Tier 1 Sites (Polygons)
- Tier 2 Sites
- ▬ Preservation Area
- ▬ Municipal Boundaries

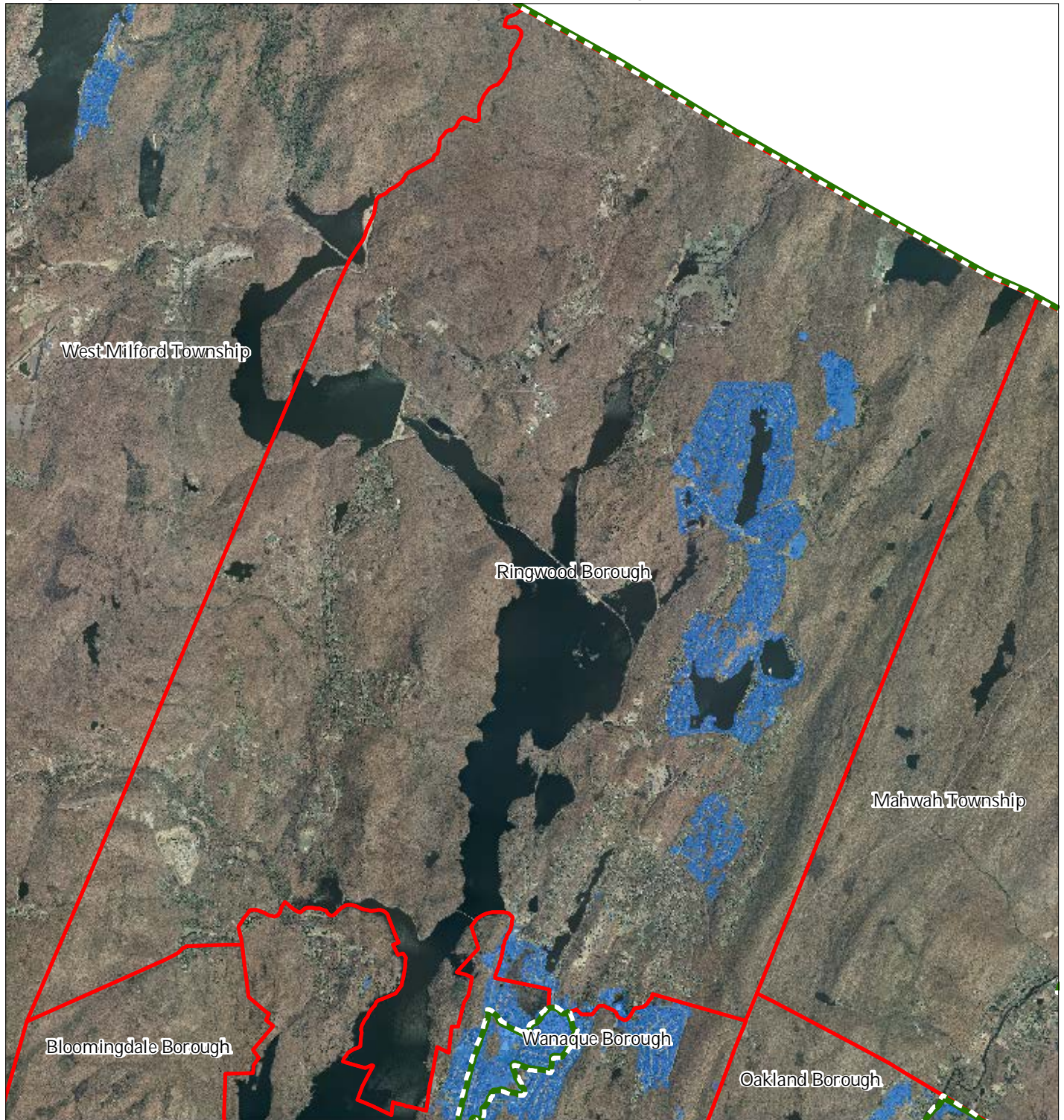





1 inch = 0.91 miles



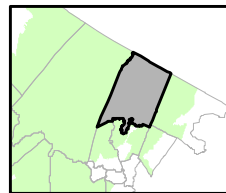
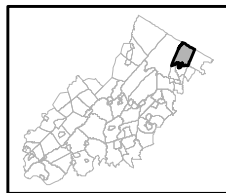
08/2011

Figure 31: Public Community Water Systems



-  Public Community Water Systems
-  Preservation Area
-  Municipal Boundaries

Ringwood Borough

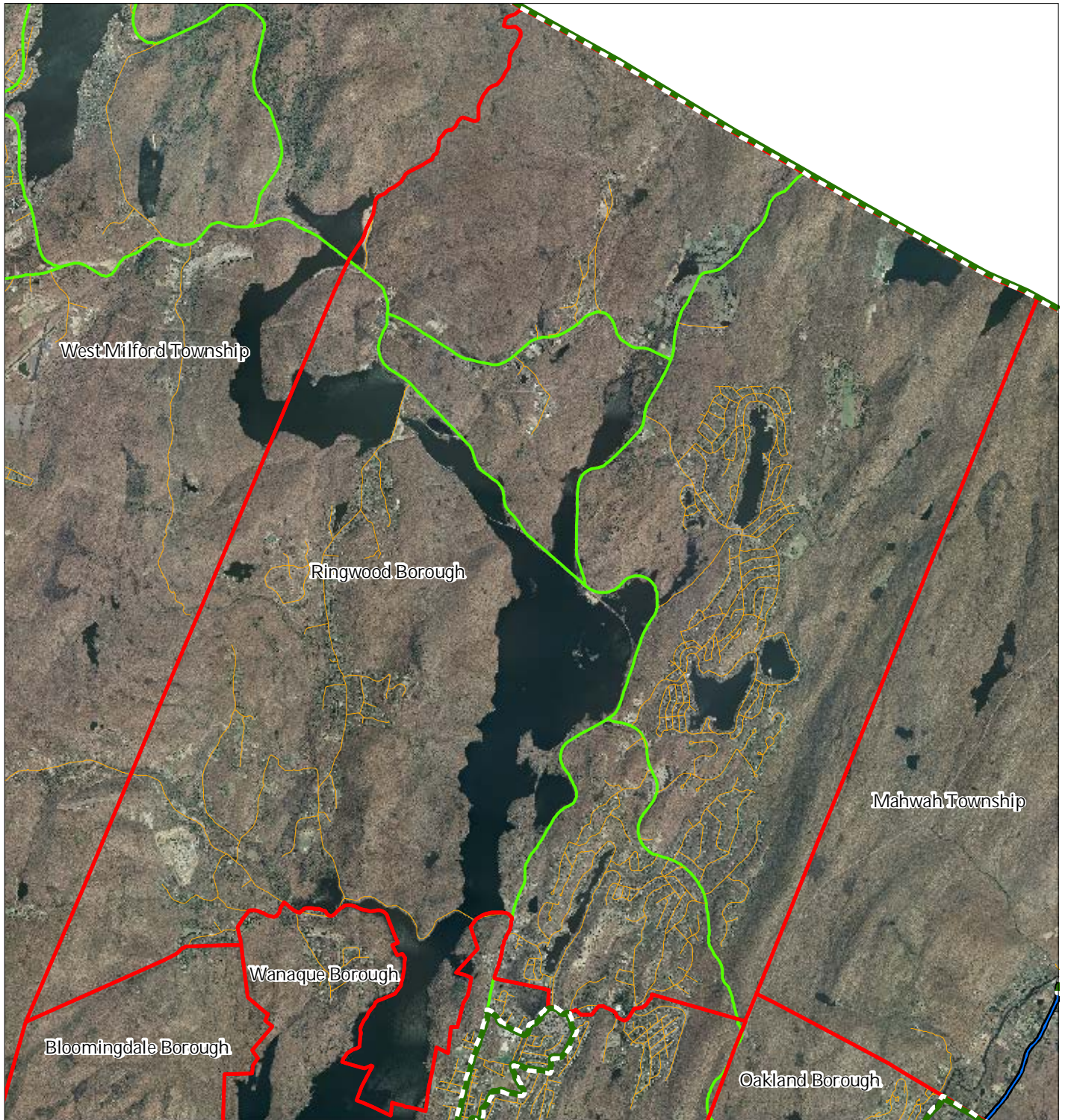


1 inch = 0.91 miles

**Highlands Council**
New Jersey




Figure 33: Highlands Roadway Network



Roadway Network

 Interstate Highways

 U.S. Routes

 State Routes

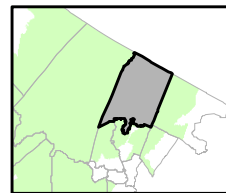
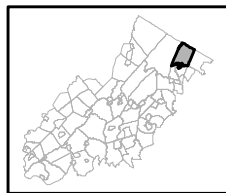
 County Routes

 Local Routes

 Preservation Area

 Municipal Boundaries

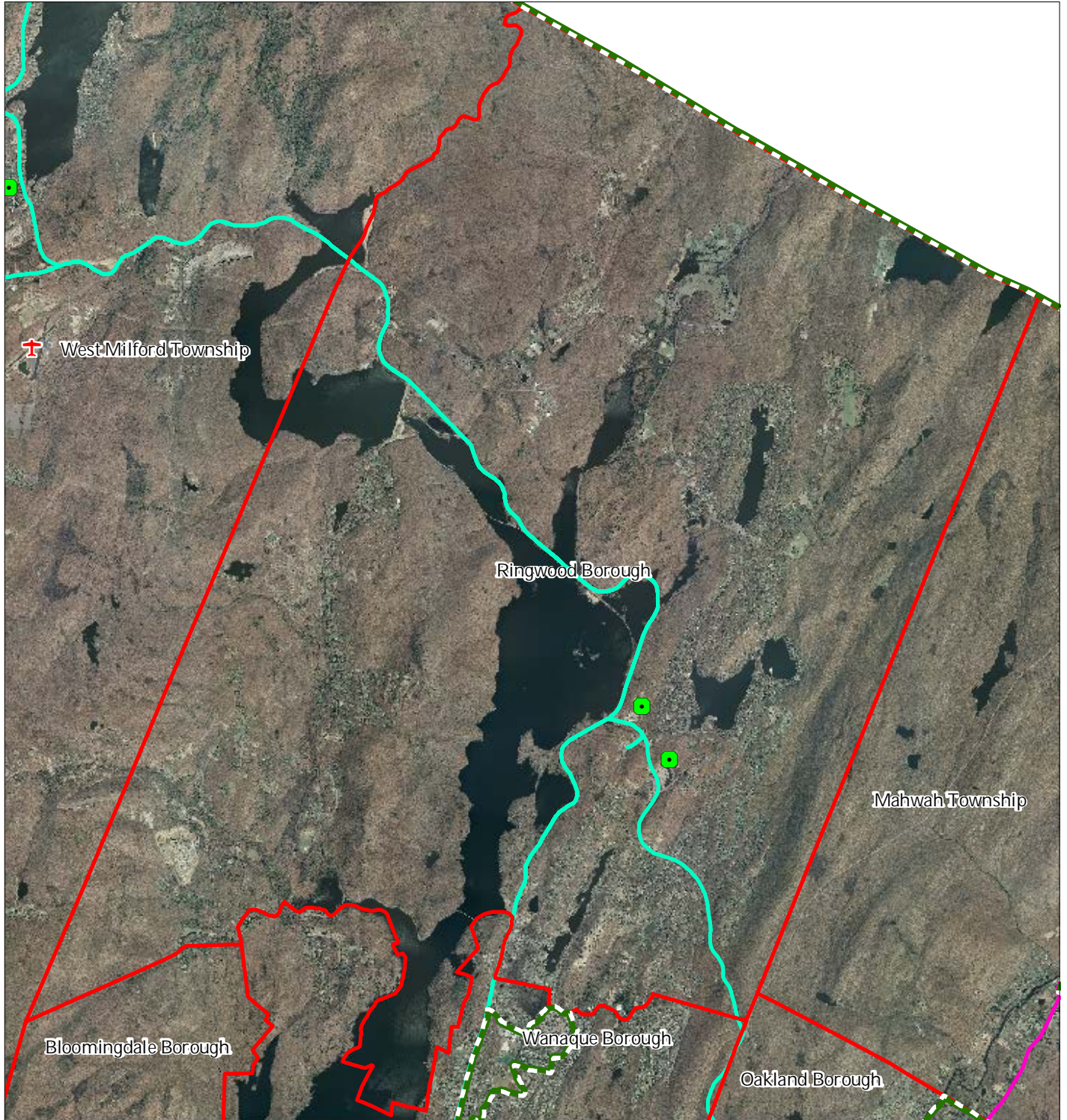
Ringwood Borough



1 inch = 0.91 miles

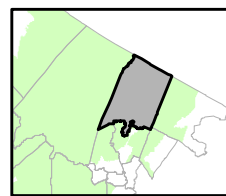
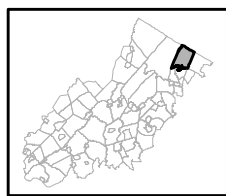


Figure 34: Highlands Transit Network



- Rail Network**
- Boonton Line
 - Main Line & Bergen County Line
 - Morris and Essex Line
 - Raritan Valley Line
- Freight Rail Lines**
- Freight Rail Lines
 - Abandoned Freight Rail
- Rail Stations
 - Park and Ride Sites
 - Private Bus Lines
 - NJ Transit Bus Lines
 - + Airports

Ringwood Borough



1 inch = 0.91 miles

