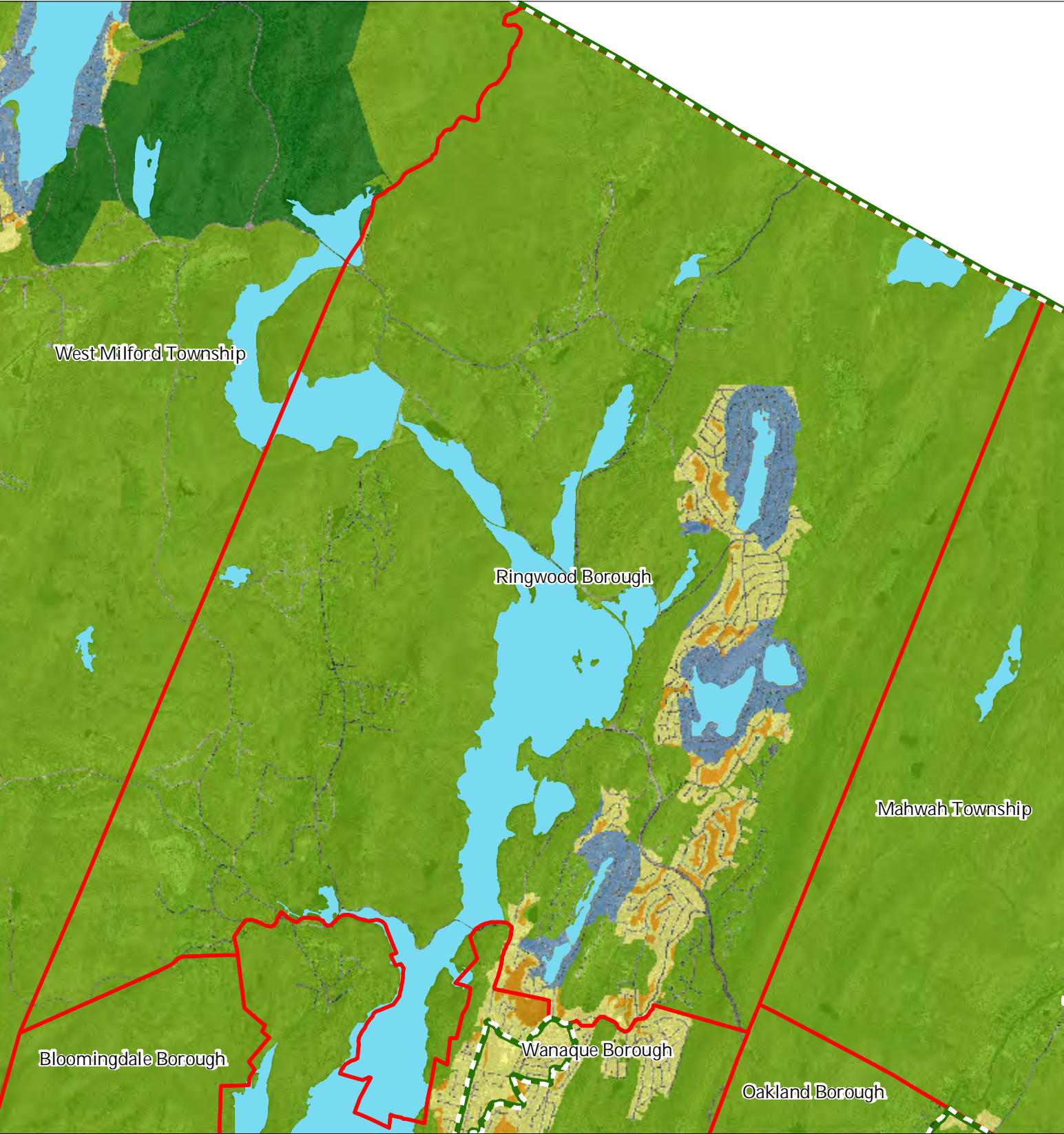


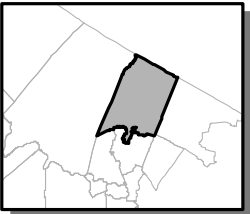
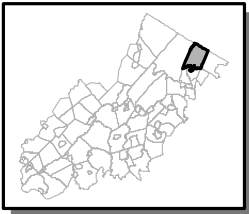
Exhibit A: Land Use Capability Map Zones



Regional Master Plan Overlay Zone Designation

- | | |
|--|-----------------------------|
| Zone | |
| Protection | Lakes Greater Than 10 acres |
| Conservation | Preservation Area |
| Existing Community | Municipal Boundaries |
| Sub-Zone | |
| Existing Community Environmentally Constrained | |
| Conservation Environmentally Constrained | |
| Lake Community | |
| Wildlife Management | |

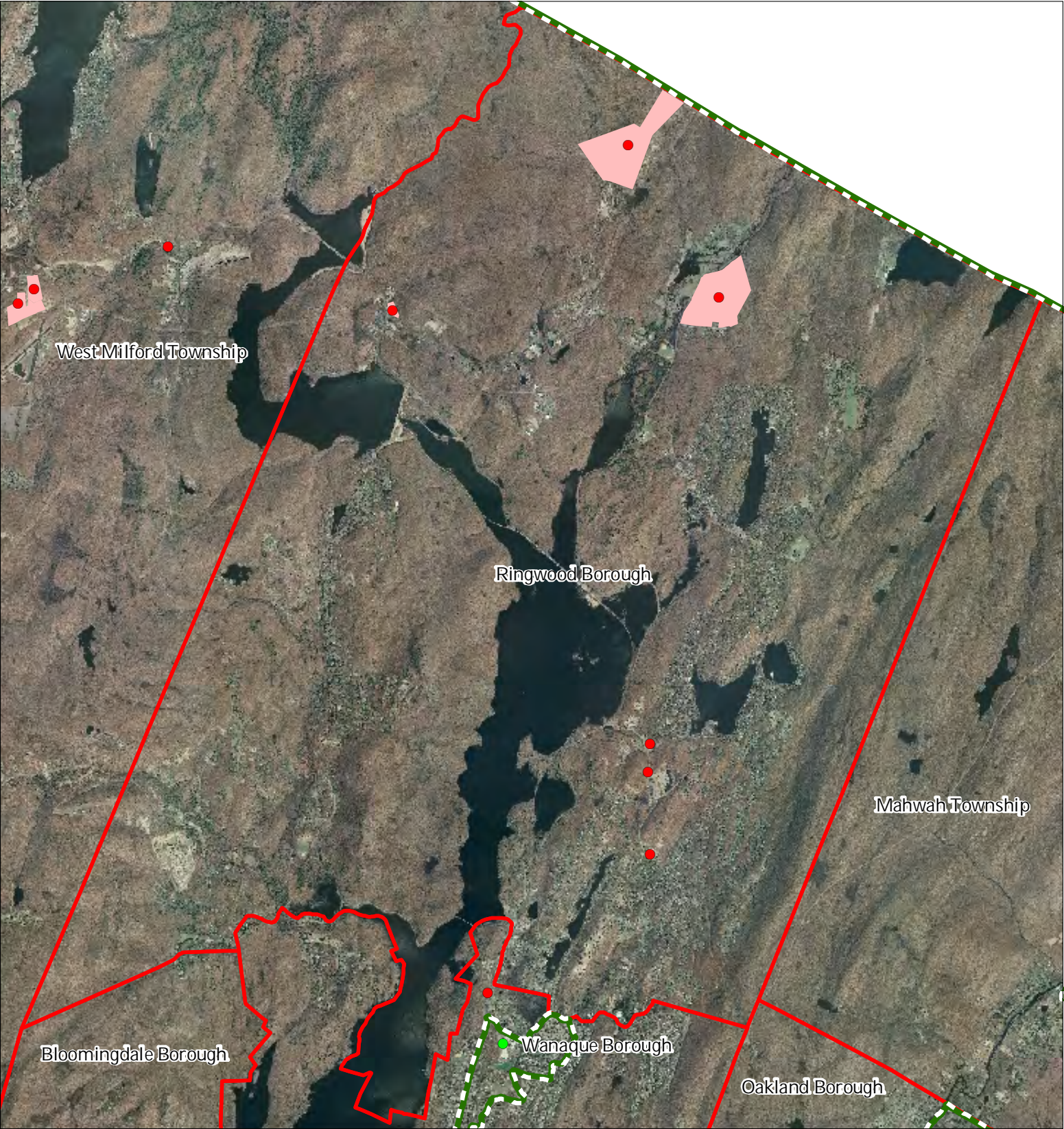
Ringwood Borough



1 inch = 0.91 miles



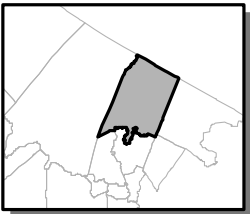
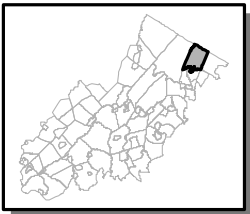
Exhibit C: Highlands Contaminated Site Inventory



Highlands Contaminated Site Inventory

Ringwood Borough

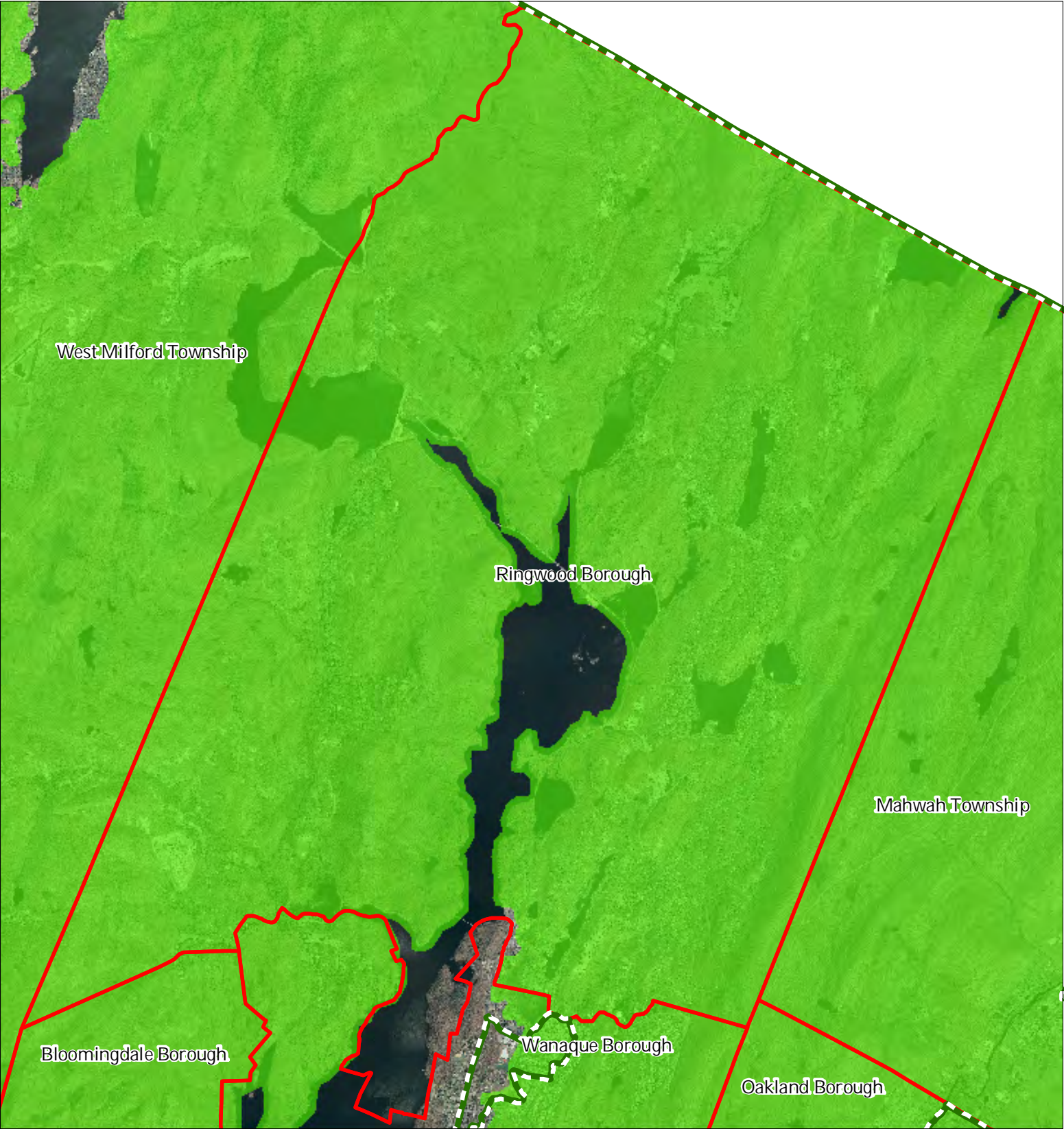
- Tier 1 Sites
- Tier 1 Sites (Polygons)
- Tier 2 Sites
- Preservation Area
- Municipal Boundaries






1 inch = 0.91 miles

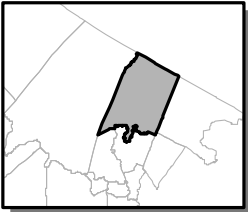
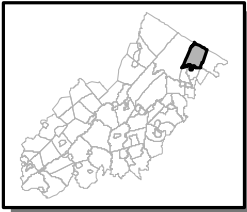


Exhibit E: Forest Resource Area



-  Forest Resource Area
-  Preservation Area
-  Municipal Boundaries

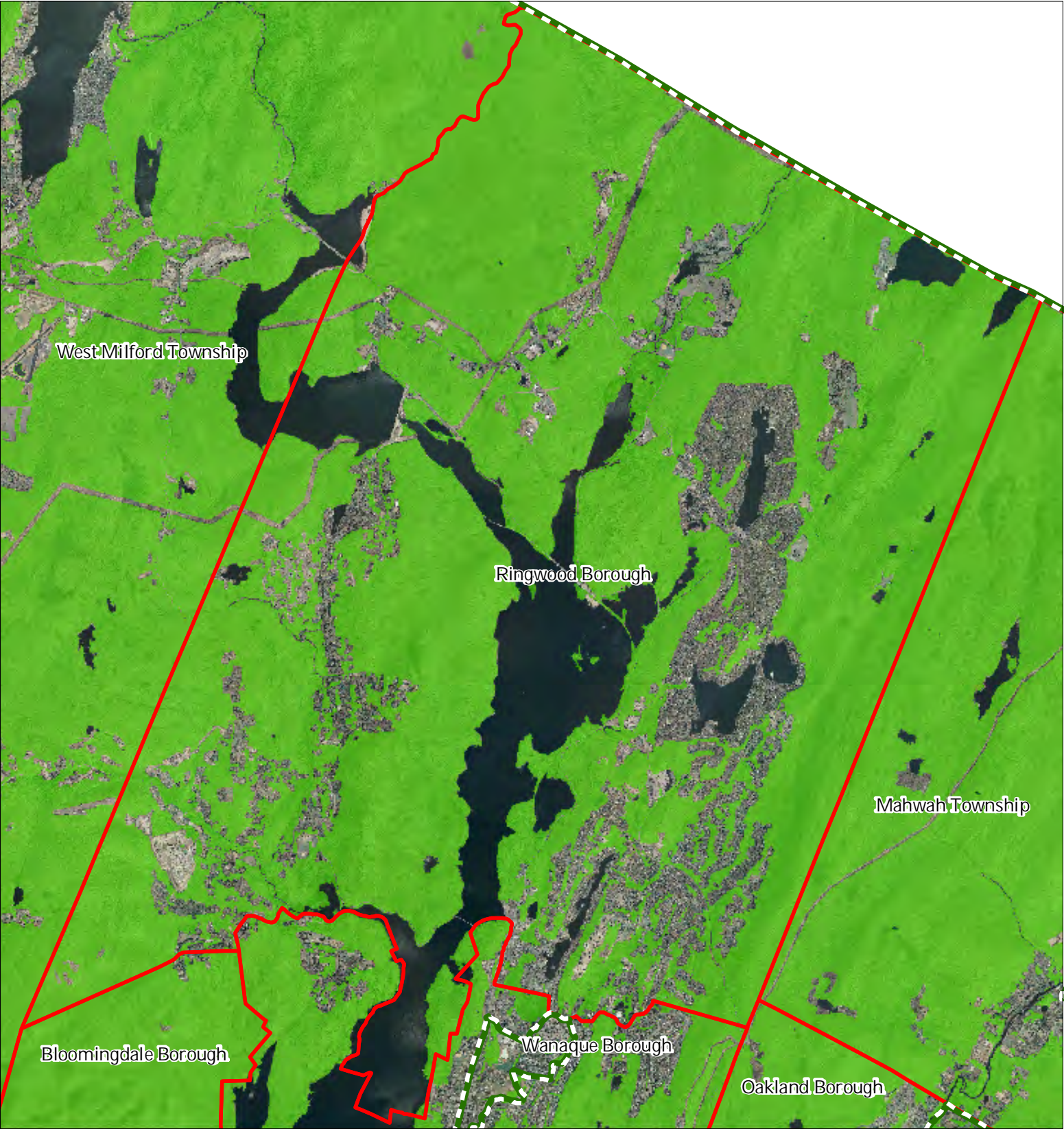
Ringwood Borough






1 inch = 0.91 miles

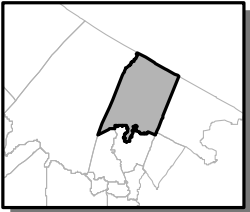
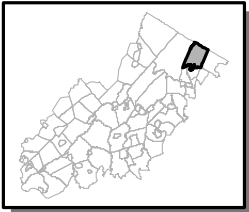


Exhibit F: Total Forest Area



-  Forested Areas
-  Preservation Area
-  Municipal Boundaries

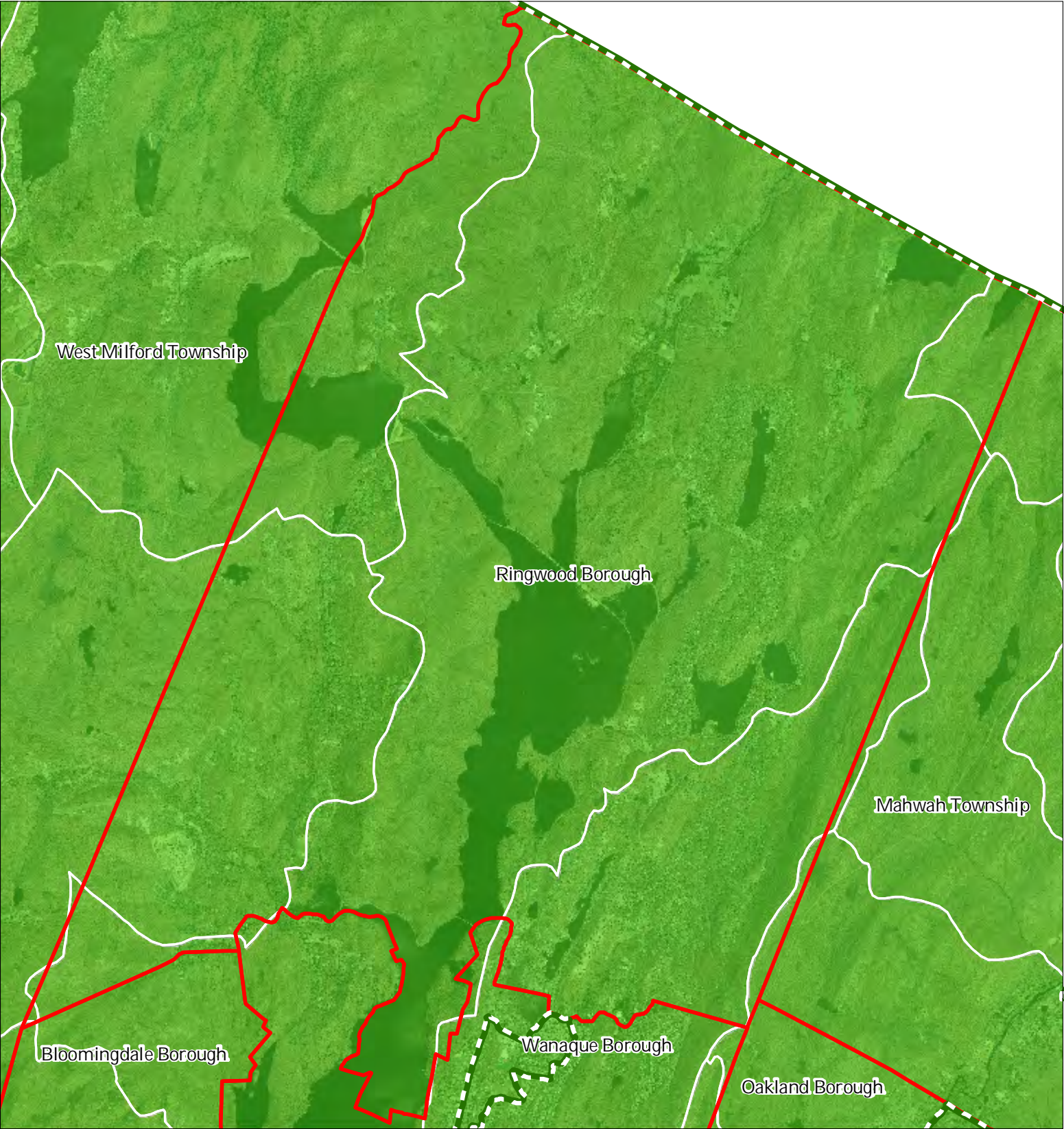
Ringwood Borough



1 inch = 0.91 miles



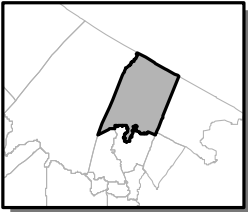
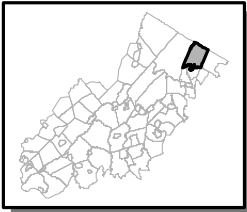
Exhibit G: Forest Subwatersheds



Forest Integrity by HUC14 Subwatershed

- Low
- Moderate
- High
- Preservation Area
- Municipal Boundaries

Ringwood Borough



1 inch = 0.91 miles

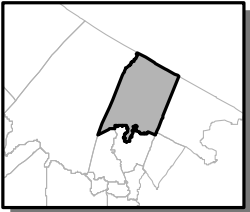
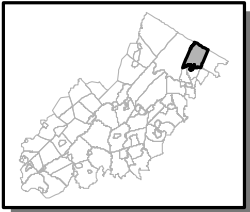


Exhibit H: Highlands Open Waters



- Highlands Open Water Buffers (300ft)
- Streams
- Wetlands
- Lakes & Ponds
- Preservation Area
- Municipal Boundaries

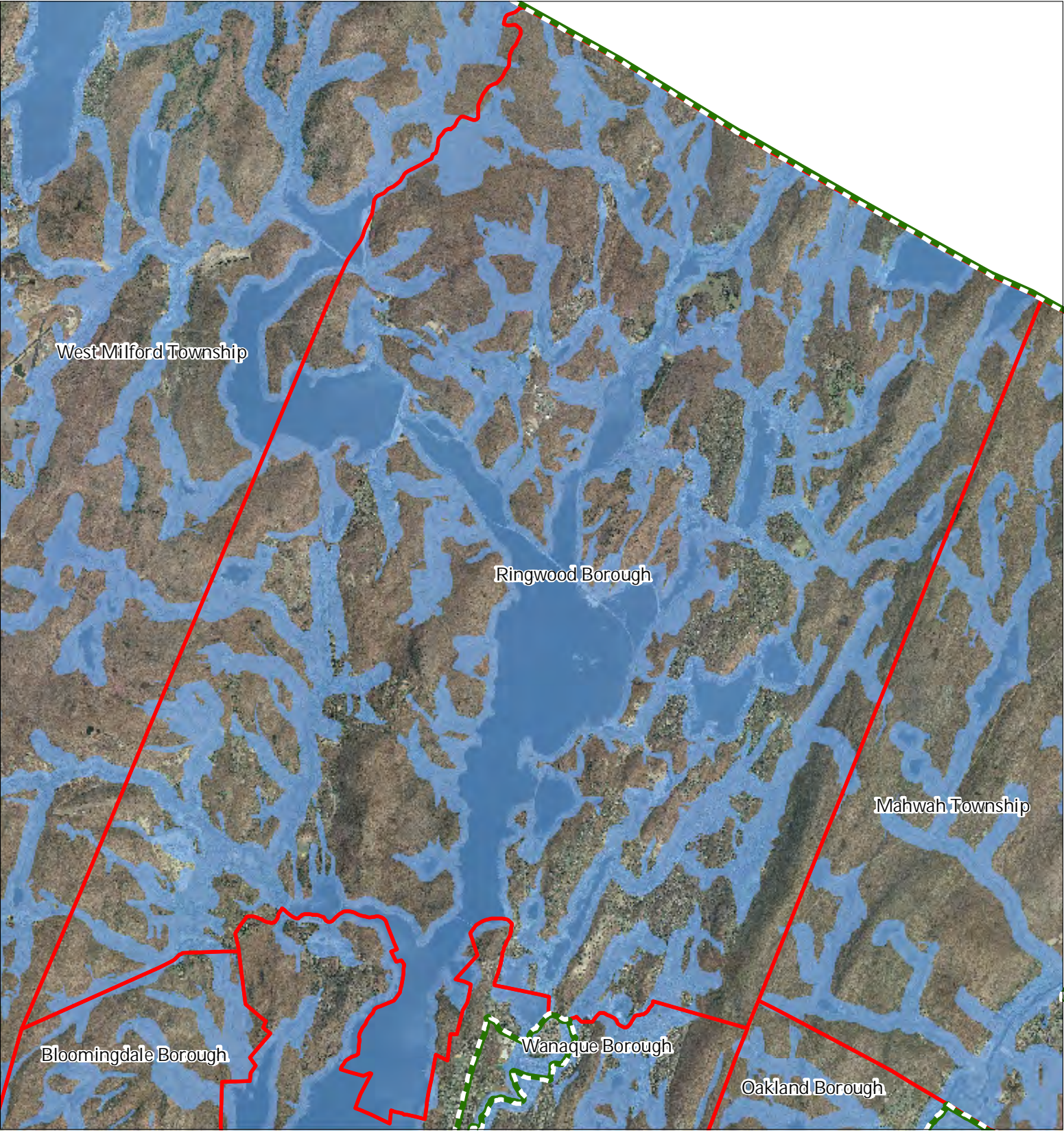
Ringwood Borough

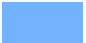




1 inch = 0.91 miles

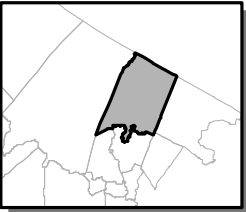
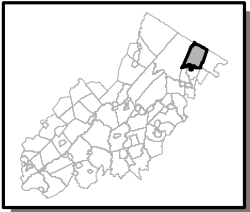


Exhibit I: Highlands Riparian Areas



-  Riparian Area
-  Preservation Area
-  Municipal Boundaries

Ringwood Borough



1 inch = 0.91 miles



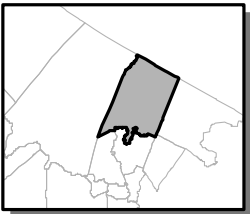
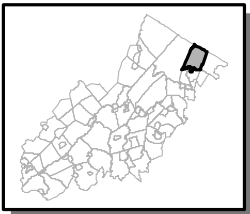
Exhibit J: Watershed Values



Watershed Values by HUC14 Subwatershed

- Low
- Moderate
- High
- Preservation Area
- Municipal Boundaries

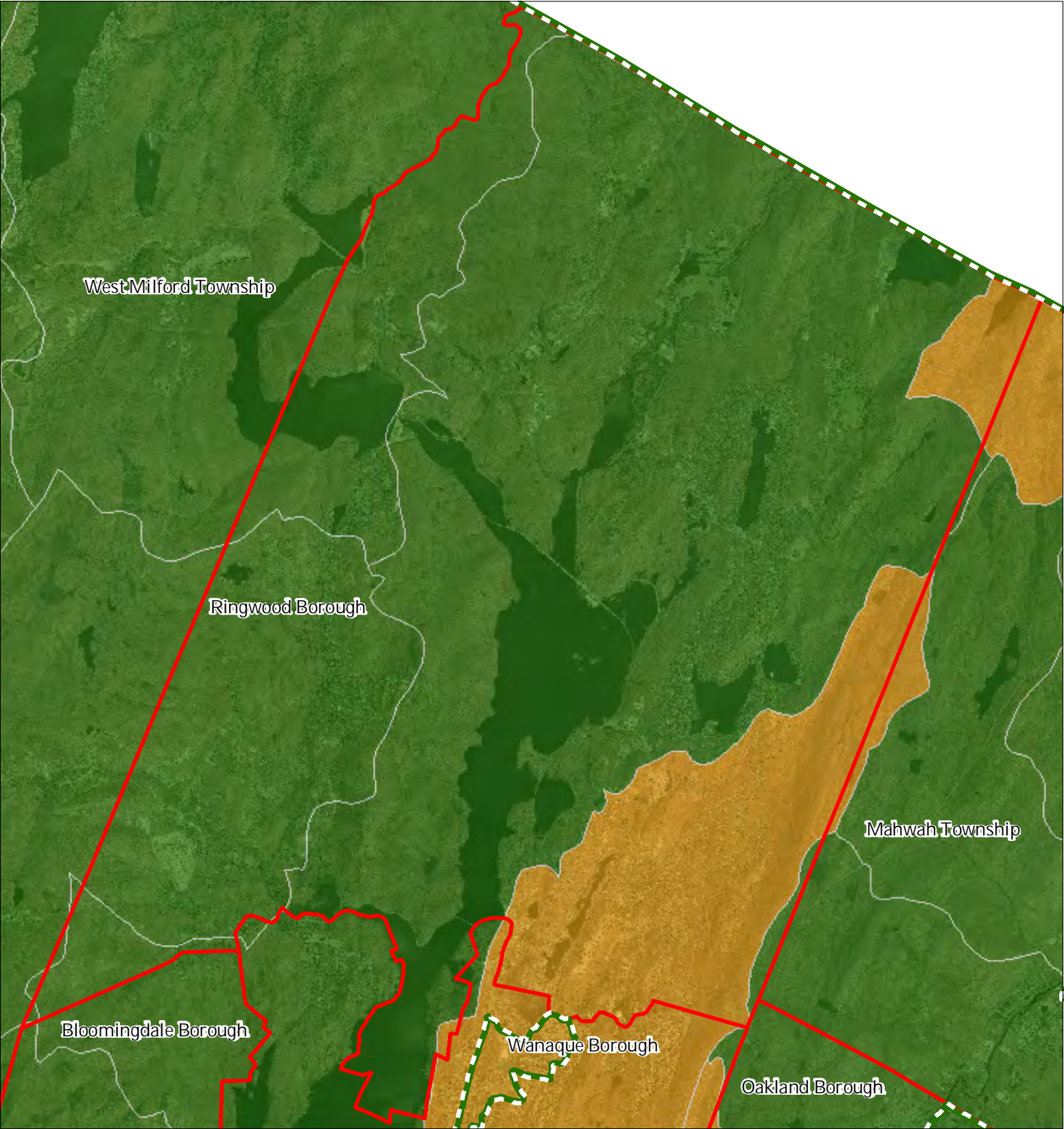
Ringwood Borough



1 inch = 0.91 miles



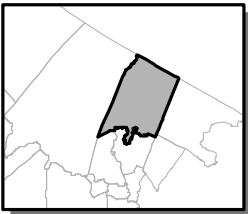
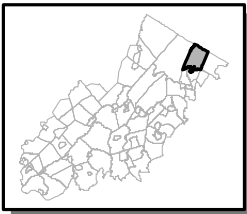
Exhibit K: Riparian Integrity



Riparian Integrity by HUC14 Subwatershed

- Low*
- Moderate*
- High*
- Preservation Area
- Municipal Boundaries

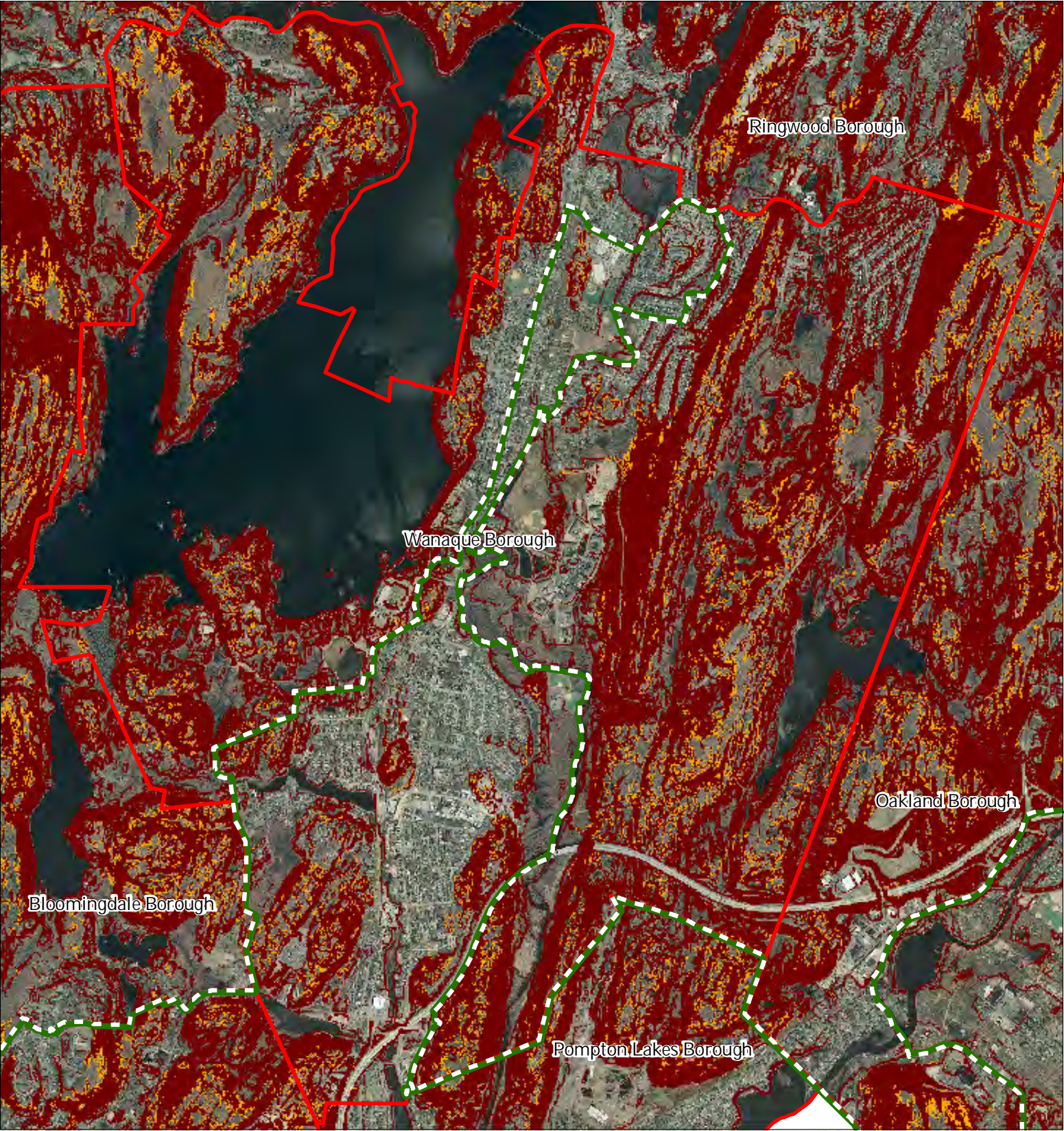
Ringwood Borough







1 inch = 0.91 miles



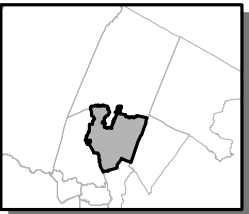
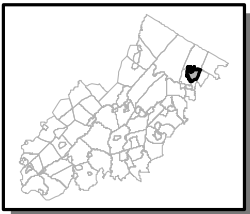
Exhibit L: Steep Slope Protection Areas



Steep Slopes

-  Moderate
-  Severe
-  Preservation Area
-  Municipal Boundaries

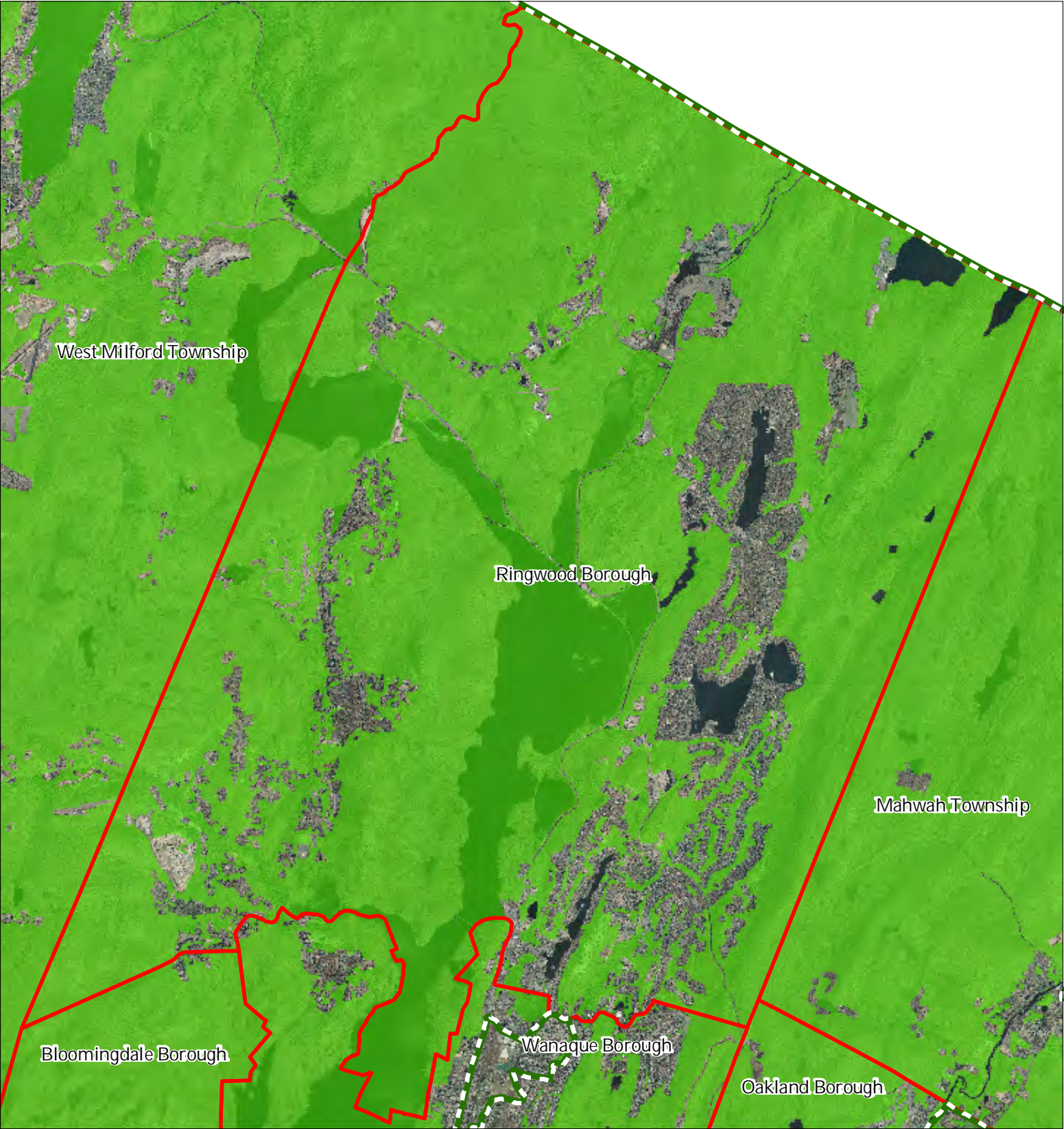
Wanaque Borough






1 inch = 0.497 miles

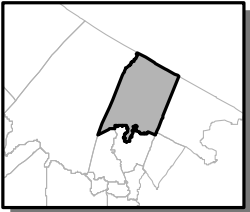
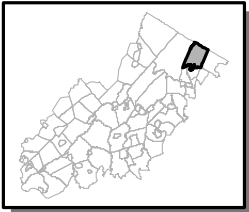


Exhibit M: Critical Wildlife Habitat



-  Critical Wildlife Habitat
-  Preservation Area
-  Municipal Boundaries

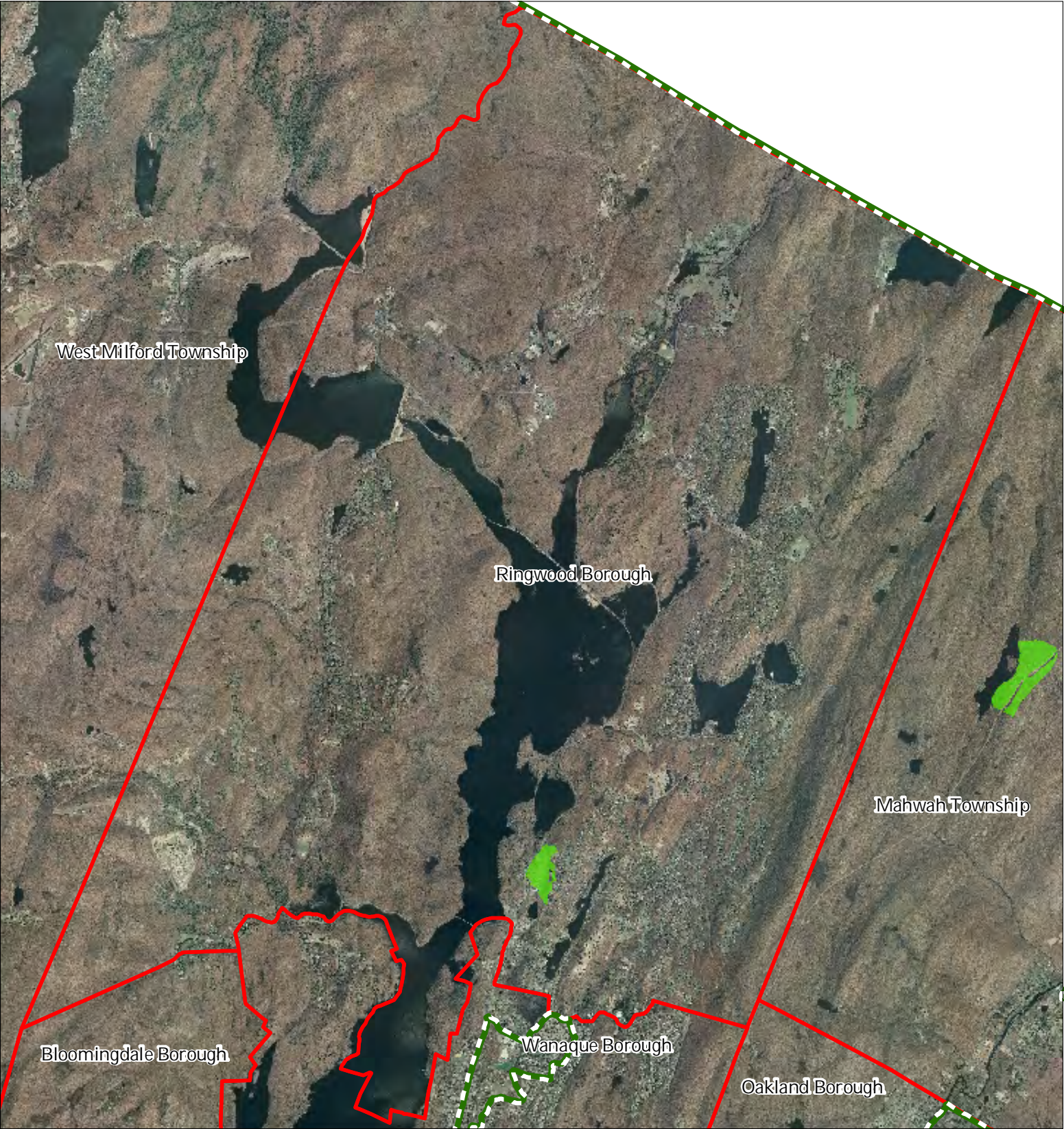
Ringwood Borough






1 inch = 0.91 miles

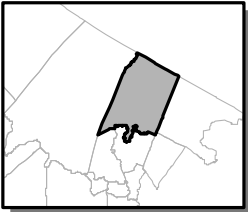
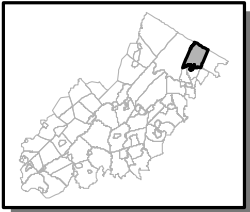


Exhibit N: Significant Natural Areas



-  Significant Natural Areas
-  Preservation Area
-  Municipal Boundaries

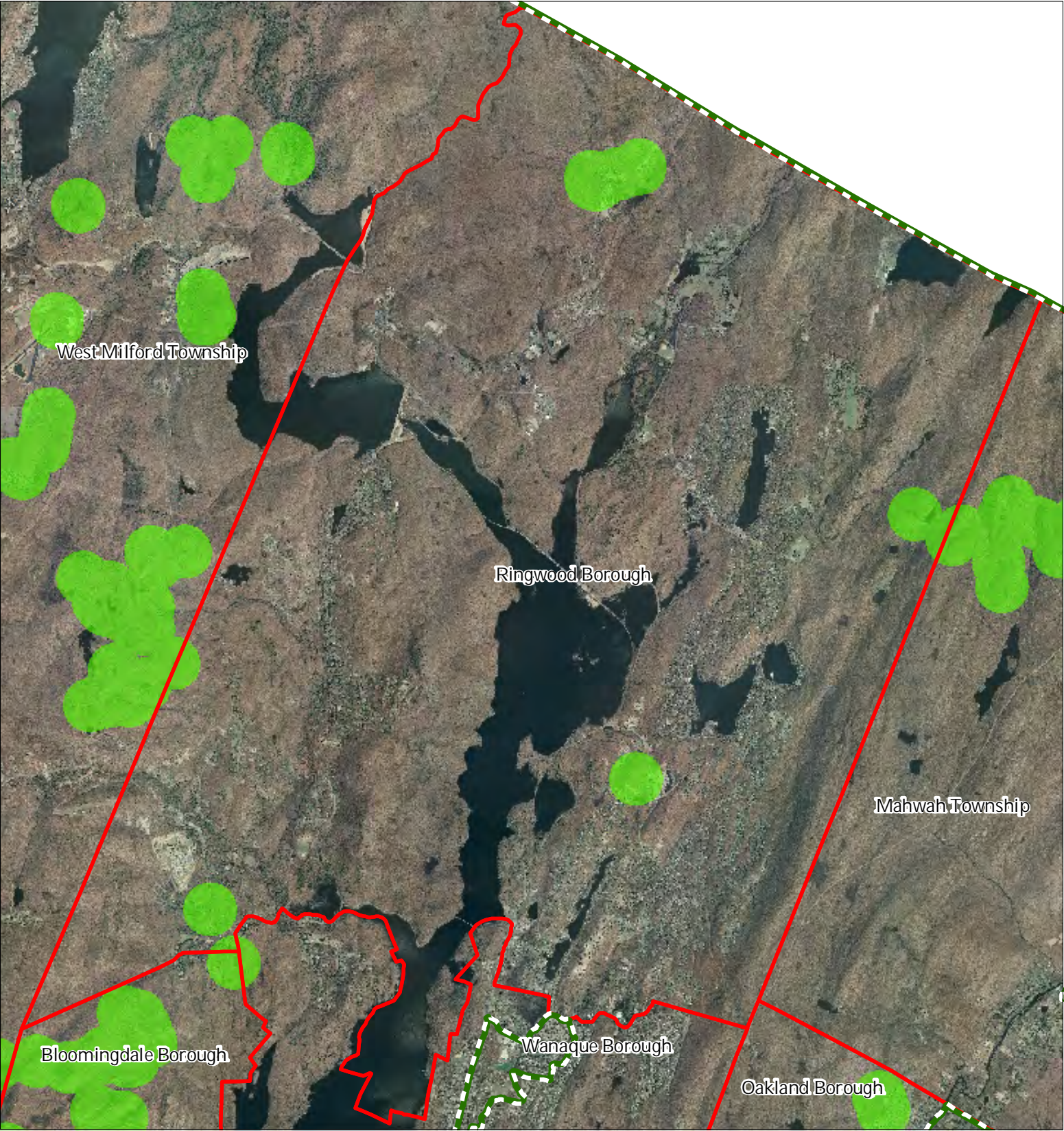
Ringwood Borough






1 inch = 0.91 miles

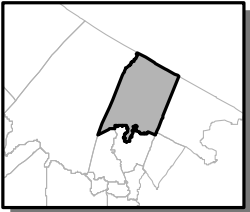
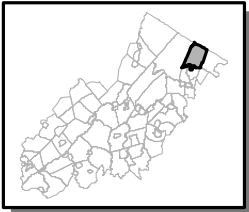


Exhibit O: Vernal Pools



-  Vernal Pools + 1000ft Buffer
-  Preservation Area
-  Municipal Boundaries

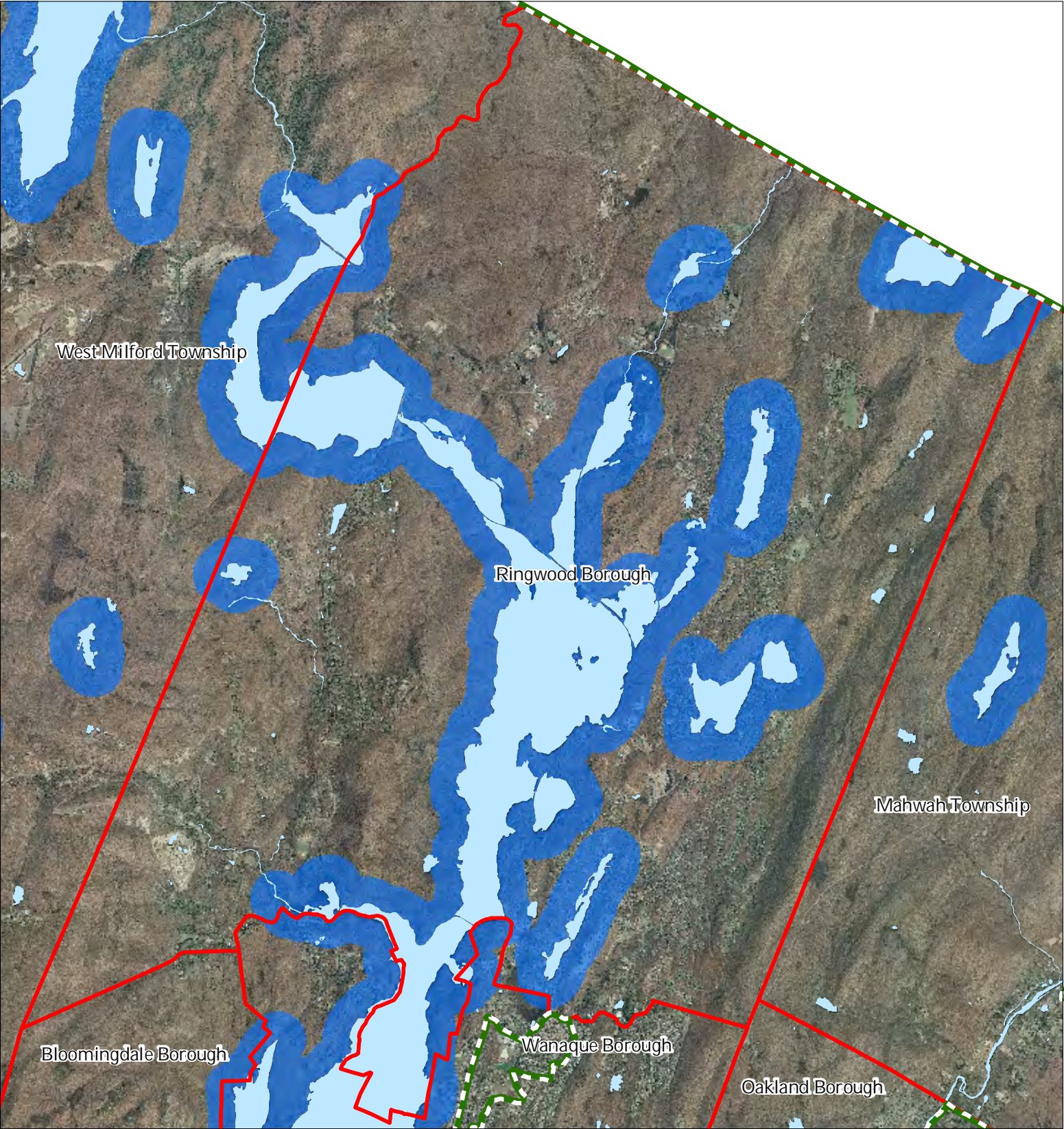
Ringwood Borough







1 inch = 0.91 miles

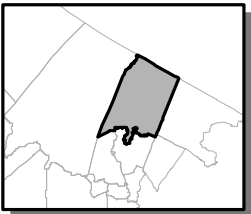
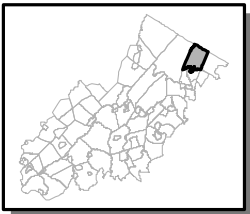


Exhibit Q: Lake Management Area



-  Lakes & Ponds
-  Lake Management Area
-  Preservation Area
-  Municipal Boundaries

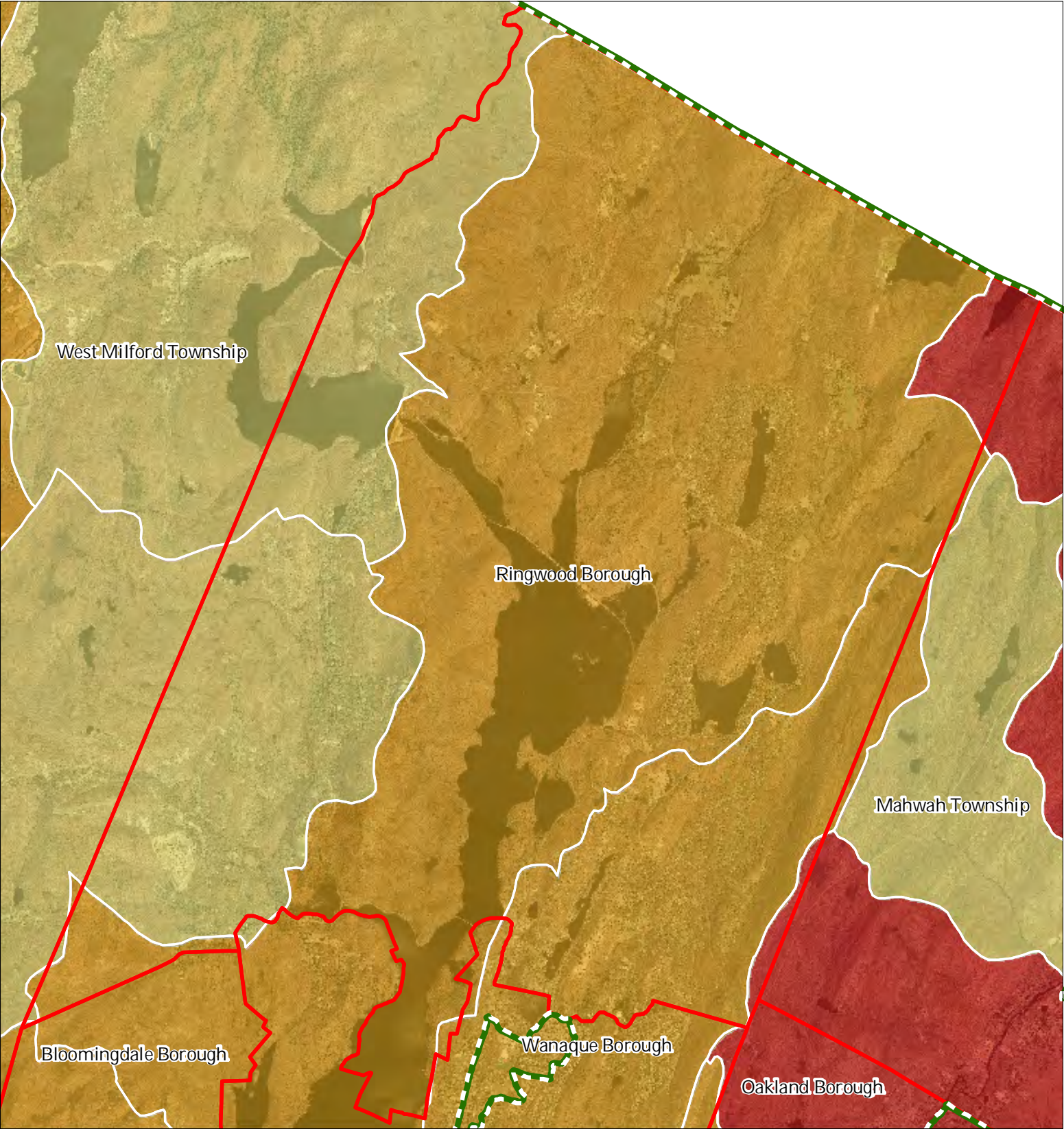
Ringwood Borough



1 inch = 0.912 miles

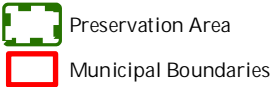
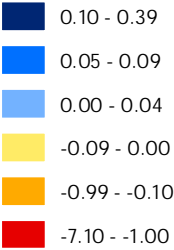


Exhibit R: Net Water Availability

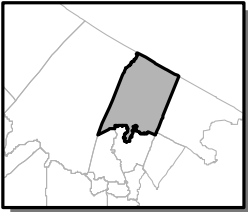
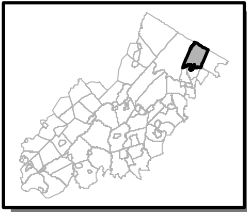


Net Water Availability By HUC14

Million Gallons Per Day (MGD)



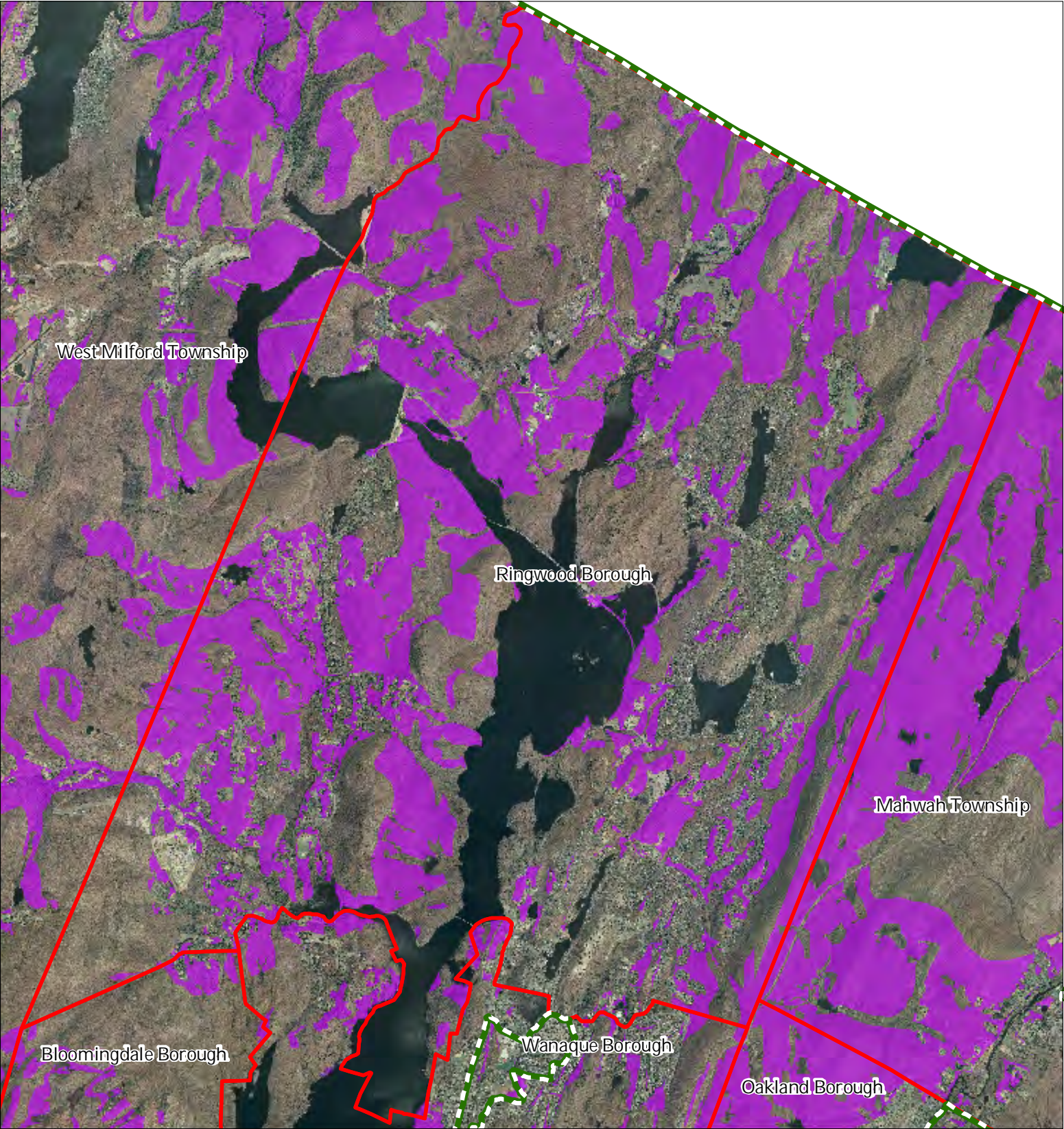
Ringwood Borough






1 inch = 0.91 miles

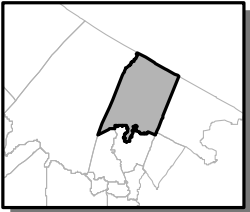
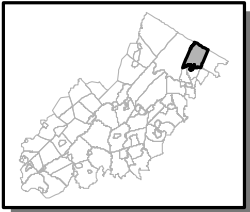


Exhibit S: Prime Ground Water Recharge Areas



-  Prime Ground Water Recharge Areas
-  Preservation Area
-  Municipal Boundaries

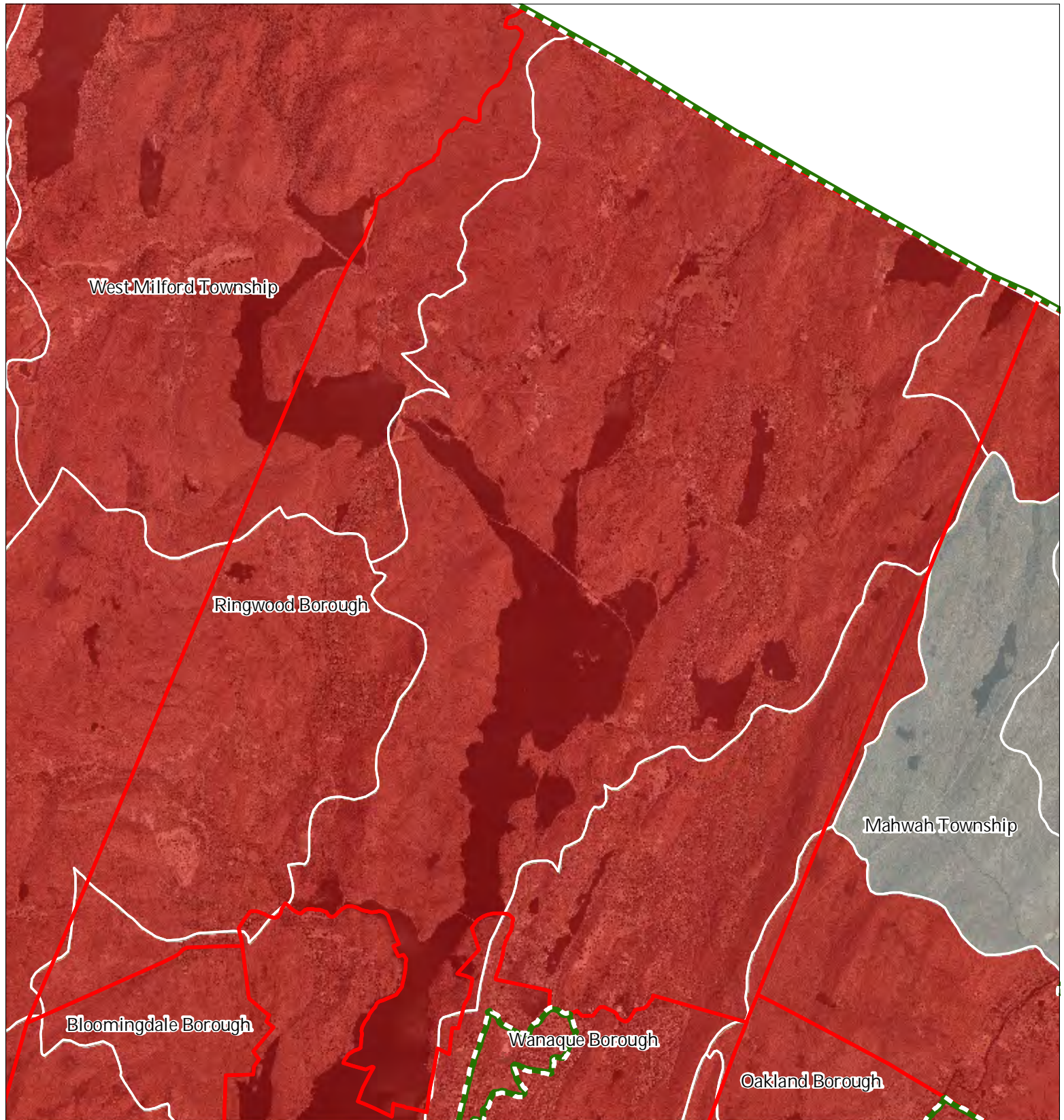
Ringwood Borough



1 inch = 0.912 miles



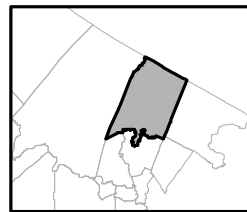
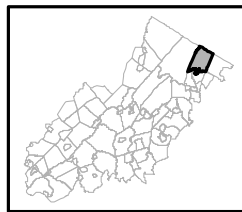
Exhibit T: HUC 14s on NJDEP Impaired Waters List



Impaired Waters Overall Assessment by HUC14 Subwatershed

- Non Impacted
- Insufficient Data Available
- Moderate
- Water Quality Impaired
- Preservation Area
- Municipal Boundaries

Ringwood Borough

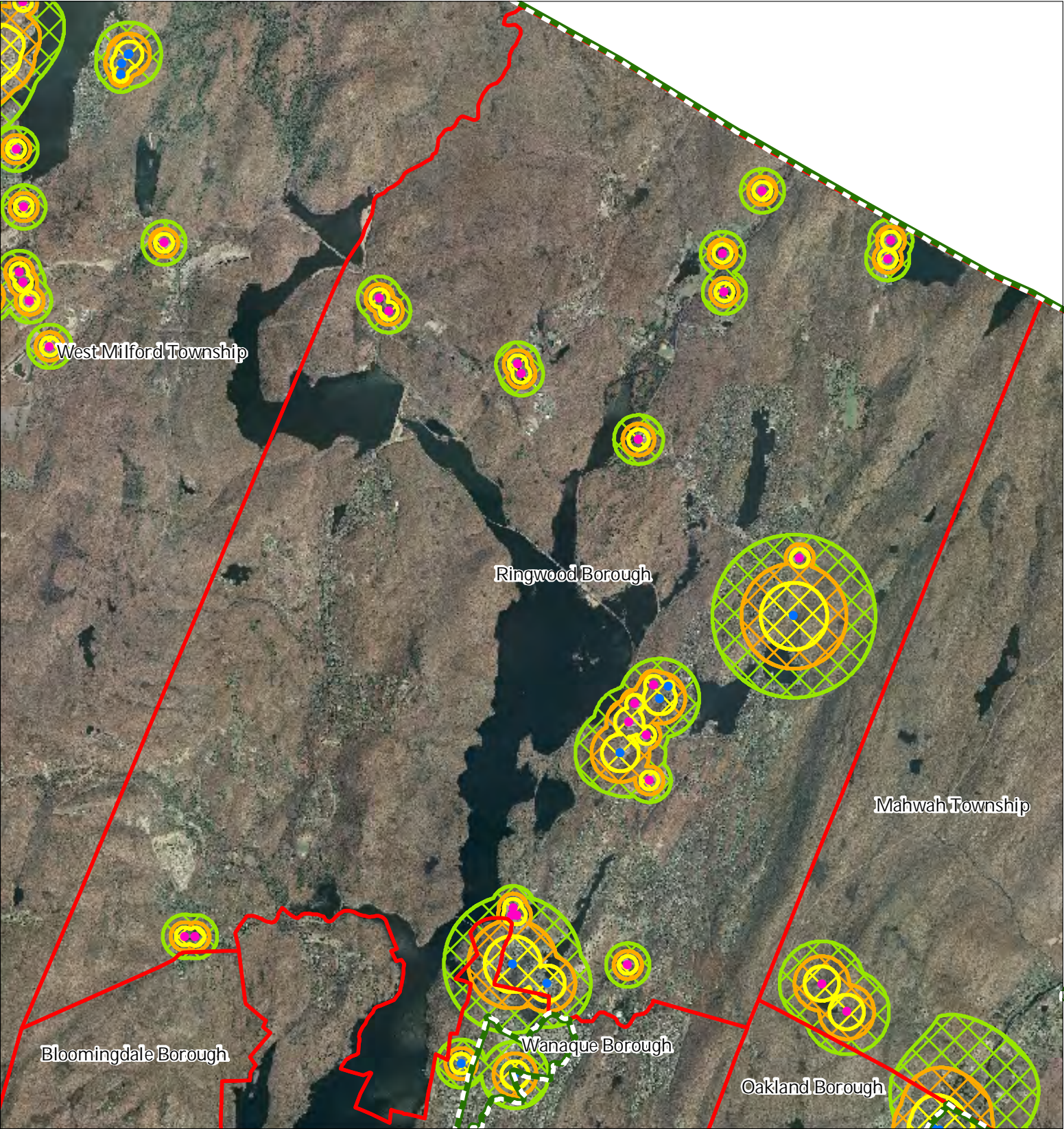


1 inch = 0.91 miles

Highlands Council
New Jersey



Exhibit U: Wellhead Protection Areas



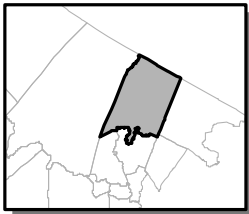
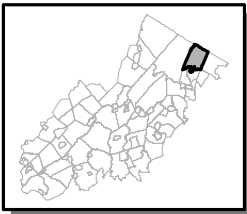
- Public Community Wells
- Public Non-Community Wells

Wellhead Protection Areas

- 2-Year Tier
- 5-Year Tier
- 12-Year Tier

- Preservation Area
- Municipal Boundaries

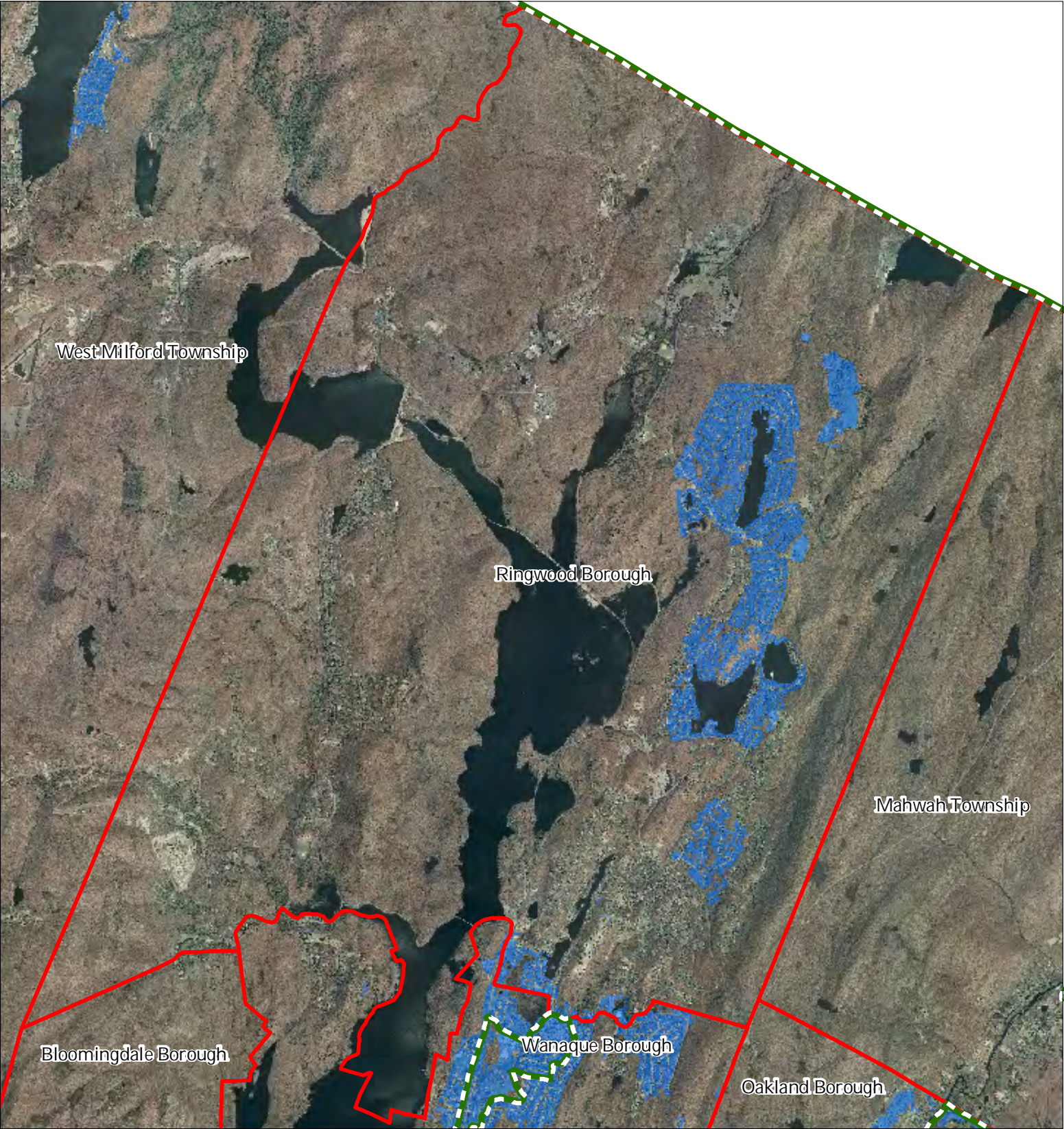
Ringwood Borough






1 inch = 0.91 miles

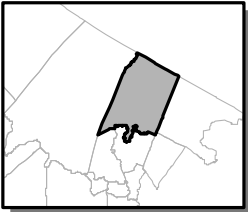
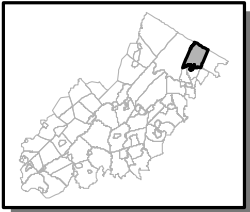


Exhibit V: Public Community Water Systems



-  Public Community Water Systems
-  Preservation Area
-  Municipal Boundaries

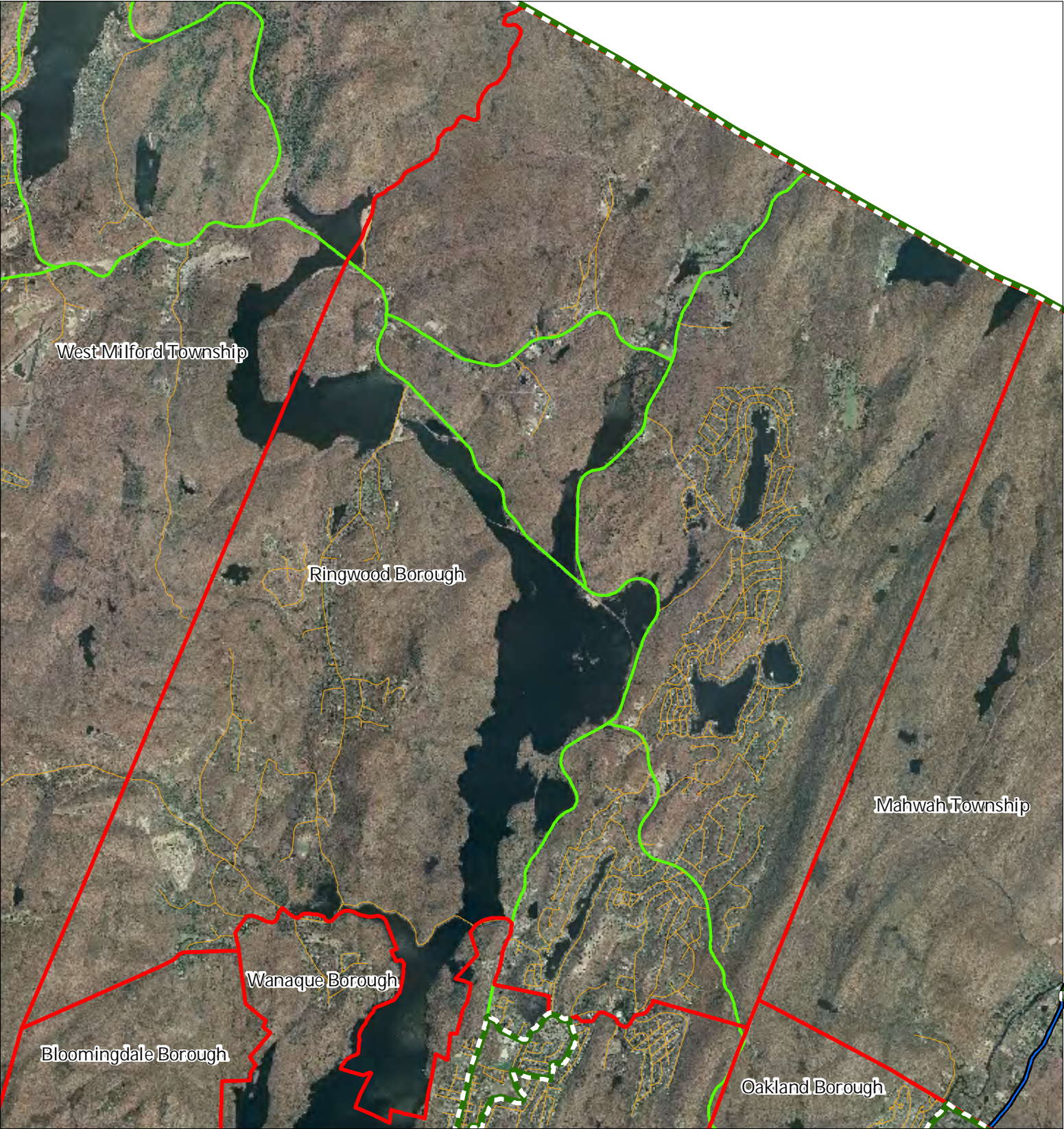
Ringwood Borough



1 inch = 0.91 miles



Exhibit Y: Highlands Roadway Network

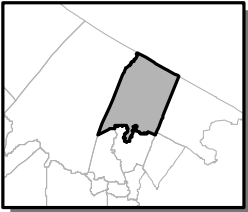
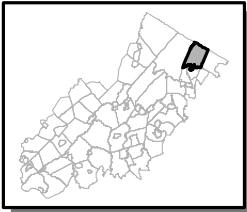


Roadway Network

- Interstate Highways*
- U.S. Routes*
- State Routes*
- County Routes*
- Local Routes*

- Preservation Area
- Municipal Boundaries

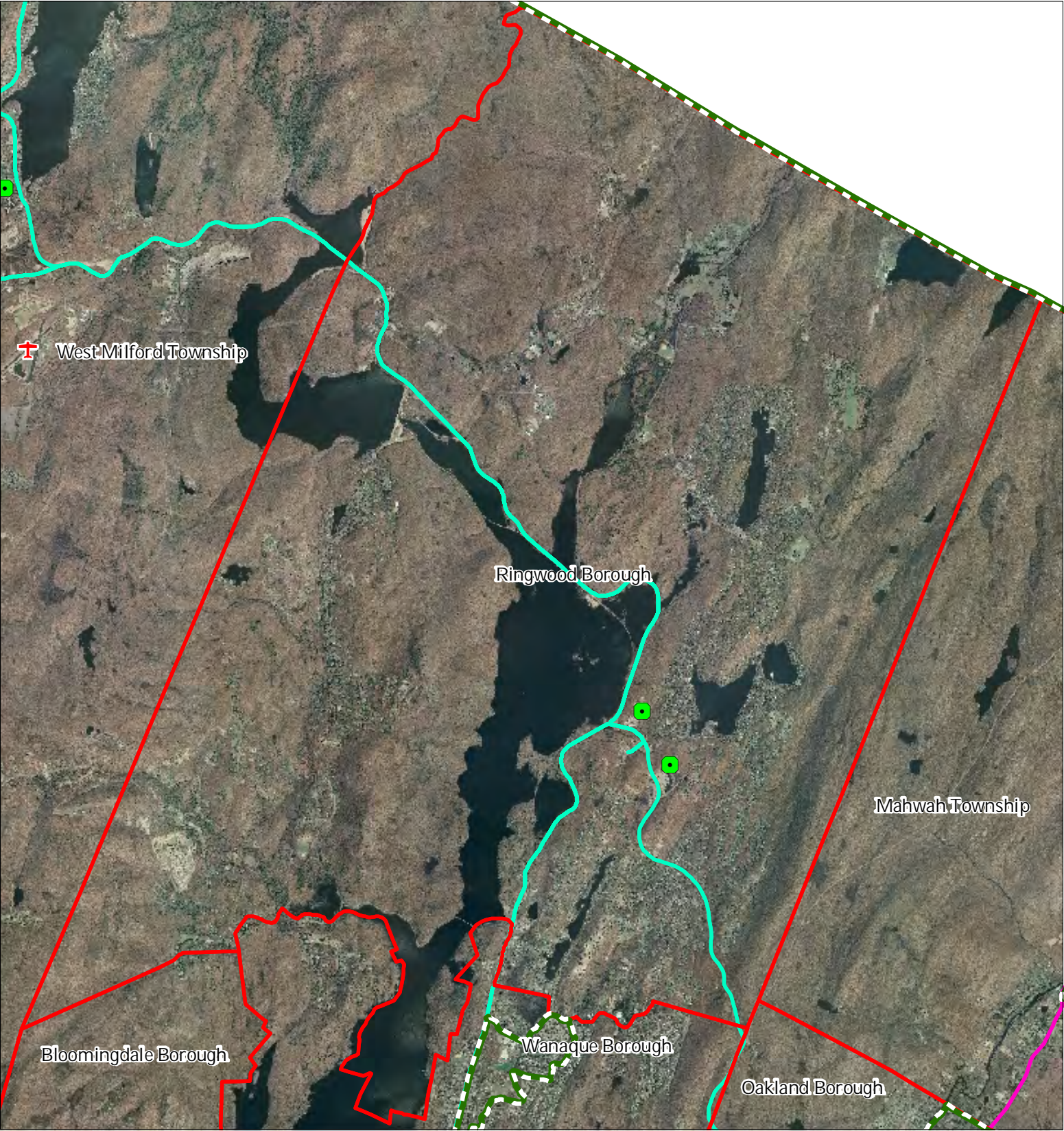
Ringwood Borough



1 inch = 0.91 miles



Exhibit Z: Highlands Transit Network



- Rail Network

 - *Boonton Line*
 - *Main Line & Bergen County Line*
 - *Morris and Essex Line*
 - *Raritan Valley Line*
- Freight Rail Lines

 - *Freight Rail Lines*
 - *Abandoned Freight Rail*
- Rail Stations

 -
- Park and Ride Sites

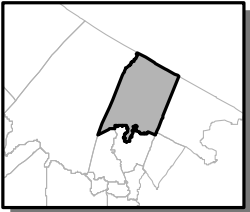
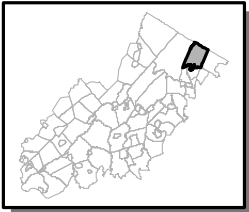
 -
- Private Bus Lines

 -
- NJ Transit Bus Lines

 -
- Airports

 - ✈

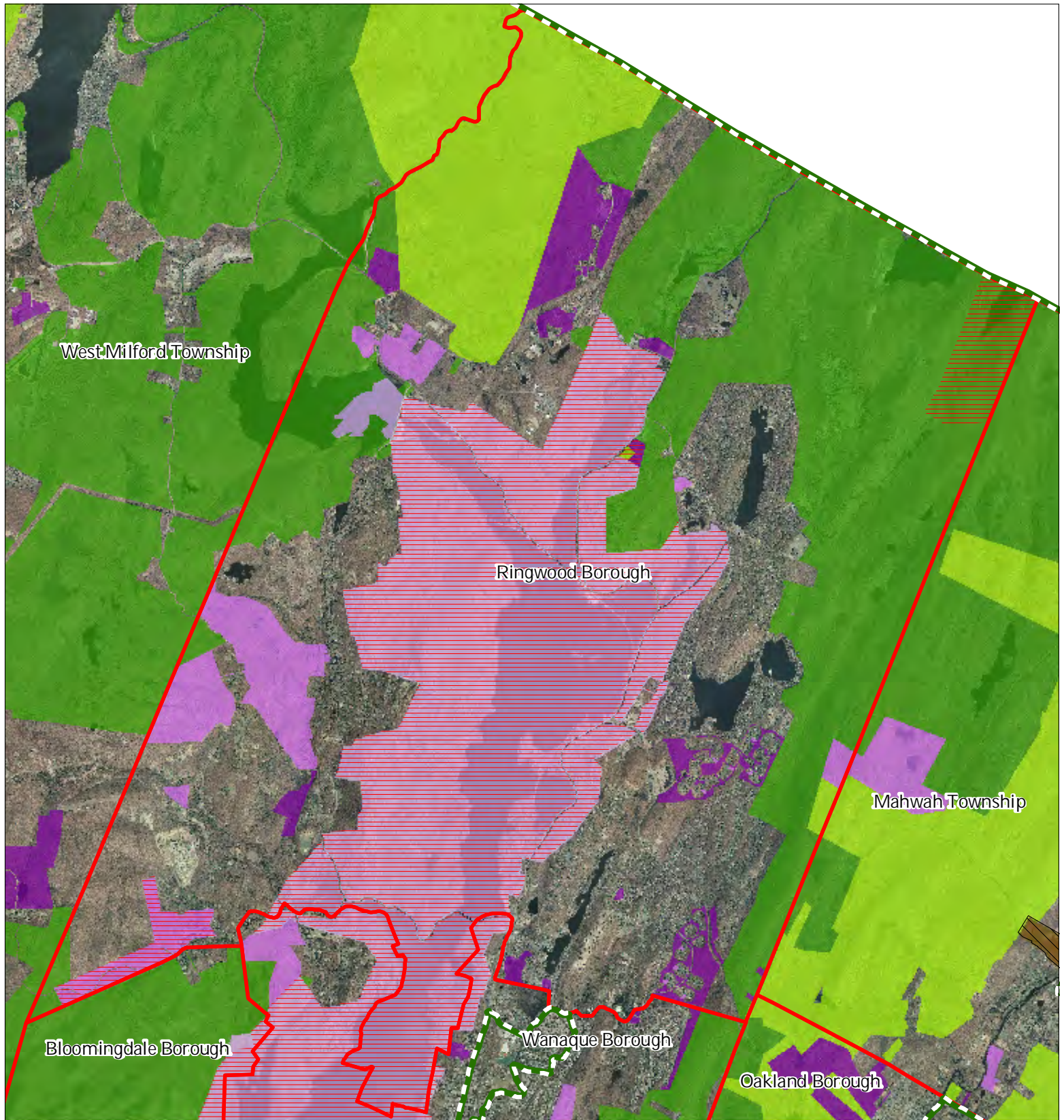
Ringwood Borough



1 inch = 0.91 miles



Exhibit AA: Preserved Lands



- Preserved Lands**
- Federal Open Space
 - State Open Space
 - County Open Space
 - Municipal Open Space
 - Non-Profit/Private Open Space
 - Water Supply Watershed Lands
 - Preserved Farmland
 - Highlands Transfer of Development Lands

Conservation Easements

Green Acres

SADC Easements

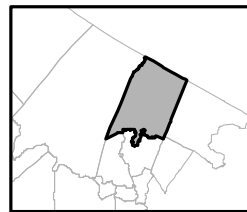
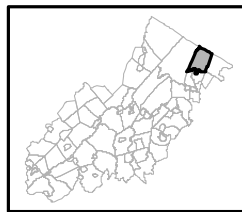
SADC Final

SADC Preserved

Municipal Boundaries

Preservation Area

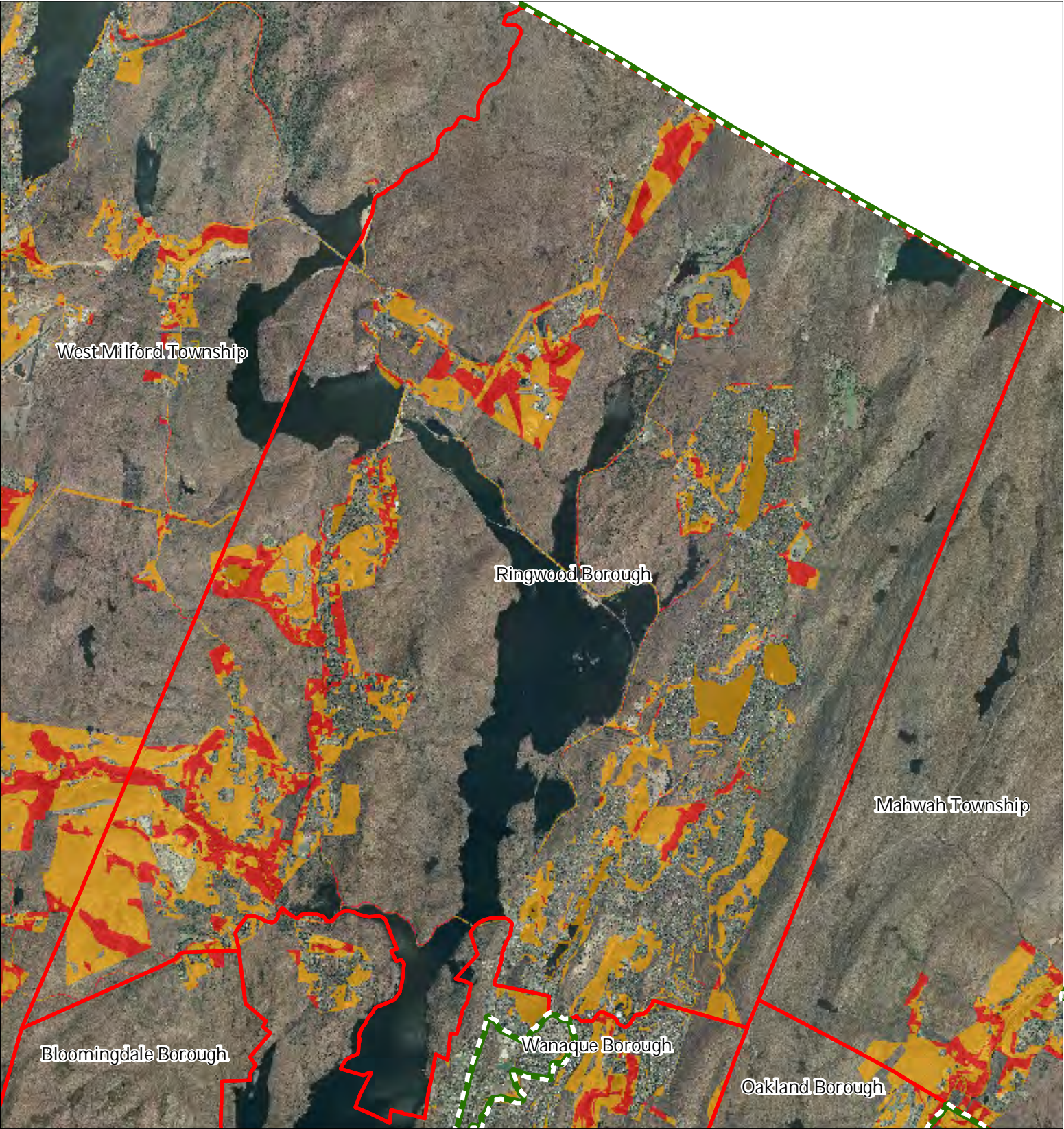
Ringwood Borough



1 inch = 0.91 miles



Exhibit BB: Highlands Conservation Priority Areas



Conservation Priority Area

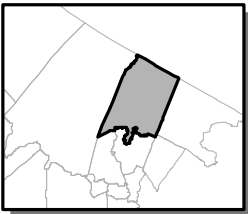
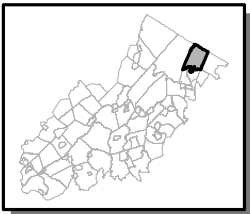
Moderate

High

Preservation Area

Municipal Boundaries

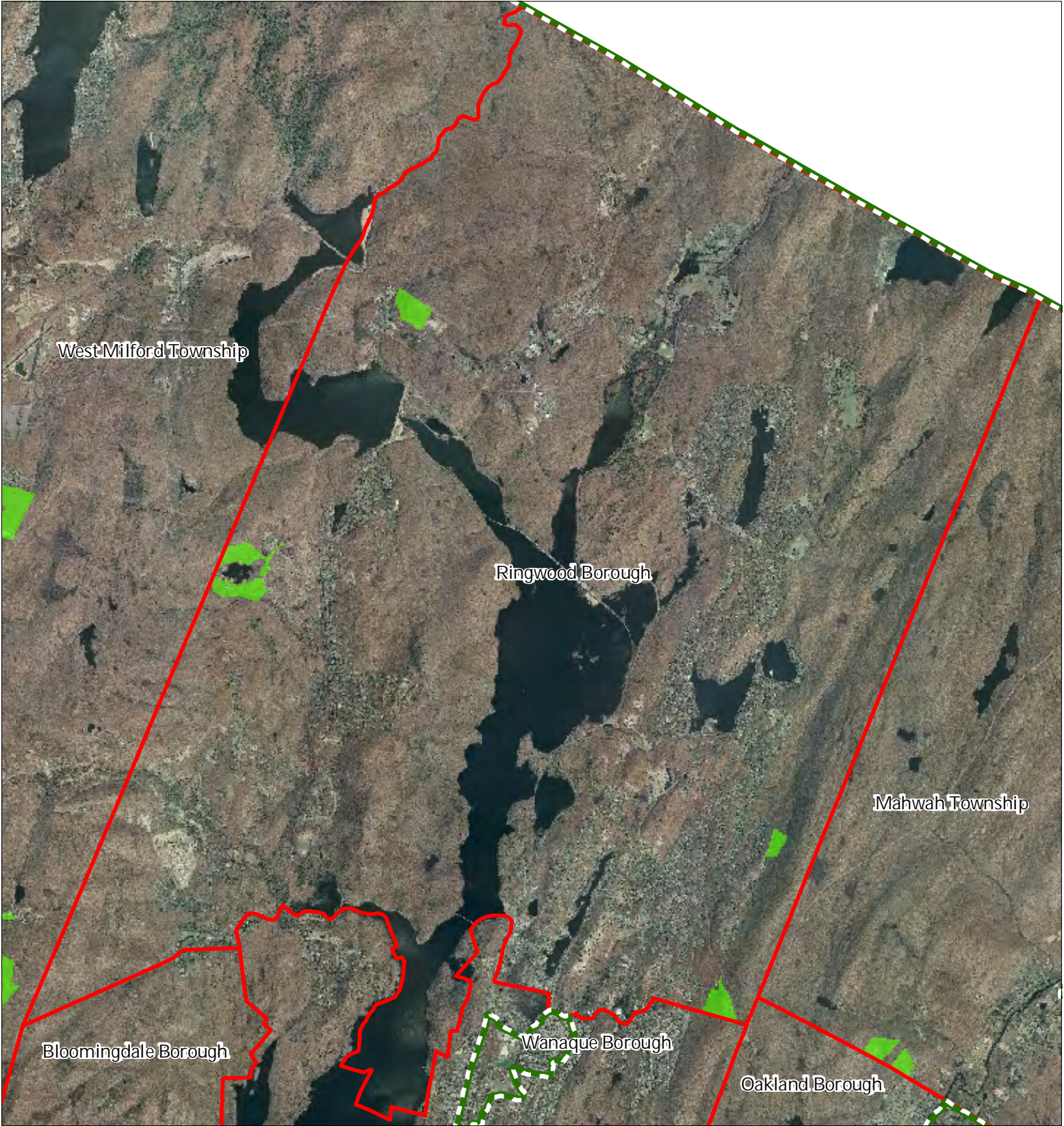
Ringwood Borough






1 inch = 0.912 miles

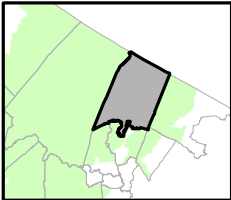
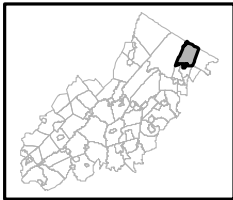


Exhibit CC: Highlands Special Environmental Zone



-  Special Environmental Zones
-  Preservation Area
-  Municipal Boundaries

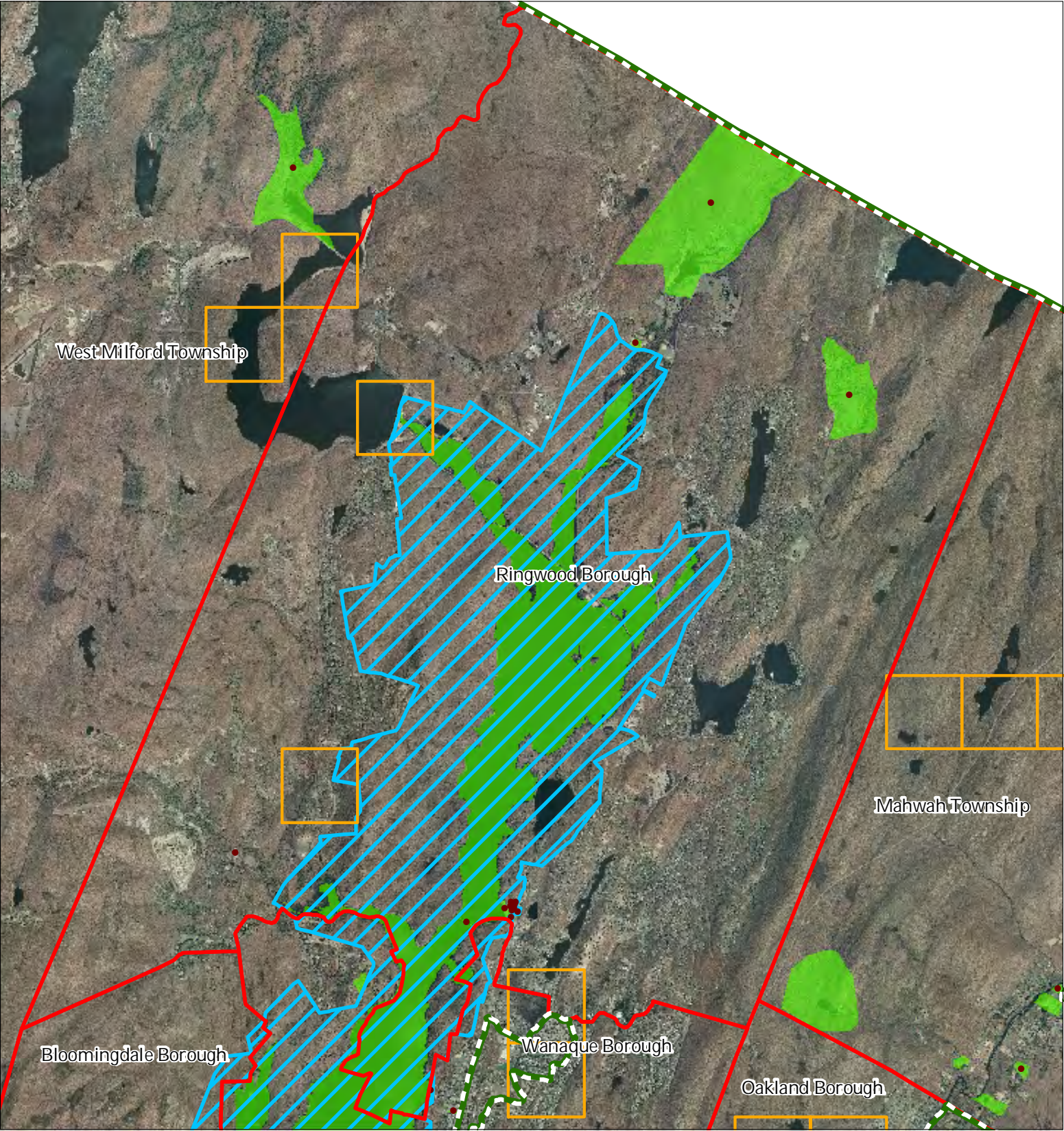
Ringwood Borough



1 inch = 0.909 miles

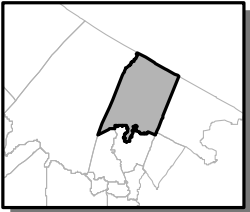
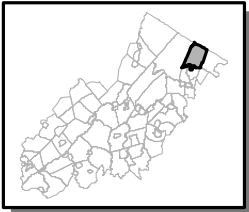


Exhibit HH: Historic, Cultural, and Archaeological Resource Inventory



-  Preservation Area
-  Municipal Boundaries
-  Archaeological Grids (1 sq mi)
-  NJ Historic Districts
-  Historic Property Points
-  Historic Property Polygons

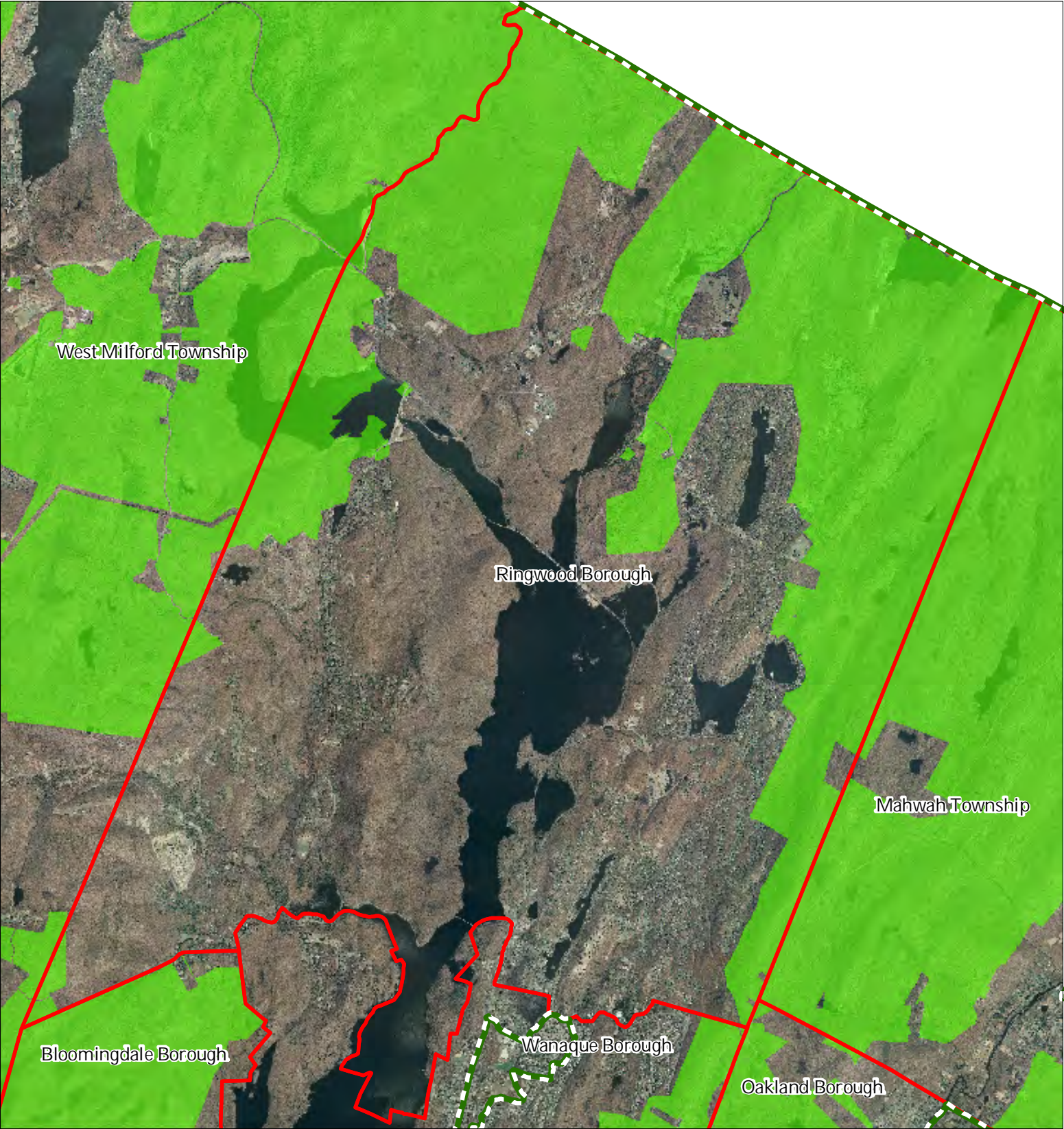
Ringwood Borough






1 inch = 0.912 miles

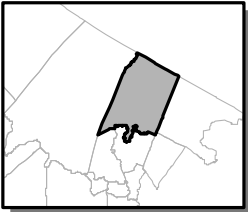
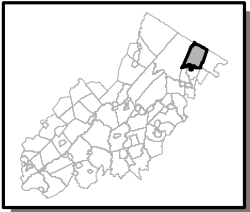


Exhibit II: Baseline Scenic Resources Inventory



-  Scenic Resources
-  Municipal Boundaries
-  Preservation Area

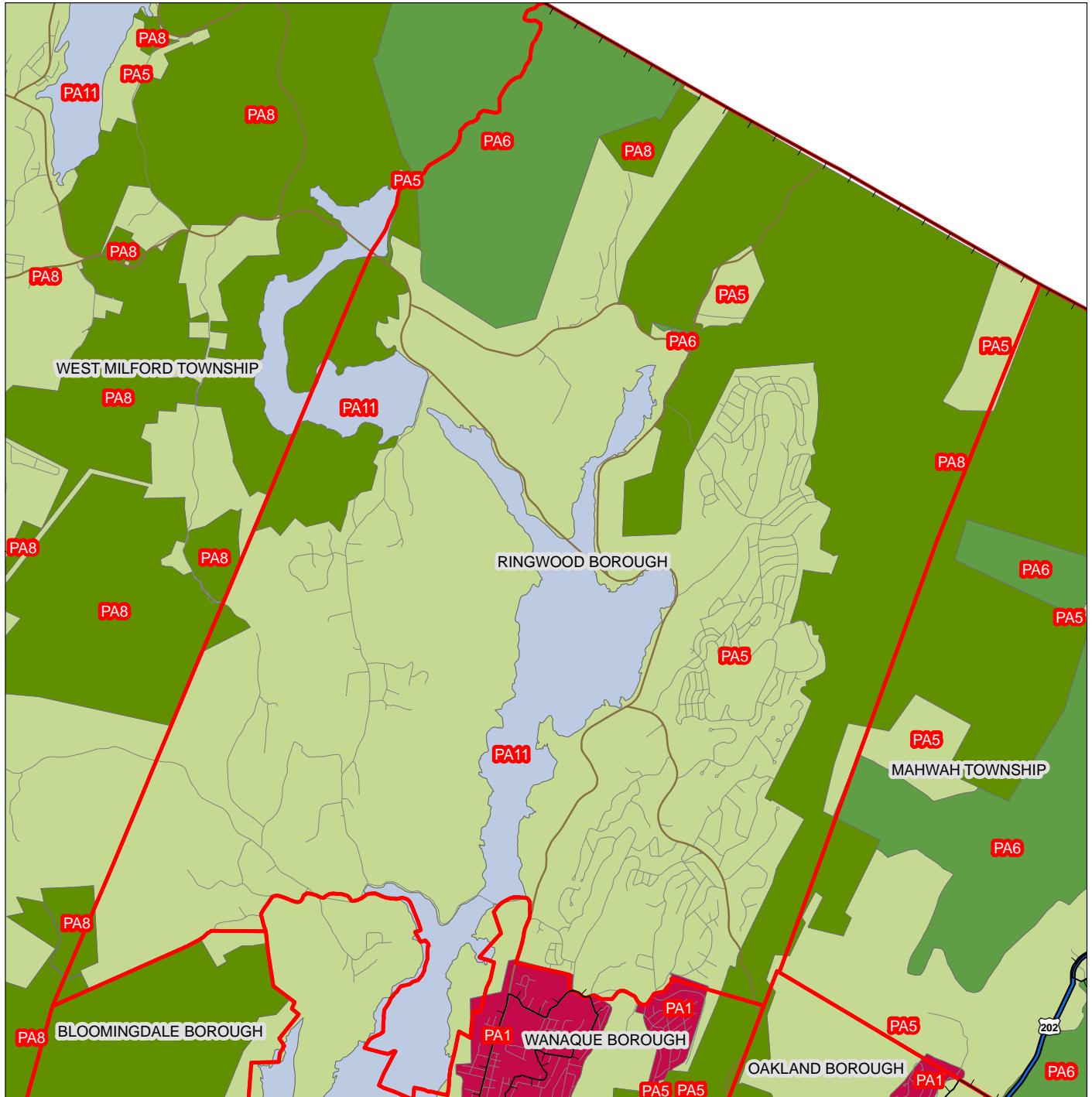
Ringwood Borough



1 inch = 0.91 miles



SDRP Planning Areas



Legend

- Preservation Area
- Municipal Boundaries
- Interstate Highways
- U.S. Routes
- State Routes
- County Routes
- Designated Centers*

State Planning Areas*

- METROPOLITAN (PA1)
- SUBURBAN (PA2)
- FRINGE (PA3)
- RURAL (PA4)
- RURAL ENVIRONMENTALLY SENSITIVE (PA42)

- ENVIRONMENTALLY SENSITIVE (PA5)
- PARK (PA6)
- FEDERAL PARK (PA7)
- STATE PARK (PA8)
- WATER (PA11)
- MILITARY (PA12)



* All designated centers expired on 1/7/2008 except Byram (expires 5/19/2010), Stanhope (expires 10/16/2008), and Sparta and Vernon (expire 7/16/2009). Center designation may be redesignated by the State Planning Commission and the Highlands Council. State Planning Areas are from the State Development and Redevelopment Plan.

