



## **Water Use and Conservation Management Plan**

For Pilot Area 10:

**HUC14 02030105060030 Raritan River NB  
(incl McVickers to India Brook)**

Pilot Area includes all or portion of the following  
municipalities: Chester Township, Mendham Borough,  
Mendham Township (Morris County)

Prepared by the State of New Jersey Highlands Water Protection and Planning Council as part of the Highlands Water Use and Conservation Management Plan (WUCMP) Pilot Program. This WUCMP was developed through the provisions of a State of New Jersey Highlands Water Protection and Planning Council Grant and may assist in the development of municipal WUCMPs in support of Highlands Regional Master Plan Conformance.

January  
2016

Water Use and Conservation Management Plan for  
HUC14 02030105060030

# **WATER USE AND CONSERVATION MANAGEMENT PLAN**

for  
HIGHLANDS REGIONAL MASTER PLAN CONFORMANCE

**HUC14 02030105060030  
RARITAN RIVER NB  
(INCL MCVICKERS TO INDIA BROOK)**

# Table of Contents

<b>Table of Contents .....</b>	<b>ii</b>
<b>Executive Summary .....</b>	<b>E-1</b>
<b>Introduction .....</b>	<b>E-1</b>
<b>Summary .....</b>	<b>E-2</b>
Net Water Availability.....	E-2
Water Conservation and Deficit Reduction and Elimination Strategies .....	E-3
Monitoring and Implementation Plans .....	E-3
<b>Introduction.....</b>	<b>1</b>
Purpose and Scope.....	1
Water Use and Conservation Management Plan (WUCMP).....	1
Goals and Policy Overview.....	1
Implementation Strategy .....	2
Scope and Applicability .....	3
<b>WUCMP Area Characteristics .....</b>	<b>4</b>
Background.....	4
Land Use Capability/Land Cover.....	4
Land Use/Zoning.....	4
Major Hydrologic Features .....	5
Geology and Soil Properties .....	5
<b>Identification of Water Sources and Uses .....</b>	<b>6</b>
Water System Profile .....	6
Description.....	6
Facilities .....	6
Service Areas .....	6
Allocation and Firm Capacity.....	6
Remaining Capacity.....	7
Wastewater Management .....	7
Description.....	7
Facilities .....	7
<b>Stakeholders.....</b>	<b>8</b>
<b>Analysis of Net Water Availability.....</b>	<b>9</b>
Introduction .....	9
Low Flow Margin .....	9
Ground Water Availability .....	9
Net Water Availability .....	10
Calculation of Net Water Availability.....	10
Water Supply .....	11
Municipal Consumptive/Depletive Uses.....	12
Revised Net Water Availability.....	13

**Water Use and Conservation Management Plan for  
HUC14 02030105060030**

Summary of Significant Causes of Deficit .....	15
<b>Water Conservation/Deficit Mitigation Strategies .....</b>	<b>16</b>
<b>Evaluation and Ranking of Water Conservation Strategies.....</b>	<b>18</b>
Evaluation.....	18
Ranking of Deficit Mitigation Strategies.....	26
<b>Funding Opportunities.....</b>	<b>29</b>
Public Funding Sources.....	29
Highlands Council Planning Grants .....	29
State Program Grants .....	29
Federal Program Grants .....	29
Private Funding Sources.....	30
Development.....	30
Commercial Entities.....	30
Foundations.....	30
Other Non-Governmental Organizations .....	31
Municipalities and Utilities.....	31
Municipal Capital Projects .....	31
Utility Operations .....	31
<b>Water Conservation, Deficit Reduction and Elimination Strategies .....</b>	<b>32</b>
Selected Strategies .....	32
Water Bill Structure/Comparison.....	32
Irrigation System Design .....	32
Stormwater Ordinance.....	32
Leak Detection and Repair.....	32
Rate Structure.....	33
Water Conservation and Deficit Reduction Target.....	33
Water Conservation and Deficit Reduction Estimates.....	33
Water Bill/Structure Comparison.....	33
Irrigation System Design .....	33
Stormwater Ordinance.....	34
Leak Detection and Repair.....	35
Rate Structure.....	35
Summary of Savings Potential.....	36
<b>Monitoring and Annual Water Use and Return Data .....</b>	<b>37</b>
Annual Water Use and Return Data.....	37
Stakeholder Participation and Ongoing Monitoring.....	38
<b>Implementation Plan.....</b>	<b>39</b>
Annual Program Implementation Plan .....	39
Strategies.....	39
Water Bill Structure/Comparison.....	39
Irrigation System Design .....	39



**Water Use and Conservation Management Plan for  
HUC14 02030105060030**

Stormwater Ordinance.....	39
Leak Detection and Repair.....	40
Rate Structure.....	40
Schedule to Achieve Water Balance .....	40
Responsible Parties .....	40
Funding Commitments .....	40
Next Steps .....	40
<b>Appendix A .....</b>	<b>A-1</b>
Background .....	A-1
Basis for Net Water Availability.....	A-1
Year.....	A-1
Ground Water Availability .....	A-1
Consumptive/Depletive Uses .....	A-2
Total Non-Ag Consumptive Use .....	A-2
Imported Septic Return .....	A-3
Net Water Availability.....	A-3
Surplus for Potential Use .....	A-3
<b>Appendix B .....</b>	<b>B-1</b>

# Executive Summary

## Introduction

There are 183 subwatersheds within the Highlands region. One of the highest priority objectives described in the Regional Master Plan (RMP) is to protect restore and enhance water resources within the Highlands region. To help achieve this objective, the Highlands Council has developed model Water Use and Conservation Management Plans (WUCMPs) for pilot areas throughout the Highlands region.

The development of WUCMPs specific to HUC14 subwatersheds is intended to address the requirements of this objective in a practical way that is applicable to each study area. The pilot areas were chosen to include a wide range of use types and water availability, and are geographically dispersed throughout the Highlands region. Pilot areas range in size and include between one and three subwatersheds. While the pilot areas were not developed based on municipal boundaries, the WUCMPs are intended to be used as Planning Tools to help municipalities develop their own plans.

Each WUCMP includes the following components:

- **WUCMP Area Characteristics** – Summarizes high level information such as land use capability/land cover, land use/zoning, major hydrologic features, geology, and soil characteristics.
- **Identification of Water Sources and Types** – The Highlands region uses both groundwater and surface water for potable water supply. Additional use types include, but are not limited to agricultural, commercial, industrial, and institutional.
- **Stakeholders** – a listing of stakeholders who can assist in the implementation of the WUCMP.
- **Revaluation of Net Water Availability** - Original calculations of Net Water Availability (NWA) were based on maximum water use in 2003 using a region-wide analysis at the HUC14 scale. This analysis has been expanded to include available data from 2000-2009 and has several refinements to the NWA computations. Since NWA is calculated on a HUC14 subwatershed basis, municipalities can calculate NWA for each subwatershed using the approach outlined within these WUCMPs.
- **Deficit Mitigation Strategies** – Strategies are provided on both supply-side conservation measures (e.g., leak detection, water auditing, well network optimization) and demand-side conservation measures (such as high efficiency irrigation techniques, rainwater harvesting, and low-flow plumbing fixtures), review of reuse potential, and storage alternatives have been identified. While each WUCMP includes a comprehensive list of deficit mitigation strategies, it is understood the application of individual strategies will vary amongst municipalities. In addition, municipalities may have additional strategies that are not included. Deficit mitigation strategies have been ranked within these WUCMPs but the rankings are subject to change, based on municipal preference.

## Water Use and Conservation Management Plan for HUC14 02030105060030

- **Funding opportunities** –Funding opportunities are listed that may be available to fund the mitigation actions.
- **Monitoring Plan** – Each WUCMP will include a description of ongoing monitoring of water use and validation of the performance of mitigation actions.
- **Deficit Mitigation Implementation Plan** – Each planning tool identifies deficit reduction targets, responsible parties, a schedule for action and implementation, and funding mechanisms.

While only a portion of a municipality may be included in certain study areas, that particular municipality can utilize these Planning Tools to help characterize a portion of the water use and conservation management requirements within their municipality.

Municipal based WUCMPs should reflect all HUC14 subwatersheds within the municipality. However, the implementation for municipal based WUCMPs will only include the portions of the HUC14 subwatersheds that lie within the boundary of the municipality. Municipalities can and should use information included in these Planning Tools where subwatersheds intersect their WUCMP planning boundary.

The WUCMP Planning Tools outline a straightforward approach and provide a solid framework that can be directly modified by municipalities to develop specific municipal based WUCMPs.

## Summary

This Planning Tool covers the following HUC14 subwatershed:

- 02030105060030 – named (Raritan R NB (incl McVickers to India Bk)

This subwatersheds is within Chester Township, Mendham Township, and Mendham Borough in Morris County, and Bernardsville Borough in Somerset County.

Major water services included in planning area include:

- NJ American Water Company (Short Hills) / Facility # 62
- United Water NACO, LLC

## Net Water Availability

The analysis of net water availability (NWA) for this planning area indicates the following variation in NWA between 2000 and 2009.

**Summary of Variation in Net Water Availability - 2000 - 2009**

HUC14	Minimum	Maximum
02030105060030 (Raritan R NB (incl McVickers to India Bk)	0.1155	0.1155

## **Water Conservation and Deficit Reduction and Elimination Strategies**

The following preliminary strategies have been identified for this planning area. These strategies are not prescriptive. All municipalities are able to select alternative strategies that best suit the needs and goals of their specific WUCMP.

- Water Bill Structure/Comparison – highlight historical use patterns for residential customers
- Irrigation System Design – promotion of intelligent irrigation system design
- Leak Detection and Repair – implement programs to identify water system leaks and eliminate them.
- Rate Structure – develop water utility rate structures that promote water conservation.
- Golf Course Water Use – work with golf courses to promote water conservation efforts
- Stormwater Ordinance – promote recharge and or infiltration within the subwatershed.

## **Monitoring and Implementation Plans**

The mitigation strategies selected to reduce the deficit in the subwatersheds must be evaluated periodically. An annual review of each strategy will be conducted to determine its effectiveness, and a more detailed biennial review will update the Net Water Availability tables of this WUCMP.

It is important that annual determinations/analysis/monitoring be conducted to verify the effectiveness of the implementation plan.

# Introduction

## Purpose and Scope

The Highlands Regional Master Plan (RMP) requires that conforming municipalities develop a “Water Use and Conservation Management Plan” that reflects the policies and objectives of the RMP. Specifically, conforming municipalities are required to develop Water Use and Conservation Management Plans “that will set priorities for the use of available water (where net water availability is positive) and will establish methods to reduce and, where feasible, eliminate deficits where they exist”.<sup>1</sup>

Implementation of the RMP will require extensive cooperation among all municipal governing bodies and major water users in the region. Conformance with the RMP is intended to align municipal and county plans, regulations and programs with the goals, policies, and objectives of the RMP, including preservation of the availability and quality of surface water and ground water resources throughout the Highlands region.

One of the highest priority objectives described in the RMP is to restore and protect water resources within the Highlands Region. The development of Water Use and Conservation Management Plans specific to HUC14<sup>2</sup> subwatersheds is intended to address the requirements of this objective in a practical way that is applicable to each subwatershed.

The RMP provides a method for determining how much water is routinely available for human use, as differentiated from water available for maintenance of ecosystem integrity and for maintenance of minimum levels in reservoirs and other surface water. The method determines Net Water Availability for each HUC14 subwatershed.<sup>3</sup> Where Net Water Availability is positive, future human use of water supply is supported. Where Net Water Availability is negative, action is needed to address the deficit.

This document serves as a Planning Tool for municipalities to ultimately develop Water Use and Conservation Management Plans specific for that particular municipality. Although HUC14s included within this document do not encompass an entire municipality, municipalities can use the Plan developed for these subwatersheds as examples and guidelines for developing full scale municipal plans.

## Water Use and Conservation Management Plan (WUCMP)

### Goals and Policy Overview

Net Water Availability is total available groundwater minus consumptive and depletive water uses. Net Water Availability varies greatly from one area within the Highlands Region to another. Some areas have a water surplus (positive Net Water Availability). Other areas are in significant deficit (negative

---

<sup>1</sup> Highlands Regional Master Plan, (Highlands Council, 2008), p. 159.

<sup>2</sup> Referring to the Hydrologic Unit Code (HUC) system established by the United States Geological Survey.

<sup>3</sup> Highlands Regional Master Plan, (Highlands Council, 2008), p. 160, Policy 2B2.

## Water Use and Conservation Management Plan for HUC14 02030105060030

Net Water Availability). To reduce or eliminate the water deficits within the Region, Water Use and Conservation Management Plans are required under RMP Objective 2B8c:

*Water Use and Conservation Management Plans shall be required through municipal Plan Conformance for all subwatersheds to meet the policies and objectives of Goal 2B, to ensure efficient use of water through water conservation and Low Impact Development Best Management Practices, and to avoid the creation of new deficits in Net Water Availability. Where developed for Current Deficit Areas, the plans shall include provisions to reduce or manage consumptive and depletive uses of ground and surface waters as necessary to reduce or eliminate deficits in Net Water Availability, or to ensure continued stream flows to downstream Current Deficit Areas from Existing Constrained Areas, to the maximum extent practicable within each HUC14 subwatershed. Water Use and Conservation Management Plans shall demonstrate through a detailed implementation plan and schedule how and when the current deficit will be resolved in a subwatershed prior to approval for new water uses in the subwatersheds with the most severe deficits (e.g., in excess of 0.25 million gallons per day or mgd), and the plan shall be implemented prior to initiation of new water uses.*

### Implementation Strategy

Implementation of the goals, policies and objectives of the RMP regarding water deficit restoration consists of the following components, which will be incorporated into each WUCMP by subwatershed for the Highlands Region (from Highlands Council, 2008):

- Identify HUC14 subwatersheds that have a deficit of water availability or a surplus of water availability
- Verify the net water availability analysis and any associated deficits
- Develop a Water Use and Conservation Management Plan for conforming municipalities, especially those whose water supply is in a deficit subwatershed
- For complex systems or where the development of deficit reduction plans for multiple subwatersheds is more appropriate, collaborate with NJDEP and affected interests to develop Water Use and Conservation Management Plans at a larger scale
- Coordinate with NJDEP so that the water allocation permit process, including transfers of water between subwatersheds where required, supports the reduction and elimination of water deficits

This WUCMP includes the following components:

- **Identification of water sources and uses** – The Highlands Region uses both groundwater and surface water for potable water supply. Additional uses include irrigation (including agricultural), commercial, industrial and institutional.
- **Expanded evaluation of Net Water Availability** (expanded from the original analysis in the RMP) – Original calculations of Net Water Availability were based on maximum water use in 2003. This analysis has been expanded to include available data from 2000-2009.

## Water Use and Conservation Management Plan for HUC14 02030105060030

- **Deficit mitigation strategies** – This section includes water conservation measures (such as high efficiency irrigation techniques, rainwater harvesting, and low-flow plumbing fixtures), review of reuse potential, and storage alternatives.
- **Funding opportunities** – Approaches that may be available to fund the mitigation actions specified within this plan.
- **Monitoring plan** – Ongoing monitoring of water use and validation of the performance of mitigation actions.
- **Deficit reduction and elimination strategy and implementation plan**– Identify deficit reduction targets, responsible parties, a schedule for action and implementation, and funding mechanisms.

### Scope and Applicability

This WUCMP covers 7.7 square miles within the Highlands Region and includes Chester Township, Mendham Township, and Mendham Borough in Morris County, and Bernardsville Borough in Somerset County (Figure 1). The area included in this WUCMP consists of one subwatershed designated by Hydrologic Unit Code (HUC14) as follows:

- 02030105060030 – named (Raritan R NB (incl McVickers to India Bk)

As mentioned above, the WUCMP presented within this document serves as a Planning Tool for each municipality. Implementation strategies presented herein are offered as examples, and may not be suitable for each particular municipality. Participants are encouraged to review various implementation strategies (whether listed in this WUCMP or not) and identify those that represent the best opportunity to achieve their planning goals.

Municipal plans including parts of this study area will include numerous HUC14 subwatersheds beyond the one included in this document. For example, five HUC14 subwatersheds intersect the boundaries of Mendham Borough. However, there are two subwatersheds that intersect the Borough boundary, but have no major water uses or returns within Mendham Borough. Therefore, only the anticipated water use associated with domestic supply for that portion of the Borough within those subwatersheds is required for inclusion into the municipal WUCMP. A full calculation of Net Water Availability for the remainder of these subwatersheds is not necessary.

However, in cases where significant water use occurs within a subwatershed, and is located both within and outside the Township boundary, a full analysis on that particular subwatershed would be required. Responsibility for implementing strategies within that subwatershed would be assigned to each contributing municipality based on a flow (or use)-weighted approach.



# WUCMP Area Characteristics

## Background

This WUCMP is in Chester Township, Mendham Township, and Mendham Borough in Morris County, and Bernardsville Borough in Somerset County.

## Land Use Capability/Land Cover

### *Land Use Capability Zones*

The Highlands Region is classified into three Land Use Capability Zones:

- **Protection Zone** – Areas having high value in terms of forested resources, critical habitat, water quality and quantity, and ecological function, and having limited or no capacity to support human development without adversely affecting the overall ecological function of the Highlands Region. This zone has one sub-zone, Wildlife Management.
- **Conservation Zone** - Areas that have significant environmental features that should be preserved and protected from non-agricultural development. This zone has one sub-zone, Conservation Environmentally-Constrained.
- **Existing Community Zone** - Areas characterized by extensive and intensive existing development that may have capacity to support additional human development without adversely affecting the ecological value of the Highlands Region. This zone has two sub-zones: Existing Community Environmentally-Constrained, and Lake Community.

Of the 7.7 square miles encompassed by this WUCMP, 64% of the land falls within the Protection Zone and 22% of the land falls within the Existing Community Zone, and 14% is within the Conservation Zone. Figure 2 shows the Land Use Capability Map for this WUCMP.

### *Preservation and Planning Areas*

Approximately 92% of the WUCMP is in the Highlands Planning Area and 8% is in the Highlands Preservation Area.

Figure 3 shows the delineation of the Preservation and Planning Areas in the vicinity of this WUCMP.

## Land Use/Zoning

The WUCMP area is low density residential, some higher density residential and commercial properties, and large tracts of forested land. Figure 4 depicts the layout of all land use within the subwatershed. Due to the small amount of urban development in this subwatershed, the area can be considered a rural residential area.

A number of public open spaces are located in this subwatershed. They include:

- Burnett Brook Preserve



## **Water Use and Conservation Management Plan for HUC14 02030105060030**

- Mt. Paul Memorial Park
- Ralston Recreation and Natural Area
- Schiff Nature Preserve

A residential/commercial center is evident in and around Mendham Borough. NJDEP 2007 Impervious surface data for this subwatershed is shown on Figure 5.

Figure 6 shows an aerial view of the subwatershed.

Roxiticus Golf Club is located in this subwatershed.

### **Major Hydrologic Features**

The HUC14 subwatershed addressed by this WUCMP includes small lakes. Pleasant Valley Lake and Cromwell Lake are the largest.

Burnett Brook is the tributary concentrating flow from the northern portion of this subwatershed. McVickers Brook is a tributary starting in the eastern section of this subwatershed and flowing to the south toward the Raritan River. The North Branch of the Raritan River flows from north to south, roughly dividing this subwatershed in half.

The USGS maintains multiple stream gauges and monitoring stations in the subwatershed. Figure 7 shows the location of USGS Stream Gage Sites in the vicinity of the subwatershed.

### **Geology and Soil Properties**

The subwatersheds in the WUCMP area are located within the Highlands Physiographic Province, characterized by a series of discontinuous rounded ridges separated by deep narrow valleys. The Highlands Physiographic Province consists of igneous and metamorphic formations, although sedimentary and meta-sedimentary rocks are also present. Overall, the bedrock in this area is mapped as primarily igneous and metamorphic rocks include granite, gneiss and schist.

Figure 8 displays the bedrock geology within the subwatershed. Igneous rock is formed through the cooling and solidification of magma or lava. Metamorphic rock is rock created by transformation of an existing rock type when subjected to heat and pressure. These rock types consist of dense rock as compared to sedimentary rock. As a result, recharge tends to be minimal and ground water supplies limited, as there is very limited pore space or fractures for water to enter. The water from this type of bedrock is generally fresh and moderately hard. Chemical treatment may be necessary to address hardness, iron and manganese.

# Identification of Water Sources and Uses

## Water System Profile

### Description

Two water systems serve the WUCMP area: New Jersey American Water Co. (Short Hills) and United Water. Homes and businesses outside the public water service areas are served by privately owned ground water wells.

### Facilities

Figure 9 indicates the public supply wells identified within the WUCMP area, only some of which are associated with the two township utilities.

### Service Areas

The service areas within the WUCMP area is:

- NJ American Water Company (Short Hills) / Facility # 62
- United Water NACO, LLC

These service areas are shown in Figure 9.

### Allocation and Firm Capacity

Table 2 lists the existing public groundwater wells in this WUCMP for which usage data has been identified.

Firm capacity is defined as the pumping and/or treatment capacity of the water system when the largest pumping unit or treatment unit is out of service. Subtracting the total peak daily demand from the firm capacity may result in a water supply deficit (when the total peak is greater than firm capacity) or a surplus.

Firm capacity and allocation are based on an entire water system, not individual wells. There may be wells outside of the particular HUC14 that are included within the water system, and thus the allocation and firm capacity numbers.

**Table 1 - Summary of Public Groundwater Wells in HUC14 02030105060030**

Water Purveyor	System	Well ID No.	Well Capacity (GPM)	Allocation (MGM)	Firm Capacity (MGD)
NJ American Water Co.	Chester/Mendham	Well 1	21	NS	NS
Sisters of Christian Charity	NS	Well 2	NS	NS	NS
		Well 3	NS	NS	NS

NS = Not Specified

## Remaining Capacity

The Remaining Capacity of water system in this subwatershed is unknown. Remaining Firm Capacity is not available for either community water system in this WUCMP, according to NJDEP data (accessed June 6, 2012).<sup>4</sup>

## Wastewater Management

### Description

One area within the subwatershed is served by centralized wastewater treatment as described below. The Sewer Service Area is shown in Figure 10.

The Mendham Borough Domestic Sewerage Facility (DSF) is located in this subwatershed, but its associated sewer service area is located predominantly outside the subwatershed.

The remaining areas in the WUCMP area are served by individual subsurface sewage disposal (septic systems).

### Facilities

Following are wastewater treatment facilities located in this subwatershed:

- Mendham Borough DSF (discharge to surface water)
- Mendham West Wastewater Treatment Plant (WWTP) (discharge to groundwater)

The location of the wastewater treatment facilities is shown on Figure 10.

---

<sup>4</sup> <http://www.state.nj.us/dep/watersupply/pws.html>

## **Stakeholders**

Potential Stakeholders within this subwatershed include the following:

- Municipal governments of Chester Township, Mendham Borough and Mendham Township
- NJ American Water Co.
- Residents of Chester Township, Mendham Borough and Mendham Township
- Mendham Borough DSF

While this subwatershed includes a small portion of Bernardsville Township, these sections of this subwatershed do not play a meaningful role in water use and so have not been listed as stakeholders in the section above.

# Analysis of Net Water Availability

## Introduction

Net Water Availability is Ground Water Availability minus consumptive and depletive water uses. Ground Water Availability is the portion of Ground Water Capacity that can be provided for human use without harm to other ground water users, aquatic ecosystems or downstream users. The Highlands RMP defines Ground Water Capacity based on the Low Flow Margin component of the Low Flow Margin of Safety Method. Low Flow Margin and Ground Water Availability are discussed below.

## Low Flow Margin

Low Flow Margin is the margin between two stream low flow statistics: September median flow and 7 day-10 year low flow (7Q10). Low Flow Margin is derived for each HUC14 subwatershed using data from streams in a relatively unaltered state. The 7Q10 is the lowest total flow over seven consecutive days during a ten year period. It has been used in quantifying passing flow requirements. The 7Q10 is also often used to define an extreme low flow condition for water quality based effluent limits applied to wastewater discharges. A critical flow regime for aquatic ecosystems is the lowest monthly flow, which in New Jersey and the Highlands tends to occur in September. The Low Flow Margin is the difference between 7Q10 and September median flow, which in the Highlands is always a positive sum.<sup>5</sup>

Low Flow Margin is used to calculate Ground Water Capacity, or the natural ability of the watershed to support base flow.<sup>5</sup> Ground Water Capacity is derived from Low Flow Margin, but is adjusted for the consumptive uses incorporated into the stream flow statistics used to derive Low Flow Margin. Ground Water Capacity equals Low Flow Margin multiplied by 1.02, based on a USGS study that showed existing consumptive uses are roughly 2 percent of Low Flow Margin.

## Ground Water Availability

Ground Water Availability is that portion of Ground Water Capacity that is available for human uses (absent other constraints).<sup>5</sup>

---

<sup>5</sup> Highlands Council Technical Report, Water Resources Volume II Water Use and Availability” (Highlands Council, 2008), p. 46.

## Water Use and Conservation Management Plan for HUC14 02030105060030

The following threshold values were established by the Highlands Council:

**Table 2 - Ground Water Availability Thresholds as Percentage of Ground Water Capacity<sup>6</sup>**

Land Use Capability Zone	Standard Threshold Capability
Protection Zone	5% LFM
Conservation Zone	5% LFM (non-agriculture) 10% LFM (agriculture)
Existing Community Zone	20% LFM

This subwatershed is predominantly within the Protection Zone, so according to the rules established in the Highlands RMP and Technical Report Vol. II, the Ground Water Capacity is multiplied by 5% to arrive at Ground Water Availability.

**Table 3 - Ground Water Availability**

HUC14 Description	Ground Water Availability (mgd)
HUC14 02030105060030, Raritan River NB(incl. McVickers to India Brook)	0.1155

## Net Water Availability

### Calculation of Net Water Availability

Net Water Availability (NWA) is Ground Water Availability minus any consumptive and depletive uses within the subwatershed. When NWA is positive, ground water supply is available for human uses. When NWA is negative, insufficient ground water available to support additional human use.

Consumptive water use is defined as water that is lost within the subwatersheds and is not returned as recharge or as discharge to a stream within the subwatersheds. An example of a consumptive use is irrigation, in which most of the water evaporates and does not recharge the aquifer system. Depletive water uses are those in which water is exported out of the subwatersheds. A typical example of depletive use is conveyance of wastewater out of the subwatersheds to a wastewater treatment plant that discharges in another subwatershed.

NWA was originally calculated using maximum water withdrawals from 2003, which represented the most recently available compiled and checked data for use in the RMP. The NWA values for the

---

<sup>6</sup> Highlands Council Technical Report, Water Resources Volume II Water Use and Availability”(Highlands Council, 2008), p. 121.

## Water Use and Conservation Management Plan for HUC14 02030105060030

subwatersheds in the Highlands Council Technical Report “Water Resources Volume II Water Use and Availability” (2008) for this subwatershed are presented below:

**Table 4 - Published Net Water Availability**

HUC14 Description	Net Water Availability (mgd)
02030105060030 (Raritan River NB (incl McVickers to India Brook)	-0.011

This total published NWA reflects a deficit of approximately 11,000 gallons per day.

As part of this analysis, updates to the NWA calculation were performed for this subwatershed to adjust for the following:

- Additional water use data for the period 2000-2002 and 2004-2009;
- Septic system return for those areas served by public water but not by public sewer.

Water uses within this subwatershed are domestic ground water and public community supply. There are surface water withdrawals associated with golf course irrigation reported within the subwatershed.

Public Community water supply use is listed in Table 5.

## Water Supply

### ***Public Community Supply***

Following is a summary of Public Community Supply wells. There is no reported pumpage for these wells.

**Table 5 - Water Supply Withdrawals**

Water Purveyor	Category	Withdrawals	
		Peak Month	Peak Withdrawal (MGM)
02030105060030 (Raritan R NB (incl McVickers to India Bk)			
NJ American Water Co.	Public Supply	NA	NA
Sisters of Christian Charity	Public Supply	NA	NA

MGM = million gallons per month; NA = Not Available

### ***Domestic Well Ground Water Usage***

Domestic Well Ground Water Usage is an estimate of private well withdrawals within the subwatersheds for areas not served by the public supply. It was calculated based on population

## Water Use and Conservation Management Plan for HUC14 02030105060030

estimates for the subwatersheds from the 2000 Census, multiplied by a factor of 100 gallons per person per day as identified by the Highlands Council.<sup>7</sup>

**Table 6 - Domestic Ground Water Usage**

HUC14	Domestic Ground Water Usage (mgd)
02030105060030	0.0916

### Municipal Consumptive/Depletive Uses

Groundwater models used in support of the Highlands Regional Net Water Availability analysis show that the impact on September stream flows of consumptive/depletive (C/D) ground water use during the summer is not 1:1, but roughly 1:0.9.<sup>8</sup> In other words, 1 gallon of C/D water use is calculated to reduce Ground Water Availability in September by 0.9 gallons. Therefore, ground water use (raw pumpage) during the summer month with the highest demand was multiplied by 0.9 to reflect this impact. The factor is not applied to surface water diversions, which are based on September withdrawals that have an immediate impact on stream flows.

Consumptive water uses such as irrigation are further adjusted using consumptive use coefficients. In many instances, the water is not conveyed a long distance through a water utility network. Therefore, it is assumed that the withdrawal, use and discharge occur in the same location. Consumptive use coefficients reflect the percentage of the consumptive use that is lost and is not returned to the aquifer.<sup>9</sup>

For public community water uses, the calculation of consumptive and depletive uses must consider the possible import/export of water, and the potential return of the water as a wastewater discharge. In these situations, consumptive/depletive use in the portion of the water supply service area that is coincident with a wastewater service area is associated with the wastewater discharge from that sewerage area. Any remainder of the consumptive use is allocated among the areas on public water service that discharge to individual septic systems. Water exported to a different subwatershed, such as a wastewater treatment plant, are considered depletive. Depletive uses, by their nature, have an effective consumptive use coefficient of 1.0.

---

<sup>7</sup> Highlands Council Technical Report, "Water Resources Volume II Water Use and Availability" (Highlands Council, 2008), p. 96.

<sup>8</sup> Highlands Council Technical Report, "Water Resources Volume II Water Use and Availability" (Highlands Council, 2008), p. 116.

<sup>9</sup> Highlands Council Technical Report, "Water Resources Volume II Water Use and Availability" (Highlands Council, 2008), p. 119.



## **Revised Net Water Availability**

As part of this analysis, revisions to the Net Water Availability calculation were conducted to include more recent public supply water use data.

Net Water Availability calculations were conducted for each of the years 2000-2009, incorporating additional water supply pumpage data from users in the subwatershed. Pumping during summer months is typically greatest and has the largest impact on September base flow, which is used in calculating Net Water Availability. Therefore, maximum aggregate monthly water usage from June, July or August was used to calculate updated C/D uses for this subwatershed.

It should be noted that the maximum month in this planning document may vary from subwatershed to subwatershed. There are instances where a portion of a water supply system is included within the subwatershed from more than one purveyor. For the municipal analysis, the total distribution system pumping (by pressure zone, if available) for each water purveyor should be calculated for each water purveyor and the maximum month chosen based off of that calculation.

Water Use and Conservation Management Plan for  
HUC14 02030105060030

**Table 7 - Re-evaluated Net Water Availability**  
**02030105060030 (Raritan River NB (incl McVickers to India Brook))**

Year	Ag Ground Water Availability (mgd)	Non-Ag Ground Water Availability (mgd)	Total Non-Ag Consumptive Use (mgd) <sup>1</sup>	Imported Septic Return (mgd) <sup>2</sup>	Ag Net Water Availability (mgd)	Non-Ag Net Water Availability (mgd) <sup>3</sup>	Surplus for Potential Use (mgd) <sup>4</sup>
Published	0	0.1155	0.1265	0	0	-0.0110	-
2000	0	0.1155	Missing Data	0.2023	0	N/A	-
2001	0	0.1155	Missing Data	0.2023	0	N/A	-
2002	0	0.1155	-0.3766	0.2023	0	0.1155	0.579
2003	0	0.1155	-0.3915	0.2023	0	0.1155	0.594
2004	0	0.1155	-0.3516	0.2023	0	0.1155	0.554
2005	0	0.1155	-0.2544	0.2023	0	0.1155	0.457
2006	0	0.1155	-0.3996	0.2023	0	0.1155	0.602
2007	0	0.1155	Missing Data	0.2023	0	N/A	-
2008	0	0.1155	Missing Data	0.2023	0	N/A	-
2009	0	0.1155	Missing Data	0.2023	0	N/A	-

<sup>1</sup> [Consumptive Public Supply] + [Consumptive Domestic] + [Surface Water Diversions] – [Septic System Return from Public Supply within HUC14] – [Sept Wastewater Return within HUC14]

<sup>2</sup> From Public Supply wells outside the HUC14

<sup>3</sup> [Ground Water Availability] – [Non-Ag Consumptive Use] + [Imported Septic System Return from Public Supply outside the HUC14]

<sup>4</sup> Occurs when there is an import of water which is returned to the HUC through septic return.

Missing domestic supply from golf course. Based on other reported data, not likely to significantly impact NWA.

“Missing Data”: One or more sources of data were not reported.

“N/A”: One or more of the components to C/D use is missing and C/D use and NWA could not be calculated.

Refer to Appendix for further Explanation of terms.

**Water Use and Conservation Management Plan for  
HUC14 02030105060030**

**Summary of Significant Causes of Deficit**

Following is a summary of the range of re-evaluated NWA calculations:

**Table 8 - Summary of NWA Results**

HUC14	NWA – Minimum (mgd)	NWA Maximum (mgd)
02030105060030 (Raritan R NB (incl McVickers to India Bk)	0.1155	0.1155

mgd = million gallons per day

This subwatershed imports almost all water and it is discharged into the HUC14 either to surface water or groundwater. As a result, the deficit is eliminated.

# Water Conservation/Deficit Mitigation Strategies

The following table summarizes the water use management techniques and mitigation strategies to protect against future deficits that this WUCMP could use to reduce and/or eliminate the water deficit in this subwatershed.

**Table 9 - Summary of Conservation and Deficit Mitigation Strategies**

Measure	Res	Com/ Indust/ Inst	Water Purveyor	Golf	Mun
<b>Water Use Reduction</b>					
Heating System Upgrades		✓			
Hot Water Heater Upgrade	✓	✓			
Hydrant Locks			✓		
Avoid Overspray	✓	✓			
Building and Pipe Insulation	✓	✓			
Cleaning	✓	✓			
Community Garden	✓				✓
Cooling System Upgrades		✓			
Crop and Soil Selection					
Dishwasher Upgrade	✓	✓			
Drip Irrigation	✓	✓			
Drought Contingency Plans			✓		✓
Equipment Condensation		✓	✓		
Irrigation Conservation	✓	✓		✓	✓
Irrigation Education			✓		✓
Irrigation System Design	✓	✓		✓	✓
Landscape Design	✓	✓		✓	
Landscape Incentive Program					✓
Leak Detection and Repair	✓	✓	✓	✓	
Low Flow Faucets/Faucet Aerators	✓	✓		✓	
Low Flow Shower Fixtures	✓	✓			
Low Flow Toilet Fixtures	✓	✓		✓	
Low Volume Irrigation	✓	✓		✓	
Maintenance	✓	✓	✓	✓	
Meter Calibration/Replacement			✓		
Night Watering	✓	✓		✓	
Plumbing Incentive Program		✓			✓
Pre-Rinse/Commercial Kitchen Upgrades		✓			

Water Use and Conservation Management Plan for  
HUC14 02030105060030

**Table 9 - Summary of Conservation and Deficit Mitigation Strategies**

Measure	Res	Com/ Indust/ Inst	Water Purveyor	Golf	Mun
Process Water Optimization		✓			
Public Education Handouts		✓	✓		✓
Public Workshops					✓
Rate Structure			✓		
Revised Irrigation Ordinance					✓
School Conservation Programs			✓		✓
Submetering	✓	✓	✓		
Swimming Pool Covers	✓				
Turfgrass Selection				✓	
Washing Machine Upgrade	✓	✓			
Water Bill Structure/Comparison	✓	✓	✓		
Water Conservation Programs		✓	✓	✓	✓
Water Treatment Improvements			✓		
Waterless Urinals		✓		✓	
Well Optimization			✓		
<b>Reuse and Reclamation</b>					
Graywater Recharge	✓	✓			
Graywater Reuse for Irrigation	✓	✓			
Internal Infrastructure Graywater Reuse		✓			
Internal Infrastructure Stormwater Reuse		✓			
<b>Storage</b>					
Composting	✓	✓		✓	
Install Geotextiles Under Plantings	✓	✓		✓	
Rainwater Harvesting/Rainwater Cistern	✓	✓			
Water Storage Tank Management			✓		
<b>Recharge</b>					
Assisted Infiltration/Enhanced Recharge	✓	✓		✓	✓
Building Interceptor Dykes, Swales and Berms	✓	✓		✓	✓
Injection Wells		✓			
Modifications to Zoning					✓
Stormwater Ordinance					✓
Porous Paving	✓	✓			✓
Rainwater Harvesting/Rain Gardens	✓	✓			
Retrofit Existing Detention Basins		✓			✓

# Evaluation and Ranking of Water Conservation Strategies

## Evaluation

To determine the best mitigation strategies for this WUCMP, a simple qualitative ranking system was developed. This system considers seven attributes of each potential strategy from the perspective of a user in these subwatersheds. The seven attributes are:

1. *Feasibility* – Can the strategy be implemented by a specific type of user? Strategies that have a high ranking for Feasibility can be implemented relatively easily. Implementing a night watering program is considered a highly feasible deficit mitigation strategy.
2. *Effectiveness* – If the strategy is implemented by a specific type of user, will it create the desired effect? Strategies that have a high ranking for Effectiveness offer the best opportunity to directly reduce the NWA deficit. Example: Using a broom rather than a hose or power washer to clean a driveway is considered a highly effective deficit mitigation strategy.
3. *Resilience and Reliability* – Once the strategy is implemented, how susceptible is it to failure, and how much maintenance will it require to remain in operation? Strategies that have a high ranking for Resilience and Reliability are expected to be implemented consistently over long periods. Example: Installation of a graywater system is considered a highly resilient and reliable deficit mitigation strategy.
4. *Reduction Potential and Market Penetration* – Once the strategy is working, what regional reduction in deficit can be expected, based on the number of users likely to implement the strategy? Strategies that have high rankings for Reduction Potential and Market Penetration offer opportunity for implementation by the greatest number of stakeholders. Example: Installation of low-flow plumbing fixtures is highly ranked for reduction potential and market penetration.
5. *Administrative Complexity and Availability of Implementing Entities* – How difficult will it be to launch, monitor, and evaluate the effectiveness of the mitigation strategy? Strategies that are highly ranked for Administrative Complexity and Availability of Implementing Entities are simple to implement and can be implemented by existing entities. Examples: modifying a stormwater ordinance or implementing a new rate structure.
6. *Cost and Cost Effectiveness* – What is the efficiency of a mitigation strategy in terms of cost per unit of reduction? Strategies that are highly ranked for Cost and Cost Effectiveness offer the “biggest bang for the buck”. Examples: plumbing incentive programs and drought contingency plans.
7. *Schedule* – How long will it take to implement the mitigation strategy? Strategies that are highly ranked for Schedule can be implemented quickly. Example: public education handouts.

Each mitigation strategy was ranked for each of the seven attributes listed above. A value of 1, 2 or 3 was assigned based on the degree to which each strategy embodies each attribute. A ranking of 3 indicates:

## **Water Use and Conservation Management Plan for HUC14 02030105060030**

- Highly feasible
- Very effective
- Highly resilient and reliable
- High potential for deficit reduction and market penetration
- Simple strategy to administer; implementing entities available
- Short time required to implement

Scores for each strategy are listed in Tables 10 through 14 for residential, commercial / industrial / institutional, water purveyors, golf courses, and municipalities respectively.

The evaluation was conducted under two scenarios and it is anticipated that it will be repeated following stakeholder input to assign weights to each attribute. The following scenarios were evaluated:

- Equal weight – each of the seven attributes was weighted equally. This is analogous to simply summing the scores in each table.
- Weighted for consumptive/depletive use reduction – a weight of 50% was assigned to the C/D reduction attribute and all other attributes were weighted equally (8.3% each).

**Water Use and Conservation Management Plan for  
HUC14 02030105060030**

**Table 10 - Scoring for Conservation and Deficit Mitigation Strategies Applicable to Residential Users**

<b>Measure</b>	<b>Feasibility</b>	<b>Effectiveness</b>	<b>Resilient/ Reliable</b>	<b>Reduction Potential</b>	<b>Complexity</b>	<b>Cost</b>	<b>Schedule</b>
Avoid Overspray	3	2	1	2	1	3	3
Building and Pipe Insulation	3	2	2	1	1	2	2
Cleaning	3	3	1	2	1	2	2
Community Garden	3	2	2	1	1	2	1
Composting	3	2	2	1	1	3	3
Dishwasher Upgrade	3	2	3	2	1	2	2
Hot Water Heater Upgrade	3	2	3	2	1	2	2
Install Geotextiles Underneath Plantings	3	2	2	1	1	2	2
Irrigation Conservation	3	2	1	2	1	3	3
Irrigation System Design	3	2	3	1	1	2	2
Landscape Design	3	2	2	1	1	2	2
Leak Detection and Repair	1	1	1	1	1	1	1
Low Flow Faucets/Faucet Aerators	3	2	3	2	1	3	3
Low Flow Shower Fixtures	3	2	3	2	1	3	3
Low Flow Toilet Fixtures	3	2	3	2	1	2	3
Maintenance	3	2	2	1	1	2	3
Night Watering	3	2	2	2	1	3	3
Porous Paving	1	3	2	2	1	1	1
Rainwater Harvesting/Rain Barrels	3	3	2	1	1	2	2
Rainwater Harvesting/Rain Gardens	3	2	2	1	1	2	2
Submetering	1	1	2	1	1	1	1
Swimming Pool Covers	3	2	2	1	1	1	3
Washing Machine Upgrade	3	2	3	2	1	2	3
Water Bill Structure/Comparison	3	3	3	3	3	3	3



**Water Use and Conservation Management Plan for  
HUC14 02030105060030**

**Table 11 - Scoring for Conservation and Deficit Mitigation Strategies Applicable to Commercial/Industrial/Institutional Users**

<b>Measure</b>	<b>Feasibility</b>	<b>Effectiveness</b>	<b>Resilient/ Reliable</b>	<b>Reduction Potential</b>	<b>Complexity</b>	<b>Cost</b>	<b>Schedule</b>
Avoid Overspray	3	2	1	2	2	3	3
Building and Pipe Insulation	3	2	2	1	2	2	2
Building Interceptor Dykes, Swales and Berms	1	2	2	2	2	2	2
Cleaning	3	3	2	2	2	2	2
Composting	2	1	1	1	2	2	3
Cooling System Upgrades	2	2	2	2	1	1	1
Dishwasher Upgrade	3	2	3	2	2	2	2
Graywater Systems	3	2	3	2	2	2	1
Heating System Upgrades	2	2	2	2	1	1	1
Hot Water Heater Upgrade	3	2	3	2	2	2	2
Install Geotextiles Underneath Plantings	3	2	2	1	2	2	2
Internal Infrastructure Graywater Reuse	1	2	2	2	1	1	1
Internal Infrastructure Stormwater Reuse	3	2	2	2	2	2	1
Irrigation Conservation	3	2	1	2	2	3	3
Irrigation System Design	3	3	3	3	2	2	3
Landscape Design	3	2	2	1	2	2	2
Leak Detection and Repair	2	2	2	1	2	1	1
Low Flow Faucets/Faucet Aerators	3	2	3	2	2	2	3
Low Flow Shower Fixtures	2	2	2	2	2	2	3
Low Flow Toilet Fixtures	3	2	3	2	2	2	3
Maintenance	3	2	2	1	2	2	3
Night Watering	3	2	2	2	2	3	3
Pre-Rinse Spray Valve and Commercial Kitchen Conservation	3	2	2	2	2	2	2
Public Education Handouts	3	2	1	1	1	3	3
Rainwater Harvesting/Rain Barrels	3	2	2	1	1	2	2

**Water Use and Conservation Management Plan for  
HUC14 02030105060030**

**Table 11 - Scoring for Conservation and Deficit Mitigation Strategies Applicable to Commercial/Industrial/Institutional Users**

<b>Measure</b>	<b>Feasibility</b>	<b>Effectiveness</b>	<b>Resilient/ Reliable</b>	<b>Reduction Potential</b>	<b>Complexity</b>	<b>Cost</b>	<b>Schedule</b>
Rainwater Harvesting/Rain Gardens	3	2	2	1	2	2	2
Submetering	1	1	2	1	1	1	1
Washing Machine Upgrade	2	2	3	1	2	2	3
Water Bill Structure/Comparison	2	2	3	3	3	3	3
Water Conservation Programs	3	2	1	2	2	3	3
Water Treatment Improvements	2	2	1	1	1	1	1
Waterless Restroom	1	2	1	2	1	1	1
Assisted Infiltration/Enhanced Recharge	3	2	2	2	2	2	2
Porous Paving	2	2	2	1	1	1	1
Injection Wells	1	3	2	2	1	1	1
Equipment Condensation	3	1	2	1	3	3	3
Retrofit Existing Detention Basins	3	3	3	3	2	2	1

**Water Use and Conservation Management Plan for  
HUC14 02030105060030**

**Table 12 - Scoring for Conservation and Deficit Mitigation Strategies Applicable to Water Purveyors**

<b>Measure</b>	<b>Feasibility</b>	<b>Effectiveness</b>	<b>Resilient/ Reliable</b>	<b>Reduction Potential</b>	<b>Complexity</b>	<b>Cost</b>	<b>Schedule</b>
Water Bill Structure/Comparison	3	3	3	3	3	3	3
Rate Structure	3	3	3	3	3	3	3
Meter Calibration/Replacement	2	2	2	2	3	2	1
Drought Contingency Plans	2	2	2	3	3	3	3
Water Treatment Improvements	3	3	3	3	3	3	2
Hydrant Locks	2	1	2	1	3	1	1
Well Optimization	3	2	2	2	3	2	2
Public Education Handouts	2	1	1	1	3	2	1
School Conservation Programs	2	2	2	1	3	3	1
Irrigation Education	2	2	2	1	2	3	1
Water Conservation Programs	3	3	1	1	3	2	3
Leak Detection and Repair	3	3	3	3	3	3	3
Submetering	2	2	2	2	3	2	3
Equipment Condensation	3	1	2	1	3	3	3
Maintenance	3	3	2	2	2	3	3
Water Storage Tank Management	3	2	3	2	3	2	3

**Water Use and Conservation Management Plan for  
HUC14 02030105060030**

**Table 13 - Scoring for Conservation and Deficit Mitigation Strategies Applicable to Golf Courses**

<b>Measure</b>	<b>Feasibility</b>	<b>Effectiveness</b>	<b>Resilient/ Reliable</b>	<b>Reduction Potential</b>	<b>Complexity</b>	<b>Cost</b>	<b>Schedule</b>
Assisted Infiltration/Enhanced Recharge	3	2	2	2	2	2	2
Avoid Overspray	3	2	1	2	2	3	3
Building Interceptor Dykes, Swales and Berms	1	2	2	2	2	2	2
Compost	1	1	1	1	2	2	3
Graywater Systems	2	2	2	2	1	1	1
Install Geotextiles Under Plantings	3	2	2	1	1	2	2
Irrigation Conservation	3	2	1	2	2	3	3
Irrigation System Design	3	3	3	3	2	2	3
Landscape Design	3	2	2	1	1	2	2
Leak Detection and Repair	2	2	2	1	3	2	2
Low Flow Faucets/Faucet Aerators	3	2	3	1	1	3	3
Low Flow Toilet Fixtures	3	2	3	1	1	2	3
Maintenance	3	2	2	1	2	3	3
Night Watering	2	2	2	2	2	3	3
Submetering	1	1	2	1	1	1	1
Turfgrass Selection	3	2	3	2	3	2	3
Water Conservation Programs	3	2	1	2	2	3	3
Waterless Restroom	1	2	1	2	1	1	1

**Water Use and Conservation Management Plan for  
HUC14 02030105060030**

**Table 14 - Scoring for Conservation and Deficit Mitigation Strategies Applicable to Municipalities**

<b>Measure</b>	<b>Feasibility</b>	<b>Effectiveness</b>	<b>Resilient/ Reliable</b>	<b>Reduction Potential</b>	<b>Complexity</b>	<b>Cost</b>	<b>Schedule</b>
Assisted Infiltration/Enhanced Recharge	3	2	2	2	1	2	2
Building Interceptor Dykes, Swales and Berms	2	1	2	2	1	2	2
Community Garden	3	2	2	1	1	2	1
Drought Contingency Plans	2	2	2	1	1	3	3
Irrigation Education	3	2	1	2	1	3	3
Irrigation System Design	3	2	3	1	1	2	2
Landscape Incentive Program	3	2	2	1	1	1	3
Modifications to Zoning	1	1	3	3	3	3	3
Modify Stormwater Ordinance	3	2	3	3	3	3	3
Plumbing Incentive Program	3	2	2	1	1	3	2
Porous Paving	1	3	2	2	1	1	1
Public Education Handouts	3	2	1	1	1	3	3
Public Workshops	3	2	1	1	2	3	3
Retrofit Existing Detention Basins	3	3	3	3	2	2	1
Revised Irrigation Ordinance (Odd/even, rain sensor requirements, etc.)	3	2	3	3	1	2	3
School Conservation Programs	3	2	1	1	2	2	3
Water Conservation Programs	3	2	1	2	1	3	3

## Ranking of Deficit Mitigation Strategies

Deficit mitigation strategies that are relevant to this subwatershed have been ranked and the top ten strategies for each water user category are listed in Tables 10 through 14. An evaluation program called EVAMIX was utilized to rank each strategy. EVAMIX is a well-tested multi-criteria evaluation program that is used to rank alternatives. The program takes raw data, both quantitative and qualitative, normalizes it and uses the data to compare alternatives while helping stakeholders understand which factors have greater or lesser impact on the outcome. This process uses the scores that were assigned in Tables 15 through 19 and determining the *relative* weight of each of the categories or attributes. The weights for each attribute are relative to each other and the sum of the weights must equal 1.0 (100%). For example, if a stakeholder thought that feasibility was the most important attribute, perhaps they would assign a weight of 40% to that attribute and 10% to each of the others.

**Table 15 - Ranked Mitigation Management Strategies for Residential Users**

Rank	Equal Weight	Weighted to C/D Reduction	Rank
1	Water Bill Structure/Comparison	Water Bill Structure/Comparison	1
2	Irrigation System Design	Irrigation System Design	2
3	Low Flow Faucets/Faucet Aerators	Low Flow Faucets/Faucet Aerators	3
3	Low Flow Shower Fixtures	Low Flow Shower Fixtures	3
5	Low Flow Toilet Fixtures	Low Flow Toilet Fixtures	5
5	Washing Machine Upgrade	Night Watering	5
7	Night Watering	Washing Machine Upgrade	5
8	Avoid Overspray	Avoid Overspray	8
8	Irrigation Conservation	Irrigation Conservation	8
10	Dishwasher Upgrade	Dishwasher Upgrade	10

**Table 16 - Ranked Mitigation Management Strategies for  
Commercial/Industrial/Institutional Users**

Rank	Equal Weight	Weighted to C/D Reduction	Rank
1	Irrigation System Design	Irrigation System Design	1
2	Water Bill Structure/Comparison	Water Bill Structure/Comparison	2
3	Retrofit Existing Detention Basins	Retrofit Existing Detention Basins	3
4	Low Flow Faucets/Faucet Aerators	Low Flow Faucets/Faucet Aerators	4
4	Low Flow Toilet Fixtures	Low Flow Toilet Fixtures	4
6	Night Watering	Night Watering	6
7	Cleaning	Cleaning	7
8	Dishwasher Upgrade	Dishwasher Upgrade	8
8	Hot Water Heater Upgrade	Hot Water Heater Upgrade	8
10	Water Conservation Programs	Water Conservation Programs	10

**Water Use and Conservation Management Plan for  
HUC14 02030105060030**

**Table 17 - Ranked Mitigation Management Strategies for Water Purveyors**

<b>Rank</b>	<b>Equal Weight</b>	<b>Weighted to C/D Reduction</b>	<b>Rank</b>
1	Leak Detection and Repair	Leak Detection and Repair	1
1	Rate Structure	Rate Structure	1
1	Water Bill Structure/Comparison	Water Bill Structure/Comparison	1
4	Water Treatment Improvements	Water Treatment Improvements	4
5	Water Storage Tank Management	Drought Contingency Plans	5
6	Maintenance	Water Storage Tank Management	6
7	Drought Contingency Plans	Maintenance	7
8	Equipment Condensation	Well Optimization	8
9	Water Conservation Programs	Submetering	9
10	Well Optimization	Meter Calibration/Replacement	10

**Table 18 - Ranked Mitigation Management Strategies for Golf Courses**

<b>Rank</b>	<b>Equal Weight</b>	<b>Weighted to C/D Reduction</b>	<b>Rank</b>
1	Irrigation System Design	Irrigation System Design	1
2	Turfgrass Selection	Turfgrass Selection	2
3	Avoid Overspray	Avoid Overspray	3
3	Irrigation Conservation	Irrigation Conservation	3
3	Night Watering	Water Conservation Programs	3
3	Water Conservation Programs	Night Watering	6
7	Maintenance	Assisted Infiltration/Enhanced Recharge	7
8	Low Flow Faucets/Faucet Aerators	Building Interceptor Dykes, Swales and Berms	8
9	Assisted Infiltration/Enhanced Recharge	Graywater Systems	9
10	Low Flow Toilet Fixtures	Waterless Restroom	10

**Water Use and Conservation Management Plan for  
HUC14 02030105060030**

**Table 19 - Ranked Mitigation Management Strategies for Municipalities**

<b>Rank</b>	<b>Equal Weight</b>	<b>Weighted to C/D Reduction</b>	<b>Rank</b>
1	Stormwater Ordinance	Stormwater Ordinance	1
2	Retrofit Existing Detention Basins	Retrofit Existing Detention Basins	2
3	Modifications to Zoning	Modifications to Zoning	3
4	Revised Irrigation Ordinance (Odd/even, rain sensor requirements, etc.)	Revised Irrigation Ordinance (Odd/even, rain sensor requirements, etc.)	4
5	Public Workshops	Irrigation Education	5
6	Irrigation Education	Water Conservation Programs	5
6	Water Conservation Programs	Assisted Infiltration/Enhanced Recharge	7
8	School Conservation Programs	Porous Paving	8
9	Public Education Handouts	Building Interceptor Dykes, Swales and Berms	9
10	Plumbing Incentive Program	Public Workshops	10



# Funding Opportunities

## Public Funding Sources

### Highlands Council Planning Grants

The Highlands Council will approve the WUCMP following an opportunity for formal public review and comment. Upon approval, the WUCMP will become a component of the Plan Conformance process for the affected municipalities. The Highlands Act provides for state funding to support planning efforts necessary to implement Plan Conformance. In the case of a WUCMP, state funding is available to address necessary modifications (if any) to the Highlands Area Land Use Ordinance, and implementation planning for other components. In addition, the municipality may request additional planning funds to develop mitigation strategies. The Highlands Council is not currently authorized to provide capital grants for project implementation, but the Highlands Council will work with the municipalities to identify and obtain funding from other state and federal agencies (see below) for such purposes.

### State Program Grants

The following state agencies should be considered for state program grants:

- New Jersey Department of Agriculture (NJDA)
- New Jersey Department of Environmental Protection (NJDEP)
- New Jersey Department of Community Affairs (DCA)

The official website for the State of New Jersey provides links to various grant opportunities throughout the state. The following is a direct link to state grants by department or agency:

<http://www.nj.gov/nj/gov/njgov/grants.html>

In addition, water supply, wastewater and stormwater infrastructure improvements may be eligible for low-interest loans from the New Jersey Environmental Infrastructure Financing Program:

<http://www.njeit.org/>

The Small Cities Community Development Block Grant (CDBG) program offers funding for local needs for which no other source of funding is available.

<http://www.nj.gov/dca/divisions/dhcr/offices/cdbg.html>

### Federal Program Grants

Federal funding is available for water conservation and water use technology. Grants are one way to obtain funding for a water conservation project. A searchable database of federal program grants can be accessed at [www.grants.gov](http://www.grants.gov). For federal grants the following agencies and their components should be considered:

## Water Use and Conservation Management Plan for HUC14 02030105060030

- Environmental Protection Agency (EPA) – of note are:
  - The Catalog of Federal Funding Sources for Watershed Protection (<http://cfpub.epa.gov/fedfund/>)
  - Office of Wetlands, Oceans, and Watersheds – Watershed Funding (<http://water.epa.gov/aboutow/owow/funding.cfm>)
- United States Department of Agriculture (USDA)
- United States Department of Energy (USDOE)
- United States Department of the Interior (USDOI)
- United States Department of Housing and Urban Development (HUD) – including Community Development Block Grants (CDBG)
- USGS – including cooperative agreements

Grants may be available from multiple components of the agencies listed above, so when searching for grants, do not immediately rule out agencies with names different from those listed. Each grant in the Grants.gov database has a summary/description and eligibility requirements.

The Natural Resources Conservation Service (NRCS) is a notable component of the USDA to consider for funding.

Activities in planning for green building, including activities in the Leadership in Energy and Environmental Design (LEED) program, are supported by EPA through funding for governments, non-profit organizations, consumers and industries who are striving to conserve energy. The following website details some of the funding opportunities provided by EPA regarding green building:

<http://www.epa.gov/greenbuilding/tools/funding.htm>

## Private Funding Sources

### Development

Funding from development activities can be implemented through changes to construction codes and development review ordinances, including the Highlands Area Land Use Ordinance.

### Commercial Entities

Cooperative events with local businesses can be used to raise funds or provide discounts to local stakeholders to promote water conservation.

### Foundations

The following are some foundations that offer funding opportunities:

- National Fish and Wildlife Foundation (<http://www.nfwf.org/>)
- River Network (<http://www.rivernetwork.org/>)
- American Rivers (<http://www.amrivers.org/>)
- Center for Watershed Protection (<http://www.cwp.org/>)
- Trout Unlimited (<http://www.tu.org/>)

## **Other Non-Governmental Organizations**

The American Water Works Association (AWWA) participates in grant and research programs for water conservation and technology. The following is a link to AWWA's website where current grant information may be found:

<http://www.awwa.org/>

The American Water Resources Association (AWRA) has information about water resources education, management and research.

<http://www.awra.org/>

## **Municipalities and Utilities**

### **Municipal Capital Projects**

Municipalities periodically repair, rehabilitate or replace municipal facilities. In municipal capital projects, incorporation of improved fixtures, irrigation methods, stormwater capture and recharge, and other methods for reducing water consumption and depletion can be highly cost-effective. Some water conservation methods have relatively short payback periods, especially those that reduce hot water use.

### **Utility Operations**

Utilities also periodically repair, rehabilitate or replace their capital facilities, with most of the costs funded through user charges. These projects, when part of a planned preventive maintenance program, can reduce the long-term costs of operating the utility by minimizing the potential for emergency repairs. Utilities also may address constraints on water line service capacity by encouraging water conservation by customers. Such projects reduce both water losses and system stress.

# Water Conservation, Deficit Reduction and Elimination Strategies

*Note: Deficit Reduction Targets and Strategies will be established upon development of a full municipal WUCMP*

## Selected Strategies

The deficit for this subwatershed has been eliminated through the incorporation of septic system returns, and exceeds the target value of a surplus of 10,000 gallons per day.

The following selected strategies are provided should this subwatershed elect to pursue water conservation measure in the future.

## Water Bill Structure/Comparison

This strategy focuses on highlighting for the residents their usage as a function of historical patterns and other users. The goal of this strategy is take advantage of behavioral science findings that people respond to peer-pressure or normative behavior. The premise is that when water users better understand the behavior of their peer group, they are more likely to change their own behavior and respond in a positive manner.

## Irrigation System Design

This strategy involves the promotion of intelligent irrigation system design for residential and commercial irrigation water use. Through the incorporation of scheduling techniques, efficient technology, and soil moisture sensors, the amount of water used for irrigation can be reduced.

Agricultural irrigation is not addressed under this strategy because no agricultural water use statistics are available for this subwatershed.

## Stormwater Ordinance

This strategy involves developing a stormwater ordinance or improving an existing stormwater ordinance to promote recharge and/or infiltration within the subwatersheds as development occurs, beyond typical minimum standards such as those contained in N.J.A.C. 7:8 et seq, N.J.A.C. 5:21 et seq. (Residential Site Improvement Standards), or the Highlands Area Land Use Ordinance.

## Leak Detection and Repair

The strategy involves the use of sonic or other methods to detect water escaping the distribution system. Leaks at stream crossings are among the most difficult to detect and repair.

Proactive programs for leak detection can reduce downtime for emergency repairs. Such programs should look to survey the entire system at least once every 5 years in a phased manner.

## Rate Structure

This strategy entails the development of water utility rate structures that promote water conservation. Generally, these rate structures encourage customers to use less water while still providing affordable water, and informing the public about the real cost of this limited critical resource. Revenue from surcharge rates charged to high-use customers can be used to promote conservation through incentive and education programs.

## Water Conservation and Deficit Reduction Target

*TBD upon development of a full municipal WUCMP*

## Water Conservation and Deficit Reduction Estimates

### Water Bill/Structure Comparison

There is a population of approximately 750 persons served by a public water supply in the WUCMP area (based on 2010 Census data). Approximately half the users will have above average water usage and could potentially be targeted by the strategy. It is reasonable to assume a 1% reduction in water usage using this deficit mitigation strategy, but higher rates are possible.<sup>10</sup>

Average water withdrawal in the existing areas served by public water supply in this WUCMP area has not been reported. The estimated withdrawals for this subwatershed are as follows:

- New Jersey American Water Company (Short Hills)— 0.075 mgd
- United Water NACO, LLC – 0.025 mgd

The above estimates are based on water service areas of a similar size and population within the Highlands Region.

Using the 1% reduction rate indicated above, approximately 1,000 gallons per day can be conserved.

### Irrigation System Design

Some experts estimate that up to 50 percent of commercial and residential irrigation water use goes to waste due to evaporation, wind, improper system design, or overwatering.<sup>11</sup> This strategy is focused on the design of intelligent irrigation system that utilize current technologies such as irrigation controllers, soil moisture sensors, rain shut off switches, or efficient sprinkler heads.

As the basis for this strategy, the total amount of irrigated land in the subwatersheds was estimated using a GIS analysis. Using NJDEP's 2007 Land Use/Land Cover feature dataset, land use types associated with residential, commercial, and athletic field land uses were isolated for this subwatershed.

---

<sup>10</sup> Hoffman, Jeff, "Calculating Conservation: The Competitive Power of the Water Bill", The Aquifer, Vol 24, No. 4, Spring 2010.

<sup>11</sup> Outdoor Water Use in the United States, Environmental Protection Agency, Water Sense – An EPA Partnership, Retrieved from < <http://www.epa.gov/WaterSense/pubs/outdoor.html> >.

## Water Use and Conservation Management Plan for HUC14 02030105060030

The total irrigated portion of the land use types indicated above was estimated to be 10% of the total pervious land area identified in the residential, commercial, and athletic field land use types.

The peak irrigation rate for residential, commercial, and athletic fields was estimated to be 8 gpm/acre. This is consistent with 1-inch of water per irrigation, occurring for 8 hours over a 7 day period.<sup>12</sup>

Based on the GIS analysis described above, the following table of acreage by land use type was developed:

**Table 20 – Estimated Total Pervious Acres and Irrigated Acres by Land Use Type**

County	Pervious Acres by Land Use Type			Total
	Residential	Commercial	Athletic Field	
Morris	635	18	-	653
	10	-	-	10
Total Acres	644	18	-	662
Estimated Total Irrigated Acres*	64	2	-	66

\*Estimated Total Irrigated Acres = Total Pervious Acres x 10%

Based on the total irrigated acreage and a peak irrigation rate of 8 gpm/acre, a total of 530 gpm peak irrigation is estimated. However, this rate is estimated to occur for a total of 8-hours over the course of a 7-day period. Using these boundary conditions, this equates to an average irrigation water usage of approximately 36,000 gallons per day.

We have conservatively estimated irrigation water usage can be reduced by 10% using this strategy. Using this estimate, approximately 3,600 gallons per day can be conserved.

## Stormwater Ordinance

The premise of this deficit mitigation strategy is that baseflow could be enhanced by the construction of recharge and/or infiltration basins.

In keeping with current NJDEP guidance, this strategy is based on the infiltration facilitated by a design storm of 0.31 inches (one-quarter of the NJDEP stormwater quality design storm of 1.25 inches).<sup>13</sup> For the purpose of this estimate, we are assuming 50% of the total rainfall is infiltrated and the basin is approximately 3 acres in size.

---

<sup>12</sup> New Jersey Irrigation Guide (June 2005), United States Department of Agriculture, Natural Resources Conservation Service, Somerset, NJ, Chapter 6, Table NJ 6.7, page NJ6-15.

<sup>13</sup> Carleton, Glen B, Simulation of Groundwater Mounding Beneath Hypothetical Stormwater Infiltration Basins, Scientific Investigations Report 2010-5102, USGS, Reston, VA, 2010.

## Water Use and Conservation Management Plan for HUC14 02030105060030

The above assumptions equate to 18,938 gallons of additional infiltration. Over a 90 day period, this equates to 210 gallons per day for an individual rainstorm. Larger basins or more frequent recharge will increase this estimate.

### Leak Detection and Repair

Estimates of leak detection and repair will be based on “non-revenue water” which describes water that has been produced and supplied to the distribution system by the water purveyor, but is not delivered to customers. Leaks (real loss) are one component of non-revenue water. Other components include unauthorized consumption, customer metering inaccuracies, overflows at storage tanks, leakage at service connections. Real water loss within distribution systems are typically 10%.<sup>14</sup> This is consistent with current estimates of distribution system in New Jersey.<sup>15</sup>

A conservative estimate of 10% can be applied to the reduction of real water loss volume as the potential savings in water use.<sup>16</sup>

Average water withdrawal in the existing areas served by public water supply in this WUCMP area has not been reported. The **estimated** withdrawals for this subwatershed are as follows:

- New Jersey American Water Company (Short Hills)– 0.075 mgd
- United Water NACO, LLC – 0.025 mgd

The above estimates are based on water service areas of a similar size and population within the Highlands Region.

Based on the assumptions indicated above, the real water loss is estimated at 10% or 10,000 gallons per day. Using the 1% reduction rate indicated above, approximately 1,000 gallons per day can be conserved.

### Rate Structure

The relationship between water rates and water usage/conservation has been the subject of study for many years. The economics of this unique relationship have been explored in various studies, and it is recognized that even within the Highlands, different rate structures may be required.

---

<sup>14</sup> Lambert, Allan, Assessing non-revenue water and its components, Water Loss – IAP Task Force, Water21, August 2003, Issue 5.4, pp. 50-51.

<sup>15</sup> Caroom, Eliot, (2012-05-12), “Water utilities cleared by state to make swifter repairs (and increases to bills)”, *The Star Ledger*. Retrieved from <[http://www.nj.com/business/index.ssf/2012/05/water\\_utilities\\_cleared\\_by\\_sta.html](http://www.nj.com/business/index.ssf/2012/05/water_utilities_cleared_by_sta.html)>

<sup>16</sup> Guidance Document, Water Leak Detection and Repair Program (August 2007), Georgia Environmental Protection Division, Watershed Protection Branch, Retrieved from <[http://www1.gadnr.org/cws/Documents/Leak\\_Detection\\_and\\_Repair.pdf](http://www1.gadnr.org/cws/Documents/Leak_Detection_and_Repair.pdf)>

## Water Use and Conservation Management Plan for HUC14 02030105060030

However, for the purposes of estimating potential water conservation, it is reasonable to assume reductions in water usage of 1% assuming a rate increase of 10%.<sup>17</sup>

Average water withdrawal in the existing areas served by public water supply in this WUCMP area has not been reported. The **estimated** withdrawals for this subwatershed are as follows:

- New Jersey American Water Company (Short Hills)– 0.075 mgd
- United Water NACO, LLC – 0.025 mgd

The above estimates are based on water service areas of a similar size and population within the Highlands Region.

Given a 10% increase in rates, and the resulting 1% reduction in water use, approximately 1,000 gallons per day can be conserved.

## Summary of Savings Potential

Following is a summary table of the potential savings in water use estimated under this Plan:

**Table 21 - Summary of Potential Water Use Reductions**

Strategy	Potential Savings (gpd)
Water Bill/Structure Comparison	1,000
Irrigation System Design	3,600
Stormwater Ordinance*	210
Leak Detection and Repair	1,000
Rate Structure	1,000

\*Note: this is on a per rainfall event basis.

The above table presents potential savings that are representative of withdrawals during the June-July-August period.

Selection of a combination of the above strategies should be considered as measures to help work toward achieving the Net Water Availability targets for this WUCMP area.

---

<sup>17</sup> American Water Works Association (AWWA). (2000). Principles of Water Rates, Fees, and Charges. *American Water Works Association Manual of Water Supply Rates, M1*. (Fifth Edition). Published by American Water Works Association.



# Monitoring and Annual Water Use and Return Data

The mitigation strategies selected to reduce the deficit in the subwatershed must be evaluated periodically. A cursory annual review of each strategy will be conducted to determine its effectiveness and a more detailed biennial review will update the Net Water Availability tables of this WUCMP. The biennial review will include an analysis of the likelihood of achieving the target reduction in the Net Water Availability deficit via the mitigation strategy. The same analytical techniques used in the initial Net Water Availability determination will be used to determine the future deficit or surplus within the subwatershed.

For municipal plans, annual monitoring will be required. A monitoring form has been included here as Appendix B. This form will be made available online to facilitate efficient completion and submittal. It is anticipated that the form will be submitted to the Highlands Council on October 30<sup>th</sup> of each year, corresponding with submittal of water use forms to DEP. The monitoring period that will be reflected by the form will be October 1 through September 30 (although data will represent June through September of that particular year). One form will be submitted for each HUC14 subwatershed within the municipality. Appendix B includes an example subwatershed for Sparta Township.

## Annual Water Use and Return Data

Each year, a review will be conducted of water use data for these watersheds for the preceding year. This data can be obtained from the water purveyor (New Jersey American Water Company or United Water NACO).

The NJDEP well database, which identifies well systems by Public Water System Identification (PWSID) numbers, should also be monitored annually to see if any public, residential, commercial/industrial, irrigation, or other category of well has been constructed in the preceding year. Once the population is adjusted and new wells are identified, water use in these watersheds should be re-calculated and compared to the results of the initial calculation.

USGS stream gauges and monitoring stations are present within these subwatersheds, and may be a valuable source of data. Each gauge and station should be evaluated to determine if it offers a viable means for monitoring Deficit Mitigation Strategies.

A re-evaluation of septic system returns for these subwatersheds should be performed biennially. The re-evaluation should update the total number of septic systems and identify any new or expanded public sanitary sewer service within the subwatersheds.

The existing ArcGIS database should be updated to show any new stormwater management basins where enhanced recharge has been implemented and any new sewer discharge points. After

## **Water Use and Conservation Management Plan for HUC14 02030105060030**

identification of new water return systems such as these, a new water return calculation will be performed and compared with the baseline calculation.

The re-evaluation will end with a calculation of the current deficit/surplus. As the WUCMP is implemented and adjusted, the results of each biennial review should show a reduced deficit or a surplus.

## **Stakeholder Participation and Ongoing Monitoring**

Public education plays a significant role in the success of deficit mitigation strategies. Before any strategies are eliminated or adjusted, a comparison of actual public efforts and projected public efforts should be made. This comparison can be made using the results of public surveys or inquiries to utilities and municipalities regarding their participation. The survey data should be tabulated and analyzed statistically. Statistical analysis is necessary because only a fraction of the population will respond to the survey. In preparation of this plan, an initial participation rate for each mitigation strategy was assumed. The results of the survey will provide a basis for estimating the actual participation rate for each strategy. These results may show that a mitigation strategy was unsuccessful primarily due to low participation. In that case, other strategies should be considered that may be more effective.

# Implementation Plan

## Annual Program Implementation Plan

If a deficit remains after an annual review is conducted, several issues need to be addressed. It is expected that as the implementation plan is tested and fine-tuned, it will be refined throughout the process.

The annual review to refine the implementation plan should include:

- Verification of implementation for each mitigation strategy
- Assessment of effectiveness for each mitigation strategy
- Verification of effectiveness for each mitigation strategy
- If proven non-effective, where is the process going wrong? Where can improvements be made?
- Elimination/addition of strategies.
- Creation/revision of timeline to achieve deficit reduction/elimination.

Overall, it is important that annual determinations/analysis/monitoring be conducted to verify the effectiveness of the implementation plan. A database that stores annual monitoring data should be kept, beginning with implementation of this plan and continuing after deficit elimination, to document continued compliance and ensure that a deficit does not become apparent. If monitoring is efficient and thorough, elimination of deficits should be reasonably achievable.

## Strategies

The following deficit mitigation strategies have been chosen for implementation.

### Water Bill Structure/Comparison

The implementation plan consists of coordinating with New Jersey American Water Co. or United Water NACO to develop a customizable charts or tables to compare and contrast individual water usage based on subwatershed totals.

### Irrigation System Design

The implementation plan for this strategy involves water usage data review with the water department and performance of a water audit on the largest irrigation water users in the subwatershed. Once the water audit is complete, a plan can be developed with the irrigation system owners to incorporate intelligent irrigation system design parameters and measure water conserved.

### Stormwater Ordinance

The implementation plan for this strategy involves research from municipal stakeholders to determine what elements are required for inclusion in the stormwater ordinance, or how the existing stormwater ordinance will be modified.

## **Leak Detection and Repair**

The implementation plan for this strategy is a study by the local water utilities, potentially in concert with other stakeholders, to identify leaks within the subwatersheds, and repairs to eliminate any meaningful leaks found.

Estimates of quantities lost from the identified leaks should be kept for reference and for comparison with the results of water use reduction measurements.

## **Rate Structure**

Implementation of a rate structure to promote water conservation will include determination of revenue requirements, costs of services, the marginal price of water, and future water demand targets. The responsible entity should evaluate different cost structures and implement the one best suited to the service area and its residents.

Education and engagement of customers and elected officials are highly recommended for all phases of this strategy.

## **Schedule to Achieve Water Balance**

This subwatershed has already achieved a water balance.

## **Responsible Parties**

Responsible parties for maintaining the water balance will consist of the following:

- Homeowners within Mendham Borough and Mendham Township
- Mendham Borough and Mendham Township municipal governments
- New Jersey American Water Company
- United Water NACO

We recommend development of committees representing both communities to monitor and promote progress at the municipal level.

## **Funding Commitments**

TBD

## **Next Steps**

To be determined by Stakeholders.

# Appendix A

## Background

Net water availability is defined as Ground Water Availability minus consumptive and depletive water uses. Following is a description of the different components that were used to derive the estimate of Re-Evaluated Net Water Availability in this Water Use and Conservation Management Plan (WUCMP).

## Basis for Net Water Availability

The following columns of data have been provided in the WUCMP:

Year	Ag Ground Water Availability (mgd)	Non-Ag Ground Water Availability (mgd)	Total Non-Ag Consumptive Use (mgd)	Imported Septic Return (mgd)	Non-Ag Net Water Availability (mgd)	Surplus for Potential Use (mgd)
------	------------------------------------	--	------------------------------------	------------------------------	-------------------------------------	---------------------------------

The columns of data shown above are explained in the following sections.

### Year

This column refers to the calendar year from which the data was obtained.

### Ground Water Availability

Ground Water Availability is that portion of Ground Water Capacity that is available for human uses, absent other constraints. For the purpose of the WUCMP calculations, Ground Water Availability is divided into two components. They are:

#### ***Agricultural (Ag) Ground Water Availability***

Agricultural (Ag) Ground Water Availability – Ag Ground Water Availability is not applicable in each watershed. This type of Ground Water Availability is used when the Conservation Zone covers a majority of the watershed. In this case, Ag Ground Water Availability is established and tracked separately to support sustainable agriculture.<sup>18</sup>

#### ***Non- Agricultural (Non-Ag) Ground Water Availability***

Non-Agricultural (Non-Ag) Ground Water Availability is the predominant type of Ground Water Availability and is used as the basis for net water availability for most watersheds.

---

<sup>18</sup> Highlands Council Technical Report, Water Resources Volume II Water Use and Availability” (Highlands Council, 2008), p. 123.

## **Consumptive/Depletive Uses**

Consumptive and Depletive (Water) Use totals are derived from Ground Water Pumpage and Surface Water Withdrawals. These uses are divided into two categories: Consumptive and Depletive. These two types of water use are defined as follows:

- Consumptive Uses - That part of water withdrawn that is evaporated, transpired, incorporated into products or crops, consumed by humans or livestock or otherwise removed from the immediate water environment other than by transport through pipelines and other conveyances as potable water or wastewater.
- Depletive Uses - Those water uses that physically transfer water from one watershed to another through pipelines and other conveyances as potable water or wastewater, resulting in a loss of water to the originating watershed.

## **Total Non-Ag Consumptive Use**

Non-Ag Consumptive Use is calculated as follows:

$$\begin{aligned} \text{Total Non-Ag Consumptive Use} = & [\text{Adjusted Consumptive Domestic Use}] + \\ & [\text{Consumptive Public Supply Use}] + \\ & [\text{Total Non-Ag Consumptive Use from Surface Water}] + \\ & [\text{Other Non-Ag Consumptive Use from Ground Water}] \end{aligned}$$

### ***Adjusted Consumptive Domestic Use***

Adjusted Consumptive Domestic Use is an estimate of the consumptive uses from areas within the watershed that are served by private residential ground water wells and are served by septic systems.

Adjusted Consumptive Domestic Use is based on the Highlands estimate of residential well pumpage, when reduced by that portion that may be served by public sewer.

### ***Consumptive Public Supply Use***

Consumptive Public Supply Use is based on the Public Potable Supply pumpage for all public potable water facilities in the watershed that get their raw water supplies from ground water. The cumulative (raw) pumpage for these facilities was multiplied by 0.9 to account for the observed impact of maximum month pumping on annual base (stream) flows. The resultant is referred to as Adjusted Public Potable Supply.

To calculate Consumptive Public Supply, the Adjusted Public Potable Supply is reduced by the following amounts:

- Septic Return from Public Supply - This value represents the non-consumptive portion of public supply use that is returned to the watershed through septic systems.
- September Wastewater Return to Surface Water – This value represents the cumulative discharges from wastewater treatment plants, where the discharge is located in the watershed.

## **Water Use and Conservation Management Plan for HUC14 02030105060030**

### ***Total Non-Ag Consumptive Use from Surface Water***

Total Non-Ag Consumptive Surface Water Use is a measure of the cumulative consumptive uses from within the watershed where the source is taken from surface water.

This quantity often includes golf course irrigation.

### ***Other Non-Ag Consumptive Use from Ground Water***

Other Non-Ag Consumptive Uses include the following where the source is taken from ground water

- Golf course irrigation (where this use is distinguished from that supplied by surface water)
- Commercial facilities with metered usage (e.g. restaurants, businesses, and other typical non-residential uses)
- Industrial facilities with metered usage (e.g. manufacturing)
- Cooling water with metered usage
- Institutional facilities with metered usage (e.g. hospitals, schools)

### **Imported Septic Return**

Imported Septic Return occurs when an existing area served by public potable water supply, and the same areas are also served by septic systems. In addition, Imported Septic Return only applies when the source of public potable water supply under comes from outside the watershed.

### **Net Water Availability**

In most circumstances, Non-Ag Net Water Availability is referred to as simply Net Water Availability and is distinguished from Ag Net Water Availability.

(Non-Ag) Net Water Availability is the amount of Non-Ag Ground Water Availability remaining after deducting Total Non-Ag Consumptive Uses and adding Imported Septic Return.

Net Water Availability cannot exceed Ground Water Availability, whether it is Ag or Non-Ag.

When the watershed has been designated as a Conservation Zone, Ag Net Water Availability will be calculated.

### **Surplus for Potential Use**

When Imported Septic Return is sufficiently large, the calculation of (Non-Ag) Net Water Availability can exceed Non-Ag Ground Water Availability. In such cases, (Non-Ag) Net Water Availability is set to Non-Ag Ground Water Availability and the remaining portion is allocated under Surplus for Potential Use.

## Appendix B – Monitoring Form

Appendix B includes a sample Water Use and Conservation Management Monitoring Form. See “Monitoring” section (pg. 38) for instructions.



# Water Use and Conservation Management Plan for HUC14 02030105060030

## Water Use and Conservation Management Plan (WUCMP) Monitoring Form

### Sparta Township

Year:	2012	Prepared By:					
HUC14:	02040105040050	Title:					
Name:	Sparta Junction tribs	Date:					
Ground Water Availability (mgd):	0.1008						
Baseline Net Water Availability (mgd):	-0.6163						
<b>Diversion / Recharge Inventory</b>							
Owner	Type		No. of Wells / Intakes / Discharges	MGD <sup>1</sup>	Adjusted MGD	Total C/D Water Use (mgd)	Net Water Availability (NWA; mgd)
	Recharge or Withdrawal	GW or SW					
<i>Wells / Intakes</i>						<b>0.8390</b>	<b>-0.7317</b>
Domestic Supply (private wells)	Withdrawal	Ground Water	100	0.1418	0.1277		
Sparta Township	Withdrawal	Ground Water	8	1.2958	1.1662		
Diamond Sand and Gravel	Withdrawal	Ground Water	1	0.0051	0.0046		
Skyview Golf Club	Withdrawal	Ground Water	2	0.0084	0.0075		
Limecrest Quarry Developers/Crest Aggregates	Withdrawal	Ground Water	1	0.0000	0.0000		
Diamond Sand and Gravel	Withdrawal	Ground Water	1	0.0242	0.0217		
P Michelotti & Sons	Withdrawal	Ground Water	1	0.0000	0.0000		
Skyview Golf Club	Withdrawal	Surface Water	1	0.0030	0.0030		
Diamond Sand and Gravel	Withdrawal	Surface Water	1	0.0867	0.0867		
Limecrest Quarry Developers/Crest Aggregates	Withdrawal	Surface Water	3	0.0000	0.0000		
P Michelotti & Sons	Withdrawal	Surface Water	1	0.0000	0.0000		
<i>Wastewater Discharge</i>							
On-site Wastewater Disposal Systems (septic)	Recharge	Ground Water	100	0.3871	0.3937		

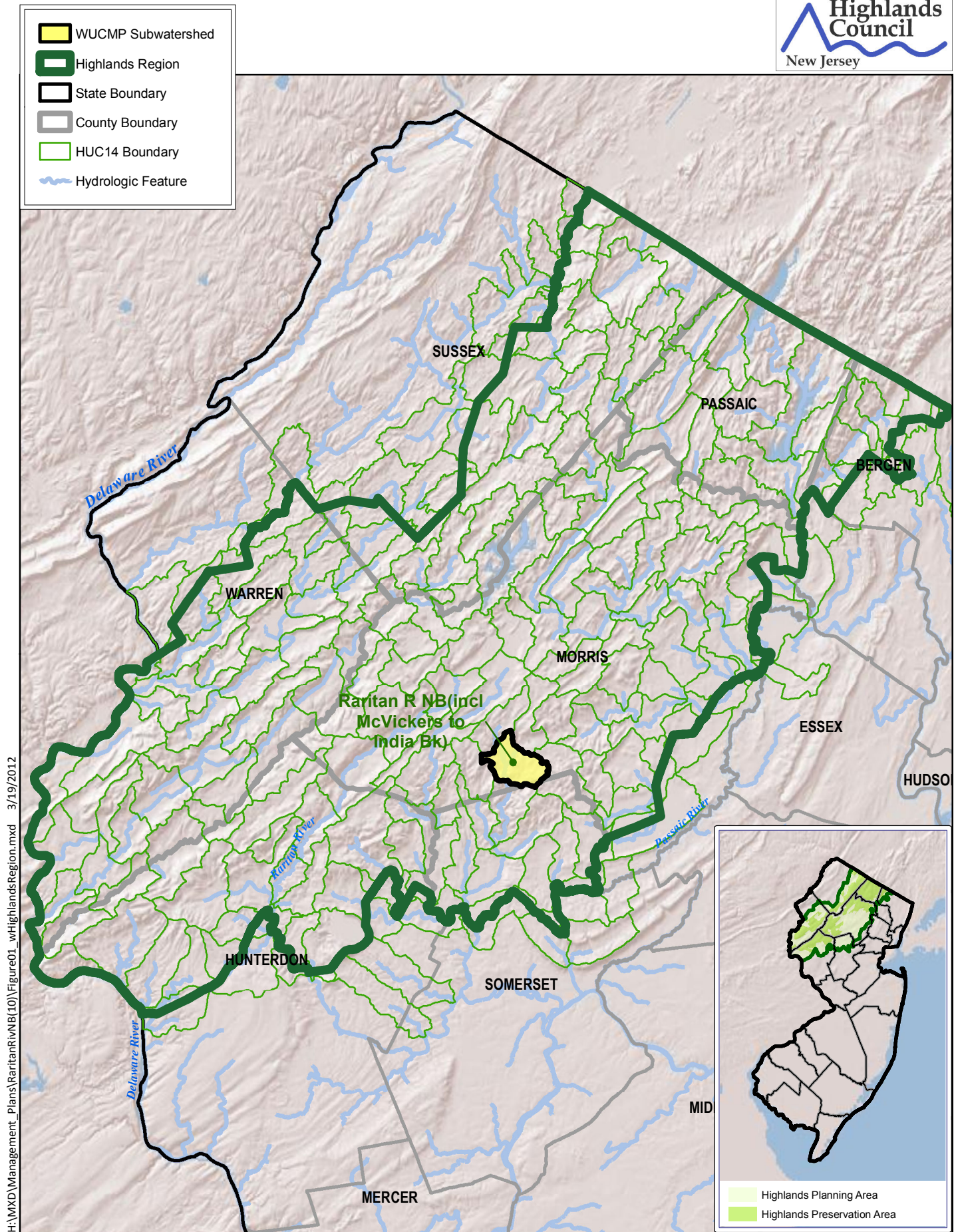
# Water Use and Conservation Management Plan for HUC14 02030105060030

## Water Use and Conservation Management Plan (WUCMP) Monitoring Form

### *Sparta Township*

<b>Year:</b>	<b>2012</b>	<b>Prepared By:</b>				
<b>HUC14:</b>	02040105040050	<b>Title:</b>				
<b>Name:</b>	Sparta Junction tribs	<b>Date:</b>				
<b>Ground Water Availability (mgd):</b>	0.1008					
<b>Baseline Net Water Availability (mgd):</b>	-0.6163					
<b>Mitigation Strategies</b>						
<b>Owner</b>	<b>Type</b>	<b>Year Installed</b>	<b>Anticipated Benefit (gpd)</b>	<b>Adjustment Required to NWA? (Y/N)<sup>2</sup></b>	<b>Revised NWA (mgd)</b>	<b>Planned Mitigation Strategies for Next Year</b>
					-0.7317117	
					-0.7317117	
<b>Monitoring Sites</b>						
<b>Stream</b>	<b>Gage Location</b>	<b>Year Installed</b>	<b>Collection Frequency</b>	<b>Minimum September Flow of Record (cfs)</b>	<b>Minimum September Flow (cfs)</b>	






1. Maximum withdrawal from June, July or August and associated return for groundwater (must be consistent month within HUC). September withdrawal or return for surface water.
2. For mitigation strategies that are not directly related to water use (rate structures, water conservation structures). Stormwater BMPs are an example.
3. Use one table per HUC14.



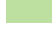






**Figure 1**  
**Highlands Region and**  
**WUCMP Location**

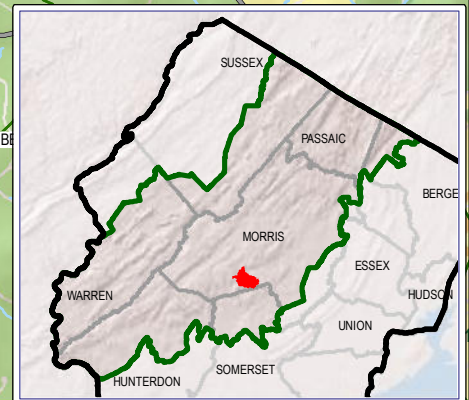
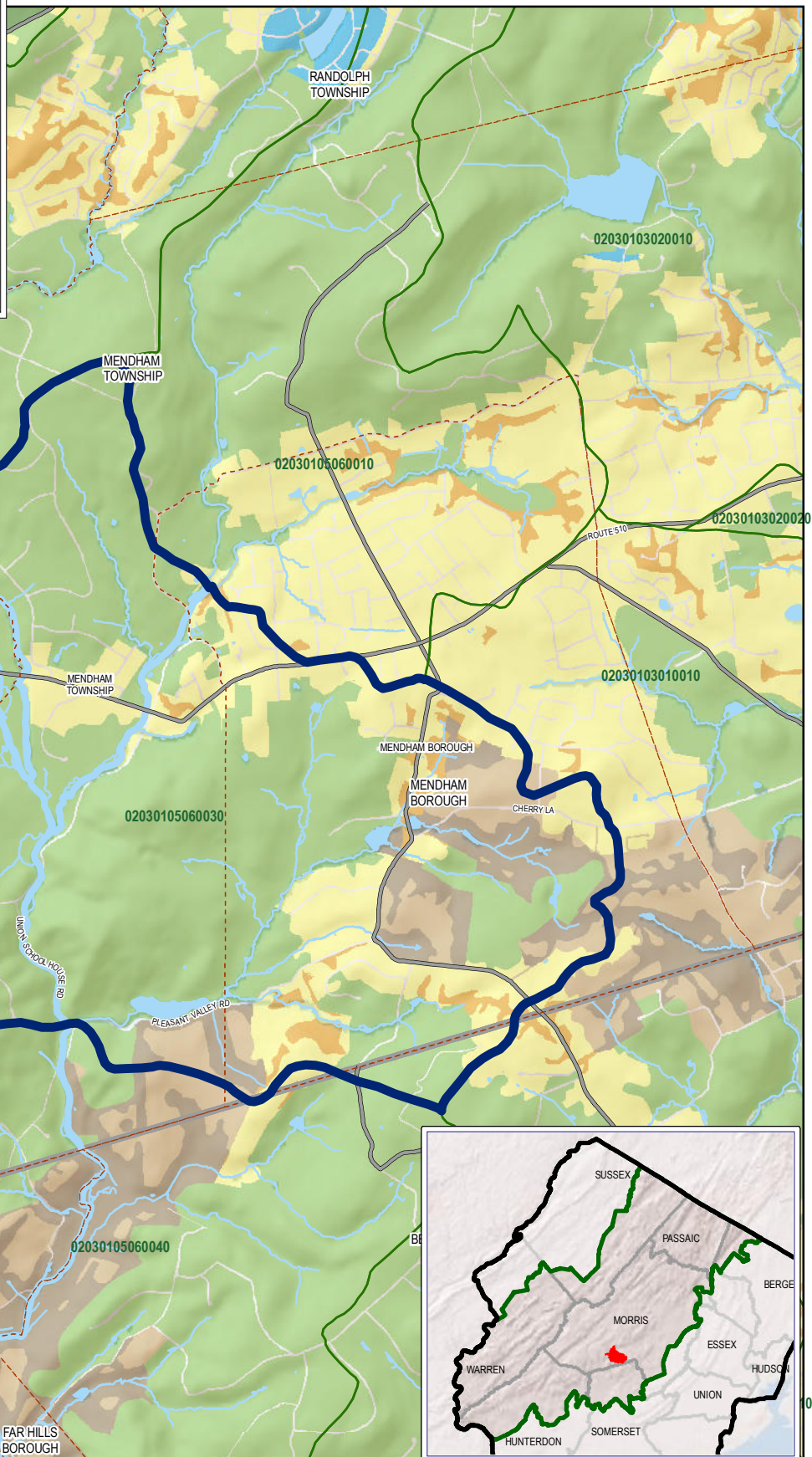
HUC14	Subwatershed Name
02030105060030	Raritan R NB (incl McVickers to India Bk)



-  Subwatershed Boundary
-  HUC14 Boundary
-  Municipal Boundary
-  Hydrologic Feature
-  County Boundary

**Land Use Capability Zone**

-  Protection Zone
-  Conservation Zone
-  Existing Community Zone
-  Existing Community - Environmentally Constrained
-  Conservation - Environmentally Constrained
-  Lake Community
-  Wildlife Management










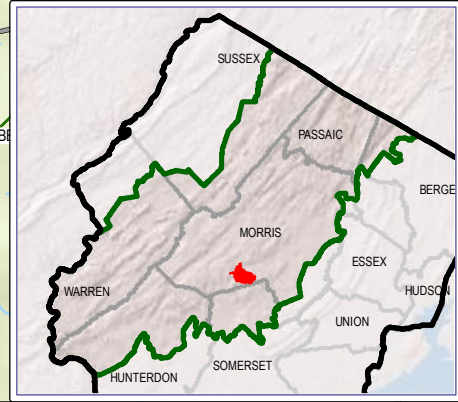
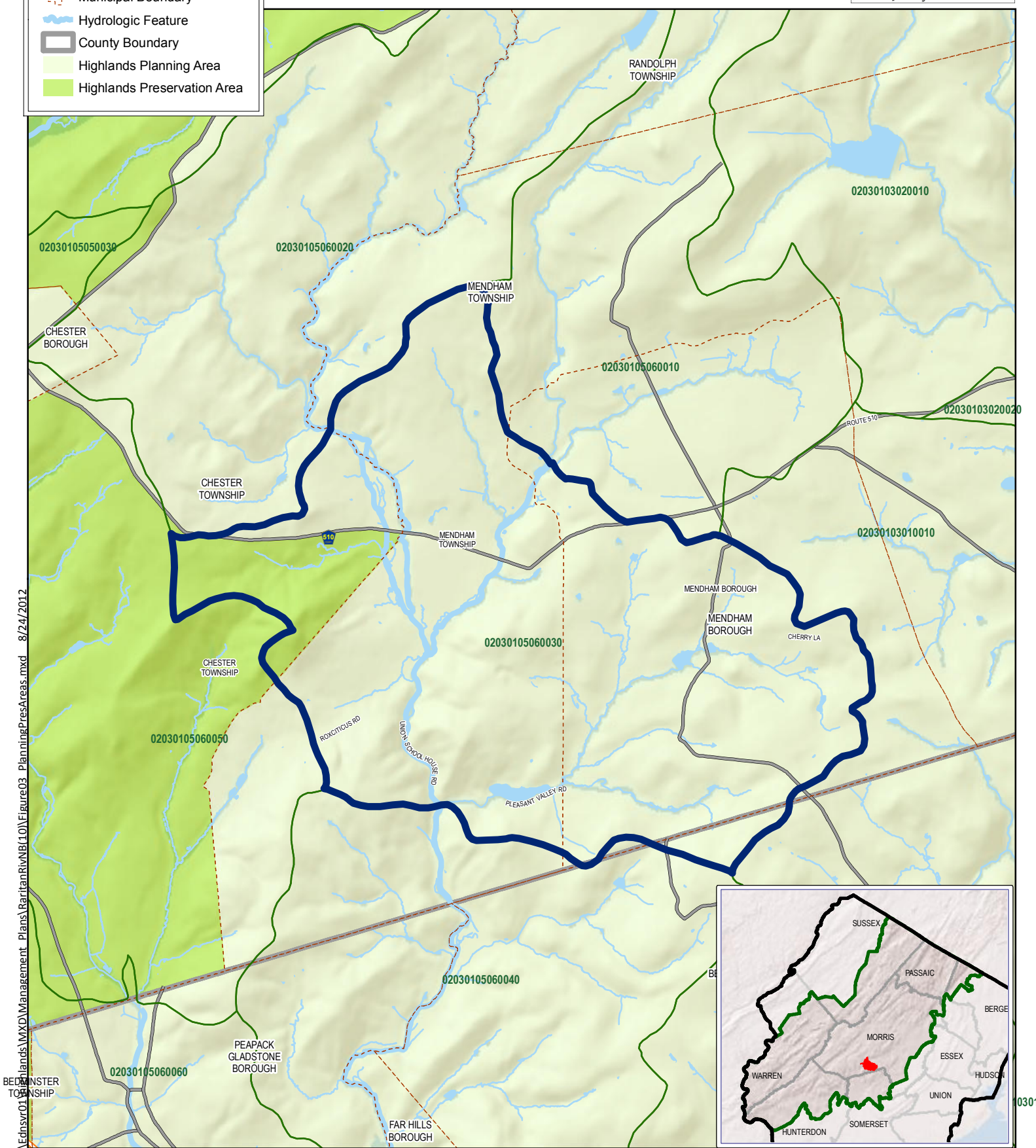
0 0.25 0.5 1 Miles  
0 0.25 0.5 1 Kilometers



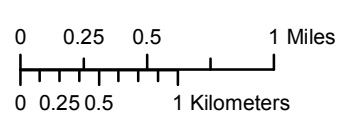
**Figure 2**  
**Land Use Capability Zone**



-  Subwatershed Boundary
-  HUC14 Boundary
-  Municipal Boundary
-  Hydrologic Feature
-  County Boundary
-  Highlands Planning Area
-  Highlands Preservation Area

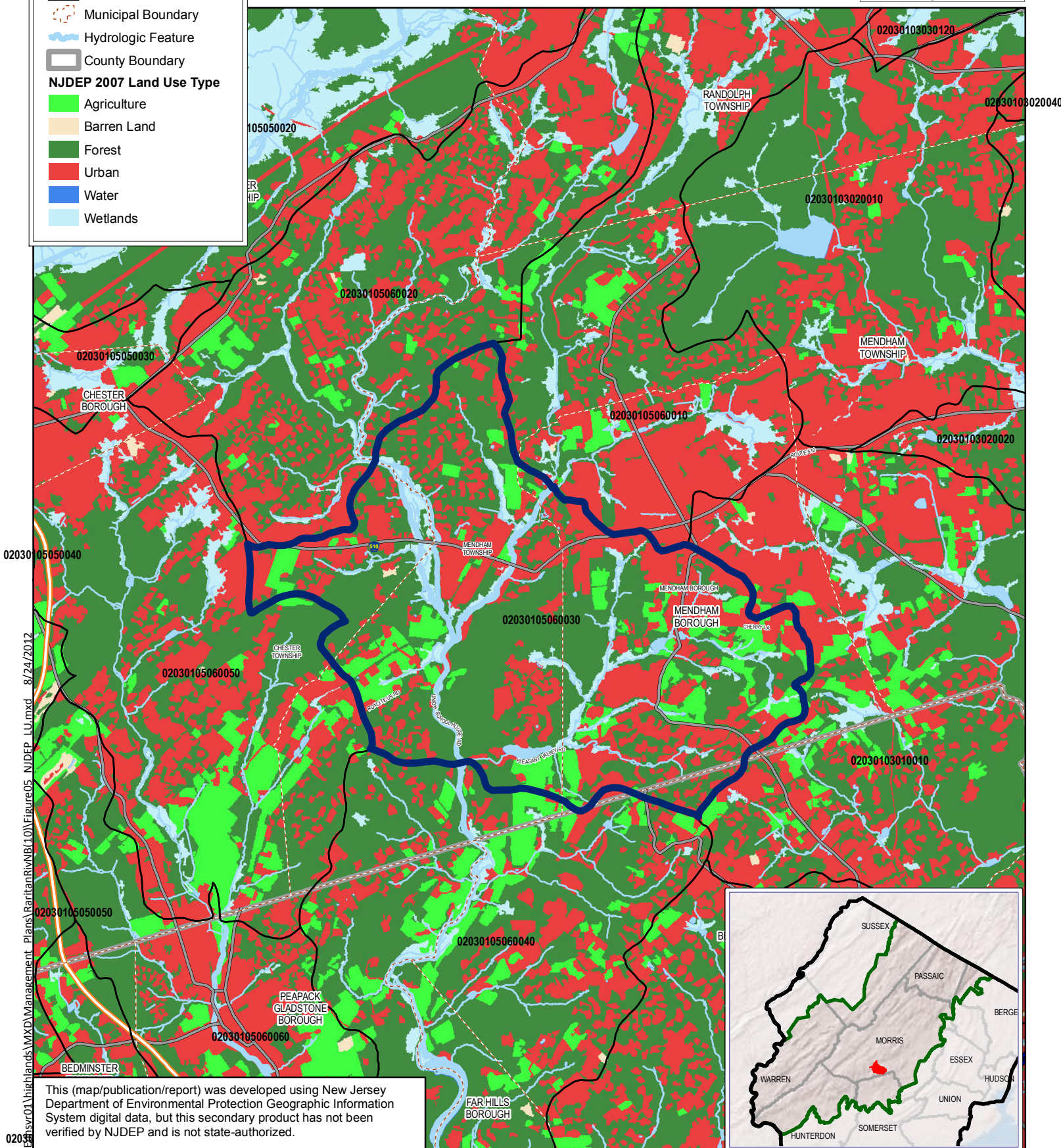
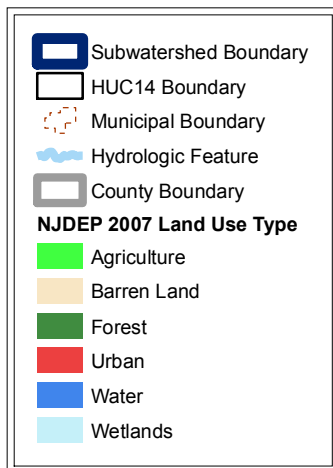


\\Ednsrv01\Management\_Plan\Plans\RaritanRivNB\10\Figure03\_PlanningPresAreas.mxd 8/24/2012



**Figure 3**  
**Planning and Preservation Areas**



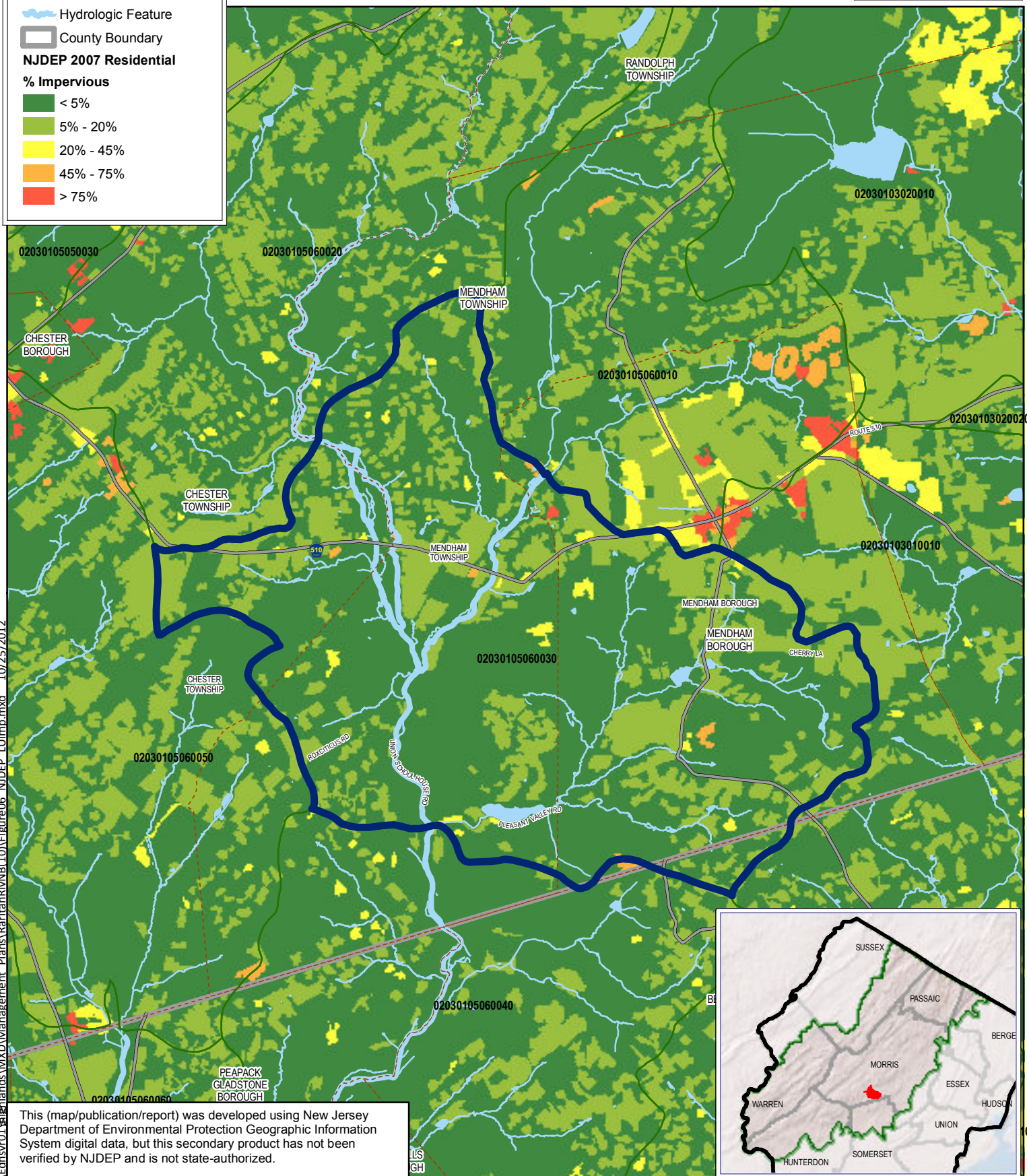


This (map/publication/report) was developed using New Jersey Department of Environmental Protection Geographic Information System digital data, but this secondary product has not been verified by NJDEP and is not state-authorized.

**Figure 4**  
**Land Use**



- Subwatershed Boundary
  - HUC14 Boundary
  - Municipal Boundary
  - Hydrologic Feature
  - County Boundary
- NJDEP 2007 Residential % Impervious**
- < 5%
  - 5% - 20%
  - 20% - 45%
  - 45% - 75%
  - > 75%






This (map/publication/report) was developed using New Jersey Department of Environmental Protection Geographic Information System digital data, but this secondary product has not been verified by NJDEP and is not state-authorized.

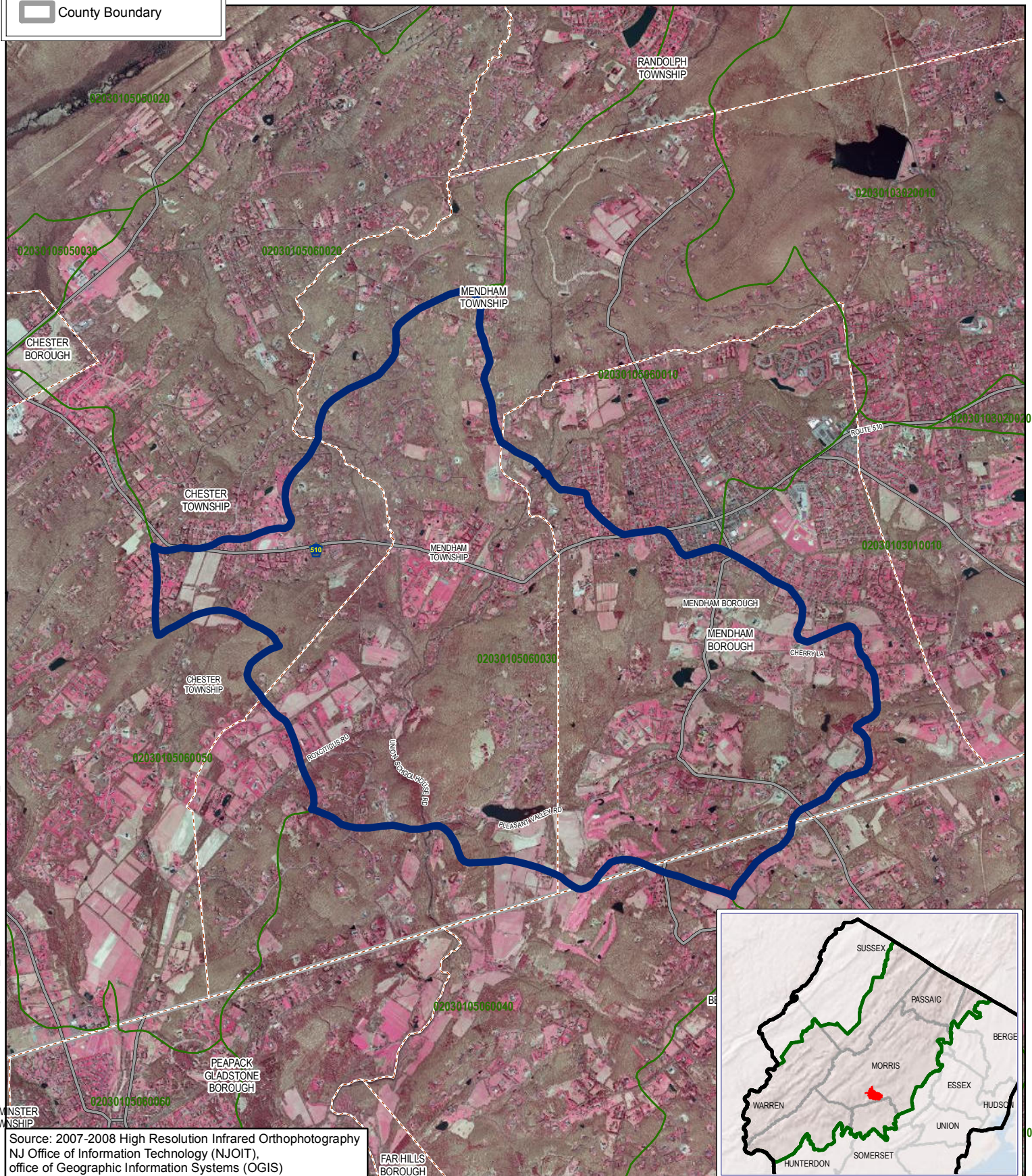
0 0.25 0.5 1 Miles  
0 0.25 0.5 1 Kilometers



**Figure 5**  
**Impervious Land Use**



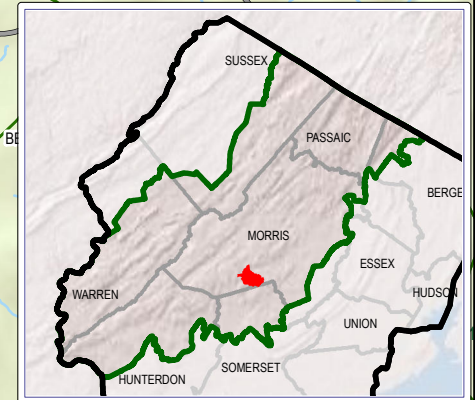
-  Subwatershed Boundary
-  Municipal Boundary
-  County Boundary



Source: 2007-2008 High Resolution Infrared Orthophotography  
NJ Office of Information Technology (NJGIT),  
Office of Geographic Information Systems (OGIS)

**Figure 6**  
**2007-2008 Aerial**

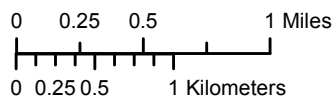
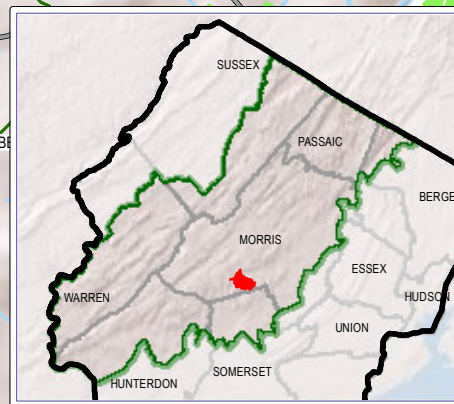
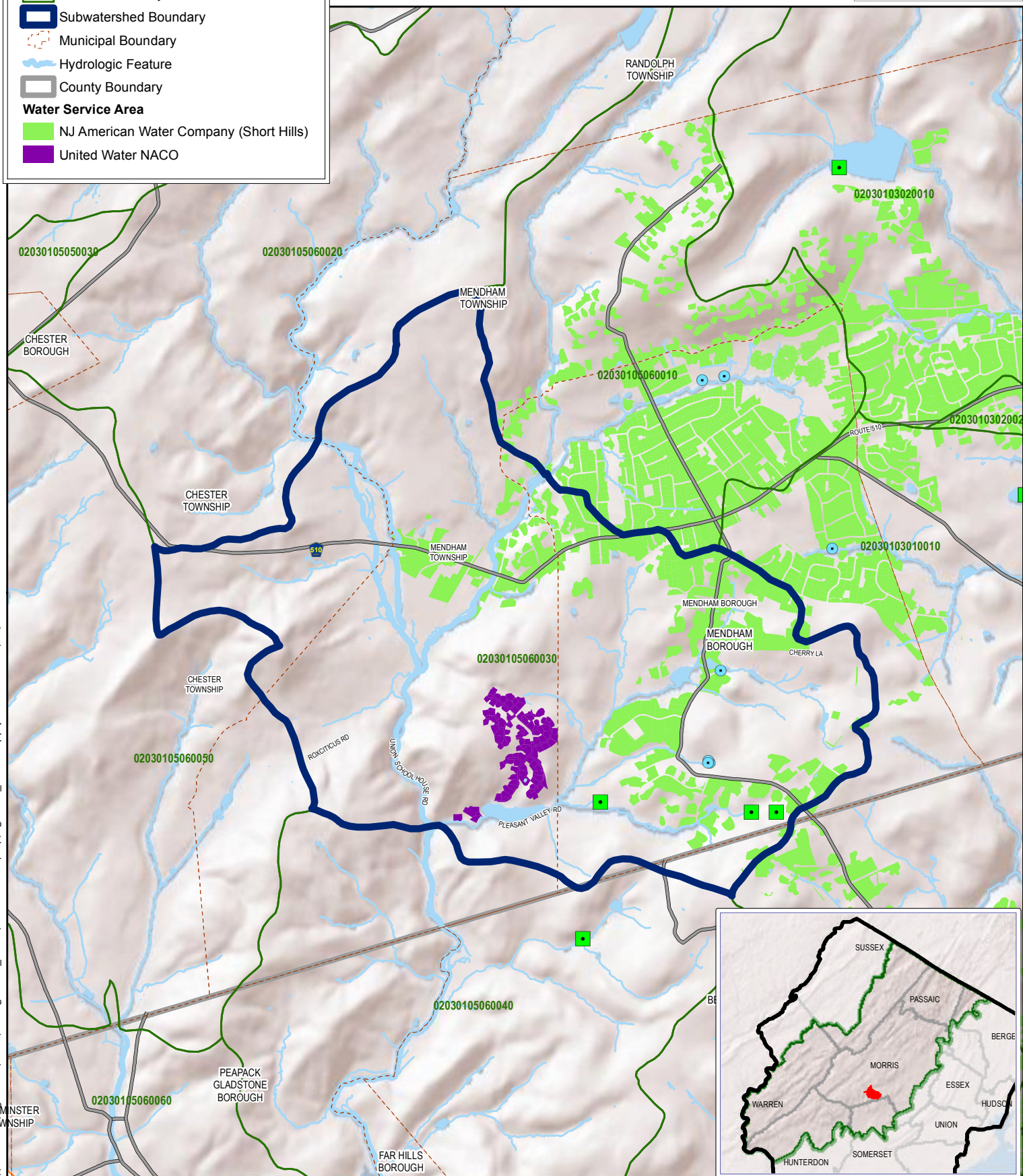
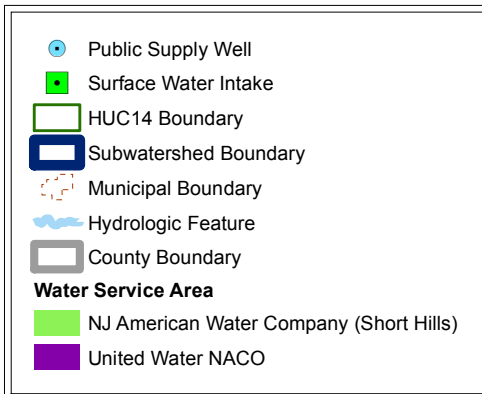




**Figure 7**  
**USGS Stream Gage Sites**

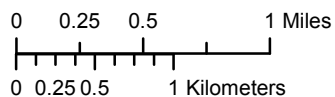
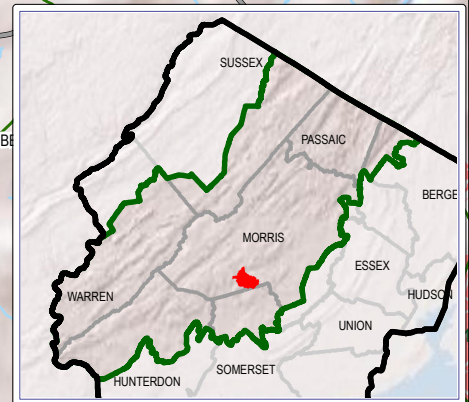
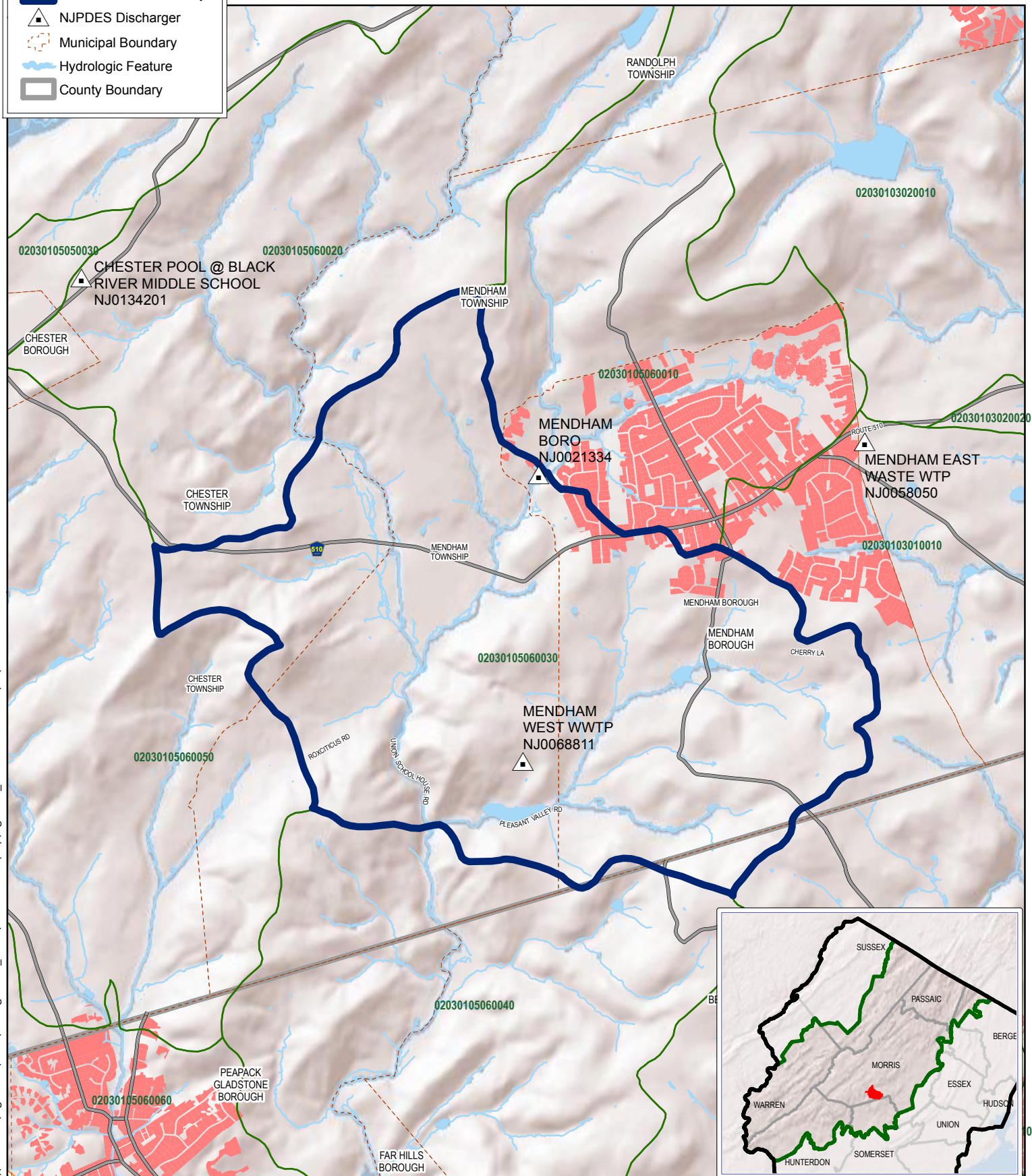
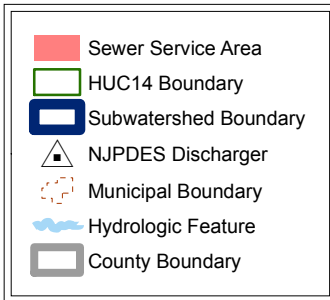






**Figure 9**  
**Public Supply Wells, Surface Water Intakes**  
**and Water Service Areas**





HUC14	Subwatershed Name
0021334	Mendham Boro
0068811	Mendham West WWTP

**Figure 10**  
**Sewer Service Area**  
**and NJPDES Dischargers**