

Public Hearing

Allamuchy Township Petition for Plan Conformance

Introduction to Allamuchy Township



Allamuchy Township

Background Statistics



- Incorporated: 1873
- Population 2010: 4,323
- Land Area: 12,793 acres/
19.99 sq. mi.
- Preserved Lands: 7,723 acres (60%)
- Wetlands: 3,180 acres (25%)
- Total Forest: 7,697 acres (59%)

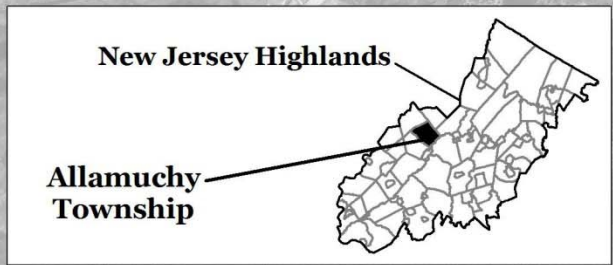
Allamuchy Township

Significant Highlands Statistics

- Planning Area Lands: 7,695 acres – 59%
- Preservation Area Lands: 5,278 acres – 41%

- Protection Zone: 6,603 acres – 51%
- Conservation Zone: 5,596 acres – 43%
- Existing Community Zone: 499 acres – 3.9% (Roads 2.1%)

- Forest Resource Area: 9,999 acres – 77%
- Critical Wildlife Habitat: 8,245 acres – 64%
- Highlands Open Water Protection: 7,531 acres – 58%



New Jersey Highlands

Allamuchy Township

Green Township

Frelinghuysen Township

Byram Township

Allamuchy Township

Independence Township

Mount Olive Township

Hackettstown Town



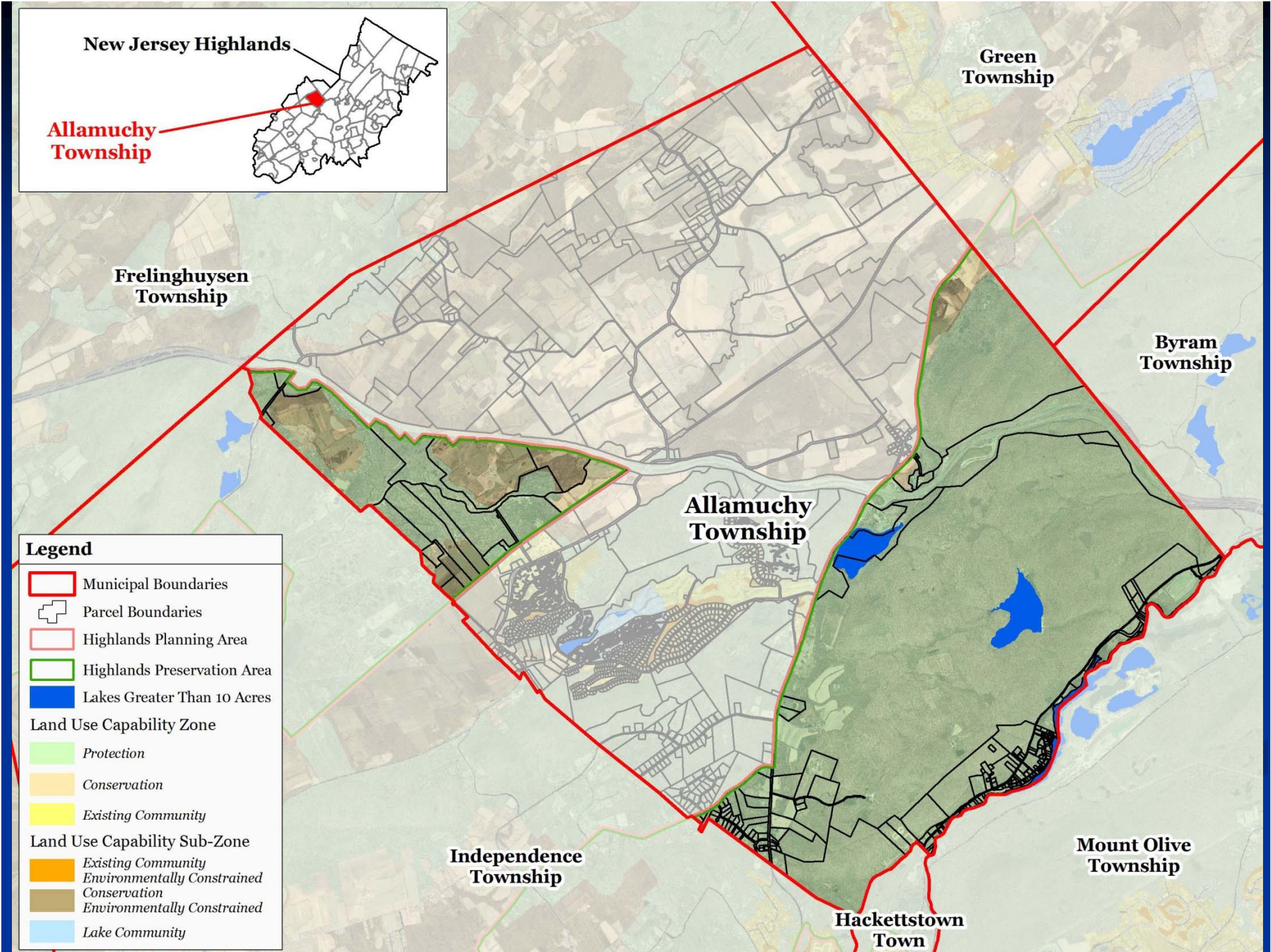
Allamuchy Township - 1930

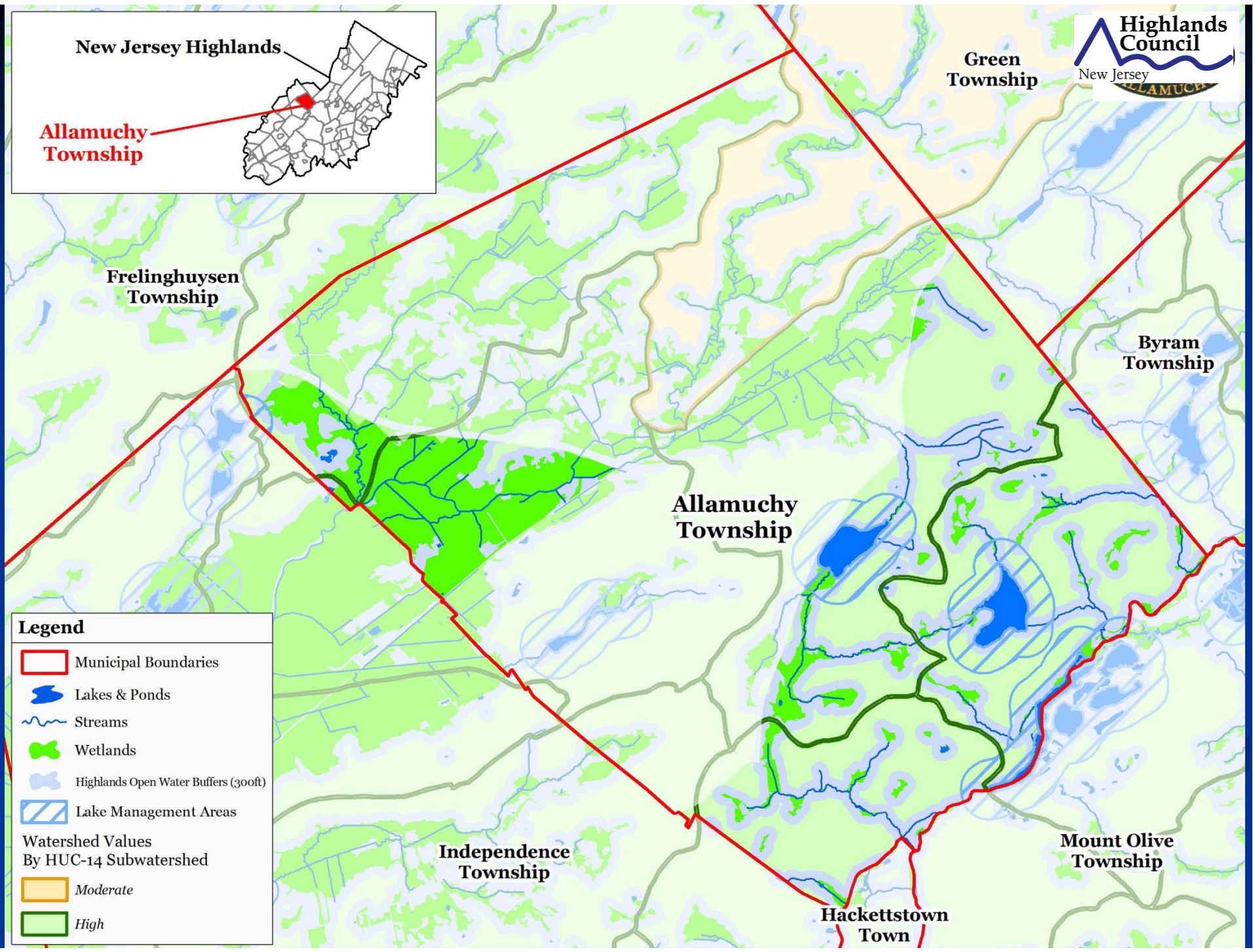
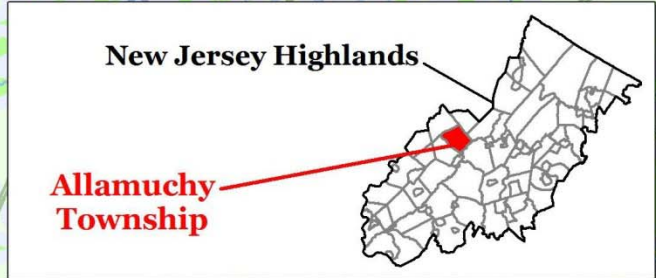
Allamuchy Township

Background Statistics – Land Use



NJDEP Land Use/Land Cover (2007)	Plan	Pres	Percent
Residential (Single & Multi Family)	755	117	6.7%
Commercial (Retail)	32	7	0.3%
Industrial & Transportation & Utilities	98	77	1.4%
Agriculture (Crops & Plantations)	1,947	280	17.2%
Recreational Lands (Public & Private)	139	59	1.5%
Extractive Mining	8	0	0.1%
Other Urban or Built-Up Land	85	38	0.9%
Subtotal Developed Lands	3,063	578	28.1%
Mixed Forest	2,157	3,373	42.6%
Shrub & Scrub	177	197	2.9%
Mixed Wetlands	2,210	969	24.5%
Barren Lands	22	2	0.2%
Water	65	159	1.7%
Subtotal Natural Lands	4,632	4,700	71.9%
Total	7,695	5,278	100.0%





Legend

- Municipal Boundaries
- Lakes & Ponds
- Streams
- Wetlands
- Highlands Open Water Buffers (300ft)
- Lake Management Areas

Watershed Values
By HUC-14 Subwatershed

- Moderate
- High

New Jersey Highlands

Allamuchy Township



Green Township



Frelinghuysen Township

Byram Township

Allamuchy Township

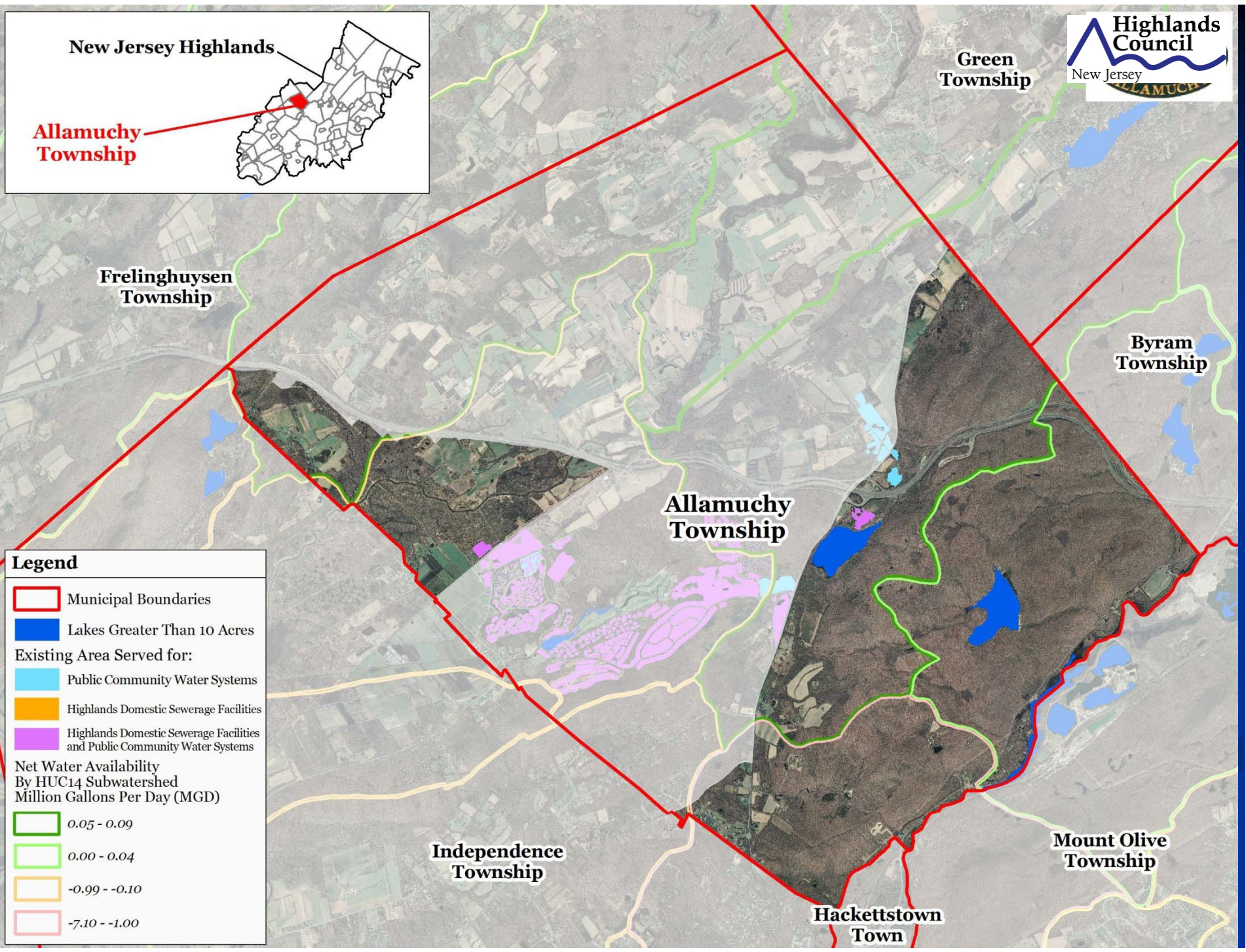
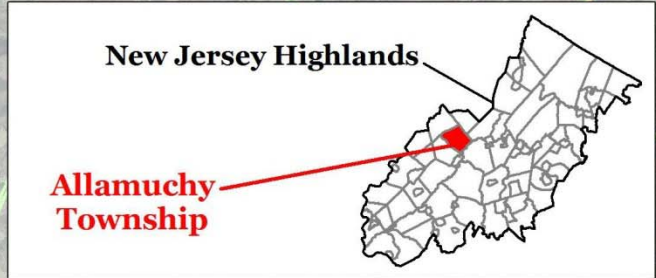
Legend

-  Municipal Boundaries
-  Lakes Greater Than 10 Acres
- Steep Slope Protection Area
 -  Severely Constrained
 -  Moderately Constrained
 -  Constrained/Limited Constrained

Independence Township

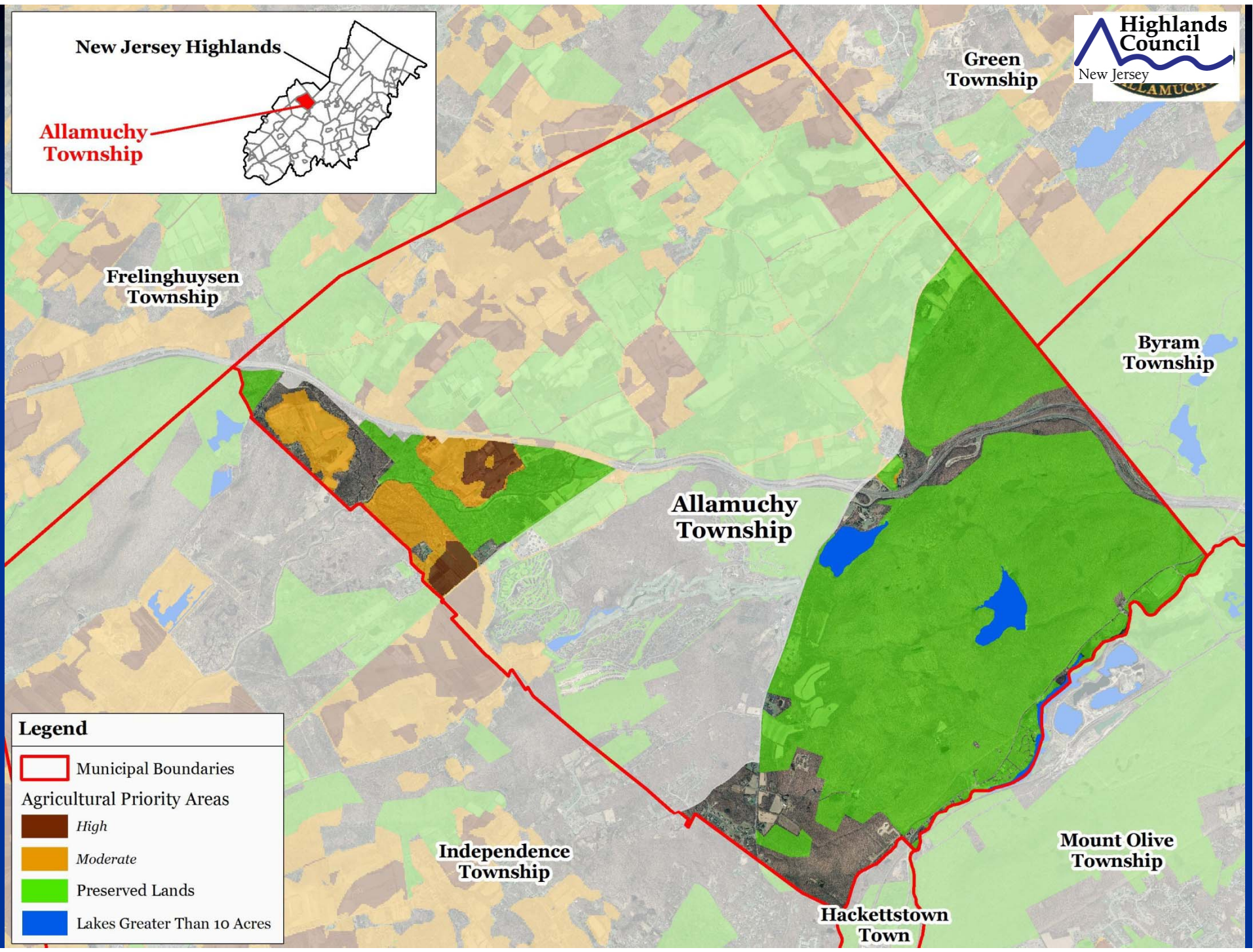
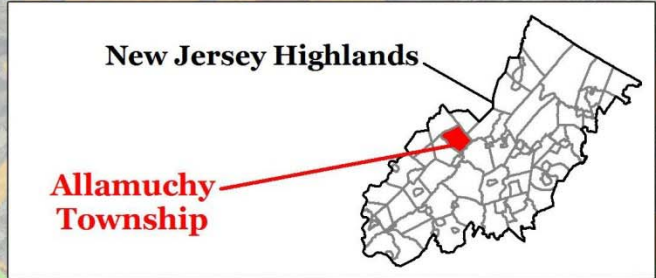
Hackettstown Town

Mount Olive Township



Legend

- Municipal Boundaries
- Lakes Greater Than 10 Acres
- Existing Area Served for:
- Public Community Water Systems
- Highlands Domestic Sewerage Facilities
- Highlands Domestic Sewerage Facilities and Public Community Water Systems
- Net Water Availability By HUC14 Subwatershed Million Gallons Per Day (MGD)
- 0.05 - 0.09
- 0.00 - 0.04
- 0.99 - -0.10
- 7.10 - -1.00



Legend

- Municipal Boundaries
- Agricultural Priority Areas
 - High
 - Moderate
- Preserved Lands
- Lakes Greater Than 10 Acres

Plan Conformance Modules

Petition Requirements	RMP Consistent	Specific Issues
Modules 1-2 Municipal Build-Out Report	X	None
Module 3 Housing Element/Fair Share Plan	X	None
Module 4 Environmental Resource Inventory	X	None
Module 5 Highlands Element	X	None
Module 6 Land Use Ordinance	X	None
Module 7 Petition for Plan Conformance	X	None

Allamuchy Township's Petition for Plan Conformance

Public Comments Received

- The public comment period on Allamuchy's Petition opened November 14, 2011 and closed November 28, 2011.

Public Comments were received from:

- Helen Heinrich (NJ Farm Bureau), supporting funding for an Agricultural Retention Plan for the municipality, and raising concern about specific Right to Farm language.
- Erica Van Auken (NJ Highlands Coalition), supporting the Petition and funding for Stream Restoration Planning, and recommending that the municipality consider conforming for the Planning Area as well.

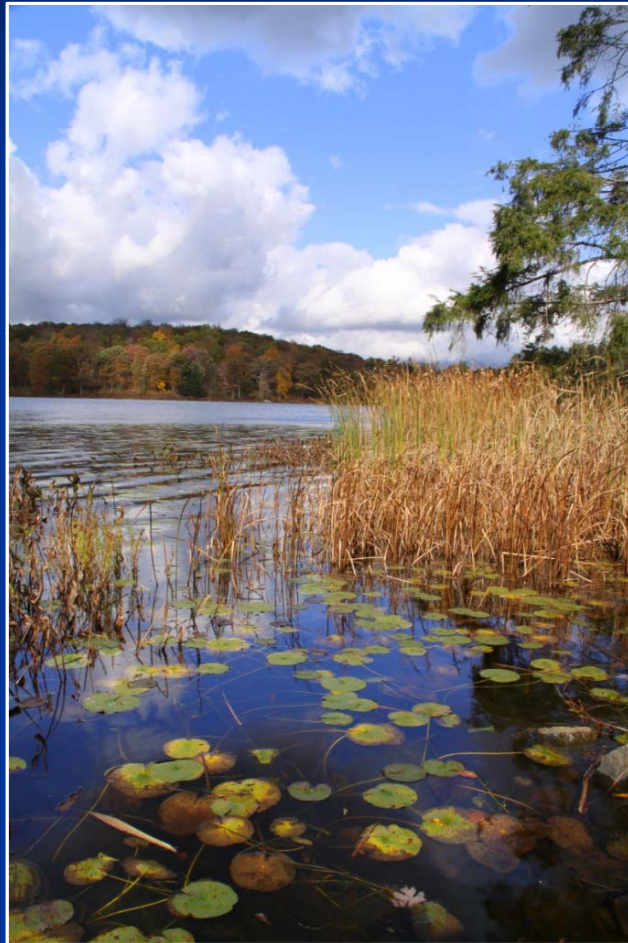
Recommendation

Allamuchy Township's Petition for Plan Conformance

Staff Recommendation: **APPROVE (LISTING MAJOR CONDITIONS)**

- Adoption of Checklist Ordinance
- Adoption of Completed Highlands Environmental Resource Inventory, Master Plan Element, and Land Use Ordinance
- Compliance with Fair Housing Act (Plan Submitted for Certification)
- Water Use and Conservation Management Plan
- Habitat Conservation and Management Plan
- Stream Corridor Protection & Restoration Plan
- Agriculture Retention Master Plan Element
- Lake Restoration Plan

Council Deliberation



Allamuchy Township