

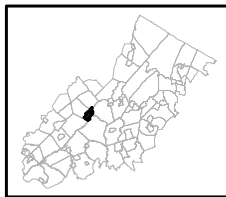


Figure 1: Preservation Area



-  Preservation Area
-  Municipal Boundaries

Hackettstown Town

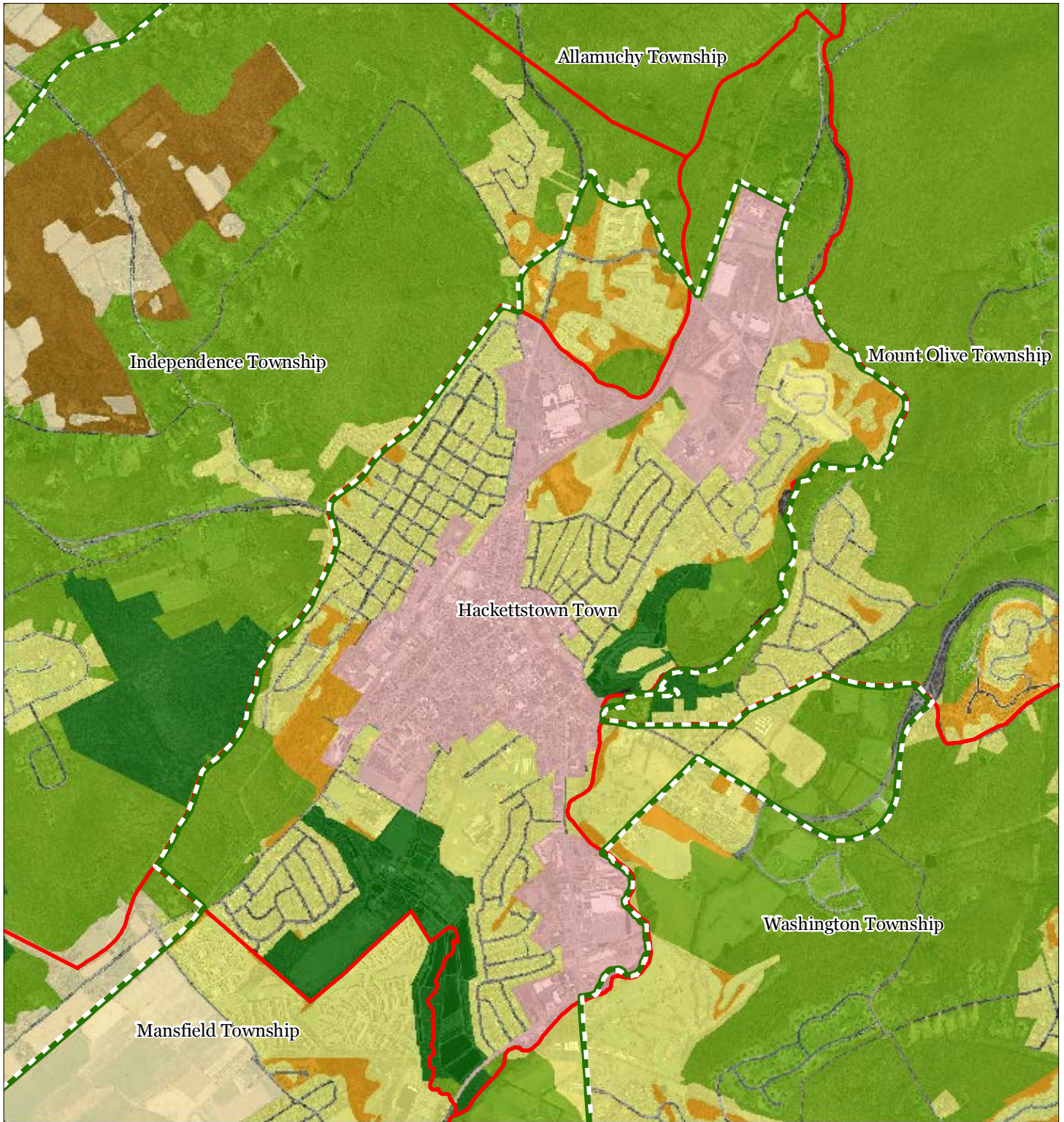


1 inch = 0.443 miles



August 2011

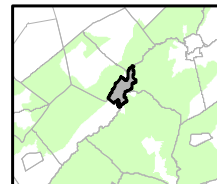
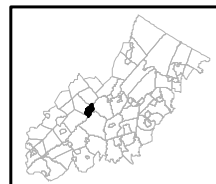
Figure 2: Land Use Capability Map Zones



Regional Master Plan Overlay Zone Designation

- | | |
|--|---------------------------------------|
| Protection | Lakes Greater Than 10 acres |
| Conservation | Preservation Area |
| Existing Community | Municipal Boundaries |
| Sub-Zone | |
| Existing Community Environmentally Constrained | Highlands Center |
| Conservation Environmentally Constrained | Highlands Environmental Resource Site |
| Lake Community | |
| Wildlife Management | |

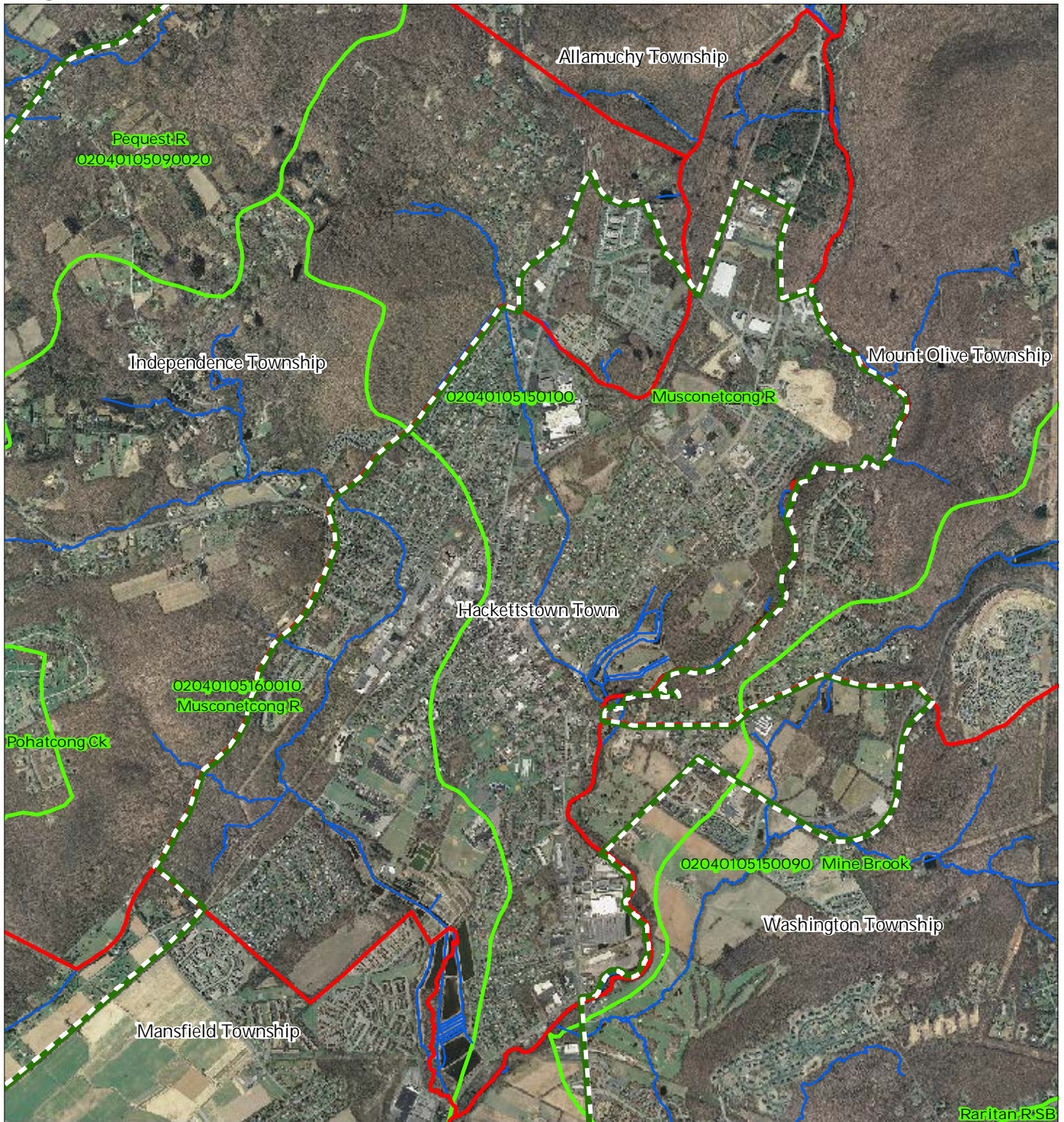
Hackettstown Town







1 inch = 0.443 miles

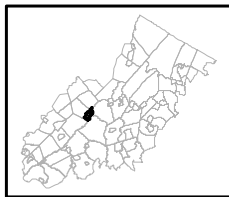


Figure 3: HUC 14 Boundaries



-  HUC 14 Subwatersheds
-  Stream Centerlines
-  Preservation Area
-  Municipal Boundaries

Hackettstown Town

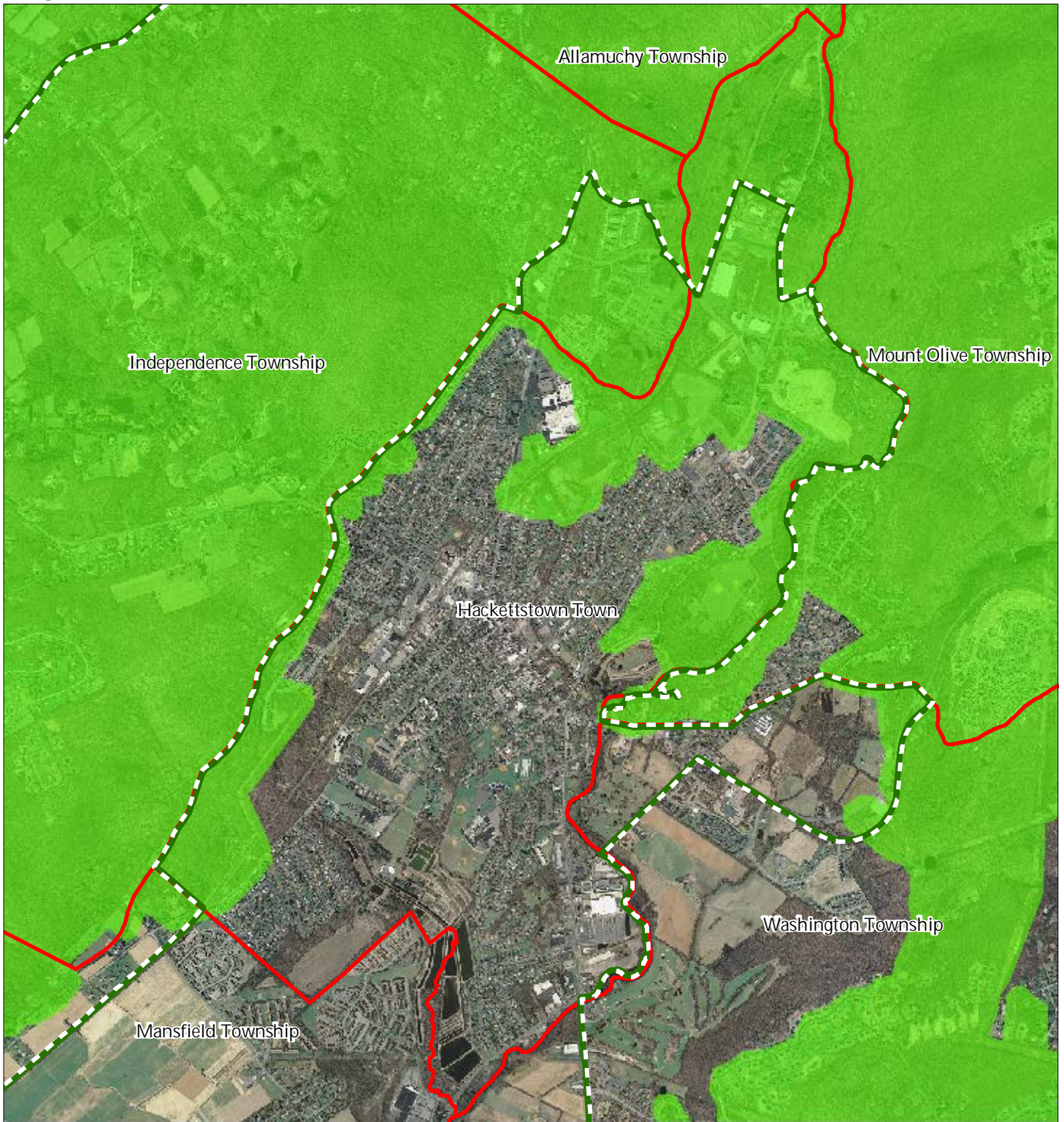





1 inch = 0.443 miles



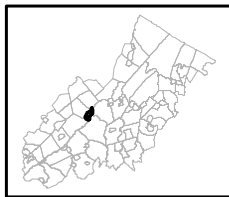
August 2011

Figure 4: Forest Resource Area



-  Forest Resource Area
-  Preservation Area
-  Municipal Boundaries

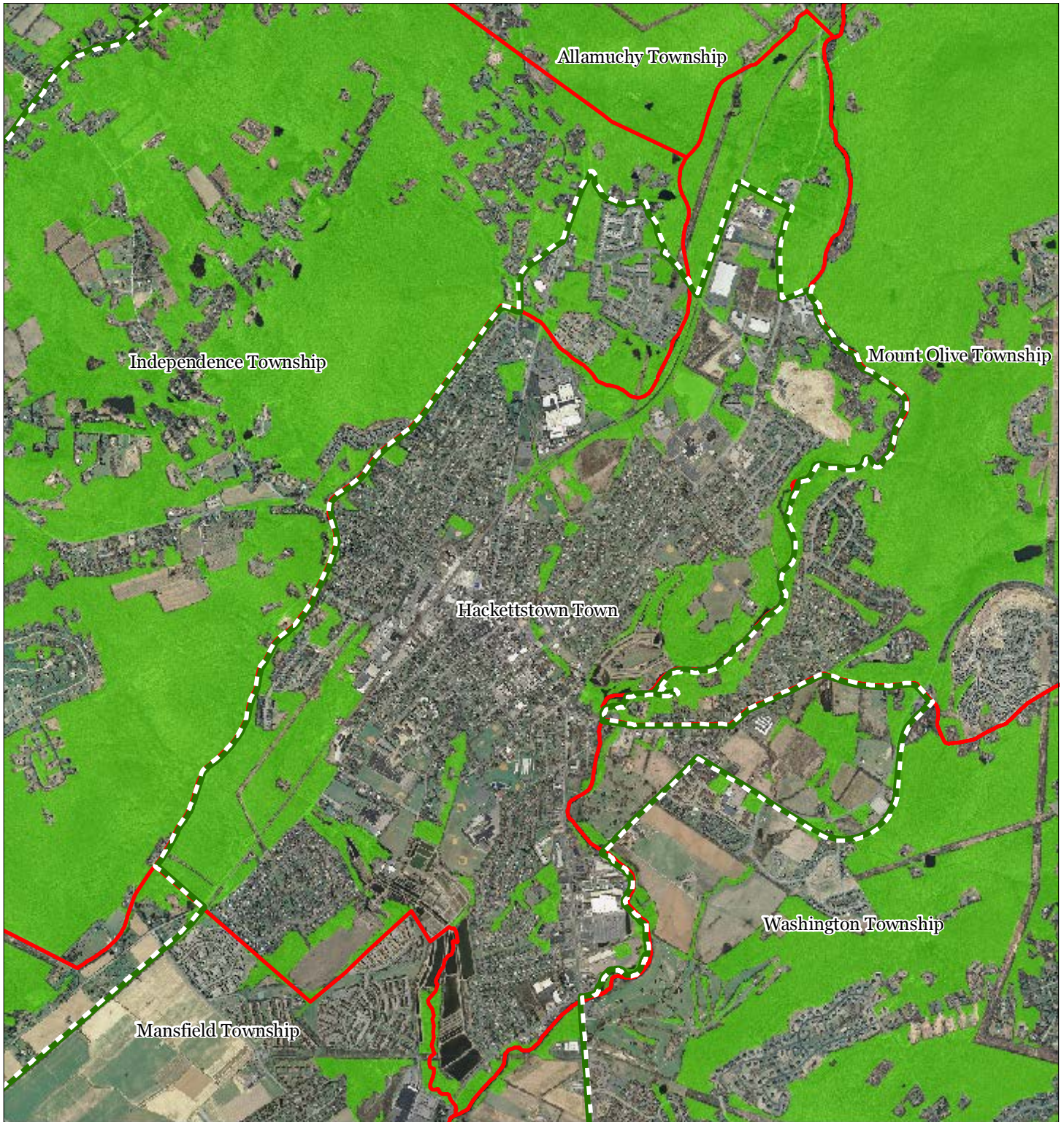
Hackettstown Town






1 inch = 0.443 miles

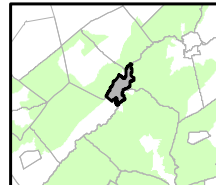
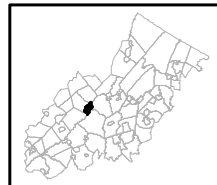


Figure 5: Total Forest Area



-  Forested Areas
-  Preservation Area
-  Municipal Boundaries

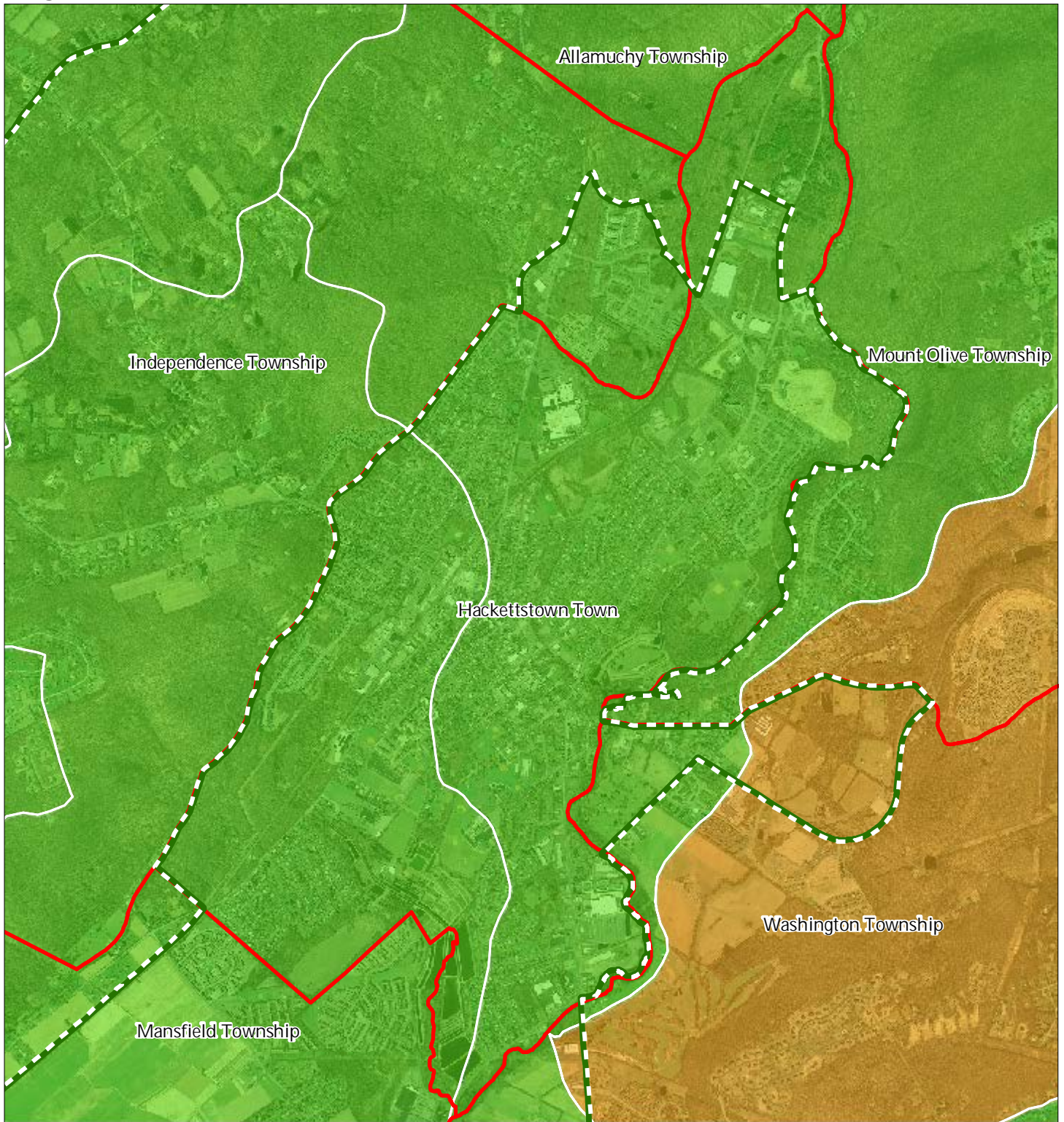
Hackettstown Town








1 inch = 0.443 miles



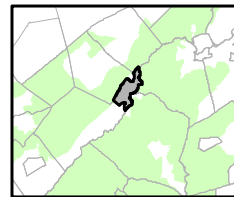
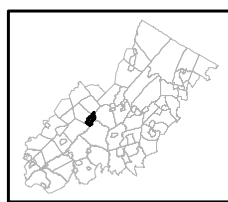
Figure 6: Forest Subwatersheds



Forest Integrity by HUC14 Subwatershed

-  *Low*
-  *Moderate*
-  *High*
-  Preservation Area
-  Municipal Boundaries

Hackettstown Town

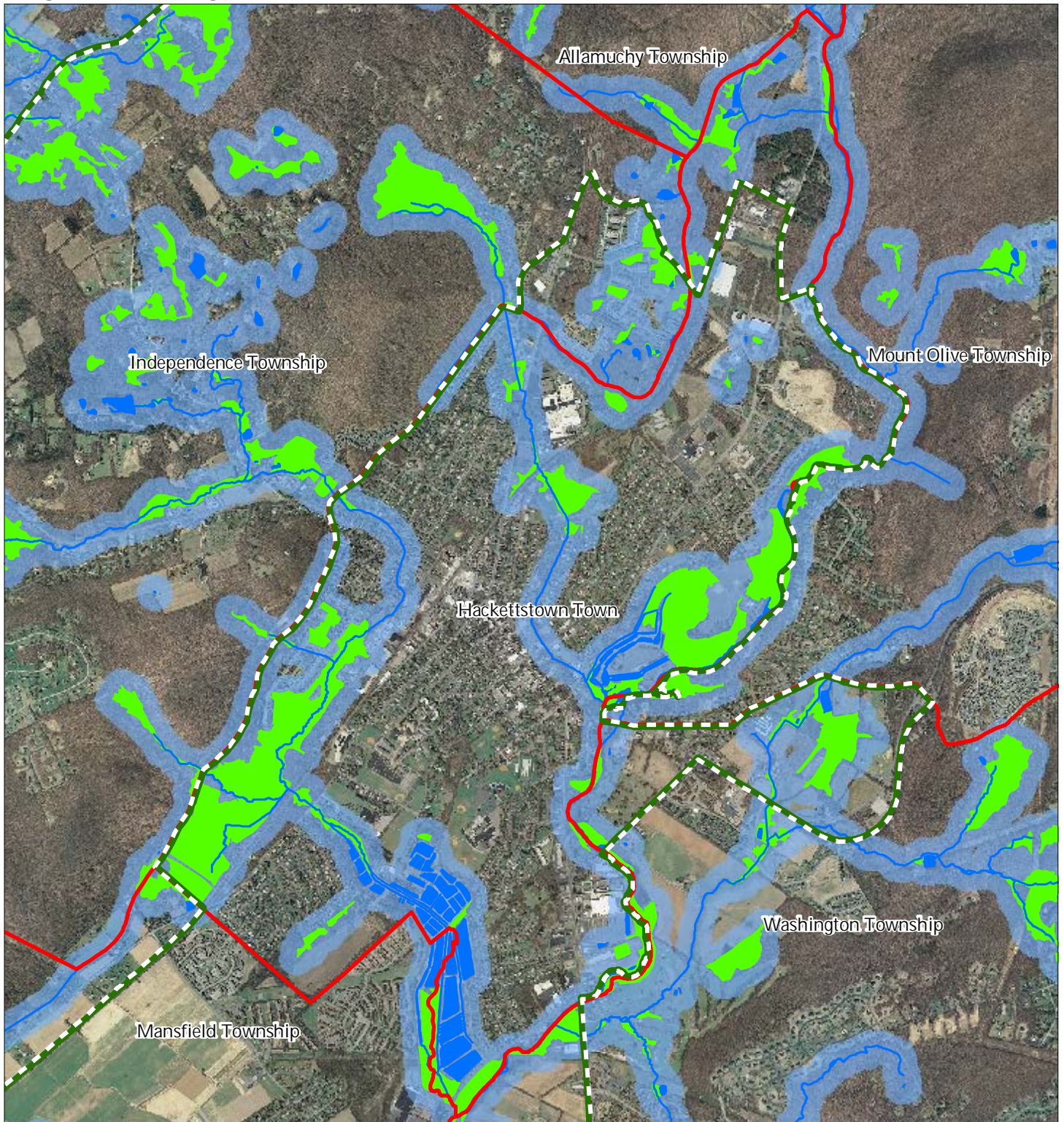


1 inch = 0.443 miles



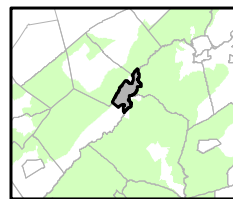
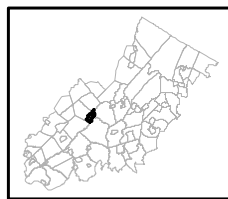
August 2011

Figure 7: Highlands Open Waters



-  Highlands Open Water Buffers (300ft)
-  Streams
-  Wetlands
-  Lakes & Ponds
-  Preservation Area
-  Municipal Boundaries

Hackettstown Town

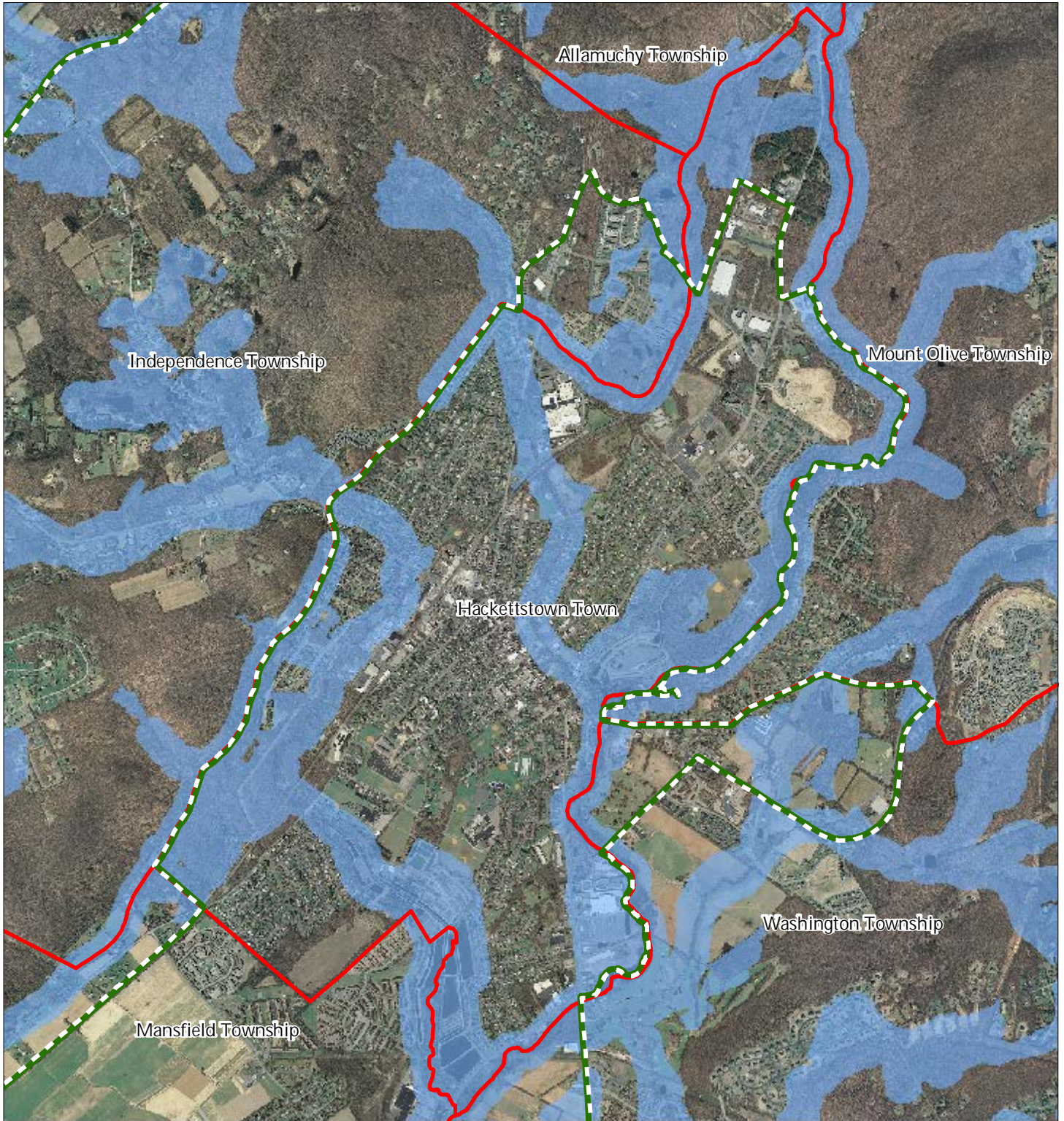


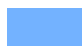


1 inch = 0.443 miles



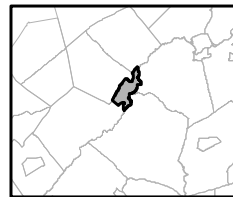
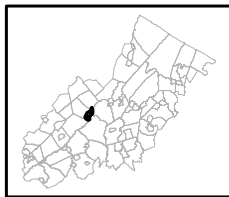
August 2011

Figure 8: Highlands Riparian Areas



-  Riparian Area
-  Preservation Area
-  Municipal Boundaries

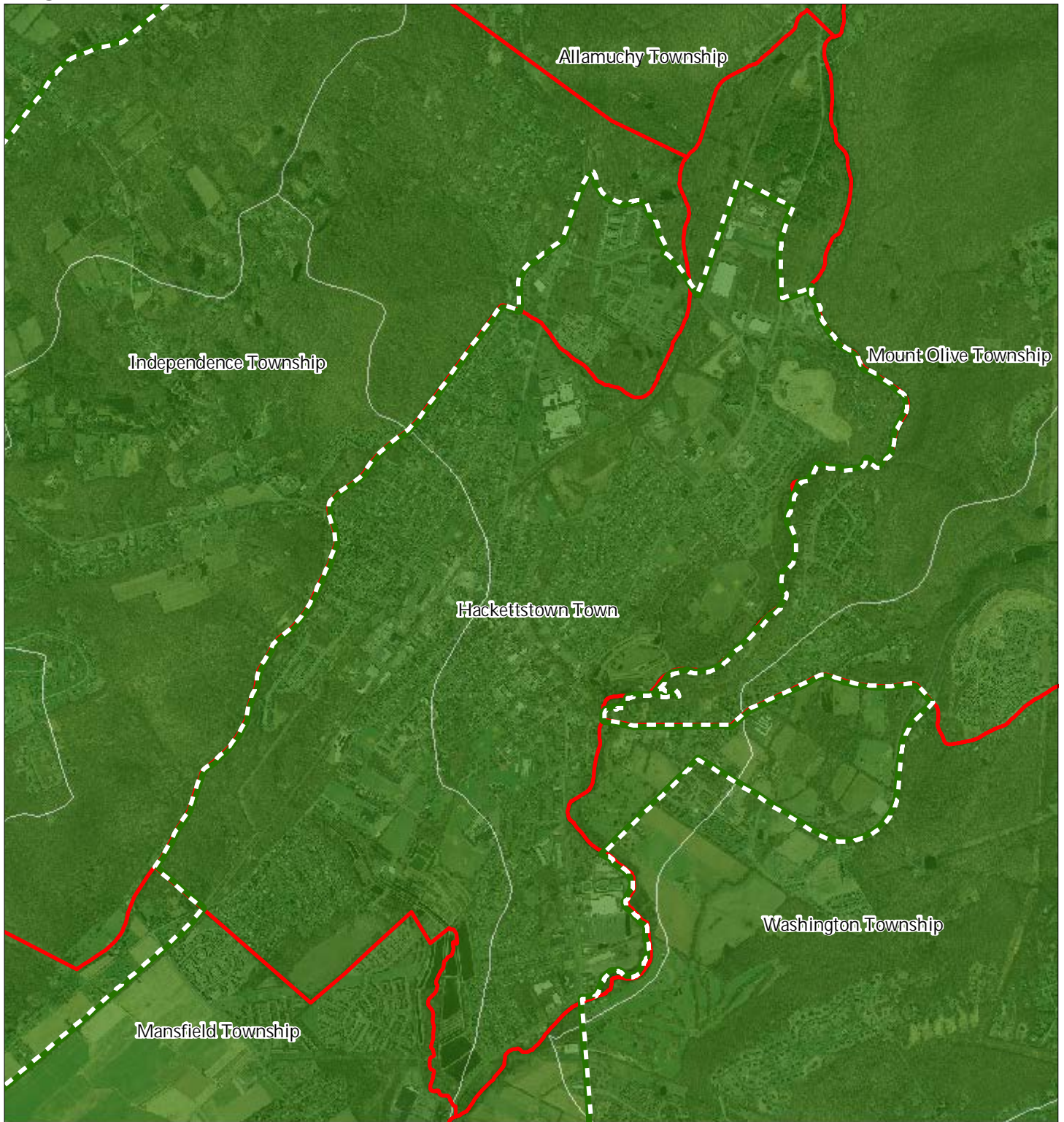
Hackettstown Town



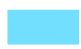




1 inch = 0.443 miles



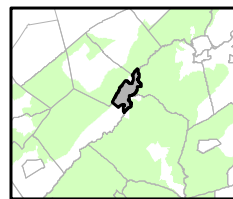
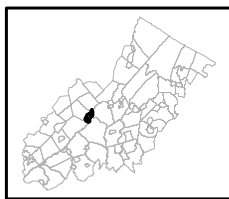
Figure 9: Watershed Values



Watershed Values by HUC14 Subwatershed

-  *Low*
-  *Moderate*
-  *High*
-  Preservation Area
-  Municipal Boundaries

Hackettstown Town

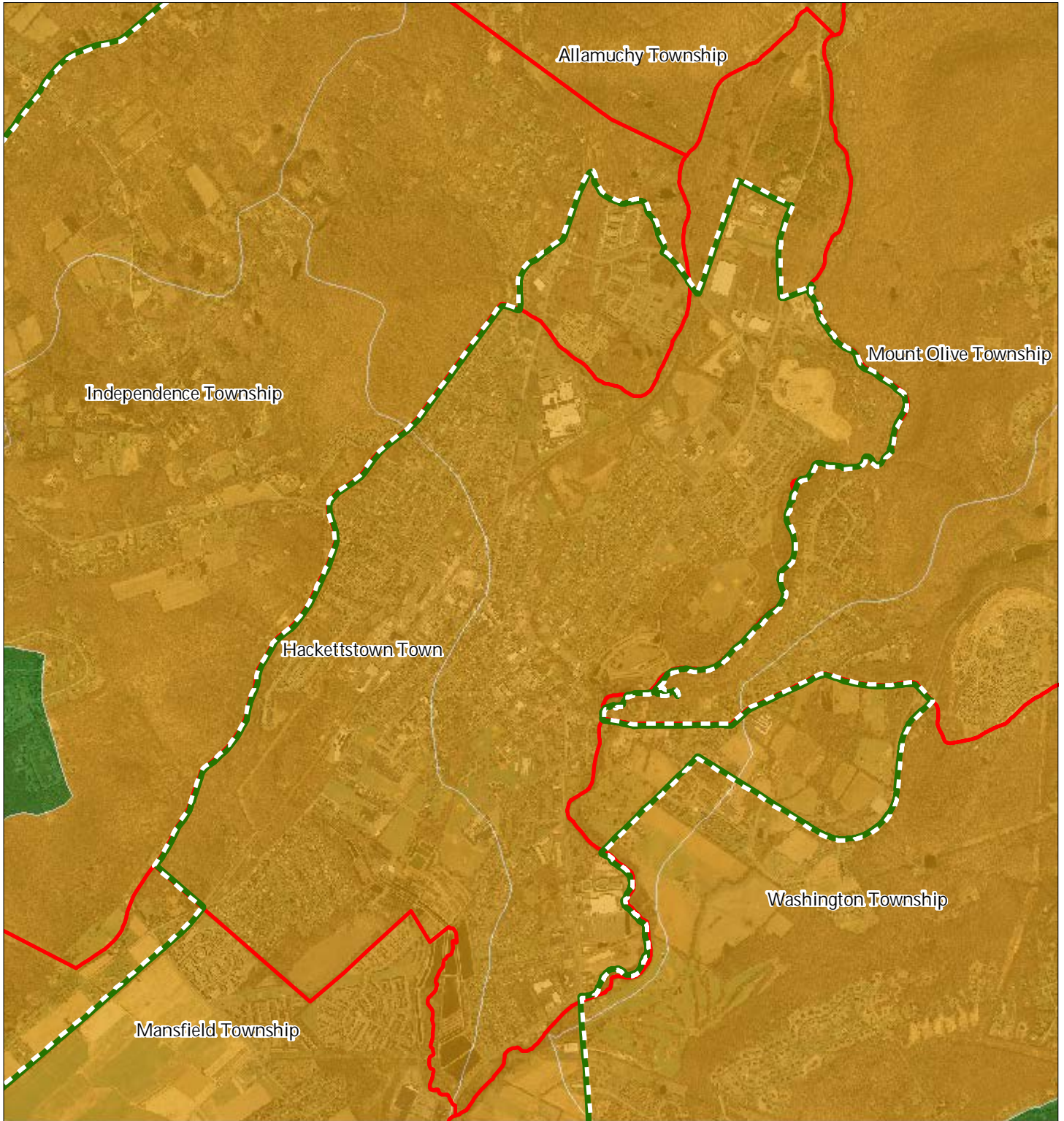


1 inch = 0.443 miles

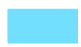






August 2011

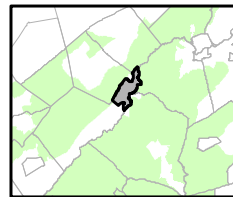
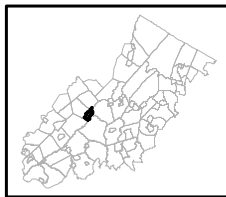
Figure 10: Riparian Integrity



Riparian Integrity by HUC14 Subwatershed

-  Low
-  Moderate
-  High
-  Preservation Area
-  Municipal Boundaries

Hackettstown Town

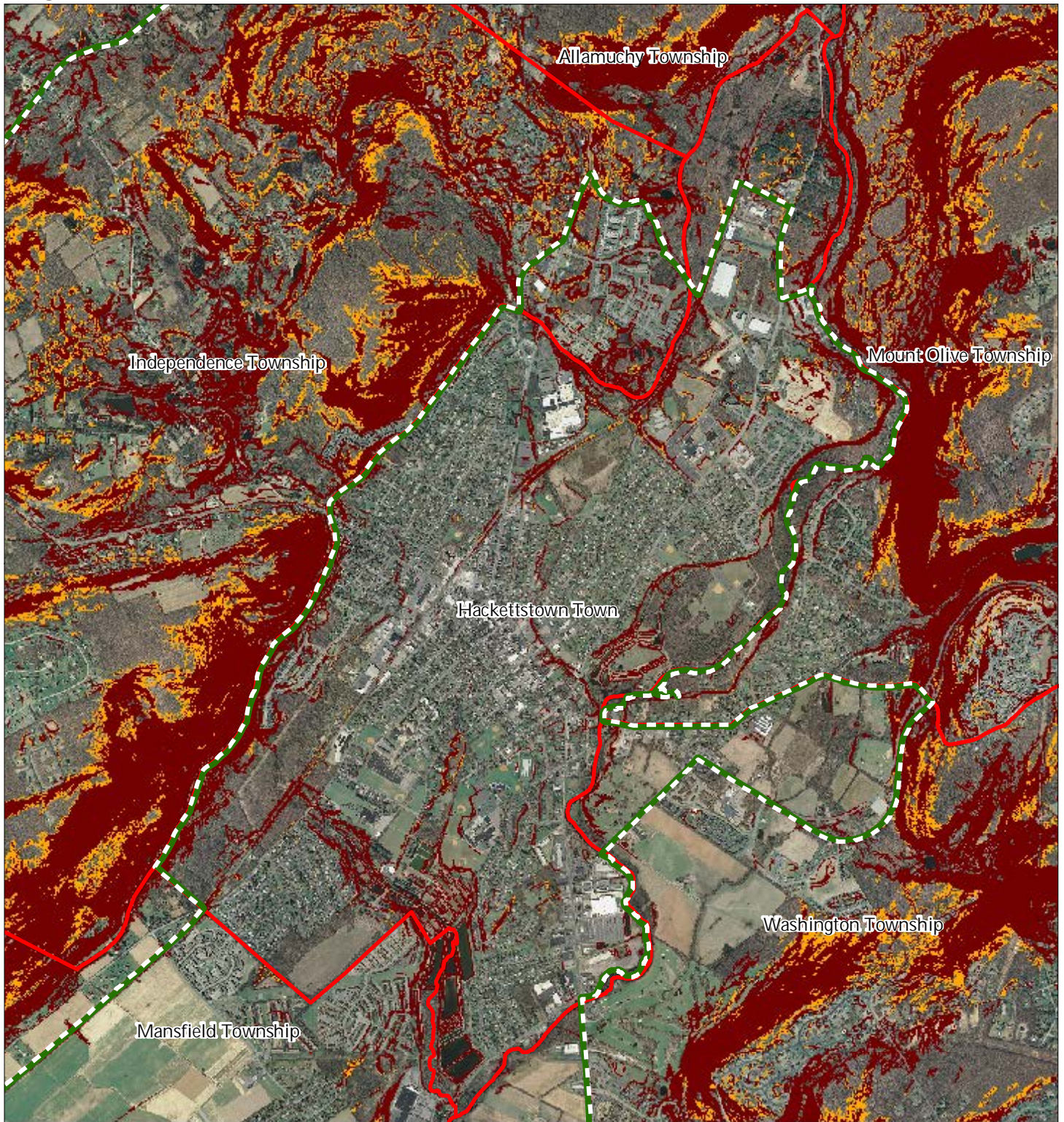


1 inch = 0.443 miles





August 2011

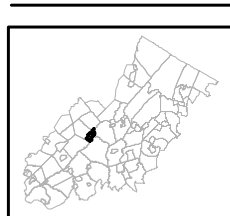
Figure 11: Steep Slope Protection Areas



Steep Slopes

-  Moderate
-  Severe
-  Preservation Area
-  Municipal Boundaries

Hackettstown Town

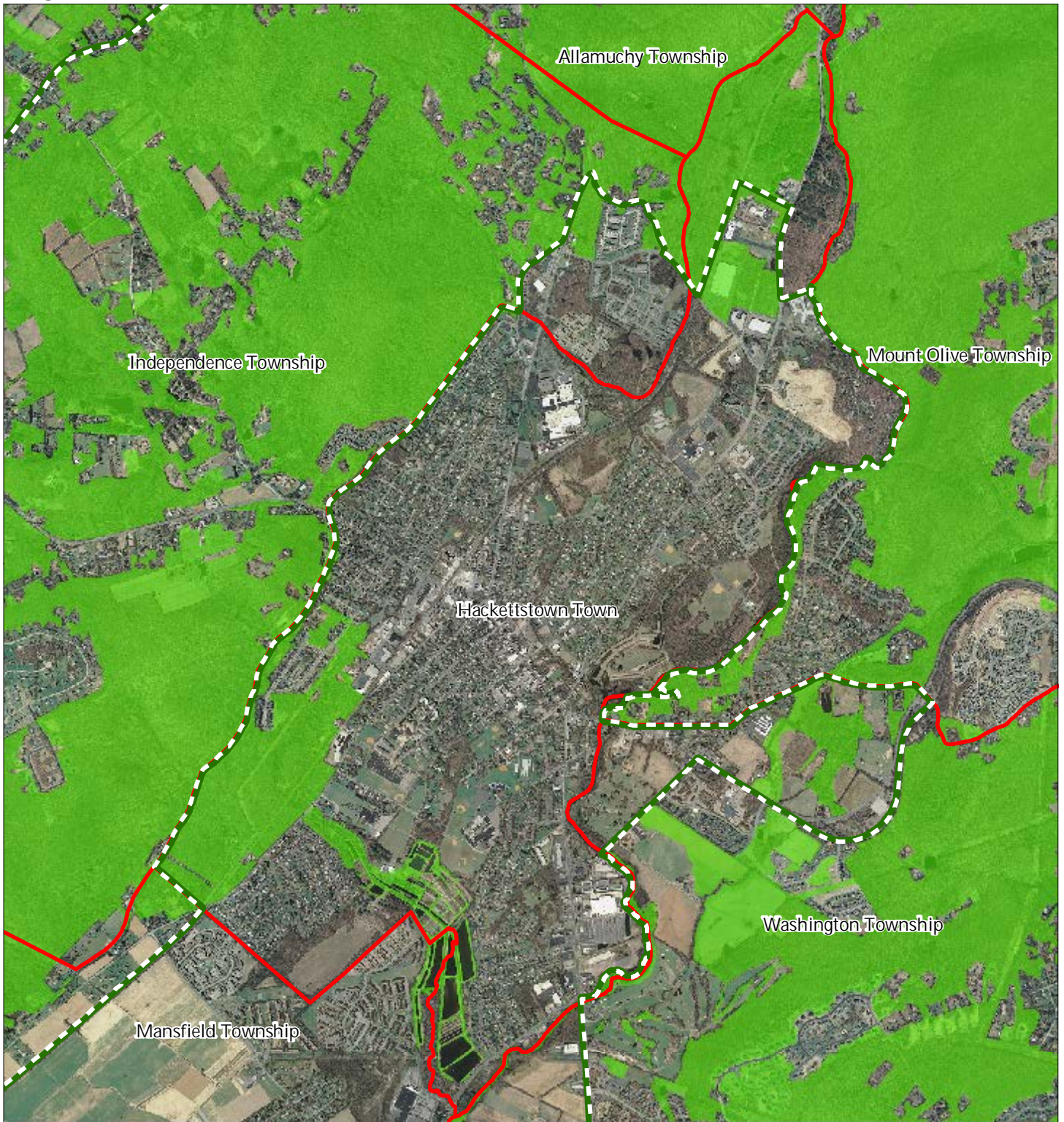





1 inch = 0.443 miles



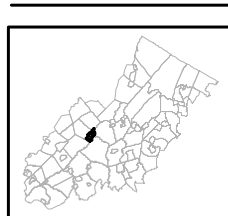
August 2011

Figure 12: Critical Wildlife Habitat



-  Critical Wildlife Habitat
-  Preservation Area
-  Municipal Boundaries

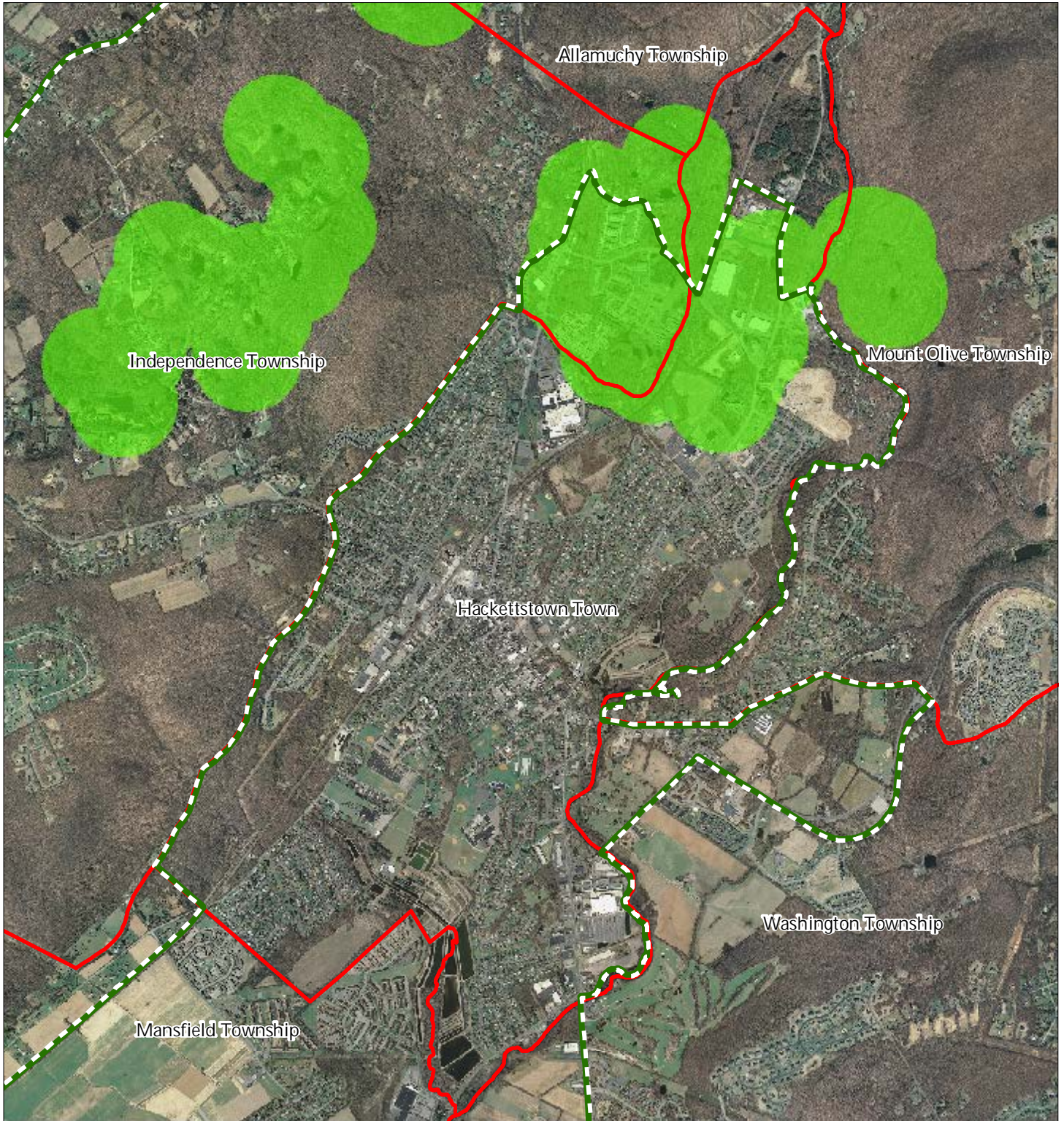
Hackettstown Town






1 inch = 0.443 miles

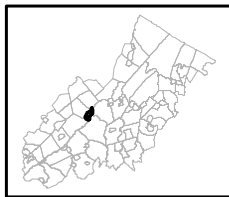


Figure 14: Vernal Pools



-  Vernal Pools + 1000ft Buffer
-  Preservation Area
-  Municipal Boundaries

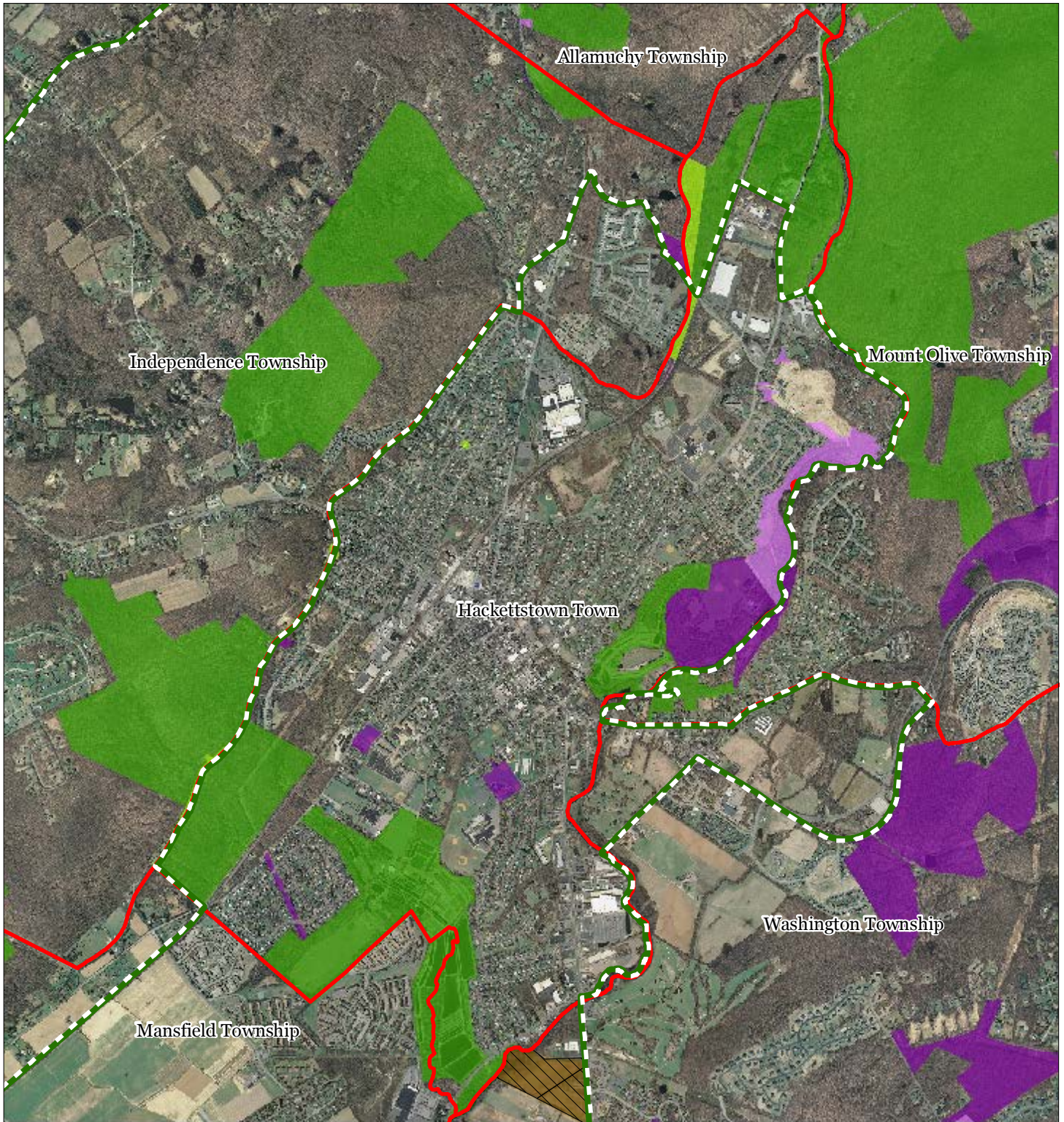
Hackettstown Town



1 inch = 0.443 miles

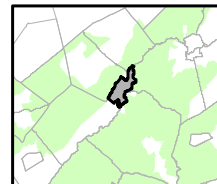
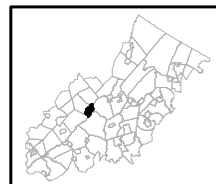


Figure 15: Preserved Lands



- | | |
|---|-------------------------------|
| Preserved Lands | Conservation Easements |
| Federal Open Space | Green Acres |
| State Open Space | SADC Easements |
| County Open Space | SADC Final |
| Municipal Open Space | SADC Preserved |
| Non-Profit/Private Open Space | Municipal Boundaries |
| Water Supply Watershed Lands | Preservation Area |
| Preserved Farmland | |
| Highlands Transfer of Development Lands | |

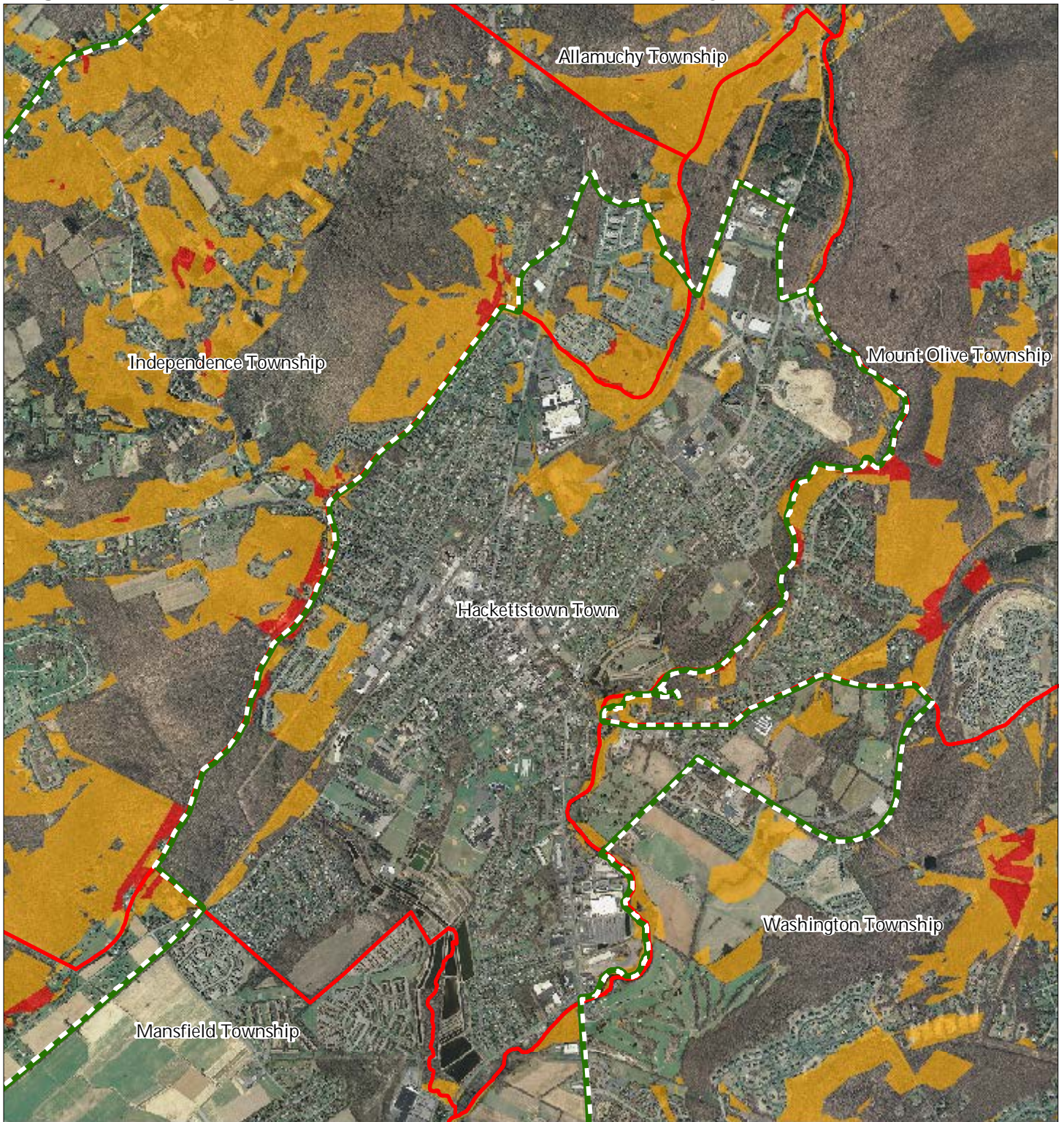
Hackettstown Town







1 inch = 0.443 miles



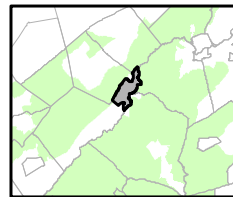
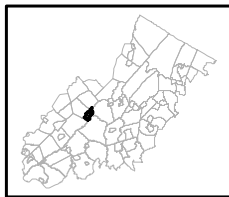
Figure 16: Highlands Conservation Priority Areas



Conservation Priority Area

-  Moderate
-  High
-  Preservation Area
-  Municipal Boundaries

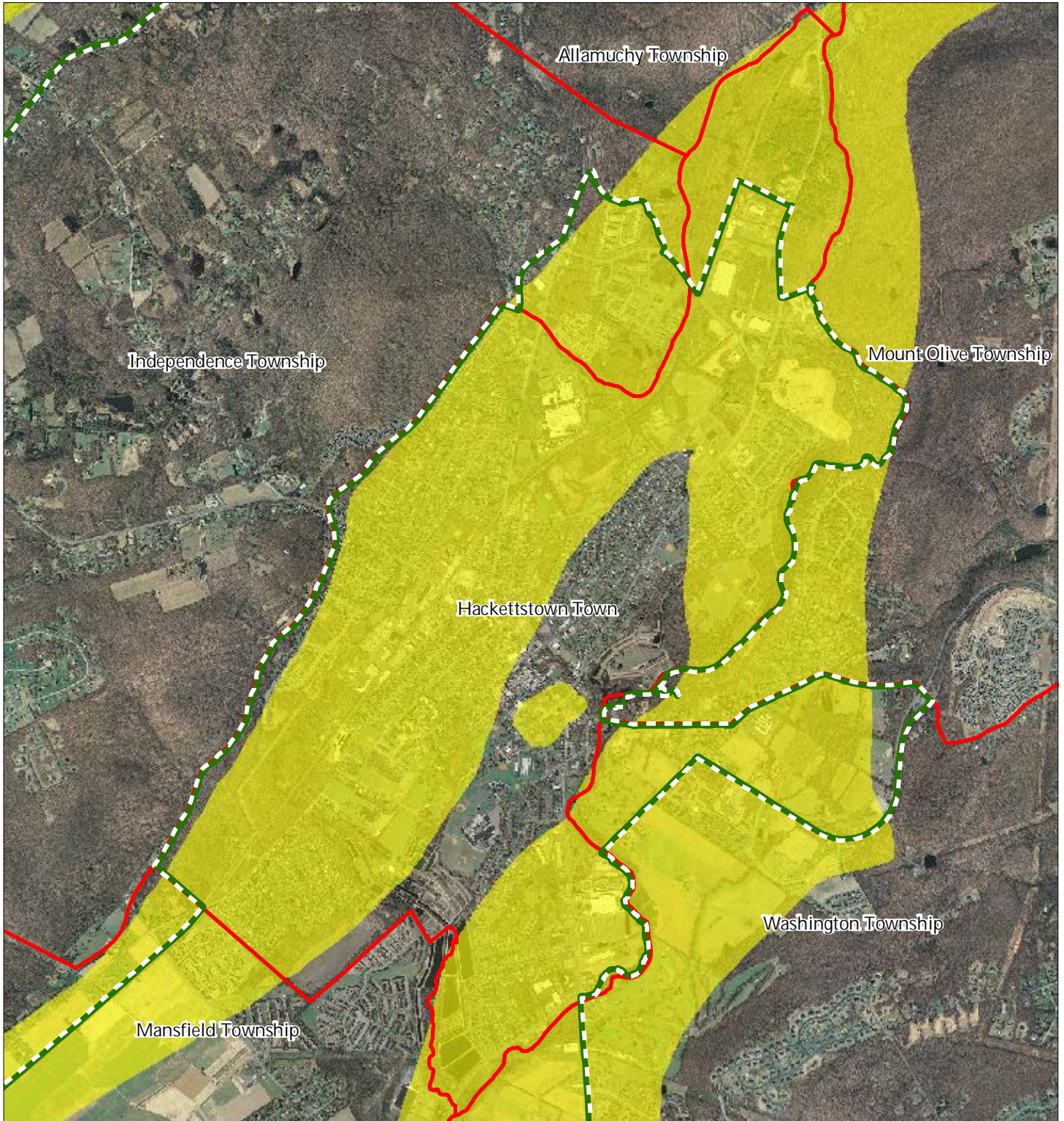
Hackettstown Town






1 inch = 0.443 miles

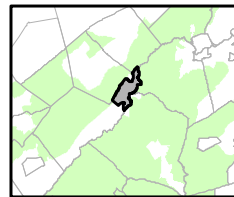
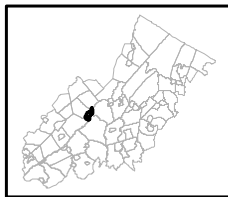


Figure 18: Carbonate Rock Area



-  Carbonate Rock Area
-  Preservation Area
-  Municipal Boundaries

Hackettstown Town

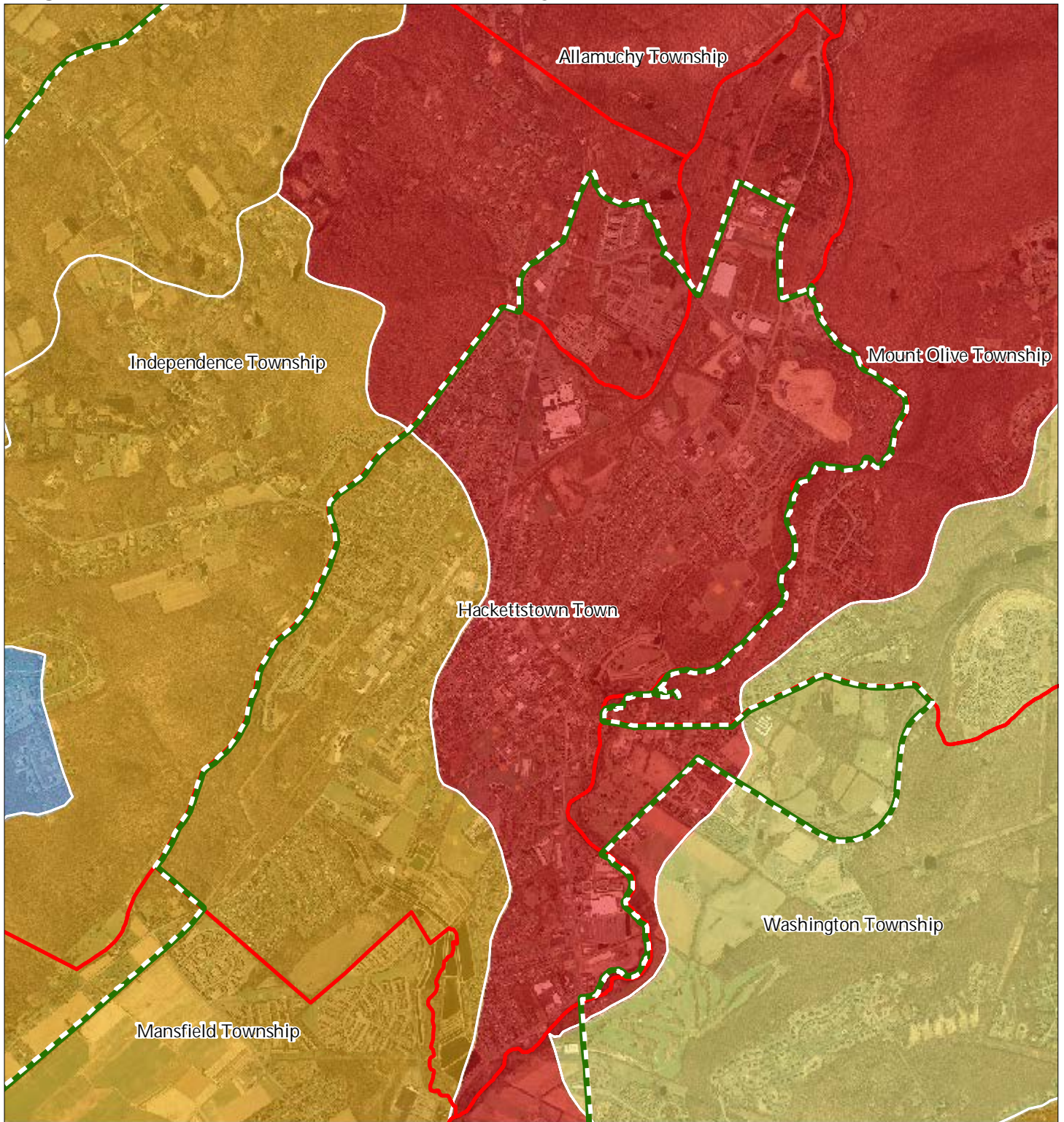


1 inch = 0.443 miles

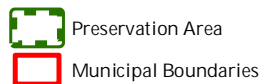
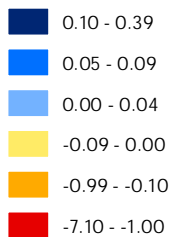


August 2011

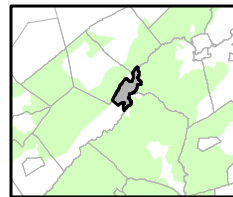
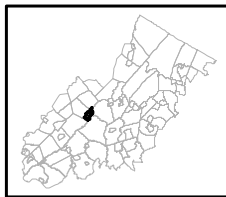
Figure 20: Net Water Availability



Net Water Availability By HUC14
Million Gallons Per Day (MGD)



Hackettstown Town

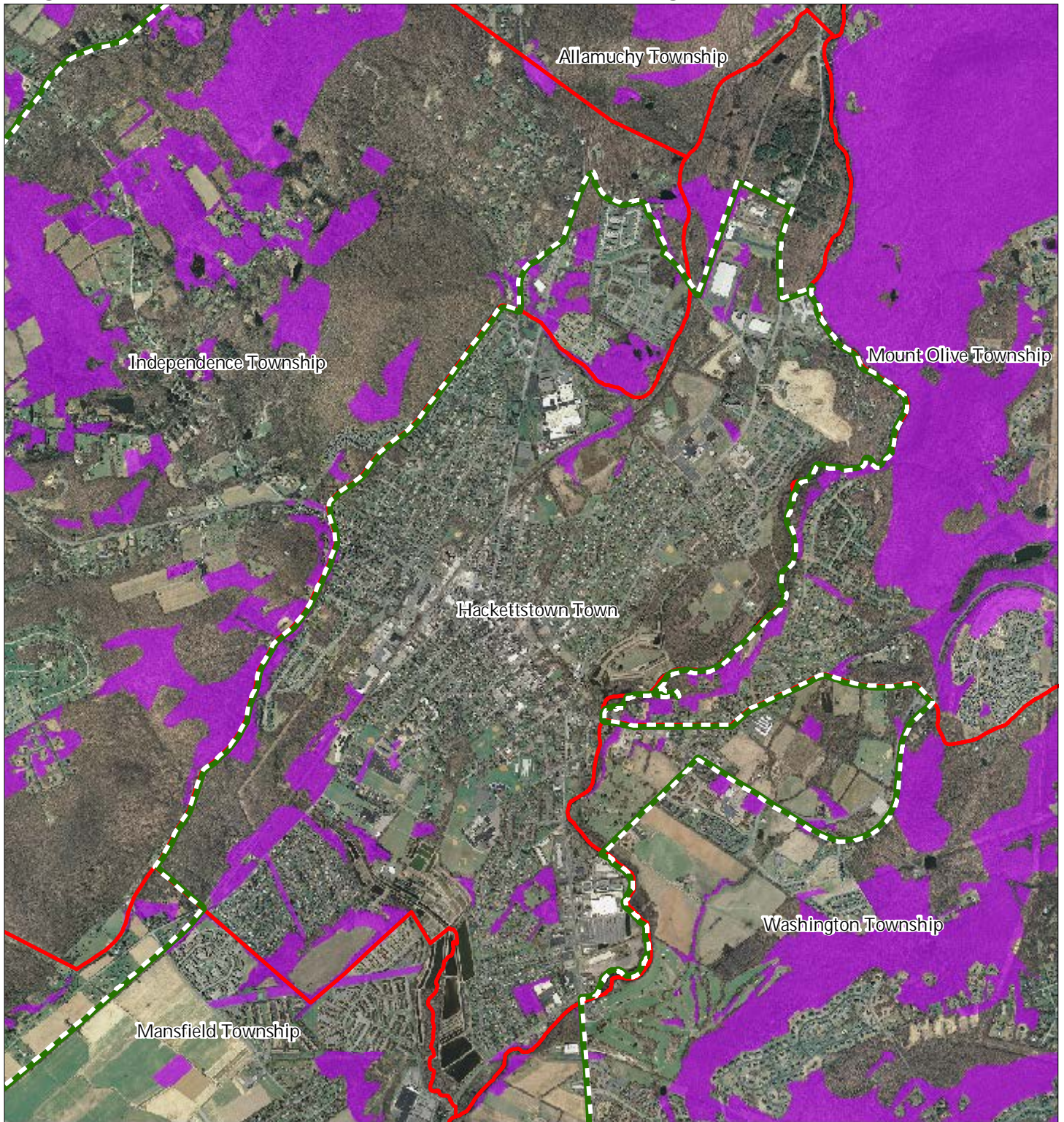





1 inch = 0.443 miles



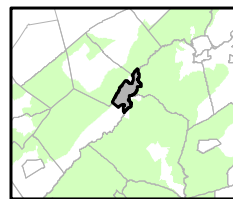
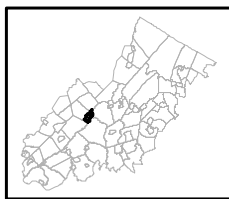
August 2011

Figure 21: Prime Ground Water Recharge Areas



-  Prime Groundwater Recharge Areas
-  Preservation Area
-  Municipal Boundaries

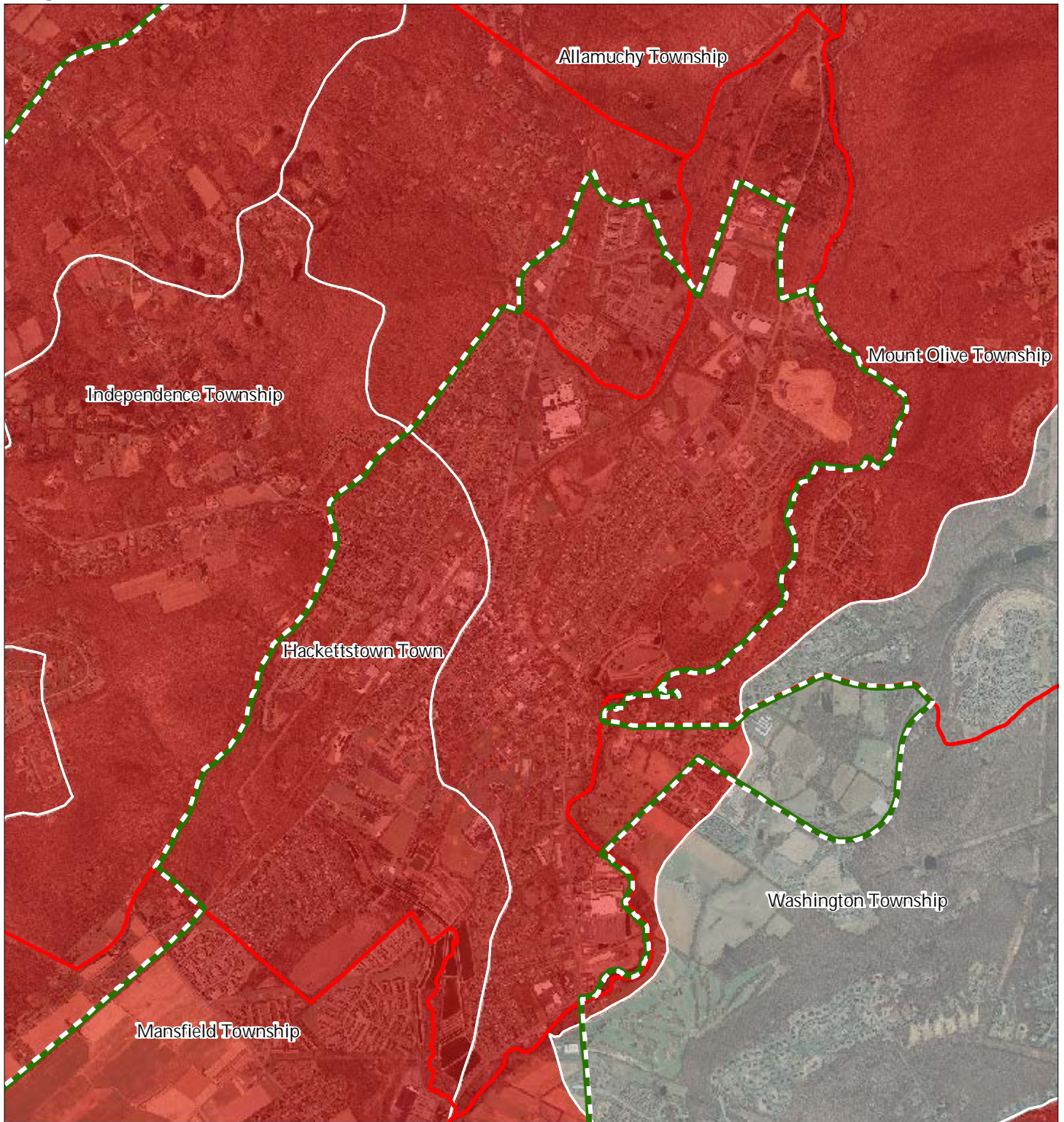
Hackettstown Town



1 inch = 0.443 miles



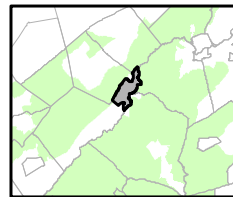
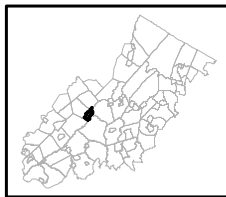
Figure 22: HUC 14s on NJDEP Impaired Waters List



Impaired Waters Overall Assessment by HUC14 Subwatershed

- Non Impacted*
- Insufficient Data Available*
- Moderate*
- Water Quality Impaired*
- Preservation Area
- Municipal Boundaries

Hackettstown Town

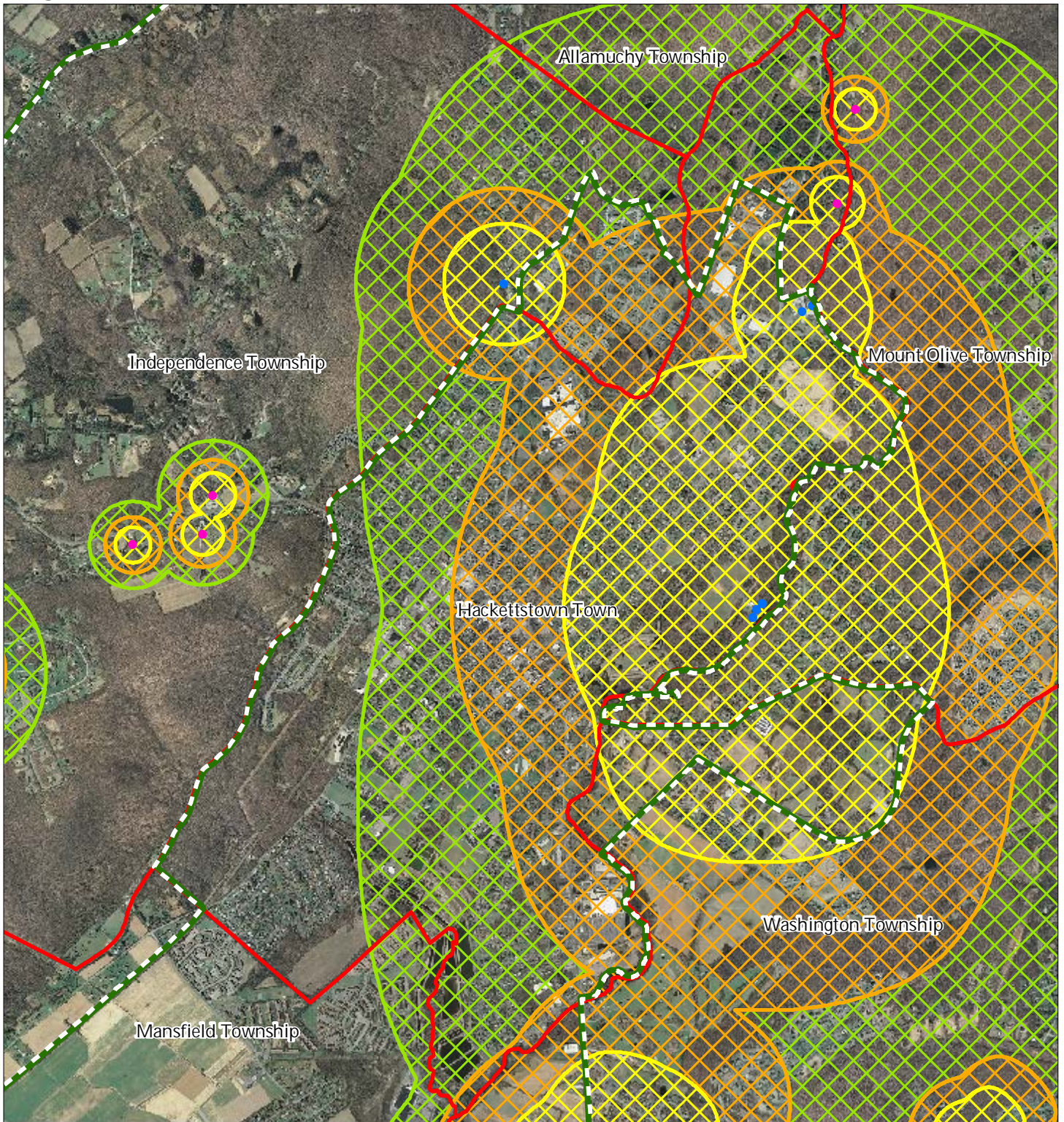


1 inch = 0.443 miles



August 2011



Figure 23: Wellhead Protection Areas



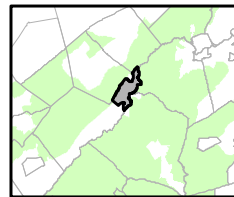
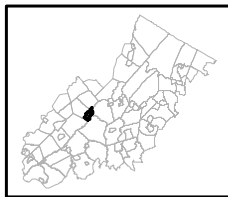
- Public Community Wells
- Public Non-Community Wells

Wellhead Protection Areas

-  2-Year Tier
-  5-Year Tier
-  12-Year Tier

-  Preservation Area
-  Municipal Boundaries

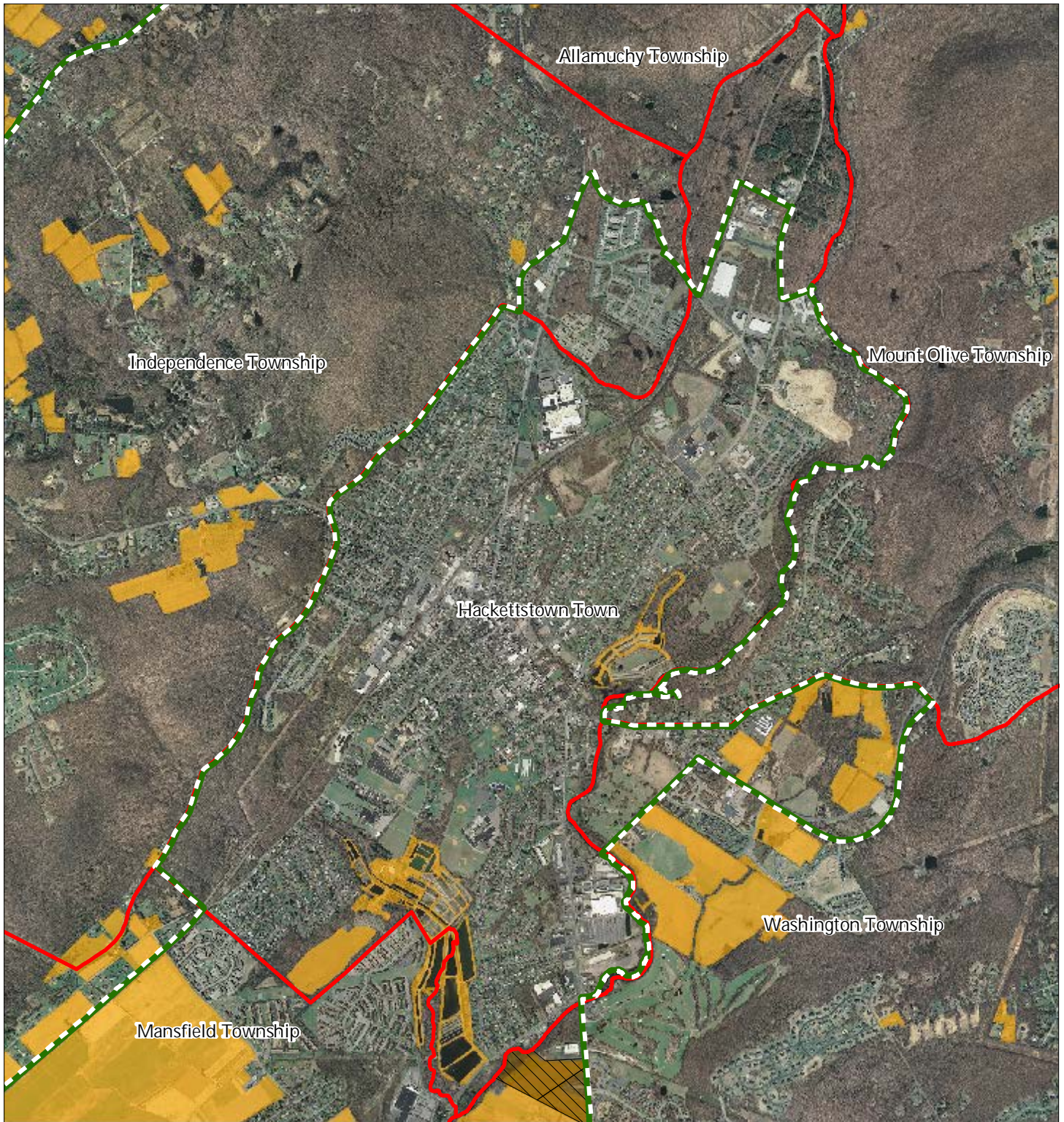
Hackettstown Town



1 inch = 0.443 miles



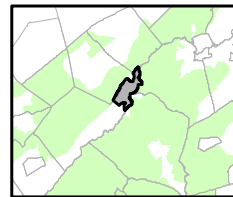
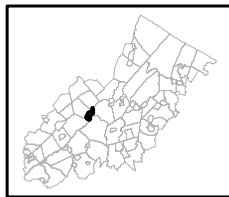
Figure 26: Preserved Farms, SADC Easements, All Agricultural Uses



SADC Easements

-  *SADC Final*
-  *SADC Preserved*
-  Preserved Farmland
-  Agriculture Uses
-  Preservation Area
-  Municipal Boundaries

Hackettstown Town

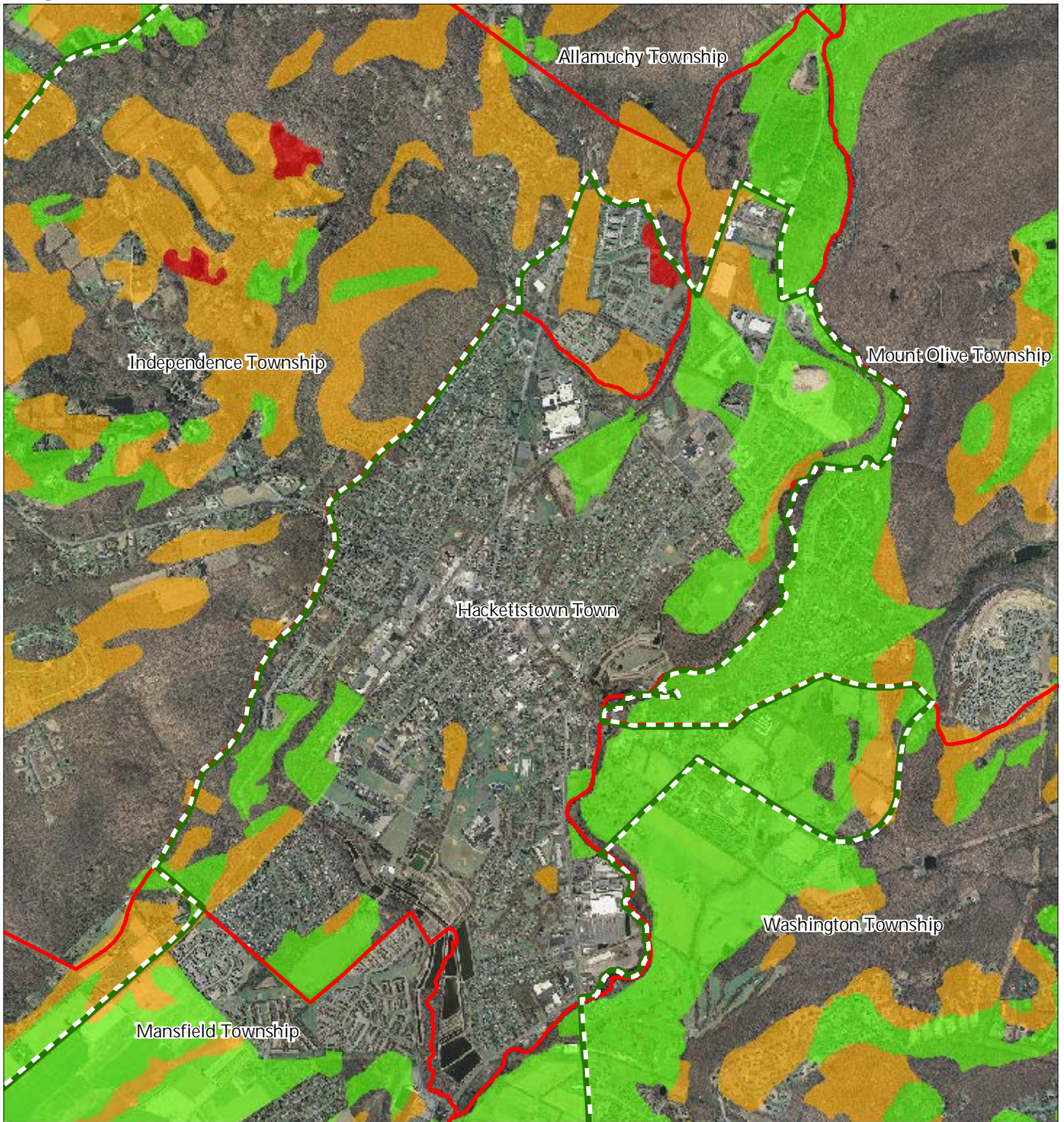


1 inch = 0.443 miles



August 2011

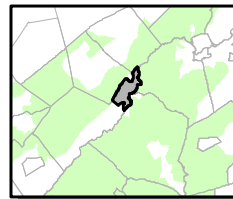
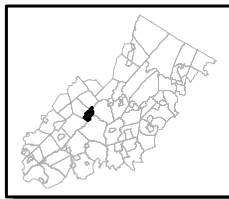
Figure 27: Important Farmland Soils



Important Farmland Soils

-  Prime Farmland
-  Farmland of Local Importance
-  Farmland of Statewide Importance
-  Farmland of Unique Importance
-  Preservation Area
-  Municipal Boundaries

Hackettstown Town

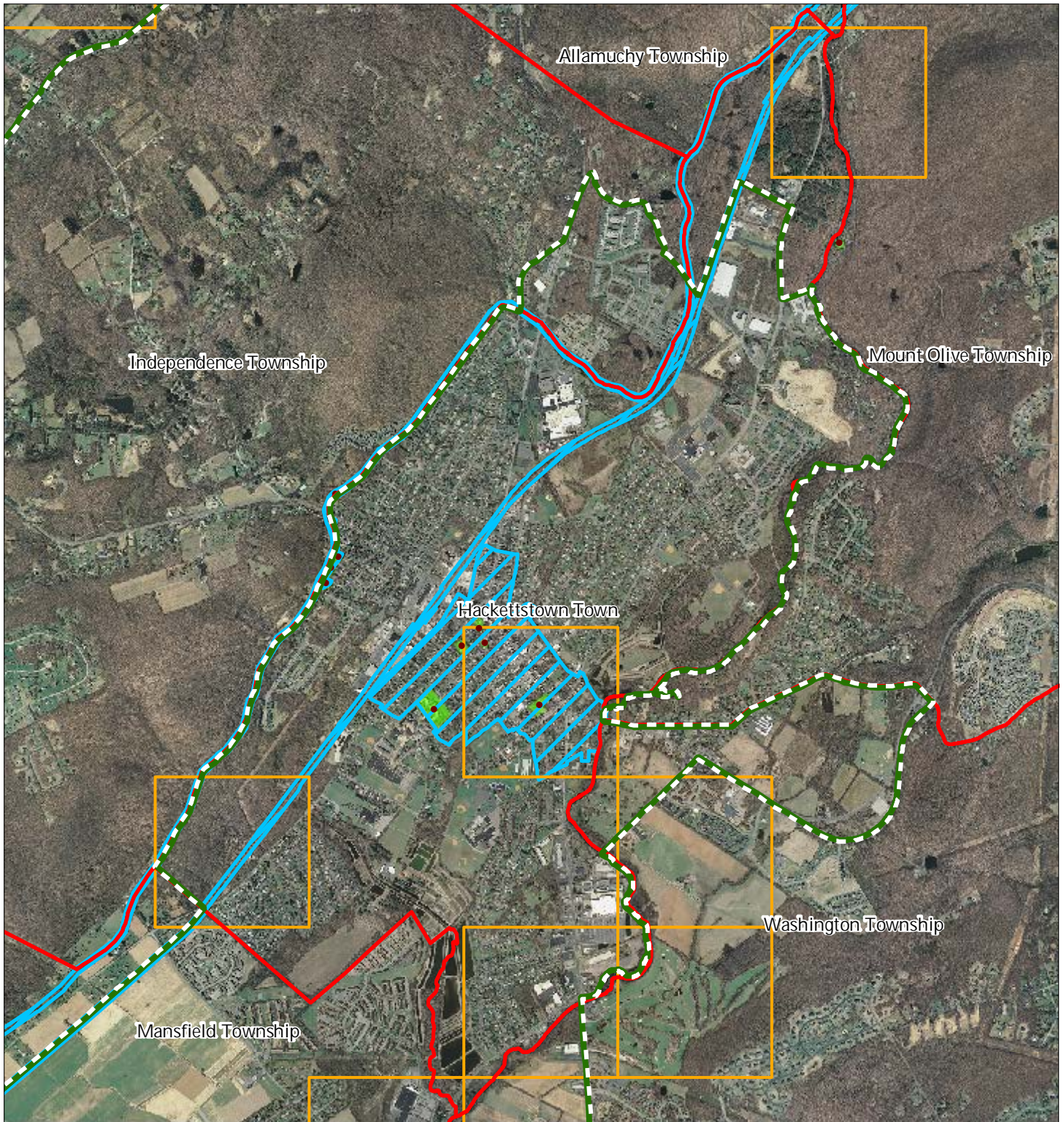


1 inch = 0.443 miles



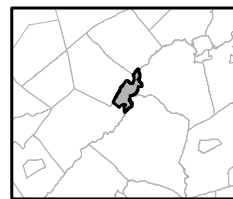
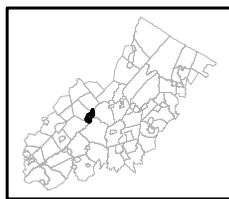
August 2011

Figure 28: Historic, Cultural, and Archaeological Resources Inventory



-  Preservation Area
-  Municipal Boundaries
-  Archaeological Grids (1 sqmi)
-  NJ Historic Districts
-  Historic Property Points
-  Historic Property Polygons

Hackettstown Town

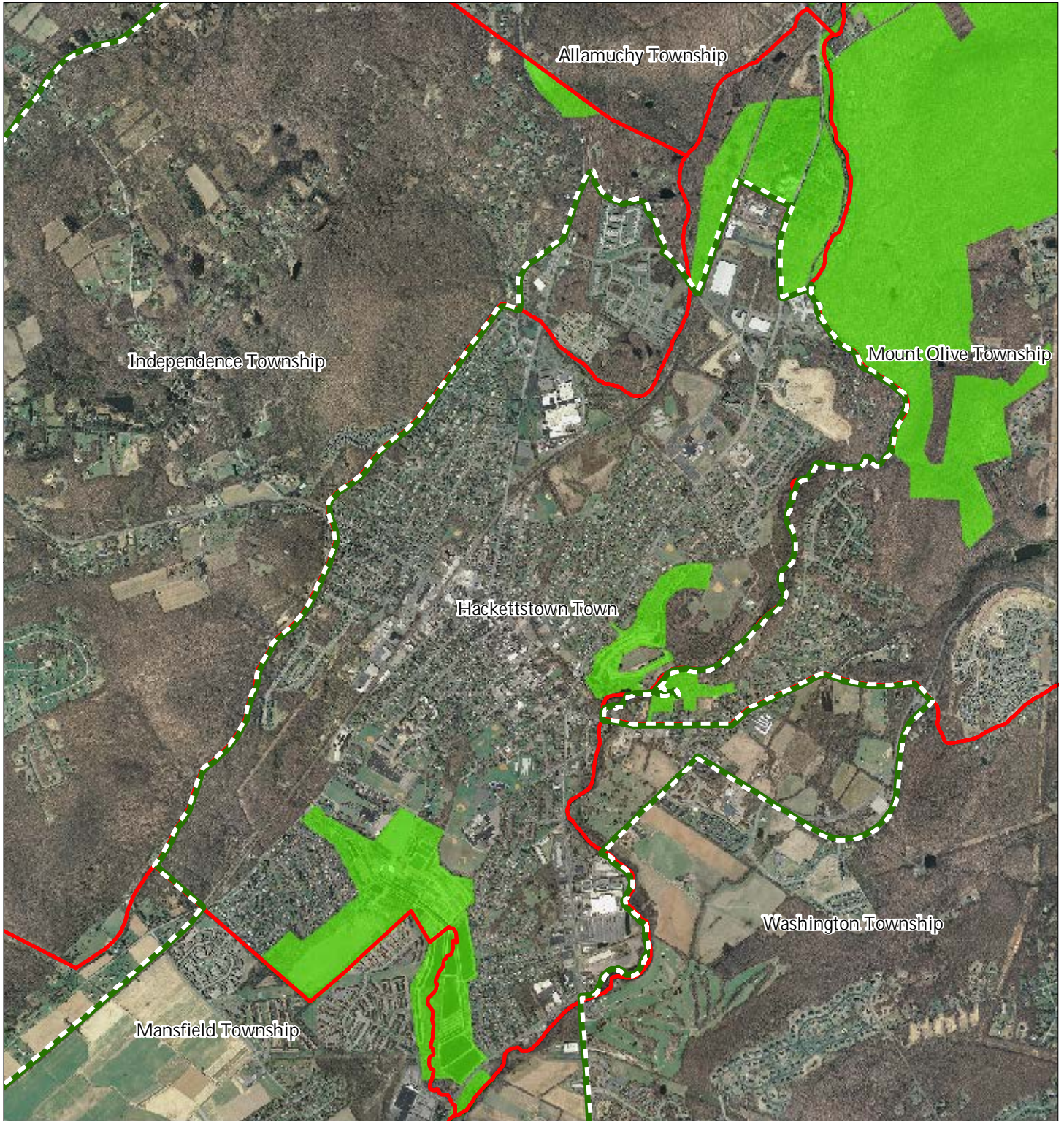





1 inch = 0.443 miles



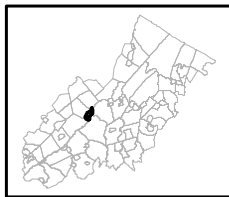
August 2011

Figure 29: Baseline Scenic Resources Inventory



-  Scenic Resources
-  Municipal Boundaries
-  Preservation Area

Hackettstown Town

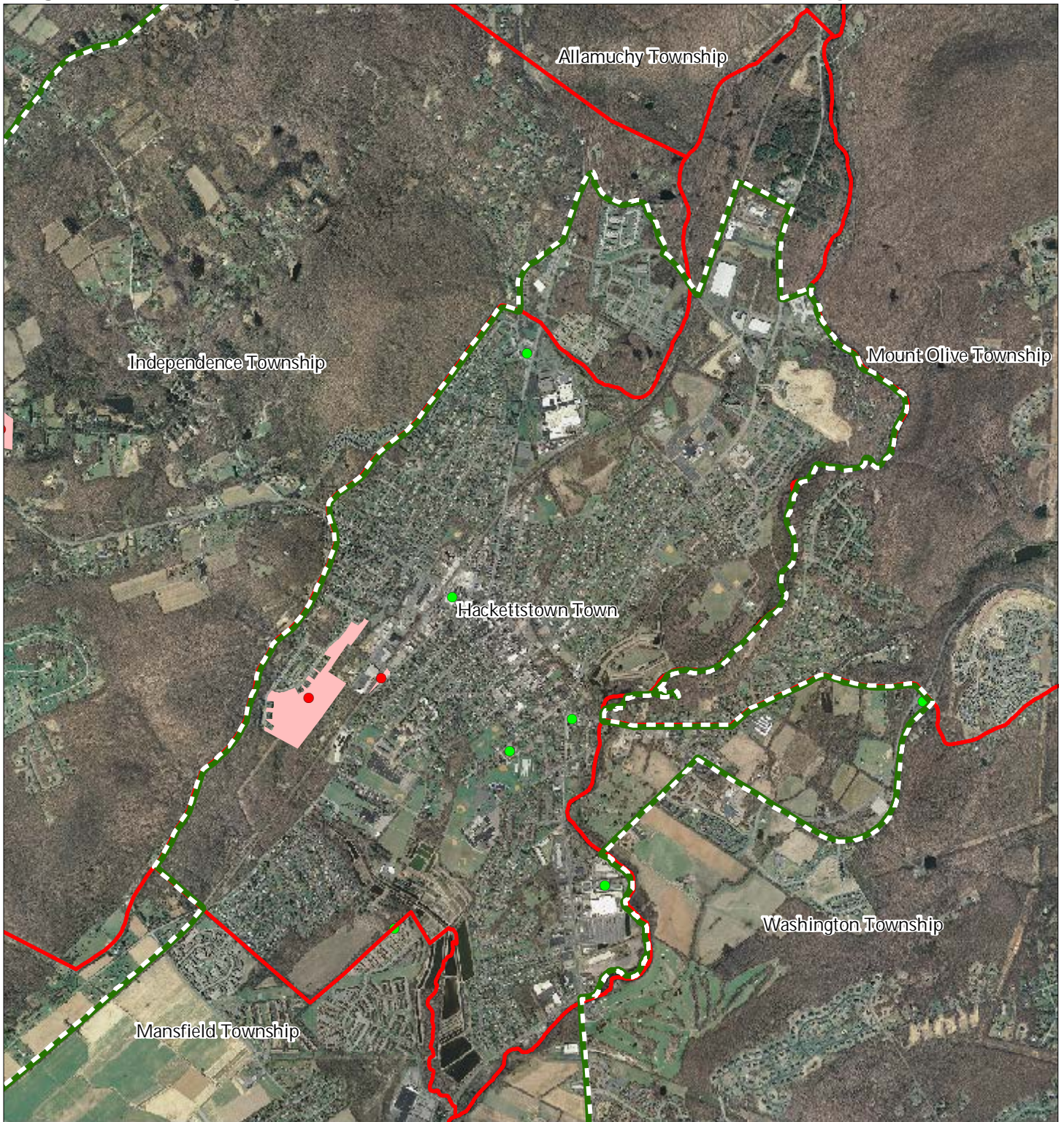


1 inch = 0.443 miles



August 2011

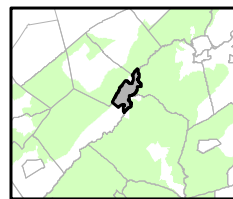
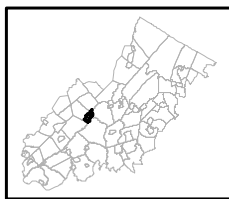
Figure 30: Highlands Contaminated Site Inventory



Highlands Contaminated Site Inventory

Hackettstown Town

- Tier 1 Sites
- Tier 1 Sites (Polygons)
- Tier 2 Sites
- Preservation Area
- Municipal Boundaries

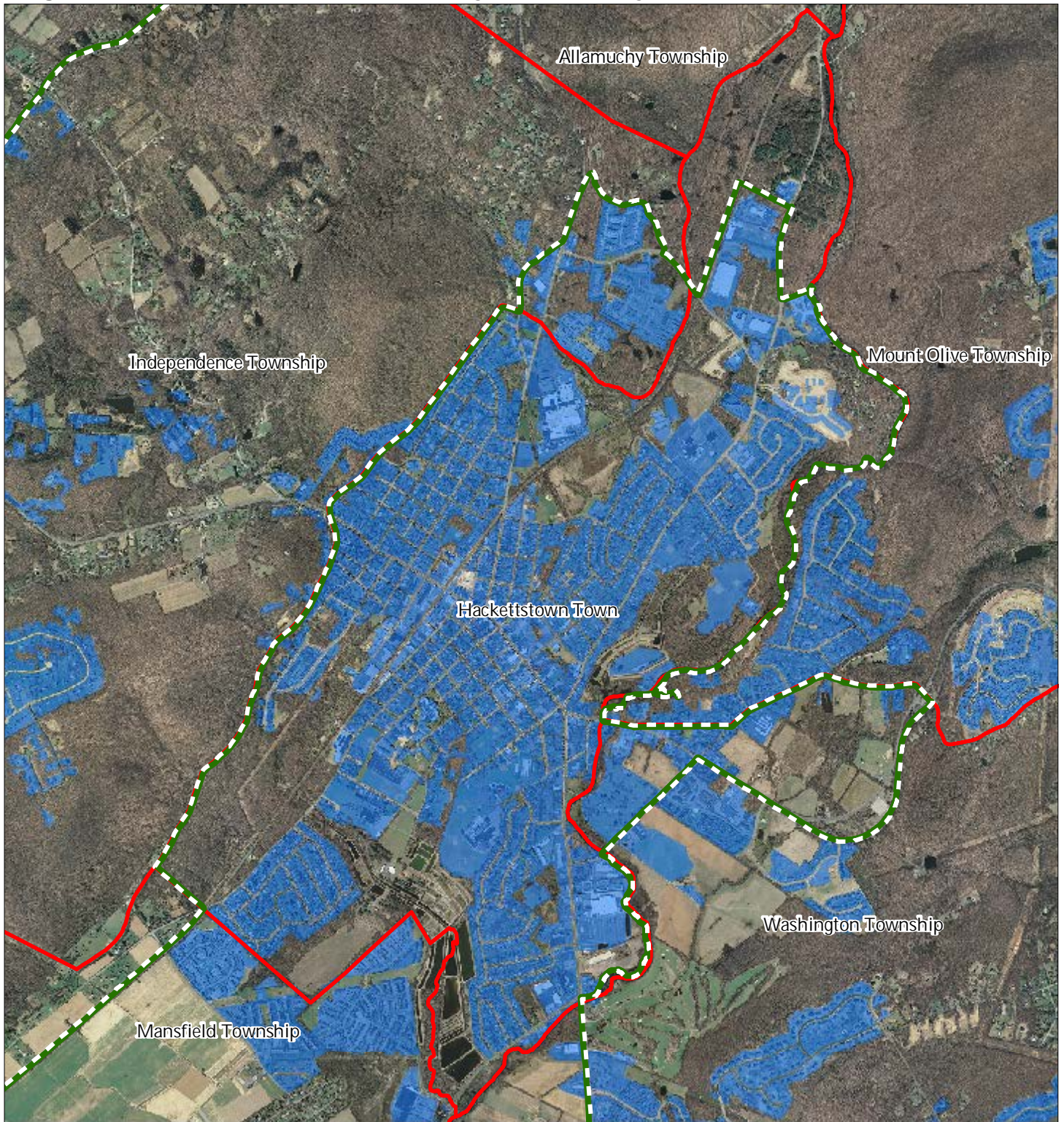





1 inch = 0.443 miles



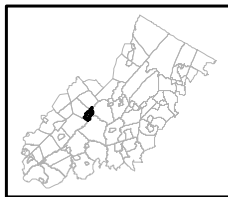
August 2011

Figure 31: Public Community Water Systems



-  Public Community Water Systems
-  Preservation Area
-  Municipal Boundaries

Hackettstown Town

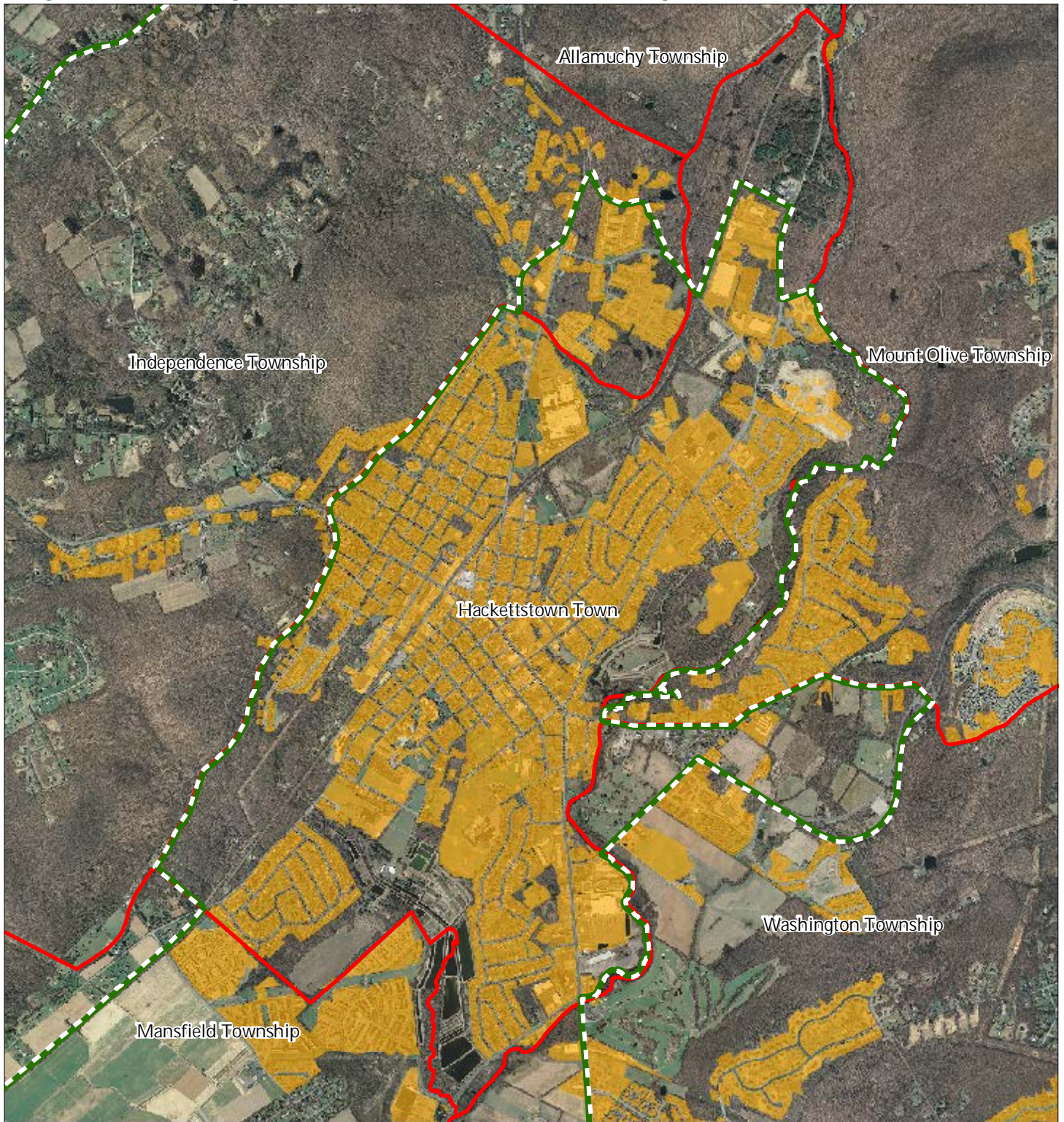


1 inch = 0.443 miles






August 2011

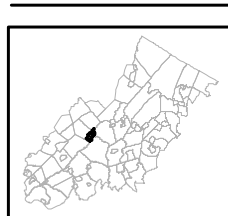
Figure 32: Highlands Domestic Sewerage Facilities



Highlands Domestic Sewerage Facilities

-  Existing Area Served
-  Preservation Area
-  Municipal Boundaries

Hackettstown Town

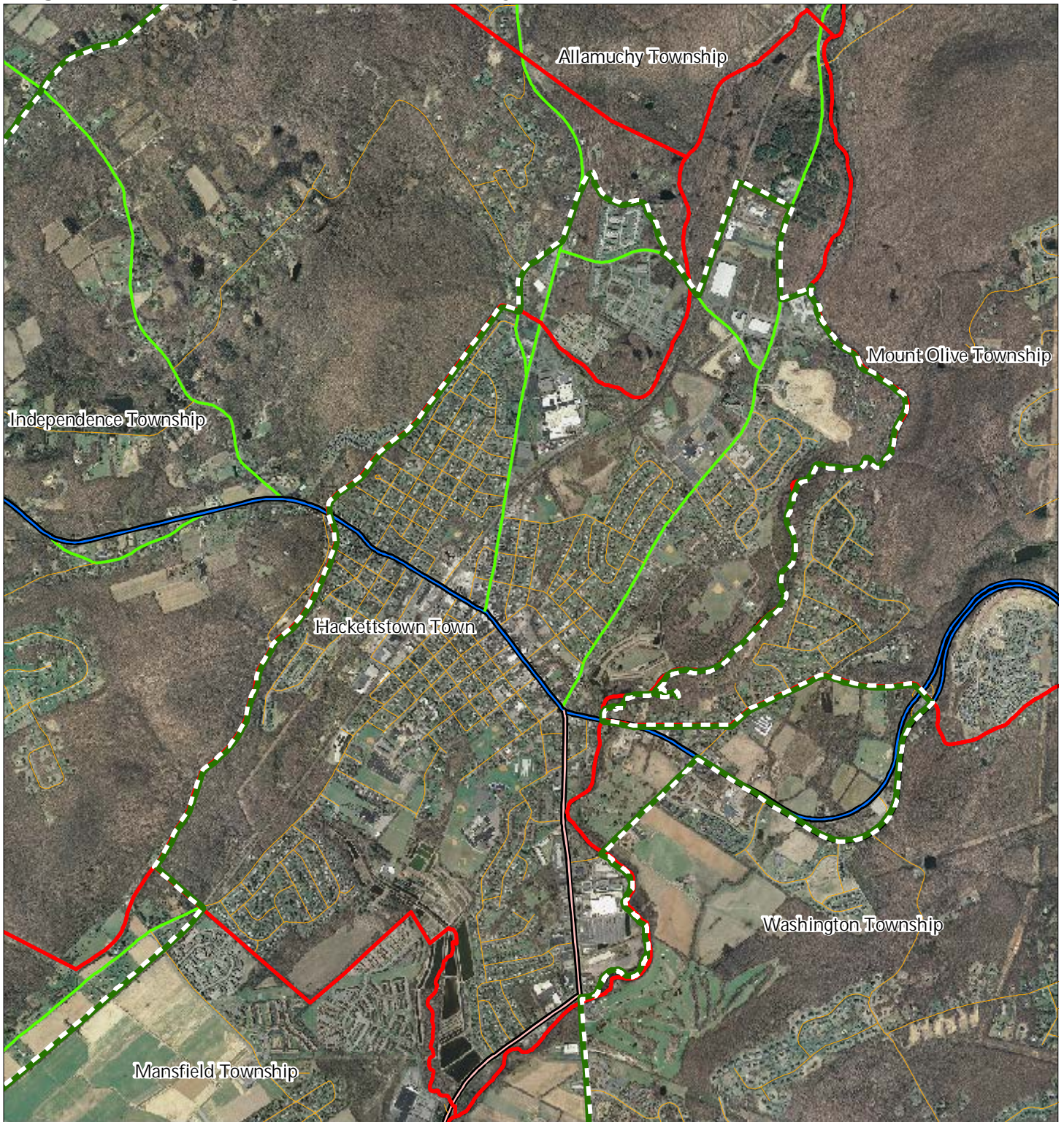


1 inch = 0.443 miles










August 2011

Figure 33: Highlands Roadway Network

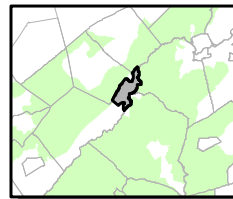
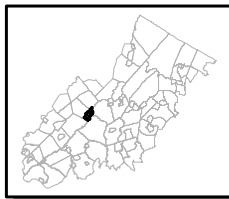


Roadway Network

-  Interstate Highways
-  U.S. Routes
-  State Routes
-  County Routes
-  Local Routes

-  Preservation Area
-  Municipal Boundaries

Hackettstown Town

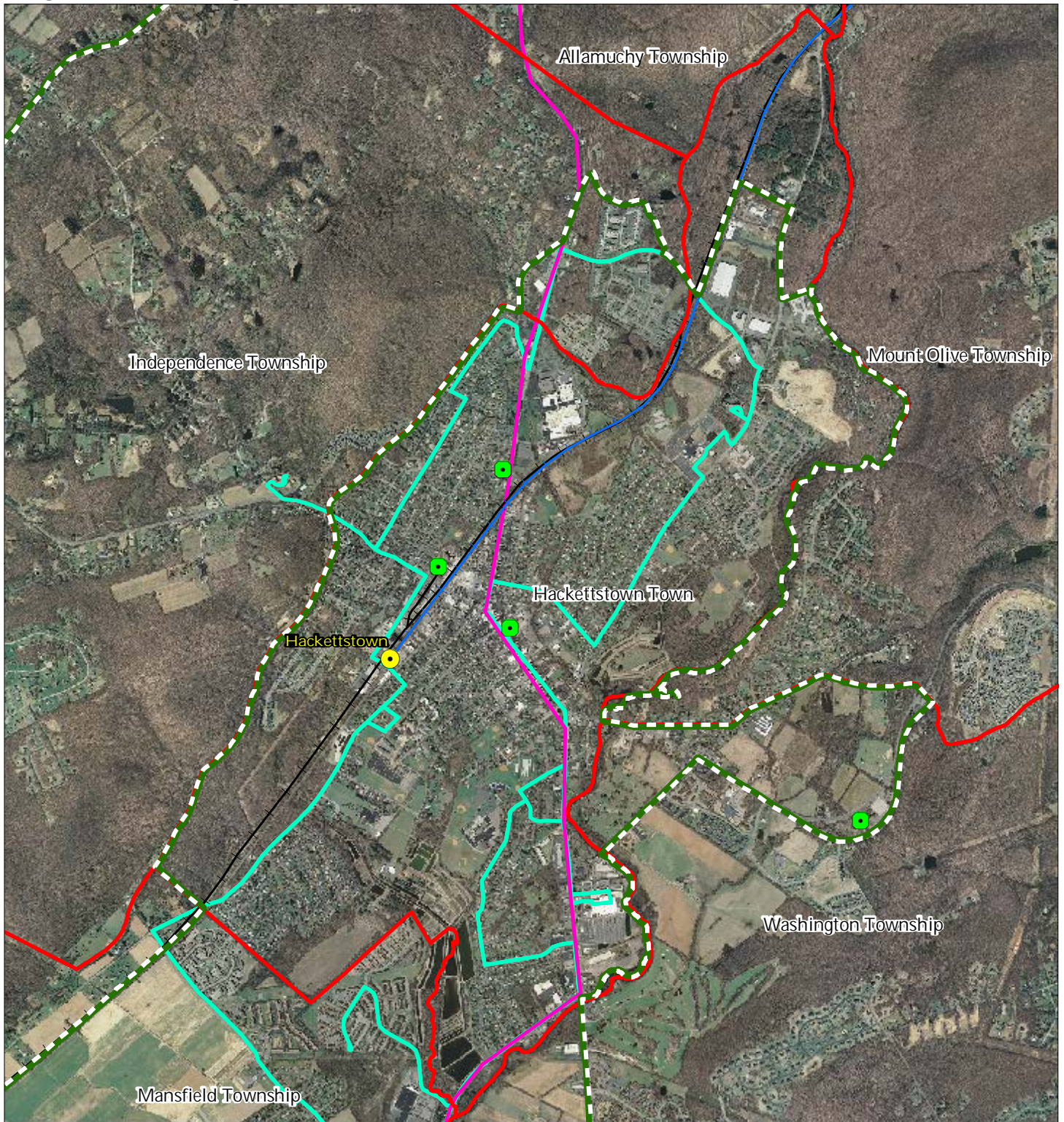


1 inch = 0.443 miles



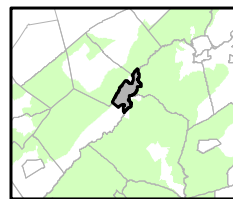
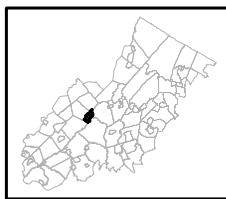
August 2011

Figure 34: Highlands Transit Network



- | | |
|---|----------------------|
| Rail Network | Rail Stations |
| <i>Boonton Line</i> | Park and Ride Sites |
| <i>Main Line & Bergen County Line</i> | Private Bus Lines |
| <i>Morris and Essex Line</i> | NJ Transit Bus Lines |
| <i>Raritan Valley Line</i> | Airports |
| Freight Rail Lines | |
| <i>Freight Rail Lines</i> | |
| <i>Abandoned Freight Rail</i> | |

Hackettstown Town



1 inch = 0.443 miles



August 2011