

Exhibit A. Township Highlands Area

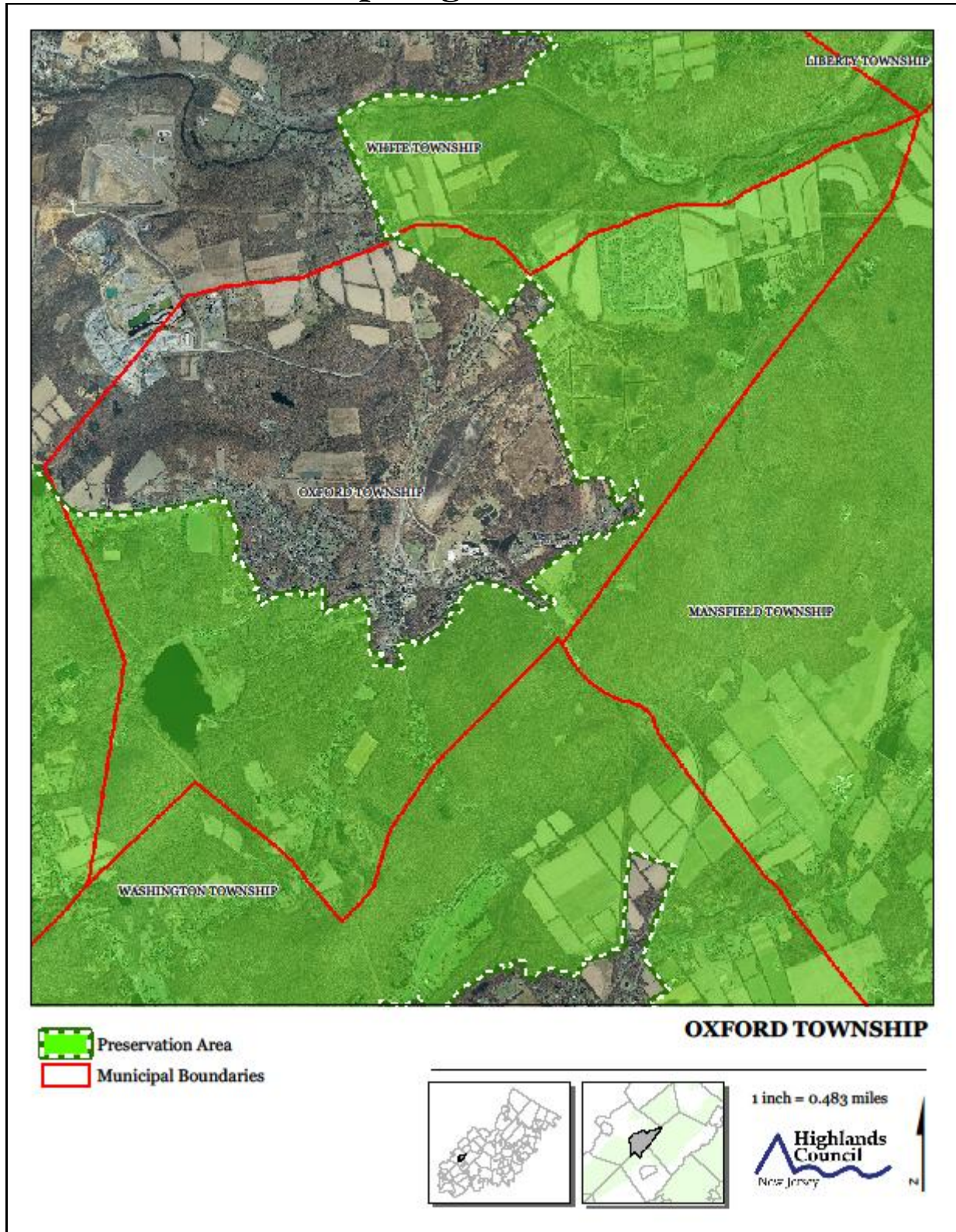


Exhibit B. Township Land Use Inventory

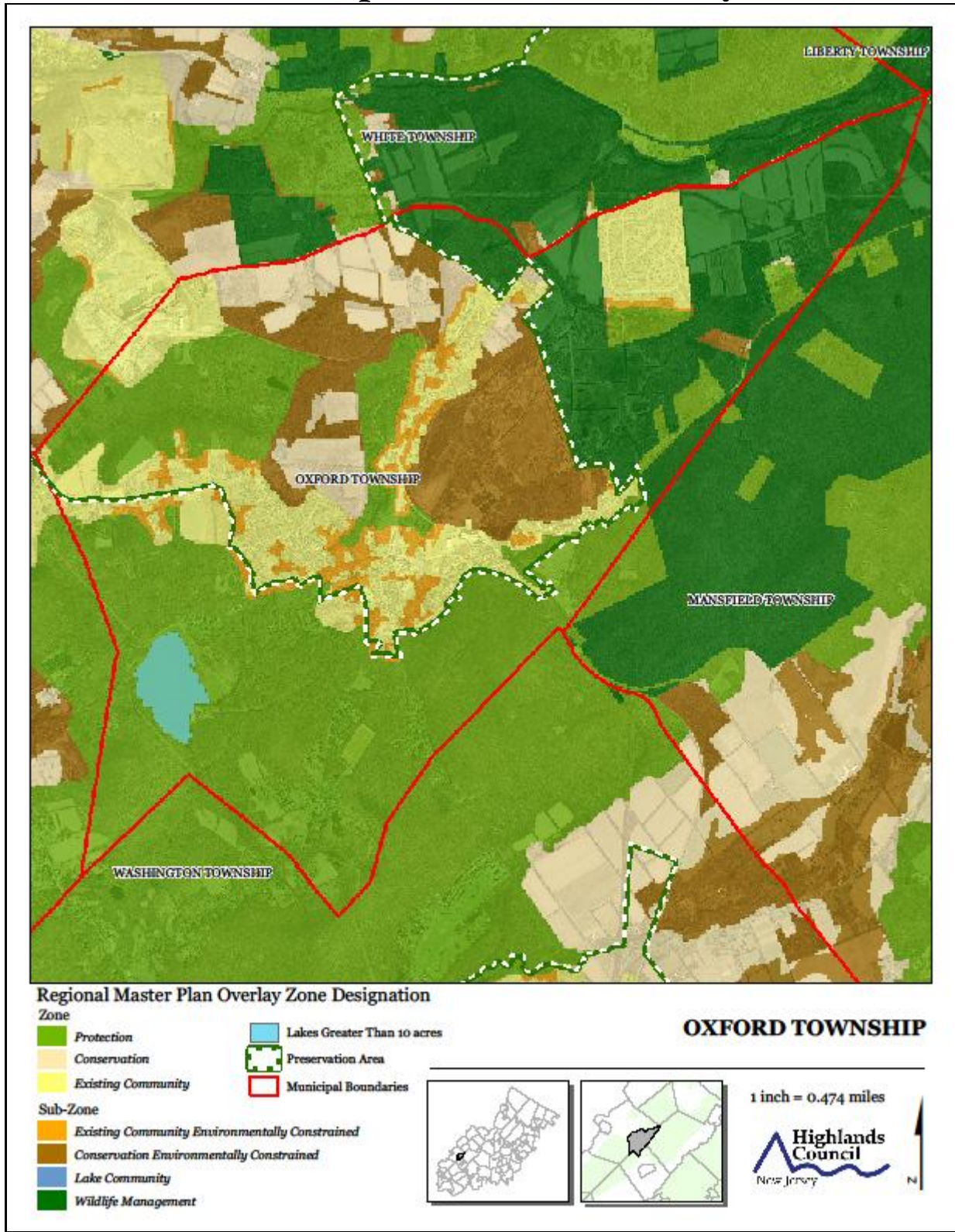
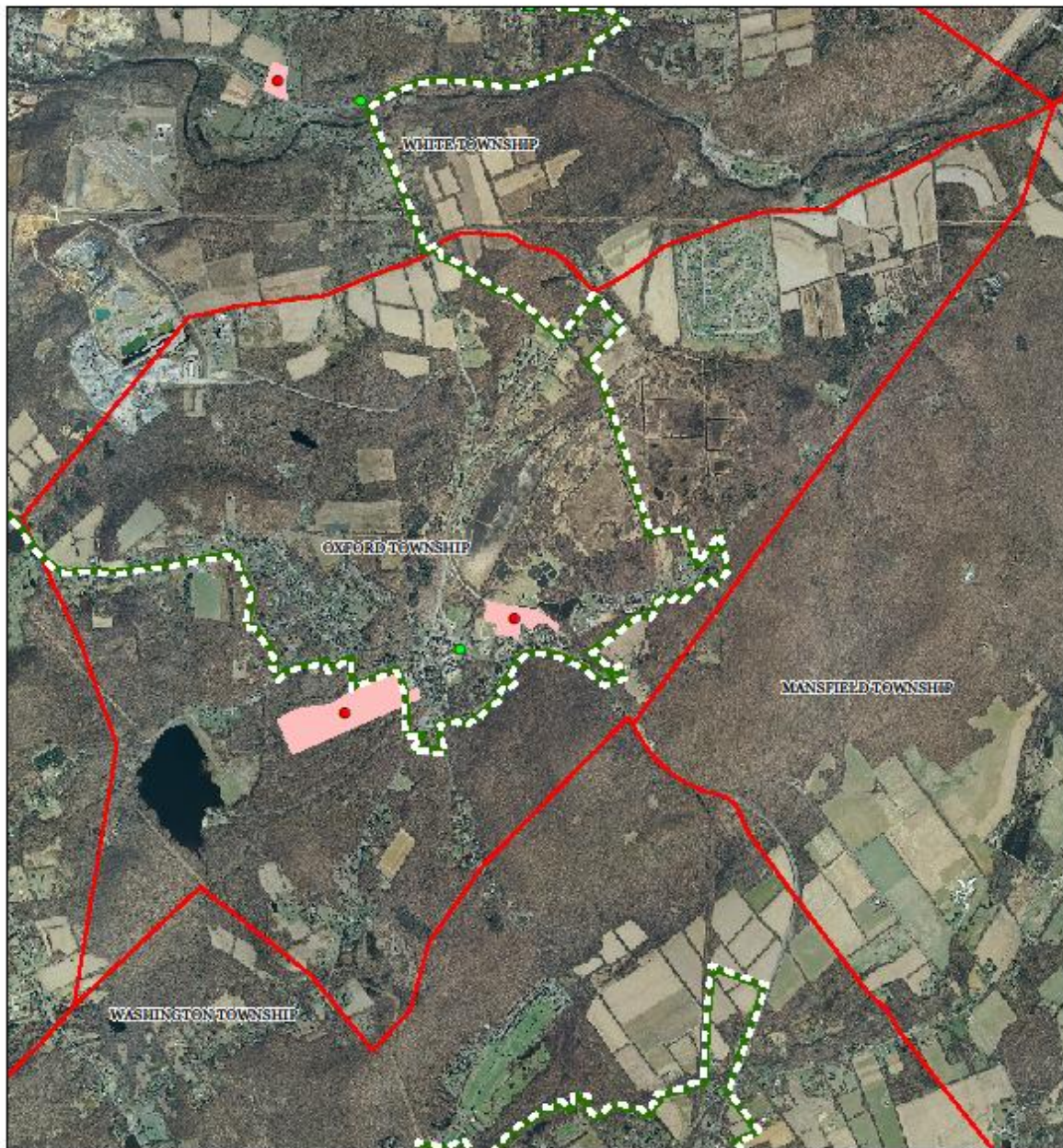


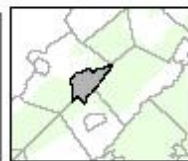
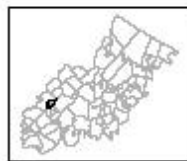
Exhibit C. Highlands Contaminated Sites Inventory



Highlands Contaminated Site Inventory

OXFORD TOWNSHIP

- Tier 1 Sites
- Tier 1 Sites (Polygons)
- Tier 2 Sites
- Preservation Area
- Municipal Boundaries



1 inch = 0.483 miles



Exhibit D. Forest Resource Area

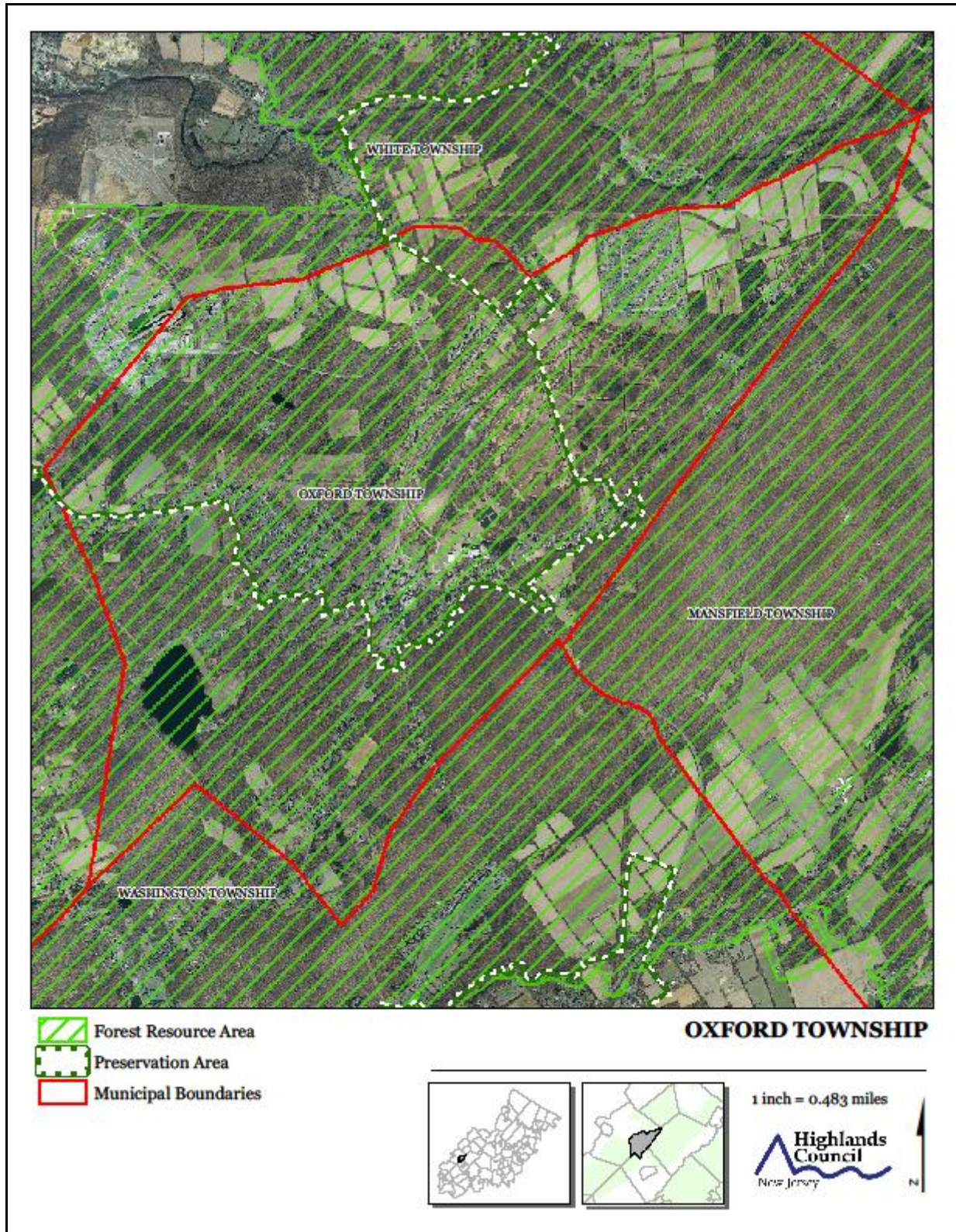


Exhibit E. Total Forest Area

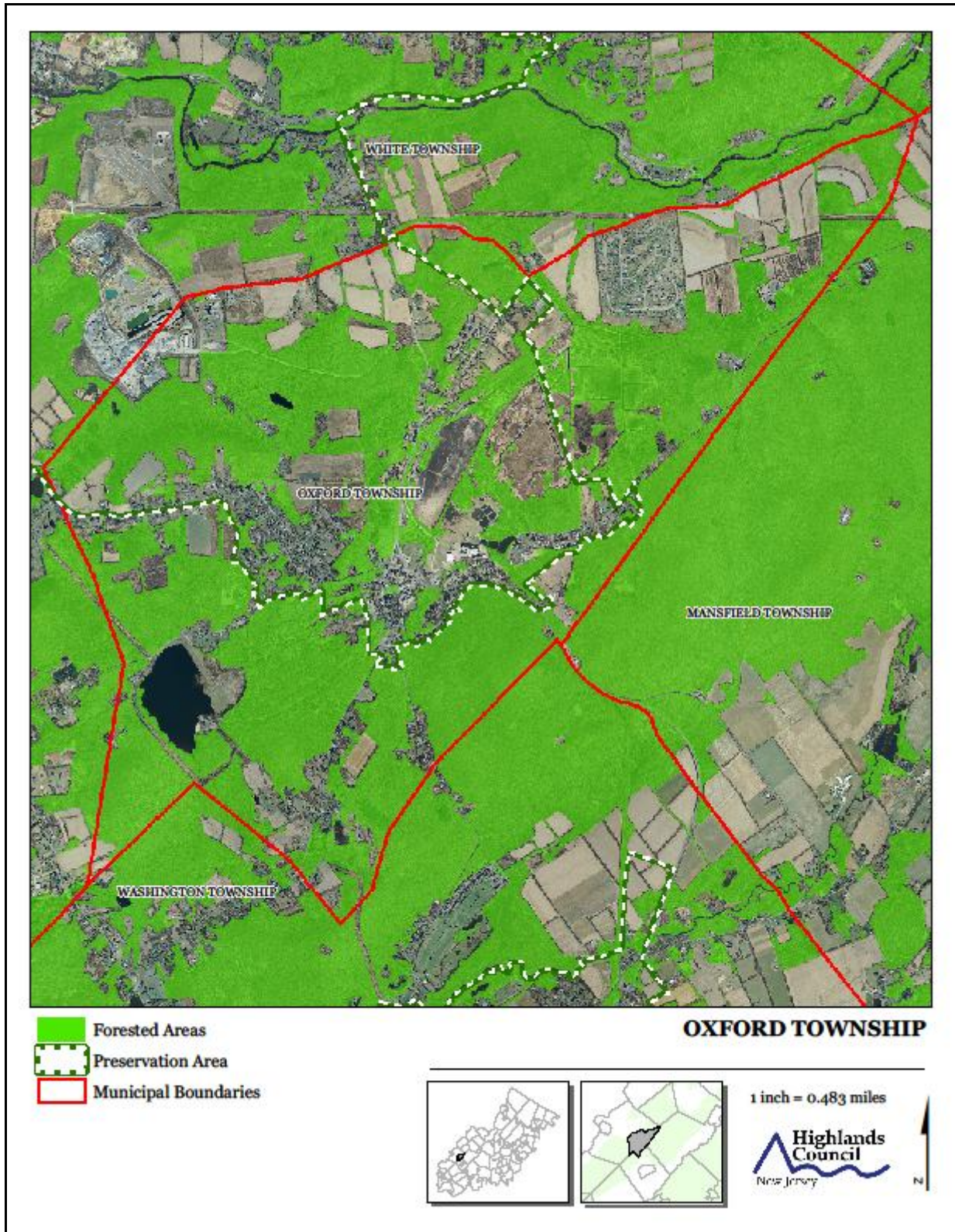


Exhibit F. Forest Subwatersheds

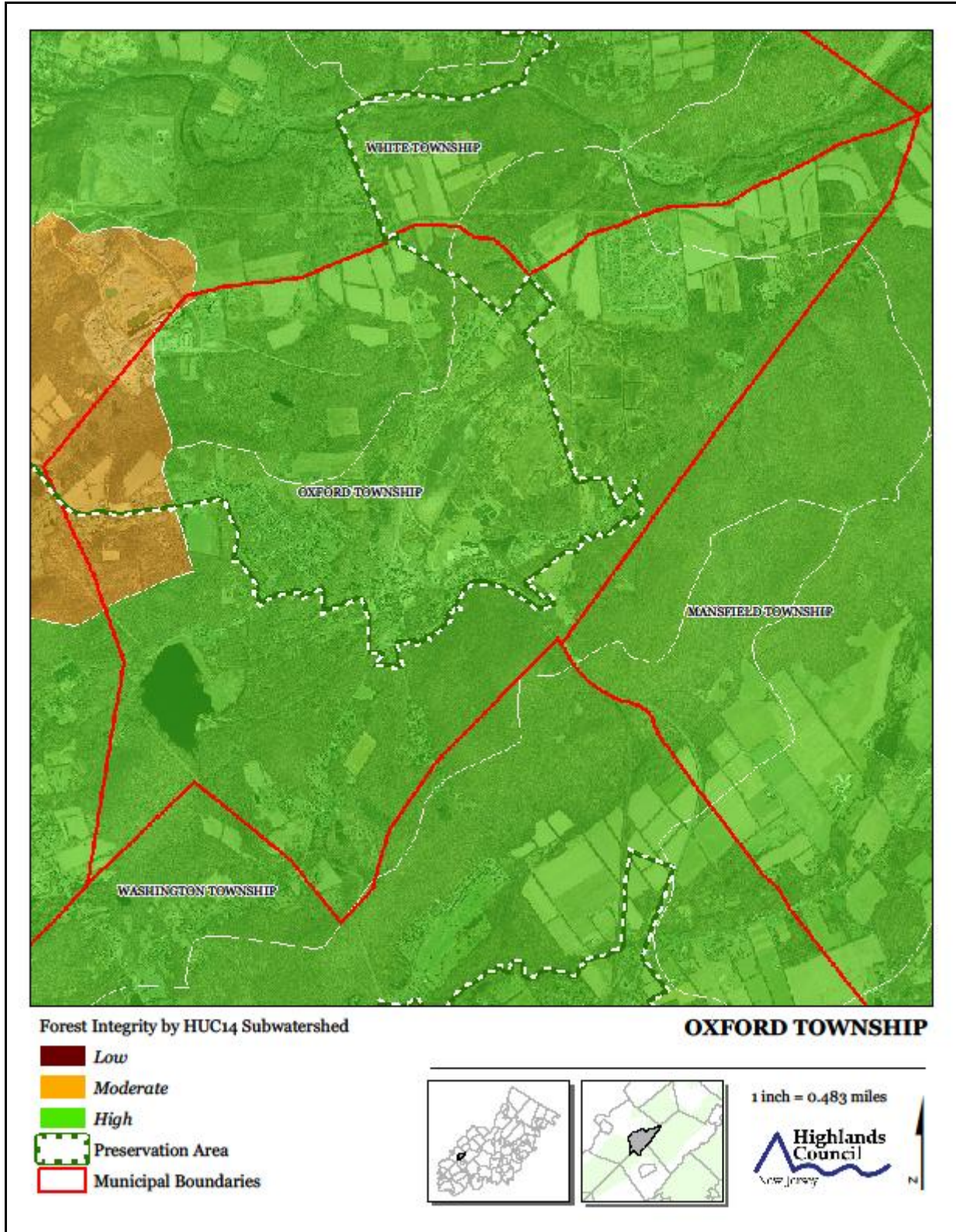


Exhibit G. Highlands Open Waters

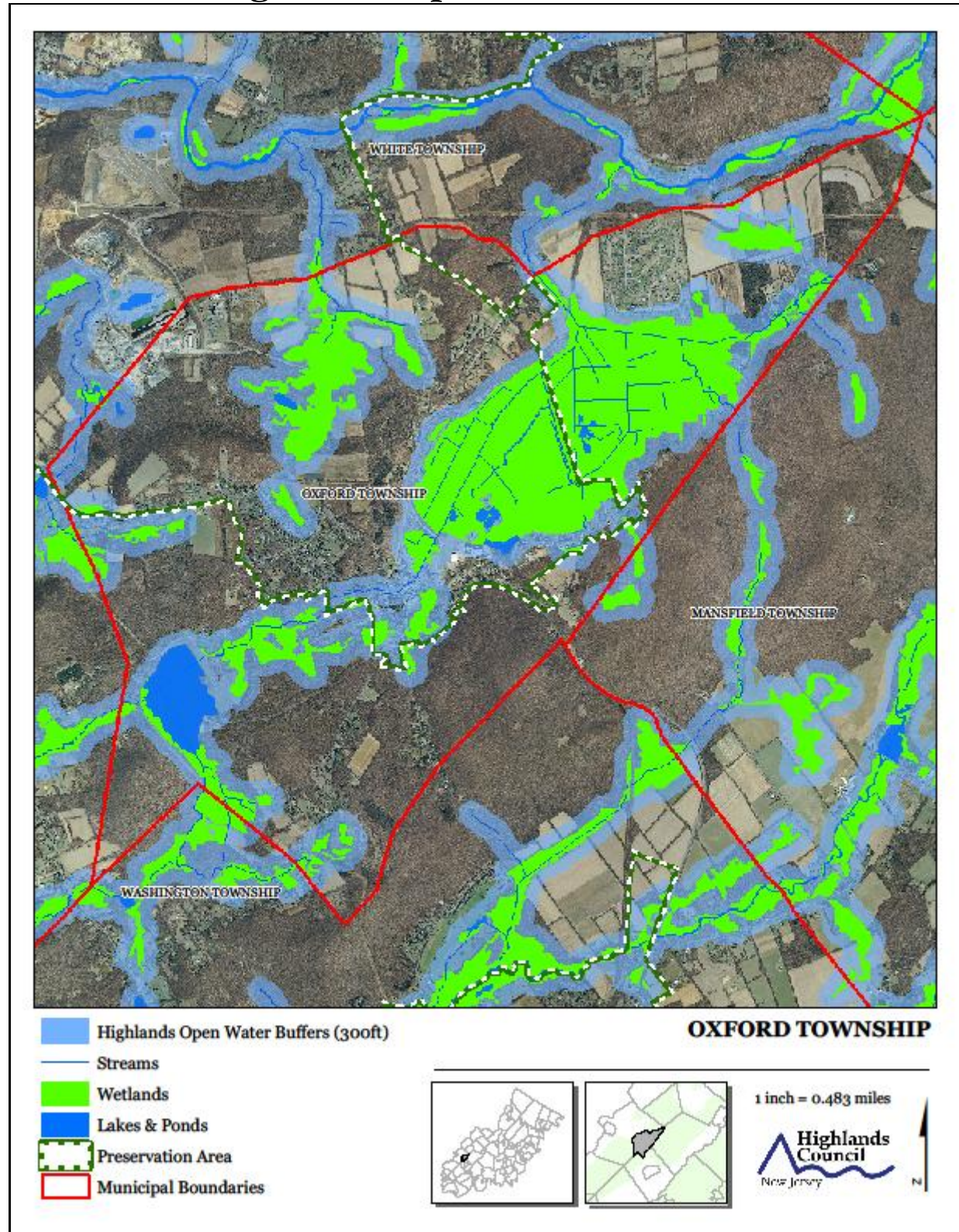


Exhibit H. Highlands Riparian Areas

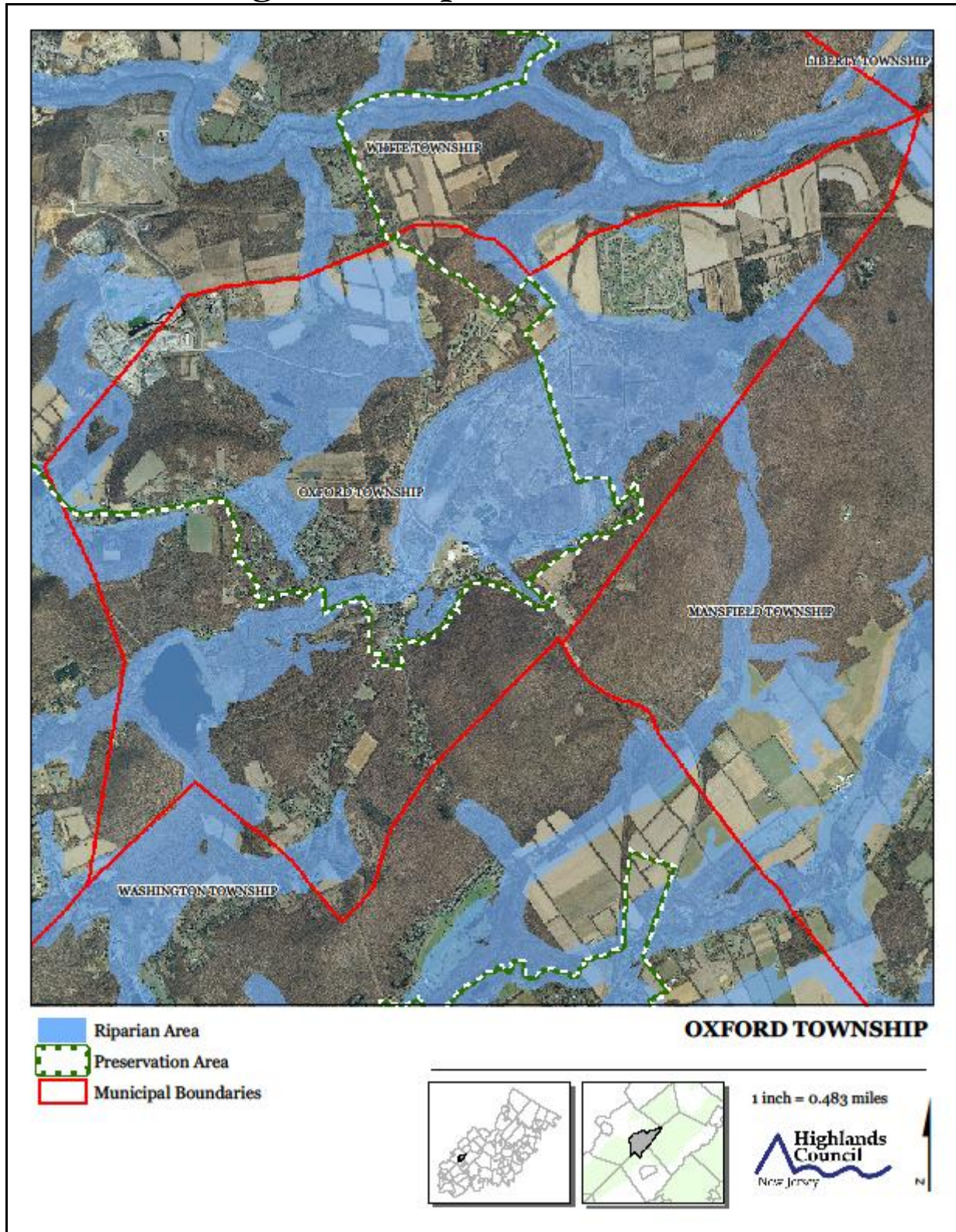


Exhibit I. Watershed Values

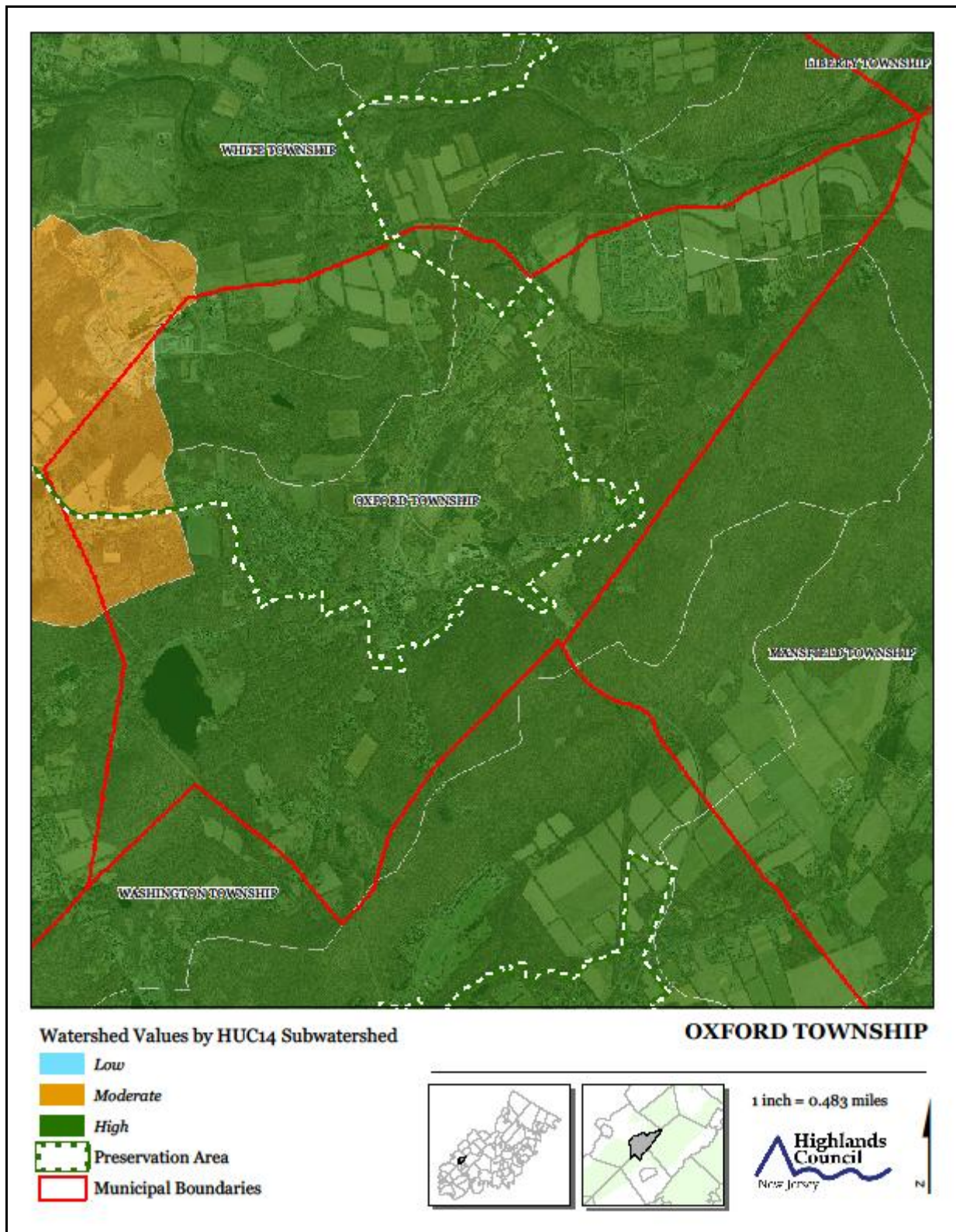


Exhibit J. Riparian Integrity

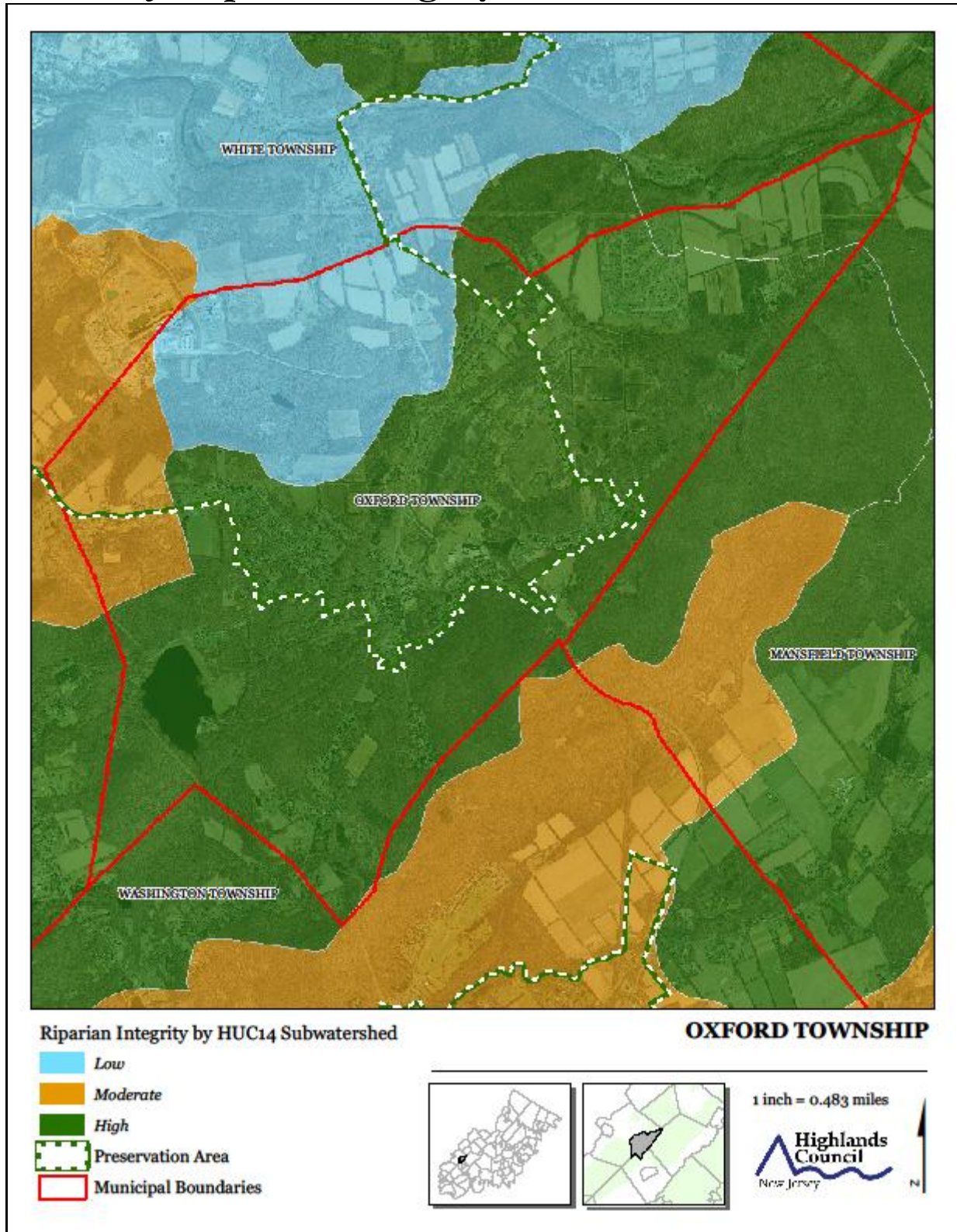


Exhibit K. Steep Slope Protection Areas

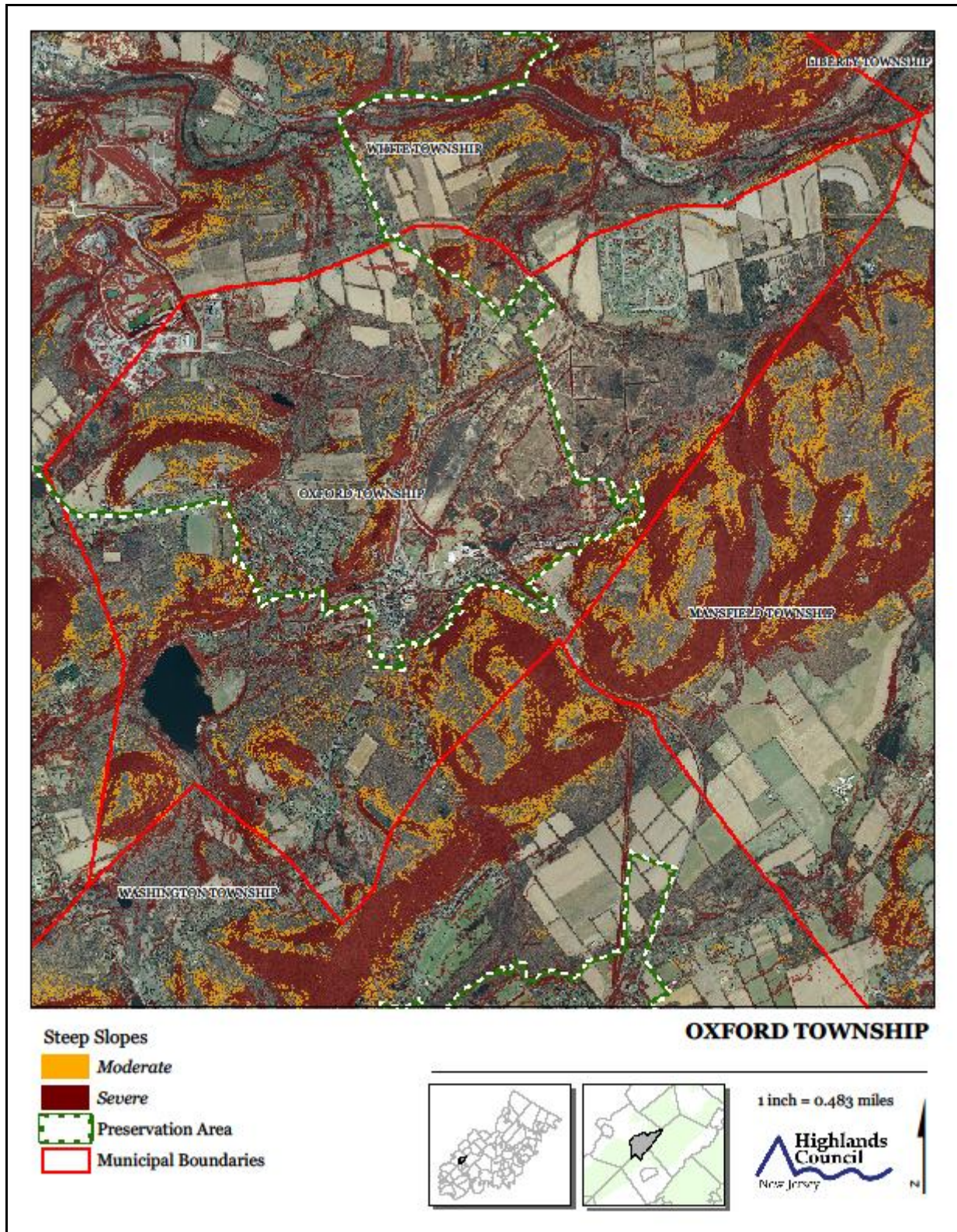


Exhibit L. Critical Wildlife Habitat

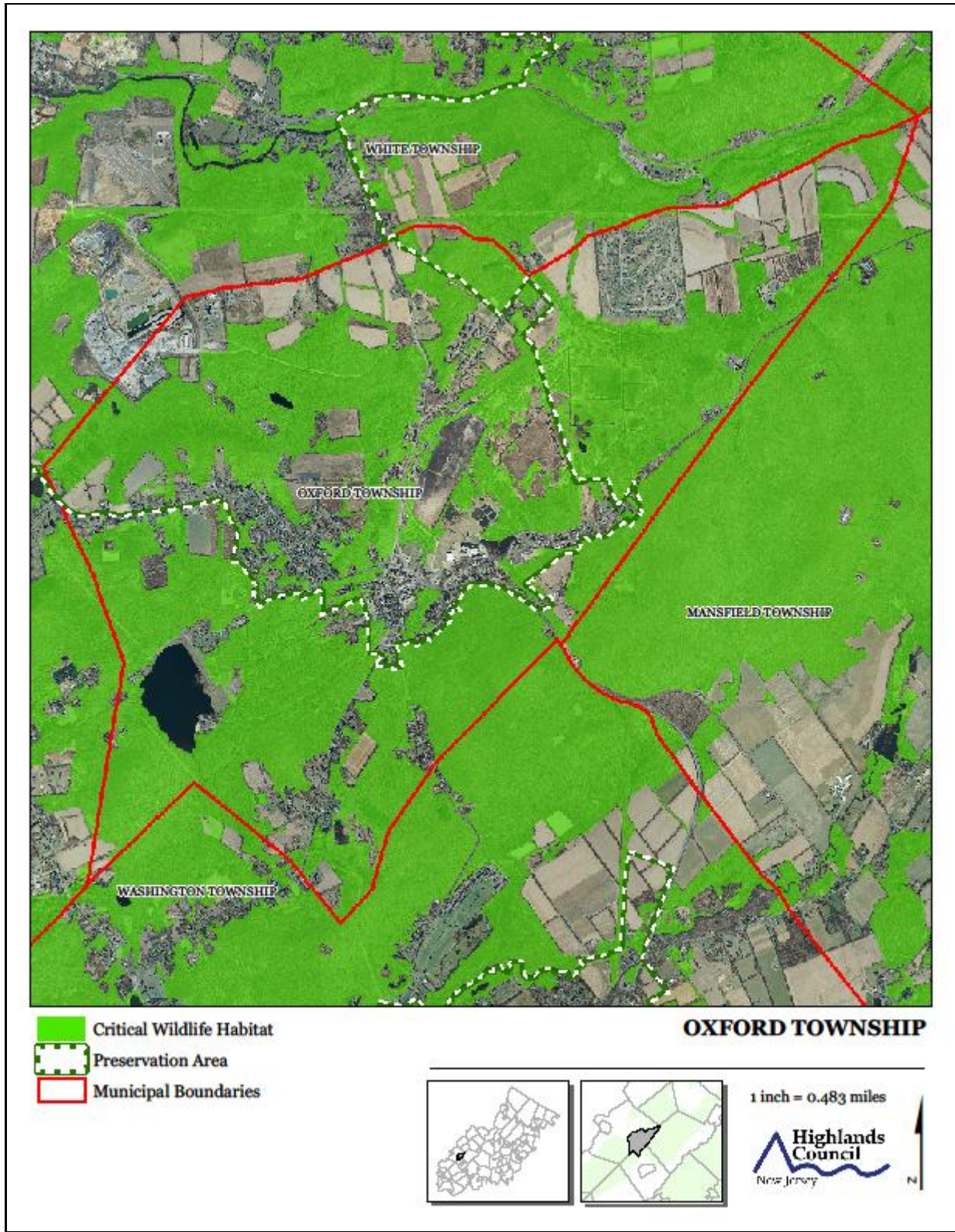
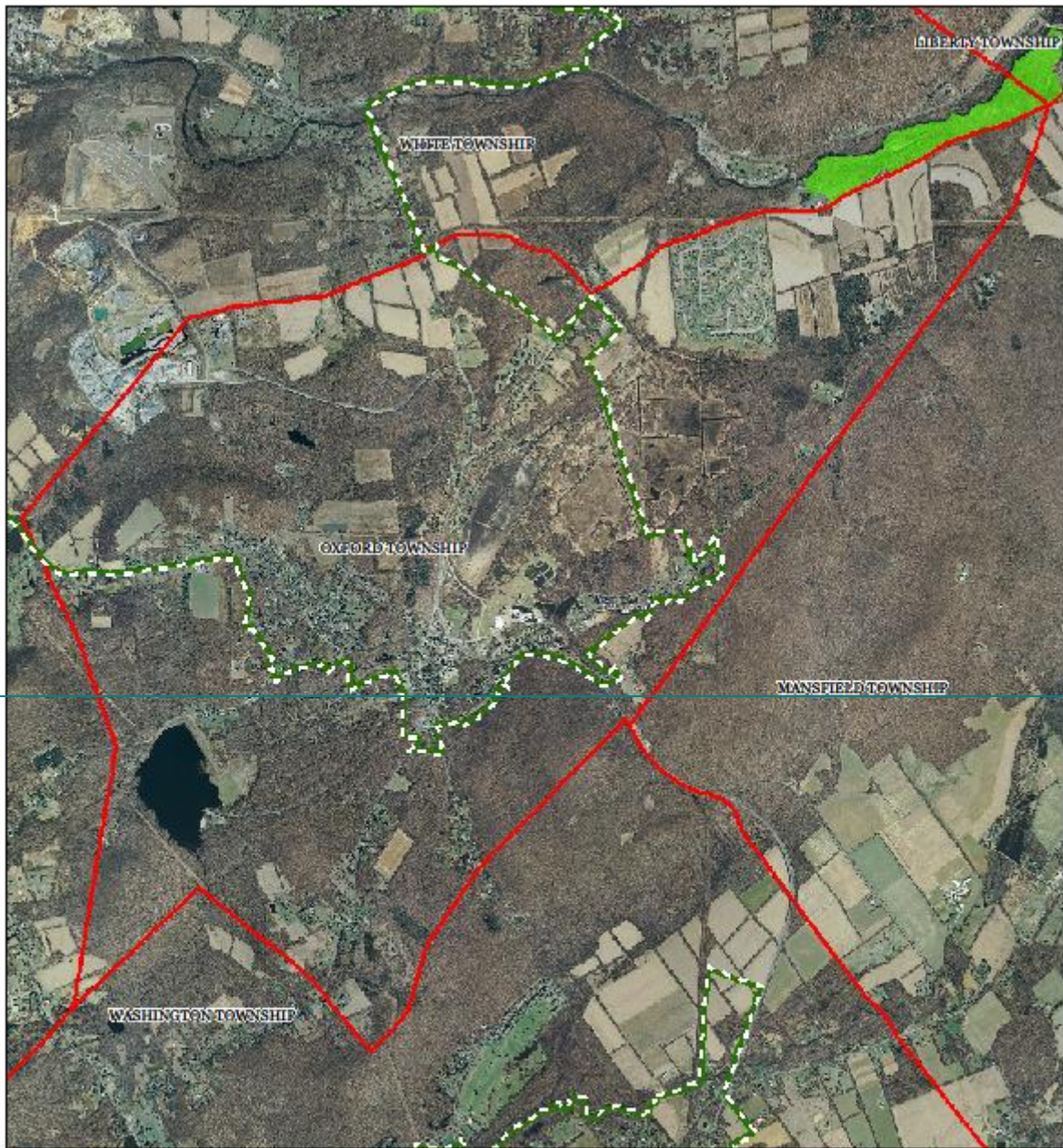



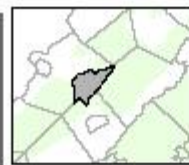


Exhibit M. Significant Natural Resources *[Reserved]*



-  Significant Natural Areas
-  Preservation Area
-  Municipal Boundaries

OXFORD TOWNSHIP






1 inch = 0.483 miles

Highlands Council
New Jersey

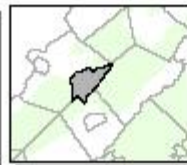


Exhibit N. Vernal Pools [Reserved]



-  Vernal Pools + 1000ft Buffer
-  Preservation Area
-  Municipal Boundaries

OXFORD TOWNSHIP



1 inch = 0.483 miles

Highlands Council
New Jersey



Exhibit O. Carbonate Rock Areas

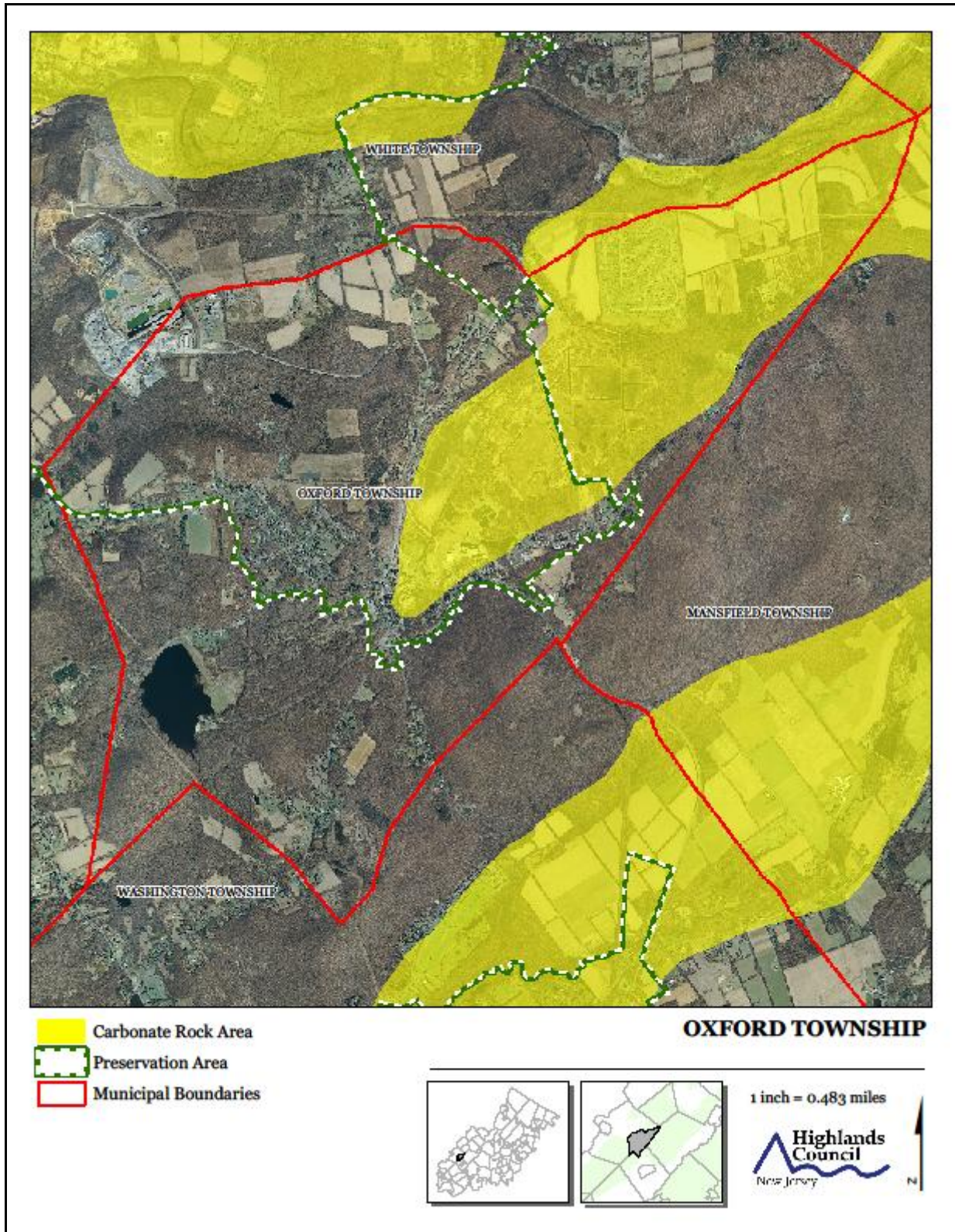


Exhibit P. Lake Management Areas

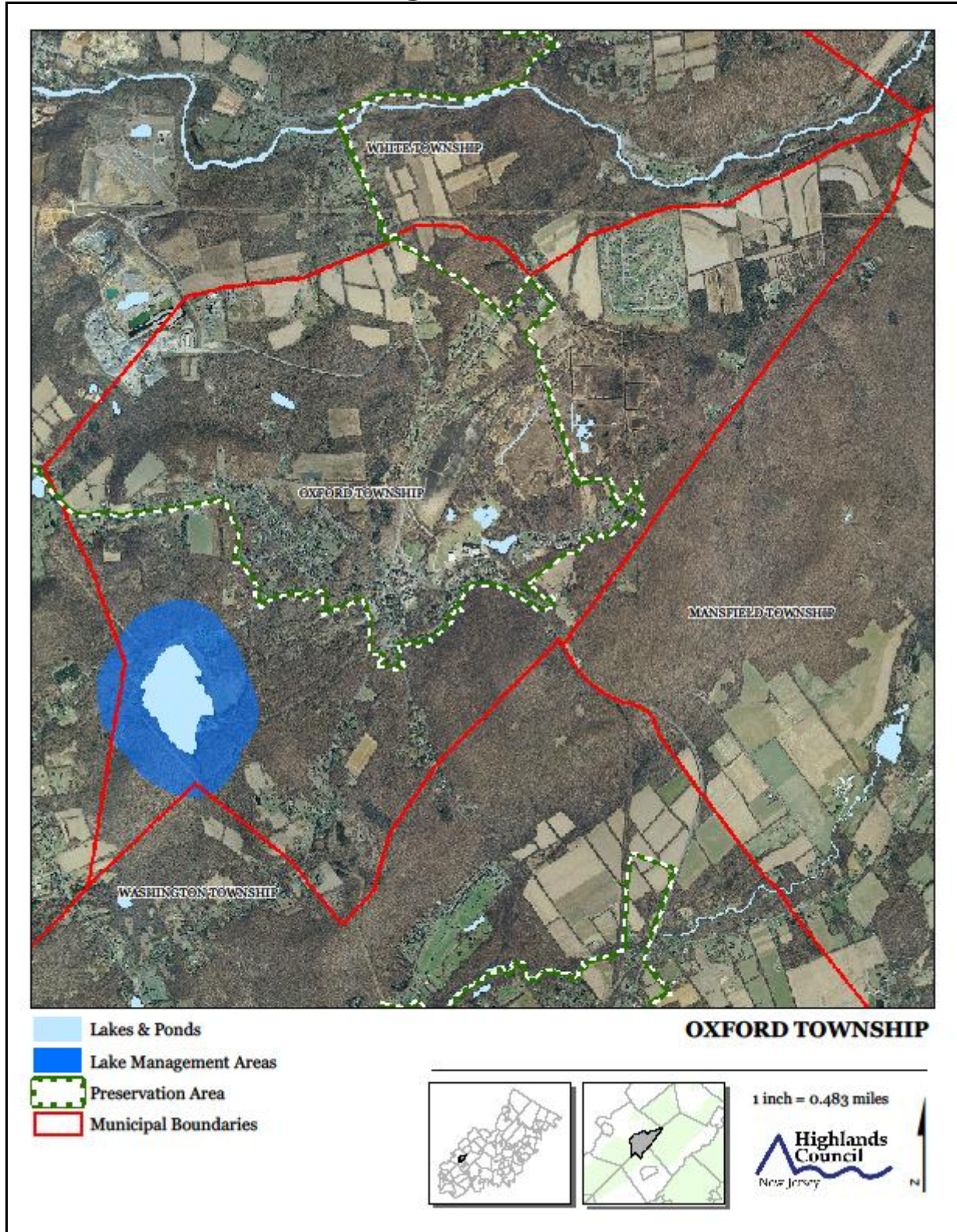


Exhibit Q. Net Water Availability

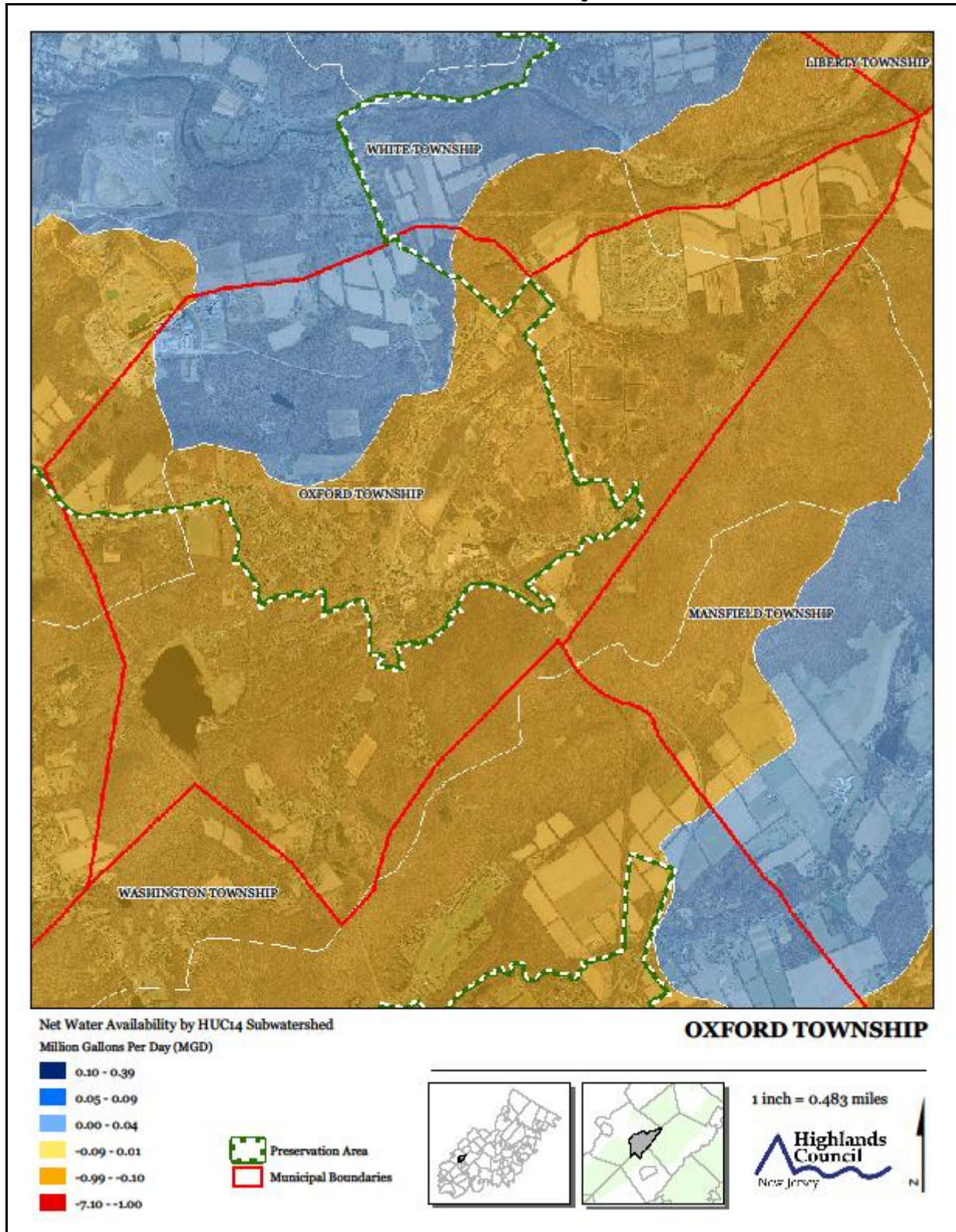


Exhibit R. Prime Ground Water Recharge Areas

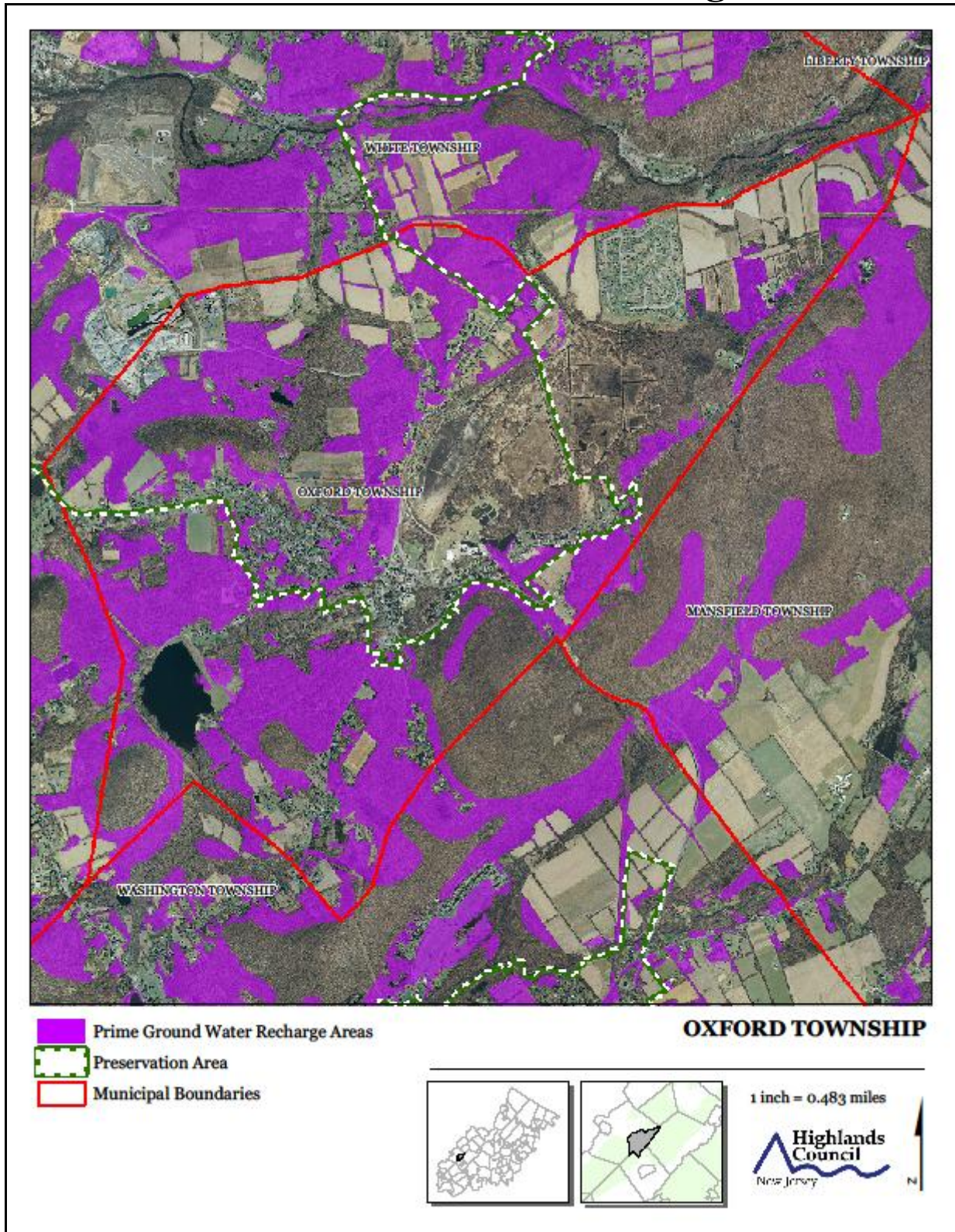


Exhibit S. HUC 14s on NJDEP Impaired Waters List

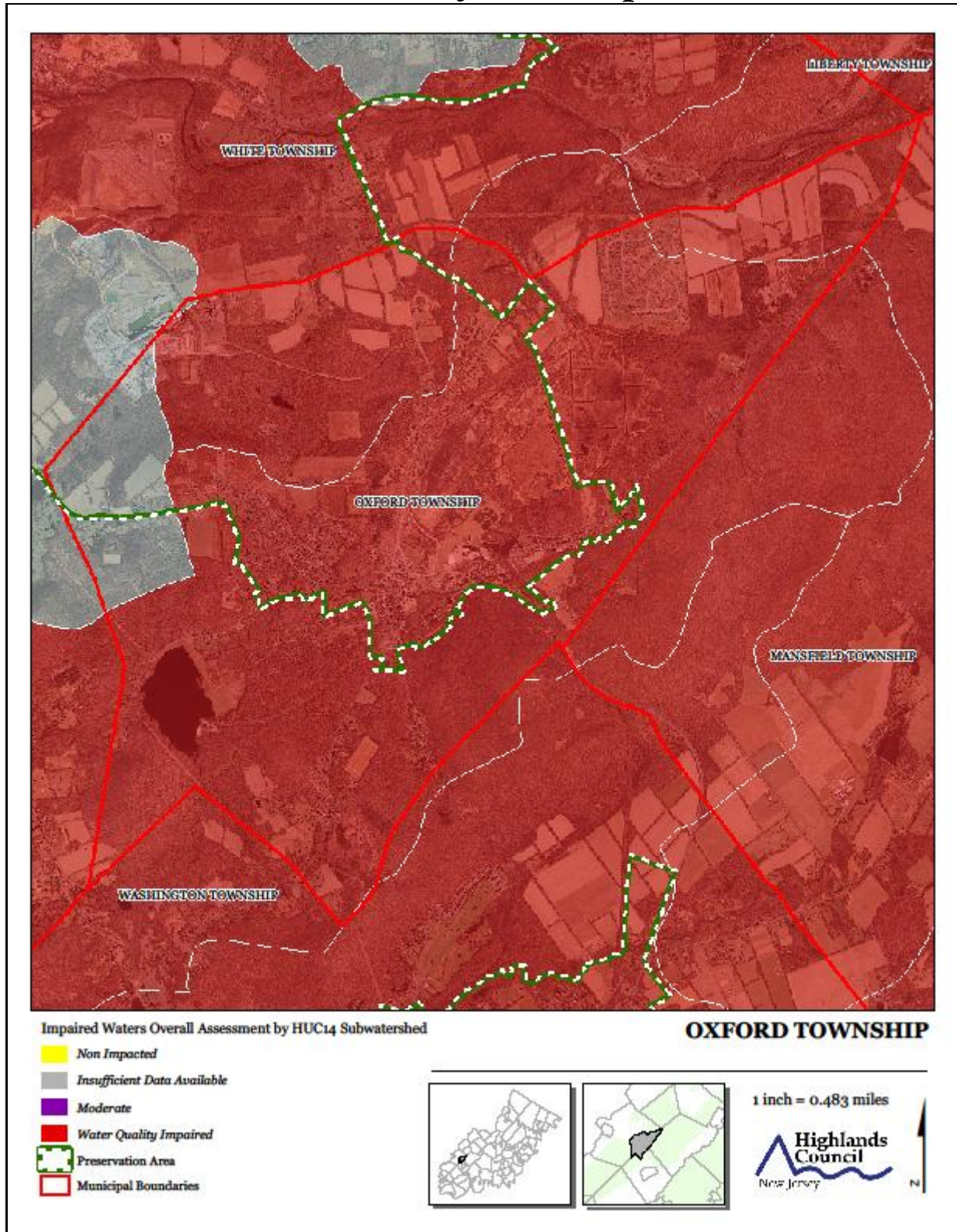


Exhibit T. Wellhead Protection Areas

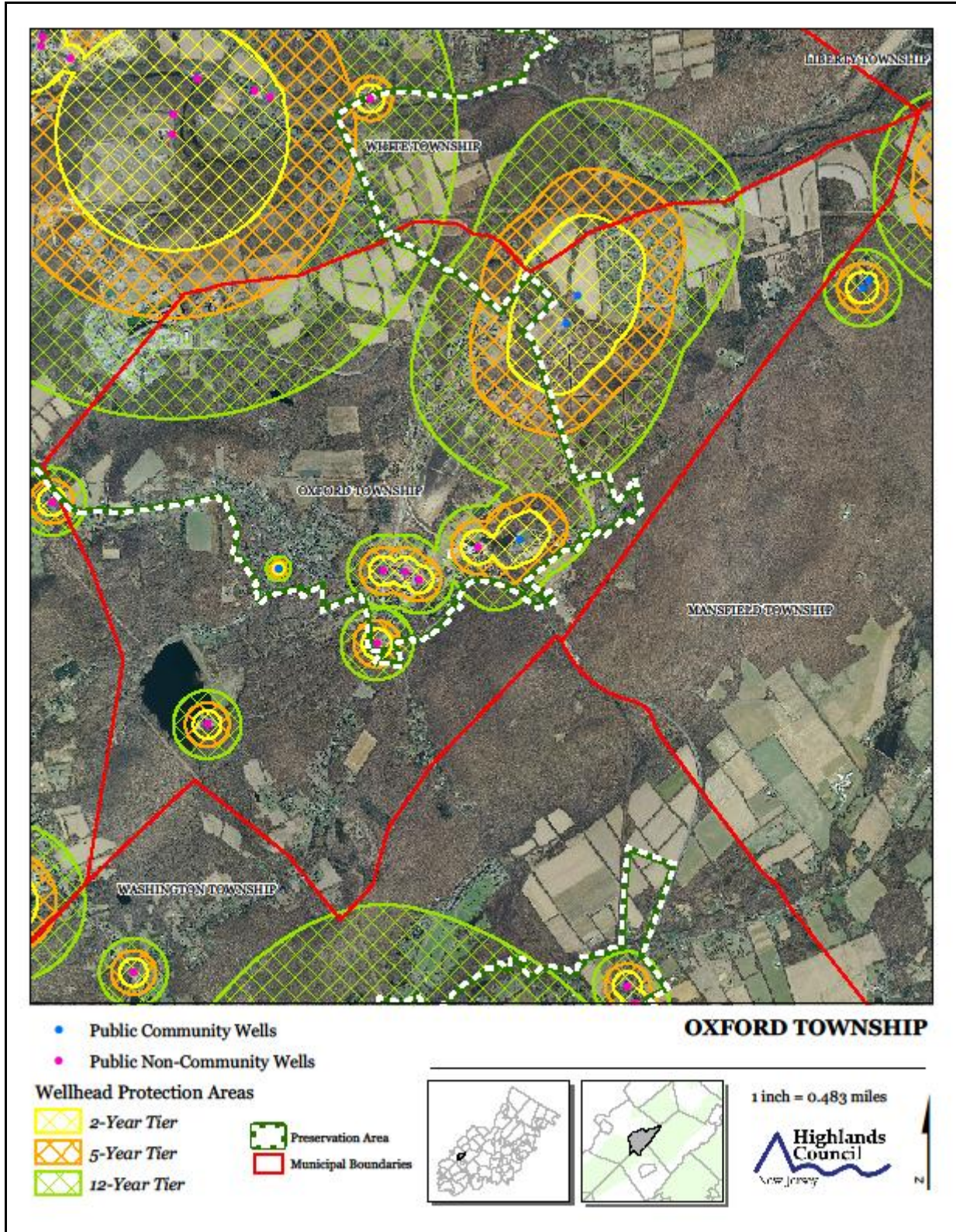


Exhibit U. Public Community Water Systems Map

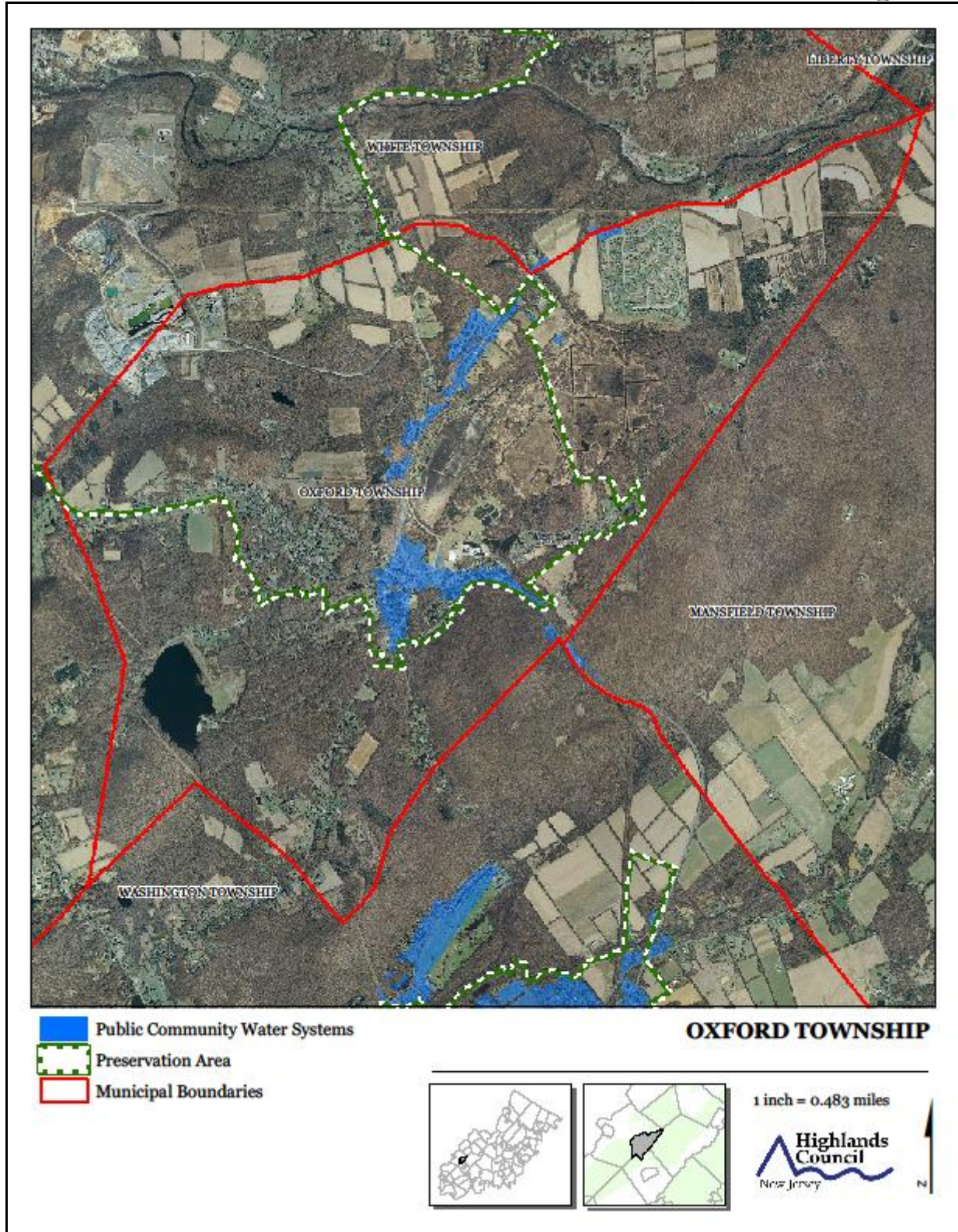


Exhibit V. Highlands Domestic Sewerage Facilities Map

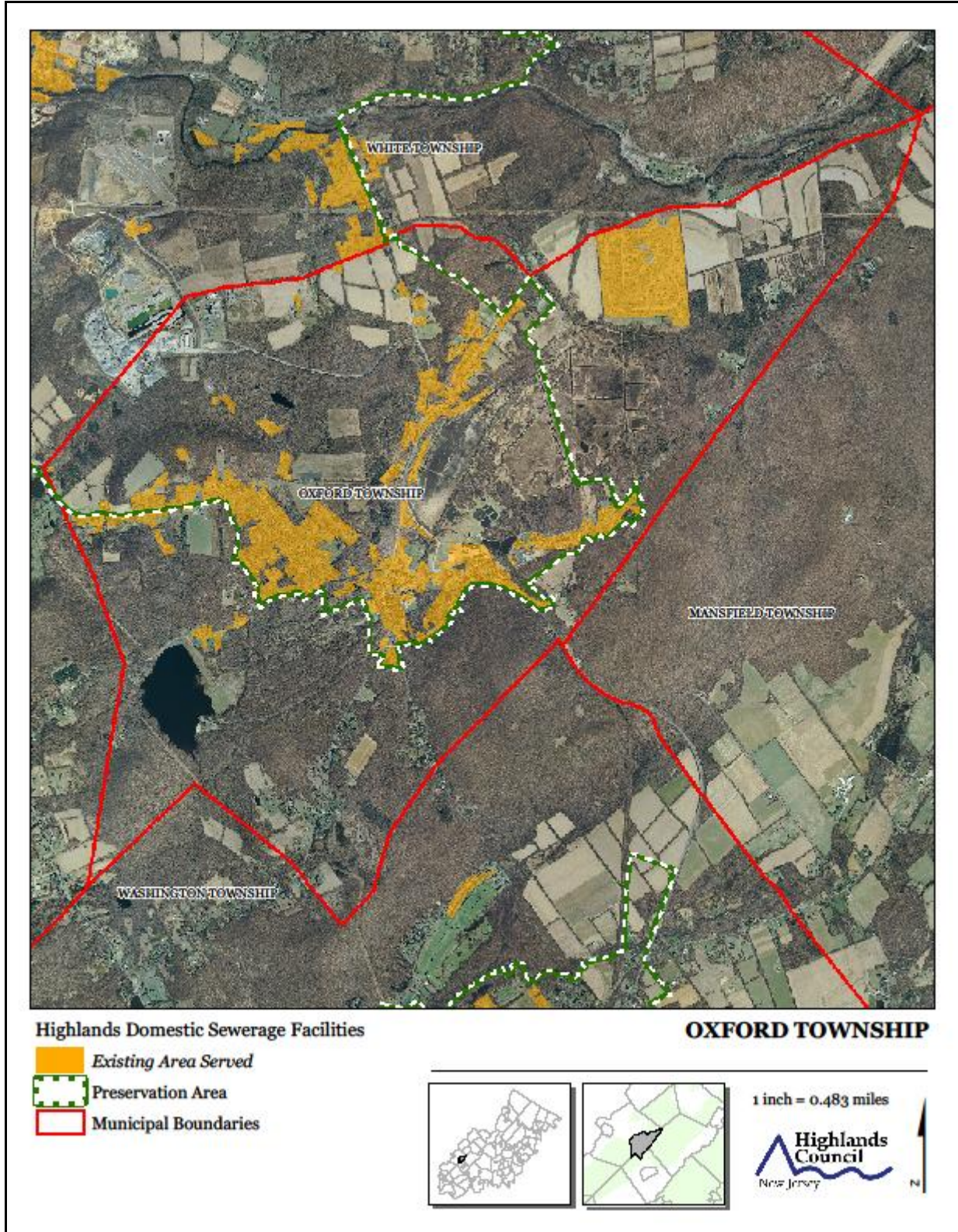


Exhibit X. Highlands Roadway Network

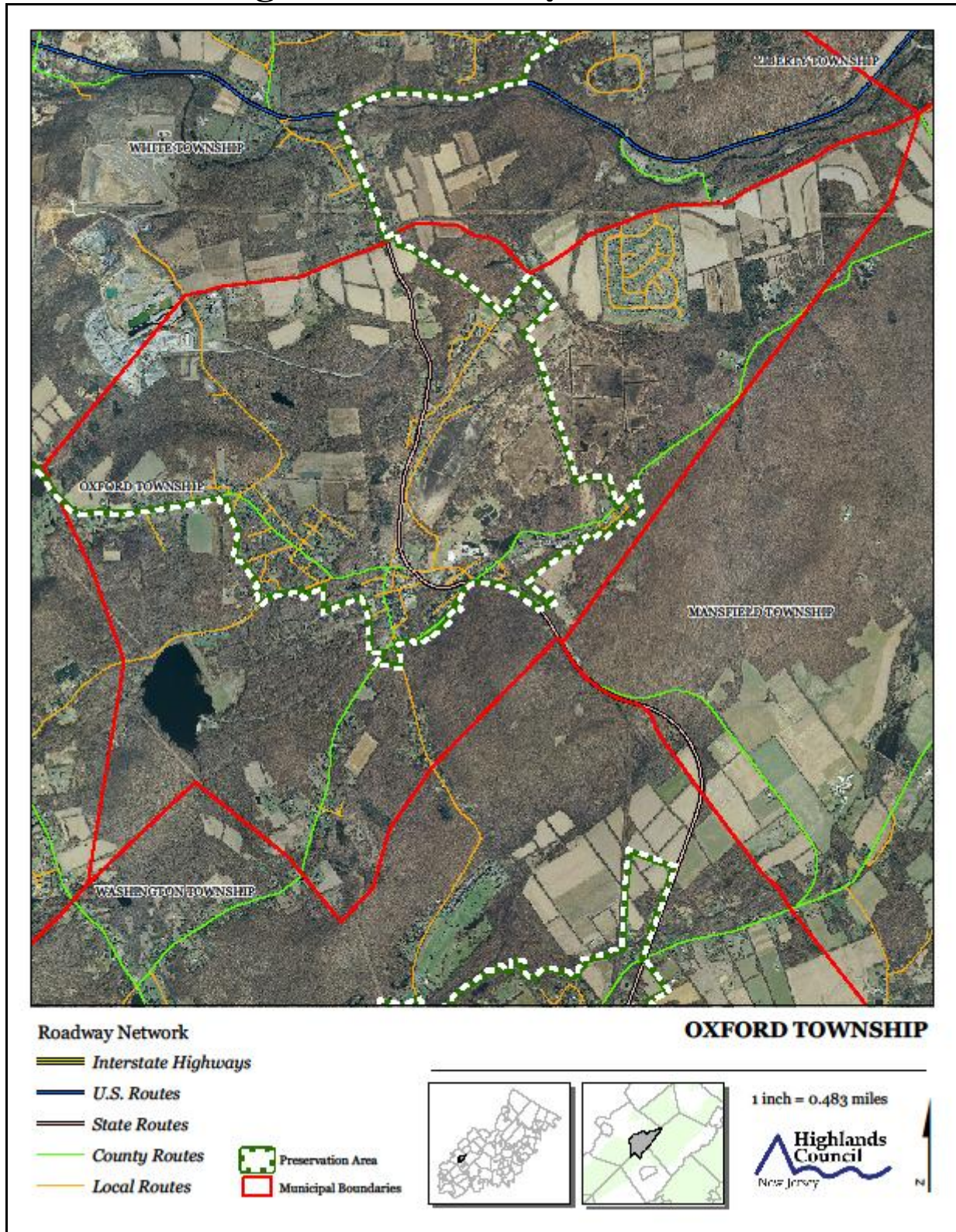


Exhibit Y. Highlands Transit Network

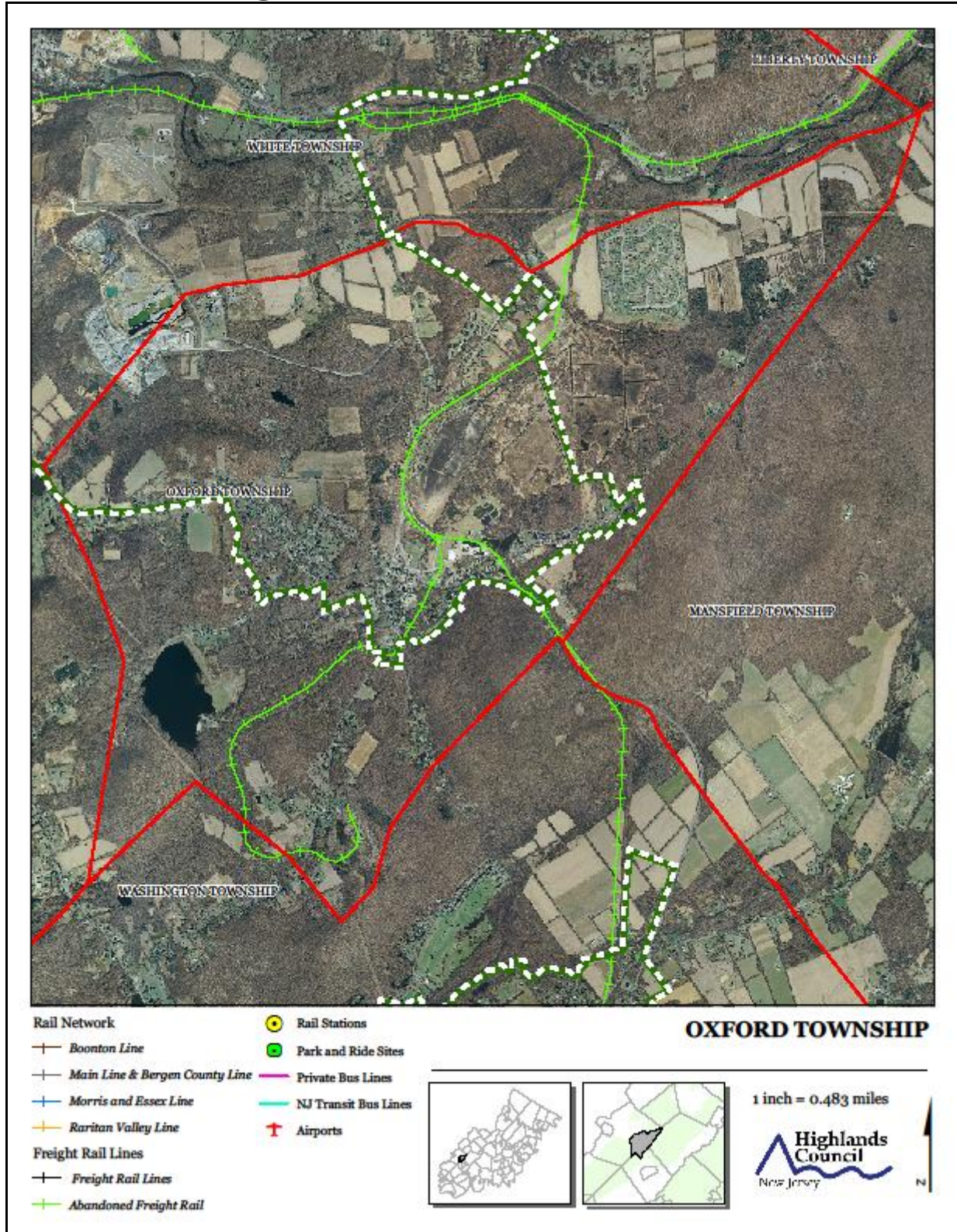


Exhibit Z. Preserved Lands

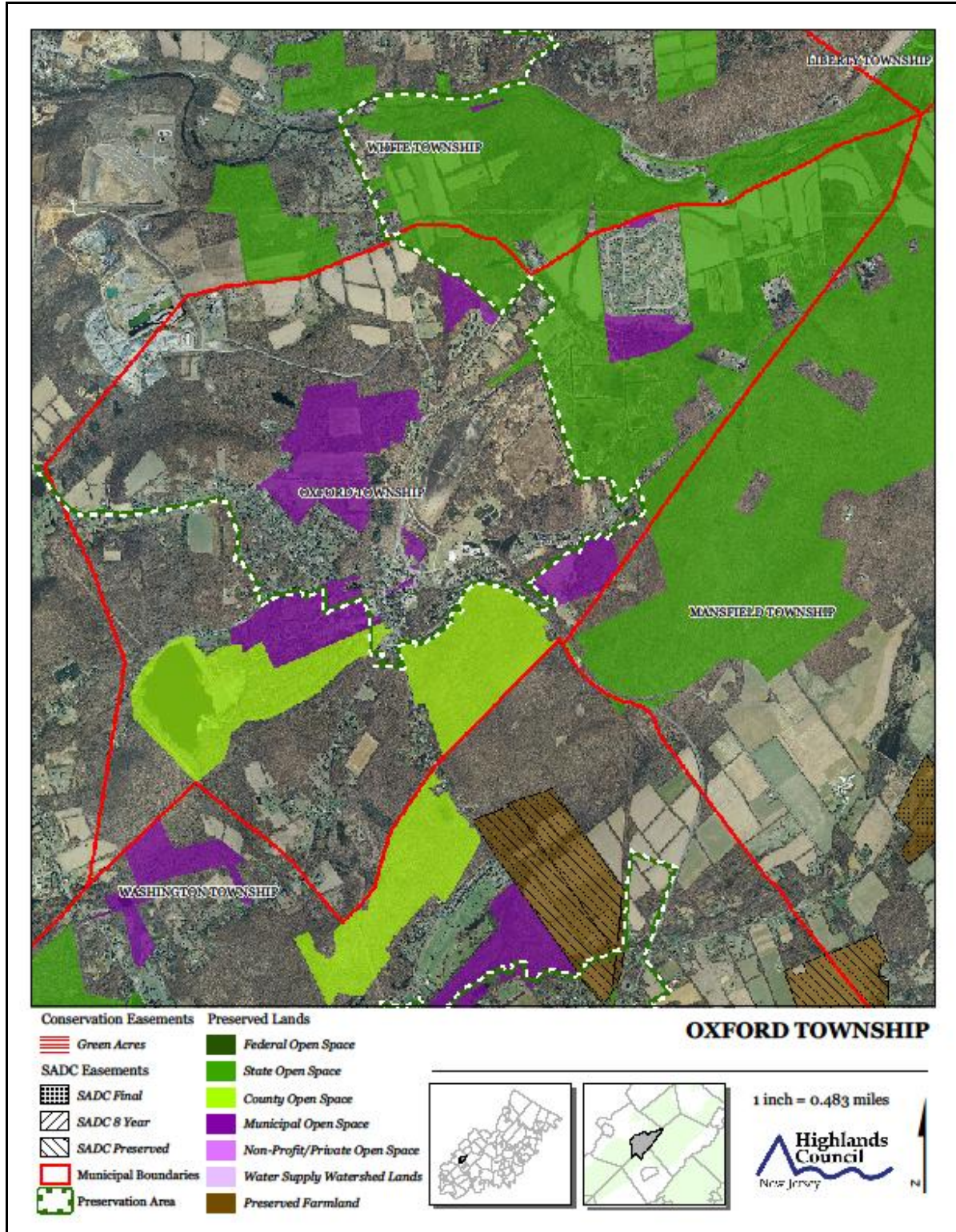


Exhibit AA. Highlands Conservation Priority Areas

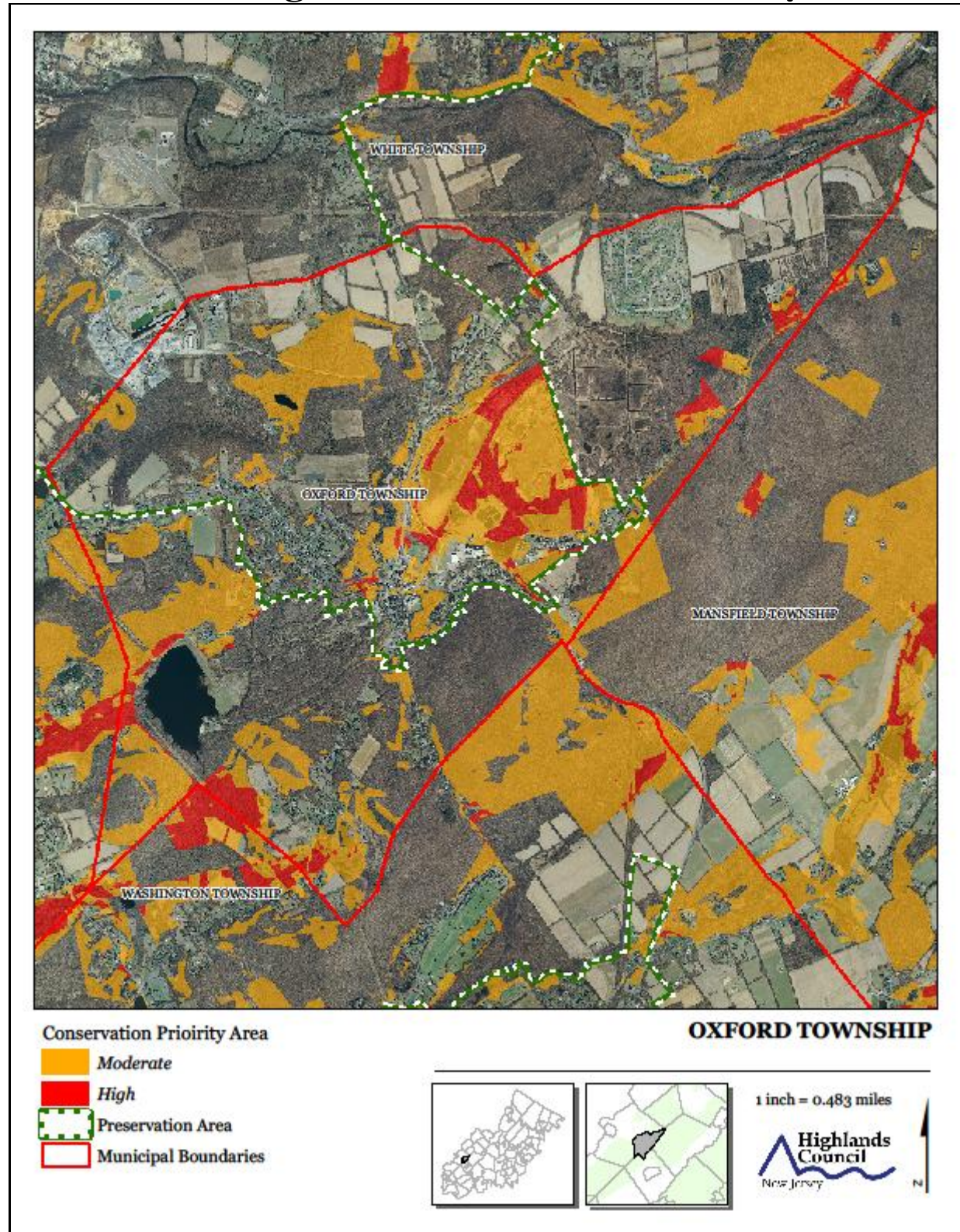


Exhibit BB. Highlands Special Environmental Zone

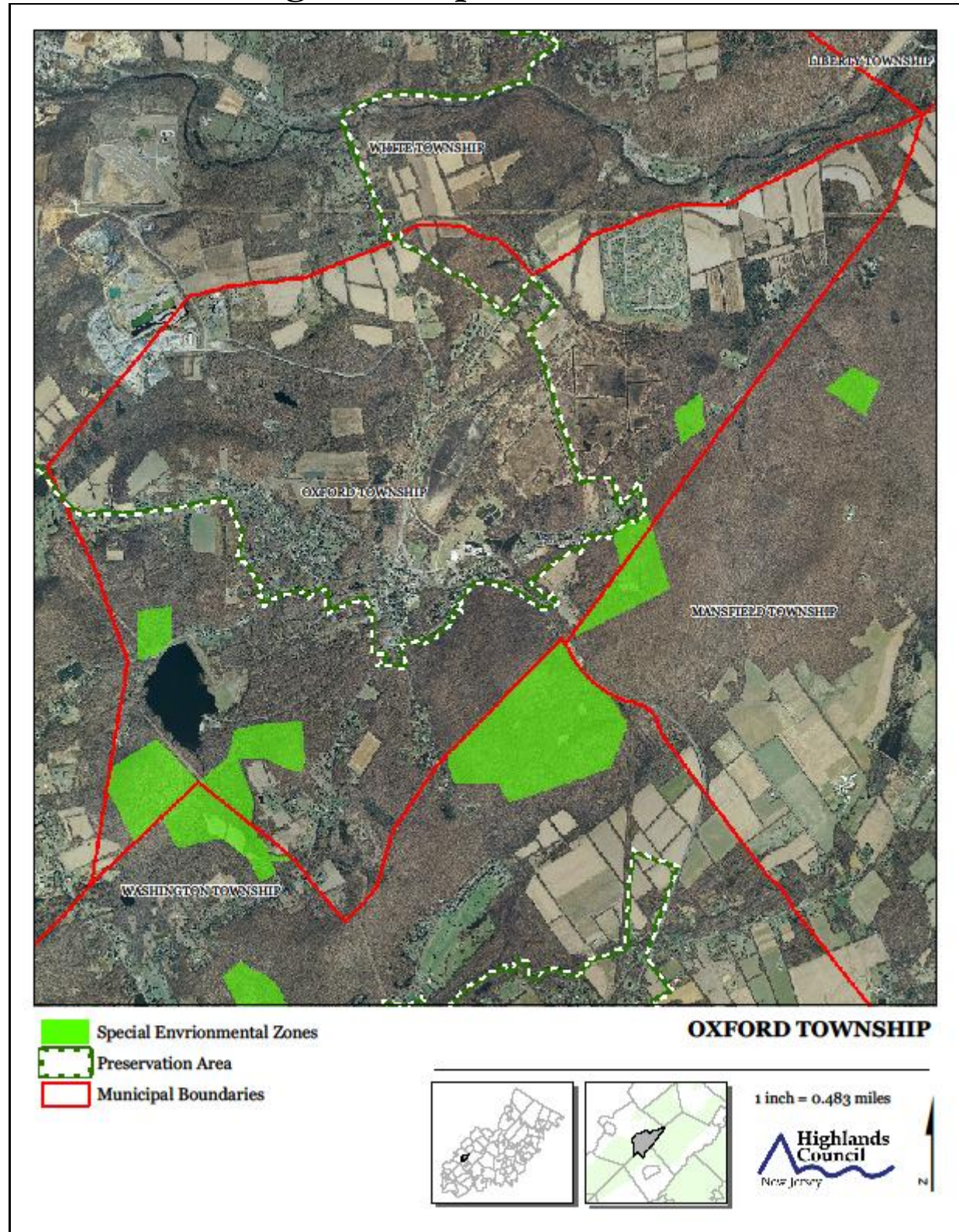


Exhibit CC. Preserved Farms, SADC Easements, All Agricultural Uses

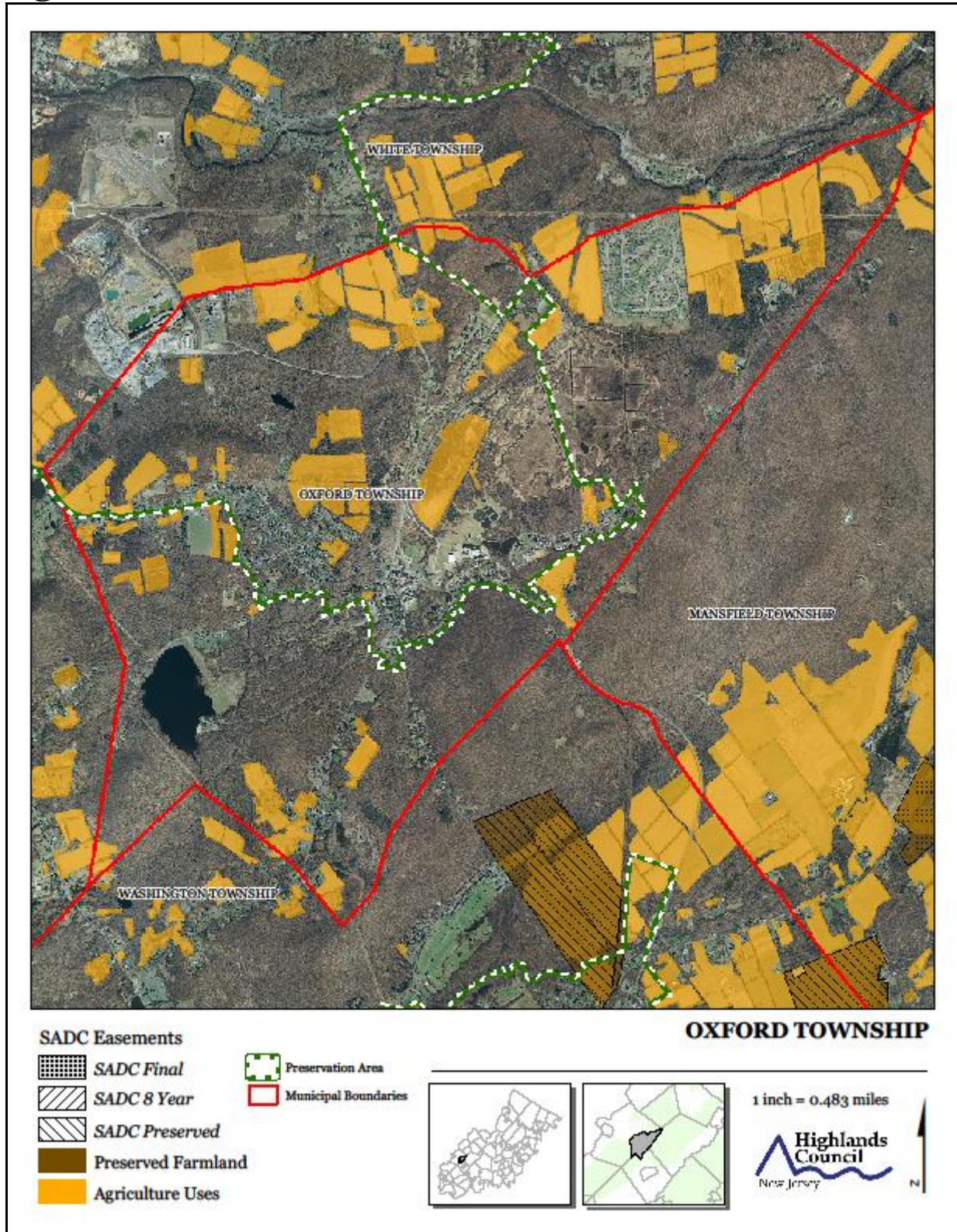
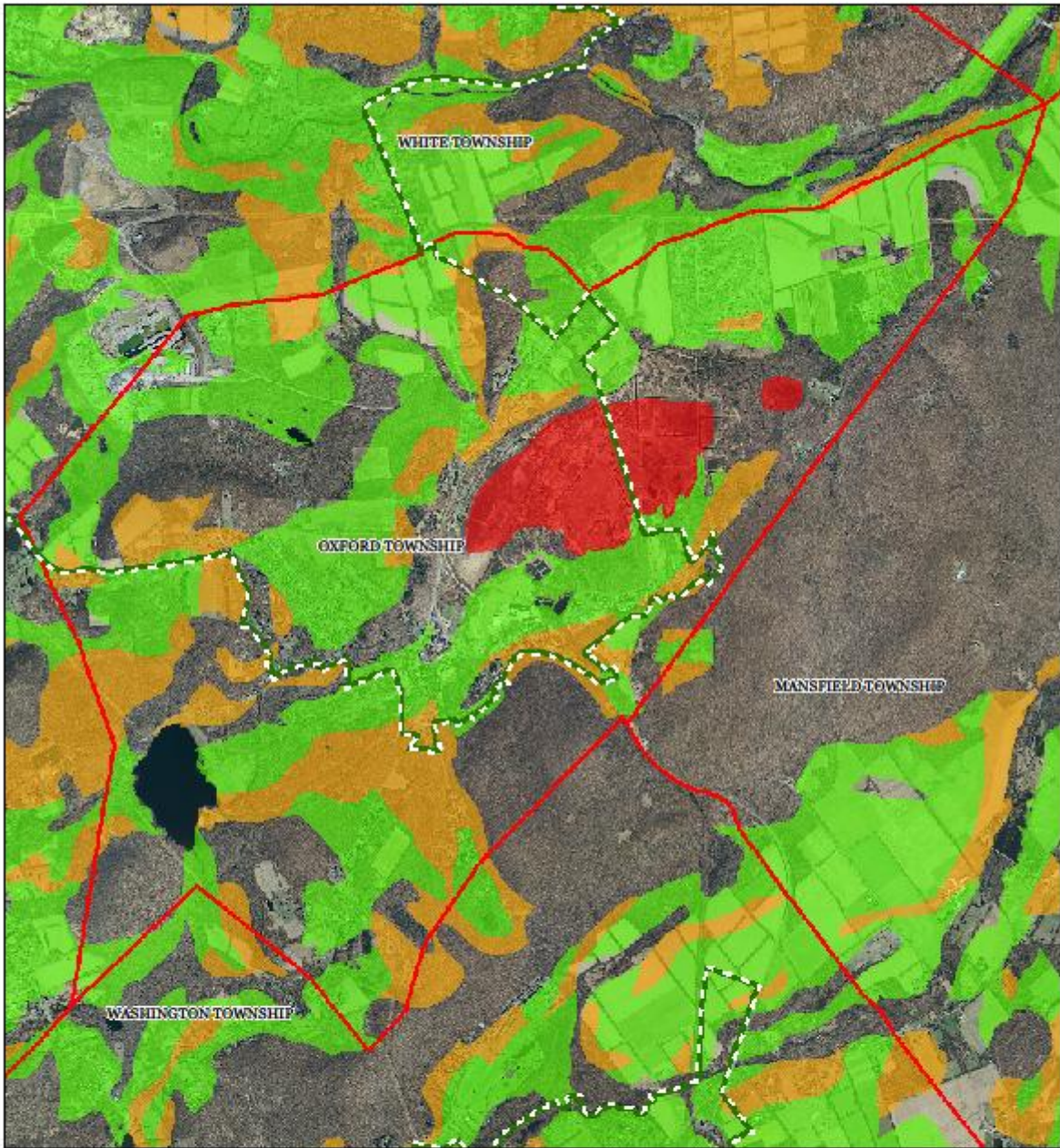
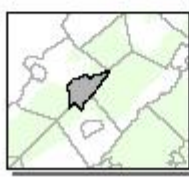


Exhibit DD. Important Farmland Soils



- Important Farmland Soils**
- Prime Farmland
 - Farmland of Local Importance
 - Farmland of Statewide Importance
 - Farmland of Unique Importance
 - Preservation Area
 - Municipal Boundaries

OXFORD TOWNSHIP



1 inch = 0.483 miles



Exhibit EE. Agricultural Resource Area

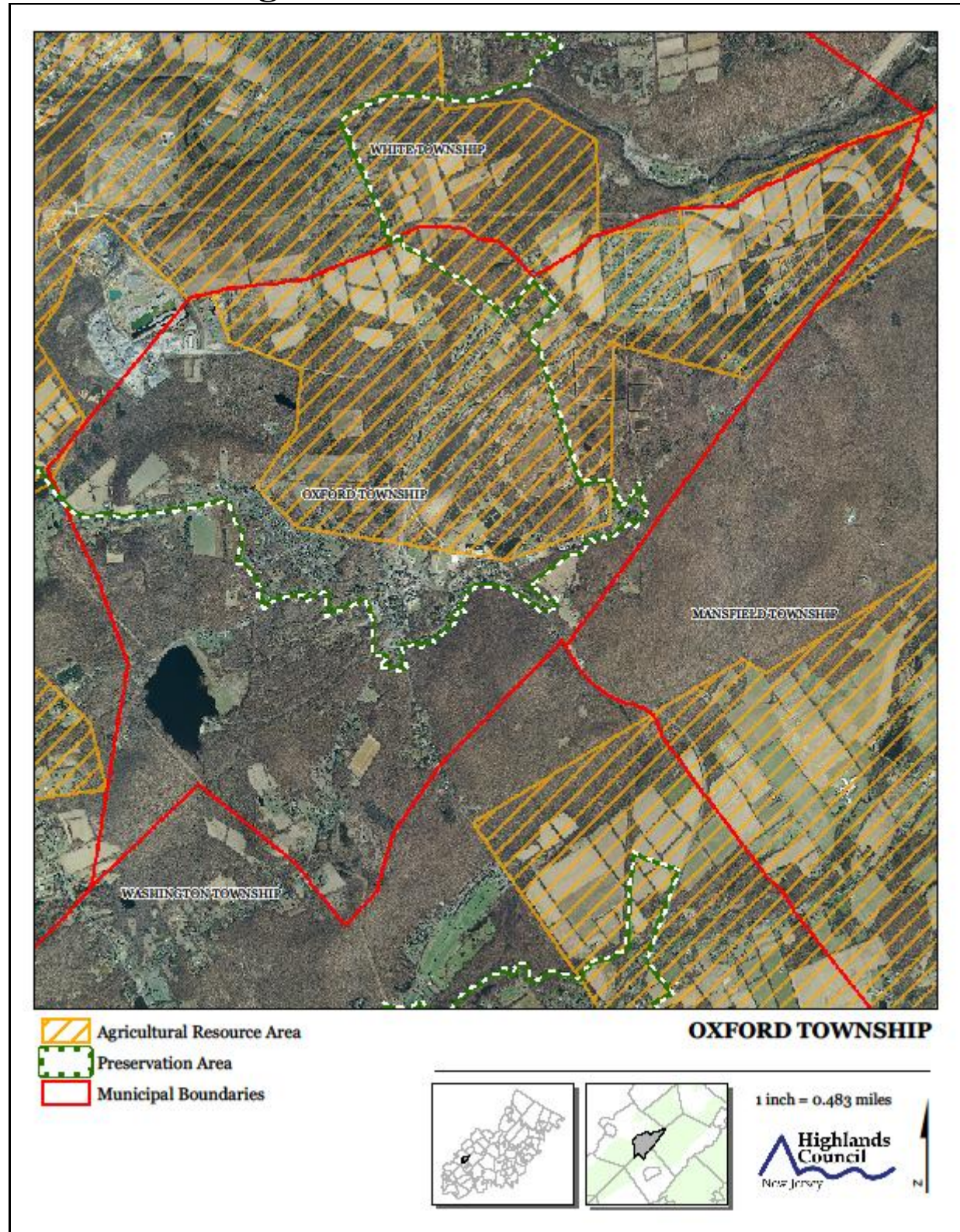
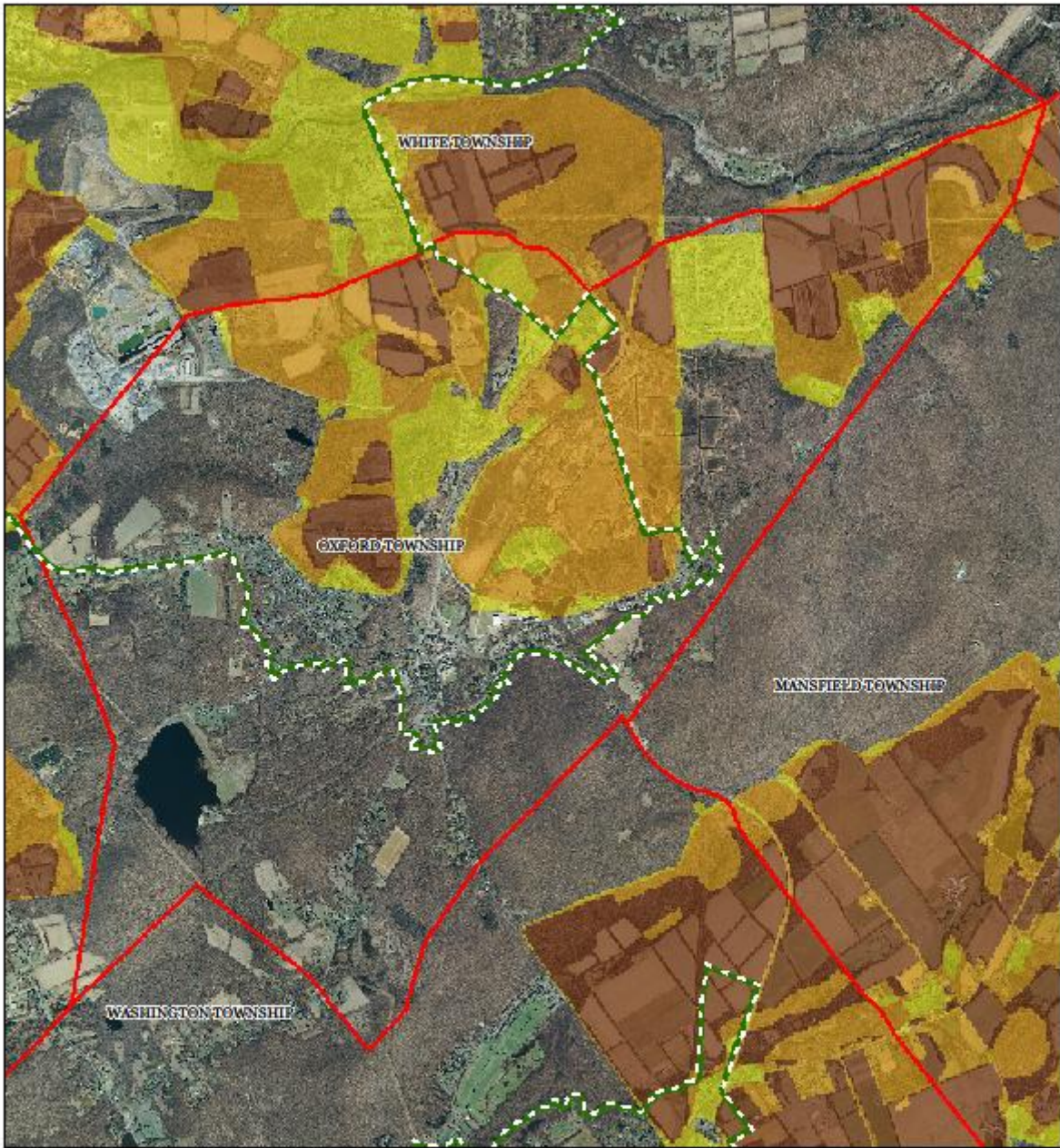







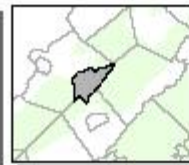
Exhibit FF. Highlands Agricultural Priority Area



Agricultural Priority Area

-  Low
-  Moderate
-  High
-  Preservation Area
-  Municipal Boundaries

OXFORD TOWNSHIP



1 inch = 0.483 miles

Highlands Council
New Jersey



Exhibit GG. Historic, Cultural, and Archaeological Resources Inventory

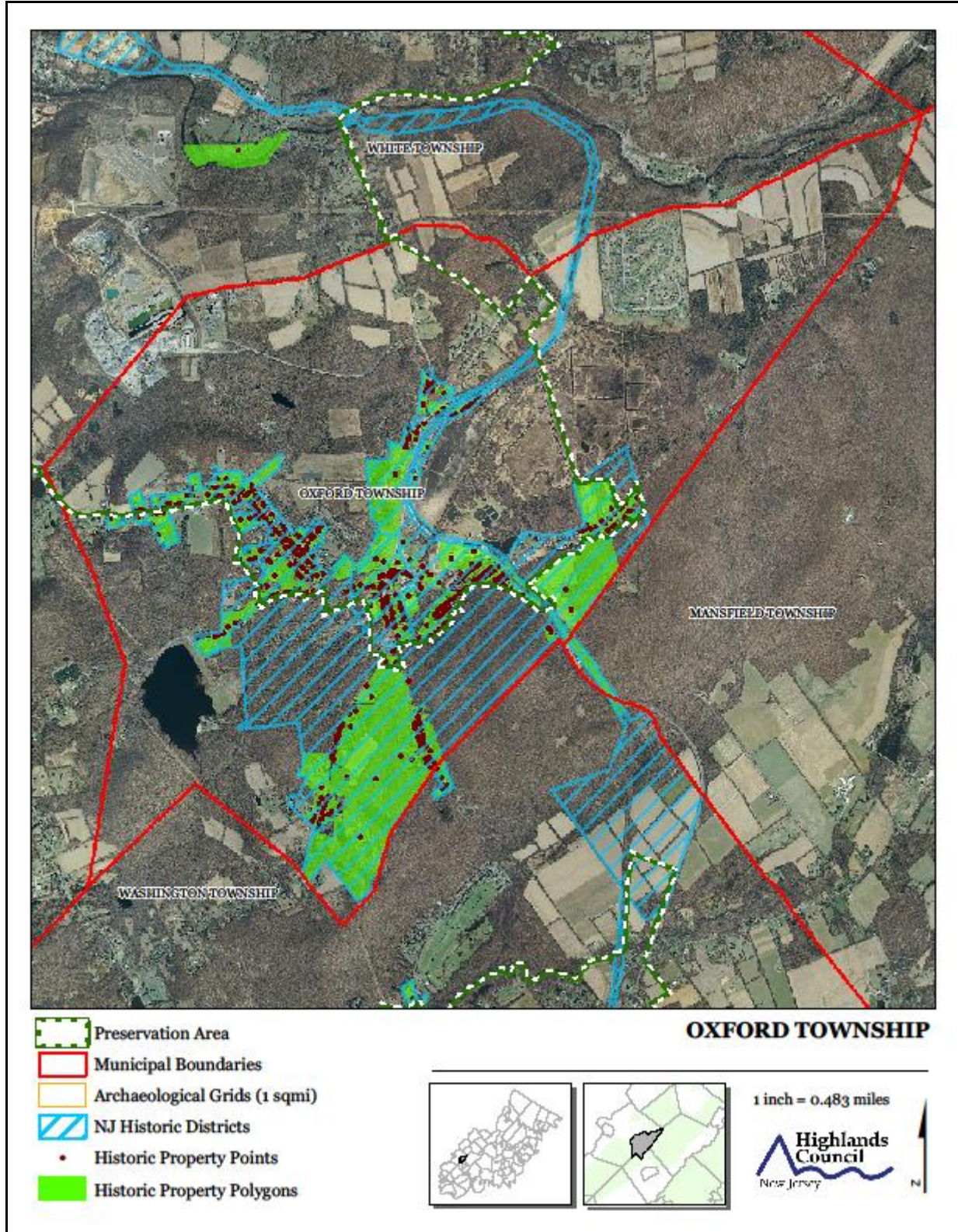


Exhibit HH. Baseline Scenic Resources Inventory

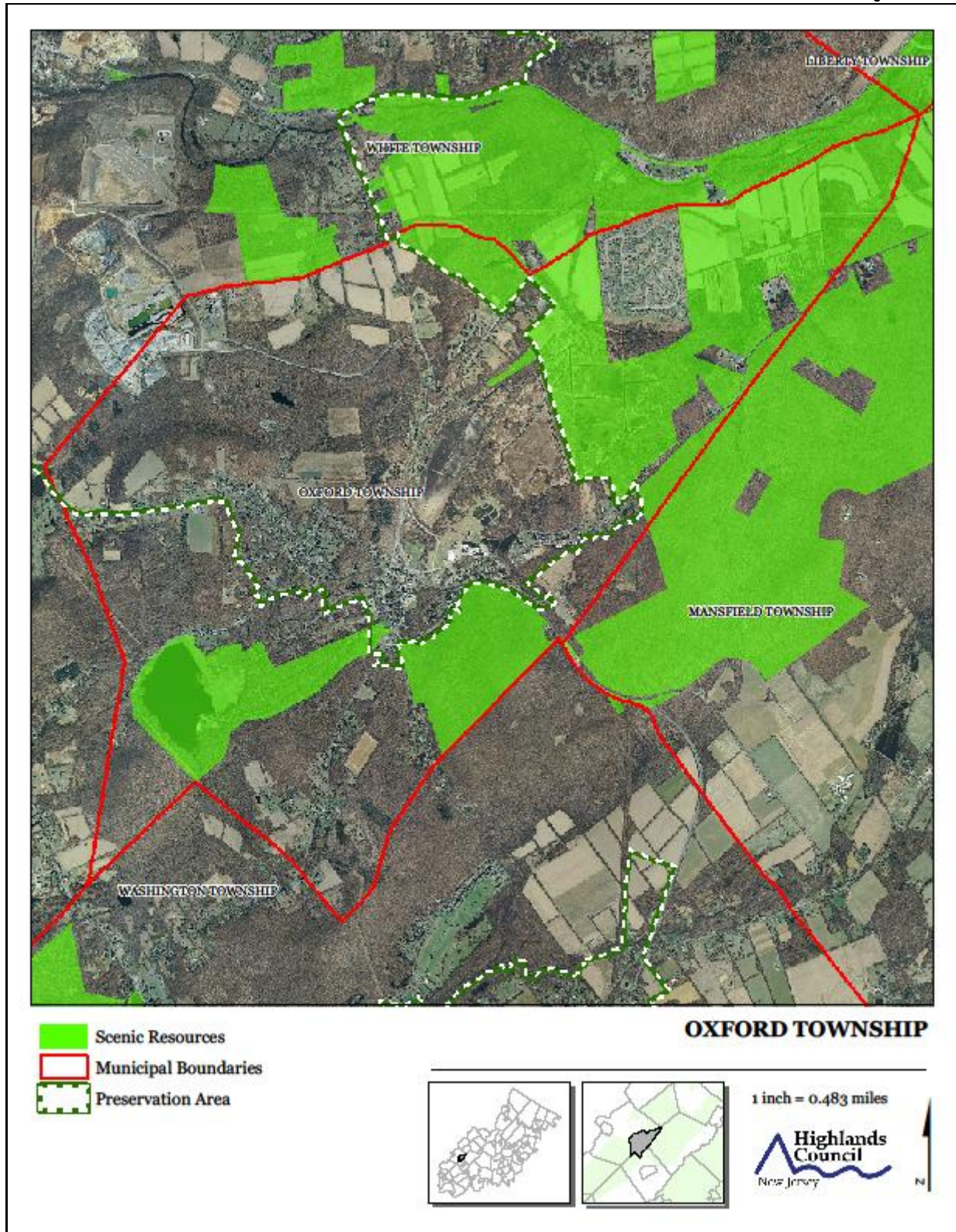


Exhibit II. SDRP Planning Areas and Designated Centers

