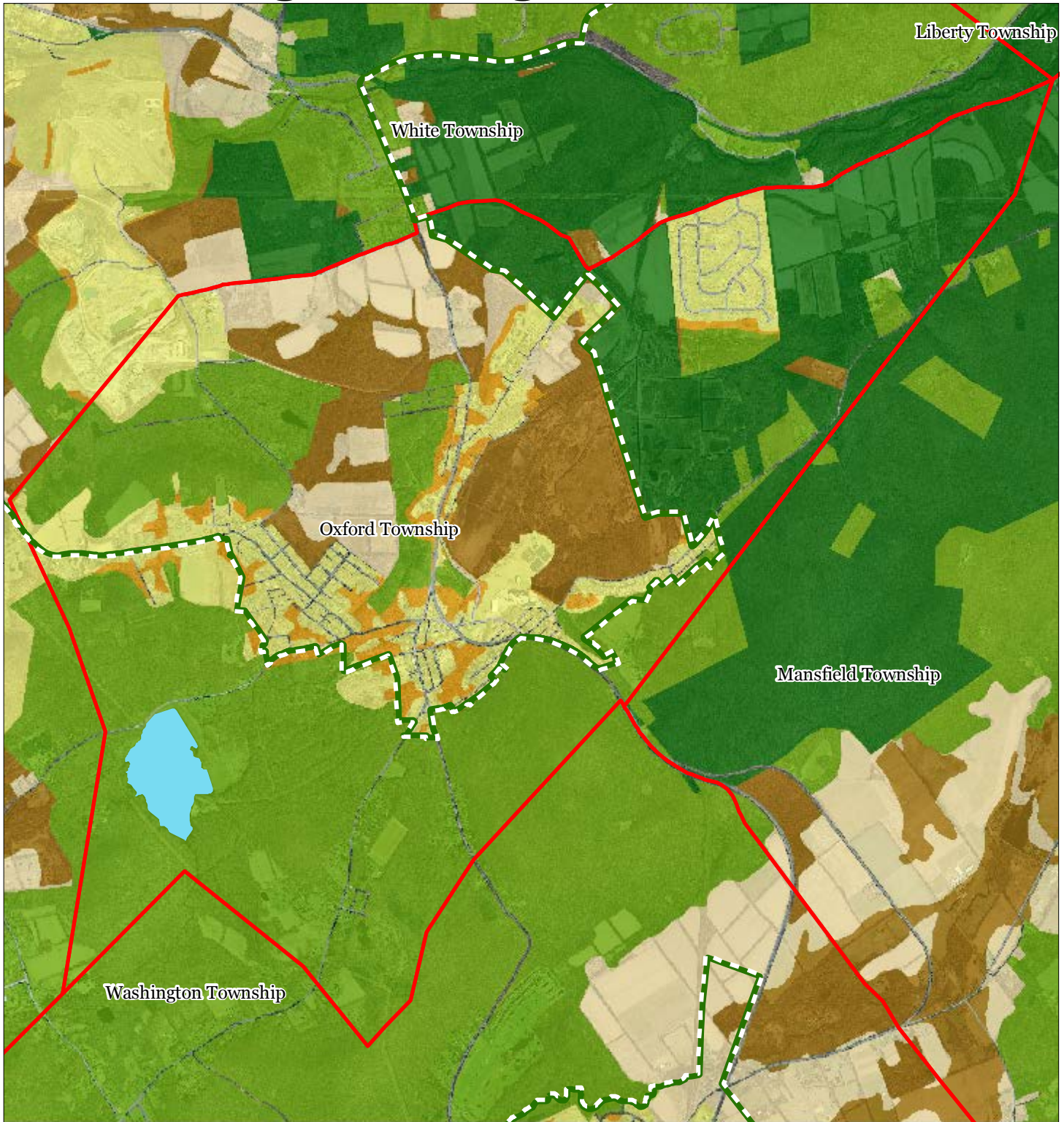


Exhibit A: Regional Master Plan Overlay Zone Designation



Regional Master Plan Overlay Zone Designation

- | | | |
|--|----------------------|-----------------------------|
| Zone | Protection | Lakes Greater Than 10 acres |
| Conservation | Preservation Area | |
| Existing Community | Municipal Boundaries | |
| Sub-Zone | | |
| Existing Community Environmentally Constrained | | |
| Conservation Environmentally Constrained | | |
| Lake Community | | |
| Wildlife Management | | |

Oxford Township

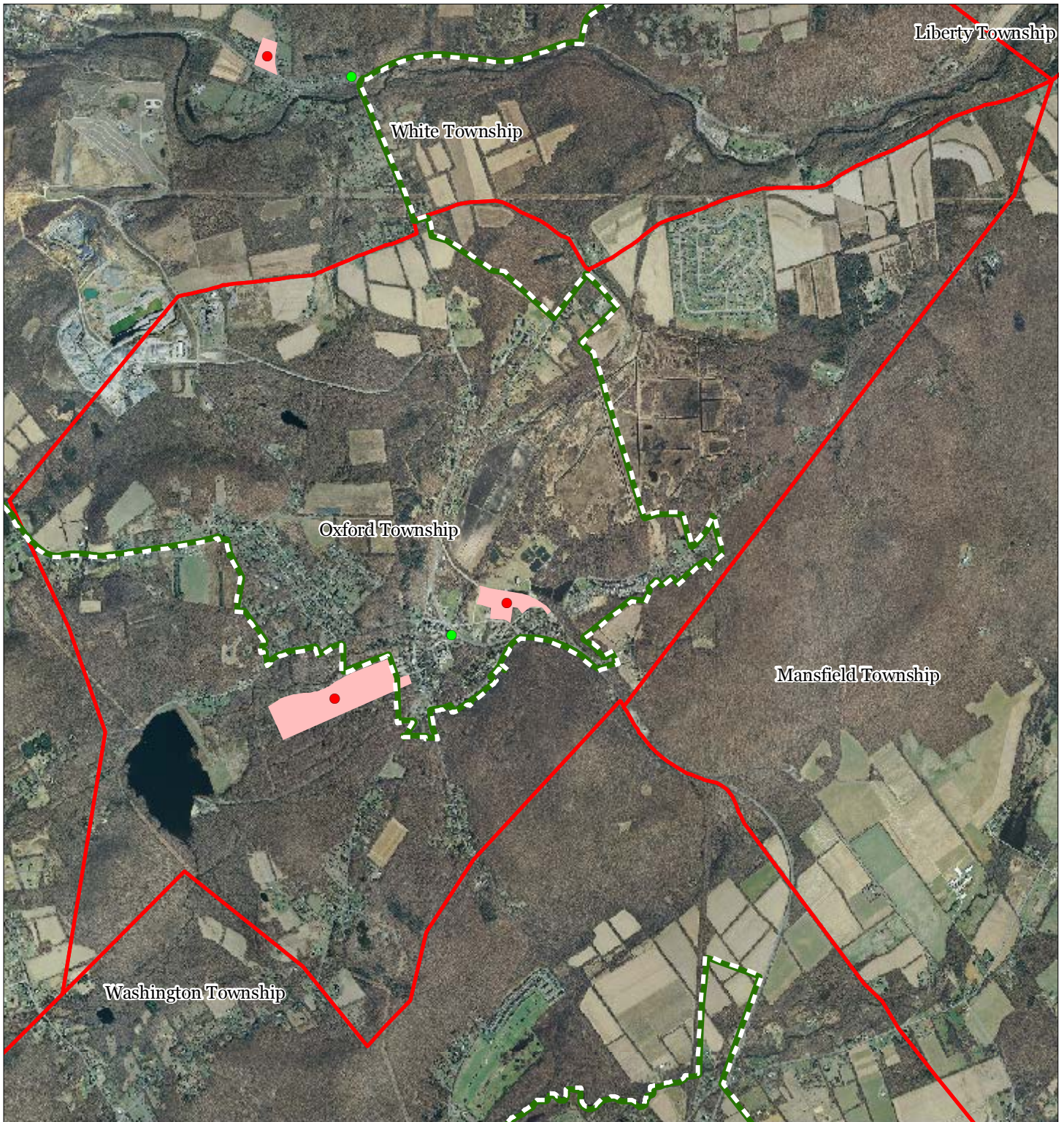


1 inch = 0.474 miles



October 2011

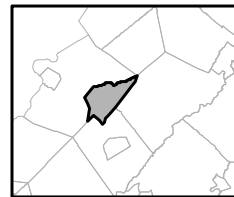
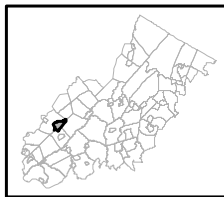
Exhibit C: Highlands Contaminated Site Inventory



Highlands Contaminated Site Inventory

Oxford Township

- Tier 1 Sites
- Tier 1 Sites (Polygons)
- Tier 2 Sites
- ▭ Preservation Area
- ▭ Municipal Boundaries

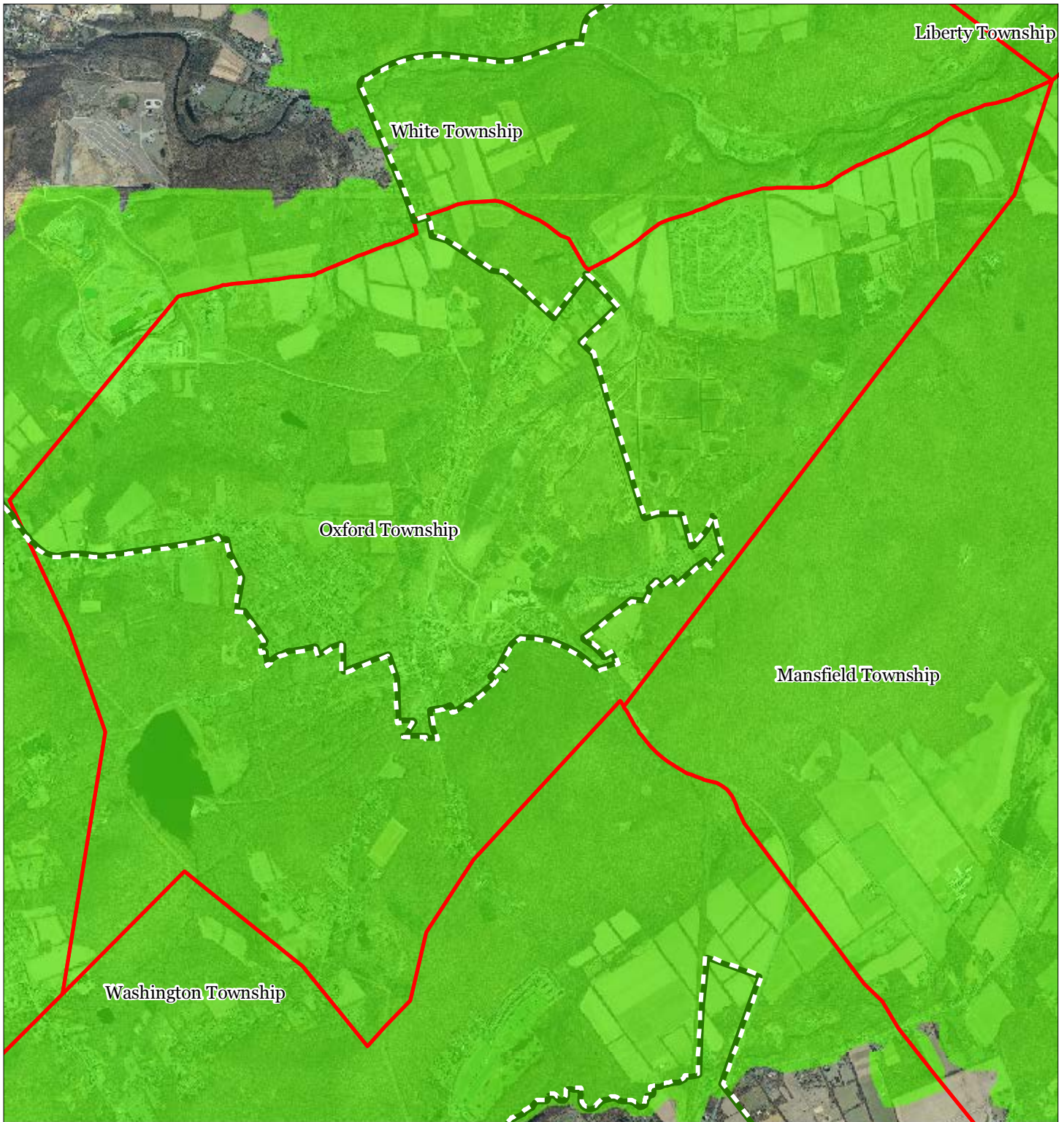





1 inch = 0.474 miles



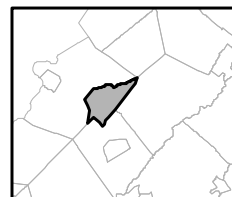
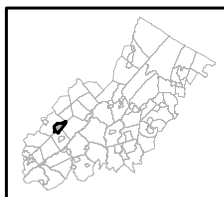
October 2011

Exhibit 8: Forest Resource Area



-  Forest Resource Area
-  Preservation Area
-  Municipal Boundaries

Oxford Township






1 inch = 0.474 miles

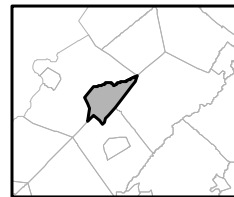
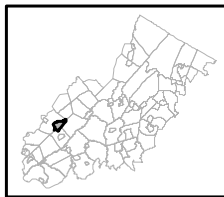


Exhibit 9: Total Forest Area



-  Forested Areas
-  Preservation Area
-  Municipal Boundaries

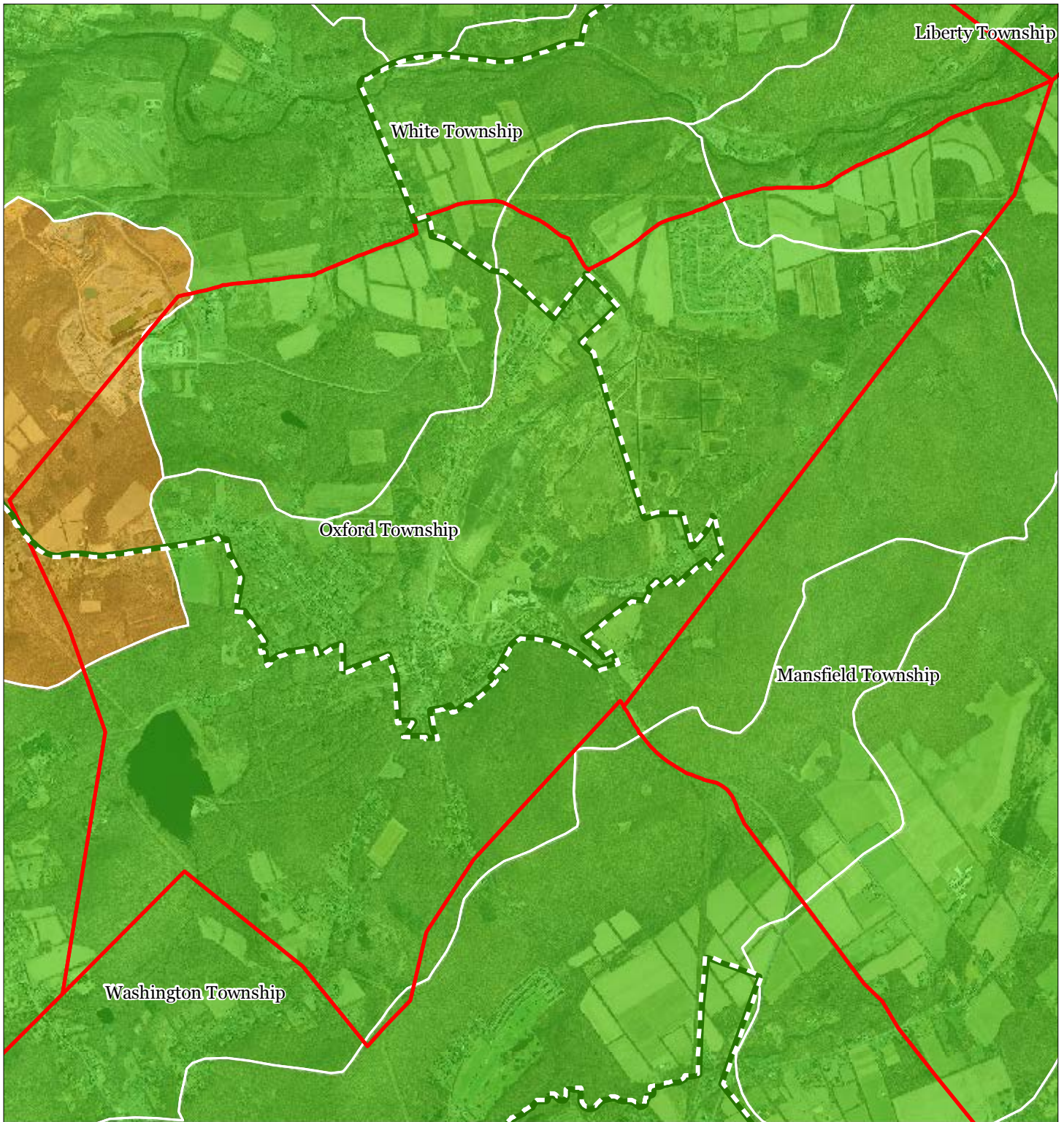
Oxford Township








1 inch = 0.474 miles



Exhibit : : Forest Subwatersheds



Forest Integrity by HUC14 Subwatershed

-  *Low*
-  *Moderate*
-  *High*
-  Preservation Area
-  Municipal Boundaries

Oxford Township

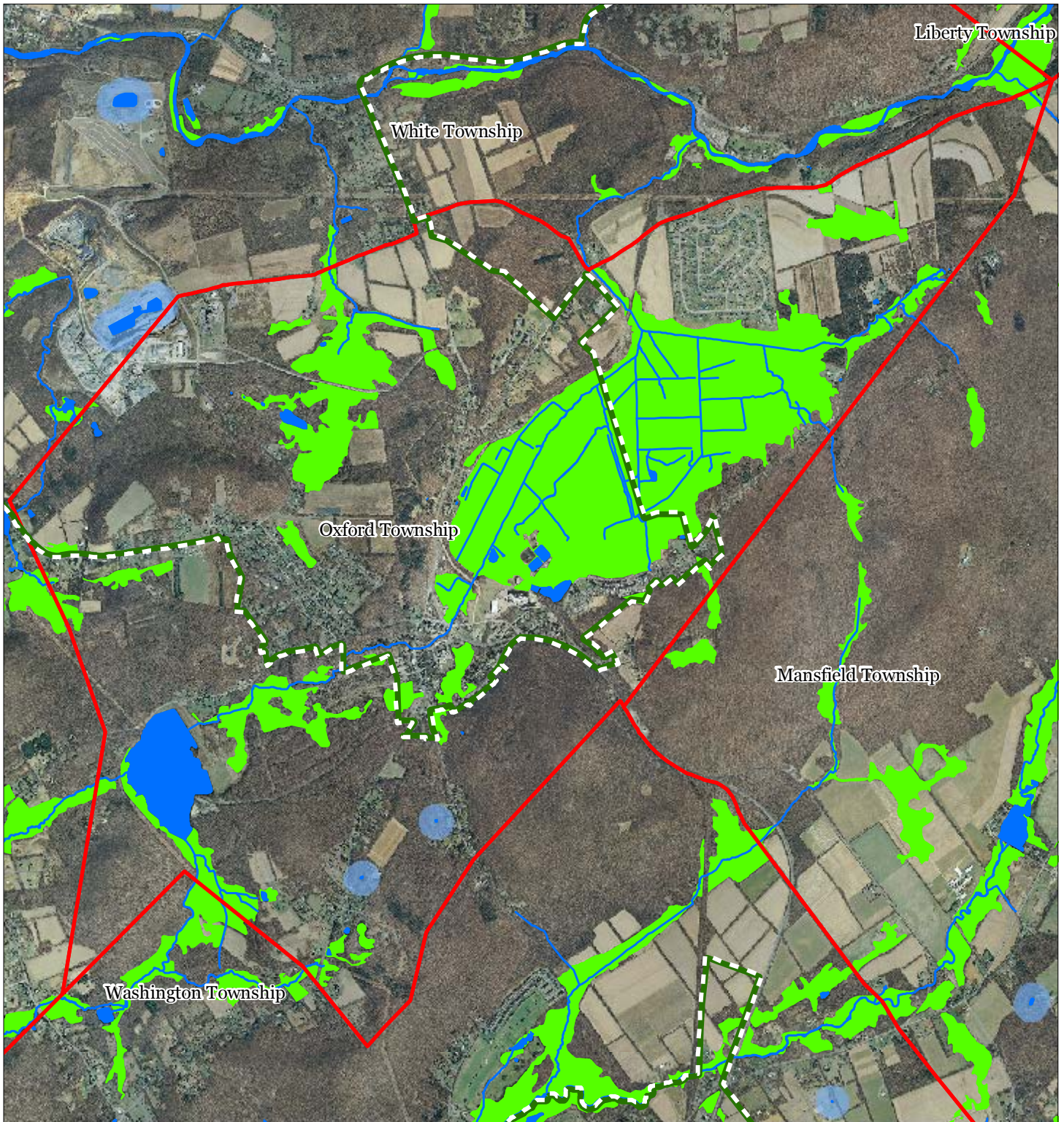


1 inch = 0.474 miles



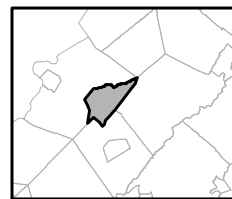
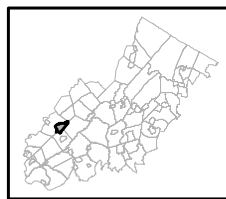
October 2011

Exhibit ; : Highlands Open Waters



-  Highlands Open Water Buffers (300ft)
-  Streams
-  Wetlands
-  Lakes & Ponds
-  Preservation Area
-  Municipal Boundaries

Oxford Township

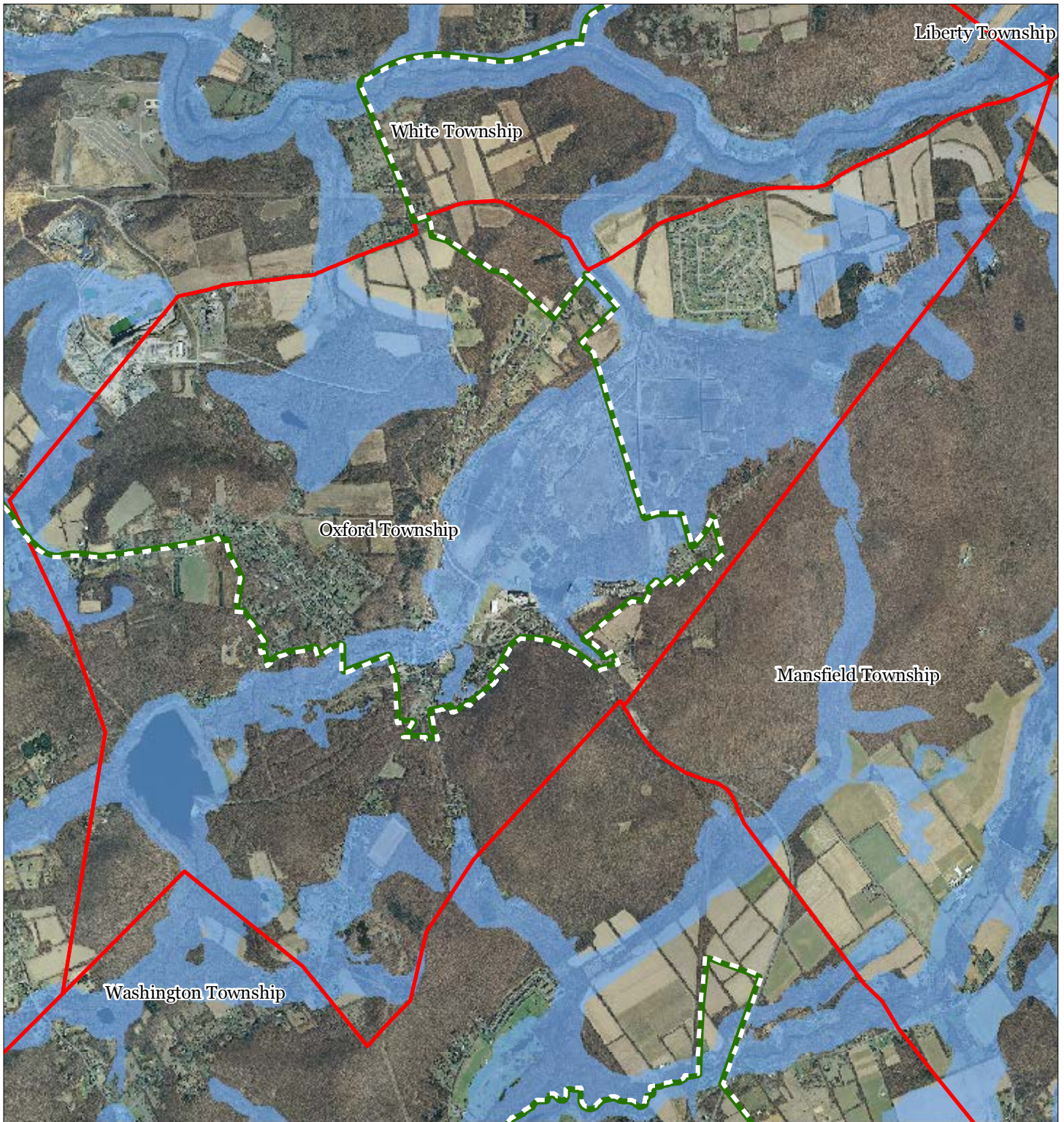


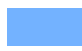


1 inch = 0.474 miles



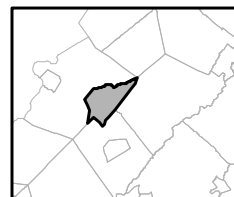
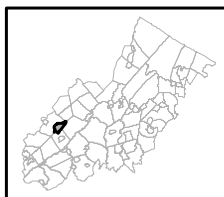
October 2011

Exhibit < : Highlands Riparian Areas



-  Riparian Area
-  Preservation Area
-  Municipal Boundaries

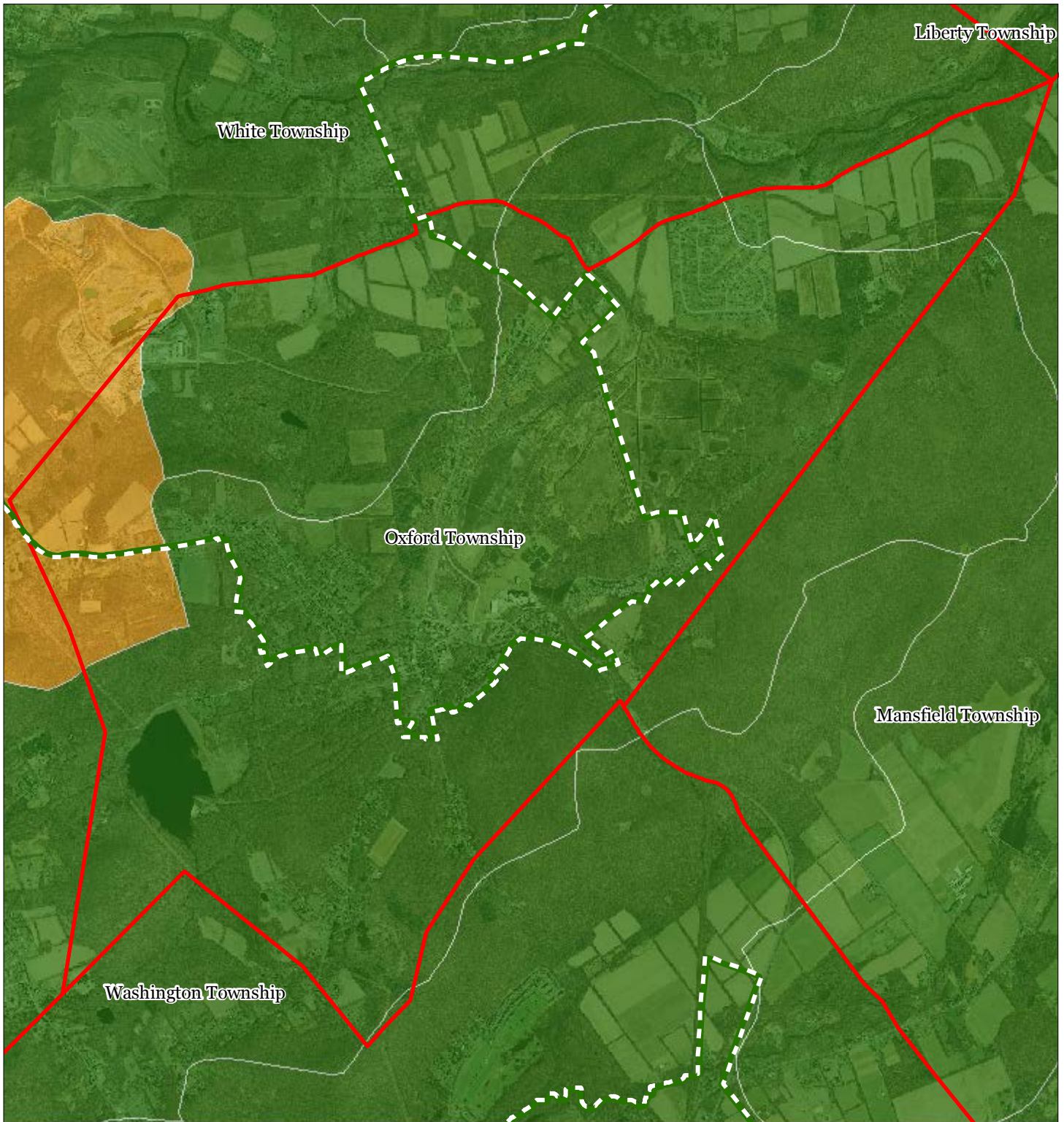
Oxford Township



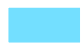




1 inch = 0.474 miles



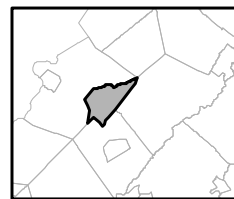
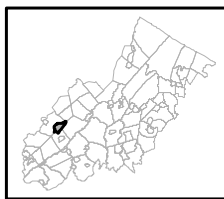
Exhibit = Watershed Values



Watershed Values by HUC14 Subwatershed

-  Low
-  Moderate
-  High
-  Preservation Area
-  Municipal Boundaries

Oxford Township

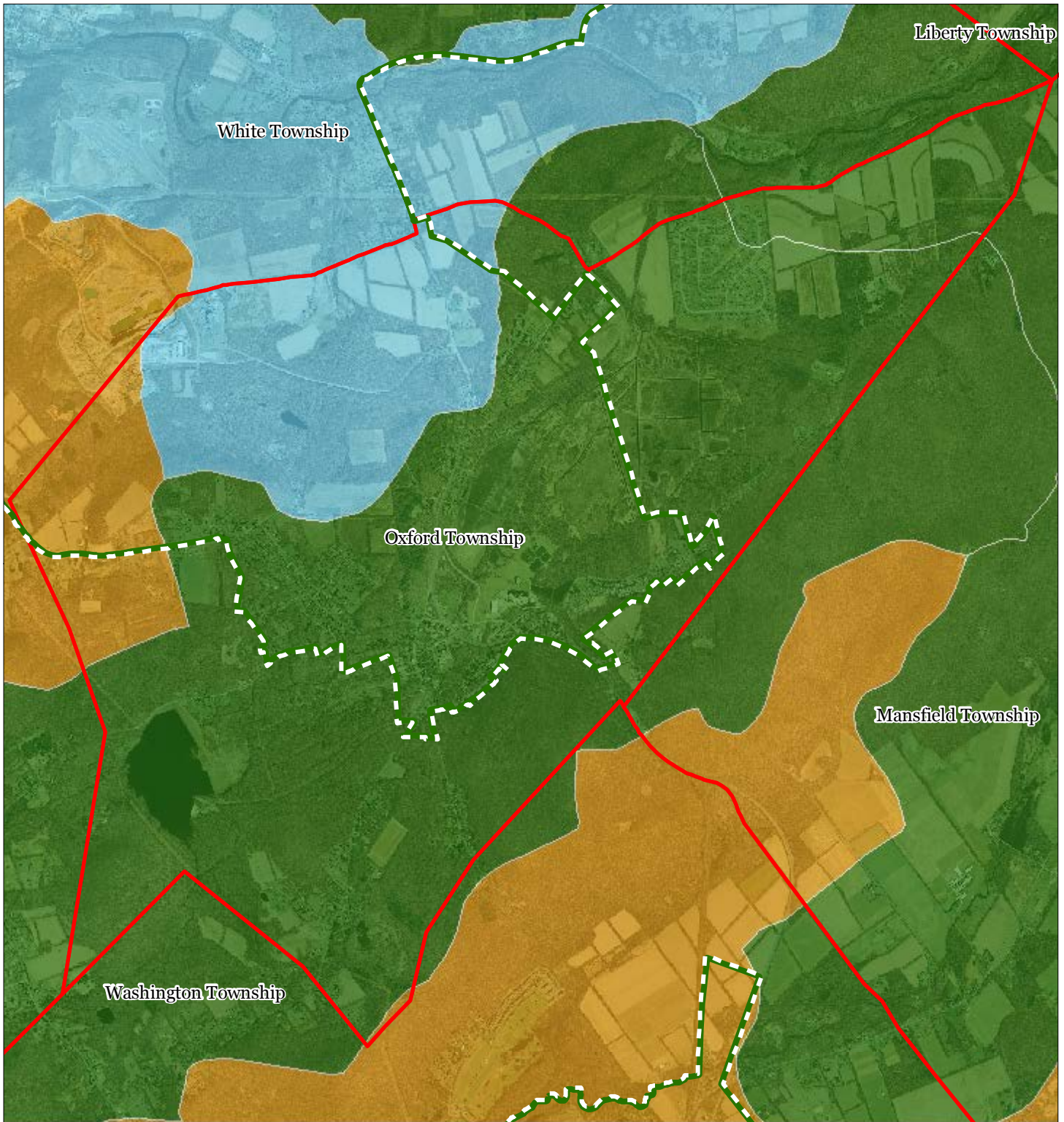


1 inch = 0.474 miles







October 2011

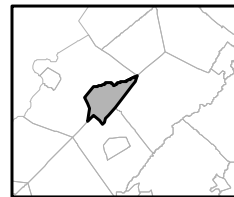
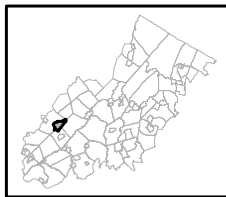
Exhibit >: Riparian Integrity



Riparian Integrity by HUC14 Subwatershed

-  Low
-  Moderate
-  High
-  Preservation Area
-  Municipal Boundaries

Oxford Township

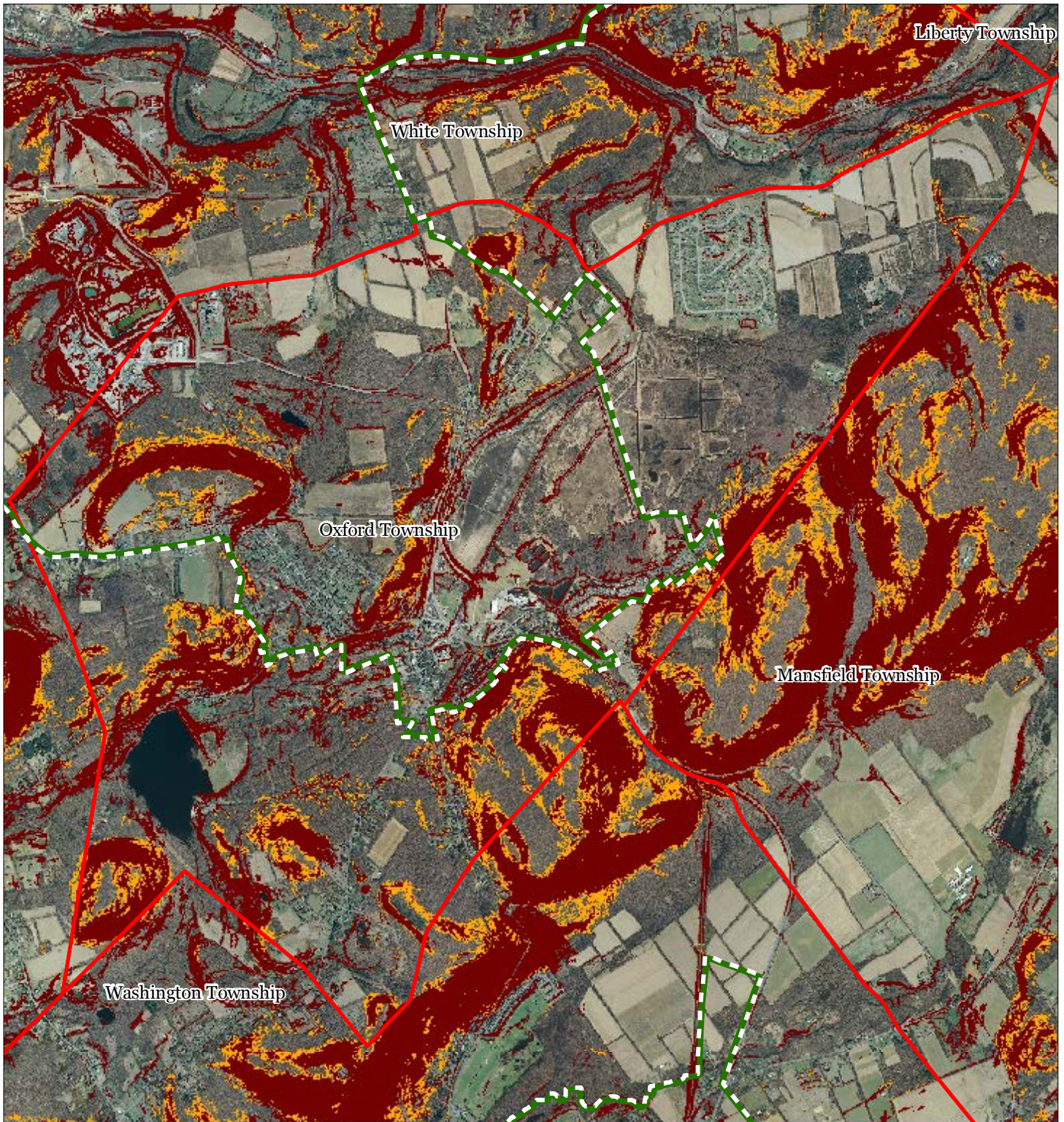


1 inch = 0.474 miles







October 2011

Exhibit ? : Steep Slope Protection Areas



Steep Slopes

-  Moderate
-  Severe
-  Preservation Area
-  Municipal Boundaries

Oxford Township






1 inch = 0.474 miles



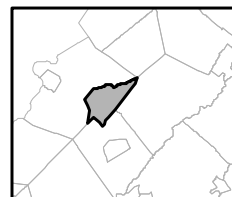
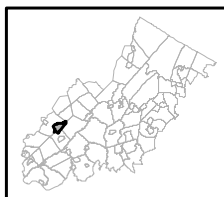
October 2011

Exhibit @: Critical Wildlife Habitat



-  Critical Wildlife Habitat
-  Preservation Area
-  Municipal Boundaries

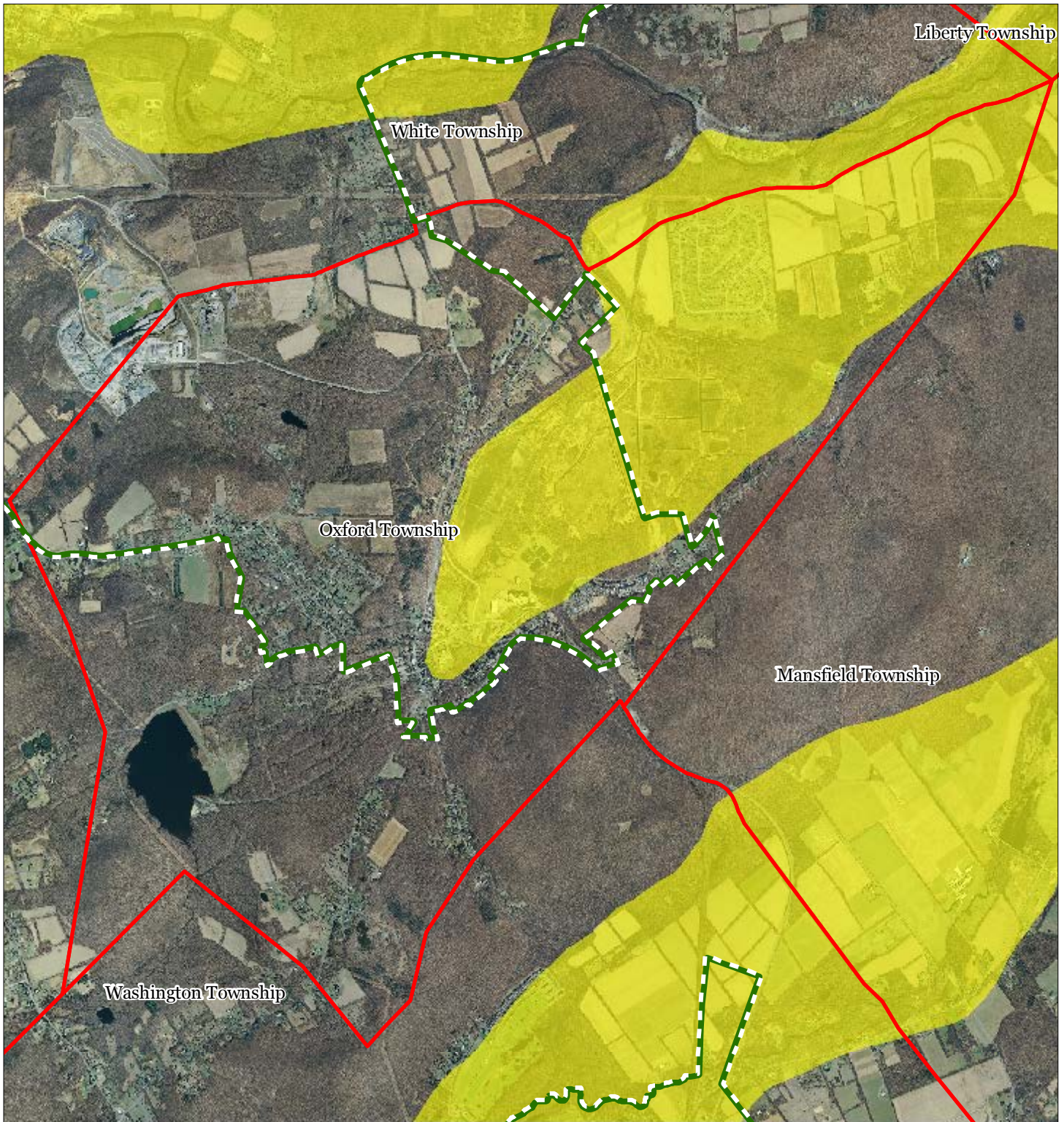
Oxford Township






1 inch = 0.474 miles

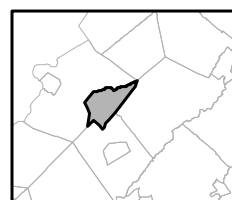
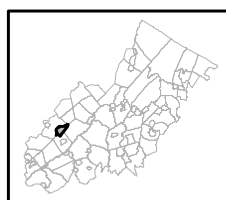


Exhibit C: Carbonate Rock Area



-  Carbonate Rock Area
-  Preservation Area
-  Municipal Boundaries

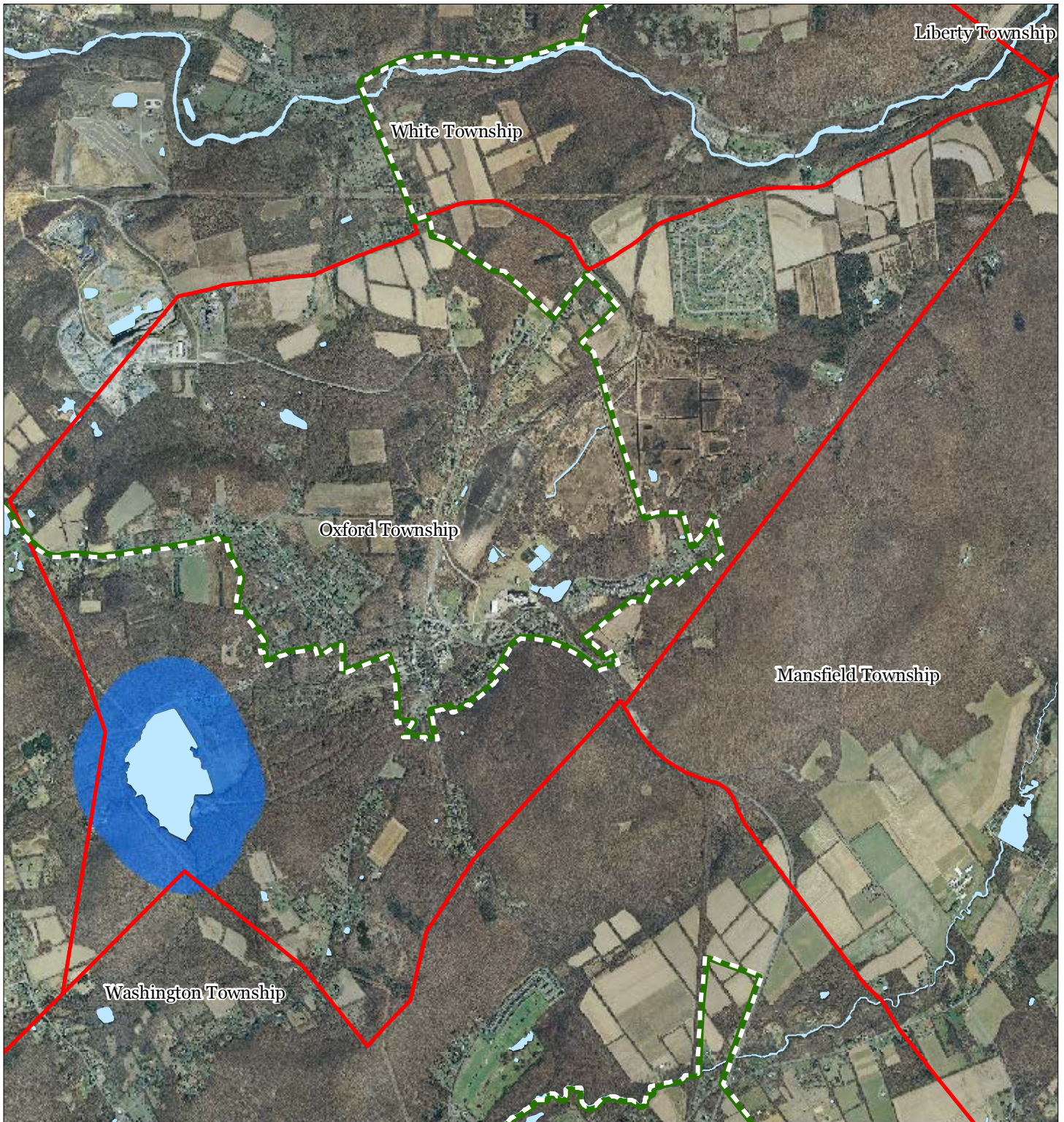
Oxford Township

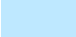





1 inch = 0.474 miles

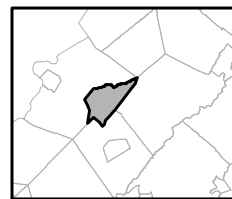
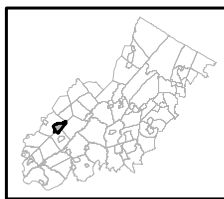


Exhibit D: Lake Management Area



-  Lakes & Ponds
-  Lake Management Area
-  Preservation Area
-  Municipal Boundaries

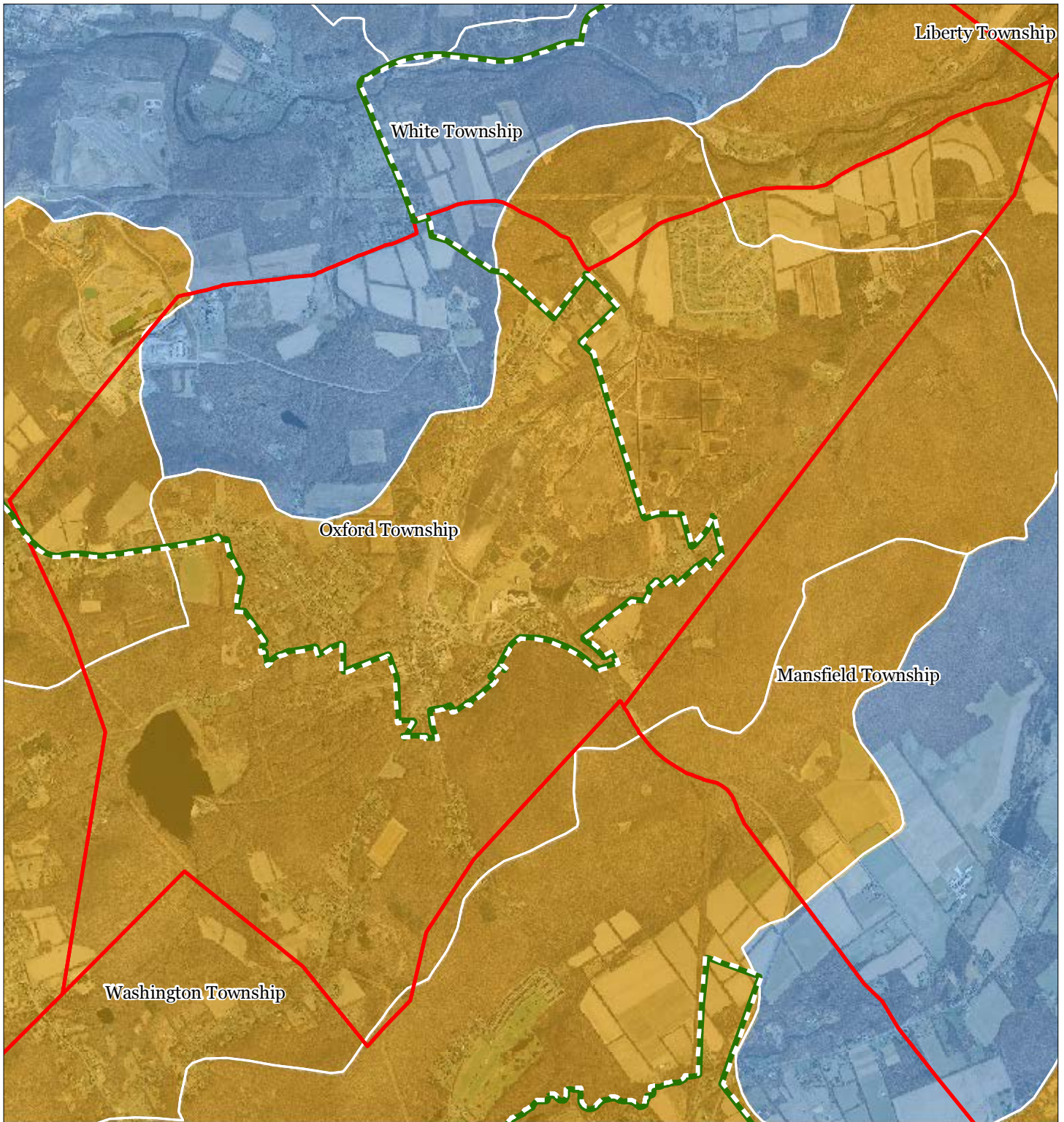
Oxford Township



1 inch = 0.474 miles

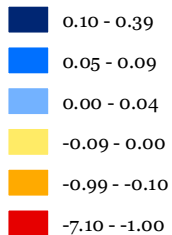




Exhibit E: Net Water Availability



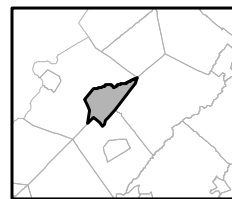
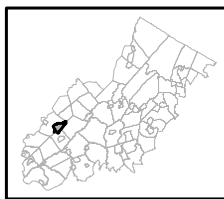
Net Water Availability By HUC14

Million Gallons Per Day (MGD)



 Preservation Area
 Municipal Boundaries

Oxford Township

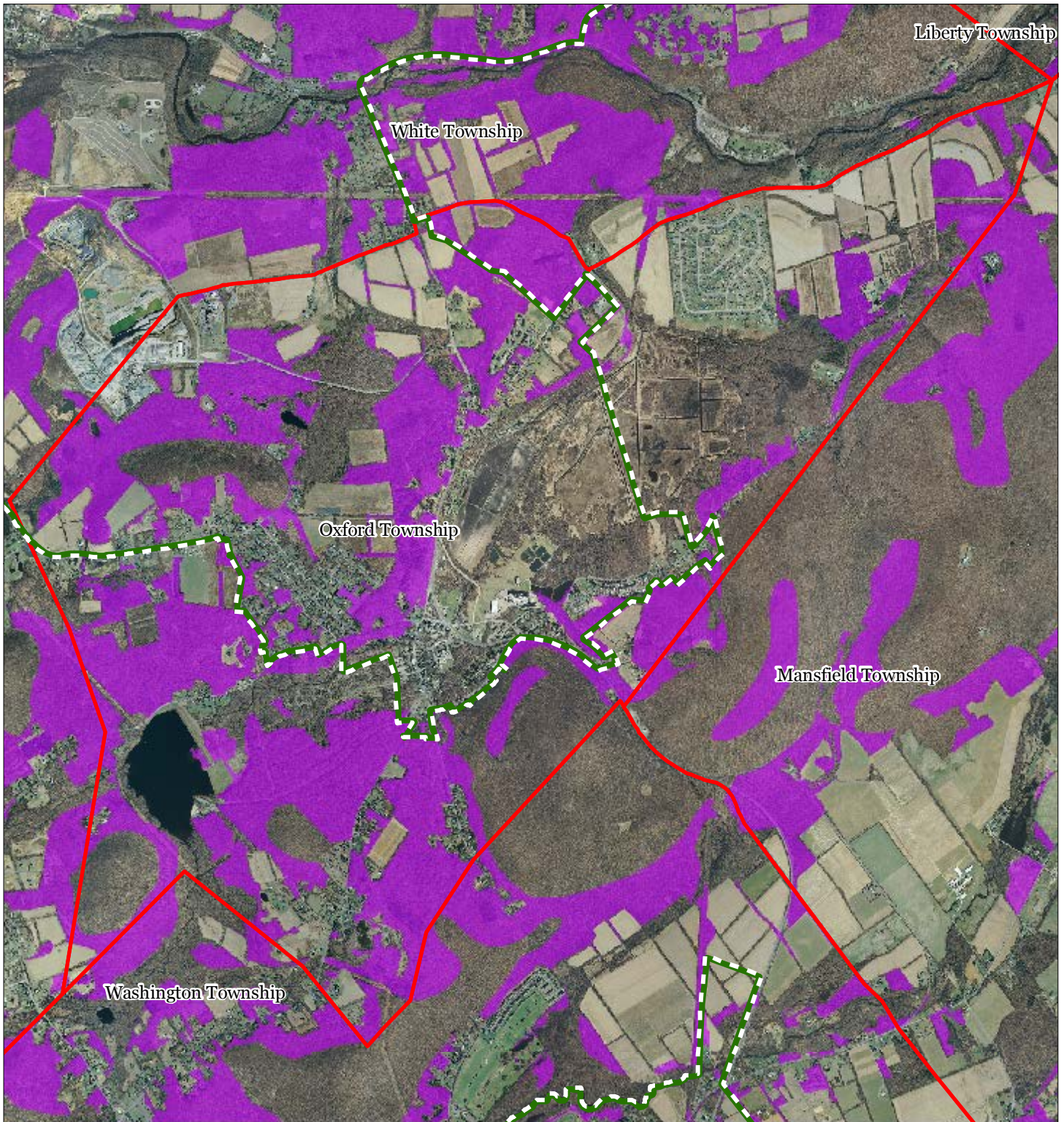





1 inch = 0.474 miles



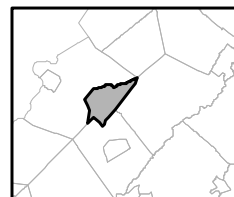
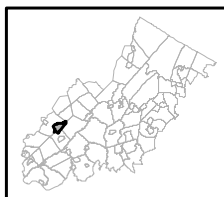
October 2011

Exhibit F: Prime Ground Water Recharge Areas



-  Prime Groundwater Recharge Areas
-  Preservation Area
-  Municipal Boundaries

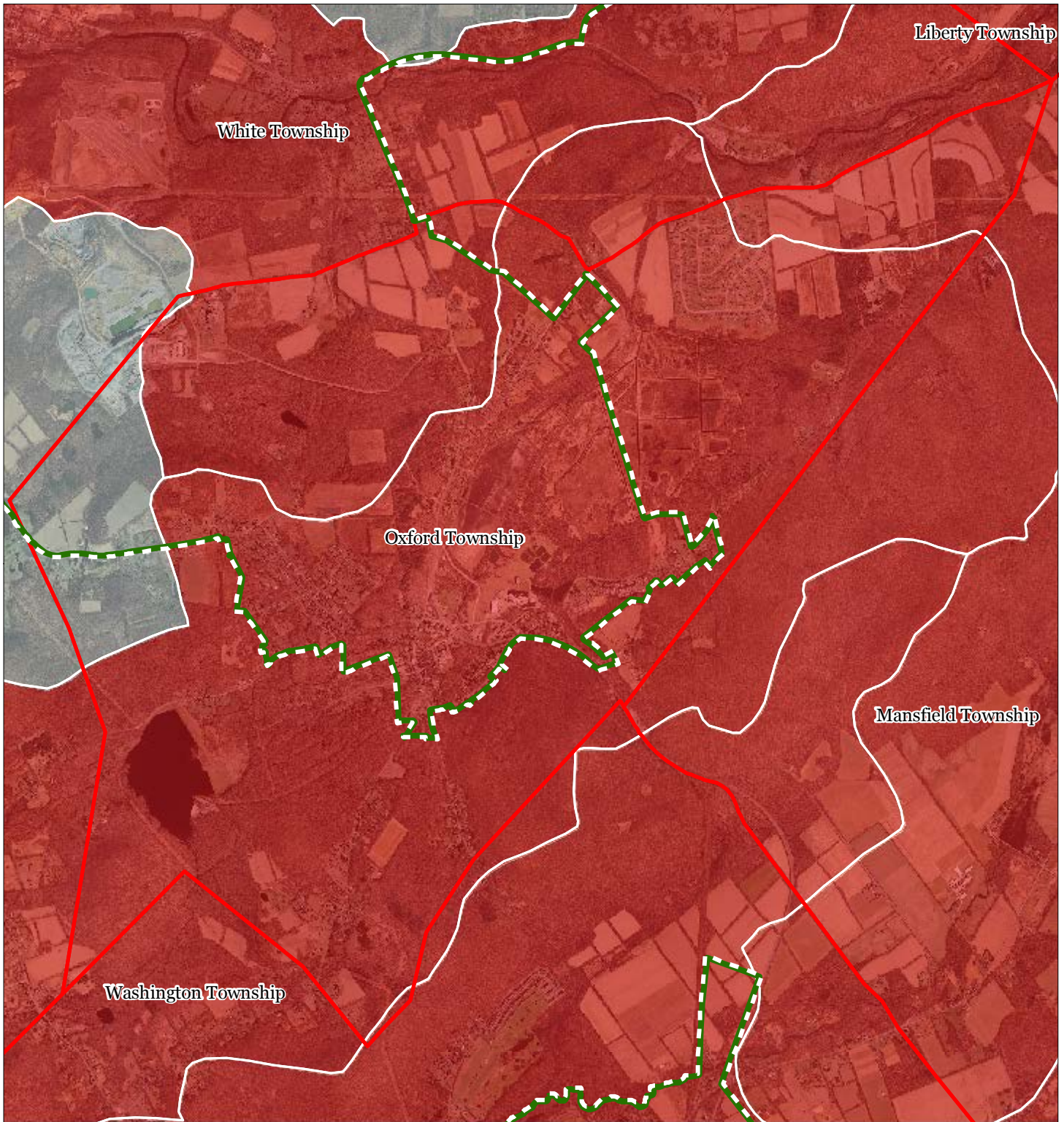
Oxford Township









1 inch = 0.474 miles



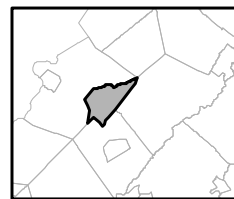
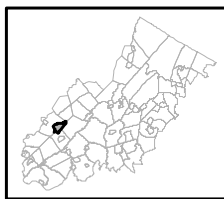
Exhibit G HUC 14s on NJDEP Impaired Waters List



Impaired Waters Overall Assessment by HUC14 Subwatershed

-  Non Impacted
-  Insufficient Data Available
-  Moderate
-  Water Quality Impaired
-  Preservation Area
-  Municipal Boundaries

Oxford Township

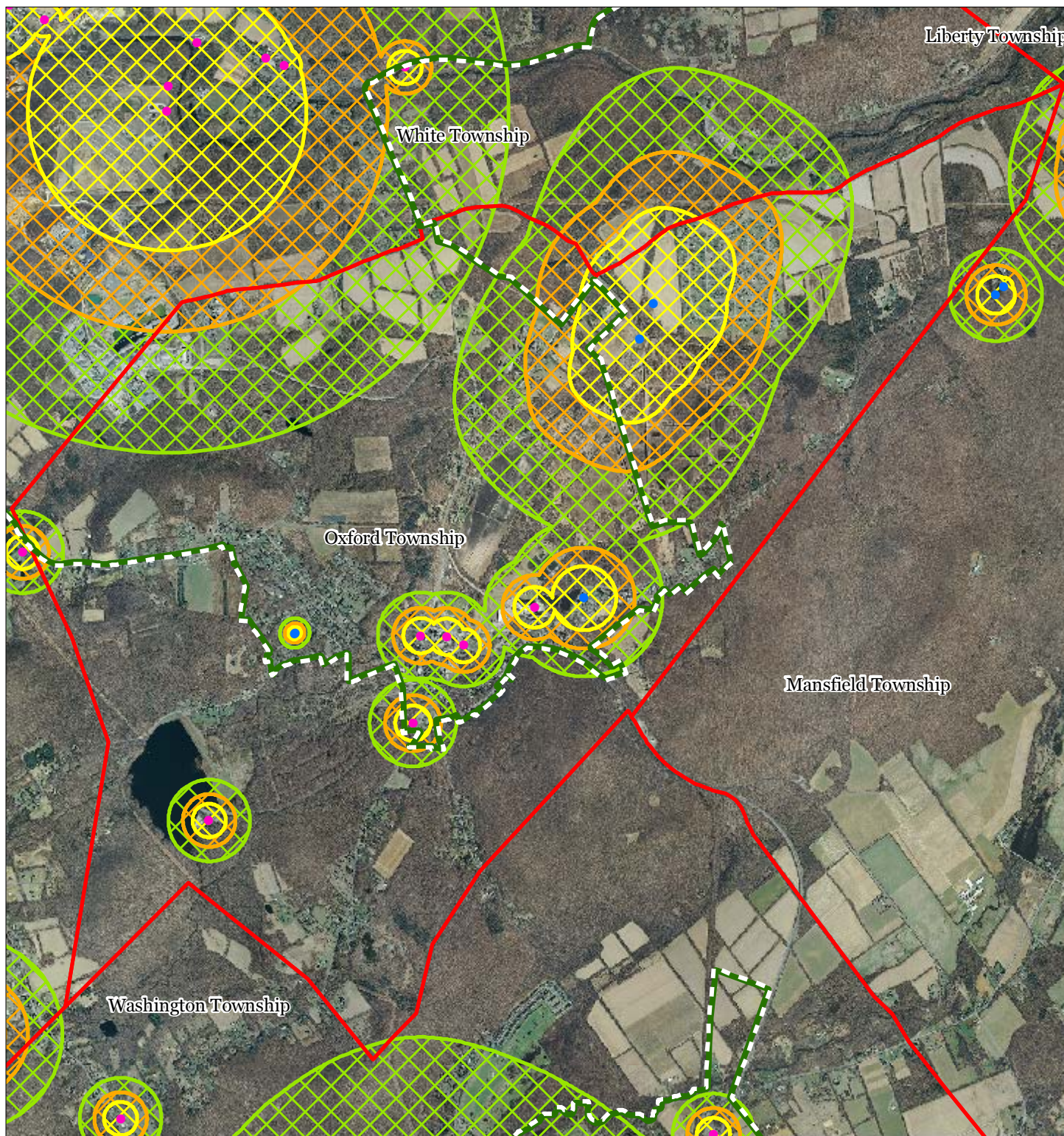


1 inch = 0.474 miles



October 2011

Exhibit T: Wellhead Protection Areas



- Public Community Wells
- Public Non-Community Wells

Wellhead Protection Areas

- 2-Year Tier
- 5-Year Tier
- 12-Year Tier

- Preservation Area
- Municipal Boundaries

Oxford Township

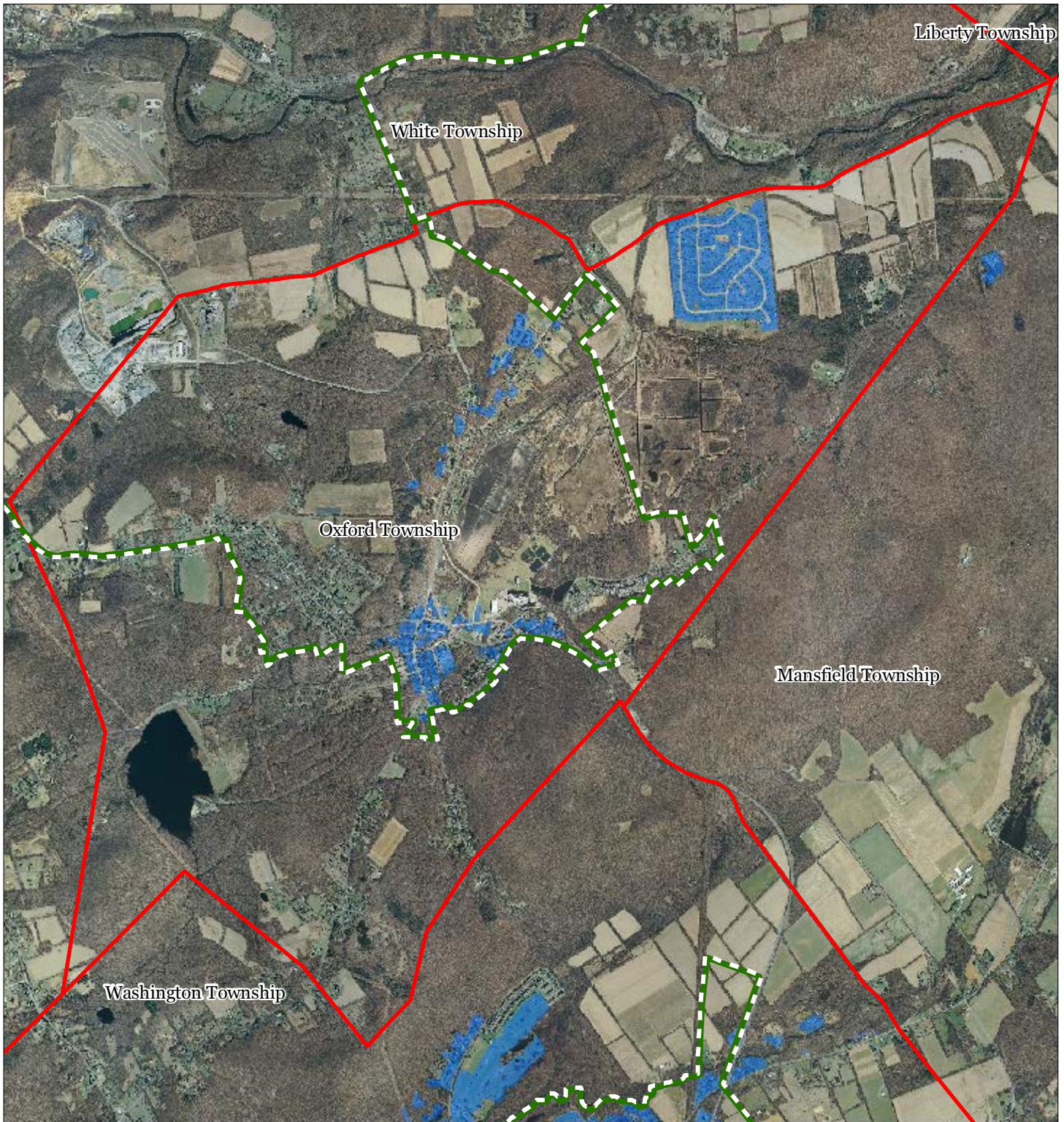





1 inch = 0.474 miles



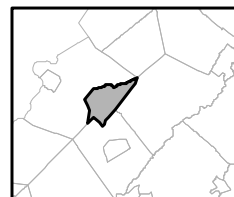
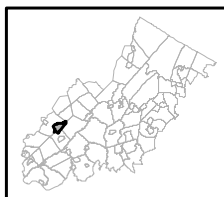
October 2011

Exhibit I : Public Community Water Systems



-  Public Community Water Systems
-  Preservation Area
-  Municipal Boundaries

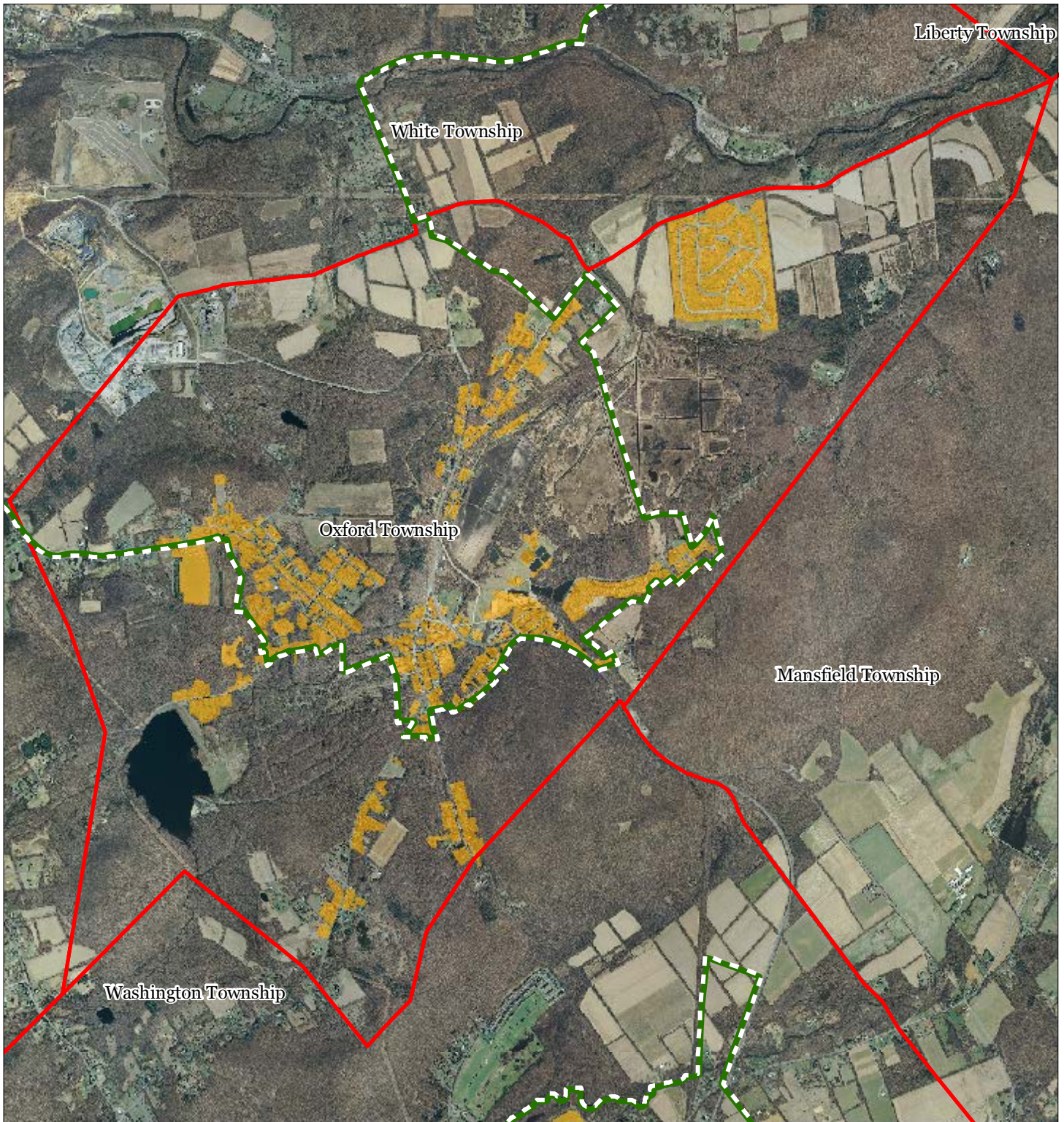
Oxford Township






1 inch = 0.474 miles



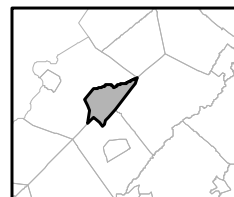
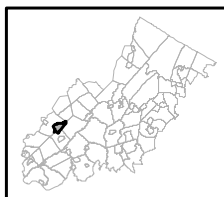
Exhibit J: Highlands Domestic Sewerage Facilities



Highlands Domestic Sewerage Facilities

-  Existing Area Served
-  Preservation Area
-  Municipal Boundaries

Oxford Township



1 inch = 0.474 miles



Exhibit L: Highlands Roadway Network




Roadway Network


 Interstate Highways


 U.S. Routes

 State Routes

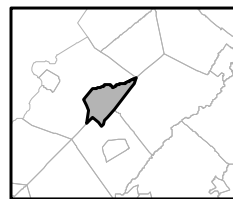
 County Routes

 Local Routes

 Preservation Area

 Municipal Boundaries

Oxford Township

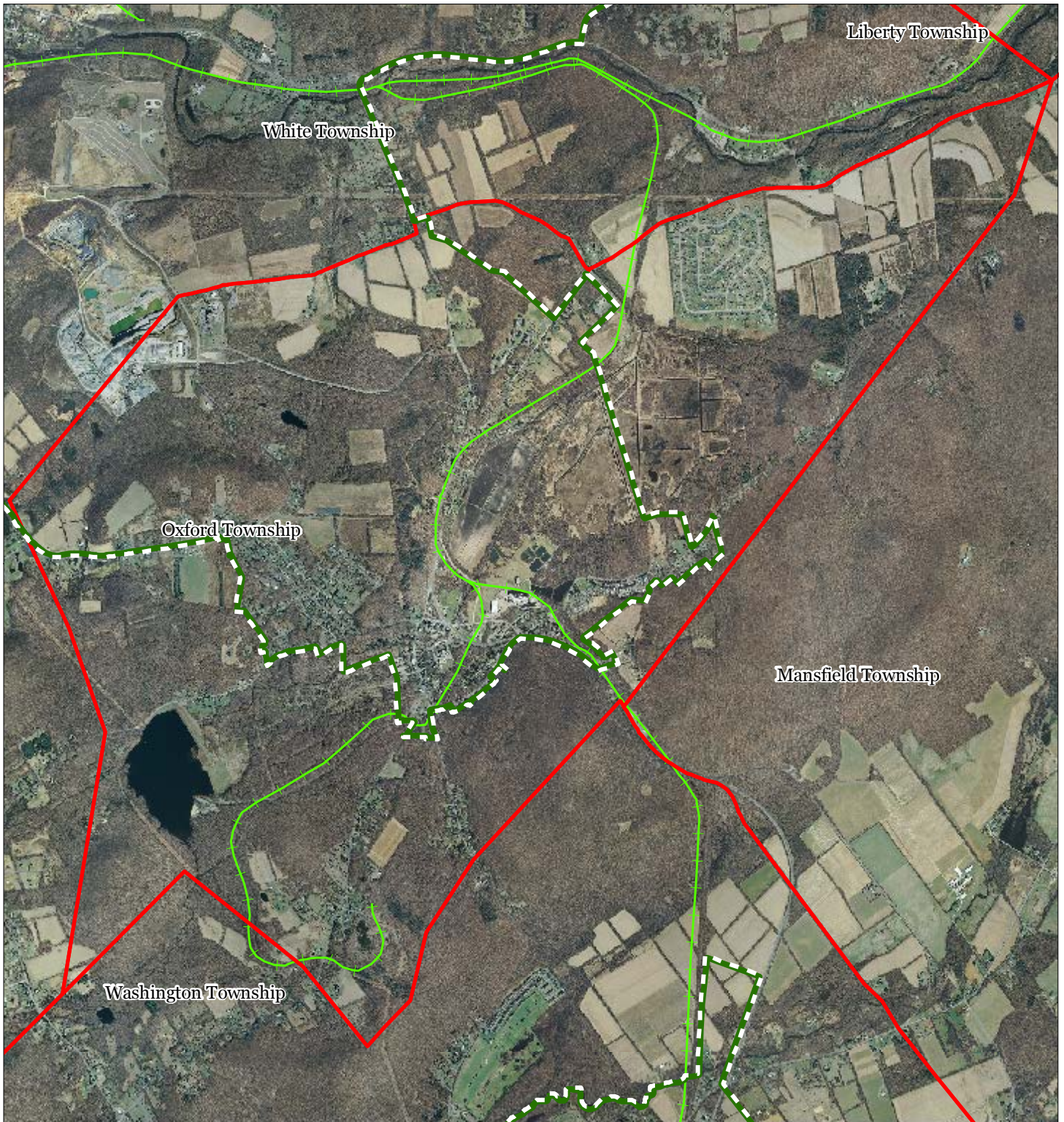


1 inch = 0.474 miles



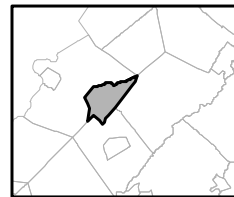
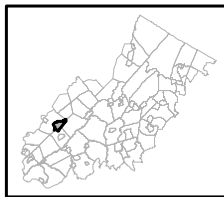
October 2011

Exhibit M Highlands Transit Network



- | | |
|--------------------------------|----------------------|
| Rail Network | Rail Stations |
| Boonton Line | Park and Ride Sites |
| Main Line & Bergen County Line | Private Bus Lines |
| Morris and Essex Line | NJ Transit Bus Lines |
| Raritan Valley Line | Airports |
| Freight Rail Lines | |
| Freight Rail Lines | |
| Abandoned Freight Rail | |

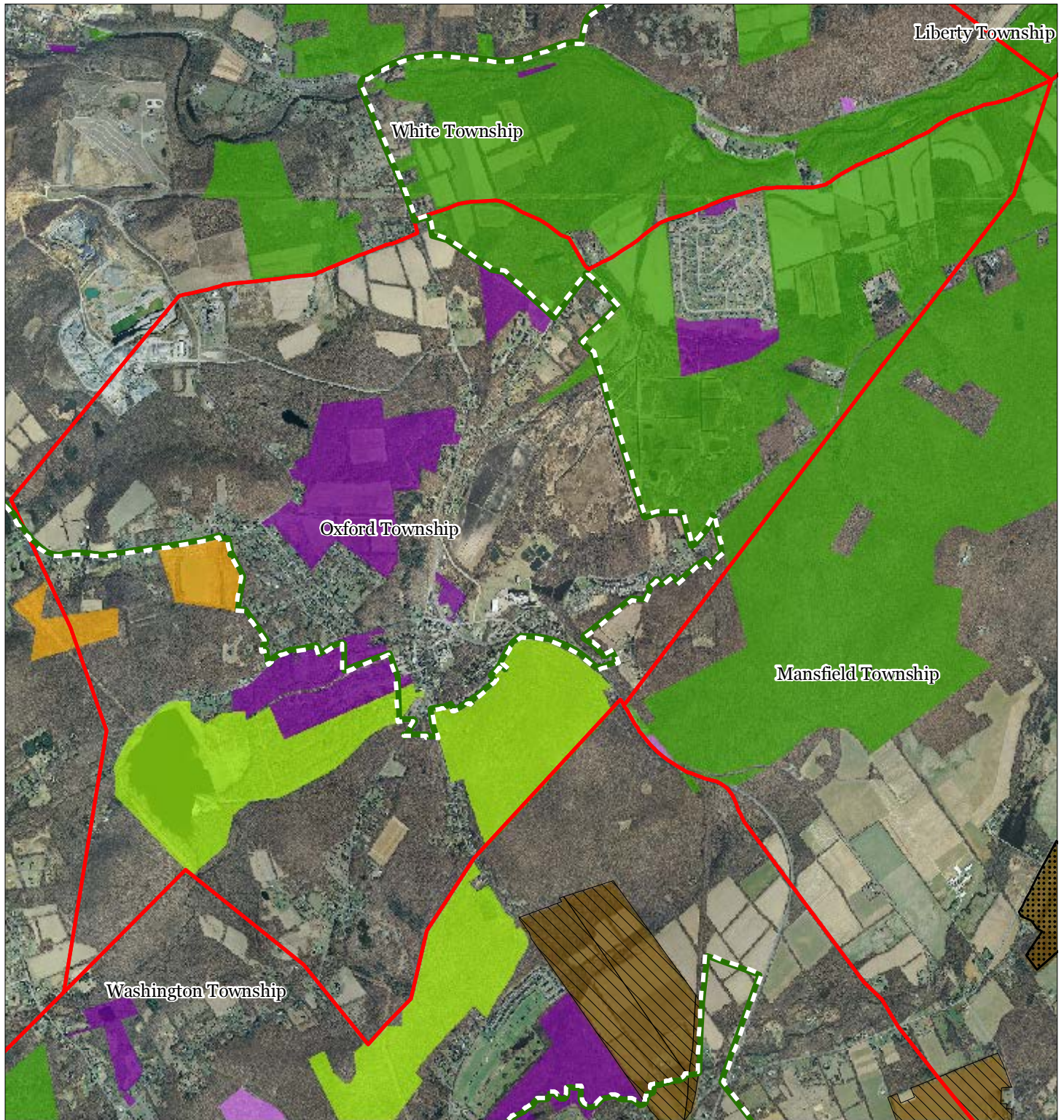
Oxford Township



1 inch = 0.474 miles



Exhibit N Preserved Lands



- | | |
|---|-------------------------------|
| Preserved Lands | Conservation Easements |
| Federal Open Space | Green Acres |
| State Open Space | SADC Easements |
| County Open Space | SADC Final |
| Municipal Open Space | SADC Preserved |
| Non-Profit/Private Open Space | Municipal Boundaries |
| Water Supply Watershed Lands | Preservation Area |
| Preserved Farmland | |
| Highlands Transfer of Development Lands | |

Oxford Township



1 inch = 0.474 miles







October 2011

Exhibit 55: Highlands Conservation Priority Areas



Conservation Priority Area

-  Moderate
-  High
-  Preservation Area
-  Municipal Boundaries

Oxford Township

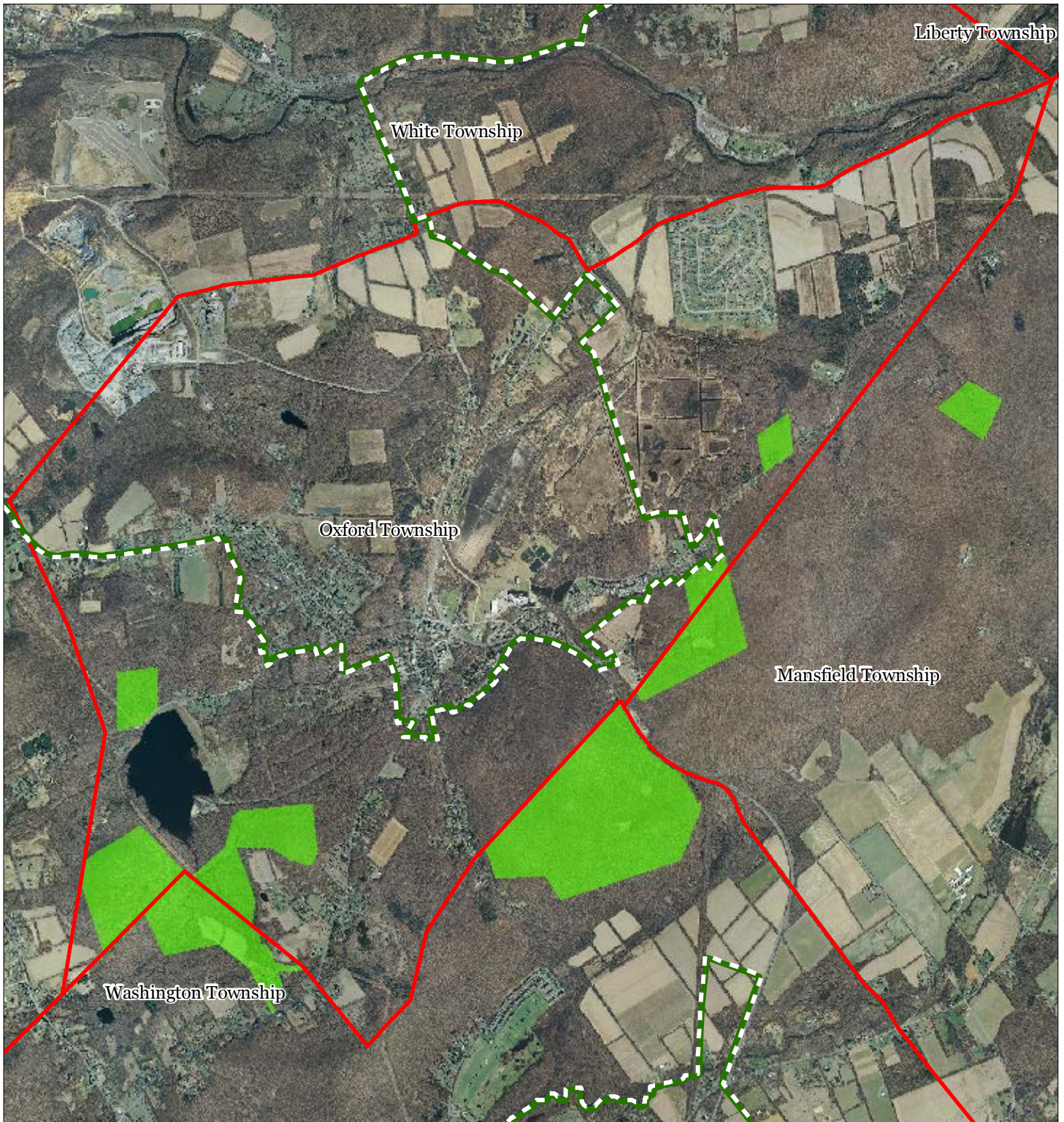





1 inch = 0.474 miles



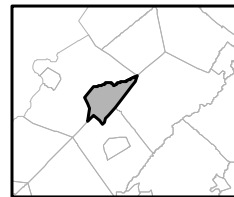
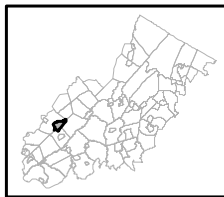
October 2011

Exhibit 66: Highlands Special Environmental Zone



-  Special Environmental Zones
-  Preservation Area
-  Municipal Boundaries

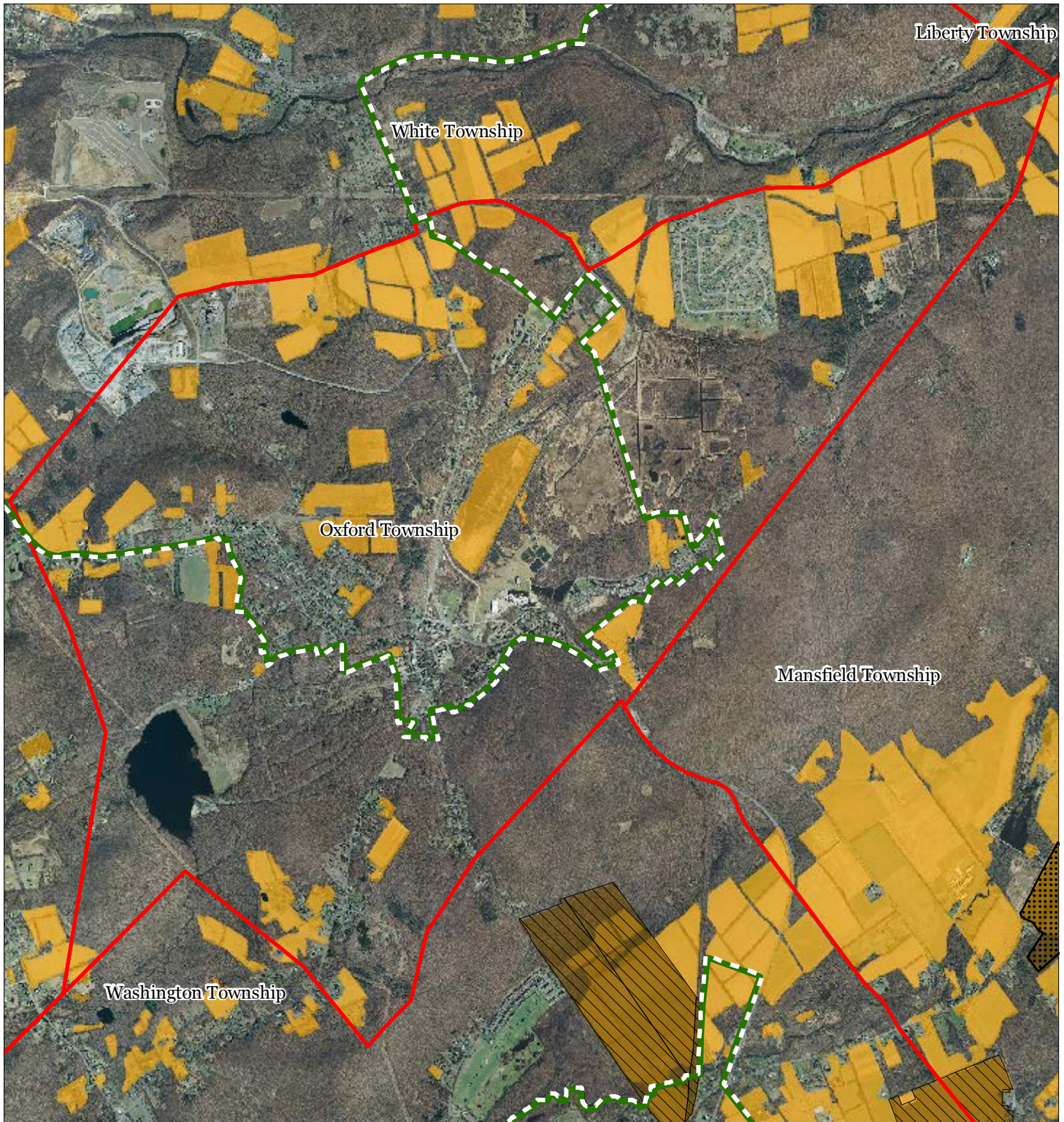
Oxford Township



1 inch = 0.474 miles



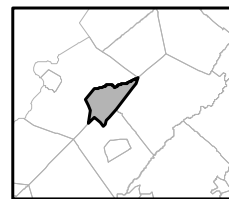
Exhibit 77: Preserved Farms, SADC Easements, All Agricultural Uses



SADC Easements

-  SADC Final
-  SADC Preserved
-  Preserved Farmland
-  Agriculture Uses
-  Preservation Area
-  Municipal Boundaries

Oxford Township

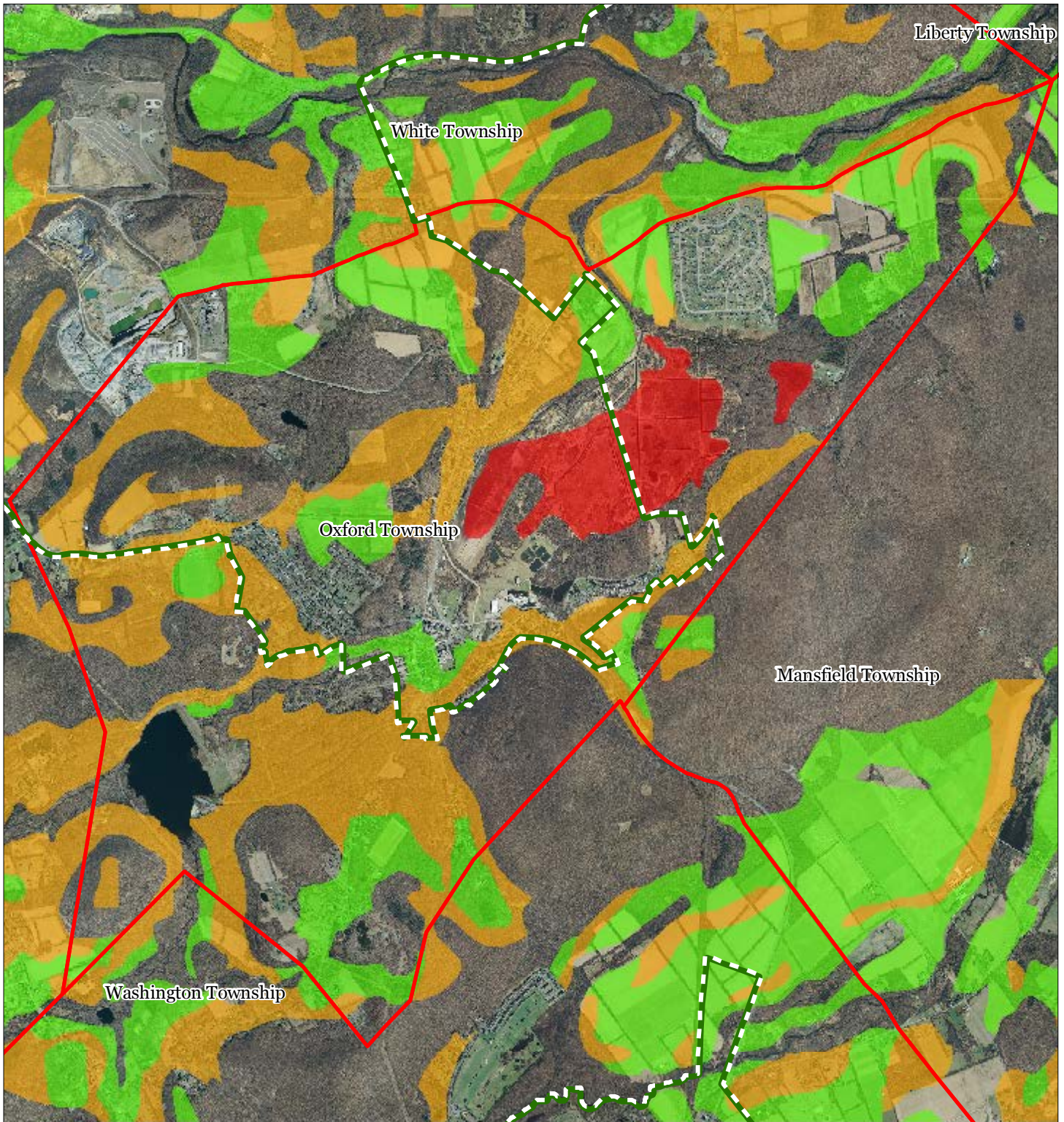


1 inch = 0.474 miles



October 2011

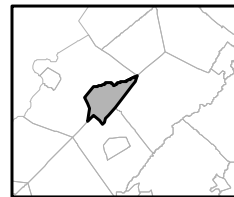
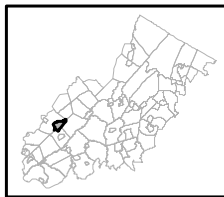
Exhibit 88: Important Farmland Soils



Important Farmland Soils

-  Prime Farmland
-  Farmland of Local Importance
-  Farmland of Statewide Importance
-  Farmland of Unique Importance
-  Preservation Area
-  Municipal Boundaries

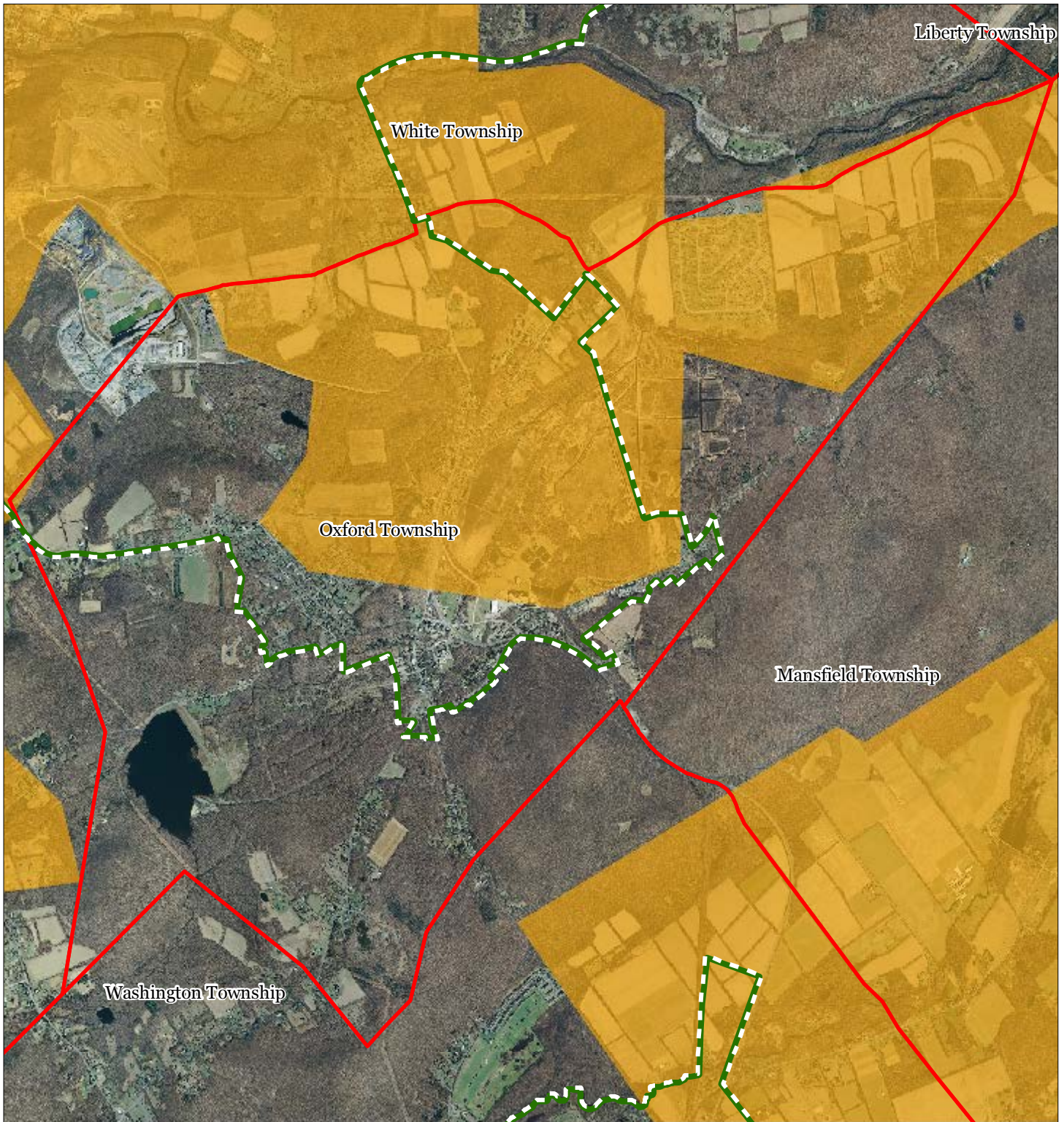
Oxford Township






1 inch = 0.474 miles

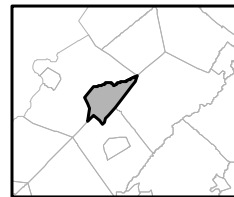


Exhibit 99: Agricultural Resource Area



-  Agricultural Resource Area
-  Preservation Area
-  Municipal Boundaries

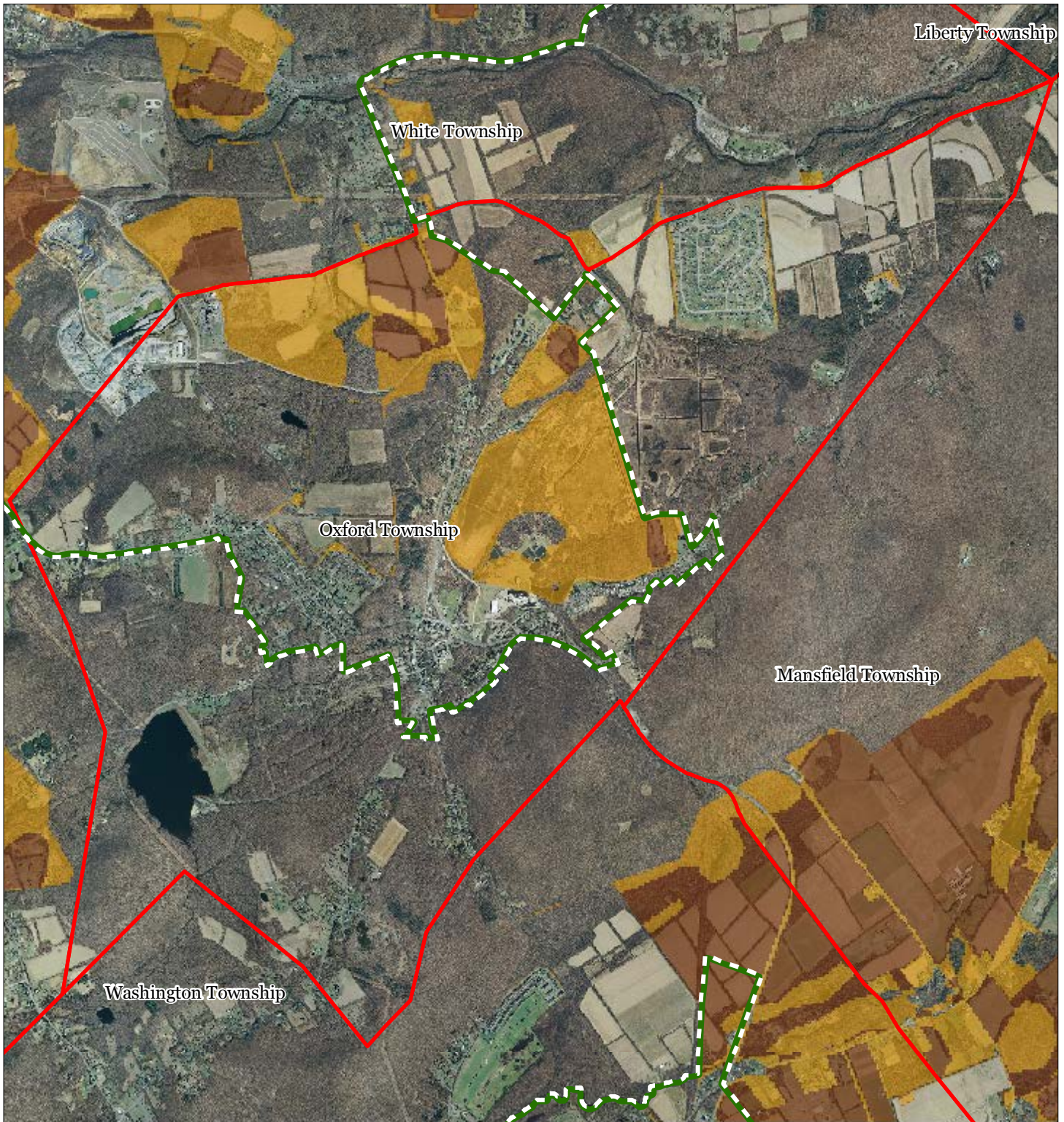
Oxford Township







1 inch = 0.474 miles



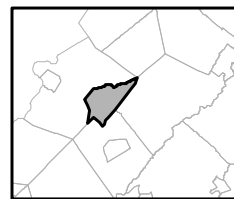
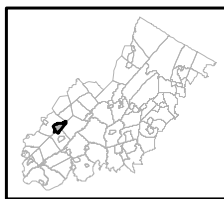
Exhibit : : : Agricultural Priority Area



Agricultural Priority Area

-  Moderate
-  High
-  Preservation Area
-  Municipal Boundaries

Oxford Township

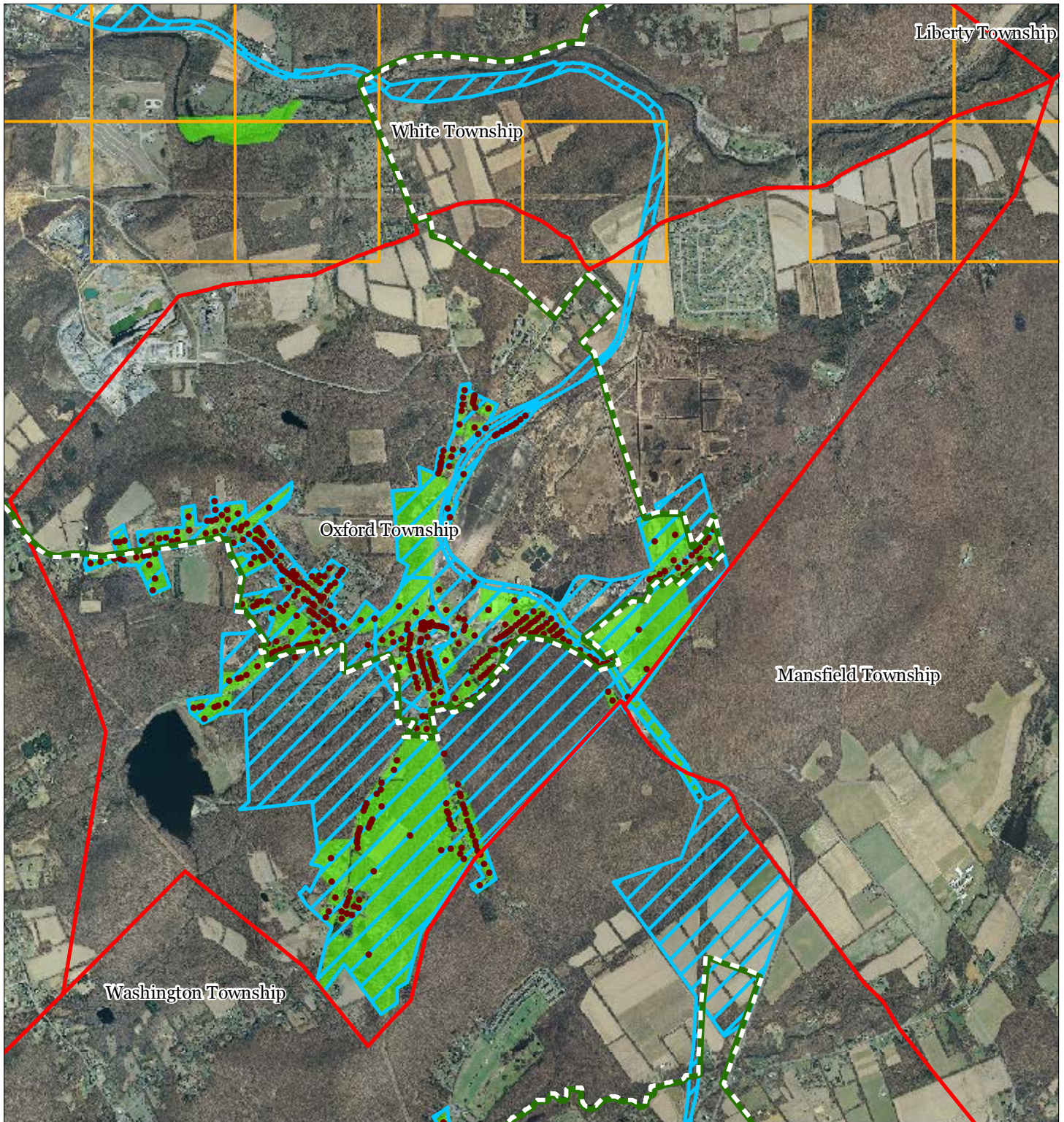


1 inch = 0.474 miles



October 2011

Exhibit GG: Historic, Cultural, and Archaeological Resources Inventory



-  Preservation Area
-  Municipal Boundaries
-  Archaeological Grids (1 sqmi)
-  NJ Historic Districts
-  Historic Property Points
-  Historic Property Polygons

Oxford Township

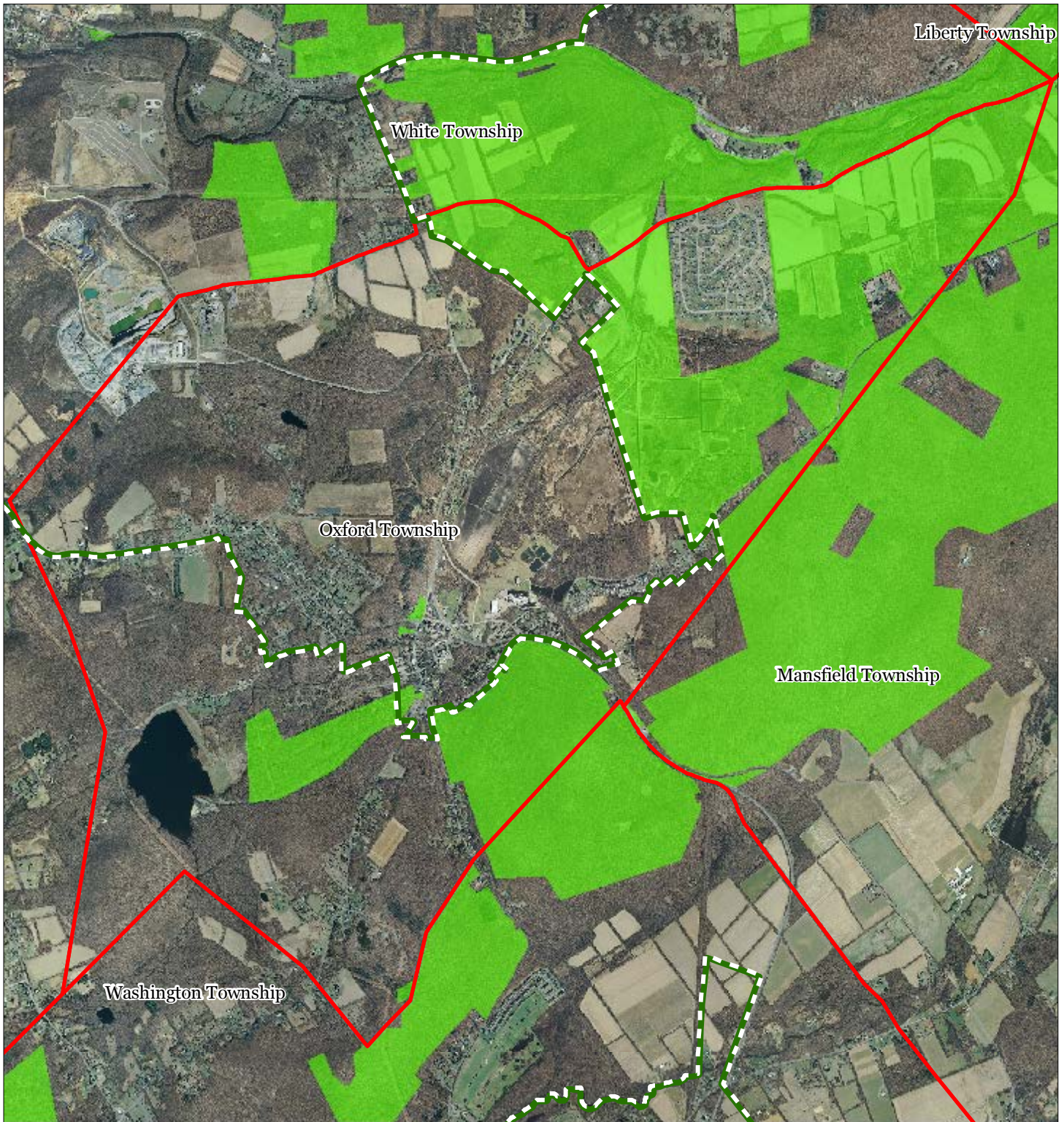


1 inch = 0.474 miles



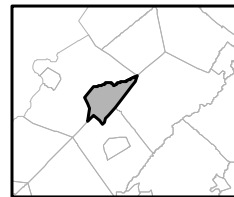
October 2011

Exhibit << : Baseline Scenic Resources Inventory



- Scenic Resources
- Municipal Boundaries
- Preservation Area

Oxford Township

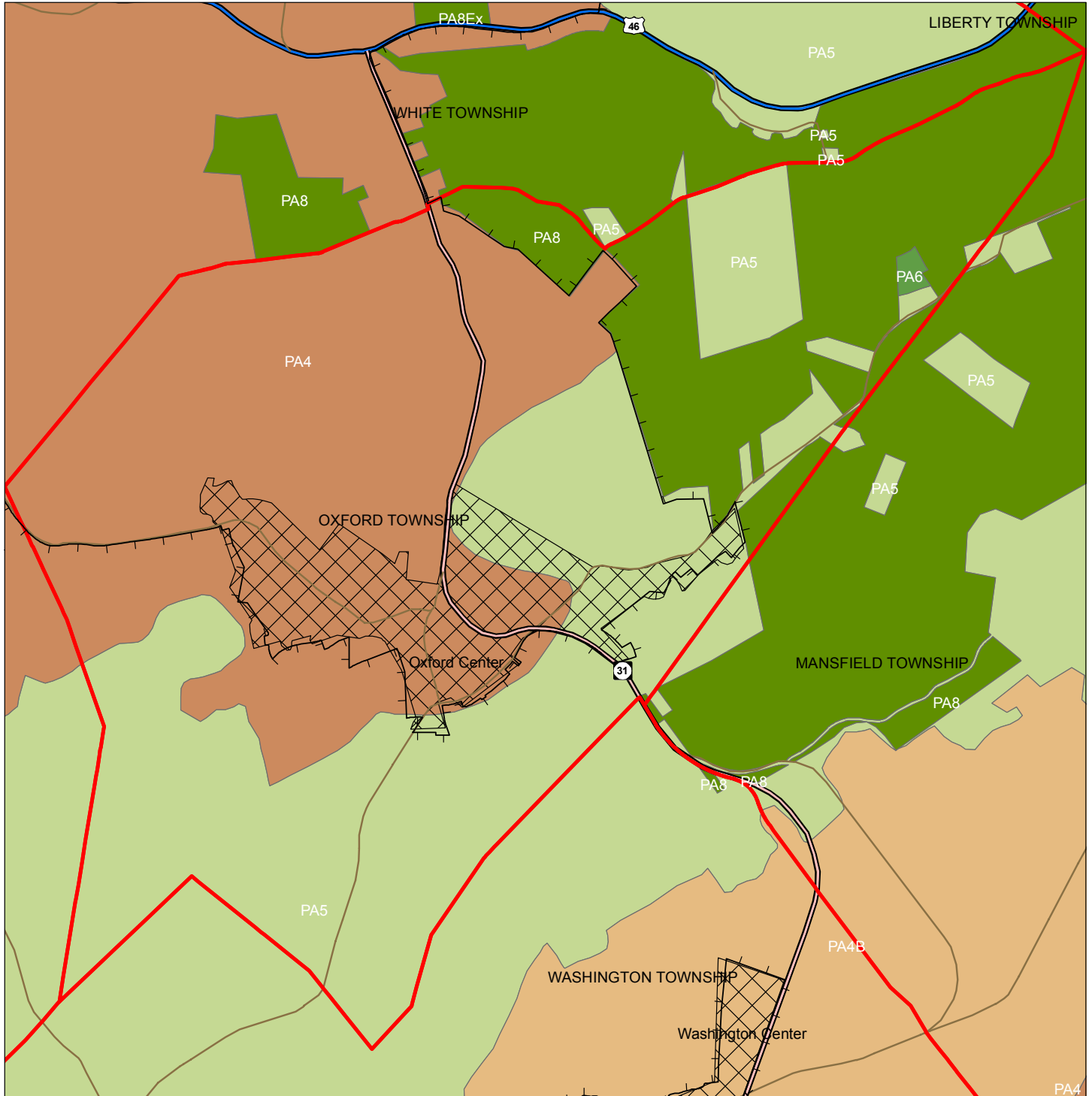


1 inch = 0.474 miles



October 2011

Exhibit II: S8FD Planning Areas & Designated Centers



Legend

- Preservation Area
- Municipal Boundaries
- Interstate Highways
- U.S. Routes
- State Routes
- County Routes
- Designated Centers*

State Planning Areas*

- METROPOLITAN (PA1)
- SUBURBAN (PA2)
- FRINGE (PA3)
- RURAL (PA4)
- RURAL ENVIRONMENTALLY SENSITIVE (PA42)

- ENVIRONMENTALLY SENSITIVE (PA5)
- PARK (PA6)
- FEDERAL PARK (PA7)
- STATE PARK (PA8)
- WATER (PA11)
- MILITARY (PA12)

1 inch equals 0.48 miles

* All designated centers expired on 1/7/2008 except Byram (expires 5/19/2010), Stanhope (expires 10/16/2008), and Sparta and Vernon (expire 7/16/2009). Center designation may be redesignated by the State Planning Commission and the Highlands Council. State Planning Areas are from the State Development and Redevelopment Plan.

