

## Looking Ahead



### Maternal and Infant Health Innovation Center

Developed in partnership with the New Jersey Economic Development Authority (NJEDA), the Maternal and Infant Health Innovation Center (The Center), located in Trenton, is a transformative, first-of-its-kind facility serving as an incubator for innovation and an academic and perinatal workforce training center.

The Center will offer a new standard of comprehensive clinical services to serve moms, provide direct social and wraparound supports, host a data collaborative, and so much more.

The Center is designed to serve as a statewide anchor for maternal and infant health innovation, integrating clinical care, education, workforce development, social services, and entrepreneurship under one roof.

Developed in collaboration with Rowan University, NJEDA, and NJMIHIA, the Center will also house the New Baby New Jersey Strategic Innovation Center (SIC).

This Trenton-based SIC will focus on driving breakthrough solutions in maternal care equity, digital health, doula support, perinatal mental health, and public benefits access.

The Center is more than a building—it is a movement toward equity, innovation, & sustainability in maternal and infant health.

The SIC will further the state's national leadership in maternal and infant health innovation, leveraging startups, academic institutions, public agencies, and community voices to advance maternal health equity and inventive medical technologies.



## Looking Ahead

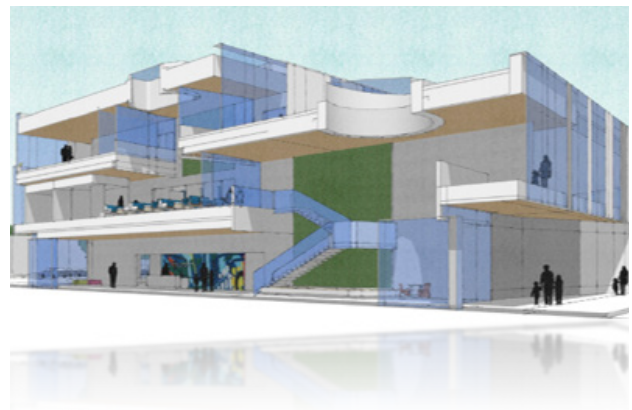
### A Hub for Innovation, Care and Collaboration

The Center is more than a building. It is a movement toward equity, innovation, and sustainability in maternal and infant health.

By uniting clinical care, education, research, and entrepreneurship, The Center will:

- Improve outcomes for birthing people and families
- Build a diverse, skilled perinatal workforce
- Scale community-driven solutions
- Serve as a replicable model for other states and regions

The Center will strengthen and transform New Jersey's leadership in maternal and infant health and position the state as a national model for integrated maternal care innovation. Our gold standard will serve as a global beacon for a world where all moms and babies flourish.



### Core Functions & Services

The Center will house five integrated pillars:



Pre- and post-natal clinical services



Perinatal workforce education & training



Social services and wraparound supports



Policy research and data collaboration



Maternal and Infant Health Innovation Incubator

### Anchor Tenants & Collaborators

The Center brings together a powerful coalition of public, academic, and private partners:

- **Trenton Health Team** – Lead Multi-Service Organization
- **Capital Health** – Lead Clinical Partner
- **Rutgers School of Nursing** – Higher education anchor, alongside Mercer County Community College, The College of New Jersey, Thomas Edison State University, and Stockton University
- **Rowan University, Cooper Institute, and Plug and Play** – Innovation and entrepreneurship partners

## Looking Ahead



### Strategic Innovation Center (SIC) Maternal and Medtech Accelerator

The New Baby New Jersey Strategic Innovation Center (SIC) will be located within the MIHIC and is one of 12 SICs across the state.

The SICs support research and development, innovation, and entrepreneurship through mentorship, networking opportunities, hands-on training, business support services, and educational programs.

Through this model, the New Baby New Jersey SIC will help bridge the gap between early-stage ideas and scalable solutions, fostering

collaboration among startups, healthcare providers, researchers, and community organizations to drive meaningful impact in maternal and infant health.

The New Baby New Jersey SIC, which will be managed by Plug and Play, will:

- Focus on medical technologies, digital health, and maternal health equity,
- Serve as a scaling hub for community-driven innovations, and
- Connect startups with academic and industry leaders to drive impact and economic growth.



## Looking Ahead

NJMIHIA enters the next phase of its work with a clear focus on translating strategy into sustained progress for mothers, babies, and families across New Jersey. Guided by the NJMIHIA Strategic Plan (2026–2029), the Authority will continue strengthening the maternal health workforce, expanding partnerships with community-based organizations, and scaling programs that improve access to high-quality perinatal care.

In the year ahead, NJMIHIA will deepen collaboration with healthcare providers, state agencies, and community leaders to accelerate solutions that address both the clinical and social factors influencing maternal and infant health outcomes.

Initiatives that support doulas, community health workers, and other perinatal professionals will remain central to this effort, alongside investments in programs that connect families to essential services and resources.

The Authority will also advance development of the Maternal and Infant Health Innovation Center in Trenton. As a statewide hub for research, workforce development, and cross-sector collaboration, the Center will help incubate innovative approaches and scale solutions that strengthen maternal and infant health systems across New Jersey.

To further elevate awareness and engagement around this work, NJMIHIA is finalizing a comprehensive communications strategy designed to promote the Authority's mission, programs, and impact, with implementation scheduled for launch in April 2026.

This strategy will strengthen public understanding of maternal and infant health challenges while deepening partnerships with healthcare providers, community organizations, and stakeholders across the state.

Through these efforts, NJMIHIA continues advancing its vision.



**A world  
where all  
mothers  
and babies  
*flourish***