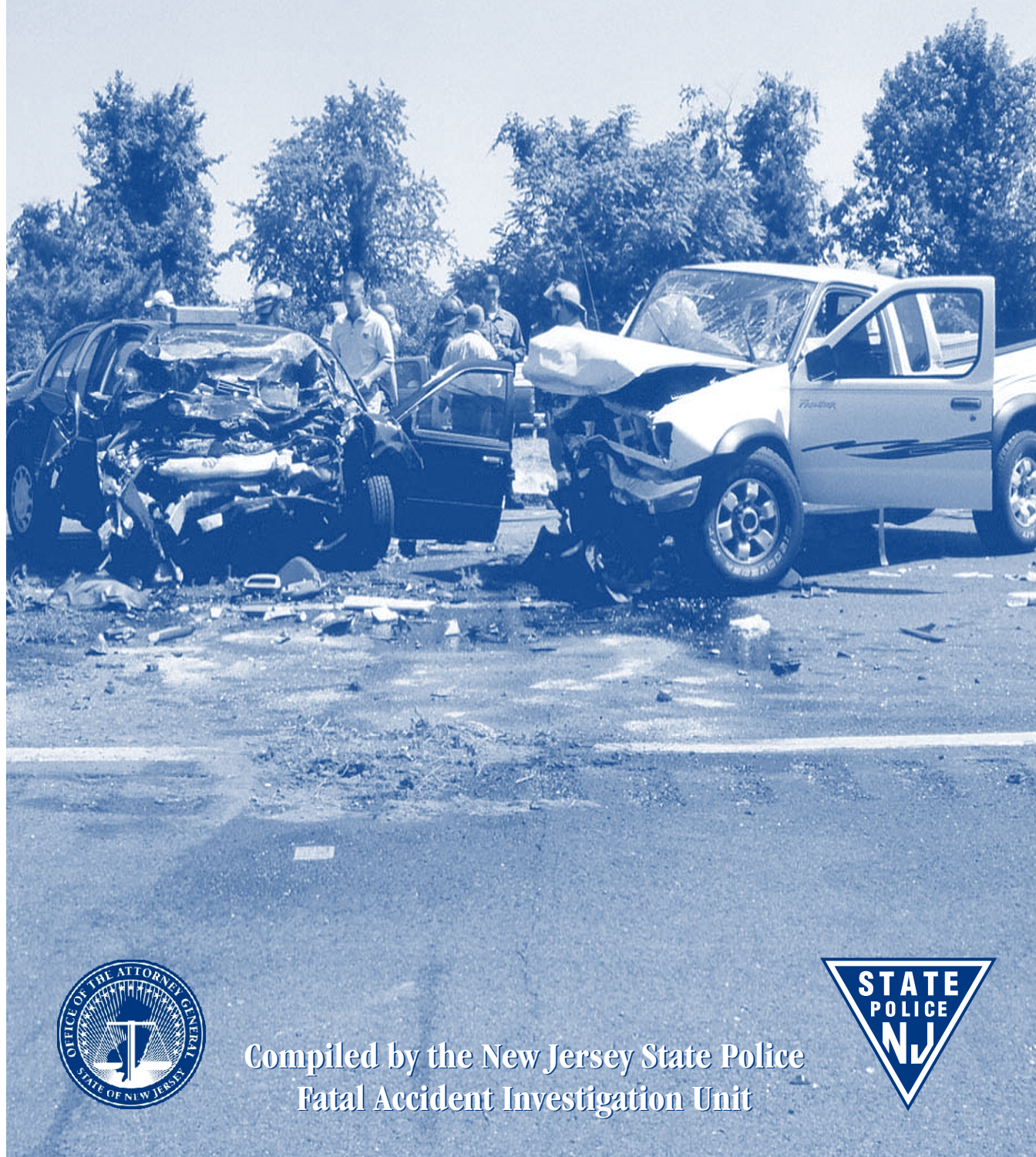


2004



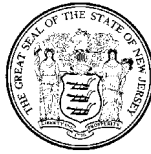
FATAL MOTOR VEHICLE ACCIDENT

COMPARATIVE DATA REPORT FOR THE STATE OF NEW JERSEY



Compiled by the New Jersey State Police
Fatal Accident Investigation Unit





State of New Jersey

OFFICE OF THE ATTORNEY GENERAL
DEPARTMENT OF LAW & PUBLIC SAFETY
DIVISION OF STATE POLICE
POST OFFICE BOX 7068
WEST TRENTON, NJ 08628-0068
(609) 882-2000

JON S. CORZINE
Governor

ZULIMA V. FARBER
Attorney General

COLONEL JOSEPH R. FUENTES
Superintendent

Dear Reader:

New Jersey continues to rank as one of the safest states in the nation. There were 684 fatal crashes and 723 fatalities in 2004. The New Jersey State Police is committed in its effort, through enforcement and education of the motoring public, to reduce the number of people killed in motor vehicle accidents.

Our efforts in reducing motor vehicle deaths on our roadways must continue, as highway fatalities are still a leading cause of death in New Jersey and the nation. The nationwide death toll of 42,636 people represents an average of more than 116 deaths per day.

On the following pages you will find statistics of the fatal motor vehicle accident records compiled by the Fatal Accident Investigation Unit of the Division of State Police for 2004. This report constitutes a detailed look at the causes and results of fatal accidents throughout the state during 2004. Hopefully, the continued efforts and cooperation of the public, federal, state, and local agencies will help us maintain our traffic safety record in the years ahead.

Sincerely,

Joseph R. Fuentes
Colonel
Superintendent



TABLE OF CONTENTS

STATISTICAL SUMMARY

	2004 Quick Facts	1
	2004 Motor Vehicle Fatal Accidents and Fatalities with a Comparison of the 1984-2004 Accidents and Fatalities	2
A.	Accident Victim Classification by Month	3
B.	Accidents and Fatalities by Month of Occurrence	4
C.	Accident Victim Classification by County	4
D.	Accidents by County of Occurrence and Roadway Classification	5
E.	Fatalities and Injuries According to Accident Type Classification	6
F.	Hours of Occurrence	7
G.	Weather Conditions	7
H.	Day of Occurrence	8
I.	Age of Driver Victims	8
J.	Age of Pedestrian Victims	8
K.	Sex of Pedestrians	9
L.	Condition of All Drivers	9
M.	Alcohol Factor	10
	Victim Alcohol Factor, 2000-2004 Comparison	11
	Victim Alcohol Factors for the Year 2004	11
N.	Alcohol Involvement of Deceased Drivers Related to Manner of Collision	12
O.	Manner of Collision	12
P.	Type of Vehicles Involved (Including Parked)	13
Q.	Character of Road	14
R.	Road Designation	14
S.	Age of Drivers	15
T.	Sex of Drivers	15
U.	What Drivers Were Doing	16
V.	What Pedestrians Were Doing	16
W.	Contributing Circumstances	17

SPECIFIC AREAS OF CONCERN

	Interstate Highway Fatalities	19
	Pedalcycle Accidents	20
	Motorcycle Accidents	21
	Tractor-Trailer Accidents	22
	Restraint Usage	23
	17 - 20 Age Group	24
	Fatal Accidents and Persons Killed for Selected Holiday Periods	25
	Ten Year Experience	26
	Fatal Accident Investigation Summary by Troop	27
	Fatal Accidents by County, Municipality, Date, Time and Location	31
	Map - Fatalities by County	43

QUICK FACTS

- Nationwide, the fatality rate remained at a historic low of 1.46 fatalities per hundred million vehicle miles traveled.
- Nationwide preliminary statistics indicate there were 42,636 people killed.
- In New Jersey, there were 684 fatal accidents with 723 people killed.
- There was an increase of 18 fatal accidents and a decrease of 12 fatalities.
- Of the fatalities, 33.0 % had consumed alcohol to some extent.
- Of all drivers, 11.4 % were legally intoxicated.
- An average of 2.01 persons were killed every day.
- There were 74 fatal accidents involving 74 motorcycles.
- Pedalcyclists accounted for 16 fatal accidents.
- The pedestrian death toll was 151.
- There were a total of 42 hit-and-run fatal accidents involving 55 vehicles. The victims were comprised of 7 drivers, 8 passengers and 29 pedestrians.
- Of the 1099 drivers listed, 28 New Jersey drivers and 2 out-of-state drivers were suspended. There were 29 drivers without valid licenses.
- There are 38,123 miles of open public roads in the state of New Jersey, indicating one death for every 52.7 miles.
- Straight roads were involved in 57.8 % of all fatal accidents.
- Of all fatal accidents, 85.3 % occurred during clear weather conditions.
- Of the known drivers involved in fatal accidents, 74.7 % were males.
- Of the vehicles involved in fatal accidents, 56.6 % involved passenger cars.
- There were 45 tractor-trailers involved in 41 fatal accidents which resulted in 43 fatalities.

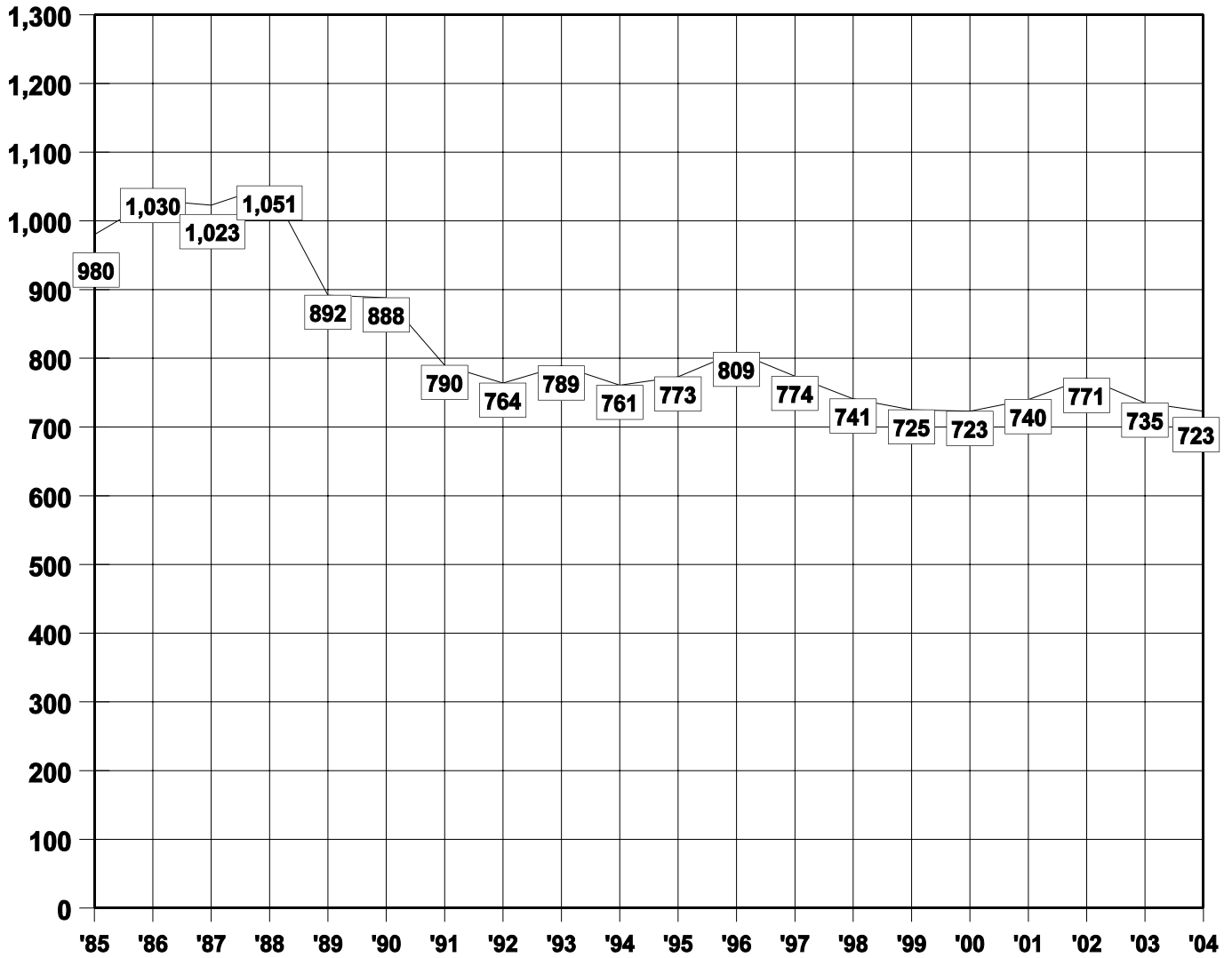
SUBJECT

Statistical Summary of 2004 Motor Vehicle Fatal Accidents and Fatalities with a Comparison of the 2000-2004 Accidents and Fatalities.

Statistics	2000	2001	2002	2003	2004
Fatal Accidents	655	677	699	666	684
Fatalities	723	740	771	735	723

TREND IN FATALITIES

20 Year Trend



A. VICTIM CLASSIFICATION BY MONTH - 2004

Month	Driver	Passenger	Pedestrian	Pedalcyclist	Totals
January	33	9	10	0	52
February	34	6	8	1	49
March	29	9	9	1	48
April	27	6	9	2	44
May	30	13	16	1	60
June	43	11	9	3	66
July	45	10	10	3	68
August	43	11	12	1	67
September	35	14	19	1	69
October	43	18	15	0	76
November	30	14	13	1	58
December	33	10	21	2	66
Totals	425	131	151	16	723

B. ACCIDENTS AND FATALITIES BY MONTH OF OCCURRENCE

Month	Accidents					Fatalities				
	2000	2001	2002	2003	2004	2000	2001	2002	2003	2004
January	60	46	69	56	49	64	47	74	60	52
February	41	53	50	43	47	44	57	52	46	49
March	37	54	52	47	45	40	62	55	51	48
April	48	39	54	47	44	54	40	61	50	44
May	64	58	43	54	58	69	63	48	70	60
June	69	64	65	76	64	78	71	73	88	66
July	58	62	62	56	62	64	69	72	59	68
August	52	53	54	72	65	58	60	59	81	67
September	58	60	75	53	64	64	65	82	56	69
October	63	60	76	59	69	71	62	86	64	76
November	58	55	48	57	55	65	63	51	60	58
December	47	73	51	46	62	52	81	58	50	66
TOTAL	655	677	699	666	684	723	740	771	735	723

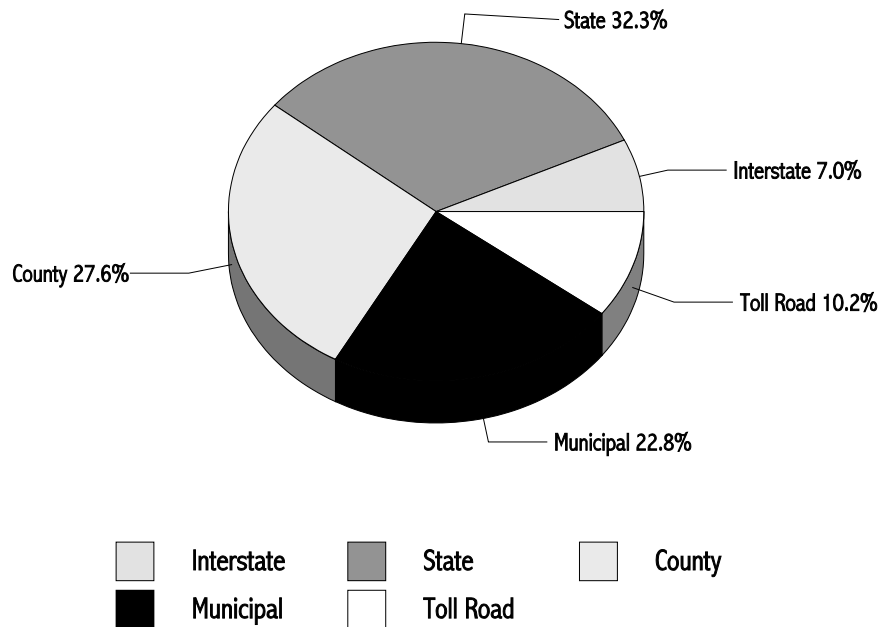
C. ACCIDENT VICTIM CLASSIFICATION BY COUNTY

County	Victim Classification					
	Accidents	Killed	Driver	Passenger	Pedestrian	Pedalcyclist
Atlantic	37	39	23	5	11	0
Bergen	47	47	21	8	15	3
Burlington	55	56	38	11	4	3
Camden	32	35	20	7	7	1
Cape May	15	15	7	2	6	0
Cumberland	16	18	11	5	2	0
Essex	64	71	32	16	21	2
Gloucester	24	26	20	5	1	0
Hudson	17	19	10	4	4	1
Hunterdon	9	10	6	2	2	0
Mercer	30	31	20	6	5	0
Middlesex	56	57	34	8	14	1
Monmouth	47	47	28	6	11	2
Morris	34	36	22	9	5	0
Ocean	63	66	43	15	7	1
Passaic	25	27	14	4	9	0
Salem	17	22	17	5	0	0
Somerset	18	18	12	3	3	0
Sussex	20	21	17	2	1	1
Union	43	45	17	6	21	1
Warren	15	17	13	2	2	0
TOTAL	684	723	425	131	151	16

D. ACCIDENTS BY COUNTY OF OCCURRENCE AND ROADWAY CLASSIFICATION

County	Interstate	State	County	Municipal	Toll Roads	TOTALS
Atlantic	0	14	10	6	7	37
Bergen	3	11	16	13	4	47
Burlington	2	10	25	11	7	55
Camden	3	15	7	5	2	32
Cape May	0	7	5	0	3	15
Cumberland	0	5	7	4	0	16
Essex	1	18	16	27	2	64
Gloucester	2	8	9	4	1	24
Hudson	1	2	2	8	4	17
Hunterdon	5	2	1	1	0	9
Mercer	3	13	4	6	4	30
Middlesex	0	21	14	12	9	56
Monmouth	0	19	9	13	6	47
Morris	16	8	6	4	0	34
Ocean	0	18	24	6	15	63
Passaic	0	7	2	15	1	25
Salem	2	4	8	3	0	17
Somerset	4	4	7	3	0	18
Sussex	0	10	6	4	0	20
Union	1	21	6	10	5	43
Warren	5	4	5	1	0	15
TOTAL	48	221	189	156	70	684

Breakdown in Percentages of 684 Accidents during 2004



E. FATALITIES AND INJURIES ACCORDING TO ACCIDENT TYPE CLASSIFICATION

Type	Total Accidents					Total Fatalities					Total Injured				
	2000	2001	2002	2003	2004	2000	2001	2002	2003	2004	2000	2001	2002	2003	2004
Pedestrian	143	130	169	136	148	146*	130	176	137	152**	83	34	34	38	31
Other Motor Vehicle	286	293	260	284	274	329	336	302	330	297	529	565	410	451	474
Railroad Train	3	2	0	3	4	3	2	0	3	5	0	0	0	0	0
Parked Vehicle	11	9	12	9	11	12	9	13	9	11	4	5	10	7	10
Pedalcycle	14	25	15	11	16	13	25	15	11	16	2	0	3	1	2
Animal	1	0	1	2	1	1	0	1	2	0	2	0	0	0	0
Fixed/Other Object	179	197	211	205	205	200	217	230	227	217	113	108	103	160	109
Non-Collision	16	21	31	15	25	17	21	34	15	25	6	8	16	16	18
Other Type Vehicle	2	0	0	1	0	2	0	0	1	0	1	0	0	1	0
TOTAL	655	677	699	666	684	723	740	771	735	723	740	720	576	674	644

In 2004 there were 684 fatal crashes in which 723 persons were killed and 644 persons injured.

** In 2004 one motor vehicle driver was killed in a pedestrian crash. In 2004 there were 3 pedestrian crashes where 2 pedestrians were killed.

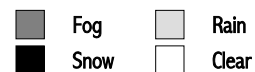
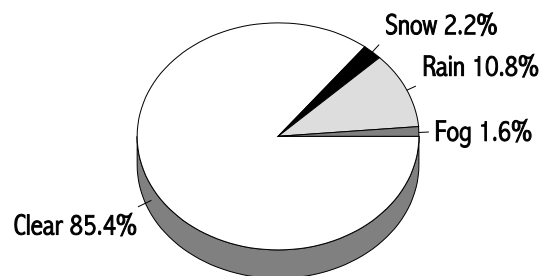
* In 2000 two motor vehicle drivers were killed in pedestrian crashes.

F. HOURS OF OCCURRENCE

Time of Occurrence	2000	2001	2002	2003	2004
12:00 to 12:59 a.m.	25	24	34	38	26
1:00 to 1:59 a.m.	28	29	37	32	30
2:00 to 2:59 a.m.	30	32	30	28	32
3:00 to 3:59 a.m.	21	23	25	15	27
4:00 to 4:59 a.m.	17	14	12	12	20
5:00 to 5:59 a.m.	11	19	21	17	21
6:00 to 6:59 a.m.	19	35	23	21	25
7:00 to 7:59 a.m.	35	25	24	24	14
8:00 to 8:59 a.m.	25	19	24	27	20
9:00 to 9:59 a.m.	19	27	27	16	18
10:00 to 10:59 a.m.	21	25	20	23	28
11:00 to 11:59 a.m.	13	25	23	32	29
12:00 to 12:59 p.m.	28	23	26	23	29
1:00 to 1:59 p.m.	30	23	37	30	24
2:00 to 2:59 p.m.	36	42	36	36	37
3:00 to 3:59 p.m.	33	33	28	45	26
4:00 to 4:59 p.m.	41	39	24	33	38
5:00 to 5:59 p.m.	42	37	35	38	49
6:00 to 6:59 p.m.	32	36	49	38	31
7:00 to 7:59 p.m.	38	28	31	28	36
8:00 to 8:59 p.m.	27	34	27	18	34
9:00 to 9:59 p.m.	32	27	37	32	37
10:00 to 10:59 p.m.	30	32	36	26	24
11:00 to 11:59 p.m.	22	26	33	34	29
Unknown	0	0	0	0	0
TOTAL	655	677	699	666	684

G. WEATHER CONDITIONS

Clear	584
Rain	74
Snow	15
Fog	11
Other	0
Total	684



H. DAY OF OCCURRENCE

Day of Occurrence	2000	2001	2002	2003	2004
Sunday	112	131	109	89	127
Monday	82	88	80	92	83
Tuesday	82	74	99	88	64
Wednesday	85	78	92	98	85
Thursday	81	83	99	96	93
Friday	100	105	119	98	129
Saturday	113	118	101	105	103
Unknown	0	0	0	0	0
TOTAL	655	677	699	666	684

I. AGE OF DRIVER VICTIMS

Age of Driver	Number Killed				
	2000	2001	2002	2003	2004
16 and under	2	5	3	5	2
Age 17	12	9	9	10	6
18 - 20	33	44	44	31	40
21 - 24	40	51	49	42	46
25 - 29	49	47	37	40	42
30 - 39	83	74	68	69	79
40 - 49	54	45	57	71	62
50 - 64	58	54	52	75	77
65 and older	83	86	99	73	70
Unknown	1	2	1	0	1
TOTAL	415	417	419	416	425

J. AGE OF PEDESTRIAN VICTIMS

Age of Pedestrian	Number Killed				
	2000	2001	2002	2003	2004
0 - 4	4	4	4	2	2
5 - 9	2	4	6	1	2
10 - 14	5	2	5	1	7
15 - 19	7	2	5	3	12
20 - 24	7	6	8	11	6
25 - 44	38	36	43	34	44
45 - 64	48	38	48	45	39
65 - 74	11	16	26	15	16
75 and older	22	21	29	22	23
Unknown	0	1	2	3	0
TOTAL	144	130	176	137	151

K. SEX OF PEDESTRIANS

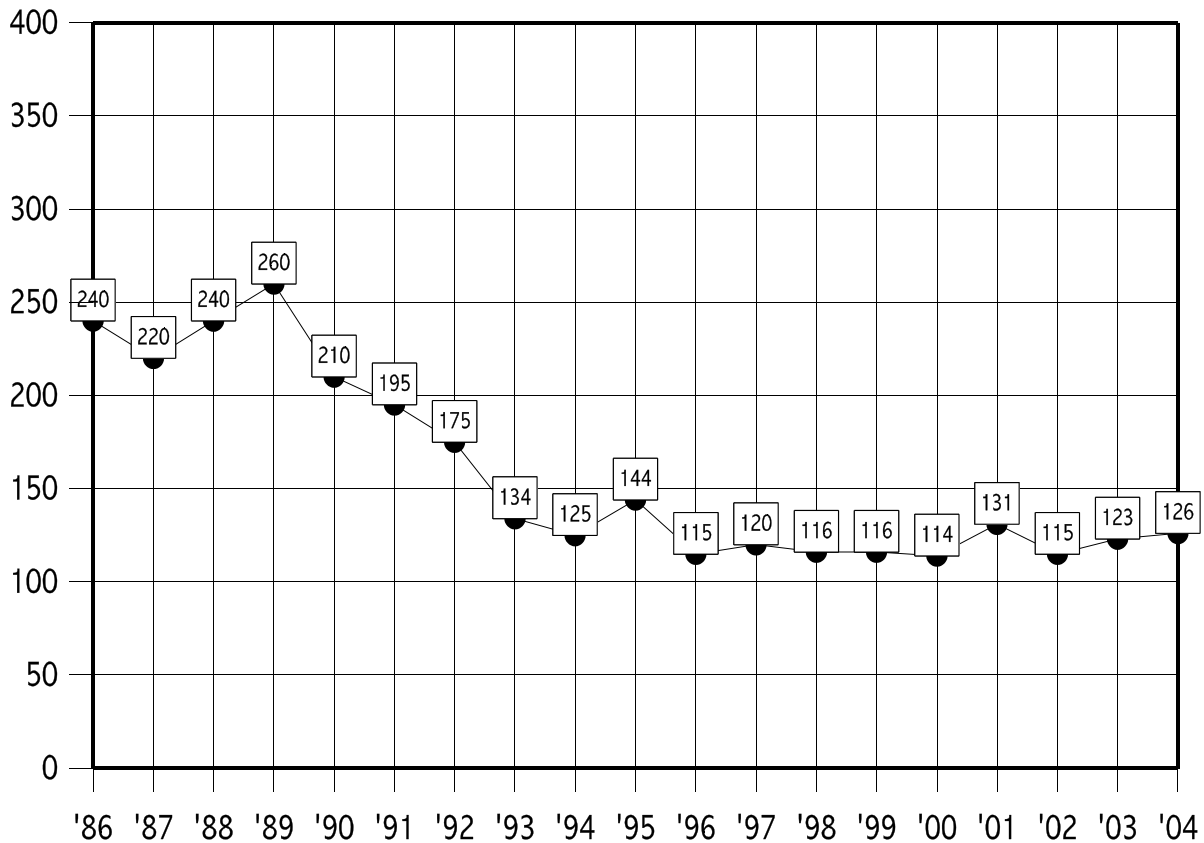
Sex	2000	2001	2002	2003	2004
Male	97	85	119	96	93
Female	47	45	57	41	58
TOTAL	144	130	176	137	151

L. CONDITION OF ALL DRIVERS

Condition	Drivers
Had been drinking	44
Intoxicated	126
Defective Eyesight	1
Under influence of drugs/positive drugs	29
Other bodily defects	2
Ill or fatigued	15
Apparently Asleep or sleepy	9
Other handicaps	0
Apparently Normal	761
Parked/Unknown	112
TOTAL	1,099

20 YEAR TREND

Intoxicated Drivers Involved in Fatal Accidents



M. ALCOHOL FACTOR

There were 723 fatalities during 2004. Of the fatalities, 425 were drivers, 131 were passengers, 151 were pedestrians and were 16 pedalcyclists. Of this total, 605 were tested for alcohol and 118 were not tested. Of the 605 tested, 193 were positive for alcohol in varying degrees and 366 were negative. This indicates that 31.9% of the fatalities tested were positive for alcohol and 60.5 % were negative. Twenty three drivers, 10 passengers, 12 pedestrians and 1 pedalcyclist tested positive for drugs.

In 164 of the 684 accidents, Driving While Intoxicated (alcohol and/or drugs) was listed as the major contributing factor. There were 180 people killed as a result of these 164 accidents.

1.) DRIVERS:

Deceased: There were a total of 425 drivers killed of which 372 were tested. Of those tested, 121 were positive and 228 were negative, indicating 32.5 % had consumed an alcoholic beverage. Of the 121 imbibing drivers, 89 or 73.5 % had an alcohol level of .08 % or higher. Twenty three deceased drivers tested positive for drugs.

Surviving: There were a total of 674 surviving drivers of which 205 were tested. Of those tested, 48 were positive and 140 were negative, indicating 23.4 % had consumed an alcoholic beverage. Of the 48 imbibing drivers, 37 or 77.1 % had an alcohol level of .08 % or higher. Sixteen surviving drivers tested positive for drugs.

2.) **Passengers:** There were a total of 131 passengers killed of which 88 were tested. Of those tested, 26 were positive and 52 negative, indicating 29.5 % had consumed an alcoholic beverage. Ten passengers tested positive for drugs.

3.) **Pedestrians:** There were a total of 151 pedestrians killed of which 131 were tested. Of those tested, 42 were positive and 77 were negative for an alcohol factor of 32.1 %. Twelve pedestrians tested positive for drugs.

4.) **Pedalcyclists:** There were a total of 16 pedalcyclists killed of which 14 were tested. Of those tested, 3 tested positive and 9 tested negative. One pedalcyclist tested positive for drugs and 1 was listed as "Had been drinking".

SURVIVING DRIVER ALCOHOL FACTORS

	.01 - .03%	.04 - .07%	.08 - .10%	.11 & over	Negative	No Test	Total
Drivers	5	6	3	34	140	469	657

NOTE: Sixteen surviving drivers tested positive for drugs and one surviving driver was listed as "Had been drinking."

In 2004, the Blood Alcohol Content (BAC) threshold for Driving Under the Influence of Alcohol and/or Drugs was changed from .10% to .08 %. On this and the following pages, the categories showing the various levels of alcohol involvement were modified to reflect the change in the BAC level.

In the Victim Alcohol Factor 2000 - 2004 Comparison chart, the positive alcohol categories for the years 2000 to 2003 reflect prior BAC ranges. The .01 to .03 % BAC category includes 2000 to 2003 BAC readings of .01% to .04%. The .04 to .07% BAC category includes 2000 to 2003 BAC readings of .05% to .09%. The .08 to .10% BAC category includes 2000 to 2003 BAC readings of .10% to .14%. The .11 and Over category includes 2000 to 2003 BAC readings of .15% and over.

EVALUATION:

Two thousand and four showed no increase in alcohol-related fatalities. The number of fatal accident victims with blood alcohol readings above the legal limit increased from 139 in 2003 to 145 in 2004, an increase of 4%. Deceased drivers with alcohol involvement showed no increase when compared to 2003 .

VICTIM ALCOHOL FACTOR 2000 - 2004 COMPARISON

	.01% - .03%				.04% - .07%				.08% - .10%				.11% and Over							
	2000	2001	2002	2003	2000	2001	2002	2003	2000	2001	2002	2003	2000	2001	2002	2003	2000	2001	2002	2003
	27	23	28	22	22	24	19	25	41	23	34	32	14	112	107	107	131	107	121	107
Drivers	15	11	15	14	16	13	10	11	12	15	28	23	9	74	71	70	80	69	71	70
Passengers	7	7	8	6	3	6	6	9	3	4	2	6	4	13	11	7	15	9	11	7
Pedestrians	4	4	5	2	2	5	3	5	4	11	4	3	1	22	37	30	33	25	37	30
Pedalcyclists	1	1	0	0	0	0	0	0	0	0	0	0	0	3	2	0	3	4	2	0
TOTAL	27	23	28	22	21	24	19	25	19	41	34	32	14	112	107	107	131	107	121	107
	Had been drinking				Negative				No Test				TOTAL							
Drivers	3	6	3	2	4	194	212	225	228	70	57	56	53	397	396	401	402	395	396	401
Passengers	1	0	0	0	1	75	64	83	52	44	67	57	43	148	158	168	121	165	158	168
Pedestrians	3	0	1	4	2	67	98	60	77	28	28	29	20	138	176	133	139	128	176	133
Pedalcyclists	0	0	0	0	1	5	11	8	9	3	1	3	2	12	14	11	15	23	14	11
TOTAL	7	6	4	6	8	341	385	376	366	145	153	145	118	695	744	713	677	711	744	677

There were 46 Victims that tested positive for drugs.

VICTIM ALCOHOL FACTORS FOR THE YEAR 2004

	.01% - .03%	.04% - .07%	.08% - .10%	.11% & Over	Had been drinking	Negative	Not tested	TOTAL
Drivers	16	12	9	80	4	228	53	402
Passengers	3	3	4	15	1	52	43	121
Pedestrians	2	4	1	33	2	77	20	139
Pedalcyclists	0	0	0	3	1	9	2	15
TOTAL	21	19	14	131	8	366	118	677

LEGEND: Had been drinking: includes those delayed deaths where an odor of alcohol was detected. Includes admittance of victim (in delayed death) or statements of witnesses.
 Includes lab reports which show a trace and not a percentage, or reading below 0.01%.

NEGATIVE: Tested and found to be negative.

NO TEST: Because of delayed death, age factor, contamination of samples, and the failure on the part of some investigative agencies and medical examiners to cause a test to be performed on victims.

NOTE: Twenty three drivers, 10 passengers, and 12 pedestrians tested positive for drugs.

N. ALCOHOL INVOLVEMENT OF DECEASED DRIVERS RELATED TO MANNER OF COLLISION

Manner of Collision	.01% - .07% Had been drinking	Under the Influence	Positive for Drugs
Angle	4	6	3
Same direction - rear end	0	2	4
Same direction - other	1	4	1
Opposite direction - head on	1	10	6
Opposite direction - left turn	3	0	0
Fixed object	15	54	9
Pedestrian	0	0	0
Railroad train	0	0	0
Pedalcycle	0	0	0
Struck parked vehicle	1	1	0
Ran off roadway	4	6	0
Overtuned in roadway	2	3	0
Other object	0	0	0
Sideswipe	1	2	0
Fell from vehicle	0	1	0
Fell in vehicle	0	0	0
TOTAL	32	89	23

O. MANNER OF COLLISION

Manner of Collision - All Accidents	2000	2001	2002	2003	2004
Angle	125	144	118	138	113
Same direction - rear end	43	43	53	52	36
Same direction - other	6	6	8	7	12
Opposite direction - head on	95	75	61	66	91
Opposite direction - left turn	10	15	11	12	11
Fixed object	180	195	211	205	180
Pedestrian	143	130	169	136	148
Other*	45	60	55	41	56
Ran off road	3	3	8	2	26
Sideswipe	5	6	5	7	11
TOTAL	655	677	699	666	684

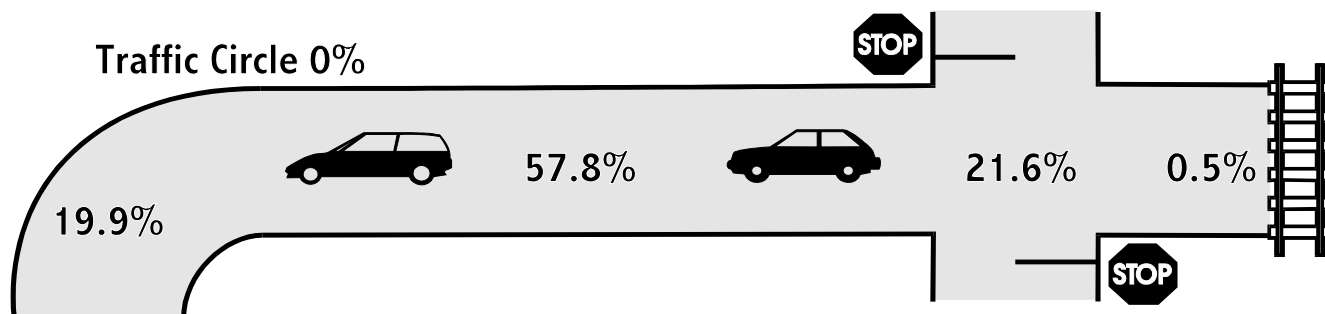
*Other category includes: Railroad train, parked vehicle, animal, other object, fell from vehicle, pedalcycle involvement, overturned vehicle, and fell in vehicle.

P. TYPE OF VEHICLES INVOLVED *(Including Parked)*

Type of Vehicle	Fatal Accidents				
	2000	2001	2002	2003	2004
Passenger vehicle	683	681	676	625	621
Passenger vehicle w/trailer	0	0	0	2	1
Recreation vehicle	2	0	0	0	1
Taxicab / Limo	3	5	7	5	3
Motorcycle	55	73	53	57	74
Moped	0	0	0	0	2
Pickup / Sport Utility	178	184	196	203	215
Van / Step Van	44	41	38	49	41
Fire / Rescue	0	0	0	0	0
Police Vehicle	3	8	4	2	4
Ambulance	1	4	3	1	1
Bus	10	6	10	8	8
School Bus	4	4	3	4	5
Single Unit 2-Axle	31	22	25	24	38
Single Unit 3-Axle	19	12	17	10	23
Truck / Trailer	7	7	1	14	5
Truck (Bobtail)	3	6	3	5	0
Semi-Trailer (Tractor-Trailer)	40	34	38	53	45
Doubles	0	3	2	2	0
Triples	0	0	0	0	0
Heavy Truck	3	5	0	4	3
Other	29	38	26	20	25
TOTAL	1,115	1,133	1,102	1,088	1,115

Q. CHARACTER OF ROAD

Road character	Fatal Accidents				
	2000	2001	2002	2003	2004
Straight road	347	373	402	353	396
Sharp curve or turn	9	7	5	10	10
Other curves	118	95	115	110	126
Circle	1	0	0	0	0
Intersection	177	200	177	191	148
Railroad crossing	3	2	0	2	4
TOTAL	655	677	699	666	684



R. ROAD DESIGNATION

Road Designation	Fatal Accidents				
	2000	2001	2002	2003	2004
State	126	122	115	127	131
County	208	196	200	171	189
Township	67	65	67	112	96
U.S.	91	90	102	96	90
Borough or City	81	92	92	65	60
State Park	0	0	0	0	0
Garden State Parkway	25	37	40	28	40
Federal (Interstate)	31	46	50	39	48
New Jersey Turnpike	21	25	30	23	25
Atlantic City Expressway	5	4	3	5	5
Institution	0	0	0	0	0
TOTAL	655	677	699	666	684

Note: Sections of the Interstate Highway System run concurrent with other highways.

S. AGE OF DRIVERS

Age of Driver	Fatal Accidents				
	2000	2001	2002	2003	2004
16 and under	9	9	4	6	6
Age 17	26	28	22	32	13
18 - 20	87	93	101	90	87
21 - 24	94	116	115	116	94
25 - 29	120	140	115	90	102
30 - 39	212	215	194	201	219
40 - 49	186	156	162	203	205
50 - 64	162	160	169	163	200
65 and over	140	137	149	126	126
Unknown*	66	54	56	47	47
TOTAL	1,102	1,108	1,087	1,074	1,099

T. SEX OF DRIVER

Sex of Drivers	Fatal Accidents				
	2000	2001	2002	2003	2004
Male	771	804	790	782	789
Female	278	257	247	249	267
Unknown	53	47	50	43	43
TOTAL	1,102	1,108	1,087	1,074	1,099

*Unknown includes hit-and-run and parked vehicle accidents where driver information is not included.

U. WHAT DRIVERS WERE DOING

What Drivers Were Doing	Fatal Accidents				
	2000	2001	2002	2003	2004
Making right turn	11	5	5	10	8
Making left turn	59	59	51	61	52
Making "U" turn	6	9	7	3	3
Going straight ahead	660	745	696	698	783
Slowing down, stopping	17	14	10	12	13
Overtaking (Passing on right)	4	5	2	3	6
Forward from parking space	0	1	0	0	0
Backward from parking space	0	1	0	0	0
Other backing	4	8	4	3	4
Stopped in traffic lane	49	43	41	45	41
Starting from a traffic lane	3	13	8	7	2
Starting from a parked position	1	0	2	1	2
Parked	39	29	41	25	22
Skidding	7	7	10	11	6
Passing on left	14	9	8	5	7
Avoiding vehicle, object, pedestrian	17	14	25	13	18
Emerging from alley or driveway	11	6	7	15	6
Unknown	44	57	64	42	26
Crossing highway through island	1	0	0	0	0
Being towed or pushed	0	0	1	0	0
Pushing or towing vehicle	0	0	0	0	0
Stalled on railroad tracks	0	0	0	0	0
Rounding curve or circle	131	62	87	100	72
Entering highway	4	4	2	0	5
Changing lanes	20	17	15	20	23
Other	0	0	1	0	0
TOTAL	1,102	1,108	1,087	1,074	1,099

V. WHAT PEDESTRIANS WERE DOING

What Pedestrians Were Doing	Fatal Accidents				
	2000	2001	2002	2003	2004
Standing in Roadway	7	8	13	9	13
Walking with traffic	10	13	14	11	14
Crossing roadway	102	91	134	105	98
Walking on sidewalk	3	6	6	4	7
Standing on shoulder	4	4	0	1	11
Other	18	8	9	7	8
TOTAL	144	130	176	137	151

64.9 % of all pedestrian fatalities in 2004 occurred while attempting to cross a roadway.

W. CONTRIBUTING CIRCUMSTANCES

Contributing Circumstances	2000	2001	2002	2003	2004
Exceeding lawful speed	20	30	30	30	29
Too fast for conditions	49	29	29	41	36
Following too closely	2	2	1	2	2
On wrong side of road	24	14	12	16	29
Did not have right-of-way	28	27	22	25	27
Driver fell asleep	19	8	14	7	9
Failure to signal	0	0	0	0	0
Improper turn	24	31	25	22	14
Passing on hill or curve	0	0	0	0	0
Other improper passing	3	7	7	3	5
Inattentive driving	109	146	143	140	175
Improper crossing center island	1	2	0	2	0
Disregarding stop sign	22	41	47	34	31
Disregarding traffic light	23	22	15	30	20
Passing left of center line	1	0	0	0	0
Drunken driving	154	153	151	138	142
Improper starting from curb	0	0	0	0	1
Drunken bicyclist * 1 Drugs	2*	4	3*	0	3
Improper parking	0	1	1	5	2
Failure to keep right	29	21	10	21	13
Mechanical failure	4	4	1	2	4
Improper lights	1	3	3	1	1
Backing on highway	1	1	0	0	0
Stopped in roadway	2	0	2	3	2
Passed stopped school bus	0	0	0	0	0
Animal in roadway	5	1	1	4	2
Cutting in	3	5	1	2	1
Tire blew out	2	0	4	2	3
Other	34	28	59	74	26
Passing on right	2	0	0	0	3
Pedestrian violation	85	77	126	99	104
Unknown	59	57	46	38	28
Driver under influence of drugs	13	15	18	10	21
Pedestrian under influence of drugs	0	0	0	0	1
TOTAL	721	729	771	751	734

SPECIFIC AREAS OF CONCERN

INTERSTATE HIGHWAY FATALITIES

The Interstate Highway System of New Jersey is 100% completed, with 420.32 miles open to the motoring public. During 2004, the death rate averaged 4 deaths per month and 1 death for every 8.75 miles of highway. A concise analysis of victim classification, alcohol involvement, driver ages, contributing circumstances and manner of collision is outlined on the following page.

INTERSTATE HIGHWAY MILEAGE

Highway Number	Mileage Open	Fatal Accidents by Highway
I-76	3.04	0
I-78	67.83	9
I-80	68.35	18
I-95	86.73	1
I-195	34.17	1
I-278	2.00	0
I-280	17.85	3
I-287	67.54	6
I-295	68.06	9
I-676	4.75	1
TOTAL	420.32	48

INTERSTATE HIGHWAY FATALITIES

2004

Interstate Fatal Accidents: 48

Interstate Fatalities: 51

Victim Classification

Drivers	36
Passengers	11
Pedestrians	4
Pedalcyclists	0
TOTAL	51

Age of Drivers

16 & under	0
17	0
18 - 20	7
21 - 24	6
25 - 29	11
30 - 39	18
40 - 49	25
50 - 64	21
65 & over	6
Unknown	5
TOTAL	99

Contributing Circumstances

Drunken driving	6
Fell Asleep	2
Inattentive driving	20
Excessive speed	1
Driver under influence of Drugs	2
Stopped in roadway	1
Other	15
Mechanical failure	1
Pedestrian violation	2
No improper driving	45
Unknown	4
TOTAL	99

Manner of Collision

Head-on	4
Fixed object	9
Angle	9
Pedestrian	4
Rear end	10
Ran off roadway	4
Pedalcyclist	0
Same Direction-Other	1
Struck parked vehicle	1
Other	6
TOTAL	48

Victim Alcohol Factors

	.01% - .03%	.04% - .07%	.08% - .10%	.11% & over	Negative	No Test	TOTAL
Drivers	1	0	0	4	25	5	35
Passengers	1	0	1	2	7	0	11
Pedestrians	0	0	0	0	2	1	3
Pedalcyclists	0	0	0	0	0	0	0
TOTAL	2	0	1	6	34	6	49

NOTE: One driver victim and 1 pedestrian victim tested positive for drugs.

FATAL PEDALCYCLE ACCIDENTS

	2000	2001	2002	2003	2004
Pedalcycle Accidents	14	25	15	11	16
Fatalities	14	25	15	11	16

Manner of Collision

	'00	'01	'02	'03	'04
Angle	6	15	12	6	7
Same direction-rear end	4	6	0	3	3
Opposite direction-head on	2	0	1	1	3
Same direction - other	2	4	2	1	3
TOTAL	14	25	15	11	16

Classification of Victim

	2000	2001	2002	2003	2004
Drivers	14	25	15	11	16
Passengers	0	0	0	0	0
TOTAL	14	25	15	11	16

Contributing Circumstances

	'00	'01	'02	'03	'04
No improper driving	2	2	3	2	1
Ability impaired by drinking	4	6	2	0	3
Inattentive driving	1	1	2	1	3
Improper lights	0	0	0	1	0
On wrong side of road	0	0	0	1	0
Did not have right-of-way	1	5	0	4	1
Disregarded traffic light	0	3	0	0	2
Failure to keep right	2	3	2	1	2
Disregarded stop sign	0	0	1	0	1
Too fast for conditions	0	0	0	0	0
Improper turns	0	1	0	0	0
Other	4	4	4	0	2
Unknown	0	0	1	1	1
TOTAL	14	25	15	11	16

Age of Victim

	2000	2001	2002	2003	2004
0 - 3	0	0	0	0	0
4 - 10	2	1	0	1	0
11 - 15	0	6	3	3	2
16 - 20	0	3	2	0	1
21 - 30	3	3	1	1	0
31 - 40	6	5	5	0	4
41 - 50	2	4	2	2	1
51 - 60	0	2	0	2	3
61 & over	1	1	2	0	5
Unknown	0	0	0	2	0
TOTAL	14	25	15	11	16

ALCOHOL INVOLVEMENT

Of the 16 pedalcyclist fatalities, 14 were tested. Of those 14 tested, 3 tested positive for alcohol and 1 tested positive for drugs. Nine were negative for alcohol and / or drugs and 2 were not tested. One pedalcyclist was listed as "Had Been Drinking".

FATAL MOTORCYCLE ACCIDENTS

	2000	2001	2002	2003	2004
Accidents	54	71	53	56	72
Fatalities	58	73	54	58	76*

* One Motor Vehicle Driver and 1 Pedalcyclist were killed.

Age of drivers	2000	2001	2002	2003	2004
16 & under	1	1	1	2	1
17 - 20	2	7	5	7	4
21 - 30	26	34	12	16	26
31 - 40	13	18	16	14	22
Over 40	13	12	19	18	21
TOTAL	55	72	53	57	74

Victim Classification	'00	'01	'02	'03	'04
Drivers	51	68	49	54	69
Passengers	5	5	2	4	5
TOTAL	56	73	51	58	74

Manner of Collision	'00	'01	'02	'03	'04
Opposite direction - head on	6	3	2	6	8
Fixed object	20	22	17	15	18
Angle	14	32	14	19	14
Opposite direction - left turn	3	2	4	2	5
Opposite direction - other	0	0	0	0	6
Sideswipe	0	0	1	1	0
Pedestrian	2	0	1	0	0
Fell from vehicle	3	1	1	0	2
Same direction - rear end	1	5	4	8	7
Ran off roadway	0	1	1	0	3
Pedalcyclist	0	0	0	0	1
Overtaken in road	0	2	5	2	3
Struck parked vehicle	3	2	1	2	3
Other	2	1	2	1	2
TOTAL	54	71	53	56	72

Contributing Circumstances	'00	'01	'02	'03	'04
No improper driving	3	21	11	13	14
Drunken driving	15	17	13	15	16
Under influence of drugs	2	3	1	0	5
Failure to keep right	1	0	0	3	2
Improper left turn	0	0	0	1	1
Inattentive driving	6	12	6	7	17
Improper passing	1	3	1	0	1
Excessive speed	7	8	11	7	9
Didn't have right-of-way	1	1	0	1	2
Improper parking	0	0	0	0	0
Mechanical failure	0	0	0	1	0
Unknown	3	2	2	0	0
Disregard of traffic signal	1	0	0	1	1
Disregarded stop sign	0	1	1	1	0
Other	15	5	7	7	6
TOTAL	55	73	53	57	74

Victim Alcohol Factors

	.01% - .03%	.04% - .07%	.08% - .10%	.11% & over	Negative	No test	TOTAL
Drivers	4	2	2	14	34	7	63
Passengers	0	0	0	2	2	1	5
TOTAL	4	2	2	16	36	8	68

*Five deceased motorcycle drivers tested positive for drugs and one was listed as "Had Been Drinking."

FATAL TRACTOR-TRAILER ACCIDENTS

	2000	2001	2002	2003	2004
Accidents	42	34	39	48	41
Fatalities	51	36	46	53	43

Manner of Collision	'00	'01	'02	'03	'04
Head on	9	3	5	6	3
Fixed object	2	5	2	1	2
Other object	0	1	0	0	0
Angle	11	7	6	13	11
Pedestrian	5	4	6	8	6
Rear end	11	10	13	15	13
Ran off roadway	0	0	0	0	0
Pedalcyclist	0	1	1	0	0
Opposite Direction - other	0	0	0	0	1
Struck parked vehicle	3	1	3	1	1
Overtuned in roadway	0	0	0	1	2
Railroad train	0	0	0	0	0
Sideswipe	1	1	1	1	2
Left turn	0	0	0	0	0
Other	0	1	2	2	0
TOTAL	42	34	39	48	41

Tractor-Trailer	'00	'01	'02	'03	'04
Drunken driving	1	0	0	0	0
Fell asleep	1	0	0	0	0
Inattentive driving	6	9	5	10	4
Excessive speed	2	1	0	2	3
Driver under influence of drugs	0	1	1	0	2
Stopped in roadway	0	0	0	0	0
Other	0	4	3	3	2
Mechanical failure	1	1	2	0	1
Disregarding traffic light	0	0	0	1	1
Failure to keep right	0	0	0	0	0
Improper parking	0	0	0	0	0
On wrong side of road	0	0	0	0	0
Following too closely	0	0	1	0	0
No improper driving	32	21	30	40	31
Unknown	1	0	0	3	0
Failed to yield	0	0	0	0	0
Disregarding stop sign	1	0	0	0	0
Improper turn	0	0	2	1	1
Backing in roadway	1	0	0	0	0
TOTAL	46	37	44	60	45

Victim Classification	'00	'01	'02	'03	'04
Drivers	3	7	5	7	6
Passengers	0	0	1	1	0
TOTAL	3	7	6	8	6

Other Victim Classifications	'00	'01	'02	'03	'04
Drivers	31	17	22	27	21
Passengers	12	7	10	10	10
Pedestrians	5	4	7	8	6
Pedalcyclists	0	1	1	0	0
TOTAL	48	29	40	45	37

Other Involved Vehicle Contributing Circumstances	'00	'01	'02	'03	'04
Drunken driving	10	6	7	5	3
Fell asleep	0	0	0	0	1
Inattentive driving	7	6	7	4	9
Excessive speed	1	1	1	3	2
Driver under influence of drugs	0	1	4	2	1
Stopped in roadway	0	0	1	1	0
Other	2	0	3	14	4
Mechanical failure	0	0	1	0	1
Pedestrian violation	2	1	4	5	5
Disregarding traffic light	1	1	0	2	0
Failure to keep right	2	0	0	3	0
Improper parking	0	0	0	2	0
On wrong side of road	4	0	1	2	1
Passing on right	1	0	0	0	0
No improper driving	12	23	22	21	40
No pedestrian violation	2	2	3	3	1
Unknown	2	2	1	0	0
Failed to yield	0	1	1	3	1
Disregarding stop sign	0	0	0	1	1
Improper turn	0	0	1	1	0
Cutting in	0	0	0	0	0
TOTAL	46	44	57	72	70

TRACTOR-TRAILER VICTIM ALCOHOL FACTORS

	VICTIM ALCOHOL FACTORS						
	.01% - .03%	.04% - .07%	.08% - .10%	.11% & over	Negative	No test	TOTAL
Drivers	0	0	0	0	5	0	5
Passengers	0	0	0	0	0	0	0
TOTAL	0	0	0	0	5	0	5

1 driver tested positive for drugs.

OTHER VICTIM ALCOHOL FACTORS

	VICTIM ALCOHOL FACTORS						
	.01% - .03%	.04% - .07%	.08% - .10%	.11% & over	Negative	No test	TOTAL
Drivers	0	0	0	2	14	3	19
Passengers	0	0	0	0	8	1	9
Pedestrians	0	0	0	1	2	1	4
Pedalcyclists	0	0	0	0	0	0	0
TOTAL	0	0	0	3	24	5	32

1 driver, 2 passengers and 2 pedestrians tested positive for drugs.

RESTRAINT USAGE

Restraint used	Driver survived	Driver killed	Passenger killed
Lap belt	9	2	2
Shoulder belt	3	2	2
Lap & shoulder belt	379	86	26
Airbag deployed / No seat belt	18	66	6
Seat belt used / Airbag deployed	150	89	20
Child safety seat	0	0	2
No restraint used	42	91	49
Unknown	35	14	6
Not required	33	71	8
Total	669	421	121

Based on the various sources of information (accident reports, observations, interviews, evidence), the seat belt data may not be completely reliable.

“Not Required” includes commercial vehicles, motorcycles, parked vehicles, and rear seat passengers where no restraint is required.

17 - 20 AGE GROUP

Listed below are the 17 to 20-year-old drivers involved in fatal motor vehicle accidents.

Year	Total fatal accidents 17 - 20 drivers	Total drivers involved	Number of drivers drunk*
2004	100	103	18

* .08% & over

2004	17 years old	18 years old	19 years old	20 years old
Total drivers involved	13	32	30	25
Number of drivers drunk	1	4	7	6

FATAL ACCIDENTS WITH ALCOHOL INVOLVED

2004	17 years old	18 years old	19 years old	20 years old
Accidents	2	5	9	7

VICTIM CLASSIFICATION

2004	17 years old	18 years old	19 years old	20 years old
Drivers	6	15	13	12
Passengers	4	6	9	1

FATAL ACCIDENTS AND PERSONS KILLED FOR SELECTED HOLIDAY PERIODS IN NEW JERSEY

Holiday			Fatal accidents	Persons killed
Memorial Day*				
	2000	(4)	96 Hours	7
	2001	(4)	96 Hours	9
	2002	(4)	96 Hours	8
	2003	(4)	96 Hours	7
	2004	(4)	96 Hours	12
Fourth of July*				
	2000	(5)	120 Hours	15
	2001	(2)	48 Hours	4
	2002	(2)	48 Hours	5
	2003	(4)	96 Hours	5
	2004	(5)	120 Hours	20
Labor Day*				
	2000	(4)	96 Hours	7
	2001	(4)	96 Hours	7
	2002	(4)	96 Hours	8
	2003	(4)	96 Hours	9
	2004	(4)	96 Hours	13
Thanksgiving*				
	2000	(5)	120 Hours	17
	2001	(5)	120 Hours	11
	2002	(5)	120 Hours	5
	2003	(5)	120 Hours	9
	2004	(5)	120 Hours	9
Christmas				
	2000	(4)	96 Hours	8
	2001	(4)	96 Hours	16
	2002	(4)	96 Hours	3
	2003	(4)	96 Hours	6
	2004	(4)	96 Hours	16
New Year's				
	2000-01	(4)	96 Hours	3
	2001-02	(4)	96 Hours	14
	2002-03	(4)	96 Hours	10
	2003-04	(2)	48 Hours	2
	2004-05	(4)	96 Hours	6

Figures in parentheses show number of full days in each holiday period. An (*) denotes C.A.R.E. designated holidays.

TEN YEAR EXPERIENCE

Years	Fatal Accidents	Fatalities	Drivers	Passengers	Pedestrians	Pedalcyclists	Motorcycles*	Mopeds*	Alcohol Involvement
1995	719	773	435	154	162	22	38	0	31.9%
1996	754	809	443	172	176	18	51	0	30.4%
1997	699	774	405	203	145	21	44	0	30.8%
1998	671	741	403	163	156	19	38	0	27.4%
1999	664	725	384	164	153	24	40	1	32.0%
2000	655	723	415	151	144	13	55	0	36.1%
2001	677	740	417	168	130	25	72	0	31.0%
2002	699	771	419	161	176	15	53	0	33.4%
2003	666	735	416	171	137	11	58	0	32.5%
2004	684	732	425	131	151	16	74	0	31.9%
TOTAL	6,888	7,523	4,162	1,638	1,530	184	523	1	31.7%

*Included in "Driver Totals"—If passenger, included in "Passenger Totals."

NJSP FATAL ACCIDENT INVESTIGATIONS SUMMARY BY TROOP

LEGEND

CR County Road
 SH State Highway
 MP Milepost

TROOP A

Date	Time	Station	Road	MP	Municipality	County	Contributing Circumstances
01/13/2004	0655	BELLMAWR	I-295	25.2	WESTVILLE BORO	GLOUCESTER	DRUG USE
01/24/2004	0323	BELLMAWR	I-295	35.1	CHERRY HILL TWP	CAMDEN	DRUNK DRIVING
02/05/2004	0306	WOODBINE	SH 83	3.3	DENNIS TWP	CAPE MAY	NONE
02/29/2004	1702	TUCKERTON	CR 563	0.0	WASHINGTON TWP	BURLINGTON	DRIVER INATTENTION
03/17/2004	1009	BRIDGETON	SH 56	3.3	DEERFIELD TWP	CUMBERLAND	DISREGARD TRAFFIC SIGNAL
03/21/2004	1803	BUENA VISTA	MAIN AVE	0.0	BUENA VISTA TWP	ATLANTIC	DRUNK DRIVING
03/21/2004	1040	WOODSTOWN	CR 644	0.0	OLDSMAN TWP	SALEM	DISREGARD TRAFFIC SIGNAL
03/25/2004	1448	WOODSTOWN	CR 611	0.0	UPPER PITTSBORO TWP	SALEM	DISREGARD OF STOP SIGN
04/01/2004	0320	PORT NORRIS	SH 47	32.2	MAURICE RIVER TWP	CUMBERLAND	DRUNK DRIVING
04/02/2004	0739	BRIDGETON	SH 77	6.0	UPPER DEERFIELD TWP	CUMBERLAND	ON WRONG SIDE OF ROAD
04/13/2004	1508	WOODSTOWN	CR 581	0.0	ALLOWAY TWP	SALEM	DRIVER INATTENTION
05/01/2004	1721	BELLMAWR	SH 55	53.0	MANTUA TWP	GLOUCESTER	DRIVER INATTENTION
05/06/2004	2136	PORT NORRIS	SH 55	31.6	VINELAND CITY	CUMBERLAND	DRIVER INATTENTION
05/15/2004	1900	A.C.E.	EXPRESSWAY	40.8	WINSLOW TWP	CAMDEN	DRIVER INATTENTION
05/21/2004	0447	A.C.E.	EXPRESSWAY	27.3	HAMMONTON TOWN	ATLANTIC	DRIVER INATTENTION
05/27/2004	0328	BUENA VISTA	CR 637	0.0	ESTELL MANOR CITY	ATLANTIC	DRUNK DRIVING
05/31/2004	0025	WOODSTOWN	CR 67	1 0.0	UPPER PITTSBORO TWP	SALEM	DRIVER INATTENTION
06/11/2004	2137	PORT NORRIS	CR 692	0.0	FAIRFIELD TWP	CUMBERLAND	DRUNK DRIVING
06/14/2004	0238	BUENA VISTA	CR 561	0.0	FOLSOM BORO	ATLANTIC	DRIVER INATTENTION
06/27/2004	1411	WOODSTOWN	SH 45	15.6	HARRISON TWP	GLOUCESTER	DISREGARD OF STOP SIGN
07/05/2004	2146	A.C.E.	EXPRESSWAY	28.2	HAMMONTON TOWN	ATLANTIC	DRIVER INATTENTION
07/09/2004	1331	WOODSTOWN	CR 540	0.0	MANNINGTON TWP	SALEM	IMPROPER TURN
07/11/2004	1846	PORT NORRIS	SH 47	34.8	MAURICE RIVER TWP	CUMBERLAND	DRIVER INATTENTION
08/24/2004	1016	BRIDGETON	US 40	23.6	PITTSBORO TWP	SALEM	DRIVER INATTENTION
08/25/2004	0326	WOODSTOWN	I-295	6.2	OLDSMAN TWP	SALEM	DRUNK DRIVING
08/31/2004	1748	BRIDGETON	CR 553	0.0	UPPER DEERFIELD TWP	CUMBERLAND	ON WRONG SIDE OF ROAD
09/05/2004	1721	BELLMAWR	SH 42	11.6	DEPTFORD TWP	GLOUCESTER	DRIVER INATTENTION
09/11/2004	0040	BUENA VISTA	CR 669	0.0	WEYMOUTH TWP	ATLANTIC	DRUNK DRIVING
09/17/2004	0123	BELLMAWR	I-295	27.7	BELLMAWR BORO	CAMDEN	DRUNK DRIVING
09/17/2004	1547	A.C.E.	EXPRESSWAY	39.0	WINSLOW TWP	CAMDEN	DRUNK DRIVING
09/18/2004	1432	BRIDGETON	CR 553	0.0	UPPER DEERFIELD TWP	CUMBERLAND	DISREGARD OF STOP SIGN
09/22/2004	2037	WOODSTOWN	SH 45	3.3	MANNINGTON TWP	SALEM	DISREGARD OF STOP SIGN
09/25/2004	1359	WOODBINE	SH 47	19.3	DENNIS TWP	CAPE MAY	DRUNK DRIVING
09/26/2004	2150	A.C.E.	EXPRESSWAY	1.6	ATLANTIC CITY	ATLANTIC	DRIVER INATTENTION
10/10/2004	0105	WOODSTOWN	CR 540	0.0	MANNINGTON TWP	SALEM	EXCESSIVE SPEED
11/01/2004	1448	BELLMAWR	I-676	2.8	CAMDEN CITY	CAMDEN	UNKNOWN
11/15/2004	1159	WOODSTOWN	US 40	20.5	UPPER PITTSBORO TWP	SALEM	ON WRONG SIDE OF ROAD
11/28/2004	1307	WOODSTOWN	US 40	8.2	PILESBORO TWP	SALEM	FAIL TO KEEP RIGHT
12/17/2004	0732	WOODSTOWN	I-295	8.2	OLDSMAN TWP	SALEM	DRIVER INATTENTION
12/21/2004	0212	BELLMAWR	SH 42	6.7	GLOUCESTER CITY	CAMDEN	DRUG USE
12/24/2004	0007	WOODSTOWN	WATERWORKS RD	0.0	QUINTON TWP	SALEM	DRUNK DRIVING
12/26/2004	1348	WOODSTOWN	CR 657	0.0	ALLOWAY TWP	SALEM	DRIVER INATTENTION
12/31/2004	1816	BELLMAWR	I-295	24.5	WEST DEPTFORD TWP	GLOUCESTER	DRIVER INATTENTION

TROOP B

Date	Time	Station	Road	MP	Municipality	County	Contributing Circumstances
01/03/2004	1640	HOPE	I-80	9.1	KNOWLTON TWP	WARREN	DRIVER INATTENTION
01/06/2004	1711	WASHINGTON	CR 643	0.0	FRANKLIN TWP	WARREN	PEDESTRIAN VIOLATION
01/08/2004	0107	SUSSEX	US 206	121.5	SANDYSTON TWP	SUSSEX	TOO FAST FOR CONDITIONS
01/09/2004	1540	SUSSEX	PLAINS RD	0.0	FRANKFORD TWP	SUSSEX	ON WRONG SIDE OF ROAD
01/11/2004	0058	SOMERVILLE	I-287	26.5	BERNARDS TWP	SOMERSET	EXCESSIVE SPEED

Date	Time	Station	Road	MP	Municipality	County	Contributing Circumstances
01/23/2004	2304	PERRYVILLE	I-78	21.5	CLINTON TWP	HUNTERDON	DRUG USE
01/24/2004	0240	SUSSEX	CR 519	0.0	FRANKFORD TWP	SUSSEX	DRUNK DRIVING
02/10/2004	2005	PERRYVILLE	US 22	21.6	LEBANON BORO	HUNTERDON	PEDESTRIAN VIOLATION
02/18/2004	1700	SUSSEX	US 206	110.7	HAMPTON TWP	SUSSEX	PEDESTRIAN VIOLATION
02/24/2004	1657	TOTOWA	I-280	1.5	PARSIPPANY-TROY HILL	MORRIS	TOO FAST FOR CONDITIONS
02/28/2004	1647	SUSSEX	CR 626	0.0	HAMPTON TWP	SUSSEX	DRIVER INATTENTION
02/29/2004	1344	HOPE	I-80	11.5	HOPE TWP	WARREN	DRIVER INATTENTION
03/17/2004	0054	NETCONG	I-287	44.2	PARSIPPANY-TROY HILL	MORRIS	TOO FAST FOR CONDITIONS
04/04/2004	1012	HOPE	CR 521	0.0	HARDWICK TWP	WARREN	ON WRONG SIDE OF ROAD
04/05/2004	1943	NETCONG	I-287	46.1	MONTVILLE TWP	MORRIS	PASSING ON THE RIGHT
04/11/2004	1404	SOMERVILLE	I-78	35.5	WARREN TWP	SOMERSET	DRIVER INATTENTION
04/14/2004	2240	HOPE	CR 519	0.0	HOPE TWP	WARREN	TOO FAST FOR CONDITIONS
04/18/2004	0001	SOMERVILLE	I-78	56.8	NEWARK CITY	ESSEX	DRUG USE
05/01/2004	0423	PERRYVILLE	I-78	25.7	READINGTON TWP	HUNTERDON	DRIVER FELL ASLEEP
05/04/2004	0516	TOTOWA	I-280	6.6	WEST ORANGE TOWN	ESSEX	OTHER
05/08/2004	1711	SUSSEX	WALNUT ST	0.0	SUSSEX BORO	SUSSEX	OTHER
05/19/2004	0902	SOMERVILLE	SH 24	8.0	MILLBURN TWP	ESSEX	DRIVER INATTENTION
05/25/2004	2304	TOTOWA	I-80	44.9	PARSIPPANY-TROY HILL	MORRIS	UNKNOWN
05/26/2004	0124	NETCONG	I-80	40.3	PARSIPPANY-TROY HILL	MORRIS	UNKNOWN
06/11/2004	0019	TOTOWA	I-280	0.1	PARSIPPANY-TROY HILL	MORRIS	DRUNK DRIVING
06/19/2004	1136	SOMERVILLE	I-78	57.2	NEWARK CITY	ESSEX	DRUG USE
06/21/2004	1642	TOTOWA	I-280	16.2	KEARNY TOWN	HUDSON	DRIVER INATTENTION
06/28/2004	1419	WASHINGTON	CR 519	0.0	WHITE TWP	WARREN	DRUG USE
07/03/2004	1114	TOTOWA	I-287	66.0	MAHWAH TWP	BERGEN	DRIVER INATTENTION
07/05/2004	0557	SOMERVILLE	SH 24	10.2	SPRINGFIELD TWP	UNION	OTHER
07/10/2004	1729	SUSSEX	CR 521	0.0	HAMPTON TWP	SUSSEX	DRUNK DRIVING
07/12/2004	1011	SOMERVILLE	I-287	13.8	BRIDGEWATER TWP	SOMERSET	DRIVER INATTENTION
07/18/2004	1706	NETCONG	I-80	28.4	ROXBURY TWP	MORRIS	DRUNK DRIVING
07/22/2004	2106	SUSSEX	SH 15	19.4	FRANKFORD TWP	SUSSEX	ON WRONG SIDE OF ROAD
07/29/2004	1201	SOMERVILLE	I-78	54.0	HILLSIDE TWP	UNION	OTHER
07/30/2004	1425	WASHINGTON	FREE UNION RD	0.0	LIBERTY TWP	WARREN	DRUG USE
08/01/2004	1833	WASHINGTON	US 46	6.5	WHITE TWP	WARREN	ON WRONG SIDE OF ROAD
08/01/2004	0321	TOTOWA	I-80	67.5	TEANECK TWP	BERGEN	PEDESTRIAN VIOLATION
08/13/2004	0542	PERRYVILLE	I-78	13.7	UNION TWP	HUNTERDON	TOO FAST FOR CONDITIONS
08/13/2004	0501	HOPE	I-80	1.0	HARDWICK TWP	WARREN	OTHER
08/21/2004	1557	SUSSEX	CR 653	0.0	MONTAGUE TWP	SUSSEX	DRUNK DRIVING
08/24/2004	1726	SOMERVILLE	I-78	31.7	BRIDGEWATER TWP	SOMERSET	DRIVER INATTENTION
08/26/2004	0411	NETCONG	I-80	27.4	ROXBURY TWP	MORRIS	DRIVER INATTENTION
08/28/2004	1508	SUSSEX	US 206	127.8	SANDYSTON TWP	SUSSEX	ON WRONG SIDE OF ROAD
09/09/2004	0905	SUSSEX	US 206	113.8	FRANKFORD TWP	SUSSEX	ON WRONG SIDE OF ROAD
09/11/2004	0608	PERRYVILLE	I-78	25.8	READINGTON TWP	HUNTERDON	DRIVER INATTENTION
09/17/2004	2349	TOTOWA	I-80	63.9	LODI BORO	BERGEN	DRIVER INATTENTION
09/22/2004	2101	SOMERVILLE	SH 440	3.6	PERTH AMBOY CITY	MIDDLESEX	DRIVER INATTENTION
09/26/2004	1752	SOMERVILLE	SH 24	10.2	SPRINGFIELD TWP	UNION	DRIVER INATTENTION
10/09/2004	2232	TOTOWA	I-80	44.7	PARSIPPANY-TROY HILL	MORRIS	DRINKING DRIVER
10/13/2004	1152	SUSSEX	CR 517	0.0	GREEN TWP	SUSSEX	FAIL TO YIELD
10/14/2004	0217	TOTOWA	I-80	52.3	FAIRFIELD TWP	ESSEX	DRUG USE
10/15/2004	2134	TOTOWA	I-80	49.1	FAIRFIELD TWP	ESSEX	DRIVER INATTENTION
10/21/2004	1550	PERRYVILLE	I-78	16.6	CLINTON TWP	HUNTERDON	DRIVER INATTENTION
10/22/2004	0700	SOMERVILLE	I-78	46.6	SUMMIT CITY	UNION	DRIVER INATTENTION
10/23/2004	1931	NETCONG	I-80	36.7	ROCKAWAY TWP	MORRIS	IMPROPER TURN
10/30/2004	1740	SUSSEX	SH 15	16.5	LAFAYETTE TWP	SUSSEX	DRUNK DRIVING
11/10/2004	0435	NETCONG	I-80	32.6	ROXBURY TWP	MORRIS	DRIVER INATTENTION
11/10/2004	1957	SUSSEX	US 206	123.0	SANDYSTON TWP	SUSSEX	DRUG USE
11/12/2004	1207	NETCONG	I-80	32.7	ROCKAWAY TWP	MORRIS	TOO FAST FOR CONDITIONS
11/28/2004	1141	NETCONG	I-80	33.5	WHARTON BORO	MORRIS	DRIVER INATTENTION
11/28/2004	2100	NETCONG	I-80	42.0	PARSIPPANY-TROY HILL	MORRIS	DRIVER FELL ASLEEP
12/09/2004	0306	HOPE	I-80	21.5	ALLAMUCHY TWP	WARREN	DRIVER INATTENTION
12/13/2004	1750	HOPE	I-80	7.6	KNOWLTON TWP	WARREN	MECHANICAL FAILURE
12/16/2004	0619	NETCONG	I-287	52.5	PEQUANNOCK TWP	MORRIS	DRIVER INATTENTION

TROOP C

Date	Time	Station	Road	MP	Municipality	County	Contributing Circumstances
01/11/2004	1429	BORDENTOWN	BURRS RD	0.0	SPRINGFIELD TWP	BURLINGTON	DRIVER INATTENTION
03/01/2004	1849	BORDENTOWN	US 130	51.9	MANSFIELD TWP	BURLINGTON	DRUNK DRIVING
03/08/2004	0314	BORDENTOWN	CR 670	0.0	WRIGHTSTOWN BORO	BURLINGTON	DRUNK DRIVING
03/09/2004	0715	BORDENTOWN	I-295	44.8	WESTAMPTON TWP	BURLINGTON	DRIVER INATTENTION
04/22/2004	1328	HAMILTON	I-295	60.2	HAMILTON TWP	MERCER	TOO FAST FOR CONDITIONS
04/24/2004	1018	HAMILTON	CR 526	0.0	UPPER FREEHOLD TWP	MONMOUTH	DISREGARD OF STOP SIGN
05/08/2004	1637	RED LION	SH 70	21.7	SOUTHAMPTON TWP	BURLINGTON	DID NOT HAVE RIGHT OF WAY
05/09/2004	2149	HAMILTON	I-95	4.2	HOPEWELL TWP	MERCER	STOPPED IN ROADWAY
05/12/2004	1545	RED LION	CR 530	0.0	SOUTHAMPTON TWP	BURLINGTON	FOLLOWING TOO CLOSELY
06/02/2004	1900	BORDENTOWN	PETTICOAT RD	0.0	SPRINGFIELD TWP	BURLINGTON	DRIVER INATTENTION
06/11/2004	1429	BORDENTOWN	CR 537	0.0	SPRINGFIELD TWP	BURLINGTON	DRIVER INATTENTION
07/06/2004	1322	HAMILTON	SH 33	0.0	MILLSTONE TWP	MONMOUTH	DRIVER INATTENTION
07/10/2004	1743	HAMILTON	CR 571	0.0	ROOSEVELT BORO	MONMOUTH	DRIVER INATTENTION
07/23/2004	1332	HAMILTON	MILLSTONE RD	0.0	MILLSTONE TWP	MONMOUTH	TOO FAST FOR CONDITIONS
07/24/2004	1759	BORDENTOWN	KINKORA RD	0.0	MANSFIELD TWP	BURLINGTON	DRUNK DRIVING
08/02/2004	0902	HAMILTON	I-195	1.3	HAMILTON TWP	MERCER	DRIVER INATTENTION
08/04/2004	1640	RED LION	SH 72	11.1	WOODLAND TWP	BURLINGTON	DRIVER INATTENTION
08/08/2004	1955	TUCKERTON	CR 563	0.0	WASHINGTON TWP	BURLINGTON	DRIVER INATTENTION
08/17/2004	1004	RED LION	SH 70	23.5	SOUTHAMPTON TWP	BURLINGTON	DRIVER INATTENTION
08/22/2004	0230	HAMILTON	CR 524	0.0	MILLSTONE TWP	MONMOUTH	DRUNK DRIVING
09/10/2004	1426	BORDENTOWN	CR 528	0.0	CHESTERFIELD TWP	BURLINGTON	DRIVER INATTENTION
10/05/2004	1802	TUCKERTON	CR 563	0.0	WASHINGTON TWP	BURLINGTON	DRUNK DRIVING
10/09/2004	0001	BORDENTOWN	GILBERT RD	0.0	SPRINGFIELD TWP	BURLINGTON	EXCESSIVE SPEED
10/17/2004	2224	KINGWOOD	SH29	29.8	KINGWOOD TWP	HUNTERDON	DRUNK DRIVING
10/24/2004	0100	RED LION	CR 54	10.0	SHAMONG TWP	BURLINGTON	DRUNK DRIVING
10/30/2004	1744	BORDENTOWN	CR 537	0.0	NORTH HANOVER TWP	BURLINGTON	DID NOT HAVE RIGHT OF WAY
12/23/2004	1927	BORDENTOWN	I-295	45.3	WESTAMPTON TWP	BURLINGTON	DRIVER INATTENTION

TROOP D

Date	Time	Station	Road	MP	Municipality	County	Contributing Circumstances
01/13/2004	0516	NEWARK	TURNPIKE	111.4	RUTHERFORD BORO	BERGEN	OTHER
01/27/2004	0848	MOORESTOWN	TURNPIKE	45.9	SPRINGFIELD TWP	BURLINGTON	TOO FAST FOR CONDITIONS
02/27/2004	1614	NEWARK	TURNPIKE	99.9	ELIZABETH CITY	UNION	OTHER
03/10/2004	1546	NEWARK	TURNPIKE	110.8	SECAUCUS TOWN	HUDSON	DRIVER INATTENTION
03/29/2004	1847	MOORESTOWN	TURNPIKE	45.5	BURLINGTON TWP	BURLINGTON	DRIVER INATTENTION
04/15/2004	2147	NEWARK	TURNPIKE	108.2	KEARNY TOWN	HUDSON	DRIVER INATTENTION
04/23/2004	2031	NEWARK	TURNPIKE	99.4	ELIZABETH CITY	UNION	PEDESTRIAN VIOLATION
05/01/2004	0040	CRANBURY	TURNPIKE	65.8	EAST WINDSOR TWP	MERCER	DRIVER INATTENTION
05/02/2004	2250	CRANBURY	TURNPIKE	80.7	MILLTOWN BORO	MIDDLESEX	DRUGS
05/23/2004	1748	NEWARK	TURNPIKE	115.4	RIDGEFIELD BORO	BERGEN	OTHER
06/04/2004	0037	MOORESTOWN	TURNPIKE	57.3	HAMILTON TWP	MERCER	DRUGS
06/06/2004	1918	CRANBURY	TURNPIKE	90.3	WOODBRIIDGE TWP	MIDDLESEX	DRUNK DRIVING
06/27/2004	1604	NEWARK	TURNPIKE	121.5	FORT LEE BORO	BERGEN	EXCESSIVE SPEED
07/11/2004	1007	MOORESTOWN	TURNPIKE	1.1	FLORENCE TWP	BURLINGTON	DRIVER INATTENTION
07/18/2004	0545	CRANBURY	TURNPIKE	83.3	EAST BRUNSWICK TWP	MIDDLESEX	DRIVER FELL ASLEEP
07/21/2004	1636	MOORESTOWN	TURNPIKE	18.2	GREENWICH TWP	GLOUCESTER	DRIVER INATTENTION
08/05/2004	0253	CRANBURY	TURNPIKE	81.9	EAST BRUNSWICK TWP	MIDDLESEX	DRIVER INATTENTION
08/15/2004	1735	CRANBURY	TURNPIKE	60.0	WASHINGTON TWP	MERCER	DRUNK DRIVING
08/20/2004	0815	CRANBURY	TURNPIKE	88.9	EDISON TWP	MIDDLESEX	TIRE BLEW OUT
08/31/2004	2034	NEWARK	TURNPIKE	119.4	TEANECK TWP	BERGEN	PEDESTRIAN VIOLATION
10/01/2004	1928	NEWARK	TURNPIKE	113.2	SECAUCUS TOWN	HUDSON	DRIVER INATTENTION
10/17/2004	0327	NEWARK	TURNPIKE HEW	0.2	NEWARK CITY	ESSEX	STOPPED IN ROADWAY
10/29/2004	0656	MOORESTOWN	TURNPIKE	56.0	CHESTERFIELD TWP	BURLINGTON	DRIVER INATTENTION
11/06/2004	2102	NEWARK	TURNPIKE	110.6	SECAUCUS TOWN	HUDSON	MECHANICAL FAILURE
11/17/2004	0558	MOORESTOWN	TURNPIKE	59.2	HAMILTON TWP	MERCER	IMPROPER PASSING

TROOP E

Date	Time	Station	Road	MP	Municipality	County	Contributing Circumstances
01/14/2004	1638	HOLMDEL	PARKWAY	110.0	MIDDLETOWN TWP	MONMOUTH	DRIVER FELL ASLEEP
01/24/2004	0627	BASS RIVER	PARKWAY	54.4	BASS RIVER TWP	BURLINGTON	DRIVER INATTENTION
01/25/2004	2050	HOLMDEL	PARKWAY	126.0	SAYREVILLE BORO	MIDDLESEX	DRUNK DRIVING
01/30/2004	0240	BLOOMFIELD	PARKWAY	138.9	CRANFORD TWP	UNION	PEDESTRIAN VIOLATION
02/04/2004	0018	BASS RIVER	PARKWAY	66.0	STAFFORD TWP	OCEAN	TOO FAST FOR CONDITIONS
02/05/2004	0713	BASS RIVER	PARKWAY	61.1	EAGLESWOOD TWP	OCEAN	DRIVER INATTENTION
02/05/2004	2328	BLOOMFIELD	PARKWAY	134.8	WOODBRIIDGE TWP	MIDDLESEX	DRUNK DRIVING
02/22/2004	2305	BASS RIVER	PARKWAY	35.9	EGG HARBOR TWP	ATLANTIC	UNKNOWN
03/07/2004	2110	BLOOMFIELD	PARKWAY	163.9	PARAMUS BORO	BERGEN	DRIVING TOO SLOW
03/14/2004	0148	BLOOMFIELD	PARKWAY	142.3	UNION TWP	UNION	PEDESTRIAN VIOLATION
03/15/2004	0003	HOLMDEL	PARKWAY	118.0	HAZLET TWP	MONMOUTH	DRUNK DRIVING
04/06/2004	2121	BASS RIVER	PARKWAY	80.6	SO TOMS RIVER BORO	OCEAN	IMPROPER LANE CHANGE
05/15/2004	0222	HOLMDEL	PARKWAY	130.0	WOODBRIIDGE TWP	MIDDLESEX	OTHER
06/03/2004	1822	BASS RIVER	PARKWAY	73.6	LACEY TWP	OCEAN	TIRE BLEW OUT
06/04/2004	1706	BASS RIVER	PARKWAY	87.0	DOVER TWP	OCEAN	UNKNOWN
06/11/2004	0229	BASS RIVER	PARKWAY	22.7	UPPER TWP	CAPE MAY	DRUNK DRIVING
06/11/2004	1133	HOLMDEL	PARKWAY	115.0	HOLMDEL TWP	MONMOUTH	UNKNOWN
06/19/2004	0023	BASS RIVER	PARKWAY	23.1	UPPER TWP	CAPE MAY	UNKNOWN
06/26/2004	0535	BASS RIVER	PARKWAY	56.2	LITTLE EGG HRBR TWP	OCEAN	DRUNK DRIVING
07/02/2004	0104	HOLMDEL	PARKWAY	95.4	WALL TWP	MONMOUTH	DRUNK DRIVING
07/03/2004	1018	BASS RIVER	PARKWAY	87.4	DOVER TWP	OCEAN	DRIVER INATTENTION
07/07/2004	2356	BLOOMFIELD	PARKWAY	139.2	CRANFORD TWP	UNION	PEDESTRIAN VIOLATION
07/10/2004	2135	BLOOMFIELD	PARKWAY	155.2	CLIFTON CITY	PASSAIC	DRIVER INATTENTION
08/14/2004	0927	BASS RIVER	PARKWAY	55.6	BASS RIVER TWP	BURLINGTON	DRUNK DRIVING
08/15/2004	1606	BASS RIVER	PARKWAY	86.0	DOVER TWP	OCEAN	OTHER VEHICLE'S ACTION
08/20/2004	2219	HOLMDEL	PARKWAY	101.0	TINTON FALLS BORO	MONMOUTH	DRUNK DRIVING
08/29/2004	0446	BASS RIVER	PARKWAY	60.9	EAGLESWOOD TWP	OCEAN	DRIVER INATTENTION
09/01/2004	0038	BASS RIVER	PARKWAY	81.6	DOVER TWP	OCEAN	DRUNK DRIVING
09/05/2004	0815	BASS RIVER	PARKWAY	65.5	STAFFORD TWP	OCEAN	DRIVER INATTENTION
09/18/2004	0526	BASS RIVER	PARKWAY	87.4	DOVER TWP	OCEAN	DRIVER INATTENTION
09/26/2004	1828	HOLMDEL	PARKWAY	108.0	TINTON FALLS BORO	MONMOUTH	DRUNK DRIVING
10/14/2004	0832	BASS RIVER	PARKWAY	42.9	GALLOWAY TWP	ATLANTIC	DRIVER INATTENTION
11/04/2004	2216	BASS RIVER	PARKWAY	9.9	MIDDLE TWP	CAPE MAY	DISREGARD TRAFFIC SIGNAL
11/10/2004	2048	BLOOMFIELD	PARKWAY	143.5	IRVINGTON TOWN	ESSEX	DRIVER INATTENTION
11/28/2004	0053	BASS RIVER	PARKWAY	47.0	PORT REPUBLIC CITY	ATLANTIC	TOO FAST FOR CONDITIONS
12/11/2004	0417	BASS RIVER	PARKWAY	83.5	DOVER TWP	OCEAN	DRIVER INATTENTION
12/19/2004	0640	BASS RIVER	PARKWAY	51.8	BASS RIVER TWP	BURLINGTON	WEATHER
12/19/2004	0818	HOLMDEL	PARKWAY	121.0	OLD BRIDGE TWP	MIDDLESEX	DRIVER INATTENTION
12/20/2004	2021	BASS RIVER	PARKWAY	83.7	DOVER TWP	OCEAN	DRUNK DRIVING
12/24/2004	1302	BASS RIVER	PARKWAY	74.9	LACEY TWP	OCEAN	DRIVER INATTENTION
12/29/2004	1252	BASS RIVER	PARKWAY	46.5	PORT REPUBLIC CITY	ATLANTIC	IMPROPER TURN

FATAL ACCIDENTS BY COUNTY, MUNICIPALITY, DATE, TIME AND LOCATION

LEGEND

EXPRESSWAY ATLANTIC CITY EXPRESSWAY
 CR COUNTY ROAD
 PARKWAY GARDEN STATE PARKWAY
 PIP PALISADES INTERSTATE PARKWAY

TURNPIKE NEW JERSEY TURNPIKE
 MP MILEPOST
 SH STATE HIGHWAY

ATLANTIC COUNTY						
MUNICIPALITY	DATE	DAY	TIME	ROADWAY	MP	PERSONS KILLED
HAMILTON TWP	01/08/2004	THURSDAY	2355	OLD LANDIS AVE	0.0	1 DRIVER
EGG HARBOR CITY	01/19/2004	MONDAY	1430	US 30	41.1	1 DRIVER
HAMILTON TWP	02/07/2004	SATURDAY	0443	US 322	46.8	1 DRIVER
EGG HARBOR TWP	02/22/2004	SUNDAY	2305	PARKWAY	35.9	1 DRIVER
HAMILTON TWP	03/07/2004	SUNDAY	1840	CR 559	0.0	1 DRIVER
HAMILTON TWP	03/08/2004	MONDAY	2125	US 322	46.8	1 PEDESTRIAN
BUENA VISTA TWP	03/21/2004	SUNDAY	1803	MAIN AVE	0.0	1 DRIVER
EGG HARBOR TWP	04/24/2004	SATURDAY	1419	WEST JERSEY AVE	0.0	1 DRIVER
ATLANTIC CITY	04/30/2004	FRIDAY	0531	ATLANTIC AVE	0.0	1 PEDESTRIAN
PLEASANTVILLE CITY	04/30/2004	FRIDAY	1656	CR 585	0.0	1 PEDESTRIAN
HAMILTON TWP	05/15/2004	SATURDAY	1721	CR 552	0.0	1 PASSENGER
HAMMONTON TOWN	05/21/2004	FRIDAY	0447	EXPRESSWAY	27.3	1 DRIVER
ESTELL MANOR CITY	05/27/2004	THURSDAY	0328	CR 637	0.0	1 DRIVER
GALLOWAY TWP	05/28/2004	FRIDAY	2307	CR 670	0.0	1 PASSENGER
FOLSOM BORO	06/14/2004	MONDAY	0238	CR 561	0.0	1 DRIVER
HAMMONTON TOWN	07/05/2004	MONDAY	2146	EXPRESSWAY	28.2	1 DRIVER
EGG HARBOR TWP	07/23/2004	FRIDAY	0242	US 322	55.5	2 PEDESTRIANS
ATLANTIC CITY	08/12/2004	THURSDAY	0011	US 40	63.6	1 PEDESTRIAN
EGG HARBOR TWP	08/20/2004	FRIDAY	2046	US 322	53.7	1 DRIVER
HAMMONTON TOWN	08/25/2004	WEDNESDAY	2340	8TH ST	0.0	1 DRIVER
MULLICA TWP	08/27/2004	FRIDAY	1248	US 30	34.7	1 PASSENGER
EGG HARBOR TWP	09/01/2004	WEDNESDAY	1255	US 40	53.5	1 PEDESTRIAN
WEYMOUTH TWP	09/11/2004	SATURDAY	0040	CR 669	0.0	1 DRIVER
HAMILTON TWP	09/11/2004	SATURDAY	0331	CR 559	0.0	1 DRIVER
ATLANTIC CITY	09/26/2004	SUNDAY	2150	EXPRESSWAY	1.6	1 DRIVER
HAMMONTON TOWN	10/07/2004	THURSDAY	1001	US 206	0.9	1 DRIVER
GALLOWAY TWP	10/14/2004	THURSDAY	0832	PARKWAY	42.9	1 DRIVER
BUENA BORO	10/18/2004	MONDAY	1611	CR 672	0.0	1 DRIVER, 1 PASSENGER
SOMERS POINT CITY	10/20/2004	WEDNESDAY	1854	SOUTHVIEW DRIVE	0.0	1 PEDESTRIAN
HAMILTON TWP	10/28/2004	THURSDAY	2205	US 322	49.8	1 PEDESTRIAN
ABSECON CITY	11/03/2004	WEDNESDAY	1247	CR 30	51.0	1 DRIVER
HAMILTON TWP	11/03/2004	WEDNESDAY	1900	US 322	41.2	1 PASSENGER
HAMILTON TWP	11/11/2004	THURSDAY	1716	US 40	52.4	1 PEDESTRIAN
LINWOOD CITY	11/16/2004	TUESDAY	2109	ROUTE 9	36.8	1 PEDESTRIAN
PORT REPUBLIC CITY	11/28/2004	SUNDAY	0053	PARKWAY	47.0	1 DRIVER
HAMILTON TWP	12/19/2004	SUNDAY	2241	CR 552	0.0	1 DRIVER
PORT REPUBLIC CITY	12/29/2004	WEDNESDAY	1252	PARKWAY	46.5	1 DRIVER

BERGEN COUNTY						
MUNICIPALITY	DATE	DAY	TIME	ROADWAY	MP	PERSONS KILLED
EAST RUTHERFORD BORO	01/03/2004	SATURDAY	1740	SH 120	0.8	1 DRIVER
RIDGEFIELD BORO	01/11/2004	SUNDAY	1643	BROAD AVE	0.0	1 DRIVER
RUTHERFORD BORO	01/13/2004	TUESDAY	0516	TURNPIKE	111.4	1 DRIVER
LODI BORO	01/18/2004	SUNDAY	0017	SH 17	0.0	1 DRIVER
RIDGEFIELD BORO	01/26/2004	MONDAY	0432	BROAD AVE	0.0	1 DRIVER
HACKENSACK CITY	01/31/2004	SATURDAY	1046	MAIN ST	0.0	1 PEDESTRIAN
MONTVALE BORO	02/04/2004	WEDNESDAY	0130	CHESTNUTRIDGE RD	0.0	1 DRIVER
TENAFLY BORO	02/12/2004	THURSDAY	1413	SH 9	5.3	1 DRIVER
WALDWICK BORO	02/18/2004	WEDNESDAY	1503	WYCKOFF AVE	0.0	1 DRIVER
ELMWOOD PARK BORO	02/20/2004	FRIDAY	0647	RIVER DR	0.0	1 DRIVER
PARAMUS BORO	03/07/2004	SUNDAY	2110	PARKWAY	163.9	1 DRIVER

PARAMUS BORO	03/09/2004	TUESDAY	1238	FOREST AVE	0.0	1 PASSENGER
UPR. SADDLE RVR BORO	03/11/2004	THURSDAY	1641	EAST SADDLE RIVER RD	0.0	1 DRIVER
FAIRLAWN BORO	03/26/2004	FRIDAY	0206	SH 4	2.1	1 PEDESTRIAN
HACKENSACK CITY	03/31/2004	WEDNESDAY	1855	ESSEX ST	0.0	1 PEDESTRIAN
RAMSEY BORO	04/18/2004	SUNDAY	1740	EAST CRESENT AVE	0.0	1 DRIVER
TEANECK TWP	05/19/2004	WEDNESDAY	2316	PALISADE AVE	0.0	1 PEDESTRIAN
RIDGEFIELD BORO	05/23/2004	SUNDAY	1748	TURNPIKE	115.4	1 PASSENGER
PARAMUS BORO	05/23/2004	SUNDAY	1413	SPRING VALLEY RD	0.0	1 DRIVER
ELMWOOD PARK BORO	06/01/2004	TUESDAY	2046	WART ST	0.0	1 DRIVER
WOOD-RIDGE BORO	06/02/2004	WEDNESDAY	1743	CR 38	0.0	1 DRIVER
MONTVALE BORO	06/06/2004	SUNDAY	1847	CR 02	0.0	1 PASSENGER
ALLENDALE BORO	06/25/2004	FRIDAY	0958	FOREST RD	0.0	1 BICYCLIST
FORT LEE BORO	06/27/2004	SUNDAY	1604	TURNPIKE	121.5	1 PASSENGER
MAHWAH TWP	07/03/2004	SATURDAY	1114	I-287	66.0	1 DRIVER
SADDLE BROOK TWP	07/10/2004	SATURDAY	0336	US 46	65.6	1 PEDESTRIAN
HACKENSACK CITY	07/10/2004	SATURDAY	1036	RIVER ST	0.0	1 DRIVER
WALDWICK BORO	07/15/2004	THURSDAY	1623	SHERIDAN AVE	0.0	1 BICYCLIST
PALISADES PARK BORO	07/17/2004	SATURDAY	2335	US 1 & 9	0.0	1 PEDESTRIAN
PARAMUS BORO	07/26/2004	MONDAY	1500	FOREST AVE	0.0	1 PASSENGER
TEANECK TWP	08/01/2004	SUNDAY	0321	I-80	67.5	1 PEDESTRIAN
TEANECK TWP	08/31/2004	TUESDAY	2034	TURNPIKE	119.4	1 PEDESTRIAN
HASBROUCK HGHTS BOR	09/03/2004	FRIDAY	1200	BOULEVARD	0.0	1 PEDESTRIAN
LODI BORO	09/17/2004	FRIDAY	2349	I-80	63.9	1 PEDESTRIAN
RIDGEWOOD TWP	09/23/2004	THURSDAY	0026	GROVE ST	0.0	1 DRIVER
HOHOKUS BORO	09/24/2004	FRIDAY	0712	EAST SADDLE RIVER RD	0.0	1 PASSENGER
SADDLE BROOK TWP	09/24/2004	FRIDAY	1234	MARKET STREET	0.0	1 PASSENGER
HACKENSACK CITY	10/15/2004	FRIDAY	2042	ATLANTIC ST	0.0	1 PEDESTRIAN
RIDGEFIELD PARK TWP	10/20/2004	WEDNESDAY	1936	US 46	0.0	1 PEDESTRIAN
WYCKOFF TWP	11/02/2004	TUESDAY	1620	SH 20	8 6.4	1 DRIVER
MIDLAND PARK BORO	11/05/2004	FRIDAY	1140	MALTBIE AVE	0.0	1 DRIVER
MAHWAH TWP	11/13/2004	SATURDAY	0707	SH 17	26.1	1 DRIVER
FORT LEE BORO	11/17/2004	WEDNESDAY	1108	ANDERSON AVE	0.0	1 PEDESTRIAN
FORT LEE BORO	12/02/2004	THURSDAY	2234	SH 4	10.6	1 DRIVER
SADDLE BROOK TWP	12/14/2004	TUESDAY	1909	NEDELLEC DR	0.0	1 PEDESTRIAN
HACKENSACK CITY	12/18/2004	SATURDAY	1508	SOUTH RIVER ST	0.0	1 BICYCLIST
RUTHERFORD BORO	12/21/2004	TUESDAY	1735	CR 532	0.0	1 PEDESTRIAN

BURLINGTON COUNTY

MUNICIPALITY	DATE	DAY	TIME	ROADWAY	MP	PERSONS KILLED
WESTAMPTON TWP	01/03/2004	SATURDAY	1022	CR 626	0.0	1 DRIVER
SPRINGFIELD TWP	01/11/2004	SUNDAY	1429	BURRS RD	0.0	1 PASSENGER
BASS RIVER TWP	01/24/2004	SATURDAY	0627	PARKWAY	54.4	1 PASSENGER
SPRINGFIELD TWP	01/27/2004	TUESDAY	0848	TURNPIKE	45.9	1 DRIVER
WASHINGTON TWP	02/29/2004	SUNDAY	1702	CR 563	0.0	1 DRIVER
MANSFIELD TWP	03/01/2004	MONDAY	1849	US 130	51.9	1 DRIVER
WRIGHTSTOWN BORO	03/08/2004	MONDAY	0314	CR 670	0.0	1 DRIVER
WESTAMPTON TWP	03/09/2004	TUESDAY	0715	I-295	44.8	1 DRIVER
PEMBERTON TWP	03/14/2004	SUNDAY	1645	CR 530	0.0	1 DRIVER
BURLINGTON TWP	03/29/2004	MONDAY	1847	TURNPIKE	45.5	1 DRIVER
PEMBERTON TWP	04/10/2004	SATURDAY	1649	CR 646	0.0	1 DRIVER
CINNAMINSON TWP	04/16/2004	FRIDAY	1135	RIVERTON RD	0.0	1 PASSENGER
MEDFORD TWP	04/16/2004	FRIDAY	2012	CR 541	0.0	1 DRIVER
MOORESTOWN TWP	04/19/2004	MONDAY	1224	SH 38	7.6	1 DRIVER
MOUNT LAUREL TWP	04/27/2004	TUESDAY	0012	CR 616	0.0	1 PASSENGER
BURLINGTON TWP	05/07/2004	FRIDAY	0942	CR 543	0.0	1 DRIVER
SOUTHAMPTON TWP	05/08/2004	SATURDAY	1637	SH 70	21.7	1 PASSENGER
SOUTHAMPTON TWP	05/12/2004	WEDNESDAY	1545	CR 530	0.0	1 DRIVER
MEDFORD TWP	05/13/2004	THURSDAY	1957	CR 616	0.0	1 DRIVER
LUMBERTON TWP	05/16/2004	SUNDAY	2316	SH 38	15.3	1 BICYCLIST
SPRINGFIELD TWP	06/02/2004	WEDNESDAY	1900	PETTICOAT BRIDGE RD	0.0	1 DRIVER
SPRINGFIELD TWP	06/11/2004	FRIDAY	1429	CR 537	0.0	1 DRIVER
BURLINGTON TWP	06/12/2004	SATURDAY	2125	CR 541	0.0	1 PEDESTRIAN
PEMBERTON TWP	07/01/2004	THURSDAY	0602	HANOVER BLVD	0.0	1 DRIVER
PEMBERTON TWP	07/03/2004	SATURDAY	1145	UNIVERSITY AVE	0.0	1 BICYCLIST
WILLINGBORO TWP	07/04/2004	SUNDAY	0221	CR 630	0.0	1 DRIVER
FLORENCE TWP	07/11/2004	SUNDAY	1007	TURNPIKE	1.1	1 DRIVER

PEMBERTON TWP	07/21/2004	WEDNESDAY	1025	SH 70	33.3	1 DRIVER
MANSFIELD TWP	07/24/2004	SATURDAY	1759	KINKORA RD	0.0	1 DRIVER
PEMBERTON TWP	07/29/2004	THURSDAY	0418	CR 530	0.0	1 DRIVER
WOODLAND TWP	08/04/2004	WEDNESDAY	1640	SH 72	11.1	1 DRIVER
WASHINGTON TWP	08/08/2004	SUNDAY	1955	CR 563	0.0	1 PASSENGER
BASS RIVER TWP	08/14/2004	SATURDAY	0927	PARKWAY	55.6	1 DRIVER
SOUTHAMPTON TWP	08/17/2004	TUESDAY	1004	SH 70	23.5	1 DRIVER
WILLINGBORO TWP	08/17/2004	TUESDAY	2322	BUCKINGHAM DR	0.0	1 DRIVER
WESTAMPTON TWP	08/27/2004	FRIDAY	0118	CR 630	0.0	1 DRIVER
BURLINGTON TWP	09/09/2004	THURSDAY	1959	CR 541	0.0	1 PEDESTRIAN
CHESTERFIELD TWP	09/10/2004	FRIDAY	1426	CR 528	0.0	1 BICYCLIST
PEMBERTON TWP	09/22/2004	WEDNESDAY	1300	CR 545	0.0	1 DRIVER
EVESHAM TWP	09/29/2004	WEDNESDAY	1836	WEST LINCOLN DR	0.0	1 DRIVER
MOUNT LAUREL TWP	10/01/2004	FRIDAY	1332	BRIGGS ROAD	0.0	1 DRIVER
LUMBERTON TWP	10/03/2004	SUNDAY	1145	CR 541	0.0	1 PEDESTRIAN
WASHINGTON TWP	10/05/2004	TUESDAY	1802	CR 563	0.0	1 DRIVER
PEMBERTON TWP	10/07/2004	THURSDAY	1907	HANOVER BLVD	0.0	1 PASSENGER
SPRINGFIELD TWP	10/09/2004	SATURDAY	0001	GILBERT RD	0.0	1 DRIVER
BORDENTOWN TWP	10/15/2004	FRIDAY	1713	US 206	36.3	1 DRIVER, 1 PASSENGER
BURLINGTON TWP	10/20/2004	WEDNESDAY	1010	US 130	49.0	1 PASSENGER
SHAMONG TWP	10/24/2004	SUNDAY	0100	CR 541	0.0	1 DRIVER
CHESTERFIELD TWP	10/29/2004	FRIDAY	0656	TURNPIKE	56.0	1 PASSENGER
NORTH HANOVER TWP	10/30/2004	SATURDAY	1744	CR 537	0.0	1 PASSENGER
LUMBERTON TWP	11/29/2004	MONDAY	1735	CR 691	0.0	1 DRIVER
BORDENTOWN TWP	12/18/2004	SATURDAY	0214	US 130	55.2	1 PEDESTRIAN
BASS RIVER TWP	12/19/2004	SUNDAY	0640	PARKWAY	51.8	1 DRIVER
WESTAMPTON TWP	12/23/2004	THURSDAY	1927	I-295	45.3	1 DRIVER
WESTAMPTON TWP	12/31/2004	FRIDAY	0418	CR 541	0.0	1 DRIVER

CAMDEN COUNTY

MUNICIPALITY	DATE	DAY	TIME	ROADWAY	MP	PERSONS KILLED
WINSLOW TWP	01/16/2004	FRIDAY	2242	CR 720	0.0	1 PASSENGER
PENNSAUKEN TWP	01/18/2004	SUNDAY	0313	SH 73	32.6	1 DRIVER, 1 PASSENGER
CHERRY HILL TWP	01/24/2004	SATURDAY	0323	I-295	35.1	1 DRIVER
SOMERDALE BORO	02/13/2004	FRIDAY	0143	US 30	10.6	1 DRIVER
PINE HILL BORO	02/19/2004	THURSDAY	0324	CR 702	0.0	1 DRIVER
CAMDEN CITY	03/11/2004	THURSDAY	1949	HAYES AVE	0.0	1 BICYCLIST
CAMDEN CITY	03/15/2004	MONDAY	1804	HARRISON AVE	0.0	1 DRIVER
CAMDEN CITY	04/09/2004	FRIDAY	0555	US 30	1.9	1 PEDESTRIAN
CHESILHURST BORO	05/04/2004	TUESDAY	2054	US 30	21.7	1 PEDESTRIAN
WINSLOW TWP	05/15/2004	SATURDAY	1900	EXPRESSWAY	40.8	1 DRIVER
CAMDEN CITY	05/28/2004	FRIDAY	1215	MOUNT EPHRAIM AVE	0.0	1 PEDESTRIAN
PENNSAUKEN TWP	05/29/2004	SATURDAY	0159	US 130	30.7	1 DRIVER
CAMDEN CITY	05/30/2004	SUNDAY	0511	US 30	1.6	1 PEDESTRIAN
CHERRY HILL TWP	06/25/2004	FRIDAY	02133	SH 38	2.9	1 PEDESTRIAN
BERLIN TWP	07/05/2004	MONDAY	0159	SH 73	16.0	1 PEDESTRIAN
HADDON HEIGHTS BORO	07/06/2004	TUESDAY	1135	CR 656	0.0	1 DRIVER
WATERFORD TWP	07/25/2004	SUNDAY	1844	HENDRICKS RD	0.0	1 DRIVER, 1 PASSENGER
RUNNEMEDE BORO	08/18/2004	WEDNESDAY	1317	SH 41	4.4	1 DRIVER
PENNSAUKEN TWP	08/20/2004	FRIDAY	0835	US 130	3.7	1 DRIVER
CHERRY HILL TWP	08/30/2004	MONDAY	1829	SH 154	1.4	1 DRIVER
GLOUCESTER TWP	09/05/2004	SUNDAY	2010	CR 687	0.0	1 DRIVER
BELLMAWR BORO	09/17/2004	FRIDAY	0123	I-295	27.7	2 PASSENGERS
WINSLOW TWP	09/17/2004	FRIDAY	1547	EXPRESSWAY	39.0	1 DRIVER
WINSLOW TWP	09/22/2004	WEDNESDAY	1959	CR 720	0.0	1 DRIVER
WINSLOW TWP	10/03/2004	SUNDAY	1715	CR 561	0.0	1 DRIVER
CHERRY HILL TWP	10/08/2004	FRIDAY	2345	SH 70	1.6	1 DRIVER
WINSLOW TWP	10/30/2004	SATURDAY	1132	EAST FACTORY RD	0.0	1 PASSENGER
CAMDEN CITY	11/01/2004	MONDAY	1448	I-676	2.8	1 DRIVER
PENNSAUKEN TWP	11/11/2004	THURSDAY	1720	SH 73	32.5	1 PEDESTRIAN
CHERRY HILL TWP	11/12/2004	FRIDAY	1447	CR 644	0.0	1 DRIVER
GLOUCESTER CITY	12/21/2004	TUESDAY	0212	SH 42	6.7	1 DRIVER
CHERRY HILL TWP	12/26/2004	SUNDAY	1827	SH 38	2.6	1 PASSENGER

CAPE MAY COUNTY

MUNICIPALITY	DATE	DAY	TIME	ROADWAY	MP	PERSONS KILLED
DENNIS TWP	02/05/2004	THURSDAY	0306	SH 83	3.3	1 DRIVER
LOWER TWP	04/02/2004	FRIDAY	2315	US 9	6.2	1 PEDESTRIAN
MIDDLE TWP	05/03/2004	MONDAY	2034	US 9	9.1	1 PEDESTRIAN
UPPER TWP	06/11/2004	FRIDAY	0229	PARKWAY	22.7	1 DRIVER
MIDDLE TWP	06/16/2004	WEDNESDAY	2115	SH 47	3.1	1 DRIVER
UPPER TWP	06/19/2004	SATURDAY	0023	PARKWAY	23.1	1 PASSENGER
MIDDLE TWP	08/06/2004	FRIDAY	0814	US 9	7.9	1 PEDESTRIAN
MIDDLE TWP	08/06/2004	FRIDAY	1456	CR 603	0.0	1 DRIVER
MIDDLE TWP	08/23/2004	MONDAY	1916	CR 618	0.0	1 DRIVER
SEA ISLE CITY	09/04/2004	SATURDAY	2100	CR 619	0.0	1 PEDESTRIAN
WILDWOOD CITY	09/18/2004	SATURDAY	0200	CR 621	0.0	1 PEDESTRIAN
DENNIS TWP	09/25/2004	SATURDAY	1359	SH 47	19.3	1 DRIVER
MIDDLE TWP	11/04/2004	THURSDAY	2216	PARKWAY	9.9	1 PASSENGER
LOWER TWP	11/17/2004	WEDNESDAY	0735	CR 648	0.0	1 DRIVER
MIDDLE TWP	12/24/2004	FRIDAY	1830	SH 47	13.7	1 PEDESTRIAN

CUMBERLAND COUNTY

MUNICIPALITY	DATE	DAY	TIME	ROADWAY	MP	PERSONS KILLED
DEERFIELD TWP	03/17/2004	WEDNESDAY	1009	SH 56	3.3	1 DRIVER
MAURICE RIVER TWP	04/01/2004	THURSDAY	0320	SH 47	32.2	1 DRIVER
UPPER DEERFIELD TWP	04/02/2004	FRIDAY	0739	SH 77	6.0	1 DRIVER
VINELAND CITY	05/06/2004	THURSDAY	2136	SH 55	31.6	1 PASSENGER
MILLVILLE CITY	05/14/2004	FRIDAY	0420	CR 698	0.0	1 PEDESTRIAN
VINELAND CITY	05/17/2004	MONDAY	0911	NW BLVD	0.0	1 DRIVER
FAIRFIELD TWP	06/11/2004	FRIDAY	2137	CR 692	0.0	1 DRIVER
VINELAND CITY	06/24/2004	THURSDAY	2218	W CHESTNUT AVE	0.0	1 DRIVER, 1 PASSENGER
VINELAND CITY	07/01/2004	THURSDAY	1617	CR 540	0.0	1 DRIVER
MAURICE RIVER TWP	07/11/2004	SUNDAY	1846	SH 47	34.8	1 PASSENGER
VINELAND CITY	07/16/2004	FRIDAY	2201	STATE ST	0.0	1 DRIVER
VINELAND CITY	08/02/2004	MONDAY	2100	EAST LANDIS AVE	0.0	1 DRIVER, 1 PASSENGER
BRIDGETON CITY	08/03/2004	TUESDAY	0808	CR 609	0.0	1 PEDESTRIAN
UPPER DEERFIELD TWP	08/31/2004	TUESDAY	1748	CR 553	0.0	1 DRIVER
UPPER DEERFIELD TWP	09/18/2004	SATURDAY	1432	CR 553	0.0	1 PASSENGER
VINELAND CITY	12/23/2004	THURSDAY	0530	ROOSEVELT BLVD	0.0	1 DRIVER

ESSEX COUNTY

MUNICIPALITY	DATE	DAY	TIME	ROADWAY	MP	PERSONS KILLED
NEWARK CITY	01/01/2004	THURSDAY	1945	LITTLETON AVENUE	0.0	1 PASSENGER
NEWARK CITY	01/15/2004	THURSDAY	0355	CR 509	0.0	1 DRIVER
BLOOMFIELD TOWN	01/18/2004	SUNDAY	1913	WILLOW ST	0.0	1 PEDESTRIAN
FAIRFIELD TWP	01/22/2004	THURSDAY	1421	CR 506	0.0	1 DRIVER
BLOOMFIELD TOWN	02/02/2004	MONDAY	1858	NEWARK AVENUE	0.0	1 PEDESTRIAN
NEWARK CITY	02/03/2004	TUESDAY	0201	US 1	0.5	1 DRIVER
NEWARK CITY	02/15/2004	SUNDAY	1808	16TH AVE	0.0	1 PASSENGER
NEWARK CITY	02/19/2004	THURSDAY	0145	BRUNSWICK AVE	0.0	1 DRIVER
NEWARK CITY	03/01/2004	MONDAY	1820	FRANKLIN AVE	0.0	1 PEDESTRIAN
WEST ORANGE TOWN	03/04/2004	THURSDAY	0101	CR 636	0.0	1 DRIVER, 1 PASSENGER
NUTLEY TOWN	03/07/2004	SUNDAY	0245	PASSAIC AVE	0.0	1 DRIVER
VERONA BORO	04/08/2004	THURSDAY	1415	CR 637	0.0	1 DRIVER
NEWARK CITY	04/11/2004	SUNDAY	2219	US 1 & 9	0.0	1 PEDESTRIAN
NEWARK CITY	04/17/2004	SATURDAY	1509	DELANCY ST	0.0	1 DRIVER
NEWARK CITY	04/18/2004	SUNDAY	0001	I-78	56.8	1 DRIVER
IRVINGTON TOWN	04/19/2004	MONDAY	1103	CLINTON AVE	0.0	1 BICYCLIST
WEST ORANGE TOWN	04/20/2004	TUESDAY	1359	CR 611	0.0	1 PASSENGER
IRVINGTON TOWN	04/29/2004	THURSDAY	1848	SPRINGFIELD AVE	0.0	1 DRIVER
NEWARK CITY	05/02/2004	SUNDAY	0230	RAYMOND BLVD	0.0	1 DRIVER
WEST ORANGE TOWN	05/04/2004	TUESDAY	0516	I-280	6.6	1 DRIVER
MILLBURN TWP	05/19/2004	WEDNESDAY	0902	SH 24	8.0	1 DRIVER
NEWARK CITY	06/02/2004	WEDNESDAY	1207	FRONTAGE ROAD	0.0	1 DRIVER
NEWARK CITY	06/19/2004	SATURDAY	1136	I-78 WB	57.2	1 DRIVER
NEWARK CITY	06/19/2004	SATURDAY	0115	LYONS AVE	0.0	1 PEDESTRIAN

NEWARK CITY	06/22/2004	TUESDAY	2320	FERRY ST	0.0	1 DRIVER
NEWARK CITY	06/23/2004	WEDNESDAY	1136	MARKET ST	0.0	1 PEDESTRIAN
BELLEVILLE TOWN	06/28/2004	MONDAY	0809	NORTH 7TH ST	0.0	1 PASSENGER
IRVINGTON TOWN	06/29/2004	TUESDAY	1613	CR 619	0.0	1 PASSENGER
ORANGE CITY	07/05/2004	MONDAY	1819	S ESSEX AVE	0.0	1 BICYCLIST
NEWARK CITY	07/10/2004	SATURDAY	1801	S 13TH ST	0.0	1 DRIVER
BELLEVILLE TOWN	07/15/2004	THURSDAY	1315	SH 21	5.8	1 DRIVER
NEWARK CITY	07/18/2004	SUNDAY	0337	US 1 & 9	0.0	1 DRIVER
NEWARK CITY	07/23/2004	FRIDAY	0253	US 1	0.0	1 DRIVER
NEWARK CITY	08/01/2004	SUNDAY	2320	FRELINGHUYSEN AVE	0.0	1 PEDESTRIAN
FAIRFIELD TWP	08/03/2004	TUESDAY	1357	CR 613	0.0	1 DRIVER
IRVINGTON TOWN	08/11/2004	WEDNESDAY	1748	CR 603	0.0	1 DRIVER
EAST ORANGE CITY	08/18/2004	WEDNESDAY	1500	NORTH GROVE ST	0.0	1 PEDESTRIAN
BLOOMFIELD TOWN	08/20/2004	FRIDAY	0158	CR 506	0.0	1 DRIVER
NEWARK CITY	08/31/2004	TUESDAY	0900	BERGEN ST	0.0	1 PEDESTRIAN
WEST ORANGE TOWN	09/03/2004	FRIDAY	1403	SH 10	0.0	2 PASSENGERS
NEWARK CITY	09/06/2004	MONDAY	1737	US 1	0.0	1 DRIVER
NEWARK CITY	09/17/2004	FRIDAY	0417	POLK ST	0.0	1 DRIVER
EAST ORANGE CITY	09/23/2004	THURSDAY	2018	FREEWAY DR	0.0	1 PEDESTRIAN
NUTLEY TOWN	10/02/2004	SATURDAY	0322	PASSAIC AVENUE	0.0	1 DRIVER, 1 PASSENGER
WEST ORANGE TOWN	10/07/2004	THURSDAY	0140	SH 10	0.0	1 DRIVER
NEWARK CITY	10/11/2004	MONDAY	0940	SO 11TH ST	0.0	1 PEDESTRIAN
EAST ORANGE CITY	10/13/2004	WEDNESDAY	0610	N PARK ST	0.0	1 PEDESTRIAN
FAIRFIELD TWP	10/14/2004	THURSDAY	0217	I-80	52.3	1 DRIVER
MILLBURN TWP	10/15/2004	FRIDAY	2305	SH 24	8.1	1 DRIVER
FAIRFIELD TWP	10/15/2004	FRIDAY	2134	I-80	49.1	1 DRIVER
NEWARK CITY	10/17/2004	SUNDAY	0327	TURNPIKE	0.2	1 PASSENGER
NEWARK CITY	10/24/2004	SUNDAY	0435	RAYMOND BLVD	0.0	1 DRIVER, 2 PASSENGERS
EAST ORANGE CITY	10/31/2004	SUNDAY	0140	TREMONT AVE	0.0	1 PASSENGER
NEWARK CITY	10/31/2004	SUNDAY	1137	ELIZABETH AVE	0.0	2 PEDESTRIANS
MAPLEWOOD TWP	11/03/2004	WEDNESDAY	0844	CR 665	0.0	1 PEDESTRIAN
IRVINGTON TOWN	11/10/2004	WEDNESDAY	2048	PARKWAY	143.5	1 DRIVER
WEST CALDWELL BORO	11/25/2004	THURSDAY	0205	PASSAIC AVE	0.0	1 PASSENGER
ORANGE CITY	12/08/2004	WEDNESDAY	0441	S. CENTER ST	0.0	1 PASSENGER
MILLBURN TWP	12/14/2004	TUESDAY	1322	CR 527	0.0	1 PEDESTRIAN
NEWARK CITY	12/21/2004	TUESDAY	0200	US 1	0.0	1 PASSENGER
NUTLEY TOWN	12/24/2004	FRIDAY	0107	FRANKLIN AVE	0.0	1 PEDESTRIAN
NEWARK CITY	12/24/2004	FRIDAY	0411	US 22	0.0	1 PEDESTRIAN
WEST ORANGE TOWN	12/26/2004	SUNDAY	1749	CR 659	0.0	2 PEDESTRIANS
NEWARK CITY	12/30/2004	THURSDAY	0645	SH 21	0.0	1 PEDESTRIAN

GLoucester County

MUNICIPALITY	DATE	DAY	TIME	ROADWAY	MP	PERSONS KILLED
WESTVILLE BORO	01/13/2004	TUESDAY	0655	I-295	25.2	1 DRIVER
MONROE TWP	02/02/2004	MONDAY	0653	US 322	23.5	1 DRIVER
FRANKLIN TWP	02/05/2004	THURSDAY	0621	CR 655	0.0	1 DRIVER
LOGAN TWP	03/18/2004	THURSDAY	0254	MALLARD CT	0.0	1 PASSENGER
FRANKLIN TWP	04/05/2004	MONDAY	1217	CR 555	0.0	1 PASSENGER
MANTUA TWP	05/01/2004	SATURDAY	1721	SH 55	53.0	1 DRIVER
WEST DEPTFORD TWP	06/09/2004	WEDNESDAY	1617	CR 656	0.0	1 DRIVER
HARRISON TWP	06/27/2004	SUNDAY	1411	SH 45	15.6	1 DRIVER
MONROE TWP	07/20/2004	TUESDAY	0614	CR 536	0.0	1 DRIVER
GREENWICH TWP	07/21/2004	WEDNESDAY	1636	TURNPIKE	18.2	1 DRIVER
FRANKLIN TWP	07/24/2004	SATURDAY	2155	TAYLOR RD	0.0	1 DRIVER
EAST GREENWICH TWP	08/20/2004	FRIDAY	1758	CR 667	0.0	1 PASSENGER
WEST DEPTFORD TWP	08/29/2004	SUNDAY	1929	CR 656	0.0	1 DRIVER
DEPTFORD TWP	09/05/2004	SUNDAY	1721	SH 42	11.6	1 DRIVER
DEPTFORD TWP	09/12/2004	SUNDAY	0202	SH 47 7	0.0	1 DRIVER
SOUTH HARRISON TWP	09/20/2004	MONDAY	1156	SH 45	14.2	1 DRIVER
SOUTH HARRISON TWP	09/23/2004	THURSDAY	1305	CR 581	0.0	1 DRIVER
LOGAN TWP	09/26/2004	SUNDAY	1754	HIGH HILL RD	0.0	1 DRIVER, 1 PASSENGER
WASHINGTON TWP	10/15/2004	FRIDAY	1721	CR 635	0.0	1 DRIVER
WASHINGTON TWP	11/30/2004	TUESDAY	1726	ALDEBERAN DR	0.0	1 PEDESTRIAN
DEPTFORD TWP	12/15/2004	WEDNESDAY	1408	SH 47	71.7	1 PASSENGER
WASHINGTON TWP	12/24/2004	FRIDAY	1745	CR 651	0.0	2 DRIVERS
DEPTFORD TWP	12/29/2004	WEDNESDAY	1600	SH 47	68.2	1 DRIVER
WEST DEPTFORD TWP	12/31/2004	FRIDAY	1816	I-295	24.5	1 DRIVER

HUDSON COUNTY

MUNICIPALITY	DATE	DAY	TIME	ROADWAY	MP	PERSONS KILLED
UNION CITY	02/14/2004	SATURDAY	1802	NEW YORK AVE	0.0	1 DRIVER
JERSEY CITY	02/29/2004	SUNDAY	1504	COMMUNIPAW AVE	0.0	1 DRIVER
SECAUCUS TOWN	03/10/2004	WEDNESDAY	1546	TURNPIKE	110.8	1 DRIVER, 1 PASSENGER
JERSEY CITY	04/06/2004	TUESDAY	0934	MONTGOMERY ST	0.0	1 PEDESTRIAN
KEARNY TOWN	04/15/2004	THURSDAY	2147	TURNPIKE	108.2	1 DRIVER
KEARNY TOWN	05/10/2004	MONDAY	1415	KEARNY AVE	0.0	1 DRIVER
NORTH BERGEN TWP	05/30/2004	SUNDAY	0213	KENNEDY BLVD	0.0	1 PEDESTRIAN
JERSEY CITY	06/04/2004	FRIDAY	0814	CENTER ST	0.0	1 DRIVER
HOBOKEN CITY	06/14/2004	MONDAY	1749	NEWARK ST	0.0	1 BICYCLIST
KEARNY TOWN	06/21/2004	MONDAY	1642	I-280	16.2	1 DRIVER
NORTH BERGEN TWP	06/27/2004	SUNDAY	1914	US 1	57.9	1 DRIVER
JERSEY CITY	07/29/2004	THURSDAY	2156	US 1 & 9	0.0	1 DRIVER
JERSEY CITY	09/24/2004	FRIDAY	0826	SUMMIT AVE	0.0	1 PEDESTRIAN
SECAUCUS TOWN	10/01/2004	FRIDAY	1928	TURNPIKE	113.2	1 DRIVER
KEARNY TOWN	11/01/2004	MONDAY	0448	CR 508	0.0	2 PASSENGERS
SECAUCUS TOWN	11/06/2004	SATURDAY	2102	TURNPIKE	110.6	1 PASSENGER
NORTH BERGEN TWP	12/20/2004	MONDAY	1036	76TH ST	0.0	1 PEDESTRIAN

HUNTERDON COUNTY

MUNICIPALITY	DATE	DAY	TIME	ROADWAY	MP	PERSONS KILLED
CLINTON TWP	01/23/2004	FRIDAY	2304	I-78	21.5	1 PEDESTRIAN
LEBANON BORO	02/10/2004	TUESDAY	2005	US 22	21.6	1 PEDESTRIAN
READINGTON TWP	05/01/2004	SATURDAY	0423	I-78	25.7	1 DRIVER
HOLLAND TWP	06/18/2004	FRIDAY	1918	CR 627	0.0	1 DRIVER
UNION TWP	08/13/2004	FRIDAY	0542	I-78	13.7	1 DRIVER
READINGTON TWP	09/11/2004	SATURDAY	0608	I-78	25.8	1 DRIVER, 1 PASSENGER
KINGWOOD TWP	10/17/2004	SUNDAY	2224	SH 29	29.8	1 PASSENGER
CLINTON TWP	10/21/2004	THURSDAY	1550	I-78	16.6	1 DRIVER
RARITAN TWP	11/20/2004	SATURDAY	0713	REAVILLE RD	0.0	1 DRIVER

MERCER COUNTY

MUNICIPALITY	DATE	DAY	TIME	ROADWAY	MP	PERSONS KILLED
TRENTON CITY	01/17/2004	SATURDAY	1015	ELMER ST	0.0	1 PEDESTRIAN
TRENTON CITY	01/18/2004	SUNDAY	0802	SH 29	5.5	1 DRIVER
EAST WINDSOR TWP	01/28/2004	WEDNESDAY	0616	SH 133	1.8	1 DRIVER
HOPEWELL TWP	01/30/2004	FRIDAY	2008	CR 518	0.0	1 DRIVER
WASHINGTON TWP	03/19/2004	FRIDAY	1136	US 130	66.1	1 DRIVER
TRENTON CITY	03/21/2004	SUNDAY	1416	SH 29	4.3	1 PASSENGER
TRENTON CITY	04/15/2004	THURSDAY	2235	US 1	1.4	1 DRIVER
HAMILTON TWP	04/22/2004	THURSDAY	1328	I-295	60.2	1 DRIVER
HAMILTON TWP	04/23/2004	FRIDAY	2103	US 130	58.4	1 DRIVER
HOPEWELL TWP	04/29/2004	THURSDAY	0743	SH 29	16.0	1 PEDESTRIAN
EAST WINDSOR TWP	05/01/2004	SATURDAY	0040	TURNPIKE	65.8	1 PASSENGER
HOPEWELL TWP	05/09/2004	SUNDAY	2149	I-95	4.2	1 PASSENGER
EWING TWP	05/21/2004	FRIDAY	2000	CLEARDALE AVE	0.0	1 DRIVER
HAMILTON TWP	06/04/2004	FRIDAY	0037	TURNPIKE	57.3	1 DRIVER
HAMILTON TWP	06/04/2004	FRIDAY	1434	US 130	60.9	1 DRIVER, 1 PASSENGER
HOPEWELL TWP	06/28/2004	MONDAY	0639	SH 31	5.4	1 DRIVER
HAMILTON TWP	08/02/2004	MONDAY	0902	I-195	1.3	1 DRIVER
WEST WINDSOR TWP	08/12/2004	THURSDAY	1248	CR 571	0.0	1 PEDESTRIAN
WASHINGTON TWP	08/15/2004	SUNDAY	1735	TURNPIKE	60.0	1 DRIVER
EWING TWP	09/21/2004	TUESDAY	2000	SH 31	2.8	1 DRIVER
TRENTON CITY	09/27/2004	MONDAY	0626	WEST STATE ST	0.0	1 DRIVER
PRINCETON TWP	10/07/2004	THURSDAY	1935	CR 533	0.0	1 DRIVER
PRINCETON BORO	11/04/2004	THURSDAY	1409	SNOWDEN LN	0.0	1 DRIVER
TRENTON CITY	11/05/2004	FRIDAY	2030	DAYTON ST	0.0	1 PASSENGER
EAST WINDSOR TWP	11/06/2004	SATURDAY	0126	US 130	69.5	1 DRIVER
HOPEWELL TWP	11/08/2004	MONDAY	1531	SH 29	15.7	1 DRIVER
LAWRENCE TWP	11/09/2004	TUESDAY	1514	CR 583	0.0	1 PASSENGER
HAMILTON TWP	11/17/2004	WEDNESDAY	0558	TURNPIKE	59.2	1 DRIVER
EAST WINDSOR TWP	12/01/2004	WEDNESDAY	0653	US 130	69.8	1 PEDESTRIAN
HAMILTON TWP	12/30/2004	THURSDAY	1817	KLOCKNER RD	0.0	1 PEDESTRIAN

MIDDLESEX COUNTY

MUNICIPALITY	DATE	DAY	TIME	ROADWAY	MP	PERSONS KILLED
OLD BRIDGE TWP	01/19/2004	MONDAY	0917	SH 35	46.8	1 DRIVER
SOUTH BRUNSWICK TWP	01/21/2004	WEDNESDAY	0855	BLACKHORSE LANE	0.0	1 DRIVER
SAYREVILLE BORO	01/25/2004	SUNDAY	2050	PARKWAY	126.0	1 DRIVER
CARTERET BORO	01/31/2004	SATURDAY	0037	CR 602	0.0	1 DRIVER
MONROE TWP	02/03/2004	TUESDAY	1541	TEXAS RD	0.0	1 DRIVER
WOODBIDGE TWP	02/05/2004	THURSDAY	2328	PARKWAY	134.8	1 DRIVER
PISCATAWAY TWP	02/19/2004	THURSDAY	1925	CR 529	0.0	1 PEDESTRIAN
DUNELLEN BORO	02/20/2004	FRIDAY	1241	SH 28	12.2	1 DRIVER
PISCATAWAY TWP	03/12/2004	FRIDAY	2038	CR 665	0.0	1 DRIVER
OLD BRIDGE TWP	03/15/2004	MONDAY	1841	US 9	123.1	1 PEDESTRIAN
MIDDLESEX BORO	03/31/2004	WEDNESDAY	1938	SH 28	9.9	1 PEDESTRIAN
PERTH AMBOY CITY	03/31/2004	WEDNESDAY	1258	CR 653	0.0	1 DRIVER
SOUTH BRUNSWICK TWP	04/30/2004	FRIDAY	2111	US 1	14.1	1 DRIVER
SAYREVILLE BORO	05/02/2004	SUNDAY	0006	SH 35	47.5	1 DRIVER
MILLTOWN BORO	05/02/2004	SUNDAY	2250	TURNPIKE	80.7	1 DRIVER
NORTH BRUNSWICK TWP	05/03/2004	MONDAY	2333	US 1	23.7	1 PEDESTRIAN
CRANBURY TWP	05/08/2004	SATURDAY	2243	DEY RD	0.0	1 DRIVER
WOODBIDGE TWP	05/15/2004	SATURDAY	0222	PARKWAY	130.0	1 PEDESTRIAN
EDISON TWP	05/28/2004	FRIDAY	1038	CR 514	0.0	1 PASSENGER
SAYREVILLE BORO	05/29/2004	SATURDAY	1537	CR 535	0.0	1 PEDESTRIAN
PISCATAWAY TWP	06/03/2004	THURSDAY	1250	CR 529	0.0	1 DRIVER
WOODBIDGE TWP	06/04/2004	FRIDAY	2301	SH 27	25.0	1 DRIVER
WOODBIDGE TWP	06/06/2004	SUNDAY	1918	TURNPIKE	90.3	1 PASSENGER
WOODBIDGE TWP	06/07/2004	MONDAY	1403	SH 27	24.8	1 DRIVER
EDISON TWP	06/08/2004	TUESDAY	0208	US 1	33.4	1 DRIVER
OLD BRIDGE TWP	06/11/2004	FRIDAY	1721	MARLBORO RD	0.0	1 DRIVER
PISCATAWAY TWP	06/18/2004	FRIDAY	1436	CENTENNIAL AVE	0.0	1 DRIVER
OLD BRIDGE TWP	06/18/2004	FRIDAY	2050	SH 18	33.0	1 DRIVER
OLD BRIDGE TWP	07/04/2004	SUNDAY	0547	US 9	125.0	1 DRIVER
SOUTH BRUNSWICK TWP	07/12/2004	MONDAY	1439	CR 522	0.0	1 DRIVER, 1 PASSENGER
EDISON TWP	07/15/2004	THURSDAY	1711	JAMES ST	0.0	1 PEDESTRIAN
EAST BRUNSWICK TWP	07/18/2004	SUNDAY	0545	TURNPIKE	83.3	1 PASSENGER
CARTERET BORO	07/20/2004	TUESDAY	2241	INDUSTRIAL AVE	0.0	1 DRIVER
EAST BRUNSWICK TWP	08/05/2004	THURSDAY	0253	TURNPIKE	81.9	1 PASSENGER
EAST BRUNSWICK TWP	08/15/2004	SUNDAY	0046	SH 18	35.0	1 DRIVER
EDISON TWP	08/20/2004	FRIDAY	0815	TURNPIKE	88.9	1 DRIVER
SAYREVILLE BORO	08/21/2004	SATURDAY	0128	JERNEE MILL RD	0.0	1 PASSENGER
OLD BRIDGE TWP	08/28/2004	SATURDAY	1113	CR 615	0.0	1 DRIVER
WOODBIDGE TWP	08/28/2004	SATURDAY	0157	US 9	134.1	1 DRIVER
NORTH BRUNSWICK TWP	09/04/2004	SATURDAY	2125	SH 27	13.2	1 PEDESTRIAN
EDISON TWP	09/19/2004	SUNDAY	0126	TALMADGE RD	0.0	1 DRIVER
PERTH AMBOY CITY	09/22/2004	WEDNESDAY	2101	SH 440	3.6	1 DRIVER
WOODBIDGE TWP	09/27/2004	MONDAY	0510	US 1	38.4	1 PEDESTRIAN
MONROE TWP	10/05/2004	TUESDAY	1305	OLD FORGE RD	0.0	1 DRIVER
NORTH BRUNSWICK TWP	10/05/2004	TUESDAY	0834	HERMAN RD	0.0	1 PEDESTRIAN
EAST BRUNSWICK TWP	10/16/2004	SATURDAY	1752	RIVA RD	0.0	1 PASSENGER
WOODBIDGE TWP	11/03/2004	WEDNESDAY	1620	CR 656	0.0	1 PEDESTRIAN
WOODBIDGE TWP	11/03/2004	WEDNESDAY	2007	US 1	37.1	1 PEDESTRIAN
PERTH AMBOY CITY	11/04/2004	THURSDAY	0647	CARSON AVE	0.0	1 PASSENGER
OLD BRIDGE TWP	11/12/2004	FRIDAY	0611	CR 516	0.0	1 PEDESTRIAN
OLD BRIDGE TWP	11/12/2004	FRIDAY	2043	US 9	124.0	1 DRIVER
SPOTSWOOD BORO	12/08/2004	WEDNESDAY	1217	CR 615	0.0	1 DRIVER
NORTH BRUNSWICK TWP	12/08/2004	WEDNESDAY	2016	SH 171	0.0	1 DRIVER
SAYREVILLE BORO	12/10/2004	FRIDAY	0308	US 9	129.2	1 PEDESTRIAN
OLD BRIDGE TWP	12/19/2004	SUNDAY	0818	PARKWAY	121.0	1 DRIVER
EDISON TWP	12/30/2004	THURSDAY	1424	CR 604	0.0	1 BICYCLIST

MONMOUTH COUNTY

MUNICIPALITY	DATE	DAY	TIME	ROADWAY	MP	PERSONS KILLED
MIDDLETOWN TWP	01/07/2004	WEDNESDAY	2102	COOPER RD	0.0	1 DRIVER
MIDDLETOWN TWP	01/14/2004	WEDNESDAY	1638	PARKWAY	110.0	1 DRIVER
SEA GIRT BORO	01/21/2004	WEDNESDAY	1916	SH 71	2.2	1 PEDESTRIAN

MARLBORO TWP	01/31/2004	SATURDAY	2151	US 9	119.0	1 PEDESTRIAN
EATONTOWN BORO	02/01/2004	SUNDAY	0646	SH 18	13.7	1 DRIVER
HAZLET TWP	02/11/2004	WEDNESDAY	0509	SH 36	23.5	1 PEDESTRIAN
EATONTOWN BORO	02/11/2004	WEDNESDAY	1926	SH 35	30.9	1 BICYCLIST
HOWELL TWP	02/13/2004	FRIDAY	1635	GEORGIA TAVERN RD	0.0	1 DRIVER
MARLBORO TWP	02/17/2004	TUESDAY	0944	SH 18	23.5	1 DRIVER
FREEHOLD TWP	02/21/2004	SATURDAY	0319	CR 53	0.0	1 DRIVER
LONG BRANCH CITY	03/01/2004	MONDAY	0800	OCEAN AVE	0.0	1 DRIVER
HAZLET TWP	03/15/2004	MONDAY	0003	PARKWAY	118.0	1 DRIVER
TINTON FALLS BORO	03/19/2004	FRIDAY	0944	SH 18	15.5	1 DRIVER
UPPER FREEHOLD TWP	04/24/2004	SATURDAY	1018	CR 526	0.0	1 DRIVER
LONG BRANCH CITY	05/30/2004	SUNDAY	2142	SH 36	4.6	1 PEDESTRIAN
MIDDLETOWN TWP	06/03/2004	THURSDAY	1040	SH 36	18.8	1 PEDESTRIAN
HOLMDEL TWP	06/11/2004	FRIDAY	1133	PARKWAY	115.0	1 DRIVER
WALL TWP	07/02/2004	FRIDAY	0104	PARKWAY	95.4	1 DRIVER
MILLSTONE TWP	07/06/2004	TUESDAY	1322	SH 33	0.0	1 DRIVER
ROOSEVELT BORO	07/10/2004	SATURDAY	1743	CR 571	0.0	1 PEDESTRIAN
MILLSTONE TWP	07/23/2004	FRIDAY	1332	MILLSTONE RD	0.0	1 DRIVER
MANALAPAN TWP	08/02/2004	MONDAY	2249	US 9	117.0	1 PEDESTRIAN
FREEHOLD TWP	08/07/2004	SATURDAY	0304	HAMPTON DR	0.0	1 DRIVER
TINTON FALLS BORO	08/20/2004	FRIDAY	2219	PARKWAY	101.0	1 PASSENGER
MILLSTONE TWP	08/22/2004	SUNDAY	0230	CR 524	0.0	1 PASSENGER
WALL TWP	08/29/2004	SUNDAY	1652	CR 18	0.0	1 DRIVER
TINTON FALLS BORO	08/30/2004	MONDAY	1103	CR 547	0.0	1 DRIVER
HAZLET TWP	09/04/2004	SATURDAY	2015	CR 516	0.0	1 DRIVER
ASBURY PARK CITY	09/12/2004	SUNDAY	1452	FOURTH AVE	0.0	1 DRIVER
OCEAN TWP	09/16/2004	THURSDAY	1024	SH 35	25.4	1 PASSENGER
LONG BRANCH CITY	09/19/2004	SUNDAY	1916	SH 36	4.5	1 PEDESTRIAN
TINTON FALLS BORO	09/26/2004	SUNDAY	1828	PARKWAY	108.0	1 DRIVER
COLTS NECK TWP	09/28/2004	TUESDAY	1546	SH 18	17.9	1 DRIVER
MIDDLETOWN TWP	10/01/2004	FRIDAY	1126	OAK HILL RD	0.0	1 DRIVER
ABERDEEN TWP	10/08/2004	FRIDAY	2040	VANBRACKLE RD	0.0	1 DRIVER
NEPTUNE TWP	10/17/2004	SUNDAY	1113	SH 33	38.7	1 PASSENGER
MATAWAN BORO	10/17/2004	SUNDAY	1721	ABERDEEN RD	0.0	1 DRIVER
SPRING LAKE HGT BORO	10/18/2004	MONDAY	1619	FOURTH AVE	0.0	1 DRIVER
MARLBORO TWP	10/20/2004	WEDNESDAY	0537	TEXAS RD	0.0	1 PASSENGER
HAZLET TWP	11/03/2004	WEDNESDAY	2030	SH 36	23.6	1 BICYCLIST
NEPTUNE CITY	11/03/2004	WEDNESDAY	1103	SH 35	22.4	1 PEDESTRIAN
BRIELLE BORO	11/26/2004	FRIDAY	1226	SH 35	14.9	1 DRIVER
HOWELL TWP	11/28/2004	SUNDAY	1538	OAK GLEN RD	0.0	1 DRIVER
HOWELL TWP	12/07/2004	TUESDAY	2012	US 9	105.0	1 PEDESTRIAN
NEPTUNE TWP	12/17/2004	FRIDAY	2016	GOLFVIEW DR	0.0	1 PASSENGER
AVON BY THE SEA BORO	12/19/2004	SUNDAY	0324	RIVERSIDE AVE	0.0	1 DRIVER
FREEHOLD TWP	12/23/2004	THURSDAY	0517	US 9	111.0	1 PEDESTRIAN

MORRIS COUNTY

MUNICIPALITY	DATE	DAY	TIME	ROADWAY	MP	PERSONS KILLED
MORRISTOWN TOWN	01/30/2004	FRIDAY	0158	RIDGEDALE AVE	0.0	1 PEDESTRIAN
PARSIPPANY-TROY HILL	02/24/2004	TUESDAY	1657	I-280	1.5	1 DRIVER
RANDOLPH TWP	03/01/2004	MONDAY	1904	SH 10	4.9	1 PEDESTRIAN
PARSIPPANY-TROY HILL	03/17/2004	WEDNESDAY	0054	I-287	44.2	1 PASSENGER
MONTVILLE TWP	04/05/2004	MONDAY	1943	I-287	46.1	1 DRIVER
PASSAIC TWP	04/10/2004	SATURDAY	1016	OLD MAIN ST	0.0	1 DRIVER
JEFFERSON TWP	05/05/2004	WEDNESDAY	1247	SH 15	7.0	1 DRIVER
ROCKAWAY TWP	05/17/2004	MONDAY	1312	GREENPOND RD	0.0	1 DRIVER
PARSIPPANY-TROY HILL	05/25/2004	TUESDAY	2304	I-80	44.9	1 DRIVER
PARSIPPANY-TROY HILL	05/26/2004	WEDNESDAY	0124	I-80	40.3	1 DRIVER
RANDOLPH TWP	05/28/2004	FRIDAY	1425	SH 10	2.1	1 DRIVER, 2 PASSENGERS
PARSIPPANY-TROY HILL	05/29/2004	SATURDAY	0951	US 202	48.8	1 DRIVER
PARSIPPANY-TROY HILL	06/11/2004	FRIDAY	0019	I-280	0.1	1 DRIVER
KINNELON BORO	06/28/2004	MONDAY	0619	SH 23	19.0	1 DRIVER
FLORHAM PARK BORO	07/04/2004	SUNDAY	0220	PASSAIC AVE	0.0	1 PASSENGER
MOUNT OLIVE TWP	07/14/2004	WEDNESDAY	1540	US 46	23.5	1 DRIVER
ROXBURY TWP	07/18/2004	SUNDAY	1706	I-80	28.4	1 DRIVER
RIVERDALE BORO	07/26/2004	MONDAY	1652	SH 23	13.8	1 DRIVER
WASHINGTON TWP	08/19/2004	THURSDAY	1409	FAIRVIEW AVE	0.0	1 PEDESTRIAN

ROXBURY TWP	08/26/2004	THURSDAY	0411	I-80	27.4	1 DRIVER
PEQUANNOCK TWP	09/15/2004	WEDNESDAY	1604	CR 504	0.0	1 PEDESTRIAN
PEQUANNOCK TWP	09/22/2004	WEDNESDAY	0735	CR 511A	0.0	1 PEDESTRIAN
ROCKAWAY BORO	09/24/2004	FRIDAY	1918	US 46	41.5	1 PASSENGER
ROXBURY TWP	10/02/2004	SATURDAY	0326	I-80	31.0	1 DRIVER
PARSIPPANY-TROY HILL	10/09/2004	SATURDAY	2232	I-80	44.7	1 PASSENGER
ROCKAWAY TWP	10/23/2004	SATURDAY	1931	I-80	36.7	1 DRIVER
MORRIS TWP	10/25/2004	MONDAY	0846	CR 510	0.0	1 DRIVER
WASHINGTON TWP	10/28/2004	THURSDAY	1327	NAUGHRIGHT RD	0.0	1 DRIVER
ROXBURY TWP	11/10/2004	WEDNESDAY	0435	I-80	32.6	1 DRIVER
ROCKAWAY TWP	11/12/2004	FRIDAY	1207	I-80	32.7	1 DRIVER
MADISON BORO	11/20/2004	SATURDAY	0057	CR 647	0.0	1 DRIVER
WHARTON BORO	11/28/2004	SUNDAY	1141	I-80	33.5	1 DRIVER
PARSIPPANY-TROY HILL	11/28/2004	SUNDAY	2100	I-80	42.0	1 PASSENGER
PEQUANNOCK TWP	12/16/2004	THURSDAY	0619	I-287	52.5	1 PASSENGER

OCEAN COUNTY

MUNICIPALITY	DATE	DAY	TIME	ROADWAY	MP	PERSONS KILLED
MANCHESTER TWP	01/17/2004	SATURDAY	1437	SCHOOLHOUSE RD	0.0	1 DRIVER
LACEY TWP	01/31/2004	SATURDAY	0345	US 9	83.7	1 PASSENGER
DOVER TWP	02/03/2004	TUESDAY	0811	CR 571	0.0	1 DRIVER
BEACHWOOD BORO	02/03/2004	TUESDAY	2256	DOUBLE TROUBLE RD	0.0	1 DRIVER
STAFFORD TWP	02/04/2004	WEDNESDAY	0018	PARKWAY	66.0	1 DRIVER
EAGLESWOOD TWP	02/05/2004	THURSDAY	0713	PARKWAY	61.1	1 DRIVER
LAKEWOOD TWP	02/06/2004	FRIDAY	2300	CR 528	0.0	1 DRIVER
BARNEGAT TWP	02/12/2004	THURSDAY	1134	US 9	75.0	2 PASSENGERS
MANCHESTER TWP	03/05/2004	FRIDAY	0948	NORTHAMPTON BLVD	0.0	1 DRIVER
PLUMSTED TWP	03/08/2004	MONDAY	1340	CR 539	0.0	1 DRIVER
DOVER TWP	03/21/2004	SUNDAY	1750	CR 571	0.0	1 PASSENGER
MANCHESTER TWP	03/23/2004	TUESDAY	1454	SH 70	40.2	1 DRIVER
DOVER TWP	03/25/2004	THURSDAY	1254	SH 70	49.0	1 DRIVER
LAKEWOOD TWP	04/01/2004	THURSDAY	1701	CR 528	0.0	1 PEDESTRIAN
SO TOMS RIVER BORO	04/06/2004	TUESDAY	2121	PARKWAY	80.6	1 DRIVER
LAKEWOOD TWP	04/09/2004	FRIDAY	1834	CR 623	0.0	1 DRIVER
BRICK TWP	04/14/2004	WEDNESDAY	0532	SH 88	3.8	1 DRIVER
DOVER TWP	04/16/2004	FRIDAY	1258	WHITTIER AVE	0.0	1 BICYCLIST
MANCHESTER TWP	05/03/2004	MONDAY	1230	CR 530	0.0	1 DRIVER
DOVER TWP	05/22/2004	SATURDAY	2220	OAK AVE	0.0	1 DRIVER
OCEAN TWP	05/26/2004	WEDNESDAY	1619	US 9	77.0	1 DRIVER
LACEY TWP	06/03/2004	THURSDAY	1822	PARKWAY	73.6	1 PASSENGER
DOVER TWP	06/04/2004	FRIDAY	1706	PARKWAY	87.0	1 DRIVER
PLUMSTED TWP	06/12/2004	SATURDAY	1032	CR 528	0.0	1 DRIVER
JACKSON TWP	06/25/2004	FRIDAY	1217	MANHATTAN ST	0.0	1 DRIVER
LITTLE EGG HRBR TWP	06/26/2004	SATURDAY	0535	PARKWAY	56.2	1 PASSENGER
DOVER TWP	07/01/2004	THURSDAY	2128	SH 37	6.6	1 PEDESTRIAN
PINE BEACH BORO	07/01/2004	THURSDAY	0937	MOTOR RD	0.0	1 DRIVER
BERKELEY TWP	07/02/2004	FRIDAY	1805	SERPENTINE DR	0.0	1 PASSENGER
DOVER TWP	07/03/2004	SATURDAY	1018	PARKWAY	87.4	1 DRIVER
JACKSON TWP	07/05/2004	MONDAY	1641	CR 528	0.0	1 DRIVER
DOVER TWP	08/15/2004	SUNDAY	1606	PARKWAY	86.0	1 DRIVER
EAGLESWOOD TWP	08/29/2004	SUNDAY	0446	PARKWAY	60.9	1 DRIVER
DOVER TWP	09/01/2004	WEDNESDAY	0038	PARKWAY	81.6	1 DRIVER
SO TOMS RIVER BORO	09/04/2004	SATURDAY	2044	US 9	90.6	1 PEDESTRIAN
STAFFORD TWP	09/05/2004	SUNDAY	0815	PARKWAY	65.5	2 PASSENGERS
STAFFORD TWP	09/05/2004	SUNDAY	1245	SH 72	25.5	1 PASSENGER
DOVER TWP	09/05/2004	SUNDAY	1321	WASHINGTON ST	0.0	1 PEDESTRIAN
STAFFORD TWP	09/11/2004	SATURDAY	2026	MCKINLEY AVE	0.0	1 DRIVER
DOVER TWP	09/17/2004	FRIDAY	0029	CEDAR GROVE RD	0.0	1 DRIVER
DOVER TWP	09/18/2004	SATURDAY	0526	PARKWAY	87.4	1 DRIVER
DOVER TWP	10/03/2004	SUNDAY	1610	BEAVER HOLLOW DR	0.0	1 DRIVER
DOVER TWP	10/11/2004	MONDAY	2325	SH 37	11.2	1 PEDESTRIAN
LACEY TWP	10/12/2004	TUESDAY	1219	HARDWOOD DR	0.0	1 PEDESTRIAN
DOVER TWP	10/15/2004	FRIDAY	1633	CR 571	0.0	1 DRIVER
SO TOMS RIVER BORO	10/17/2004	SUNDAY	0208	CR 530	0.0	1 DRIVER
BARNEGAT TWP	10/19/2004	TUESDAY	1819	CR 554	0.0	1 DRIVER
MANCHESTER TWP	10/22/2004	FRIDAY	1022	SCHOOLHOUSE RD	0.0	1 DRIVER

JACKSON TWP	11/08/2004	MONDAY	1522	HYSON RD	0.0	1 PASSENGER
BRICK TWP	11/16/2004	TUESDAY	1907	CR 549	0.0	1 PEDESTRIAN
MANCHESTER TWP	11/29/2004	MONDAY	1155	SH 70	45.2	1 DRIVER
DOVER TWP	12/08/2004	WEDNESDAY	1053	SH 37	3.4	1 DRIVER
LAKEHURST BORO	12/09/2004	THURSDAY	1644	SH 70	44.5	1 PASSENGER
DOVER TWP	12/11/2004	SATURDAY	0417	PARKWAY	83.5	1 PASSENGER
STAFFORD TWP	12/16/2004	THURSDAY	1424	US 9	72.9	1 DRIVER
MANCHESTER TWP	12/19/2004	SUNDAY	0732	SH 70	34.0	1 DRIVER
BARNEGAT TWP	12/19/2004	SUNDAY	1134	SH 72	16.5	1 DRIVER, 1 PASSENGER
DOVER TWP	12/20/2004	MONDAY	2021	PARKWAY	83.7	1 DRIVER
LACEY TWP	12/24/2004	FRIDAY	1302	PARKWAY	74.9	1 DRIVER
LAKEWOOD TWP	12/24/2004	FRIDAY	1730	SH 88	2.0	1 DRIVER
PT PLEASANT BORO	12/26/2004	SUNDAY	0123	SH 88	8.4	1 PASSENGER
MANCHESTER TWP	12/27/2004	MONDAY	0256	CR 571	0.0	1 DRIVER
BRICK TWP	12/28/2004	TUESDAY	0919	CR 528	0.0	1 DRIVER

PASSAIC COUNTY

MUNICIPALITY	DATE	DAY	TIME	ROADWAY	MP	PERSONS KILLED
PATERSON CITY	01/08/2004	THURSDAY	1126	MARKET ST	0.0	1 PEDESTRIAN
WAYNE TWP	01/21/2004	WEDNESDAY	1111	WILLOWBROOK BLVD	0.0	1 PASSENGER
PATERSON CITY	02/16/2004	MONDAY	0345	SH 20	4.1	1 DRIVER
WEST MILFORD TWP	02/19/2004	THURSDAY	2316	SH 23	0.0	1 DRIVER
PASSAIC CITY	03/09/2004	TUESDAY	1338	MAIN AVE	0.0	1 PEDESTRIAN
WEST MILFORD TWP	03/25/2004	THURSDAY	1139	WARWICK TPK	0.0	1 DRIVER
PATERSON CITY	04/10/2004	SATURDAY	2330	15TH AVE	0.0	1 DRIVER
WEST MILFORD TWP	04/28/2004	WEDNESDAY	1647	UNION VALLEY RD	0.0	1 DRIVER
PATERSON CITY	05/19/2004	WEDNESDAY	1252	E 18TH ST	0.0	1 PEDESTRIAN
WEST MILFORD TWP	05/20/2004	THURSDAY	1457	UNION VALLEY RD	0.0	1 PASSENGER
CLIFTON CITY	06/12/2004	SATURDAY	2135	KULLER RD	0.0	1 DRIVER
PATERSON CITY	06/13/2004	SUNDAY	0245	CHADWICK ST	0.0	1 PEDESTRIAN
CLIFTON CITY	06/14/2004	MONDAY	1610	US 46	0.0	1 DRIVER
CLIFTON CITY	06/17/2004	THURSDAY	0021	LAKEVIEW AVE	0.0	1 DRIVER
PATERSON CITY	06/20/2004	SUNDAY	1715	PATERSON AVE	0.0	1 DRIVER
CLIFTON CITY	06/25/2004	FRIDAY	2323	CROOKS RD	0.0	1 PEDESTRIAN
PATERSON CITY	07/05/2004	MONDAY	0221	SH 20	0.0	1 DRIVER, 2 PASSENGERS
CLIFTON CITY	07/10/2004	SATURDAY	2135	PARKWAY	155.2	1 DRIVER
PATERSON CITY	08/22/2004	SUNDAY	1942	SH 20	0.0	1 DRIVER
PATERSON CITY	09/01/2004	WEDNESDAY	0654	GETTY AVE	0.0	1 PEDESTRIAN
WEST MILFORD TWP	10/15/2004	FRIDAY	0840	SH 23	20.4	1 DRIVER
PATERSON CITY	12/15/2004	WEDNESDAY	0937	BELMONT AVE	0.0	1 PEDESTRIAN
CLIFTON CITY	12/17/2004	FRIDAY	1541	MAIN AVENUE	0.0	1 PEDESTRIAN
PASSAIC CITY	12/18/2004	SATURDAY	2252	SH 21	12.4	1 DRIVER
CLIFTON CITY	12/23/2004	THURSDAY	0309	SH 3	0.0	1 PEDESTRIAN

SALEM COUNTY

MUNICIPALITY	DATE	DAY	TIME	ROADWAY	MP	PERSONS KILLED
OLDSMAN TWP	03/21/2004	SUNDAY	1040	CR 644	0.0	1 DRIVER
UPPER PITTSBORO TWP	03/25/2004	THURSDAY	1448	CR 611	0.0	1 DRIVER, 1 PASSENGER
ALLOWAY TWP	04/13/2004	TUESDAY	1508	CR 581	0.0	1 DRIVER
UPPER PITTSBORO TWP	05/31/2004	MONDAY	0025	CR 671	0.0	2 PASSENGERS
MANNINGTON TWP	07/09/2004	FRIDAY	1331	CR 540	0.0	2 DRIVERS
CARNEYS POINT TWP	08/08/2004	SUNDAY	2140	SHELL RD	0.0	1 DRIVER
CARNEYS POINT TWP	08/16/2004	MONDAY	0319	CR 540	0.0	1 DRIVER, 1 PASSENGER
PITTSBORO TWP	08/24/2004	TUESDAY	1016	US 40	23.6	1 DRIVER
OLDSMAN TWP	08/25/2004	WEDNESDAY	0326	I-295	6.2	1 DRIVER
MANNINGTON TWP	09/22/2004	WEDNESDAY	2037	SH 45	3.3	1 DRIVER
MANNINGTON TWP	10/10/2004	SUNDAY	0105	CR 540	0.0	1 DRIVER
CARNEYS POINT TWP	10/16/2004	SATURDAY	2313	E QUILLYTOWN RD	0.0	1 DRIVER, 1 PASSENGER
UPPER PITTSBORO TWP	11/15/2004	MONDAY	1159	US 40	20.5	1 DRIVER
PILESBORO TWP	11/28/2004	SUNDAY	1307	US 40	8.2	2 DRIVERS, 1 PASSENGER
OLDSMAN TWP	12/17/2004	FRIDAY	0732	I-295	8.2	1 DRIVER
QUINTON TWP	12/24/2004	FRIDAY	0007	WATERWORKS RD	0.0	1 DRIVER
ALLOWAY TWP	12/26/2004	SUNDAY	1348	CR 657	0.0	1 DRIVER

SOMERSET COUNTY

MUNICIPALITY	DATE	DAY	TIME	ROADWAY	MP	PERSONS KILLED
BERNARDS TWP	01/11/2004	SUNDAY	0058	I-287	26.5	1 DRIVER
BRIDGEWATER TWP	01/11/2004	SUNDAY	0702	CR 675	0.0	1 DRIVER
WARREN TWP	04/11/2004	SUNDAY	1404	I-78	35.5	1 PASSENGER
SOMERVILLE BORO	05/18/2004	TUESDAY	2155	SH 28	3.2	1 PEDESTRIAN
FRANKLIN TWP	06/04/2004	FRIDAY	0228	BENNETTS LA	0.0	1 DRIVER
FRANKLIN TWP	07/03/2004	SATURDAY	0110	SH 27	11.0	1 DRIVER
BERNARDS TWP	07/04/2004	SUNDAY	1539	NORTH MAPLE AVE	0.0	1 DRIVER
BRIDGEWATER TWP	07/12/2004	MONDAY	1011	I-287	13.8	1 PASSENGER
FRANKLIN TWP	08/19/2004	THURSDAY	0556	CR 514	0.0	1 PASSENGER
BRIDGEWATER TWP	08/24/2004	TUESDAY	1726	I-78	31.7	1 DRIVER
WATCHUNG BORO	08/26/2004	THURSDAY	1527	CR 655	0.0	1 DRIVER
NO PLAINFIELD BORO	09/03/2004	FRIDAY	2243	US 22	45.8	1 DRIVER
FRANKLIN TWP	10/20/2004	WEDNESDAY	1052	CR 623	0.0	1 DRIVER
NO PLAINFIELD BORO	11/03/2004	WEDNESDAY	0256	SH 22	43.8	1 DRIVER
BRIDGEWATER TWP	11/18/2004	THURSDAY	0215	CR 533	0.0	1 PEDESTRIAN
WATCHUNG BORO	11/28/2004	SUNDAY	0100	CR 653	0.0	1 DRIVER
HILLSBOROUGH TWP	12/07/2004	TUESDAY	1629	OLD CAMPLAIN RD	0.0	1 PEDESTRIAN
MONTGOMERY TWP	12/26/2004	SUNDAY	2247	CR 630	0.0	1 DRIVER

SUSSEX COUNTY

MUNICIPALITY	DATE	DAY	TIME	ROADWAY	MP	PERSONS KILLED
SANDYSTON TWP	01/08/2004	THURSDAY	0107	US 206	121.5	1 DRIVER
FRANKFORD TWP	01/09/2004	FRIDAY	1540	PLAINS RD	0.0	1 DRIVER
FRANKFORD TWP	01/24/2004	SATURDAY	0240	CR 519	0.0	1 DRIVER, 1 PASSENGER
HAMPTON TWP	02/18/2004	WEDNESDAY	1700	US 206	110.7	1 PEDESTRIAN
HAMPTON TWP	02/28/2004	SATURDAY	1647	CR 626	0.0	1 DRIVER
VERNON TWP	03/24/2004	WEDNESDAY	0142	SH 94	40.7	1 DRIVER
SUSSEX BORO	05/08/2004	SATURDAY	1711	WALNUT ST	0.0	1 PASSENGER
HAMPTON TWP	07/10/2004	SATURDAY	1729	CR 521	0.0	1 DRIVER
VERNON TWP	07/11/2004	SUNDAY	1412	SH 94	42.4	1 DRIVER
FRANKFORD TWP	07/22/2004	THURSDAY	2106	SH 15	19.4	1 DRIVER
HOPATCONG BORO	08/07/2004	SATURDAY	0413	MONROE TRAIL	0.0	1 DRIVER
VERNON TWP	08/09/2004	MONDAY	1720	SH 94	37.9	1 BICYCLIST
MONTAGUE TWP	08/21/2004	SATURDAY	1557	CR 653	0.0	1 DRIVER
SANDYSTON TWP	08/28/2004	SATURDAY	1508	US 206	127.8	1 DRIVER
FRANKFORD TWP	09/09/2004	THURSDAY	0905	US 206	113.8	1 DRIVER
VERNON TWP	09/26/2004	SUNDAY	2137	CR 644	0.0	1 DRIVER
BYRAM TWP	10/01/2004	FRIDAY	2117	CHESTNUT ST	0.0	1 DRIVER
GREEN TWP	10/13/2004	WEDNESDAY	1152	CR 517	0.0	1 DRIVER
LAFAYETTE TWP	10/30/2004	SATURDAY	1740	SH 15	16.5	1 DRIVER
SANDYSTON TWP	11/10/2004	WEDNESDAY	1957	US 206	123.0	1 DRIVER

UNION COUNTY

MUNICIPALITY	DATE	DAY	TIME	ROADWAY	MP	PERSONS KILLED
ELIZABETH CITY	01/17/2004	SATURDAY	2232	US 1 & 9	44.2	1 DRIVER, 1 PASSENGER
NEW PROVIDENCE BORO	01/23/2004	FRIDAY	2021	UNION AVE	0.0	1 DRIVER
PLAINFIELD CITY	01/25/2004	SUNDAY	1409	CR 531	0.0	1 DRIVER
CRANFORD TWP	01/30/2004	FRIDAY	0240	PARKWAY	138.9	1 PEDESTRIAN
ELIZABETH CITY	02/02/2004	MONDAY	0455	SH 27	38.4	1 PEDESTRIAN
LINDEN CITY	02/08/2004	SUNDAY	1929	CLARK ST	0.0	1 PASSENGER
ROSELLE BORO	02/21/2004	SATURDAY	2242	SH 27	31.1	1 DRIVER, 1 PASSENGER
LINDEN CITY	02/23/2004	MONDAY	1029	SH 27	29.9	1 DRIVER
ELIZABETH CITY	02/26/2004	THURSDAY	1006	DICKINSON ST	0.0	1 PEDESTRIAN
ELIZABETH CITY	02/27/2004	FRIDAY	1614	TURNPIKE	99.9	1 PEDESTRIAN
UNION TWP	03/14/2004	SUNDAY	0148	PARKWAY	142.3	1 PEDESTRIAN
HILLSIDE TWP	03/21/2004	SUNDAY	1704	RIVERSIDE DR	0.0	1 PASSENGER
ELIZABETH CITY	03/28/2004	SUNDAY	0142	US 1 & 9	45.4	1 DRIVER
ELIZABETH CITY	04/04/2004	SUNDAY	0430	SH 28	26.4	1 DRIVER
ELIZABETH CITY	04/23/2004	FRIDAY	2031	TURNPIKE	99.4	1 PEDESTRIAN
ELIZABETH CITY	05/09/2004	SUNDAY	0052	US 1 & 9	45.4	1 DRIVER
ELIZABETH CITY	05/09/2004	SUNDAY	2325	US 1 & 9	45.1	1 PEDESTRIAN

ELIZABETH CITY	05/23/2004	SUNDAY	2129	US 1 & 9	43.0	1 PEDESTRIAN
ROSELLE PARK BORO	05/24/2004	MONDAY	0417	BENDER AVE	0.0	1 DRIVER
ELIZABETH CITY	05/29/2004	SATURDAY	0320	US 1	43.3	1 PEDESTRIAN
LINDEN CITY	06/04/2004	FRIDAY	1912	LOWER RD	0.0	1 DRIVER
ELIZABETH CITY	06/07/2004	MONDAY	0626	PENNSYLVANIA AVE	0.0	1 PEDESTRIAN
LINDEN CITY	06/13/2004	SUNDAY	2038	US 1	40.2	1 DRIVER
CRANFORD TWP	06/14/2004	MONDAY	1534	LINCOLN AVE WEST	0.0	1 BICYCLIST
RAHWAY CITY	06/19/2004	SATURDAY	0350	SH 35	58.0	1 DRIVER
RAHWAY CITY	06/26/2004	SATURDAY	1339	US 1	38.8	1 PEDESTRIAN
SPRINGFIELD TWP	07/05/2004	MONDAY	0557	SH 24	10.2	1 PEDESTRIAN
CRANFORD TWP	07/07/2004	WEDNESDAY	2356	PARKWAY	139.2	1 PEDESTRIAN
SPRINGFIELD TWP	07/18/2004	SUNDAY	0104	US 22	52.6	1 DRIVER
HILLSIDE TWP	07/29/2004	THURSDAY	1201	I-78	54.0	1 DRIVER
ELIZABETH CITY	08/03/2004	TUESDAY	0639	DIVISION ST	0.0	1 PASSENGER
ROSELLE PARK BORO	08/09/2004	MONDAY	1621	SH 28	27.1	1 PEDESTRIAN
UNION TWP	09/25/2004	SATURDAY	1940	US 22	56.1	1 PEDESTRIAN
SPRINGFIELD TWP	09/26/2004	SUNDAY	1752	SH 24	10.2	1 DRIVER
ELIZABETH CITY	09/27/2004	MONDAY	2309	CR 514	0.0	1 PEDESTRIAN
UNION TWP	09/28/2004	TUESDAY	2155	SH 124	13.0	1 PEDESTRIAN
RAHWAY CITY	10/04/2004	MONDAY	1230	CR 608	0.0	1 PEDESTRIAN
ELIZABETH CITY	10/05/2004	TUESDAY	0519	EAST GRAND ST	0.0	1 PEDESTRIAN
LINDEN CITY	10/10/2004	SUNDAY	0056	SH 27	31.5	1 PEDESTRIAN
SUMMIT CITY	10/22/2004	FRIDAY	0700	I-78	46.6	1 DRIVER
PLAINFIELD CITY	11/14/2004	SUNDAY	0608	CR 531	0.0	1 PASSENGER
CRANFORD TWP	11/27/2004	SATURDAY	1722	CR 615	0.0	1 PEDESTRIAN
UNION TWP	12/04/2004	SATURDAY	0706	CR 509	0.0	1 DRIVER

WARREN COUNTY

MUNICIPALITY	DATE	DAY	TIME	ROADWAY	MP	PERSONS KILLED
KNOWLTON TWP	01/03/2004	SATURDAY	1640	I-80	9.1	1 DRIVER
FRANKLIN TWP	01/06/2004	TUESDAY	1711	CR 643	0.0	1 PEDESTRIAN
HOPE TWP	02/29/2004	SUNDAY	1344	I-80	11.5	1 DRIVER
HARDWICK TWP	04/04/2004	SUNDAY	1012	CR 521	0.0	1 DRIVER
HOPE TWP	04/14/2004	WEDNESDAY	2240	CR 519	0.0	1 DRIVER
POHATCONG TWP	06/12/2004	SATURDAY	1205	CR 519	0.0	1 DRIVER
WHITE TWP	06/28/2004	MONDAY	1419	CR 519	0.0	1 PASSENGER
LIBERTY TWP	07/30/2004	FRIDAY	1425	FREE UNION RD	0.0	1 DRIVER
WHITE TWP	08/01/2004	SUNDAY	1833	US 46	6.5	1 DRIVER
HARDWICK TWP	08/13/2004	FRIDAY	0501	I-80	1.0	1 DRIVER
WASHINGTON TWP	10/01/2004	FRIDAY	0800	SH 31	44.8	1 DRIVER
GREENWICH TWP	11/14/2004	SUNDAY	1050	SH 173	1.5	1 DRIVER, 1 PASSENGER
GREENWICH TWP	11/19/2004	FRIDAY	2318	SH 173	2.9	1 DRIVER
ALLAMUCHY TWP	12/09/2004	THURSDAY	0306	I-80	21.5	1 DRIVER
KNOWLTON TWP	12/13/2004	MONDAY	1750	I-80	7.6	1 DRIVER, 1 PEDESTRIAN

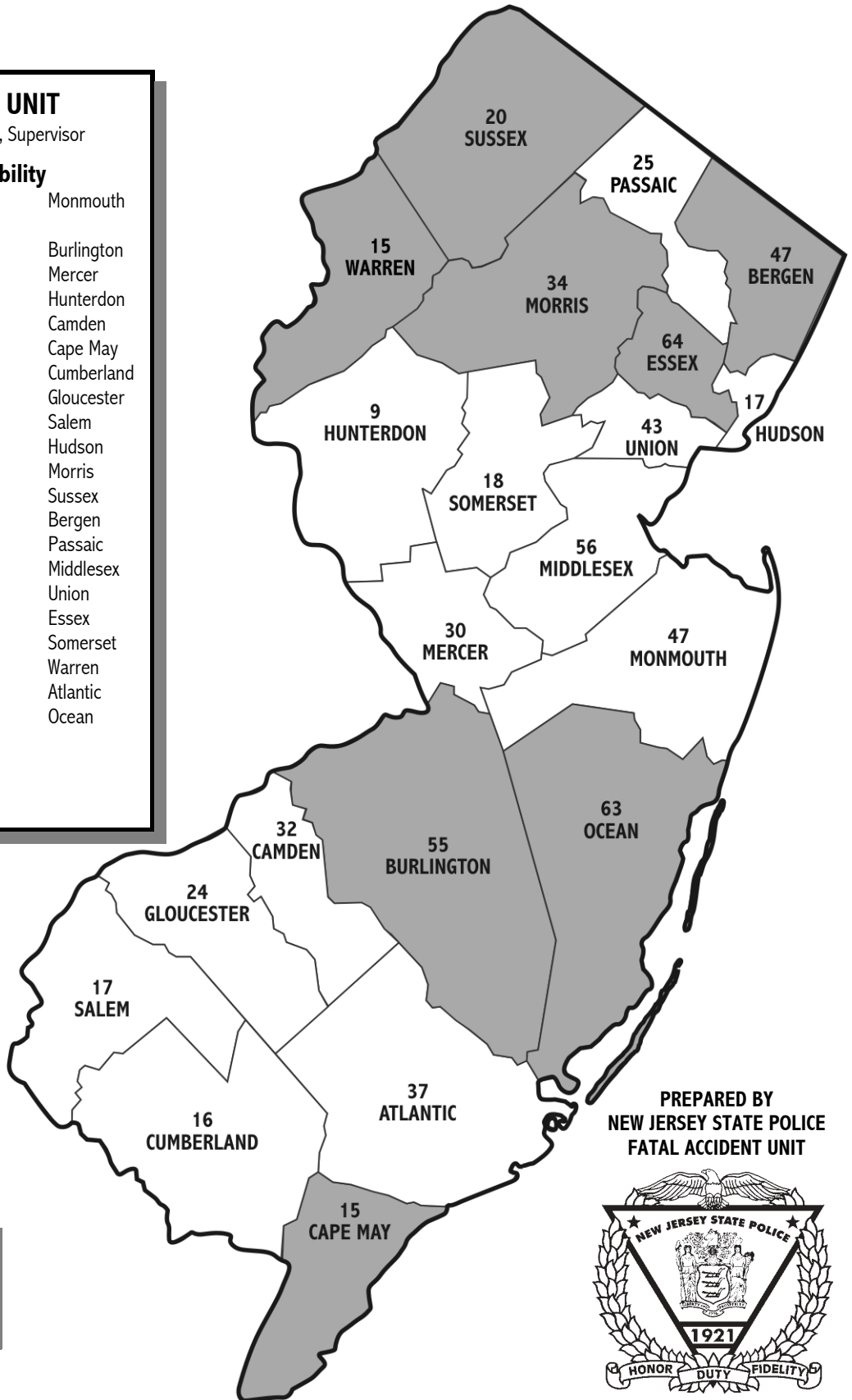
FATALITIES BY COUNTY FOR 2004

FATAL ACCIDENT UNIT

SFC Robert F. Parlow - 3563, Supervisor

Areas of Responsibility


Sgt. Eric Heitmann - 5066	Monmouth
Assistant Unit Supervisor	
Sgt. Robert Foulks - 5052	Burlington
Unit Data Coordinator	Mercer
	Hunterdon
	Camden
Sgt. John McMahon - 5380	Cape May
	Cumberland
	Gloucester
	Salem
Tpr.I Robert Babitz - 5332	Hudson
	Morris
	Sussex
Tpr.II John Sandner - 5644	Bergen
	Passaic
Tpr.II Steve Slimowicz - 5789	Middlesex
	Union
Tpr. Dave Perschy - 5880	Essex
	Somerset
	Warren
Tpr. Matthew Razukas - 5939	Atlantic
	Ocean
Civilian - Mrs. A.J.Testa	



PREPARED BY
NEW JERSEY STATE POLICE
FATAL ACCIDENT UNIT



LEGEND

Shaded Areas 
Denote Increase from 2003.