

2006

# FATAL MOTOR VEHICLE CRASH

COMPARATIVE DATA REPORT FOR THE STATE OF NEW JERSEY



COMPILED BY THE  
NEW JERSEY STATE POLICE  
FATAL ACCIDENT INVESTIGATION UNIT





JON S. CORZINE  
*Governor*

**State of New Jersey**  
OFFICE OF THE ATTORNEY GENERAL  
DEPARTMENT OF LAW AND PUBLIC SAFETY  
DIVISION OF STATE POLICE  
POST OFFICE BOX 7068  
WEST TRENTON NJ 08628-0068  
(609) 882-2000

ANNE MILGRAM  
*Attorney General*  
  
COLONEL JOSEPH R. FUENTES  
*Superintendent*

Dear Reader:

New Jersey continues to rank as one of the safest states in the nation. There were 708 fatal crashes and 770 fatalities in 2006. The New Jersey State Police is committed in its effort, through enforcement and education of the motoring public, to reduce the number of people killed in motor vehicle accidents.

Our efforts in reducing motor vehicle deaths on our roadways must continue, as highway fatalities are still a leading cause of death in New Jersey and the nation. The nationwide death toll of 42,642 people represents an average of more than 116 deaths per day.

On the following pages you will find statistics of the fatal motor vehicle accident records compiled by the Fatal Accident Investigation Unit of the Division of State Police for 2006. This report constitutes a detailed look at the causes and results of fatal accidents throughout the state during 2006. Hopefully, the continued efforts and cooperation of the public, federal, state, and local agencies will help us maintain our traffic safety record in the years ahead.

Sincerely,

Joseph R. Fuentes  
Colonel  
Superintendent



*New Jersey Is An Equal Opportunity Employer  
Printed on Recycled Paper and Recyclable*



# TABLE OF CONTENTS

## STATISTICAL SUMMARY

2006 Quick Facts . . . . .	1
2006 Motor Vehicle Fatal Crashes and Fatalities with a Comparison of the 1987-2006 Crashes and Fatalities . . . . .	2
A. Crash Victim Classification by Month . . . . .	3
B. Crashes and Fatalities by Month of Occurrence . . . . .	4
C. Crash Victim Classification by County . . . . .	4
D. Crashes by County of Occurrence and Roadway Classification . . . . .	5
E. Fatalities and Injuries According to Crash Type Classification . . . . .	6
F. Hours of Occurrence . . . . .	7
G. Weather Conditions . . . . .	7
H. Day of Occurrence . . . . .	8
I. Age of Driver Victims . . . . .	8
J. Age of Pedestrian Victims . . . . .	8
K. Sex of Pedestrians . . . . .	9
L. Condition of All Drivers . . . . .	9
M. Alcohol Factor . . . . .	10
Victim Alcohol Factor, 2002-2006 Comparison . . . . .	11
Victim Alcohol Factors for the Year 2006 . . . . .	11
N. Alcohol Involvement of Deceased Drivers Related to Manner of Collision . . . . .	12
O. Manner of Collision . . . . .	12
P. Type of Vehicles Involved (Including Parked) . . . . .	13
Q. Character of Road . . . . .	14
R. Road Designation . . . . .	14
S. Age of Drivers . . . . .	15
T. Sex of Drivers . . . . .	15
U. What Drivers Were Doing . . . . .	16
V. What Pedestrians Were Doing . . . . .	16
W. Contributing Circumstances . . . . .	17

## SPECIFIC AREAS OF CONCERN

Interstate Highway Fatalities . . . . .	19
Pedalcycle Crashes . . . . .	20
Motorcycle Crashes . . . . .	21
Tractor-Trailer Crashes . . . . .	22
Restraint Usage . . . . .	23
17 - 20 Age Group . . . . .	24
Fatal Crashes and Persons Killed for Selected Holiday Periods . . . . .	25
Ten Year Experience . . . . .	26
Fatal Crash Investigation Summary by Troop . . . . .	27
Fatal Crashes by County, Municipality, Date, Time and Location . . . . .	31
Map - Fatalities by County . . . . .	43

# QUICK FACTS

- Nationwide, the fatality rate remained at a historic low of 1.42 fatalities per hundred million vehicle miles traveled.
- Nationwide preliminary statistics indicate there were 42,642 people killed.
- In New Jersey, there were 708 fatal crashes with 770 people killed.
- There was an increase of 17 fatal crashes and an increase of 22 fatalities.
- Of the fatalities, 31.2 % had consumed alcohol to some extent.
- Of all drivers, 13.9 % were legally intoxicated.
- An average of 2.11 persons were killed every day.
- There were 98 fatal crashes involving 103 motorcycles.
- Pedalcyclists accounted for 12 fatal crashes.
- The pedestrian death toll was 166.
- There were a total of 34 hit and run fatal crashes involving 56 vehicles. The victims were comprised of 3 drivers, 3 passengers, 27 pedestrians and 2 pedalcyclists.
- Of the 1087 drivers listed, 47 New Jersey drivers and 5 out-of-state drivers were suspended. There were 10 drivers without valid licenses.
- There are 38,123 miles of public open roads in the state of New Jersey, indicating one death for every 49.5 miles.
- Straight roads were involved in 62.9 % of all fatal crashes.
- Of all fatal crashes, 82.6 % occurred during clear weather conditions.
- Of the known drivers involved in fatal crashes, 71.3 % were males.
- Of the vehicles involved in fatal crashes, 52.2 % involved passenger cars.
- There were 50 tractor-trailers involved in 45 fatal crashes which resulted in 53 fatalities.

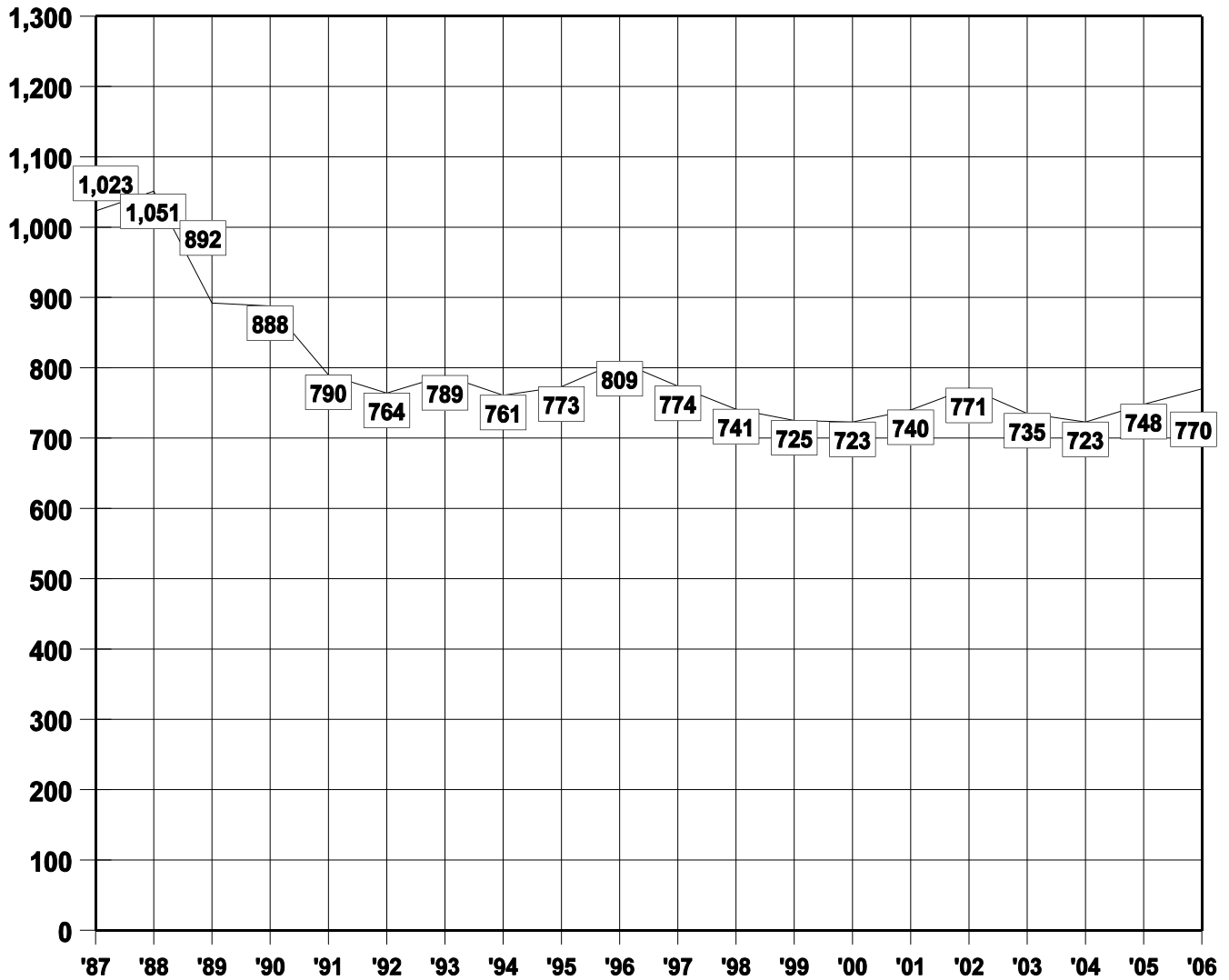
# SUBJECT

Statistical Summary of 2006 Motor Vehicle Fatal Crashes and Fatalities with a Comparison of the 2002-2006 Crashes and Fatalities.

Statistics	2002	2003	2004	2005	2006
Fatal Crashes	699	666	684	691	708
Fatalities	771	735	723	748	770

## TREND IN FATALITIES

20 Year Trend



## A. VICTIM CLASSIFICATION BY MONTH - 2006

Month	Driver	Passenger	Pedalcyclist	Pedestrian	Totals
January	31	12	1	25	69
February	26	6	0	10	42
March	38	12	0	13	63
April	35	24	0	7	66
May	42	15	2	13	72
June	26	7	1	8	42
July	45	13	2	12	72
August	41	13	1	11	66
September	39	19	3	15	76
October	38	9	1	19	67
November	31	15	0	17	63
December	38	17	1	16	72
<b>Totals</b>	<b>430</b>	<b>162</b>	<b>12</b>	<b>166</b>	<b>770</b>

## B. CRASHES AND FATALITIES BY MONTH OF OCCURRENCE

Month	Crashes					Fatalities				
	2002	2003	2004	2005	2006	2002	2003	2004	2005	2006
January	69	56	49	46	63	74	60	52	49	69
February	50	43	47	31	40	52	46	49	33	42
March	52	47	45	52	60	55	51	48	59	63
April	54	47	44	56	59	61	50	44	59	66
May	43	54	58	50	67	48	70	60	51	72
June	65	76	64	73	40	73	88	66	76	42
July	62	56	62	60	67	72	59	68	66	72
August	54	72	65	57	61	59	81	67	65	66
September	75	53	64	70	69	82	56	69	72	76
October	76	59	69	70	64	86	64	76	74	67
November	48	57	55	68	55	51	60	58	78	63
December	51	46	62	58	63	58	50	66	66	72
<b>TOTAL</b>	<b>699</b>	<b>666</b>	<b>684</b>	<b>691</b>	<b>708</b>	<b>771</b>	<b>735</b>	<b>723</b>	<b>748</b>	<b>770</b>

## C. CRASH VICTIM CLASSIFICATION BY COUNTY

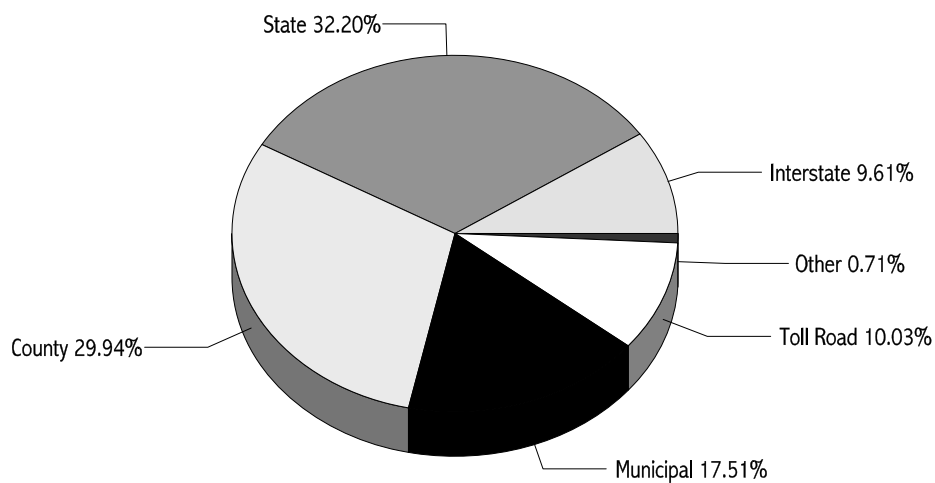
County	Victim Classification					
	Crashes	Killed	Driver	Passenger	Pedestrian	Pedalcyclist
Atlantic	53	57	37	10	9	1
Bergen	39	43	18	10	15	0
Burlington	45	47	35	7	5	0
Camden	45	47	33	6	8	0
Cape May	14	15	10	4	1	0
Cumberland	26	29	19	5	4	1
Essex	50	52	20	14	18	0
Gloucester	34	37	24	6	7	0
Hudson	29	30	15	10	5	0
Hunterdon	16	18	11	4	2	1
Mercer	32	33	15	11	5	2
Middlesex	63	69	32	14	23	0
Monmouth	44	48	27	11	9	1
Morris	32	40	17	11	11	1
Ocean	60	62	35	10	16	1
Passaic	31	32	16	5	11	0
Salem	14	19	10	7	2	0
Somerset	19	20	14	1	4	1
Sussex	17	20	16	4	0	0
Union	32	36	15	8	10	3
Warren	13	16	11	4	1	0
<b>TOTAL</b>	<b>708</b>	<b>770</b>	<b>430</b>	<b>162</b>	<b>166</b>	<b>12</b>

## D. CRASHES BY COUNTY OF OCCURRENCE AND ROADWAY CLASSIFICATION

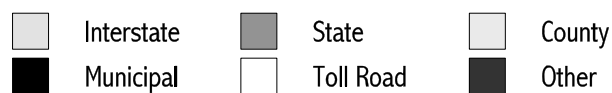
County	Interstate	State	County	Municipal	Toll Roads	Other	TOTALS
Atlantic	0	22	13	10	8	0	53
Bergen	2	8	15	6	8	0	39
Burlington	8	16	15	4	1	1	45
Camden	5	18	14	3	5	0	45
Cape May	0	5	5	1	3	0	14
Cumberland	0	8	15	3	0	0	26
Essex	5	6	14	17	5	3	50
Gloucester	3	17	9	2	3	0	34
Hudson	1	5	8	12	3	0	29
Hunterdon	7	5	2	2	0	0	16
Mercer	6	9	7	8	2	0	32
Middlesex	0	28	13	10	11	1	63
Monmouth	3	13	10	12	6	0	44
Morris	13	7	8	4	0	0	32
Ocean	0	12	26	9	13	0	60
Passaic	2	11	10	7	1	0	31
Salem	1	1	10	1	1	0	14
Somerset	7	4	4	4	0	0	19
Sussex	0	6	8	3	0	0	17
Union	4	22	0	5	1	0	32
Warren	1	5	6	1	0	0	13
<b>TOTAL</b>	<b>68</b>	<b>228</b>	<b>212</b>	<b>124</b>	<b>71</b>	<b>5</b>	<b>708</b>

NOTE: US roadways are included in the State Highway column. Other roadways include State, County and Municipal Parks and Institutions and US Government Property.

### *Breakdown in Percentages of 708 Accidents during 2006*



Percent distribution may not add to 100.0 due to rounding.





## E. FATALITIES AND INJURIES ACCORDING TO CRASH TYPE CLASSIFICATION

Type	Total Crashes						Total Fatalities						Total Injured					
	2002	2003	2004	2005	2006		2002	2003	2004	2005	2006		2002	2003	2004	2005	2006	
Pedestrian	169	136	148	151	162		176	137	152	155	166		34	38	31	19	33	
Other Motor Vehicle	260	284	274	266	279		302	330	297	298	315		410	451	474	457	422	
Railroad Train	0	3	4	1	3		0	3	5	2	4		0	0	0	0	0	
Parked Vehicle	12	9	11	14	13		13	9	11	15	14		10	7	10	5	10	
Pedalcycle	15	11	16	17	12		15	11	16	17	12		3	1	2	1	6	
Animal	1	2	1	1	1		1	2	0	1	1		0	0	0	0	0	
Fixed/Other Object	211	205	205	209	202		230	227	217	227	218		103	160	109	121	91	
Non-Collision	31	15	25	31	34		34	15	25	32	38		16	16	18	27	34	
Other	0	1	0	1	2		0	1	0	1	2		0	1	0	1	0	
<b>TOTAL</b>	<b>699</b>	<b>666</b>	<b>684</b>	<b>691</b>	<b>708</b>		<b>771</b>	<b>735</b>	<b>723</b>	<b>748</b>	<b>770</b>		<b>576</b>	<b>674</b>	<b>644</b>	<b>631</b>	<b>596</b>	

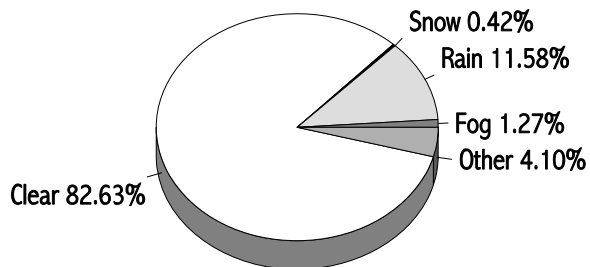
In 2006 there were 708 fatal crashes in which 770 persons were killed and 596 persons injured.

## F. HOURS OF OCCURRENCE

Time Of Occurrence	2002	2003	2004	2005	2006
12:00 to 12:59 a.m.	34	38	26	31	36
1:00 to 1:59 a.m.	37	32	30	30	25
2:00 to 2:59 a.m.	30	28	32	31	24
3:00 to 3:59 a.m.	25	15	27	24	34
4:00 to 4:59 a.m.	12	12	20	12	12
5:00 to 5:59 a.m.	21	17	21	21	19
6:00 to 6:59 a.m.	23	21	25	20	21
7:00 to 7:59 a.m.	24	24	14	39	16
8:00 to 8:59 a.m.	24	27	20	16	20
9:00 to 9:59 a.m.	27	16	18	30	12
10:00 to 10:59 a.m.	20	23	28	24	26
11:00 to 11:59 a.m.	23	32	29	20	30
12:00 to 12:59 p.m.	26	23	29	33	16
1:00 to 1:59 p.m.	37	30	24	31	28
2:00 to 2:59 p.m.	36	36	37	24	38
3:00 to 3:59 p.m.	28	45	26	27	38
4:00 to 4:59 p.m.	24	33	38	32	30
5:00 to 5:59 p.m.	35	38	49	30	37
6:00 to 6:59 p.m.	49	38	31	32	39
7:00 to 7:59 p.m.	31	28	36	39	39
8:00 to 8:59 p.m.	27	18	34	40	46
9:00 to 9:59 p.m.	37	32	37	41	42
10:00 to 10:59 p.m.	36	26	24	35	43
11:00 to 11:59 p.m.	33	34	29	29	37
<b>TOTAL</b>	<b>699</b>	<b>666</b>	<b>684</b>	<b>691</b>	<b>708</b>

## G. WEATHER CONDITIONS

Clear	585
Rain	82
Snow	3
Fog	9
Other	29
<b>Total</b>	<b>708</b>



Percent distribution may not add to 100.0 due to rounding.

## H. DAY OF OCCURRENCE

Day of Occurrence	2002	2003	2004	2005	2006
Sunday	109	89	127	115	127
Monday	80	92	83	78	89
Tuesday	99	88	64	74	87
Wednesday	92	98	85	93	89
Thursday	99	96	93	102	93
Friday	119	98	129	118	120
Saturday	101	105	103	111	103
<b>TOTAL</b>	<b>699</b>	<b>666</b>	<b>684</b>	<b>691</b>	<b>708</b>

## I. AGE OF DRIVER VICTIMS

Age Of Driver	Number Killed				
	2002	2003	2004	2005	2006
16 and under	3	5	2	4	2
Age 17	9	10	6	12	13
18 - 20	44	31	40	30	33
21 - 24	49	42	46	48	58
25 - 29	37	40	42	46	46
30 - 39	68	69	79	78	68
40 - 49	57	71	62	59	68
50 - 64	52	75	77	81	69
65 and older	99	73	70	69	72
Unknown	1	0	1	0	1
<b>TOTAL</b>	<b>419</b>	<b>416</b>	<b>425</b>	<b>427</b>	<b>430</b>

## J. AGE OF PEDESTRIAN VICTIMS

Age Of Pedestrian	Number Killed				
	2002	2003	2004	2005	2006
0 - 4	4	2	2	5	2
5 - 9	6	1	2	0	3
10 - 14	5	1	7	2	5
15 - 19	5	3	12	6	6
20 - 24	8	11	6	8	6
25 - 44	43	34	44	45	56
45 - 64	48	45	39	51	53
65 - 74	26	15	16	11	7
75 and older	29	22	23	25	28
Unknown	2	3	0	1	0
<b>TOTAL</b>	<b>176</b>	<b>137</b>	<b>151</b>	<b>154</b>	<b>166</b>

## K. SEX OF PEDESTRIANS

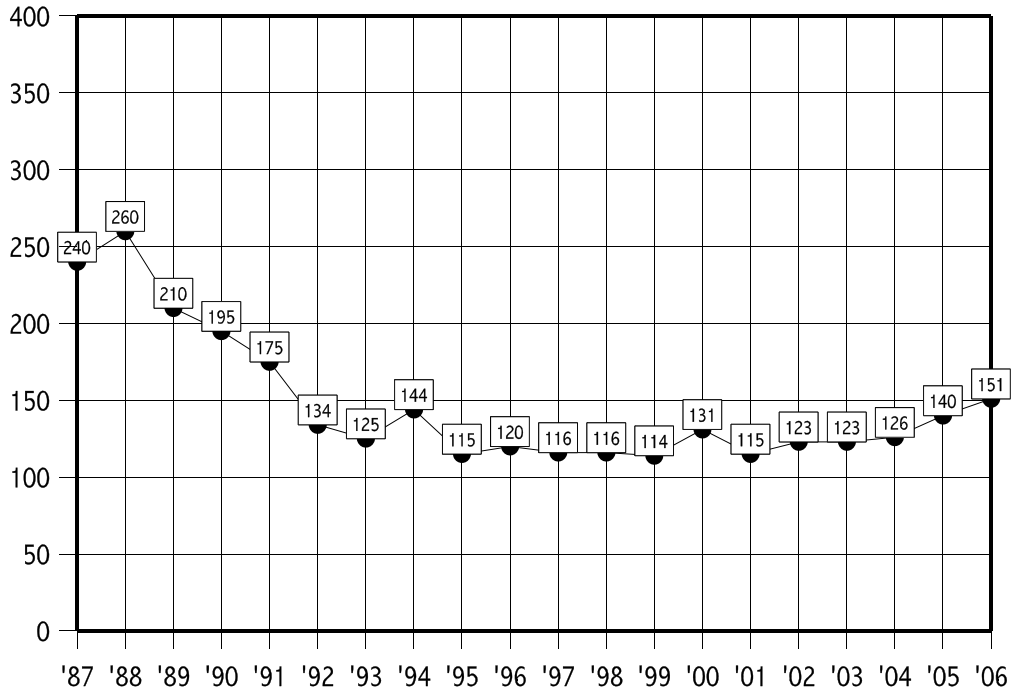
Sex	2002	2003	2004	2005	2006
Male	119	96	93	88	123
Female	57	41	58	66	43
<b>TOTAL</b>	<b>176</b>	<b>137</b>	<b>151</b>	<b>154</b>	<b>166</b>

## L. CONDITION OF ALL DRIVERS

Condition	Drivers
Unknown	55
Apparently Normal	771
Alcohol Use	156
Drug Use (Illicit)	28
Medication	17
Alcohol & Drug/Medication Use	26
Physical Handicaps	3
Illness	14
Fatigue	5
Fell Asleep	9
Other	3
<b>TOTAL</b>	<b>1,087</b>

## 20 YEAR TREND

*Intoxicated Drivers Involved in Fatal Accidents*



## M. ALCOHOL FACTOR

There were 770 fatalities during 2006. Of the fatalities, 430 were drivers, 162 were passengers, 166 were pedestrians and 12 were pedalcyclists. Of this total, 627 were tested for alcohol and 143 were not tested. Of the 627 tested, 240 were positive for alcohol in varying degrees and 387 were negative. This indicates that 38.3 % of the fatalities tested were positive for alcohol and 61.7 % were negative. Seventy-Four drivers, 23 passengers, 25 pedestrians and 1 pedalcyclist tested positive for drugs.

In 165 of the 708 crashes, Driving While Intoxicated (alcohol and/or drugs) was listed as the major contributing factor. There were 185 people killed as a result of these 165 crashes.

### 1.) DRIVERS:

**Deceased:** There were a total of 430 drivers killed of which 367 were tested for alcohol. Of those tested, 145 were positive and 222 were negative, indicating 39.5 % had consumed an alcoholic beverage. Of the 145 imbibing drivers, 109 or 75.2 % had an alcohol level of .08 % or higher.

**Surviving:** There were a total of 654 surviving drivers of which 237 were tested for alcohol. Of those tested, 53 were positive and 184 were negative, indicating 22.4 % had consumed an alcoholic beverage. Of the 53 imbibing drivers, 42 or 79.2 % had an alcohol level of .08 % or higher.

2.) **Passengers:** There were a total of 162 passengers killed of which 111 were tested for alcohol. Of those tested, 30 were positive and 81 were negative, indicating 27.0 % had consumed an alcoholic beverage.

3.) **Pedestrians:** There were a total of 166 pedestrians killed of which 137 were tested for alcohol. Of those tested, 60 were positive and 77 were negative, indicating 43.8 % had consumed an alcoholic beverage.

4.) **Pedalcyclists:** There were a total of 12 pedalcyclists killed of which 12 were tested for alcohol. Of those tested, 5 were positive and 7 were negative, indicating 41.7 % had consumed an alcoholic beverage.

### SURVIVING DRIVER ALCOHOL FACTORS

	.01% - .03%	.04% - .07%	.08% - .10%	.11% & over	Negative	No test	Total
<b>Drivers</b>	7	4	10	32	184	417	<b>654</b>

### EVALUATION:

2006 showed a 17.1 % increase in alcohol-related fatalities. The number of fatal accident victims with blood alcohol readings above the legal limit increased from 160 in 2005 to 180 in 2006, an increase of 12.5 %. Deceased drivers with alcohol involvement showed a 19.8 % increase when compared to 2005.

### ALCOHOL & DRUG USE:

10 surviving drivers, 34 deceased drivers, 10 passengers, 12 pedestrians and 0 pedalcyclists tested positive for alcohol and drugs (Illicit & Medication).

21 surviving drivers, 40 deceased drivers, 13 passengers, 13 pedestrians and 0 pedalcyclists tested positive for drugs (Illicit & Medication) alone.

**VICTIM ALCOHOL FACTOR 2002 - 2006 COMPARISON**

Due to the Blood Alcohol Content (BAC) threshold changing in 2004, the values prior to 2004 are not shown. Please see prior year's reports for these values.

	.01% - .03%				.04% - .07%				.08% - .10%							
	2002	2003	2004	2005	2006	2002	2003	2004	2005	2006	2002	2003	2004	2005	2006	
<b>Drivers</b>			16	11	21			12	11	15			9	12	12	
<b>Passengers</b>			3	7	8			3	7	3			4	3	4	
<b>Pedestrians</b>			2	6	8			4	3	4			1	1	2	
<b>Pedalcyclists</b>			0	0	1			0	0	0			0	0	0	
<b>TOTAL</b>			<b>21</b>	<b>24</b>	<b>38</b>			<b>19</b>	<b>21</b>	<b>22</b>			<b>14</b>	<b>16</b>	<b>18</b>	
	<b>.11% and Over</b>										<b>No Test</b>				<b>TOTAL</b>	
	2002	2003	2004	2005	2006	2002	2003	2004	2005	2006	2002	2003	2004	2005	2006	
<b>Drivers</b>			80	87	97			228	222	222			53	51	63	
<b>Passengers</b>			15	25	15			52	53	81			43	45	51	
<b>Pedestrians</b>			33	29	46			77	85	77			20	18	29	
<b>Pedalcyclists</b>			3	3	4			9	12	7			2	2	0	
<b>TOTAL</b>			<b>131</b>	<b>144</b>	<b>162</b>			<b>366</b>	<b>372</b>	<b>387</b>			<b>118</b>	<b>116</b>	<b>143</b>	

There were 123 victims that tested positive for drugs.

**VICTIM ALCOHOL FACTORS FOR THE YEAR 2006**

	.01% - .03%	.04% - .07%	.08% - .10%	.11% & over	Negative	No Test	TOTAL
<b>Drivers</b>	21	15	12	97	222	63	<b>430</b>
<b>Passengers</b>	8	3	4	15	81	51	<b>162</b>
<b>Pedestrians</b>	8	4	2	46	77	29	<b>166</b>
<b>Pedalcyclists</b>	1	0	0	4	7	0	<b>12</b>
<b>TOTAL</b>	<b>38</b>	<b>22</b>	<b>18</b>	<b>162</b>	<b>387</b>	<b>143</b>	<b>770</b>

**LEGEND** NEGATIVE: Tested and found to be negative.

NO TEST: Because of delayed death, age factor, contamination of samples, and the failure on the part of some investigative agencies and medical examiners to cause a test to be performed on victims.

NOTE: Seventy-Four drivers, 23 passengers, 25 pedestrians and 1 pedalcyclist tested positive for drugs.

## N. ALCOHOL INVOLVEMENT OF DECEASED DRIVERS RELATED TO MANNER OF COLLISION

Manner of Collision	.01 - .07 %	.08 % and above	Alcohol & Drugs	Drugs Alone
Angle	2	5	3	1
Same Direction - Rear End	4	11	4	7
Opposite Direction - Head On/Angular	10	15	3	10
Opposite Direction - Left/U-Turn	1	2	2	3
Fixed Object	15	67	19	16
Pedestrian	0	0	0	0
Railroad Train	1	0	0	0
Pedalcycle	0	0	0	0
Struck Parked Vehicle	0	1	0	0
Overtuned	3	6	3	1
Other Object	0	0	0	0
Sideswipe	0	2	0	2
Encroachment	0	0	0	0
Animal	0	0	0	0
Backing	0	0	0	0
<b>TOTAL</b>	<b>36</b>	<b>109</b>	<b>34</b>	<b>40</b>

NOTE: Drivers that test positive for both alcohol and drug use are counted in both the appropriate BAC column and in the Alcohol / Drugs column.

## O. MANNER OF COLLISION

Manner of Collision - All Crashes	2002	2003	2004	2005	2006
Angle	118	138	113	116	58
Same Direction - Rear End	53	52	36	45	65
Opposite Direction - Head On/Angular	61	66	91	77	94
Opposite Direction - Left/U-Turn	11	12	11	13	37
Fixed Object	211	205	180	149	201
Pedestrian	169	136	148	151	162
Other*	71	50	94	129	33
Sideswipe	5	7	11	11	24
Overtuned					34
<b>TOTAL</b>	<b>699</b>	<b>666</b>	<b>684</b>	<b>691</b>	<b>708</b>

\* Other categories include - Struck Parked Vehicle, Backing, Encroachment, Animal, Pedalcycle, Other Object and Railroad Train.

NOTE: Starting with 2006, Overtuned Vehicles are tracked separately - they are included with "Other" in prior years.

## P. TYPE OF VEHICLES INVOLVED (Including Parked)

	Fatal Crashes				
	2002	2003	2004	2005	2006
Passenger Vehicle	676	627	622	608	593
Recreation Vehicle	0	0	1	0	0
Taxicab / Limo	7	5	3	2	8
Motorcycle	53	57	74	63	103
Moped	0	0	2	0	0
Pickup					97
Sport Utility Vehicle	196	203	215	239	175
Van	38	49	41	29	10
Fire / Rescue	0	0	0	1	1
Police Vehicle	4	2	4	1	5
Ambulance	3	1	1	2	0
Bus	10	8	8	12	7
School Bus	3	4	5	3	4
Single Unit 2-Axle	25	24	38	30	23
Single Unit 3-Axle	17	10	23	21	13
Truck / Trailer	1	14	5	4	3
Truck (Bobtail)	3	5	0	1	1
Semi-Trailer (Tractor-Trailer)	38	53	45	67	48
Doubles	2	2	0	1	2
Triples	0	0	0	0	0
Heavy Truck	0	4	3	2	2
Other	26	20	25	10	41
<b>TOTAL</b>	<b>1,102</b>	<b>1,088</b>	<b>1,115</b>	<b>1,096</b>	<b>1,136</b>

NOTE: Starting with 2006, Pickup Trucks and Sport Utility Vehicles are tracked separately. Both are included under "Sport Utility Vehicle" in prior years.



## Q. CHARACTER OF ROAD

Road Character	Fatal Crashes				
	2002	2003	2004	2005	2006
Straight and Level					355
Straight and Grade					78
Straight at Hillcrest					12
Curve and Level					94
Curve and Grade					61
Curve at Hillcrest					4
Intersection					104
<b>TOTAL</b>					<b>708</b>

NOTE: Starting with 2006, the Road Character categories were changed to reflect the current NJTR-1.

## R. ROAD DESIGNATION

Road Designation	Fatal Crashes				
	2002	2003	2004	2005	2006
Interstate					68
State					228
County					212
Municipal					124
Toll Roads					71
Other					5
<b>TOTAL</b>					<b>708</b>

NOTE: US roadways are included in the State Highway column. \*Other roadways include State, County and Municipal Parks and Institutions and US Government Property.

## S. AGE OF DRIVERS

Age of Driver	Fatal Crashes				
	2002	2003	2004	2005	2006
16 and under	4	6	6	7	7
Age 17	22	32	13	30	27
18 - 20	101	90	87	64	90
21 - 24	115	116	94	120	126
25 - 29	115	90	102	110	119
30 - 39	194	201	219	205	186
40 - 49	162	203	205	211	203
50 - 64	169	163	200	192	180
65 and over	149	126	126	121	133
Unknown*	56	47	47	43	16
<b>TOTAL</b>	<b>1,087</b>	<b>1,074</b>	<b>1,099</b>	<b>1,103</b>	<b>1,087</b>

## T. SEX OF DRIVERS

Sex of Driver	Fatal Crashes				
	2002	2003	2004	2005	2006
Male	790	782	789	784	775
Female	247	249	267	275	290
Unknown	50	43	43	44	22
<b>TOTAL</b>	<b>1,087</b>	<b>1,074</b>	<b>1,099</b>	<b>1,103</b>	<b>1,087</b>

\* Unknown includes hit-and-run and parked vehicle crashes where driver information is not known or applicable.

## U. WHAT DRIVERS WERE DOING

Driver Pre-Crash Action	Fatal Crashes				
	2002	2003	2004	2005	2006
Going Straight Ahead					814
Making Right Turn					8
Making Left Turn					57
Making U Turn					5
Starting From Parked					0
Starting In Traffic					8
Slowing or Stopping					14
Stopped in Traffic					33
Parking					0
Parked					11
Changing Lanes					33
Entering Traffic Lane					10
Backing					2
Driverless / Moving					1
Passing					13
Negotiating Curve					65
Driving on Shoulder					2
Right Turn on Red					0
Other					9
Unknown					2
<b>TOTAL</b>					<b>1087</b>

**NOTE:** Starting with 2006, the Driver Pre-Crash categories were changed to reflect the current NJTR-1.

## V. WHAT PEDESTRIANS WERE DOING

Pedestrian Pre-Crash Action	Fatal Crashes				
	2002	2003	2004	2005	2006
Crossing at Marked Crosswalk					22
Crossing at Unmarked Crosswalk					15
Crossing Where Prohibited					72
Other Pedestrian Action in Roadway					27
Pedestrian Off Of Roadway					6
Other Pedestrian Action					24
<b>TOTAL</b>					<b>166</b>

**NOTE:** Starting with 2006, the Pedestrian Pre-Crash categories were changed to reflect the current NJTR-1.

## W. CONTRIBUTING CIRCUMSTANCES

Contributing Circumstances	2002	2003	2004	2005	2006
Unsafe Speed					142
Driver Inattention					180
Failed to Obey Traffic Control					41
Failed to Yield Right of Way					39
Improper Lane Change					19
Improper Passing					12
Failed to Use Turn Signal					0
Improper Turn					15
Following Too Closely					15
Unsafe Backing					0
Improper Vehicle Lights					0
Traveling Wrong Way					5
Improper Parking					5
Failure to Keep Right					93
Other Driver Action					51
Mechanical Failure					9
Road / Environmental Factor					11
Pedestrian Violation					136
Pedalcyclist Violation					10
<b>TOTAL</b>					<b>783</b>

NOTE: In some crashes, alcohol and/or drug involvement may have contributed to the crash, however other driving actions are the proximate cause of the crash. For a detailed analysis of alcohol and drug related crashes, see Report M - Alcohol Factor.

Starting with 2006, the Contributing Circumstance categories were changed to reflect the current NJTR-1.

# SPECIFIC AREAS OF CONCERN

## INTERSTATE HIGHWAY FATALITIES

The Interstate Highway System of New Jersey is 100% completed, with 420.32 miles open to the motoring public. During 2006, the death rate averaged 9.25 deaths per month and 1 death for every 3.79 miles of highway. A concise analysis of victim classification, alcohol involvement, driver ages, contributing circumstances and manner of collision is outlined on the following page.

## INTERSTATE HIGHWAY MILEAGE

Highway Number	Mileage Open	Fatal Crashes by Highway
I-76	3.04	3
I-78	67.83	15
I-80	68.35	13
I-95	86.73	30
I-195	34.17	5
I-278	2.00	0
I-280	17.85	5
I-287	67.54	9
I-295	68.06	16
I-676	4.75	0
<b>TOTAL</b>	<b>420.32</b>	<b>96</b>

I-95 includes sections of the New Jersey Turnpike.

# INTERSTATE HIGHWAY FATALITIES

2006

Interstate Fatal Crashes: 96

Interstate Fatalities: 111

## Victim Classification

Drivers	68
Passengers	35
Pedestrians	8
Pedalcyclists	0
<b>TOTAL</b>	<b>111</b>

## Age of Drivers

16 & under	0
17	2
18 - 20	10
21 - 24	14
25 - 29	20
30 - 39	39
40 - 49	44
50 - 64	35
65 & over	10
Unknown	2
<b>TOTAL</b>	<b>176</b>

## Contributing Circumstances

Unsafe Speed	14
Driver Inattention	42
Improper Lane Change	13
Improper Passing	0
Failed to Use Turn Signal	0
Following Too Closely	3
Traveling Wrong Way	1
Failure to Keep Right	2
Mechanical Failure	5
Road / Environmental Factor	2
Pedestrian Violation	7
Pedalcyclist Violation	0
Other / Unknown	18
No Improper Driving	75
<b>TOTAL</b>	<b>182</b>

## Manner of Collision

Angle	1
Same Direction - Rear End	25
Opposite Direction - Head On / Angular	10
Opposite Direction - Left / U-Turn	0
Fixed Object	31
Pedestrian	8
Sideswipe	6
Overturned	8
Other	7
<b>TOTAL</b>	<b>96</b>

## Victim Alcohol Factors

	.01% - .03%	.04% - .07%	.08% - .10%	.11% & over	Negative	No Test	TOTAL
Drivers	4	0	1	15	35	13	<b>68</b>
Passengers	2	0	1	3	20	9	<b>35</b>
Pedestrians	1	0	0	3	4	0	<b>8</b>
Pedalcyclists	0	0	0	0	0	0	<b>0</b>
<b>TOTAL</b>	<b>7</b>	<b>0</b>	<b>2</b>	<b>21</b>	<b>59</b>	<b>22</b>	<b>111</b>

Five drivers and 2 passengers tested positive for alcohol and drugs (Illicit & Medication).

Seven drivers and 3 passengers tested positive for drugs (Illicit & Medication) alone.

# FATAL PEDALCYCLE CRASHES

	2002	2003	2004	2005	2006
Pedalcycle Crashes	15	11	16	17	12
Fatalities	15	11	16	17	12

## Age of Victim

	2002	2003	2004	2005	2006
0 - 3	0	0	0	0	0
4 - 10	0	1	0	2	0
11 - 15	3	3	2	3	1
16 - 20	2	0	1	0	1
21 - 30	1	1	0	1	2
31 - 40	5	0	4	0	2
41 - 50	2	2	1	4	1
51 - 60	0	2	3	5	4
61 & over	2	0	5	2	1
Unknown	0	2	0	0	0
<b>TOTAL</b>	<b>15</b>	<b>11</b>	<b>16</b>	<b>17</b>	<b>12</b>

## Classification of Victim

	2002	2003	2004	2005	2006
Drivers	15	11	16	17	12
Passengers	0	0	0	0	0
<b>TOTAL</b>	<b>15</b>	<b>11</b>	<b>16</b>	<b>17</b>	<b>12</b>

## Contributing Circumstances

	2002	2003	2004	2005	2006
No Improper Driving					2
Driver Inattention					1
Failed to Yield Right of Way					3
Failed to Obey Traffic Control					2
Failure to Keep Right					1
Improper Turn					1
Other					2
Unknown					0
<b>TOTAL</b>					<b>12</b>

## ALCOHOL/DRUG INVOLVEMENT

Of the 12 pedalcyclist fatalities, 12 were tested. Of those 12 tested, 0 tested positive for drugs only, 4 tested positive for alcohol only and 1 tested positive for alcohol and drugs. Seven were negative for alcohol and/or drugs and 0 were not tested.

# FATAL MOTORCYCLE CRASHES

	2002	2003	2004	2005	2006
Motorcycle Crashes	53	56	72	62	98
Fatalities	54	58	76	64	102*

\*3 Pedestrians were killed

## Age of Drivers

	2002	2003	2004	2005	2006
16 & under	1	2	1	0	0
17 - 20	5	7	4	3	4
21 - 30	12	16	26	19	30
31 - 40	16	14	22	16	22
Over 40	19	18	21	23	38
<b>TOTAL</b>	<b>53</b>	<b>57</b>	<b>74</b>	<b>61</b>	<b>94</b>

## Classification of Victim

	2002	2003	2004	2005	2006
Drivers	49	54	69	61	94
Passengers	2	4	5	2	5
<b>TOTAL</b>	<b>51</b>	<b>58</b>	<b>74</b>	<b>63</b>	<b>99</b>

## Contributing Circumstances

	'02	'03	'04	'05	'06
Unsafe Speed					35
Driver Inattention					18
Improper Lane Change					0
Improper Passing					4
Failed to Use Turn Signal					0
Following Too Closely					1
Failure to Keep Right					11
Mechanical Failure					1
Road/Environmental Factor					0
Pedestrian Violation					1
Pedalcyclist Violation					0
Other/Unknown					4
No Improper Driving					20
<b>TOTAL</b>					<b>95</b>

## Manner of Collision

	'02	'03	'04	'05	'06
Angle	14	19	14	16	8
Same Direction - Rear End	4	8	7	3	12
Opposite Direction - Head On/Angular	2	6	8	7	11
Opposite Direction - Left/U-Turn	4	2	5	6	18
Fixed Object	17	15	18	13	27
Pedestrian	1	0	0	1	2
Other*	5	3	17	10	3
Sideswipe	1	1	0	1	5
Overtaken	5	2	3	5	12
<b>TOTAL</b>	<b>53</b>	<b>56</b>	<b>72</b>	<b>62</b>	<b>98</b>

## Victim Alcohol Factors

	.01% - .03%	.04% - .07%	.08% - .10%	.11% & over	Negative	No Test	TOTAL
Drivers	7	2	4	17	52	12	<b>94</b>
Passengers	0	0	0	0	2	3	<b>5</b>
<b>TOTAL</b>	<b>7</b>	<b>2</b>	<b>4</b>	<b>17</b>	<b>54</b>	<b>15</b>	<b>99</b>

8 deceased drivers and 0 passengers tested positive for alcohol and drugs (Illicit & Medication). 8 deceased drivers and 0 passengers tested positive for drugs (Illicit & Medication) alone.

Starting with 2006, the Contributing Circumstance categories were changed to reflect the current NJTR-1.



# FATAL TRACTOR-TRAILER CRASHES

	2002	2003	2004	2005	2006
Tractor-Trailer Crashes	39	48	41	55	45
Fatalities	46	53	43	59	53

## Manner of Collision

	'02	'03	'04	'05	'06
Angle					6
Same Direction - Rear End					14
Opposite Direction - Head On/Angular					7
Opposite Direction - Left/U-Turn					1
Fixed Object					2
Pedestrian					1
Other					7
Sideswipe					3
Overtaken					4
<b>TOTAL</b>					<b>45</b>

## Victim Classification

	2002	2003	2004	2005	2006
Drivers	5	7	6	12	6
Passengers	1	1	0	1	0
<b>TOTAL</b>	<b>6</b>	<b>8</b>	<b>6</b>	<b>13</b>	<b>6</b>

## Other Victim Classifications

	2002	2003	2004	2005	2006
Drivers	22	27	21	35	33
Passengers	10	10	10	8	13
Pedestrians	7	8	6	3	1
Pedalcyclists	1	0	0	0	0
<b>TOTAL</b>	<b>40</b>	<b>45</b>	<b>37</b>	<b>46</b>	<b>47</b>

## Tractor-Trailer Contributing Circumstances

	'02	'03	'04	'05	'06
Unsafe Speed					4
Driver Inattention					5
Improper Lane Change					0
Improper Passing					0
Failed to Use Turn Signal					0
Following Too Closely					2
Failure to Keep Right					0
Mechanical Failure					1
Road/Environmental Factor					1
Other/Unknown					4
No Improper Driving					32
<b>TOTAL</b>					<b>49</b>

## Other Involved Vehicle Contributing Circumstances

	'02	'03	'04	'05	'06
Unsafe Speed					3
Driver Inattention					11
Improper Lane Change					4
Improper Passing					0
Failed to Use Turn Signal					0
Following Too Closely					1
Failure to Keep Right					3
Mechanical Failure					1
Road/Environmental Factor					0
Other/Unknown					9
No Improper Driving					17
Pedestrian Violation					0
No Pedestrian Violation					0
<b>TOTAL</b>					<b>49</b>

Starting with 2006, the Manner of Collision and Contributing Circumstance categories were changed to reflect the current NJTR-1.

## TRACTOR-TRAILER VICTIM ALCOHOL FACTORS

	VICTIM ALCOHOL FACTORS						
	.01% - .03%	.04% - .07%	.08% - .10%	.11% & over	Negative	No test	TOTAL
Drivers	0	0	0	1	5	0	6
Passengers	0	0	0	0	0	0	0
<b>TOTAL</b>	<b>0</b>	<b>0</b>	<b>0</b>	<b>1</b>	<b>5</b>	<b>0</b>	<b>6</b>

One driver tested positive for drugs.

## OTHER VICTIM ALCOHOL FACTORS

	VICTIM ALCOHOL FACTORS						
	.01% - .03%	.04% - .07%	.08% - .10%	.11% & over	Negative	No test	TOTAL
Drivers	3	0	0	4	23	4	34
Passengers	0	0	0	0	10	4	14
Pedalcyclists	0	0	0	0	0	0	0
Pedestrians	0	0	0	0	1	0	1
<b>TOTAL</b>	<b>3</b>	<b>0</b>	<b>0</b>	<b>4</b>	<b>34</b>	<b>8</b>	<b>49</b>

Six drivers and 2 passengers tested positive for drugs.

## SAFETY EQUIPMENT USAGE - ALL VEHICLES

Safety Equipment Used	Driver survived	Driver killed	Passenger killed
Unknown	38	6	6
None	50	113	70
Lap Belt	6	4	0
Harness	0	2	1
Lap Belt & Harness	382	59	34
Child Restraint	0	0	6
Helmet	5	85	4
Airbag Only	28	69	23
Airbag & Seatbelts	145	92	18
Safety Vest (Ped only)	0	0	0
Other	0	0	0
<b>Total</b>	<b>654</b>	<b>430</b>	<b>162</b>

Based on the various sources of information (accident reports, observations, interviews, evidence), the seat belt data may not be completely reliable.

## 17 - 20 AGE GROUP

Listed below are the 17 to 20-year-old drivers involved in fatal motor vehicle crashes.

Year	Total fatal crashes 17 - 20 drivers	Total drivers involved	Number of drivers drunk*
2006	112	117	16

\* .08 & over

2006	17 years old	18 years old	19 years old	20 years old
Total Drivers Involved	27	36	32	22
Number of Drivers Drunk	2	8	4	2

### FATAL CRASHES WITH ALCOHOL INVOLVED

2006	17 years old	18 years old	19 years old	20 years old
Crashes	2	11	6	3

### VICTIM CLASSIFICATION

2006	17 years old	18 years old	19 years old	20 years old
Drivers	13	16	8	9
Passengers	7	5	8	7

## FATAL CRASHES AND PERSONS KILLED FOR SELECTED HOLIDAY PERIODS IN NEW JERSEY

Holiday				Fatal Crashes	Persons Killed
Memorial Day					
	2002	(4)	96 Hours	8	9
	2003	(4)	96 Hours	7	9
	2004	(4)	96 Hours	12	15
	2005	(4)	96 Hours	8	8
	2006	(3)	72 Hours	12	14
Fourth of July					
	2002	(2)	48 Hours	5	6
	2003	(4)	96 Hours	5	6
	2004	(5)	120 Hours	20	22
	2005	(4)	96 Hours	4	8
	2006	(4)	96 Hours	14	17
Labor Day					
	2002	(4)	96 Hours	8	8
	2003	(4)	96 Hours	9	11
	2004	(4)	96 Hours	13	15
	2005	(4)	96 Hours	14	15
	2006	(3)	72 Hours	9	9
Thanksgiving					
	2002	(5)	120 Hours	5	5
	2003	(5)	120 Hours	9	10
	2004	(5)	120 Hours	9	11
	2005	(5)	120 Hours	16	22
	2006	(4)	96 Hours	16	19
Christmas					
	2002	(4)	96 Hours	3	3
	2003	(2)	48 Hours	6	6
	2004	(4)	96 Hours	16	18
	2005	(4)	96 Hours	9	10
	2006	(3)	72 Hours	13	14
New Year's					
	2002-03	(4)	96 Hours	10	11
	2003-04	(2)	48 Hours	2	2
	2004-05	(4)	96 Hours	6	6
	2005-06	(4)	96 Hours	6	6
	2006-07	(3)	72 Hours	9	14

Figures in parentheses show the number of whole days in each holiday period.

## TEN YEAR EXPERIENCE

Years	Fatal Crashes	Fatalities	Drivers	Passengers	Pedestrians	Pedalcyclists	Motorcycles*	Mopeds*	Alcohol Involvement
1997	699	774	405	203	145	21	44	0	30.8%
1998	671	741	403	163	156	19	38	0	27.4%
1999	664	725	384	164	153	24	40	1	32.0%
2000	655	723	415	151	144	13	55	0	36.1%
2001	677	740	417	168	130	25	72	0	31.0%
2002	699	771	419	161	176	15	53	0	33.4%
2003	666	735	416	171	137	11	58	0	32.5%
2004	684	732	425	131	151	16	74	0	31.9%
2005	691	748	427	150	154	17	64	0	33.1%
2006	708	770	430	162	166	12	102	0	31.2%
<b>TOTAL</b>	<b>6,814</b>	<b>7,459</b>	<b>4,141</b>	<b>1,624</b>	<b>1,512</b>	<b>173</b>	<b>600</b>	<b>1</b>	<b>31.9%</b>

\* Included in "Driver Totals" - If passenger, included in "Passenger Totals."

# NJSP FATAL CRASH INVESTIGATIONS SUMMARY BY TROOP

## LEGEND

EXPRESSWAY . . . . . Atlantic City Expressway	TURNPIKE . . . . . New Jersey Turnpike
CR . . . . . County Road	MP . . . . . Milepost
PARKWAY . . . . . Garden State Parkway	SH . . . . . State Highway
PIP . . . . . Palisades Interstate Parkway	

### TROOP A

Date	Time	Station	Road	MP	Municipality	County	Contributing Circumstances
01/15/2006	0326	BELLMAWR	SH 42	11.0	GLOUCESTER TWSP	CAMDEN	DRUNK DRIVING, PEDESTRIAN VIOLATION
01/25/2006	0820	WOODSTOWN	CR 540	11.7	ALLOWAY TWSP	SALEM	DRIVER INATTENTION, FAIL TO YIELD RIGHT OF WAY
02/03/2006	0654	BELLMAWR	SH 42	9.3	GLOUCESTER TWSP	CAMDEN	FAILURE TO KEEP RIGHT
02/19/2006	0319	WOODSTOWN	CR 635	7.7	UPPER PITTSBGROVE TW	SALEM	DRUNK DRIVING
02/23/2006	1537	BUENA VISTA	SH 54	1.9	BUENA VISTA TWSP	ATLANTIC	DRIVER INATTENTION
03/05/2006	1744	WOODSTOWN	CR 611	1.3	ALLOWAY TWSP	SALEM	DRUNK DRIVING
03/17/2006	2254	BRIDGETON	CR 743	0.3	UPPER DEERFIELD TWS	CUMBERLAND	DRUNK DRIVING
03/19/2006	2313	WOODSTOWN	I-295	11.7	LOGAN TWSP	GLOUCESTER	PEDESTRIAN VIOLATION
04/06/2006	1401	BELLMAWR	I-76	1.2	GLOUCESTER CITY	CAMDEN	DRIVER INATTENTION
04/14/2006	1407	A.C.E.	EXPRESSWAY	15.8	HAMILTON TWSP	ATLANTIC	FAILURE TO KEEP RIGHT
04/22/2006	1425	PORT NORRIS	SH 47	33.7	MAURICE RIVER TWSP	CUMBERLAND	UNSAFE SPEED
05/02/2006	1131	WOODSTOWN	CR 601	3.5	OLDMANS TWSP	SALEM	FAIL TO YIELD RIGHT OF WAY
05/03/2006	1539	BRIDGETON	CR 690	6.5	PITTSBGROVE TWSP	SALEM	UNDER INFLUENCE OF DRUGS
05/05/2006	1251	WOODSTOWN	CR 657	4.3	ALLOWAY TWSP	SALEM	PEDESTRIAN VIOLATION
05/28/2006	1424	PORT NORRIS	CR 550	3.1	MAURICE RIVER TWSP	CUMBERLAND	DRIVER INATTENTION
05/29/2006	0232	WOODBINE	SH 9	26.8	UPPER TWSP	CAPE MAY	DRUNK DRIVING
05/29/2006	2345	BELLMAWR	SH 42	14.2	BELLMAWR BORO	CAMDEN	IMPROPER LANE CHANGE
05/31/2006	1736	PORT NORRIS	CR 649	3.0	COMMERCIAL TWSP	CUMBERLAND	FAILURE TO KEEP RIGHT
06/04/2006	1829	BELLMAWR	I-295	25.9	BELLMAWR BORO	CAMDEN	UNDER INFLUENCE OF DRUGS
07/01/2006	2103	BELLMAWR	I-295	18.0	EAST GREENWICH TWSP	GLOUCESTER	UNSAFE SPEED
07/04/2006	1619	BUENA VISTA	SH 322	37.0	FOLSOM BORO	ATLANTIC	IMPROPER TURNING
07/13/2006	2014	BRIDGETON	CR 674	0.6	PITTSBGROVE TWSP	SALEM	DRIVER INATTENTION
07/30/2006	0717	BELLMAWR	SH 42	14.2	BELLMAWR BORO	CAMDEN	UNSAFE SPEED
08/06/2006	0314	BUENA VISTA	SH 50	15.0	ESTELL MANOR CITY	ATLANTIC	DRUNK DRIVING
08/19/2006	1905	PORT NORRIS	SH 47	33.8	MAURICE RIVER TWSP	CUMBERLAND	DRUNK DRIVING
08/24/2006	2031	BRIDGETON	CR 540	21.9	UPPER DEERFIELD TWS	CUMBERLAND	DRIVER INATTENTION
08/26/2006	0055	BELLMAWR	I-295	28.4	BELLMAWR BORO	CAMDEN	UNSAFE SPEED
08/26/2006	1655	BRIDGETON	CR 722	0.5	FAIRFIELD TWSP	CUMBERLAND	UNSAFE SPEED
08/27/2006	1031	BELLMAWR	SH 42	12.3	DEPTFORD TWSP	GLOUCESTER	DRIVER INATTENTION
08/27/2006	1618	BUENA VISTA	SH 50	15.6	ESTELL MANOR CITY	ATLANTIC	FAILURE TO KEEP RIGHT
09/06/2006	1500	BUENA VISTA	SH 50	19.6	HAMILTON TWSP	ATLANTIC	FAIL TO OBEY TRAF CTRL DEV
09/15/2006	1550	WOODBINE	CR 625	0.6	DENNIS TWSP	CAPE MAY	IMPROPER TURNING
09/25/2006	1428	BUENA VISTA	CR 666	6.9	WEYMOUTH TWSP	ATLANTIC	FAIL TO YIELD RIGHT OF WAY
09/27/2006	2200	WOODBINE	CR 631	5.1	UPPER TWSP	CAPE MAY	FAIL TO YIELD RIGHT OF WAY
09/30/2006	0930	WOODSTOWN	THREE BRIDGES RD	0.0	UPPER PITTSBGROVE TW	SALEM	FAIL TO OBEY TRAF CTRL DEV
10/13/2006	1642	BRIDGETON	CR 674	0.5	PITTSBGROVE TWSP	SALEM	FAILURE TO KEEP RIGHT
10/15/2006	0003	A.C.E.	EXPRESSWAY	26.9	HAMMONTON TOWN	ATLANTIC	FAILURE TO KEEP RIGHT
11/10/2006	0038	BELLMAWR	I-295	25.0	WESTVILLE BORO	GLOUCESTER	DRUNK DRIVING
11/10/2006	1110	BELLMAWR	I-76	1.3	GLOUCESTER CITY	CAMDEN	OTHER DRIVER ACTION
11/10/2006	2108	PORT NORRIS	CR 644	2.9	MAURICE RIVER TWSP	CUMBERLAND	DRUNK DRIVING
11/11/2006	1117	WOODSTOWN	SH 40	14.1	PILESBROUGH TWSP	SALEM	DRUNK DRIVING
11/25/2006	0318	A.C.E.	EXPRESSWAY	37.9	WINSLOW TWSP	CAMDEN	DRUNK DRIVING
11/28/2006	0537	A.C.E.	EXPRESSWAY	7.3	EGG HARBOR TWSP	ATLANTIC	DRUNK DRIVING
11/28/2006	1721	PORT NORRIS	SH 47	33.1	MAURICE RIVER TWSP	CUMBERLAND	UNDER INFLUENCE OF DRUGS
12/10/2006	1448	A.C.E.	EXPRESSWAY	39.5	WINSLOW TWSP	CAMDEN	DRIVER INATTENTION
12/14/2006	2019	PORT NORRIS	SH 55	20.3	MAURICE RIVER TWSP	CUMBERLAND	DRIVER INATTENTION
12/21/2006	0311	PORT NORRIS	SH 55	36.2	VINELAND CITY	CUMBERLAND	DRUNK DRIVING
12/24/2006	1248	PORT NORRIS	CR 767	0.8	COMMERCIAL TWSP	CUMBERLAND	FAILURE TO KEEP RIGHT
12/31/2006	0002	BELLMAWR	I-76	0.2	BELLMAWR BORO	CAMDEN	DRUNK DRIVING

### TROOP B

Date	Time	Station	Road	MP	Municipality	County	Contributing Circumstances
01/05/2006	1044	SOMERVILLE	I-287	20.1	BRIDGEWATER TWSP	SOMERSET	PEDESTRIAN VIOLATION
01/14/2006	1637	PERRYVILLE	I-78	8.5	BETHLEHEM TWSP	HUNTERDON	DRIVER INATTENTION
01/23/2006	1229	NETCONG	I-80	40.8	PARSIPPANY-TROY HIL	MORRIS	DRIVER INATTENTION
01/27/2006	0314	SOMERVILLE	I-78	35.7	WARREN TWSP	SOMERSET	DRUNK DRIVING
02/01/2006	0619	TOTOWA-SUB	I-80	64.3	LODI BORO	BERGEN	DRIVER INATTENTION
02/13/2006	1332	SOMERVILLE	I-78	53.5	UNION TWSP	UNION	IMPROPER LANE CHANGE

Date	Time	Station	Road	MP	Municipality	County	Contributing Circumstances
02/16/2006	1045	HOPE	SH 94	11.5	FRELINGHUYSEN TWSP	WARREN	UNDER INFLUENCE OF DRUGS
02/17/2006	0309	TOTOWA-SUB	I-80	59.6	PATERSON CITY	PASSAIC	DRUNK DRIVING
03/02/2006	1151	TOTOWA-SUB	I-280	0.9	PARSIPPANY-TROY HIL	MORRIS	DRIVER INATTENTION
03/23/2006	2325	WASHINGTON	CR 632	2.8	FRANKLIN TWSP	WARREN	DRIVER INATTENTION
03/26/2006	0827	PERRYVILLE	I-78	16.9	CLINTON TOWN	HUNTERDON	DRUNK DRIVING
04/02/2006	0009	TOTOWA-SUB	I-80	66.9	RIDGEFIELD PARK TWS	BERGEN	OTHER DRIVER ACTION
04/02/2006	1609	NETCONG	I-287	48.2	MONTVILLE TWSP	MORRIS	DRUNK DRIVING
04/04/2006	2157	SUSSEX	LOWER UNIONVILLE RD	0.0	WANTAGE TWSP	SUSSEX	DRIVER INATTENTION
04/06/2006	1019	SOMERVILLE	I-78	57.9	NEWARK CITY	ESSEX	IMPROPER LANE CHANGE
04/11/2006	2056	NETCONG	I-80	31.4	ROXBURY TWSP	MORRIS	DRUNK DRIVING
05/03/2006	2345	PERRYVILLE	I-78	12.5	UNION TWSP	HUNTERDON	DRIVER INATTENTION
05/12/2006	0019	SOMERVILLE	I-287	12.3	FRANKLIN TWSP	SOMERSET	UNSAFE SPEED
05/12/2006	1041	PERRYVILLE	I-78	27.7	BEDMINSTER TWSP	SOMERSET	UNDER INFLUENCE OF DRUGS
05/14/2006	0256	TOTOWA-SUB	I-280	10.2	ORANGE CITY	ESSEX	DRIVER INATTENTION, PEDESTRIAN VIOLATION
05/15/2006	1604	SUSSEX	CR 675	2.2	MONTAGUE TWSP	SUSSEX	DRUNK DRIVING
05/17/2006	2025	TOTOWA-SUB	I-80	53.8	WAYNE TWSP	PASSAIC	DRUNK DRIVING
05/28/2006	0135	NETCONG	I-287	31.7	HARDING TWSP	MORRIS	OTHER DRIVER ACTION
06/15/2006	1056	TOTOWA-SUB	I-280	2.5	EAST HONOVER TWSP	MORRIS	DRIVER INATTENTION
06/16/2006	2121	NETCONG	I-287	35.7	MORRISTOWN TOWN	MORRIS	UNSAFE SPEED
06/26/2006	2000	HOPE	I-80	11.4	HOPE TWSP	WARREN	DRUNK DRIVING
07/01/2006	1318	NETCONG	I-80	34.9	ROCKAWAY TWSP	MORRIS	IMPROPER LANE CHANGE
07/05/2006	0306	TOTOWA-SUB	I-80	51.8	FAIRFIELD BORO	ESSEX	DRIVER INATTENTION
07/08/2006	1452	TOTOWA-SUB	I-80	44.7	PARSIPPANY-TROY HIL	MORRIS	UNSAFE SPEED
07/08/2006	1955	SOMERVILLE	I-287	14.8	BRIDGEWATER TWSP	SOMERSET	DRIVER INATTENTION
07/19/2006	2138	SUSSEX	SH 15	19.0	LAFAYETTE TWSP	SUSSEX	IMPROPER PASSING
07/24/2006	1118	NETCONG	I-80	42.2	PARSIPPANY-TROY HIL	MORRIS	DRUNK DRIVING
07/24/2006	1535	NETCONG	I-287	49.3	MONTVILLE TWSP	MORRIS	IMPROPER LANE CHANGE
07/29/2006	1008	SUSSEX	SH 23	52.2	MONTAGUE TWSP	SUSSEX	FAILURE TO KEEP RIGHT
08/02/2006	0701	PERRYVILLE	CR 579	29.4	UNION TWSP	HUNTERDON	DRIVER INATTENTION
08/10/2006	1153	TOTOWA-SUB	I-280	8.2	WEST ORANGE TOWN	ESSEX	DRIVER INATTENTION
08/17/2006	0059	PERRYVILLE	I-78	8.2	BETHLEHEM TWSP	HUNTERDON	DRIVER INATTENTION, IMPROPER PARKING
08/28/2006	0008	TOTOWA-SUB	I-280	5.5	ROSELAND BORO	ESSEX	DRUNK DRIVING
08/29/2006	0539	SOMERVILLE	I-78	51.5	UNION TWSP	UNION	IMPROPER LANE CHANGE
08/31/2006	2004	SOMERVILLE	I-78	49.9	SPRINGFIELD TWSP	UNION	DRIVER INATTENTION
09/16/2006	2102	SUSSEX	CR 623	3.2	LAFAYETTE TWSP	SUSSEX	DRUNK DRIVING
09/24/2006	1526	PERRYVILLE	I-78	17.6	CLINTON TWSP	HUNTERDON	DRIVER INATTENTION
09/29/2006	2200	NETCONG	I-80	27.3	ROXBURY TWSP	MORRIS	DRUNK DRIVING
09/29/2006	2332	WASHINGTON	SH 46	10.1	WHITE TWSP	WARREN	PEDESTRIAN VIOLATION, UNKNOWN
10/11/2006	2021	PERRYVILLE	I-78	17.5	CLINTON TWSP	HUNTERDON	TIRES
10/12/2006	1448	NETCONG	I-80	29.9	MOUNT ARLINGTON BOR	MORRIS	UNDER INFLUENCE OF DRUGS
10/13/2006	0052	SOMERVILLE	I-287	14.5	BRIDGEWATER TWSP	SOMERSET	DRUNK DRIVING
10/19/2006	1132	WASHINGTON	CR 519	35.5	HARMONY TWSP	WARREN	IMPROPER PASSING
11/16/2006	0115	HOPE	CR 519	49.6	HOPE TWSP	WARREN	DRUNK DRIVING
11/22/2006	2254	SOMERVILLE	I-78	42.8	BERKELEY HEIGHTS TW	UNION	UNSAFE SPEED
11/23/2006	1553	SOMERVILLE	I-287	14.8	BRIDGEWATER TWSP	SOMERSET	UNSAFE SPEED
12/05/2006	1817	PERRYVILLE	I-78	12.9	UNION TWSP	HUNTERDON	UNDER INFLUENCE OF DRUGS
12/20/2006	0410	WASHINGTON	CR 623	6.3	WHITE TWSP	WARREN	DRUNK DRIVING
12/24/2006	0013	SUSSEX	LAYTON RD	0.0	WANTAGE TWSP	SUSSEX	DRUNK DRIVING

### TROOP C

Date	Time	Station	Road	MP	Municipality	County	Contributing Circumstances
01/05/2006	2158	BORDENTOWN	I-295	44.3	WESTAMPTON TWSP	BURLINGTON	PEDESTRIAN VIOLATION
01/18/2006	2325	HAMILTON-SUB	I-295	65.0	HAMILTON TWSP	MERCER	DRIVER INATTENTION
01/24/2006	1555	BORDENTOWN	CR 537	30.5	NORTH HANOVER TWSP	BURLINGTON	FAIL TO YIELD RIGHT OF WAY, UNDER INFLUENCE OF DRUGS
02/03/2006	1612	HAMILTON-SUB	MEIRS RD	0.0	UPPER FREEHOLD TWSP	MONMOUTH	UNSAFE SPEED
02/09/2006	1719	BORDENTOWN	I-295	42.3	MOUNT LAUREL TWSP	BURLINGTON	DRIVER INATTENTION, FOLLOWING TOO CLOSELY
03/02/2006	1719	RED LION	SH 70	17.0	SOUTHAMPTON TWSP	BURLINGTON	DRIVER INATTENTION
03/07/2006	1507	BORDENTOWN	CR 674	6.0	HAINESPORT TWSP	BURLINGTON	FAIL TO OBEY TRAF CTRL DEV
03/11/2006	1609	TUCKERTON	CR 563	29.5	WASHINGTON TWSP	BURLINGTON	FAILURE TO KEEP RIGHT, UNDER INFLUENCE OF DRUGS
03/11/2006	2056	HAMILTON-SUB	I-195	1.3	HAMILTON TWSP	MERCER	DRUNK DRIVING
03/20/2006	2045	BORDENTOWN	I-295	51.8	FLORENCE TWSP	BURLINGTON	DRIVER INATTENTION
03/30/2006	1815	KINGWOOD	SH 12	3.3	KINGWOOD TWSP	HUNTERDON	FAIL TO YIELD RIGHT OF WAY
03/31/2006	2156	BORDENTOWN	SH 130	52.5	MANSFIELD TWSP	BURLINGTON	DRUNK DRIVING, FOLLOWING TOO CLOSELY
04/26/2006	1524	RED LION	HUNTINGTON DR	0.0	SOUTHAMPTON TWSP	BURLINGTON	DRIVER INATTENTION
04/28/2006	2235	RED LION	SH 206	22.3	SOUTHAMPTON TWSP	BURLINGTON	DRUNK DRIVING

Date	Time	Station	Road	MP	Municipality	County	Contributing Circumstances
04/29/2006	1632	TUCKERTON	CR 542	11.5	WASHINGTON TWSP	BURLINGTON	IMPROPER PASSING
05/05/2006	2003	RED LION	ATSION RD	0.0	SHAMONG TWSP	BURLINGTON	DRUNK DRIVING
05/20/2006	0011	BORDENTOWN	CR 664	2.4	NORTH HANOVER TWSP	BURLINGTON	DRUNK DRIVING
05/28/2006	0040	BORDENTOWN	I-295	47.7	BURLINGTON TWSP	BURLINGTON	DRIVER INATTENTION
05/28/2006	0051	HAMILTON-SUB	MILLSTONE RD	0.0	MILLSTONE TWSP	MONMOUTH	DRUNK DRIVING
05/28/2006	1653	HAMILTON-SUB	I-195	6.1	WASHINGTON TWP	MERCER	OTHER DRIVER ACTION
06/13/2006	1306	HAMILTON-SUB	CR 524	13.8	MILLSTONE TWSP	MONMOUTH	FAIL TO YIELD RIGHT OF WAY
06/15/2006	1836	RED LION	SH 206	10.5	SHAMONG TWSP	BURLINGTON	FAILURE TO KEEP RIGHT
07/01/2006	2241	BORDENTOWN	SH 38	14.8	HAINESPORT TWSP	BURLINGTON	UNSAFE SPEED
07/02/2006	1709	ALLENWOOD	I-195	13.7	UPPER FREEHOLD TWSP	MONMOUTH	DRIVER INATTENTION
07/14/2006	2005	BORDENTOWN	SH 206	27.5	SPRINGFIELD TWSP	BURLINGTON	UNDER INFLUENCE OF DRUGS
07/16/2006	1049	HAMILTON-SUB	SH 29	2.0	TRENTON	MERCER	UNSAFE SPEED
07/24/2006	1844	BORDENTOWN	CR 670	5.0	SPRINGFIELD TWSP	BURLINGTON	DRUNK DRIVING
07/30/2006	0015	HAMILTON-SUB	TURNPIKE	7.0	FLORENCE TWSP	MERCER	UNDER INFLUENCE OF DRUGS
08/03/2006	0811	ALLENWOOD	I-195	9.2	UPPER FREEHOLD TWSP	MONMOUTH	DRIVER INATTENTION
08/09/2006	1123	RED LION	SH 206	23.6	SOUTHAMPTON TWSP	BURLINGTON	FOLLOWING TOO CLOSELY
08/12/2006	2231	TUCKERTON	BUZZARD HILL RD	0.2	WOODLAND TWSP	BURLINGTON	UNSAFE SPEED
08/23/2006	1439	BORDENTOWN	I-295	50.1	FLORENCE TWSP	BURLINGTON	IMPROPER LANE CHANGE
09/24/2006	1439	TUCKERTON	CR 542	10.0	WASHINGTON TWSP	BURLINGTON	FAILURE TO KEEP RIGHT
09/27/2006	0638	BORDENTOWN	SH 38	12.5	HAINESPORT TWSP	BURLINGTON	IMPROPER PASSING
10/04/2006	0836	ALLENWOOD	I-195	9.6	UPPER FREEHOLD TWSP	MONMOUTH	DRIVER INATTENTION
10/08/2006	1401	HAMILTON-SUB	TURNPIKE	8.3	LAWRENCE TWSP	MERCER	UNDER INFLUENCE OF DRUGS
10/11/2006	0050	KINGWOOD	SH 12	0.1	FRENCHTOWN BORO	HUNTERDON	UNSAFE SPEED
10/16/2006	0016	BORDENTOWN	I-295	54.1	MANSFIELD TWSP	BURLINGTON	OTHER DRIVER ACTION
10/24/2006	2030	HAMILTON-SUB	SH 33	20.6	MILLSTONE TWSP	MONMOUTH	PEDESTRIAN VIOLATION
11/12/2006	0903	BORDENTOWN	SH 38	15.0	HAINESPORT TWSP	BURLINGTON	DRIVER INATTENTION
11/12/2006	2315	TUCKERTON	SH 9	65.8	EAGLESWOOD TWSP	OCEAN	FAILURE TO KEEP RIGHT
11/25/2006	2025	BORDENTOWN	I-295	39.4	MOUNT LAUREL TWSP	BURLINGTON	DRUNK DRIVING
12/18/2006	0745	TUCKERTON	SH 9	59.8	BASS RIVER TWSP	BURLINGTON	FAILURE TO KEEP RIGHT
12/25/2006	1535	BORDENTOWN	CR 537	23.5	SPRINGFIELD TWSP	BURLINGTON	FAILURE TO KEEP RIGHT
12/25/2006	1829	HAMILTON-SUB	I-295	65.4	HAMILTON TWSP	MERCER	IMPROPER LANE CHANGE
12/27/2006	1759	BORDENTOWN	I-295	45.3	WESTAMPTON TWSP	BURLINGTON	DRIVER INATTENTION
12/31/2006	1513	HAMILTON-SUB	CR 539	39.4	UPPER FREEHOLD TWSP	MONMOUTH	FAIL TO YIELD RIGHT OF WAY

### TROOP D

Date	Time	Station	Road	MP	Municipality	County	Contributing Circumstances
01/30/2006	2007	MOORESTOWN	TURNPIKE	14.2	EAST GREENWICH TWSP	GLOUCESTER	DRUNK DRIVING
02/27/2006	1347	MOORESTOWN	TURNPIKE	25.5	BELLMAWR BORO	CAMDEN	UNDER INFLUENCE OF DRUGS
03/03/2006	0332	MOORESTOWN	TURNPIKE	4.1	CARNEYS POINT TWSP	SALEM	PEDESTRIAN VIOLATION
03/13/2006	0218	NEWARK	TURNPIKE	117.0	RIDGEFIELD BORO	BERGEN	DRUNK DRIVING, OTHER DRIVER ACTION, UNKNOWN
03/22/2006	1854	CRANBURY	TURNPIKE	87.9	EDISON TWSP	MIDDLESEX	IMPROPER LANE CHANGE
04/01/2006	0421	CRANBURY	TURNPIKE	69.7	CRANBURY TWSP	MIDDLESEX	UNDER INFLUENCE OF DRUGS
04/01/2006	0522	CRANBURY	TURNPIKE	95.8	CARTERET BORO	MIDDLESEX	UNDER INFLUENCE OF DRUGS
04/11/2006	1130	CRANBURY	TURNPIKE	60.2	WASHINGTON TWP	MERCER	DRIVER INATTENTION
04/20/2006	0743	MOORESTOWN	TURNPIKE	31.1	CHERRY HILL TWSP	CAMDEN	FOLLOWING TOO CLOSELY
04/30/2006	1446	NEWARK	TURNPIKE	121.7	FORT LEE BORO	BERGEN	DRIVER INATTENTION
07/10/2006	2317	NEWARK	TURNPIKE	112.0	NORTH BERGEN TWSP	HUDSON	IMPROPER LANE CHANGE
07/22/2006	0507	NEWARK	TURNPIKE	105.2	NEWARK CITY	ESSEX	IMPROPER PARKING, OTHER VEHICLE FACTOR
08/07/2006	0828	CRANBURY	TURNPIKE	87.5	EDISON TWSP	MIDDLESEX	DRIVER INATTENTION
08/07/2006	1325	CRANBURY	TURNPIKE	72.4	CRANBURY TWSP	MIDDLESEX	DRIVER INATTENTION
08/14/2006	0317	NEWARK	TURNPIKE	107.1	NEWARK CITY	ESSEX	DRIVER INATTENTION
08/14/2006	1330	NEWARK	TURNPIKE	119.7	TEANECK TWSP	BERGEN	DRIVER INATTENTION
08/15/2006	1003	NEWARK	TURNPIKE	119.2	TEANECK TWSP	BERGEN	DRIVER INATTENTION
08/21/2006	1837	MOORESTOWN	TURNPIKE	11.9	WOOLWICH TWSP	GLOUCESTER	STEERING
09/03/2006	1613	MOORESTOWN	TURNPIKE	36.4	MOUNT LAUREL TWSP	BURLINGTON	TIRES
09/04/2006	2312	CRANBURY	TURNPIKE	68.4	EAST WINDSOR TWSP	MERCER	OBSTRUCTION/DEBRIS IN ROAD
10/06/2006	0725	MOORESTOWN	TURNPIKE	30.4	CHERRY HILL TWSP	CAMDEN	IMPROPER PARKING, TIRES
10/07/2006	0404	CRANBURY	TURNPIKE	39.6	EDISON TWSP	MIDDLESEX	DRUNK DRIVING
10/12/2006	2230	CRANBURY	TURNPIKE	85.4	EDISON TWSP	MIDDLESEX	DRIVER INATTENTION
11/03/2006	0606	NEWARK	TURNPIKE	105.1	NEWARK CITY	ESSEX	OTHER DRIVER ACTION, PEDESTRIAN VIOLATION
12/04/2006	0041	NEWARK	78	0.0	BAYONNE CITY	HUDSON	DRUNK DRIVING
12/10/2006	0425	CRANBURY	TURNPIKE	93.2	WOODBRIIDGE TWSP	MIDDLESEX	DRUNK DRIVING
12/18/2006	0547	NEWARK	TURNPIKE	0.0	KEARNY TOWN	HUDSON	DRUNK DRIVING
12/25/2006	0536	MOORESTOWN	TURNPIKE	10.5	WOOLWICH TWSP	GLOUCESTER	OTHER DRIVER ACTION
12/30/2006	1459	NEWARK	TURNPIKE	112.1	EAST RUTHERFORD BOR	BERGEN	OBSTRUCTION/DEBRIS IN ROAD



**TROOP E**

Date	Time	Station	Road	MP	Municipality	County	Contributing Circumstances
01/03/2006	0038	BASS RIVER	PARKWAY	86.9	TOMS RIVER	OCEAN	UNSAFE SPEED
01/07/2006	0248	BASS RIVER	PARKWAY	66.3	STAFFORD TWSP	OCEAN	FAILURE TO KEEP RIGHT
01/11/2006	2012	BLOOMFIELD	PARKWAY	170.0	WOODCLIFF LAKE BORO	BERGEN	DRUNK DRIVING
01/18/2006	2117	SAYREVILLE	PARKWAY	103.6	TINTON FALLS BORO	MONMOUTH	UNSAFE SPEED
01/27/2006	0222	SAYREVILLE	PARKWAY	123.6	SAYREVILLE BORO	MIDDLESEX	PASSENGER'S ACTION
02/02/2006	2235	SAYREVILLE	PARKWAY	112.1	MIDDLETOWN TWSP	MONMOUTH	PEDESTRIAN VIOLATION, UNDER INFLUENCE OF DRUGS
02/05/2006	0045	BLOOMFIELD	PARKWAY	153.8	CLIFTON CITY	PASSAIC	UNDER INFLUENCE OF DRUGS
03/11/2006	0425	SAYREVILLE	PARKWAY	119.3	ABERDEEN TWSP	MONMOUTH	DRIVER INATTENTION
03/26/2006	0604	SAYREVILLE	PARKWAY	94.1	BRICK TWSP	OCEAN	UNDER INFLUENCE OF DRUGS
04/02/2006	1527	BASS RIVER	PARKWAY	71.2	LACEY TWSP	OCEAN	FAILURE TO KEEP RIGHT
04/04/2006	2143	BLOOMFIELD	PARKWAY	140.7	UNION TWSP	UNION	DRUNK DRIVING
04/24/2006	0608	SAYREVILLE	PARKWAY	93.1	BRICK TWSP	OCEAN	DRIVER INATTENTION
04/30/2006	0539	BASS RIVER	PARKWAY	47.1	PORT REPUBLIC CITY	ATLANTIC	FAILURE TO KEEP RIGHT
05/03/2006	2127	BLOOMFIELD	PARKWAY	145.9	NEWARK CITY	ESSEX	UNDER INFLUENCE OF DRUGS
05/09/2006	1742	BASS RIVER	PARKWAY	86.0	TOMS RIVER	OCEAN	DRIVER INATTENTION
05/14/2006	0650	SAYREVILLE	PARKWAY	94.7	WALL TWSP	MONMOUTH	DRIVER INATTENTION
05/21/2006	1218	BASS RIVER	PARKWAY	37.0	EGG HARBOR TWSP	ATLANTIC	AVOIDING ANOTHER VEHICLE
05/27/2006	2102	SAYREVILLE	PARKWAY	118.9	ABERDEEN TWSP	MONMOUTH	UNSAFE SPEED
05/29/2006	1731	BASS RIVER	PARKWAY	43.0	GALLOWAY TWSP	ATLANTIC	FAILURE TO KEEP RIGHT
06/25/2006	0635	BASS RIVER	PARKWAY	42.8	GALLOWAY TWSP	ATLANTIC	DRIVER INATTENTION
07/02/2006	1050	BASS RIVER	PARKWAY	82.7	TOMS RIVER	OCEAN	FOLLOWING TOO CLOSELY
07/16/2006	1305	BASS RIVER	PARKWAY	10.9	MIDDLE TWSP	CAPE MAY	DRIVER INATTENTION
08/24/2006	2216	SAYREVILLE	PARKWAY	97.1	WALL TWSP	MONMOUTH	DRUNK DRIVING, FAIL TO YIELD RIGHT OF WAY
09/05/2006	0030	BLOOMFIELD	PARKWAY	134.3	WOODBIDGE TWSP	MIDDLESEX	PEDESTRIAN VIOLATION
09/07/2006	1330	BASS RIVER	PARKWAY	39.1	EGG HARBOR TWSP	ATLANTIC	TIRES
09/16/2006	0445	BASS RIVER	PARKWAY	79.4	BEACHWOOD BORO	OCEAN	FAILURE TO KEEP RIGHT
09/25/2006	1727	BASS RIVER	PARKWAY	11.0	MIDDLE TWSP	CAPE MAY	FAIL TO YIELD RIGHT OF WAY
10/03/2006	2222	SAYREVILLE	PARKWAY	128.0	WOODBIDGE TWSP	MIDDLESEX	DRUNK DRIVING
10/08/2006	1534	SAYREVILLE	PARKWAY	91.2	LAKEWOOD TWSP	OCEAN	DRIVER INATTENTION
10/27/2006	2335	BASS RIVER	PARKWAY	7.1	MIDDLE TWSP	CAPE MAY	FAILURE TO KEEP RIGHT
11/05/2006	1620	SAYREVILLE	PARKWAY	93.5	BRICK TWSP	OCEAN	DRUNK DRIVING
11/13/2006	2345	BASS RIVER	PARKWAY	74.8	LACEY TWSP	OCEAN	UNSAFE SPEED
11/23/2006	0305	BASS RIVER	PARKWAY	66.4	STAFFORD TWSP	OCEAN	FAILURE TO KEEP RIGHT
11/23/2006	1908	BASS RIVER	PARKWAY	67.4	BARNEGAT TWSP	OCEAN	UNSAFE SPEED
12/24/2006	1741	BLOOMFIELD	PARKWAY	148.5	EAST ORANGE CITY	ESSEX	DRUNK DRIVING

# FATAL CRASHES BY COUNTY, MUNICIPALITY, DATE, TIME AND LOCATION

## LEGEND

EXPRESSWAY . . . . . Atlantic City Expressway	TURNPIKE . . . . . New Jersey Turnpike
CR . . . . . County Road	MP . . . . . Milepost
PARKWAY . . . . . Garden State Parkway	SH . . . . . State Highway
PIP . . . . . Palisades Interstate Parkway	

### ATLANTIC COUNTY

Municipality	Date	Day	Time	Road	MP	Persons Killed
MULLICA TWSP	01/25/2006	WEDNESDAY	0609	SH 30	35.5	1 PASSENGER
ABSECON CITY	01/28/2006	SATURDAY	0049	SH 30	52.1	1 PEDESTRIAN
ATLANTIC CITY	01/30/2006	MONDAY	1148	SOUTH NEW YORK AVE	0.0	1 PEDESTRIAN
PLEASANTVILLE CITY	02/07/2006	TUESDAY	1846	SH 40	58.6	1 PEDESTRIAN
HAMILTON TWSP	02/11/2006	SATURDAY	0410	ESTELLE AVE	0.0	1 DRIVER, 1 PASSENGER
BUENA VISTA TWSP	02/23/2006	THURSDAY	1537	SH 54	1.9	1 DRIVER
HAMILTON TWSP	02/26/2006	SUNDAY	0116	CR 559	19.9	1 DRIVER
ABSECON CITY	03/10/2006	FRIDAY	0226	SH 30	50.8	1 DRIVER
EGG HARBOR TWSP	03/28/2006	TUESDAY	0108	CR 662	1.7	1 DRIVER
PLEASANTVILLE CITY	04/09/2006	SUNDAY	1840	CR 585	6.4	1 DRIVER
HAMILTON TWSP	04/09/2006	SUNDAY	2242	SH 322	41.0	1 DRIVER
GALLOWAY TWSP	04/11/2006	TUESDAY	1406	CR 686	1.5	1 DRIVER
HAMILTON TWSP	04/14/2006	FRIDAY	1407	EXPRESSWAY	15.8	1 DRIVER
PORT REPUBLIC CITY	04/30/2006	SUNDAY	0539	PARKWAY	47.1	1 PASSENGER
HAMILTON TWSP	04/30/2006	SUNDAY	0742	SH 322	42.4	1 DRIVER
GALLOWAY TWSP	05/07/2006	SUNDAY	1658	CR 686	1.8	1 PASSENGER
HAMILTON TWSP	05/13/2006	SATURDAY	2245	SH 322	37.9	1 PEDESTRIAN
ABSECON CITY	05/14/2006	SUNDAY	2001	NEW JERSEY AVE	0.0	1 DRIVER
EGG HARBOR TWSP	05/21/2006	SUNDAY	1218	PARKWAY	37.0	1 DRIVER
MULLICA TWSP	05/21/2006	SUNDAY	1736	READING AVE	0.0	1 DRIVER
VENTNOR CITY	05/23/2006	TUESDAY	1939	CR 629	3.3	1 DRIVER
GALLOWAY TWSP	05/29/2006	MONDAY	1731	PARKWAY	43.0	1 DRIVER, 1 PASSENGER
MULLICA TWSP	06/04/2006	SUNDAY	1904	READING AVE	0.0	1 PASSENGER
ATLANTIC CITY	06/08/2006	THURSDAY	0717	SH 30	57.5	1 PASSENGER
GALLOWAY TWSP	06/16/2006	FRIDAY	0254	CR 634	4.9	1 DRIVER
EGG HARBOR TWSP	06/22/2006	THURSDAY	1300	CR 662	1.0	1 DRIVER
GALLOWAY TWSP	06/25/2006	SUNDAY	0635	PARKWAY	42.8	1 DRIVER
PLEASANTVILLE CITY	07/03/2006	MONDAY	0156	SH 9	39.8	1 DRIVER
FOLSOM BORO	07/04/2006	TUESDAY	1619	SH 322	37.0	1 DRIVER
GALLOWAY TWSP	07/09/2006	SUNDAY	0910	SH 30	48.1	1 DRIVER
EGG HARBOR TWSP	07/14/2006	FRIDAY	2108	OCEAN CITY-LONGPORT BLVD	0.0	1 PEDALCYCLIST
ESTELL MANOR CITY	08/06/2006	SUNDAY	0314	SH 50	15.0	1 DRIVER
EGG HARBOR TWSP	08/12/2006	SATURDAY	1313	TREMONT AVE	0.0	1 DRIVER
ESTELL MANOR CITY	08/27/2006	SUNDAY	1618	SH 50	15.6	1 DRIVER
HAMILTON TWSP	09/06/2006	WEDNESDAY	1500	SH 50	19.6	1 DRIVER
HAMILTON TWSP	09/07/2006	THURSDAY	0249	SH 40	46.7	1 DRIVER
EGG HARBOR TWSP	09/07/2006	THURSDAY	1330	PARKWAY	39.1	1 DRIVER
EGG HARBOR TWSP	09/08/2006	FRIDAY	2242	CR 646	5.1	1 DRIVER
GALLOWAY TWSP	09/17/2006	SUNDAY	2223	SH 30	49.4	1 PEDESTRIAN
PLEASANTVILLE CITY	09/23/2006	SATURDAY	1901	SH 40	59.4	1 PEDESTRIAN
WEYMOUTH TWSP	09/25/2006	MONDAY	1428	CR 666	6.9	1 DRIVER
HAMILTON TWSP	10/08/2006	SUNDAY	0737	ESTELLE AVE	0.0	1 DRIVER
HAMMONTON TOWN	10/15/2006	SUNDAY	0003	EXPRESSWAY	26.9	1 DRIVER
EGG HARBOR TWSP	10/18/2006	WEDNESDAY	2201	SH 322	61.4	1 PEDESTRIAN
EGG HARBOR TWSP	11/03/2006	FRIDAY	2029	SH 322	54.5	1 DRIVER
HAMILTON TWSP	11/08/2006	WEDNESDAY	2102	CR 614	3.4	1 DRIVER
EGG HARBOR TWSP	11/12/2006	SUNDAY	0044	RIDGE AVE	0.0	1 PASSENGER
HAMILTON TWSP	11/15/2006	WEDNESDAY	1759	MCCALL AVE	0.0	1 PEDESTRIAN
EGG HARBOR TWSP	11/17/2006	FRIDAY	1721	CR 536	6.2	1 DRIVER
ABSECON CITY	11/17/2006	FRIDAY	2248	SH 30	50.8	1 PEDESTRIAN
PLEASANTVILLE CITY	11/25/2006	SATURDAY	2219	CR 585	5.9	1 DRIVER, 1 PASSENGER
EGG HARBOR TWSP	11/28/2006	TUESDAY	0537	EXPRESSWAY	7.3	1 DRIVER
HAMMONTON TOWN	12/06/2006	WEDNESDAY	1345	SH 30	28.5	1 DRIVER, 1 PASSENGER

### BERGEN COUNTY

Municipality	Date	Day	Time	Road	MP	Persons Killed
HACKENSACK CITY	01/01/2006	SUNDAY	2139	SH 4	5.7	1 PEDESTRIAN
MAHWAH TWSP	01/06/2006	FRIDAY	1727	EAST CRESCENT AVE	0.0	1 PEDESTRIAN

Municipality	Date	Day	Time	Road	MP	Persons Killed
WOODCLIFF LAKE BORO	01/11/2006	WEDNESDAY	2012	PARKWAY	170.0	1 DRIVER
ENGLEWOOD CLIFFS BO	01/14/2006	SATURDAY	0331	PIP	2.1	1 PEDESTRIAN
LODI BORO	02/01/2006	WEDNESDAY	0619	I-80	64.3	1 DRIVER
SADDLE BROOK TWSP	02/23/2006	THURSDAY	2120	SH 46	65.8	1 PEDESTRIAN
HOHOKUS BORO	03/11/2006	SATURDAY	2134	CR 502	0.0	1 DRIVER
RIDGEFIELD BORO	03/13/2006	MONDAY	0218	TURNPIKE	117.0	1 DRIVER
RIDGEFIELD BORO	03/28/2006	TUESDAY	1632	SH 1	61.5	1 DRIVER
RIDGEFIELD PARK TWS	04/02/2006	SUNDAY	0009	I-80	66.9	1 DRIVER
OAKLAND BORO	04/03/2006	MONDAY	0740	EDISON AVE	0.0	1 DRIVER, 1 PASSENGER
RUTHERFORD BORO	04/14/2006	FRIDAY	2235	SH 3	5.5	1 PASSENGER
ALPINE BORO	04/27/2006	THURSDAY	0619	PIP	6.7	1 DRIVER
FORT LEE BORO	04/30/2006	SUNDAY	1446	TURNPIKE	121.7	1 PASSENGER
CRESSKILL BORO	05/06/2006	SATURDAY	1059	CR 501	47.4	1 PEDESTRIAN
ENGLEWOOD CITY	05/15/2006	MONDAY	2111	CR 64	0.6	1 PEDESTRIAN
OLD TAPPAN BORO	05/23/2006	TUESDAY	0041	CR 106	0.2	1 DRIVER,
RAMSEY BORO	05/26/2006	FRIDAY	0442	SH 17	22.8	1 PASSENGER
SADDLE BROOK TWSP	06/19/2006	MONDAY	1214	CR 79	1.4	1 DRIVER
RIDGEWOOD TWSP	07/14/2006	FRIDAY	1824	SOUTH VAN DIEN AVE	0.0	1 DRIVER
ENGLEWOOD CITY	07/16/2006	SUNDAY	0011	ENGLEWOOD AVE	0.0	1 PEDESTRIAN
FORT LEE BORO	08/04/2006	FRIDAY	0225	CR 54	0.2	1 DRIVER
TEANECK TWSP	08/14/2006	MONDAY	1330	TURNPIKE	119.7	2 DRIVERS, 2 PASSENGERS
TEANECK TWSP	08/15/2006	TUESDAY	1003	TURNPIKE	119.2	1 PASSENGER
NEW MILFORD BORO	08/23/2006	WEDNESDAY	2242	CR 70	1.1	1 PASSENGER
PALISADES PARK BORO	09/02/2006	SATURDAY	0828	SH 93	1.2	1 PEDESTRIAN
RIDGEFIELD PARK TWS	09/03/2006	SUNDAY	1937	CR 124	1.2	1 PEDESTRIAN
TEANECK TWSP	09/15/2006	FRIDAY	1128	GARRISON AVE	0.0	1 PEDESTRIAN
CLOSTER BORO	09/21/2006	THURSDAY	1149	CR 501	49.8	1 DRIVER
FAIRVIEW BORO	10/07/2006	SATURDAY	0247	SH 1	61.3	1 DRIVER
CARLSTADT BORO	10/14/2006	SATURDAY	1703	CR 55	0.8	1 DRIVER
NORTH ARLINGTON BOR	10/21/2006	SATURDAY	1924	CR 507	3.7	1 PEDESTRIAN
RIDGEFIELD BORO	10/24/2006	TUESDAY	0645	SH 1	61.4	1 PEDESTRIAN
SADDLE RIVER BORO	11/09/2006	THURSDAY	0916	CR 73	2.5	1 DRIVER
GARFIELD CITY	12/01/2006	FRIDAY	2331	CR 507	11.6	1 PASSENGER
RIVER VALE TWSP	12/13/2006	WEDNESDAY	1804	CR 114	1.2	1 PEDESTRIAN
RIDGEWOOD TWSP	12/21/2006	THURSDAY	1938	CR 62	0.7	1 PEDESTRIAN
TENAFLY BORO	12/25/2006	MONDAY	1157	TENAFLY RD	0.0	1 PEDESTRIAN
EAST RUTHERFORD BOR	12/30/2006	SATURDAY	1459	TURNPIKE	112.1	1 PASSENGER

### BURLINGTON COUNTY

Municipality	Date	Day	Time	Road	MP	Persons Killed
WESTAMPTON TWSP	01/05/2006	THURSDAY	2158	I-295	44.3	1 PEDESTRIAN
EDGEWATER PARK TWSP	01/10/2006	TUESDAY	1400	SH 130	43.7	1 DRIVER
NORTH HANOVER TWSP	01/24/2006	TUESDAY	1555	CR 537	30.5	1 DRIVER
BURLINGTON TWSP	01/26/2006	THURSDAY	2052	CR 634	1.6	1 PEDESTRIAN
MAPLE SHADE TWSP	01/27/2006	FRIDAY	0352	SH 73	30.0	1 DRIVER
MOUNT LAUREL TWSP	02/09/2006	THURSDAY	1719	I-295	42.3	1 DRIVER
SOUTHAMPTON TWSP	03/02/2006	THURSDAY	1719	SH 70	17.0	1 PASSENGER
HAINESPORT TWSP	03/07/2006	TUESDAY	1507	CR 674	6.0	1 DRIVER
WASHINGTON TWSP	03/11/2006	SATURDAY	1609	CR 563	29.5	1 DRIVER
FLORENCE TWSP	03/20/2006	MONDAY	2045	I-295	51.8	1 DRIVER
CINNAMINSON TWSP	03/29/2006	WEDNESDAY	0555	CR 606	0.4	1 DRIVER
BORDENTOWN TWSP	03/30/2006	THURSDAY	2303	SH 130	55.8	1 PEDESTRIAN
MANSFIELD TWSP	03/31/2006	FRIDAY	2156	SH 130	52.5	1 DRIVER
BEVERLY CITY	04/04/2006	TUESDAY	1816	CR 543	13.3	1 PEDESTRIAN
SOUTHAMPTON TWSP	04/26/2006	WEDNESDAY	1524	HUNTINGTON DR	0.0	1 DRIVER, 1 PASSENGER
SOUTHAMPTON TWSP	04/28/2006	FRIDAY	2235	SH 206	22.3	1 DRIVER
WASHINGTON TWSP	04/29/2006	SATURDAY	1632	CR 542	11.5	1 DRIVER
SHAMONG TWSP	05/05/2006	FRIDAY	2003	ATSION RD	0.0	1 DRIVER
LUMBERTON TWSP	05/17/2006	WEDNESDAY	1923	CR 612	8.0	1 DRIVER
NORTH HANOVER TWSP	05/20/2006	SATURDAY	0011	CR 664	2.4	1 PASSENGER
BURLINGTON TWSP	05/28/2006	SUNDAY	0040	I-295	47.7	1 DRIVER
PALMYRA BORO	06/05/2006	MONDAY	0104	SH 73	34.6	1 DRIVER
SHAMONG TWSP	06/15/2006	THURSDAY	1836	SH 206	10.5	1 DRIVER
HAINESPORT TWSP	07/01/2006	SATURDAY	2241	SH 38	14.8	1 DRIVER, 1 PASSENGER
MOUNT LAUREL TWSP	07/02/2006	SUNDAY	1844	SH 38	12.1	1 DRIVER
MOUNT HOLLY TWSP	07/07/2006	FRIDAY	1744	CR 691	2.8	1 DRIVER
SPRINGFIELD TWSP	07/14/2006	FRIDAY	2005	SH 206	27.5	1 DRIVER
SPRINGFIELD TWSP	07/24/2006	MONDAY	1844	CR 670	5.0	1 DRIVER
SOUTHAMPTON TWSP	08/09/2006	WEDNESDAY	1123	SH 206	23.6	1 DRIVER
WOODLAND TWSP	08/12/2006	SATURDAY	2231	BUZZARD HILL RD	0.2	1 DRIVER
WILLINGBORO TWSP	08/23/2006	WEDNESDAY	1225	CR 626	5.0	1 DRIVER
FLORENCE TWSP	08/23/2006	WEDNESDAY	1439	I-295	50.1	1 PASSENGER

Municipality	Date	Day	Time	Road	MP	Persons Killed
MOUNT LAUREL TWSP	09/03/2006	SUNDAY	1613	TURNPIKE	36.4	1 PASSENGER
WASHINGTON TWSP	09/24/2006	SUNDAY	1439	CR 542	10.0	1 DRIVER
BORDENTOWN TWSP	09/25/2006	MONDAY	1001	KLEIN DR	0.0	1 DRIVER
HAINESPORT TWSP	09/27/2006	WEDNESDAY	0638	SH 38	12.5	1 DRIVER
MANSFIELD TWSP	10/16/2006	MONDAY	0016	I-295	54.1	1 DRIVER
EVESHAM TWSP	10/24/2006	TUESDAY	1351	CR 618	1.4	1 DRIVER
PEMBERTON TWSP	11/11/2006	SATURDAY	0515	BARCLAY ST	0.0	1 PASSENGER
HAINESPORT TWSP	11/12/2006	SUNDAY	0903	SH 38	15.0	1 DRIVER
MOUNT LAUREL TWSP	11/25/2006	SATURDAY	2025	I-295	39.4	1 DRIVER
BASS RIVER TWSP	12/18/2006	MONDAY	0745	SH 9	59.8	1 DRIVER
CINNAMINSON TWSP	12/24/2006	SUNDAY	1912	SH 130	37.8	1 PEDESTRIAN
SPRINGFIELD TWSP	12/25/2006	MONDAY	1535	CR 537	23.5	1 DRIVER
WESTAMPTON TWSP	12/27/2006	WEDNESDAY	1759	I-295	45.3	1 DRIVER

### CAMDEN COUNTY

Municipality	Date	Day	Time	Road	MP	Persons Killed
WINSLOW TWSP	01/08/2006	SUNDAY	2249	CR 723	2.5	1 DRIVER
CAMDEN CITY	01/09/2006	MONDAY	1948	SH 130	55.0	1 PEDESTRIAN
GLOUCESTER TWSP	01/15/2006	SUNDAY	0326	SH 42	11.0	1 PEDESTRIAN
CAMDEN CITY	01/21/2006	SATURDAY	1619	SH 168	10.3	1 PEDESTRIAN
GLOUCESTER TWSP	02/03/2006	FRIDAY	0654	SH 42	9.3	1 DRIVER
CAMDEN CITY	02/19/2006	SUNDAY	2101	CR 551	32.6	1 DRIVER
BELLMAWR BORO	02/27/2006	MONDAY	1347	TURNPIKE	25.5	1 DRIVER
BERLIN BORO	03/05/2006	SUNDAY	0201	CR 689	6.1	1 PEDESTRIAN
CAMDEN CITY	03/25/2006	SATURDAY	1920	CR 608	1.0	1 PEDESTRIAN
GLOUCESTER CITY	04/06/2006	THURSDAY	1401	I-76	1.2	1 DRIVER
GLOUCESTER TWSP	04/16/2006	SUNDAY	1846	DAVISTOWN RD	0.0	1 DRIVER
CHERRY HILL TWSP	04/20/2006	THURSDAY	0743	TURNPIKE	31.1	1 DRIVER
CAMDEN CITY	05/24/2006	WEDNESDAY	1412	SH 130	28.4	1 DRIVER
PENNSAUKEN TWSP	05/28/2006	SUNDAY	1701	SH 130	34.1	1 DRIVER
BELLMAWR BORO	05/29/2006	MONDAY	2345	SH 42	14.2	1 DRIVER
BELLMAWR BORO	06/04/2006	SUNDAY	1829	I-295	25.9	1 DRIVER, 1 PASSENGER
CAMDEN CITY	06/06/2006	TUESDAY	0043	CR 603	1.2	1 PEDESTRIAN
WINSLOW TWSP	06/09/2006	FRIDAY	1427	CR 561	33.4	1 DRIVER
WINSLOW TWSP	07/04/2006	TUESDAY	2037	SH 73	8.5	1 DRIVER
VOORHEES TWSP	07/05/2006	WEDNESDAY	1430	SH 73	19.2	1 DRIVER
WINSLOW TWSP	07/06/2006	THURSDAY	2030	CR 723	1.3	1 DRIVER
WINSLOW TWSP	07/08/2006	SATURDAY	1043	SH 30	23.6	1 PASSENGER
CHERRY HILL TWSP	07/16/2006	SUNDAY	1635	SH 41	11.5	1 DRIVER
GLOUCESTER TWSP	07/21/2006	FRIDAY	2201	CR 706	9.6	1 DRIVER
BELLMAWR BORO	07/30/2006	SUNDAY	0717	SH 42	14.2	1 PASSENGER
WINSLOW TWSP	08/01/2006	TUESDAY	1507	CR 536	2.5	1 DRIVER
CHERRY HILL TWSP	08/21/2006	MONDAY	0839	CR 671	2.3	1 DRIVER
BELLMAWR BORO	08/26/2006	SATURDAY	0055	I-295	28.4	1 DRIVER
LAWNSIDE BORO	08/26/2006	SATURDAY	0957	SH 30	8.8	1 DRIVER
CAMDEN CITY	09/05/2006	TUESDAY	0310	PIERCE ST	0.0	1 DRIVER
PENNSAUKEN TWSP	09/08/2006	FRIDAY	1832	SH 70	3.2	1 DRIVER
VOORHEES TWSP	09/14/2006	THURSDAY	2050	SH 73	20.4	1 PASSENGER
CHERRY HILL TWSP	10/06/2006	FRIDAY	0725	TURNPIKE	30.4	1 DRIVER
GLOUCESTER CITY	10/21/2006	SATURDAY	2349	CR 551	30.2	1 DRIVER
WATERFORD TWSP	10/28/2006	SATURDAY	1906	SH 30	20.0	1 PEDESTRIAN
GLOUCESTER CITY	11/10/2006	FRIDAY	1110	I-76	1.3	1 PASSENGER
GLOUCESTER TWSP	11/23/2006	THURSDAY	0520	SH 168	2.6	1 DRIVER
PINE HILL BORO	11/24/2006	FRIDAY	2058	CR 687	4.0	1 PEDESTRIAN
WINSLOW TWSP	11/25/2006	SATURDAY	0318	EXPRESSWAY	37.9	1 DRIVER
CHERRY HILL TWSP	12/01/2006	FRIDAY	0815	CR 673	7.7	1 DRIVER
WINSLOW TWSP	12/10/2006	SUNDAY	1448	EXPRESSWAY	39.5	1 DRIVER
RUNNEMEDE BORO	12/16/2006	SATURDAY	1011	SH 168	5.5	1 DRIVER
STRATFORD BORO	12/22/2006	FRIDAY	0148	LONGWOOD DR	0.0	1 DRIVER
VOORHEES TWSP	12/23/2006	SATURDAY	0939	CR 544	6.2	1 DRIVER
BELLMAWR BORO	12/31/2006	SUNDAY	0002	I-76	0.2	1 DRIVER, 1 PASSENGER

### CAPE MAY COUNTY

Municipality	Date	Day	Time	Road	MP	Persons Killed
MIDDLE TWSP	02/13/2006	MONDAY	1930	CR 646	0.2	1 DRIVER
MIDDLE TWSP	02/28/2006	TUESDAY	2356	CR 620	0.6	1 DRIVER
UPPER TWSP	05/29/2006	MONDAY	0232	SH 9	26.8	1 DRIVER
MIDDLE TWSP	06/15/2006	THURSDAY	1156	SH 47	6.5	1 PASSENGER
LOWER TWSP	06/25/2006	SUNDAY	0316	SH 47	0.9	1 DRIVER
WILDWOOD CITY	06/28/2006	WEDNESDAY	0143	NEW JERSEY AVE	0.0	1 PEDESTRIAN

Municipality	Date	Day	Time	Road	MP	Persons Killed
MIDDLE TWSP	07/15/2006	SATURDAY	2207	SH 47	15.9	1 DRIVER
MIDDLE TWSP	07/16/2006	SUNDAY	1305	PARKWAY	10.9	1 PASSENGER
MIDDLE TWSP	07/28/2006	FRIDAY	0019	CR 657	5.4	1 DRIVER
DENNIS TWSP	09/15/2006	FRIDAY	1550	CR 625	0.6	1 PASSENGER
MIDDLE TWSP	09/25/2006	MONDAY	1727	PARKWAY	11.0	1 DRIVER
UPPER TWSP	09/27/2006	WEDNESDAY	2200	CR 631	5.1	1 DRIVER, 1 PASSENGER
MIDDLE TWSP	10/27/2006	FRIDAY	2335	PARKWAY	7.1	1 DRIVER
LOWER TWSP	12/14/2006	THURSDAY	0106	SH 109	0.8	1 DRIVER

### CUMBERLAND COUNTY

Municipality	Date	Day	Time	Road	MP	Persons Killed
VINELAND CITY	01/10/2006	TUESDAY	1410	CR 615	2.4	1 DRIVER
VINELAND CITY	01/18/2006	WEDNESDAY	2220	CR 540	32.8	1 PEDESTRIAN
MILLVILLE CITY	01/30/2006	MONDAY	1014	CR 627	0.5	1 DRIVER
BRIDGETON CITY	03/10/2006	FRIDAY	2154	SH 77	1.0	1 PEDESTRIAN
UPPER DEERFIELD TWS	03/17/2006	FRIDAY	2254	CR 743	0.3	1 DRIVER
MILLVILLE CITY	03/19/2006	SUNDAY	2009	SH 49	31.4	1 DRIVER
MAURICE RIVER TWSP	04/22/2006	SATURDAY	1425	SH 47	33.7	1 DRIVER, 1 PASSENGER
VINELAND CITY	05/19/2006	FRIDAY	0222	CR 674	2.7	1 DRIVER
MAURICE RIVER TWSP	05/28/2006	SUNDAY	1424	CR 550	3.1	1 DRIVER, 1 PASSENGER
COMMERCIAL TWSP	05/31/2006	WEDNESDAY	1736	CR 649	3.0	1 DRIVER
VINELAND CITY	07/01/2006	SATURDAY	2015	HANCE BRIDGE RD	0.0	1 DRIVER
MILLVILLE CITY	07/08/2006	SATURDAY	1428	CR 610	3.7	1 PEDESTRIAN
VINELAND CITY	08/11/2006	FRIDAY	2243	E. CHESTNUT	0.0	1 PEDESTRIAN
MAURICE RIVER TWSP	08/19/2006	SATURDAY	1905	SH 47	33.8	1 DRIVER
UPPER DEERFIELD TWS	08/24/2006	THURSDAY	2031	CR 540	21.9	1 PASSENGER
FAIRFIELD TWSP	08/26/2006	SATURDAY	1655	CR 722	0.5	1 DRIVER
VINELAND CITY	09/09/2006	SATURDAY	2338	PANTHER RD	0.0	1 DRIVER
MILLVILLE CITY	09/24/2006	SUNDAY	1555	SH 49	32.2	1 DRIVER
MILLVILLE CITY	10/10/2006	TUESDAY	1004	CR 670	7.6	1 DRIVER
MAURICE RIVER TWSP	11/10/2006	FRIDAY	2108	CR 644	2.9	1 DRIVER
MILLVILLE CITY	11/27/2006	MONDAY	0148	REICK AVE	0.0	1 DRIVER
MAURICE RIVER TWSP	11/28/2006	TUESDAY	1721	SH 47	33.1	1 DRIVER
MILLVILLE CITY	12/08/2006	FRIDAY	0200	CR 627	2.1	1 DRIVER, 1 PASSENGER
MAURICE RIVER TWSP	12/14/2006	THURSDAY	2019	SH 55	20.3	1 DRIVER
VINELAND CITY	12/21/2006	THURSDAY	0311	SH 55	36.2	1 PASSENGER
COMMERCIAL TWSP	12/24/2006	SUNDAY	1248	CR 767	0.8	1 PEDALCYCLIST

### ESSEX COUNTY

Municipality	Date	Day	Time	Road	MP	Persons Killed
IRVINGTON TOWN	01/19/2006	THURSDAY	0018	CR 665	2.5	1 PASSENGER
NEWARK CITY	01/20/2006	FRIDAY	1439	PORT ST	0.0	1 DRIVER
CALDWELL BORO	01/23/2006	MONDAY	1919	CR 527	81.0	1 PEDESTRIAN
NEWARK CITY	01/27/2006	FRIDAY	0209	AVON AVE	0.0	1 PASSENGER
BLOOMFIELD BORO	03/01/2006	WEDNESDAY	1255	CR 509	15.0	1 PEDESTRIAN
MILLBURN TWSP	03/21/2006	TUESDAY	1140	RIDGEWOOD RD	0.0	1 DRIVER
FAIRFIELD BORO	03/23/2006	THURSDAY	2216	SH 46	53.2	1 PEDESTRIAN
NEWARK CITY	03/25/2006	SATURDAY	0319	BROADWAY	0.0	1 PASSENGER
NEWARK CITY	03/27/2006	MONDAY	0100	BROAD ST	0.0	1 DRIVER, 1 PASSENGER
NEWARK CITY	04/06/2006	THURSDAY	1019	I-78	57.9	1 DRIVER, 1 PASSENGER
WEST ORANGE TOWN	04/14/2006	FRIDAY	1356	CR 611	1.0	1 DRIVER
NEWARK CITY	04/15/2006	SATURDAY	0157	CR 603	3.6	1 PASSENGER
NEWARK CITY	04/15/2006	SATURDAY	1640	18TH AVE	0.0	1 PASSENGER
NEWARK CITY	04/17/2006	MONDAY	1500	SH 21	4.5	1 DRIVER
NEWARK CITY	04/28/2006	FRIDAY	0038	WEST DR	0.0	1 DRIVER
EAST ORANGE CITY	05/02/2006	TUESDAY	0130	CR 508	9.4	1 PASSENGER
BLOOMFIELD BORO	05/02/2006	TUESDAY	1655	CR 655	2.0	1 DRIVER
NEWARK CITY	05/03/2006	WEDNESDAY	2127	PARKWAY	145.9	1 PEDESTRIAN
NEWARK CITY	05/03/2006	WEDNESDAY	2259	SOUTH 15TH ST	0.0	1 PASSENGER
NEWARK CITY	05/04/2006	THURSDAY	0118	WEST DR	0.0	1 DRIVER
NEWARK CITY	05/06/2006	SATURDAY	0102	SH 1	49.0	1 DRIVER
NEWARK CITY	05/06/2006	SATURDAY	2013	SH 21	1.4	1 DRIVER
NEWARK CITY	05/13/2006	SATURDAY	0036	CLINTON AVE	0.0	1 PASSENGER
ORANGE CITY	05/14/2006	SUNDAY	0256	I-280	10.2	1 PEDESTRIAN
LIVINGSTON TWSP	06/09/2006	FRIDAY	0814	CR 527	75.2	1 PASSENGER
WEST CALDWELL BORO	06/19/2006	MONDAY	1342	CR 613	3.2	1 DRIVER
IRVINGTON TOWN	06/27/2006	TUESDAY	1217	COLUMBIA AVE	0.0	1 PEDESTRIAN
FAIRFIELD BORO	07/05/2006	WEDNESDAY	0306	I-80	51.8	1 DRIVER
NEWARK CITY	07/10/2006	MONDAY	2340	CR 602	1.5	1 PEDESTRIAN
NEWARK CITY	07/13/2006	THURSDAY	2345	SH 1	13.5	1 PEDESTRIAN

Municipality	Date	Day	Time	Road	MP	Persons Killed
NEWARK CITY	07/22/2006	SATURDAY	0507	TURNPIKE	105.2	1 PASSENGER
WEST ORANGE TOWN	08/10/2006	THURSDAY	1153	I-280	8.2	1 DRIVER
NEWARK CITY	08/14/2006	MONDAY	0317	TURNPIKE	107.1	1 DRIVER
NEWARK CITY	08/24/2006	THURSDAY	0902	14TH AVE	0.0	1 PEDESTRIAN
ROSELAND BORO	08/28/2006	MONDAY	0008	I-280	5.5	1 DRIVER
EAST ORANGE CITY	09/21/2006	THURSDAY	0054	CR 509	13.5	1 DRIVER
NEWARK CITY	09/25/2006	MONDAY	1548	PATERSON ST	0.0	1 PEDESTRIAN
EAST ORANGE CITY	09/29/2006	FRIDAY	1844	FREEWAY DRIVE EAST	0.0	1 PEDESTRIAN
ORANGE CITY	10/05/2006	THURSDAY	2300	SOUTH CENTER ST	0.0	1 PEDESTRIAN
BLOOMFIELD BORO	10/07/2006	SATURDAY	2246	CR 506	0.9	1 DRIVER
NEWARK CITY	10/07/2006	SATURDAY	2345	BROAD ST	0.0	1 PEDESTRIAN
NEWARK CITY	10/14/2006	SATURDAY	0535	CR 658	0.0	1 PEDESTRIAN
NEWARK CITY	10/18/2006	WEDNESDAY	1730	13TH AVE	0.0	1 PASSENGER
NEWARK CITY	10/20/2006	FRIDAY	0800	CLIFTON AVE	0.0	1 PEDESTRIAN
NEWARK CITY	10/28/2006	SATURDAY	0152	NORTH 1ST ST	0.0	1 PASSENGER
ORANGE CITY	10/30/2006	MONDAY	0714	MAIN ST	0.0	1 PEDESTRIAN
NEWARK CITY	11/03/2006	FRIDAY	0606	TURNPIKE	105.1	1 PEDESTRIAN
NUTLEY TOWN	11/06/2006	MONDAY	1143	CR 645	3.1	1 DRIVER
NEWARK CITY	11/06/2006	MONDAY	1439	SH 21	1.6	1 PEDESTRIAN
EAST ORANGE CITY	12/24/2006	SUNDAY	1741	PARKWAY	148.5	1 DRIVER

### GLOUCESTER COUNTY

Municipality	Date	Day	Time	Road	MP	Persons Killed
WEST DEPTFORD TWSP	01/07/2006	SATURDAY	0223	ACADEMY AVE	0.0	1 DRIVER
MONROE TWSP	01/23/2006	MONDAY	1316	SH 322	30.0	1 DRIVER
EAST GREENWICH TWSP	01/30/2006	MONDAY	2007	TURNPIKE	14.2	1 DRIVER
WASHINGTON TWSP	02/03/2006	FRIDAY	0818	CR 630	1.5	1 PASSENGER
FRANKLIN TWSP	02/03/2006	FRIDAY	1307	SH 47	56.4	1 PEDESTRIAN
MONROE TWSP	03/04/2006	SATURDAY	1706	SH 322	20.9	1 DRIVER
LOGAN TWSP	03/19/2006	SUNDAY	2313	I-295	11.7	1 PEDESTRIAN
ELK TWSP	05/18/2006	THURSDAY	1604	SH 77	20.6	1 DRIVER, 1 PASSENGER
MONROE TWSP	05/19/2006	FRIDAY	1607	SH 322	30.8	1 DRIVER
SOUTH HARRISON TWSP	05/23/2006	TUESDAY	0804	CR 538	1.7	1 DRIVER
WESTVILLE BORO	06/16/2006	FRIDAY	1748	SH 130	25.2	1 DRIVER
WASHINGTON TWSP	06/16/2006	FRIDAY	1854	CR 639	3.0	1 DRIVER
EAST GREENWICH TWSP	07/01/2006	SATURDAY	2103	I-295	18.0	1 DRIVER
GLASSBORO BORO	08/13/2006	SUNDAY	2208	SH 47	64.8	1 DRIVER, 1 PASSENGER
WOOLWICH TWSP	08/21/2006	MONDAY	1837	TURNPIKE	11.9	1 PASSENGER
DEPTFORD TWSP	08/27/2006	SUNDAY	1031	SH 42	12.3	1 DRIVER
WASHINGTON TWSP	09/03/2006	SUNDAY	0201	SH 42	4.8	1 PASSENGER
FRANKLIN TWSP	09/17/2006	SUNDAY	1321	SH 40	28.8	1 DRIVER
WEST DEPTFORD TWSP	09/19/2006	TUESDAY	1300	SH 130	24.7	1 DRIVER
LOGAN TWSP	09/20/2006	WEDNESDAY	0355	SH 130	12.2	1 DRIVER
CLAYTON BORO	09/24/2006	SUNDAY	1840	CR 655	4.4	1 DRIVER
WASHINGTON TWSP	09/26/2006	TUESDAY	0700	ALDEBERAN DR	0.0	1 PASSENGER
DEPTFORD TWSP	09/27/2006	WEDNESDAY	1859	SH 47	72.9	1 DRIVER
WOOLWICH TWSP	10/04/2006	WEDNESDAY	1719	CR 694	0.6	1 DRIVER
MONROE TWSP	10/04/2006	WEDNESDAY	2018	SH 322	26.6	1 PEDESTRIAN
MONROE TWSP	10/12/2006	THURSDAY	0210	CR 536	1.0	1 PEDESTRIAN
MONROE TWSP	10/28/2006	SATURDAY	2147	SH 322	27.0	1 PEDESTRIAN
WESTVILLE BORO	11/10/2006	FRIDAY	0038	I-295	25.0	1 DRIVER
GREENWICH TWSP	11/13/2006	MONDAY	1908	CR 653	7.2	1 DRIVER
DEPTFORD TWSP	11/22/2006	WEDNESDAY	1211	CR 663	0.5	1 DRIVER
WOODBURY CITY	11/23/2006	THURSDAY	1919	SH 45	25.5	1 PEDESTRIAN
WASHINGTON TWSP	12/22/2006	FRIDAY	2012	CR 655	9.1	2 DRIVERS
DEPTFORD TWSP	12/23/2006	SATURDAY	2350	SH 47	70.5	1 PEDESTRIAN
WOOLWICH TWSP	12/25/2006	MONDAY	0536	TURNPIKE	10.5	1 DRIVER

### HUDSON COUNTY

Municipality	Date	Day	Time	Road	MP	Persons Killed
BAYONNE CITY	01/25/2006	WEDNESDAY	2345	AVE C	0.0	1 DRIVER
KEARNY TOWN	01/26/2006	THURSDAY	1515	CR 507	1.6	1 PASSENGER
HARRISON TOWN	02/02/2006	THURSDAY	1450	CR 697	0.2	1 DRIVER
WEEHAWKEN TWSP	04/03/2006	MONDAY	0530	I-495	2.6	1 DRIVER
JERSEY CITY	04/07/2006	FRIDAY	0342	PATERSON PLANK RD	0.0	1 PASSENGER
BAYONNE CITY	04/15/2006	SATURDAY	0330	CR 501	27.1	1 PASSENGER
JERSEY CITY	05/26/2006	FRIDAY	1029	CR 501	29.7	1 DRIVER
JERSEY CITY	06/01/2006	THURSDAY	2320	GARFIELD AVE	0.0	1 PASSENGER
BAYONNE CITY	06/08/2006	THURSDAY	1210	BROADWAY	0.0	1 PEDESTRIAN
BAYONNE CITY	06/27/2006	TUESDAY	2114	CR 501	18.5	1 DRIVER

Municipality	Date	Day	Time	Road	MP	Persons Killed
JERSEY CITY	07/03/2006	MONDAY	2154	CAVEN POINT RD	0.0	1 DRIVER
NORTH BERGEN TWSP	07/10/2006	MONDAY	2317	TURNPIKE	112.0	1 DRIVER
JERSEY CITY	07/24/2006	MONDAY	1002	CULVER AVE	0.0	1 PEDESTRIAN
WEST NEW YORK TOWN	07/29/2006	SATURDAY	0643	BERGENLINE AVE	0.0	1 PEDESTRIAN
BAYONNE CITY	07/31/2006	MONDAY	2140	AVE C	0.0	1 PEDESTRIAN
NORTH BERGEN TWSP	08/15/2006	TUESDAY	0343	WEST SIDE AVE	0.0	1 DRIVER
JERSEY CITY	08/18/2006	FRIDAY	2002	SIXTH ST	0.0	1 DRIVER
JERSEY CITY	08/23/2006	WEDNESDAY	0404	PACIFIC AVE	0.0	1 PEDESTRIAN
UNION CITY	08/25/2006	FRIDAY	1110	CR 501	34.5	1 PASSENGER
JERSEY CITY	09/04/2006	MONDAY	0239	SUMMIT AVE	0.0	1 PASSENGER
NORTH BERGEN TWSP	10/03/2006	TUESDAY	1937	SH 1	59.0	1 DRIVER
KEARNY TOWN	10/21/2006	SATURDAY	0339	SH 1	3.0	1 PASSENGER
JERSEY CITY	10/28/2006	SATURDAY	0300	SH 139	1.5	1 PASSENGER
HARRISON TOWN	11/10/2006	FRIDAY	1918	CR 697	0.1	1 DRIVER
KEARNY TOWN	12/01/2006	FRIDAY	0650	SH 7	0.6	1 DRIVER
BAYONNE CITY	12/04/2006	MONDAY	0041	78	0.0	1 DRIVER
KEARNY TOWN	12/08/2006	FRIDAY	2206	CR 508	13.9	1 DRIVER
KEARNY TOWN	12/18/2006	MONDAY	0547	TURNPIKE	0.0	1 PASSENGER
NORTH BERGEN TWSP	12/31/2006	SUNDAY	1809	SH 1	57.4	1 DRIVER, 1 PASSENGER

### HUNTERDON COUNTY

Municipality	Date	Day	Time	Road	MP	Persons Killed
BETHLEHEM TWSP	01/14/2006	SATURDAY	1637	I-78	8.5	1 DRIVER
CLINTON TOWN	03/26/2006	SUNDAY	0827	I-78	16.9	1 DRIVER
KINGWOOD TWSP	03/30/2006	THURSDAY	1815	SH 12	3.3	1 DRIVER, 1 PASSENGER
LAMBERTVILLE CITY	04/28/2006	FRIDAY	0828	SH 165	0.0	1 PEDESTRIAN
UNION TWSP	05/03/2006	WEDNESDAY	2345	I-78	12.5	1 DRIVER
UNION TWSP	08/02/2006	WEDNESDAY	0701	CR 579	29.4	1 DRIVER
BETHLEHEM TWSP	08/17/2006	THURSDAY	0059	I-78	8.2	1 PASSENGER
WEST AMWELL TWSP	08/17/2006	THURSDAY	2343	GOAT HILL RD	0.0	1 DRIVER
READINGTON TWSP	09/01/2006	FRIDAY	0202	SH 31	26.7	1 DRIVER
TEWKSBURY TWSP	09/11/2006	MONDAY	1123	CR 523	22.0	1 PEDALCYCLIST
CLINTON TWSP	09/24/2006	SUNDAY	1526	I-78	17.6	2 PASSENGERS
FRENCHTOWN BORO	10/11/2006	WEDNESDAY	0050	SH 12	0.1	1 DRIVER
CLINTON TWSP	10/11/2006	WEDNESDAY	2021	I-78	17.5	1 DRIVER
WEST AMWELL TWSP	10/16/2006	MONDAY	1057	ROCKTOWN-LAMBERTVILLE RD	0.0	1 DRIVER
READINGTON TWSP	10/29/2006	SUNDAY	1928	SH 22	26.5	1 PEDESTRIAN
UNION TWSP	12/05/2006	TUESDAY	1817	I-78	12.9	1 DRIVER

### MERCER COUNTY

Municipality	Date	Day	Time	Road	MP	Persons Killed
LAWRENCE TWSP	01/08/2006	SUNDAY	1821	SH 1	4.3	2 PASSENGERS
TRENTON	01/12/2006	THURSDAY	1209	OLDEN AVE	0.0	1 PEDALCYCLIST
HAMILTON TWSP	01/18/2006	WEDNESDAY	2325	I-295	65.0	1 DRIVER
HAMILTON TWSP	01/20/2006	FRIDAY	1957	KLOCKNER RD	0.0	1 PEDESTRIAN
HAMILTON TWSP	03/03/2006	FRIDAY	2152	S CLINTON AVE	0.0	1 DRIVER
TRENTON	03/10/2006	FRIDAY	1247	MULBERRY ST	0.0	1 DRIVER
HAMILTON TWSP	03/11/2006	SATURDAY	2056	I-195	1.3	1 DRIVER
WEST WINDSOR TWP	03/12/2006	SUNDAY	1450	CR 64	0.3	1 DRIVER
WEST WINDSOR TWP	03/17/2006	FRIDAY	1427	SH 1	10.0	1 DRIVER
TRENTON	03/21/2006	TUESDAY	0121	PRINCETON AVE	0.0	1 DRIVER
EAST WINDSOR TWSP	03/22/2006	WEDNESDAY	1515	WINDSOR CENTER DR	0.0	1 DRIVER
HOPEWELL TWSP	03/23/2006	THURSDAY	1816	CR 518	14.9	1 PASSENGER
HAMILTON TWSP	03/28/2006	TUESDAY	1944	CR 649	0.0	1 PEDESTRIAN
HAMILTON TWSP	04/07/2006	FRIDAY	2126	SH 33	2.5	1 PASSENGER
WASHINGTON TWP	04/11/2006	TUESDAY	1130	TURNPIKE	60.2	1 PASSENGER
HOPEWELL BORO	04/23/2006	SUNDAY	0945	CR 569	5.5	1 PASSENGER
HAMILTON TWSP	04/24/2006	MONDAY	1908	CR 524	1.6	1 PASSENGER
WASHINGTON TWP	05/06/2006	SATURDAY	0244	SH 130	65.5	1 DRIVER
WASHINGTON TWP	05/28/2006	SUNDAY	1653	I-195	6.1	1 PASSENGER
HAMILTON TWSP	06/24/2006	SATURDAY	2301	SH 33	6.0	1 PEDESTRIAN
TRENTON	07/16/2006	SUNDAY	1049	SH 29	2.0	1 DRIVER
EAST WINDSOR TWSP	07/25/2006	TUESDAY	2124	SH 130	68.8	1 PEDALCYCLIST
EWING TWSP	07/29/2006	SATURDAY	1508	HILLMAN AVE	0.0	1 DRIVER
LAWRENCE TWSP	07/30/2006	SUNDAY	0015	TURNPIKE	7.0	1 DRIVER
TRENTON	08/29/2006	TUESDAY	2110	SH 129	1.6	1 PEDESTRIAN
EAST WINDSOR TWSP	09/04/2006	MONDAY	2312	TURNPIKE	68.4	1 PASSENGER
LAWRENCE TWSP	10/08/2006	SUNDAY	1401	TURNPIKE	8.3	1 DRIVER
WEST WINDSOR TWP	11/26/2006	SUNDAY	2330	CR 535	6.9	1 DRIVER
HOPEWELL TWSP	12/01/2006	FRIDAY	1109	CR 579	10.5	1 PASSENGER

Municipality	Date	Day	Time	Road	MP	Persons Killed
TRENTON	12/18/2006	MONDAY	1836	FRANKLIN ST	0.0	1 DRIVER
HAMILTON TWSP	12/25/2006	MONDAY	1829	I-295	65.4	1 PASSENGER
WASHINGTON TWP	12/29/2006	FRIDAY	2049	SH 130	65.1	1 PEDESTRIAN

### MIDDLESEX COUNTY

Municipality	Date	Day	Time	Road	MP	Persons Killed
WOODBIDGE TWSP	01/02/2006	MONDAY	1912	SH 1	37.1	1 PEDESTRIAN
NORTH BRUNSWICK TWS	01/06/2006	FRIDAY	1745	CR 695	1.0	1 PEDESTRIAN
EAST BRUNSWICK TWSP	01/09/2006	MONDAY	1922	CHURCH LN	0.0	1 DRIVER
JAMESBURG BORO	01/22/2006	SUNDAY	1850	WEST RAILROAD AVE	1.0	1 PEDESTRIAN
SAYREVILLE BORO	01/27/2006	FRIDAY	0222	PARKWAY	123.6	1 PASSENGER
NORTH BRUNSWICK TWS	02/20/2006	MONDAY	1232	SH 1	21.4	1 DRIVER
NORTH BRUNSWICK TWS	02/20/2006	MONDAY	2255	SH 1	22.0	1 DRIVER
SAYREVILLE BORO	03/07/2006	TUESDAY	1540	CR 615	22.6	1 PEDESTRIAN
SOUTH BRUNSWICK TWS	03/12/2006	SUNDAY	0845	DAVIDSON MILL RD	0.0	1 DRIVER
OLD BRIDGE TWSP	03/21/2006	TUESDAY	1053	SH 9	126.4	1 PASSENGER
EDISON TWSP	03/22/2006	WEDNESDAY	1854	TURNPIKE	87.9	1 DRIVER
SOUTH BRUNSWICK TWS	03/27/2006	MONDAY	1715	SAND HILLS RD	0.0	1 PEDESTRIAN
PERTH AMBOY CITY	03/28/2006	TUESDAY	1515	SH 184	0.8	1 DRIVER
CRANBURY TWSP	04/01/2006	SATURDAY	0421	TURNPIKE	69.7	1 DRIVER
CARTERET BORO	04/01/2006	SATURDAY	0522	TURNPIKE	95.8	1 PASSENGER
NORTH BRUNSWICK TWS	04/04/2006	TUESDAY	2225	SH 26	2.5	1 DRIVER
DUNELLEN BORO	04/13/2006	THURSDAY	1557	MADISON AVE	0.0	1 DRIVER
PISCATAWAY TWSP	04/22/2006	SATURDAY	1100	OLD NEW BRUNSWICK RD	0.0	1 PASSENGER
EDISON TWSP	05/04/2006	THURSDAY	0545	WEST PATROL RD	0.0	1 DRIVER
WOODBIDGE TWSP	05/10/2006	WEDNESDAY	2327	SH 1	37.5	1 PEDESTRIAN
PISCATAWAY TWSP	05/17/2006	WEDNESDAY	1145	CR 501	0.9	1 PEDESTRIAN
EDISON TWSP	06/15/2006	THURSDAY	2217	CR 602	1.0	1 PEDESTRIAN
SAYREVILLE BORO	06/20/2006	TUESDAY	2108	SH 9	128.9	1 PEDESTRIAN
PERTH AMBOY CITY	07/07/2006	FRIDAY	0305	SH 35	53.2	1 DRIVER
WOODBIDGE TWSP	07/26/2006	WEDNESDAY	2108	SH 9	132.9	2 PEDESTRIANS
NEW BRUNSWICK CITY	07/30/2006	SUNDAY	0158	CR 691	0.6	1 PEDESTRIAN
EDISON TWSP	08/07/2006	MONDAY	0828	TURNPIKE	87.5	1 PEDESTRIAN
CRANBURY TWSP	08/07/2006	MONDAY	1325	TURNPIKE	72.4	1 DRIVER
WOODBIDGE TWSP	08/10/2006	THURSDAY	1635	SH 1	38.0	1 PASSENGER
NORTH BRUNSWICK TWS	08/16/2006	WEDNESDAY	0754	SH 1	26.0	1 DRIVER
PISCATAWAY TWSP	08/25/2006	FRIDAY	1023	SH 18	44.5	1 DRIVER
WOODBIDGE TWSP	09/05/2006	TUESDAY	0030	PARKWAY	134.3	1 PEDESTRIAN
OLD BRIDGE TWSP	09/05/2006	TUESDAY	1456	SH 34	26.1	1 DRIVER
EDISON TWSP	09/10/2006	SUNDAY	2247	TALMADGE RD	0.0	1 DRIVER
WOODBIDGE TWSP	09/12/2006	TUESDAY	1856	SH 35	54.4	1 DRIVER, 2 PASSENGERS
PISCATAWAY TWSP	09/22/2006	FRIDAY	2320	CR 622	4.0	1 PASSENGER
WOODBIDGE TWSP	09/26/2006	TUESDAY	1918	SH 35	54.7	1 DRIVER
OLD BRIDGE TWSP	09/29/2006	FRIDAY	2038	SH 9	124.4	1 PEDESTRIAN
WOODBIDGE TWSP	10/03/2006	TUESDAY	2222	PARKWAY	128.0	1 DRIVER
EDISON TWSP	10/07/2006	SATURDAY	0404	TURNPIKE	39.6	1 DRIVER
OLD BRIDGE TWSP	10/09/2006	MONDAY	0207	COTTRELL RD	0.0	1 DRIVER
NORTH BRUNSWICK TWS	10/11/2006	WEDNESDAY	0854	SH 26	1.2	1 DRIVER
EDISON TWSP	10/12/2006	THURSDAY	2230	TURNPIKE	85.4	1 DRIVER
EDISON TWSP	10/18/2006	WEDNESDAY	0004	PARKWAY PL	0.0	1 DRIVER, 2 PASSENGERS
NORTH BRUNSWICK TWS	10/27/2006	FRIDAY	0229	SH 1	24.6	1 DRIVER
WOODBIDGE TWSP	10/31/2006	TUESDAY	1006	CR 649	1.0	1 PEDESTRIAN
WOODBIDGE TWSP	11/02/2006	THURSDAY	1533	CR 604	7.2	1 PASSENGER
OLD BRIDGE TWSP	11/04/2006	SATURDAY	1446	SH 18	31.0	1 PASSENGER
PISCATAWAY TWSP	11/11/2006	SATURDAY	0354	CR 622	1.0	1 DRIVER
PLAINSBORO TWSP	11/21/2006	TUESDAY	1722	GEORGE DAVIDSON RD	0.0	1 PEDESTRIAN
EDISON TWSP	11/22/2006	WEDNESDAY	1842	CR 649	0.0	1 PEDESTRIAN
SAYREVILLE BORO	11/23/2006	THURSDAY	2210	SH 9	128.4	1 PEDESTRIAN
EDISON TWSP	11/24/2006	FRIDAY	0337	SH 1	29.1	1 PEDESTRIAN
NORTH BRUNSWICK TWS	11/28/2006	TUESDAY	2047	SH 1	26.4	1 DRIVER
NORTH BRUNSWICK TWS	11/30/2006	THURSDAY	0338	SH 1	21.9	1 DRIVER
SOUTH BRUNSWICK TWS	12/05/2006	TUESDAY	1550	SH 32	0.5	1 PASSENGER
WOODBIDGE TWSP	12/10/2006	SUNDAY	0425	TURNPIKE	93.2	1 DRIVER
WOODBIDGE TWSP	12/14/2006	THURSDAY	0712	CR 656	0.0	1 DRIVER, 1 PASSENGER
EDISON TWSP	12/21/2006	THURSDAY	2344	SH 27	19.4	1 PEDESTRIAN
SOUTH PLAINFIELD BO	12/22/2006	FRIDAY	2230	CR 529	3.6	1 PEDESTRIAN
NORTH BRUNSWICK TWS	12/24/2006	SUNDAY	0642	SH 130	81.7	1 PEDESTRIAN
OLD BRIDGE TWSP	12/29/2006	FRIDAY	2223	CR 520	0.0	1 DRIVER
PLAINSBORO TWSP	12/29/2006	FRIDAY	2347	SH 1	13.8	1 DRIVER



**MONMOUTH COUNTY**

Municipality	Date	Day	Time	Road	MP	Persons Killed
TINTON FALLS BORO	01/18/2006	WEDNESDAY	2117	PARKWAY	103.6	1 DRIVER
MANALAPAN TWSP	01/20/2006	FRIDAY	0507	SH 9	116.5	2 PEDESTRIANS
MIDDLETOWN TWSP	02/02/2006	THURSDAY	2235	PARKWAY	112.1	1 PEDESTRIAN
UPPER FREEHOLD TWSP	02/03/2006	FRIDAY	1612	MEIRS RD	0.0	1 PASSENGER
MIDDLETOWN TWSP	02/16/2006	THURSDAY	0522	SH 36	18.0	1 PEDESTRIAN
HOLMDEL TWSP	02/28/2006	TUESDAY	0037	LAUREL AVE	0.0	1 DRIVER
ABERDEEN TWSP	03/11/2006	SATURDAY	0425	PARKWAY	119.3	1 PASSENGER
HOLMDEL TWSP	03/28/2006	TUESDAY	2142	TELEGRAPH HILL RD	0.0	1 DRIVER, 1 PASSENGER
LONG BRANCH CITY	03/31/2006	FRIDAY	1120	NORWOOD AVE	0.0	1 DRIVER
MIDDLETOWN TWSP	04/03/2006	MONDAY	0955	CR 7	0.7	1 DRIVER
MIDDLETOWN TWSP	04/04/2006	TUESDAY	1135	EAST RD	0.0	1 PASSENGER
RED BANK BORO	04/19/2006	WEDNESDAY	2133	CR 10	1.0	1 PEDESTRIAN
MARLBORO TWSP	04/29/2006	SATURDAY	1723	TEXAS RD	1.0	1 DRIVER
HAZLET BORO	04/30/2006	SUNDAY	1135	CR 516	12.9	1 DRIVER
HOWELL TWSP	05/10/2006	WEDNESDAY	2018	SH 9	104.1	1 DRIVER
WALL TWSP	05/14/2006	SUNDAY	0650	PARKWAY	94.7	1 PASSENGER
ABERDEEN TWSP	05/27/2006	SATURDAY	2102	PARKWAY	118.9	1 DRIVER
MILLSTONE TWSP	05/28/2006	SUNDAY	0051	MILLSTONE RD	0.0	1 DRIVER
FREEHOLD TWSP	06/06/2006	TUESDAY	1458	CR 537	17.2	1 DRIVER
MILLSTONE TWSP	06/13/2006	TUESDAY	1306	CR 524	13.8	1 DRIVER
COLTS NECK TWSP	06/16/2006	FRIDAY	1056	SH 18	17.5	1 DRIVER
HOWELL TWSP	06/20/2006	TUESDAY	1734	WEST FARMS RD	1.0	1 DRIVER
UPPER FREEHOLD TWSP	07/02/2006	SUNDAY	1709	I-195	13.7	1 PASSENGER
KEANSBURG BORO	07/10/2006	MONDAY	1611	SHORE BLVD	1.0	1 PEDESTRIAN
HOWELL TWSP	07/11/2006	TUESDAY	1230	SH 9	103.0	1 PASSENGER
MARLBORO TWSP	07/21/2006	FRIDAY	1610	SH 79	4.2	1 PASSENGER
MARLBORO TWSP	07/28/2006	FRIDAY	0915	SH 18	28.6	1 PASSENGER
OCEAN TWSP	08/01/2006	TUESDAY	0124	COLD INDIAN SPRINGS RD	0.1	1 DRIVER
HOWELL TWSP	08/02/2006	WEDNESDAY	2239	SH 9	103.2	1 PEDESTRIAN
WALL TWSP	08/03/2006	THURSDAY	0126	SH 138	2.8	1 DRIVER
UPPER FREEHOLD TWSP	08/03/2006	THURSDAY	0811	I-195	9.2	1 DRIVER
WALL TWSP	08/24/2006	THURSDAY	2216	PARKWAY	97.1	1 DRIVER
FREEHOLD TWSP	09/20/2006	WEDNESDAY	0936	CR 524	16.1	1 DRIVER
MIDDLETOWN TWSP	09/29/2006	FRIDAY	1202	CR 8	1.0	1 PEDESTRIAN
COLTS NECK TWSP	10/01/2006	SUNDAY	0016	MONTROSE RD	1.0	1 DRIVER
UPPER FREEHOLD TWSP	10/04/2006	WEDNESDAY	0836	I-195	9.6	1 DRIVER
MILLSTONE TWSP	10/24/2006	TUESDAY	2030	SH 33	20.6	1 PEDESTRIAN
WALL TWSP	10/26/2006	THURSDAY	0637	SH 35	18.1	1 DRIVER
HOWELL TWSP	10/27/2006	FRIDAY	2011	SH 9	108.1	1 PEDALCYCLIST
MIDDLETOWN TWSP	10/31/2006	TUESDAY	2209	THOMPSON PARK RD	1.0	1 DRIVER
MIDDLETOWN TWSP	11/01/2006	WEDNESDAY	0811	CR 520	14.2	1 DRIVER, 1 PASSENGER
MANALAPAN TWSP	12/22/2006	FRIDAY	1544	SH 33	24.8	1 DRIVER
COLTS NECK TWSP	12/29/2006	FRIDAY	0144	HEULITT RD	0.0	1 DRIVER
UPPER FREEHOLD TWSP	12/31/2006	SUNDAY	1513	CR 539	39.4	1 DRIVER, 1 PASSENGER

**MORRIS COUNTY**

Municipality	Date	Day	Time	Road	MP	Persons Killed
MINE HILL TWSP	01/13/2006	FRIDAY	1541	SH 46	36.9	2 PASSENGERS
PARSIPPANY-TROY HIL	01/23/2006	MONDAY	1229	I-80	40.8	1 DRIVER
RIVERDALE BORO	01/26/2006	THURSDAY	1829	CR 511	7.5	1 PEDESTRIAN
PASSAIC TWSP	01/27/2006	FRIDAY	1522	CR 638	2.9	1 PEDESTRIAN
PARSIPPANY-TROY HIL	02/23/2006	THURSDAY	1850	CR 511	5.5	1 PEDESTRIAN
ROXBURY TWSP	02/23/2006	THURSDAY	2302	SH 10	0.4	1 PEDESTRIAN
PARSIPPANY-TROY HIL	03/02/2006	THURSDAY	1151	I-280	0.9	1 PASSENGER
MONTVILLE TWSP	04/02/2006	SUNDAY	1609	I-287	48.2	1 PASSENGER
ROXBURY TWSP	04/07/2006	FRIDAY	2022	CR 615	0.5	1 DRIVER
ROXBURY TWSP	04/11/2006	TUESDAY	2056	I-80	31.4	1 PASSENGER
KINNELON BORO	04/20/2006	THURSDAY	2006	CR 618	9.6	2 PEDESTRIANS
HARDING TWSP	05/28/2006	SUNDAY	0135	I-287	31.7	1 PASSENGER
EAST HONOVER TWSP	06/15/2006	THURSDAY	1056	I-280	2.5	1 DRIVER
MORRISTOWN TOWN	06/16/2006	FRIDAY	2121	I-287	35.7	1 DRIVER
MOUNT OLIVE TWSP	06/18/2006	SUNDAY	1753	SANDSHORE RD	0.0	1 DRIVER
ROCKAWAY TWSP	07/01/2006	SATURDAY	1318	I-80	34.9	1 DRIVER, 2 PASSENGERS
PARSIPPANY-TROY HIL	07/08/2006	SATURDAY	1452	I-80	44.7	1 DRIVER
ROCKAWAY TWSP	07/17/2006	MONDAY	2306	CR 664	1.5	1 DRIVER
PARSIPPANY-TROY HIL	07/24/2006	MONDAY	1118	I-80	42.2	1 DRIVER, 1 PASSENGER
MONTVILLE TWSP	07/24/2006	MONDAY	1535	I-287	49.3	1 DRIVER
MORRISTOWN TOWN	08/27/2006	SUNDAY	0007	SH 202	45.3	1 PEDESTRIAN
ROCKAWAY TWSP	09/07/2006	THURSDAY	2153	CR 513	50.5	1 DRIVER
WASHINGTON TWSP	09/08/2006	FRIDAY	1917	EAST VALLEY BROOK RD	0.0	1 DRIVER

Municipality	Date	Day	Time	Road	MP	Persons Killed
JEFFERSON TWSP	09/19/2006	TUESDAY	0724	SH 15	4.5	1 PEDESTRIAN
WASHINGTON TWSP	09/21/2006	THURSDAY	0540	CR 513	22.6	1 PEDALCYCLIST
ROXBURY TWSP	09/29/2006	FRIDAY	2200	I-80	27.3	2 DRIVERS, 1 PASSENGER
MOUNT ARLINGTON BOR	10/12/2006	THURSDAY	1448	I-80	29.9	1 DRIVER
PARSIPPANY-TROY HIL	10/28/2006	SATURDAY	1940	SH 46	49.6	1 PEDESTRIAN
PARSIPPANY-TROY HIL	12/19/2006	TUESDAY	1851	SH 46	50.3	1 PEDESTRIAN
WASHINGTON TWSP	12/21/2006	THURSDAY	2043	FAIRVIEW AVE	0.0	1 DRIVER, 1 PASSENGER
ROXBURY TWSP	12/22/2006	FRIDAY	1436	SH 46	34.5	1 PEDESTRIAN
MORRIS TWSP	12/29/2006	FRIDAY	0425	LAKE RD	0.0	1 DRIVER

### OCEAN COUNTY

Municipality	Date	Day	Time	Road	MP	Persons Killed
MANTOLOKING BOR	01/01/2006	SUNDAY	0111	SH 35	10.3	1 PEDESTRIAN
TOMS RIVER	01/03/2006	TUESDAY	0038	PARKWAY	86.9	1 PASSENGER
STAFFORD TWSP	01/07/2006	SATURDAY	0248	PARKWAY	66.3	1 DRIVER, 1 PASSENGER
STAFFORD TWSP	01/11/2006	WEDNESDAY	0706	EAST BAY AVE	0.0	1 PEDESTRIAN
JACKSON TWSP	01/23/2006	MONDAY	0100	CR 571	12.8	1 DRIVER
MANCHESTER TWSP	01/25/2006	WEDNESDAY	0646	SH 70	45.2	1 DRIVER
BERKELEY TWSP	01/29/2006	SUNDAY	1831	CR 530	25.7	1 DRIVER
LAKEWOOD TWSP	02/08/2006	WEDNESDAY	1833	CR 528	30.9	1 PEDESTRIAN
LAKEWOOD TWSP	02/15/2006	WEDNESDAY	1902	SH 9	103.0	1 PEDESTRIAN
MANCHESTER TWSP	02/15/2006	WEDNESDAY	2306	CR 530	20.9	1 DRIVER
TOMS RIVER	02/21/2006	TUESDAY	1900	CR 549	1.6	1 DRIVER
TOMS RIVER	03/03/2006	FRIDAY	1820	CR 549	1.8	1 PEDESTRIAN
TOMS RIVER	03/11/2006	SATURDAY	1344	OAK AVE	0.0	1 PASSENGER
BRICK TWSP	03/26/2006	SUNDAY	0604	PARKWAY	94.1	1 DRIVER
MANCHESTER TWSP	03/29/2006	WEDNESDAY	2058	CR 547	1.0	1 DRIVER
LACEY TWSP	04/02/2006	SUNDAY	1527	PARKWAY	71.2	2 PASSENGERS
TOMS RIVER	04/05/2006	WEDNESDAY	1501	SH 9	97.0	1 DRIVER
BERKELEY TWSP	04/07/2006	FRIDAY	1403	NORTHERN BLVD	0.0	1 PASSENGER
BRICK TWSP	04/24/2006	MONDAY	0608	PARKWAY	93.1	1 DRIVER
TOMS RIVER	04/24/2006	MONDAY	0801	CR 549	4.9	1 DRIVER
TOMS RIVER	05/09/2006	TUESDAY	1742	PARKWAY	86.0	1 DRIVER
TOMS RIVER	05/14/2006	SUNDAY	0624	SH 9	97.6	1 DRIVER
JACKSON TWSP	05/26/2006	FRIDAY	0643	CR 547	3.9	1 DRIVER
LAKEWOOD TWSP	06/15/2006	THURSDAY	2100	PINE ST	0.0	1 PEDESTRIAN
BARNEGAT TWSP	06/16/2006	FRIDAY	1535	GEORGETOWN BLVD	0.0	1 DRIVER
JACKSON TWSP	06/18/2006	SUNDAY	1320	CR 638	1.1	1 DRIVER
LAKEWOOD TWSP	06/28/2006	WEDNESDAY	1739	RIDGE AVE	0.0	1 DRIVER
LAKEWOOD TWSP	07/01/2006	SATURDAY	1423	NEW HAMPSHIRE AVE	0.0	1 DRIVER
TOMS RIVER	07/02/2006	SUNDAY	1050	PARKWAY	82.7	1 DRIVER
JACKSON TWSP	07/15/2006	SATURDAY	1301	CR 528	20.0	1 DRIVER
MANCHESTER TWSP	07/19/2006	WEDNESDAY	2125	SH 70	46.0	1 PASSENGER
BRICK TWSP	08/06/2006	SUNDAY	1201	CR 549	3.1	1 DRIVER
BARNEGAT TWSP	08/06/2006	SUNDAY	1354	SH 9	75.8	1 PEDESTRIAN
JACKSON TWSP	08/09/2006	WEDNESDAY	1528	CR 527	18.0	1 DRIVER
BERKELEY TWSP	08/13/2006	SUNDAY	0240	SH 9	87.1	1 PEDESTRIAN
LITTLE EGG HARBOR T	08/14/2006	MONDAY	1521	CR 539	3.8	1 DRIVER
POINT PLEASANT BEAC	09/07/2006	THURSDAY	1835	RIVER AVE	0.0	1 PEDALCYCLIST
TOMS RIVER	09/09/2006	SATURDAY	0720	CR 549	12.0	1 DRIVER
LAKEWOOD TWSP	09/13/2006	WEDNESDAY	1339	CR 623	5.2	1 PASSENGER
BEACHWOOD BORO	09/16/2006	SATURDAY	0445	PARKWAY	79.4	1 DRIVER
JACKSON TWSP	10/01/2006	SUNDAY	1318	DIAMOND RD	0.0	1 DRIVER
LAKEWOOD TWSP	10/08/2006	SUNDAY	1534	PARKWAY	91.2	1 PASSENGER
LACEY TWSP	10/10/2006	TUESDAY	1919	CR 614	11.7	1 PEDESTRIAN
TOMS RIVER	10/12/2006	THURSDAY	0835	CR 527	5.3	1 DRIVER
BRICK TWSP	10/16/2006	MONDAY	2304	CR 16	0.0	1 DRIVER
BRICK TWSP	11/05/2006	SUNDAY	1620	PARKWAY	93.5	1 DRIVER
JACKSON TWSP	11/05/2006	SUNDAY	2042	CR 638	5.1	1 DRIVER
JACKSON TWSP	11/09/2006	THURSDAY	1550	BUTTERFLY RD	0.0	1 DRIVER
EAGLESWOOD TWSP	11/12/2006	SUNDAY	2315	SH 9	65.8	1 PEDESTRIAN
LACEY TWSP	11/13/2006	MONDAY	2345	PARKWAY	74.8	1 DRIVER
LAKEWOOD TWSP	11/15/2006	WEDNESDAY	1935	CR 528	30.6	1 PEDESTRIAN
LAKEWOOD TWSP	11/18/2006	SATURDAY	1711	SH 70	50.5	1 PEDESTRIAN
STAFFORD TWSP	11/23/2006	THURSDAY	0305	PARKWAY	66.4	1 DRIVER
BARNEGAT TWSP	11/23/2006	THURSDAY	1908	PARKWAY	67.4	1 PASSENGER
JACKSON TWSP	12/01/2006	FRIDAY	1751	CR 526	23.8	1 PEDESTRIAN
LITTLE EGG HARBOR T	12/02/2006	SATURDAY	2032	SH 9	65.4	1 PEDESTRIAN
MANTOLOKING BOR	12/12/2006	TUESDAY	2222	SH 35	11.0	1 DRIVER
BRICK TWSP	12/13/2006	WEDNESDAY	2105	CR 631	2.7	1 PEDESTRIAN
MANCHESTER TWSP	12/17/2006	SUNDAY	1714	CR 530	21.8	1 PEDESTRIAN
BERKELEY TWSP	12/29/2006	FRIDAY	2028	CR 530	23.7	1 DRIVER

**PASSAIC COUNTY**

Municipality	Date	Day	Time	Road	MP	Persons Killed
WAYNE TWSP	01/07/2006	SATURDAY	1919	SH 202	68.9	1 PEDESTRIAN
HALEDON BORO	01/23/2006	MONDAY	1952	CR 675	1.0	1 PEDESTRIAN
CLIFTON CITY	02/05/2006	SUNDAY	0045	PARKWAY	153.8	1 DRIVER
WAYNE TWSP	02/05/2006	SUNDAY	0456	CR 504	11.1	1 DRIVER
CLIFTON CITY	02/07/2006	TUESDAY	2159	CR 624	0.9	1 DRIVER
WAYNE TWSP	02/15/2006	WEDNESDAY	1323	CR 666	1.9	1 PASSENGER
PATERSON CITY	02/17/2006	FRIDAY	0309	I-80	59.6	1 DRIVER
HAWTHORNE BORO	03/14/2006	TUESDAY	1657	CR 665	1.2	1 PEDESTRIAN
RINGWOOD BORO	03/15/2006	WEDNESDAY	1546	CR 511	27.6	1 DRIVER
WAYNE TWSP	04/23/2006	SUNDAY	2116	SH 46	56.8	1 PEDESTRIAN
PATERSON CITY	04/30/2006	SUNDAY	2349	SH 20	2.4	1 DRIVER
WAYNE TWSP	05/17/2006	WEDNESDAY	2025	I-80	53.8	1 DRIVER
WAYNE TWSP	05/19/2006	FRIDAY	1041	CR 689	1.7	2 PASSENGERS
WANAQUE BORO	05/20/2006	SATURDAY	1724	CR 511	22.0	1 PEDESTRIAN
PATERSON CITY	05/27/2006	SATURDAY	1450	SH 19	2.4	1 DRIVER
HAWTHORNE BORO	07/05/2006	WEDNESDAY	2039	SH 208	3.5	1 DRIVER
CLIFTON CITY	07/19/2006	WEDNESDAY	0003	SH 3	2.2	1 PEDESTRIAN
PASSAIC CITY	07/29/2006	SATURDAY	2058	SH 21	3.5	1 DRIVER
WEST MILFORD TWSP	07/31/2006	MONDAY	0347	CANISTEAR RD	0.0	1 DRIVER
BLOOMINGDALE BORO	08/09/2006	WEDNESDAY	0316	VAN DAM AVE	0.0	1 DRIVER
CLIFTON CITY	08/27/2006	SUNDAY	0603	SH 161	0.3	1 DRIVER
WEST MILFORD TWSP	09/10/2006	SUNDAY	1438	SH 23	24.1	1 DRIVER
PATERSON CITY	09/18/2006	MONDAY	0121	BROADWAY	0.0	1 PEDESTRIAN
WAYNE TWSP	09/28/2006	THURSDAY	1344	SH 202	65.0	1 PASSENGER
HALEDON BORO	10/10/2006	TUESDAY	1925	BARBOUR ST	0.0	1 PEDESTRIAN
PATERSON CITY	10/28/2006	SATURDAY	1752	GETTY AVE	0.0	1 DRIVER
CLIFTON CITY	11/03/2006	FRIDAY	1832	CR 601	1.0	1 PEDESTRIAN
CLIFTON CITY	11/22/2006	WEDNESDAY	1809	SH 46	60.5	1 DRIVER
PATERSON CITY	11/27/2006	MONDAY	1524	RYERSON AVE	0.0	1 PEDESTRIAN
PATERSON CITY	12/10/2006	SUNDAY	0850	CR 639	3.8	1 PEDESTRIAN
WEST MILFORD TWSP	12/17/2006	SUNDAY	1757	BONTER RD	0.0	1 PASSENGER

**SALEM COUNTY**

Municipality	Date	Day	Time	Road	MP	Persons Killed
CARNEYS POINT TWSP	01/08/2006	SUNDAY	1357	CR 551	3.0	1 DRIVER
ALLOWAY TWSP	01/25/2006	WEDNESDAY	0820	CR 540	11.7	1 DRIVER, 1 PASSENGER
PENNSVILLE TWSP	02/18/2006	SATURDAY	2022	I-295	0.9	1 DRIVER
UPPER PITTSBORO TW	02/19/2006	SUNDAY	0319	CR 635	7.7	1 DRIVER
CARNEYS POINT TWSP	03/03/2006	FRIDAY	0332	TURNPIKE	4.1	1 PEDESTRIAN
ALLOWAY TWSP	03/05/2006	SUNDAY	1744	CR 611	1.3	1 DRIVER
OLDMANS TWSP	05/02/2006	TUESDAY	1131	CR 601	3.5	1 PASSENGER
PITTSBORO TWSP	05/03/2006	WEDNESDAY	1539	CR 690	6.5	1 DRIVER
ALLOWAY TWSP	05/05/2006	FRIDAY	1251	CR 657	4.3	1 PEDESTRIAN
PITTSBORO TWSP	07/13/2006	THURSDAY	2014	CR 674	0.6	1 DRIVER
UPPER PITTSBORO TW	09/30/2006	SATURDAY	0930	THREE BRIDGES RD	0.0	1 PASSENGER
PENNSVILLE TWSP	10/07/2006	SATURDAY	0527	CR 551	2.3	1 PASSENGER
PITTSBORO TWSP	10/13/2006	FRIDAY	1642	CR 674	0.5	1 DRIVER
PILESBORO TWSP	11/11/2006	SATURDAY	1117	SH 40	14.1	2 DRIVERS, 3 PASSENGERS

**SOMERSET COUNTY**

Municipality	Date	Day	Time	Road	MP	Persons Killed
BRIDGEWATER TWSP	01/05/2006	THURSDAY	1044	I-287	20.1	1 PEDESTRIAN
SOMERVILLE BORO	01/09/2006	MONDAY	1418	MERCER ST	0.0	1 DRIVER
WARREN TWSP	01/27/2006	FRIDAY	0314	I-78	35.7	2 DRIVERS
FRANKLIN TWSP	01/30/2006	MONDAY	1659	RANDOLPH RD	0.0	1 DRIVER
FRANKLIN TWSP	02/07/2006	TUESDAY	1807	CR 617	1.8	1 PASSENGER
NORTH PLAINFIELD BO	03/08/2006	WEDNESDAY	1718	NORWOOD AVE	0.0	1 DRIVER
HILLSBOROUGH TWSP	04/30/2006	SUNDAY	0315	CR 533	26.0	1 DRIVER
PEAPACK-GLADSTONE B	05/02/2006	TUESDAY	1316	SH 206	80.9	1 DRIVER
FRANKLIN TWSP	05/02/2006	TUESDAY	1530	CR 615	1.3	1 DRIVER
NORTH PLAINFIELD BO	05/11/2006	THURSDAY	2135	SH 27	46.0	1 PEDALCYCLIST
FRANKLIN TWSP	05/12/2006	FRIDAY	0019	I-287	12.3	1 DRIVER
BEDMINSTER TWSP	05/12/2006	FRIDAY	1041	I-78	27.7	1 DRIVER
BRIDGEWATER TWSP	07/08/2006	SATURDAY	1955	I-287	14.8	1 DRIVER
MONTGOMERY TWSP	07/16/2006	SUNDAY	1939	SH 206	63.0	1 DRIVER
FRANKLIN TWSP	08/13/2006	SUNDAY	2315	CR 623	3.2	1 DRIVER
MANVILLE BORO	09/17/2006	SUNDAY	2005	WEST CAMPLAIN RD	0.0	1 PEDESTRIAN

Municipality	Date	Day	Time	Road	MP	Persons Killed
NORTH PLAINFIELD BO	10/08/2006	SUNDAY	0200	SH 22	44.4	1 PEDESTRIAN
BRIDGEWATER TWSP	10/13/2006	FRIDAY	0052	I-287	14.5	1 DRIVER
BRIDGEWATER TWSP	11/23/2006	THURSDAY	1553	I-287	14.8	1 PEDESTRIAN

### SUSSEX COUNTY

Municipality	Date	Day	Time	Road	MP	Persons Killed
ANDOVER TWSP	01/26/2006	THURSDAY	1436	CR 616	3.5	1 DRIVER
STANHOPE BORO	03/19/2006	SUNDAY	0932	SH 183	1.1	1 PASSENGER
SPARTA TWSP	03/25/2006	SATURDAY	0637	SH 15	14.5	1 DRIVER
WANTAGE TWSP	04/04/2006	TUESDAY	2157	LOWER UNIONVILLE RD	0.0	1 DRIVER
VERNON TWSP	04/17/2006	MONDAY	1152	CR 517	52.0	1 DRIVER, 1 PASSENGER
MONTAGUE TWSP	05/15/2006	MONDAY	1604	CR 675	2.2	1 DRIVER
HARDYSTON TWSP	06/14/2006	WEDNESDAY	1920	CR 631	2.5	1 DRIVER
VERNON TWSP	07/09/2006	SUNDAY	1428	CR 641	0.4	1 DRIVER
VERNON TWSP	07/09/2006	SUNDAY	2247	CR 644	0.4	1 DRIVER
LAFAYETTE TWSP	07/19/2006	WEDNESDAY	2138	SH 15	19.0	1 DRIVER
MONTAGUE TWSP	07/29/2006	SATURDAY	1008	SH 23	52.2	1 DRIVER
VERNON TWSP	08/12/2006	SATURDAY	1105	SH 94	45.3	1 DRIVER
NEWTON TOWN	08/17/2006	THURSDAY	1556	SH 206	109.2	1 DRIVER, 1 PASSENGER
LAFAYETTE TWSP	09/16/2006	SATURDAY	2102	CR 623	3.2	1 DRIVER, 1 PASSENGER
SPARTA TWSP	09/17/2006	SUNDAY	1007	CR 605	8.3	1 DRIVER
STILLWATER TWSP	12/03/2006	SUNDAY	0300	OLD FOUNDRY RD	0.0	1 DRIVER
WANTAGE TWSP	12/24/2006	SUNDAY	0013	LAYTON RD	0.0	1 DRIVER

### UNION COUNTY

Municipality	Date	Day	Time	Road	MP	Persons Killed
UNION TWSP	01/07/2006	SATURDAY	1820	SH 82	2.0	1 DRIVER
UNION TWSP	01/31/2006	TUESDAY	0519	SH 82	1.9	1 DRIVER
ELIZABETH CITY	02/01/2006	WEDNESDAY	1048	GROVE ST	1.0	1 PEDESTRIAN
UNION TWSP	02/13/2006	MONDAY	1332	I-78	53.5	1 DRIVER
ELIZABETH CITY	03/04/2006	SATURDAY	0311	SOUTH FIFTH ST	0.0	1 DRIVER
SCOTCH PLAINS TWSP	03/11/2006	SATURDAY	1155	MARTINE AVE EXT	0.0	1 PASSENGER
ELIZABETH CITY	03/12/2006	SUNDAY	0321	SH 1	44.0	1 DRIVER
UNION TWSP	04/04/2006	TUESDAY	2143	PARKWAY	140.7	1 DRIVER
PLAINFIELD CITY	04/22/2006	SATURDAY	0425	SH 28	14.1	1 PEDESTRIAN
RAHWAY CITY	05/09/2006	TUESDAY	2259	SH 27	28.9	1 PEDALCYCLIST
ELIZABETH CITY	05/14/2006	SUNDAY	0328	SH 1	43.0	1 PEDESTRIAN
ROSELLE BORO	05/18/2006	THURSDAY	2110	SH 27	32.3	2 PEDESTRIANS
SCOTCH PLAINS TWSP	05/28/2006	SUNDAY	2256	SH 22	48.2	1 PEDESTRIAN
ELIZABETH CITY	05/30/2006	TUESDAY	1725	SECOND AVE	0.0	1 DRIVER
LINDEN CITY	06/16/2006	FRIDAY	1127	SH 1	41.8	1 DRIVER, 1 PASSENGER
PLAINFIELD CITY	06/18/2006	SUNDAY	2134	SH 28	14.2	1 PEDALCYCLIST
ELIZABETH CITY	07/03/2006	MONDAY	0835	SH 1	44.8	1 DRIVER
LINDEN CITY	07/14/2006	FRIDAY	0127	SH 1	40.7	1 DRIVER
HILLSIDE TWSP	08/06/2006	SUNDAY	0619	SH 22	57.4	1 DRIVER
RAHWAY CITY	08/16/2006	WEDNESDAY	1826	SH 27	29.2	1 PEDESTRIAN
ELIZABETH CITY	08/22/2006	TUESDAY	0509	SH 1	44.3	1 PEDALCYCLIST
WESTFIELD TOWN	08/28/2006	MONDAY	1143	SH 28	20.0	1 PEDESTRIAN
UNION TWSP	08/29/2006	TUESDAY	0539	I-78	51.5	1 PASSENGER
SPRINGFIELD TWSP	08/31/2006	THURSDAY	2004	I-78	49.9	1 DRIVER
UNION TWSP	09/02/2006	SATURDAY	0033	SH 22	53.1	1 PASSENGER
ELIZABETH CITY	09/06/2006	WEDNESDAY	1916	MCLESTER AVE	0.0	1 DRIVER
ELIZABETH CITY	09/15/2006	FRIDAY	2006	SH 1	44.3	1 PEDESTRIAN
HILLSIDE TWSP	09/24/2006	SUNDAY	2309	SH 22	58.1	1 DRIVER
ELIZABETH CITY	11/05/2006	SUNDAY	2113	SH 1	44.3	1 PEDESTRIAN
BERKELEY HEIGHTS TW	11/22/2006	WEDNESDAY	2254	I-78	42.8	3 PASSENGERS
ELIZABETH CITY	12/06/2006	WEDNESDAY	1606	SH 27	33.6	1 DRIVER
ELIZABETH CITY	12/22/2006	FRIDAY	0354	SH 1	43.5	1 PASSENGER

### WARREN COUNTY

Municipality	Date	Day	Time	Road	MP	Persons Killed
POHATCONG TWSP	01/31/2006	TUESDAY	1441	CR 627	8.0	1 DRIVER
LOPATCONG TWSP	02/04/2006	SATURDAY	1602	SH 22	2.4	1 DRIVER, 1 PASSENGER
HARDWICK TWSP	02/13/2006	MONDAY	1604	CR 606	7.5	1 DRIVER
FRELINGHUYSEN TWSP	02/16/2006	THURSDAY	1045	SH 94	11.5	1 DRIVER
FRANKLIN TWSP	03/23/2006	THURSDAY	2325	CR 632	2.8	1 DRIVER
HOPE TWSP	06/26/2006	MONDAY	2000	I-80	11.4	1 DRIVER
GREENWICH TWSP	09/13/2006	WEDNESDAY	1151	RICHLINE RD	0.0	1 DRIVER
WHITE TWSP	09/29/2006	FRIDAY	2332	SH 46	10.1	1 PEDESTRIAN

<b>Municipality</b>	<b>Date</b>	<b>Day</b>	<b>Time</b>	<b>Road</b>	<b>MP</b>	<b>Persons Killed</b>
LOPATCONG TWSP	10/17/2006	TUESDAY	1656	SH 22	2.9	1 DRIVER, 1 PASSENGER
HARMONY TWSP	10/19/2006	THURSDAY	1132	CR 519	35.5	1 DRIVER
BLAIRSTOWN TWSP	10/19/2006	THURSDAY	1435	SH 94	5.7	1 DRIVER
HOPE TWSP	11/16/2006	THURSDAY	0115	CR 519	49.6	1 PASSENGER
WHITE TWSP	12/20/2006	WEDNESDAY	0410	CR 623	6.3	1 DRIVER, 1 PASSENGER

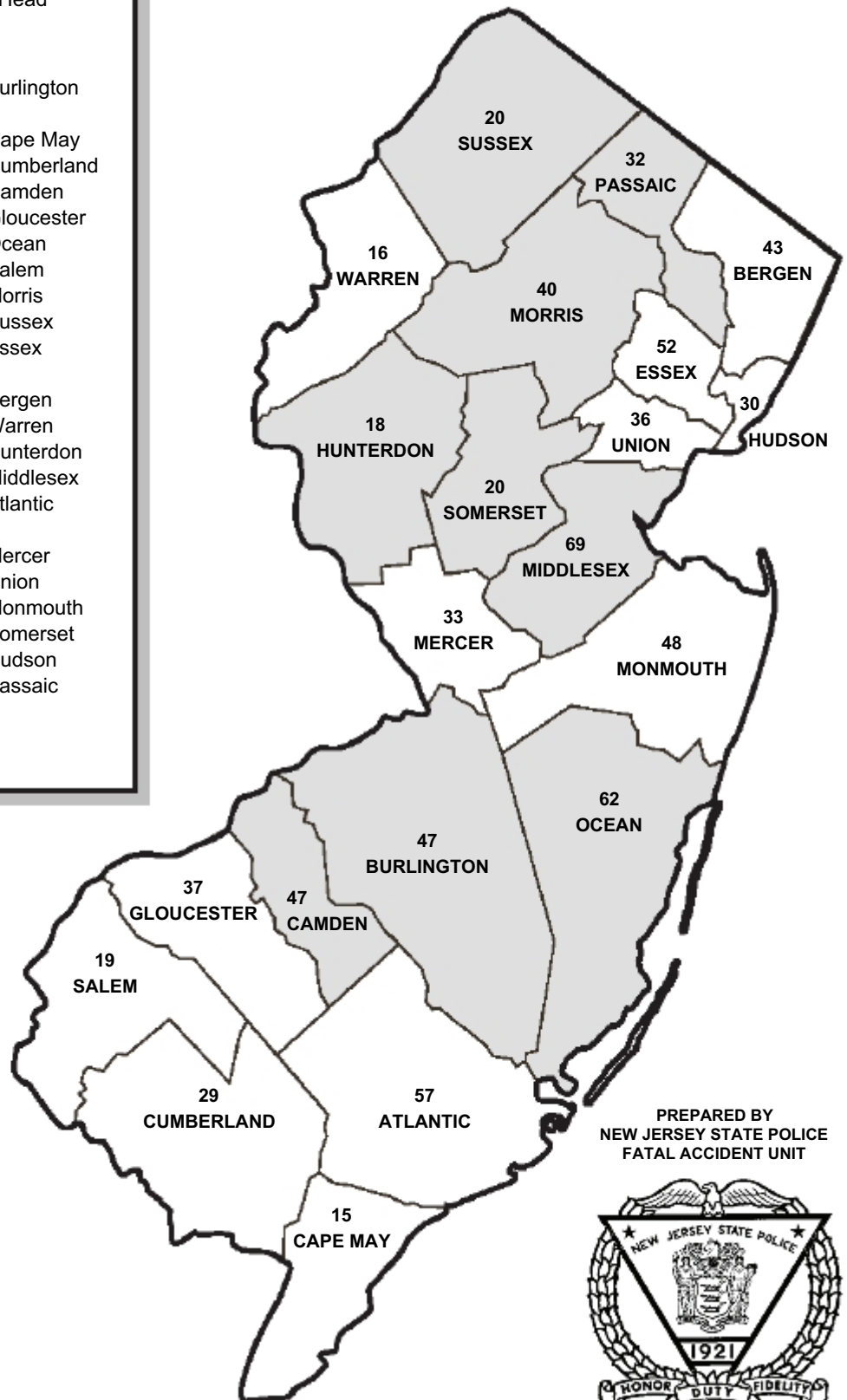
# FATAL CRASHES BY COUNTY FOR 2006

## FATAL ACCIDENT UNIT

Sgt. Eric Heitmann - 5066, Unit Head

### Areas of Responsibility

Sgt. Robert Foulks - 5052 Unit Data Coordinator	Burlington
Sgt. John McMahon - 5380	Cape May Cumberland
Tpr. I Michael Rizol - 5202	Camden Gloucester
Tpr. I Shamus Williams - 5329	Ocean Salem
Tpr. I Robert Babitz - 5332	Morris Sussex
Tpr. I Kevin Bartels - 5557	Essex
Tpr. I John Sandner - 5644	Bergen Warren
Tpr. II Steven Slimowicz - 5789	Hunterdon Middlesex
Tpr. Matthew Razukas - 5939	Atlantic
Tpr. Patrick Brady - 5951	Mercer Union
Tpr. Gerrit Nieuwenhuizen - 6144	Monmouth Somerset
Tpr. Derek DiStaso - 6186	Hudson Passaic
Civilian - Mrs. A. J. Testa FARS Analyst - Sandra Jenkins FARS Analyst - Lisa Glodowski	



PREPARED BY  
NEW JERSEY STATE POLICE  
FATAL ACCIDENT UNIT



### LEGEND

Shaded Areas   
Denote Increase from 2005.