



NEW JERSEY TEEN DRIVERS

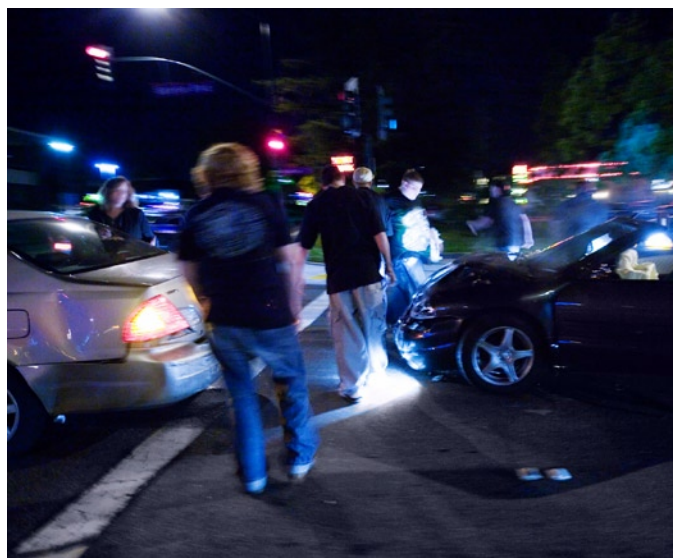
16 TO 20 YEARS OF AGE

2008

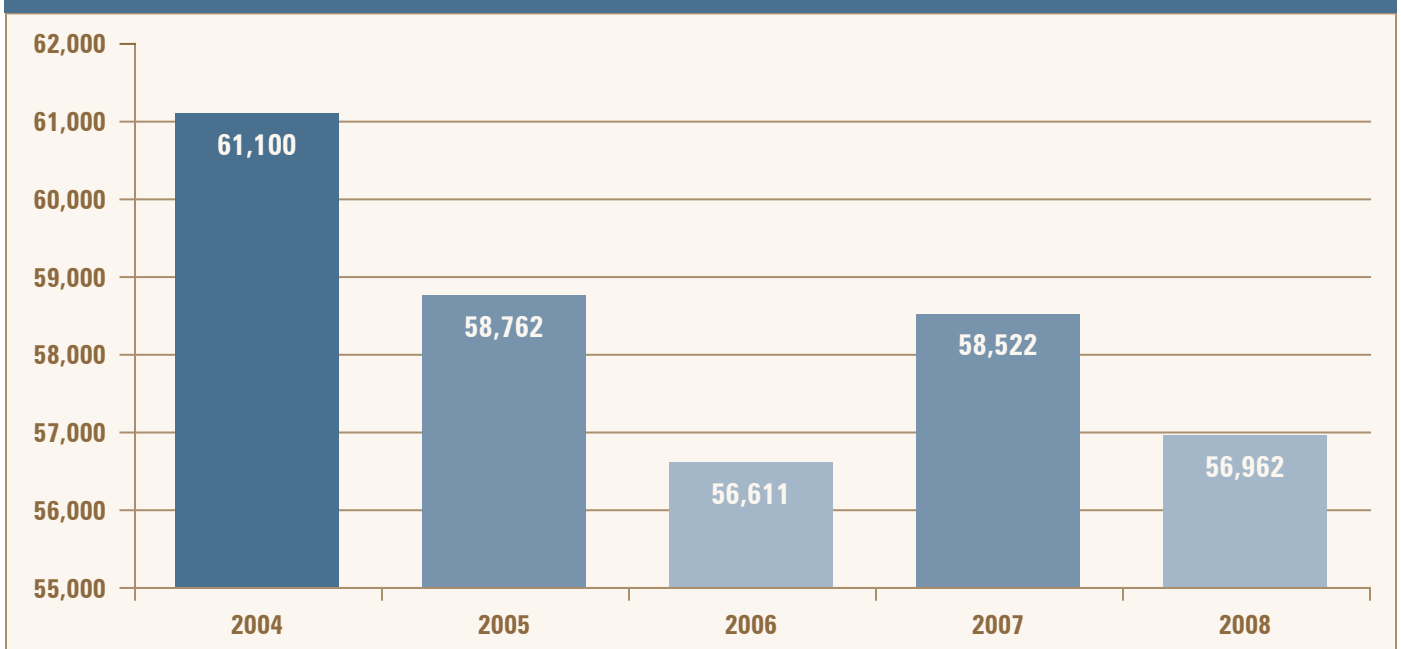
Motor vehicle crashes are the leading cause of death nationwide for teens between the ages of 15 and 20. In New Jersey, teen drivers, defined as 16 to 20 year olds, are also disproportionately represented in motor vehicle crashes. The data used for this report was compiled from the traffic crash record system maintained by the New Jersey Department of Transportation (DOT). Population data was obtained from the U.S Census Bureau's 2008 population estimates and licensed driver data from the New Jersey Motor Vehicle Commission (MVC).

According to the findings of this report, teen drivers represent the largest contingent of motorists involved in crashes in New Jersey. There were more male teen drivers than female teen drivers involved in crashes. More crashes involving teens occurred in May than any other month and on Friday than any other day of the week. The most dangerous time on the road for teen drivers was between 3 and 6 p.m. Over half of the contributing circumstances associated with teen driving crashes were due to human error, in particular driver inattention/distraction and unsafe speed.

In 2008, 473,965 drivers were involved in crashes in New Jersey. Twelve percent or 56,962 (Graph 1) of those drivers were between 16 and 20 years of age. During the past five years, the number of young drivers involved in motor vehicle crashes has decreased, with the exception of 2007. However this one year upward swing reversed itself in 2008 as crashes decreased 3 percent from 58,522 in 2007 to 56,962 last year.



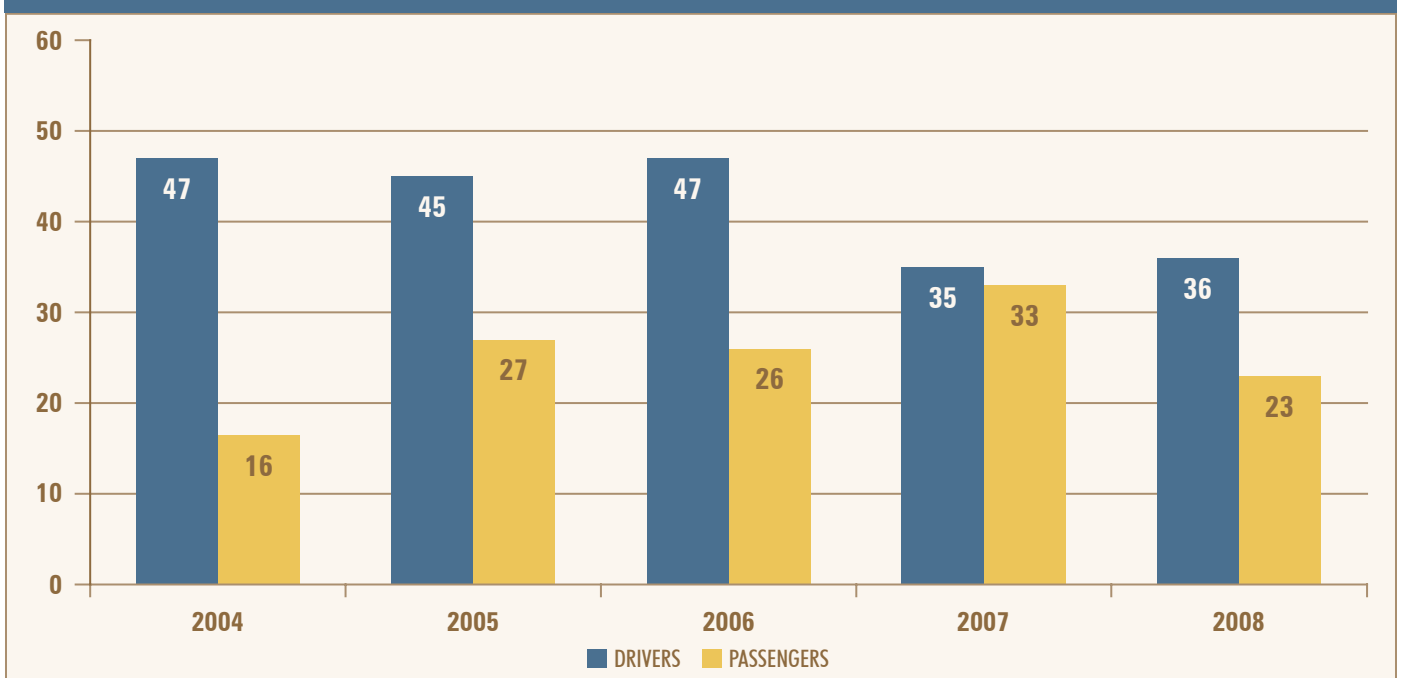
Graph 1: Teen Drivers Involved in Motor Vehicle Crashes in New Jersey, 2004 - 2008



The number of teen drivers and teen passengers driven by teens killed between 2004 and 2008 is presented in Graph 2. During this five year period, more teen drivers

than teen passengers were killed. In 2008, there was a 13 percent decrease in teen driver and teen passenger fatalities from 68 in 2007 to 59 in 2008.

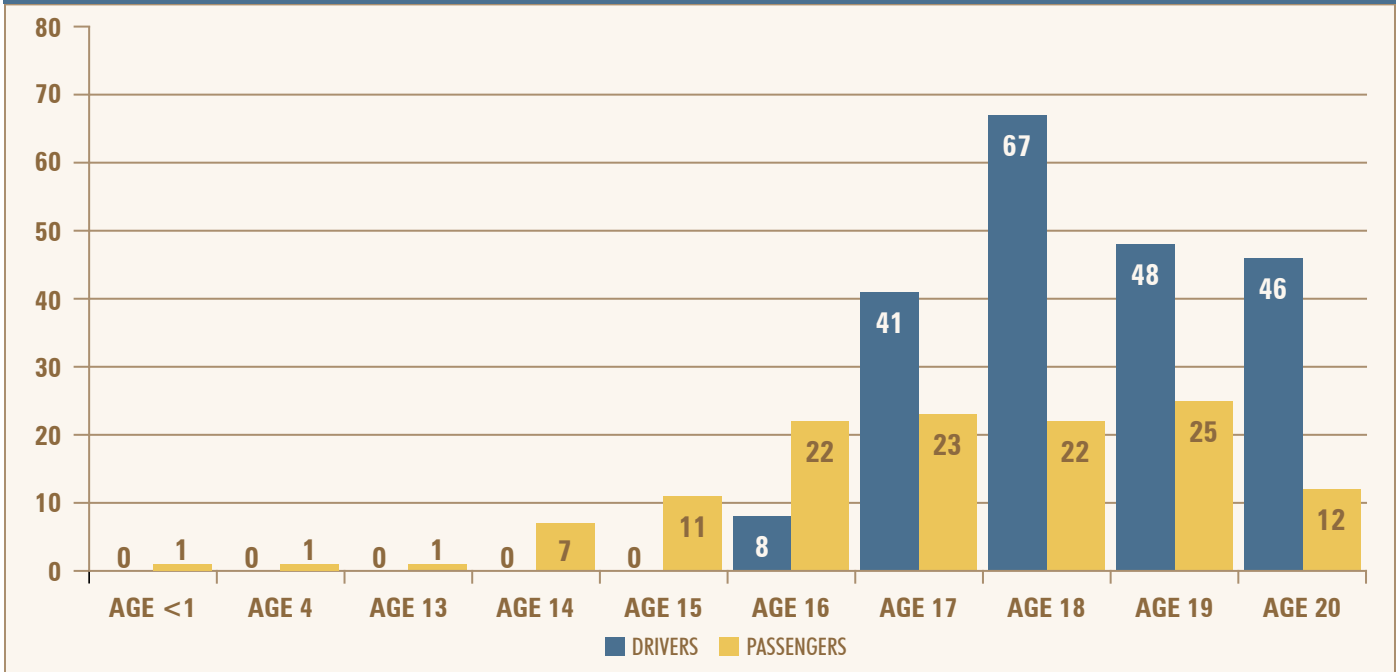
Graph 2: Teen Driver and Teen Passenger Fatalities by Year, 2004 - 2008



During this five-year period, most of the teen drivers killed in motor vehicle crashes were 18 years of age (67), followed by 19 (48) and 20 (46) years old, respectively. Teen driver fatalities gradually increased from 16 to

18 years of age and then gradually decreased. Teen passenger fatalities gradually increased from 13 to 16 years of age and then decreased for 20 year olds. Most of the teen passenger fatalities involved 19 year olds.

Graph 3: Teen Driver and Teen and Younger Passenger Fatalities by Age, 2004 - 2008



Teen drivers are over-represented in crashes. In 2008, there were 6 million licensed drivers in New Jersey. Teen drivers accounted for 357,239 or 6 percent of the driving population, but were involved in 56,962 or 12.3 percent of all crashes. Graph 4 shows the percentage of licensed drivers and driver involvement in crashes by age group. In general, drivers under 40 years of age

were overrepresented in crashes. However, the largest gap between the percent of drivers involved in crashes and licensed drivers was found for 16 to 20 year olds. This group was followed closely by 21 to 25 year olds who represented 12.3 percent of drivers in crashes and accounted for 8.3 percent of drivers with licenses.

Graph 4: Percentage of Licensed Drivers and Drivers by Age Involved in Crashes, 2008

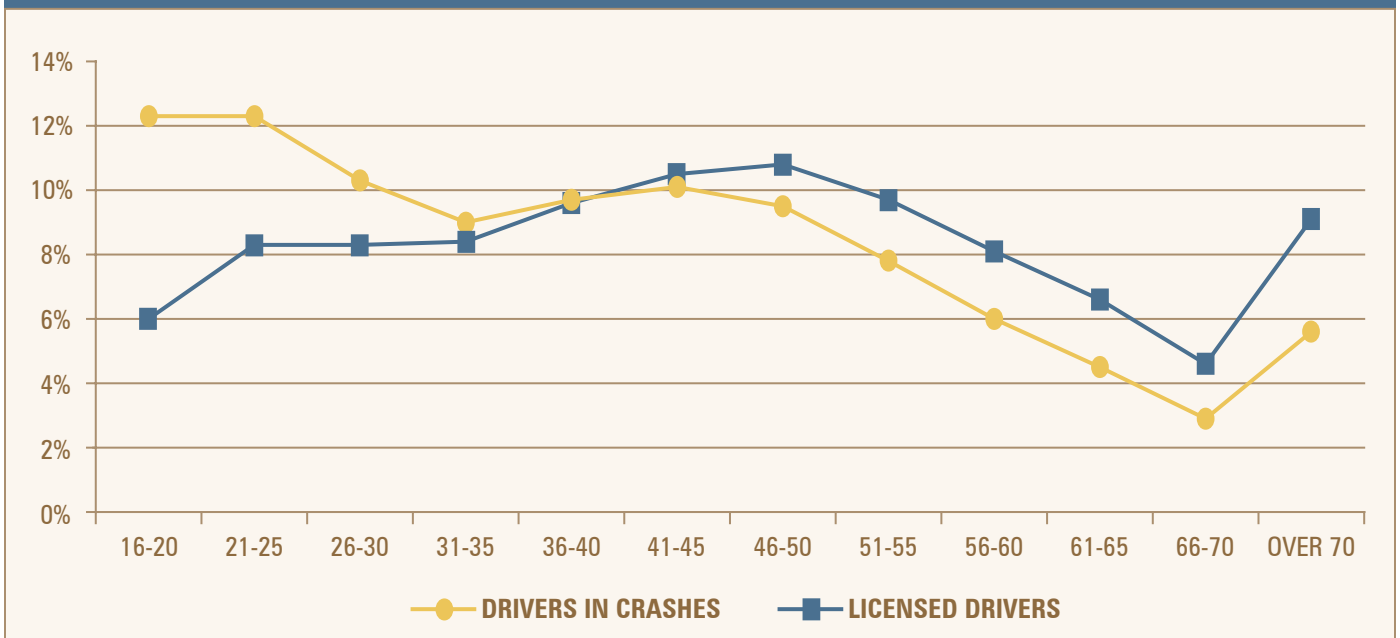


Table 1 depicts the number of drivers involved in crashes by age group, the number of licensed drivers by age group and the driver involvement rate per 100 licensed drivers by age group in 2008. In New Jersey, for every 100 licensed drivers, eight were involved in crashes. However, for teen drivers, the crash involvement rate

was 16 or double the rate for all drivers. In other words, one out of six young drivers was involved in a motor vehicle crash. By contrast, elderly drivers over 70 years of age had the lowest crash risk. One out of twenty drivers in this group was involved in a crash.

Table 1: Number of Drivers Involved in Crashes, Number of Licensed Drivers and Crash Involvement Rate Per 100 Licensed Drivers by Age Group

AGE GROUP	TOTAL NUMBER OF DRIVERS INVOLVED IN CRASHES	TOTAL NUMBER OF LICENSED DRIVERS	DRIVER CRASH INVOLVEMENT RATE PER 100 LICENSED DRIVERS
16-20	56,962	357,239	16
21-25	56,689	500,026	11
26-30	47,694	497,001	10
31-35	41,668	503,195	8
36-40	44,886	576,266	8
41-45	46,589	627,469	7
46-50	44,095	646,149	7
51-55	36,043	583,870	6
56-60	27,935	486,229	6
61-65	20,620	396,074	5
66-70	13,323	278,825	5
OVER 70	25,894	548,339	5
TOTAL KNOWN AGE	462,398	6,000,682	8
MISSING INFORMATION	11,567		
TOTAL	473,965		

Table 2 shows the involvement of teen drivers in motor vehicle crashes by gender. Males were involved in 54 percent of crashes compared to 45 percent for females.

Table 2: Number and Percentage of Teen Drivers Involved in Crashes by Gender, 2008

GENDER	NUMBER	PERCENTAGE
FEMALE	25,653	45 %
MALE	31,038	54.5 %
UNKNOWN	271	.5 %
TOTAL	56,962	100 %

The physical condition of teen drivers involved in motor vehicle crashes, ranging from complaint of pain to killed, is shown in Table 3. Data is available for only 10,784 of the 56,962 teen drivers involved

in crashes. Out of this number, 0.04 percent of teen drivers were killed, 1.6 percent were incapacitated, 20.9 percent suffered a moderate injury, and 74.5 percent complained of pain.

Table 3: Number and Percentage of Teen Drivers Involved in Crashes by Physical Condition, 2008*

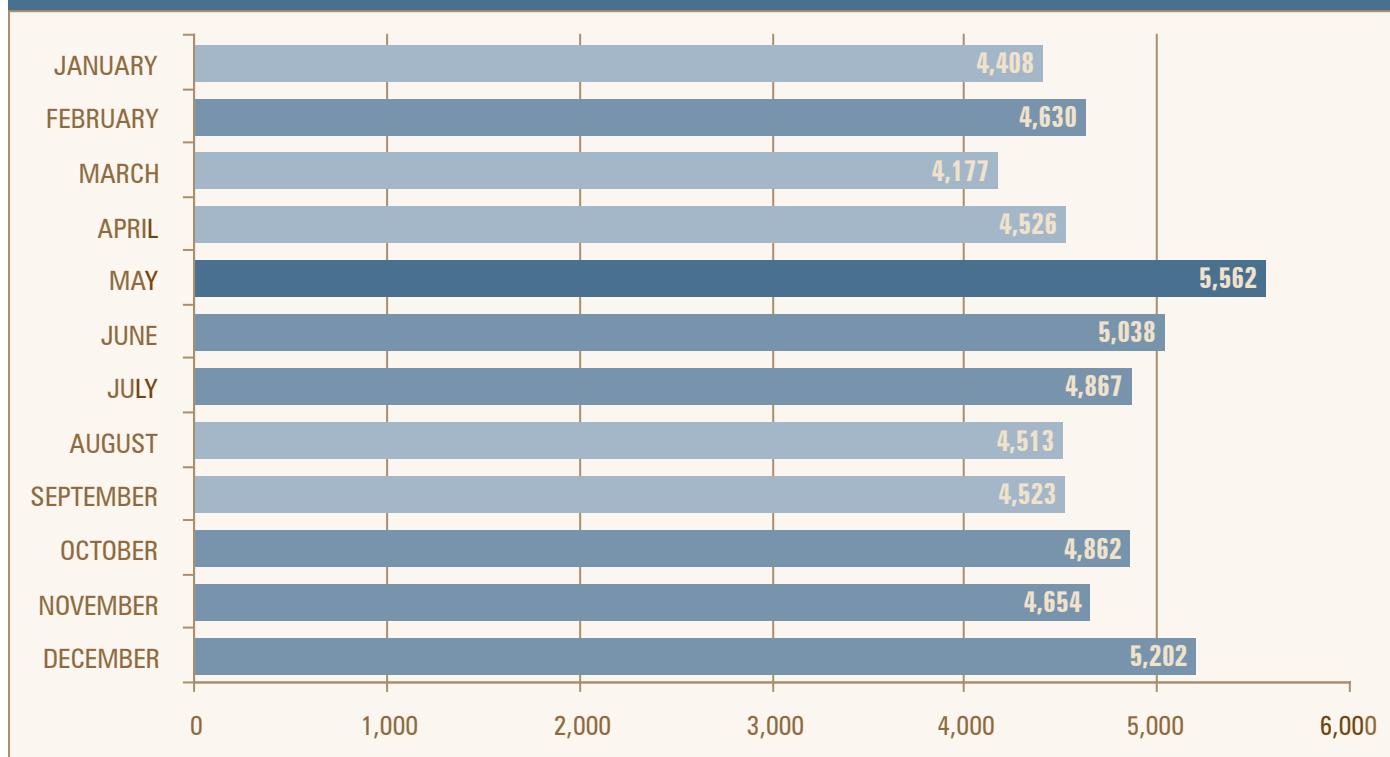
PHYSICAL CONDITION	DRIVERS	PERCENTAGE
KILLED	46	0.4 %
INCAPACITATED	170	1.6 %
MODERATE INJURY	2,251	20.9 %
COMPLAINT OF PAIN	8,044	74.5 %
UNKNOWN	283	2.6 %
TOTAL	10,794	100 %

* Missing Information on 46,168 drivers

Graph 5 shows teen driver crashes by month. There was an over-representation of teen driver involvement in crashes in May (5,562), followed by December (5,202) and June (5,038). The fewest number of teen crashes (4,177) occurred in March. This is a change

from 2007 when most teen drivers involved in crashes occurred in June, followed by October and December. The fewest number of teen driver crashes in 2007 occurred in February.

Graph 5: Number of Teen Drivers Involved in Crashes by Month, 2008



Teen driver involvement in crashes by day of week and month is shown in Table 4. Most teen drivers were involved in crashes on Friday (10,358), while the fewest occurred on Sunday (5,971). The greatest number of

teen drivers involved in crashes on a single day (1,281) was recorded on a Friday in May, while the day with the fewest occurred on a Sunday (387) in January.

Table 4: Number of Teen Drivers Involved in Crashes by Month and Day of Week, 2008

	MONDAY	TUESDAY	WEDNESDAY	THURSDAY	FRIDAY	SATURDAY	SUNDAY	TOTAL	%
JANUARY	511	709	704	739	838	520	387	4,408	7.7 %
FEBRUARY	542	1,019	530	589	998	549	403	4,630	8.1 %
MARCH	697	488	550	592	667	736	447	4,177	7.3 %
APRIL	656	776	708	663	719	636	368	4,526	7.9 %
MAY	657	730	644	802	1,281	900	548	5,562	9.8 %
JUNE	806	672	790	635	802	646	687	5,038	8.8 %
JULY	638	746	791	857	687	650	498	4,867	8.5 %
AUGUST	543	563	559	611	883	667	687	4,513	7.9 %
SEPTEMBER	676	708	493	550	996	648	452	4,523	7.9 %
OCTOBER	512	766	717	772	907	741	447	4,862	8.5 %
NOVEMBER	523	612	684	729	756	765	585	4,654	8.2 %
DECEMBER	739	918	938	679	824	642	462	5,202	9.1 %
TOTAL	7,500	8,707	8,108	8,218	10,358	8,100	5,971	56,962	100.0 %

Table 5 shows teen driver involvement in crashes by time of day and day of the week. Most teen driver involvement occurred between the hours of 3 and

6 p.m. (26.8%), unchanged from 2007, and not surprising since many teens are on the road at this time leaving school, going to and from school-related

Table 5: Number of Teen Driver Crashes by Time of Day and Day of Week, 2008*

DAY/TIME	MONDAY	TUESDAY	WEDNESDAY	THURSDAY	FRIDAY	SATURDAY	SUNDAY	TOTAL	%
MID-3AM	186	190	227	182	282	619	589	2,275	4.0 %
3AM-6AM	81	69	96	70	133	275	261	985	1.7 %
6AM-9AM	845	986	975	934	897	373	316	5,326	9.4 %
9AM-NOON	824	867	806	819	1,062	870	652	5,900	10.4 %
NOON-3PM	1,566	1,916	1,643	1,647	2,021	1,740	1,268	11,801	20.8 %
3PM-6PM	2,125	2,633	2,271	2,352	2,795	1,692	1,335	15,203	26.8 %
6PM-9PM	1,159	1,352	1,376	1,370	1,711	1,312	908	9,188	16.2 %
9PM-MID	676	653	667	811	1,407	1,174	610	5,998	10.6 %
TOTAL	7,462	8,666	8,061	8,185	10,308	8,055	5,939	56,676	100 %
%	13.2 %	15.3 %	14.2 %	14.4 %	18.8 %	14.2 %	10.5 %	100 %	

* Missing Information on 287 drivers

activities/practices, and going to work. Nearly half of all teen driver involvement in crashes occurred between Noon and 6 p.m. The greatest number of teen crashes occurred between 3 and 6 p.m. on Friday (2,795), followed by 3 to 6 p.m. on Wednesday (2,633). The fewest number of teen crashes occurred on Tuesday between 3 and 6 a.m. (69).

Contributing circumstances for teen driver crashes are shown in Table 6. Almost all of the known contributing circumstances were the result of human error (driver actions), with more than half caused by driver inattention/distracted (23,047) and unsafe speed (5,350). Other prevalent circumstances included following too closely (4,320) and failure to yield the right of way (4,024). This remains unchanged from 2007.

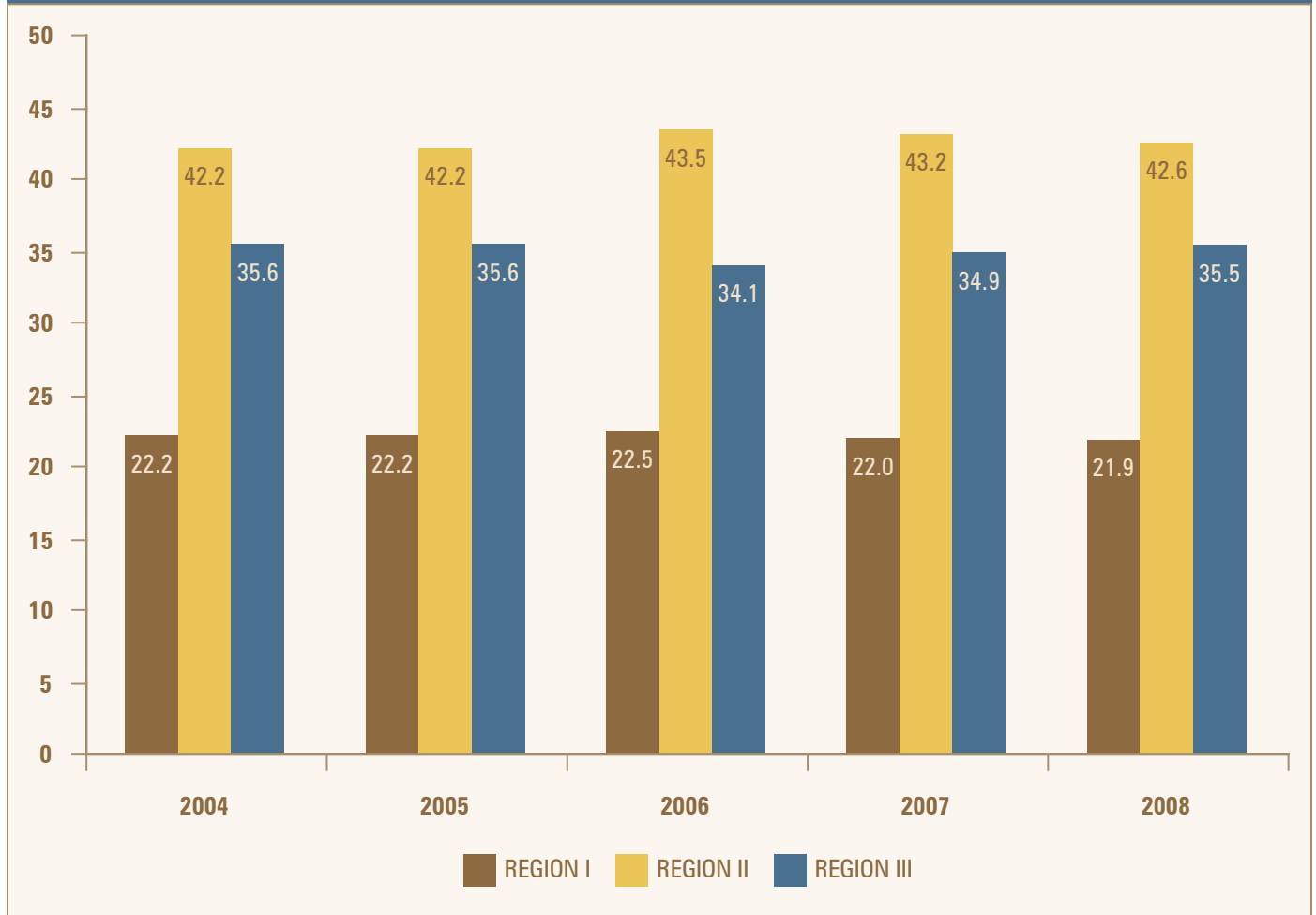
Table 6: Contributing Circumstances in Teen Driver Crashes, 2008

DRIVER ACTIONS	DRIVER INATTENTION	23,047
	UNSAFE SPEED	5,350
	FOLLOWING TOO CLOSELY	4,320
	FAILED TO YIELD RIGHT OF WAY TO VEHICLE/PEDESTRIAN	4,024
	BACKING UNSAFELY	2,114
	FAILED TO OBEY TRAFFIC CONTROL DEVICE	1,617
	IMPROPER LANE CHANGE	1,362
	IMPROPER TURNING	1,311
	IMPROPER PASSING	676
	FAILURE TO KEEP RIGHT	457
	IMPROPER PARKING	178
	IMPROPER USE/FAILED TO USE TURN SIGNAL	94
	WRONG WAY	82
	IMPROPER USE/NO LIGHTS	36
	OTHER DRIVER ACTIONS	1,637
NONE	17,624	
VEHICLE FACTORS	BRAKES	305
	TIRES	169
	STEERING	118
	WHEELS	58
	WINDOWS/WINDOWSHIELD	36
	DEFECTIVE LIGHTS	11
	VEHICLE COUPLING/HITCH/SAFETY CHAINS	5
	MIRRORS	3
	WIPERS	3
	OTHER VEHICLE FACTORS	186
ROAD/ENVIRONMENT FACTORS	ROAD SURFACE CONDITION	2,634
	ANIMALS IN ROADWAY	984
	PHYSICAL OBSTRUCTIONS (VIEWING, ETC)	207
	OBSTRUCTION/DEBRIS IN ROAD	195
	SUNGLARE	166
	RUTS, HOLES, BUMPS	48
	CONTROL DEVICE DEFECTIVE OR MISSING	16
	IMPROPER/INADEQUATE LANE MARKINGS	5
	IMPROPER WORK ZONE	2
	OTHER ROADWAY FACTORS	96
	UNKNOWN	282

The New Jersey Division of Highway Traffic Safety (DHTS) separates the state into three regions: Region I includes Atlantic, Burlington, Camden, Cape May, Cumberland, Gloucester, and Salem Counties; Region II includes Hunterdon, Mercer, Middlesex, Monmouth, Ocean, Somerset, and Union Counties; and Region III includes Bergen, Essex, Hudson, Morris, Passaic, Sussex, and Warren Counties. The greatest percentage of teen

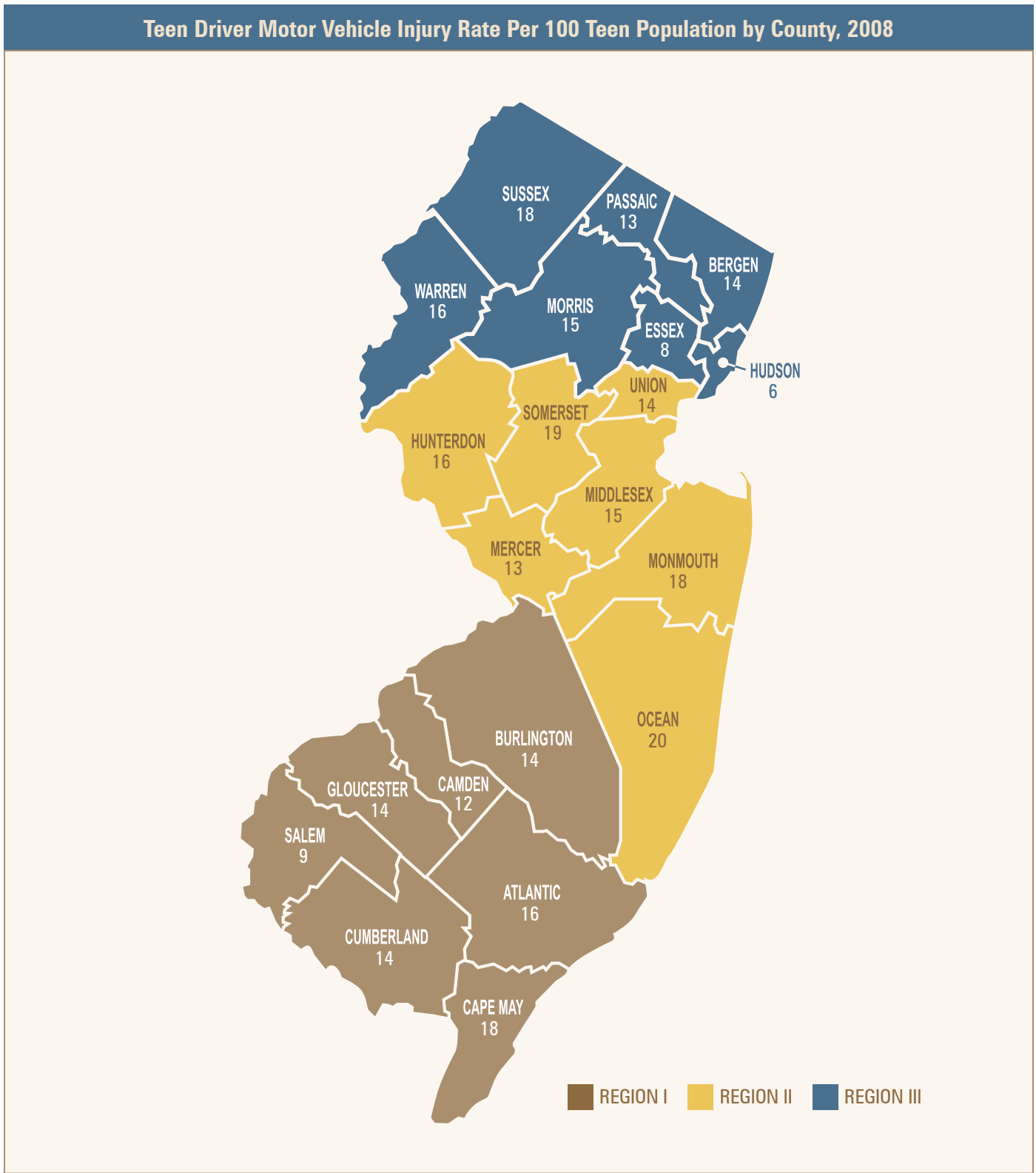
driver crashes (42.6) occurred in Region II, a number that is relatively unchanged from 2004 when teens in this region accounted for 42.2 percent of all crashes. The Region III percentage of teen driver involvement in crashes remained the same at 35 percent, a finding that has not changed since 2004. The lowest percentage of teen driver crash involvement was found in Region I at 21.9 percent, a slight drop from 2004 (22.2 percent).

Graph 6: Percentage of Teen Drivers Involved in Crashes by DHTS Region, 2004-2008



The New Jersey map details teen driver motor vehicle injury rates per 100 teen population by county. The statewide teen driver injury rate is 14 per 100 population. The counties with the highest rates were: Ocean (20), Somerset (19), Cape May (18), Sussex

(18), Monmouth (18), Warren (16), Atlantic (16), and Hunterdon (16). It should be noted that this rate does not take into account an increased level of summer tourism in seashore areas. By contrast, Hudson County had the lowest rate at 6 per 100 population.



The number of all drivers and teen drivers, and teen drivers as a percentage of all drivers involved in crashes by county, is presented in Table 7. Statewide teen drivers accounted for 12 percent of all drivers involved in crashes. Middlesex County (5,906) had the greatest number of teen drivers involved in crashes, followed by Bergen County (5,476). Sussex, Gloucester, Cape

May, and Ocean Counties had a significantly higher percent of teen drivers involved in crashes than the rest of the State. In Sussex County, one out of five drivers involved in a crash was a teen driver, while in Hudson County one out of sixteen drivers was a teen.

Table 7: Number of All Drivers, Teen Drivers, and Teen Drivers as a Percentage of All Drivers Involved in Crashes by County, 2008

COUNTY	CRASHES ALL DRIVERS	CRASHES	
		TEEN DRIVERS	% OF TOTAL CRASHES
ATLANTIC	16,383	2,023	12.3 %
BERGEN	50,936	5,476	10.8 %
BURLINGTON	20,637	2,713	13.1 %
CAMDEN	26,773	3,350	12.5 %
CAPE MAY	4,595	755	16.4 %
CUMBERLAND	7,367	1,091	14.8 %
ESSEX	44,988	4,004	8.9 %
GLOUCESTER	12,702	2,132	16.8 %
HUDSON	29,487	1,782	6.0 %
HUNTERDON	6,210	814	13.1 %
MERCER	20,821	2,520	12.1 %
MIDDLESEX	50,145	5,906	11.8 %
MONMOUTH	33,669	5,123	15.2 %
MORRIS	27,001	3,483	12.9 %
OCEAN	27,608	4,406	16.0 %
PASSAIC	28,060	3,477	12.4 %
SALEM	2,531	376	14.9 %
SOMERSET	19,447	2,319	11.9 %
SUSSEX	6,154	1,226	19.9 %
UNION	32,820	3,196	9.7 %
WARREN	5,631	790	14.0 %
TOTAL	473,965	56,962	12.0 %

The largest number of single vehicle crashes in 2008, 5,011, occurred in Middlesex County, followed by 4,890 in Bergen County. Statewide, 16 percent of single vehicle crashes involved young drivers. The greatest number of single vehicle teen driver crashes

occurred in Monmouth County (865), followed by Middlesex County (753). Sussex and Cape May Counties had significantly higher averages of single vehicle teen driver crashes at 22.7 and 20.7 percent, respectively.

Table 8: Number of All Single Vehicle Crashes, Single Vehicle Crashes Involving Teen Drivers, and Percentage of Single Vehicle Crashes Involving Teen Drivers by County, 2008

COUNTY	SINGLE VEHICLE CRASHES	
	ALL DRIVERS	YOUNG DRIVERS
ATLANTIC	2,356	382
BERGEN	4,890	733
BURLINGTON	3,118	548
CAMDEN	3,011	487
CAPE MAY	762	158
CUMBERLAND	1,209	209
ESSEX	4,113	499
GLOUCESTER	1,967	367
HUDSON	2,214	161
HUNTERDON	1,702	267
MERCER	2,600	379
MIDDLESEX	5,011	753
MONMOUTH	4,606	865
MORRIS	3,939	701
OCEAN	3,324	619
PASSAIC	2,996	500
SALEM	713	131
SOMERSET	2,844	419
SUSSEX	1,739	395
UNION	2,997	358
WARREN	1,511	244
TOTAL	57,622	9,175

The number of teen drivers involved in crashes by region and municipality between 2004 and 2008 is presented in tables 9, 10 and 11.

Table 9 shows the number of teen drivers involved in motor vehicle crashes in Region I (Atlantic, Burlington, Camden, Cape May, Cumberland, Gloucester, and

Salem Counties). During the five-year period, 22 percent of all teen driver crashes in the state occurred in this region. The first ten municipalities listed in the table below accounted for 34 percent of all teen driver crashes in the region. Cherry Hill had the most teen driver crashes (2,945) of all municipalities in the region.

Table 9: Teen Drivers Involved in Motor Vehicle Crashes in Region I, 2004-2008

REGION I TOWNS	2004	2005	2006	2007	2008	TOTAL
CHERRY HILL	611	546	580	617	591	2,945
GLOUCESTER TWP	599	543	582	638	562	2,924
VINELAND	634	589	566	588	522	2,899
WASHINGTON (GLOUCESTER)	580	493	493	563	504	2,633
CAMDEN	526	492	452	504	441	2,415
EGG HARBOR TWP	347	363	345	412	384	1,851
EVESHAM	359	370	352	351	320	1,752
DEPTFORD	383	347	298	351	364	1,743
HAMILTON	369	285	304	334	312	1,604
MOUNT LAUREL	307	283	294	275	303	1,462
ATLANTIC CITY	312	295	267	316	269	1,459
PENNSAUKEN	264	313	278	260	211	1,326
GALLOWAY	249	265	269	274	243	1,300
MILLVILLE	295	197	217	227	226	1,162
WINSLOW	220	206	219	208	217	1,070
MIDDLE	219	227	198	182	173	999
MEDFORD	240	190	203	177	173	983
MONROE	184	199	153	197	207	940
MOORESTOWN	166	190	185	156	173	870
GLASSBORO	157	164	170	183	186	860
BELLMAWR	199	166	187	155	135	842
BURLINGTON TWP	140	158	150	176	156	780
WILLINGBORO	92	159	169	177	163	760
FRANKLIN	149	160	165	124	121	719
PEMBERTON TWP	150	134	130	126	146	686
VOORHEES	193	156	3	141	184	677

REGION I TOWNS (continued)	2004	2005	2006	2007	2008	TOTAL
OCEAN CITY	145	144	139	106	110	644
HAMMONTON	100	152	137	107	141	637
BRIDGET	154	122	118	115	111	620
PLEASANTVILLE	130	124	106	126	117	603
COLLINGSWOOD	125	132	109	102	131	599
DELTRAN	140	99	134	104	112	589
MANTUA	112	119	116	127	103	577
MAPLE SHADE	132	112	110	118	93	565
LOWER	122	109	123	92	117	563
UPPER	106	142	119	105	82	554
HARRISON	86	108	109	122	126	551
WOODBURY	130	123	112	87	87	539
WEST DEPTFORD	100	95	133	98	94	520
GLOUCESTER	96	89	149	72	52	458
SOUTHAMPTON	90	97	79	88	92	446
BURLINGTON	99	96	83	88	72	438
MOUNT HOLLY	108	90	104	71	62	435
BORDENTOWN TWP	76	85	89	87	79	416
DENNIS	90	91	85	72	78	416
RUNNEMEDE	96	79	79	79	81	414
UPPER DEERFIELD	83	74	94	67	93	411
LINDENWOLD	69	89	89	75	78	400
WESTAMPTON	94	94	101	61	48	398
CINNAMINSON	89	93	73	78	63	396
WILDWOOD	81	105	68	69	64	387
PENNSVILLE	73	86	75	79	68	381
MANSFIELD	76	82	82	60	76	376
SOMERS POINT	91	60	67	34	121	373
LUMBERTON	50	89	64	69	74	346
CARNEYS POINT	80	60	47	71	63	321
HADDON TWP	65	72	76	55	48	316
ABSECON	52	57	72	62	66	309
CLEMENTON	63	54	40	67	66	290

REGION I TOWNS (continued)	2004	2005	2006	2007	2008	TOTAL
BUENA VISTA	53	53	63	56	59	284
WATERFORD	38	65	51	74	56	284
SPRINGFIELD	65	63	46	58	38	270
PITTSBORO	70	41	53	39	57	260
PINE HILL	44	49	39	59	58	249
NORTHFIELD	50	37	61	46	53	247
MAGNOLIA	60	46	38	54	45	243
SOMERDALE	45	58	49	50	40	242
FLORENCE	47	48	55	45	45	240
TABERNACLE	37	62	40	54	39	232
MOUNT EPHRAIM	51	33	49	48	51	232
VENTNOR	53	43	48	54	33	231
LOGAN	46	33	45	49	47	220
MAURICE RIVER	48	44	40	47	37	216
PILESBORO	49	43	38	47	38	215
HAINESPORT	36	44	47	38	46	211
HADDON	45	42	48	40	33	208
AUDUBON BOROUGH	42	45	32	37	47	203
LINWOOD	55	46	40	26	34	201
MEDFORD LAKES	45	34	39	36	46	200
ELK	31	41	43	38	44	197
NORTH WILDWOOD	49	39	31	42	35	196
UPPER PITTSBORO	50	28	42	37	36	193
CLAYTON	37	33	58	20	42	190
STRATFORD	50	38	32	28	35	183
WESTVILLE	44	37	31	33	35	180
EGG HARBOR	34	34	39	24	47	178
BARRINGTON	39	30	37	30	39	175
GIBBSBORO	8	36	46	46	33	169
PITMAN	28	35	28	34	38	163
NEW HANOVER	44	35	30	13	36	158
DEERFIELD	39	26	25	39	27	156
EAST GREENWICH	31	38	28	30	29	156

REGION I TOWNS (continued)	2004	2005	2006	2007	2008	TOTAL
CHESTERFIELD	37	29	31	31	23	151
MARGATE	14	38	25	37	36	150
EASTAMPTON	34	30	35	23	27	149
EDGEWATER PARK	37	16	29	31	36	149
BASS RIVER	31	37	32	30	17	147
BUENA	28	33	35	32	15	143
BRIGANTINE	27	29	28	28	30	142
RIVERSIDE	27	19	10	41	37	134
MULLICA	27	30	28	22	25	132
BERLIN TWP	32	32	27	15	19	125
FAIRFIELD	42	24	18	24	15	123
PAULSBORO	32	23	19	27	22	123
PALMYRA	29	31	21	24	16	121
PEMBERTON	27	19	22	31	19	118
SEA ISLE CITY	18	21	28	19	31	117
SHAMONG	22	24	27	15	25	113
BERLI	26	24	15	14	33	112
CAPE MAY	20	22	16	27	27	112
HOPEWELL	16	23	27	20	21	107
WOODBURY HEIGHTS	19	17	12	33	25	106
PENNS GROVE	16	23	19	15	24	97
GREENWICH (GLOUCESTER)	20	23	19	25	9	96
WOODLAND	17	25	23	13	14	92
AVALON	27	18	16	13	17	91
WILDWOOD CREST	17	27	23	12	12	91
BROOKLAWN	22	16	20	17	13	88
ALLOWAY	18	19	13	17	21	88
MANNINGTON	18	16	13	21	19	87
NORTH HANOVER	22	22	13	15	14	86
SOUTH HARRISON	21	21	20	12	12	86
WASHINGTON (BURLINGTON)	8	18	27	15	17	85
WOODSTOWN	22	12	13	15	17	79
HADDONFIELD	3	3	20	20	30	76

REGION I TOWNS (continued)	2004	2005	2006	2007	2008	TOTAL
OLDMANS	11	17	14	20	14	76
FOLSOM	21	9	12	17	13	72
BORDENTOWN	15	10	14	19	14	72
OAKLYN	18	12	20	11	9	70
LAWRENCE	21	8	15	10	15	69
ESTELL MANOR	16	14	11	14	13	68
COMMERCIAL	18	12	7	17	13	67
MERCHANTVILLE	16	17	12	12	9	66
WOOLWICH	25	5	2	8	24	64
QUINTON	14	8	10	17	10	59
SWEDESBORO	14	12	11	9	10	56
PORT REPUBLIC	5	16	12	12	10	55
STONE HARBOR	11	12	9	9	10	51
LAUREL SPRINGS	13	8	12	6	6	45
WOODBINE	9	9	9	11	4	42
LAWNSIDE	6	9	9	7	9	40
WENONAH	3	8	19	6	4	40
WEYMOUTH	7	7	8	7	9	38
CHESILHURST	6	10	5	4	6	31
BEVERLY CITY	3	11	7	5	3	29
DOWNE	2	7	6	9	4	28
SALEM	16	9	0	1	2	28
STOW CREEK	3	7	8	5	4	27
NATIONAL PARK	5	4	6	5	3	23
LOWER ALLOWAYS CREEK	4	1	3	6	6	20
WEST CAPE MAY	7	2	3	4	3	19
SHILOH	3	3	1	7	3	17
CORBIN CITY	5	3	2	5	1	16
RIVERTON	2	1	3	7	2	15
ELMER	5	2	2	4	1	14
WRIGHTSTOWN	4	2	3	3	1	13
DELANCO	11	0	0	0	0	11
GREENWICH (CUMBERLAND)	2	2	3	0	4	11

REGION I TOWNS (continued)	2004	2005	2006	2007	2008	TOTAL
WOODLYNNE	0	0	2	3	5	10
LONGPORT	0	3	0	3	2	8
AUDUBON PARK	3	1	1	2	0	7
EL SINBORO	2	2	0	2	1	7
FIELDSBORO	1	1	1	0	0	3
NEWFIELD	0	2	0	0	0	2
PINE VALLEY	0	0	0	1	0	1
TAVISTOCK	1	0	0	0	0	1
WEST WILDWOOD	0	0	1	0	0	1
TOTAL CRASHES REGION I TOWNS	13,714	13,122	12,788	12,918	12,497	65,039

Table 10 shows the number of teen drivers involved in motor vehicle crashes in Region II (Hunterdon, Mercer, Middlesex, Monmouth, Ocean, Somerset, and Union Counties). During the five-year period, 42 percent of all teen driver crashes in the state occurred

in this region. The first ten municipalities listed in Table 10 accounted for 30 percent of all teen driver crashes in the region. Toms River had the most teen driver crashes (6,214) of all municipalities in the region and in the state.

Table 10: Teen Drivers Involved in Motor Vehicle Crashes in Region II, 2004-2008

REGION II TOWNS	2004	2005	2006	2007	2008	TOTAL
TOMS RIVER	1,282	1,258	1,271	1,200	1,203	6,214
WOODBIDGE	1,040	927	1,065	1,014	930	4,976
EDISON	999	846	1,030	1,009	1,040	4,924
HAMILTON	804	827	787	812	744	3,974
UNION COUNTY	703	654	775	652	530	3,314
BRICK	700	632	661	716	605	3,314
ELIZABETH	695	647	521	600	535	2,998
MIDDLETOWN	561	519	565	587	578	2,810
EAST BRUNSWICK	548	561	545	558	477	2,689
BRIDGEWATER	496	486	535	593	517	2,627
LAKEWOOD	514	507	500	555	512	2,588
OLD BRIDGE	510	529	513	525	485	2,562
NEW BRUNSWICK	508	498	505	472	490	2,473
FREEHOLD TWP	468	510	466	469	542	2,455
TRENTON	580	496	423	490	402	2,391

REGION II TOWNS	2004	2005	2006	2007	2008	TOTAL
SAYREVILLE	421	424	378	396	341	1,960
HOWELL	409	411	370	388	356	1,934
JACKSON	392	362	417	316	363	1,850
PISCATAWAY	401	349	383	368	338	1,839
WALL	349	373	358	403	326	1,809
LAWRENCE	315	332	355	378	313	1,693
FRANKLIN (SOMERSET)	322	313	318	373	342	1,668
MARLBORO	327	285	290	301	314	1,517
MANALAPAN	284	304	302	324	296	1,510
LINDEN	343	325	270	269	277	1,484
HILLSBOROUGH	267	327	265	314	284	1,457
WEST WINDSOR	298	265	286	262	294	1,405
OCEAN (MONMOUTH)	314	260	247	256	275	1,352
SOUTH BRUNSWICK	237	243	282	288	265	1,315
NORTH BRUNSWICK	248	257	153	227	290	1,175
PERTH AMBOY	283	262	206	188	219	1,158
PLAINFIELD	258	211	213	229	230	1,141
LACEY	241	214	237	213	234	1,139
EWING	241	239	221	198	206	1,105
STAFFORD	292	212	128	244	225	1,101
RARITAN (HUNTERDON)	200	203	208	219	180	1,010
SOUTH PLAINFIELD	176	189	196	228	215	1,004
NEPTUNE TWP	217	200	207	167	202	993
HOLMDEL	198	191	206	209	180	984
EATONTOWN	210	226	181	188	172	977
RAHWAY	214	191	196	192	179	972
LONG BRANCH	175	161	195	185	179	895
HAZLET	159	184	202	171	175	891
BERKELEY	166	188	167	190	178	889
WESTFIELD	165	143	175	183	206	872
TINTON FALLS	148	190	168	183	150	839
SPRINGFIELD	160	146	181	160	170	817
HILLSIDE	179	155	160	144	133	771

REGION II TOWNS	2004	2005	2006	2007	2008	TOTAL
EAST WINDSOR	163	146	161	142	142	754
CLARK	161	120	146	154	147	728
MANCHESTER	154	152	148	151	115	720
POINT PLEASANT	134	129	158	149	141	711
HOPEWELL	142	132	125	146	157	702
MONROE	118	140	118	159	143	678
BARNEGAT	136	155	106	124	137	658
WARREN	125	136	121	118	126	626
COLTS NECK	126	102	129	119	150	626
MONTGOMERY	119	98	116	158	126	617
ABERDEEN	127	110	130	122	119	608
WEST LONG BRANCH	162	137	88	102	117	606
SCOTCH PLAINS	119	114	126	116	130	605
ROSELLE	113	122	123	119	114	591
SUMMIT	117	110	112	117	122	578
BERNARDS	115	97	122	123	121	578
NORTH PLAINFIELD	124	113	101	112	113	563
WASHINGTON	107	124	88	119	108	546
RED BANK	89	107	122	117	107	542
RARITAN (SOMERSET)	108	97	101	110	126	542
CLINTON TWP.	110	113	110	98	104	535
BRANCHBURG	94	118	106	119	98	535
ASBURY PARK	151	124	87	69	88	519
LITTLE EGG HARBOR	119	105	83	89	70	466
CARTERET	96	107	85	78	92	458
FREEHOLD	89	102	89	84	92	456
WATCHUNG	91	86	87	104	84	452
READINGTON	93	92	88	90	77	440
METUCHEN	77	82	84	94	92	429
MILLSTONE TWP (MONMOUTH)	76	96	79	96	75	422
FLEMINGTON	103	83	79	84	71	420
PRINCETON TWP	74	80	96	78	87	415
KEYPORT	77	80	95	76	87	415

REGION II TOWNS	2004	2005	2006	2007	2008	TOTAL
BEDMINSTER	72	78	86	93	75	404
GREEN BROOK	82	89	88	56	88	403
CRANFORD	64	77	81	78	90	390
MIDDLESEX	79	80	79	59	75	372
SOMERVILLE	84	71	60	86	65	366
POINT PLEASANT BEACH	87	74	50	71	78	360
BEACHWOOD	67	84	66	59	76	352
ROSELLE PARK	69	61	77	62	66	335
NEW PROVIDENCE	68	64	72	72	59	335
PLAINSBORO	61	61	64	70	78	334
KENILWORTH	67	66	68	56	52	309
SEASIDE HEIGHTS	54	71	49	69	61	304
SPOTSWOOD	71	46	58	58	55	288
SOUTH RIVER	73	53	55	58	47	286
LITTLE SILVER	66	47	54	65	48	280
PRINCETON	58	61	63	44	46	272
BOUND BROOK	69	50	47	59	47	272
CRANBURY	52	52	57	50	52	263
MOUNTAINSIDE	50	66	48	45	48	257
BERKELEY HEIGHTS	50	44	49	53	58	254
SOUTH AMBOY	33	59	54	52	55	253
KEANSBURG	61	44	50	58	40	253
UPPER FREEHOLD	49	55	44	57	45	250
SHIP BOTTOM	56	54	43	52	38	243
MILLTOWN	68	45	42	54	34	243
SHREWSBURY	48	47	55	48	42	240
BELMAR	61	43	47	41	40	232
LEBANON TWP	46	51	35	56	42	230
SOUTH TOMS RIVER	54	46	46	43	38	227
BERNARDSVILLE	50	45	36	45	44	220
OCEAN (OCEAN)	37	45	40	34	63	219
DUNELLEN	37	42	53	42	38	212
NEPTUNE CITY	45	51	38	36	40	210

REGION II TOWNS	2004	2005	2006	2007	2008	TOTAL
UNION	41	41	42	30	52	206
UNION BEACH	36	36	28	42	24	166
TEWKSBURY	35	39	29	30	30	163
HIGHLAND PARK	48	32	25	25	33	163
FANWOOD	32	29	32	29	37	159
PLUMSTED	53	5	1	55	39	153
TUCKERTON	35	30	24	23	35	147
SEASIDE PARK	32	24	29	37	24	146
JAMESBURG	20	21	30	29	43	143
ALEXANDRIA	32	22	24	29	31	138
CLINTON	23	30	28	24	33	138
MANVILLE	58	37	0	0	40	135
LONG BEACH	34	23	22	26	29	134
SEA BRIGHT	31	18	18	37	28	132
GARWOOD	31	28	28	24	21	132
MATAWAN	56	4	15	29	26	130
EAST AMWELL	29	25	23	31	20	128
MANTOLOKING	31	26	21	27	21	126
LAKEHURST	27	25	21	29	22	124
HIGHTSTOWN	22	35	30	18	17	122
BRIELLE	23	25	13	28	27	116
MANASQUAN	26	23	11	29	19	108
BETHLEHEM	20	21	17	25	25	108
OCEANPORT	19	23	25	21	17	105
FRANKLIN (HUNTERDON)	21	27	8	18	29	103
KINGWOOD	19	24	20	21	17	101
HOLLAND	15	18	20	28	9	90
BAY HEAD	18	18	17	17	20	90
ATLANTIC HIGHLANDS	17	18	18	14	23	90
DELAWARE	12	25	13	18	21	89
PENNINGTON	17	23	18	15	8	81
EAGLESWOOD	6	19	13	21	20	79
LAMBERTVILLE	14	19	11	15	18	77

REGION II TOWNS	2004	2005	2006	2007	2008	TOTAL
LAVALLETTE	13	17	13	9	22	74
BEACH HAVEN	14	15	11	20	12	72
HIGHLANDS	8	13	19	14	17	71
RUMSON	5	24	32	9	0	70
HIGH BRIDGE	15	15	12	14	13	69
DEAL	11	14	11	16	16	68
PINE BEACH	10	16	15	8	17	66
SPRING LAKE	18	17	12	4	12	63
GLEN GARDNER	12	16	12	12	10	62
FAR HILLS	14	8	13	19	5	59
ALLENTOWN	8	14	11	8	16	57
FAIR HAVEN	14	15	7	1	15	52
SURF CITY	22	9	11	4	5	51
PEAPACK-GLADSTONE	13	10	11	9	7	50
LEBANON	10	9	10	12	9	50
ALLENHURST	8	13	7	14	7	49
BRADLEY BEACH	5	5	5	18	14	47
SOUTH BOUND BROOK	8	11	10	7	10	46
SPRING LAKE HEIGHTS	1	28	0	14	1	44
FARMINGDALE	4	9	8	13	6	40
SEA GIRT	9	3	10	8	8	38
MONMOUTH BEACH	6	6	8	10	5	35
HARVEY CEDARS	12	4	5	3	7	31
BLOOMSBURY	8	3	11	6	2	30
OCEAN GATE	6	8	4	6	4	28
HAMPTON	8	4	5	5	6	28
AVON	9	7	1	3	6	26
HOPEWELL	8	4	5	2	5	24
CALIFON	13	4	2	2	1	22
MILFORD	3	4	5	4	3	19
FRENCHTOWN	1	4	4	6	3	18
WEST AMWELL	12	2	1	1	1	17
BARNEGAT LIGHT	1	4	2	5	5	17

REGION II TOWNS	2004	2005	2006	2007	2008	TOTAL
STOCKTON	3	1	1	1	10	16
ROCKY HILL	2	2	3	3	2	12
MILLSTONE (SOMERSET)	1	1	1	4	5	12
LAKE COMO	2	0	4	1	4	11
ROOSEVELT	1	5	1	1	1	9
LOCH ARBOUR	2	0	3	1	2	8
ISLAND HEIGHTS	5	1	1	0	1	8
INTERLAKEN	2	3	0	2	0	7
WINFIELD	1	0	2	1	2	6
SHREWSBURY TWP	0	0	0	0	2	2
HELMETTA	0	0	0	1	1	2
TOTAL CRASHES REGION II TOWNS	26,075	25,024	24,729	25,368	24,356	125,552

Table 11 shows the number of teen drivers involved in motor vehicle crashes in Region III (Bergen, Essex, Hudson, Morris, Passaic, Sussex, and Warren Counties). During the five-year period, 36 percent of all teen driver crashes in the state occurred in this

region. The first ten municipalities listed in the table accounted for 30 percent of all teen driver crashes in the region. Newark had the most teen driver crashes (5,174) of all municipalities in the region and the second highest in the state.

Table 11: Teen Drivers Involved in Motor Vehicle Crashes in Region III, 2004-2008

REGION III TOWNS	2004	2005	2006	2007	2008	TOTAL
NEWARK	1,320	1,313	810	570	1,161	5,174
PATERSON	934	848	876	859	769	4,286
PARAMUS	894	665	731	824	808	3,922
CLIFTON	773	770	652	780	766	3,741
JERSEY CITY	706	670	703	740	715	3,534
WAYNE	759	668	717	656	729	3,529
PARSIPPANY-TROY HILLS	328	343	324	410	406	1,811
HACKENSACK	348	323	321	318	324	1,634
NORTH BERGEN TWP	404	338	270	309	277	1,598
WEST ORANGE	288	310	260	310	267	1,435
IRVINGTON	281	318	249	274	288	1,410
EAST ORANGE	321	279	276	297	235	1,408
TEANECK	284	312	263	279	269	1,407

REGION III TOWNS	2004	2005	2006	2007	2008	TOTAL
BLOOMFIELD	308	259	250	236	271	1,324
PASSAIC	302	282	258	245	227	1,314
ROXBURY	275	284	251	254	236	1,300
ROCKAWAY TWP	229	242	217	303	286	1,277
LIVINGSTON	259	271	245	221	224	1,220
RANDOLPH	248	212	209	263	284	1,216
MONTCLAIR	248	248	224	242	238	1,200
MOUNT OLIVE	223	223	214	240	237	1,137
VERNON	229	253	232	201	171	1,086
WEST MILFORD	278	260	203	133	211	1,085
SPARTA	207	214	187	220	216	1,044
BELLEVILLE	213	195	196	210	225	1,039
KEARNY	216	224	184	223	173	1,020
BAYONNE	201	181	224	175	171	952
FAIR LAWN	224	203	187	151	171	936
LITTLE FALLS	194	193	193	167	165	912
MILLBURN	176	201	165	185	181	908
DENVILLE	179	161	169	165	173	847
ELMWOOD PARK	193	160	181	137	145	816
FORT LEE	172	180	148	160	129	789
NUTLEY	154	152	121	171	168	766
MAHWAH	160	165	128	147	154	754
TOTOWA	163	160	140	159	114	736
RUTHERFORD	156	142	133	150	146	727
MORRISTOWN	135	175	131	161	123	725
ENGLEWOOD	128	120	117	147	149	661
HANOVER	139	143	130	129	112	653
GARFIELD	135	127	110	140	131	643
LYNDHURST	147	129	107	124	131	638
UNION CITY	165	133	93	124	114	629
DOVER	137	108	127	120	131	623
SADDLE BROOK	115	117	126	137	127	622
HACKETTSTOWN	113	113	120	134	139	619

REGION III TOWNS	2004	2005	2006	2007	2008	TOTAL
LODI	133	121	110	139	114	617
MONTVILLE	145	103	96	126	127	597
ORANGE	108	122	113	110	133	586
SECAUCUS	130	126	113	121	93	583
EAST RUTHERFORD	122	128	92	133	96	571
EAST HANOVER	100	121	126	119	103	569
RAMSEY	123	103	139	139	59	563
PEQUANNOCK	112	92	107	124	128	563
WASHINGTON TWP (MORRIS)	114	104	91	113	105	527
HAWTHORNE	101	111	88	116	109	525
RIDGEWOOD	110	114	93	102	105	524
PHILLIPSBURG	128	108	109	96	76	517
MORRIS TWP	100	102	98	104	93	497
HAMPTON	104	84	103	106	100	497
FAIRFIELD	101	116	88	113	77	495
JEFFERSON	103	45	94	137	113	492
HASBROUCK HEIGHTS	90	102	105	88	105	490
BERGENFIELD	106	95	81	90	98	470
OAKLAND	88	90	81	89	100	448
NEWTON	85	91	84	94	86	440
ROCHELLE PARK	88	81	86	88	88	431
VERONA	78	92	81	80	93	424
RIDGEFIELD	83	86	76	95	77	417
MAPLEWOOD	86	98	79	77	76	416
HOPATCONG	104	81	64	97	70	416
WEST NEW YORK	90	95	63	75	86	409
ROCKAWAY	87	77	79	80	81	404
HARDYSTON	78	87	73	79	82	399
PALISADES PARK	72	84	86	84	72	398
WANTAGE	85	82	83	77	65	392
WANAQUE	68	75	70	70	104	387
WYCKOFF	90	61	69	75	78	373
SOUTH ORANGE	80	72	71	81	65	369

REGION III TOWNS	2004	2005	2006	2007	2008	TOTAL
FRANKLIN LAKES	82	65	85	54	81	367
WEST PATERSON	84	86	75	67	51	363
RIVER EDGE	87	68	59	63	72	349
HOBOKEN	68	82	66	75	56	347
RIDGEFIELD PARK	64	64	73	65	79	345
WASHINGTON TWP (BERGEN)	74	62	68	81	57	342
CEDAR GROVE	60	60	70	73	79	342
NORTH ARLINGTON	74	60	69	54	69	326
RINGWOOD	56	63	67	69	70	325
FRANKLIN (SUSSEX)	62	59	53	67	77	318
EDGEWATER	70	74	62	53	55	314
MADISON	61	58	63	64	66	312
MONTVALE	62	67	55	80	47	311
CALDWELL	49	65	79	68	48	309
WEST CALDWELL	66	60	46	72	64	308
CLIFFSIDE PARK	59	61	60	68	60	308
MANSFIELD	51	62	52	78	61	304
DUMONT	72	64	43	68	56	303
LITTLE FERRY	57	60	63	58	63	301
FLORHAM PARK	85	59	56	54	44	298
HARRISON	65	60	75	53	44	297
FRANKFORD	66	51	69	55	51	292
WHARTON	69	67	50	51	53	290
ORADELL	56	57	53	64	50	280
HILLSDALE	72	38	53	60	53	276
NEW MILFORD	57	51	55	62	49	274
WASHINGTON TWP (WARREN)	40	54	51	57	70	272
HALEDON	63	61	49	45	53	271
TENAFLY	46	56	45	68	55	270
ROSELAND	56	57	45	58	53	269
POHATCONG	48	59	52	59	48	266
BOONTON	53	61	58	54	36	262
MAYWOOD	62	59	46	46	45	258

REGION III TOWNS	2004	2005	2006	2007	2008	TOTAL
CARLSTADT	57	53	46	55	45	256
GLEN ROCK	44	56	42	54	47	243
FAIRVIEW	50	59	45	49	39	242
POMPTON LAKES	50	50	43	49	42	234
LOPATCONG	52	35	40	49	47	223
MORRIS PLAINS	54	52	29	48	39	222
ANDOVER TWP	49	52	34	45	40	220
ALLAMUCHY	35	56	53	43	33	220
RIVERDALE	32	52	46	57	32	219
CHESTER	53	36	33	48	41	211
LONG HILL	39	35	42	49	43	208
LEONIA	49	42	51	28	30	200
WALDWICK	37	39	41	41	39	197
BLAIRSTOWN	36	38	42	45	36	197
SADDLE RIVER	42	50	29	37	38	196
WASHINGTON BORO	46	36	33	42	35	192
GREENWICH	25	39	38	46	44	192
WEEHAWKEN	37	37	32	50	35	191
KINNELON	55	43	2	47	43	190
BYRAM	47	50	35	26	32	190
WALLINGTON	40	30	46	41	32	189
PARK RIDGE	38	35	33	45	32	183
LINCOLN PARK	42	26	32	41	38	179
INDEPENDENCE	35	39	29	50	26	179
EMERSON	30	40	26	41	41	178
BUTLER	34	33	30	33	48	178
LAFAYETTE T	33	28	34	31	51	177
ALLENDALE	41	33	50	34	18	176
KNOWLTON	25	30	32	40	48	175
GLEN RIDGE	37	34	45	23	32	171
HAMBURG	34	31	33	38	30	166
CHATHAM TWP	33	36	31	28	37	165
BLOOMINGDALE	22	27	34	39	39	161

REGION III TOWNS	2004	2005	2006	2007	2008	TOTAL
DEMAREST	28	35	39	33	26	161
UPPER SADDLE RIVER	21	22	40	51	23	157
WESTWOOD	2	45	32		75	154
CHATHAM	33	27	32	39	23	154
CLOSTER	23	33	22	33	40	151
HO-HO-KUS	23	35	39	20	32	149
WOODCLIFF LAKE	34	27	31	27	25	144
WHITE	23	32	29	29	30	143
CHESTER	34	23	28	29	27	141
MENDHAM	31	27	19	26	34	137
NORTH HALEDON	26	29	29	29	24	137
NORWOOD	16	35	28	29	28	136
BOGOTA	26	33	22	25	30	136
MONTAGUE	28	26	31	25	25	135
FRANKLIN	30	25	24	33	22	134
OLD TAPPAN	27	25	33	23	22	130
ENGLEWOOD CLIFFS	28	21	19	23	36	127
WOOD-RIDGE	31	27	16	22	31	127
HARDING	28	29	17	30	23	127
MENDHAM TWP	27	30	22	22	22	123
RIVER VALE	23	17	18	20	42	120
FREDON	26	26	17	17	34	120
MIDLAND PARK	34	31	0	37	17	119
NETCONG	26	29	19	21	24	119
STANHOPE	31	26	15	16	29	117
ALPINE	27	28	17	26	18	116
MOUNT ARLINGTON	38	25	15	20	15	113
GUTTENBERG	29	23	20	20	19	111
NORTH CALDWELL	18	17	21	21	30	107
ESSEX FELLS	35	17	13	25	15	105
PROSPECT PARK	22	26	20	13	18	99
BOONTON	18	20	17	21	21	97
MOUNTAIN LAKES	28	19	17	8	21	93

REGION III TOWNS	2004	2005	2006	2007	2008	TOTAL
SOUTH HACKENSACK	20	14	17	16	25	92
GREEN	23	16	20	18	13	90
SANDYSTON	18	23	16	17	14	88
SUSSEX	17	14	19	14	20	84
MINE HILL	17	15	14	18	18	82
TETERBORO	19	14	13	17	17	80
FRELINGHUYSEN	12	24	15	15	14	80
NORTHVALE	17	15	10	18	19	79
HOPE	17	13	17	20	8	75
HARDWICK	17	15	11	10	19	72
MOONACHIE	14	18	12	17	10	71
HARRINGTON PARK	19	6	5	13	25	68
HARMONY	22	12	10	14	9	67
HAWORTH	10	11	14	17	14	66
ANDOVER	14	13	16	8	8	59
LIBERTY	8	11	9	15	12	55
OGDENSBURG	7	11	10	4	10	42
STILLWATER	11	7	11	13	0	42
BELVIDERE	10	12	7	7	5	41
EAST NEWARK	5	17	6	5	8	41
OXFORD	7	8	4	12	5	36
ALPHA	3	4	6	8	6	27
BRANCHVILLE	4	4	6	4	7	25
VICTORY GARDENS	3	4	8	3	6	24
ROCKLEIGH	3	2	1	0	1	7
CRESSKILL	0	1	0	0	1	2
WEST NEW YORK	0	0	0	1	0	1
TOTAL CRASHES REGION III TOWNS	21,973	21,092	19,377	20,489	20,306	103,237



SAFE PASSAGE

moving toward zero fatalities

WWW.NJSAFEROADS.COM

