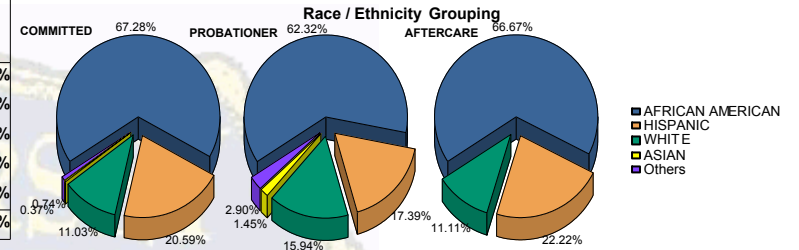


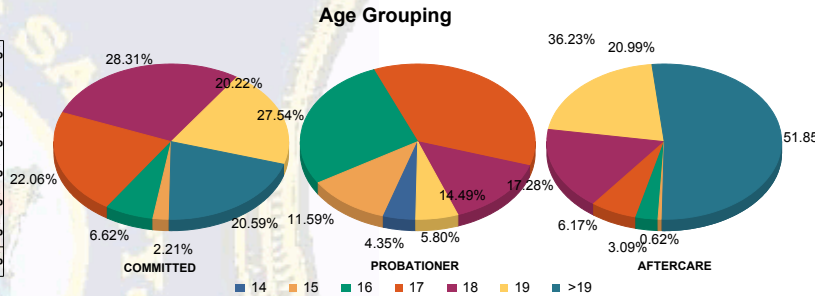


Juvenile Demographics and Statistics

Race/Ethnicity	COMMITTED		PROBATIONER		AFTERCARE		Total							
	MALE	FEMALE	MALE	FEMALE	MALE	FEMALE								
AFRICAN AMERICAN	176	68.48%	7	46.67%	41	66.13%	2	28.57%	104	67.53%	4	50.00%	334	66.40%
HISPANIC	54	21.01%	2	13.33%	11	17.74%	1	14.29%	34	22.08%	2	25.00%	104	20.68%
WHITE	24	9.34%	6	40.00%	7	11.29%	4	57.14%	16	10.39%	2	25.00%	59	11.73%
ASIAN	1	0.39%	0	0.00%	1	1.61%	0	0.00%	0	0.00%	0	0.00%	2	0.40%
Others	2	0.78%	0	0.00%	2	3.23%	0	0.00%	0	0.00%	0	0.00%	4	0.80%
Total	257	100.00%	15	100.00%	62	100.00%	7	100.00%	154	100.00%	8	100.00%	503	100.00%



Age	MALE	FEMALE	MALE	FEMALE	MALE	FEMALE	MALE	FEMALE	Total	
14	0	0.00%	0	0.00%	2	3.23%	1	14.29%	3	0.60%
15	5	1.95%	1	6.67%	8	12.90%	0	0.00%	15	2.98%
16	18	7.00%	0	0.00%	19	30.65%	0	0.00%	42	8.35%
17	56	21.79%	4	26.67%	23	37.10%	2	28.57%	10	6.49%
18	73	28.40%	4	26.67%	8	12.90%	2	28.57%	26	16.88%
19	51	19.84%	4	26.67%	2	3.23%	2	28.57%	34	22.08%
>19	54	21.01%	2	13.33%	0	0.00%	0	0.00%	78	50.65%
Total	257	100.00%	15	100.00%	62	100.00%	7	100.00%	154	100.00%

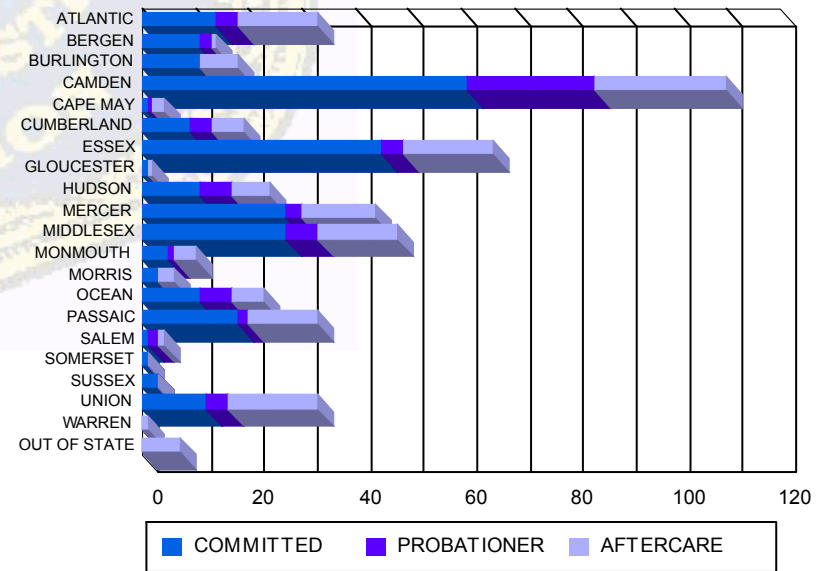


Average Age	MALE	FEMALE	MALE	FEMALE	MALE	FEMALE	MALE	FEMALE	Total
Average Age	18.38	18.20	16.53	17.43	20.16	20.88	18.72		

Sentencing County

ATLANTIC	14	5.45%	0	0.00%	4	6.45%	0	0.00%	14	9.09%	1	12.50%	33	6.56%
BERGEN	11	4.28%	0	0.00%	2	3.23%	0	0.00%	1	0.65%	0	0.00%	14	2.78%
BURLINGTON	9	3.50%	2	13.33%	0	0.00%	0	0.00%	7	4.55%	0	0.00%	18	3.58%
CAMDEN	55	21.40%	6	40.00%	20	32.26%	4	57.14%	23	14.94%	2	25.00%	110	21.87%
CAPE MAY	1	0.39%	0	0.00%	1	1.61%	0	0.00%	2	1.30%	0	0.00%	4	0.80%
CUMBERLAND	9	3.50%	0	0.00%	4	6.45%	0	0.00%	5	3.25%	1	12.50%	19	3.78%
ESSEX	43	16.73%	2	13.33%	4	6.45%	0	0.00%	17	11.04%	0	0.00%	66	13.12%
GLOUCESTER	1	0.39%	0	0.00%	0	0.00%	0	0.00%	1	0.65%	0	0.00%	2	0.40%
HUDSON	11	4.28%	0	0.00%	6	9.68%	0	0.00%	7	4.55%	0	0.00%	24	4.77%
MERCER	25	9.73%	2	13.33%	2	3.23%	1	14.29%	14	9.09%	0	0.00%	44	8.75%
MIDDLESEX	26	10.12%	1	6.67%	6	9.68%	0	0.00%	14	9.09%	1	12.50%	48	9.54%
MONMOUTH	5	1.95%	0	0.00%	1	1.61%	0	0.00%	4	2.60%	0	0.00%	10	1.99%
MORRIS	3	1.17%	0	0.00%	0	0.00%	0	0.00%	3	1.95%	0	0.00%	6	1.19%
OCEAN	11	4.28%	0	0.00%	4	6.45%	2	28.57%	6	3.90%	0	0.00%	23	4.57%
PASSAIC	18	7.00%	0	0.00%	2	3.23%	0	0.00%	12	7.79%	1	12.50%	33	6.56%
SALEM	1	0.39%	0	0.00%	2	3.23%	0	0.00%	1	0.65%	0	0.00%	4	0.80%
SOMERSET	1	0.39%	0	0.00%	0	0.00%	0	0.00%	0	0.00%	0	0.00%	1	0.20%
SUSSEX	2	0.78%	1	6.67%	0	0.00%	0	0.00%	0	0.00%	0	0.00%	3	0.60%
UNION	11	4.28%	1	6.67%	4	6.45%	0	0.00%	15	9.74%	2	25.00%	33	6.56%
WARREN	0	0.00%	0	0.00%	0	0.00%	0	0.00%	1	0.65%	0	0.00%	1	0.20%
OUT OF STATE	0	0.00%	0	0.00%	0	0.00%	0	0.00%	7	4.55%	0	0.00%	7	1.39%
Total	257	100.00%	15	100.00%	62	100.00%	7	100.00%	154	100.00%	8	100.00%	503	100.00%

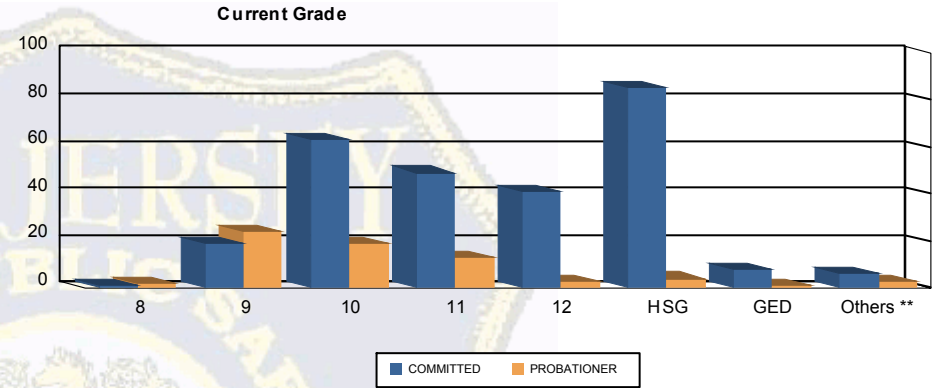
Count of Juveniles By Sentencing County





Juvenile Demographics and Statistics

Current Grade	COMMITTED		PROBATIONER		Total
	MALE	FEMALE	MALE	FEMALE	
8	1 (0.39%)	0 0.00%	2 (3.23%)	0 0.00%	3 (0.88%)
9	16 (6.23%)	3 (20.00%)	23 (37.10%)	1 (14.29%)	43 (12.61%)
10	59 (22.96%)	4 (26.67%)	17 (27.42%)	2 (28.57%)	82 (24.05%)
11	47 (18.29%)	2 (13.33%)	13 (20.97%)	0 0.00%	62 (18.18%)
12	39 (15.18%)	2 (13.33%)	2 (3.23%)	1 (14.29%)	44 (12.90%)
HSG	82 (31.91%)	3 (20.00%)	2 (3.23%)	2 (28.57%)	89 (26.10%)
GED	8 (3.11%)	0 0.00%	0 0.00%	1 (14.29%)	9 (2.64%)
Others **	5 (1.95%)	1 (6.67%)	3 (4.84%)	0 0.00%	9 (2.64%)
Total	257 (100.00%)	15 (100.00%)	62 (100.00%)	7 (100.00%)	341 (100.00%)

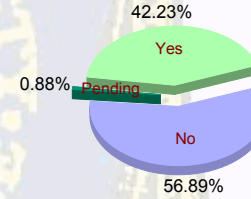


** Includes Aged Out Juveniles and Pending Records

Special Education Services

Yes	111 (43.19%)	6 (40.00%)	25 (40.32%)	2 (28.57%)	144 (42.23%)
No	145 (56.42%)	9 (60.00%)	35 (56.45%)	5 (71.43%)	194 (56.89%)
Pending	1 (0.39%)	0 0.00%	2 (3.23%)	0 0.00%	3 (0.88%)
Total	257 (100.00%)	15 (100.00%)	62 (100.00%)	7 (100.00%)	341 (100.00%)

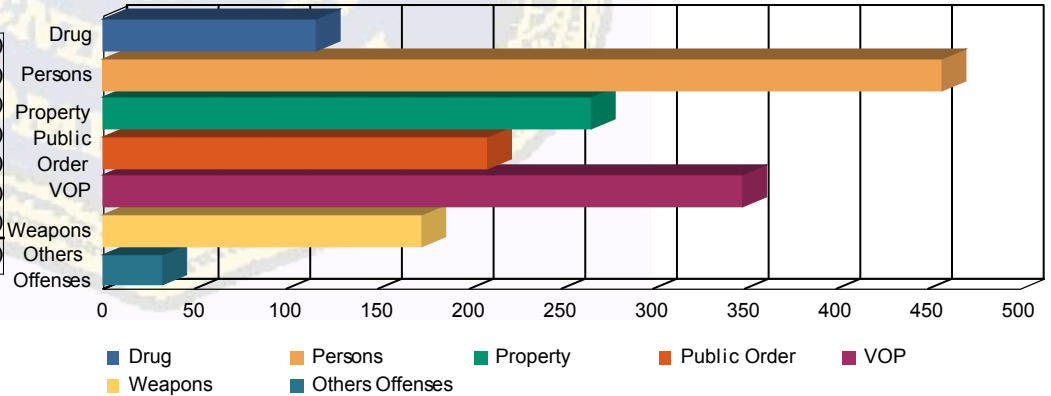
Special Education



Offense Categories

Drug	87 (6.63%)	6 (8.33%)	20 (10.15%)	3 (14.29%)	116 (7.24%)
Persons	390 (29.73%)	16 (22.22%)	47 (23.86%)	4 (19.05%)	457 (28.53%)
Property	230 (17.53%)	10 (13.89%)	25 (12.69%)	1 (4.76%)	266 (16.60%)
Public Order	167 (12.73%)	14 (19.44%)	23 (11.68%)	5 (23.81%)	209 (13.05%)
VOP	271 (20.66%)	16 (22.22%)	54 (27.41%)	8 (38.10%)	349 (21.79%)
Weapons	145 (11.05%)	8 (11.11%)	20 (10.15%)	0 0.00%	173 (10.80%)
Others Offenses	22 (1.68%)	2 (2.78%)	8 (4.06%)	0 0.00%	32 (2.00%)
Total *	1,312 (100.00%)	72 (100.00%)	197 (100.00%)	21 (100.00%)	1,602 (100.00%)

Offense Categories



* Juveniles may have multiple offenses