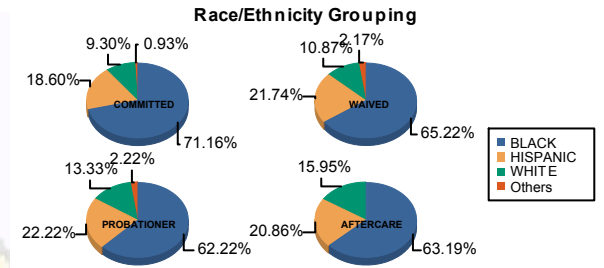




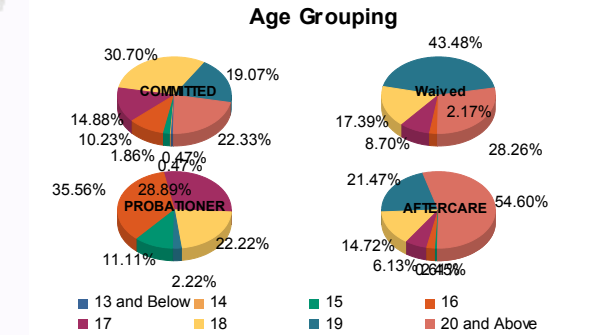
Juvenile Demographics and Statistics

Race/ Ethnicity	COMMITTED		WAIVED		PROBATIONER		AFTERCARE		Total									
	MALE	FEMALE	MALE	FEMALE	MALE	FEMALE	MALE	FEMALE										
BLACK	147	71.71%	6	60.00%	27	62.79%	3	100.00%	26	61.90%	2	66.67%	99	64.71%	4	40.00%	314	66.95%
HISPANIC	39	19.02%	1	10.00%	10	23.26%	0	0.00%	10	23.81%	0	0.00%	32	20.92%	2	20.00%	94	20.04%
WHITE	17	8.29%	3	30.00%	5	11.63%	0	0.00%	5	11.90%	1	33.33%	22	14.38%	4	40.00%	57	12.15%
Others	2	0.98%	0	0.00%	1	2.33%	0	0.00%	1	2.38%	0	0.00%	0	0.00%	0	0.00%	4	0.85%
Total	205	100.00%	10	100.00%	43	100.00%	3	100.00%	42	100.00%	3	100.00%	153	100.00%	10	100.00%	469	100.00%



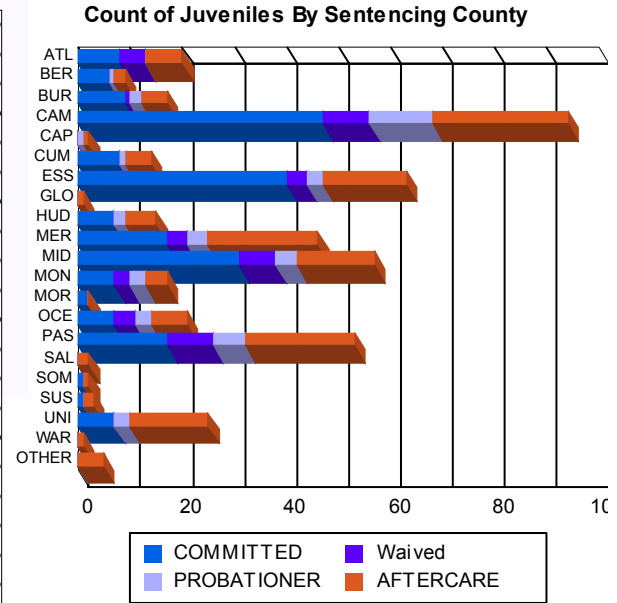
Age

13 and Below	1	0.49%	0	0.00%	0	0.00%	0	0.00%	0	0.00%	0	0.00%	0	0.00%	0	0.00%	1	0.21%
14	1	0.49%	0	0.00%	0	0.00%	0	0.00%	0	0.00%	0	0.00%	0	0.00%	0	0.00%	1	0.21%
15	4	1.95%	0	0.00%	0	0.00%	0	0.00%	4	9.52%	1	33.33%	1	0.65%	0	0.00%	10	2.13%
16	20	9.76%	2	20.00%	1	2.33%	0	0.00%	16	38.10%	0	0.00%	3	1.96%	1	10.00%	43	9.17%
17	31	15.12%	1	10.00%	4	9.30%	0	0.00%	11	26.19%	2	66.67%	9	5.88%	1	10.00%	59	12.58%
18	65	31.71%	1	10.00%	7	16.28%	1	33.33%	10	23.81%	0	0.00%	22	14.38%	2	20.00%	108	23.03%
19	37	18.05%	4	40.00%	20	46.51%	0	0.00%	1	2.38%	0	0.00%	34	22.22%	1	10.00%	97	20.68%
20 and Above	46	22.44%	2	20.00%	11	25.58%	2	66.67%	0	0.00%	0	0.00%	84	54.90%	5	50.00%	150	31.98%
Total	205	100.00%	10	100.00%	43	100.00%	3	100.00%	42	100.00%	3	100.00%	153	100.00%	10	100.00%	469	100.00%
Average Age	18.37		18.60		18.91		19.33		16.71		16.33		20.40		19.60		18.96	



Sentencing County

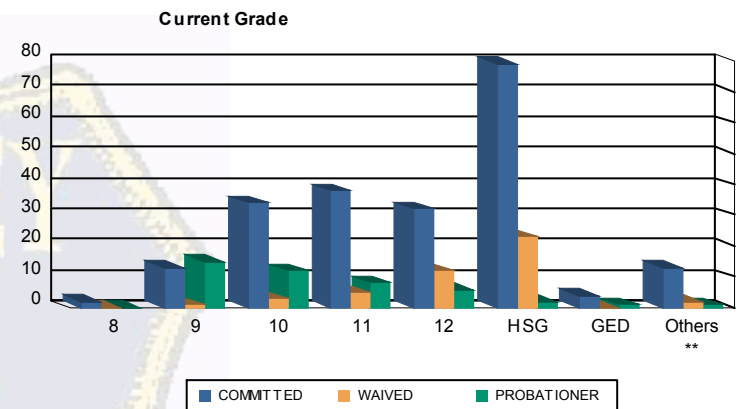
ATL	8	3.90%	0	0.00%	5	11.63%	0	0.00%	0	0.00%	0	0.00%	6	3.92%	1	10.00%	20	4.26%
BER	6	2.93%	0	0.00%	0	0.00%	0	0.00%	1	2.38%	0	0.00%	2	1.31%	0	0.00%	9	1.92%
BUR	7	3.41%	2	20.00%	1	2.33%	0	0.00%	2	4.76%	0	0.00%	5	3.27%	0	0.00%	17	3.62%
CAM	43	20.98%	4	40.00%	6	13.95%	3	100.00%	10	23.81%	2	66.67%	25	16.34%	1	10.00%	94	20.04%
CAP	0	0.00%	0	0.00%	0	0.00%	0	0.00%	1	2.38%	0	0.00%	1	0.65%	0	0.00%	2	0.43%
CUM	8	3.90%	0	0.00%	0	0.00%	0	0.00%	1	2.38%	0	0.00%	5	3.27%	0	0.00%	14	2.99%
ESS	40	19.51%	0	0.00%	4	9.30%	0	0.00%	3	7.14%	0	0.00%	15	9.80%	1	10.00%	63	13.43%
GLO	0	0.00%	0	0.00%	0	0.00%	0	0.00%	0	0.00%	0	0.00%	1	0.65%	0	0.00%	1	0.21%
HUD	7	3.41%	0	0.00%	0	0.00%	0	0.00%	2	4.76%	0	0.00%	6	3.92%	0	0.00%	15	3.20%
MER	17	8.29%	0	0.00%	4	9.30%	0	0.00%	3	7.14%	1	33.33%	18	11.76%	3	30.00%	46	9.81%
MID	28	13.66%	3	30.00%	7	16.28%	0	0.00%	4	9.52%	0	0.00%	14	9.15%	1	10.00%	57	12.15%
MON	7	3.41%	0	0.00%	3	6.98%	0	0.00%	3	7.14%	0	0.00%	4	2.61%	0	0.00%	17	3.62%
MOR	2	0.98%	0	0.00%	0	0.00%	0	0.00%	0	0.00%	0	0.00%	0	0.00%	0	0.00%	2	0.43%
OCE	7	3.41%	0	0.00%	4	9.30%	0	0.00%	3	7.14%	0	0.00%	7	4.58%	0	0.00%	21	4.48%
PAS	17	8.29%	0	0.00%	9	20.93%	0	0.00%	6	14.29%	0	0.00%	20	13.07%	1	10.00%	53	11.30%
SAL	0	0.00%	0	0.00%	0	0.00%	0	0.00%	0	0.00%	0	0.00%	2	1.31%	0	0.00%	2	0.43%
SOM	1	0.49%	0	0.00%	0	0.00%	0	0.00%	0	0.00%	0	0.00%	1	0.65%	0	0.00%	2	0.43%
SUS	1	0.49%	0	0.00%	0	0.00%	0	0.00%	0	0.00%	0	0.00%	1	0.65%	1	10.00%	3	0.64%
UNI	6	2.93%	1	10.00%	0	0.00%	0	0.00%	3	7.14%	0	0.00%	14	9.15%	1	10.00%	25	5.33%
WAR	0	0.00%	0	0.00%	0	0.00%	0	0.00%	0	0.00%	0	0.00%	1	0.65%	0	0.00%	1	0.21%
OTHER	0	0.00%	0	0.00%	0	0.00%	0	0.00%	0	0.00%	0	0.00%	5	3.27%	0	0.00%	5	1.07%
Total	205	100.00%	10	100.00%	43	100.00%	3	100.00%	42	100.00%	3	100.00%	153	100.00%	10	100.00%	469	100.00%





Juvenile Demographics and Statistics

Current Grade	COMMITTED		WAIVED		PROBATIONER		Total
	MALE	FEMALE	MALE	FEMALE	MALE	FEMALE	
8	2 (0.98%)	0 (0.00%)	0 (0.00%)	0 (0.00%)	0 (0.00%)	0 (0.00%)	2 (0.65%)
9	11 (5.37%)	2 (20.00%)	1 (2.33%)	0 (0.00%)	13 (30.95%)	2 (66.67%)	29 (9.48%)
10	33 (16.10%)	1 (10.00%)	3 (6.98%)	0 (0.00%)	12 (28.57%)	0 (0.00%)	49 (16.01%)
11	35 (17.07%)	3 (30.00%)	5 (11.63%)	0 (0.00%)	7 (16.67%)	1 (33.33%)	51 (16.67%)
12	31 (15.12%)	1 (10.00%)	11 (25.58%)	1 (33.33%)	6 (14.29%)	0 (0.00%)	50 (16.34%)
HSG	78 (38.05%)	1 (10.00%)	21 (48.84%)	2 (66.67%)	2 (4.76%)	0 (0.00%)	104 (33.99%)
GED	4 (1.95%)	0 (0.00%)	0 (0.00%)	0 (0.00%)	1 (2.38%)	0 (0.00%)	5 (1.63%)
Others **	11 (5.37%)	2 (20.00%)	2 (4.65%)	0 (0.00%)	1 (2.38%)	0 (0.00%)	16 (5.23%)
Total	205 (100.00%)	10 (100.00%)	43 (100.00%)	3 (100.00%)	42 (100.00%)	3 (100.00%)	306 (100.00%)

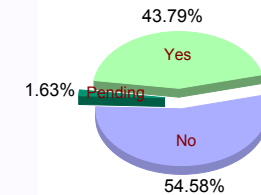


** Includes Aged Out Juveniles and Pending Records

Special Education Services

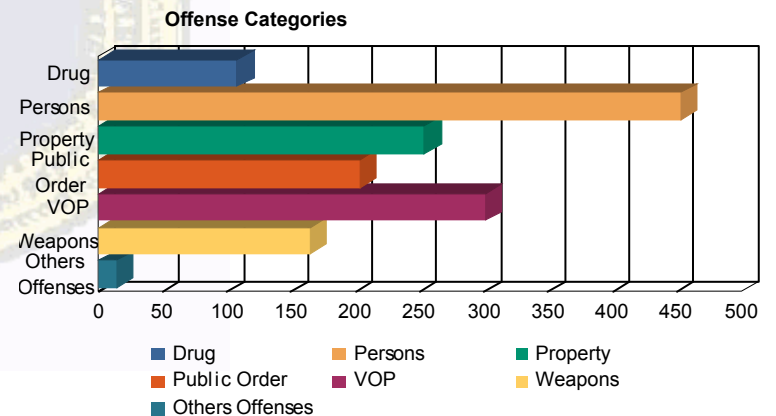
Yes	91 (44.39%)	3 (30.00%)	13 (30.23%)	2 (66.67%)	25 (59.52%)	0 (0.00%)	134 (43.79%)
No	111 (54.15%)	7 (70.00%)	29 (67.44%)	1 (33.33%)	16 (38.10%)	3 (100.00%)	167 (54.58%)
Pending	3 (1.46%)	0 (0.00%)	1 (2.33%)	0 (0.00%)	1 (2.38%)	0 (0.00%)	5 (1.63%)
Total	205 (100.00%)	10 (100.00%)	43 (100.00%)	3 (100.00%)	42 (100.00%)	3 (100.00%)	306 (100.00%)

Special Education



Offense Categories

Drug	82 (6.61%)	6 (10.00%)	6 (8.11%)	1 (7.14%)	13 (12.87%)	0 (0.00%)	108 (7.21%)
Persons	371 (29.92%)	16 (26.67%)	36 (48.65%)	5 (35.71%)	23 (22.77%)	2 (22.22%)	453 (30.24%)
Property	219 (17.66%)	9 (15.00%)	4 (5.41%)	2 (14.29%)	17 (16.83%)	3 (33.33%)	254 (16.96%)
Public Order	171 (13.79%)	11 (18.33%)	6 (8.11%)	2 (14.29%)	11 (10.89%)	2 (22.22%)	203 (13.55%)
VOP	253 (20.40%)	12 (20.00%)	4 (5.41%)	2 (14.29%)	28 (27.72%)	2 (22.22%)	301 (20.09%)
Weapons	132 (10.65%)	5 (8.33%)	18 (24.32%)	1 (7.14%)	9 (8.91%)	0 (0.00%)	165 (11.01%)
Others Offenses	12 (0.97%)	1 (1.67%)	0 (0.00%)	1 (7.14%)	0 (0.00%)	0 (0.00%)	14 (0.93%)
Total *	1,240 (100.00%)	60 (100.00%)	74 (100.00%)	14 (100.00%)	101 (100.00%)	9 (100.00%)	1,498 (100.00%)



* Juveniles may have multiple offenses