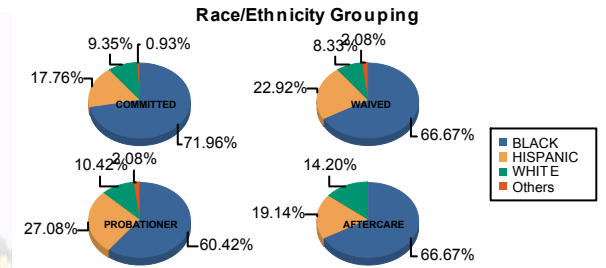




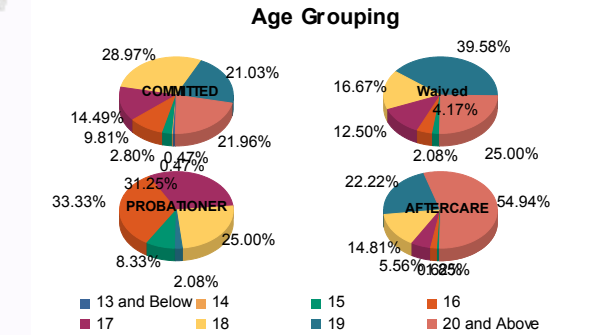
Juvenile Demographics and Statistics

Race/ Ethnicity	COMMITTED				WAIVED				PROBATIONER				AFTERCARE				Total	
	MALE	FEMALE	MALE	FEMALE	MALE	FEMALE	MALE	FEMALE	MALE	FEMALE	MALE	FEMALE	MALE	FEMALE				
BLACK	148	72.55%	6	60.00%	29	64.44%	3	100.00%	27	58.70%	2	100.00%	103	67.76%	5	50.00%	323	68.43%
HISPANIC	37	18.14%	1	10.00%	11	24.44%	0	0.00%	13	28.26%	0	0.00%	29	19.08%	2	20.00%	93	19.70%
WHITE	17	8.33%	3	30.00%	4	8.89%	0	0.00%	5	10.87%	0	0.00%	20	13.16%	3	30.00%	52	11.02%
Others	2	0.98%	0	0.00%	1	2.22%	0	0.00%	1	2.17%	0	0.00%	0	0.00%	0	0.00%	4	0.85%
Total	204	100.00%	10	100.00%	45	100.00%	3	100.00%	46	100.00%	2	100.00%	152	100.00%	10	100.00%	472	100.00%



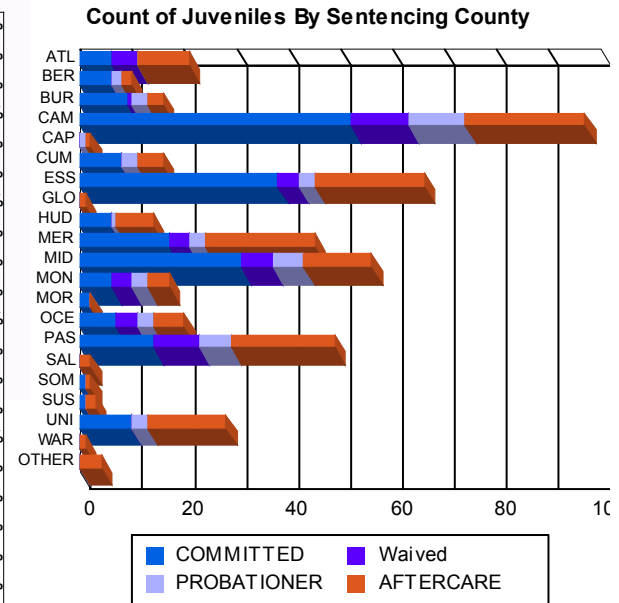
Age

Age	MALE	FEMALE	MALE	FEMALE	MALE	FEMALE	MALE	FEMALE	MALE	FEMALE	MALE	FEMALE	Total	Percentage
13 and Below	1	0.49%	0	0.00%	0	0.00%	0	0.00%	0	0.00%	0	0.00%	1	0.21%
14	1	0.49%	0	0.00%	0	0.00%	0	0.00%	0	0.00%	0	0.00%	1	0.21%
15	6	2.94%	0	0.00%	1	2.22%	0	0.00%	4	8.70%	0	0.00%	12	2.54%
16	19	9.31%	2	20.00%	2	4.44%	0	0.00%	16	34.78%	0	0.00%	42	8.90%
17	30	14.71%	1	10.00%	6	13.33%	0	0.00%	13	28.26%	2	100.00%	8	5.26%
18	61	29.90%	1	10.00%	7	15.56%	1	33.33%	12	26.09%	0	0.00%	22	14.47%
19	41	20.10%	4	40.00%	19	42.22%	0	0.00%	1	2.17%	0	0.00%	35	23.03%
20 and Above	45	22.06%	2	20.00%	10	22.22%	2	66.67%	0	0.00%	0	0.00%	83	54.61%
Total	204	100.00%	10	100.00%	45	100.00%	3	100.00%	46	100.00%	2	100.00%	152	100.00%
Average Age	18.36		18.60		18.64		19.33		16.78		17.00		20.41	



Sentencing County

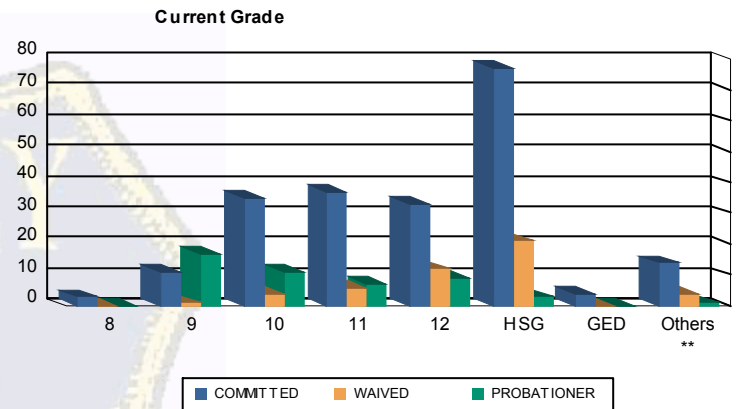
County	MALE	FEMALE	MALE	FEMALE	MALE	FEMALE	MALE	FEMALE	MALE	FEMALE	MALE	FEMALE	Total	Percentage
ATL	6	2.94%	0	0.00%	5	11.11%	0	0.00%	0	0.00%	9	5.92%	1	10.00%
BER	6	2.94%	0	0.00%	0	0.00%	0	0.00%	2	4.35%	0	0.00%	2	1.32%
BUR	7	3.43%	2	20.00%	1	2.22%	0	0.00%	3	6.52%	0	0.00%	3	1.97%
CAM	48	23.53%	4	40.00%	8	17.78%	3	100.00%	9	19.57%	2	100.00%	23	15.13%
CAP	0	0.00%	0	0.00%	0	0.00%	0	0.00%	1	2.17%	0	0.00%	1	0.66%
CUM	8	3.92%	0	0.00%	0	0.00%	0	0.00%	3	6.52%	0	0.00%	5	3.29%
ESS	38	18.63%	0	0.00%	4	8.89%	0	0.00%	3	6.52%	0	0.00%	19	12.50%
GLO	0	0.00%	0	0.00%	0	0.00%	0	0.00%	0	0.00%	0	0.00%	1	0.66%
HUD	6	2.94%	0	0.00%	0	0.00%	0	0.00%	1	2.17%	0	0.00%	7	4.61%
MER	17	8.33%	0	0.00%	4	8.89%	0	0.00%	3	6.52%	0	0.00%	18	11.84%
MID	28	13.73%	3	30.00%	6	13.33%	0	0.00%	6	13.04%	0	0.00%	12	7.89%
MON	6	2.94%	0	0.00%	4	8.89%	0	0.00%	3	6.52%	0	0.00%	4	2.63%
MOR	2	0.98%	0	0.00%	0	0.00%	0	0.00%	0	0.00%	0	0.00%	0	0.00%
OCE	7	3.43%	0	0.00%	4	8.89%	0	0.00%	3	6.52%	0	0.00%	6	3.95%
PAS	14	6.86%	0	0.00%	9	20.00%	0	0.00%	6	13.04%	0	0.00%	19	12.50%
SAL	0	0.00%	0	0.00%	0	0.00%	0	0.00%	0	0.00%	0	0.00%	2	1.32%
SOM	1	0.49%	0	0.00%	0	0.00%	0	0.00%	0	0.00%	0	0.00%	1	0.66%
SUS	1	0.49%	0	0.00%	0	0.00%	0	0.00%	0	0.00%	0	0.00%	1	0.66%
UNI	9	4.41%	1	10.00%	0	0.00%	0	0.00%	3	6.52%	0	0.00%	14	9.21%
WAR	0	0.00%	0	0.00%	0	0.00%	0	0.00%	0	0.00%	0	0.00%	1	0.66%
OTHER	0	0.00%	0	0.00%	0	0.00%	0	0.00%	0	0.00%	0	0.00%	4	2.63%
Total	204	100.00%	10	100.00%	45	100.00%	3	100.00%	46	100.00%	2	100.00%	152	100.00%





Juvenile Demographics and Statistics

Current Grade	COMMITTED		WAIVED		PROBATIONER		Total
	MALE	FEMALE	MALE	FEMALE	MALE	FEMALE	
8	3 (1.47%)	0 (0.00%)	0 (0.00%)	0 (0.00%)	0 (0.00%)	0 (0.00%)	3 (0.97%)
9	10 (4.90%)	1 (10.00%)	1 (2.22%)	0 (0.00%)	16 (34.78%)	1 (50.00%)	29 (9.35%)
10	33 (16.18%)	2 (20.00%)	4 (8.89%)	0 (0.00%)	11 (23.91%)	0 (0.00%)	50 (16.13%)
11	34 (16.67%)	3 (30.00%)	6 (13.33%)	0 (0.00%)	6 (13.04%)	1 (50.00%)	50 (16.13%)
12	32 (15.69%)	1 (10.00%)	11 (24.44%)	1 (33.33%)	9 (19.57%)	0 (0.00%)	54 (17.42%)
HSG	76 (37.25%)	1 (10.00%)	19 (42.22%)	2 (66.67%)	3 (6.52%)	0 (0.00%)	101 (32.58%)
GED	4 (1.96%)	0 (0.00%)	0 (0.00%)	0 (0.00%)	0 (0.00%)	0 (0.00%)	4 (1.29%)
Others **	12 (5.88%)	2 (20.00%)	4 (8.89%)	0 (0.00%)	1 (2.17%)	0 (0.00%)	19 (6.13%)
Total	204 (100.00%)	10 (100.00%)	45 (100.00%)	3 (100.00%)	46 (100.00%)	2 (100.00%)	310 (100.00%)

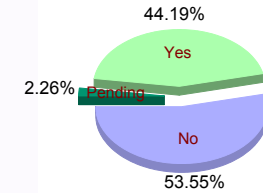


** Includes Aged Out Juveniles and Pending Records

Special Education Services

Yes	90 (44.12%)	3 (30.00%)	14 (31.11%)	2 (66.67%)	28 (60.87%)	0 (0.00%)	137 (44.19%)
No	111 (54.41%)	7 (70.00%)	28 (62.22%)	1 (33.33%)	17 (36.96%)	2 (100.00%)	166 (53.55%)
Pending	3 (1.47%)	0 (0.00%)	3 (6.67%)	0 (0.00%)	1 (2.17%)	0 (0.00%)	7 (2.26%)
Total	204 (100.00%)	10 (100.00%)	45 (100.00%)	3 (100.00%)	46 (100.00%)	2 (100.00%)	310 (100.00%)

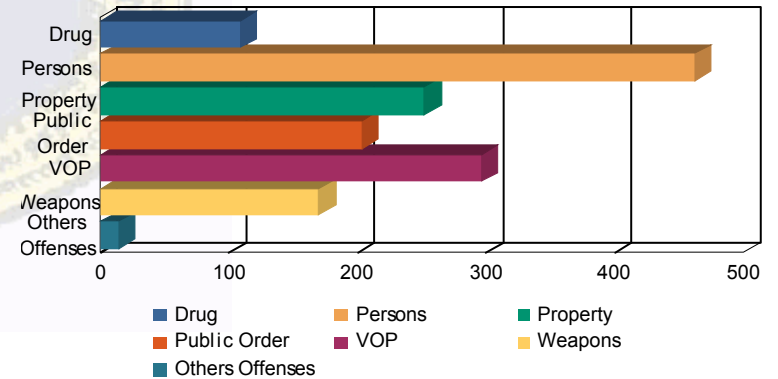
Special Education



Offense Categories

Drug	80 (6.54%)	6 (10.34%)	6 (6.52%)	1 (7.14%)	16 (14.29%)	0 (0.00%)	109 (7.24%)
Persons	371 (30.31%)	15 (25.86%)	42 (45.65%)	5 (35.71%)	27 (24.11%)	2 (33.33%)	462 (30.68%)
Property	218 (17.81%)	9 (15.52%)	5 (5.43%)	2 (14.29%)	16 (14.29%)	2 (33.33%)	252 (16.73%)
Public Order	166 (13.56%)	11 (18.97%)	10 (10.87%)	2 (14.29%)	13 (11.61%)	1 (16.67%)	203 (13.48%)
VOP	244 (19.93%)	11 (18.97%)	8 (8.70%)	2 (14.29%)	30 (26.79%)	1 (16.67%)	296 (19.65%)
Weapons	134 (10.95%)	5 (8.62%)	20 (21.74%)	1 (7.14%)	10 (8.93%)	0 (0.00%)	170 (11.29%)
Others Offenses	11 (0.90%)	1 (1.72%)	1 (1.09%)	1 (7.14%)	0 (0.00%)	0 (0.00%)	14 (0.93%)
Total *	1,224 (100.00%)	58 (100.00%)	92 (100.00%)	14 (100.00%)	112 (100.00%)	6 (100.00%)	1,506 (100.00%)

Offense Categories



* Juveniles may have multiple offenses