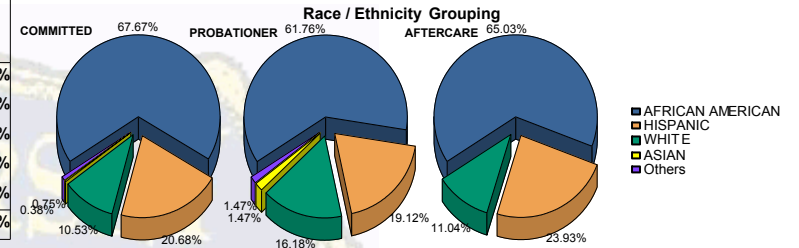


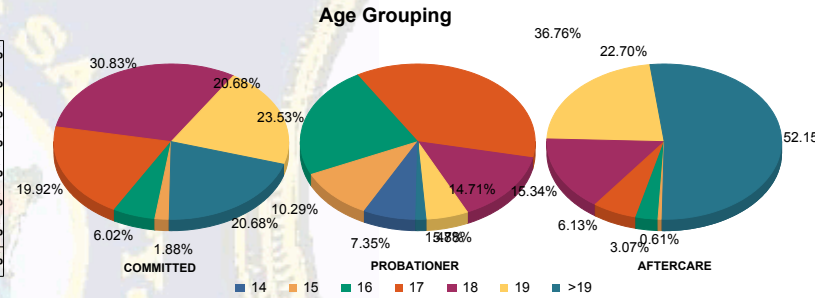


Juvenile Demographics and Statistics

Race/Ethnicity	COMMITTED		PROBATIONER		AFTERCARE		Total							
	MALE	FEMALE	MALE	FEMALE	MALE	FEMALE								
AFRICAN AMERICAN	174	69.05%	6	42.86%	40	64.52%	2	33.33%	101	65.58%	5	55.56%	328	66.00%
HISPANIC	53	21.03%	2	14.29%	12	19.35%	1	16.67%	37	24.03%	2	22.22%	107	21.53%
WHITE	22	8.73%	6	42.86%	8	12.90%	3	50.00%	16	10.39%	2	22.22%	57	11.47%
ASIAN	1	0.40%	0	0.00%	1	1.61%	0	0.00%	0	0.00%	0	0.00%	2	0.40%
Others	2	0.79%	0	0.00%	1	1.61%	0	0.00%	0	0.00%	0	0.00%	3	0.60%
<b>Total</b>	<b>252</b>	<b>100.00%</b>	<b>14</b>	<b>100.00%</b>	<b>62</b>	<b>100.00%</b>	<b>6</b>	<b>100.00%</b>	<b>154</b>	<b>100.00%</b>	<b>9</b>	<b>100.00%</b>	<b>497</b>	<b>100.00%</b>



Age	COMMITTED	PROBATIONER	AFTERCARE	Total
14	0	0	4	5
15	4	1	7	13
16	16	0	16	37
17	49	4	23	88
18	78	4	9	117
19	51	4	3	96
>19	54	1	0	141
<b>Total</b>	<b>252</b>	<b>14</b>	<b>62</b>	<b>497</b>

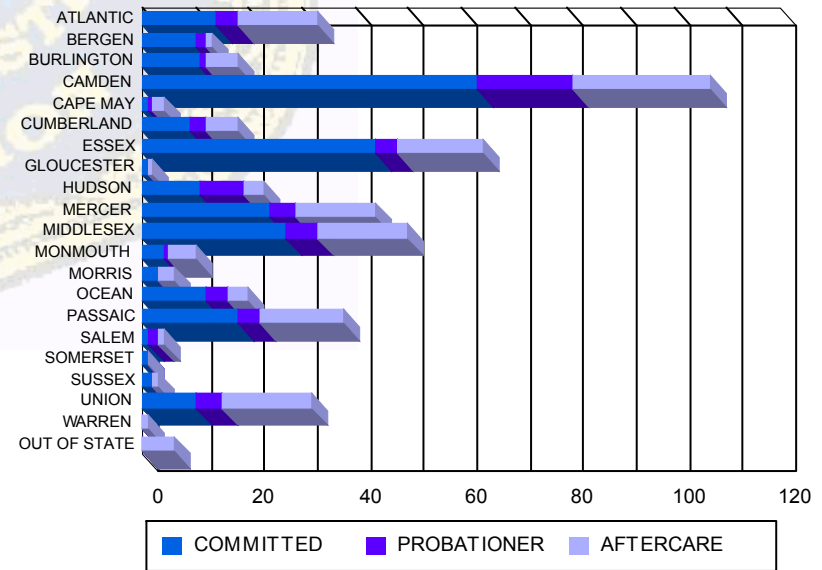


Average Age	COMMITTED	PROBATIONER	AFTERCARE	Total
Average Age	18.46	18.07	16.56	17.50
				20.19
				20.78
				18.78

**Sentencing County**

Sentencing County	COMMITTED	PROBATIONER	AFTERCARE	Total
ATLANTIC	14	5.56%	0	14
BERGEN	10	3.97%	0	10
BURLINGTON	9	3.57%	2	11
CAMDEN	57	22.62%	6	63
CAPE MAY	1	0.40%	0	1
CUMBERLAND	9	3.57%	0	9
ESSEX	43	17.06%	1	44
GLOUCESTER	1	0.40%	0	1
HUDSON	11	4.37%	0	11
MERCER	22	8.73%	2	24
MIDDLESEX	26	10.32%	1	27
MONMOUTH	4	1.59%	0	4
MORRIS	3	1.19%	0	3
OCEAN	12	4.76%	0	12
PASSAIC	18	7.14%	0	18
SALEM	1	0.40%	0	1
SOMERSET	1	0.40%	0	1
SUSSEX	1	0.40%	1	2
UNION	9	3.57%	1	10
WARREN	0	0.00%	0	0
OUT OF STATE	0	0.00%	0	0
<b>Total</b>	<b>252</b>	<b>100.00%</b>	<b>14</b>	<b>497</b>

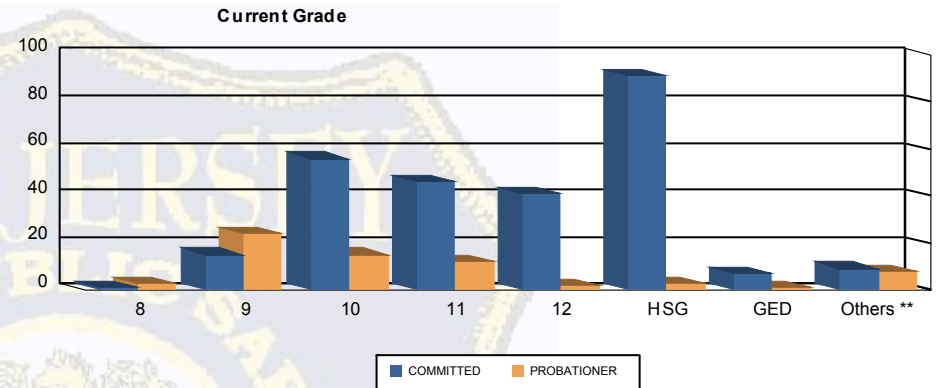
**Count of Juveniles By Sentencing County**





Juvenile Demographics and Statistics

Current Grade	COMMITTED		PROBATIONER		Total
	MALE	FEMALE	MALE	FEMALE	
8	1 (0.40%)	0 (0.00%)	3 (4.84%)	0 (0.00%)	4 (1.20%)
9	13 (5.16%)	2 (14.29%)	23 (37.10%)	1 (16.67%)	39 (11.68%)
10	51 (20.24%)	5 (35.71%)	13 (20.97%)	2 (33.33%)	71 (21.26%)
11	44 (17.46%)	2 (14.29%)	11 (17.74%)	1 (16.67%)	58 (17.37%)
12	40 (15.87%)	1 (7.14%)	2 (3.23%)	0 (0.00%)	43 (12.87%)
HSG	88 (34.92%)	3 (21.43%)	2 (3.23%)	1 (16.67%)	94 (28.14%)
GED	7 (2.78%)	0 (0.00%)	0 (0.00%)	1 (16.67%)	8 (2.40%)
Others **	8 (3.17%)	1 (7.14%)	8 (12.90%)	0 (0.00%)	17 (5.09%)
<b>Total</b>	<b>252 (100.00%)</b>	<b>14 (100.00%)</b>	<b>62 (100.00%)</b>	<b>6 (100.00%)</b>	<b>334 (100.00%)</b>

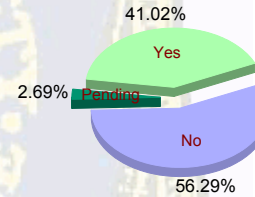


\*\* Includes Aged Out Juveniles and Pending Records

Special Education Services

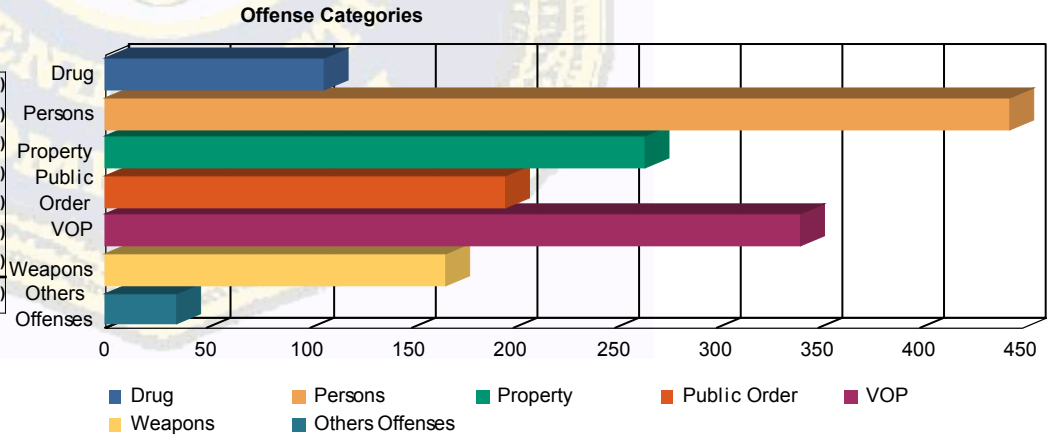
Yes	102 (40.48%)	6 (42.86%)	26 (41.94%)	3 (50.00%)	137 (41.02%)
No	146 (57.94%)	8 (57.14%)	31 (50.00%)	3 (50.00%)	188 (56.29%)
Pending	4 (1.59%)	0 (0.00%)	5 (8.06%)	0 (0.00%)	9 (2.69%)
<b>Total</b>	<b>252 (100.00%)</b>	<b>14 (100.00%)</b>	<b>62 (100.00%)</b>	<b>6 (100.00%)</b>	<b>334 (100.00%)</b>

Special Education



Offense Categories

Drug	81 (6.32%)	6 (8.33%)	18 (9.57%)	2 (14.29%)	107 (6.88%)
Persons	382 (29.82%)	16 (22.22%)	44 (23.40%)	2 (14.29%)	444 (28.55%)
Property	227 (17.72%)	10 (13.89%)	27 (14.36%)	1 (7.14%)	265 (17.04%)
Public Order	161 (12.57%)	14 (19.44%)	18 (9.57%)	3 (21.43%)	196 (12.60%)
VOP	265 (20.69%)	16 (22.22%)	54 (28.72%)	6 (42.86%)	341 (21.93%)
Weapons	141 (11.01%)	8 (11.11%)	18 (9.57%)	0 (0.00%)	167 (10.74%)
Others Offenses	24 (1.87%)	2 (2.78%)	9 (4.79%)	0 (0.00%)	35 (2.25%)
<b>Total *</b>	<b>1,281 (100.00%)</b>	<b>72 (100.00%)</b>	<b>188 (100.00%)</b>	<b>14 (100.00%)</b>	<b>1,555 (100.00%)</b>



\* Juveniles may have multiple offenses