



Juvenile Demographics and Statistics

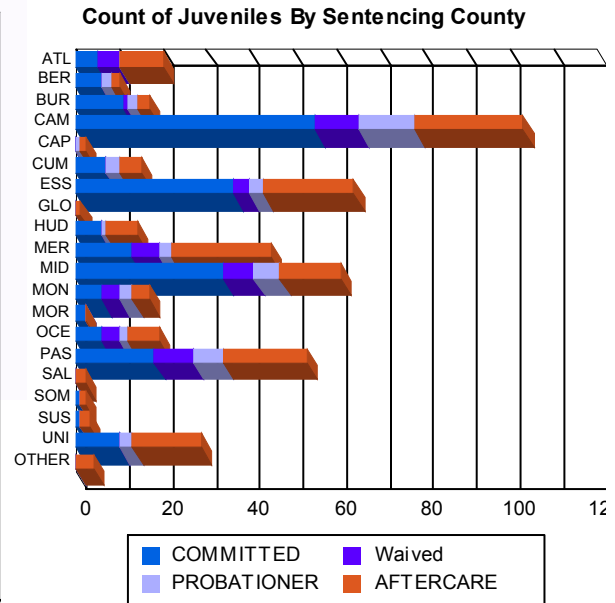
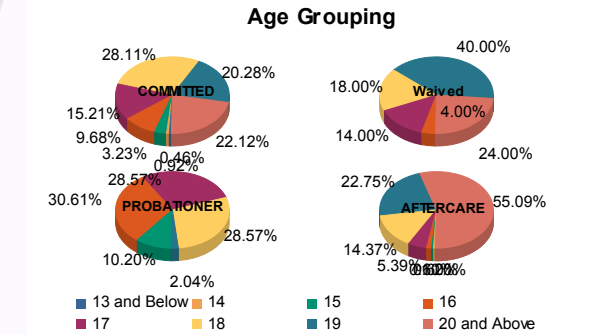
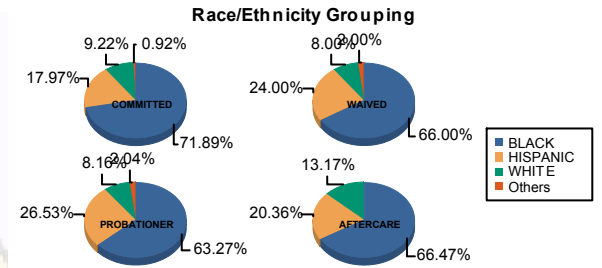
Race/ Ethnicity	COMMITTED		WAIVED		PROBATIONER		AFTERCARE		Total									
	MALE	FEMALE	MALE	FEMALE	MALE	FEMALE	MALE	FEMALE										
BLACK	150	72.46%	6	60.00%	30	63.83%	3	100.00%	29	61.70%	2	100.00%	106	67.52%	5	50.00%	331	68.53%
HISPANIC	38	18.36%	1	10.00%	12	25.53%	0	0.00%	13	27.66%	0	0.00%	32	20.38%	2	20.00%	98	20.29%
WHITE	17	8.21%	3	30.00%	4	8.51%	0	0.00%	4	8.51%	0	0.00%	19	12.10%	3	30.00%	50	10.35%
Others	2	0.97%	0	0.00%	1	2.13%	0	0.00%	1	2.13%	0	0.00%	0	0.00%	0	0.00%	4	0.83%
<b>Total</b>	<b>207</b>	<b>100.00%</b>	<b>10</b>	<b>100.00%</b>	<b>47</b>	<b>100.00%</b>	<b>3</b>	<b>100.00%</b>	<b>47</b>	<b>100.00%</b>	<b>2</b>	<b>100.00%</b>	<b>157</b>	<b>100.00%</b>	<b>10</b>	<b>100.00%</b>	<b>483</b>	<b>100.00%</b>

**Age**

13 and Below	1	0.48%	0	0.00%	0	0.00%	0	0.00%	0	0.00%	0	0.00%	0	0.00%	0	0.00%	1	0.21%
14	2	0.97%	0	0.00%	0	0.00%	0	0.00%	0	0.00%	0	0.00%	1	0.64%	0	0.00%	3	0.62%
15	7	3.38%	0	0.00%	0	0.00%	0	0.00%	5	10.64%	0	0.00%	1	0.64%	0	0.00%	13	2.69%
16	19	9.18%	2	20.00%	2	4.26%	0	0.00%	15	31.91%	0	0.00%	2	1.27%	0	0.00%	40	8.28%
17	32	15.46%	1	10.00%	7	14.89%	0	0.00%	12	25.53%	2	100.00%	8	5.10%	1	10.00%	63	13.04%
18	60	28.99%	1	10.00%	8	17.02%	1	33.33%	14	29.79%	0	0.00%	22	14.01%	2	20.00%	108	22.36%
19	40	19.32%	4	40.00%	20	42.55%	0	0.00%	1	2.13%	0	0.00%	37	23.57%	1	10.00%	103	21.33%
20 and Above	46	22.22%	2	20.00%	10	21.28%	2	66.67%	0	0.00%	0	0.00%	86	54.78%	6	60.00%	152	31.47%
<b>Total</b>	<b>207</b>	<b>100.00%</b>	<b>10</b>	<b>100.00%</b>	<b>47</b>	<b>100.00%</b>	<b>3</b>	<b>100.00%</b>	<b>47</b>	<b>100.00%</b>	<b>2</b>	<b>100.00%</b>	<b>157</b>	<b>100.00%</b>	<b>10</b>	<b>100.00%</b>	<b>483</b>	<b>100.00%</b>
<b>Average Age</b>	<b>18.31</b>		<b>18.60</b>		<b>18.68</b>		<b>19.33</b>		<b>16.81</b>		<b>17.00</b>		<b>20.42</b>		<b>20.10</b>		<b>18.93</b>	

**Sentencing County**

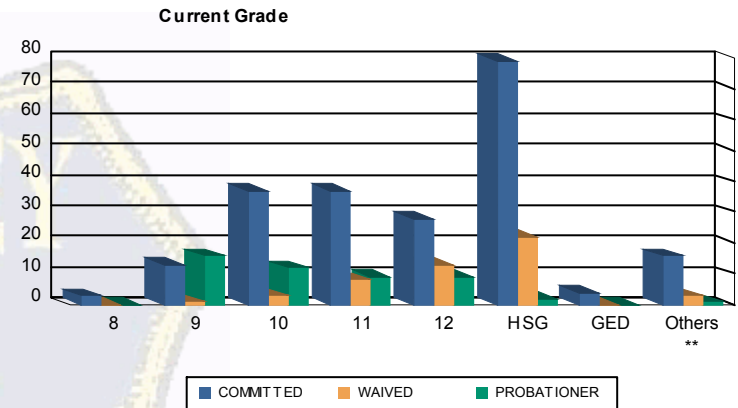
ATL	5	2.42%	0	0.00%	5	10.64%	0	0.00%	0	0.00%	0	0.00%	9	5.73%	1	10.00%	20	4.14%
BER	6	2.90%	0	0.00%	0	0.00%	0	0.00%	2	4.26%	0	0.00%	2	1.27%	0	0.00%	10	2.07%
BUR	9	4.35%	2	20.00%	1	2.13%	0	0.00%	2	4.26%	0	0.00%	3	1.91%	0	0.00%	17	3.52%
CAM	51	24.64%	4	40.00%	7	14.89%	3	100.00%	11	23.40%	2	100.00%	25	15.92%	0	0.00%	103	21.33%
CAP	0	0.00%	0	0.00%	0	0.00%	0	0.00%	1	2.13%	0	0.00%	1	0.64%	0	0.00%	2	0.41%
CUM	7	3.38%	0	0.00%	0	0.00%	0	0.00%	3	6.38%	0	0.00%	5	3.18%	0	0.00%	15	3.11%
ESS	36	17.39%	0	0.00%	4	8.51%	0	0.00%	3	6.38%	0	0.00%	19	12.10%	2	20.00%	64	13.25%
GLO	0	0.00%	0	0.00%	0	0.00%	0	0.00%	0	0.00%	0	0.00%	1	0.64%	0	0.00%	1	0.21%
HUD	6	2.90%	0	0.00%	0	0.00%	0	0.00%	1	2.13%	0	0.00%	7	4.46%	0	0.00%	14	2.90%
MER	13	6.28%	0	0.00%	6	12.77%	0	0.00%	3	6.38%	0	0.00%	20	12.74%	3	30.00%	45	9.32%
MID	31	14.98%	3	30.00%	7	14.89%	0	0.00%	6	12.77%	0	0.00%	13	8.28%	1	10.00%	61	12.63%
MON	6	2.90%	0	0.00%	4	8.51%	0	0.00%	3	6.38%	0	0.00%	4	2.55%	0	0.00%	17	3.52%
MOR	2	0.97%	0	0.00%	0	0.00%	0	0.00%	0	0.00%	0	0.00%	0	0.00%	0	0.00%	2	0.41%
OCE	6	2.90%	0	0.00%	4	8.51%	0	0.00%	2	4.26%	0	0.00%	7	4.46%	0	0.00%	19	3.93%
PAS	18	8.70%	0	0.00%	9	19.15%	0	0.00%	7	14.89%	0	0.00%	18	11.46%	1	10.00%	53	10.97%
SAL	0	0.00%	0	0.00%	0	0.00%	0	0.00%	0	0.00%	0	0.00%	2	1.27%	0	0.00%	2	0.41%
SOM	1	0.48%	0	0.00%	0	0.00%	0	0.00%	0	0.00%	0	0.00%	1	0.64%	0	0.00%	2	0.41%
SUS	1	0.48%	0	0.00%	0	0.00%	0	0.00%	0	0.00%	0	0.00%	1	0.64%	1	10.00%	3	0.62%
UNI	9	4.35%	1	10.00%	0	0.00%	0	0.00%	3	6.38%	0	0.00%	15	9.55%	1	10.00%	29	6.00%
OTHER	0	0.00%	0	0.00%	0	0.00%	0	0.00%	0	0.00%	0	0.00%	4	2.55%	0	0.00%	4	0.83%
<b>Total</b>	<b>207</b>	<b>100.00%</b>	<b>10</b>	<b>100.00%</b>	<b>47</b>	<b>100.00%</b>	<b>3</b>	<b>100.00%</b>	<b>47</b>	<b>100.00%</b>	<b>2</b>	<b>100.00%</b>	<b>157</b>	<b>100.00%</b>	<b>10</b>	<b>100.00%</b>	<b>483</b>	<b>100.00%</b>





Juvenile Demographics and Statistics

Current Grade	COMMITTED		WAIVED		PROBATIONER		Total
	MALE	FEMALE	MALE	FEMALE	MALE	FEMALE	
8	3 (1.45%)	0 (0.00%)	0 (0.00%)	0 (0.00%)	0 (0.00%)	0 (0.00%)	3 (0.95%)
9	12 (5.80%)	1 (10.00%)	1 (2.13%)	0 (0.00%)	15 (31.91%)	1 (50.00%)	30 (9.49%)
10	35 (16.91%)	2 (20.00%)	3 (6.38%)	0 (0.00%)	12 (25.53%)	0 (0.00%)	52 (16.46%)
11	34 (16.43%)	3 (30.00%)	8 (17.02%)	0 (0.00%)	8 (17.02%)	1 (50.00%)	54 (17.09%)
12	28 (13.53%)	0 (0.00%)	12 (25.53%)	1 (33.33%)	9 (19.15%)	0 (0.00%)	50 (15.82%)
HSG	77 (37.20%)	2 (20.00%)	20 (42.55%)	2 (66.67%)	2 (4.26%)	0 (0.00%)	103 (32.59%)
GED	4 (1.93%)	0 (0.00%)	0 (0.00%)	0 (0.00%)	0 (0.00%)	0 (0.00%)	4 (1.27%)
Others **	14 (6.76%)	2 (20.00%)	3 (6.38%)	0 (0.00%)	1 (2.13%)	0 (0.00%)	20 (6.33%)
<b>Total</b>	<b>207 (100.00%)</b>	<b>10 (100.00%)</b>	<b>47 (100.00%)</b>	<b>3 (100.00%)</b>	<b>47 (100.00%)</b>	<b>2 (100.00%)</b>	<b>316 (100.00%)</b>

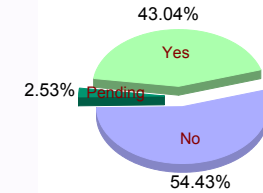


\*\* Includes Aged Out Juveniles and Pending Records

Special Education Services

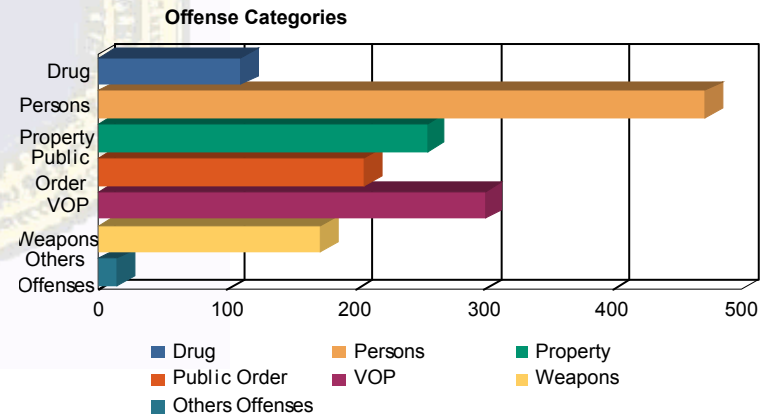
Yes	No	Pending	Total
88 (42.51%)	114 (55.07%)	5 (2.42%)	207 (100.00%)
3 (30.00%)	7 (70.00%)	0 (0.00%)	10 (100.00%)
15 (31.91%)	30 (63.83%)	2 (4.26%)	47 (100.00%)
2 (66.67%)	1 (33.33%)	0 (0.00%)	3 (100.00%)
28 (59.57%)	18 (38.30%)	1 (2.13%)	47 (100.00%)
0 (0.00%)	2 (100.00%)	0 (0.00%)	2 (100.00%)
136 (43.04%)	172 (54.43%)	8 (2.53%)	316 (100.00%)

Special Education



Offense Categories

Drug	Persons	Property	Public Order	VOP	Weapons	Others Offenses	Total *
83 (6.59%)	380 (30.18%)	223 (17.71%)	170 (13.50%)	253 (20.10%)	138 (10.96%)	12 (0.95%)	1,259 (100.00%)
6 (10.34%)	15 (25.86%)	9 (15.52%)	11 (18.97%)	11 (18.97%)	5 (8.62%)	1 (1.72%)	58 (100.00%)
6 (6.82%)	42 (47.73%)	5 (5.68%)	9 (10.23%)	7 (7.95%)	18 (20.45%)	1 (1.14%)	88 (100.00%)
1 (7.14%)	5 (35.71%)	2 (14.29%)	2 (14.29%)	2 (14.29%)	1 (7.14%)	1 (7.14%)	14 (100.00%)
15 (13.64%)	28 (25.45%)	15 (13.64%)	14 (12.73%)	27 (24.55%)	11 (10.00%)	0 (0.00%)	110 (100.00%)
0 (0.00%)	2 (33.33%)	2 (33.33%)	1 (16.67%)	1 (16.67%)	0 (0.00%)	0 (0.00%)	6 (100.00%)
111 (7.23%)	472 (30.75%)	256 (16.68%)	207 (13.49%)	301 (19.61%)	173 (11.27%)	15 (0.98%)	1,535 (100.00%)



\* Juveniles may have multiple offenses