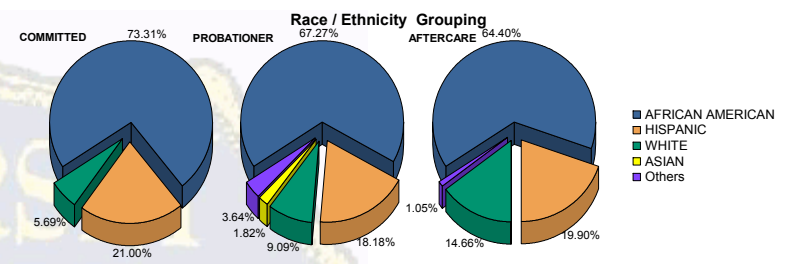


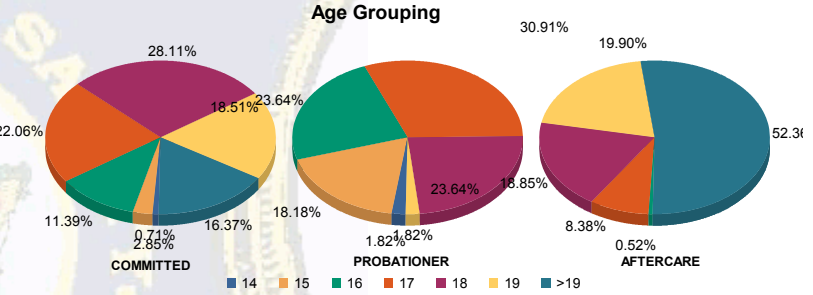


Juvenile Demographics and Statistics

Race/Ethnicity	COMMITTED		PROBATIONER		AFTERCARE		Total							
	MALE	FEMALE	MALE	FEMALE	MALE	FEMALE	MALE	FEMALE						
AFRICAN AMERICAN	200	74.35%	6	50.00%	35	67.31%	2	66.67%	114	63.69%	9	75.00%	366	69.45%
HISPANIC	56	20.82%	3	25.00%	9	17.31%	1	33.33%	36	20.11%	2	16.67%	107	20.30%
WHITE	13	4.83%	3	25.00%	5	9.62%	0	0.00%	27	15.08%	1	8.33%	49	9.30%
ASIAN	0	0.00%	0	0.00%	1	1.92%	0	0.00%	0	0.00%	0	0.00%	1	0.19%
Others	0	0.00%	0	0.00%	2	3.85%	0	0.00%	2	1.12%	0	0.00%	4	0.76%
Total	269	100.00%	12	100.00%	52	100.00%	3	100.00%	179	100.00%	12	100.00%	527	100.00%



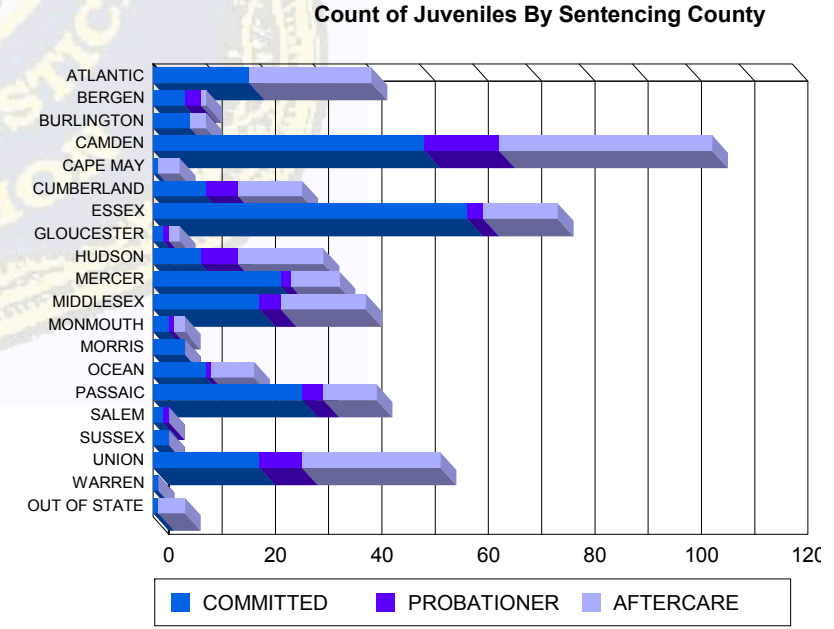
Age	COMMITTED	PROBATIONER	AFTERCARE	Total
14	2	0	1	3
15	8	0	0	18
16	30	2	12	46
17	58	4	15	95
18	76	3	13	128
19	51	1	1	91
>19	44	2	0	146
Total	269	12	52	527



Average Age	COMMITTED	PROBATIONER	AFTERCARE	Total
Average Age	18.11	17.83	16.62	18.71

Sentencing County

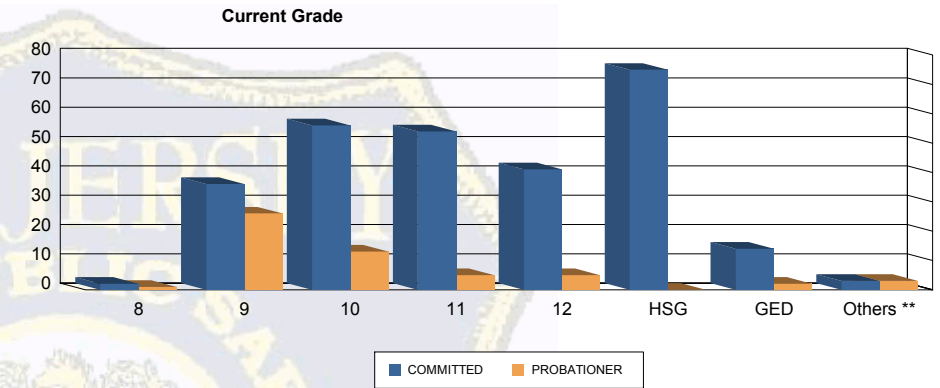
County	COMMITTED	PROBATIONER	AFTERCARE	Total
ATLANTIC	18	0	0	21
BERGEN	6	0	3	10
BURLINGTON	7	0	0	10
CAMDEN	50	1	12	105
CAPE MAY	0	1	0	5
CUMBERLAND	10	0	6	28
ESSEX	57	2	3	76
GLOUCESTER	1	1	1	5
HUDSON	9	0	7	32
MERCER	21	3	2	35
MIDDLESEX	19	1	4	40
MONMOUTH	3	0	1	6
MORRIS	5	1	0	19
OCEAN	10	0	0	19
PASSAIC	27	1	4	42
SALEM	2	0	1	3
SUSSEX	2	1	0	3
UNION	20	0	8	54
WARREN	1	0	0	1
OUT OF STATE	1	0	0	6
Total	269	12	52	527





Juvenile Demographics and Statistics

Current Grade	COMMITTED		PROBATIONER		Total
	MALE	FEMALE	MALE	FEMALE	
8	2 (0.74%)	0 0.00%	1 (1.92%)	0 0.00%	3 (0.89%)
9	34 (12.64%)	2 (16.67%)	25 (48.08%)	1 (33.33%)	62 (18.45%)
10	54 (20.07%)	2 (16.67%)	12 (23.08%)	1 (33.33%)	69 (20.54%)
11	52 (19.33%)	2 (16.67%)	4 (7.69%)	1 (33.33%)	59 (17.56%)
12	38 (14.13%)	3 (25.00%)	5 (9.62%)	0 0.00%	46 (13.69%)
HSG	73 (27.14%)	2 (16.67%)	0 0.00%	0 0.00%	75 (22.32%)
GED	13 (4.83%)	1 (8.33%)	2 (3.85%)	0 0.00%	16 (4.76%)
Others **	3 (1.12%)	0 0.00%	3 (5.77%)	0 0.00%	6 (1.79%)
Total	269 (100.00%)	12 (100.00%)	52 (100.00%)	3 (100.00%)	336 (100.00%)

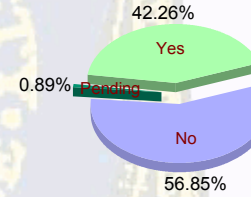


** Includes Aged Out Juveniles and Pending Records

Special Education Services

Yes	114 (42.38%)	6 (50.00%)	20 (38.46%)	2 (66.67%)	142 (42.26%)
No	155 (57.62%)	6 (50.00%)	29 (55.77%)	1 (33.33%)	191 (56.85%)
Pending	0 0.00%	0 0.00%	3 (5.77%)	0 0.00%	3 (0.89%)
Total	269 (100.00%)	12 (100.00%)	52 (100.00%)	3 (100.00%)	336 (100.00%)

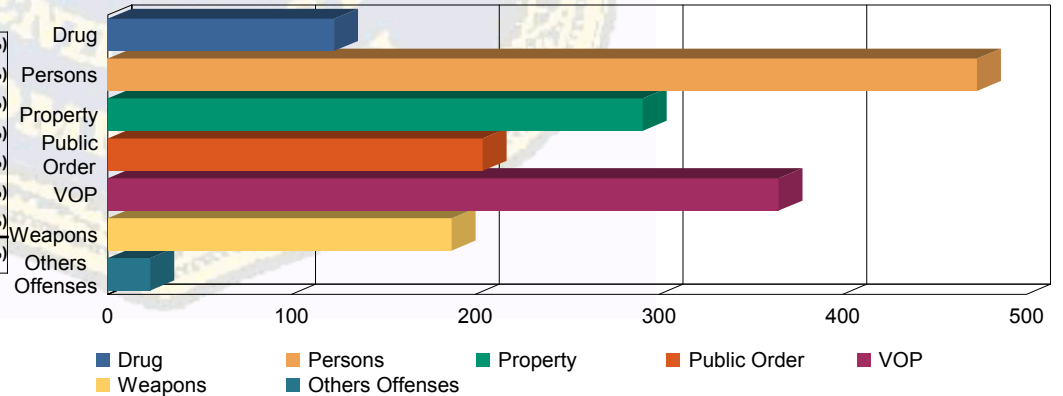
Special Education



Offense Categories

Drug	112 (7.61%)	3 (4.69%)	8 (6.35%)	0 0.00%	123 (7.38%)
Persons	423 (28.74%)	16 (25.00%)	33 (26.19%)	1 (25.00%)	473 (28.39%)
Property	266 (18.07%)	12 (18.75%)	13 (10.32%)	0 0.00%	291 (17.47%)
Public Order	181 (12.30%)	10 (15.63%)	13 (10.32%)	0 0.00%	204 (12.24%)
VOP	301 (20.45%)	15 (23.44%)	46 (36.51%)	3 (75.00%)	365 (21.91%)
Weapons	167 (11.35%)	7 (10.94%)	13 (10.32%)	0 0.00%	187 (11.22%)
Others Offenses	22 (1.49%)	1 (1.56%)	0 0.00%	0 0.00%	23 (1.38%)
Total *	1,472 (100.00%)	64 (100.00%)	126 (100.00%)	4 (100.00%)	1,666 (100.00%)

Offense Categories



* Juveniles may have multiple offenses