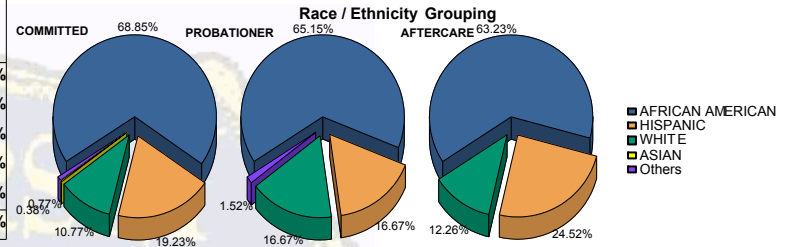


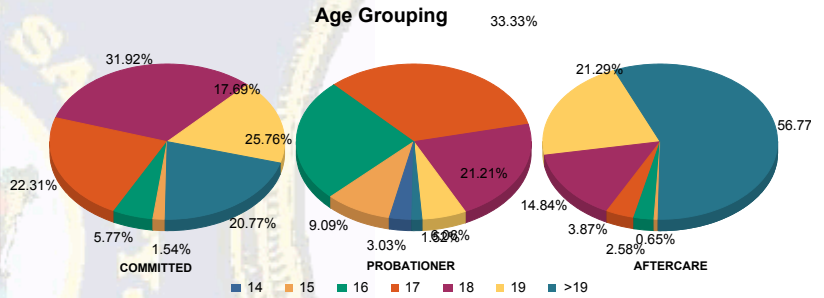


Juvenile Demographics and Statistics

Race/Ethnicity	COMMITTED		PROBATIONER		AFTERCARE		Total							
	MALE	FEMALE	MALE	FEMALE	MALE	FEMALE								
AFRICAN AMERICAN	172	69.92%	7	50.00%	41	68.33%	2	33.33%	94	64.83%	4	40.00%	320	66.53%
HISPANIC	49	19.92%	1	7.14%	10	16.67%	1	16.67%	35	24.14%	3	30.00%	99	20.58%
WHITE	22	8.94%	6	42.86%	8	13.33%	3	50.00%	16	11.03%	3	30.00%	58	12.06%
ASIAN	1	0.41%	0	0.00%	0	0.00%	0	0.00%	0	0.00%	0	0.00%	1	0.21%
Others	2	0.81%	0	0.00%	1	1.67%	0	0.00%	0	0.00%	0	0.00%	3	0.62%
Total	246	100.00%	14	100.00%	60	100.00%	6	100.00%	145	100.00%	10	100.00%	481	100.00%



Age	COMMITTED	PROBATIONER	AFTERCARE	Total
14	0	0	2	2
15	4	5	1	11
16	14	17	0	36
17	53	20	6	86
18	79	13	20	120
19	43	3	32	83
>19	53	1	82	143
Total	246	14	60	481

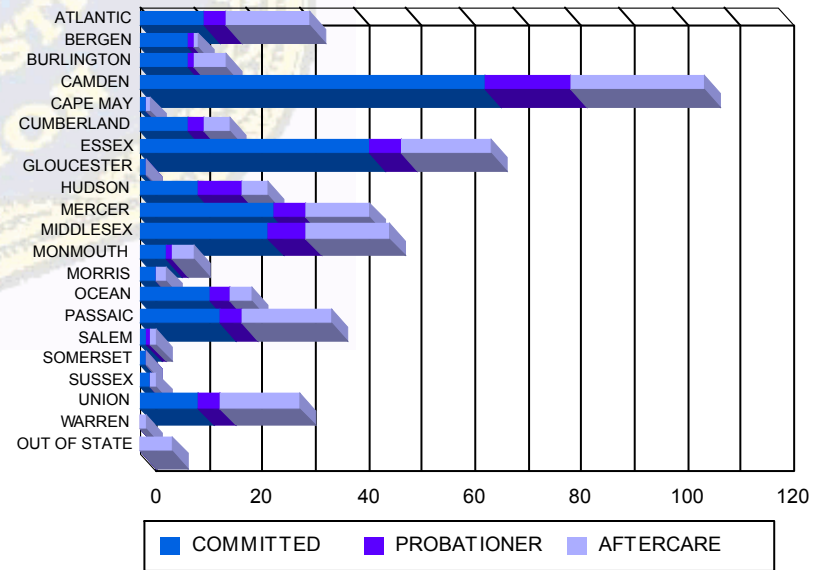


Average Age	COMMITTED	PROBATIONER	AFTERCARE	Total
Average Age	18.39	18.00	16.77	17.67
				20.39
				19.90
				18.80

Sentencing County

Sentencing County	COMMITTED	PROBATIONER	AFTERCARE	Total
ATLANTIC	12	4	15	32
BERGEN	9	1	1	11
BURLINGTON	7	2	5	16
CAMDEN	59	13	23	106
CAPE MAY	1	0	1	2
CUMBERLAND	9	3	5	17
ESSEX	42	6	16	66
GLOUCESTER	1	0	0	1
HUDSON	11	8	5	24
MERCER	24	5	11	43
MIDDLESEX	22	7	15	47
MONMOUTH	5	1	4	10
MORRIS	3	0	2	5
OCEAN	13	2	4	21
PASSAIC	15	4	16	36
SALEM	1	1	1	3
SOMERSET	1	0	0	1
SUSSEX	1	1	1	3
UNION	10	4	13	30
WARREN	0	0	1	1
OUT OF STATE	0	0	6	6
Total	246	14	60	481

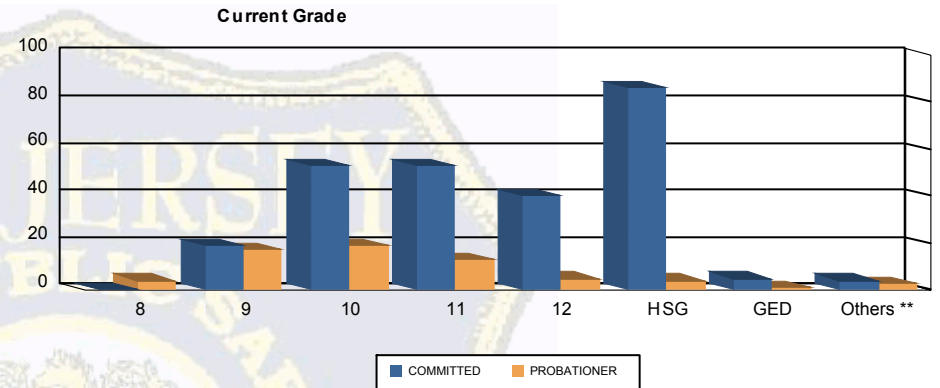
Count of Juveniles By Sentencing County





Juvenile Demographics and Statistics

Current Grade	COMMITTED		PROBATIONER		Total	
	MALE	FEMALE	MALE	FEMALE		
8	0 (0.00%)	0 (0.00%)	4 (6.67%)	0 (0.00%)	4 (1.23%)	
9	16 (6.50%)	3 (21.43%)	16 (26.67%)	1 (16.67%)	36 (11.04%)	
10	47 (19.11%)	6 (42.86%)	17 (28.33%)	2 (33.33%)	72 (22.09%)	
11	52 (21.14%)	1 (7.14%)	12 (20.00%)	1 (16.67%)	66 (20.25%)	
12	39 (15.85%)	1 (7.14%)	5 (8.33%)	0 (0.00%)	45 (13.80%)	
HSG	84 (34.15%)	2 (14.29%)	3 (5.00%)	1 (16.67%)	90 (27.61%)	
GED	5 (2.03%)	0 (0.00%)	0 (0.00%)	1 (16.67%)	6 (1.84%)	
Others **	3 (1.22%)	1 (7.14%)	3 (5.00%)	0 (0.00%)	7 (2.15%)	
Total	246 (100.00%)	14 (100.00%)	60 (100.00%)	6 (100.00%)	326 (100.00%)	

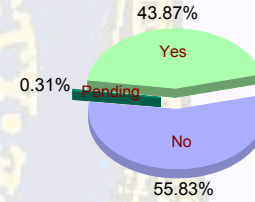


** Includes Aged Out Juveniles and Pending Records

Special Education Services

Yes	106 (43.09%)	6 (42.86%)	28 (46.67%)	3 (50.00%)	143 (43.87%)
No	140 (56.91%)	8 (57.14%)	31 (51.67%)	3 (50.00%)	182 (55.83%)
Pending	0 (0.00%)	0 (0.00%)	1 (1.67%)	0 (0.00%)	1 (0.31%)
Total	246 (100.00%)	14 (100.00%)	60 (100.00%)	6 (100.00%)	326 (100.00%)

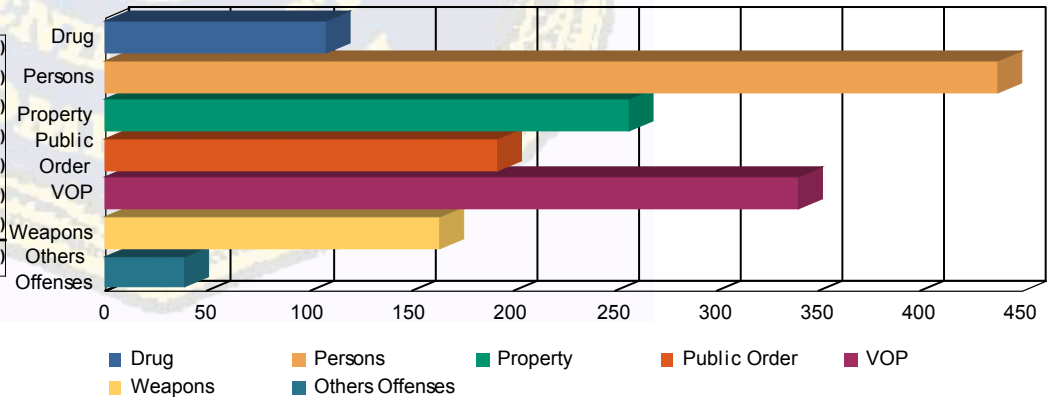
Special Education



Offense Categories

Drug	82 (6.43%)	7 (9.21%)	17 (9.88%)	2 (14.29%)	108 (7.02%)
Persons	379 (29.70%)	16 (21.05%)	41 (23.84%)	2 (14.29%)	438 (28.48%)
Property	226 (17.71%)	10 (13.16%)	20 (11.63%)	1 (7.14%)	257 (16.71%)
Public Order	159 (12.46%)	16 (21.05%)	14 (8.14%)	3 (21.43%)	192 (12.48%)
VOP	264 (20.69%)	17 (22.37%)	53 (30.81%)	6 (42.86%)	340 (22.11%)
Weapons	139 (10.89%)	8 (10.53%)	17 (9.88%)	0 (0.00%)	164 (10.66%)
Others Offenses	27 (2.12%)	2 (2.63%)	10 (5.81%)	0 (0.00%)	39 (2.54%)
Total *	1,276 (100.00%)	76 (100.00%)	172 (100.00%)	14 (100.00%)	1,538 (100.00%)

Offense Categories



* Juveniles may have multiple offenses