



Juvenile Demographics and Statistics

Race/ Ethnicity	COMMITTED				WAIVED				PROBATIONER				AFTERCARE				Total	
	MALE	FEMALE	MALE	FEMALE	MALE	FEMALE	MALE	FEMALE	MALE	FEMALE	MALE	FEMALE	MALE	FEMALE				
BLACK	152	73.43%	6	60.00%	29	61.70%	3	100.00%	32	62.75%	2	100.00%	104	67.10%	5	50.00%	333	68.66%
HISPANIC	37	17.87%	1	10.00%	13	27.66%	0	0.00%	12	23.53%	0	0.00%	32	20.65%	2	20.00%	97	20.00%
WHITE	17	8.21%	3	30.00%	4	8.51%	0	0.00%	6	11.76%	0	0.00%	19	12.26%	3	30.00%	52	10.72%
Others	1	0.48%	0	0.00%	1	2.13%	0	0.00%	1	1.96%	0	0.00%	0	0.00%	0	0.00%	3	0.62%
Total	207	100.00%	10	100.00%	47	100.00%	3	100.00%	51	100.00%	2	100.00%	155	100.00%	10	100.00%	485	100.00%

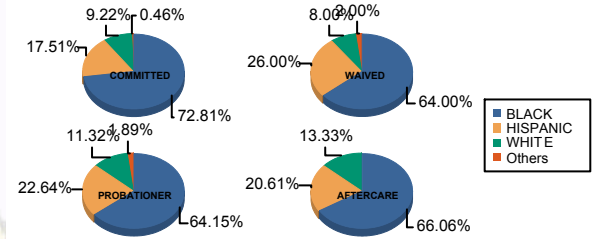
Age

13 and Below	1	0.48%	0	0.00%	0	0.00%	0	0.00%	0	0.00%	0	0.00%	0	0.00%	0	0.00%	1	0.21%
14	2	0.97%	0	0.00%	0	0.00%	0	0.00%	1	1.96%	0	0.00%	1	0.65%	0	0.00%	4	0.82%
15	6	2.90%	0	0.00%	0	0.00%	0	0.00%	4	7.84%	0	0.00%	1	0.65%	0	0.00%	11	2.27%
16	20	9.66%	2	20.00%	2	4.26%	0	0.00%	15	29.41%	0	0.00%	3	1.94%	0	0.00%	42	8.66%
17	37	17.87%	1	10.00%	7	14.89%	0	0.00%	15	29.41%	2	100.00%	10	6.45%	1	10.00%	73	15.05%
18	59	28.50%	1	10.00%	6	12.77%	1	33.33%	15	29.41%	0	0.00%	23	14.84%	2	20.00%	107	22.06%
19	40	19.32%	4	40.00%	21	44.68%	0	0.00%	1	1.96%	0	0.00%	34	21.94%	1	10.00%	101	20.82%
20 and Above	42	20.29%	2	20.00%	11	23.40%	2	66.67%	0	0.00%	0	0.00%	83	53.55%	6	60.00%	146	30.10%
Total	207	100.00%	10	100.00%	47	100.00%	3	100.00%	51	100.00%	2	100.00%	155	100.00%	10	100.00%	485	100.00%
Average Age	18.24		18.60		18.74		19.33		16.82		17.00		20.38		20.10		18.87	

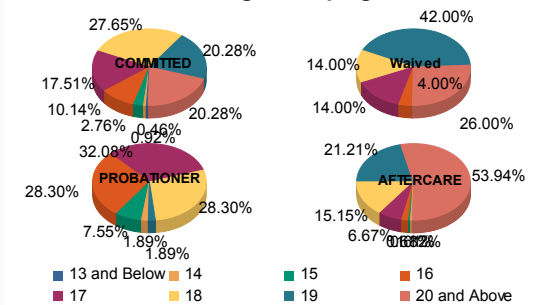
Sentencing County

ATL	4	1.93%	0	0.00%	5	10.64%	0	0.00%	0	0.00%	0	0.00%	8	5.16%	1	10.00%	18	3.71%
BER	5	2.42%	0	0.00%	0	0.00%	0	0.00%	3	5.88%	0	0.00%	3	1.94%	0	0.00%	11	2.27%
BUR	10	4.83%	2	20.00%	1	2.13%	0	0.00%	3	5.88%	0	0.00%	3	1.94%	0	0.00%	19	3.92%
CAM	49	23.67%	4	40.00%	7	14.89%	3	100.00%	11	21.57%	2	100.00%	26	16.77%	0	0.00%	102	21.03%
CAP	0	0.00%	0	0.00%	0	0.00%	0	0.00%	1	1.96%	0	0.00%	1	0.65%	0	0.00%	2	0.41%
CUM	7	3.38%	0	0.00%	0	0.00%	0	0.00%	2	3.92%	0	0.00%	4	2.58%	0	0.00%	13	2.68%
ESS	34	16.43%	0	0.00%	4	8.51%	0	0.00%	4	7.84%	0	0.00%	17	10.97%	2	20.00%	61	12.58%
GLO	0	0.00%	0	0.00%	0	0.00%	0	0.00%	0	0.00%	0	0.00%	1	0.65%	0	0.00%	1	0.21%
HUD	6	2.90%	0	0.00%	0	0.00%	0	0.00%	2	3.92%	0	0.00%	7	4.52%	0	0.00%	15	3.09%
MER	14	6.76%	0	0.00%	5	10.64%	0	0.00%	4	7.84%	0	0.00%	20	12.90%	3	30.00%	46	9.48%
MID	29	14.01%	3	30.00%	7	14.89%	0	0.00%	7	13.73%	0	0.00%	14	9.03%	1	10.00%	61	12.58%
MON	6	2.90%	0	0.00%	4	8.51%	0	0.00%	2	3.92%	0	0.00%	4	2.58%	0	0.00%	16	3.30%
MOR	2	0.97%	0	0.00%	0	0.00%	0	0.00%	0	0.00%	0	0.00%	0	0.00%	0	0.00%	2	0.41%
OCE	6	2.90%	0	0.00%	4	8.51%	0	0.00%	4	7.84%	0	0.00%	6	3.87%	0	0.00%	20	4.12%
PAS	21	10.14%	0	0.00%	10	21.28%	0	0.00%	5	9.80%	0	0.00%	17	10.97%	1	10.00%	54	11.13%
SAL	0	0.00%	0	0.00%	0	0.00%	0	0.00%	0	0.00%	0	0.00%	2	1.29%	0	0.00%	2	0.41%
SOM	1	0.48%	0	0.00%	0	0.00%	0	0.00%	0	0.00%	0	0.00%	2	1.29%	0	0.00%	3	0.62%
SUS	1	0.48%	0	0.00%	0	0.00%	0	0.00%	0	0.00%	0	0.00%	1	0.65%	1	10.00%	3	0.62%
UNI	12	5.80%	1	10.00%	0	0.00%	0	0.00%	3	5.88%	0	0.00%	15	9.68%	1	10.00%	32	6.60%
OTHER	0	0.00%	0	0.00%	0	0.00%	0	0.00%	0	0.00%	0	0.00%	4	2.58%	0	0.00%	4	0.82%
Total	207	100.00%	10	100.00%	47	100.00%	3	100.00%	51	100.00%	2	100.00%	155	100.00%	10	100.00%	485	100.00%

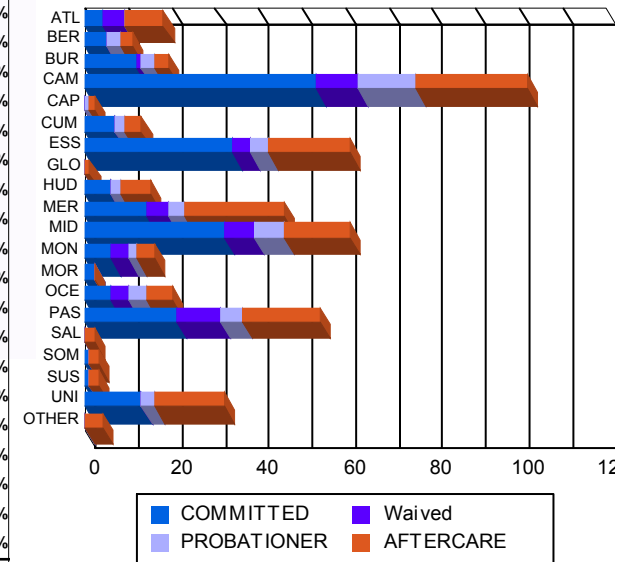
Race/Ethnicity Grouping



Age Grouping



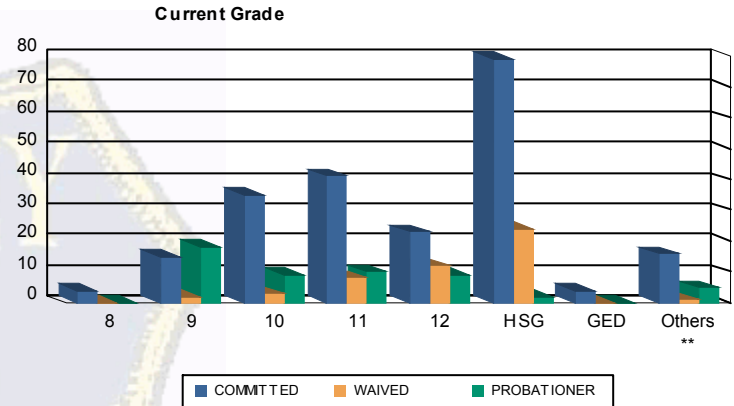
Count of Juveniles By Sentencing County





Juvenile Demographics and Statistics

Current Grade	COMMITTED		WAIVED		PROBATIONER		Total
	MALE	FEMALE	MALE	FEMALE	MALE	FEMALE	
8	4 (1.93%)	0 0.00%	0 0.00%	0 0.00%	0 0.00%	0 0.00%	4 (1.25%)
9	14 (6.76%)	1 (10.00%)	2 (4.26%)	0 0.00%	17 (33.33%)	1 (50.00%)	35 (10.94%)
10	34 (16.43%)	1 (10.00%)	3 (6.38%)	0 0.00%	9 (17.65%)	0 0.00%	47 (14.69%)
11	37 (17.87%)	4 (40.00%)	8 (17.02%)	0 0.00%	9 (17.65%)	1 (50.00%)	59 (18.44%)
12	23 (11.11%)	0 0.00%	11 (23.40%)	1 (33.33%)	9 (17.65%)	0 0.00%	44 (13.75%)
HSG	77 (37.20%)	2 (20.00%)	22 (46.81%)	2 (66.67%)	2 (3.92%)	0 0.00%	105 (32.81%)
GED	4 (1.93%)	0 0.00%	0 0.00%	0 0.00%	0 0.00%	0 0.00%	4 (1.25%)
Others **	14 (6.76%)	2 (20.00%)	1 (2.13%)	0 0.00%	5 (9.80%)	0 0.00%	22 (6.88%)
Total	207 (100.00%)	10 (100.00%)	47 (100.00%)	3 (100.00%)	51 (100.00%)	2 (100.00%)	320 (100.00%)

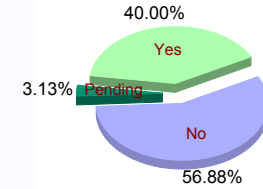


** Includes Aged Out Juveniles and Pending Records

Special Education Services

	Yes	No	Pending	Total
Yes	84 (40.58%)	3 (30.00%)	14 (29.79%)	2 (66.67%)
No	118 (57.00%)	7 (70.00%)	33 (70.21%)	1 (33.33%)
Pending	5 (2.42%)	0 0.00%	0 0.00%	0 0.00%
Total	207 (100.00%)	10 (100.00%)	47 (100.00%)	3 (100.00%)

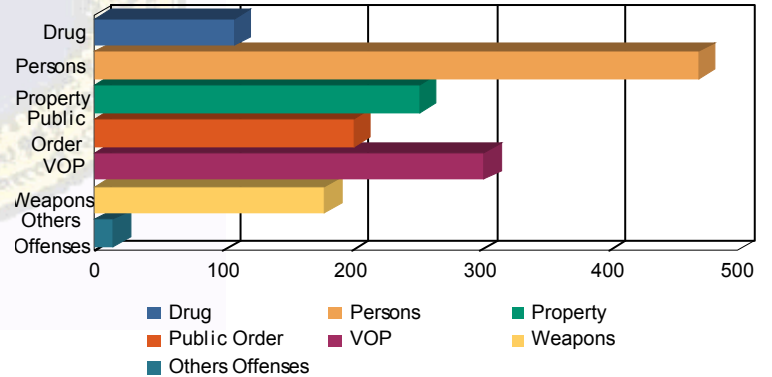
Special Education



Offense Categories

	Drug	Persons	Property	Public Order	VOP	Weapons	Others Offenses	Total *
Drug	83 (6.60%)	6 (10.34%)	5 (6.10%)	1 (7.14%)	14 (12.28%)	0 0.00%	109 (7.12%)	
Persons	376 (29.91%)	15 (25.86%)	40 (48.78%)	5 (35.71%)	32 (28.07%)	2 (33.33%)	470 (30.70%)	
Property	220 (17.50%)	9 (15.52%)	4 (4.88%)	2 (14.29%)	16 (14.04%)	2 (33.33%)	253 (16.53%)	
Public Order	165 (13.13%)	11 (18.97%)	9 (10.98%)	2 (14.29%)	14 (12.28%)	1 (16.67%)	202 (13.19%)	
VOP	255 (20.29%)	11 (18.97%)	6 (7.32%)	2 (14.29%)	28 (24.56%)	1 (16.67%)	303 (19.79%)	
Weapons	146 (11.61%)	5 (8.62%)	17 (20.73%)	1 (7.14%)	10 (8.77%)	0 0.00%	179 (11.69%)	
Others Offenses	12 (0.95%)	1 (1.72%)	1 (1.22%)	1 (7.14%)	0 0.00%	0 0.00%	15 (0.98%)	
Total *	1,257 (100.00%)	58 (100.00%)	82 (100.00%)	14 (100.00%)	114 (100.00%)	6 (100.00%)	1,531 (100.00%)	

Offense Categories



* Juveniles may have multiple offenses