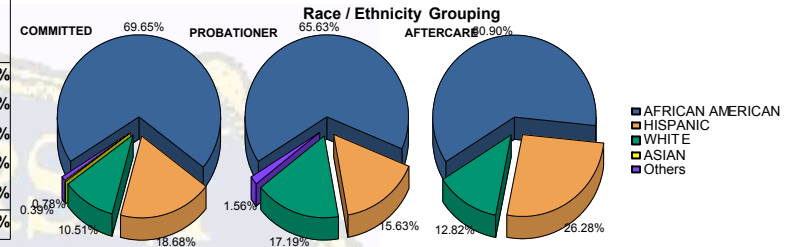


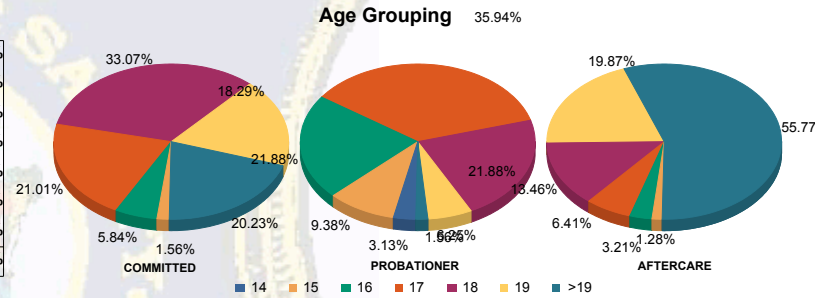


Juvenile Demographics and Statistics

Race/Ethnicity	COMMITTED		PROBATIONER		AFTERCARE		Total							
	MALE	FEMALE	MALE	FEMALE	MALE	FEMALE								
AFRICAN AMERICAN	173	70.61%	6	50.00%	40	68.97%	2	33.33%	90	62.50%	5	41.67%	316	66.25%
HISPANIC	47	19.18%	1	8.33%	9	15.52%	1	16.67%	39	27.08%	2	16.67%	99	20.75%
WHITE	22	8.98%	5	41.67%	8	13.79%	3	50.00%	15	10.42%	5	41.67%	58	12.16%
ASIAN	1	0.41%	0	0.00%	0	0.00%	0	0.00%	0	0.00%	0	0.00%	1	0.21%
Others	2	0.82%	0	0.00%	1	1.72%	0	0.00%	0	0.00%	0	0.00%	3	0.63%
Total	245	100.00%	12	100.00%	58	100.00%	6	100.00%	144	100.00%	12	100.00%	477	100.00%



Age	COMMITTED	PROBATIONER	AFTERCARE	Total
14	0	0	2	2
15	4	0	5	9
16	14	1	0	15
17	51	3	21	75
18	81	4	13	98
19	44	3	3	50
>19	51	1	0	52
Total	245	12	58	415

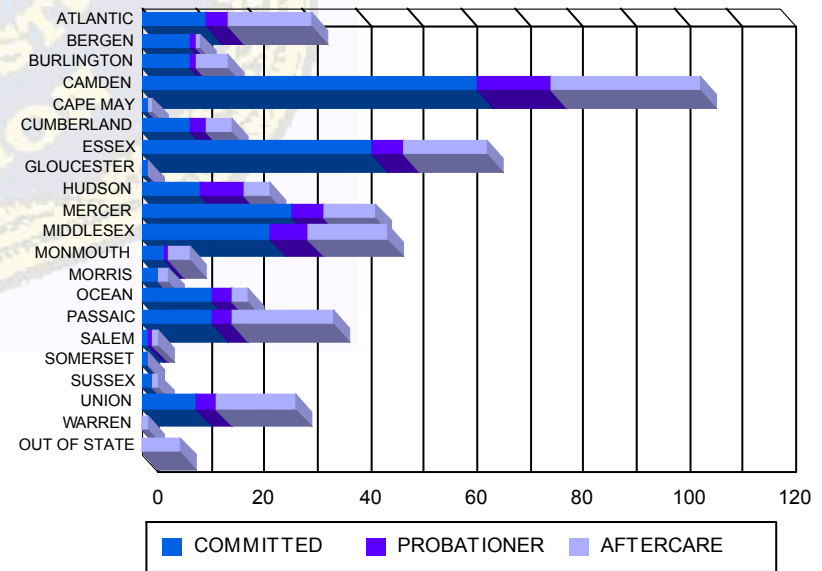


Average Age	COMMITTED	PROBATIONER	AFTERCARE	Total
Average Age	18.39	18.17	16.81	17.67
				20.34
				19.00
				18.79

Sentencing County

Sentencing County	COMMITTED	PROBATIONER	AFTERCARE	Total
ATLANTIC	12	0	4	16
BERGEN	9	0	1	10
BURLINGTON	7	2	1	10
CAMDEN	58	5	11	74
CAPE MAY	1	0	0	1
CUMBERLAND	9	0	3	12
ESSEX	42	1	6	49
GLOUCESTER	1	0	0	1
HUDSON	11	4	8	23
MERCER	27	1	5	33
MIDDLESEX	22	2	7	31
MONMOUTH	4	0	1	5
MORRIS	3	0	0	3
OCEAN	13	0	2	15
PASSAIC	13	0	4	17
SALEM	1	0	1	2
SOMERSET	1	0	0	1
SUSSEX	1	1	0	2
UNION	10	0	4	14
WARREN	0	0	0	0
OUT OF STATE	0	0	0	0
Total	245	12	58	415

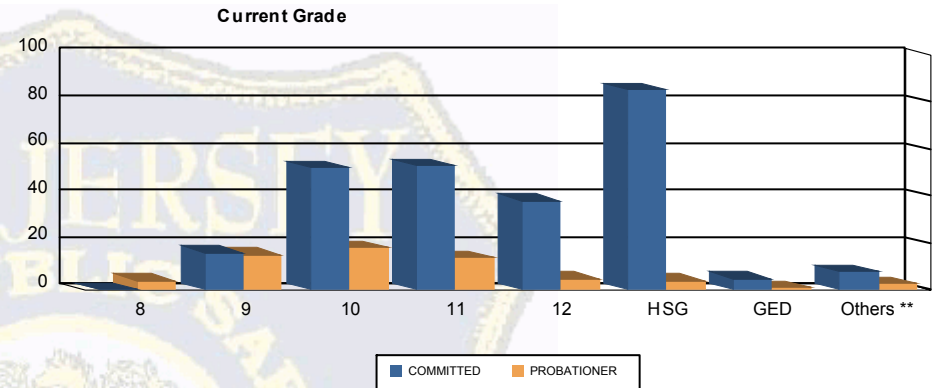
Count of Juveniles By Sentencing County





Juvenile Demographics and Statistics

Current Grade	COMMITTED		PROBATIONER		Total	
	MALE	FEMALE	MALE	FEMALE		
8	0 (0.00%)	0 (0.00%)	4 (6.90%)	0 (0.00%)	4 (1.25%)	
9	15 (6.12%)	1 (8.33%)	14 (24.14%)	1 (16.67%)	31 (9.66%)	
10	46 (18.78%)	6 (50.00%)	17 (29.31%)	1 (16.67%)	70 (21.81%)	
11	52 (21.22%)	1 (8.33%)	12 (20.69%)	2 (33.33%)	67 (20.87%)	
12	37 (15.10%)	1 (8.33%)	5 (8.62%)	0 (0.00%)	43 (13.40%)	
HSG	83 (33.88%)	2 (16.67%)	3 (5.17%)	1 (16.67%)	89 (27.73%)	
GED	5 (2.04%)	0 (0.00%)	0 (0.00%)	1 (16.67%)	6 (1.87%)	
Others **	7 (2.86%)	1 (8.33%)	3 (5.17%)	0 (0.00%)	11 (3.43%)	
Total	245 (100.00%)	12 (100.00%)	58 (100.00%)	6 (100.00%)	321 (100.00%)	

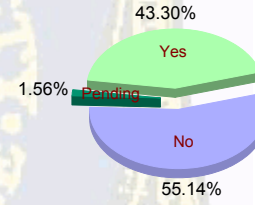


** Includes Aged Out Juveniles and Pending Records

Special Education Services

Yes	105 (42.86%)	5 (41.67%)	26 (44.83%)	3 (50.00%)	139 (43.30%)
No	136 (55.51%)	7 (58.33%)	31 (53.45%)	3 (50.00%)	177 (55.14%)
Pending	4 (1.63%)	0 (0.00%)	1 (1.72%)	0 (0.00%)	5 (1.56%)
Total	245 (100.00%)	12 (100.00%)	58 (100.00%)	6 (100.00%)	321 (100.00%)

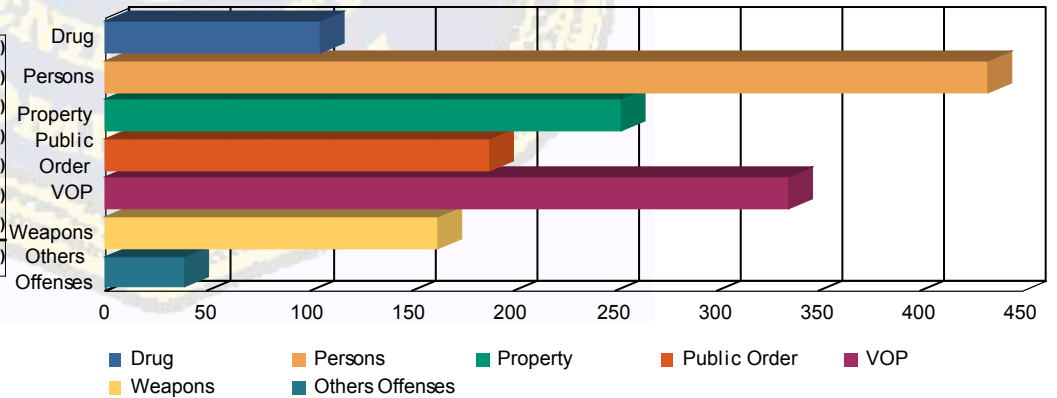
Special Education



Offense Categories

Drug	81 (6.41%)	6 (8.33%)	16 (9.58%)	2 (14.29%)	105 (6.93%)
Persons	375 (29.69%)	16 (22.22%)	40 (23.95%)	2 (14.29%)	433 (28.56%)
Property	224 (17.74%)	9 (12.50%)	19 (11.38%)	1 (7.14%)	253 (16.69%)
Public Order	157 (12.43%)	15 (20.83%)	13 (7.78%)	3 (21.43%)	188 (12.40%)
VOP	261 (20.67%)	16 (22.22%)	52 (31.14%)	6 (42.86%)	335 (22.10%)
Weapons	138 (10.93%)	8 (11.11%)	17 (10.18%)	0 (0.00%)	163 (10.75%)
Others Offenses	27 (2.14%)	2 (2.78%)	10 (5.99%)	0 (0.00%)	39 (2.57%)
Total *	1,263 (100.00%)	72 (100.00%)	167 (100.00%)	14 (100.00%)	1,516 (100.00%)

Offense Categories



* Juveniles may have multiple offenses