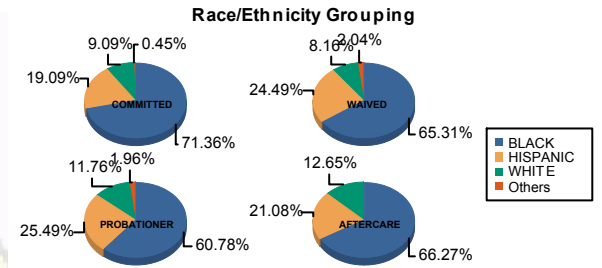




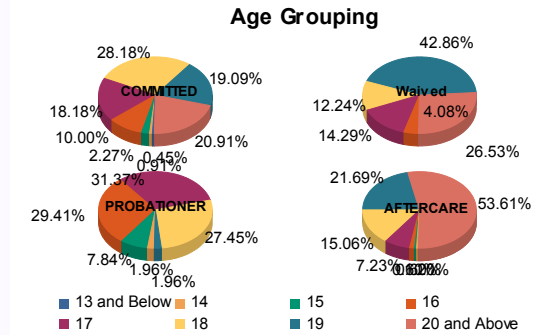
Juvenile Demographics and Statistics

Race/ Ethnicity	COMMITTED				WAIVED				PROBATIONER				AFTERCARE				Total	
	MALE	FEMALE	MALE	FEMALE	MALE	FEMALE	MALE	FEMALE	MALE	FEMALE	MALE	FEMALE	MALE	FEMALE				
BLACK	151	71.90%	6	60.00%	29	63.04%	3	100.00%	29	59.18%	2	100.00%	105	67.31%	5	50.00%	330	67.90%
HISPANIC	41	19.52%	1	10.00%	12	26.09%	0	0.00%	13	26.53%	0	0.00%	33	21.15%	2	20.00%	102	20.99%
WHITE	17	8.10%	3	30.00%	4	8.70%	0	0.00%	6	12.24%	0	0.00%	18	11.54%	3	30.00%	51	10.49%
Others	1	0.48%	0	0.00%	1	2.17%	0	0.00%	1	2.04%	0	0.00%	0	0.00%	0	0.00%	3	0.62%
<b>Total</b>	<b>210</b>	<b>100.00%</b>	<b>10</b>	<b>100.00%</b>	<b>46</b>	<b>100.00%</b>	<b>3</b>	<b>100.00%</b>	<b>49</b>	<b>100.00%</b>	<b>2</b>	<b>100.00%</b>	<b>156</b>	<b>100.00%</b>	<b>10</b>	<b>100.00%</b>	<b>486</b>	<b>100.00%</b>



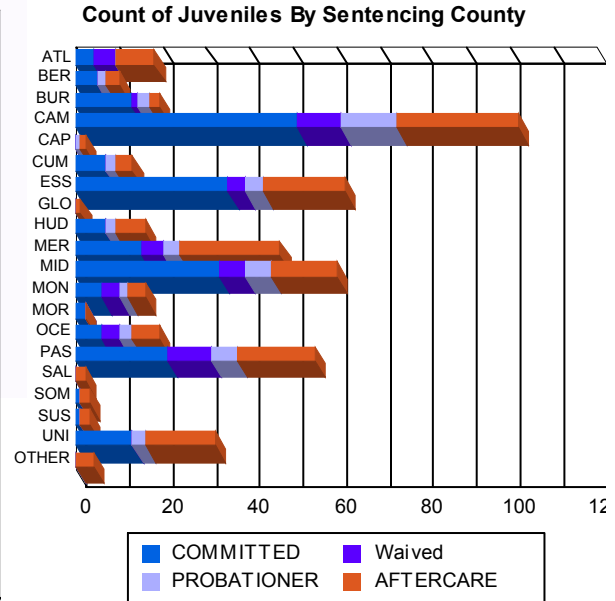
**Age**

Age Group	MALE	FEMALE	MALE	FEMALE	MALE	FEMALE	MALE	FEMALE	MALE	FEMALE	MALE	FEMALE	Total	Percentage
13 and Below	1	0.48%	0	0.00%	0	0.00%	0	0.00%	0	0.00%	0	0.00%	1	0.21%
14	2	0.95%	0	0.00%	0	0.00%	1	2.04%	0	0.00%	1	0.64%	4	0.82%
15	5	2.38%	0	0.00%	0	0.00%	4	8.16%	0	0.00%	1	0.64%	10	2.06%
16	20	9.52%	2	20.00%	2	4.35%	0	0.00%	15	30.61%	0	0.00%	41	8.44%
17	39	18.57%	1	10.00%	7	15.22%	0	0.00%	14	28.57%	2	100.00%	75	15.43%
18	61	29.05%	1	10.00%	5	10.87%	1	33.33%	14	28.57%	0	0.00%	23	4.74%
19	38	18.10%	4	40.00%	21	45.65%	0	0.00%	1	2.04%	0	0.00%	35	7.20%
20 and Above	44	20.95%	2	20.00%	11	23.91%	2	66.67%	0	0.00%	0	0.00%	83	17.08%
<b>Total</b>	<b>210</b>	<b>100.00%</b>	<b>10</b>	<b>100.00%</b>	<b>46</b>	<b>100.00%</b>	<b>3</b>	<b>100.00%</b>	<b>49</b>	<b>100.00%</b>	<b>2</b>	<b>100.00%</b>	<b>156</b>	<b>100.00%</b>



**Sentencing County**

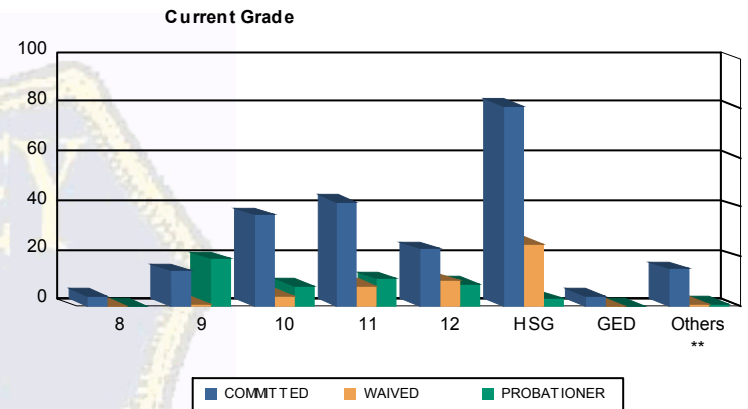
County	MALE	FEMALE	MALE	FEMALE	MALE	FEMALE	MALE	FEMALE	MALE	FEMALE	MALE	FEMALE	Total	Percentage				
ATL	4	1.90%	0	0.00%	5	10.87%	0	0.00%	0	0.00%	8	5.13%	1	10.00%	18	3.70%		
BER	5	2.38%	0	0.00%	0	0.00%	0	0.00%	2	4.08%	0	0.00%	3	1.92%	0	0.00%	10	2.06%
BUR	11	5.24%	2	20.00%	1	2.17%	0	0.00%	3	6.12%	0	0.00%	2	1.28%	0	0.00%	19	3.91%
CAM	47	22.38%	4	40.00%	7	15.22%	3	100.00%	11	22.45%	2	100.00%	28	17.95%	0	0.00%	102	20.99%
CAP	0	0.00%	0	0.00%	0	0.00%	0	0.00%	1	2.04%	0	0.00%	1	0.64%	0	0.00%	2	0.41%
CUM	7	3.33%	0	0.00%	0	0.00%	0	0.00%	2	4.08%	0	0.00%	4	2.56%	0	0.00%	13	2.67%
ESS	35	16.67%	0	0.00%	4	8.70%	0	0.00%	4	8.16%	0	0.00%	17	10.90%	2	20.00%	62	12.76%
GLO	0	0.00%	0	0.00%	0	0.00%	0	0.00%	0	0.00%	0	0.00%	1	0.64%	0	0.00%	1	0.21%
HUD	7	3.33%	0	0.00%	0	0.00%	0	0.00%	2	4.08%	0	0.00%	7	4.49%	0	0.00%	16	3.29%
MER	15	7.14%	0	0.00%	5	10.87%	0	0.00%	4	8.16%	0	0.00%	20	12.82%	3	30.00%	47	9.67%
MID	30	14.29%	3	30.00%	6	13.04%	0	0.00%	6	12.24%	0	0.00%	14	8.97%	1	10.00%	60	12.35%
MON	6	2.86%	0	0.00%	4	8.70%	0	0.00%	2	4.08%	0	0.00%	4	2.56%	0	0.00%	16	3.29%
MOR	2	0.95%	0	0.00%	0	0.00%	0	0.00%	0	0.00%	0	0.00%	0	0.00%	0	0.00%	2	0.41%
OCE	6	2.86%	0	0.00%	4	8.70%	0	0.00%	3	6.12%	0	0.00%	6	3.85%	0	0.00%	19	3.91%
PAS	21	10.00%	0	0.00%	10	21.74%	0	0.00%	6	12.24%	0	0.00%	17	10.90%	1	10.00%	55	11.32%
SAL	0	0.00%	0	0.00%	0	0.00%	0	0.00%	0	0.00%	0	0.00%	2	1.28%	0	0.00%	2	0.41%
SOM	1	0.48%	0	0.00%	0	0.00%	0	0.00%	0	0.00%	0	0.00%	2	1.28%	0	0.00%	3	0.62%
SUS	1	0.48%	0	0.00%	0	0.00%	0	0.00%	0	0.00%	0	0.00%	1	0.64%	1	10.00%	3	0.62%
UNI	12	5.71%	1	10.00%	0	0.00%	0	0.00%	3	6.12%	0	0.00%	15	9.62%	1	10.00%	32	6.58%
OTHER	0	0.00%	0	0.00%	0	0.00%	0	0.00%	0	0.00%	0	0.00%	4	2.56%	0	0.00%	4	0.82%
<b>Total</b>	<b>210</b>	<b>100.00%</b>	<b>10</b>	<b>100.00%</b>	<b>46</b>	<b>100.00%</b>	<b>3</b>	<b>100.00%</b>	<b>49</b>	<b>100.00%</b>	<b>2</b>	<b>100.00%</b>	<b>156</b>	<b>100.00%</b>	<b>10</b>	<b>100.00%</b>	<b>486</b>	<b>100.00%</b>





Juvenile Demographics and Statistics

Current Grade	COMMITTED		WAIVED		PROBATIONER		Total
	MALE	FEMALE	MALE	FEMALE	MALE	FEMALE	
8	4 (1.90%)	0 0.00%	0 0.00%	0 0.00%	0 0.00%	0 0.00%	4 (1.25%)
9	13 (6.19%)	1 (10.00%)	1 (2.17%)	0 0.00%	18 (36.73%)	1 (50.00%)	34 (10.63%)
10	36 (17.14%)	1 (10.00%)	4 (8.70%)	0 0.00%	8 (16.33%)	0 0.00%	49 (15.31%)
11	38 (18.10%)	4 (40.00%)	8 (17.39%)	0 0.00%	10 (20.41%)	1 (50.00%)	61 (19.06%)
12	23 (10.95%)	0 0.00%	9 (19.57%)	1 (33.33%)	9 (18.37%)	0 0.00%	42 (13.13%)
HSG	79 (37.62%)	2 (20.00%)	23 (50.00%)	2 (66.67%)	3 (6.12%)	0 0.00%	109 (34.06%)
GED	4 (1.90%)	0 0.00%	0 0.00%	0 0.00%	0 0.00%	0 0.00%	4 (1.25%)
Others **	13 (6.19%)	2 (20.00%)	1 (2.17%)	0 0.00%	1 (2.04%)	0 0.00%	17 (5.31%)
<b>Total</b>	<b>210 (100.00%)</b>	<b>10 (100.00%)</b>	<b>46 (100.00%)</b>	<b>3 (100.00%)</b>	<b>49 (100.00%)</b>	<b>2 (100.00%)</b>	<b>320 (100.00%)</b>

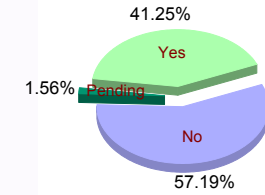


\*\* Includes Aged Out Juveniles and Pending Records

Special Education Services

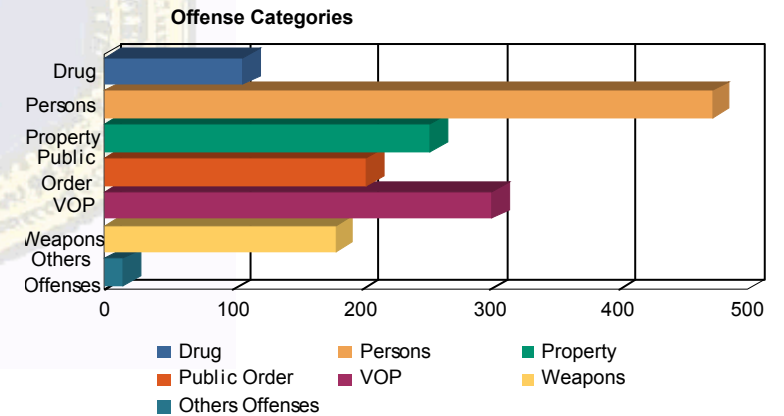
Yes	90 (42.86%)	3 (30.00%)	13 (28.26%)	2 (66.67%)	24 (48.98%)	0 0.00%	132 (41.25%)
No	116 (55.24%)	7 (70.00%)	33 (71.74%)	1 (33.33%)	24 (48.98%)	2 (100.00%)	183 (57.19%)
Pending	4 (1.90%)	0 0.00%	0 0.00%	0 0.00%	1 (2.04%)	0 0.00%	5 (1.56%)
<b>Total</b>	<b>210 (100.00%)</b>	<b>10 (100.00%)</b>	<b>46 (100.00%)</b>	<b>3 (100.00%)</b>	<b>49 (100.00%)</b>	<b>2 (100.00%)</b>	<b>320 (100.00%)</b>

Special Education



Offense Categories

Drug	83 (6.50%)	6 (10.34%)	5 (6.94%)	1 (7.14%)	13 (12.38%)	0 0.00%	108 (7.03%)
Persons	383 (29.99%)	15 (25.86%)	37 (51.39%)	5 (35.71%)	30 (28.57%)	3 (30.00%)	473 (30.79%)
Property	223 (17.46%)	9 (15.52%)	3 (4.17%)	2 (14.29%)	14 (13.33%)	3 (30.00%)	254 (16.54%)
Public Order	169 (13.23%)	11 (18.97%)	7 (9.72%)	2 (14.29%)	14 (13.33%)	1 (10.00%)	204 (13.28%)
VOP	260 (20.36%)	11 (18.97%)	3 (4.17%)	2 (14.29%)	24 (22.86%)	2 (20.00%)	302 (19.66%)
Weapons	146 (11.43%)	5 (8.62%)	17 (23.61%)	1 (7.14%)	10 (9.52%)	1 (10.00%)	180 (11.72%)
Others Offenses	13 (1.02%)	1 (1.72%)	0 0.00%	1 (7.14%)	0 0.00%	0 0.00%	15 (0.98%)
<b>Total *</b>	<b>1,277 (100.00%)</b>	<b>58 (100.00%)</b>	<b>72 (100.00%)</b>	<b>14 (100.00%)</b>	<b>105 (100.00%)</b>	<b>10 (100.00%)</b>	<b>1,536 (100.00%)</b>



\* Juveniles may have multiple offenses