



Juvenile Demographics and Statistics

Race/ Ethnicity	COMMITTED				WAIVED				PROBATIONER				AFTERCARE				Total	
	MALE	FEMALE	MALE	FEMALE	MALE	FEMALE	MALE	FEMALE	MALE	FEMALE	MALE	FEMALE	MALE	FEMALE				
BLACK	152	72.38%	6	60.00%	28	62.22%	3	100.00%	31	60.78%	2	100.00%	105	66.04%	5	50.00%	332	67.76%
HISPANIC	42	20.00%	1	10.00%	12	26.67%	0	0.00%	13	25.49%	0	0.00%	35	22.01%	2	20.00%	105	21.43%
WHITE	15	7.14%	3	30.00%	4	8.89%	0	0.00%	6	11.76%	0	0.00%	19	11.95%	3	30.00%	50	10.20%
Others	1	0.48%	0	0.00%	1	2.22%	0	0.00%	1	1.96%	0	0.00%	0	0.00%	0	0.00%	3	0.61%
Total	210	100.00%	10	100.00%	45	100.00%	3	100.00%	51	100.00%	2	100.00%	159	100.00%	10	100.00%	490	100.00%

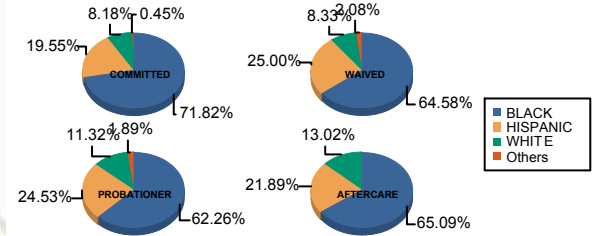
Age

13 and Below	1	0.48%	0	0.00%	0	0.00%	0	0.00%	0	0.00%	0	0.00%	0	0.00%	0	0.00%	1	0.20%
14	2	0.95%	0	0.00%	0	0.00%	0	0.00%	1	1.96%	0	0.00%	1	0.63%	0	0.00%	4	0.82%
15	5	2.38%	0	0.00%	0	0.00%	0	0.00%	4	7.84%	0	0.00%	0	0.00%	0	0.00%	9	1.84%
16	19	9.05%	2	20.00%	2	4.44%	0	0.00%	16	31.37%	0	0.00%	4	2.52%	0	0.00%	43	8.78%
17	39	18.57%	1	10.00%	6	13.33%	0	0.00%	14	27.45%	2	100.00%	10	6.29%	1	10.00%	73	14.90%
18	62	29.52%	1	10.00%	6	13.33%	1	33.33%	15	29.41%	0	0.00%	26	16.35%	2	20.00%	113	23.06%
19	38	18.10%	4	40.00%	18	40.00%	0	0.00%	1	1.96%	0	0.00%	35	22.01%	1	10.00%	97	19.80%
20 and Above	44	20.95%	2	20.00%	13	28.89%	2	66.67%	0	0.00%	0	0.00%	83	52.20%	6	60.00%	150	30.61%
Total	210	100.00%	10	100.00%	45	100.00%	3	100.00%	51	100.00%	2	100.00%	159	100.00%	10	100.00%	490	100.00%
Average Age	18.26		18.60		18.84		19.33		16.80		17.00		20.35		20.20		18.89	

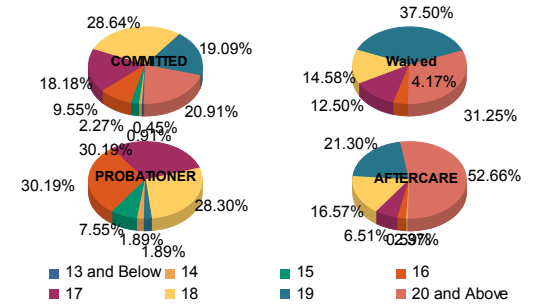
Sentencing County

ATL	4	1.90%	0	0.00%	5	11.11%	0	0.00%	0	0.00%	0	0.00%	8	5.03%	1	10.00%	18	3.67%
BER	5	2.38%	0	0.00%	0	0.00%	0	0.00%	2	3.92%	0	0.00%	4	2.52%	0	0.00%	11	2.24%
BUR	11	5.24%	2	20.00%	1	2.22%	0	0.00%	3	5.88%	0	0.00%	3	1.89%	0	0.00%	20	4.08%
CAM	47	22.38%	4	40.00%	6	13.33%	3	100.00%	12	23.53%	2	100.00%	29	18.24%	0	0.00%	103	21.02%
CAP	0	0.00%	0	0.00%	0	0.00%	0	0.00%	1	1.96%	0	0.00%	1	0.63%	0	0.00%	2	0.41%
CUM	7	3.33%	0	0.00%	0	0.00%	0	0.00%	2	3.92%	0	0.00%	4	2.52%	0	0.00%	13	2.65%
ESS	35	16.67%	0	0.00%	4	8.89%	0	0.00%	4	7.84%	0	0.00%	17	10.69%	2	20.00%	62	12.65%
GLO	0	0.00%	0	0.00%	0	0.00%	0	0.00%	0	0.00%	0	0.00%	1	0.63%	0	0.00%	1	0.20%
HUD	7	3.33%	0	0.00%	0	0.00%	0	0.00%	2	3.92%	0	0.00%	7	4.40%	0	0.00%	16	3.27%
MER	15	7.14%	0	0.00%	5	11.11%	0	0.00%	4	7.84%	0	0.00%	20	12.58%	3	30.00%	47	9.59%
MID	28	13.33%	3	30.00%	6	13.33%	0	0.00%	6	11.76%	0	0.00%	14	8.81%	1	10.00%	58	11.84%
MON	6	2.86%	0	0.00%	4	8.89%	0	0.00%	2	3.92%	0	0.00%	4	2.52%	0	0.00%	16	3.27%
MOR	2	0.95%	0	0.00%	0	0.00%	0	0.00%	0	0.00%	0	0.00%	0	0.00%	0	0.00%	2	0.41%
OCE	6	2.86%	0	0.00%	4	8.89%	0	0.00%	3	5.88%	0	0.00%	6	3.77%	0	0.00%	19	3.88%
PAS	21	10.00%	0	0.00%	10	22.22%	0	0.00%	6	11.76%	0	0.00%	17	10.69%	1	10.00%	55	11.22%
SAL	0	0.00%	0	0.00%	0	0.00%	0	0.00%	0	0.00%	0	0.00%	2	1.26%	0	0.00%	2	0.41%
SOM	1	0.48%	0	0.00%	0	0.00%	0	0.00%	0	0.00%	0	0.00%	2	1.26%	0	0.00%	3	0.61%
SUS	1	0.48%	0	0.00%	0	0.00%	0	0.00%	0	0.00%	0	0.00%	1	0.63%	1	10.00%	3	0.61%
UNI	14	6.67%	1	10.00%	0	0.00%	0	0.00%	4	7.84%	0	0.00%	15	9.43%	1	10.00%	35	7.14%
OTHER	0	0.00%	0	0.00%	0	0.00%	0	0.00%	0	0.00%	0	0.00%	4	2.52%	0	0.00%	4	0.82%
Total	210	100.00%	10	100.00%	45	100.00%	3	100.00%	51	100.00%	2	100.00%	159	100.00%	10	100.00%	490	100.00%

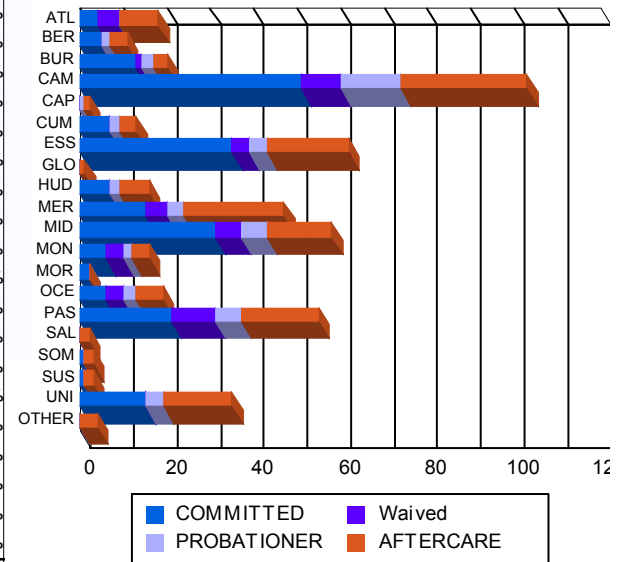
Race/Ethnicity Grouping



Age Grouping



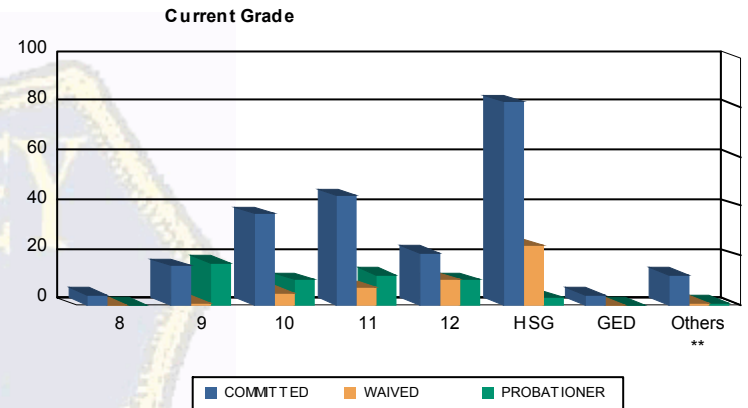
Count of Juveniles By Sentencing County





Juvenile Demographics and Statistics

Current Grade	COMMITTED		WAIVED		PROBATIONER		Total
	MALE	FEMALE	MALE	FEMALE	MALE	FEMALE	
8	4 (1.90%)	0 0.00%	0 0.00%	0 0.00%	0 0.00%	0 0.00%	4 (1.25%)
9	15 (7.14%)	1 (10.00%)	1 (2.22%)	0 0.00%	16 (31.37%)	1 (50.00%)	34 (10.59%)
10	36 (17.14%)	1 (10.00%)	5 (11.11%)	0 0.00%	10 (19.61%)	0 0.00%	52 (16.20%)
11	40 (19.05%)	4 (40.00%)	7 (15.56%)	0 0.00%	11 (21.57%)	1 (50.00%)	63 (19.63%)
12	21 (10.00%)	0 0.00%	9 (20.00%)	1 (33.33%)	10 (19.61%)	0 0.00%	41 (12.77%)
HSG	80 (38.10%)	2 (20.00%)	22 (48.89%)	2 (66.67%)	3 (5.88%)	0 0.00%	109 (33.96%)
GED	4 (1.90%)	0 0.00%	0 0.00%	0 0.00%	0 0.00%	0 0.00%	4 (1.25%)
Others **	10 (4.76%)	2 (20.00%)	1 (2.22%)	0 0.00%	1 (1.96%)	0 0.00%	14 (4.36%)
Total	210 (100.00%)	10 (100.00%)	45 (100.00%)	3 (100.00%)	51 (100.00%)	2 (100.00%)	321 (100.00%)

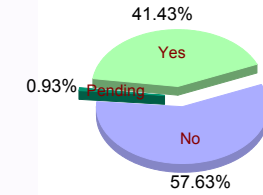


** Includes Aged Out Juveniles and Pending Records

Special Education Services

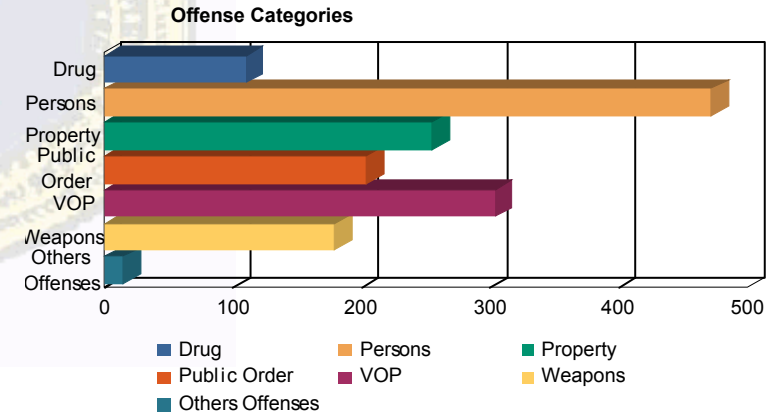
Yes	90 (42.86%)	3 (30.00%)	13 (28.89%)	2 (66.67%)	25 (49.02%)	0 0.00%	133 (41.43%)
No	118 (56.19%)	7 (70.00%)	32 (71.11%)	1 (33.33%)	25 (49.02%)	2 (100.00%)	185 (57.63%)
Pending	2 (0.95%)	0 0.00%	0 0.00%	0 0.00%	1 (1.96%)	0 0.00%	3 (0.93%)
Total	210 (100.00%)	10 (100.00%)	45 (100.00%)	3 (100.00%)	51 (100.00%)	2 (100.00%)	321 (100.00%)

Special Education



Offense Categories

Drug	83 (6.51%)	6 (10.34%)	5 (7.04%)	1 (7.14%)	15 (13.76%)	0 0.00%	110 (7.15%)
Persons	382 (29.96%)	15 (25.86%)	37 (52.11%)	5 (35.71%)	30 (27.52%)	3 (25.00%)	472 (30.67%)
Property	223 (17.49%)	9 (15.52%)	3 (4.23%)	2 (14.29%)	15 (13.76%)	3 (25.00%)	255 (16.57%)
Public Order	169 (13.25%)	11 (18.97%)	7 (9.86%)	2 (14.29%)	14 (12.84%)	1 (8.33%)	204 (13.26%)
VOP	259 (20.31%)	11 (18.97%)	3 (4.23%)	2 (14.29%)	25 (22.94%)	4 (33.33%)	304 (19.75%)
Weapons	146 (11.45%)	5 (8.62%)	16 (22.54%)	1 (7.14%)	10 (9.17%)	1 (8.33%)	179 (11.63%)
Others Offenses	13 (1.02%)	1 (1.72%)	0 0.00%	1 (7.14%)	0 0.00%	0 0.00%	15 (0.97%)
Total *	1,275 (100.00%)	58 (100.00%)	71 (100.00%)	14 (100.00%)	109 (100.00%)	12 (100.00%)	1,539 (100.00%)



* Juveniles may have multiple offenses