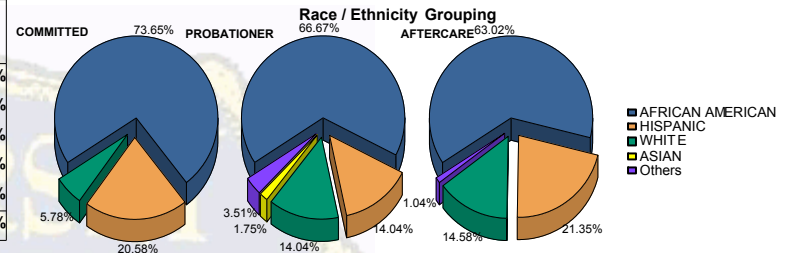




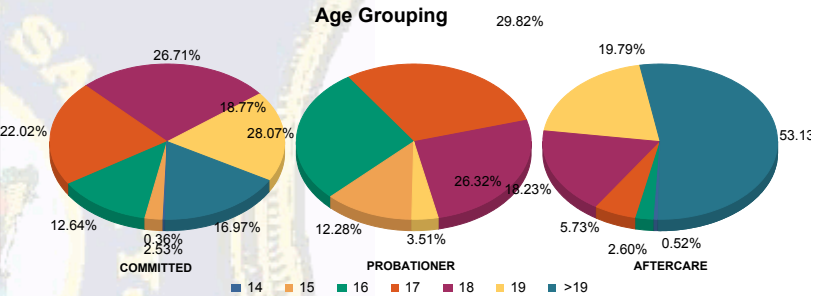
Juvenile Demographics and Statistics

Race/Ethnicity	COMMITTED				PROBATIONER				AFTERCARE				Total	
	MALE	FEMALE	MALE	FEMALE	MALE	FEMALE	MALE	FEMALE	MALE	FEMALE	MALE	FEMALE		
AFRICAN AMERICAN	197	74.34%	7	58.33%	36	67.92%	2	50.00%	113	62.78%	8	66.67%	363	69.01%
HISPANIC	54	20.38%	3	25.00%	7	13.21%	1	25.00%	39	21.67%	2	16.67%	106	20.15%
WHITE	14	5.28%	2	16.67%	7	13.21%	1	25.00%	26	14.44%	2	16.67%	52	9.89%
ASIAN	0	0.00%	0	0.00%	1	1.89%	0	0.00%	0	0.00%	0	0.00%	1	0.19%
Others	0	0.00%	0	0.00%	2	3.77%	0	0.00%	2	1.11%	0	0.00%	4	0.76%
Total	265	100.00%	12	100.00%	53	100.00%	4	100.00%	180	100.00%	12	100.00%	526	100.00%



Age

Age	COMMITTED	PROBATIONER	AFTERCARE	Total
14	1 (0.38%)	0 (0.00%)	0 (0.00%)	2 (0.38%)
15	7 (2.64%)	0 (0.00%)	0 (0.00%)	14 (2.66%)
16	33 (12.45%)	2 (16.67%)	15 (28.30%)	56 (10.65%)
17	58 (21.89%)	3 (25.00%)	15 (28.30%)	89 (16.92%)
18	71 (26.79%)	3 (25.00%)	15 (28.30%)	124 (23.57%)
19	50 (18.87%)	2 (16.67%)	1 (1.89%)	92 (17.49%)
>19	45 (16.98%)	2 (16.67%)	0 (0.00%)	149 (28.33%)
Total	265	12	53	526

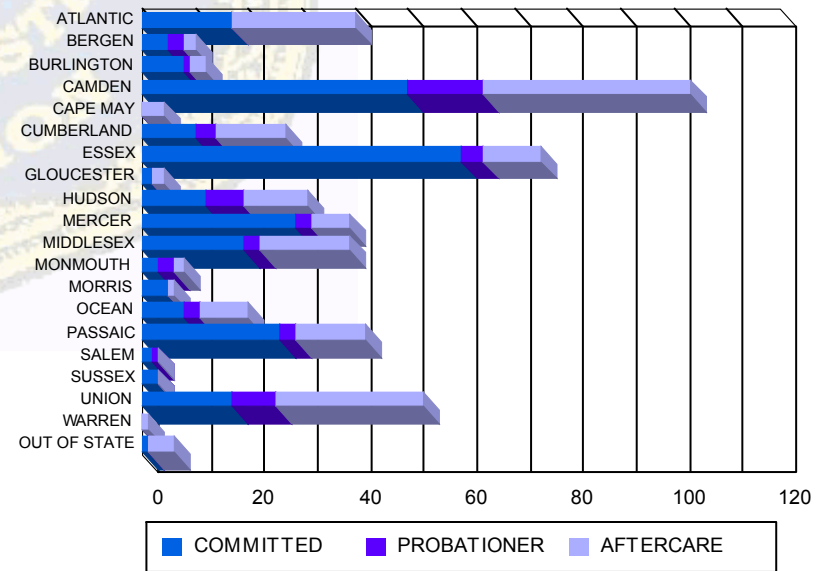


Average Age	COMMITTED	PROBATIONER	AFTERCARE	Total
Average Age	18.13	18.00	16.77	18.74

Sentencing County

County	COMMITTED	PROBATIONER	AFTERCARE	Total
ATLANTIC	17 (6.42%)	0 (0.00%)	0 (0.00%)	21 (11.67%)
BERGEN	5 (1.89%)	0 (0.00%)	3 (5.66%)	2 (1.11%)
BURLINGTON	8 (3.02%)	0 (0.00%)	1 (1.89%)	3 (1.67%)
CAMDEN	48 (18.11%)	2 (16.67%)	11 (20.75%)	36 (20.00%)
CAPE MAY	0 (0.00%)	0 (0.00%)	0 (0.00%)	3 (1.67%)
CUMBERLAND	10 (3.77%)	0 (0.00%)	4 (7.55%)	11 (6.11%)
ESSEX	58 (21.89%)	2 (16.67%)	4 (7.55%)	10 (5.56%)
GLOUCESTER	1 (0.38%)	1 (8.33%)	0 (0.00%)	2 (1.11%)
HUDSON	12 (4.53%)	0 (0.00%)	7 (13.21%)	11 (6.11%)
MERCER	26 (9.81%)	3 (25.00%)	3 (5.66%)	6 (3.33%)
MIDDLESEX	18 (6.79%)	1 (8.33%)	3 (5.66%)	17 (9.44%)
MONMOUTH	3 (1.13%)	0 (0.00%)	3 (5.66%)	2 (1.11%)
MORRIS	4 (1.51%)	1 (8.33%)	0 (0.00%)	1 (0.56%)
OCEAN	8 (3.02%)	0 (0.00%)	2 (3.77%)	1 (25.00%)
PASSAIC	25 (9.43%)	1 (8.33%)	3 (5.66%)	9 (7.22%)
SALEM	2 (0.75%)	0 (0.00%)	1 (1.89%)	0 (0.00%)
SUSSEX	2 (0.75%)	1 (8.33%)	0 (0.00%)	0 (0.00%)
UNION	17 (6.42%)	0 (0.00%)	8 (15.09%)	27 (15.00%)
WARREN	0 (0.00%)	0 (0.00%)	0 (0.00%)	1 (0.56%)
OUT OF STATE	1 (0.38%)	0 (0.00%)	0 (0.00%)	5 (2.78%)
Total	265	12	53	526

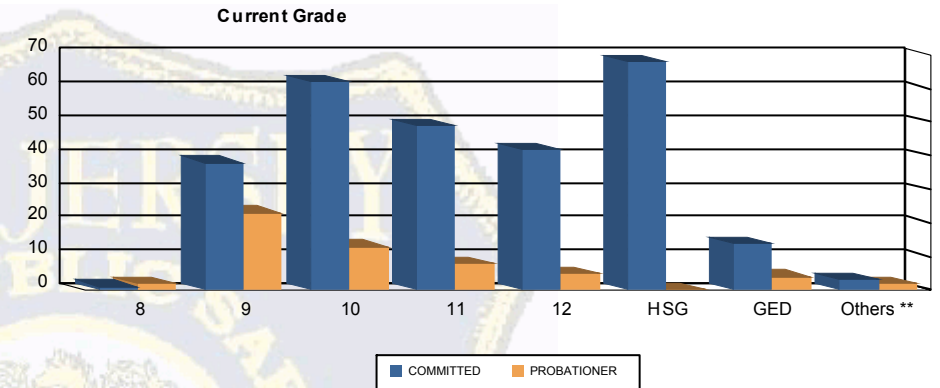
Count of Juveniles By Sentencing County





Juvenile Demographics and Statistics

Current Grade	COMMITTED		PROBATIONER		Total
	MALE	FEMALE	MALE	FEMALE	
8	1 (0.38%)	0 0.00%	2 (3.77%)	0 0.00%	3 (0.90%)
9	35 (13.21%)	3 (25.00%)	23 (43.40%)	0 0.00%	61 (18.26%)
10	60 (22.64%)	2 (16.67%)	12 (22.64%)	1 (25.00%)	75 (22.46%)
11	47 (17.74%)	2 (16.67%)	6 (11.32%)	2 (50.00%)	57 (17.07%)
12	39 (14.72%)	3 (25.00%)	5 (9.43%)	0 0.00%	47 (14.07%)
HSG	67 (25.28%)	1 (8.33%)	0 0.00%	0 0.00%	68 (20.36%)
GED	13 (4.91%)	1 (8.33%)	3 (5.66%)	1 (25.00%)	18 (5.39%)
Others **	3 (1.13%)	0 0.00%	2 (3.77%)	0 0.00%	5 (1.50%)
Total	265 (100.00%)	12 (100.00%)	53 (100.00%)	4 (100.00%)	334 (100.00%)

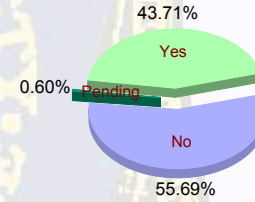


** Includes Aged Out Juveniles and Pending Records

Special Education Services

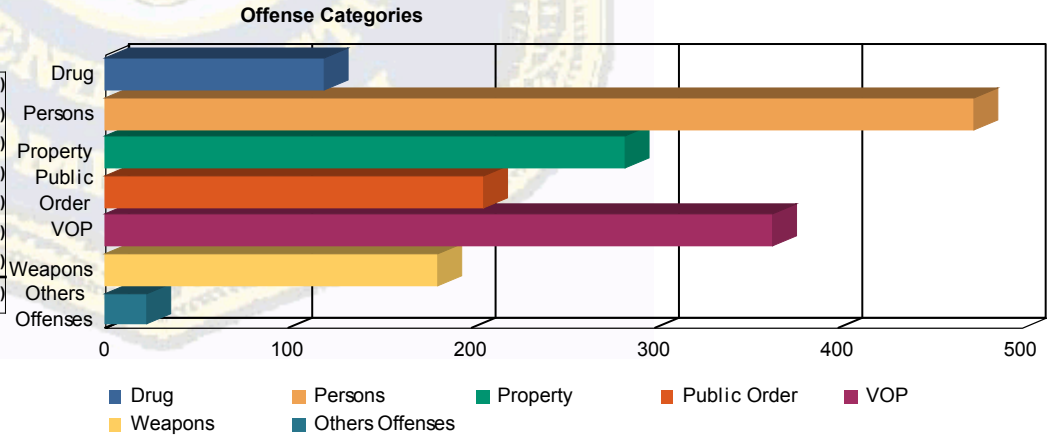
Yes	116 (43.77%)	5 (41.67%)	23 (43.40%)	2 (50.00%)	146 (43.71%)
No	149 (56.23%)	7 (58.33%)	28 (52.83%)	2 (50.00%)	186 (55.69%)
Pending	0 0.00%	0 0.00%	2 (3.77%)	0 0.00%	2 (0.60%)
Total	265 (100.00%)	12 (100.00%)	53 (100.00%)	4 (100.00%)	334 (100.00%)

Special Education



Offense Categories

Drug	105 (7.27%)	4 (5.97%)	10 (7.63%)	0 0.00%	119 (7.22%)
Persons	423 (29.27%)	16 (23.88%)	34 (25.95%)	1 (16.67%)	474 (28.74%)
Property	259 (17.92%)	13 (19.40%)	11 (8.40%)	0 0.00%	283 (17.16%)
Public Order	179 (12.39%)	10 (14.93%)	16 (12.21%)	1 (16.67%)	206 (12.49%)
VOP	297 (20.55%)	16 (23.88%)	47 (35.88%)	4 (66.67%)	364 (22.07%)
Weapons	161 (11.14%)	7 (10.45%)	13 (9.92%)	0 0.00%	181 (10.98%)
Others Offenses	21 (1.45%)	1 (1.49%)	0 0.00%	0 0.00%	22 (1.33%)
Total *	1,445 (100.00%)	67 (100.00%)	131 (100.00%)	6 (100.00%)	1,649 (100.00%)



* Juveniles may have multiple offenses