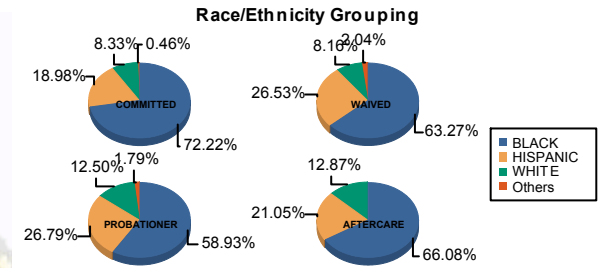




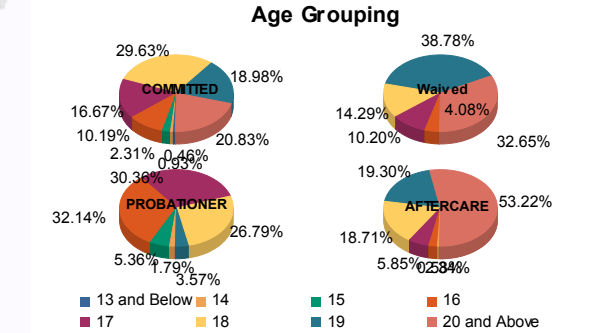
Juvenile Demographics and Statistics

Race/ Ethnicity	COMMITTED		WAIVED		PROBATIONER		AFTERCARE		Total									
	MALE	FEMALE	MALE	FEMALE	MALE	FEMALE	MALE	FEMALE										
BLACK	150	72.82%	6	60.00%	28	60.87%	3	100.00%	31	58.49%	2	66.67%	108	67.08%	5	50.00%	333	67.68%
HISPANIC	40	19.42%	1	10.00%	13	28.26%	0	0.00%	15	28.30%	0	0.00%	34	21.12%	2	20.00%	105	21.34%
WHITE	15	7.28%	3	30.00%	4	8.70%	0	0.00%	6	11.32%	1	33.33%	19	11.80%	3	30.00%	51	10.37%
Others	1	0.49%	0	0.00%	1	2.17%	0	0.00%	1	1.89%	0	0.00%	0	0.00%	0	0.00%	3	0.61%
Total	206	100.00%	10	100.00%	46	100.00%	3	100.00%	53	100.00%	3	100.00%	161	100.00%	10	100.00%	492	100.00%



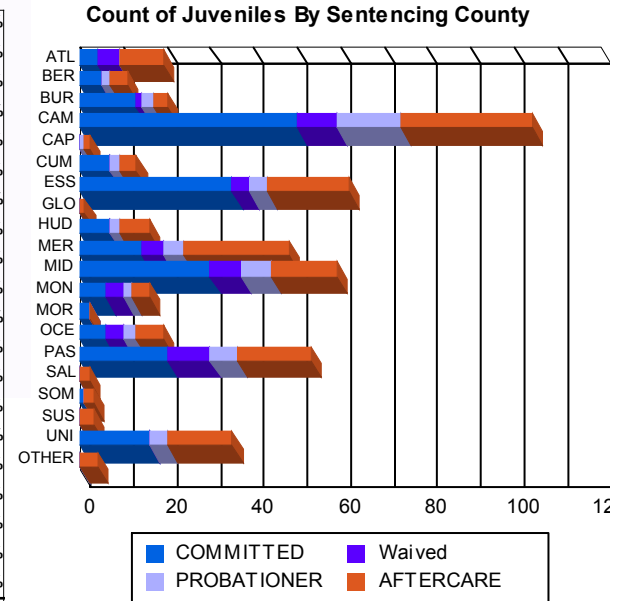
Age

13 and Below	1	0.49%	0	0.00%	0	0.00%	0	0.00%	0	0.00%	0	0.00%	0	0.00%	0	0.00%	1	0.20%
14	2	0.97%	0	0.00%	0	0.00%	0	0.00%	1	1.89%	0	0.00%	1	0.62%	0	0.00%	4	0.81%
15	5	2.43%	0	0.00%	0	0.00%	0	0.00%	3	5.66%	0	0.00%	0	0.00%	0	0.00%	8	1.63%
16	20	9.71%	2	20.00%	2	4.35%	0	0.00%	18	33.96%	0	0.00%	4	2.48%	0	0.00%	46	9.35%
17	35	16.99%	1	10.00%	5	10.87%	0	0.00%	15	28.30%	2	66.67%	9	5.59%	1	10.00%	68	13.82%
18	63	30.58%	1	10.00%	7	15.22%	0	0.00%	15	28.30%	0	0.00%	30	18.63%	2	20.00%	118	23.98%
19	37	17.96%	4	40.00%	18	39.13%	1	33.33%	1	1.89%	1	33.33%	32	19.88%	1	10.00%	95	19.31%
20 and Above	43	20.87%	2	20.00%	14	30.43%	2	66.67%	0	0.00%	0	0.00%	85	52.80%	6	60.00%	152	30.89%
Total	206	100.00%	10	100.00%	46	100.00%	3	100.00%	53	100.00%	3	100.00%	161	100.00%	10	100.00%	492	100.00%
Average Age	18.27		18.60		18.89		19.67		16.81		17.67		20.34		20.20		18.90	



Sentencing County

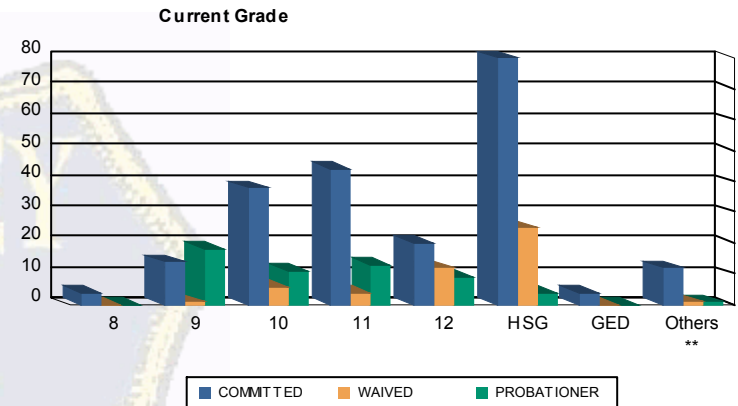
ATL	4	1.94%	0	0.00%	5	10.87%	0	0.00%	0	0.00%	0	0.00%	9	5.59%	1	10.00%	19	3.86%
BER	5	2.43%	0	0.00%	0	0.00%	0	0.00%	2	3.77%	0	0.00%	4	2.48%	0	0.00%	11	2.24%
BUR	11	5.34%	2	20.00%	1	2.17%	0	0.00%	3	5.66%	0	0.00%	3	1.86%	0	0.00%	20	4.07%
CAM	46	22.33%	4	40.00%	6	13.04%	3	100.00%	12	22.64%	3	100.00%	30	18.63%	0	0.00%	104	21.14%
CAP	0	0.00%	0	0.00%	0	0.00%	0	0.00%	1	1.89%	0	0.00%	1	0.62%	0	0.00%	2	0.41%
CUM	7	3.40%	0	0.00%	0	0.00%	0	0.00%	2	3.77%	0	0.00%	4	2.48%	0	0.00%	13	2.64%
ESS	35	16.99%	0	0.00%	4	8.70%	0	0.00%	4	7.55%	0	0.00%	17	10.56%	2	20.00%	62	12.60%
GLO	0	0.00%	0	0.00%	0	0.00%	0	0.00%	0	0.00%	0	0.00%	1	0.62%	0	0.00%	1	0.20%
HUD	7	3.40%	0	0.00%	0	0.00%	0	0.00%	2	3.77%	0	0.00%	7	4.35%	0	0.00%	16	3.25%
MER	14	6.80%	0	0.00%	5	10.87%	0	0.00%	5	9.43%	0	0.00%	21	13.04%	3	30.00%	48	9.76%
MID	27	13.11%	3	30.00%	7	15.22%	0	0.00%	7	13.21%	0	0.00%	14	8.70%	1	10.00%	59	11.99%
MON	6	2.91%	0	0.00%	4	8.70%	0	0.00%	2	3.77%	0	0.00%	4	2.48%	0	0.00%	16	3.25%
MOR	2	0.97%	0	0.00%	0	0.00%	0	0.00%	0	0.00%	0	0.00%	0	0.00%	0	0.00%	2	0.41%
OCE	6	2.91%	0	0.00%	4	8.70%	0	0.00%	3	5.66%	0	0.00%	6	3.73%	0	0.00%	19	3.86%
PAS	20	9.71%	0	0.00%	10	21.74%	0	0.00%	6	11.32%	0	0.00%	16	9.94%	1	10.00%	53	10.77%
SAL	0	0.00%	0	0.00%	0	0.00%	0	0.00%	0	0.00%	0	0.00%	2	1.24%	0	0.00%	2	0.41%
SOM	1	0.49%	0	0.00%	0	0.00%	0	0.00%	0	0.00%	0	0.00%	2	1.24%	0	0.00%	3	0.61%
SUS	0	0.00%	0	0.00%	0	0.00%	0	0.00%	0	0.00%	0	0.00%	2	1.24%	1	10.00%	3	0.61%
UNI	15	7.28%	1	10.00%	0	0.00%	0	0.00%	4	7.55%	0	0.00%	14	8.70%	1	10.00%	35	7.11%
OTHER	0	0.00%	0	0.00%	0	0.00%	0	0.00%	0	0.00%	0	0.00%	4	2.48%	0	0.00%	4	0.81%
Total	206	100.00%	10	100.00%	46	100.00%	3	100.00%	53	100.00%	3	100.00%	161	100.00%	10	100.00%	492	100.00%





Juvenile Demographics and Statistics

Current Grade	COMMITTED		WAIVED		PROBATIONER		Total
	MALE	FEMALE	MALE	FEMALE	MALE	FEMALE	
8	4 (1.94%)	0 (0.00%)	0 (0.00%)	0 (0.00%)	0 (0.00%)	0 (0.00%)	4 (1.25%)
9	13 (6.31%)	1 (10.00%)	1 (2.17%)	0 (0.00%)	17 (32.08%)	1 (33.33%)	33 (10.28%)
10	37 (17.96%)	1 (10.00%)	6 (13.04%)	0 (0.00%)	11 (20.75%)	0 (0.00%)	55 (17.13%)
11	40 (19.42%)	4 (40.00%)	4 (8.70%)	0 (0.00%)	12 (22.64%)	1 (33.33%)	61 (19.00%)
12	20 (9.71%)	0 (0.00%)	11 (23.91%)	1 (33.33%)	9 (16.98%)	0 (0.00%)	41 (12.77%)
HSG	78 (37.86%)	2 (20.00%)	23 (50.00%)	2 (66.67%)	3 (5.66%)	1 (33.33%)	109 (33.96%)
GED	4 (1.94%)	0 (0.00%)	0 (0.00%)	0 (0.00%)	0 (0.00%)	0 (0.00%)	4 (1.25%)
Others **	10 (4.85%)	2 (20.00%)	1 (2.17%)	0 (0.00%)	1 (1.89%)	0 (0.00%)	14 (4.36%)
Total	206 (100.00%)	10 (100.00%)	46 (100.00%)	3 (100.00%)	53 (100.00%)	3 (100.00%)	321 (100.00%)

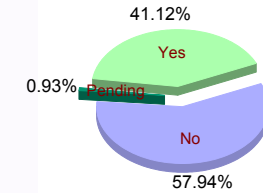


** Includes Aged Out Juveniles and Pending Records

Special Education Services

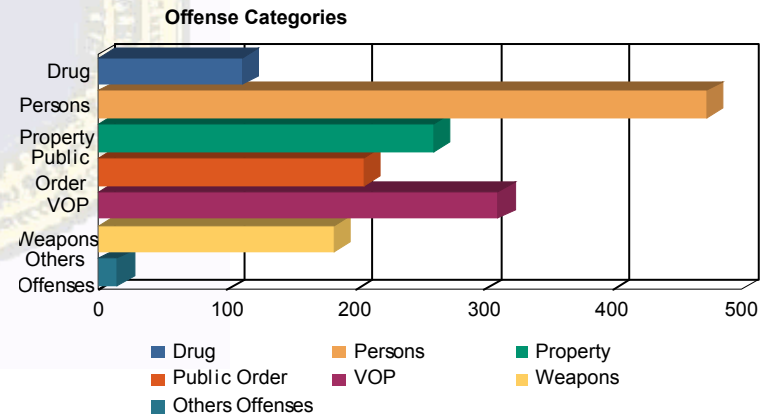
Yes	88 (42.72%)	3 (30.00%)	13 (28.26%)	2 (66.67%)	26 (49.06%)	0 (0.00%)	132 (41.12%)
No	116 (56.31%)	7 (70.00%)	33 (71.74%)	1 (33.33%)	26 (49.06%)	3 (100.00%)	186 (57.94%)
Pending	2 (0.97%)	0 (0.00%)	0 (0.00%)	0 (0.00%)	1 (1.89%)	0 (0.00%)	3 (0.93%)
Total	206 (100.00%)	10 (100.00%)	46 (100.00%)	3 (100.00%)	53 (100.00%)	3 (100.00%)	321 (100.00%)

Special Education



Offense Categories

Drug	84 (6.55%)	6 (10.34%)	5 (6.76%)	1 (7.14%)	16 (13.22%)	0 (0.00%)	112 (7.17%)
Persons	381 (29.72%)	15 (25.86%)	38 (51.35%)	5 (35.71%)	31 (25.62%)	3 (25.00%)	473 (30.30%)
Property	227 (17.71%)	9 (15.52%)	3 (4.05%)	2 (14.29%)	17 (14.05%)	3 (25.00%)	261 (16.72%)
Public Order	170 (13.26%)	11 (18.97%)	7 (9.46%)	2 (14.29%)	15 (12.40%)	1 (8.33%)	206 (13.20%)
VOP	260 (20.28%)	11 (18.97%)	5 (6.76%)	2 (14.29%)	29 (23.97%)	4 (33.33%)	311 (19.92%)
Weapons	147 (11.47%)	5 (8.62%)	16 (21.62%)	1 (7.14%)	13 (10.74%)	1 (8.33%)	183 (11.72%)
Others Offenses	13 (1.01%)	1 (1.72%)	0 (0.00%)	1 (7.14%)	0 (0.00%)	0 (0.00%)	15 (0.96%)
Total *	1,282 (100.00%)	58 (100.00%)	74 (100.00%)	14 (100.00%)	121 (100.00%)	12 (100.00%)	1,561 (100.00%)



* Juveniles may have multiple offenses