



Juvenile Demographics and Statistics

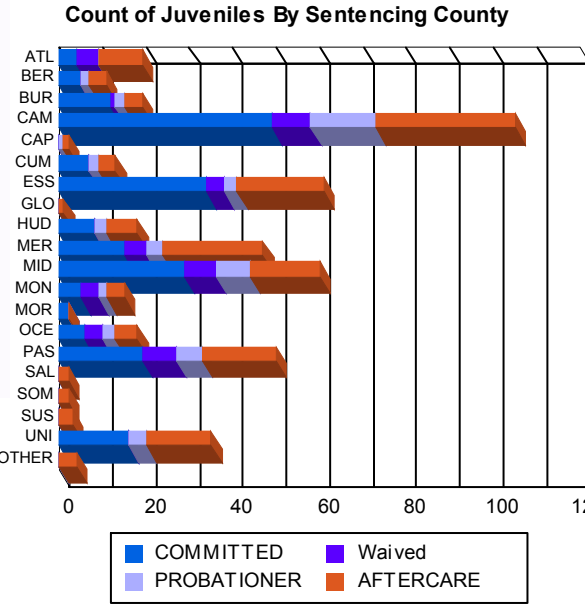
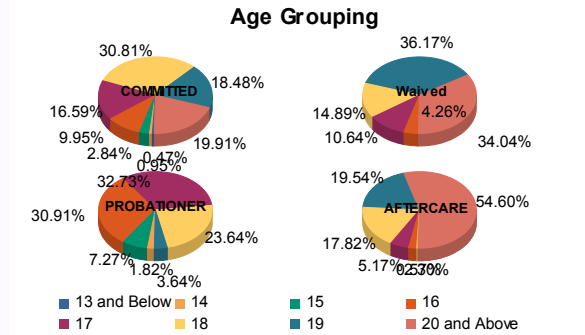
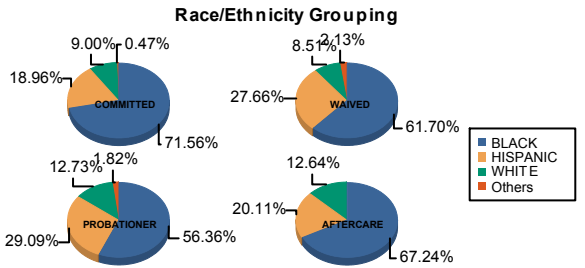
Race/ Ethnicity	COMMITTED		WAIVED		PROBATIONER		AFTERCARE		Total									
	MALE	FEMALE	MALE	FEMALE	MALE	FEMALE	MALE	FEMALE										
BLACK	146	72.28%	5	55.56%	26	59.09%	3	100.00%	29	55.77%	2	66.67%	111	67.68%	6	60.00%	328	67.35%
HISPANIC	39	19.31%	1	11.11%	13	29.55%	0	0.00%	16	30.77%	0	0.00%	34	20.73%	1	10.00%	104	21.36%
WHITE	16	7.92%	3	33.33%	4	9.09%	0	0.00%	6	11.54%	1	33.33%	19	11.59%	3	30.00%	52	10.68%
Others	1	0.50%	0	0.00%	1	2.27%	0	0.00%	1	1.92%	0	0.00%	0	0.00%	0	0.00%	3	0.62%
Total	202	100.00%	9	100.00%	44	100.00%	3	100.00%	52	100.00%	3	100.00%	164	100.00%	10	100.00%	487	100.00%

Age

13 and Below	1	0.50%	0	0.00%	0	0.00%	0	0.00%	0	0.00%	0	0.00%	0	0.00%	0	0.00%	1	0.21%
14	2	0.99%	0	0.00%	0	0.00%	0	0.00%	1	1.92%	0	0.00%	1	0.61%	0	0.00%	4	0.82%
15	6	2.97%	0	0.00%	0	0.00%	0	0.00%	4	7.69%	0	0.00%	0	0.00%	0	0.00%	10	2.05%
16	19	9.41%	2	22.22%	2	4.55%	0	0.00%	17	32.69%	0	0.00%	4	2.44%	0	0.00%	44	9.03%
17	34	16.83%	1	11.11%	5	11.36%	0	0.00%	16	30.77%	2	66.67%	9	5.49%	0	0.00%	67	13.76%
18	65	32.18%	0	0.00%	7	15.91%	0	0.00%	13	25.00%	0	0.00%	28	17.07%	3	30.00%	116	23.82%
19	35	17.33%	4	44.44%	16	36.36%	1	33.33%	1	1.92%	1	33.33%	33	20.12%	1	10.00%	92	18.89%
20 and Above	40	19.80%	2	22.22%	14	31.82%	2	66.67%	0	0.00%	0	0.00%	89	54.27%	6	60.00%	153	31.42%
Total	202	100.00%	9	100.00%	44	100.00%	3	100.00%	52	100.00%	3	100.00%	164	100.00%	10	100.00%	487	100.00%
Average Age	18.21		18.67		18.89		19.67		16.75		17.67		20.38		20.30		18.91	

Sentencing County

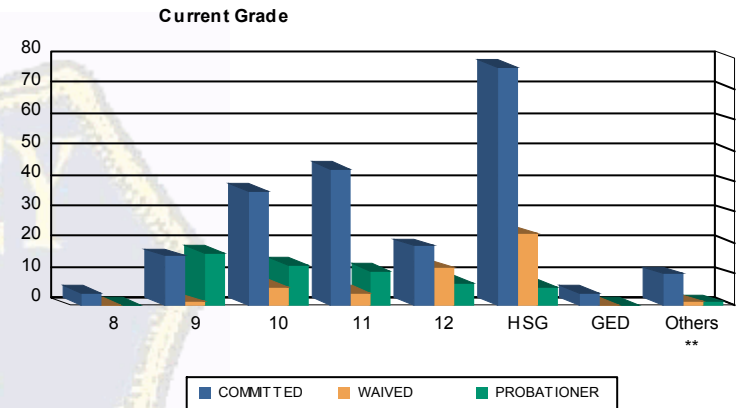
ATL	4	1.98%	0	0.00%	5	11.36%	0	0.00%	0	0.00%	0	0.00%	9	5.49%	1	10.00%	19	3.90%
BER	5	2.48%	0	0.00%	0	0.00%	0	0.00%	2	3.85%	0	0.00%	4	2.44%	0	0.00%	11	2.26%
BUR	11	5.45%	1	11.11%	1	2.27%	0	0.00%	2	3.85%	0	0.00%	3	1.83%	1	10.00%	19	3.90%
CAM	45	22.28%	4	44.44%	6	13.64%	3	100.00%	12	23.08%	3	100.00%	32	19.51%	0	0.00%	105	21.56%
CAP	0	0.00%	0	0.00%	0	0.00%	0	0.00%	1	1.92%	0	0.00%	1	0.61%	0	0.00%	2	0.41%
CUM	7	3.47%	0	0.00%	0	0.00%	0	0.00%	2	3.85%	0	0.00%	4	2.44%	0	0.00%	13	2.67%
ESS	34	16.83%	0	0.00%	4	9.09%	0	0.00%	3	5.77%	0	0.00%	18	10.98%	2	20.00%	61	12.53%
GLO	0	0.00%	0	0.00%	0	0.00%	0	0.00%	0	0.00%	0	0.00%	1	0.61%	0	0.00%	1	0.21%
HUD	8	3.96%	0	0.00%	0	0.00%	0	0.00%	3	5.77%	0	0.00%	7	4.27%	0	0.00%	18	3.70%
MER	15	7.43%	0	0.00%	5	11.36%	0	0.00%	4	7.69%	0	0.00%	21	12.80%	2	20.00%	47	9.65%
MID	26	12.87%	3	33.33%	7	15.91%	0	0.00%	8	15.38%	0	0.00%	15	9.15%	1	10.00%	60	12.32%
MON	5	2.48%	0	0.00%	4	9.09%	0	0.00%	2	3.85%	0	0.00%	4	2.44%	0	0.00%	15	3.08%
MOR	2	0.99%	0	0.00%	0	0.00%	0	0.00%	0	0.00%	0	0.00%	0	0.00%	0	0.00%	2	0.41%
OCE	6	2.97%	0	0.00%	4	9.09%	0	0.00%	3	5.77%	0	0.00%	5	3.05%	0	0.00%	18	3.70%
PAS	19	9.41%	0	0.00%	8	18.18%	0	0.00%	6	11.54%	0	0.00%	16	9.76%	1	10.00%	50	10.27%
SAL	0	0.00%	0	0.00%	0	0.00%	0	0.00%	0	0.00%	0	0.00%	2	1.22%	0	0.00%	2	0.41%
SOM	0	0.00%	0	0.00%	0	0.00%	0	0.00%	0	0.00%	0	0.00%	2	1.22%	0	0.00%	2	0.41%
SUS	0	0.00%	0	0.00%	0	0.00%	0	0.00%	0	0.00%	0	0.00%	2	1.22%	1	10.00%	3	0.62%
UNI	15	7.43%	1	11.11%	0	0.00%	0	0.00%	4	7.69%	0	0.00%	14	8.54%	1	10.00%	35	7.19%
OTHER	0	0.00%	0	0.00%	0	0.00%	0	0.00%	0	0.00%	0	0.00%	4	2.44%	0	0.00%	4	0.82%
Total	202	100.00%	9	100.00%	44	100.00%	3	100.00%	52	100.00%	3	100.00%	164	100.00%	10	100.00%	487	100.00%





Juvenile Demographics and Statistics

Current Grade	COMMITTED		WAIVED		PROBATIONER		Total
	MALE	FEMALE	MALE	FEMALE	MALE	FEMALE	
8	4 (1.98%)	0 0.00%	0 0.00%	0 0.00%	0 0.00%	0 0.00%	4 (1.28%)
9	16 (7.92%)	0 0.00%	1 (2.27%)	0 0.00%	16 (30.77%)	1 (33.33%)	34 (10.86%)
10	35 (17.33%)	2 (22.22%)	6 (13.64%)	0 0.00%	13 (25.00%)	0 0.00%	56 (17.89%)
11	40 (19.80%)	4 (44.44%)	4 (9.09%)	0 0.00%	10 (19.23%)	1 (33.33%)	59 (18.85%)
12	19 (9.41%)	0 0.00%	11 (25.00%)	1 (33.33%)	7 (13.46%)	0 0.00%	38 (12.14%)
HSG	76 (37.62%)	1 (11.11%)	21 (47.73%)	2 (66.67%)	5 (9.62%)	1 (33.33%)	106 (33.87%)
GED	4 (1.98%)	0 0.00%	0 0.00%	0 0.00%	0 0.00%	0 0.00%	4 (1.28%)
Others **	8 (3.96%)	2 (22.22%)	1 (2.27%)	0 0.00%	1 (1.92%)	0 0.00%	12 (3.83%)
Total	202 (100.00%)	9 (100.00%)	44 (100.00%)	3 (100.00%)	52 (100.00%)	3 (100.00%)	313 (100.00%)

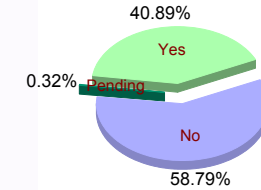


** Includes Aged Out Juveniles and Pending Records

Special Education Services

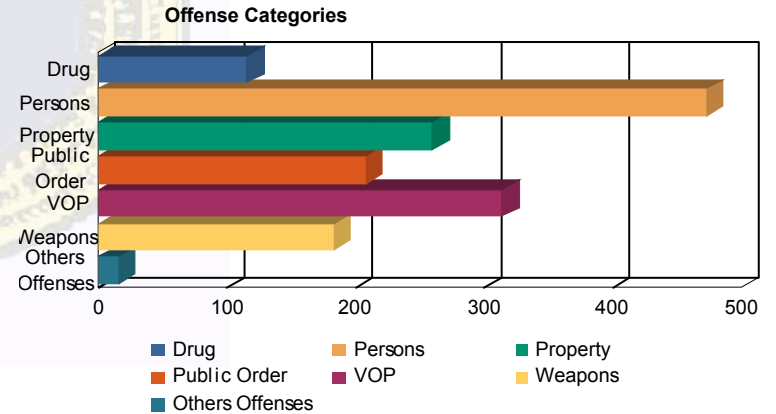
Yes	87 (43.07%)	2 (22.22%)	12 (27.27%)	2 (66.67%)	25 (48.08%)	0 0.00%	128 (40.89%)
No	115 (56.93%)	7 (77.78%)	32 (72.73%)	1 (33.33%)	26 (50.00%)	3 (100.00%)	184 (58.79%)
Pending	0 0.00%	0 0.00%	0 0.00%	0 0.00%	1 (1.92%)	0 0.00%	1 (0.32%)
Total	202 (100.00%)	9 (100.00%)	44 (100.00%)	3 (100.00%)	52 (100.00%)	3 (100.00%)	313 (100.00%)

Special Education



Offense Categories

Drug	86 (6.65%)	6 (10.53%)	5 (6.94%)	1 (7.14%)	18 (14.29%)	0 0.00%	116 (7.39%)
Persons	385 (29.78%)	14 (24.56%)	36 (50.00%)	5 (35.71%)	31 (24.60%)	2 (25.00%)	473 (30.13%)
Property	226 (17.48%)	9 (15.79%)	3 (4.17%)	2 (14.29%)	18 (14.29%)	2 (25.00%)	260 (16.56%)
Public Order	170 (13.15%)	11 (19.30%)	7 (9.72%)	2 (14.29%)	17 (13.49%)	1 (12.50%)	208 (13.25%)
VOP	264 (20.42%)	11 (19.30%)	5 (6.94%)	2 (14.29%)	29 (23.02%)	3 (37.50%)	314 (20.00%)
Weapons	149 (11.52%)	5 (8.77%)	16 (22.22%)	1 (7.14%)	12 (9.52%)	0 0.00%	183 (11.66%)
Others Offenses	13 (1.01%)	1 (1.75%)	0 0.00%	1 (7.14%)	1 (0.79%)	0 0.00%	16 (1.02%)
Total *	1,293 (100.00%)	57 (100.00%)	72 (100.00%)	14 (100.00%)	126 (100.00%)	8 (100.00%)	1,570 (100.00%)



* Juveniles may have multiple offenses