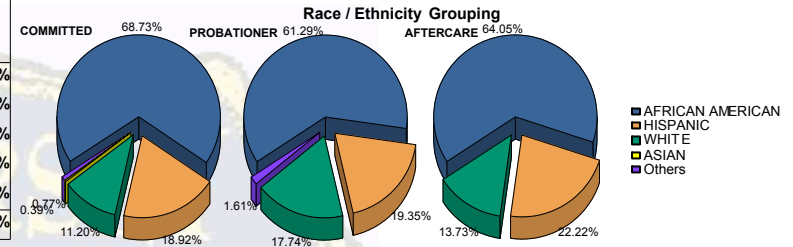


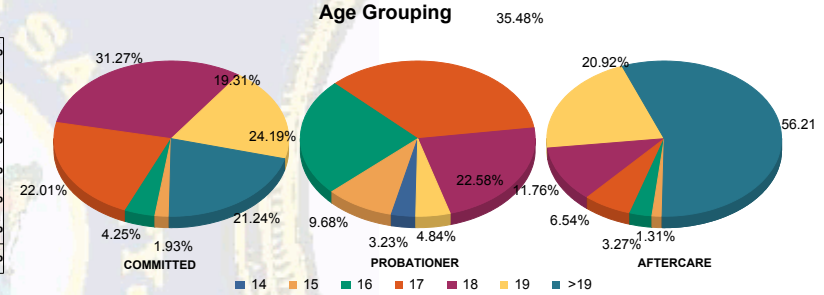


Juvenile Demographics and Statistics

Race/Ethnicity	COMMITTED		PROBATIONER		AFTERCARE		Total							
	MALE	FEMALE	MALE	FEMALE	MALE	FEMALE								
AFRICAN AMERICAN	173	69.76%	5	45.45%	36	63.16%	2	40.00%	92	65.71%	6	46.15%	314	66.24%
HISPANIC	48	19.35%	1	9.09%	11	19.30%	1	20.00%	32	22.86%	2	15.38%	95	20.04%
WHITE	24	9.68%	5	45.45%	9	15.79%	2	40.00%	16	11.43%	5	38.46%	61	12.87%
ASIAN	1	0.40%	0	0.00%	0	0.00%	0	0.00%	0	0.00%	0	0.00%	1	0.21%
Others	2	0.81%	0	0.00%	1	1.75%	0	0.00%	0	0.00%	0	0.00%	3	0.63%
<b>Total</b>	<b>248</b>	<b>100.00%</b>	<b>11</b>	<b>100.00%</b>	<b>57</b>	<b>100.00%</b>	<b>5</b>	<b>100.00%</b>	<b>140</b>	<b>100.00%</b>	<b>13</b>	<b>100.00%</b>	<b>474</b>	<b>100.00%</b>



Age	COMMITTED	PROBATIONER	AFTERCARE	Total
14	0	0	2	2
15	5	0	1	6
16	10	1	0	11
17	54	3	2	59
18	78	3	2	83
19	48	2	3	53
>19	53	2	0	55
<b>Total</b>	<b>248</b>	<b>11</b>	<b>57</b>	<b>474</b>

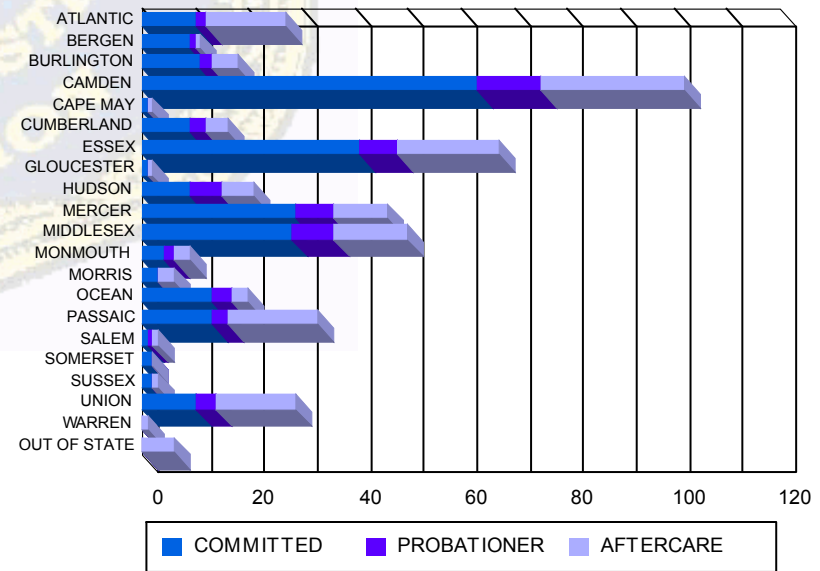


Average Age	COMMITTED	PROBATIONER	AFTERCARE	Total
Average Age	18.43	18.27	16.77	17.00
	20.38	19.08	18.80	

**Sentencing County**

County	COMMITTED	PROBATIONER	AFTERCARE	Total
ATLANTIC	10	0	2	12
BERGEN	9	0	1	10
BURLINGTON	9	2	2	13
CAMDEN	59	4	10	73
CAPE MAY	1	0	0	1
CUMBERLAND	9	0	3	12
ESSEX	40	1	7	48
GLOUCESTER	1	0	0	1
HUDSON	9	0	6	15
MERCER	28	1	6	35
MIDDLESEX	26	2	8	36
MONMOUTH	4	0	2	6
MORRIS	3	0	0	3
OCEAN	13	0	2	15
PASSAIC	13	0	3	16
SALEM	1	0	1	2
SOMERSET	2	0	0	2
SUSSEX	1	1	0	2
UNION	10	0	4	14
WARREN	0	0	0	0
OUT OF STATE	0	0	0	0
<b>Total</b>	<b>248</b>	<b>11</b>	<b>57</b>	<b>474</b>

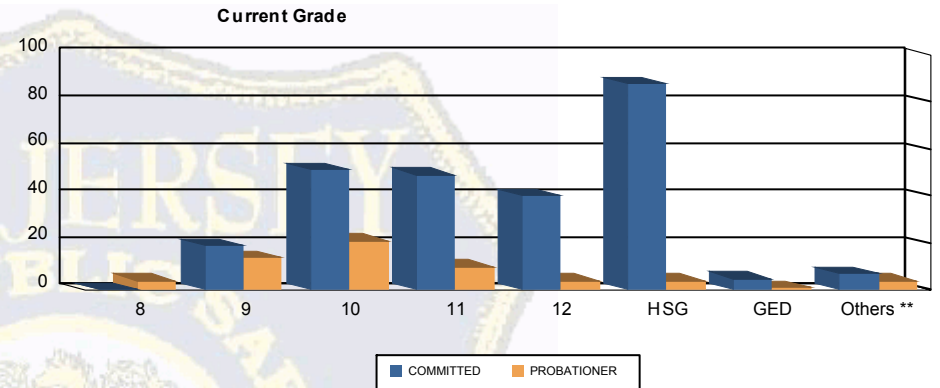
**Count of Juveniles By Sentencing County**





Juvenile Demographics and Statistics

Current Grade	COMMITTED		PROBATIONER		Total	
	MALE	FEMALE	MALE	FEMALE		
8	0 (0.00%)	0 (0.00%)	4 (7.02%)	0 (0.00%)	4 (1.25%)	
9	18 (7.26%)	1 (9.09%)	13 (22.81%)	1 (20.00%)	33 (10.28%)	
10	44 (17.74%)	7 (63.64%)	20 (35.09%)	1 (20.00%)	72 (22.43%)	
11	49 (19.76%)	0 (0.00%)	9 (15.79%)	1 (20.00%)	59 (18.38%)	
12	40 (16.13%)	0 (0.00%)	4 (7.02%)	0 (0.00%)	44 (13.71%)	
HSG	86 (34.68%)	2 (18.18%)	3 (5.26%)	1 (20.00%)	92 (28.66%)	
GED	5 (2.02%)	0 (0.00%)	0 (0.00%)	1 (20.00%)	6 (1.87%)	
Others **	6 (2.42%)	1 (9.09%)	4 (7.02%)	0 (0.00%)	11 (3.43%)	
<b>Total</b>	<b>248 (100.00%)</b>	<b>11 (100.00%)</b>	<b>57 (100.00%)</b>	<b>5 (100.00%)</b>	<b>321 (100.00%)</b>	

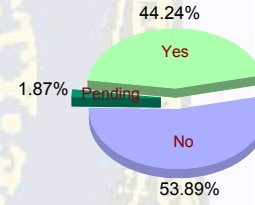


\*\* Includes Aged Out Juveniles and Pending Records

**Special Education Services**

Yes	109 (43.95%)	5 (45.45%)	25 (43.86%)	3 (60.00%)	142 (44.24%)
No	135 (54.44%)	6 (54.55%)	30 (52.63%)	2 (40.00%)	173 (53.89%)
Pending	4 (1.61%)	0 (0.00%)	2 (3.51%)	0 (0.00%)	6 (1.87%)
<b>Total</b>	<b>248 (100.00%)</b>	<b>11 (100.00%)</b>	<b>57 (100.00%)</b>	<b>5 (100.00%)</b>	<b>321 (100.00%)</b>

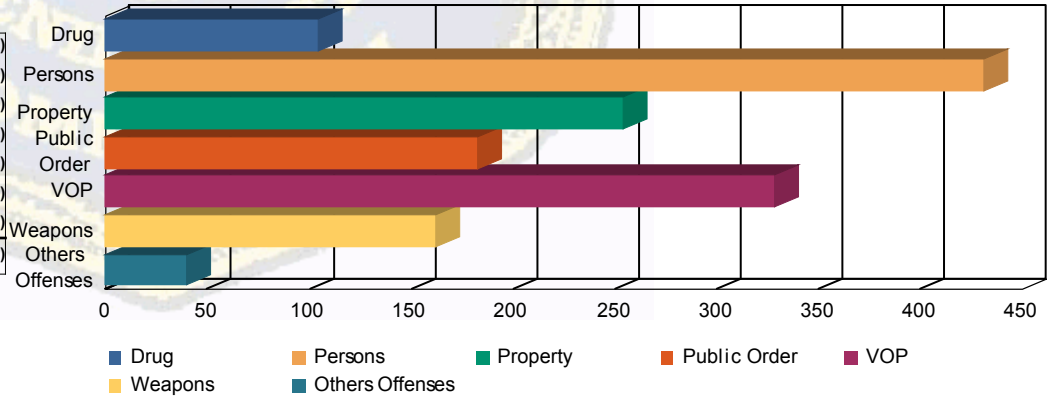
**Special Education**



**Offense Categories**

Drug	81 (6.44%)	6 (8.70%)	16 (9.52%)	1 (12.50%)	104 (6.92%)
Persons	372 (29.59%)	15 (21.74%)	43 (25.60%)	1 (12.50%)	431 (28.70%)
Property	224 (17.82%)	9 (13.04%)	21 (12.50%)	0 (0.00%)	254 (16.91%)
Public Order	155 (12.33%)	14 (20.29%)	13 (7.74%)	1 (12.50%)	183 (12.18%)
VOP	259 (20.60%)	15 (21.74%)	49 (29.17%)	5 (62.50%)	328 (21.84%)
Weapons	138 (10.98%)	8 (11.59%)	16 (9.52%)	0 (0.00%)	162 (10.79%)
Others Offenses	28 (2.23%)	2 (2.90%)	10 (5.95%)	0 (0.00%)	40 (2.66%)
<b>Total *</b>	<b>1,257 (100.00%)</b>	<b>69 (100.00%)</b>	<b>168 (100.00%)</b>	<b>8 (100.00%)</b>	<b>1,502 (100.00%)</b>

**Offense Categories**



\* Juveniles may have multiple offenses