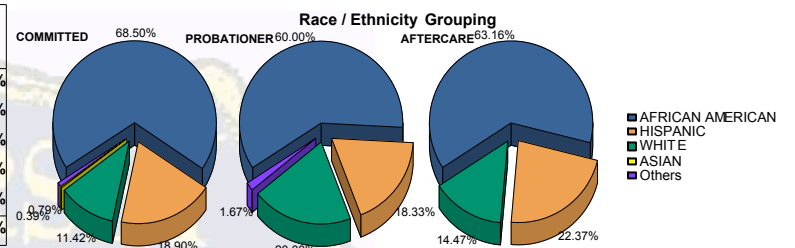


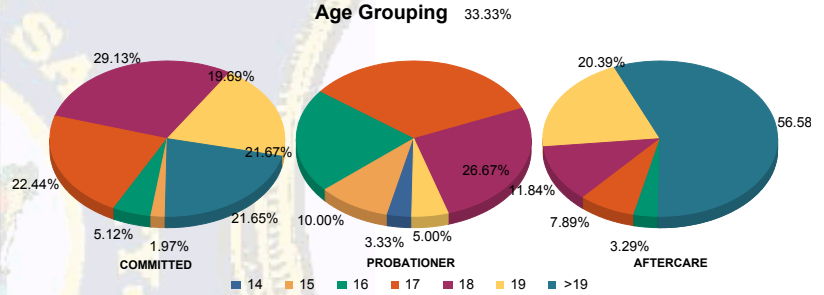


Juvenile Demographics and Statistics

Race/Ethnicity	COMMITTED		PROBATIONER		AFTERCARE		Total							
	MALE	FEMALE	MALE	FEMALE	MALE	FEMALE								
AFRICAN AMERICAN	169	69.55%	5	45.45%	34	61.82%	2	40.00%	90	64.75%	6	46.15%	306	65.67%
HISPANIC	47	19.34%	1	9.09%	10	18.18%	1	20.00%	32	23.02%	2	15.38%	93	19.96%
WHITE	24	9.88%	5	45.45%	10	18.18%	2	40.00%	17	12.23%	5	38.46%	63	13.52%
ASIAN	1	0.41%	0	0.00%	0	0.00%	0	0.00%	0	0.00%	0	0.00%	1	0.21%
Others	2	0.82%	0	0.00%	1	1.82%	0	0.00%	0	0.00%	0	0.00%	3	0.64%
<b>Total</b>	<b>243</b>	<b>100.00%</b>	<b>11</b>	<b>100.00%</b>	<b>55</b>	<b>100.00%</b>	<b>5</b>	<b>100.00%</b>	<b>139</b>	<b>100.00%</b>	<b>13</b>	<b>100.00%</b>	<b>466</b>	<b>100.00%</b>



Age	COMMITTED	PROBATIONER	AFTERCARE	Total
14	0	0	2	2
15	5	0	0	5
16	12	1	0	13
17	54	3	18	75
18	72	2	14	88
19	48	2	3	53
>19	52	3	0	55
<b>Total</b>	<b>243</b>	<b>11</b>	<b>55</b>	<b>466</b>

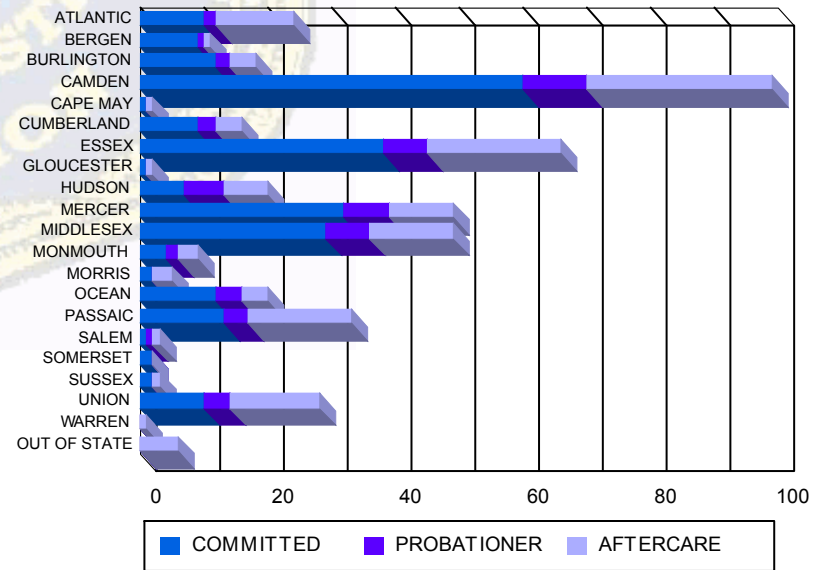


Average Age	COMMITTED	PROBATIONER	AFTERCARE	Total
Average Age	18.37	18.45	16.84	18.83

**Sentencing County**

Sentencing County	COMMITTED	PROBATIONER	AFTERCARE	Total
ATLANTIC	10	0	2	12
BERGEN	9	0	1	10
BURLINGTON	10	2	2	14
CAMDEN	56	4	8	68
CAPE MAY	1	0	0	1
CUMBERLAND	9	0	3	12
ESSEX	37	1	7	45
GLOUCESTER	1	0	0	1
HUDSON	7	0	6	13
MERCER	31	1	6	38
MIDDLESEX	27	2	7	36
MONMOUTH	4	0	2	6
MORRIS	2	0	0	2
OCEAN	12	0	2	14
PASSAIC	13	0	4	17
SALEM	1	0	1	2
SOMERSET	2	0	0	2
SUSSEX	1	1	0	2
UNION	10	0	4	14
WARREN	0	0	0	0
OUT OF STATE	0	0	0	0
<b>Total</b>	<b>243</b>	<b>11</b>	<b>55</b>	<b>466</b>

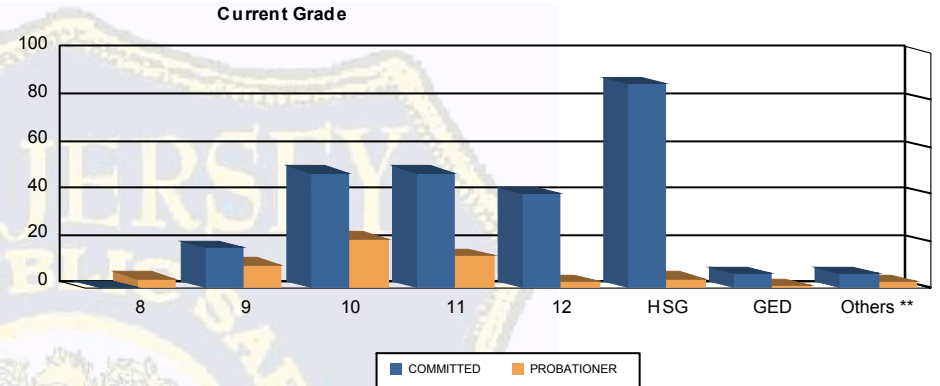
**Count of Juveniles By Sentencing County**





Juvenile Demographics and Statistics

Current Grade	COMMITTED		PROBATIONER		Total	
	MALE	FEMALE	MALE	FEMALE		
8	0 (0.00%)	0 (0.00%)	4 (7.27%)	0 (0.00%)	4 (1.27%)	
9	16 (6.58%)	1 (9.09%)	9 (16.36%)	1 (20.00%)	27 (8.60%)	
10	42 (17.28%)	7 (63.64%)	20 (36.36%)	1 (20.00%)	70 (22.29%)	
11	49 (20.16%)	0 (0.00%)	13 (23.64%)	1 (20.00%)	63 (20.06%)	
12	40 (16.46%)	0 (0.00%)	3 (5.45%)	0 (0.00%)	43 (13.69%)	
HSG	85 (34.98%)	2 (18.18%)	3 (5.45%)	1 (20.00%)	91 (28.98%)	
GED	6 (2.47%)	0 (0.00%)	0 (0.00%)	1 (20.00%)	7 (2.23%)	
Others **	5 (2.06%)	1 (9.09%)	3 (5.45%)	0 (0.00%)	9 (2.87%)	
<b>Total</b>	<b>243 (100.00%)</b>	<b>11 (100.00%)</b>	<b>55 (100.00%)</b>	<b>5 (100.00%)</b>	<b>314 (100.00%)</b>	

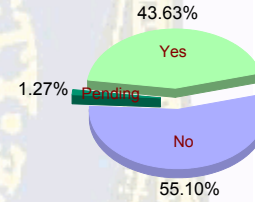


\*\* Includes Aged Out Juveniles and Pending Records

**Special Education Services**

Yes	104 (42.80%)	5 (45.45%)	25 (45.45%)	3 (60.00%)	137 (43.63%)
No	136 (55.97%)	6 (54.55%)	29 (52.73%)	2 (40.00%)	173 (55.10%)
Pending	3 (1.23%)	0 (0.00%)	1 (1.82%)	0 (0.00%)	4 (1.27%)
<b>Total</b>	<b>243 (100.00%)</b>	<b>11 (100.00%)</b>	<b>55 (100.00%)</b>	<b>5 (100.00%)</b>	<b>314 (100.00%)</b>

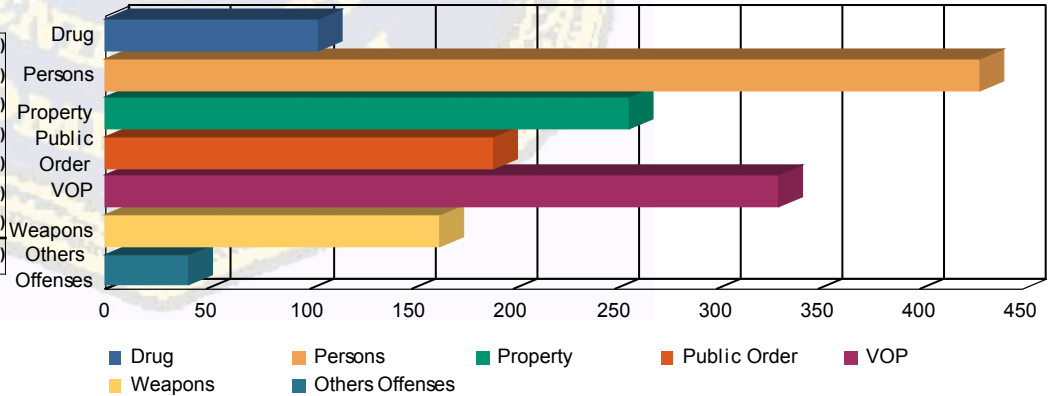
**Special Education**



**Offense Categories**

Drug	82 (6.49%)	6 (8.70%)	15 (8.62%)	1 (12.50%)	104 (6.86%)
Persons	369 (29.19%)	15 (21.74%)	44 (25.29%)	1 (12.50%)	429 (28.32%)
Property	225 (17.80%)	9 (13.04%)	23 (13.22%)	0 (0.00%)	257 (16.96%)
Public Order	160 (12.66%)	14 (20.29%)	15 (8.62%)	1 (12.50%)	190 (12.54%)
VOP	260 (20.57%)	15 (21.74%)	50 (28.74%)	5 (62.50%)	330 (21.78%)
Weapons	138 (10.92%)	8 (11.59%)	18 (10.34%)	0 (0.00%)	164 (10.83%)
Others Offenses	30 (2.37%)	2 (2.90%)	9 (5.17%)	0 (0.00%)	41 (2.71%)
<b>Total *</b>	<b>1,264 (100.00%)</b>	<b>69 (100.00%)</b>	<b>174 (100.00%)</b>	<b>8 (100.00%)</b>	<b>1,515 (100.00%)</b>

**Offense Categories**



\* Juveniles may have multiple offenses