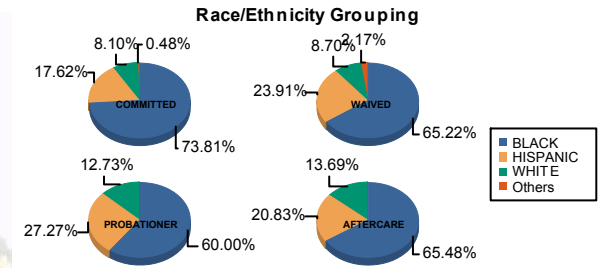




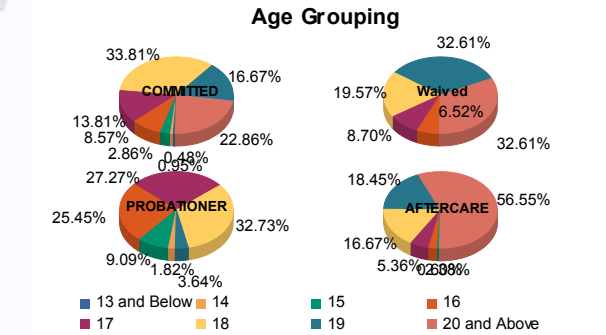
Juvenile Demographics and Statistics

Race/ Ethnicity	COMMITTED		WAIVED		PROBATIONER		AFTERCARE		Total									
	MALE	FEMALE	MALE	FEMALE	MALE	FEMALE	MALE	FEMALE										
BLACK	149	74.13%	6	66.67%	27	62.79%	3	100.00%	32	60.38%	1	50.00%	106	66.67%	4	44.44%	328	68.48%
HISPANIC	36	17.91%	1	11.11%	11	25.58%	0	0.00%	15	28.30%	0	0.00%	34	21.38%	1	11.11%	98	20.46%
WHITE	15	7.46%	2	22.22%	4	9.30%	0	0.00%	6	11.32%	1	50.00%	19	11.95%	4	44.44%	51	10.65%
Others	1	0.50%	0	0.00%	1	2.33%	0	0.00%	0	0.00%	0	0.00%	0	0.00%	0	0.00%	2	0.42%
Total	201	100.00%	9	100.00%	43	100.00%	3	100.00%	53	100.00%	2	100.00%	159	100.00%	9	100.00%	479	100.00%



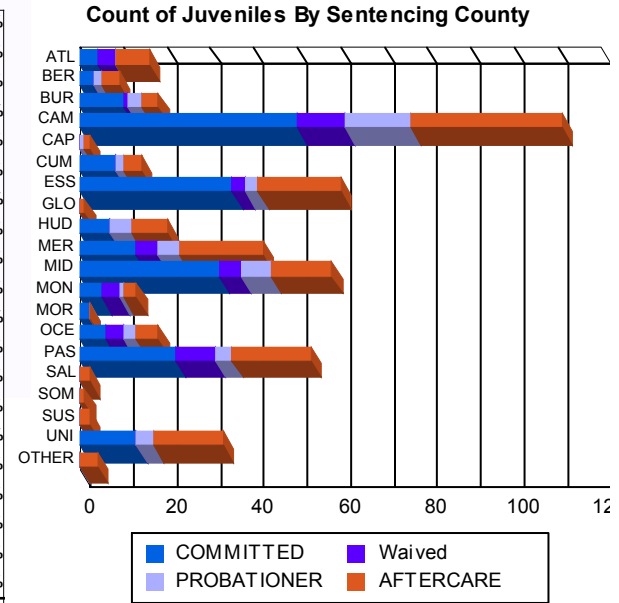
Age

13 and Below	1	0.50%	0	0.00%	0	0.00%	0	0.00%	0	0.00%	0	0.00%	0	0.00%	0	0.00%	1	0.21%
14	2	1.00%	0	0.00%	0	0.00%	0	0.00%	1	1.89%	0	0.00%	0	0.00%	0	0.00%	3	0.63%
15	6	2.99%	0	0.00%	0	0.00%	0	0.00%	5	9.43%	0	0.00%	1	0.63%	0	0.00%	12	2.51%
16	16	7.96%	2	22.22%	3	6.98%	0	0.00%	14	26.42%	0	0.00%	4	2.52%	0	0.00%	39	8.14%
17	26	12.94%	3	33.33%	4	9.30%	0	0.00%	14	26.42%	1	50.00%	9	5.66%	0	0.00%	57	11.90%
18	71	35.32%	0	0.00%	9	20.93%	0	0.00%	18	33.96%	0	0.00%	26	16.35%	2	22.22%	126	26.30%
19	32	15.92%	3	33.33%	14	32.56%	1	33.33%	1	1.89%	1	50.00%	31	19.50%	0	0.00%	83	17.33%
20 and Above	47	23.38%	1	11.11%	13	30.23%	2	66.67%	0	0.00%	0	0.00%	88	55.35%	7	77.78%	158	32.99%
Total	201	100.00%	9	100.00%	43	100.00%	3	100.00%	53	100.00%	2	100.00%	159	100.00%	9	100.00%	479	100.00%
Average Age	18.36		17.78		18.79		19.67		16.87		18.00		20.49		21.11		18.99	



Sentencing County

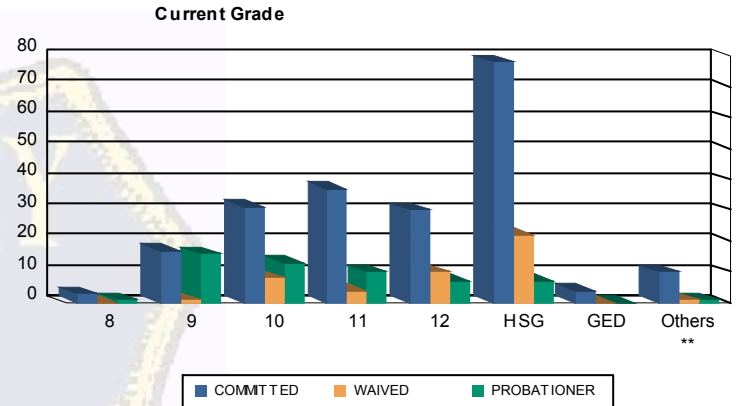
ATL	4	1.99%	0	0.00%	4	9.30%	0	0.00%	0	0.00%	0	0.00%	7	4.40%	1	11.11%	16	3.34%
BER	3	1.49%	0	0.00%	0	0.00%	0	0.00%	2	3.77%	0	0.00%	4	2.52%	0	0.00%	9	1.88%
BUR	9	4.48%	1	11.11%	1	2.33%	0	0.00%	3	5.66%	0	0.00%	3	1.89%	1	11.11%	18	3.76%
CAM	48	23.88%	2	22.22%	8	18.60%	3	100.00%	13	24.53%	2	100.00%	33	20.75%	2	22.22%	111	23.17%
CAP	0	0.00%	0	0.00%	0	0.00%	0	0.00%	1	1.89%	0	0.00%	1	0.63%	0	0.00%	2	0.42%
CUM	8	3.98%	0	0.00%	0	0.00%	0	0.00%	2	3.77%	0	0.00%	4	2.52%	0	0.00%	14	2.92%
ESS	35	17.41%	0	0.00%	3	6.98%	0	0.00%	3	5.66%	0	0.00%	17	10.69%	2	22.22%	60	12.53%
GLO	0	0.00%	0	0.00%	0	0.00%	0	0.00%	0	0.00%	0	0.00%	1	0.63%	0	0.00%	1	0.21%
HUD	7	3.48%	0	0.00%	0	0.00%	0	0.00%	5	9.43%	0	0.00%	8	5.03%	0	0.00%	20	4.18%
MER	13	6.47%	0	0.00%	5	11.63%	0	0.00%	5	9.43%	0	0.00%	19	11.95%	0	0.00%	42	8.77%
MID	28	13.93%	4	44.44%	5	11.63%	0	0.00%	7	13.21%	0	0.00%	14	8.81%	0	0.00%	58	12.11%
MON	5	2.49%	0	0.00%	4	9.30%	0	0.00%	1	1.89%	0	0.00%	3	1.89%	0	0.00%	13	2.71%
MOR	2	1.00%	0	0.00%	0	0.00%	0	0.00%	0	0.00%	0	0.00%	0	0.00%	0	0.00%	2	0.42%
OCE	6	2.99%	0	0.00%	4	9.30%	0	0.00%	3	5.66%	0	0.00%	5	3.14%	0	0.00%	18	3.76%
PAS	21	10.45%	1	11.11%	9	20.93%	0	0.00%	4	7.55%	0	0.00%	17	10.69%	1	11.11%	53	11.06%
SAL	0	0.00%	0	0.00%	0	0.00%	0	0.00%	0	0.00%	0	0.00%	2	1.26%	0	0.00%	2	0.42%
SOM	0	0.00%	0	0.00%	0	0.00%	0	0.00%	0	0.00%	0	0.00%	1	0.63%	0	0.00%	1	0.21%
SUS	0	0.00%	0	0.00%	0	0.00%	0	0.00%	0	0.00%	0	0.00%	1	0.63%	1	11.11%	2	0.42%
UNI	12	5.97%	1	11.11%	0	0.00%	0	0.00%	4	7.55%	0	0.00%	15	9.43%	1	11.11%	33	6.89%
OTHER	0	0.00%	0	0.00%	0	0.00%	0	0.00%	0	0.00%	0	0.00%	4	2.52%	0	0.00%	4	0.84%
Total	201	100.00%	9	100.00%	43	100.00%	3	100.00%	53	100.00%	2	100.00%	159	100.00%	9	100.00%	479	100.00%





Juvenile Demographics and Statistics

Current Grade	COMMITTED		WAIVED		PROBATIONER		Total
	MALE	FEMALE	MALE	FEMALE	MALE	FEMALE	
8	3 (1.49%)	0 (0.00%)	0 (0.00%)	0 (0.00%)	1 (1.89%)	0 (0.00%)	4 (1.29%)
9	15 (7.46%)	2 (22.22%)	1 (2.33%)	0 (0.00%)	15 (28.30%)	1 (50.00%)	34 (10.93%)
10	29 (14.43%)	2 (22.22%)	8 (18.60%)	0 (0.00%)	13 (24.53%)	0 (0.00%)	52 (16.72%)
11	34 (16.92%)	3 (33.33%)	4 (9.30%)	0 (0.00%)	10 (18.87%)	0 (0.00%)	51 (16.40%)
12	30 (14.93%)	0 (0.00%)	9 (20.93%)	1 (33.33%)	7 (13.21%)	0 (0.00%)	47 (15.11%)
HSG	76 (37.81%)	2 (22.22%)	20 (46.51%)	2 (66.67%)	6 (11.32%)	1 (50.00%)	107 (34.41%)
GED	4 (1.99%)	0 (0.00%)	0 (0.00%)	0 (0.00%)	0 (0.00%)	0 (0.00%)	4 (1.29%)
Others **	10 (4.98%)	0 (0.00%)	1 (2.33%)	0 (0.00%)	1 (1.89%)	0 (0.00%)	12 (3.86%)
Total	201 (100.00%)	9 (100.00%)	43 (100.00%)	3 (100.00%)	53 (100.00%)	2 (100.00%)	311 (100.00%)

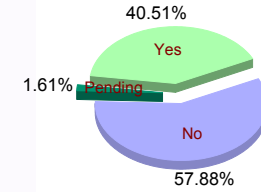


** Includes Aged Out Juveniles and Pending Records

Special Education Services

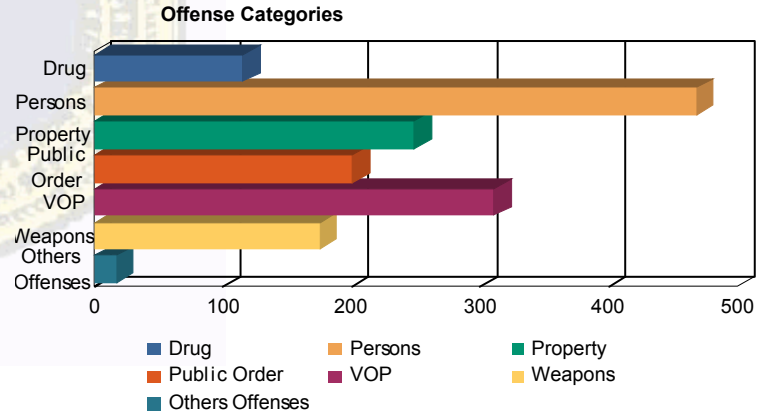
Yes	83 (41.29%)	2 (22.22%)	13 (30.23%)	2 (66.67%)	26 (49.06%)	0 (0.00%)	126 (40.51%)
No	115 (57.21%)	7 (77.78%)	29 (67.44%)	1 (33.33%)	26 (49.06%)	2 (100.00%)	180 (57.88%)
Pending	3 (1.49%)	0 (0.00%)	1 (2.33%)	0 (0.00%)	1 (1.89%)	0 (0.00%)	5 (1.61%)
Total	201 (100.00%)	9 (100.00%)	43 (100.00%)	3 (100.00%)	53 (100.00%)	2 (100.00%)	311 (100.00%)

Special Education



Offense Categories

Drug	90 (7.12%)	6 (10.91%)	5 (6.76%)	1 (7.14%)	14 (11.11%)	0 (0.00%)	116 (7.55%)
Persons	379 (29.98%)	14 (25.45%)	37 (50.00%)	5 (35.71%)	32 (25.40%)	1 (25.00%)	468 (30.45%)
Property	219 (17.33%)	9 (16.36%)	3 (4.05%)	2 (14.29%)	15 (11.90%)	1 (25.00%)	249 (16.20%)
Public Order	165 (13.05%)	9 (16.36%)	8 (10.81%)	2 (14.29%)	17 (13.49%)	0 (0.00%)	201 (13.08%)
VOP	260 (20.57%)	11 (20.00%)	4 (5.41%)	2 (14.29%)	32 (25.40%)	2 (50.00%)	311 (20.23%)
Weapons	138 (10.92%)	5 (9.09%)	17 (22.97%)	1 (7.14%)	14 (11.11%)	0 (0.00%)	175 (11.39%)
Others Offenses	13 (1.03%)	1 (1.82%)	0 (0.00%)	1 (7.14%)	2 (1.59%)	0 (0.00%)	17 (1.11%)
Total *	1,264 (100.00%)	55 (100.00%)	74 (100.00%)	14 (100.00%)	126 (100.00%)	4 (100.00%)	1,537 (100.00%)



* Juveniles may have multiple offenses