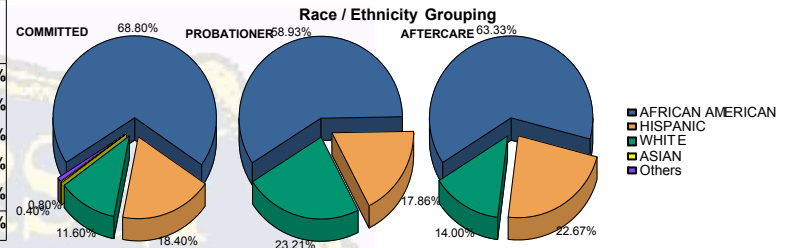




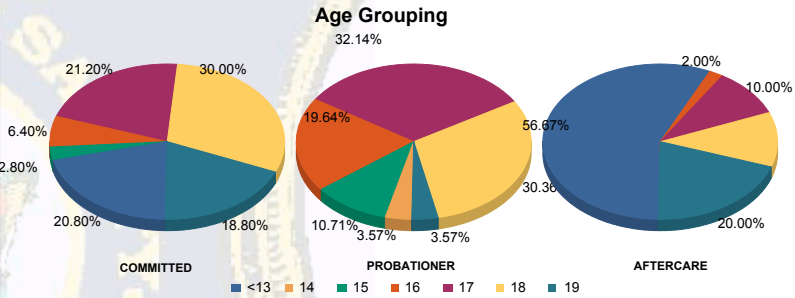
Juvenile Demographics and Statistics

Race/Ethnicity	COMMITTED		PROBATIONER		AFTERCARE		Total							
	MALE	FEMALE	MALE	FEMALE	MALE	FEMALE								
AFRICAN AMERICAN	167	70.17%	5	41.67%	31	60.78%	2	40.00%	90	64.75%	5	45.45%	300	65.79%
HISPANIC	44	18.49%	2	16.67%	9	17.65%	1	20.00%	32	23.02%	2	18.18%	90	19.74%
WHITE	24	10.08%	5	41.67%	11	21.57%	2	40.00%	17	12.23%	4	36.36%	63	13.82%
ASIAN	1	0.42%	0	0.00%	0	0.00%	0	0.00%	0	0.00%	0	0.00%	1	0.22%
Others	2	0.84%	0	0.00%	0	0.00%	0	0.00%	0	0.00%	0	0.00%	2	0.44%
Total	238	100.00%	12	100.00%	51	100.00%	5	100.00%	139	100.00%	11	100.00%	456	100.00%



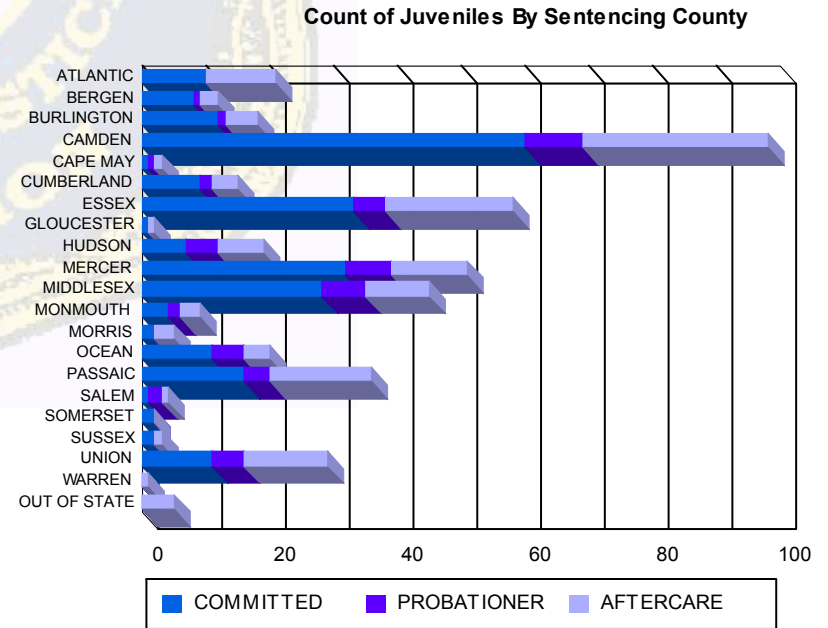
Age

<13	1	0.42%	0	0.00%	0	0.00%	0	0.00%	0	0.00%	0	0.00%	1	0.22%
14	0	0.00%	0	0.00%	2	3.92%	0	0.00%	0	0.00%	0	0.00%	2	0.44%
15	7	2.94%	0	0.00%	5	9.80%	1	20.00%	0	0.00%	0	0.00%	13	2.85%
16	15	6.30%	1	8.33%	11	21.57%	0	0.00%	3	2.16%	0	0.00%	30	6.58%
17	49	20.59%	4	33.33%	16	31.37%	2	40.00%	13	9.35%	2	18.18%	86	18.86%
18	73	30.67%	2	16.67%	15	29.41%	2	40.00%	15	10.79%	2	18.18%	109	23.90%
19	45	18.91%	2	16.67%	2	3.92%	0	0.00%	27	19.42%	3	27.27%	79	17.32%
>19	48	20.17%	3	25.00%	0	0.00%	0	0.00%	81	58.27%	4	36.36%	136	29.82%
Total	238	100.00%	12	100.00%	51	100.00%	5	100.00%	139	100.00%	11	100.00%	456	100.00%
Average Age	18.29		18.33		16.84		17.00		20.54		19.27		18.82	



Sentencing County

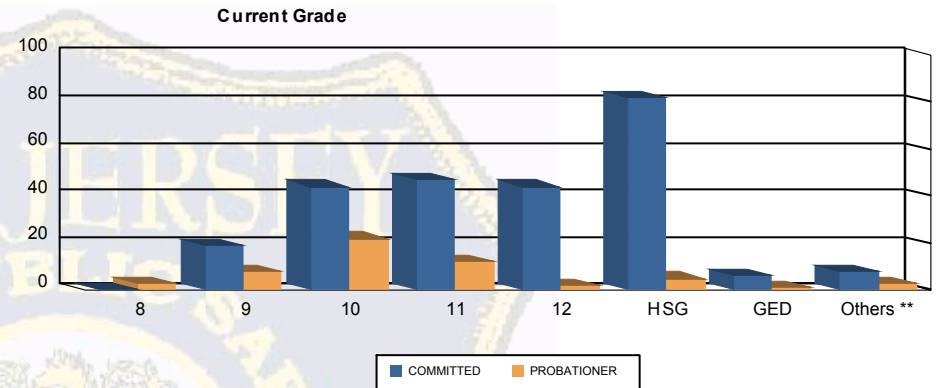
ATLANTIC	10	4.20%	0	0.00%	0	0.00%	0	0.00%	10	7.19%	1	9.09%	21	4.61%
BERGEN	8	3.36%	0	0.00%	1	1.96%	0	0.00%	3	2.16%	0	0.00%	12	2.63%
BURLINGTON	10	4.20%	2	16.67%	1	1.96%	0	0.00%	4	2.88%	1	9.09%	18	3.95%
CAMDEN	56	23.53%	4	33.33%	7	13.73%	2	40.00%	25	17.99%	4	36.36%	98	21.49%
CAPE MAY	1	0.42%	0	0.00%	1	1.96%	0	0.00%	1	0.72%	0	0.00%	3	0.66%
CUMBERLAND	9	3.78%	0	0.00%	2	3.92%	0	0.00%	4	2.88%	0	0.00%	15	3.29%
ESSEX	32	13.45%	1	8.33%	5	9.80%	0	0.00%	20	14.39%	0	0.00%	58	12.72%
GLOUCESTER	1	0.42%	0	0.00%	0	0.00%	0	0.00%	1	0.72%	0	0.00%	2	0.44%
HUDSON	7	2.94%	0	0.00%	5	9.80%	0	0.00%	7	5.04%	0	0.00%	19	4.17%
MERCER	30	12.61%	2	16.67%	6	11.76%	1	20.00%	10	7.19%	2	18.18%	51	11.18%
MIDDLESEX	26	10.92%	2	16.67%	7	13.73%	0	0.00%	10	7.19%	0	0.00%	45	9.87%
MONMOUTH	4	1.68%	0	0.00%	2	3.92%	0	0.00%	3	2.16%	0	0.00%	9	1.97%
MORRIS	2	0.84%	0	0.00%	0	0.00%	0	0.00%	3	2.16%	0	0.00%	5	1.10%
OCEAN	11	4.62%	0	0.00%	3	5.88%	2	40.00%	4	2.88%	0	0.00%	20	4.39%
PASSAIC	16	6.72%	0	0.00%	4	7.84%	0	0.00%	15	10.79%	1	9.09%	36	7.89%
SALEM	1	0.42%	0	0.00%	2	3.92%	0	0.00%	1	0.72%	0	0.00%	4	0.88%
SOMERSET	2	0.84%	0	0.00%	0	0.00%	0	0.00%	0	0.00%	0	0.00%	2	0.44%
SUSSEX	1	0.42%	1	8.33%	0	0.00%	0	0.00%	1	0.72%	0	0.00%	3	0.66%
UNION	11	4.62%	0	0.00%	5	9.80%	0	0.00%	11	7.91%	2	18.18%	29	6.36%
WARREN	0	0.00%	0	0.00%	0	0.00%	0	0.00%	1	0.72%	0	0.00%	1	0.22%
OUT OF STATE	0	0.00%	0	0.00%	0	0.00%	0	0.00%	5	3.60%	0	0.00%	5	1.10%
Total	238	100.00%	12	100.00%	51	100.00%	5	100.00%	139	100.00%	11	100.00%	456	100.00%





Juvenile Demographics and Statistics

Current Grade	COMMITTED		PROBATIONER		Total	
	MALE	FEMALE	MALE	FEMALE		
8	0 (0.00%)	0 (0.00%)	3 (5.88%)	0 (0.00%)	3 (0.98%)	
9	18 (7.56%)	1 (8.33%)	7 (13.73%)	1 (20.00%)	27 (8.82%)	
10	39 (16.39%)	5 (41.67%)	21 (41.18%)	1 (20.00%)	66 (21.57%)	
11	44 (18.49%)	3 (25.00%)	11 (21.57%)	1 (20.00%)	59 (19.28%)	
12	44 (18.49%)	0 (0.00%)	2 (3.92%)	0 (0.00%)	46 (15.03%)	
HSG	80 (33.61%)	2 (16.67%)	4 (7.84%)	1 (20.00%)	87 (28.43%)	
GED	6 (2.52%)	0 (0.00%)	0 (0.00%)	1 (20.00%)	7 (2.29%)	
Others **	7 (2.94%)	1 (8.33%)	3 (5.88%)	0 (0.00%)	11 (3.59%)	
Total	238 (100.00%)	12 (100.00%)	51 (100.00%)	5 (100.00%)	306 (100.00%)	

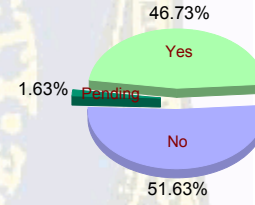


** Includes Aged Out Juveniles and Pending Records

Special Education Services

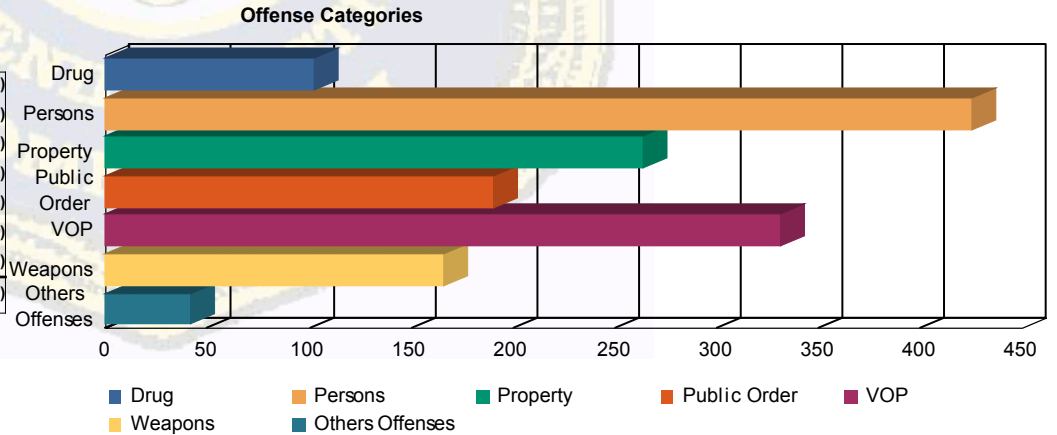
Yes	108 (45.38%)	5 (41.67%)	27 (52.94%)	3 (60.00%)	143 (46.73%)
No	126 (52.94%)	7 (58.33%)	23 (45.10%)	2 (40.00%)	158 (51.63%)
Pending	4 (1.68%)	0 (0.00%)	1 (1.96%)	0 (0.00%)	5 (1.63%)
Total	238 (100.00%)	12 (100.00%)	51 (100.00%)	5 (100.00%)	306 (100.00%)

Special Education



Offense Categories

Drug	81 (6.31%)	6 (8.57%)	14 (8.86%)	1 (11.11%)	102 (6.71%)
Persons	371 (28.92%)	16 (22.86%)	36 (22.78%)	2 (22.22%)	425 (27.96%)
Property	232 (18.08%)	9 (12.86%)	23 (14.56%)	0 (0.00%)	264 (17.37%)
Public Order	162 (12.63%)	14 (20.00%)	13 (8.23%)	1 (11.11%)	190 (12.50%)
VOP	267 (20.81%)	15 (21.43%)	44 (27.85%)	5 (55.56%)	331 (21.78%)
Weapons	139 (10.83%)	8 (11.43%)	19 (12.03%)	0 (0.00%)	166 (10.92%)
Others Offenses	31 (2.42%)	2 (2.86%)	9 (5.70%)	0 (0.00%)	42 (2.76%)
Total *	1,283 (100.00%)	70 (100.00%)	158 (100.00%)	9 (100.00%)	1,520 (100.00%)



* Juveniles may have multiple offenses