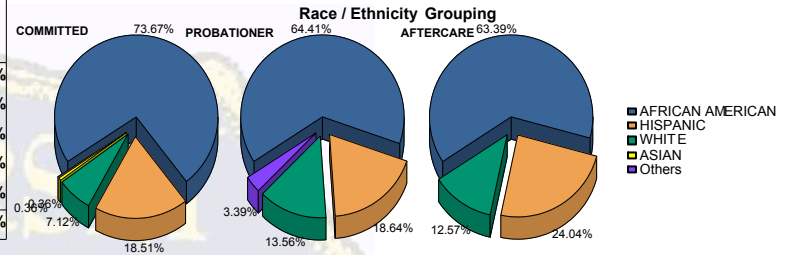




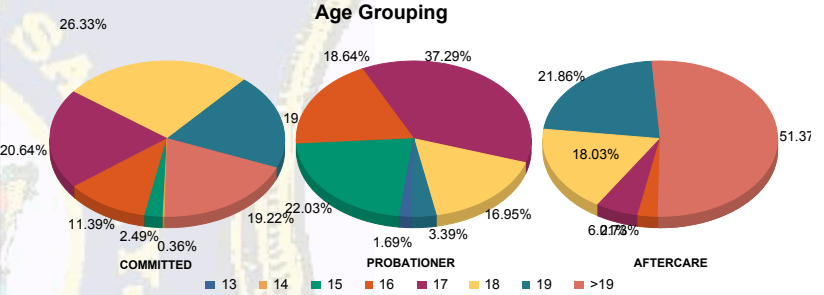
Juvenile Demographics and Statistics

Race/Ethnicity	COMMITTED		PROBATIONER		AFTERCARE		Total							
	MALE	FEMALE	MALE	FEMALE	MALE	FEMALE	MALE	FEMALE						
AFRICAN AMERICAN	197	74.06%	10	66.67%	35	64.81%	3	60.00%	111	64.16%	5	50.00%	361	69.02%
HISPANIC	49	18.42%	3	20.00%	10	18.52%	1	20.00%	42	24.28%	2	20.00%	107	20.46%
WHITE	18	6.77%	2	13.33%	7	12.96%	1	20.00%	20	11.56%	3	30.00%	51	9.75%
ASIAN	1	0.38%	0	0.00%	0	0.00%	0	0.00%	0	0.00%	0	0.00%	1	0.19%
Others	1	0.38%	0	0.00%	2	3.70%	0	0.00%	0	0.00%	0	0.00%	3	0.57%
Total	266	100.00%	15	100.00%	54	100.00%	5	100.00%	173	100.00%	10	100.00%	523	100.00%



Age

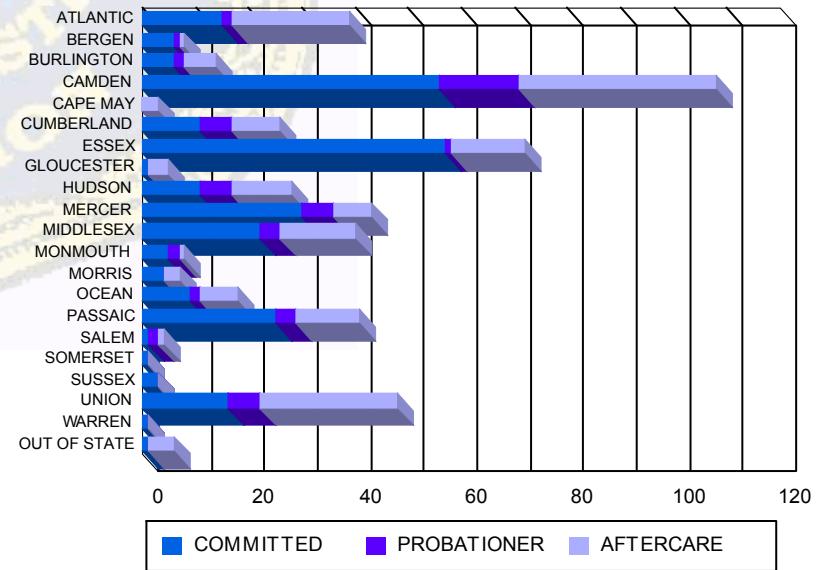
13	0	0.00%	0	0.00%	1	1.85%	0	0.00%	0	0.00%	0	0.00%	1	0.19%
14	1	0.38%	0	0.00%	0	0.00%	0	0.00%	0	0.00%	0	0.00%	1	0.19%
15	7	2.63%	0	0.00%	11	20.37%	2	40.00%	0	0.00%	0	0.00%	20	3.82%
16	30	11.28%	2	13.33%	9	16.67%	2	40.00%	5	2.89%	0	0.00%	48	9.18%
17	54	20.30%	4	26.67%	22	40.74%	0	0.00%	10	5.78%	1	10.00%	91	17.40%
18	70	26.32%	4	26.67%	10	18.52%	0	0.00%	31	17.92%	2	20.00%	117	22.37%
19	53	19.92%	2	13.33%	1	1.85%	1	20.00%	40	23.12%	0	0.00%	97	18.55%
>19	51	19.17%	3	20.00%	0	0.00%	0	0.00%	87	50.29%	7	70.00%	148	28.30%
Total	266	100.00%	15	100.00%	54	100.00%	5	100.00%	173	100.00%	10	100.00%	523	100.00%



Sentencing County

ATLANTIC	15	5.64%	0	0.00%	2	3.70%	0	0.00%	20	11.56%	2	20.00%	39	7.46%
BERGEN	6	2.26%	0	0.00%	1	1.85%	0	0.00%	1	0.58%	0	0.00%	8	1.53%
BURLINGTON	6	2.26%	0	0.00%	2	3.70%	0	0.00%	6	3.47%	0	0.00%	14	2.68%
CAMDEN	51	19.17%	5	33.33%	12	22.22%	3	60.00%	34	19.65%	3	30.00%	108	20.65%
CAPE MAY	0	0.00%	0	0.00%	0	0.00%	0	0.00%	2	1.16%	1	10.00%	3	0.57%
CUMBERLAND	11	4.14%	0	0.00%	6	11.11%	0	0.00%	8	4.62%	1	10.00%	26	4.97%
ESSEX	54	20.30%	3	20.00%	1	1.85%	0	0.00%	14	8.09%	0	0.00%	72	13.77%
GLOUCESTER	1	0.38%	0	0.00%	0	0.00%	0	0.00%	3	1.73%	1	10.00%	5	0.96%
HUDSON	10	3.76%	1	6.67%	6	11.11%	0	0.00%	11	6.36%	0	0.00%	28	5.35%
MERCER	28	10.53%	2	13.33%	6	11.11%	0	0.00%	7	4.05%	0	0.00%	43	8.22%
MIDDLESEX	21	7.89%	1	6.67%	4	7.41%	0	0.00%	14	8.09%	0	0.00%	40	7.65%
MONMOUTH	5	1.88%	0	0.00%	2	3.70%	0	0.00%	1	0.58%	0	0.00%	8	1.53%
MORRIS	3	1.13%	1	6.67%	0	0.00%	0	0.00%	3	1.73%	0	0.00%	7	1.34%
OCEAN	9	3.38%	0	0.00%	2	3.70%	0	0.00%	7	4.05%	0	0.00%	18	3.44%
PASSAIC	25	9.40%	0	0.00%	3	5.56%	1	20.00%	11	6.36%	1	10.00%	41	7.84%
SALEM	1	0.38%	0	0.00%	2	3.70%	0	0.00%	1	0.58%	0	0.00%	4	0.76%
SOMERSET	1	0.38%	0	0.00%	0	0.00%	0	0.00%	0	0.00%	0	0.00%	1	0.19%
SUSSEX	2	0.75%	1	6.67%	0	0.00%	0	0.00%	0	0.00%	0	0.00%	3	0.57%
UNION	15	5.64%	1	6.67%	5	9.26%	1	20.00%	25	14.45%	1	10.00%	48	9.18%
WARREN	1	0.38%	0	0.00%	0	0.00%	0	0.00%	0	0.00%	0	0.00%	1	0.19%
OUT OF STATE	1	0.38%	0	0.00%	0	0.00%	0	0.00%	5	2.89%	0	0.00%	6	1.15%
Total	266	100.00%	15	100.00%	54	100.00%	5	100.00%	173	100.00%	10	100.00%	523	100.00%

Count of Juveniles By Sentencing County





Juvenile Demographics and Statistics

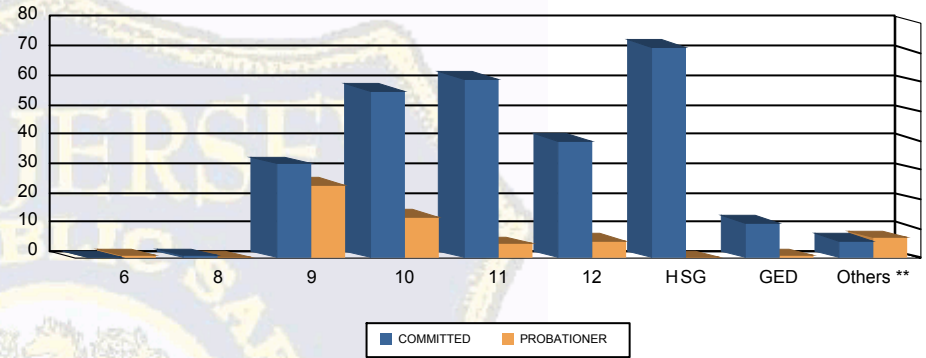
Current Grade	COMMITTED		PROBATIONER		Total	
	MALE	FEMALE	MALE	FEMALE		
6	0 (0.00%)	0 (0.00%)	1 (1.85%)	0 (0.00%)	1 (0.29%)	
8	1 (0.38%)	0 (0.00%)	0 (0.00%)	0 (0.00%)	1 (0.29%)	
9	30 (11.28%)	2 (13.33%)	22 (40.74%)	3 (60.00%)	57 (16.76%)	
10	54 (20.30%)	3 (20.00%)	13 (24.07%)	1 (20.00%)	71 (20.88%)	
11	57 (21.43%)	4 (26.67%)	4 (7.41%)	1 (20.00%)	66 (19.41%)	
12	40 (15.04%)	0 (0.00%)	6 (11.11%)	0 (0.00%)	46 (13.53%)	
HSG	68 (25.56%)	4 (26.67%)	0 (0.00%)	0 (0.00%)	72 (21.18%)	
GED	11 (4.14%)	1 (6.67%)	1 (1.85%)	0 (0.00%)	13 (3.82%)	
Others **	5 (1.88%)	1 (6.67%)	7 (12.96%)	0 (0.00%)	13 (3.82%)	
Total	266 (100.00%)	15 (100.00%)	54 (100.00%)	5 (100.00%)	340 (100.00%)	

** Includes Aged Out Juveniles and Pending Records

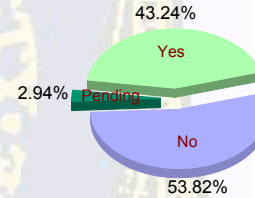
Special Education Services

Yes	115 (43.23%)	7 (46.67%)	24 (44.44%)	1 (20.00%)	147 (43.24%)
No	149 (56.02%)	7 (46.67%)	23 (42.59%)	4 (80.00%)	183 (53.82%)
Pending	2 (0.75%)	1 (6.67%)	7 (12.96%)	0 (0.00%)	10 (2.94%)
Total	266 (100.00%)	15 (100.00%)	54 (100.00%)	5 (100.00%)	340 (100.00%)

Current Grade



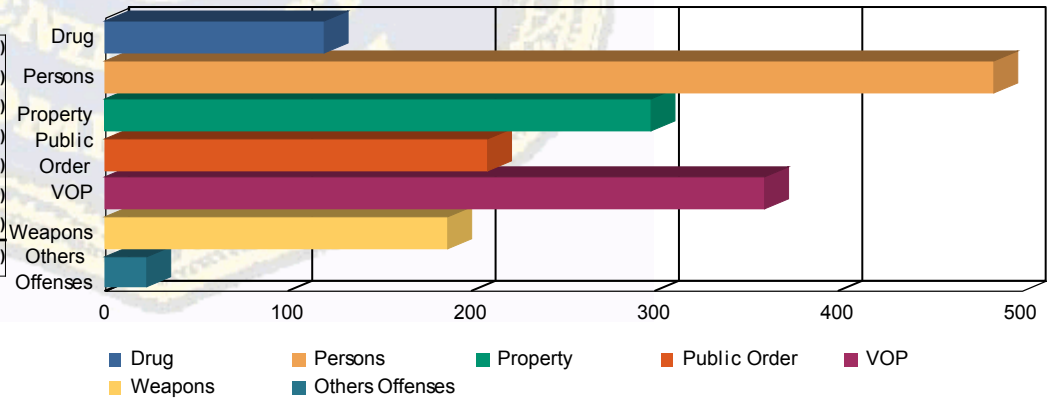
Special Education



Offense Categories

Drug	104 (7.19%)	4 (5.26%)	10 (7.14%)	1 (7.14%)	119 (7.10%)
Persons	423 (29.25%)	18 (23.68%)	41 (29.29%)	2 (14.29%)	484 (28.88%)
Property	265 (18.33%)	15 (19.74%)	16 (11.43%)	1 (7.14%)	297 (17.72%)
Public Order	176 (12.17%)	13 (17.11%)	16 (11.43%)	3 (21.43%)	208 (12.41%)
VOP	298 (20.61%)	18 (23.68%)	38 (27.14%)	5 (35.71%)	359 (21.42%)
Weapons	161 (11.13%)	7 (9.21%)	17 (12.14%)	2 (14.29%)	187 (11.16%)
Others Offenses	19 (1.31%)	1 (1.32%)	2 (1.43%)	0 (0.00%)	22 (1.31%)
Total *	1,446 (100.00%)	76 (100.00%)	140 (100.00%)	14 (100.00%)	1,676 (100.00%)

Offense Categories



* Juveniles may have multiple offenses