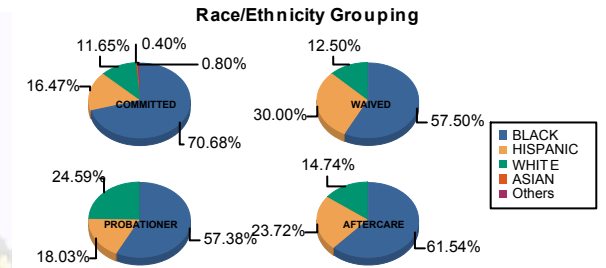




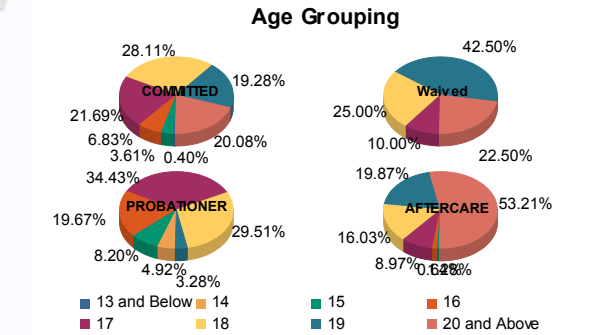
Juvenile Demographics and Statistics

Race/ Ethnicity	COMMITTED				WAIVED				PROBATIONER				AFTERCARE				Total	
	MALE	FEMALE	MALE	FEMALE	MALE	FEMALE	MALE	FEMALE	MALE	FEMALE	MALE	FEMALE	MALE	FEMALE				
BLACK	172	72.27%	4	36.36%	22	56.41%	1	100.00%	33	58.93%	2	40.00%	90	62.07%	6	54.55%	330	65.22%
HISPANIC	39	16.39%	2	18.18%	12	30.77%	0	0.00%	10	17.86%	1	20.00%	35	24.14%	2	18.18%	101	19.96%
WHITE	24	10.08%	5	45.45%	5	12.82%	0	0.00%	13	23.21%	2	40.00%	20	13.79%	3	27.27%	72	14.23%
ASIAN	1	0.42%	0	0.00%	0	0.00%	0	0.00%	0	0.00%	0	0.00%	0	0.00%	0	0.00%	1	0.20%
Others	2	0.84%	0	0.00%	0	0.00%	0	0.00%	0	0.00%	0	0.00%	0	0.00%	0	0.00%	2	0.40%
Total	238	100.00%	11	100.00%	39	100.00%	1	100.00%	56	100.00%	5	100.00%	145	100.00%	11	100.00%	506	100.00%



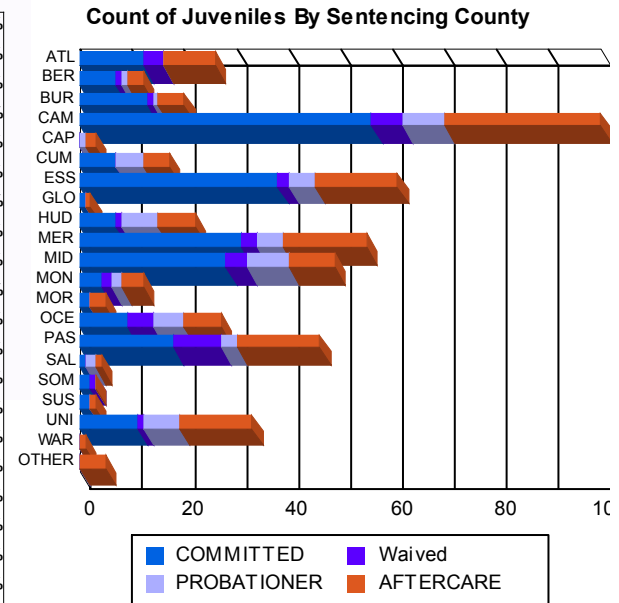
Age

13 and Below	1	0.42%	0	0.00%	0	0.00%	0	0.00%	0	0.00%	0	0.00%	0	0.00%	0	0.00%	1	0.20%
14	0	0.00%	0	0.00%	0	0.00%	0	0.00%	3	5.36%	0	0.00%	0	0.00%	0	0.00%	3	0.59%
15	9	3.78%	0	0.00%	0	0.00%	0	0.00%	4	7.14%	1	20.00%	1	0.69%	0	0.00%	15	2.96%
16	16	6.72%	1	9.09%	0	0.00%	0	0.00%	12	21.43%	0	0.00%	2	1.38%	0	0.00%	31	6.13%
17	51	21.43%	3	27.27%	4	10.26%	0	0.00%	19	33.93%	2	40.00%	11	7.59%	3	27.27%	93	18.38%
18	68	28.57%	2	18.18%	10	25.64%	0	0.00%	16	28.57%	2	40.00%	23	15.86%	2	18.18%	123	24.31%
19	46	19.33%	2	18.18%	16	41.03%	1	100.00%	2	3.57%	0	0.00%	28	19.31%	3	27.27%	98	19.37%
20 and Above	47	19.75%	3	27.27%	9	23.08%	0	0.00%	0	0.00%	0	0.00%	80	55.17%	3	27.27%	142	28.06%
Total	238	100.00%	11	100.00%	39	100.00%	1	100.00%	56	100.00%	5	100.00%	145	100.00%	11	100.00%	506	100.00%
Average Age	18.27		18.45		18.79		19.00		16.84		17.00		20.43		19.00		18.78	



Sentencing County

ATL	12	5.04%	0	0.00%	4	10.26%	0	0.00%	0	0.00%	0	0.00%	9	6.21%	1	9.09%	26	5.14%
BER	7	2.94%	0	0.00%	1	2.56%	0	0.00%	1	1.79%	0	0.00%	3	2.07%	0	0.00%	12	2.37%
BUR	11	4.62%	2	18.18%	1	2.56%	0	0.00%	1	1.79%	0	0.00%	4	2.76%	1	9.09%	20	3.95%
CAM	52	21.85%	4	36.36%	5	12.82%	1	100.00%	6	10.71%	2	40.00%	27	18.62%	3	27.27%	100	19.76%
CAP	0	0.00%	0	0.00%	0	0.00%	0	0.00%	1	1.79%	0	0.00%	2	1.38%	0	0.00%	3	0.59%
CUM	7	2.94%	0	0.00%	0	0.00%	0	0.00%	5	8.93%	0	0.00%	5	3.45%	0	0.00%	17	3.36%
ESS	38	15.97%	0	0.00%	2	5.13%	0	0.00%	5	8.93%	0	0.00%	15	10.34%	1	9.09%	61	12.06%
GLO	1	0.42%	0	0.00%	0	0.00%	0	0.00%	0	0.00%	0	0.00%	1	0.69%	0	0.00%	2	0.40%
HUD	7	2.94%	0	0.00%	1	2.56%	0	0.00%	7	12.50%	0	0.00%	7	4.83%	0	0.00%	22	4.35%
MER	29	12.18%	2	18.18%	3	7.69%	0	0.00%	4	7.14%	1	20.00%	14	9.66%	2	18.18%	55	10.87%
MID	26	10.92%	2	18.18%	4	10.26%	0	0.00%	8	14.29%	0	0.00%	9	6.21%	0	0.00%	49	9.68%
MON	4	1.68%	0	0.00%	2	5.13%	0	0.00%	2	3.57%	0	0.00%	4	2.76%	0	0.00%	12	2.37%
MOR	2	0.84%	0	0.00%	0	0.00%	0	0.00%	0	0.00%	0	0.00%	3	2.07%	0	0.00%	5	0.99%
OCE	9	3.78%	0	0.00%	5	12.82%	0	0.00%	4	7.14%	2	40.00%	7	4.83%	0	0.00%	27	5.34%
PAS	18	7.56%	0	0.00%	9	23.08%	0	0.00%	3	5.36%	0	0.00%	15	10.34%	1	9.09%	46	9.09%
SAL	1	0.42%	0	0.00%	0	0.00%	0	0.00%	2	3.57%	0	0.00%	1	0.69%	0	0.00%	4	0.79%
SOM	2	0.84%	0	0.00%	1	2.56%	0	0.00%	0	0.00%	0	0.00%	0	0.00%	0	0.00%	3	0.59%
SUS	1	0.42%	1	9.09%	0	0.00%	0	0.00%	0	0.00%	0	0.00%	1	0.69%	0	0.00%	3	0.59%
UNI	11	4.62%	0	0.00%	1	2.56%	0	0.00%	7	12.50%	0	0.00%	12	8.28%	2	18.18%	33	6.52%
WAR	0	0.00%	0	0.00%	0	0.00%	0	0.00%	0	0.00%	0	0.00%	1	0.69%	0	0.00%	1	0.20%
OTHER	0	0.00%	0	0.00%	0	0.00%	0	0.00%	0	0.00%	0	0.00%	5	3.45%	0	0.00%	5	0.99%
Total	238	100.00%	11	100.00%	39	100.00%	1	100.00%	56	100.00%	5	100.00%	145	100.00%	11	100.00%	506	100.00%





Juvenile Demographics and Statistics

Current Grade	COMMITTED		WAIVED		PROBATIONER		Total
	MALE	FEMALE	MALE	FEMALE	MALE	FEMALE	
7	1 (0.42%)	0 (0.00%)	0 (0.00%)	0 (0.00%)	0 (0.00%)	0 (0.00%)	1 (0.29%)
8	2 (0.84%)	0 (0.00%)	0 (0.00%)	0 (0.00%)	2 (3.57%)	0 (0.00%)	4 (1.14%)
9	20 (8.40%)	1 (9.09%)	1 (2.56%)	0 (0.00%)	5 (8.93%)	1 (20.00%)	28 (8.00%)
10	37 (15.55%)	5 (45.45%)	9 (23.08%)	0 (0.00%)	23 (41.07%)	0 (0.00%)	74 (21.14%)
11	46 (19.33%)	3 (27.27%)	3 (7.69%)	0 (0.00%)	15 (26.79%)	1 (20.00%)	68 (19.43%)
12	36 (15.13%)	0 (0.00%)	5 (12.82%)	0 (0.00%)	1 (1.79%)	0 (0.00%)	42 (12.00%)
HSG	87 (36.55%)	1 (9.09%)	21 (53.85%)	1 (100.00%)	5 (8.93%)	1 (20.00%)	116 (33.14%)
GED	6 (2.52%)	0 (0.00%)	0 (0.00%)	0 (0.00%)	0 (0.00%)	1 (20.00%)	7 (2.00%)
Others **	3 (1.26%)	1 (9.09%)	0 (0.00%)	0 (0.00%)	5 (8.93%)	1 (20.00%)	10 (2.86%)
Total	238 (100.00%)	11 (100.00%)	39 (100.00%)	1 (100.00%)	56 (100.00%)	5 (100.00%)	350 (100.00%)

** Includes Aged Out Juveniles and Pending Records

Special Education Services

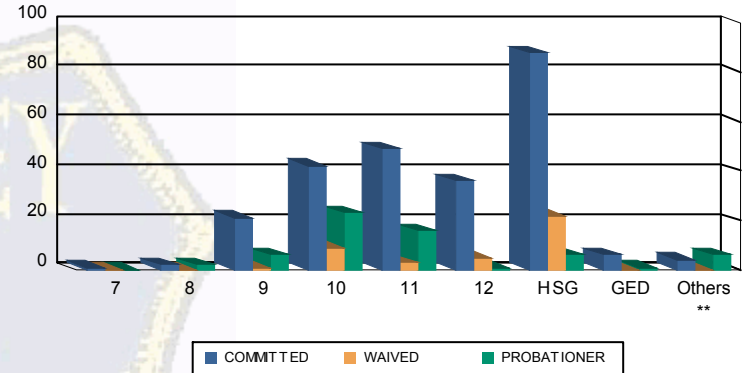
Yes	111 (46.64%)	4 (36.36%)	11 (28.21%)	1 (100.00%)	29 (51.79%)	3 (60.00%)	159 (45.43%)
No	127 (53.36%)	7 (63.64%)	28 (71.79%)	0 (0.00%)	24 (42.86%)	2 (40.00%)	188 (53.71%)
Pending	0 (0.00%)	0 (0.00%)	0 (0.00%)	0 (0.00%)	3 (5.36%)	0 (0.00%)	3 (0.86%)
Total	238 (100.00%)	11 (100.00%)	39 (100.00%)	1 (100.00%)	56 (100.00%)	5 (100.00%)	350 (100.00%)

Offense Categories

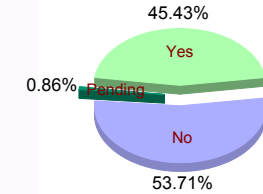
Drug	81 (6.24%)	6 (8.96%)	7 (9.59%)	1 (9.09%)	20 (11.49%)	1 (11.11%)	116 (7.11%)
Persons	380 (29.28%)	15 (22.39%)	33 (45.21%)	3 (27.27%)	40 (22.99%)	2 (22.22%)	473 (28.98%)
Property	236 (18.18%)	9 (13.43%)	5 (6.85%)	2 (18.18%)	29 (16.67%)	0 (0.00%)	281 (17.22%)
Public Order	171 (13.17%)	14 (20.90%)	8 (10.96%)	2 (18.18%)	14 (8.05%)	1 (11.11%)	210 (12.87%)
VOP	273 (21.03%)	14 (20.90%)	3 (4.11%)	2 (18.18%)	50 (28.74%)	5 (55.56%)	347 (21.26%)
Weapons	142 (10.94%)	8 (11.94%)	17 (23.29%)	0 (0.00%)	18 (10.34%)	0 (0.00%)	185 (11.34%)
Others Offenses	15 (1.16%)	1 (1.49%)	0 (0.00%)	1 (9.09%)	3 (1.72%)	0 (0.00%)	20 (1.23%)
Total *	1,298 (100.00%)	67 (100.00%)	73 (100.00%)	11 (100.00%)	174 (100.00%)	9 (100.00%)	1,632 (100.00%)

* Juveniles may have multiple offenses

Current Grade



Special Education



Offense Categories

