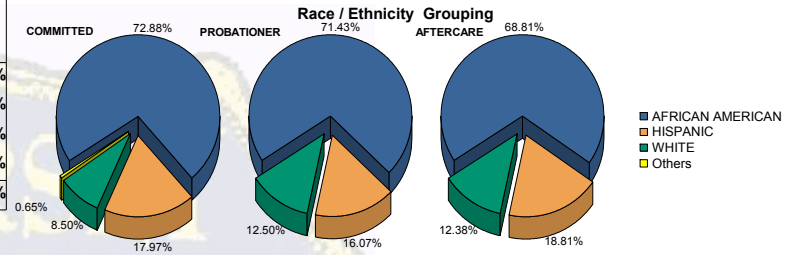




Juvenile Demographics and Statistics

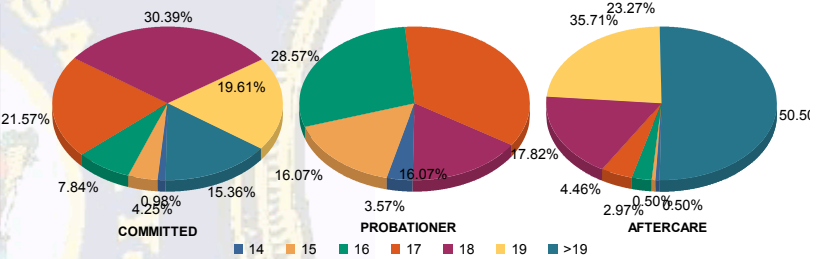
Race/Ethnicity	COMMITTED		PROBATIONER		AFTERCARE		Total							
	MALE	FEMALE	MALE	FEMALE	MALE	FEMALE	MALE	FEMALE						
AFRICAN AMERICAN	217	73.56%	6	54.55%	38	73.08%	2	50.00%	131	68.23%	8	80.00%	402	71.28%
HISPANIC	54	18.31%	1	9.09%	9	17.31%	0	0.00%	37	19.27%	1	10.00%	102	18.09%
WHITE	22	7.46%	4	36.36%	5	9.62%	2	50.00%	24	12.50%	1	10.00%	58	10.28%
Others	2	0.68%	0	0.00%	0	0.00%	0	0.00%	0	0.00%	0	0.00%	2	0.35%
<b>Total</b>	<b>295</b>	<b>100.00%</b>	<b>11</b>	<b>100.00%</b>	<b>52</b>	<b>100.00%</b>	<b>4</b>	<b>100.00%</b>	<b>192</b>	<b>100.00%</b>	<b>10</b>	<b>100.00%</b>	<b>564</b>	<b>100.00%</b>



**Age**

14	3	1.02%	0	0.00%	2	3.85%	0	0.00%	1	0.52%	0	0.00%	6	1.06%
15	12	4.07%	1	9.09%	8	15.38%	1	25.00%	1	0.52%	0	0.00%	23	4.08%
16	23	7.80%	1	9.09%	16	30.77%	0	0.00%	5	2.60%	1	10.00%	46	8.16%
17	65	22.03%	1	9.09%	18	34.62%	2	50.00%	9	4.69%	0	0.00%	95	16.84%
18	91	30.85%	2	18.18%	8	15.38%	1	25.00%	33	17.19%	3	30.00%	138	24.47%
19	57	19.32%	3	27.27%	0	0.00%	0	0.00%	44	22.92%	3	30.00%	107	18.97%
>19	44	14.92%	3	27.27%	0	0.00%	0	0.00%	99	51.56%	3	30.00%	149	26.42%
<b>Total</b>	<b>295</b>	<b>100.00%</b>	<b>11</b>	<b>100.00%</b>	<b>52</b>	<b>100.00%</b>	<b>4</b>	<b>100.00%</b>	<b>192</b>	<b>100.00%</b>	<b>10</b>	<b>100.00%</b>	<b>564</b>	<b>100.00%</b>

**Age Grouping**

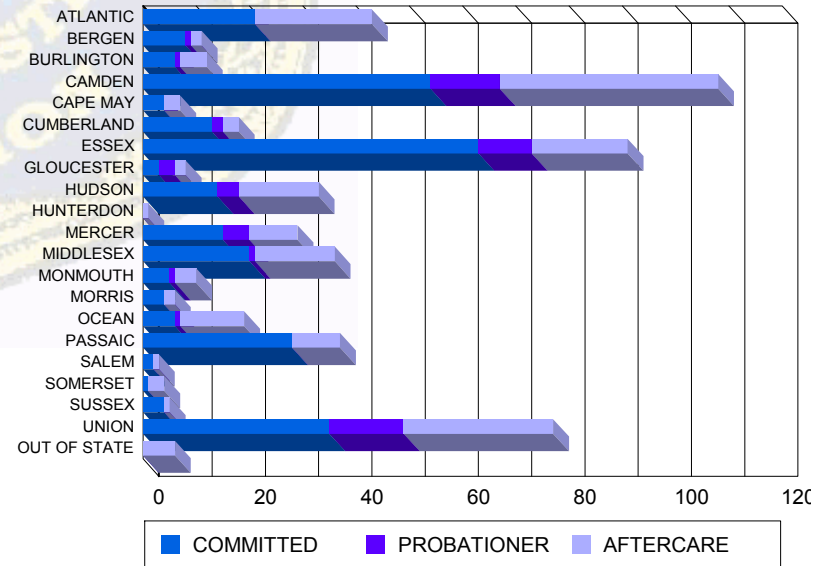


Average Age	COMMITTED	PROBATIONER	AFTERCARE	Total
Average Age	18.08	18.55	16.42	18.58

**Sentencing County**

ATLANTIC	21	7.12%	0	0.00%	0	0.00%	0	0.00%	20	10.42%	2	20.00%	43	7.62%
BERGEN	8	2.71%	0	0.00%	1	1.92%	0	0.00%	2	1.04%	0	0.00%	11	1.95%
BURLINGTON	6	2.03%	0	0.00%	0	0.00%	1	25.00%	5	2.60%	0	0.00%	12	2.13%
CAMDEN	52	17.63%	2	18.18%	10	19.23%	3	75.00%	39	20.31%	2	20.00%	108	19.15%
CAPE MAY	3	1.02%	1	9.09%	0	0.00%	0	0.00%	3	1.56%	0	0.00%	7	1.24%
CUMBERLAND	12	4.07%	1	9.09%	2	3.85%	0	0.00%	3	1.56%	0	0.00%	18	3.19%
ESSEX	60	20.34%	3	27.27%	10	19.23%	0	0.00%	15	7.81%	3	30.00%	91	16.13%
GLOUCESTER	3	1.02%	0	0.00%	3	5.77%	0	0.00%	2	1.04%	0	0.00%	8	1.42%
HUDSON	14	4.75%	0	0.00%	4	7.69%	0	0.00%	15	7.81%	0	0.00%	33	5.85%
HUNTERDON	0	0.00%	0	0.00%	0	0.00%	0	0.00%	1	0.52%	0	0.00%	1	0.18%
MERCER	13	4.41%	2	18.18%	5	9.62%	0	0.00%	8	4.17%	1	10.00%	29	5.14%
MIDDLESEX	20	6.78%	0	0.00%	1	1.92%	0	0.00%	15	7.81%	0	0.00%	36	6.38%
MONMOUTH	5	1.69%	0	0.00%	1	1.92%	0	0.00%	4	2.08%	0	0.00%	10	1.77%
MORRIS	4	1.36%	0	0.00%	0	0.00%	0	0.00%	2	1.04%	0	0.00%	6	1.06%
OCEAN	6	2.03%	0	0.00%	1	1.92%	0	0.00%	12	6.25%	0	0.00%	19	3.37%
PASSAIC	27	9.15%	1	9.09%	0	0.00%	0	0.00%	9	4.69%	0	0.00%	37	6.56%
SALEM	2	0.68%	0	0.00%	0	0.00%	0	0.00%	1	0.52%	0	0.00%	3	0.53%
SOMERSET	1	0.34%	0	0.00%	0	0.00%	0	0.00%	3	1.56%	0	0.00%	4	0.71%
SUSSEX	3	1.02%	1	9.09%	0	0.00%	0	0.00%	1	0.52%	0	0.00%	5	0.89%
UNION	35	11.86%	0	0.00%	14	26.92%	0	0.00%	26	13.54%	2	20.00%	77	13.65%
OUT OF STATE	0	0.00%	0	0.00%	0	0.00%	0	0.00%	6	3.13%	0	0.00%	6	1.06%
<b>Total</b>	<b>295</b>	<b>100.00%</b>	<b>11</b>	<b>100.00%</b>	<b>52</b>	<b>100.00%</b>	<b>4</b>	<b>100.00%</b>	<b>192</b>	<b>100.00%</b>	<b>10</b>	<b>100.00%</b>	<b>564</b>	<b>100.00%</b>

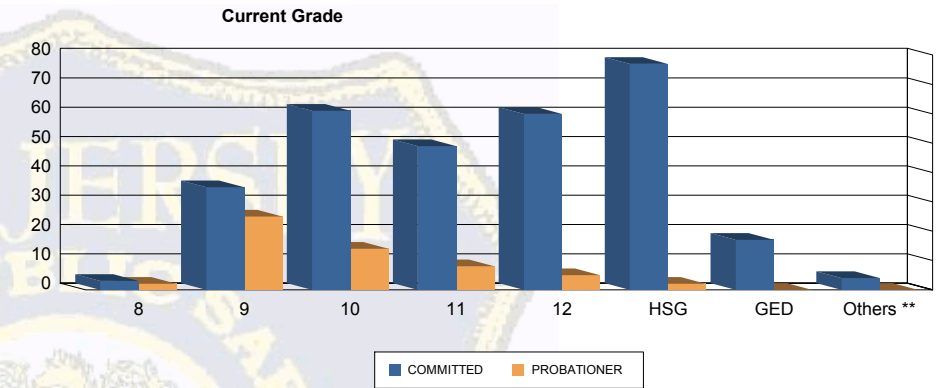
**Count of Juveniles By Sentencing County**





Juvenile Demographics and Statistics

Current Grade	COMMITTED		PROBATIONER		Total
	MALE	FEMALE	MALE	FEMALE	
8	3 (1.02%)	0 0.00%	2 (3.85%)	0 0.00%	5 (1.38%)
9	34 (11.53%)	1 (9.09%)	22 (42.31%)	3 (75.00%)	60 (16.57%)
10	58 (19.66%)	3 (27.27%)	14 (26.92%)	0 0.00%	75 (20.72%)
11	46 (15.59%)	3 (27.27%)	7 (13.46%)	1 (25.00%)	57 (15.75%)
12	59 (20.00%)	1 (9.09%)	5 (9.62%)	0 0.00%	65 (17.96%)
HSG	75 (25.42%)	2 (18.18%)	2 (3.85%)	0 0.00%	79 (21.82%)
GED	16 (5.42%)	1 (9.09%)	0 0.00%	0 0.00%	17 (4.70%)
Others **	4 (1.36%)	0 0.00%	0 0.00%	0 0.00%	4 (1.10%)
<b>Total</b>	<b>295 (100.00%)</b>	<b>11 (100.00%)</b>	<b>52 (100.00%)</b>	<b>4 (100.00%)</b>	<b>362 (100.00%)</b>

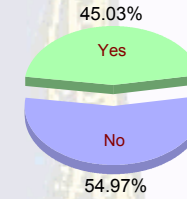


\*\* Includes Aged Out Juveniles and Pending Records

Special Education Services

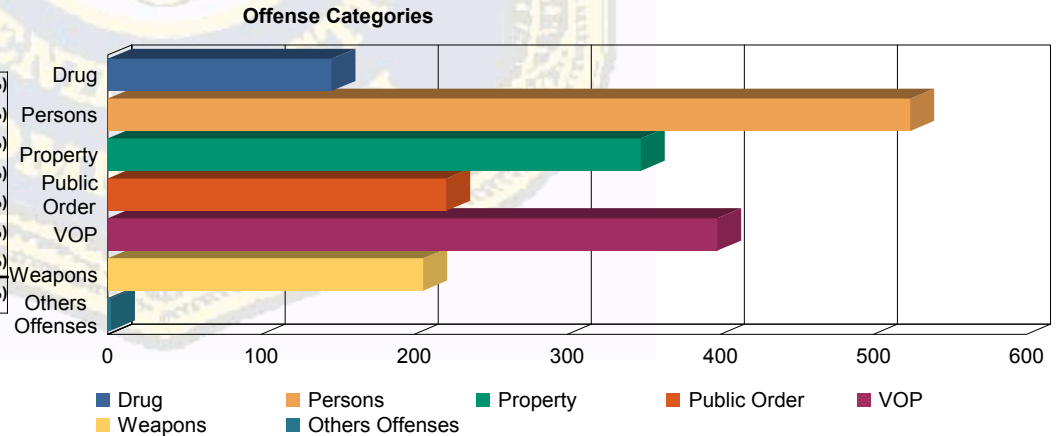
Yes	134 (45.42%)	8 (72.73%)	18 (34.62%)	3 (75.00%)	163 (45.03%)
No	161 (54.58%)	3 (27.27%)	34 (65.38%)	1 (25.00%)	199 (54.97%)
<b>Total</b>	<b>295 (100.00%)</b>	<b>11 (100.00%)</b>	<b>52 (100.00%)</b>	<b>4 (100.00%)</b>	<b>362 (100.00%)</b>

Special Education



Offense Categories

Drug	135 (8.16%)	1 (1.92%)	10 (7.63%)	0 0.00%	146 (7.91%)
Persons	471 (28.48%)	15 (28.85%)	37 (28.24%)	1 (12.50%)	524 (28.40%)
Property	309 (18.68%)	11 (21.15%)	26 (19.85%)	2 (25.00%)	348 (18.86%)
Public Order	197 (11.91%)	9 (17.31%)	13 (9.92%)	2 (25.00%)	221 (11.98%)
VOP	353 (21.34%)	10 (19.23%)	33 (25.19%)	2 (25.00%)	398 (21.57%)
Weapons	188 (11.37%)	5 (9.62%)	12 (9.16%)	1 (12.50%)	206 (11.17%)
Others Offenses	1 (0.06%)	1 (1.92%)	0 0.00%	0 0.00%	2 (0.11%)
<b>Total *</b>	<b>1,654 (100.00%)</b>	<b>52 (100.00%)</b>	<b>131 (100.00%)</b>	<b>8 (100.00%)</b>	<b>1,845 (100.00%)</b>



\* Juveniles may have multiple offenses