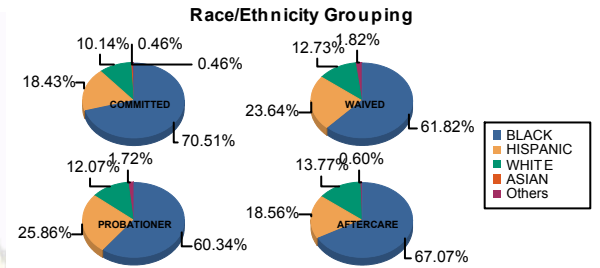




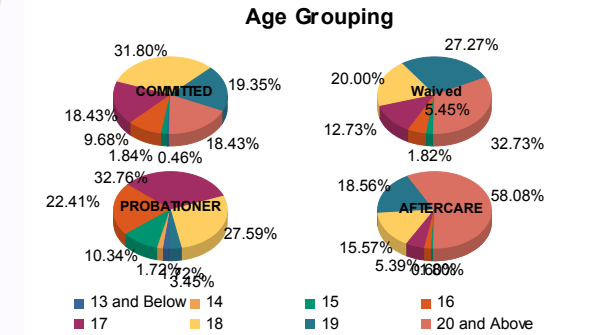
Juvenile Demographics and Statistics

Race/ Ethnicity	COMMITTED				WAIVED				PROBATIONER				AFTERCARE				Total	
	MALE	FEMALE	MALE	FEMALE	MALE	FEMALE	MALE	FEMALE	MALE	FEMALE	MALE	FEMALE	MALE	FEMALE	MALE	FEMALE		
BLACK	147	71.01%	6	60.00%	31	59.62%	3	100.00%	34	60.71%	1	50.00%	108	68.35%	4	44.44%	334	67.20%
HISPANIC	39	18.84%	1	10.00%	13	25.00%	0	0.00%	15	26.79%	0	0.00%	30	18.99%	1	11.11%	99	19.92%
WHITE	19	9.18%	3	30.00%	7	13.46%	0	0.00%	6	10.71%	1	50.00%	19	12.03%	4	44.44%	59	11.87%
ASIAN	1	0.48%	0	0.00%	0	0.00%	0	0.00%	0	0.00%	0	0.00%	0	0.00%	0	0.00%	1	0.20%
Others	1	0.48%	0	0.00%	1	1.92%	0	0.00%	1	1.79%	0	0.00%	1	0.63%	0	0.00%	4	0.80%
Total	207	100.00%	10	100.00%	52	100.00%	3	100.00%	56	100.00%	2	100.00%	158	100.00%	9	100.00%	497	100.00%



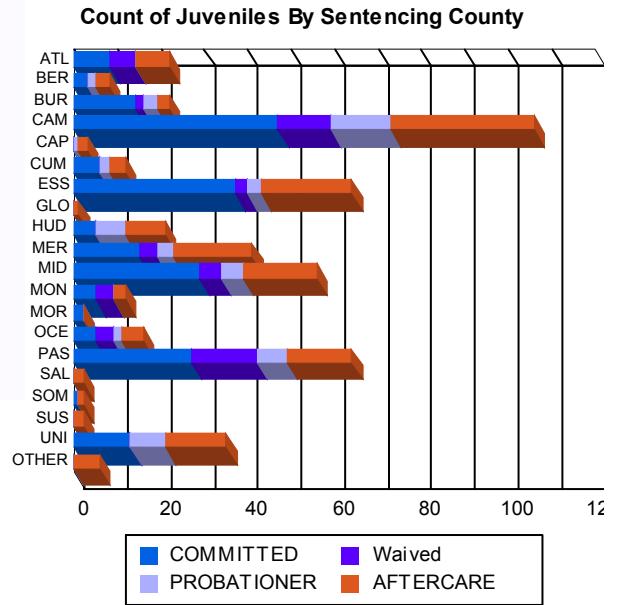
Age

Age Group	MALE	FEMALE	MALE	FEMALE	MALE	FEMALE	MALE	FEMALE	MALE	FEMALE	MALE	FEMALE	Total	Percentage					
13 and Below	1	0.48%	0	0.00%	0	0.00%	0	0.00%	1	1.79%	0	0.00%	0	0.00%	2	0.40%			
14	0	0.00%	0	0.00%	0	0.00%	0	0.00%	1	1.79%	0	0.00%	0	0.00%	1	0.20%			
15	4	1.93%	0	0.00%	1	1.92%	0	0.00%	6	10.71%	0	0.00%	1	0.63%	12	2.41%			
16	20	9.66%	1	10.00%	3	5.77%	0	0.00%	13	23.21%	0	0.00%	3	1.90%	40	8.05%			
17	36	17.39%	4	40.00%	7	13.46%	0	0.00%	19	33.93%	0	0.00%	9	5.70%	75	15.09%			
18	69	33.33%	0	0.00%	11	21.15%	0	0.00%	15	26.79%	1	50.00%	24	15.19%	2	22.22%	122	24.55%	
19	39	18.84%	3	30.00%	14	26.92%	1	33.33%	1	1.79%	1	50.00%	31	19.62%	0	0.00%	90	18.11%	
20 and Above	38	18.36%	2	20.00%	16	30.77%	2	66.67%	0	0.00%	0	0.00%	90	56.96%	7	77.78%	155	31.19%	
Total	207	100.00%	10	100.00%	52	100.00%	3	100.00%	56	100.00%	2	100.00%	158	100.00%	9	100.00%	497	100.00%	
Average Age	18.24		18.10		18.67		19.67		16.73		18.50		20.51		21.22		18.90		



Sentencing County

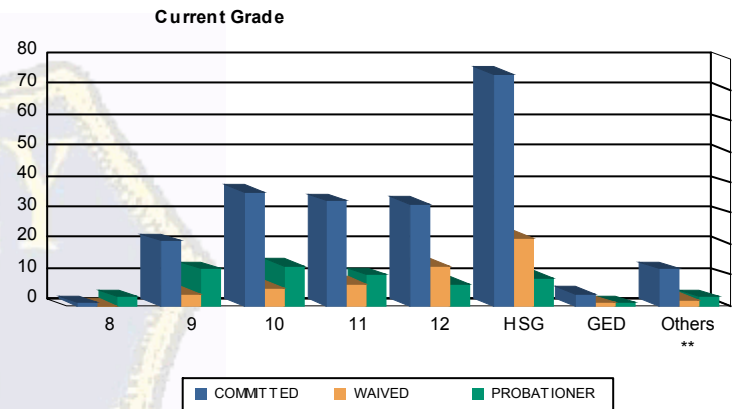
County	MALE	FEMALE	MALE	FEMALE	MALE	FEMALE	MALE	FEMALE	MALE	FEMALE	MALE	FEMALE	Total	Percentage				
ATL	8	3.86%	0	0.00%	6	11.54%	0	0.00%	0	0.00%	0	0.00%	7	4.43%				
BER	3	1.45%	0	0.00%	0	0.00%	0	0.00%	2	3.57%	0	0.00%	3	1.90%				
BUR	13	6.28%	1	10.00%	2	3.85%	0	0.00%	3	5.36%	0	0.00%	2	1.27%				
CAM	45	21.74%	2	20.00%	9	17.31%	3	100.00%	13	23.21%	1	50.00%	31	19.62%				
CAP	0	0.00%	0	0.00%	0	0.00%	0	0.00%	1	1.79%	0	0.00%	2	1.27%				
CUM	6	2.90%	0	0.00%	0	0.00%	0	0.00%	2	3.57%	0	0.00%	4	2.53%				
ESS	37	17.87%	0	0.00%	3	5.77%	0	0.00%	3	5.36%	0	0.00%	19	12.03%				
GLO	0	0.00%	0	0.00%	0	0.00%	0	0.00%	0	0.00%	0	0.00%	1	0.63%				
HUD	5	2.42%	0	0.00%	0	0.00%	0	0.00%	7	12.50%	0	0.00%	9	5.70%				
MER	15	7.25%	0	0.00%	4	7.69%	0	0.00%	4	7.14%	0	0.00%	18	11.39%				
MID	25	12.08%	4	40.00%	5	9.62%	0	0.00%	5	8.93%	0	0.00%	17	10.76%				
MON	5	2.42%	0	0.00%	4	7.69%	0	0.00%	0	0.00%	0	0.00%	3	1.90%				
MOR	2	0.97%	0	0.00%	0	0.00%	0	0.00%	0	0.00%	0	0.00%	0	0.00%				
OCE	5	2.42%	0	0.00%	4	7.69%	0	0.00%	2	3.57%	0	0.00%	5	3.16%				
PAS	25	12.08%	2	20.00%	15	28.85%	0	0.00%	6	10.71%	1	50.00%	14	8.86%				
SAL	0	0.00%	0	0.00%	0	0.00%	0	0.00%	0	0.00%	0	0.00%	2	1.27%				
SOM	1	0.48%	0	0.00%	0	0.00%	0	0.00%	0	0.00%	0	0.00%	1	0.63%				
SUS	0	0.00%	0	0.00%	0	0.00%	0	0.00%	0	0.00%	0	0.00%	1	0.63%				
UNI	12	5.80%	1	10.00%	0	0.00%	0	0.00%	8	14.29%	0	0.00%	13	8.23%				
OTHER	0	0.00%	0	0.00%	0	0.00%	0	0.00%	0	0.00%	0	0.00%	6	3.80%				
Total	207	100.00%	10	100.00%	52	100.00%	3	100.00%	56	100.00%	2	100.00%	158	100.00%	9	100.00%	497	100.00%





Juvenile Demographics and Statistics

Current Grade	COMMITTED		WAIVED		PROBATIONER		Total
	MALE	FEMALE	MALE	FEMALE	MALE	FEMALE	
8	1 (0.48%)	0 (0.00%)	0 (0.00%)	0 (0.00%)	3 (5.36%)	0 (0.00%)	4 (1.21%)
9	19 (9.18%)	2 (20.00%)	4 (7.69%)	0 (0.00%)	12 (21.43%)	0 (0.00%)	37 (11.21%)
10	34 (16.43%)	3 (30.00%)	6 (11.54%)	0 (0.00%)	13 (23.21%)	0 (0.00%)	56 (16.97%)
11	33 (15.94%)	1 (10.00%)	7 (13.46%)	0 (0.00%)	10 (17.86%)	0 (0.00%)	51 (15.45%)
12	32 (15.46%)	1 (10.00%)	12 (23.08%)	1 (33.33%)	6 (10.71%)	1 (50.00%)	53 (16.06%)
HSG	72 (34.78%)	3 (30.00%)	20 (38.46%)	2 (66.67%)	8 (14.29%)	1 (50.00%)	106 (32.12%)
GED	4 (1.93%)	0 (0.00%)	1 (1.92%)	0 (0.00%)	1 (1.79%)	0 (0.00%)	6 (1.82%)
Others **	12 (5.80%)	0 (0.00%)	2 (3.85%)	0 (0.00%)	3 (5.36%)	0 (0.00%)	17 (5.15%)
Total	207 (100.00%)	10 (100.00%)	52 (100.00%)	3 (100.00%)	56 (100.00%)	2 (100.00%)	330 (100.00%)

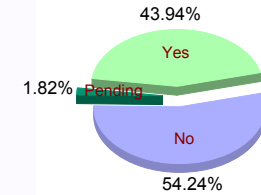


** Includes Aged Out Juveniles and Pending Records

Special Education Services

Yes	94 (45.41%)	3 (30.00%)	19 (36.54%)	2 (66.67%)	26 (46.43%)	1 (50.00%)	145 (43.94%)
No	111 (53.62%)	7 (70.00%)	31 (59.62%)	1 (33.33%)	28 (50.00%)	1 (50.00%)	179 (54.24%)
Pending	2 (0.97%)	0 (0.00%)	2 (3.85%)	0 (0.00%)	2 (3.57%)	0 (0.00%)	6 (1.82%)
Total	207 (100.00%)	10 (100.00%)	52 (100.00%)	3 (100.00%)	56 (100.00%)	2 (100.00%)	330 (100.00%)

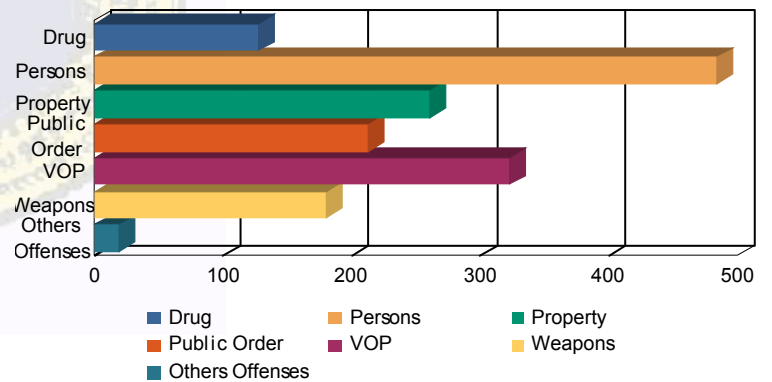
Special Education



Offense Categories

Drug	100 (7.69%)	7 (12.07%)	5 (5.38%)	1 (7.14%)	14 (10.14%)	0 (0.00%)	127 (7.90%)
Persons	382 (29.38%)	14 (24.14%)	48 (51.61%)	5 (35.71%)	34 (24.64%)	1 (25.00%)	484 (30.12%)
Property	224 (17.23%)	9 (15.52%)	6 (6.45%)	2 (14.29%)	20 (14.49%)	0 (0.00%)	261 (16.24%)
Public Order	173 (13.31%)	10 (17.24%)	11 (11.83%)	2 (14.29%)	17 (12.32%)	0 (0.00%)	213 (13.25%)
VOP	267 (20.54%)	12 (20.69%)	4 (4.30%)	2 (14.29%)	35 (25.36%)	3 (75.00%)	323 (20.10%)
Weapons	140 (10.77%)	5 (8.62%)	19 (20.43%)	1 (7.14%)	15 (10.87%)	0 (0.00%)	180 (11.20%)
Others Offenses	14 (1.08%)	1 (1.72%)	0 (0.00%)	1 (7.14%)	3 (2.17%)	0 (0.00%)	19 (1.18%)
Total *	1,300 (100.00%)	58 (100.00%)	93 (100.00%)	14 (100.00%)	138 (100.00%)	4 (100.00%)	1,607 (100.00%)

Offense Categories



* Juveniles may have multiple offenses