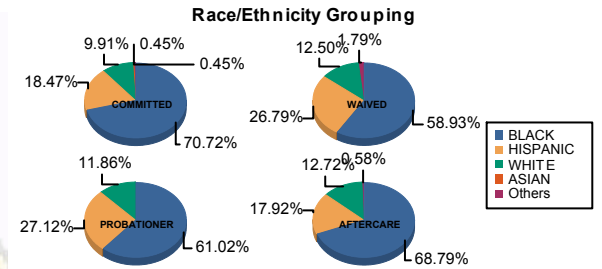




Juvenile Demographics and Statistics

Race/ Ethnicity	COMMITTED		WAIVED		PROBATIONER		AFTERCARE		Total									
	MALE	FEMALE	MALE	FEMALE	MALE	FEMALE	MALE	FEMALE										
BLACK	151	71.56%	6	54.55%	30	56.60%	3	100.00%	35	61.40%	1	50.00%	115	70.12%	4	44.44%	345	67.65%
HISPANIC	40	18.96%	1	9.09%	15	28.30%	0	0.00%	16	28.07%	0	0.00%	30	18.29%	1	11.11%	103	20.20%
WHITE	18	8.53%	4	36.36%	7	13.21%	0	0.00%	6	10.53%	1	50.00%	18	10.98%	4	44.44%	58	11.37%
ASIAN	1	0.47%	0	0.00%	0	0.00%	0	0.00%	0	0.00%	0	0.00%	0	0.00%	0	0.00%	1	0.20%
Others	1	0.47%	0	0.00%	1	1.89%	0	0.00%	0	0.00%	0	0.00%	1	0.61%	0	0.00%	3	0.59%
Total	211	100.00%	11	100.00%	53	100.00%	3	100.00%	57	100.00%	2	100.00%	164	100.00%	9	100.00%	510	100.00%



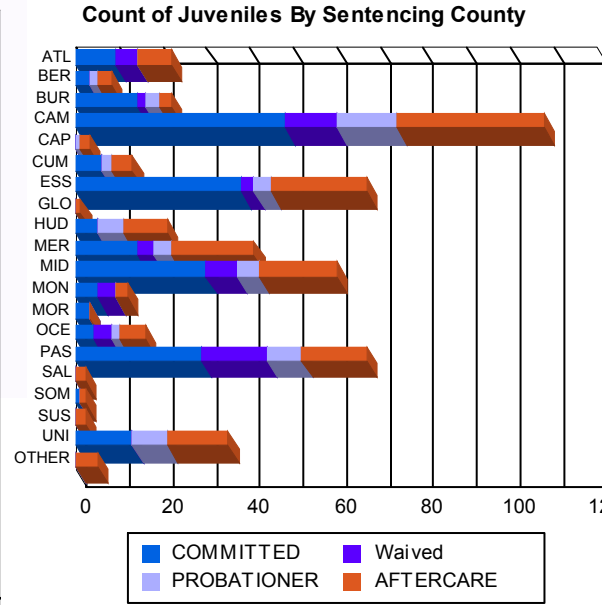
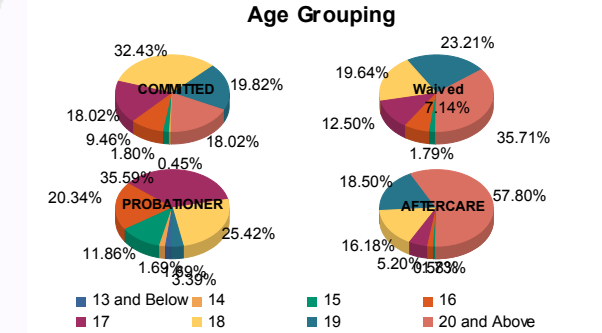
Age

13 and Below	0	0.00%	0	0.00%	0	0.00%	0	0.00%	1	1.75%	0	0.00%	0	0.00%	0	0.00%	1	0.20%
14	1	0.47%	0	0.00%	0	0.00%	0	0.00%	1	1.75%	0	0.00%	0	0.00%	0	0.00%	2	0.39%
15	4	1.90%	0	0.00%	1	1.89%	0	0.00%	7	12.28%	0	0.00%	1	0.61%	0	0.00%	13	2.55%
16	19	9.00%	2	18.18%	4	7.55%	0	0.00%	12	21.05%	0	0.00%	3	1.83%	0	0.00%	40	7.84%
17	36	17.06%	4	36.36%	7	13.21%	0	0.00%	21	36.84%	0	0.00%	9	5.49%	0	0.00%	77	15.10%
18	72	34.12%	0	0.00%	11	20.75%	0	0.00%	14	24.56%	1	50.00%	26	15.85%	2	22.22%	126	24.71%
19	41	19.43%	3	27.27%	12	22.64%	1	33.33%	1	1.75%	1	50.00%	32	19.51%	0	0.00%	91	17.84%
20 and Above	38	18.01%	2	18.18%	18	33.96%	2	66.67%	0	0.00%	0	0.00%	93	56.71%	7	77.78%	160	31.37%
Total	211	100.00%	11	100.00%	53	100.00%	3	100.00%	57	100.00%	2	100.00%	164	100.00%	9	100.00%	510	100.00%

Average Age	18.26	17.91	18.66	19.67	16.70	18.50	20.51	21.22	18.90
-------------	-------	-------	-------	-------	-------	-------	-------	-------	-------

Sentencing County

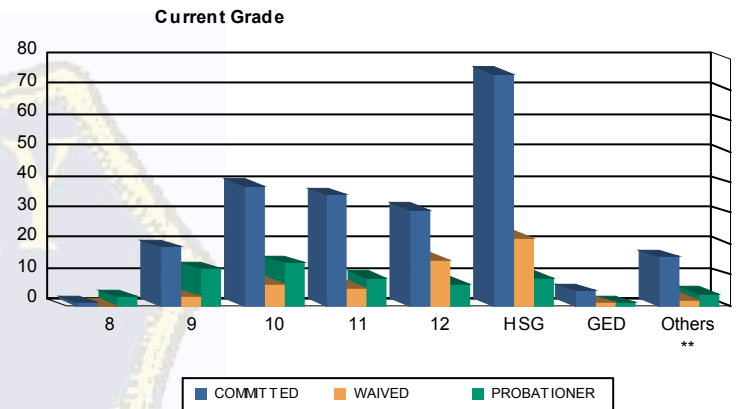
ATL	9	4.27%	0	0.00%	5	9.43%	0	0.00%	0	0.00%	0	0.00%	7	4.27%	1	11.11%	22	4.31%
BER	3	1.42%	0	0.00%	0	0.00%	0	0.00%	2	3.51%	0	0.00%	3	1.83%	0	0.00%	8	1.57%
BUR	13	6.16%	1	9.09%	2	3.77%	0	0.00%	3	5.26%	0	0.00%	2	1.22%	1	11.11%	22	4.31%
CAM	46	21.80%	2	18.18%	9	16.98%	3	100.00%	13	22.81%	1	50.00%	32	19.51%	2	22.22%	108	21.18%
CAP	0	0.00%	0	0.00%	0	0.00%	0	0.00%	1	1.75%	0	0.00%	2	1.22%	0	0.00%	3	0.59%
CUM	6	2.84%	0	0.00%	0	0.00%	0	0.00%	2	3.51%	0	0.00%	5	3.05%	0	0.00%	13	2.55%
ESS	38	18.01%	0	0.00%	3	5.66%	0	0.00%	4	7.02%	0	0.00%	20	12.20%	2	22.22%	67	13.14%
GLO	0	0.00%	0	0.00%	0	0.00%	0	0.00%	0	0.00%	0	0.00%	1	0.61%	0	0.00%	1	0.20%
HUD	5	2.37%	0	0.00%	0	0.00%	0	0.00%	6	10.53%	0	0.00%	10	6.10%	0	0.00%	21	4.12%
MER	14	6.64%	0	0.00%	4	7.55%	0	0.00%	4	7.02%	0	0.00%	19	11.59%	0	0.00%	41	8.04%
MID	26	12.32%	4	36.36%	7	13.21%	0	0.00%	5	8.77%	0	0.00%	18	10.98%	0	0.00%	60	11.76%
MON	5	2.37%	0	0.00%	4	7.55%	0	0.00%	0	0.00%	0	0.00%	3	1.83%	0	0.00%	12	2.35%
MOR	2	0.95%	1	9.09%	0	0.00%	0	0.00%	0	0.00%	0	0.00%	0	0.00%	0	0.00%	3	0.59%
OCE	4	1.90%	0	0.00%	4	7.55%	0	0.00%	2	3.51%	0	0.00%	6	3.66%	0	0.00%	16	3.14%
PAS	27	12.80%	2	18.18%	15	28.30%	0	0.00%	7	12.28%	1	50.00%	14	8.54%	1	11.11%	67	13.14%
SAL	0	0.00%	0	0.00%	0	0.00%	0	0.00%	0	0.00%	0	0.00%	2	1.22%	0	0.00%	2	0.39%
SOM	1	0.47%	0	0.00%	0	0.00%	0	0.00%	0	0.00%	0	0.00%	1	0.61%	0	0.00%	2	0.39%
SUS	0	0.00%	0	0.00%	0	0.00%	0	0.00%	0	0.00%	0	0.00%	1	0.61%	1	11.11%	2	0.39%
UNI	12	5.69%	1	9.09%	0	0.00%	0	0.00%	8	14.04%	0	0.00%	13	7.93%	1	11.11%	35	6.86%
OTHER	0	0.00%	0	0.00%	0	0.00%	0	0.00%	0	0.00%	0	0.00%	5	3.05%	0	0.00%	5	0.98%
Total	211	100.00%	11	100.00%	53	100.00%	3	100.00%	57	100.00%	2	100.00%	164	100.00%	9	100.00%	510	100.00%





Juvenile Demographics and Statistics

Current Grade	COMMITTED		WAIVED		PROBATIONER		Total
	MALE	FEMALE	MALE	FEMALE	MALE	FEMALE	
8	1 (0.47%)	0 0.00%	0 0.00%	0 0.00%	3 (5.26%)	0 0.00%	4 (1.19%)
9	17 (8.06%)	2 (18.18%)	3 (5.66%)	0 0.00%	12 (21.05%)	0 0.00%	34 (10.09%)
10	35 (16.59%)	4 (36.36%)	7 (13.21%)	0 0.00%	14 (24.56%)	0 0.00%	60 (17.80%)
11	35 (16.59%)	1 (9.09%)	6 (11.32%)	0 0.00%	9 (15.79%)	0 0.00%	51 (15.13%)
12	30 (14.22%)	1 (9.09%)	14 (26.42%)	1 (33.33%)	6 (10.53%)	1 (50.00%)	53 (15.73%)
HSG	72 (34.12%)	3 (27.27%)	20 (37.74%)	2 (66.67%)	8 (14.04%)	1 (50.00%)	106 (31.45%)
GED	5 (2.37%)	0 0.00%	1 (1.89%)	0 0.00%	1 (1.75%)	0 0.00%	7 (2.08%)
Others **	16 (7.58%)	0 0.00%	2 (3.77%)	0 0.00%	4 (7.02%)	0 0.00%	22 (6.53%)
Total	211 (100.00%)	11 (100.00%)	53 (100.00%)	3 (100.00%)	57 (100.00%)	2 (100.00%)	337 (100.00%)

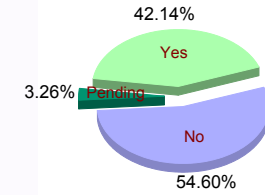


** Includes Aged Out Juveniles and Pending Records

Special Education Services

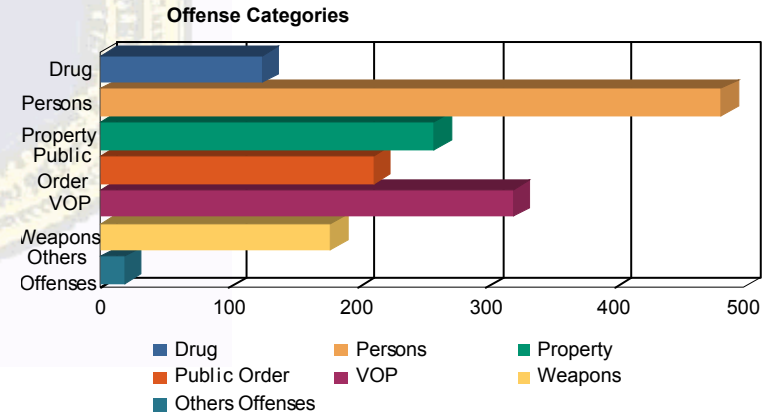
Yes	92 (43.60%)	3 (27.27%)	20 (37.74%)	2 (66.67%)	24 (42.11%)	1 (50.00%)	142 (42.14%)
No	113 (53.55%)	8 (72.73%)	31 (58.49%)	1 (33.33%)	30 (52.63%)	1 (50.00%)	184 (54.60%)
Pending	6 (2.84%)	0 0.00%	2 (3.77%)	0 0.00%	3 (5.26%)	0 0.00%	11 (3.26%)
Total	211 (100.00%)	11 (100.00%)	53 (100.00%)	3 (100.00%)	57 (100.00%)	2 (100.00%)	337 (100.00%)

Special Education



Offense Categories

Drug	100 (7.72%)	7 (11.48%)	5 (5.43%)	1 (7.14%)	13 (9.70%)	0 0.00%	126 (7.87%)
Persons	381 (29.40%)	15 (24.59%)	47 (51.09%)	5 (35.71%)	34 (25.37%)	1 (25.00%)	483 (30.17%)
Property	223 (17.21%)	9 (14.75%)	6 (6.52%)	2 (14.29%)	20 (14.93%)	0 0.00%	260 (16.24%)
Public Order	173 (13.35%)	11 (18.03%)	11 (11.96%)	2 (14.29%)	16 (11.94%)	0 0.00%	213 (13.30%)
VOP	265 (20.45%)	13 (21.31%)	4 (4.35%)	2 (14.29%)	34 (25.37%)	3 (75.00%)	321 (20.05%)
Weapons	140 (10.80%)	5 (8.20%)	19 (20.65%)	1 (7.14%)	14 (10.45%)	0 0.00%	179 (11.18%)
Others Offenses	14 (1.08%)	1 (1.64%)	0 0.00%	1 (7.14%)	3 (2.24%)	0 0.00%	19 (1.19%)
Total *	1,296 (100.00%)	61 (100.00%)	92 (100.00%)	14 (100.00%)	134 (100.00%)	4 (100.00%)	1,601 (100.00%)



* Juveniles may have multiple offenses