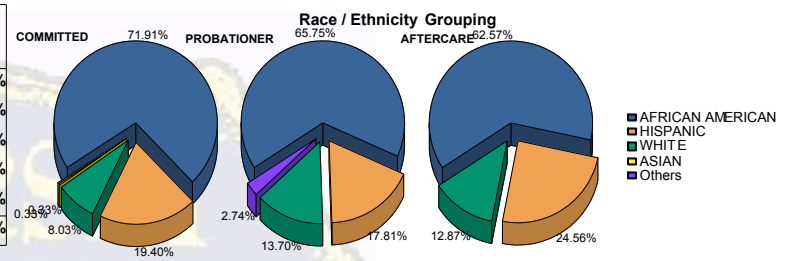




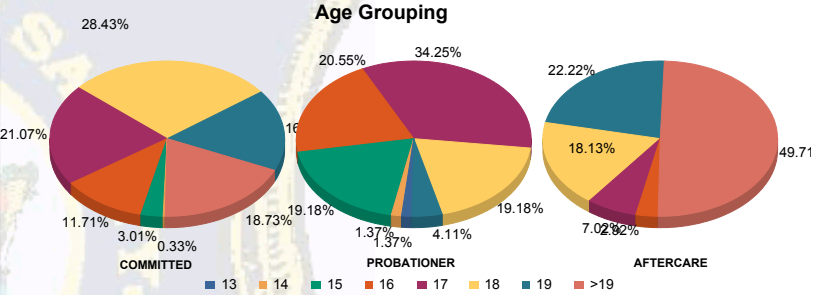
Juvenile Demographics and Statistics

Race/Ethnicity	COMMITTED		PROBATIONER		AFTERCARE		Total							
	MALE	FEMALE	MALE	FEMALE	MALE	FEMALE	MALE	FEMALE						
AFRICAN AMERICAN	205	72.44%	10	62.50%	45	70.31%	3	33.33%	103	63.98%	4	40.00%	370	68.14%
HISPANIC	56	19.79%	2	12.50%	11	17.19%	2	22.22%	39	24.22%	3	30.00%	113	20.81%
WHITE	20	7.07%	4	25.00%	6	9.38%	4	44.44%	19	11.80%	3	30.00%	56	10.31%
ASIAN	1	0.35%	0	0.00%	0	0.00%	0	0.00%	0	0.00%	0	0.00%	1	0.18%
Others	1	0.35%	0	0.00%	2	3.13%	0	0.00%	0	0.00%	0	0.00%	3	0.55%
Total	283	100.00%	16	100.00%	64	100.00%	9	100.00%	161	100.00%	10	100.00%	543	100.00%



Age	COMMITTED	PROBATIONER	AFTERCARE	Total
13	0	0	1	1
14	1	0	0	1
15	9	0	12	21
16	33	2	13	48
17	59	4	24	87
18	79	6	13	98
19	49	1	0	50
>19	53	3	0	56
Total	283	16	64	543

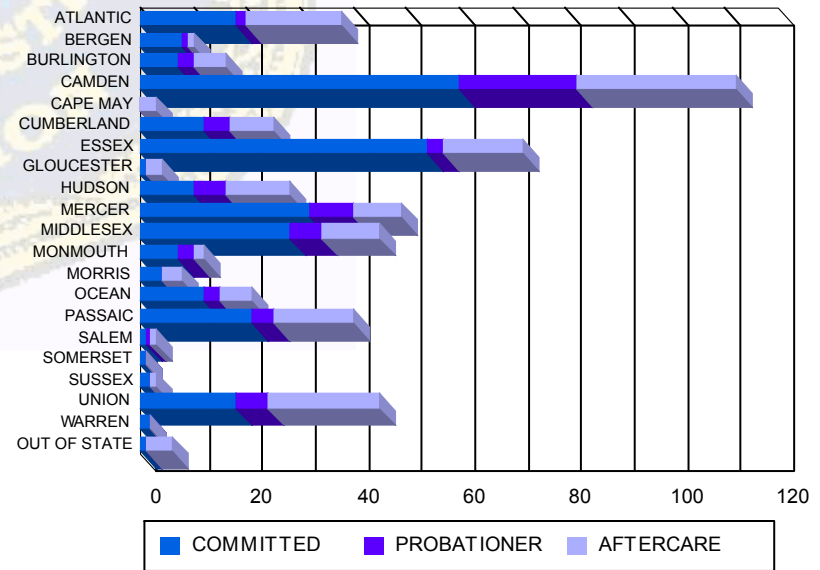
Average Age	COMMITTED	PROBATIONER	AFTERCARE	Total
Average Age	18.14	18.13	16.52	17.11



Sentencing County

Sentencing County	COMMITTED	PROBATIONER	AFTERCARE	Total
ATLANTIC	18	0	2	20
BERGEN	8	0	1	9
BURLINGTON	7	0	3	10
CAMDEN	53	7	16	76
CAPE MAY	0	0	0	0
CUMBERLAND	12	0	5	17
ESSEX	52	2	3	57
GLOUCESTER	0	1	0	1
HUDSON	9	1	6	16
MERCER	30	2	8	40
MIDDLESEX	28	0	5	33
MONMOUTH	7	0	3	10
MORRIS	3	1	0	4
OCEAN	12	0	3	15
PASSAIC	21	0	3	24
SALEM	1	0	1	2
SOMERSET	1	0	0	1
SUSSEX	2	0	0	2
UNION	16	2	5	23
WARREN	2	0	0	2
OUT OF STATE	1	0	0	1
Total	283	16	64	543

Count of Juveniles By Sentencing County





Juvenile Demographics and Statistics

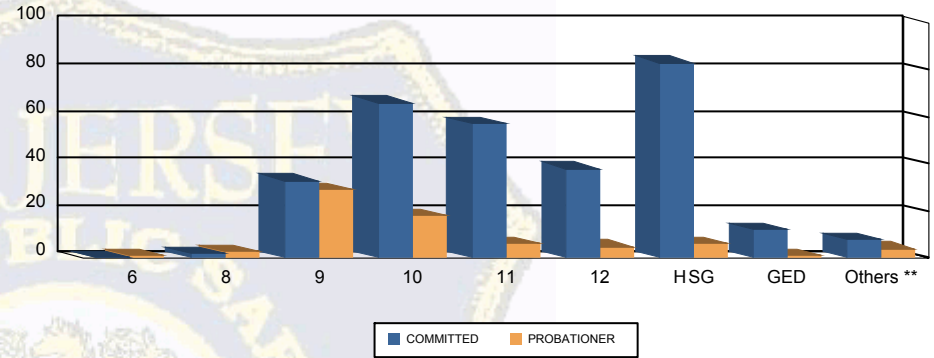
Current Grade	COMMITTED		PROBATIONER		Total	
	MALE	FEMALE	MALE	FEMALE		
6	0 (0.00%)	0 (0.00%)	1 (1.56%)	0 (0.00%)	1 (0.27%)	
8	2 (0.71%)	0 (0.00%)	3 (4.69%)	0 (0.00%)	5 (1.34%)	
9	30 (10.60%)	3 (18.75%)	26 (40.63%)	3 (33.33%)	62 (16.67%)	
10	62 (21.91%)	4 (25.00%)	17 (26.56%)	1 (11.11%)	84 (22.58%)	
11	54 (19.08%)	3 (18.75%)	5 (7.81%)	1 (11.11%)	63 (16.94%)	
12	37 (13.07%)	1 (6.25%)	4 (6.25%)	1 (11.11%)	43 (11.56%)	
HSG	79 (27.92%)	4 (25.00%)	4 (6.25%)	2 (22.22%)	89 (23.92%)	
GED	11 (3.89%)	1 (6.25%)	1 (1.56%)	0 (0.00%)	13 (3.49%)	
Others **	8 (2.83%)	0 (0.00%)	3 (4.69%)	1 (11.11%)	12 (3.23%)	
Total	283 (100.00%)	16 (100.00%)	64 (100.00%)	9 (100.00%)	372 (100.00%)	

** Includes Aged Out Juveniles and Pending Records

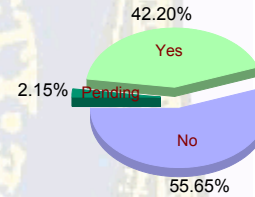
Special Education Services

Yes	116 (40.99%)	10 (62.50%)	30 (46.88%)	1 (11.11%)	157 (42.20%)
No	162 (57.24%)	6 (37.50%)	31 (48.44%)	8 (88.89%)	207 (55.65%)
Pending	5 (1.77%)	0 (0.00%)	3 (4.69%)	0 (0.00%)	8 (2.15%)
Total	283 (100.00%)	16 (100.00%)	64 (100.00%)	9 (100.00%)	372 (100.00%)

Current Grade



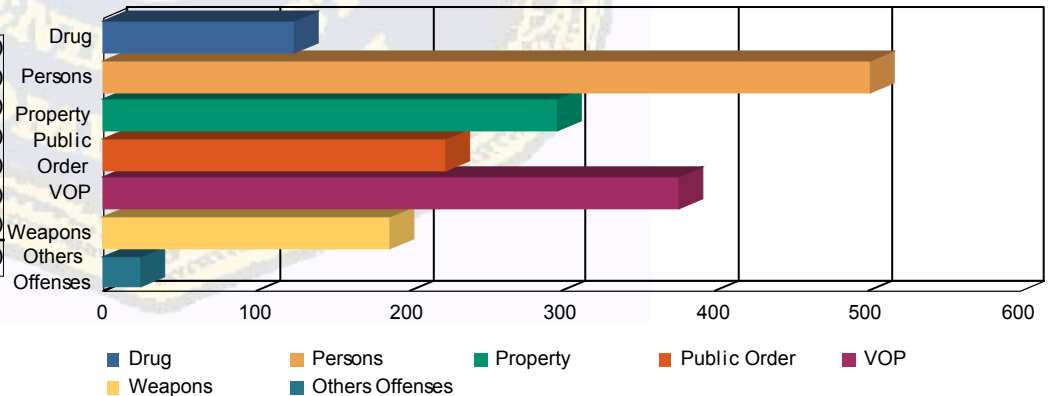
Special Education



Offense Categories

Offense Categories

Drug	102 (7.07%)	5 (6.25%)	15 (7.98%)	3 (11.11%)	125 (7.20%)
Persons	431 (29.89%)	18 (22.50%)	48 (25.53%)	5 (18.52%)	502 (28.90%)
Property	256 (17.75%)	16 (20.00%)	24 (12.77%)	1 (3.70%)	297 (17.10%)
Public Order	178 (12.34%)	14 (17.50%)	25 (13.30%)	7 (25.93%)	224 (12.90%)
VOP	298 (20.67%)	19 (23.75%)	51 (27.13%)	9 (33.33%)	377 (21.70%)
Weapons	159 (11.03%)	7 (8.75%)	20 (10.64%)	2 (7.41%)	188 (10.82%)
Others Offenses	18 (1.25%)	1 (1.25%)	5 (2.66%)	0 (0.00%)	24 (1.38%)
Total *	1,442 (100.00%)	80 (100.00%)	188 (100.00%)	27 (100.00%)	1,737 (100.00%)



* Juveniles may have multiple offenses