



Juvenile Demographics and Statistics

Race/ Ethnicity	COMMITTED		WAIVED		PROBATIONER		AFTERCARE		Total									
	MALE	FEMALE	MALE	FEMALE	MALE	FEMALE	MALE	FEMALE										
BLACK	146	74.11%	6	50.00%	28	52.83%	3	100.00%	32	60.38%	1	50.00%	121	70.35%	4	44.44%	341	68.06%
HISPANIC	32	16.24%	1	8.33%	16	30.19%	0	0.00%	16	30.19%	0	0.00%	33	19.19%	1	11.11%	99	19.76%
WHITE	19	9.64%	5	41.67%	8	15.09%	0	0.00%	5	9.43%	1	50.00%	17	9.88%	4	44.44%	59	11.78%
Others	0	0.00%	0	0.00%	1	1.89%	0	0.00%	0	0.00%	0	0.00%	1	0.58%	0	0.00%	2	0.40%
Total	197	100.00%	12	100.00%	53	100.00%	3	100.00%	53	100.00%	2	100.00%	172	100.00%	9	100.00%	501	100.00%

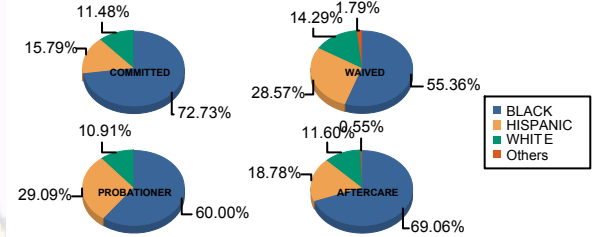
Age

13 and Below	0	0.00%	0	0.00%	0	0.00%	0	0.00%	2	3.77%	0	0.00%	0	0.00%	0	0.00%	2	0.40%
14	1	0.51%	0	0.00%	0	0.00%	0	0.00%	1	1.89%	0	0.00%	0	0.00%	0	0.00%	2	0.40%
15	4	2.03%	0	0.00%	1	1.89%	0	0.00%	7	13.21%	0	0.00%	1	0.58%	0	0.00%	13	2.59%
16	19	9.64%	3	25.00%	3	5.66%	0	0.00%	11	20.75%	0	0.00%	4	2.33%	0	0.00%	40	7.98%
17	28	14.21%	2	16.67%	7	13.21%	0	0.00%	16	30.19%	0	0.00%	9	5.23%	0	0.00%	62	12.38%
18	69	35.03%	2	16.67%	12	22.64%	0	0.00%	16	30.19%	1	50.00%	27	15.70%	1	11.11%	128	25.55%
19	38	19.29%	3	25.00%	13	24.53%	1	33.33%	0	0.00%	1	50.00%	37	21.51%	1	11.11%	94	18.76%
20 and Above	38	19.29%	2	16.67%	17	32.08%	2	66.67%	0	0.00%	0	0.00%	94	54.65%	7	77.78%	160	31.94%
Total	197	100.00%	12	100.00%	53	100.00%	3	100.00%	53	100.00%	2	100.00%	172	100.00%	9	100.00%	501	100.00%
Average Age	18.33		17.92		18.70		19.67		16.62		18.50		20.38		21.33		18.95	

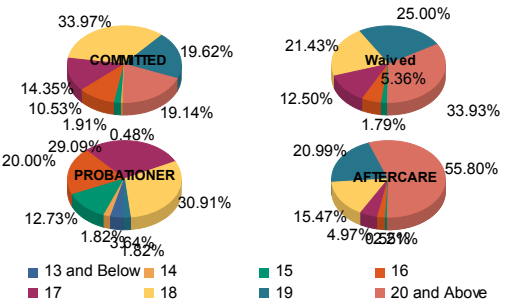
Sentencing County

ATL	10	5.08%	0	0.00%	6	11.32%	0	0.00%	0	0.00%	0	0.00%	6	3.49%	1	11.11%	23	4.59%
BER	3	1.52%	0	0.00%	0	0.00%	0	0.00%	2	3.77%	0	0.00%	3	1.74%	0	0.00%	8	1.60%
BUR	9	4.57%	1	8.33%	2	3.77%	0	0.00%	3	5.66%	0	0.00%	3	1.74%	1	11.11%	19	3.79%
CAM	44	22.34%	2	16.67%	8	15.09%	3	100.00%	12	22.64%	1	50.00%	37	21.51%	2	22.22%	109	21.76%
CAP	0	0.00%	0	0.00%	0	0.00%	0	0.00%	1	1.89%	0	0.00%	2	1.16%	0	0.00%	3	0.60%
CUM	5	2.54%	0	0.00%	0	0.00%	0	0.00%	2	3.77%	0	0.00%	5	2.91%	0	0.00%	12	2.40%
ESS	37	18.78%	0	0.00%	3	5.66%	0	0.00%	3	5.66%	0	0.00%	20	11.63%	2	22.22%	65	12.97%
GLO	0	0.00%	0	0.00%	0	0.00%	0	0.00%	0	0.00%	0	0.00%	1	0.58%	0	0.00%	1	0.20%
HUD	4	2.03%	0	0.00%	0	0.00%	0	0.00%	7	13.21%	0	0.00%	10	5.81%	0	0.00%	21	4.19%
HUN	1	0.51%	0	0.00%	0	0.00%	0	0.00%	0	0.00%	0	0.00%	0	0.00%	0	0.00%	1	0.20%
MER	14	7.11%	0	0.00%	4	7.55%	0	0.00%	2	3.77%	0	0.00%	19	11.05%	0	0.00%	39	7.78%
MID	22	11.17%	4	33.33%	8	15.09%	0	0.00%	3	5.66%	0	0.00%	18	10.47%	0	0.00%	55	10.98%
MON	4	2.03%	0	0.00%	4	7.55%	0	0.00%	0	0.00%	0	0.00%	4	2.33%	0	0.00%	12	2.40%
MOR	2	1.02%	1	8.33%	0	0.00%	0	0.00%	0	0.00%	0	0.00%	0	0.00%	0	0.00%	3	0.60%
OCE	3	1.52%	0	0.00%	4	7.55%	0	0.00%	1	1.89%	0	0.00%	7	4.07%	0	0.00%	15	2.99%
PAS	25	12.69%	2	16.67%	14	26.42%	0	0.00%	8	15.09%	1	50.00%	16	9.30%	1	11.11%	67	13.37%
SAL	0	0.00%	0	0.00%	0	0.00%	0	0.00%	0	0.00%	0	0.00%	2	1.16%	0	0.00%	2	0.40%
SOM	1	0.51%	0	0.00%	0	0.00%	0	0.00%	0	0.00%	0	0.00%	1	0.58%	0	0.00%	2	0.40%
SUS	0	0.00%	0	0.00%	0	0.00%	0	0.00%	0	0.00%	0	0.00%	1	0.58%	1	11.11%	2	0.40%
UNI	13	6.60%	2	16.67%	0	0.00%	0	0.00%	9	16.98%	0	0.00%	12	6.98%	1	11.11%	37	7.39%
OTHER	0	0.00%	0	0.00%	0	0.00%	0	0.00%	0	0.00%	0	0.00%	5	2.91%	0	0.00%	5	1.00%
Total	197	100.00%	12	100.00%	53	100.00%	3	100.00%	53	100.00%	2	100.00%	172	100.00%	9	100.00%	501	100.00%

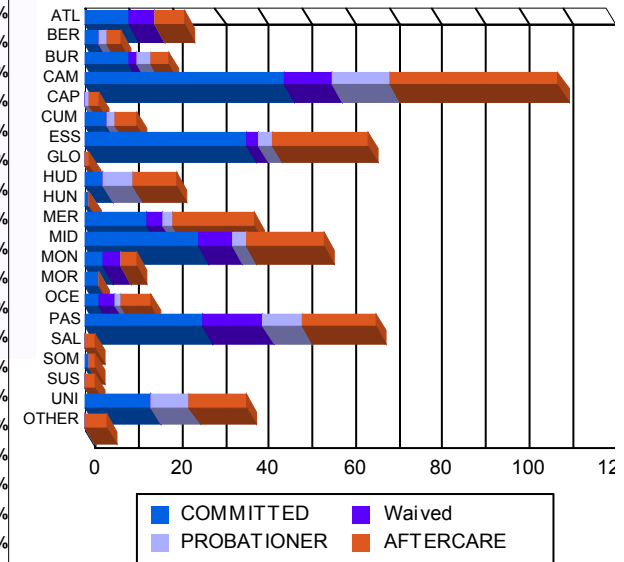
Race/Ethnicity Grouping



Age Grouping



Count of Juveniles By Sentencing County





Juvenile Demographics and Statistics

Current Grade	COMMITTED		WAIVED		PROBATIONER		Total
	MALE	FEMALE	MALE	FEMALE	MALE	FEMALE	
7	0 (0.00%)	0 (0.00%)	0 (0.00%)	0 (0.00%)	1 (1.89%)	0 (0.00%)	1 (0.31%)
8	1 (0.51%)	0 (0.00%)	0 (0.00%)	0 (0.00%)	2 (3.77%)	0 (0.00%)	3 (0.94%)
9	19 (9.64%)	2 (16.67%)	4 (7.55%)	0 (0.00%)	12 (22.64%)	0 (0.00%)	37 (11.56%)
10	37 (18.78%)	4 (33.33%)	6 (11.32%)	0 (0.00%)	18 (33.96%)	0 (0.00%)	65 (20.31%)
11	31 (15.74%)	2 (16.67%)	7 (13.21%)	0 (0.00%)	6 (11.32%)	0 (0.00%)	46 (14.38%)
12	25 (12.69%)	1 (8.33%)	13 (24.53%)	0 (0.00%)	5 (9.43%)	1 (50.00%)	45 (14.06%)
HSG	67 (34.01%)	3 (25.00%)	22 (41.51%)	3 (100.00%)	7 (13.21%)	1 (50.00%)	103 (32.19%)
GED	5 (2.54%)	0 (0.00%)	1 (1.89%)	0 (0.00%)	1 (1.89%)	0 (0.00%)	7 (2.19%)
Others **	12 (6.09%)	0 (0.00%)	0 (0.00%)	0 (0.00%)	1 (1.89%)	0 (0.00%)	13 (4.06%)
Total	197 (100.00%)	12 (100.00%)	53 (100.00%)	3 (100.00%)	53 (100.00%)	2 (100.00%)	320 (100.00%)

** Includes Aged Out Juveniles and Pending Records

Special Education Services

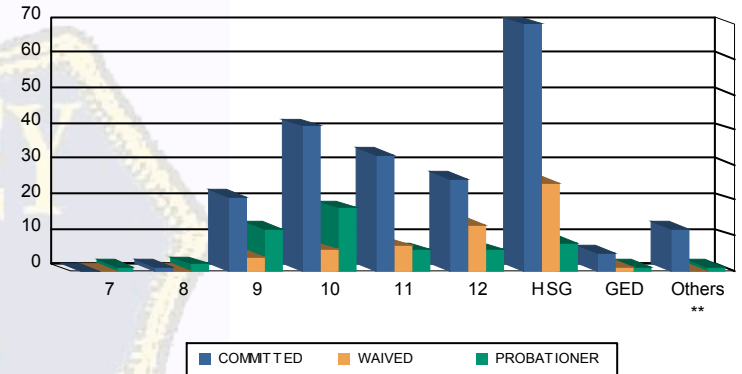
Yes	86 (43.65%)	3 (25.00%)	21 (39.62%)	2 (66.67%)	25 (47.17%)	1 (50.00%)	138 (43.13%)
No	110 (55.84%)	9 (75.00%)	32 (60.38%)	1 (33.33%)	27 (50.94%)	1 (50.00%)	180 (56.25%)
Pending	1 (0.51%)	0 (0.00%)	0 (0.00%)	0 (0.00%)	1 (1.89%)	0 (0.00%)	2 (0.63%)
Total	197 (100.00%)	12 (100.00%)	53 (100.00%)	3 (100.00%)	53 (100.00%)	2 (100.00%)	320 (100.00%)

Offense Categories

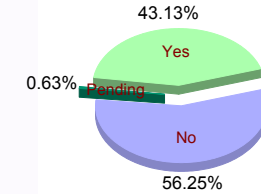
Drug	103 (8.06%)	7 (10.45%)	5 (5.15%)	1 (7.14%)	12 (9.16%)	0 (0.00%)	128 (8.05%)
Persons	373 (29.19%)	15 (22.39%)	49 (50.52%)	5 (35.71%)	30 (22.90%)	1 (25.00%)	473 (29.73%)
Property	217 (16.98%)	11 (16.42%)	7 (7.22%)	2 (14.29%)	21 (16.03%)	0 (0.00%)	258 (16.22%)
Public Order	169 (13.22%)	13 (19.40%)	12 (12.37%)	2 (14.29%)	16 (12.21%)	0 (0.00%)	212 (13.32%)
VOP	260 (20.34%)	15 (22.39%)	6 (6.19%)	2 (14.29%)	33 (25.19%)	3 (75.00%)	319 (20.05%)
Weapons	143 (11.19%)	5 (7.46%)	17 (17.53%)	1 (7.14%)	16 (12.21%)	0 (0.00%)	182 (11.44%)
Others Offenses	13 (1.02%)	1 (1.49%)	1 (1.03%)	1 (7.14%)	3 (2.29%)	0 (0.00%)	19 (1.19%)
Total *	1,278 (100.00%)	67 (100.00%)	97 (100.00%)	14 (100.00%)	131 (100.00%)	4 (100.00%)	1,591 (100.00%)

* Juveniles may have multiple offenses

Current Grade



Special Education



Offense Categories

