



NJ Office of the Attorney General Juvenile Justice Commission



*Statistics are for Friday, August 17, 2018

Juvenile Demographics and Statistics

Race/ Ethnicity	COMMITTED		WAIVED		PROBATIONER		AFTERCARE		Total									
	MALE	FEMALE	MALE	FEMALE	MALE	FEMALE	MALE	FEMALE										
BLACK	156	71.23%	4	44.44%	22	56.41%	1	100.00%	30	61.22%	1	33.33%	98	63.64%	4	44.44%	316	65.42%
HISPANIC	39	17.81%	2	22.22%	12	30.77%	0	0.00%	7	14.29%	1	33.33%	34	22.08%	2	22.22%	97	20.08%
WHITE	22	10.05%	3	33.33%	5	12.82%	0	0.00%	12	24.49%	1	33.33%	21	13.64%	3	33.33%	67	13.87%
ASIAN	0	0.00%	0	0.00%	0	0.00%	0	0.00%	0	0.00%	0	0.00%	1	0.65%	0	0.00%	1	0.21%
Others	2	0.91%	0	0.00%	0	0.00%	0	0.00%	0	0.00%	0	0.00%	0	0.00%	0	0.00%	2	0.41%
Total	219	100.00%	9	100.00%	39	100.00%	1	100.00%	49	100.00%	3	100.00%	154	100.00%	9	100.00%	483	100.00%

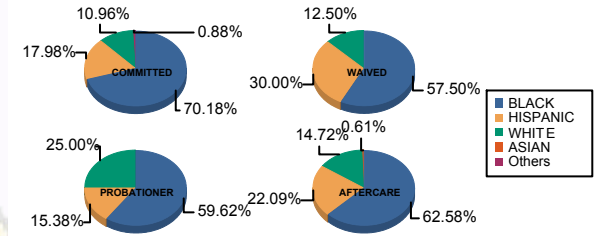
Age

13 and Below	1	0.46%	0	0.00%	0	0.00%	0	0.00%	0	0.00%	0	0.00%	0	0.00%	0	0.00%	1	0.21%
14	0	0.00%	0	0.00%	0	0.00%	0	0.00%	3	6.12%	0	0.00%	0	0.00%	0	0.00%	3	0.62%
15	7	3.20%	0	0.00%	0	0.00%	0	0.00%	3	6.12%	0	0.00%	0	0.00%	0	0.00%	10	2.07%
16	12	5.48%	0	0.00%	0	0.00%	0	0.00%	10	20.41%	1	33.33%	3	1.95%	1	11.11%	27	5.59%
17	44	20.09%	2	22.22%	5	12.82%	0	0.00%	19	38.78%	1	33.33%	11	7.14%	1	11.11%	83	17.18%
18	66	30.14%	3	33.33%	6	15.38%	0	0.00%	12	24.49%	1	33.33%	27	17.53%	1	11.11%	116	24.02%
19	43	19.63%	2	22.22%	17	43.59%	1	100.00%	2	4.08%	0	0.00%	34	22.08%	1	11.11%	100	20.70%
20 and Above	46	21.00%	2	22.22%	11	28.21%	0	0.00%	0	0.00%	0	0.00%	79	51.30%	5	55.56%	143	29.61%
Total	219	100.00%	9	100.00%	39	100.00%	1	100.00%	49	100.00%	3	100.00%	154	100.00%	9	100.00%	483	100.00%
Average Age	18.35		18.67		18.92		19.00		16.82		17.00		20.36		19.56		18.90	

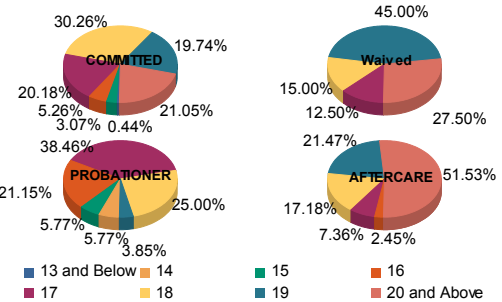
Sentencing County

ATL	10	4.57%	0	0.00%	5	12.82%	0	0.00%	0	0.00%	0	0.00%	11	7.14%	1	11.11%	27	5.59%
BER	7	3.20%	0	0.00%	1	2.56%	0	0.00%	1	2.04%	0	0.00%	3	1.95%	0	0.00%	12	2.48%
BUR	7	3.20%	2	22.22%	1	2.56%	0	0.00%	1	2.04%	0	0.00%	6	3.90%	1	11.11%	18	3.73%
CAM	47	21.46%	3	33.33%	5	12.82%	1	100.00%	8	16.33%	3	100.00%	29	18.83%	2	22.22%	98	20.29%
CAP	1	0.46%	0	0.00%	0	0.00%	0	0.00%	1	2.04%	0	0.00%	1	0.65%	0	0.00%	3	0.62%
CUM	8	3.65%	0	0.00%	0	0.00%	0	0.00%	4	8.16%	0	0.00%	5	3.25%	0	0.00%	17	3.52%
ESS	41	18.72%	0	0.00%	2	5.13%	0	0.00%	4	8.16%	0	0.00%	12	7.79%	1	11.11%	60	12.42%
GLO	1	0.46%	0	0.00%	0	0.00%	0	0.00%	0	0.00%	0	0.00%	0	0.00%	0	0.00%	1	0.21%
HUD	5	2.28%	0	0.00%	1	2.56%	0	0.00%	6	12.24%	0	0.00%	9	5.84%	0	0.00%	21	4.35%
MER	20	9.13%	2	22.22%	3	7.69%	0	0.00%	2	4.08%	0	0.00%	17	11.04%	1	11.11%	45	9.32%
MID	24	10.96%	2	22.22%	5	12.82%	0	0.00%	6	12.24%	0	0.00%	11	7.14%	0	0.00%	48	9.94%
MON	4	1.83%	0	0.00%	2	5.13%	0	0.00%	1	2.04%	0	0.00%	3	1.95%	0	0.00%	10	2.07%
MOR	4	1.83%	0	0.00%	0	0.00%	0	0.00%	0	0.00%	0	0.00%	2	1.30%	0	0.00%	6	1.24%
OCE	7	3.20%	0	0.00%	5	12.82%	0	0.00%	4	8.16%	0	0.00%	8	5.19%	0	0.00%	24	4.97%
PAS	18	8.22%	0	0.00%	9	23.08%	0	0.00%	4	8.16%	0	0.00%	19	12.34%	1	11.11%	51	10.56%
SAL	1	0.46%	0	0.00%	0	0.00%	0	0.00%	2	4.08%	0	0.00%	1	0.65%	0	0.00%	4	0.83%
SOM	1	0.46%	0	0.00%	0	0.00%	0	0.00%	0	0.00%	0	0.00%	1	0.65%	0	0.00%	2	0.41%
SUS	2	0.91%	0	0.00%	0	0.00%	0	0.00%	0	0.00%	0	0.00%	0	0.00%	1	11.11%	3	0.62%
UNI	11	5.02%	0	0.00%	0	0.00%	0	0.00%	5	10.20%	0	0.00%	11	7.14%	1	11.11%	28	5.80%
WAR	0	0.00%	0	0.00%	0	0.00%	0	0.00%	0	0.00%	0	0.00%	1	0.65%	0	0.00%	1	0.21%
OTHER	0	0.00%	0	0.00%	0	0.00%	0	0.00%	0	0.00%	0	0.00%	4	2.60%	0	0.00%	4	0.83%
Total	219	100.00%	9	100.00%	39	100.00%	1	100.00%	49	100.00%	3	100.00%	154	100.00%	9	100.00%	483	100.00%

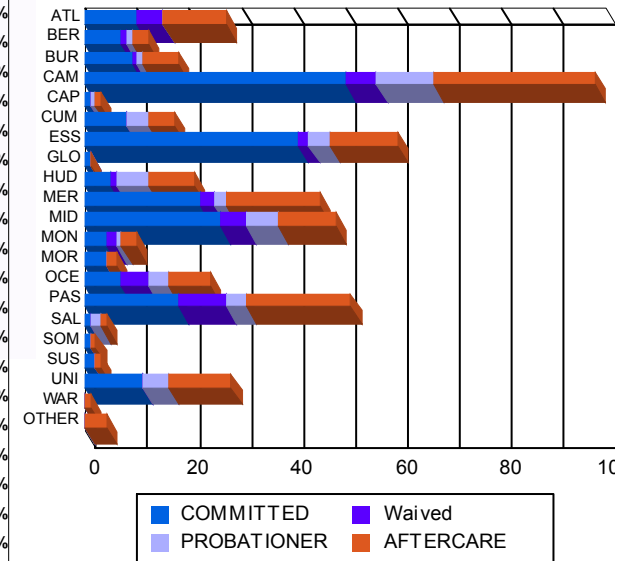
Race/Ethnicity Grouping



Age Grouping



Count of Juveniles By Sentencing County





Juvenile Demographics and Statistics

Current Grade	COMMITTED		WAIVED		PROBATIONER		Total
	MALE	FEMALE	MALE	FEMALE	MALE	FEMALE	
7	1 (0.46%)	0 0.00%	0 0.00%	0 0.00%	1 (2.04%)	0 0.00%	2 (0.63%)
8	0 0.00%	0 0.00%	0 0.00%	0 0.00%	1 (2.04%)	0 0.00%	1 (0.31%)
9	22 (10.05%)	1 (11.11%)	1 (2.56%)	0 0.00%	9 (18.37%)	0 0.00%	33 (10.31%)
10	33 (15.07%)	3 (33.33%)	5 (12.82%)	0 0.00%	17 (34.69%)	0 0.00%	58 (18.13%)
11	36 (16.44%)	2 (22.22%)	4 (10.26%)	0 0.00%	12 (24.49%)	1 (33.33%)	55 (17.19%)
12	31 (14.16%)	1 (11.11%)	7 (17.95%)	0 0.00%	3 (6.12%)	0 0.00%	42 (13.13%)
HSG	86 (39.27%)	0 0.00%	21 (53.85%)	1 (100.00%)	4 (8.16%)	1 (33.33%)	113 (35.31%)
GED	6 (2.74%)	0 0.00%	0 0.00%	0 0.00%	0 0.00%	0 0.00%	6 (1.88%)
Others **	4 (1.83%)	2 (22.22%)	1 (2.56%)	0 0.00%	2 (4.08%)	1 (33.33%)	10 (3.13%)
Total	219 (100.00%)	9 (100.00%)	39 (100.00%)	1 (100.00%)	49 (100.00%)	3 (100.00%)	320 (100.00%)

** Includes Aged Out Juveniles and Pending Records

Special Education Services

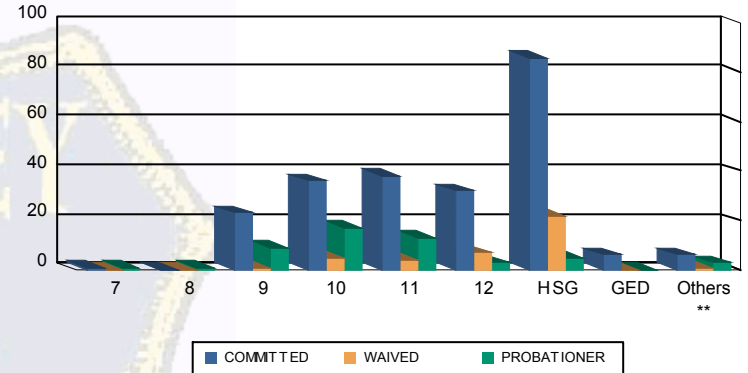
Yes	108 (49.32%)	4 (44.44%)	10 (25.64%)	1 (100.00%)	24 (48.98%)	0 0.00%	147 (45.94%)
No	111 (50.68%)	5 (55.56%)	29 (74.36%)	0 0.00%	24 (48.98%)	3 (100.00%)	172 (53.75%)
Pending	0 0.00%	0 0.00%	0 0.00%	0 0.00%	1 (2.04%)	0 0.00%	1 (0.31%)
Total	219 (100.00%)	9 (100.00%)	39 (100.00%)	1 (100.00%)	49 (100.00%)	3 (100.00%)	320 (100.00%)

Offense Categories

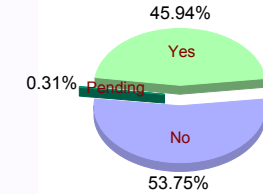
Drug	79 (6.26%)	5 (10.42%)	5 (7.81%)	1 (9.09%)	18 (10.98%)	0 0.00%	108 (6.93%)
Persons	375 (29.74%)	14 (29.17%)	32 (50.00%)	3 (27.27%)	34 (20.73%)	3 (27.27%)	461 (29.57%)
Property	224 (17.76%)	7 (14.58%)	4 (6.25%)	2 (18.18%)	30 (18.29%)	1 (9.09%)	268 (17.19%)
Public Order	164 (13.01%)	8 (16.67%)	6 (9.38%)	2 (18.18%)	20 (12.20%)	3 (27.27%)	203 (13.02%)
VOP	265 (21.02%)	9 (18.75%)	2 (3.13%)	2 (18.18%)	44 (26.83%)	3 (27.27%)	325 (20.85%)
Weapons	140 (11.10%)	4 (8.33%)	15 (23.44%)	0 0.00%	17 (10.37%)	0 0.00%	176 (11.29%)
Others Offenses	14 (1.11%)	1 (2.08%)	0 0.00%	1 (9.09%)	1 (0.61%)	1 (9.09%)	18 (1.15%)
Total *	1,261 (100.00%)	48 (100.00%)	64 (100.00%)	11 (100.00%)	164 (100.00%)	11 (100.00%)	1,559 (100.00%)

* Juveniles may have multiple offenses

Current Grade



Special Education



Offense Categories

