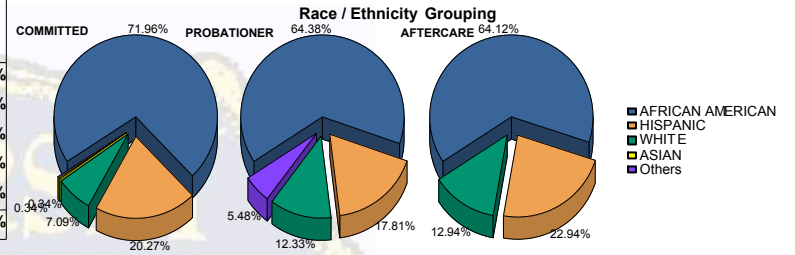


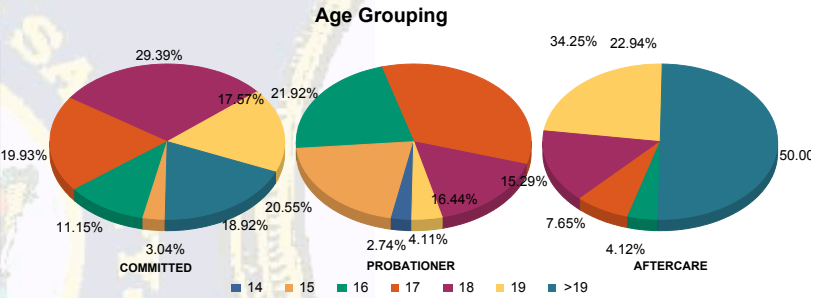


Juvenile Demographics and Statistics

Race/Ethnicity	COMMITTED		PROBATIONER		AFTERCARE		Total							
	MALE	FEMALE	MALE	FEMALE	MALE	FEMALE								
AFRICAN AMERICAN	203	71.99%	10	71.43%	45	68.18%	2	28.57%	105	66.04%	4	36.36%	369	68.46%
HISPANIC	59	20.92%	1	7.14%	12	18.18%	1	14.29%	35	22.01%	4	36.36%	112	20.78%
WHITE	18	6.38%	3	21.43%	5	7.58%	4	57.14%	19	11.95%	3	27.27%	52	9.65%
ASIAN	1	0.35%	0	0.00%	0	0.00%	0	0.00%	0	0.00%	0	0.00%	1	0.19%
Others	1	0.35%	0	0.00%	4	6.06%	0	0.00%	0	0.00%	0	0.00%	5	0.93%
Total	282	100.00%	14	100.00%	66	100.00%	7	100.00%	159	100.00%	11	100.00%	539	100.00%



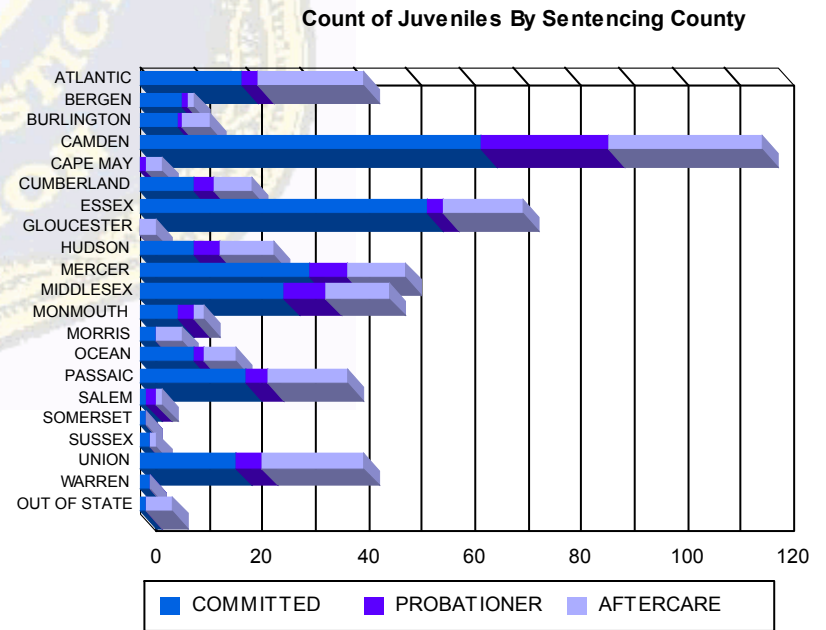
Age	COMMITTED	PROBATIONER	AFTERCARE	Total										
14	0	0.00%	2	3.03%	0	0.00%	0	0.00%	0	0.00%	2	0.37%		
15	9	3.19%	0	0.00%	13	19.70%	0	0.00%	0	0.00%	24	4.45%		
16	31	10.99%	2	14.29%	16	24.24%	0	0.00%	7	4.40%	56	10.39%		
17	56	19.86%	3	21.43%	24	36.36%	1	14.29%	11	6.92%	97	18.00%		
18	82	29.08%	5	35.71%	11	16.67%	1	14.29%	25	15.72%	1	9.09%	125	23.19%
19	51	18.09%	1	7.14%	0	0.00%	3	42.86%	38	23.90%	1	9.09%	94	17.44%
>19	53	18.79%	3	21.43%	0	0.00%	0	0.00%	78	49.06%	7	63.64%	141	26.16%
Total	282	100.00%	14	100.00%	66	100.00%	7	100.00%	159	100.00%	11	100.00%	539	100.00%



Average Age	COMMITTED	PROBATIONER	AFTERCARE	Total			
Average Age	18.20	18.21	16.44	17.43	20.09	20.09	18.57

Sentencing County

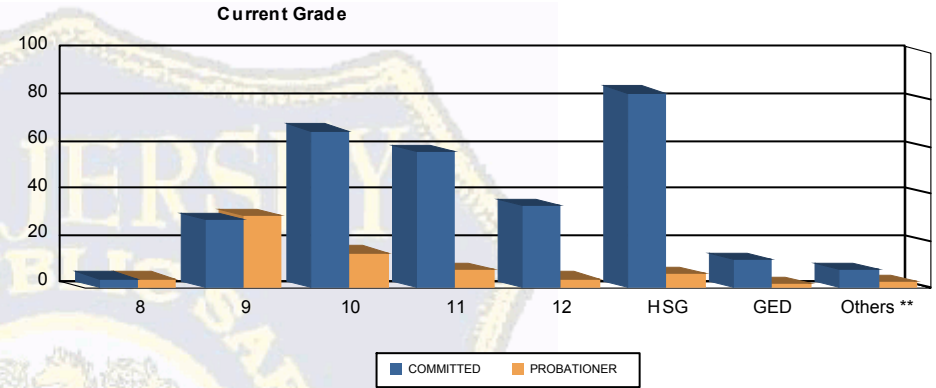
Sentencing County	COMMITTED	PROBATIONER	AFTERCARE	Total										
ATLANTIC	19	6.74%	0	0.00%	3	4.55%	0	0.00%	18	11.32%	2	18.18%	42	7.79%
BERGEN	8	2.84%	0	0.00%	1	1.52%	0	0.00%	1	0.63%	0	0.00%	10	1.86%
BURLINGTON	7	2.48%	0	0.00%	1	1.52%	0	0.00%	5	3.14%	0	0.00%	13	2.41%
CAMDEN	57	20.21%	7	50.00%	19	28.79%	5	71.43%	28	17.61%	1	9.09%	117	21.71%
CAPE MAY	0	0.00%	0	0.00%	1	1.52%	0	0.00%	2	1.26%	1	9.09%	4	0.74%
CUMBERLAND	10	3.55%	0	0.00%	4	6.06%	0	0.00%	6	3.77%	1	9.09%	21	3.90%
ESSEX	51	18.09%	3	21.43%	3	4.55%	0	0.00%	15	9.43%	0	0.00%	72	13.36%
GLOUCESTER	0	0.00%	0	0.00%	0	0.00%	0	0.00%	3	1.89%	0	0.00%	3	0.56%
HUDSON	9	3.19%	1	7.14%	5	7.58%	0	0.00%	10	6.29%	0	0.00%	25	4.64%
MERCER	30	10.64%	2	14.29%	7	10.61%	0	0.00%	10	6.29%	1	9.09%	50	9.28%
MIDDLESEX	27	9.57%	0	0.00%	7	10.61%	1	14.29%	11	6.92%	1	9.09%	47	8.72%
MONMOUTH	7	2.48%	0	0.00%	3	4.55%	0	0.00%	2	1.26%	0	0.00%	12	2.23%
MORRIS	3	1.06%	0	0.00%	0	0.00%	0	0.00%	4	2.52%	1	9.09%	8	1.48%
OCEAN	10	3.55%	0	0.00%	2	3.03%	0	0.00%	6	3.77%	0	0.00%	18	3.34%
PASSAIC	20	7.09%	0	0.00%	3	4.55%	1	14.29%	14	8.81%	1	9.09%	39	7.24%
SALEM	1	0.35%	0	0.00%	2	3.03%	0	0.00%	1	0.63%	0	0.00%	4	0.74%
SOMERSET	1	0.35%	0	0.00%	0	0.00%	0	0.00%	0	0.00%	0	0.00%	1	0.19%
SUSSEX	2	0.71%	0	0.00%	0	0.00%	0	0.00%	0	0.00%	1	9.09%	3	0.56%
UNION	17	6.03%	1	7.14%	5	7.58%	0	0.00%	18	11.32%	1	9.09%	42	7.79%
WARREN	2	0.71%	0	0.00%	0	0.00%	0	0.00%	0	0.00%	0	0.00%	2	0.37%
OUT OF STATE	1	0.35%	0	0.00%	0	0.00%	0	0.00%	5	3.14%	0	0.00%	6	1.11%
Total	282	100.00%	14	100.00%	66	100.00%	7	100.00%	159	100.00%	11	100.00%	539	100.00%





Juvenile Demographics and Statistics

Current Grade	COMMITTED		PROBATIONER		Total
	MALE	FEMALE	MALE	FEMALE	
8	4 (1.42%)	0 (0.00%)	4 (6.06%)	0 (0.00%)	8 (2.17%)
9	26 (9.22%)	3 (21.43%)	29 (43.94%)	2 (28.57%)	60 (16.26%)
10	64 (22.70%)	3 (21.43%)	15 (22.73%)	0 (0.00%)	82 (22.22%)
11	55 (19.50%)	3 (21.43%)	7 (10.61%)	1 (14.29%)	66 (17.89%)
12	34 (12.06%)	1 (7.14%)	3 (4.55%)	1 (14.29%)	39 (10.57%)
HSG	80 (28.37%)	3 (21.43%)	4 (6.06%)	2 (28.57%)	89 (24.12%)
GED	11 (3.90%)	1 (7.14%)	1 (1.52%)	1 (14.29%)	14 (3.79%)
Others **	8 (2.84%)	0 (0.00%)	3 (4.55%)	0 (0.00%)	11 (2.98%)
Total	282 (100.00%)	14 (100.00%)	66 (100.00%)	7 (100.00%)	369 (100.00%)

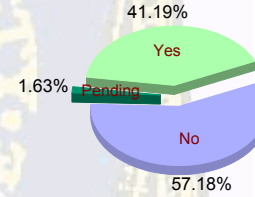


** Includes Aged Out Juveniles and Pending Records

Special Education Services

Yes	114 (40.43%)	10 (71.43%)	28 (42.42%)	0 (0.00%)	152 (41.19%)
No	165 (58.51%)	4 (28.57%)	35 (53.03%)	7 (100.00%)	211 (57.18%)
Pending	3 (1.06%)	0 (0.00%)	3 (4.55%)	0 (0.00%)	6 (1.63%)
Total	282 (100.00%)	14 (100.00%)	66 (100.00%)	7 (100.00%)	369 (100.00%)

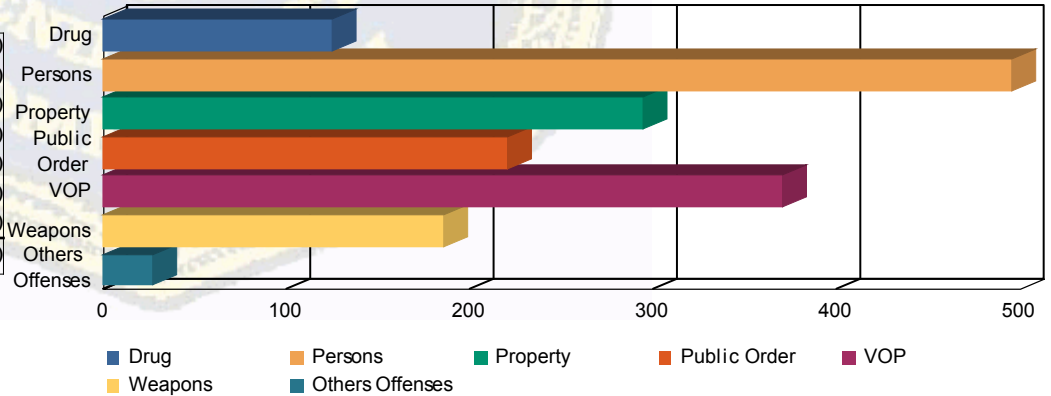
Special Education



Offense Categories

Drug	102 (7.13%)	4 (5.26%)	16 (8.51%)	3 (13.64%)	125 (7.28%)
Persons	428 (29.91%)	17 (22.37%)	46 (24.47%)	4 (18.18%)	495 (28.83%)
Property	252 (17.61%)	15 (19.74%)	26 (13.83%)	1 (4.55%)	294 (17.12%)
Public Order	175 (12.23%)	14 (18.42%)	25 (13.30%)	6 (27.27%)	220 (12.81%)
VOP	296 (20.68%)	18 (23.68%)	49 (26.06%)	7 (31.82%)	370 (21.55%)
Weapons	158 (11.04%)	7 (9.21%)	20 (10.64%)	1 (4.55%)	186 (10.83%)
Others Offenses	20 (1.40%)	1 (1.32%)	6 (3.19%)	0 (0.00%)	27 (1.57%)
Total *	1,431 (100.00%)	76 (100.00%)	188 (100.00%)	22 (100.00%)	1,717 (100.00%)

Offense Categories



* Juveniles may have multiple offenses